

V&V Reference Report

L2 ASCDS Version : 10.4.2.1

Observation 17603 - L2 Version 1
Chandra X-Ray Center

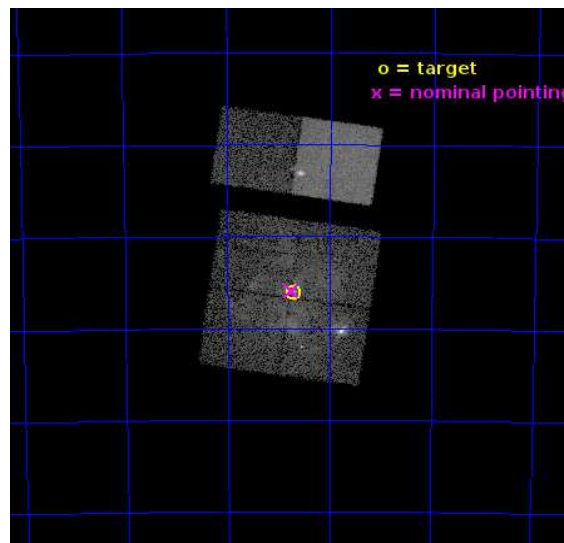
L2 Processing Date : Dec 10 2015

Contents

1	Front	2
2	OBI	3
2.1	OBI	3
2.1.1	Images	3
2.1.2	Bias	3
2.1.3	Parameters	4
2.1.4	Events	4
2.2	Compared Parameters	5
2.3	Aspect	6
2.4	Star Slots	9
2.4.1	Slot 3	9
2.4.2	Slot 4	10
2.4.3	Slot 5	11
2.4.4	Slot 6	12
2.4.5	Slot 7	13
2.5	FID Slots	14
2.5.1	Slot 0	14
2.5.2	Slot 1	15
2.5.3	Slot 2	16
A	Summary	17
A.1	Status	17
A.2	Comments	17

1 Front

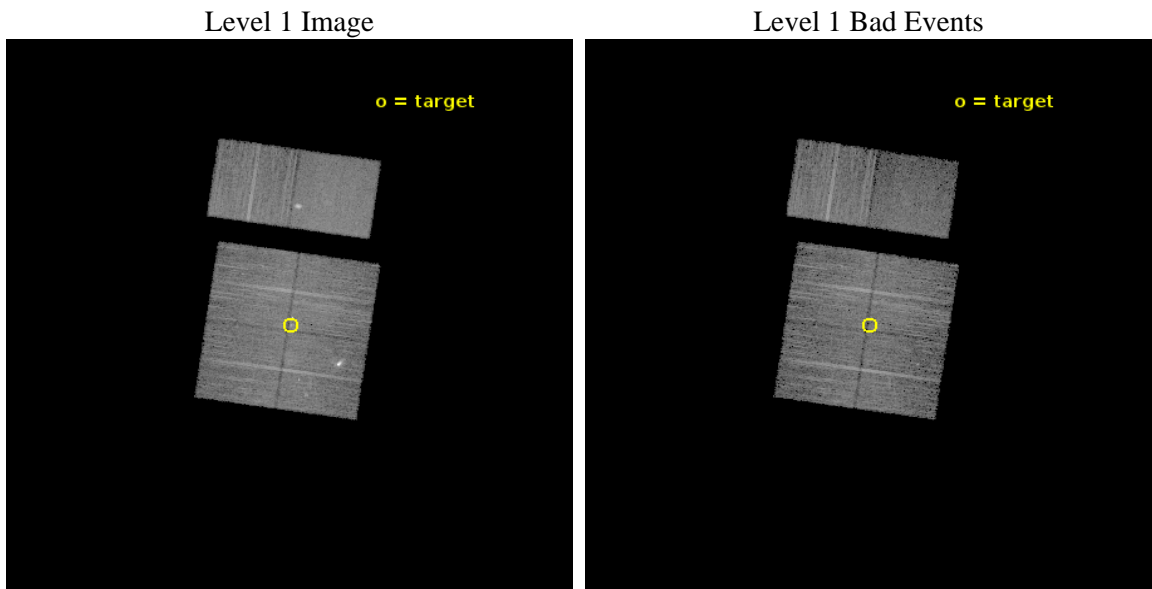
seq_num	901116	Sequence number
obs_id	17603	Observation id
title	The Tarantula -- Revealed by X-rays (T-ReX): A Definitive Chandra Investigation of 30 Doradus	Proposal title
observer	Dr. Leisa Townsley	Principal investigator
object	30 Doradus	Source name
dtcycle	0	
cycle	P	events from which exps? Prim/Second/Both
ra_targ	84.676667	Observer's specified target RA [deg]
dec_targ	-69.100806	Observer's specified target Dec [deg]
ra_nom	84.687621612853	Nominal RA [deg]
dec_nom	-69.09864745573	Nominal Dec [deg]
roll_nom	8.3438596315971	Nominal Roll [deg]
revision	1	Processing version of data
ontime	13954.842035413	Sum of GTIs [s]
livetime	13778.137422963	Livetime [s]
ontime0	13954.718915462	Sum of GTIs [s]
ontime1	13954.759955406	Sum of GTIs [s]
ontime2	13954.800995469	Sum of GTIs [s]
ontime3	13954.842035413	Sum of GTIs [s]
ontime6	13954.924115419	Sum of GTIs [s]
ontime7	13954.883075476	Sum of GTIs [s]
l2events	93900	Number of level 2 events



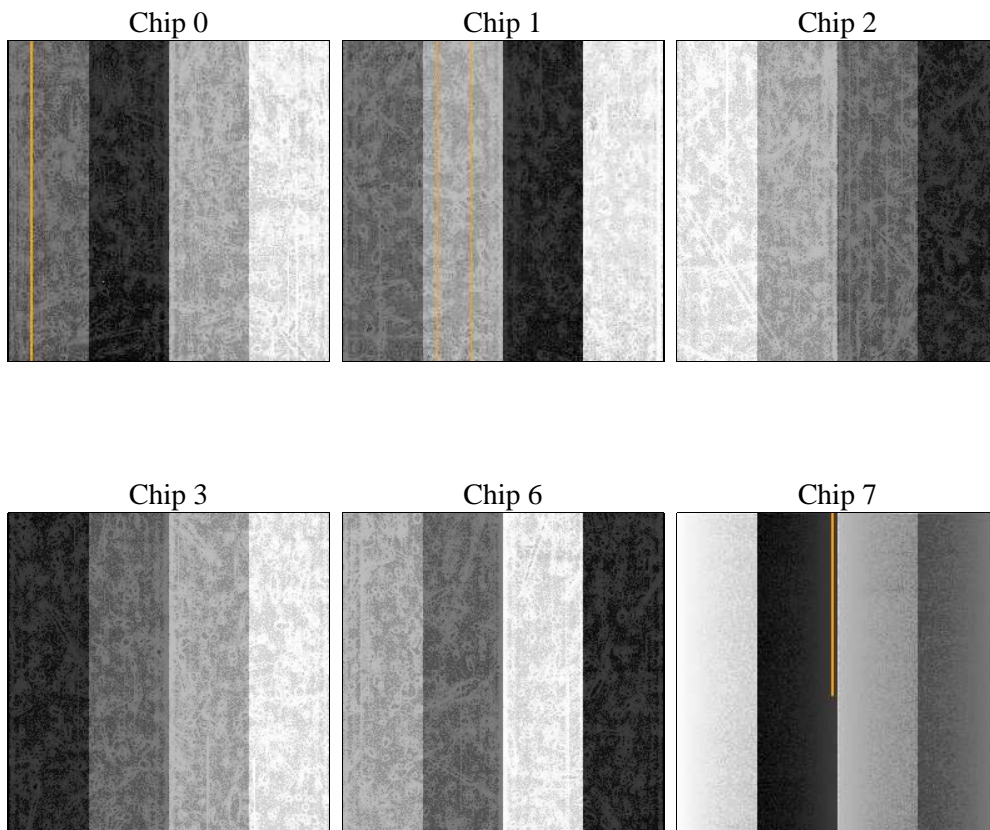
2 OBI

2.1 OBI

2.1.1 Images



2.1.2 Bias



2.1.3 Parameters

obi_num	1	Obi number	sched_exp_time	14000.000000	[s] Scheduled observation exposure time
ascdsver	10.4.2.1	Processing system revision	ontime	13954.842035413	Sum of GTIs [s]
caldbver	4.6.10a	 	ontime0	13954.718915462	Sum of GTIs [s]
date	2015-12-10T11:22:12	Date and time of file creation	ontime1	13954.759955406	Sum of GTIs [s]
revision	1	Processing version of data	ontime2	13954.800995469	Sum of GTIs [s]
			ontime3	13954.842035413	Sum of GTIs [s]
			ontime6	13954.924115419	Sum of GTIs [s]
			ontime7	13954.883075476	Sum of GTIs [s]
			l1events	443953	Number of level 1 events

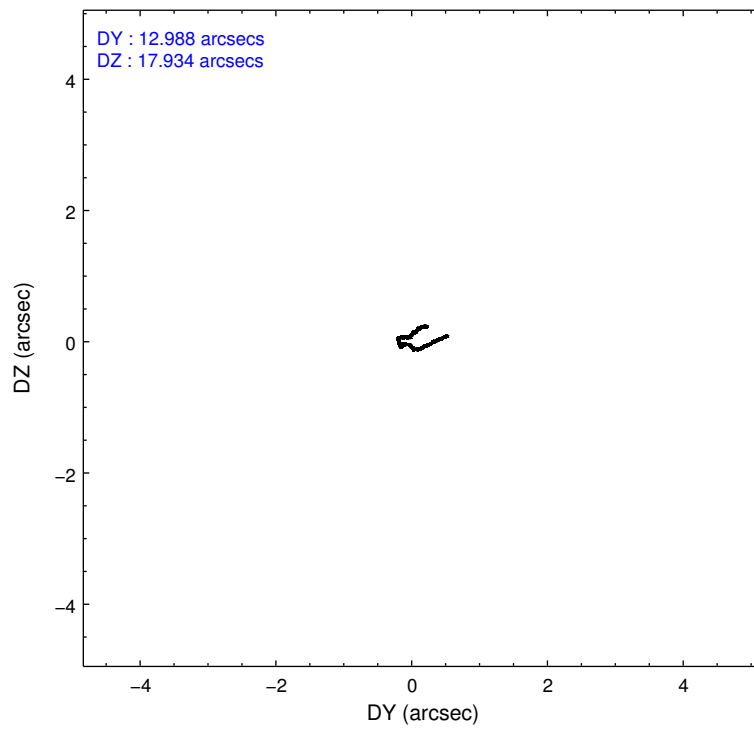
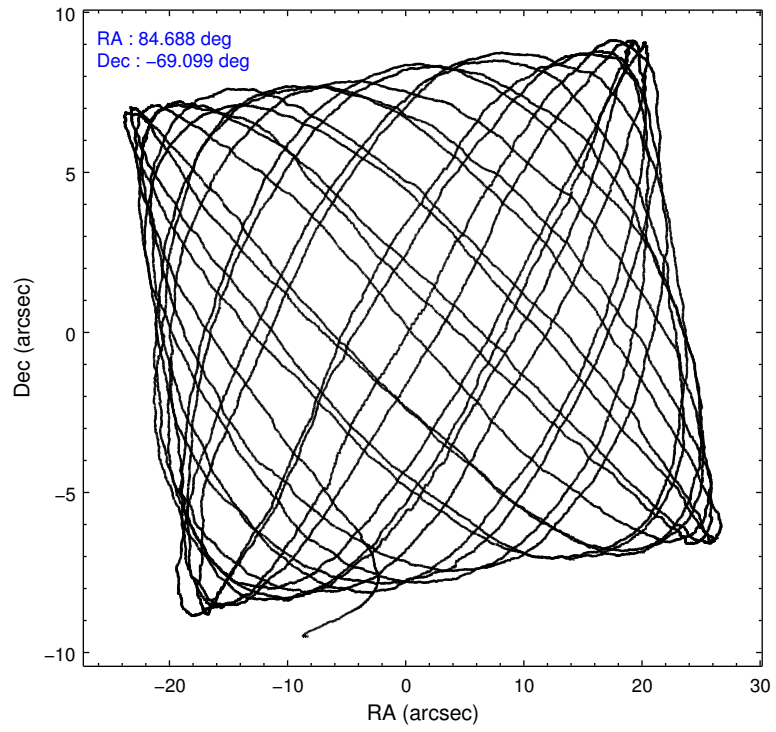
2.1.4 Events

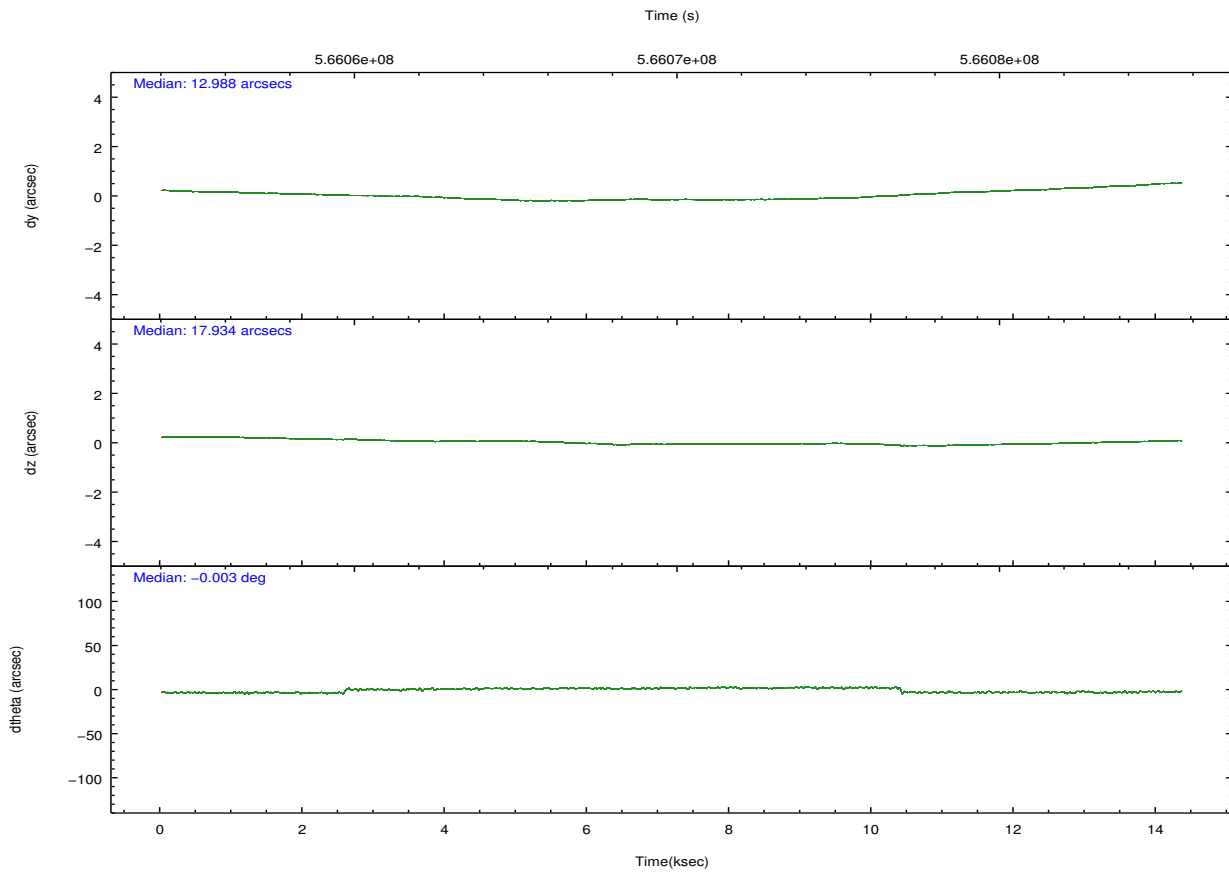
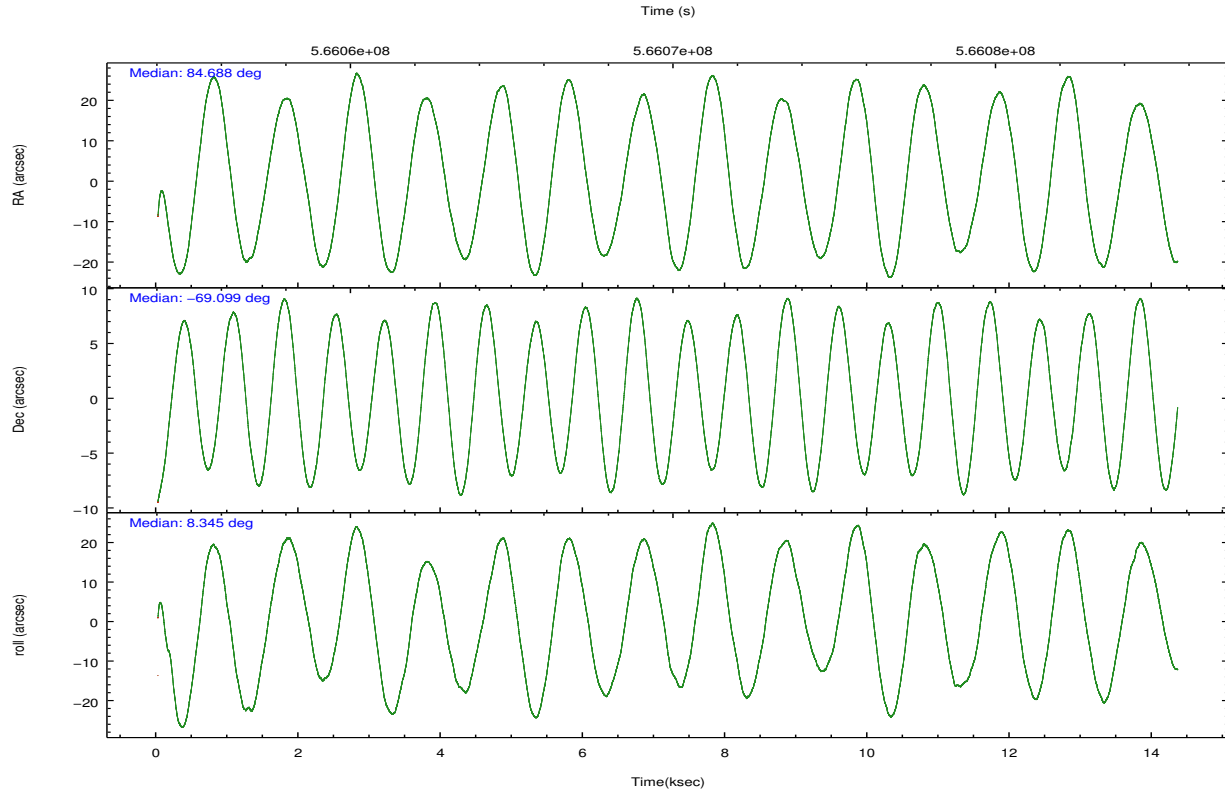
	ccd 0	ccd 1	ccd 2	ccd 3	ccd 6	ccd 7		ccd 0	ccd 1	ccd 2	ccd 3	ccd 6	ccd 7
level 1 events	64906	74436	74144	72943	73457	84067	grade 0 events	4942	12719	5498	6401	3079	4577
rejected events	54542	53964	63361	61136	64863	42916		7%	17%	7%	8%	4%	5%
rejected %	84%	72%	85%	83%	88%	51%	grade 1 events	45	90	43	66	34	133
								0%	0%	0%	0%	0%	0%
							grade 2 events	2223	3237	2175	2090	2005	9138
								3%	4%	2%	2%	2%	10%
							grade 3 events	830	1233	794	876	827	3624
								1%	1%	1%	1%	1%	4%
							grade 4 events	810	1191	850	882	830	3687
								1%	1%	1%	1%	1%	4%
							grade 5 events	2727	2917	2437	3058	3167	8423
								4%	3%	3%	4%	4%	10%
							grade 6 events	1562	2096	1468	1560	1853	20135
								2%	2%	1%	2%	2%	23%
							grade 7 events	51767	50953	60879	58010	61662	34350
								79%	68%	82%	79%	83%	40%

2.2 Compared Parameters

Parameter	Planned	Actual	Parameter	Planned	Actual
Instrument	ACIS	ACIS	Obspar format version number	7	7
Detector	ACIS-012367	ACIS-012367	Obspar file type	PREDICTED	ACTUAL
Grating	NONE	NONE	Obspar update status	NONE	UPDATED
Data mode	VFAINT	VFAINT	CCD I0 on	Y	Y
Observation mode	POINTING	POINTING	CCD I1 on	Y	Y
[deg] Pointing RA	84.627160	84.68762161285311	CCD I2 on	Y	Y
[deg] Pointing Dec	-69.115815	-69.09864745573036	CCD I3 on	Y	Y
[deg] Pointing Roll	8.078683	8.343859631597095	CCD S0 on	N	N
[mm] SIM focus pos	-0.782348	-0.7809083437167272	CCD S1 on	N	N
[mm] SIM defocus	0	0.001439871863259334	CCD S2 on	O1	Y
[mm] SIM translation stage pos	-233.592463	-233.5874344608287	CCD S3 on	O2	Y
[mm] SIM translation stage offset	0	-0.005018542100998502	CCD S4 on	N	N
[s] Observation start time (MET)	566063091.184000	566062056.1178	CCD S5 on	N	N
Observation start date	2015-12-09T15:43:43	2015-12-09T15:27:36	Number of optional ACIS chips dropped	0	0
[s] Observation end time (MET)	566077091.184000	566078499.16873	On-chip summing requested	N	N
Observation end date	2015-12-09T19:37:03	2015-12-09T20:01:39	Subarray requested	NONE	NONE
Read mode	TIMED	TIMED	Alternating exposures requested	N	N
			[s] Primary exposure time	0.000000	3.2

2.3 Aspect





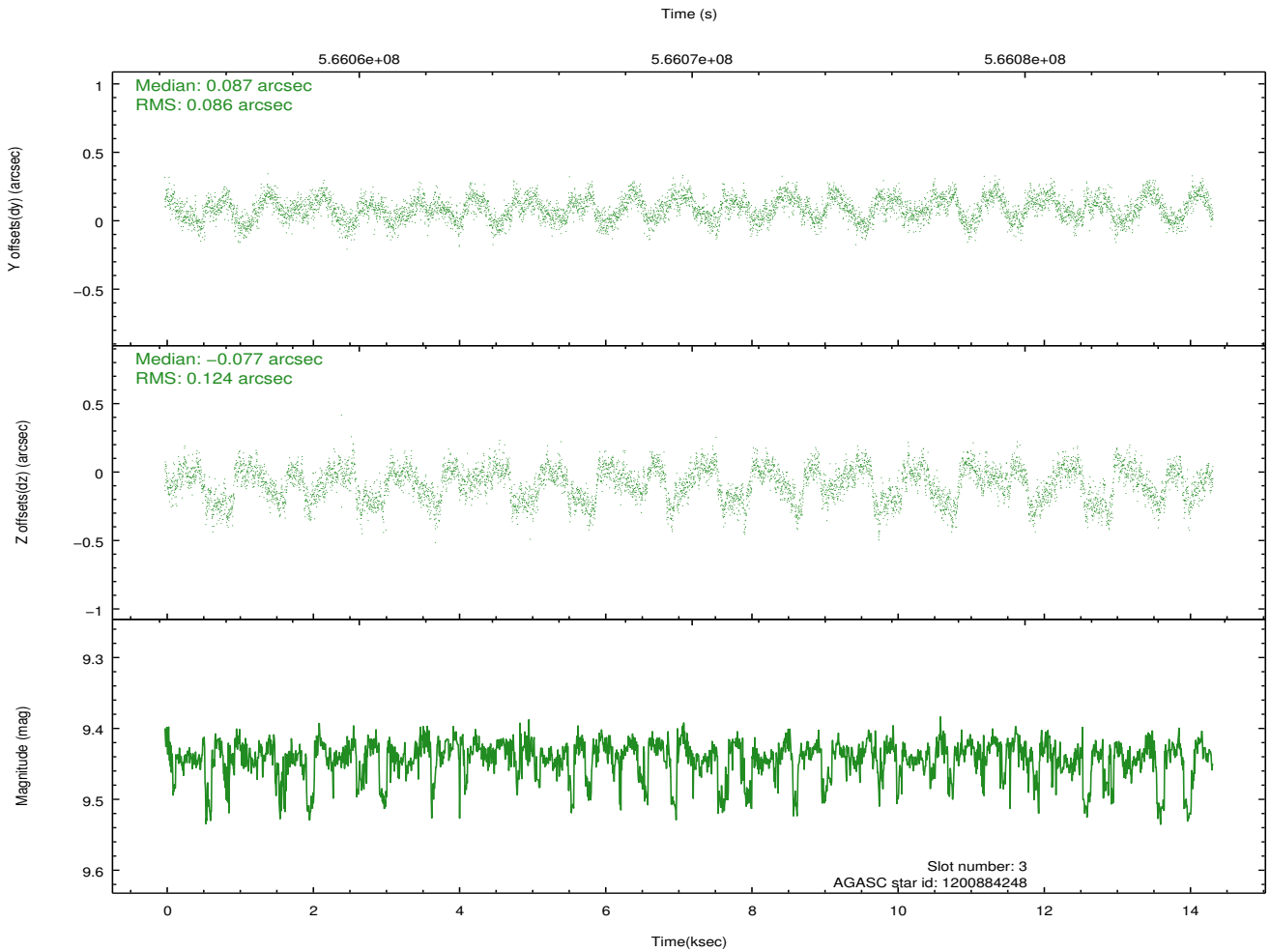
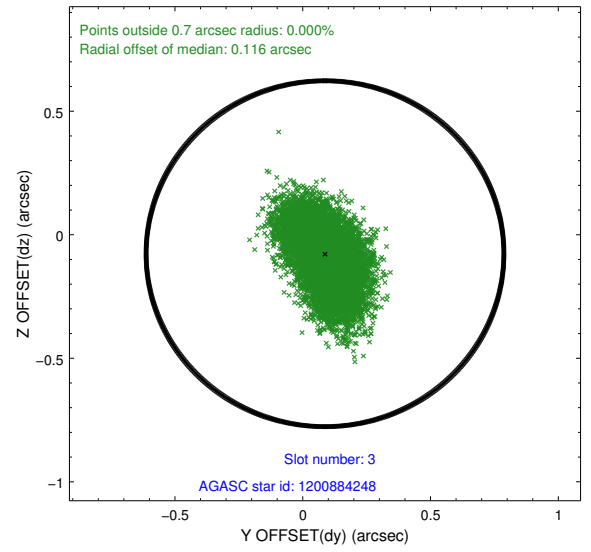
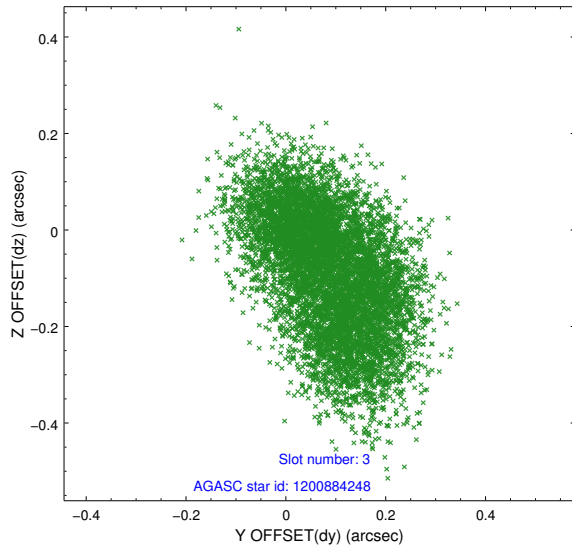
Slot Statistics

slot	status	used	id	mag	n_pts	med_dy	med_dz	dr1	dr2	ra	dec	mean_y	mean_z
0	FID		ACIS-I-1	7.24	3498	-0.035	-0.036	0.032	0.045	0.000000	0.000000	926.48	-841.66
1	FID		ACIS-I-4	7.19	3497	0.337	0.063	0.027	0.038	0.000000	0.000000	2147.02	1058.13
2	FID		ACIS-I-5	7.24	3498	-0.400	0.044	0.010	0.016	0.000000	0.000000	-1821.52	1056.22
3	GUIDE	used	1200884248	9.44	6987	0.087	-0.077	0.161	0.257	83.880915	-68.565170	-693.65	2095.10
4	GUIDE	used	1200885760	9.45	6988	0.226	0.149	0.129	0.209	83.723637	-68.777667	-995.58	1362.57
5	GUIDE	used	1201018384	9.02	6990	0.040	-0.024	0.117	0.186	85.801362	-68.593260	1790.45	1631.50
6	GUIDE	used	1201020040	8.58	6994	-0.030	0.034	0.091	0.154	85.379163	-68.879396	1084.82	700.07
7	GUIDE	used	1201016584	9.40	6975	-0.305	-0.083	0.196	0.365	85.677603	-68.415933	1729.65	2287.51

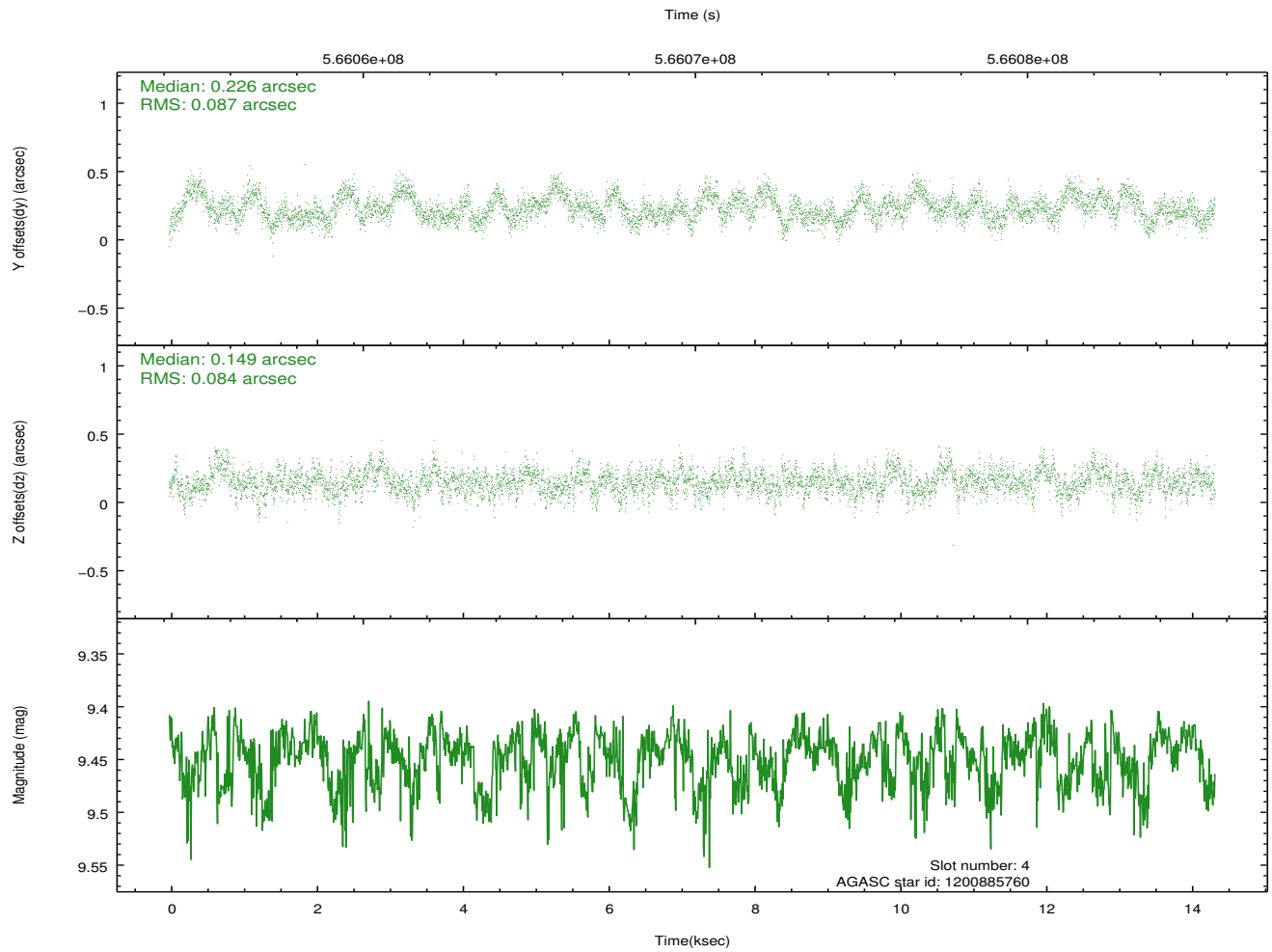
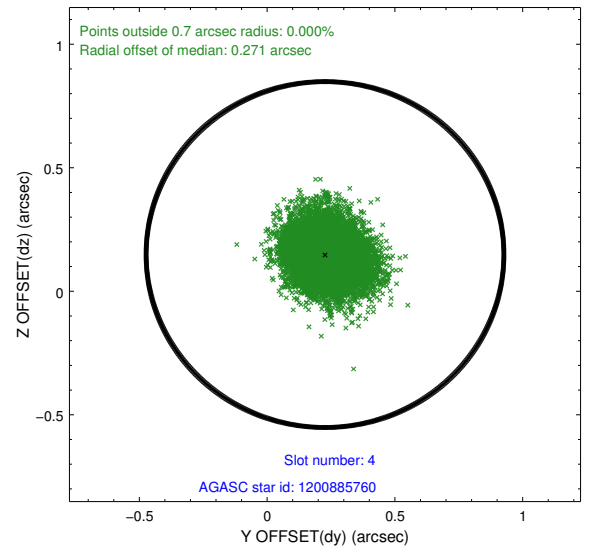
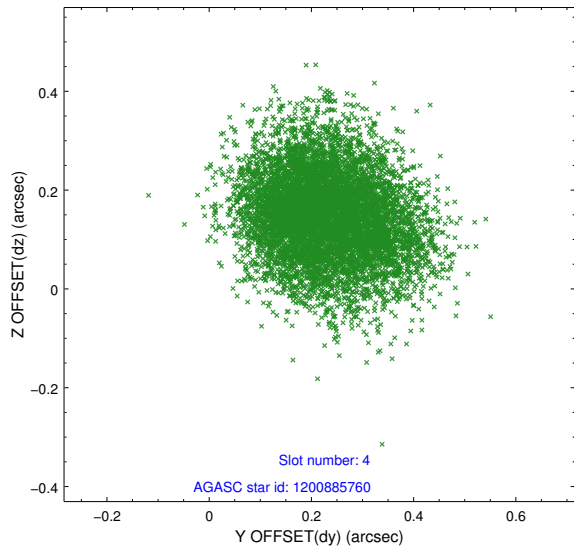
∞

2.4 Star Slots

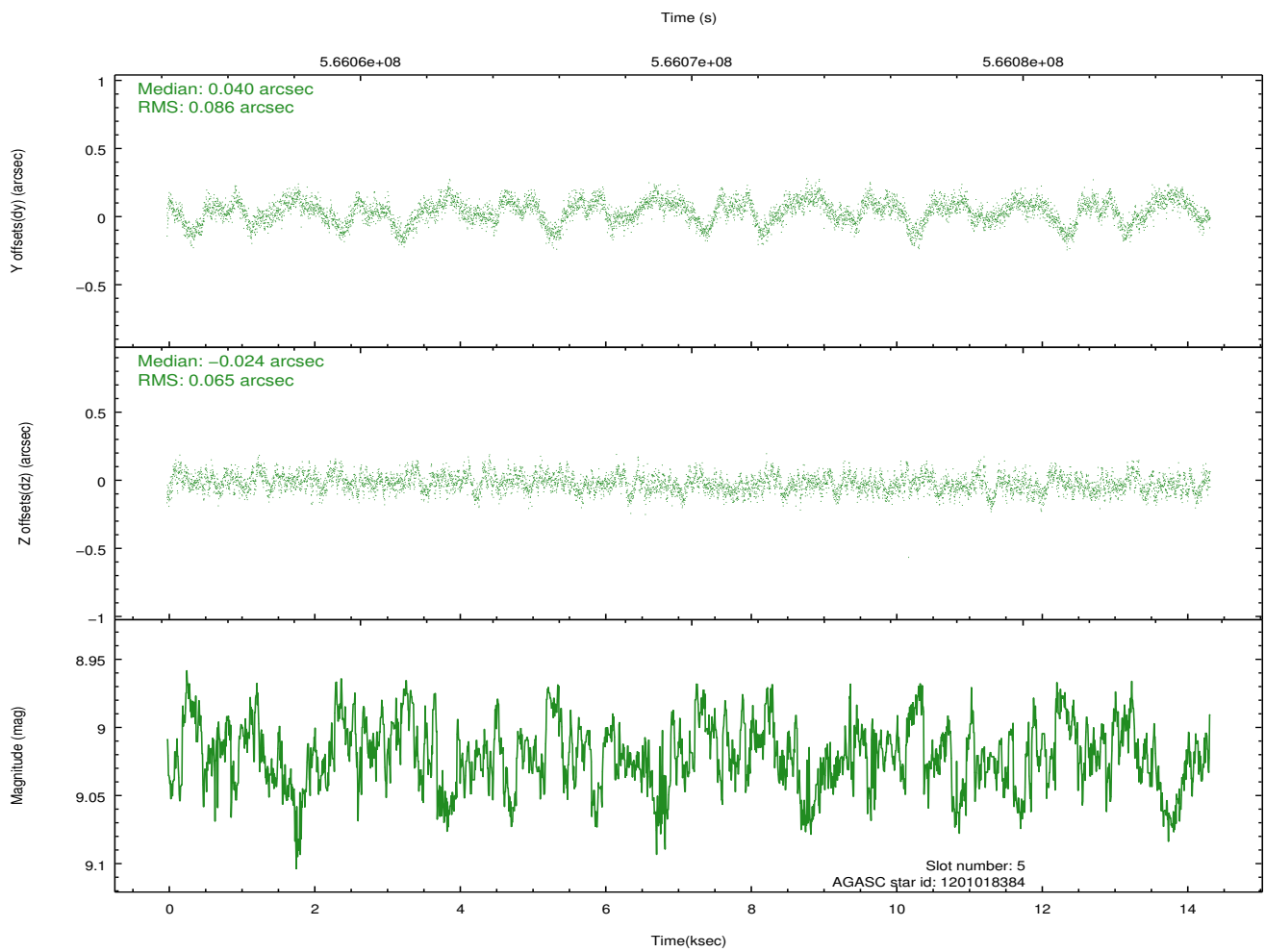
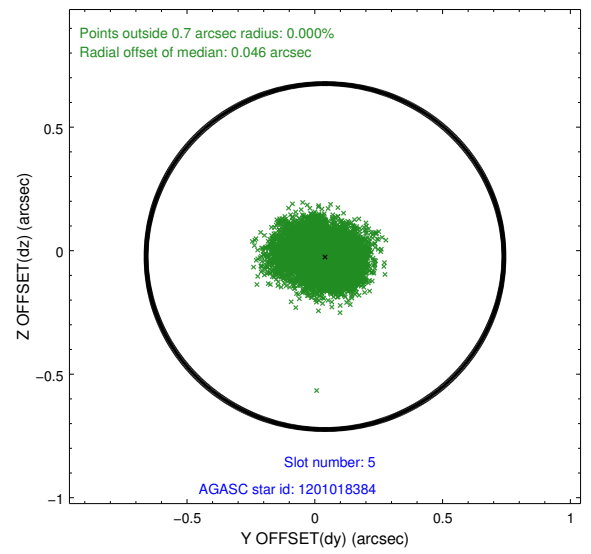
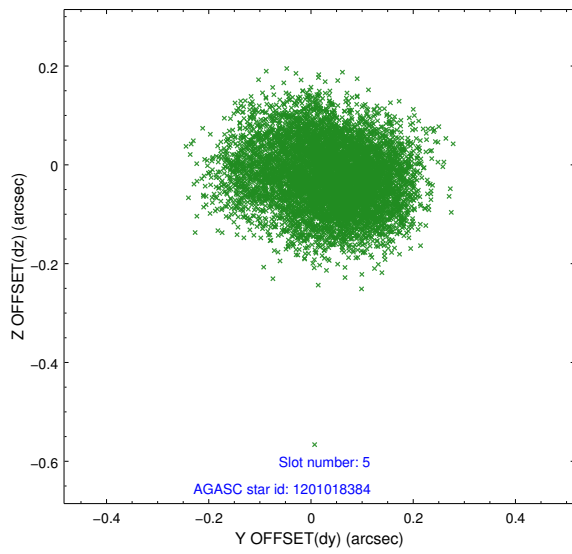
2.4.1 Slot 3



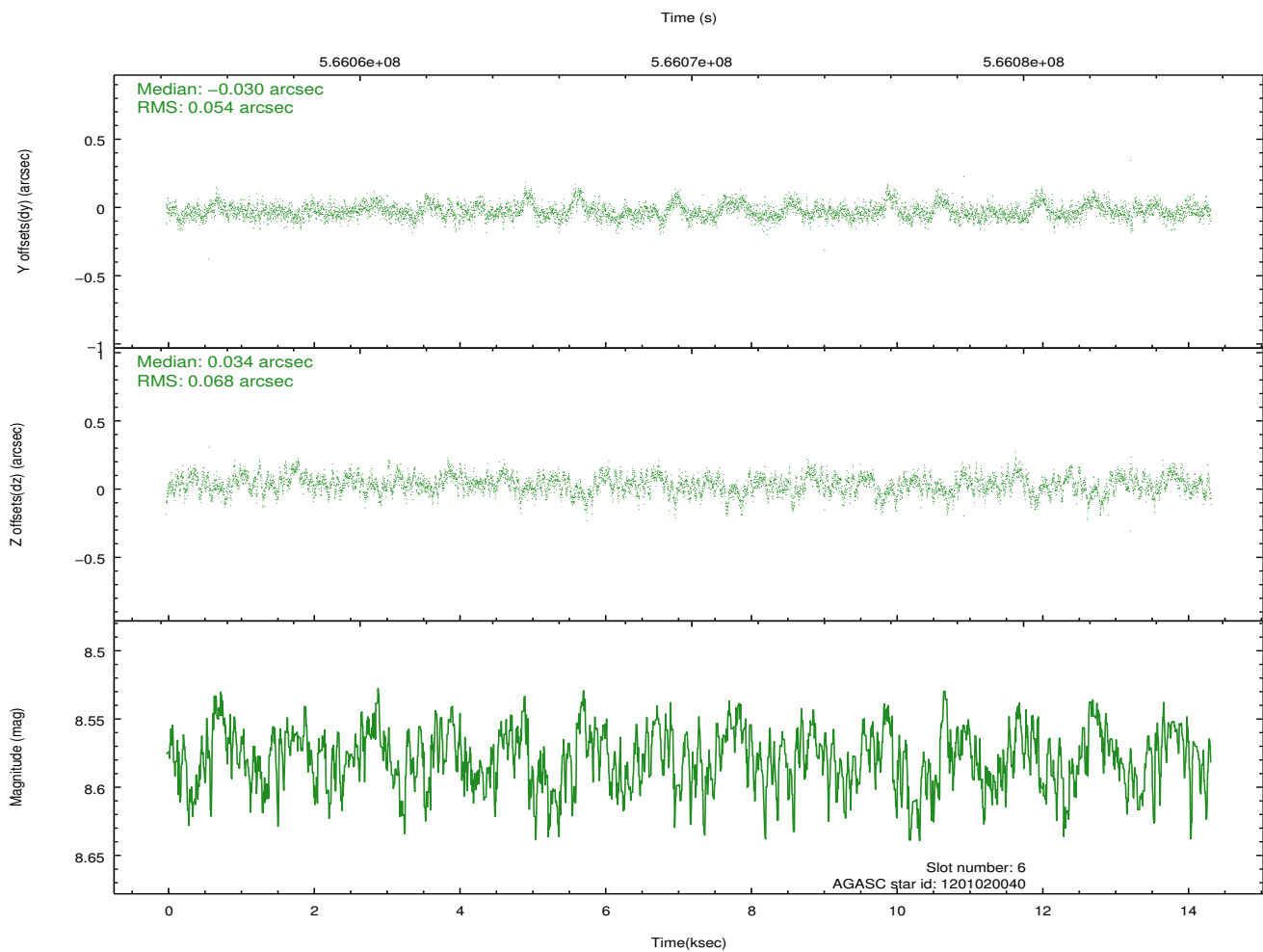
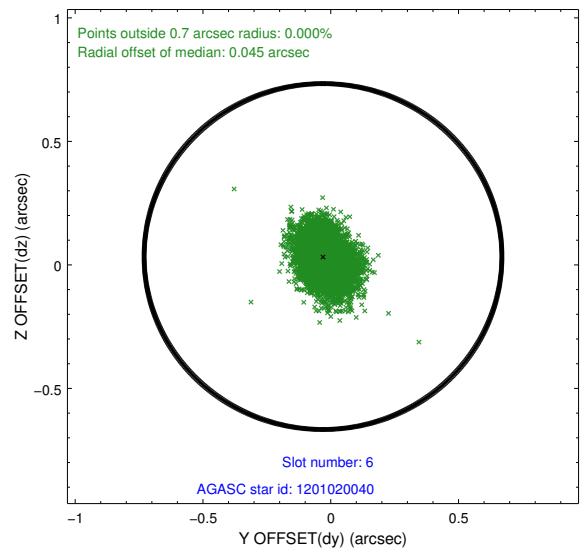
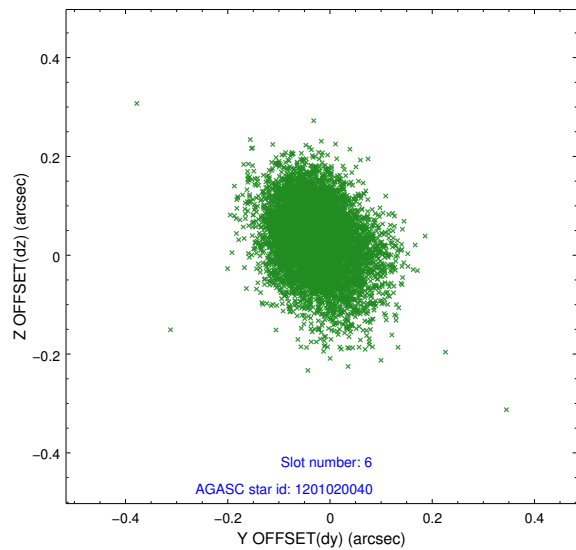
2.4.2 Slot 4



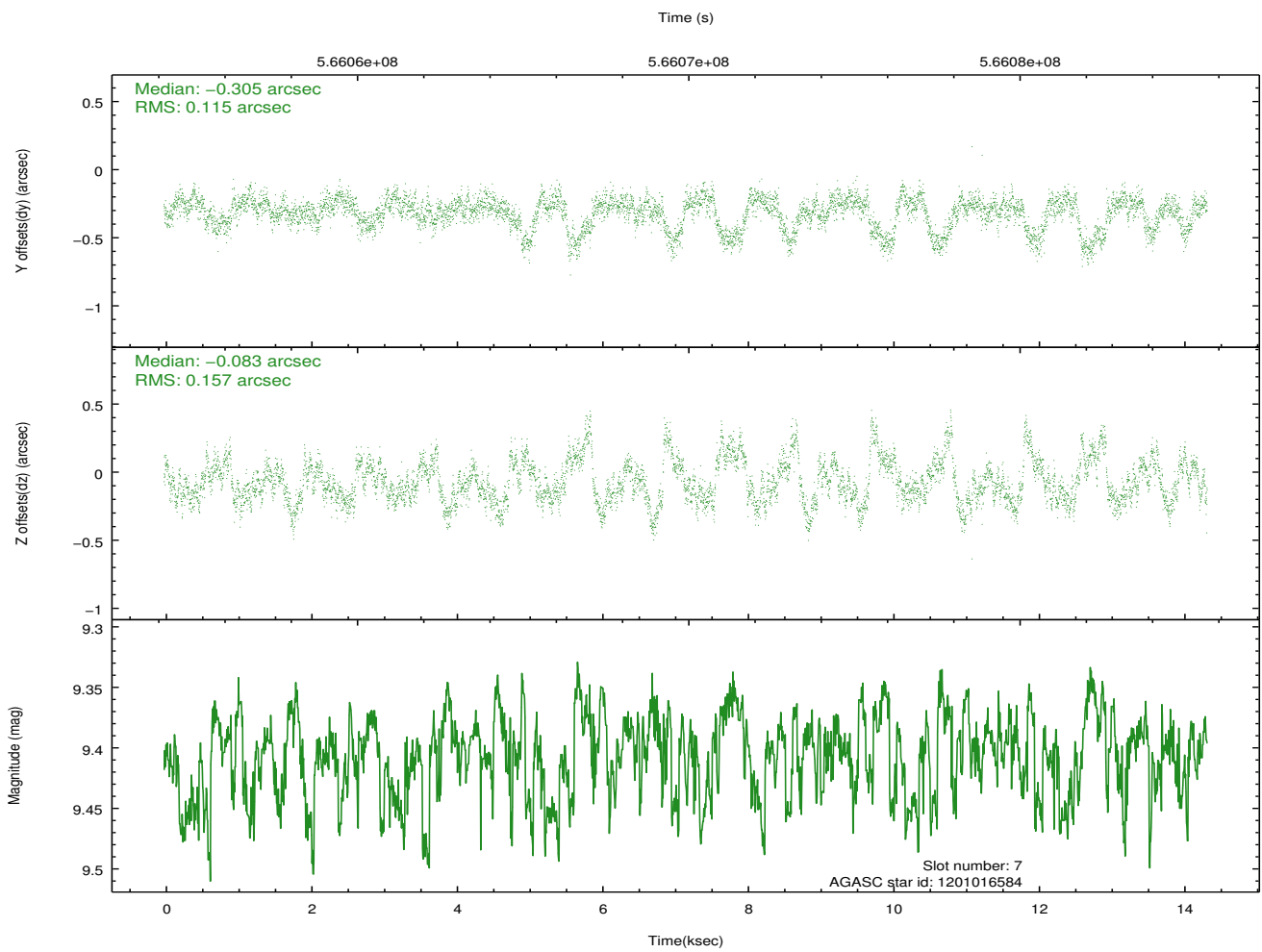
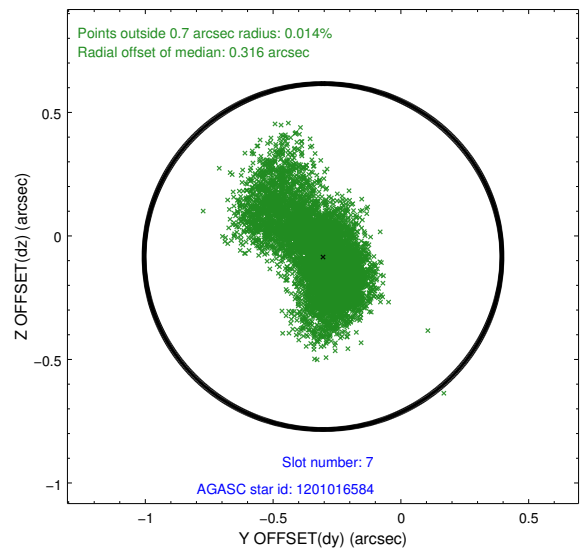
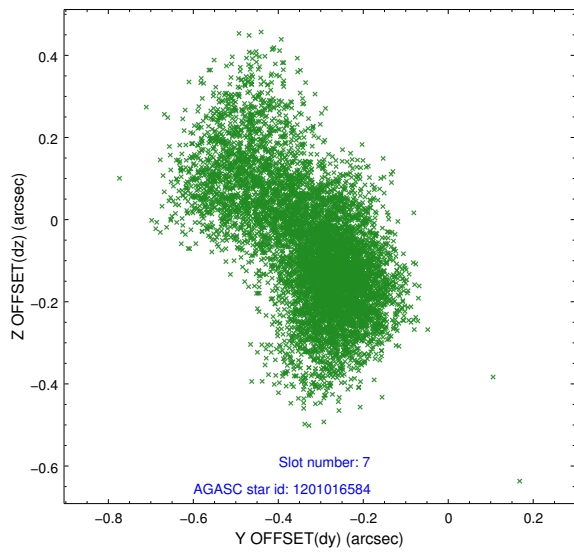
2.4.3 Slot 5



2.4.4 Slot 6

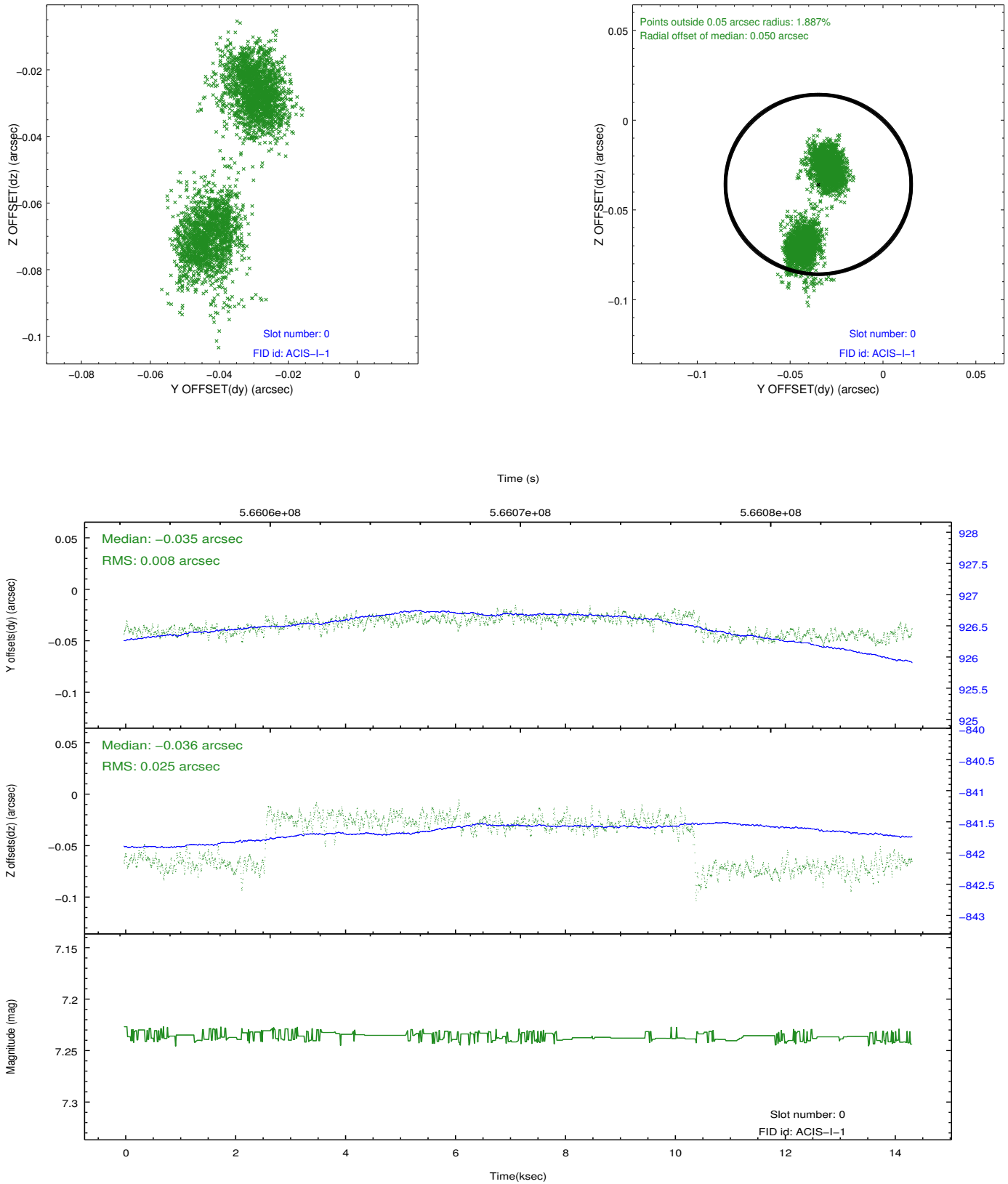


2.4.5 Slot 7

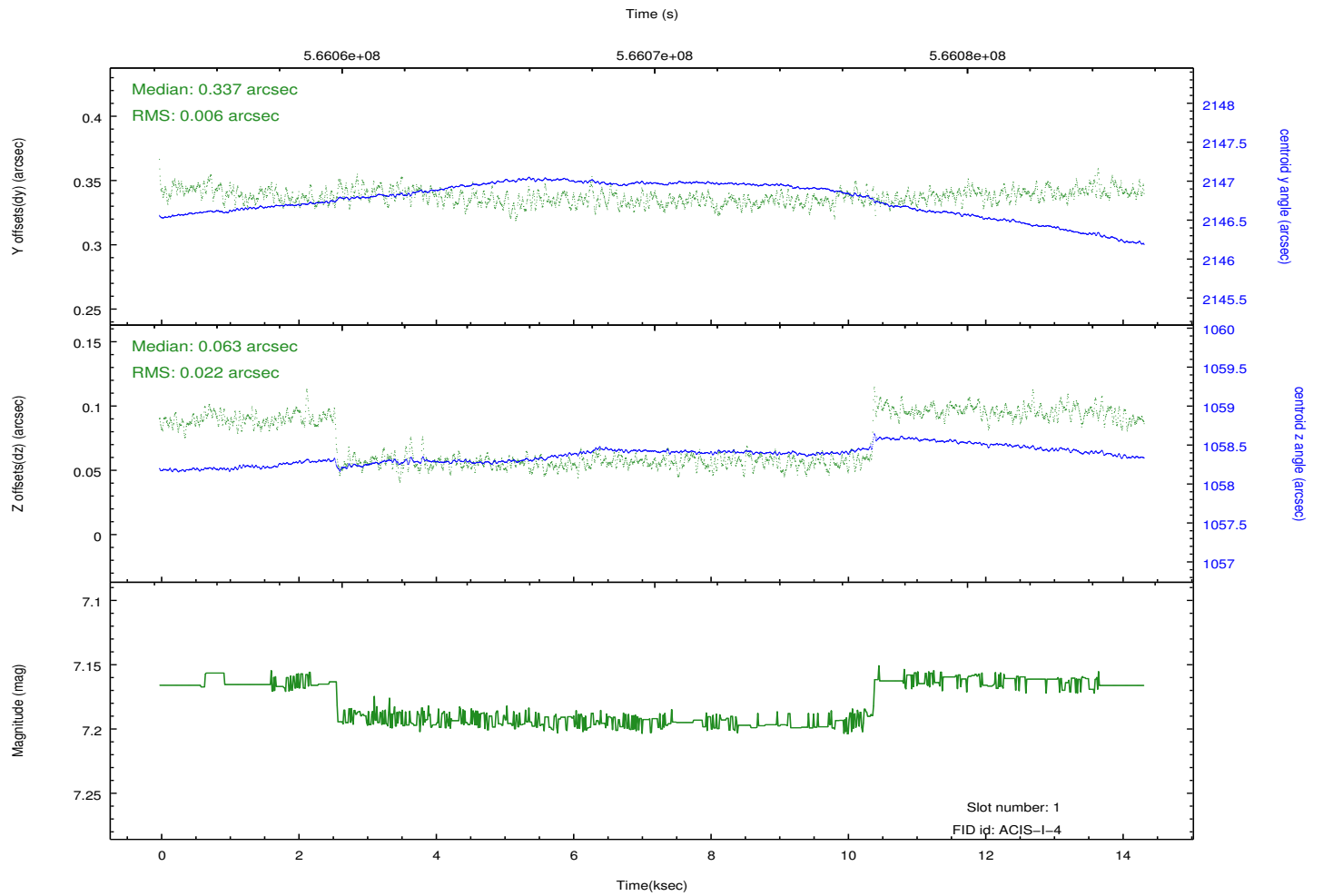
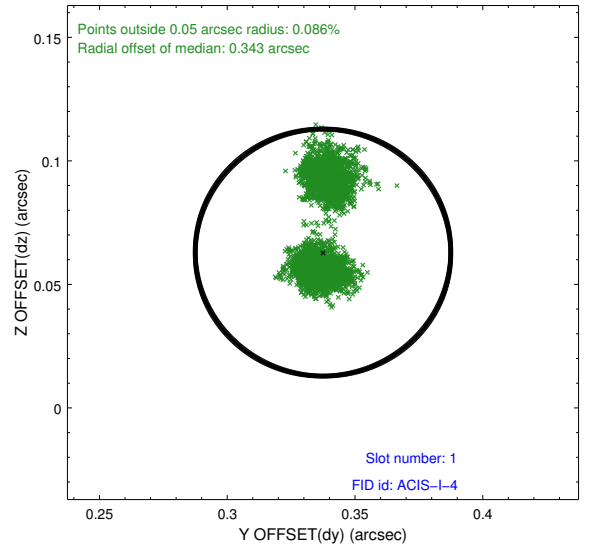
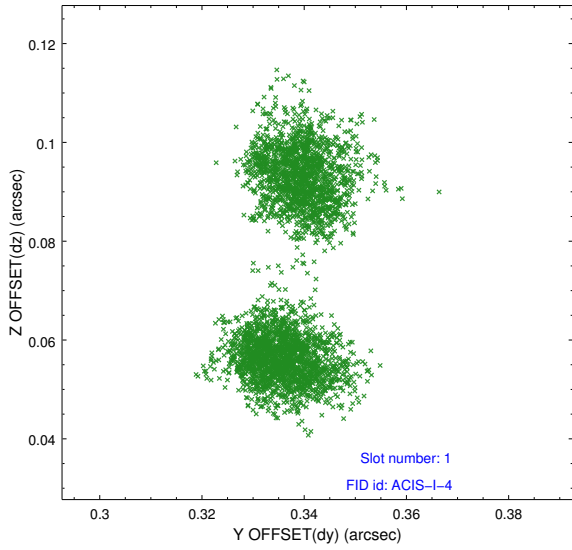


2.5 FID Slots

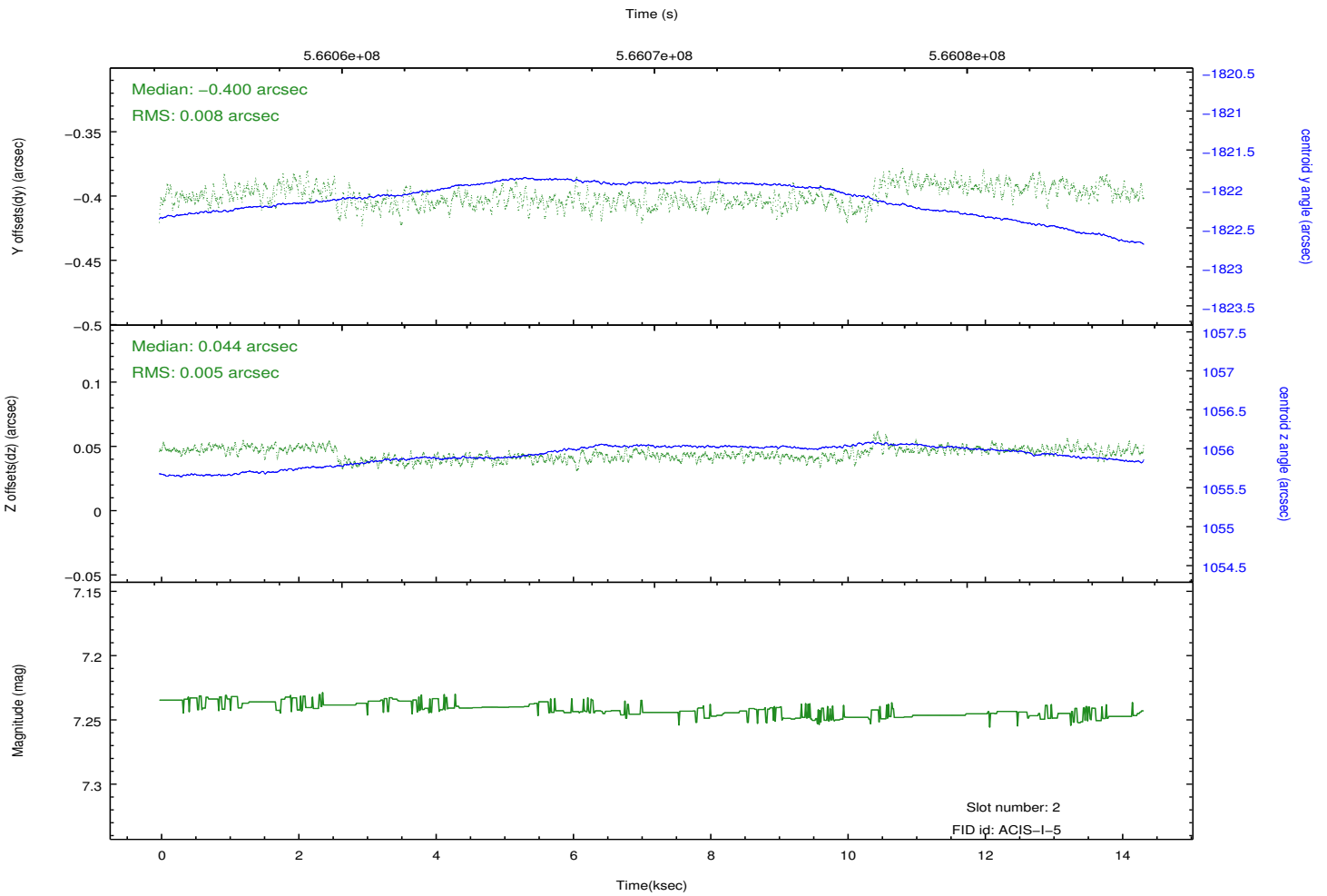
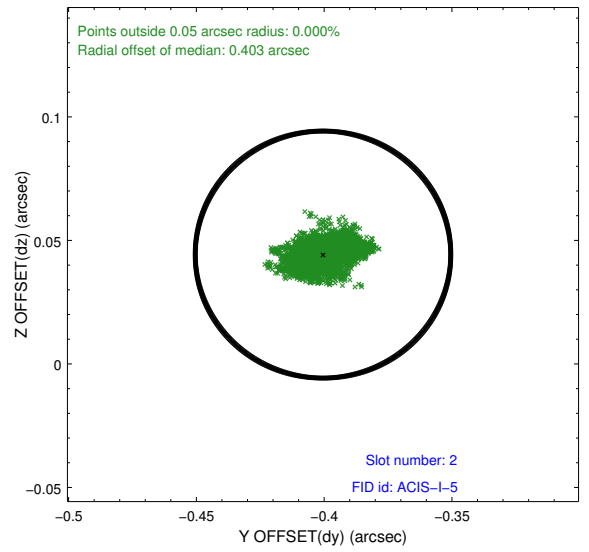
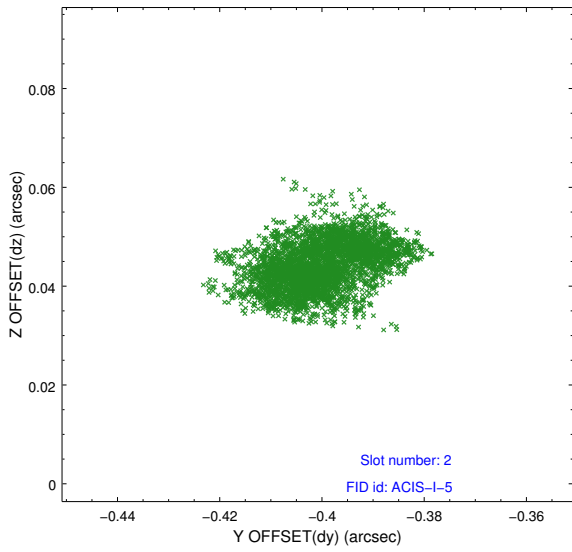
2.5.1 Slot 0



2.5.2 Slot 1



2.5.3 Slot 2



A Summary

A.1 Status

V&V Scientist	Joy Nichols
V&V Date (YYYY-MM-DD)	2015.12.10
V&V Edition	1
V&V Disposition and Status	OK
V&V Charge Time	13.954842035413

A.2 Comments