

V&V Reference Report

L2 ASCDS Version : 8.4.5

Observation 1873 - L2 Version 3
Chandra X-Ray Center

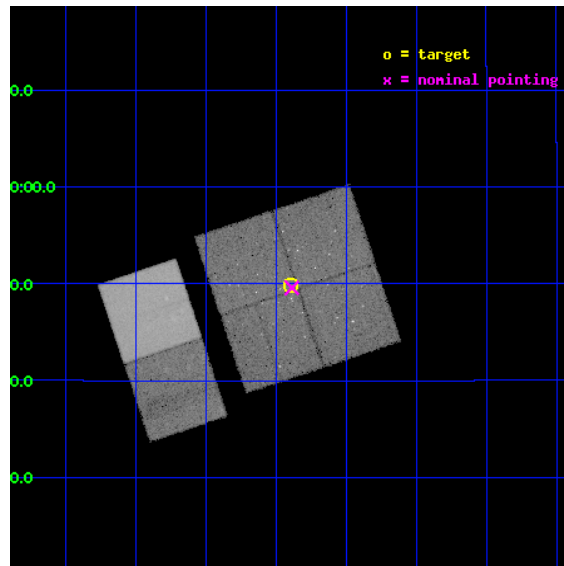
L2 Processing Date : Sep 17 2012

Contents

1	Front	2
2	OBI	3
2.1	OBI	3
2.1.1	Images	3
2.1.2	Bias	3
2.1.3	Parameters	4
2.1.4	Events	4
2.2	Compared Parameters	5
2.3	Aspect	6
2.4	Star Slots	9
2.4.1	Slot 3	9
2.4.2	Slot 4	10
2.4.3	Slot 5	11
2.4.4	Slot 6	12
2.4.5	Slot 7	13
2.5	FID Slots	14
2.5.1	Slot 0	14
2.5.2	Slot 1	15
2.5.3	Slot 2	16
A	Summary	17
A.1	Status	17
A.2	Comments	17

1 Front

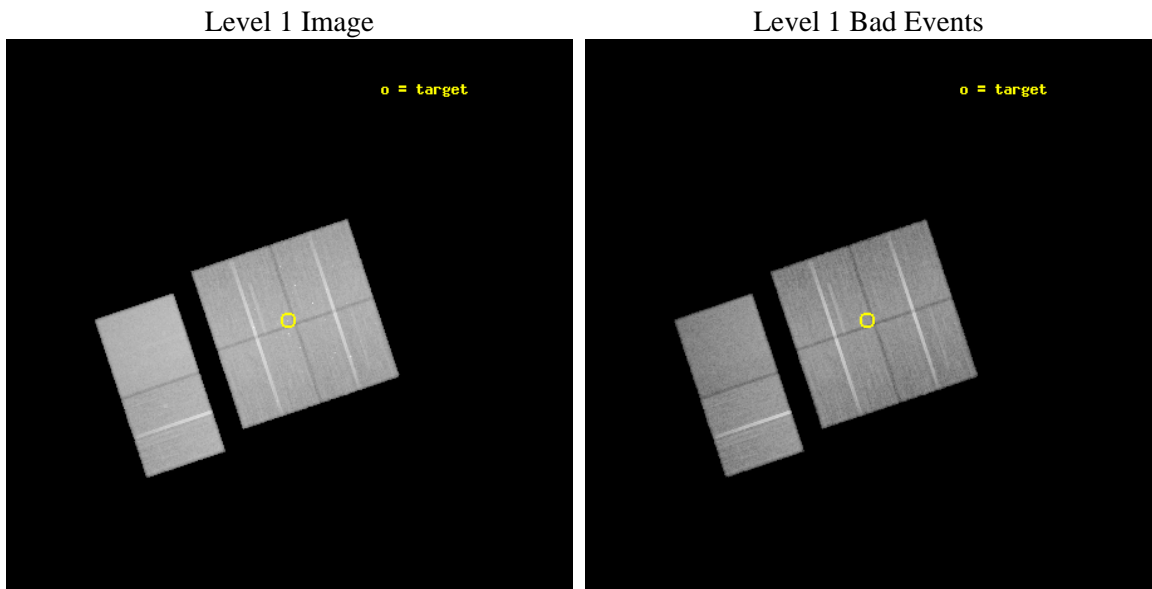
seq_num	200101	Sequence number
obs_id	1873	Observation id
title	BINARIES IN OLD OPEN CLUSTERS: M67	Proposal title
observer	Dr. Tomaso Belloni	Principal investigator
object	M 67	Source name
dtycycle	0	
cycle	P	events from which exps? Prim/Second/Both
ra_targ	132.85	Observer's specified target RA [deg]
dec_targ	11.83	Observer's specified target Dec [deg]
ra_nom	132.84678227604	Nominal RA [deg]
dec_nom	11.826449339562	Nominal Dec [deg]
roll_nom	251.51968182097	Nominal Roll [deg]
revision	3	Processing version of data
ontime	46851.159083396	Sum of GTIs [s]
livetime	46257.901496701	Livetime [s]
ontime0	46851.159083396	Sum of GTIs [s]
ontime1	46851.159083396	Sum of GTIs [s]
ontime2	46847.918123141	Sum of GTIs [s]
ontime3	46851.159083396	Sum of GTIs [s]
ontime6	46847.918153077	Sum of GTIs [s]
ontime7	46844.677172884	Sum of GTIs [s]
l2events	306166	Number of level 2 events



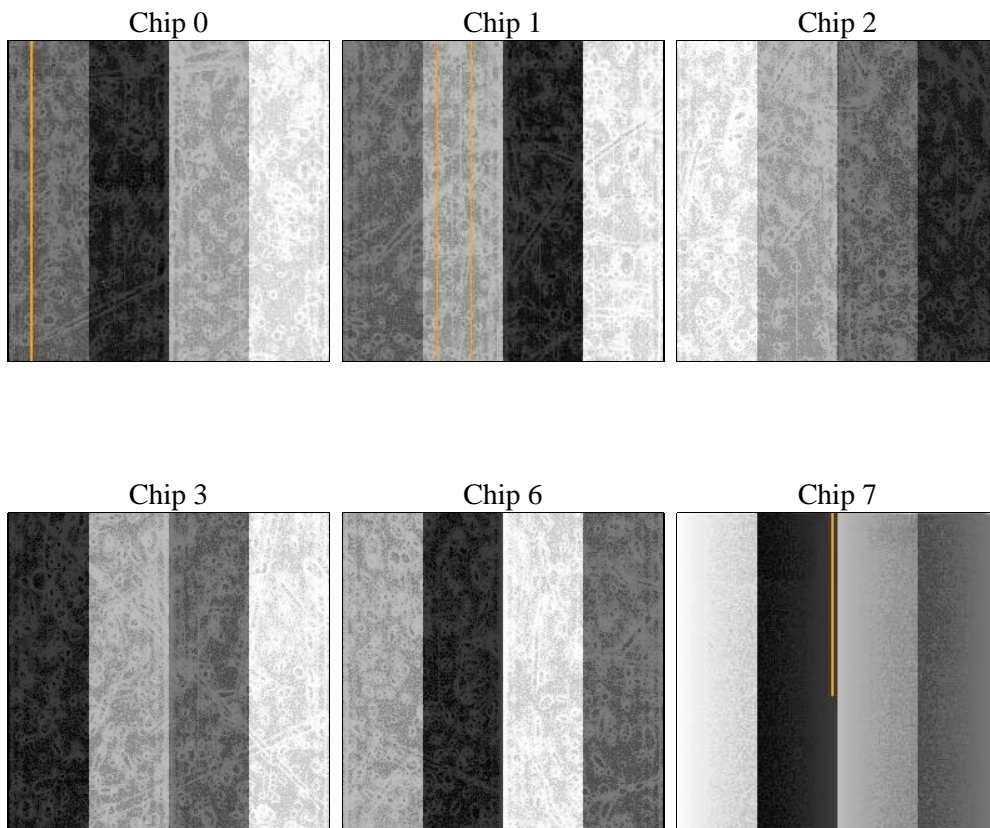
2 OBI

2.1 OBI

2.1.1 Images



2.1.2 Bias



2.1.3 Parameters

obi_num	3	Obi number	sched_exp_time	47100.000000	[s] Scheduled observation exposure time
ascdsver	8.4.5	Processing system revision	ontime	46851.159083396	Sum of GTIs [s]
caldbver	4.5.1.1	 	ontime0	46851.159083396	Sum of GTIs [s]
date	2012-09-17T02:20:55	Date and time of file creation	ontime1	46851.159083396	Sum of GTIs [s]
revision	3	Processing version of data	ontime2	46847.918123141	Sum of GTIs [s]
			ontime3	46851.159083396	Sum of GTIs [s]
			ontime6	46847.918153077	Sum of GTIs [s]
			ontime7	46844.677172884	Sum of GTIs [s]
			l1events	1846995	Number of level 1 events

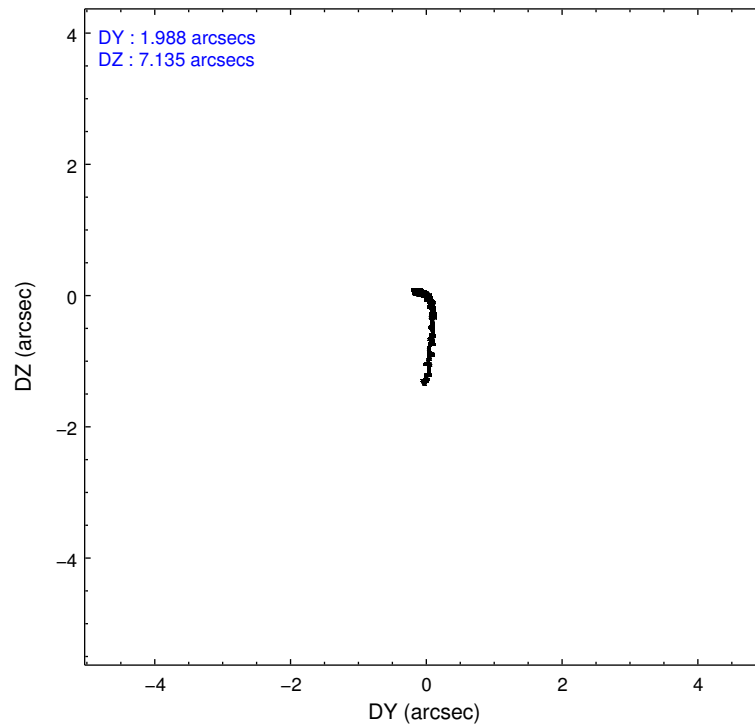
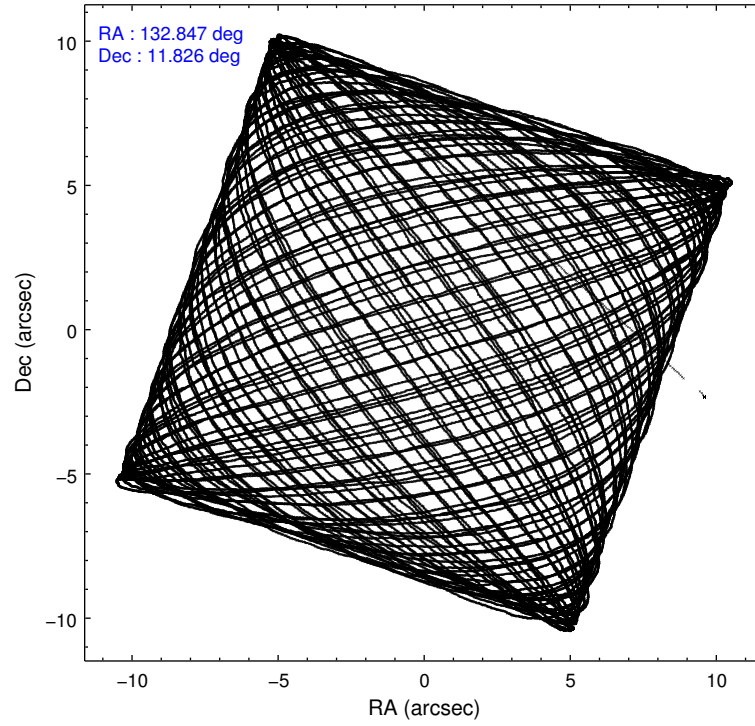
2.1.4 Events

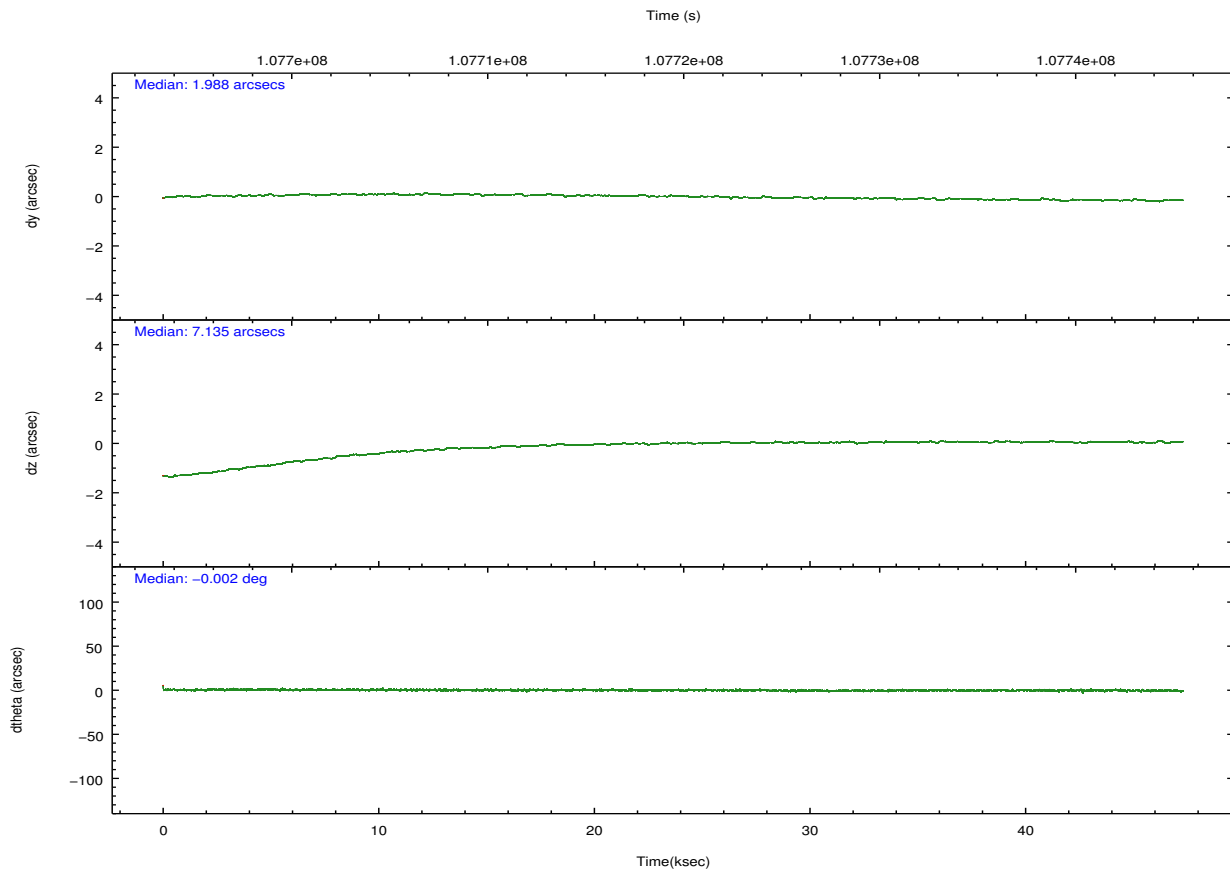
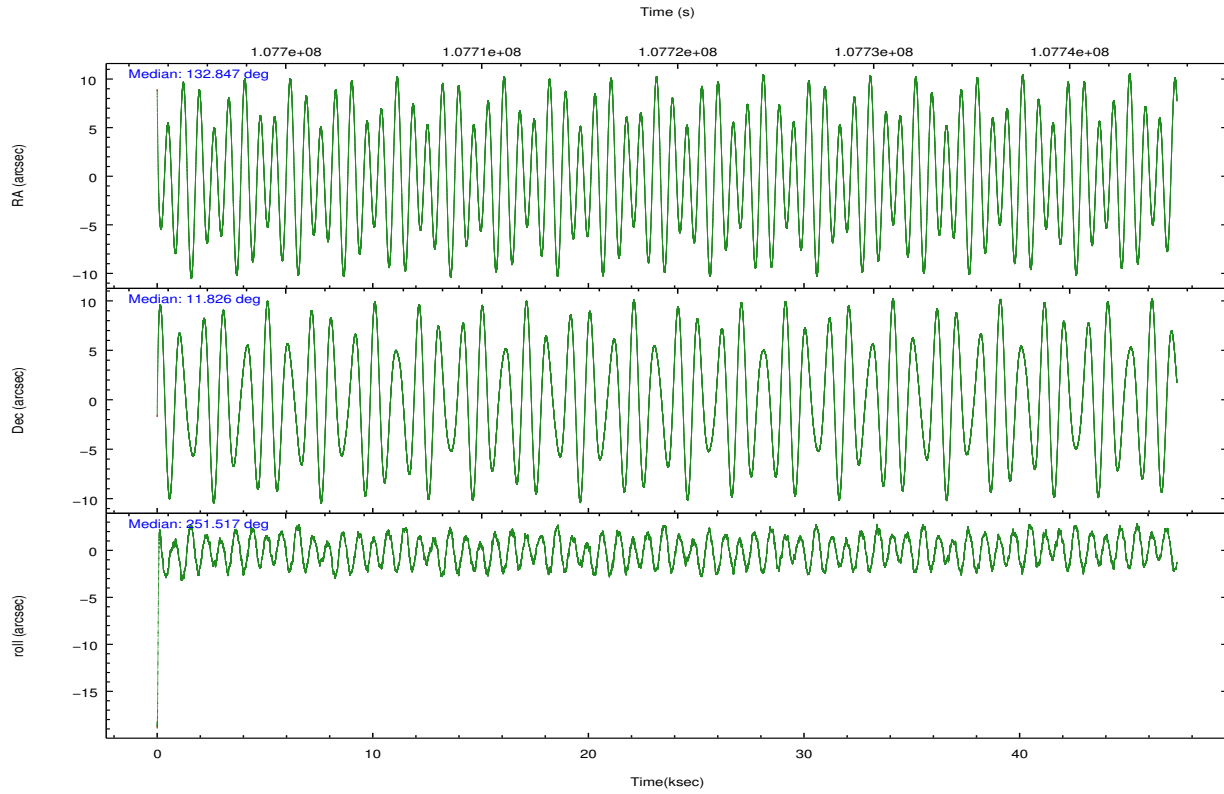
	ccd 0	ccd 1	ccd 2	ccd 3	ccd 6	ccd 7		ccd 0	ccd 1	ccd 2	ccd 3	ccd 6	ccd 7
level 1 events	273722	280238	303386	296679	313554	379416	grade 0 events	15593	16644	15469	15566	14117	15035
rejected events	237962	241709	268556	261909	278814	222207		5%	5%	5%	5%	4%	3%
rejected %	86%	86%	88%	88%	88%	58%	grade 1 events	156	138	127	147	131	326
								0%	0%	0%	0%	0%	0%
							grade 2 events	7450	7616	7259	6746	7018	30979
								2%	2%	2%	2%	2%	8%
							grade 3 events	3509	3841	3108	3227	3434	14443
								1%	1%	1%	1%	1%	3%
							grade 4 events	3142	3667	3265	3287	3257	14213
								1%	1%	1%	1%	1%	3%
							grade 5 events	10833	11535	10221	11704	12868	36730
								3%	4%	3%	3%	4%	9%
							grade 6 events	6066	6764	5733	5950	6918	82546
								2%	2%	1%	2%	2%	21%
							grade 7 events	226973	230033	258204	250052	265811	185144
								82%	82%	85%	84%	84%	48%

2.2 Compared Parameters

Parameter	Planned	Actual	Parameter	Planned	Actual
Instrument	ACIS	ACIS	Obspar format version number	7	7
Detector	ACIS-012367	ACIS-012367	Obspar file type	PREDICTED	ACTUAL
Grating	NONE	NONE	Obspar update status	NONE	UPDATED
Data mode	FAINT	FAINT	Number of optional ACIS chips dropped	0	0
Observation mode	POINTING	POINTING	On-chip summing requested	N	N
[deg] Pointing RA	132.841164	132.8467822760387	Subarray requested	NONE	NONE
[deg] Pointing Dec	11.853338	11.82644933956202	Alternating exposures requested	N	N
[deg] Pointing Roll	251.312159	251.5196818209683	[s] Primary exposure time	0.000000	3.2
[mm] SIM focus pos	-0.782348	-0.7809083437167272			
[mm] SIM defocus	0	0.001439871863259334			
[mm] SIM translation stage pos	-233.592463	-233.5874344608287			
[mm] SIM translation stage offset	0	-0.005018542100998502			
[s] Observation start time (MET)	107696003.184000	107695176.30384			
Observation start date	2001-05-31T11:32:19	2001-05-31T11:19:36			
[s] Observation end time (MET)	107743103.184000	107743677.25573			
Observation end date	2001-06-01T00:37:19	2001-06-01T00:47:57			
Read mode	TIMED	TIMED			

2.3 Aspect



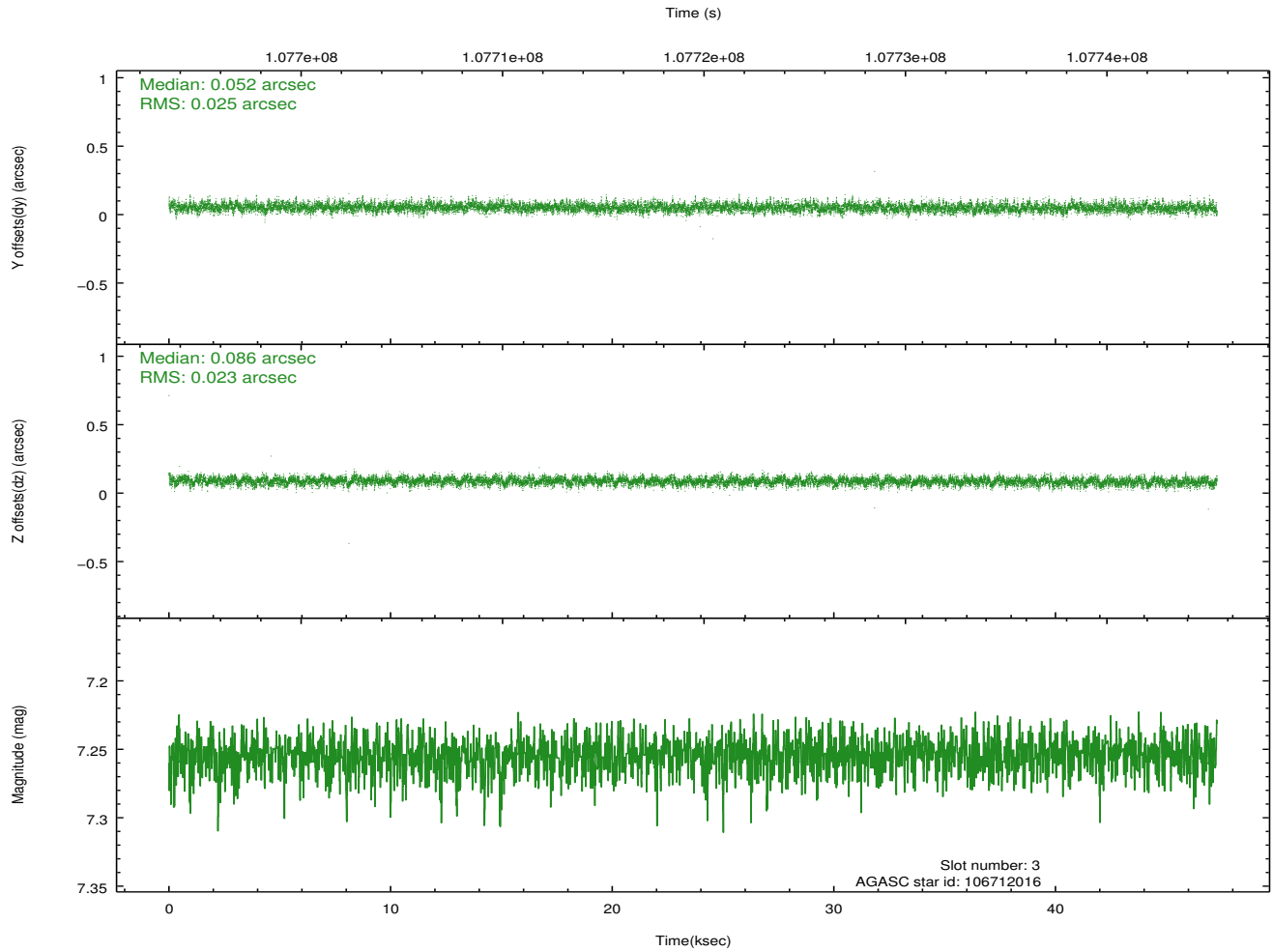
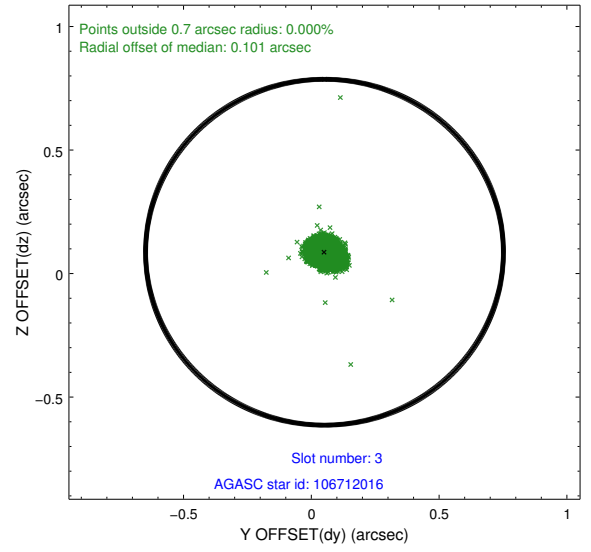
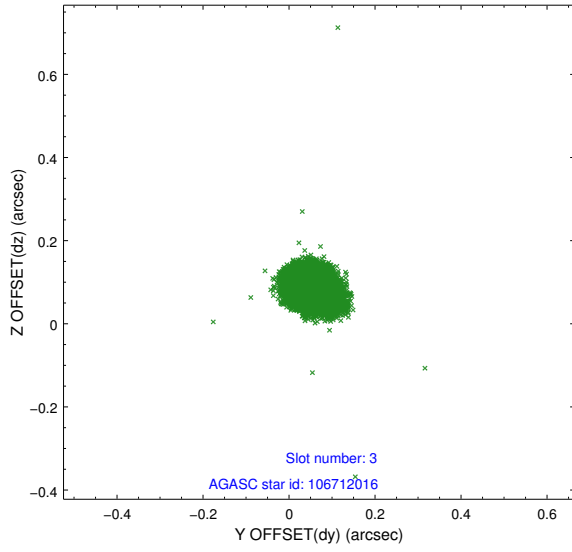


Slot Statistics

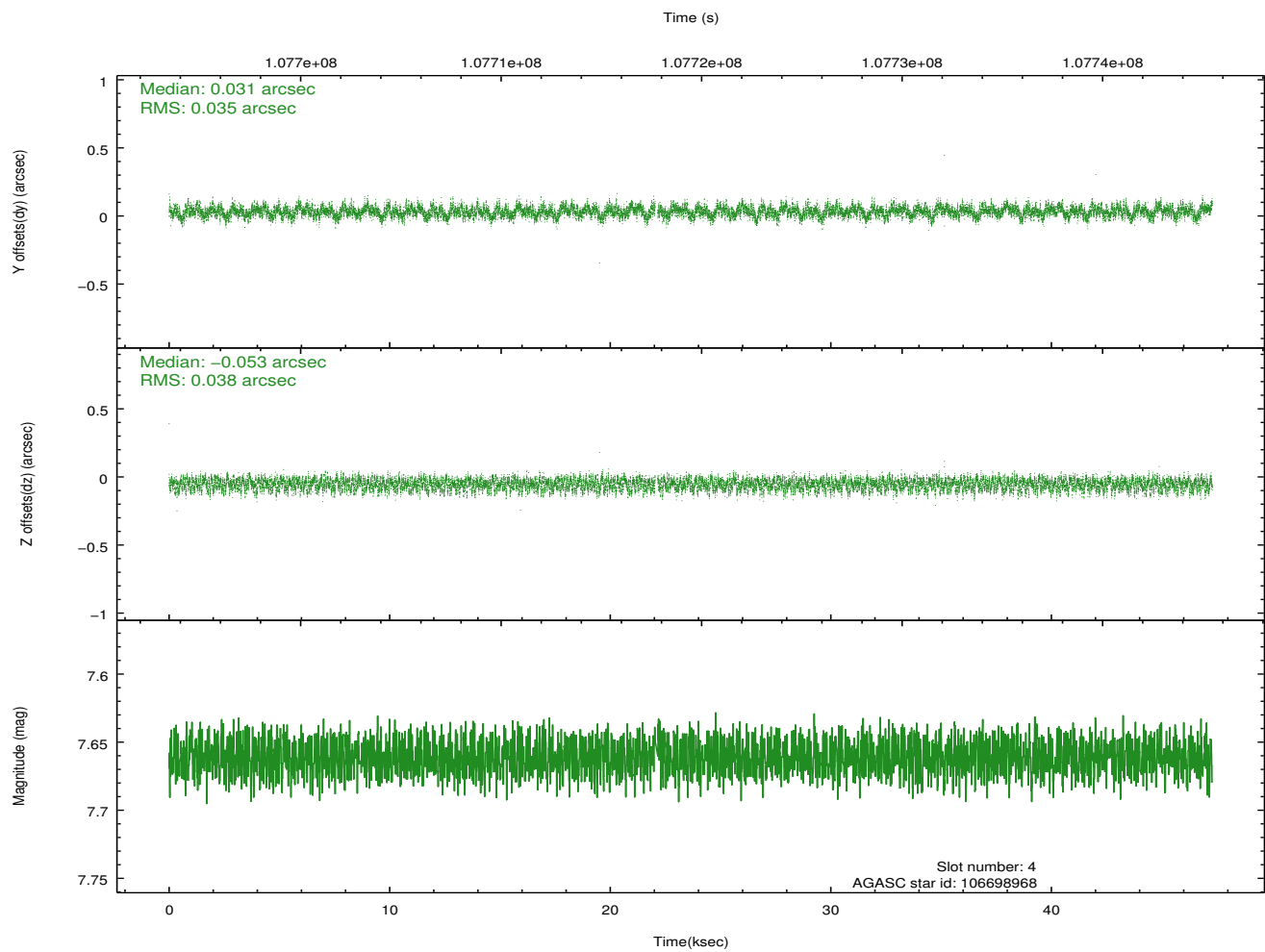
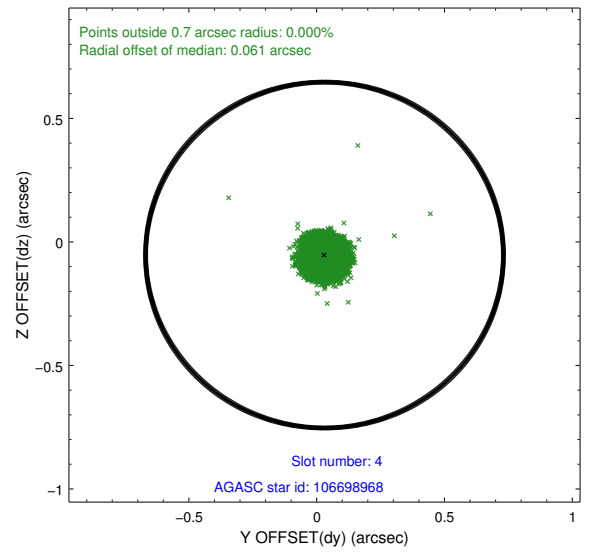
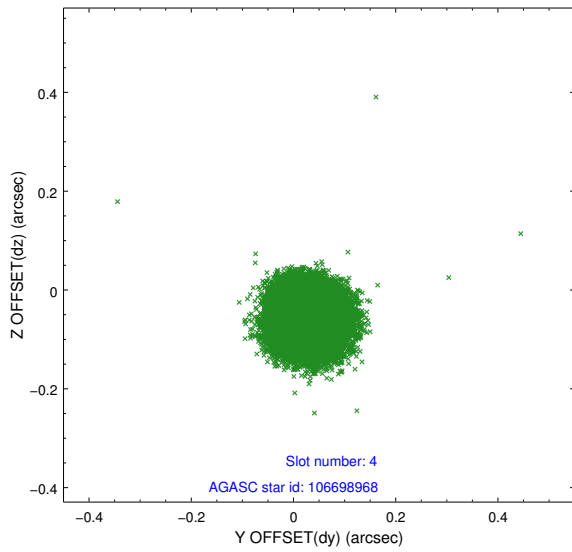
slot	status	id	mag	n_pts	med_dy	med_dz	dr1	dr2	ra	dec	mean_y	mean_z
0	FID	ACIS-I-1	7.24	11529	-0.043	-0.038	0.009	0.031	0.000000	0.000000	937.80	-830.36
1	FID	ACIS-I-4	7.18	11528	-0.013	0.071	0.010	0.025	0.000000	0.000000	2157.88	1069.55
2	FID	ACIS-I-5	7.23	11532	-0.042	0.038	0.011	0.017	0.000000	0.000000	-1810.20	1067.37
3	GUIDE	106712016	7.25	23062	0.052	0.086	0.036	0.060	132.984692	11.135900	2284.18	1308.08
4	GUIDE	106698968	7.66	23007	0.031	-0.053	0.055	0.086	132.955650	11.894157	-268.33	334.94
5	GUIDE	106702400	7.92	23060	0.034	0.058	0.056	0.088	133.126975	11.258985	1703.11	1641.58
6	GUIDE	106573432	7.87	23063	-0.079	-0.152	0.059	0.093	132.391049	12.170735	-575.95	-1867.13
7	GUIDE	106711848	8.90	23051	-0.037	0.064	0.062	0.100	132.833745	12.302905	-1524.72	-543.32

2.4 Star Slots

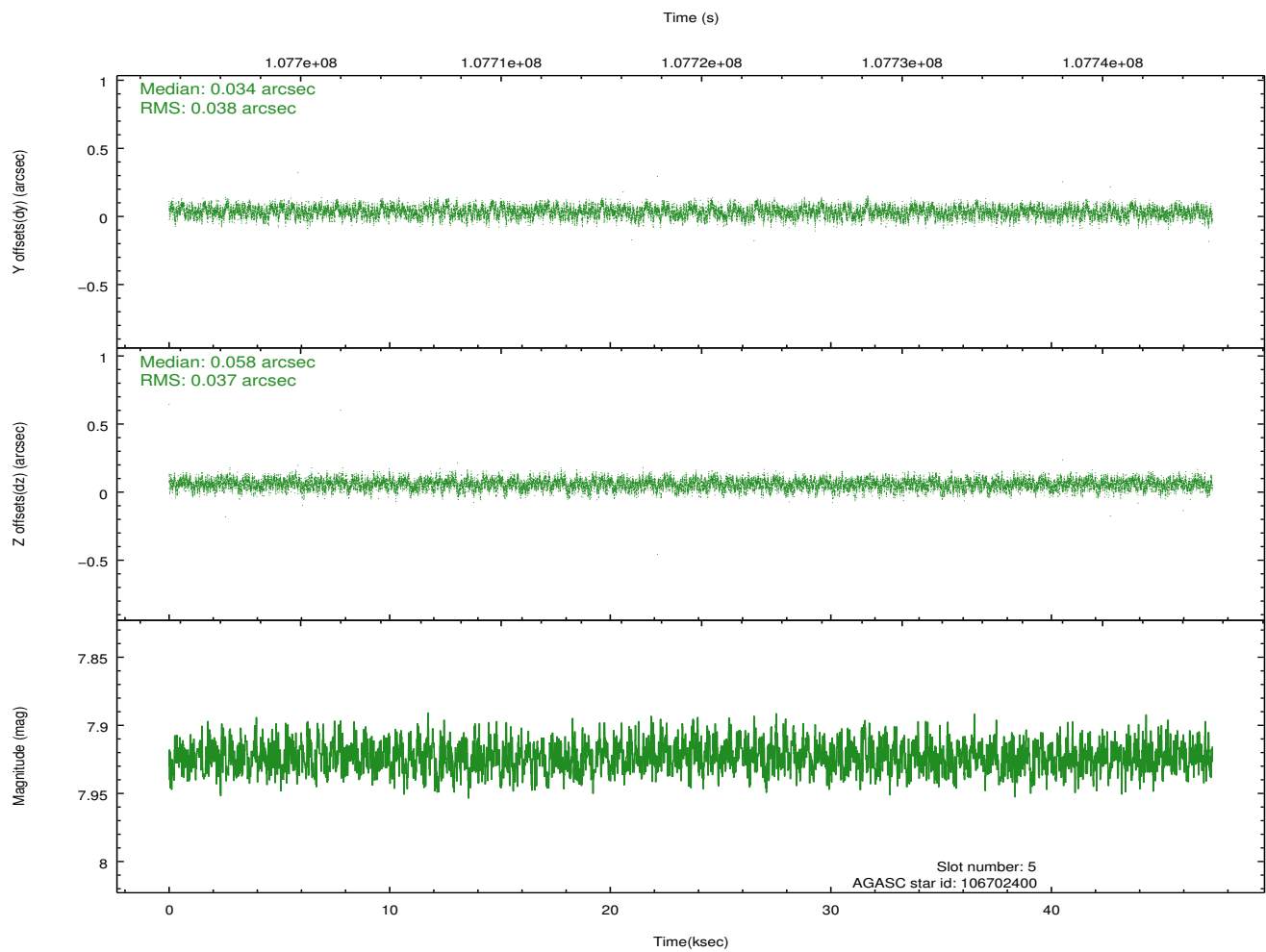
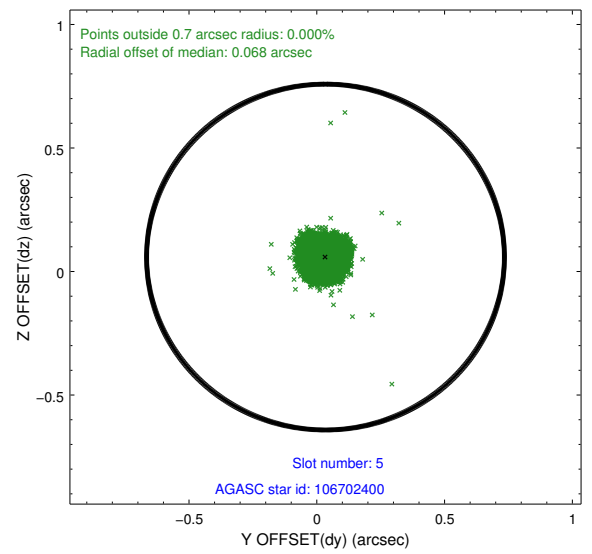
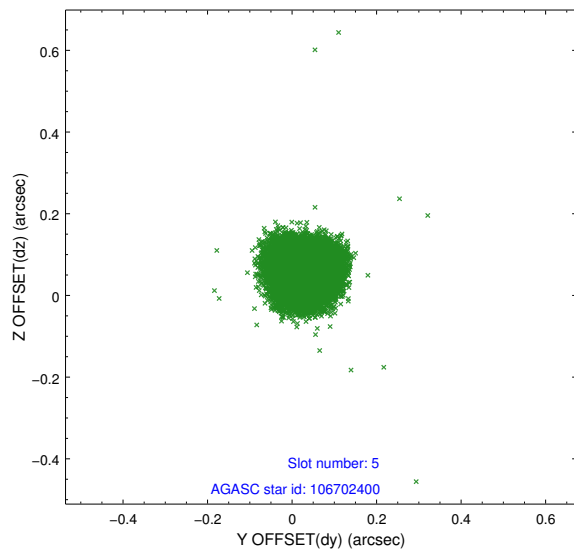
2.4.1 Slot 3



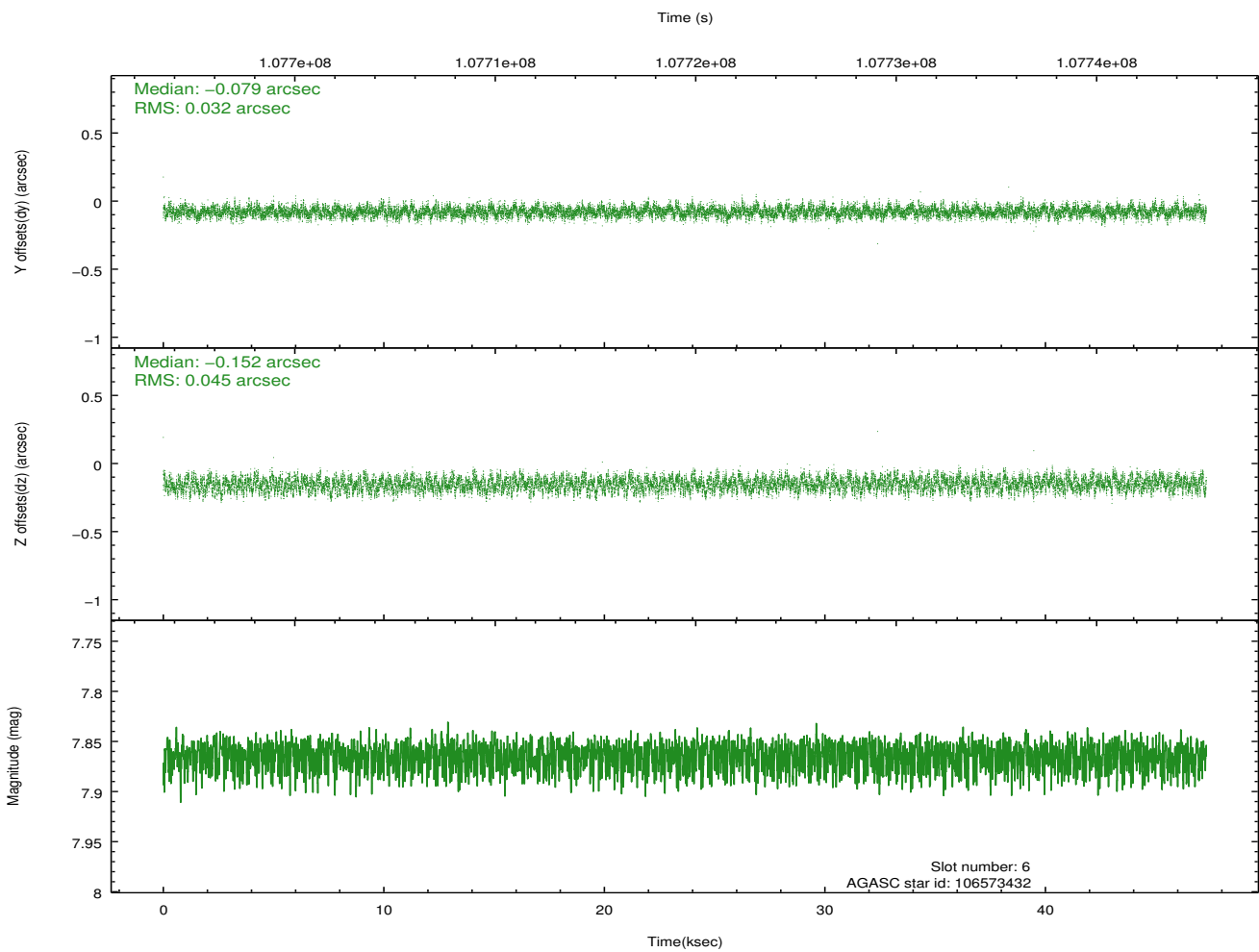
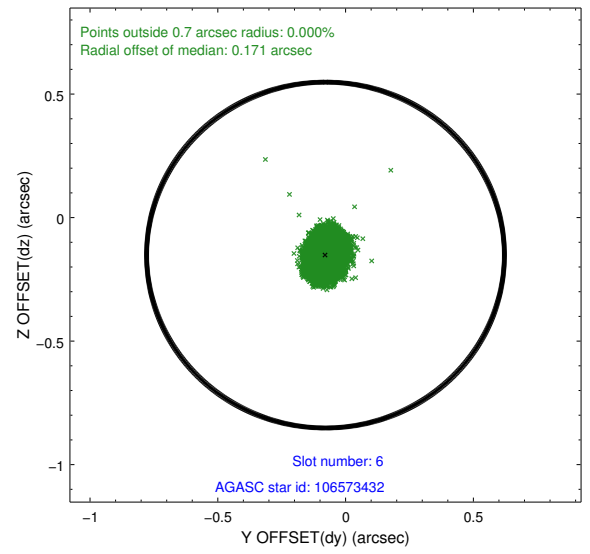
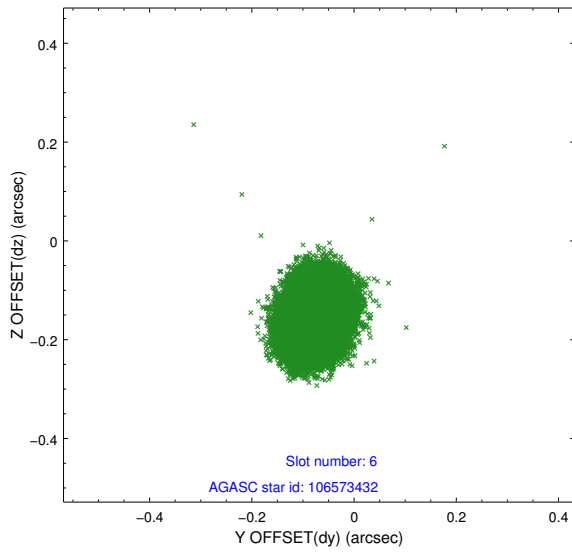
2.4.2 Slot 4



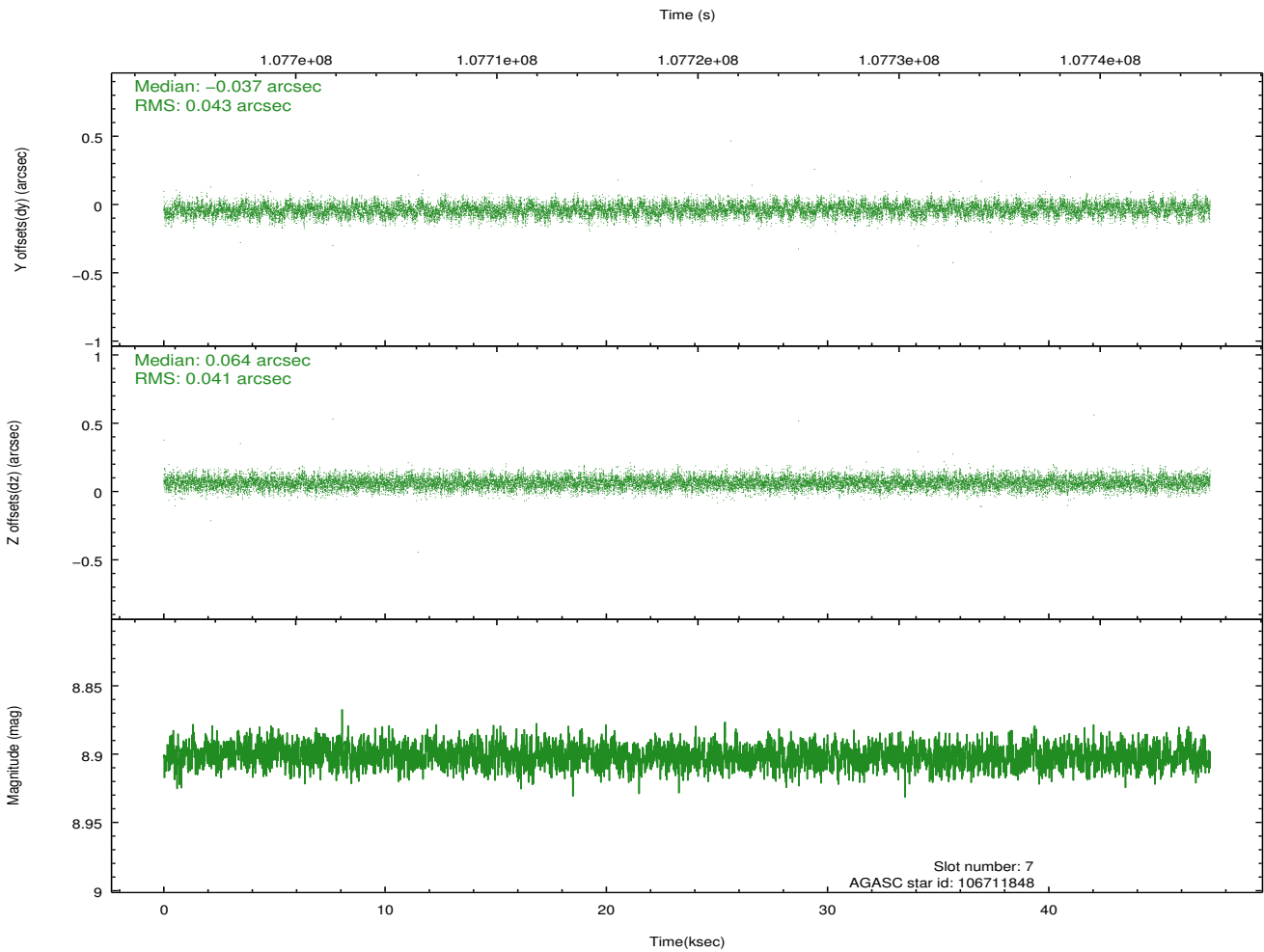
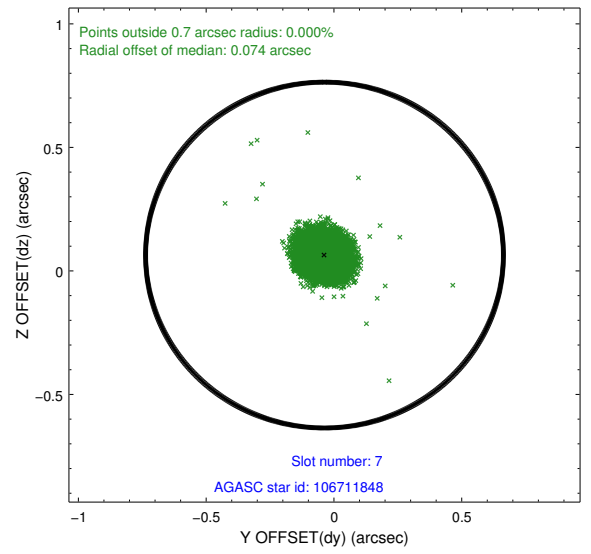
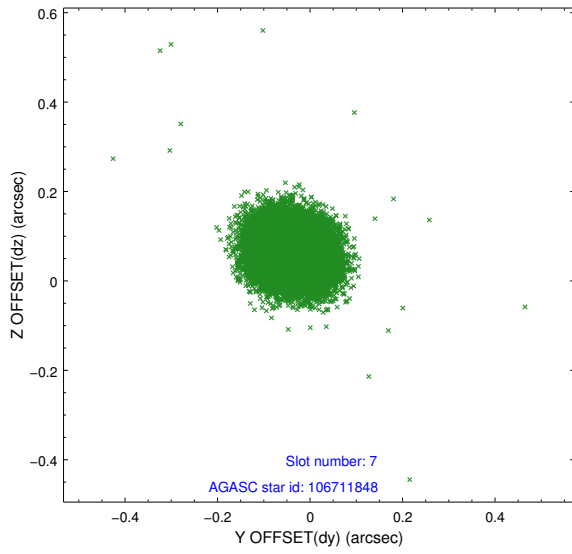
2.4.3 Slot 5



2.4.4 Slot 6

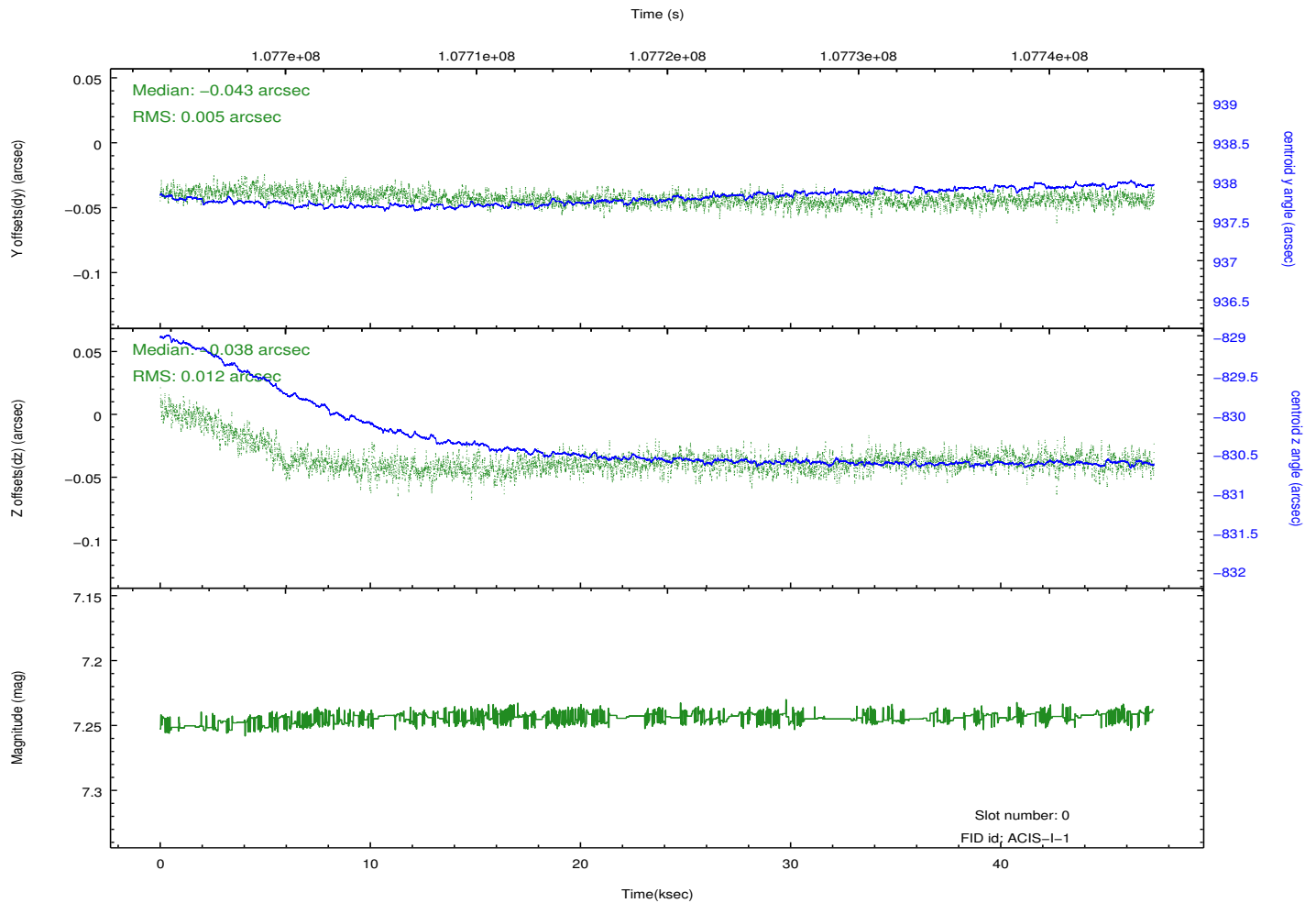
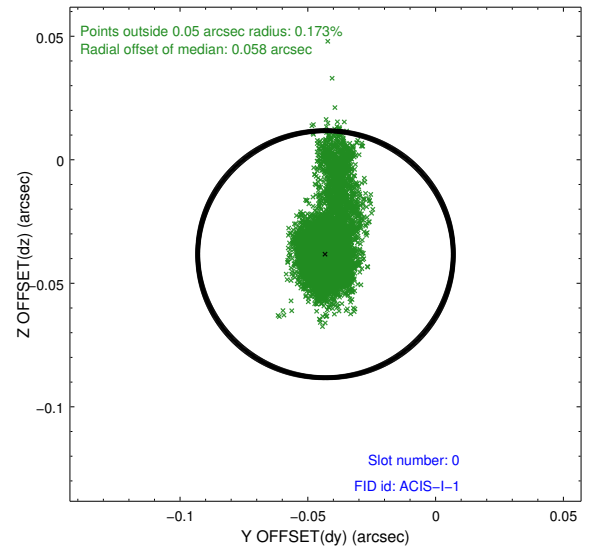
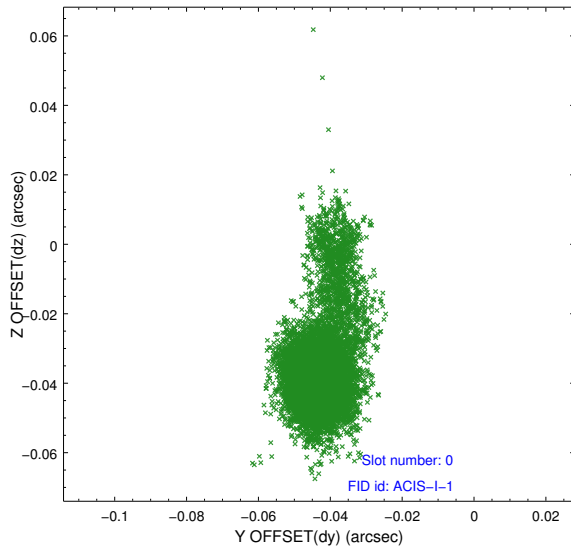


2.4.5 Slot 7

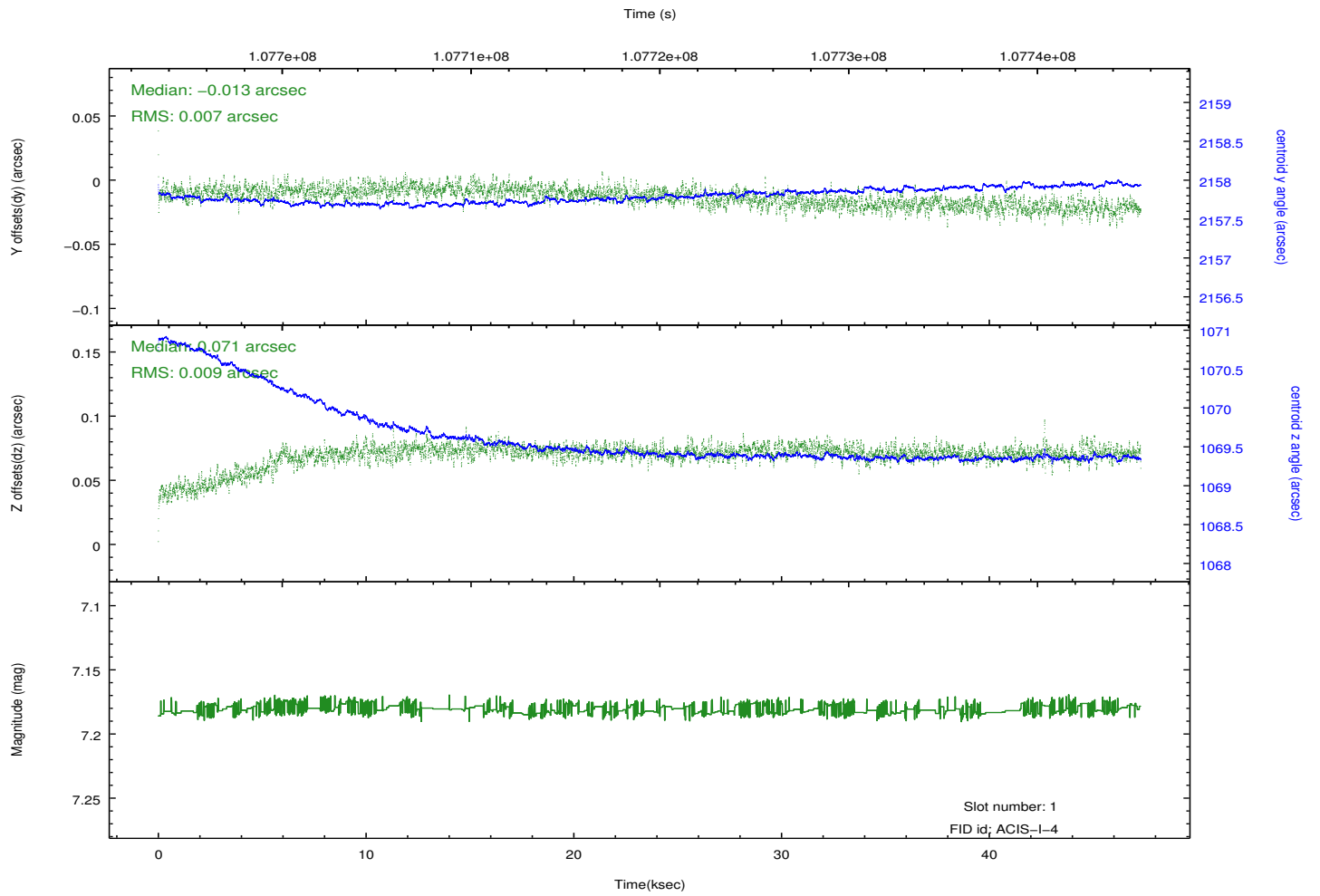
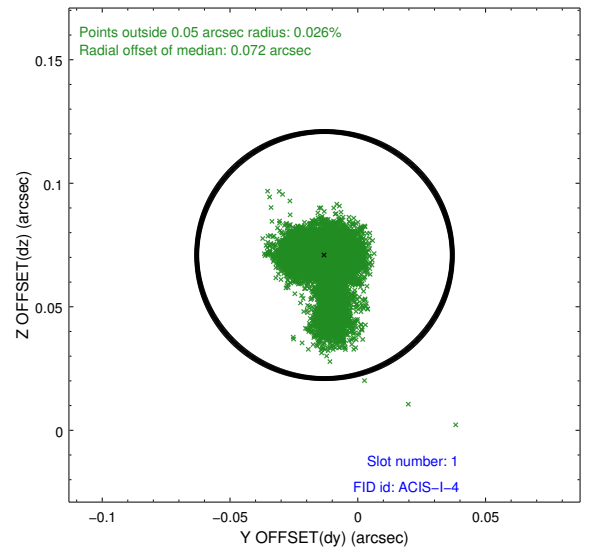
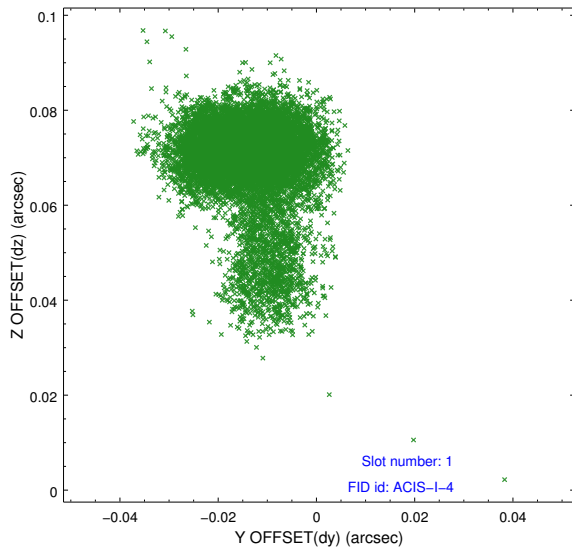


2.5 FID Slots

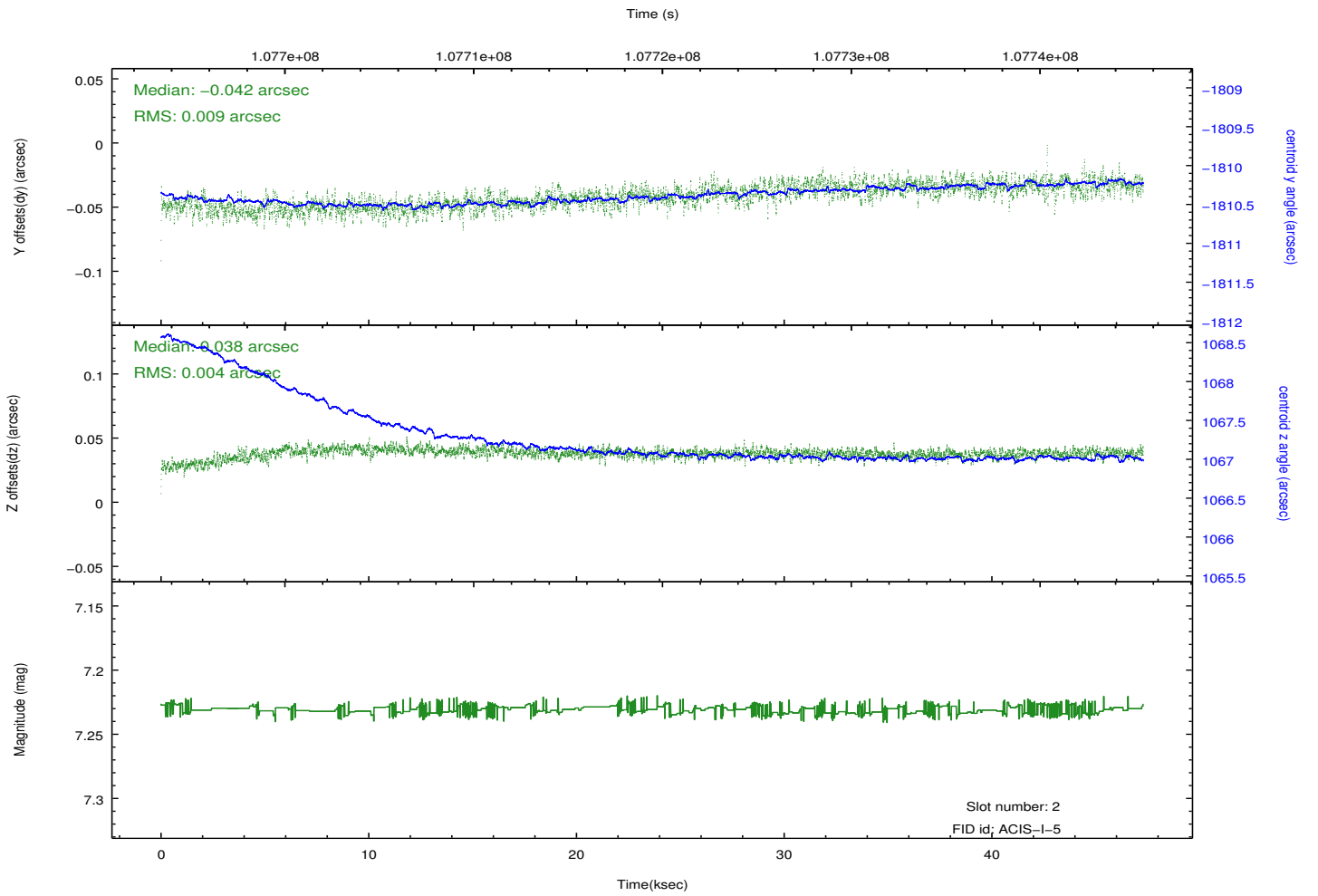
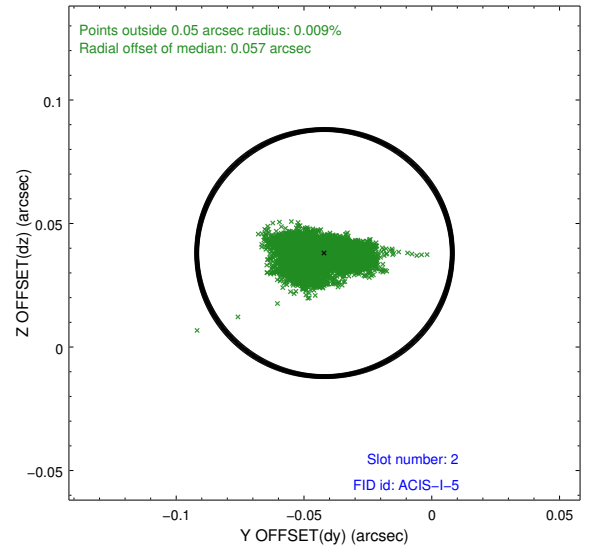
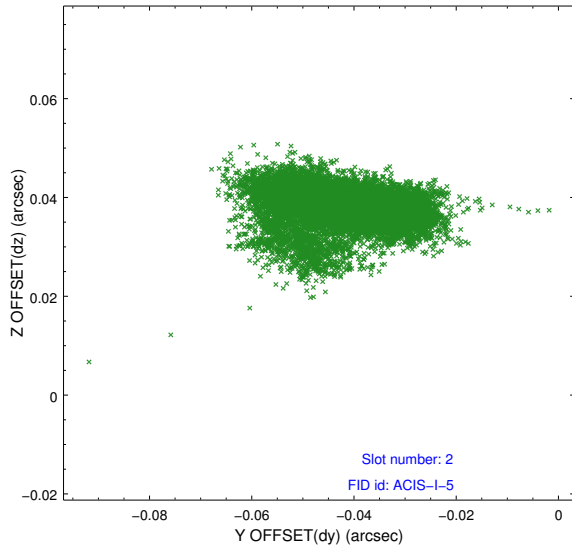
2.5.1 Slot 0



2.5.2 Slot 1



2.5.3 Slot 2



A Summary

A.1 Status

V&V Scientist	Beth Sundheim
V&V Date (YYYY-MM-DD)	2012.09.19
V&V Edition	1
V&V Disposition and Status	OK
V&V Charge Time	46.841

A.2 Comments