

V&V Reference Report

L2 ASCDS Version : 8.4.5

Observation 1893 - L2 Version 3
Chandra X-Ray Center

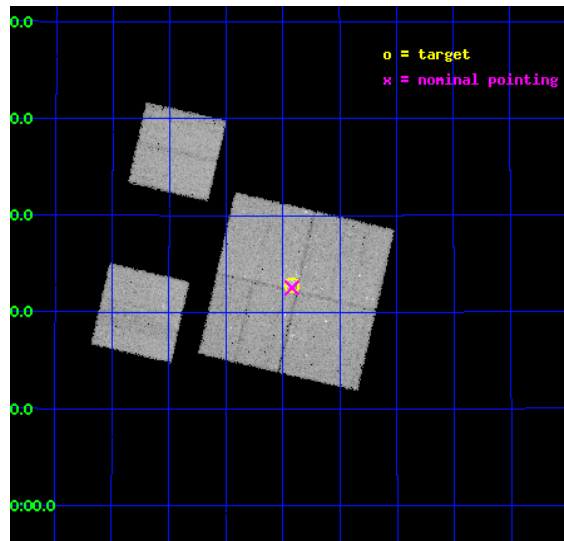
L2 Processing Date : Sep 27 2012

Contents

1	Front	2
2	OBI	3
2.1	OBI	3
2.1.1	Images	3
2.1.2	Bias	3
2.1.3	Parameters	4
2.1.4	Events	4
2.2	Compared Parameters	5
2.3	Aspect	6
2.4	Star Slots	9
2.4.1	Slot 3	9
2.4.2	Slot 4	10
2.4.3	Slot 5	11
2.4.4	Slot 6	12
2.4.5	Slot 7	13
2.5	FID Slots	14
2.5.1	Slot 0	14
2.5.2	Slot 1	15
2.5.3	Slot 2	16
A	Summary	17
A.1	Status	17
A.2	Comments	17

1 Front

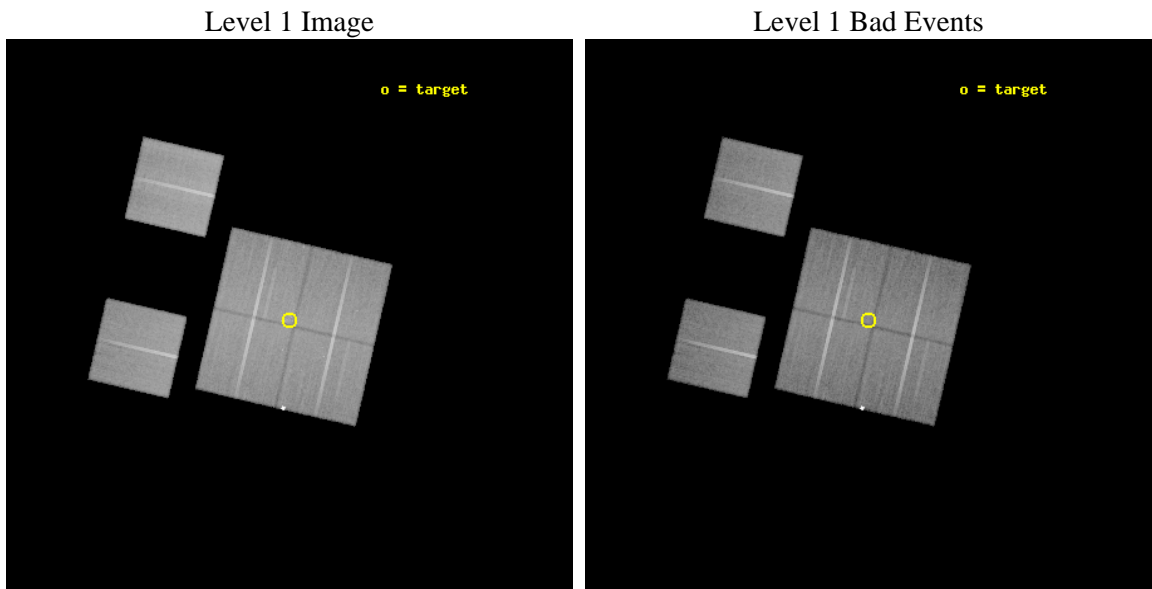
seq_num	200121	Sequence number
obs_id	1893	Observation id
title	X-RAY PROBING OF THE BIRTH OF THE STAR	Proposal title
observer	Dr. Yoshitomo Maeda	Principal investigator
object	S106 FIR	Source name
dtcycle	0	
cycle	P	events from which exps? Prim/Second/Both
ra_targ	306.85625	Observer's specified target RA [deg]
dec_targ	37.380194	Observer's specified target Dec [deg]
ra_nom	306.85521349707	Nominal RA [deg]
dec_nom	37.375559969537	Nominal Dec [deg]
roll_nom	283.03145206699	Nominal Roll [deg]
revision	3	Processing version of data
ontime	44953.559061691	Sum of GTIs [s]
livetime	44384.330029068	Livetime [s]
ontime0	44953.559081614	Sum of GTIs [s]
ontime1	44956.800041854	Sum of GTIs [s]
ontime2	44956.800041854	Sum of GTIs [s]
ontime3	44953.559061691	Sum of GTIs [s]
ontime6	44956.800041854	Sum of GTIs [s]
ontime8	44956.800041854	Sum of GTIs [s]
l2events	180865	Number of level 2 events



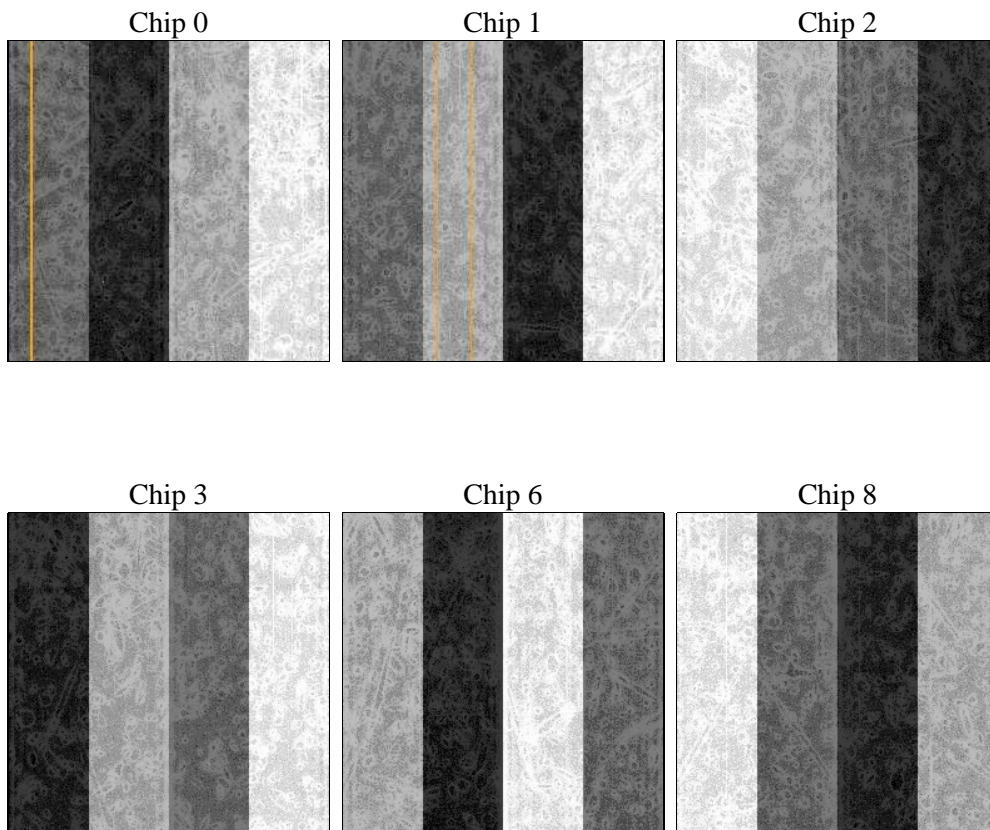
2 OBI

2.1 OBI

2.1.1 Images



2.1.2 Bias



2.1.3 Parameters

obi_num	6	Obi number	sched_exp_time	45000.000000	[s] Scheduled observation exposure time
ascdsver	8.4.5	Processing system revision	ontime	44953.559061691	Sum of GTIs [s]
caldbver	4.5.1.1	 	ontime0	44953.559081614	Sum of GTIs [s]
date	2012-09-27T00:56:46	Date and time of file creation	ontime1	44956.800041854	Sum of GTIs [s]
revision	3	Processing version of data	ontime2	44956.800041854	Sum of GTIs [s]
			ontime3	44953.559061691	Sum of GTIs [s]
			ontime6	44956.800041854	Sum of GTIs [s]
			ontime8	44956.800041854	Sum of GTIs [s]
			l1events	1783930	Number of level 1 events

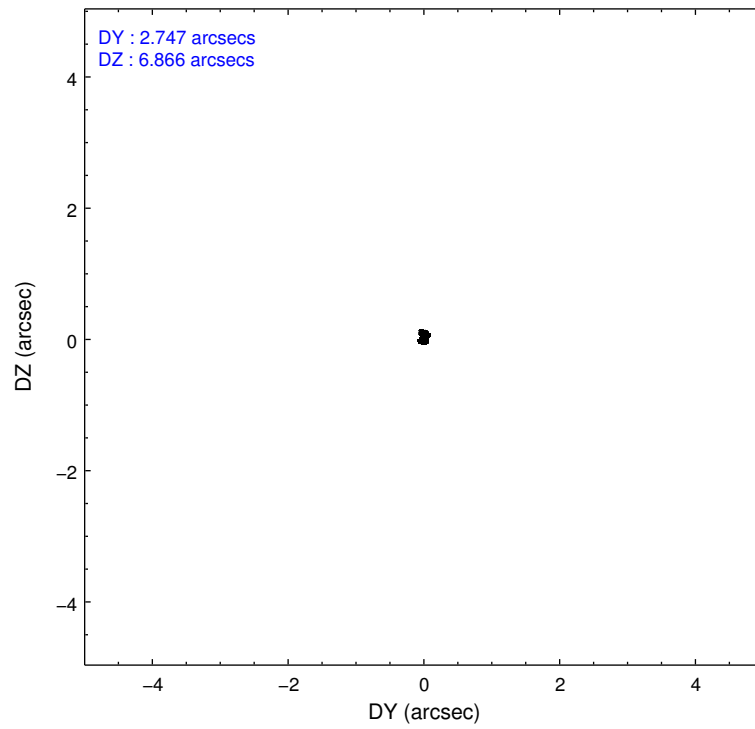
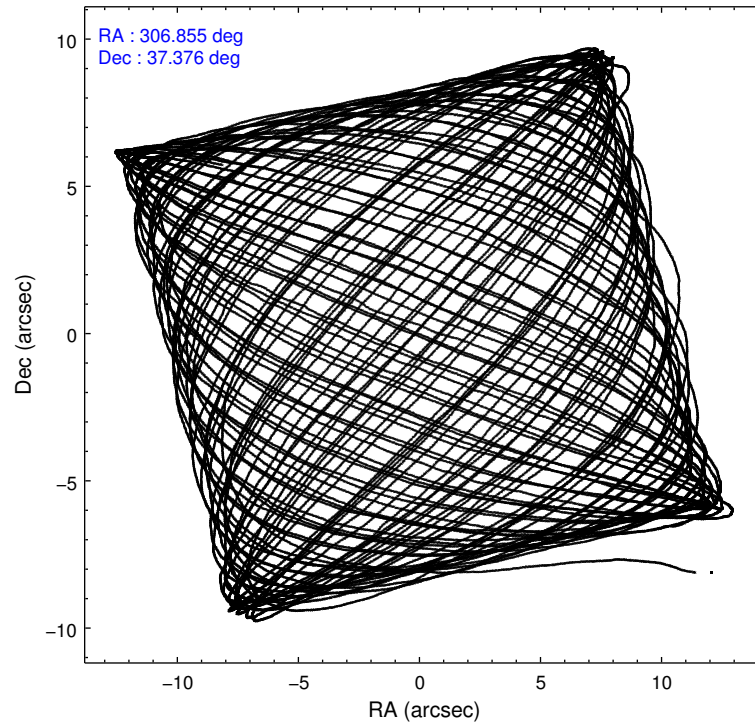
2.1.4 Events

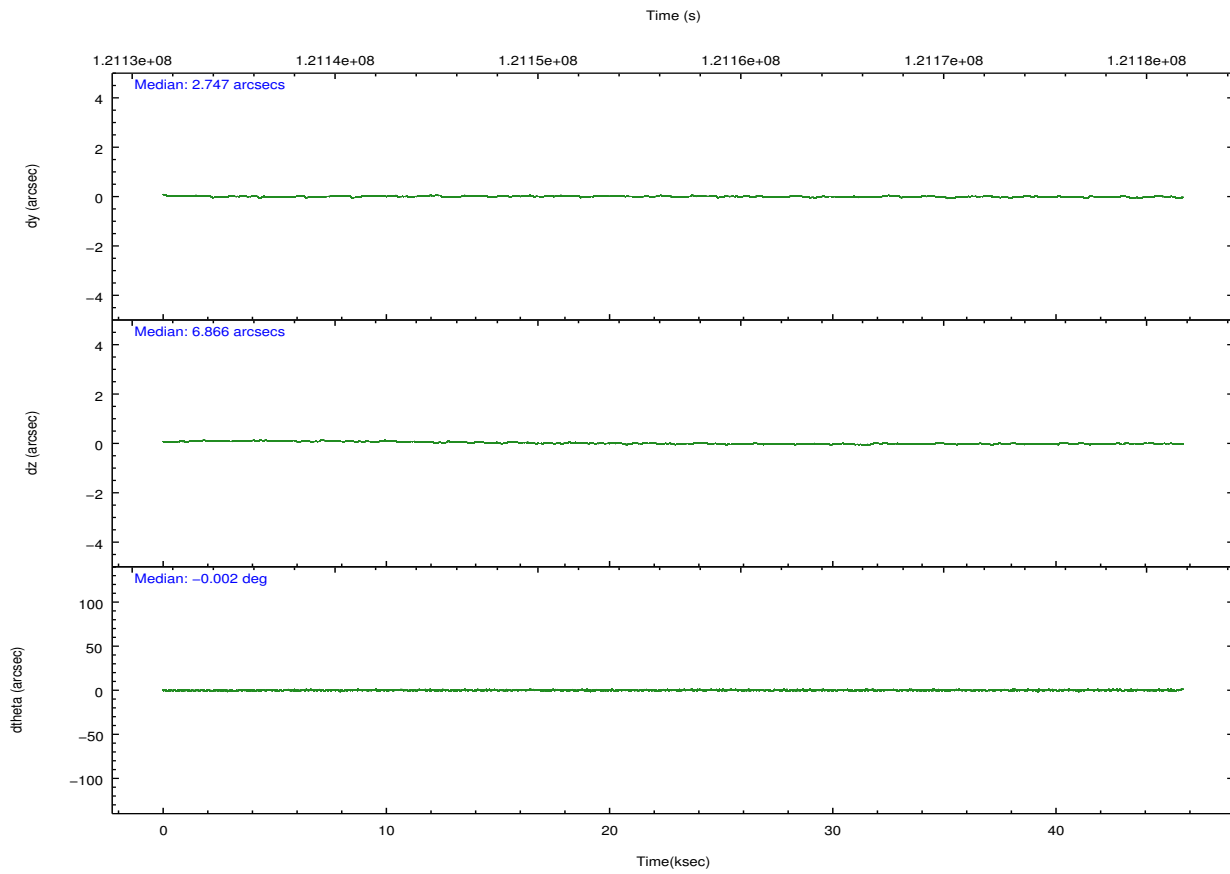
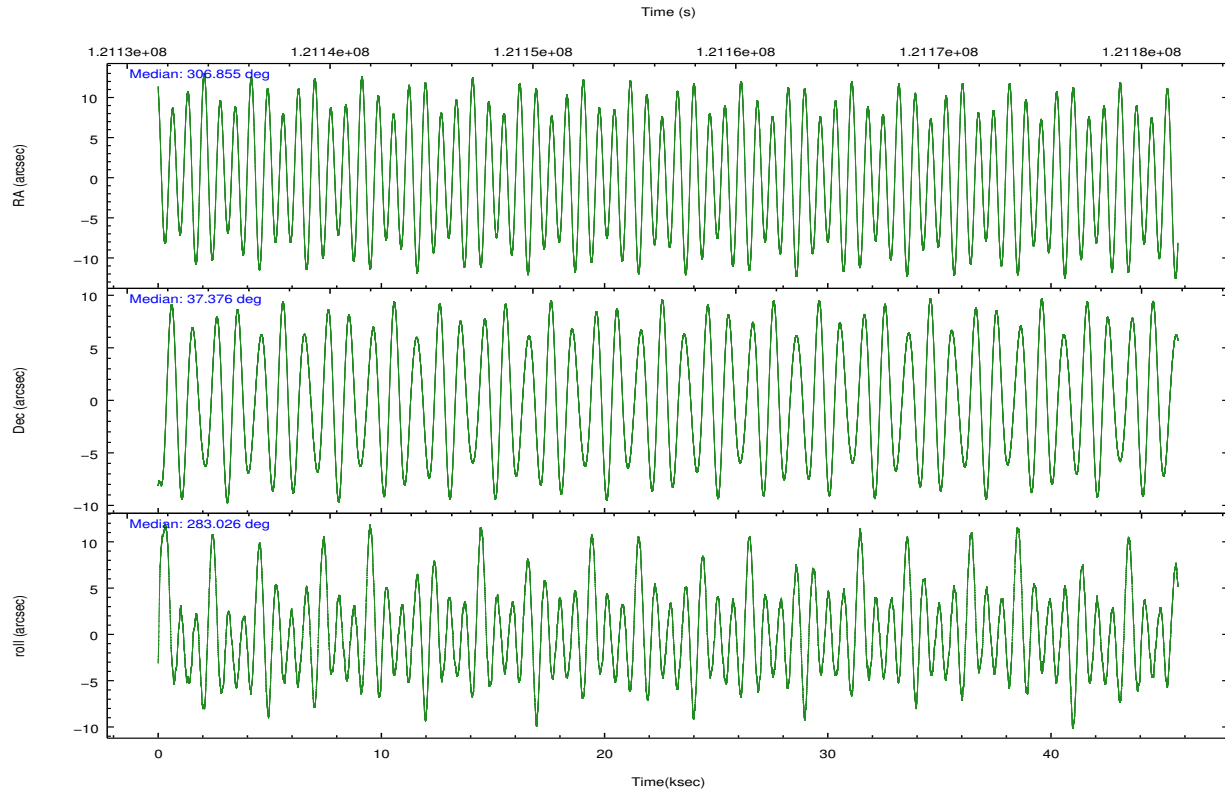
	ccd 0	ccd 1	ccd 2	ccd 3	ccd 6	ccd 8		ccd 0	ccd 1	ccd 2	ccd 3	ccd 6	ccd 8
level 1 events	279235	267766	287336	288351	282804	378438	grade 0 events	14727	15210	14007	15836	13450	23704
rejected events	244543	231161	254095	252675	249492	303327		5%	5%	4%	5%	4%	6%
rejected %	87%	86%	88%	87%	88%	80%	grade 1 events	148	126	156	144	127	254
								0%	0%	0%	0%	0%	0%
							grade 2 events	7451	7512	7276	7242	6888	16377
								2%	2%	2%	2%	2%	4%
							grade 3 events	3477	3575	3057	3223	3300	8069
								1%	1%	1%	1%	1%	2%
							grade 4 events	3099	3558	2978	3279	3124	7513
								1%	1%	1%	1%	1%	1%
							grade 5 events	10536	11218	9775	11156	11903	15809
								3%	4%	3%	3%	4%	4%
							grade 6 events	5949	6755	5924	6098	6554	19451
								2%	2%	2%	2%	2%	5%
							grade 7 events	233848	219812	244163	241373	237458	287261
								83%	82%	84%	83%	83%	75%

2.2 Compared Parameters

Parameter	Planned	Actual	Parameter	Planned	Actual
Instrument	ACIS	ACIS	Obspar format version number	7	7
Detector	ACIS-012368	ACIS-012368	Obspar file type	PREDICTED	ACTUAL
Grating	NONE	NONE	Obspar update status	NONE	UPDATED
Data mode	FAINT	FAINT	Number of optional ACIS chips dropped	0	0
Observation mode	POINTING	POINTING	On-chip summing requested	N	N
[deg] Pointing RA	306.831624	306.8552134970661	Subarray requested	NONE	NONE
[deg] Pointing Dec	37.395559	37.37555996953716	Alternating exposures requested	N	N
[deg] Pointing Roll	282.837086	283.0314520669932	[s] Primary exposure time	0.000000	3.2
[mm] SIM focus pos	-0.782348	-0.7809083437167272			
[mm] SIM defocus	0	0.001439871863259334			
[mm] SIM translation stage pos	-233.592463	-233.5874344608287			
[mm] SIM translation stage offset	0	-0.005018542100998502			
[s] Observation start time (MET)	121134503.184000	121133294.80791			
Observation start date	2001-11-03T00:27:19	2001-11-03T00:08:14			
[s] Observation end time (MET)	121179503.184000	121180476.07229			
Observation end date	2001-11-03T12:57:19	2001-11-03T13:14:36			
Read mode	TIMED	TIMED			

2.3 Aspect



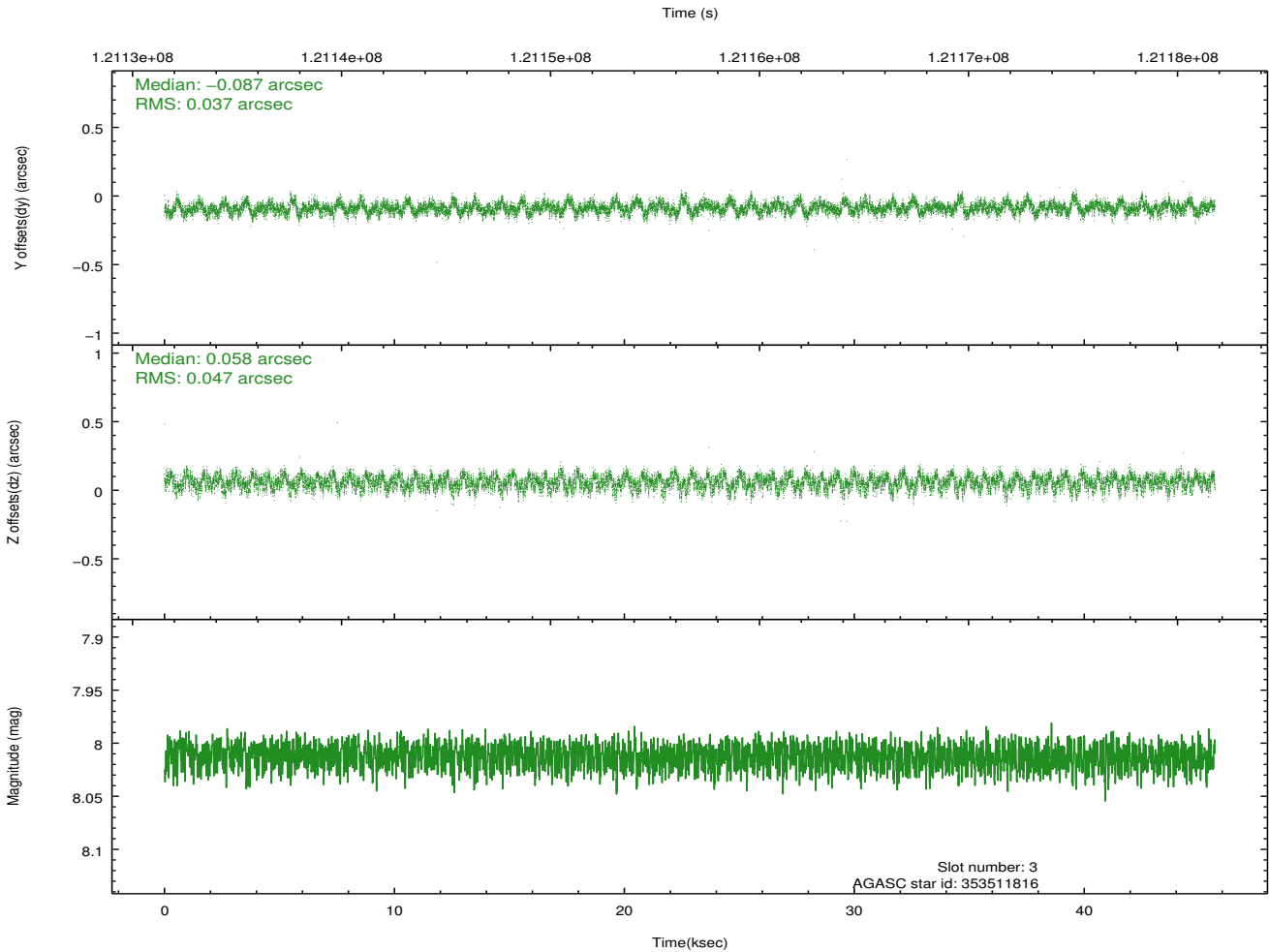
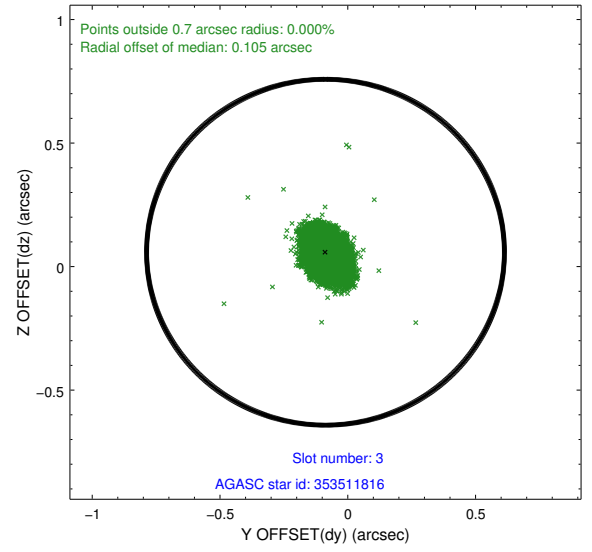
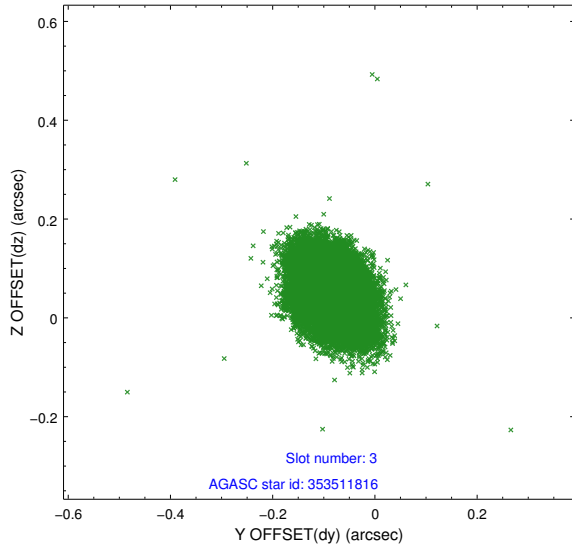


Slot Statistics

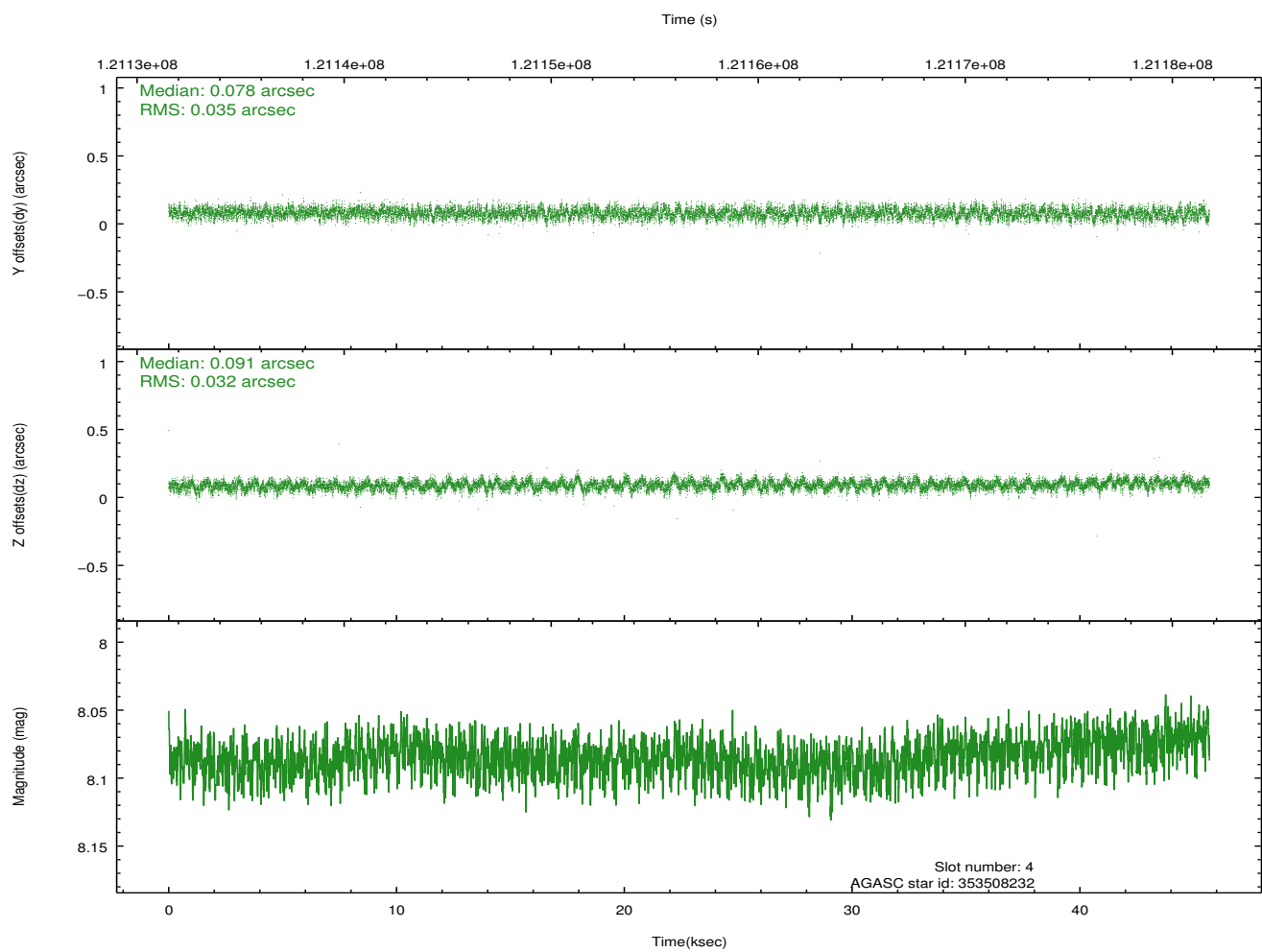
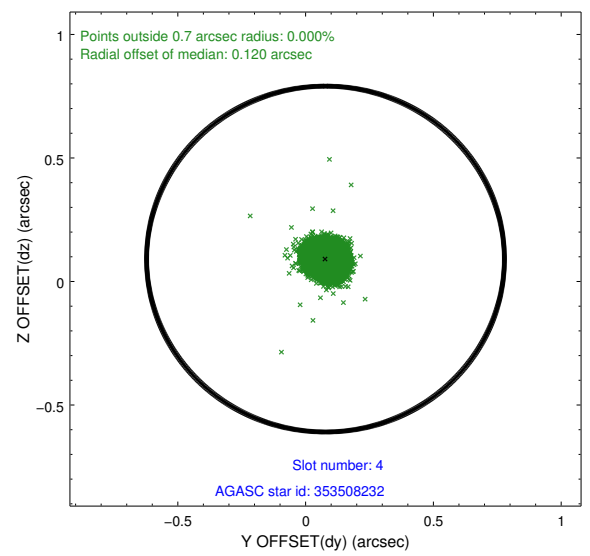
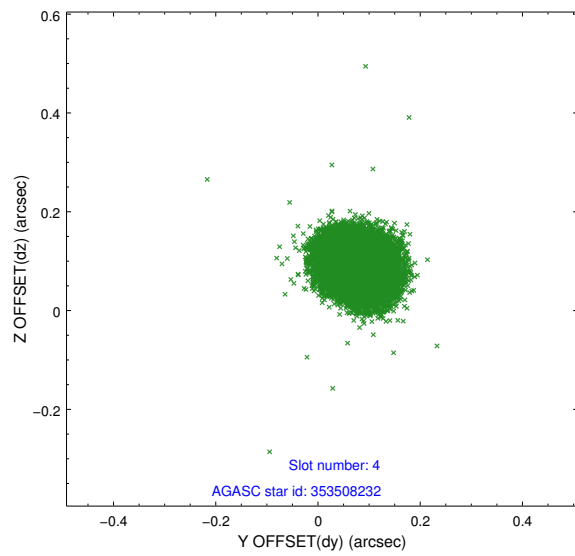
slot	status	id	mag	n_pts	med_dy	med_dz	dr1	dr2	ra	dec	mean_y	mean_z
0	FID	ACIS-I-3	7.44	11140	-0.012	0.151	0.008	0.014	0.000000	0.000000	54.46	-963.35
1	FID	ACIS-I-5	7.24	11139	-0.054	0.020	0.007	0.012	0.000000	0.000000	-1811.20	1067.21
2	FID	ACIS-I-6	7.26	11142	-0.026	-0.102	0.007	0.013	0.000000	0.000000	402.56	1711.62
3	GUIDE	353511816	8.01	22285	-0.087	0.058	0.064	0.104	306.182444	37.062347	749.77	-2083.54
4	GUIDE	353508232	8.08	22285	0.078	0.091	0.050	0.080	307.449018	36.980378	1846.80	1400.29
5	GUIDE	413142704	8.50	22277	-0.022	-0.147	0.091	0.141	306.075272	37.575430	-1118.38	-1958.71
6	GUIDE	413147024	8.72	22278	-0.047	-0.032	0.058	0.095	306.990549	38.009347	-2054.16	930.02
7	GUIDE	353502640	9.31	22271	0.082	0.029	0.099	0.159	307.735771	37.200510	1249.03	2374.50

2.4 Star Slots

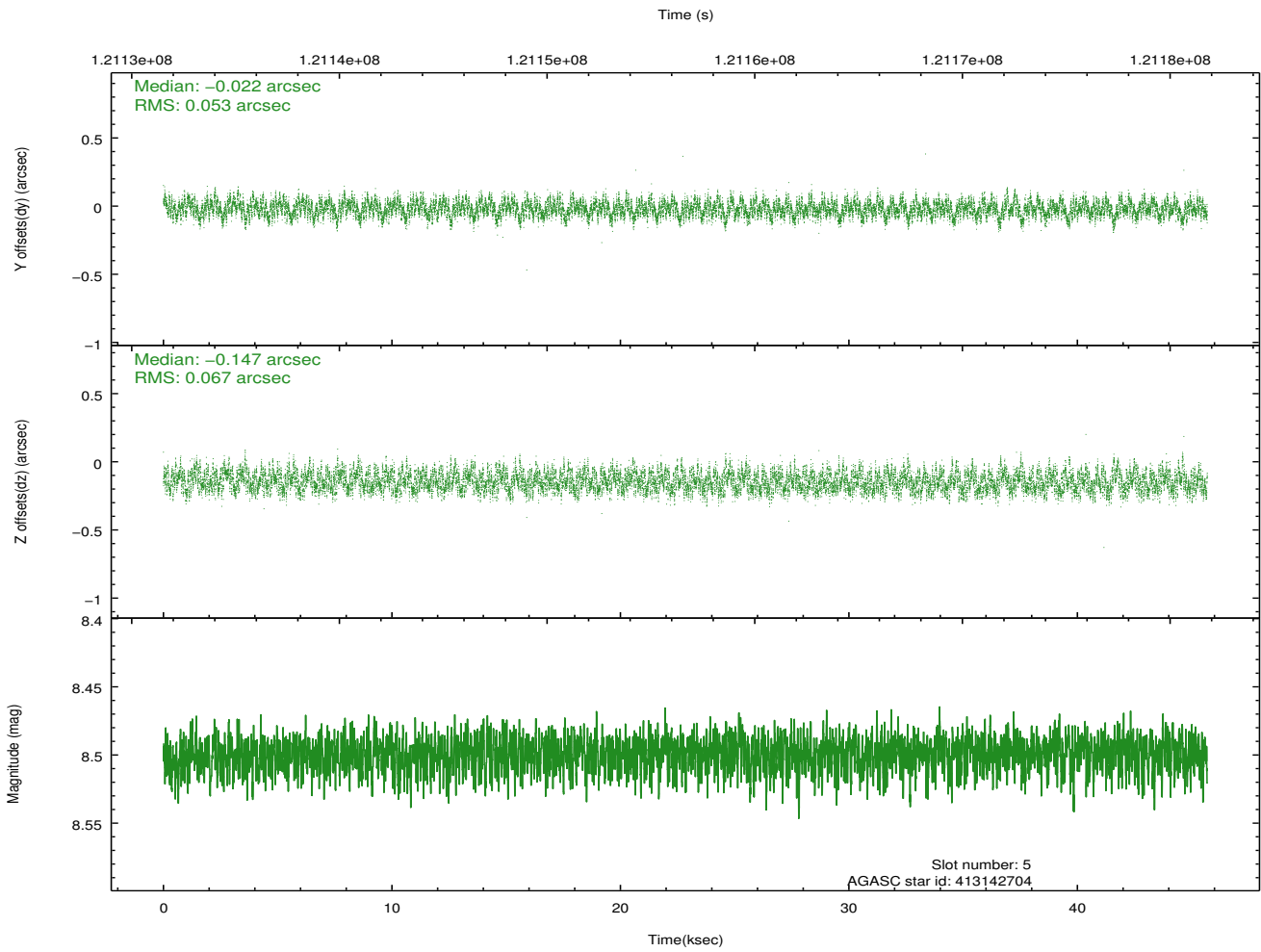
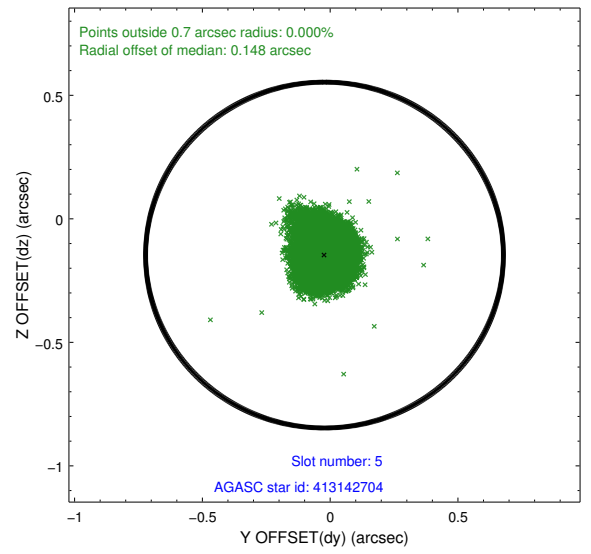
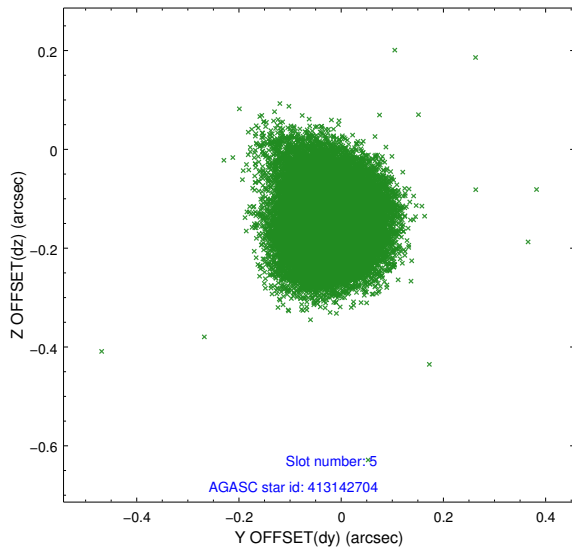
2.4.1 Slot 3



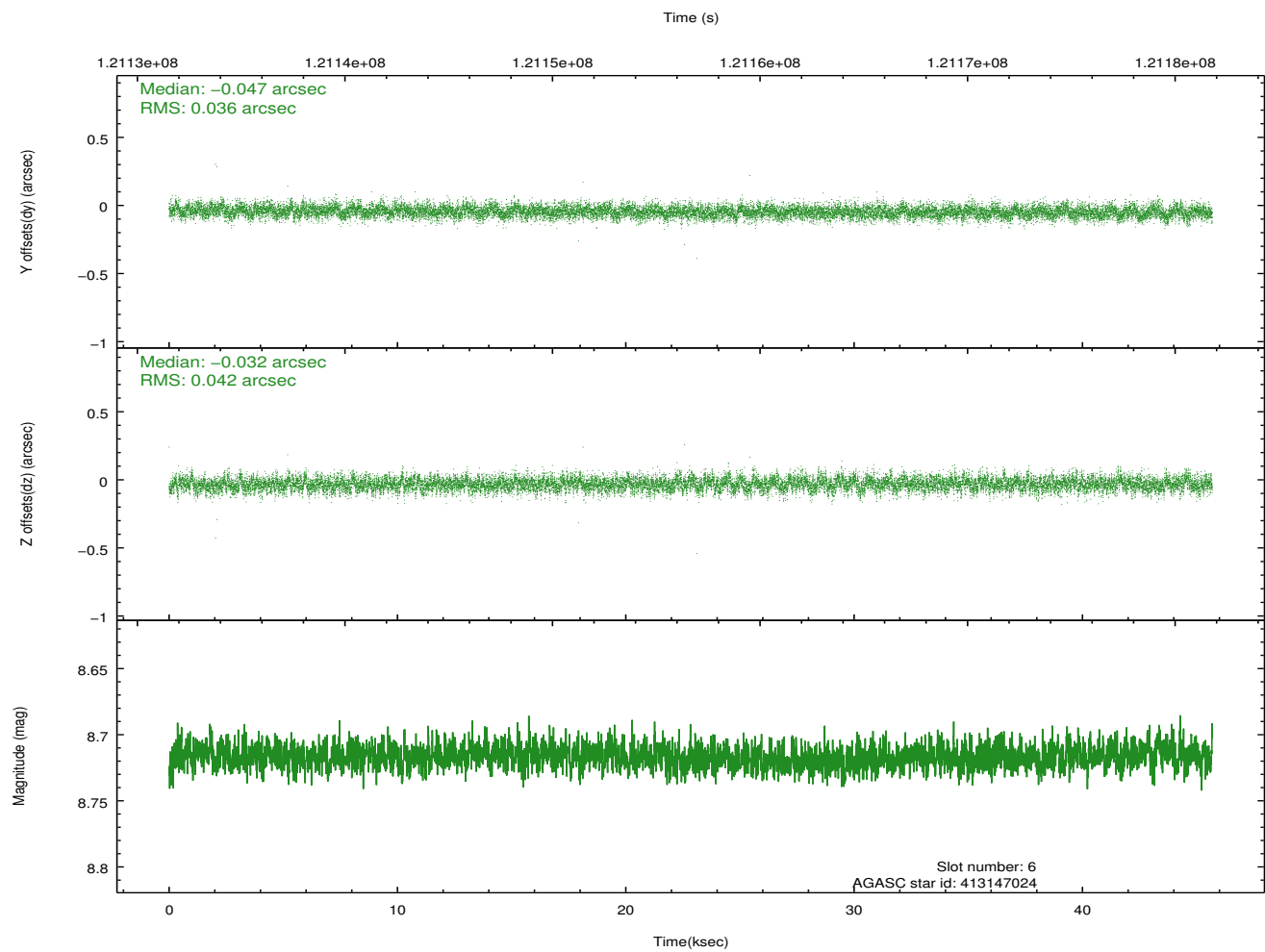
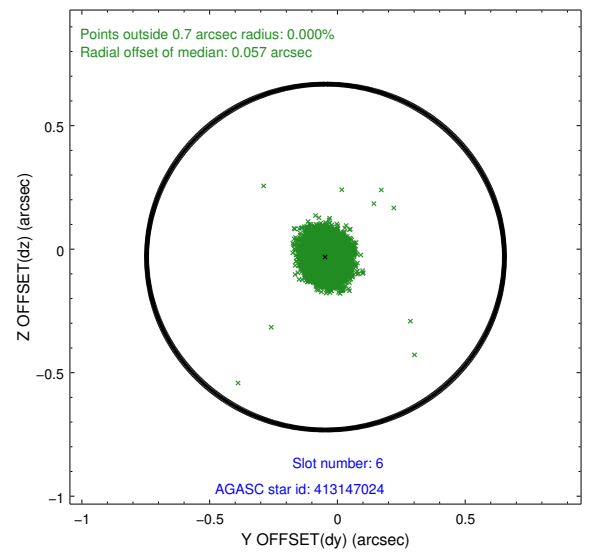
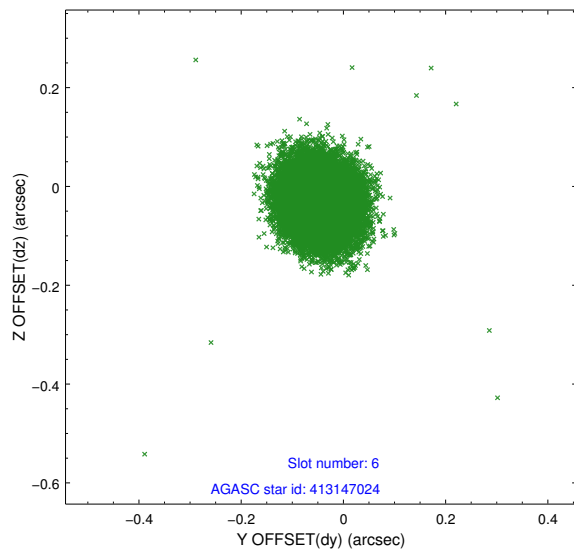
2.4.2 Slot 4



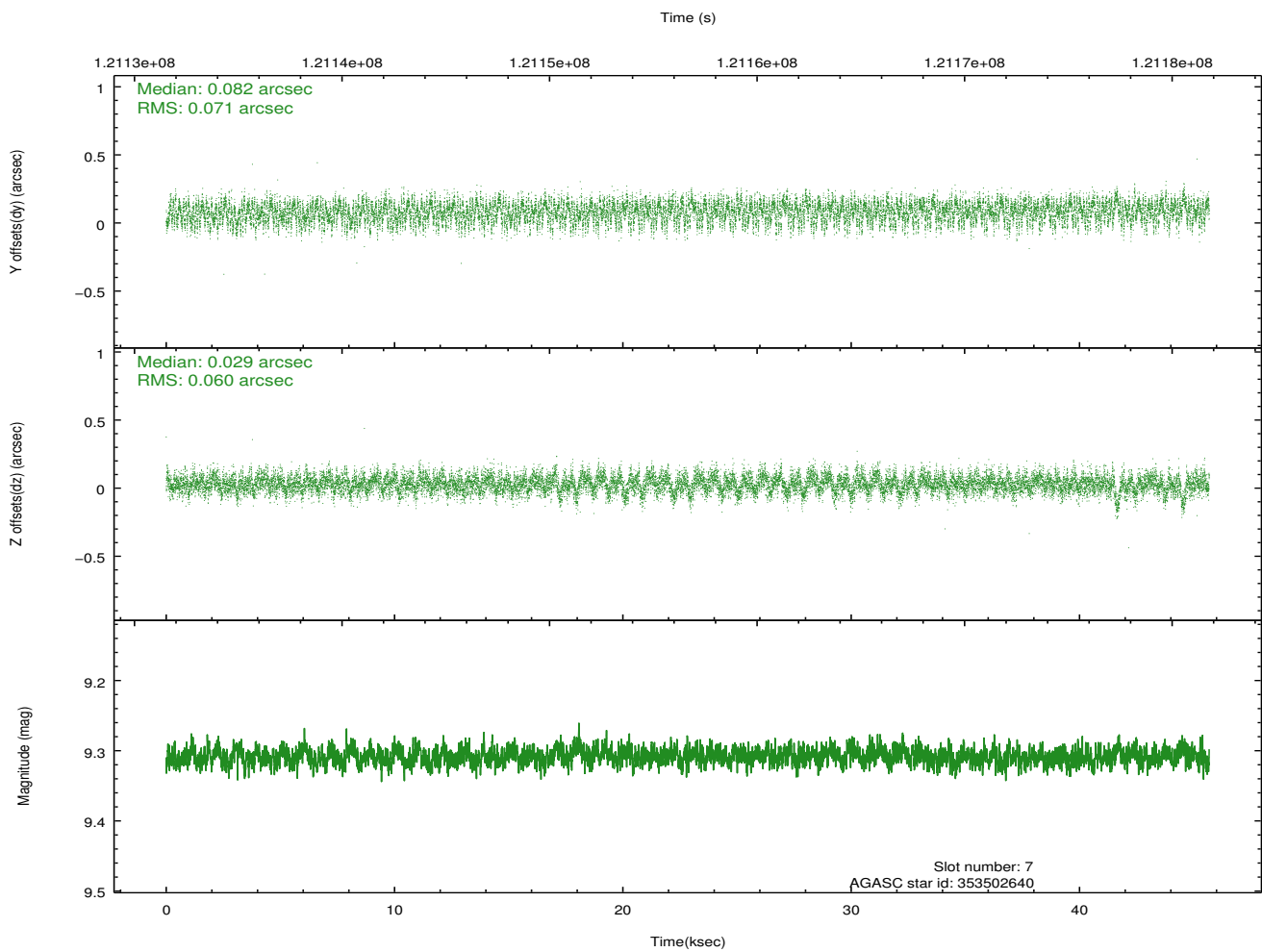
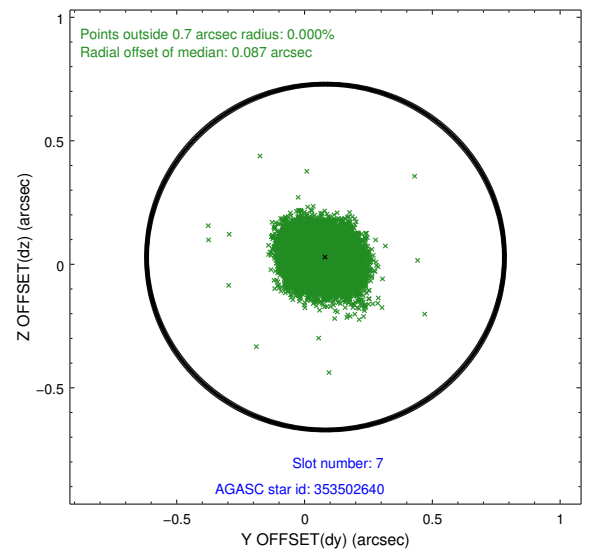
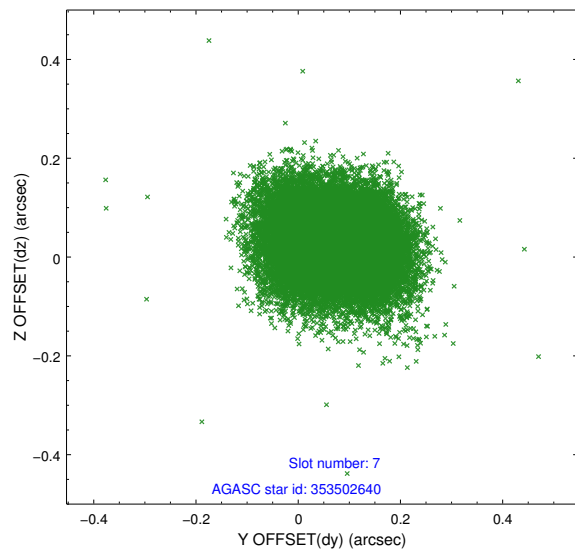
2.4.3 Slot 5



2.4.4 Slot 6

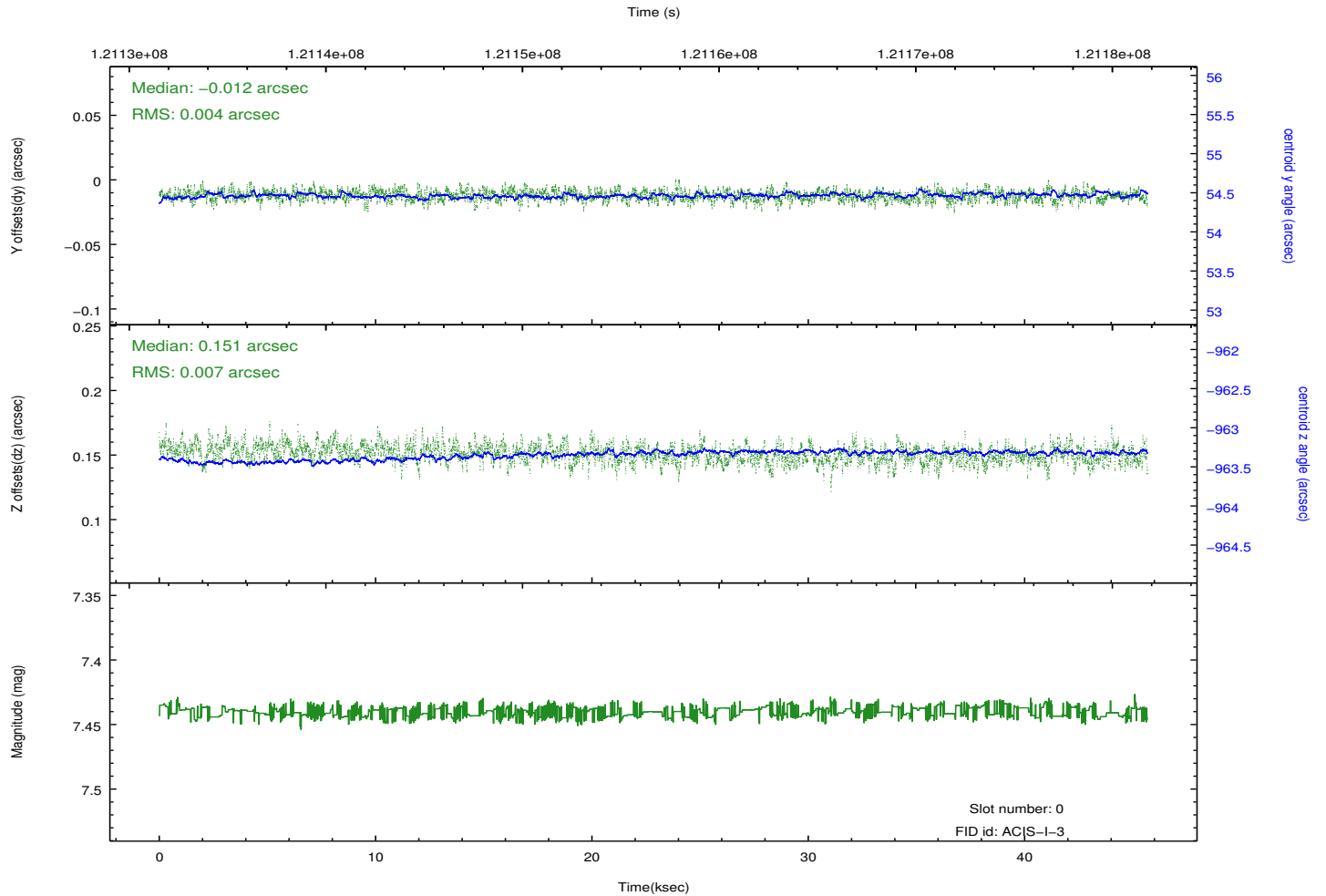
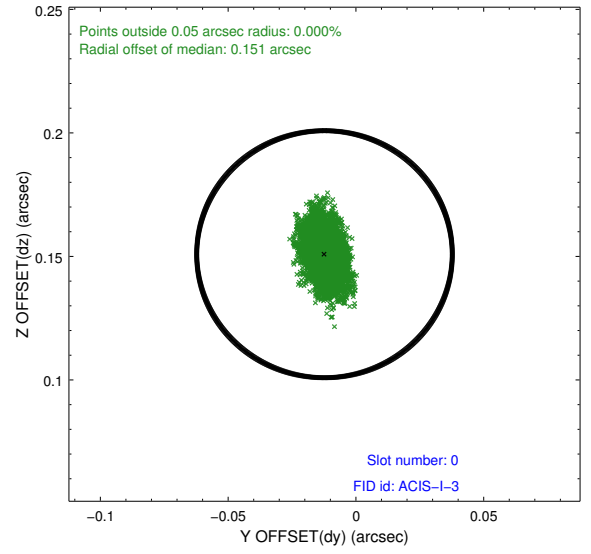
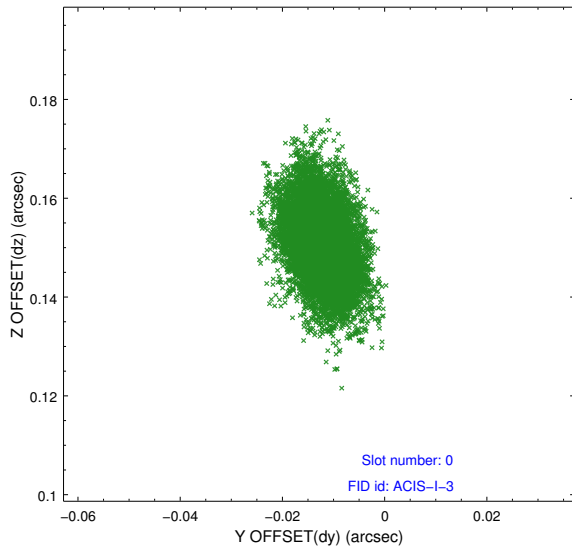


2.4.5 Slot 7

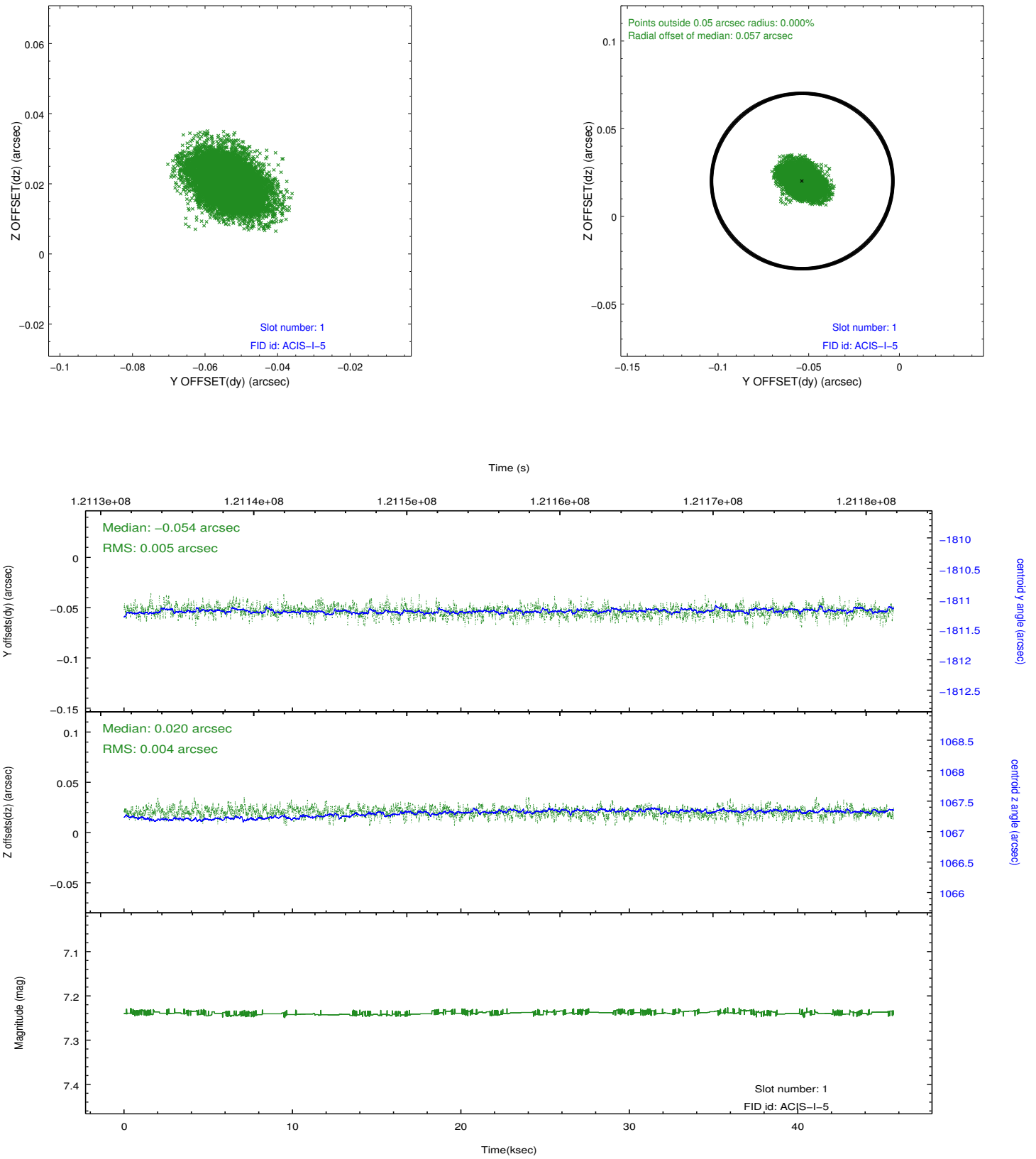


2.5 FID Slots

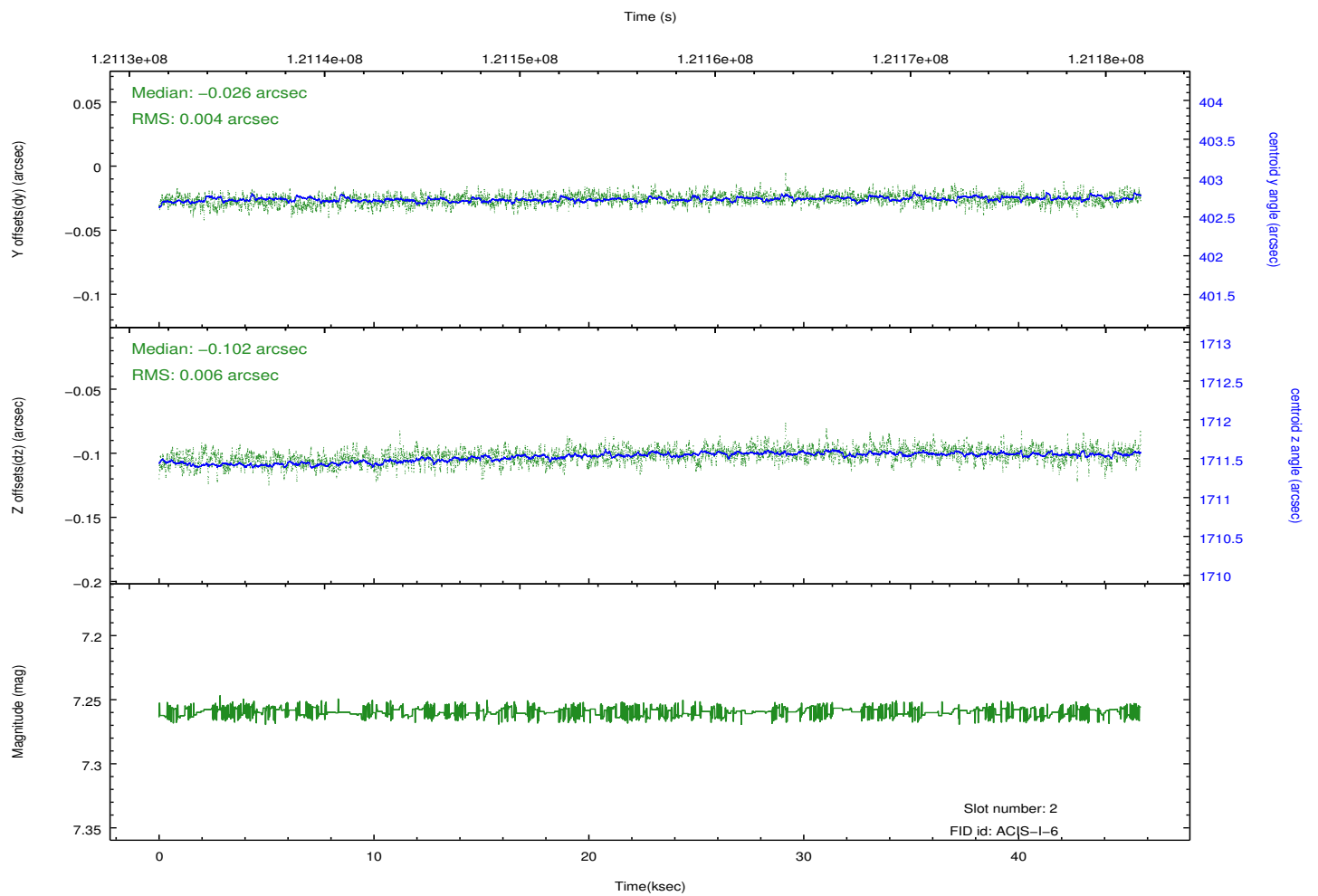
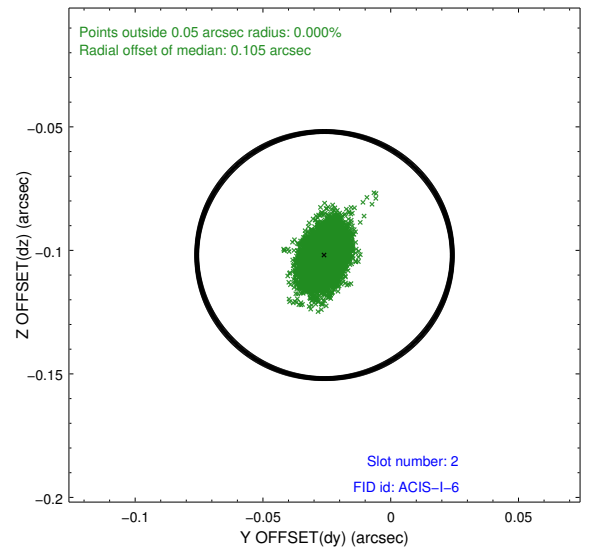
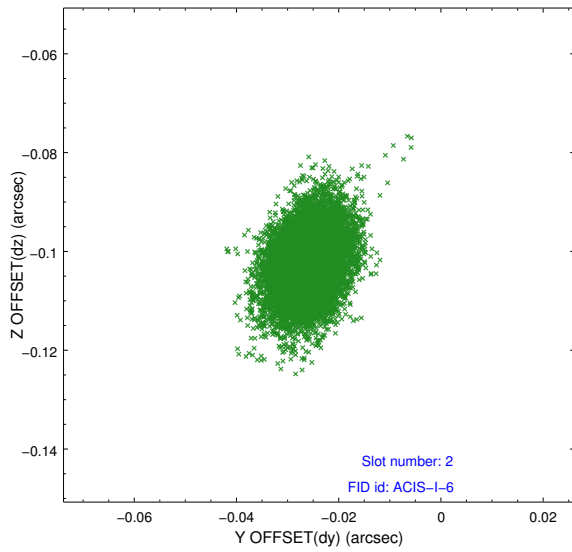
2.5.1 Slot 0



2.5.2 Slot 1



2.5.3 Slot 2



A Summary

A.1 Status

V&V Scientist	Beth Sundheim
V&V Date (YYYY-MM-DD)	2012.09.28
V&V Edition	1
V&V Disposition and Status	OK
V&V Charge Time	44.956

A.2 Comments