

V&V Reference Report

L2 ASCDS Version : 8.4.5

Observation 2043 - L2 Version 3
Chandra X-Ray Center

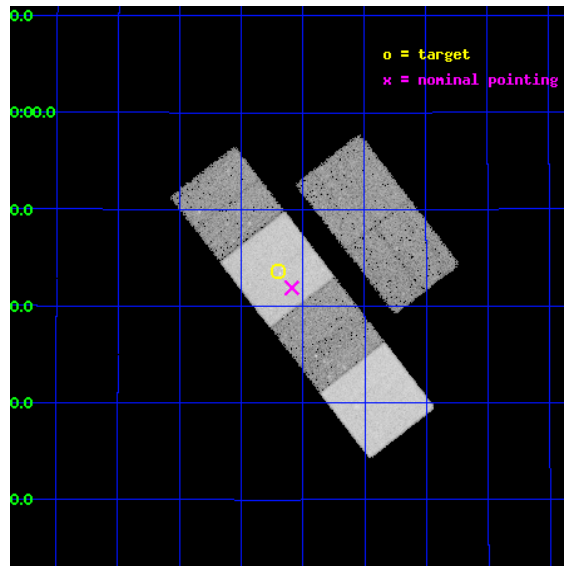
L2 Processing Date : Sep 17 2012

Contents

1	Front	2
2	OBI	3
2.1	OBI	3
2.1.1	Images	3
2.1.2	Bias	3
2.1.3	Parameters	4
2.1.4	Events	4
2.2	Compared Parameters	5
2.3	Aspect	6
2.4	Star Slots	9
2.4.1	Slot 3	9
2.4.2	Slot 4	10
2.4.3	Slot 5	11
2.4.4	Slot 6	12
2.4.5	Slot 7	13
2.5	FID Slots	14
2.5.1	Slot 0	14
2.5.2	Slot 1	15
2.5.3	Slot 2	16
A	Summary	17
A.1	Status	17
A.2	Comments	17

1 Front

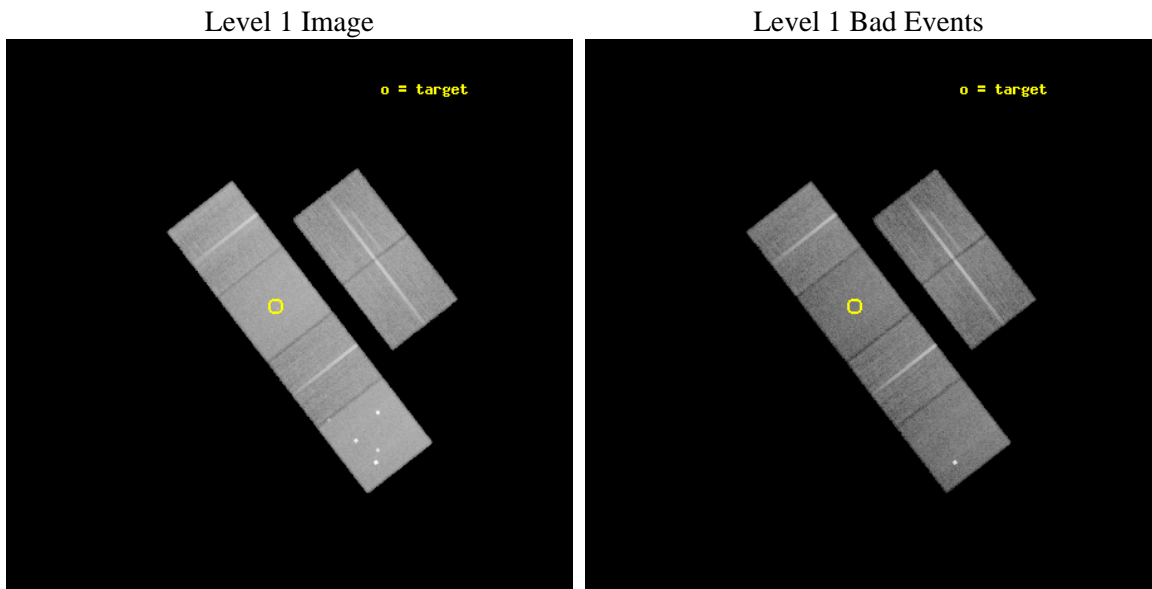
seq_num	600177	Sequence number
obs_id	2043	Observation id
title	THE EVOLUTION OF GAS EJECTION FROM MERGING GALAXIES	Proposal title
observer	Dr. Andrew Read	Principal investigator
object	ARP 242	Source name
dtcycle	0	
cycle	P	events from which exps? Prim/Second/Both
ra_targ	191.550833	Observer's specified target RA [deg]
dec_targ	30.726944	Observer's specified target Dec [deg]
ra_nom	191.52246251641	Nominal RA [deg]
dec_nom	30.698448584752	Nominal Dec [deg]
roll_nom	232.22296491415	Nominal Roll [deg]
revision	3	Processing version of data
ontime	28913.888440683	Sum of GTIs [s]
livetime	28547.763375394	Livetime [s]
ontime2	28904.206599876	Sum of GTIs [s]
ontime3	28910.524380371	Sum of GTIs [s]
ontime5	28904.124480054	Sum of GTIs [s]
ontime6	28907.324450135	Sum of GTIs [s]
ontime7	28913.888440683	Sum of GTIs [s]
ontime8	28913.724280685	Sum of GTIs [s]
l2events	268054	Number of level 2 events



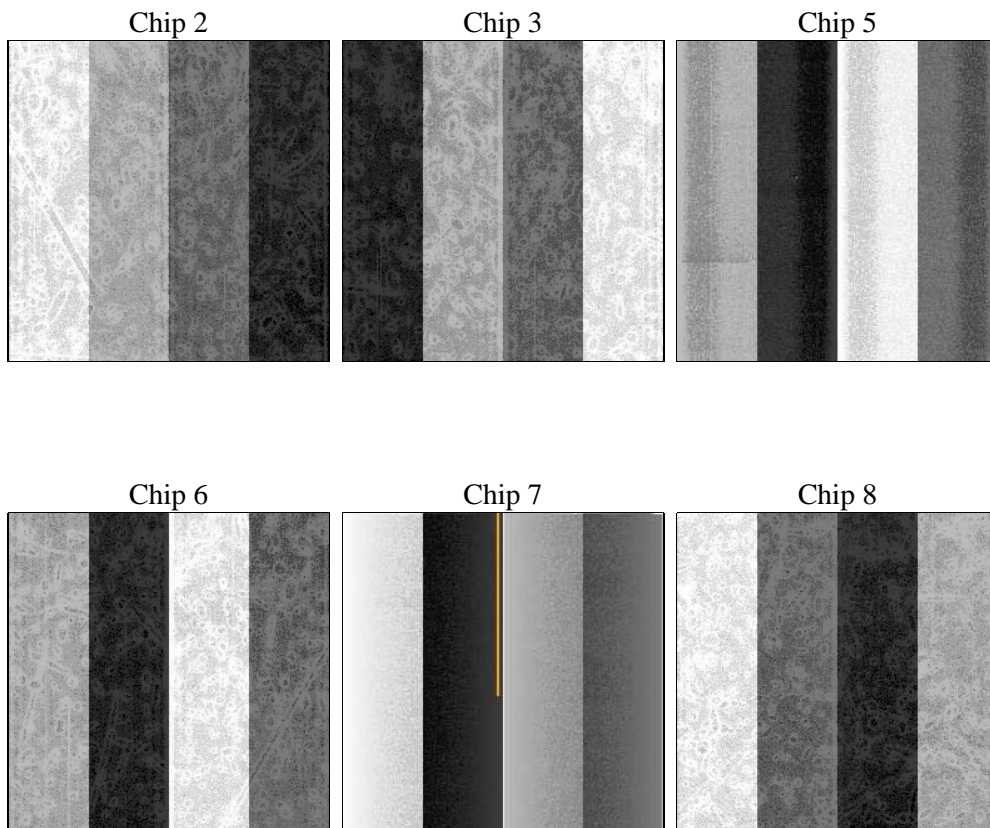
2 OBI

2.1 OBI

2.1.1 Images



2.1.2 Bias



2.1.3 Parameters

obi_num	0	Obi number	sched_exp_time	29000.000000	[s] Scheduled observation exposure time
ascdsver	8.4.5	Processing system revision	ontime	28913.888440683	Sum of GTIs [s]
caldbver	4.5.1.1	 	ontime2	28904.206599876	Sum of GTIs [s]
date	2012-09-17T01:14:09	Date and time of file creation	ontime3	28910.524380371	Sum of GTIs [s]
revision	3	Processing version of data	ontime5	28904.124480054	Sum of GTIs [s]
			ontime6	28907.324450135	Sum of GTIs [s]
			ontime7	28913.888440683	Sum of GTIs [s]
			ontime8	28913.724280685	Sum of GTIs [s]
			l1events	1236550	Number of level 1 events

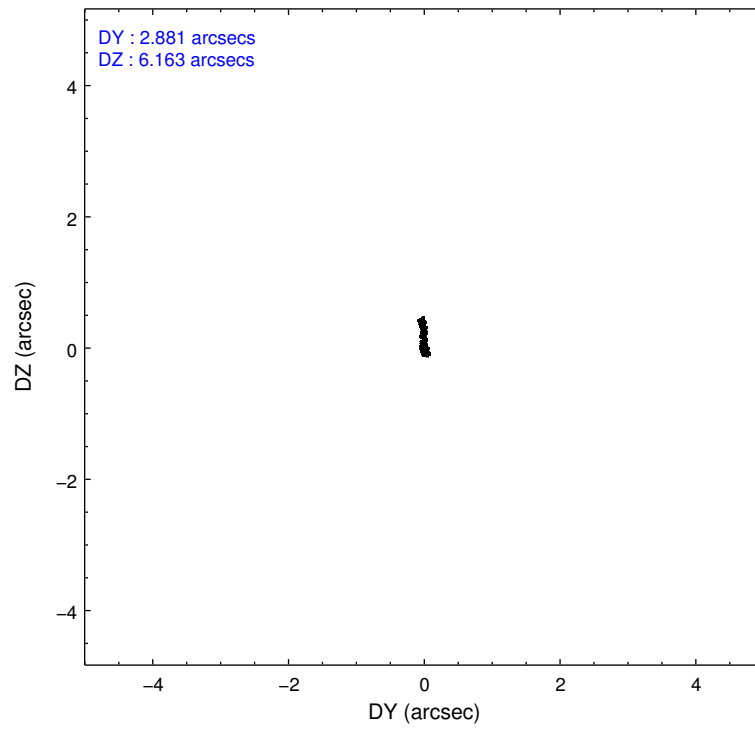
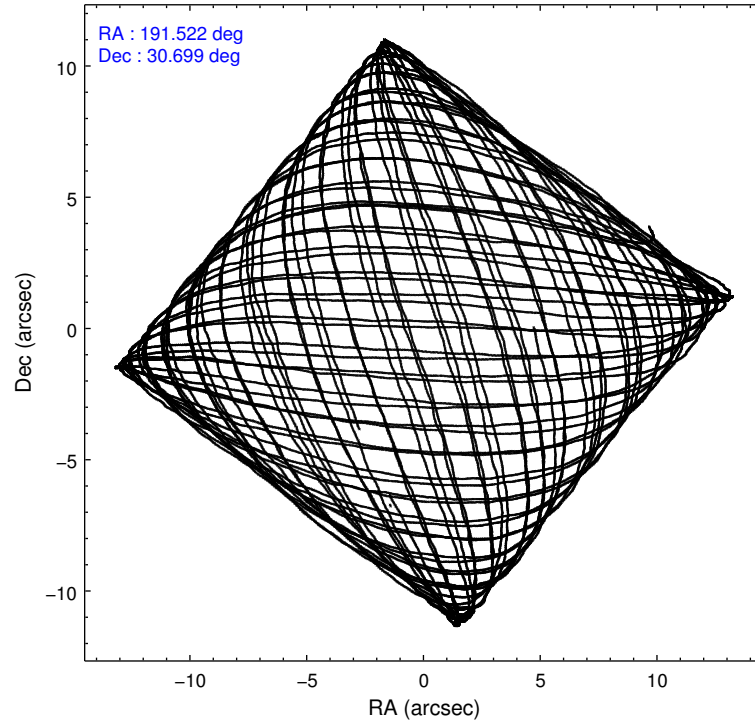
2.1.4 Events

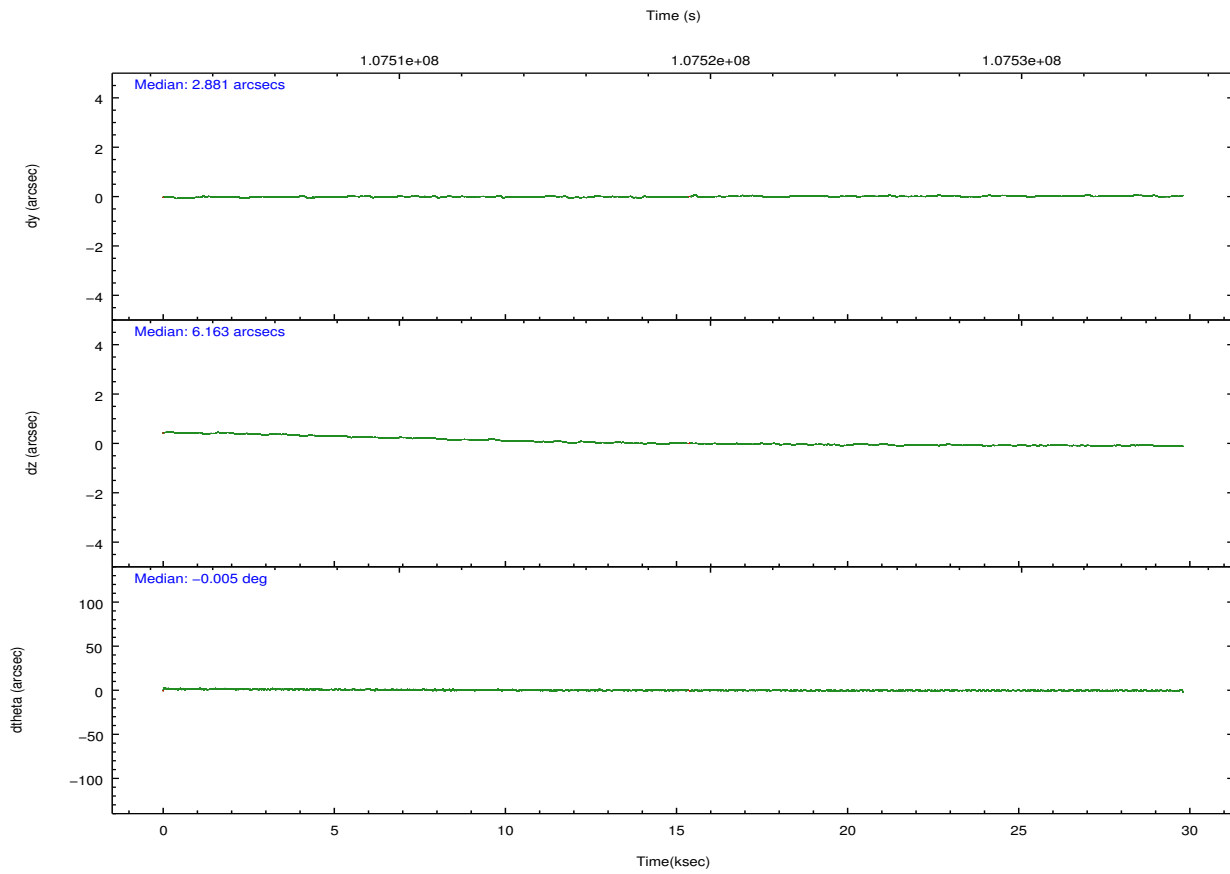
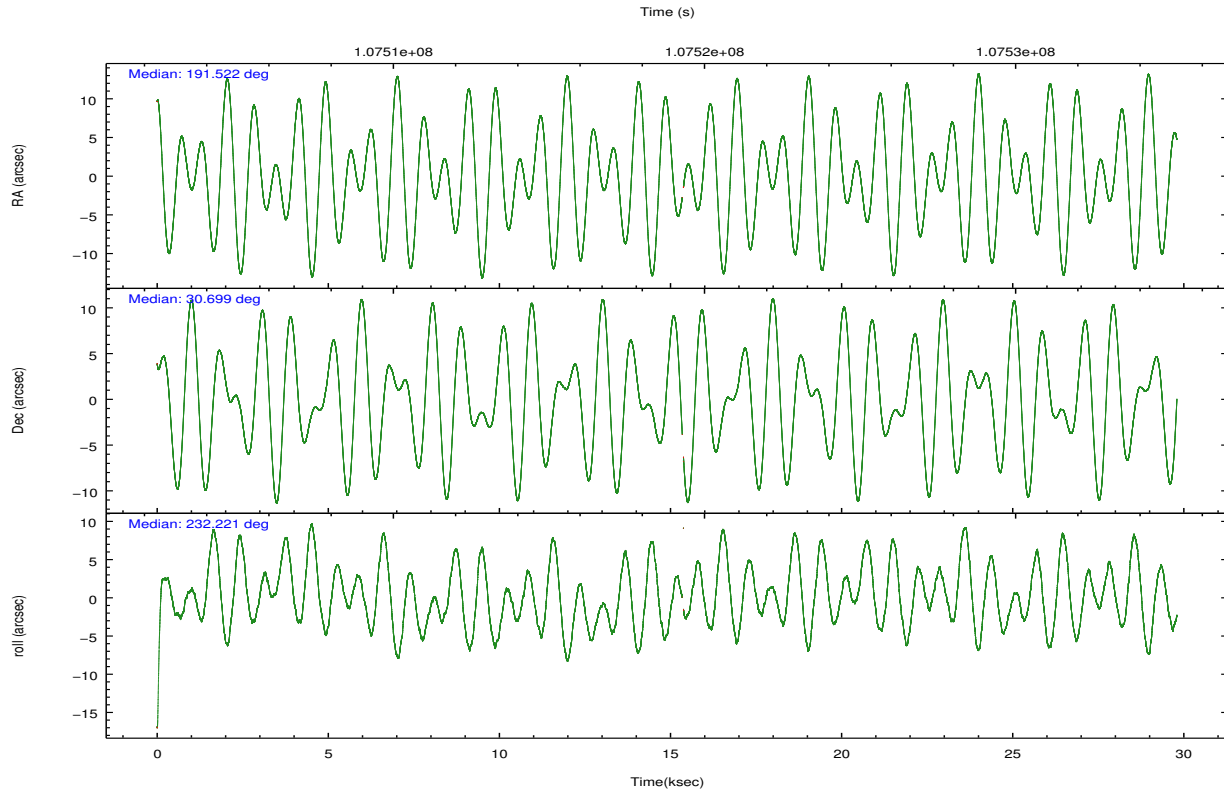
	ccd 2	ccd 3	ccd 5	ccd 6	ccd 7	ccd 8		ccd 2	ccd 3	ccd 5	ccd 6	ccd 7	ccd 8
level 1 events	177103	172380	264795	175553	225780	220939	grade 0 events	8243	8527	22386	8757	9224	13626
rejected events	157430	152472	139732	154468	132306	177521		4%	4%	8%	4%	4%	6%
rejected %	88%	88%	52%	87%	58%	80%	grade 1 events	72	76	352	94	197	100
								0%	0%	0%	0%	0%	0%
							grade 2 events	4330	4005	34370	4141	18244	9216
								2%	2%	12%	2%	8%	4%
							grade 3 events	1814	1939	5111	2095	8482	4767
								1%	1%	1%	1%	3%	2%
							grade 4 events	1858	1911	4630	2012	8583	4441
								1%	1%	1%	1%	3%	2%
							grade 5 events	6158	6659	20612	7412	21771	9496
								3%	3%	7%	4%	9%	4%
							grade 6 events	3454	3553	58778	4118	49101	11405
								1%	2%	22%	2%	21%	5%
							grade 7 events	151174	145710	118556	146924	110178	167888
								85%	84%	44%	83%	48%	75%

2.2 Compared Parameters

Parameter	Planned	Actual	Parameter	Planned	Actual
Instrument	ACIS	ACIS	Obspar format version number	7	7
Detector	ACIS-235678	ACIS-235678	Obspar file type	PREDICTED	ACTUAL
Grating	NONE	NONE	Obspar update status	NONE	UPDATED
Data mode	FAINT	FAINT	Number of optional ACIS chips dropped	0	0
Observation mode	POINTING	POINTING	On-chip summing requested	N	N
[deg] Pointing RA	191.526453	191.5224625164065	Subarray requested	NONE	NONE
[deg] Pointing Dec	30.725535	30.69844858475229	Alternating exposures requested	N	N
[deg] Pointing Roll	232.064303	232.2229649141522	[s] Primary exposure time	0.000000	3.2
[mm] SIM focus pos	-0.684267	-0.6828225247311905			
[mm] SIM defocus	0	0.001444936568705701			
[mm] SIM translation stage pos	-190.132523	-190.1400660498719			
[mm] SIM translation stage offset	0	0.00754346686406393			
[s] Observation start time (MET)	107504694.184000	107503432.10887			
Observation start date	2001-05-29T06:23:50	2001-05-29T06:03:52			
[s] Observation end time (MET)	107533694.184000	107534074.48506			
Observation end date	2001-05-29T14:27:10	2001-05-29T14:34:34			
Read mode	TIMED	TIMED			

2.3 Aspect



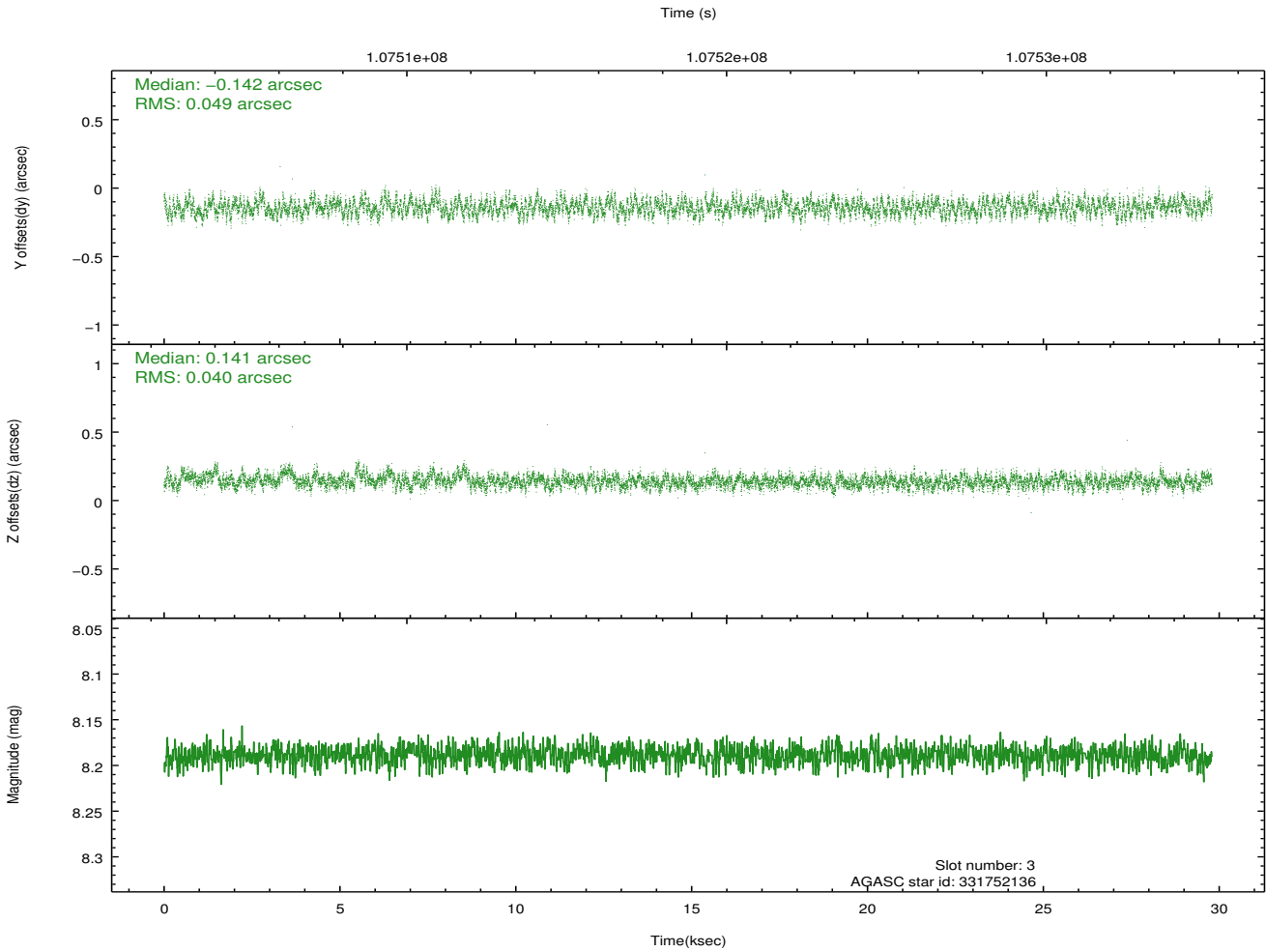
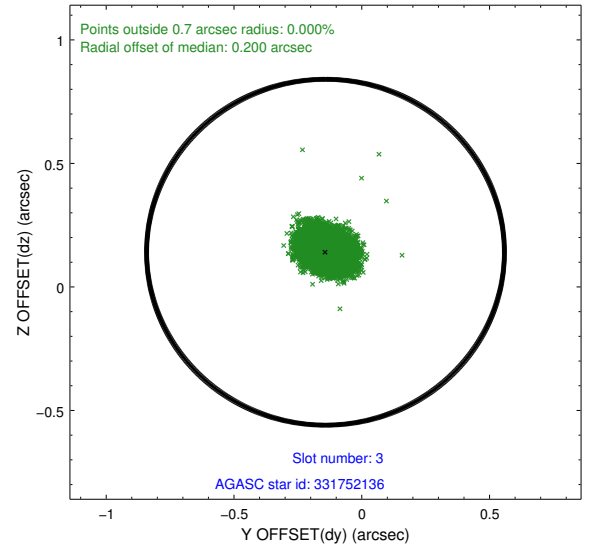
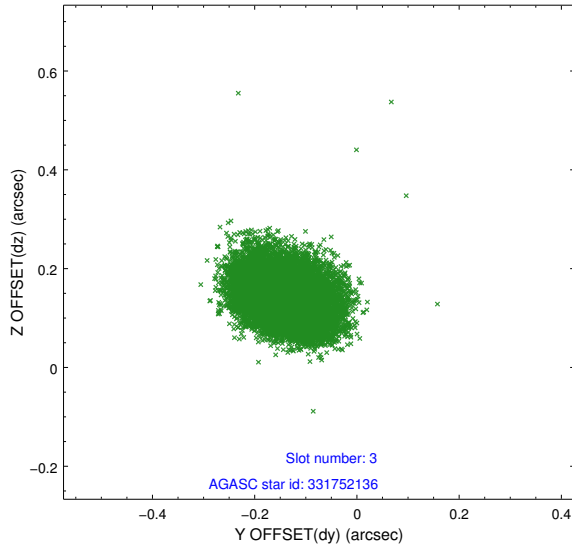


Slot Statistics

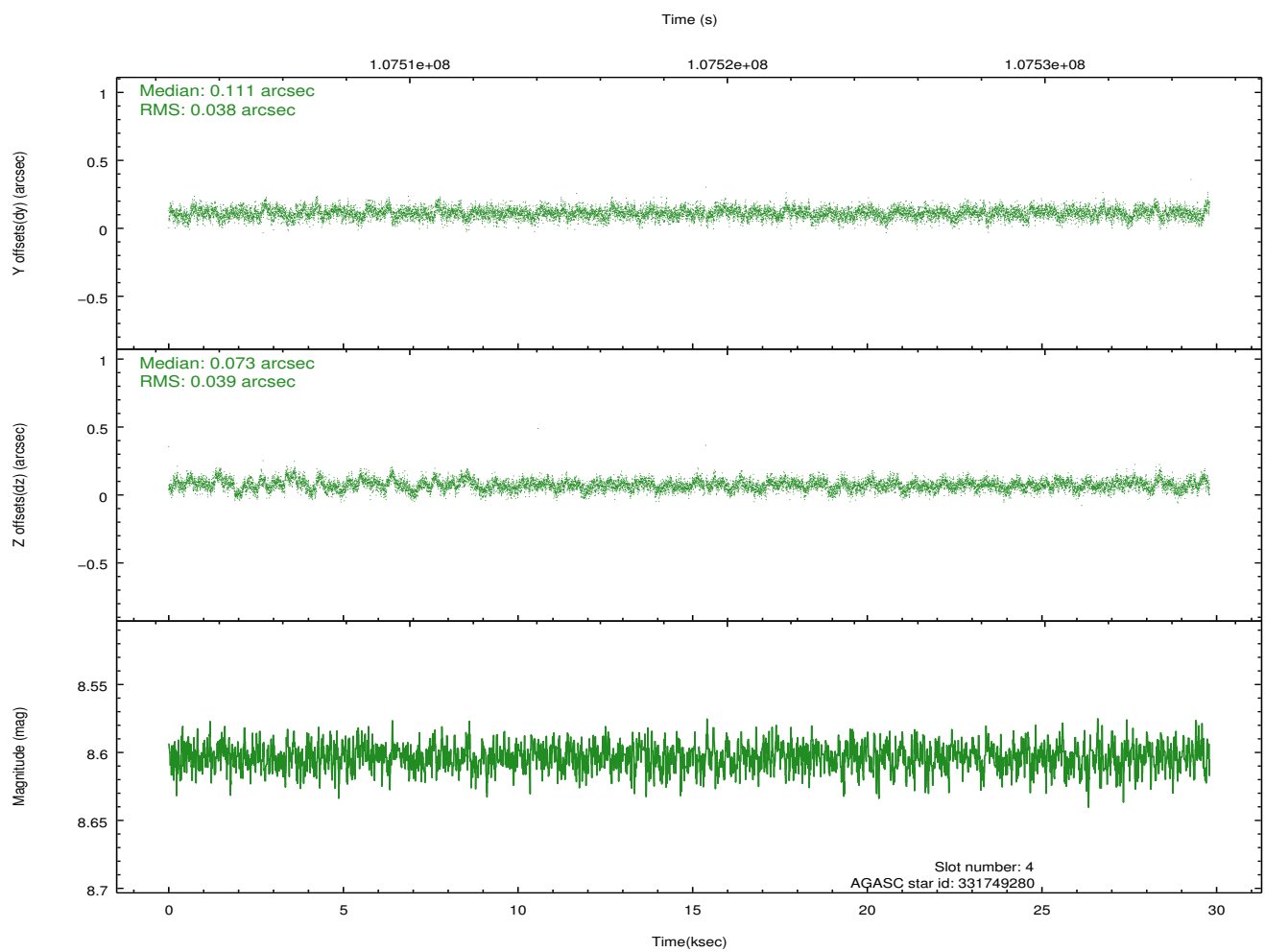
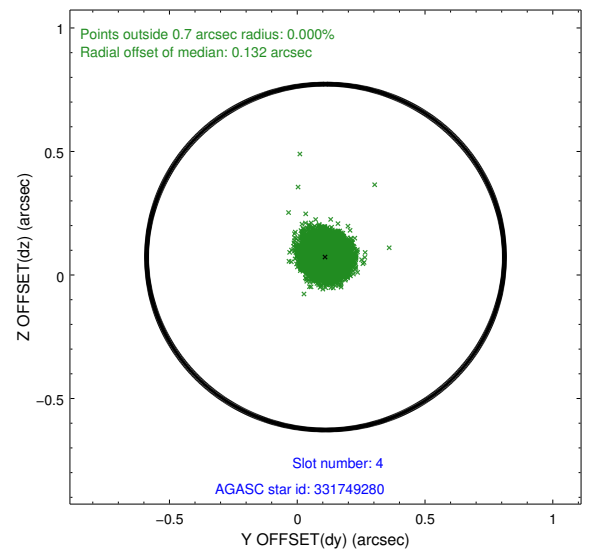
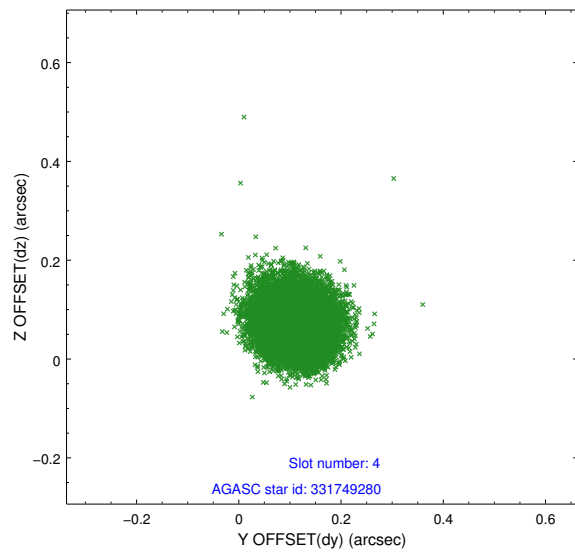
slot	status	id	mag	n_pts	med_dy	med_dz	dr1	dr2	ra	dec	mean_y	mean_z
0	FID	ACIS-S-2	7.11	7261	-0.022	0.015	0.008	0.012	0.000000	0.000000	-755.51	-1727.38
1	FID	ACIS-S-4	7.20	7259	-0.050	0.006	0.007	0.013	0.000000	0.000000	2157.67	181.07
2	FID	ACIS-S-5	7.24	7259	0.040	-0.012	0.006	0.011	0.000000	0.000000	-1808.23	174.74
3	GUIDE	331752136	8.19	14514	-0.142	0.141	0.068	0.109	192.091746	30.767179	-1196.70	1284.59
4	GUIDE	331749280	8.60	14519	0.111	0.073	0.058	0.095	191.374125	30.197857	1789.57	794.38
5	GUIDE	331748496	9.37	14508	-0.102	0.005	0.077	0.127	191.833821	31.213608	-1968.14	-334.07
6	GUIDE	331748904	9.62	14514	0.054	-0.099	0.112	0.180	190.841572	30.797941	1091.75	-1834.13
7	GUIDE	331752784	10.04	14510	0.080	-0.107	0.127	0.260	191.648549	30.702093	-165.61	349.90

2.4 Star Slots

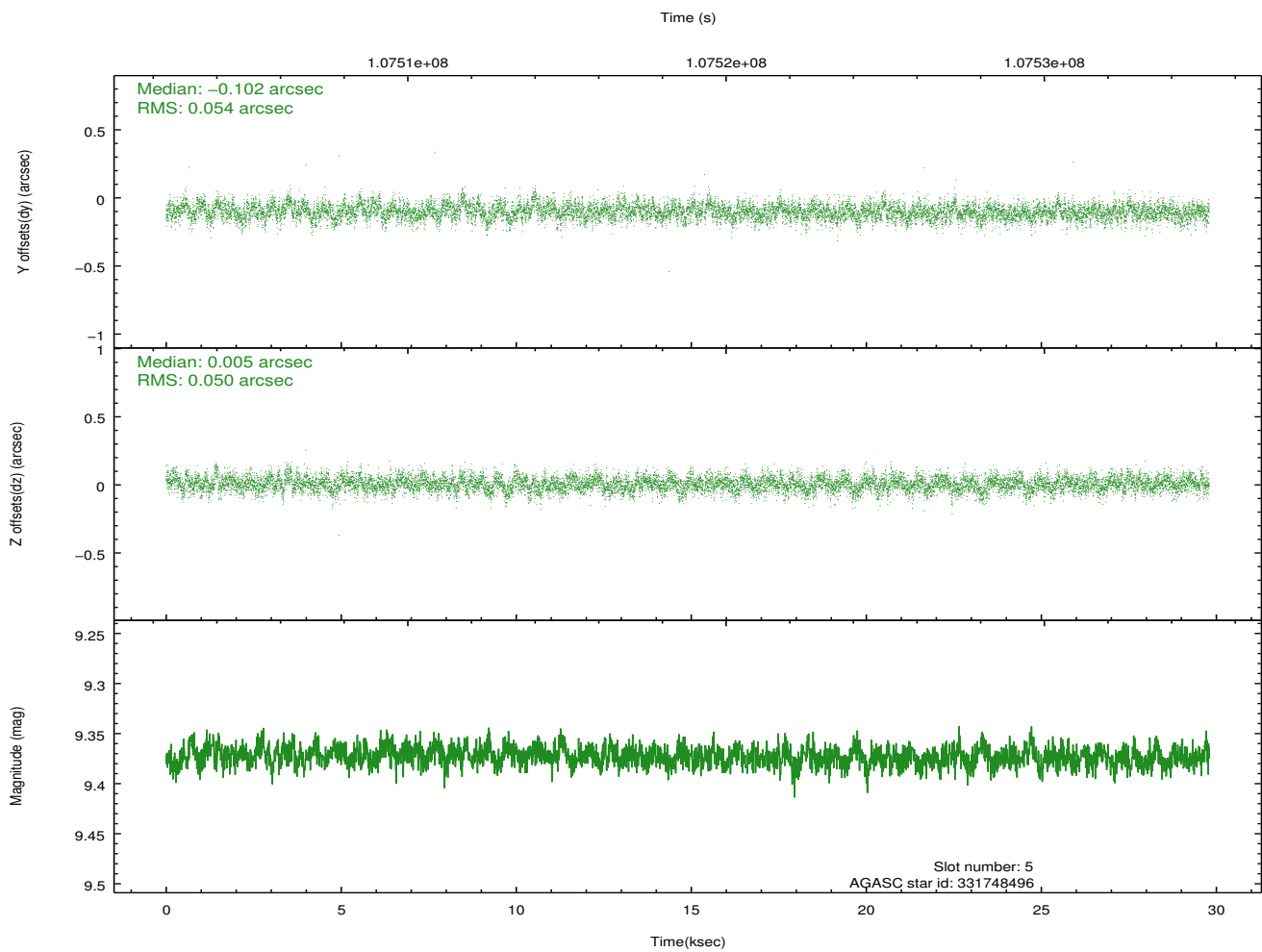
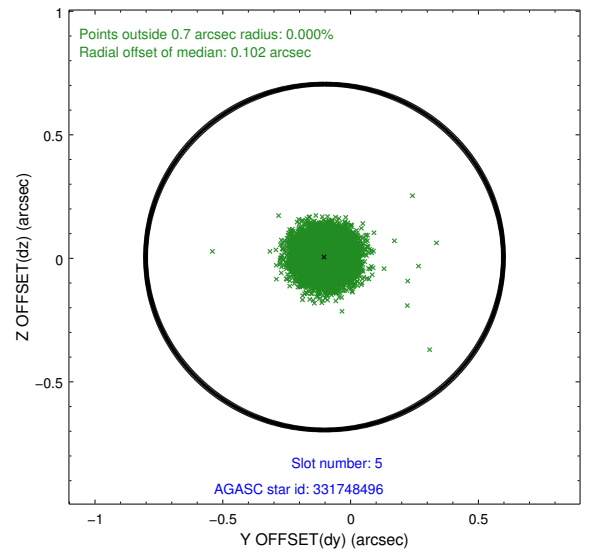
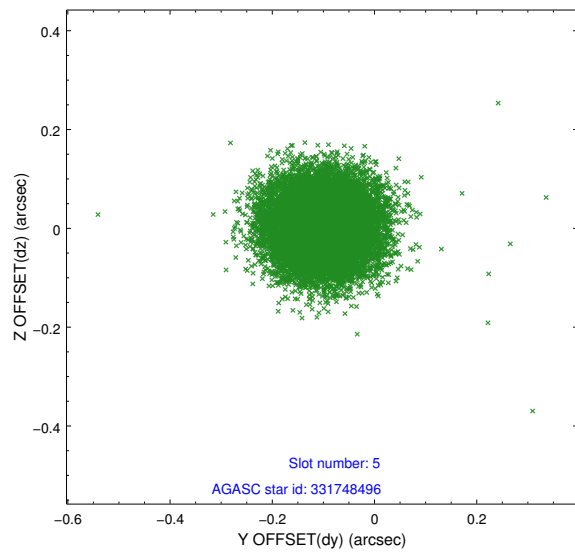
2.4.1 Slot 3



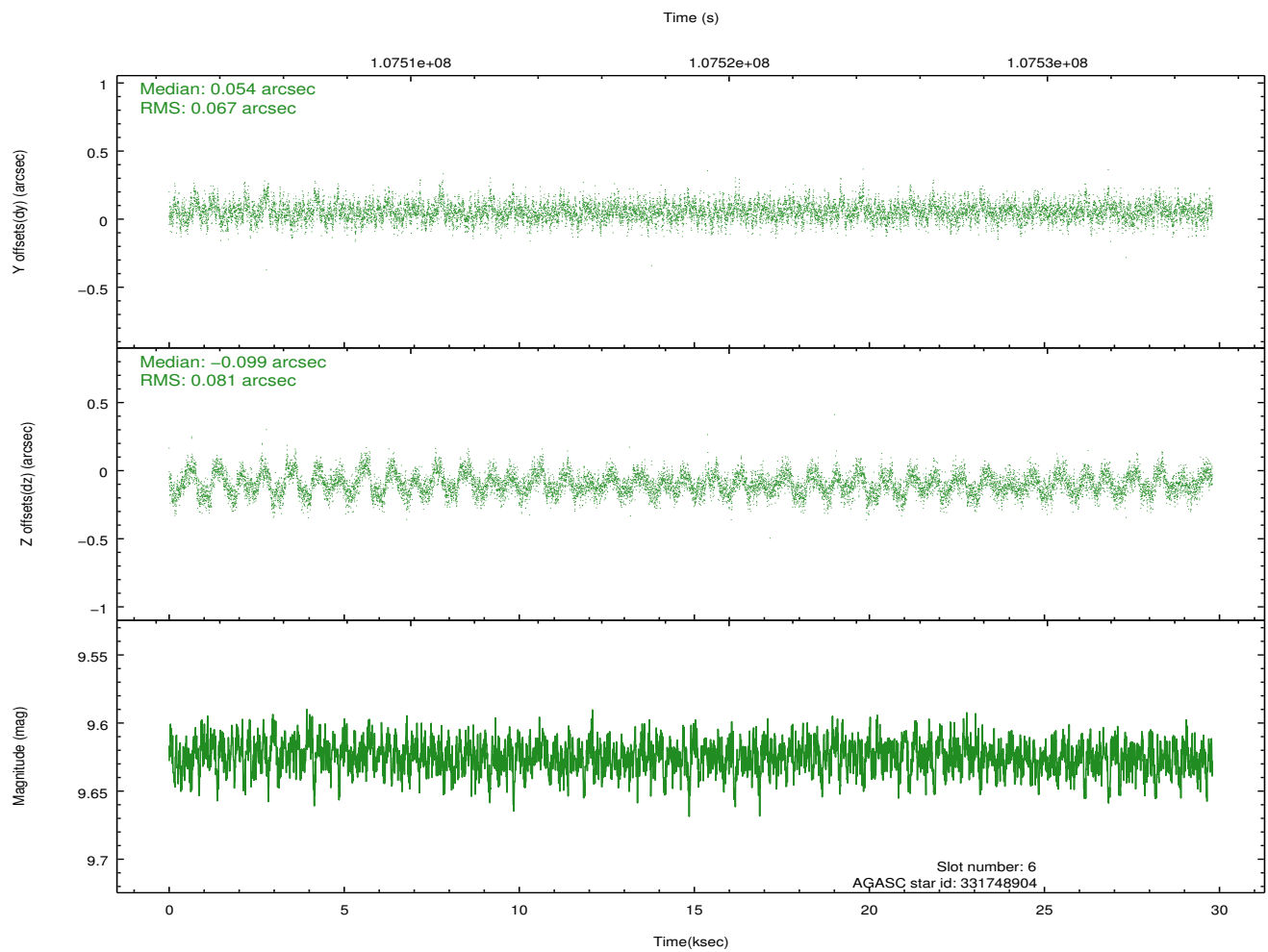
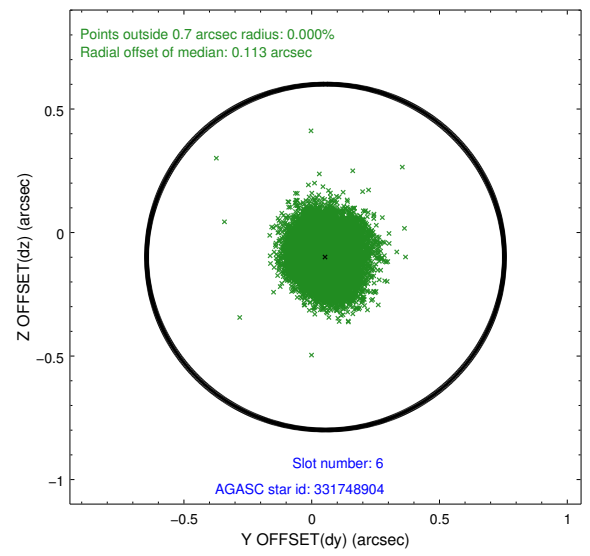
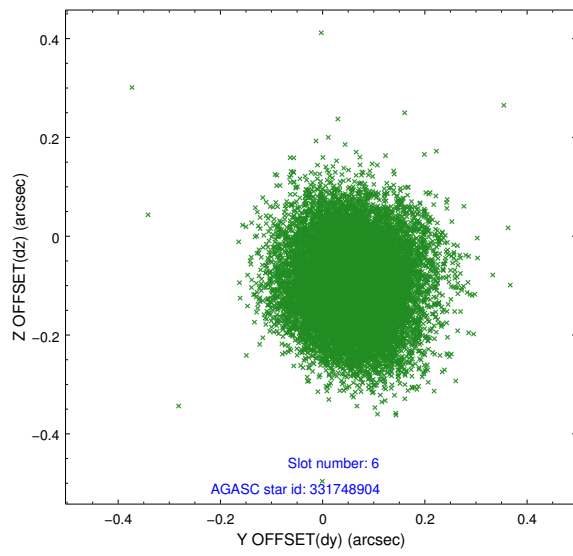
2.4.2 Slot 4



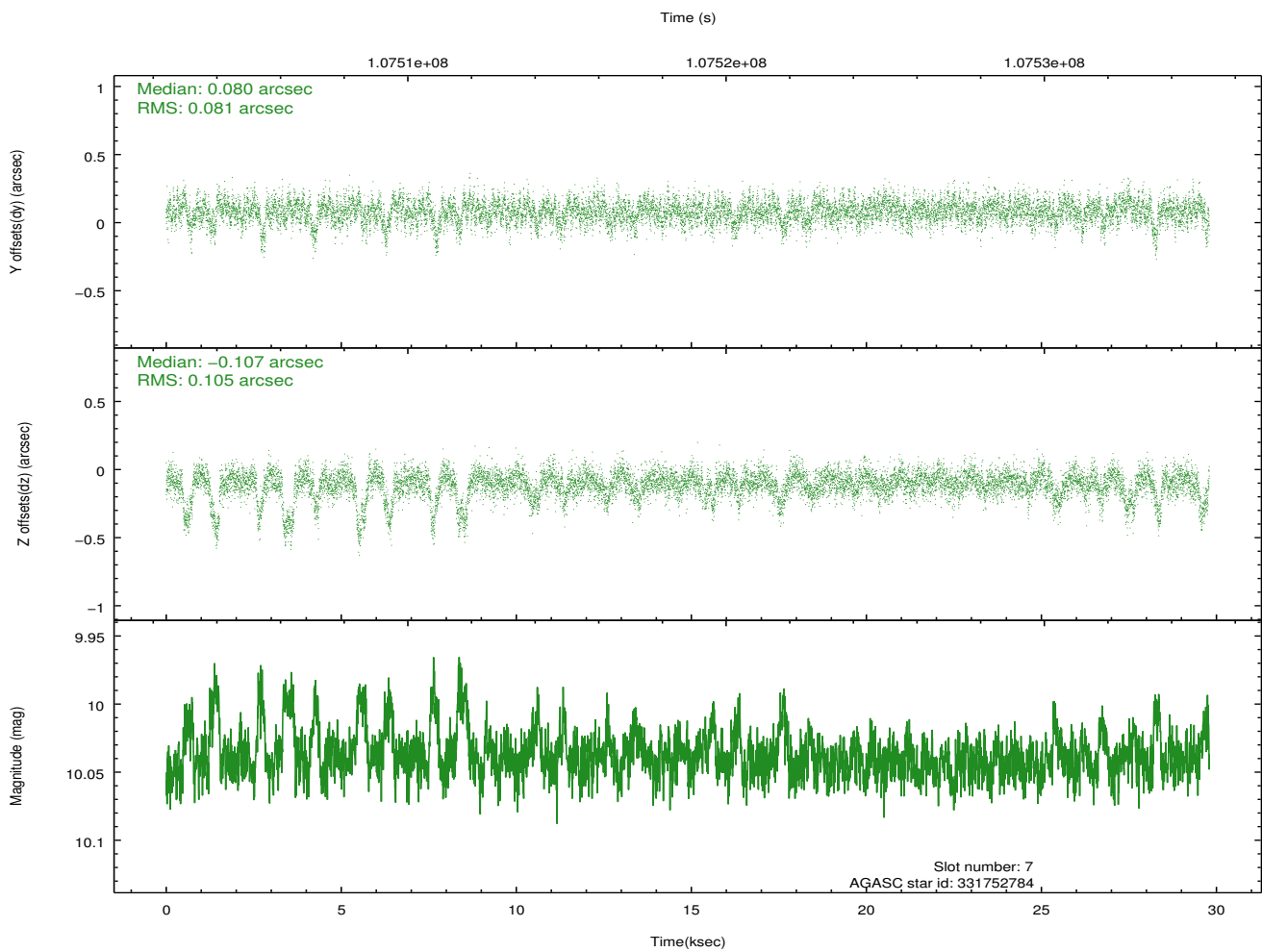
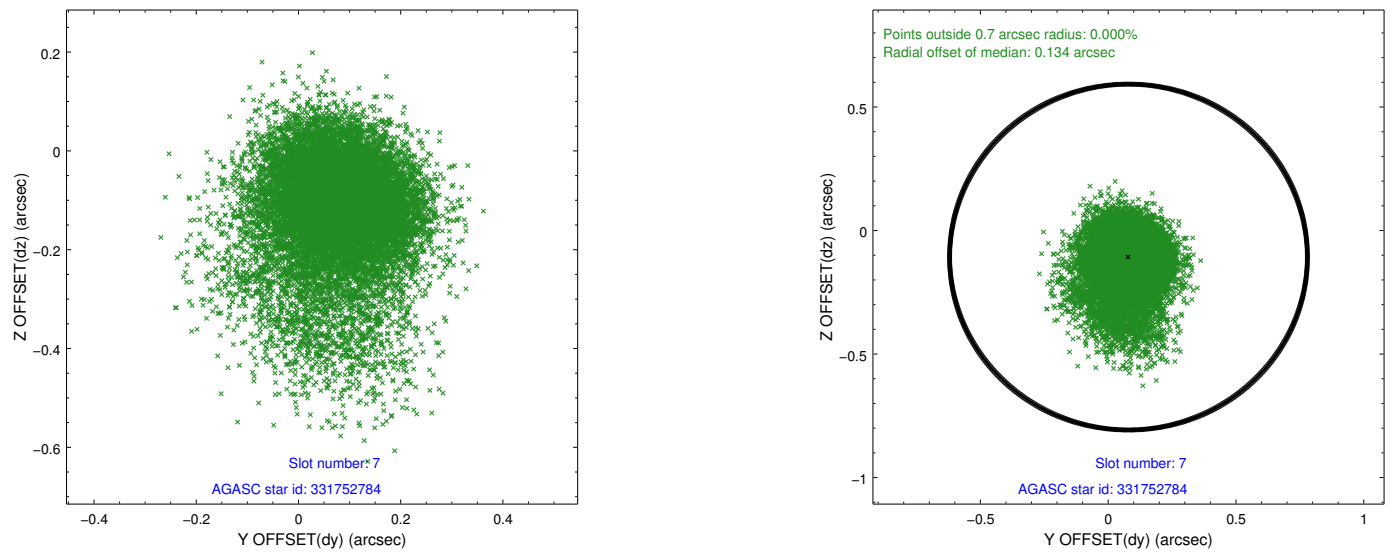
2.4.3 Slot 5



2.4.4 Slot 6

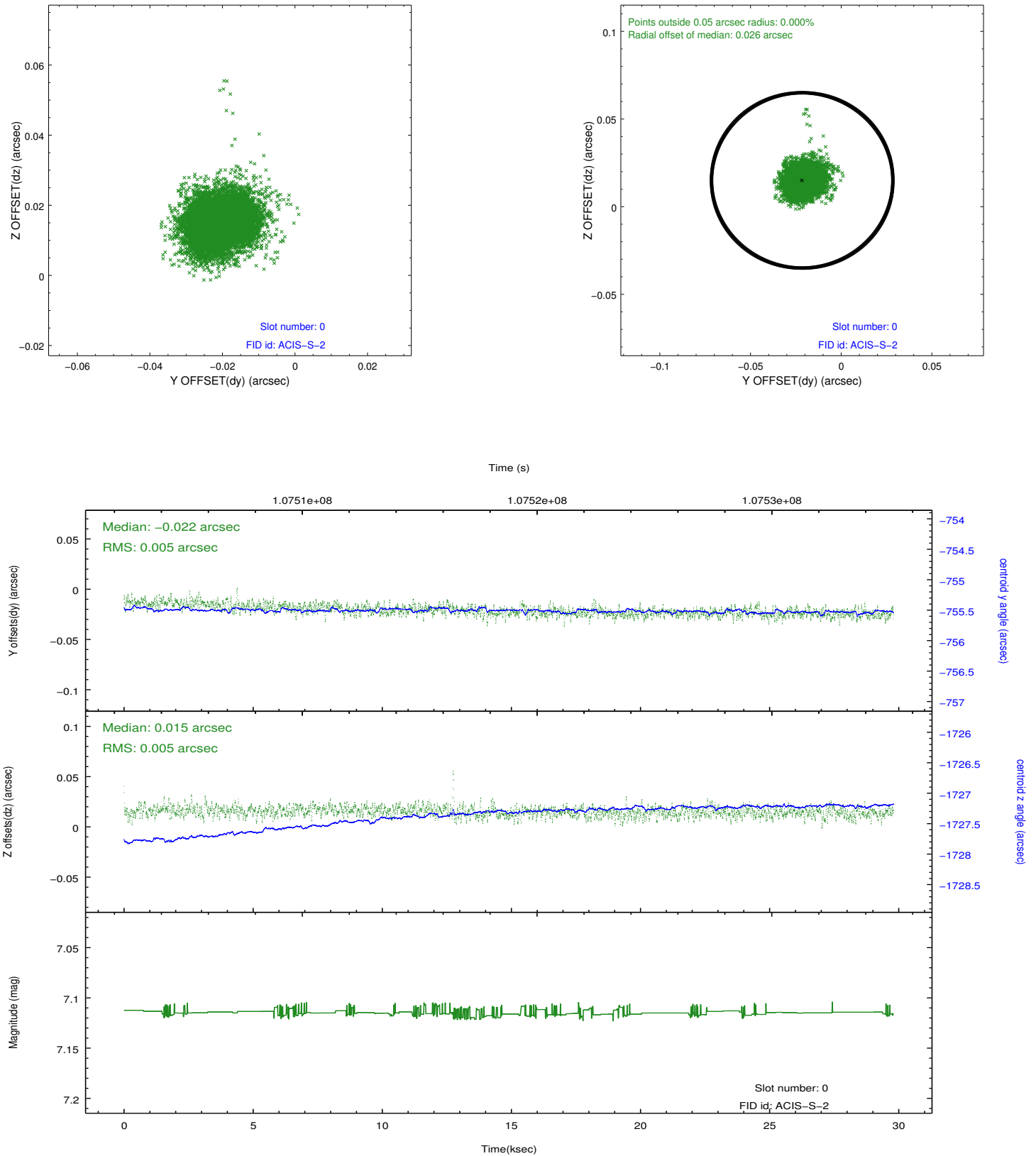


2.4.5 Slot 7

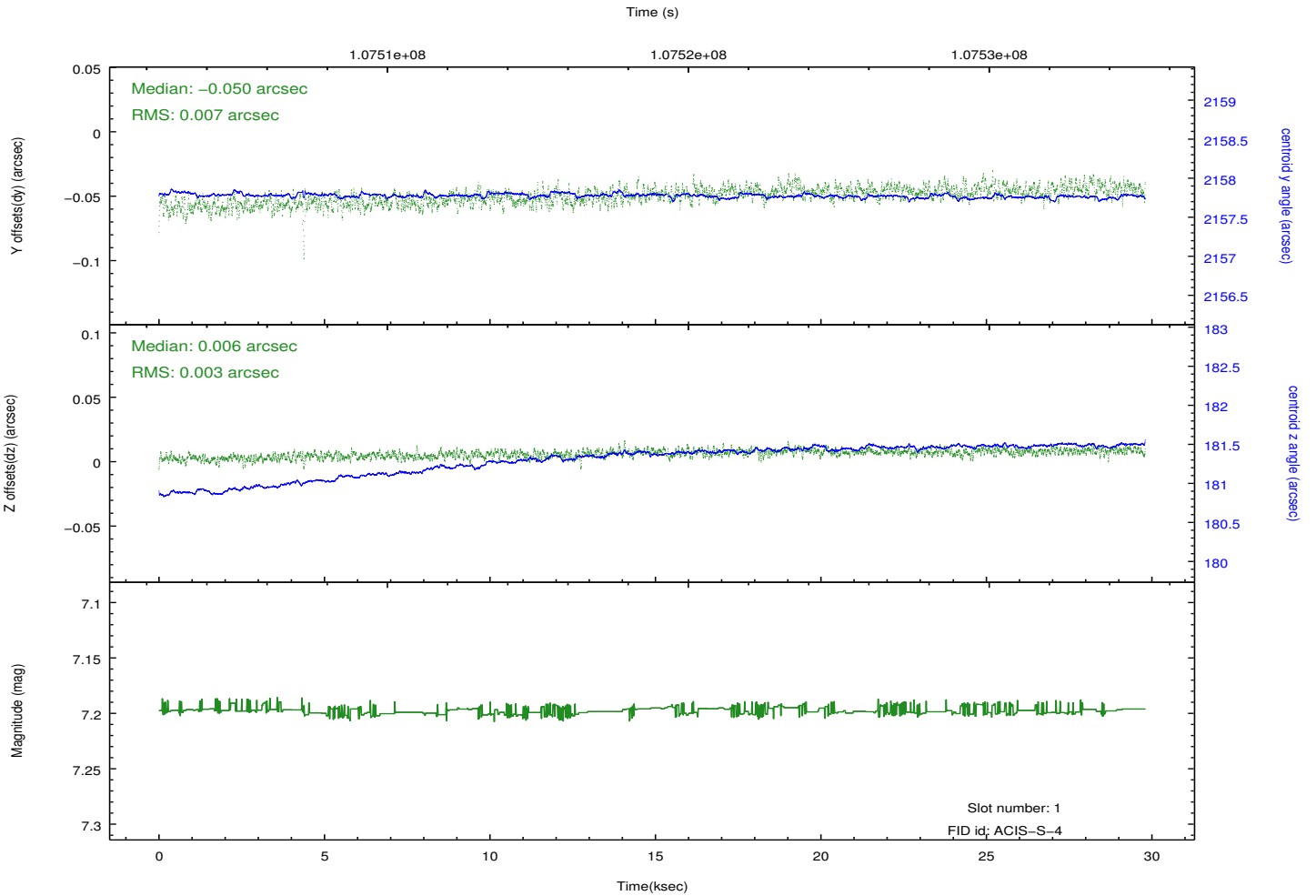
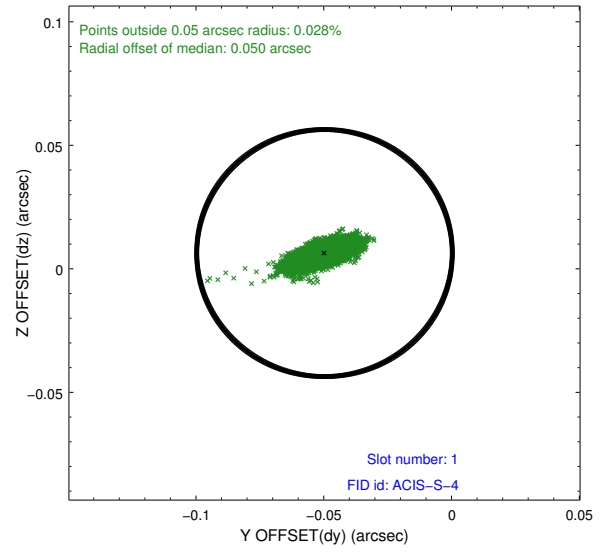
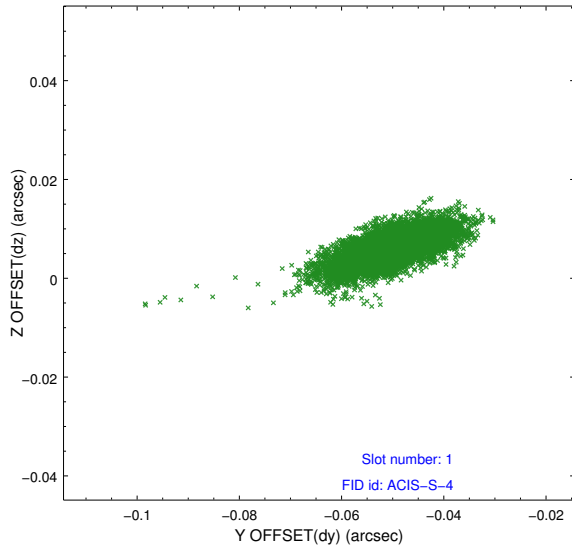


2.5 FID Slots

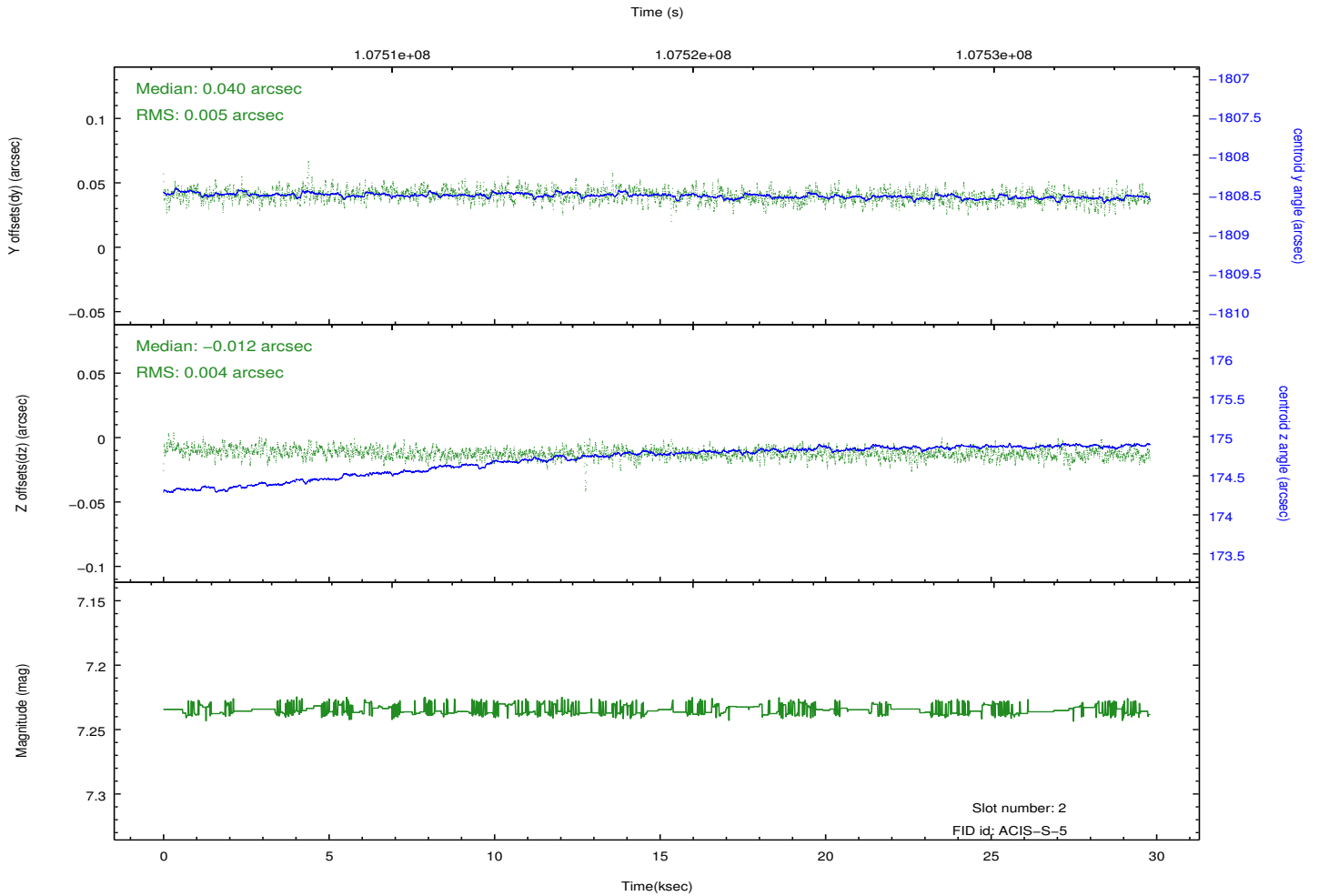
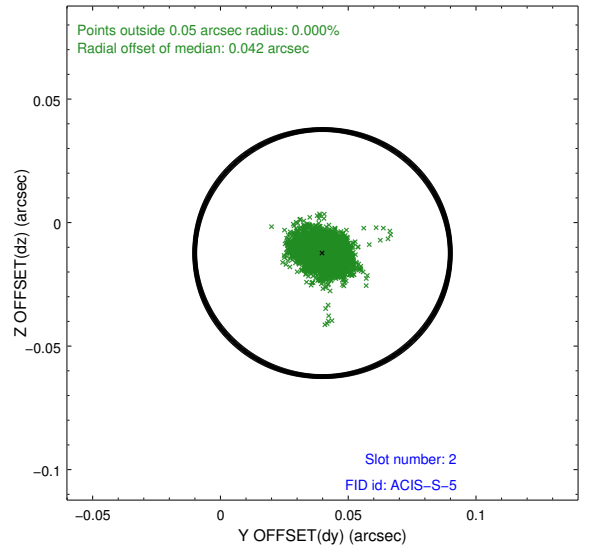
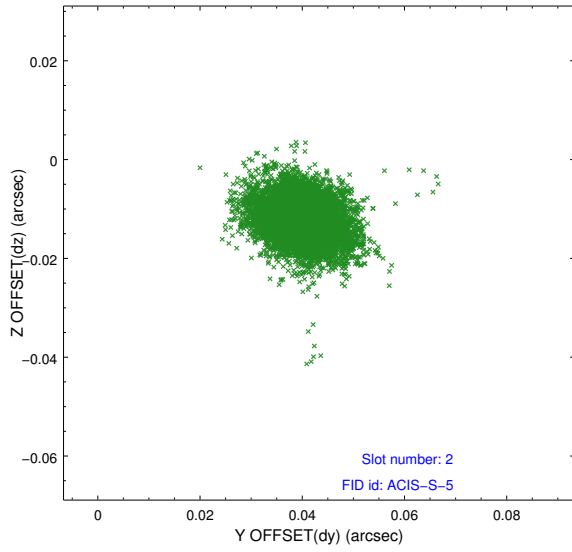
2.5.1 Slot 0



2.5.2 Slot 1



2.5.3 Slot 2



A Summary

A.1 Status

V&V Scientist	Jen Lauer
V&V Date (YYYY-MM-DD)	2012.09.19
V&V Edition	1
V&V Disposition and Status	OK
V&V Charge Time	28.912

A.2 Comments