

V&V Reference Report

L2 ASCDS Version : 8.4.5

Observation 2073 - L2 Version 3
Chandra X-Ray Center

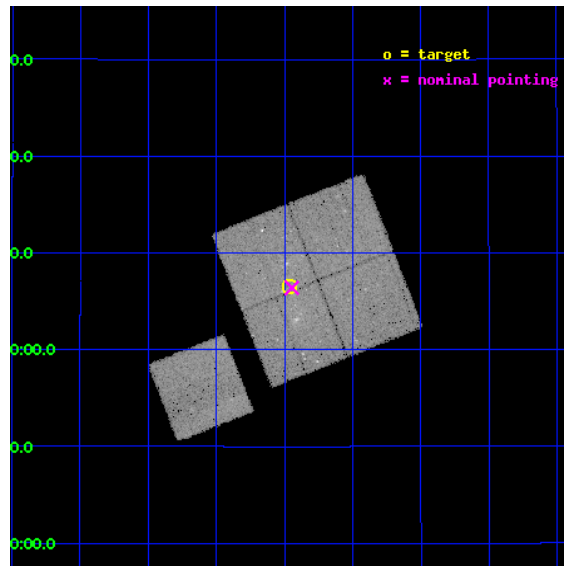
L2 Processing Date : Sep 17 2012

Contents

1	Front	2
2	OBI	3
2.1	OBI	3
2.1.1	Images	3
2.1.2	Bias	3
2.1.3	Parameters	4
2.1.4	Events	4
2.2	Compared Parameters	5
2.3	Aspect	6
2.4	Star Slots	9
2.4.1	Slot 3	9
2.4.2	Slot 4	10
2.4.3	Slot 5	11
2.4.4	Slot 6	12
2.4.5	Slot 7	13
2.5	FID Slots	14
2.5.1	Slot 0	14
2.5.2	Slot 1	15
2.5.3	Slot 2	16
A	Summary	17
A.1	Status	17
A.2	Comments	17

1 Front

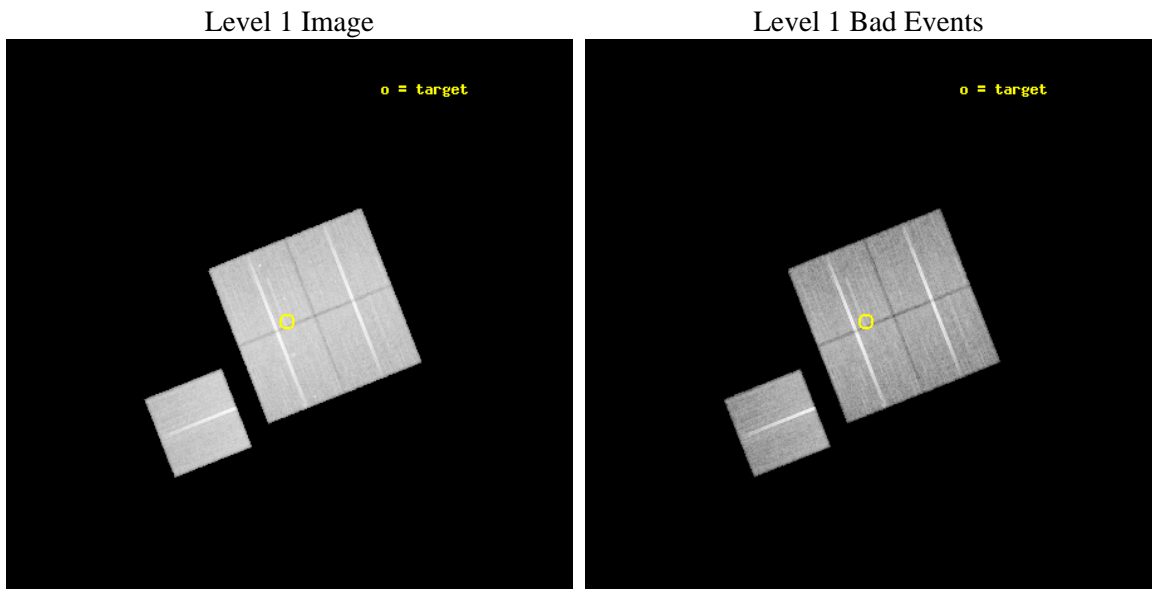
seq_num	600207	Sequence number
obs_id	2073	Observation id
title	IN SEARCH OF ``NORMAL" ELLIPTICAL GALAXIES	Proposal title
observer	Dr. william forman	Principal investigator
object	NGC 3607/NGC 3608	Source name
dtycycle	0	
cycle	P	events from which exps? Prim/Second/Both
ra_targ	169.24	Observer's specified target RA [deg]
dec_targ	18.11	Observer's specified target Dec [deg]
ra_nom	169.23649517805	Nominal RA [deg]
dec_nom	18.10661487177	Nominal Dec [deg]
roll_nom	248.43257683179	Nominal Roll [deg]
revision	3	Processing version of data
ontime	39004.036104023	Sum of GTIs [s]
livetime	38494.419657971	Livetime [s]
ontime0	39007.155568346	Sum of GTIs [s]
ontime1	39013.458964735	Sum of GTIs [s]
ontime2	39000.895133778	Sum of GTIs [s]
ontime3	39004.036104023	Sum of GTIs [s]
ontime6	39000.832657695	Sum of GTIs [s]
l2events	129882	Number of level 2 events



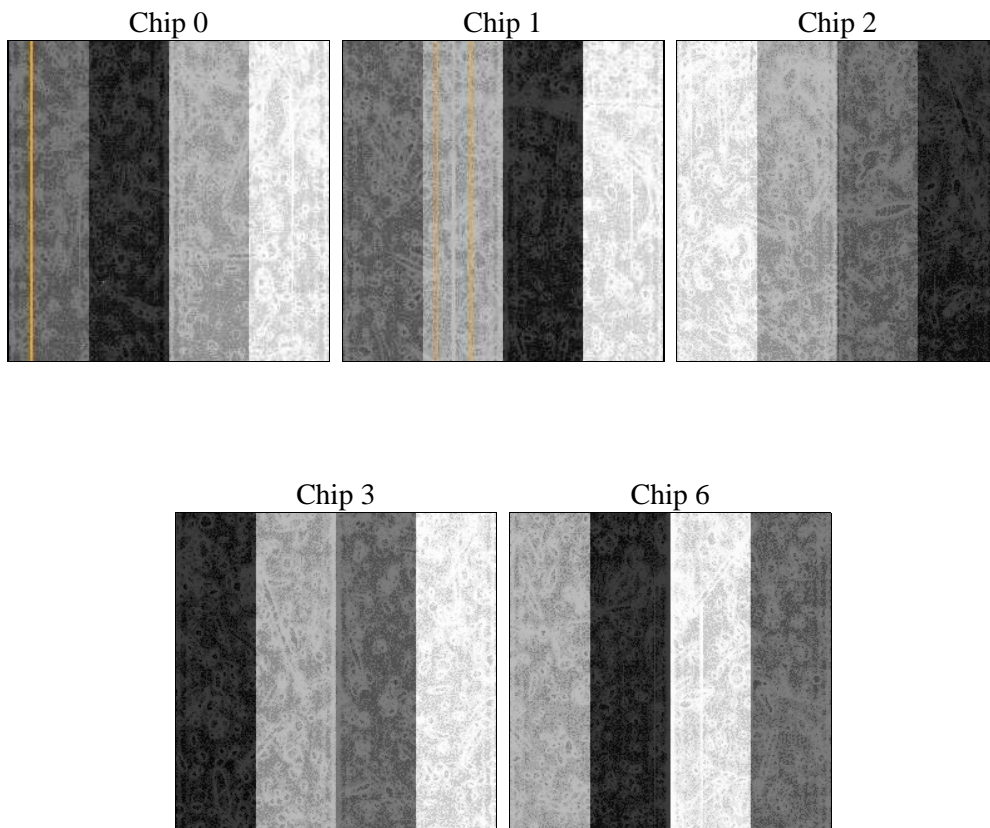
2 OBI

2.1 OBI

2.1.1 Images



2.1.2 Bias



2.1.3 Parameters

obi_num	0	Obi number	sched_exp_time	38886.043000	[s] Scheduled observation exposure time
ascdsver	8.4.5	Processing system revision	ontime	39004.036104023	Sum of GTIs [s]
caldbver	4.5.1.1	 	ontime0	39007.155568346	Sum of GTIs [s]
date	2012-09-17T20:08:42	Date and time of file creation	ontime1	39013.458964735	Sum of GTIs [s]
revision	3	Processing version of data	ontime2	39000.895133778	Sum of GTIs [s]
			ontime3	39004.036104023	Sum of GTIs [s]
			ontime6	39000.832657695	Sum of GTIs [s]
			l1events	1244183	Number of level 1 events

2.1.4 Events

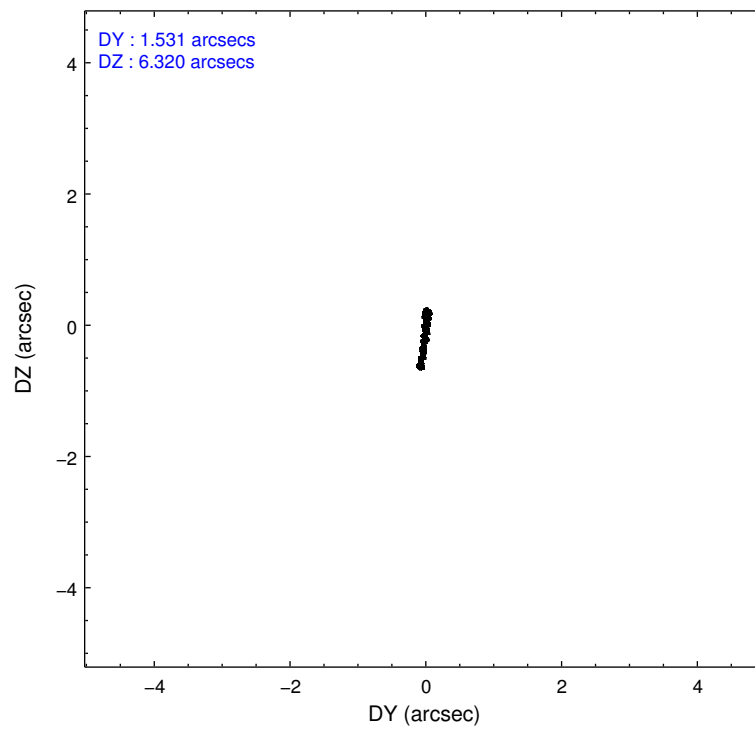
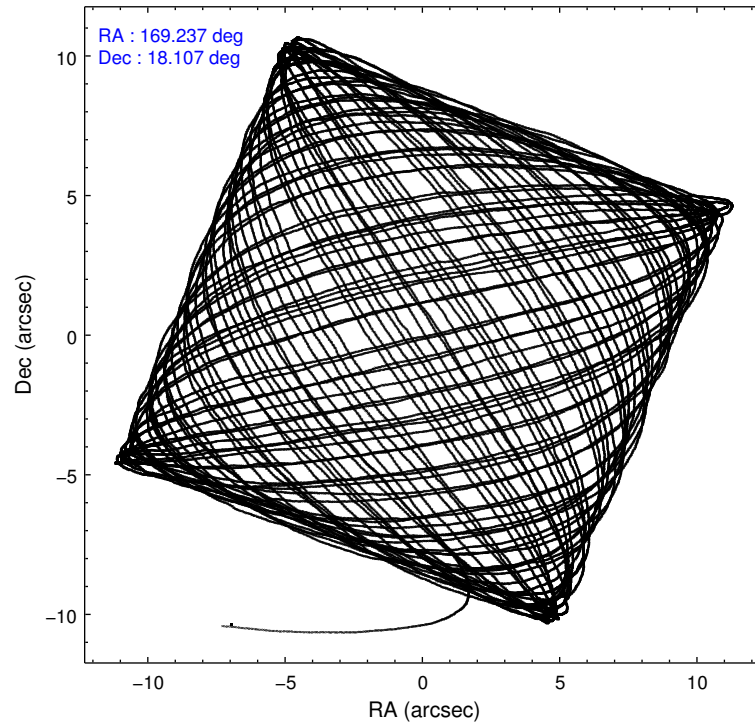
	ccd 0	ccd 1	ccd 2	ccd 3	ccd 6
level 1 events	235658	239222	260297	256970	252036
rejected events	206244	208388	227515	226363	224016
rejected %	87%	87%	87%	88%	88%

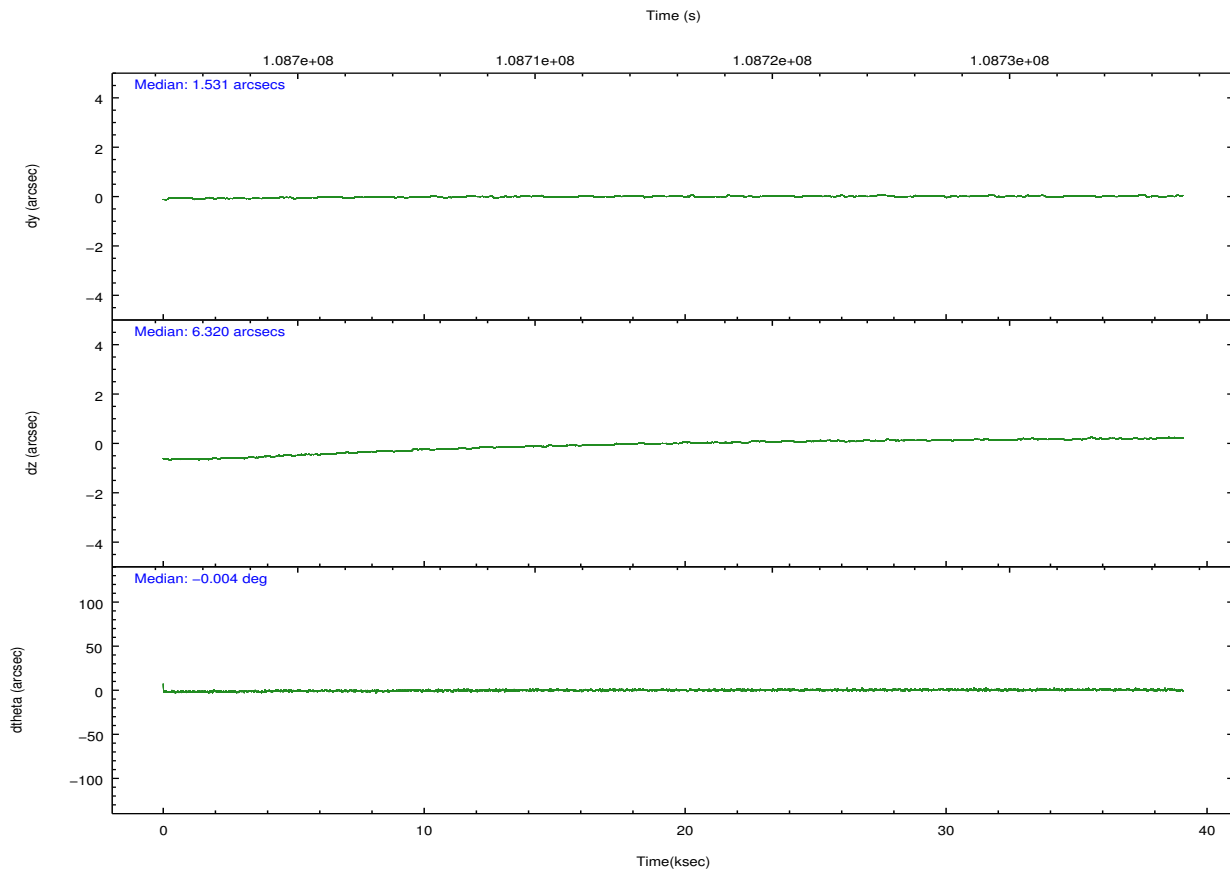
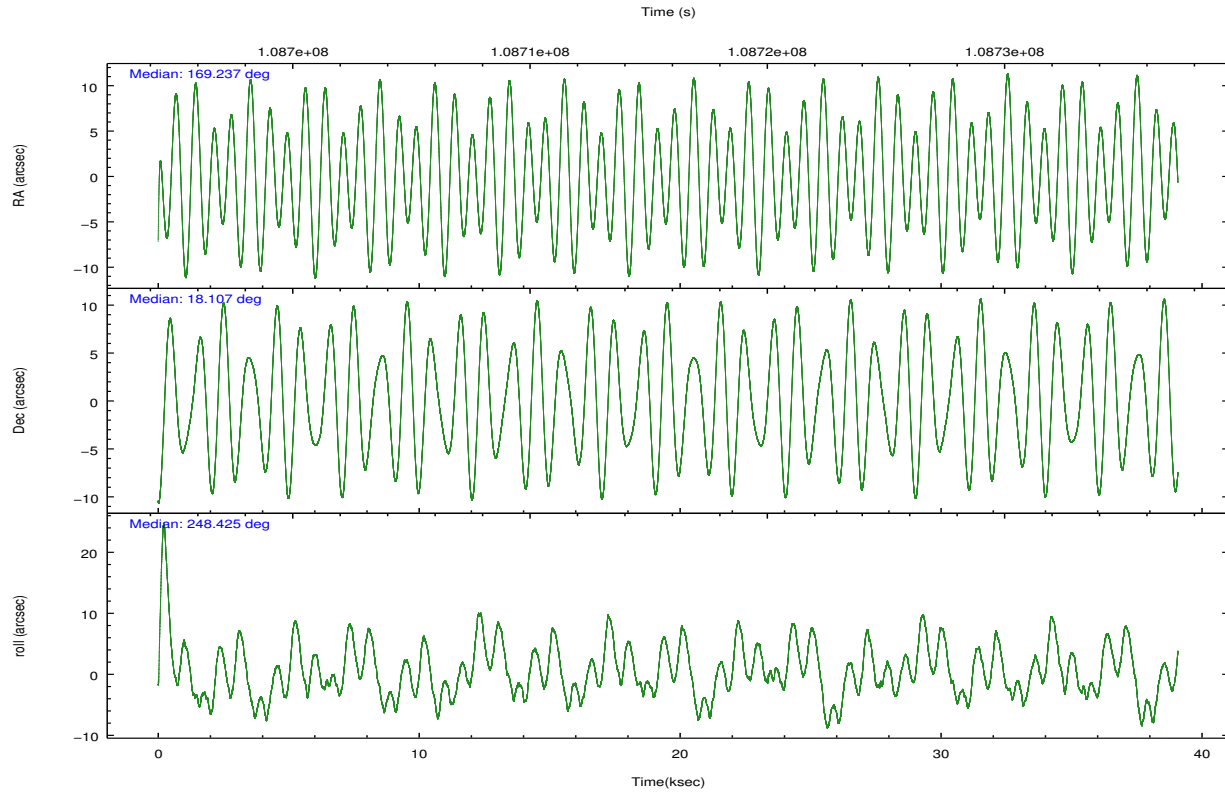
	ccd 0	ccd 1	ccd 2	ccd 3	ccd 6
grade 0 events	12603	12487	15966	13891	11037
	5%	5%	6%	5%	4%
grade 1 events	110	122	123	104	92
	0%	0%	0%	0%	0%
grade 2 events	6256	6229	6428	5889	5667
	2%	2%	2%	2%	2%
grade 3 events	2871	3233	2730	2800	2932
	1%	1%	1%	1%	1%
grade 4 events	2661	3250	2689	2802	2795
	1%	1%	1%	1%	1%
grade 5 events	9154	9896	8685	9697	10434
	3%	4%	3%	3%	4%
grade 6 events	5025	5636	4969	5227	5591
	2%	2%	1%	2%	2%
grade 7 events	196978	198369	218707	216560	213488
	83%	82%	84%	84%	84%

2.2 Compared Parameters

Parameter	Planned	Actual	Parameter	Planned	Actual
Instrument	ACIS	ACIS	Obspar format version number	7	7
Detector	ACIS-01236	ACIS-01236	Obspar file type	PREDICTED	ACTUAL
Grating	NONE	NONE	Obspar update status	NONE	UPDATED
Data mode	VFAINT	VFAINT	Number of optional ACIS chips dropped	0	0
Observation mode	POINTING	POINTING	On-chip summing requested	N	N
[deg] Pointing RA	169.232238	169.2364951780542	Subarray requested	NONE	NONE
[deg] Pointing Dec	18.133761	18.10661487176988	Alternating exposures requested	N	N
[deg] Pointing Roll	248.225219	248.4325768317935	[s] Primary exposure time	0.000000	3.1
[mm] SIM focus pos	-0.782348	-0.7809083437167272			
[mm] SIM defocus	0	0.001439871863259334			
[mm] SIM translation stage pos	-227.092463	-227.0904437215976			
[mm] SIM translation stage offset	-6.5	-6.50200928133205			
[s] Observation start time (MET)	108696471.184000	108695499.4678			
Observation start date	2001-06-12T01:26:47	2001-06-12T01:11:39			
[s] Observation end time (MET)	108735357.184000	108735671.26937			
Observation end date	2001-06-12T12:14:53	2001-06-12T12:21:11			
Read mode	TIMED	TIMED			

2.3 Aspect



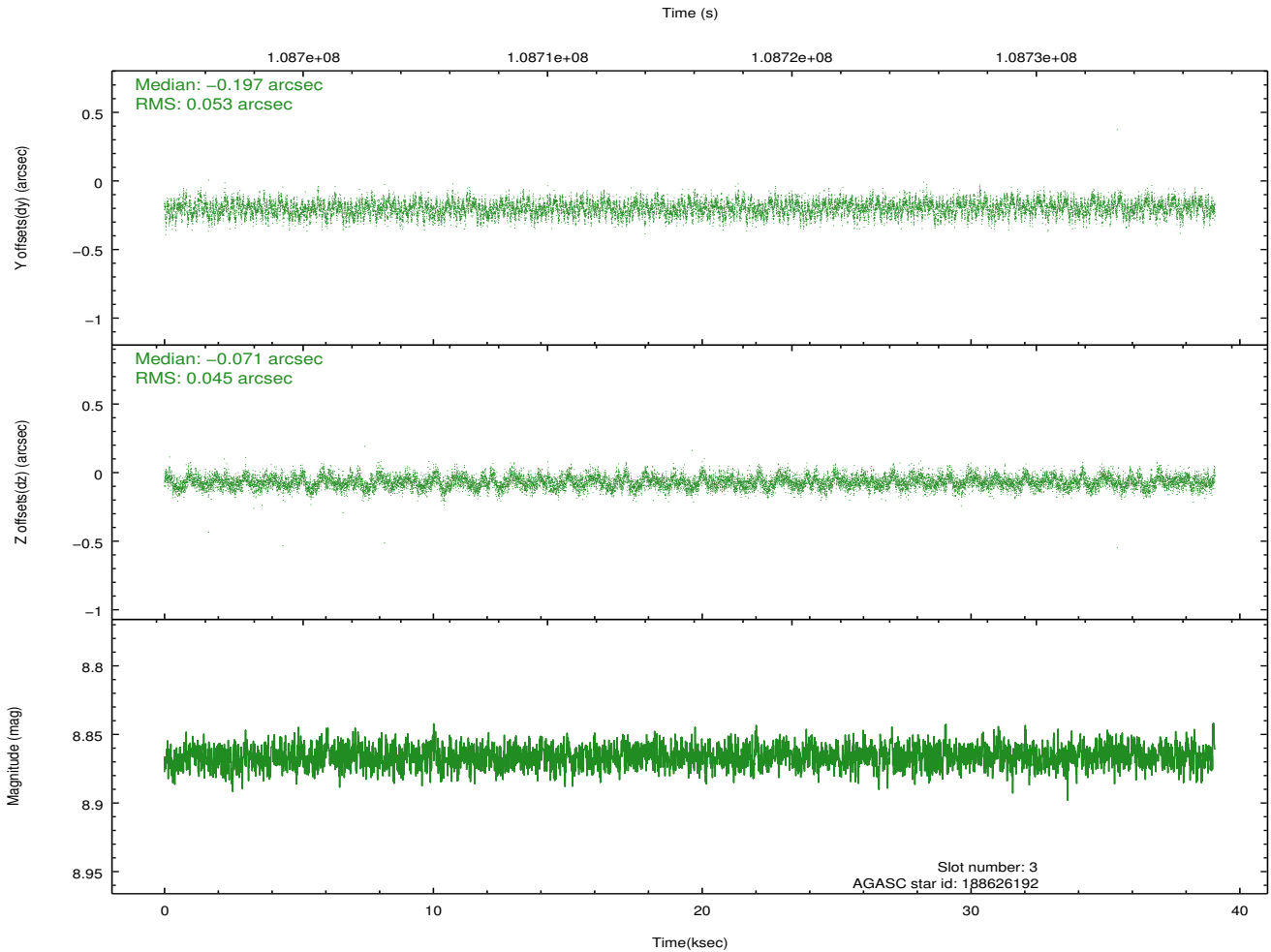
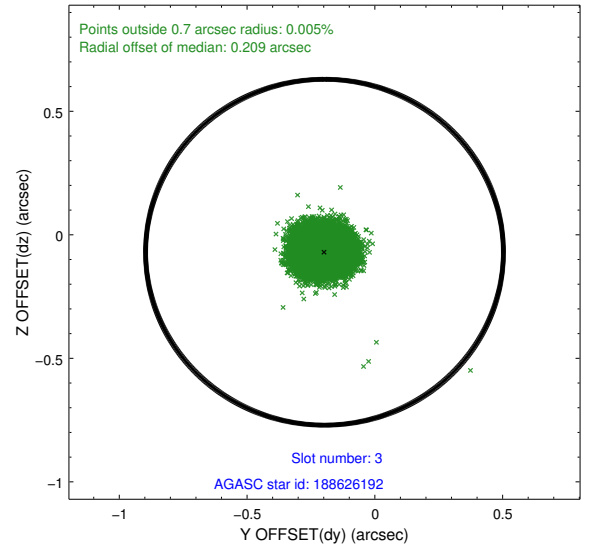
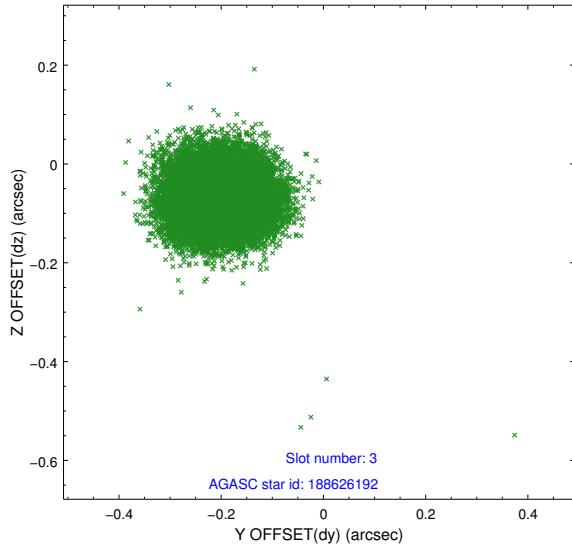


Slot Statistics

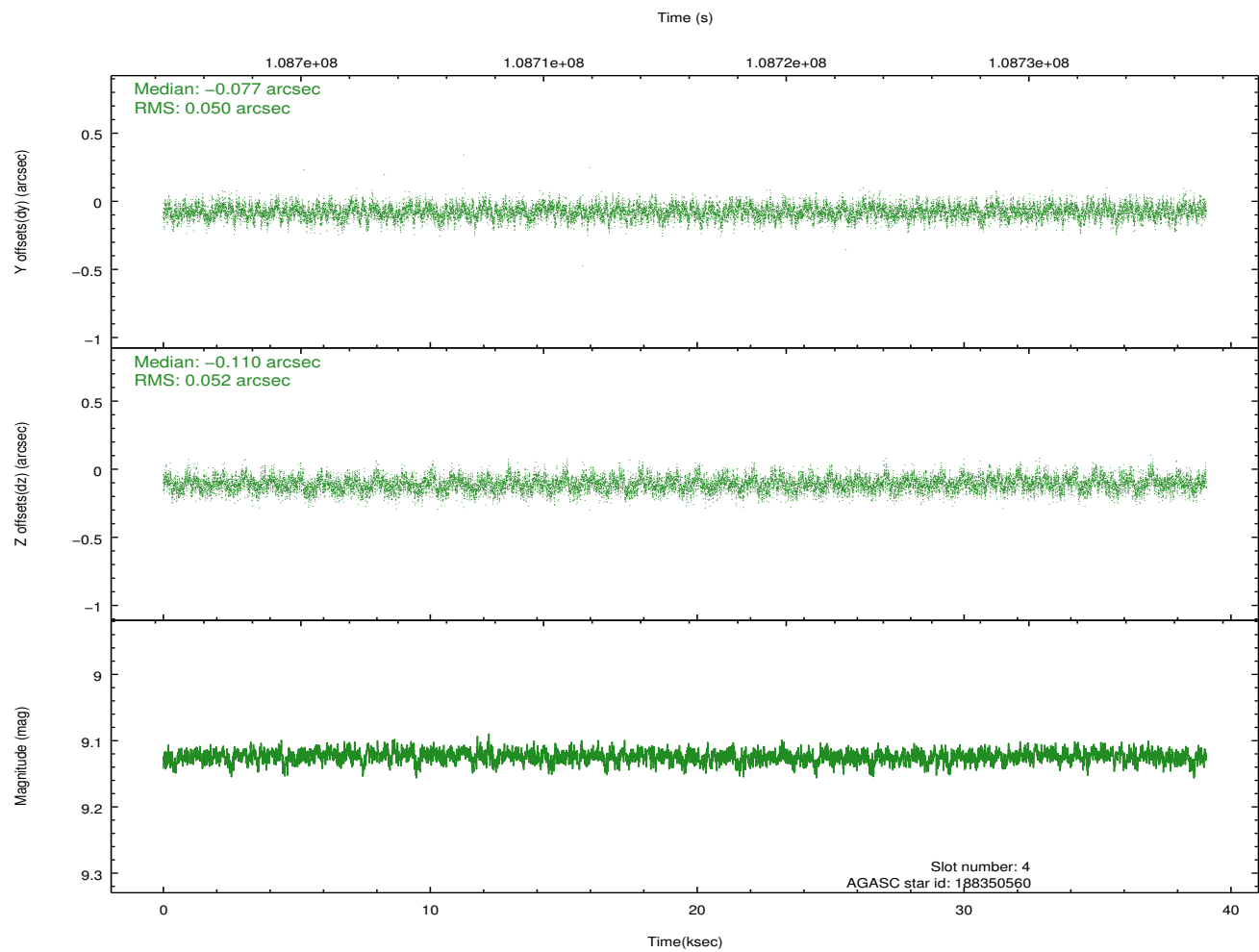
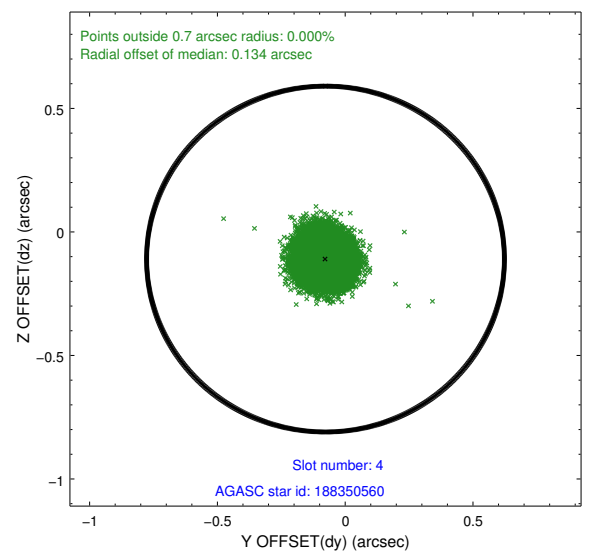
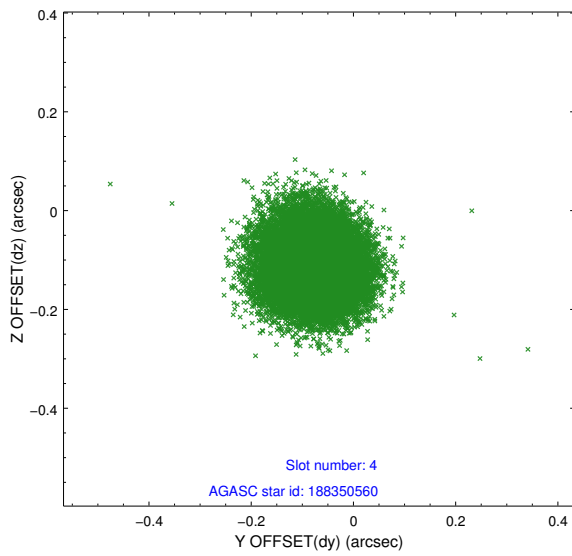
slot	status	id	mag	n_pts	med_dy	med_dz	dr1	dr2	ra	dec	mean_y	mean_z
0	FID	ACIS-I-2	7.17	9529	-0.066	-0.035	0.010	0.017	0.000000	0.000000	-756.36	-968.62
1	FID	ACIS-I-4	7.16	9530	-0.023	0.053	0.007	0.013	0.000000	0.000000	2157.65	937.64
2	FID	ACIS-I-5	7.23	9531	-0.013	0.052	0.009	0.015	0.000000	0.000000	-1809.82	934.59
3	GUIDE	188626192	8.87	19060	-0.197	-0.071	0.074	0.117	169.132723	18.856452	-2289.35	-1280.76
4	GUIDE	188350560	9.12	19055	-0.077	-0.110	0.077	0.124	169.125610	18.641654	-1562.16	-1016.81
5	GUIDE	188371152	10.00	19039	0.130	0.067	0.138	0.230	169.317956	17.570920	1773.44	1024.75
6	GUIDE	188358160	10.31	19042	0.126	-0.056	0.126	0.208	168.610775	18.068520	1005.32	-1889.47
7	GUIDE	188352832	9.88	19050	0.017	0.166	0.124	0.202	169.850472	18.107090	-697.94	1998.35

2.4 Star Slots

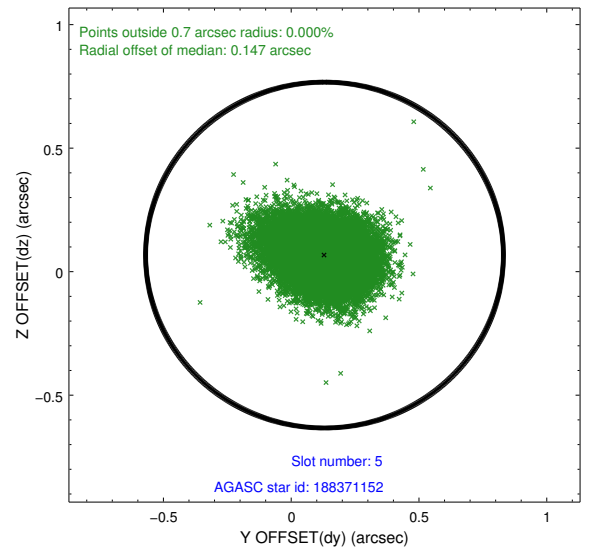
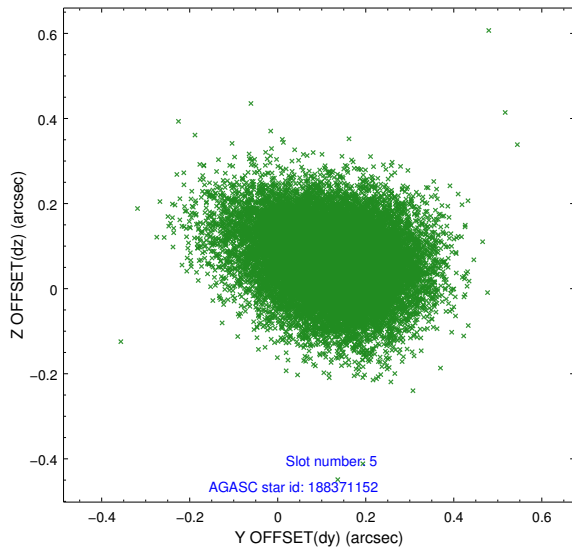
2.4.1 Slot 3



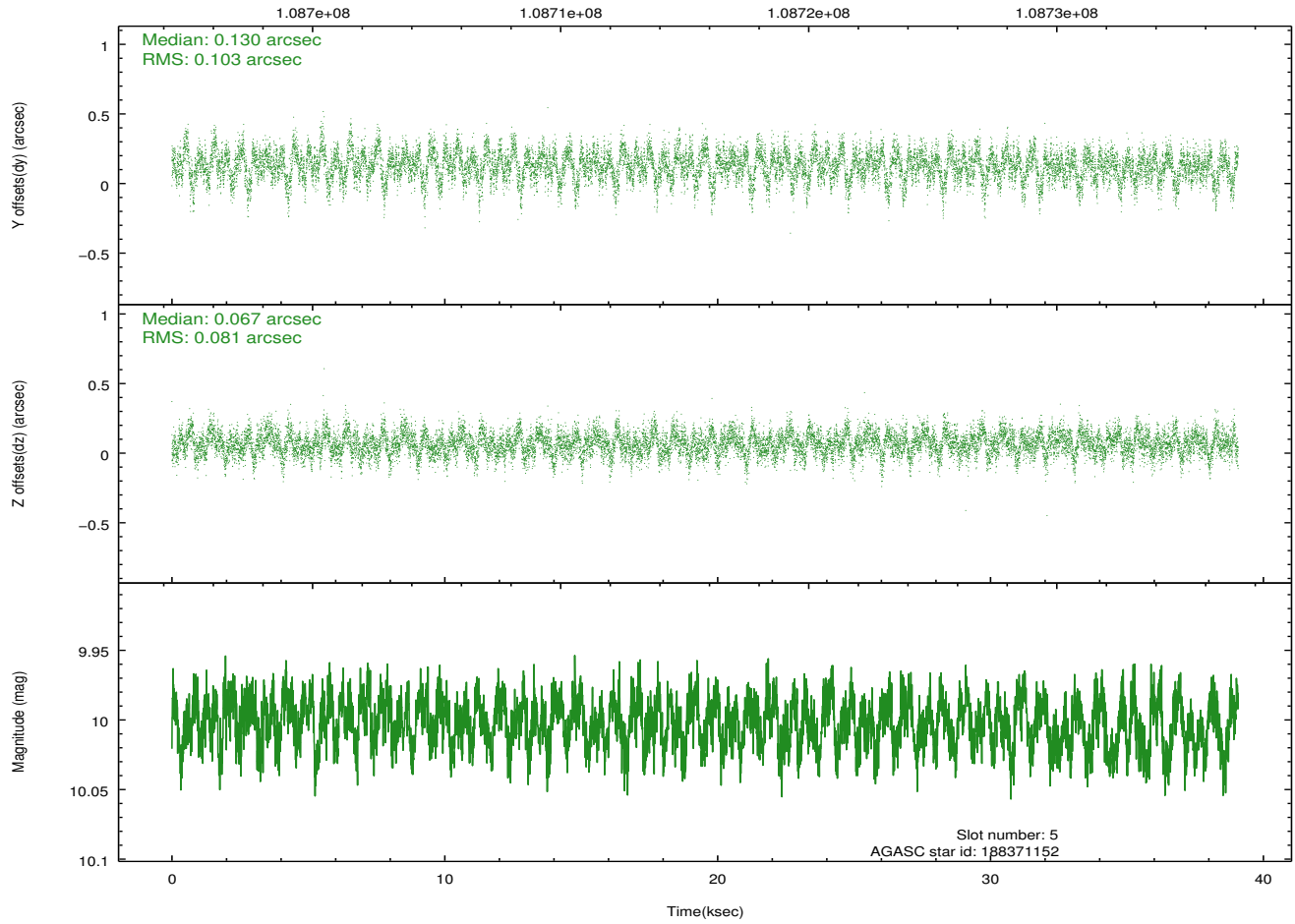
2.4.2 Slot 4



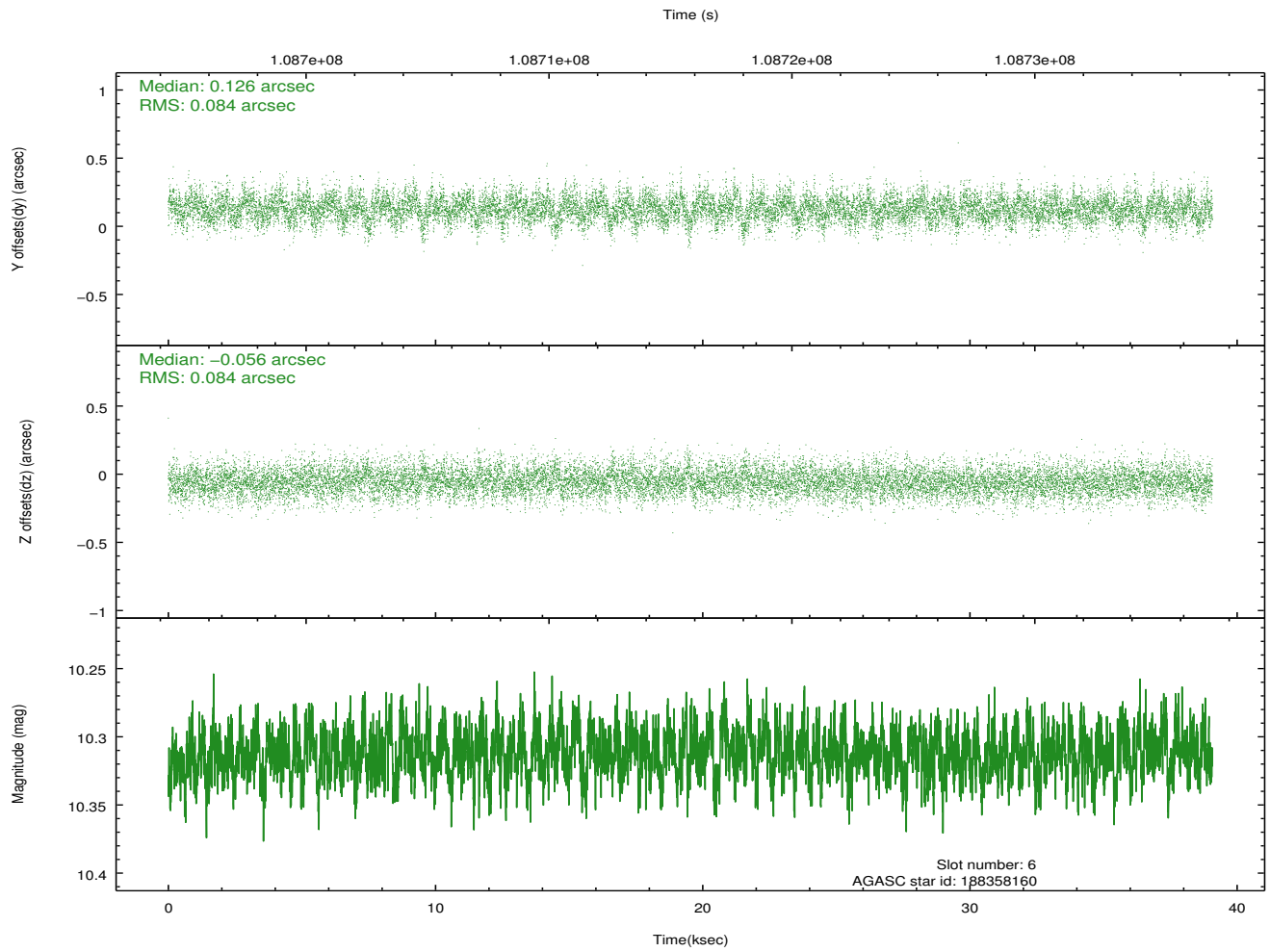
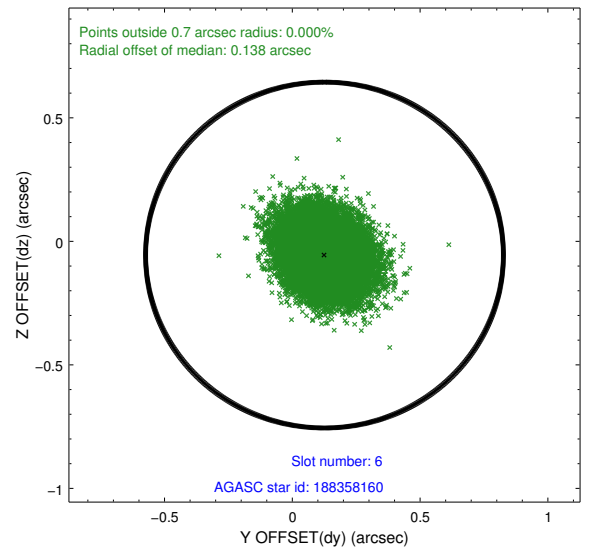
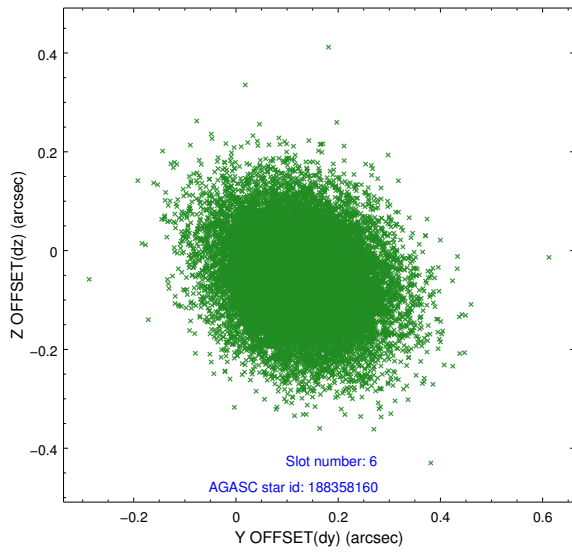
2.4.3 Slot 5



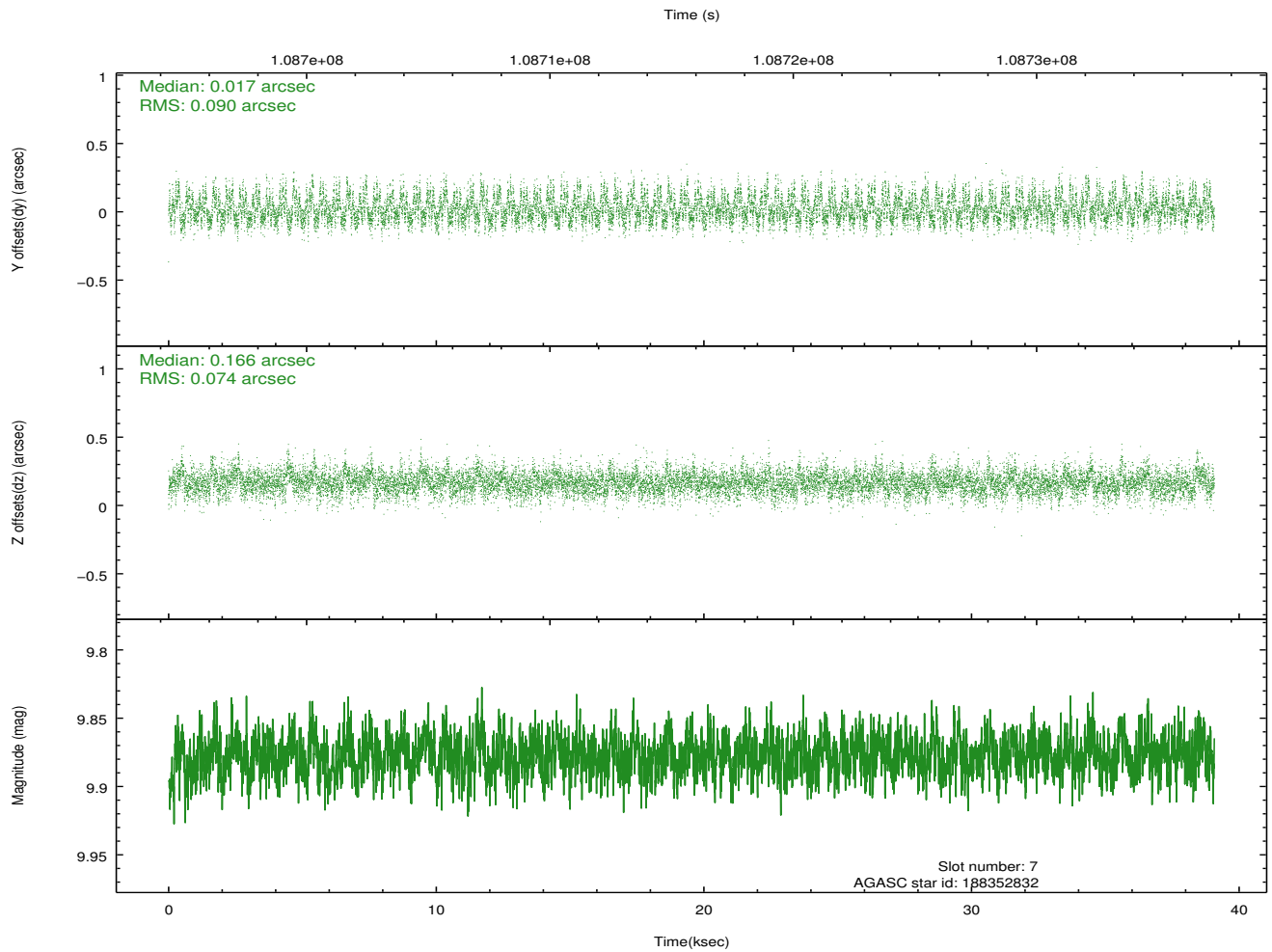
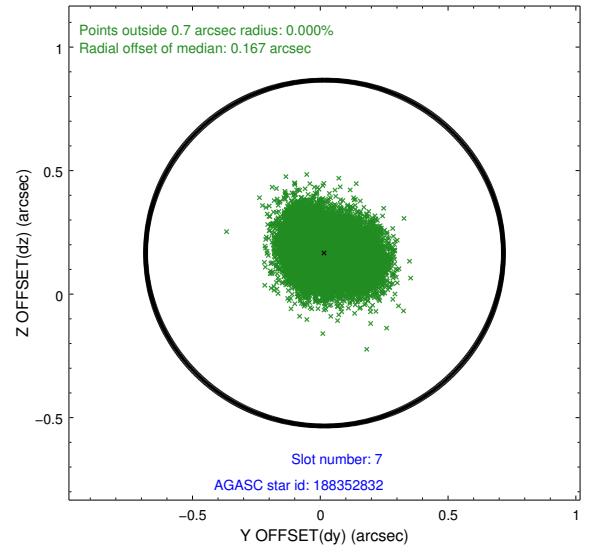
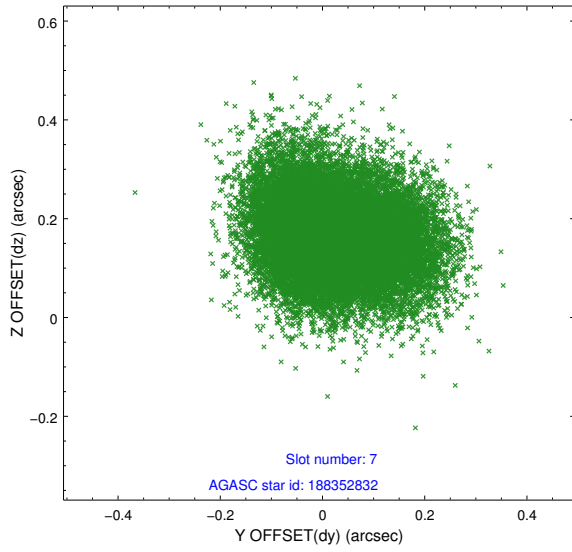
Time (s)



2.4.4 Slot 6

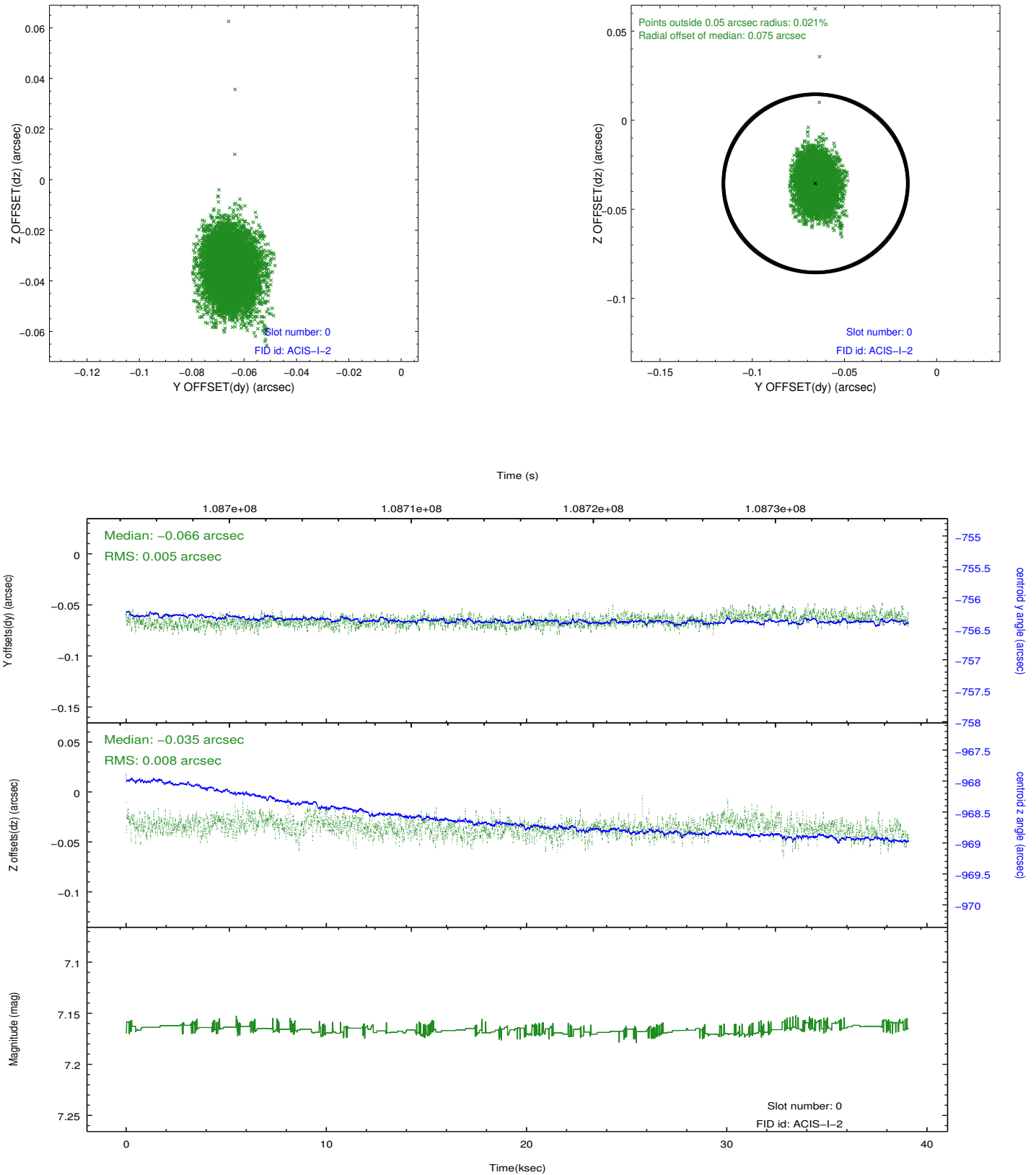


2.4.5 Slot 7

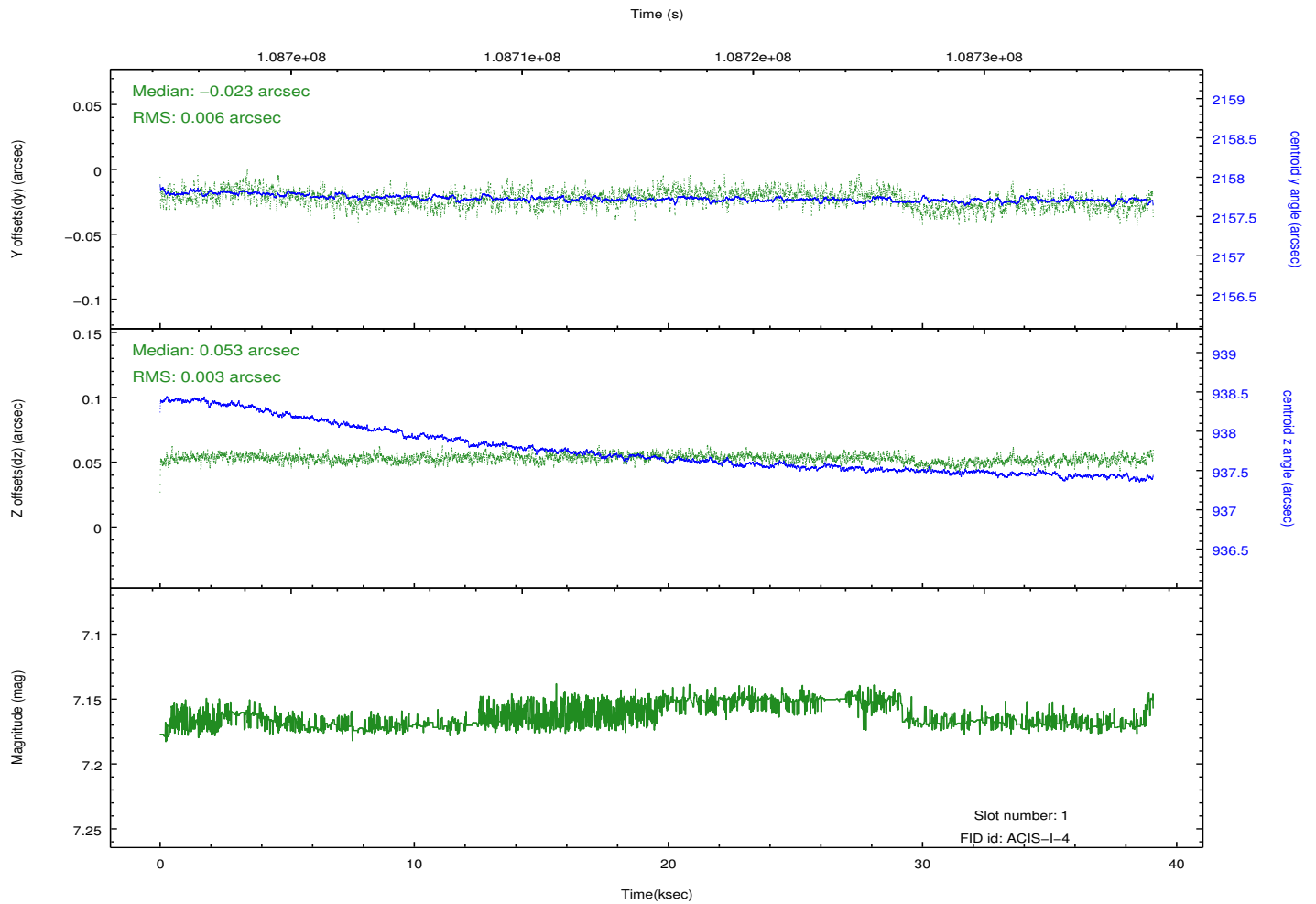
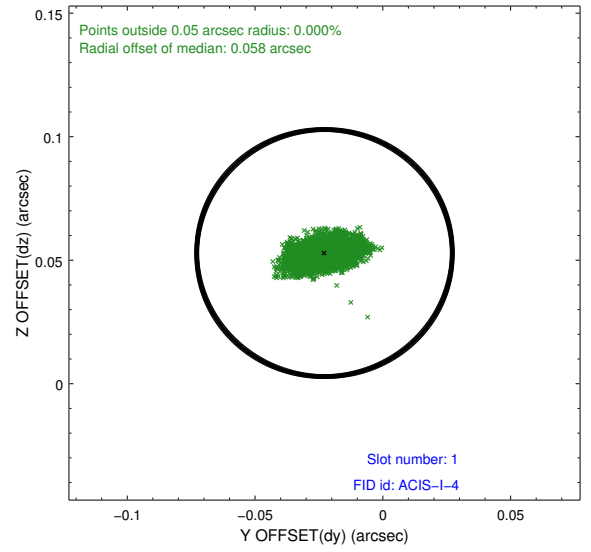
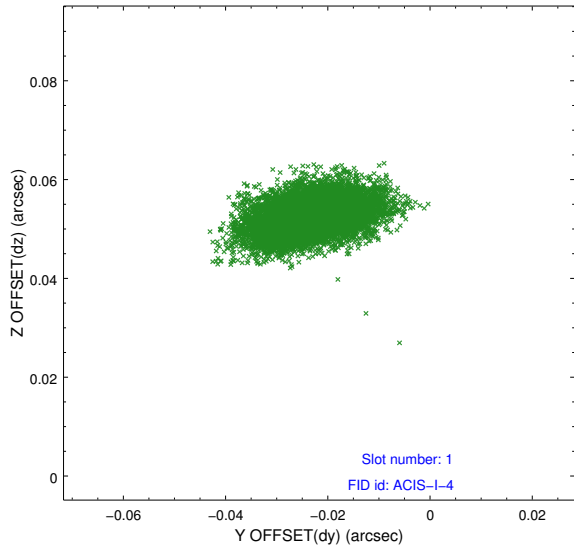


2.5 FID Slots

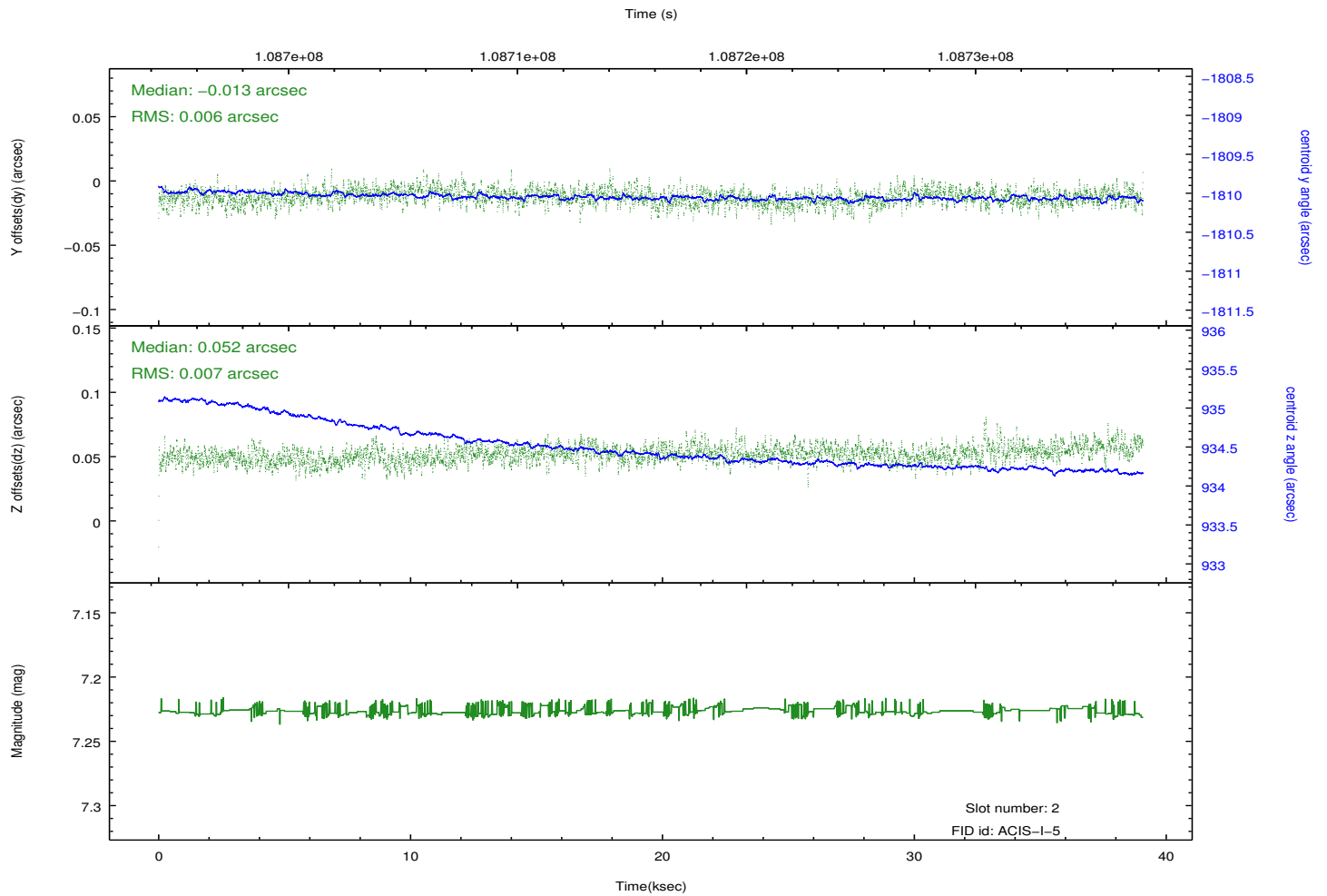
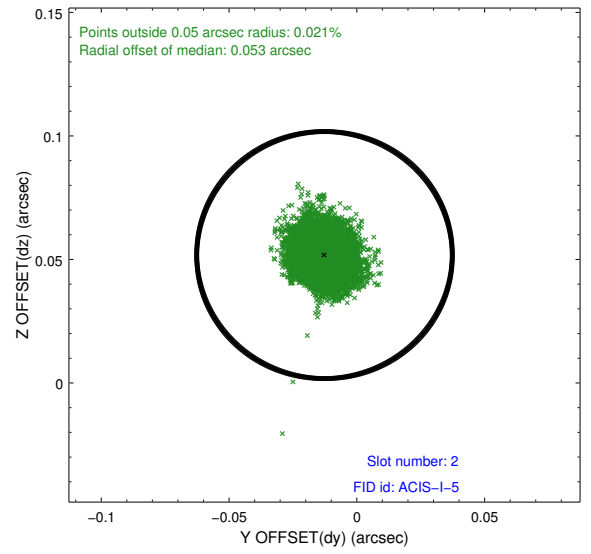
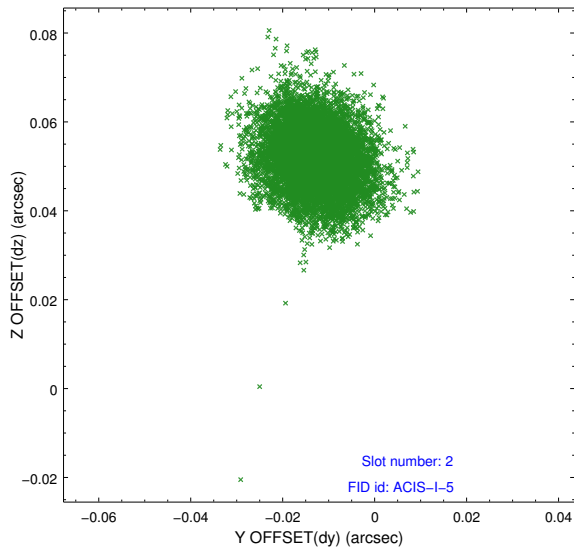
2.5.1 Slot 0



2.5.2 Slot 1



2.5.3 Slot 2



A Summary

A.1 Status

V&V Scientist	Beth Sundheim
V&V Date (YYYY-MM-DD)	2012.09.20
V&V Edition	1
V&V Disposition and Status	OK
V&V Charge Time	39

A.2 Comments