

V&V Reference Report

L2 ASCDS Version : 8.4.5

Observation 2203 - L2 Version 3
Chandra X-Ray Center

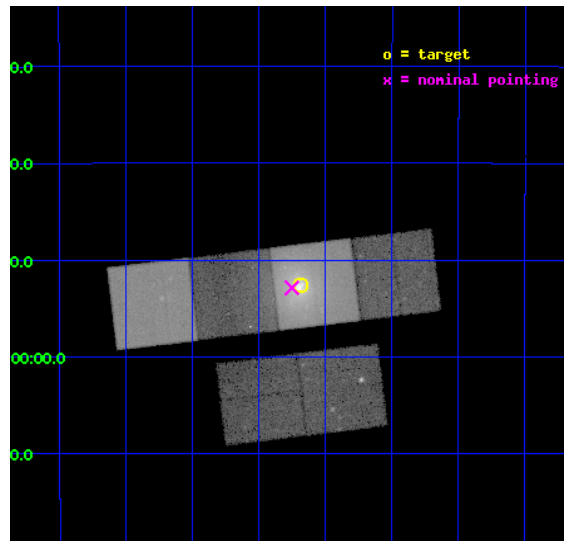
L2 Processing Date : Sep 2 2012

Contents

1	Front	2
2	OBI	3
2.1	OBI	3
2.1.1	Images	3
2.1.2	Bias	3
2.1.3	Parameters	4
2.1.4	Events	4
2.2	Compared Parameters	5
2.3	Aspect	6
2.4	Star Slots	9
2.4.1	Slot 3	9
2.4.2	Slot 4	10
2.4.3	Slot 5	11
2.4.4	Slot 6	12
2.4.5	Slot 7	13
2.5	FID Slots	14
2.5.1	Slot 0	14
2.5.2	Slot 1	15
2.5.3	Slot 2	16
A	Summary	17
A.1	Status	17
A.2	Comments	17

1 Front

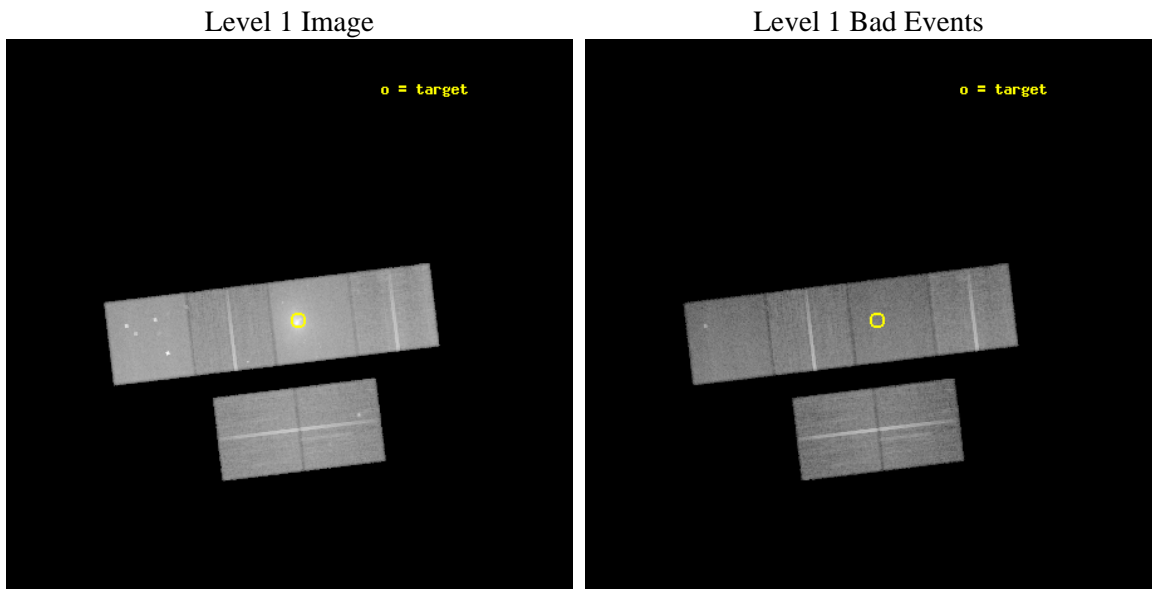
seq_num	800142	Sequence number
obs_id	2203	Observation id
title	FILAMENTARY RADIO RELICS AND MERGERS IN CLUSTERS OF GALAXIES	Propo
observer	Dr. CRAIG SARAZIN	Principal investigator
object	A133	Source name
dtcycle	0	
cycle	P	events from which exps? Prim/Second/Both
ra_targ	15.672083	Observer's specified target RA [deg]
dec_targ	-21.877778	Observer's specified target Dec [deg]
ra_nom	15.687963002016	Nominal RA [deg]
dec_nom	-21.881364056319	Nominal Dec [deg]
roll_nom	353.13511722867	Nominal Roll [deg]
revision	3	Processing version of data
ontime	35913.075243562	Sum of GTIs [s]
livetime	35458.322260571	Livetime [s]
ontime2	35913.116283566	Sum of GTIs [s]
ontime3	35912.952123567	Sum of GTIs [s]
ontime5	35913.034203559	Sum of GTIs [s]
ontime6	35912.993163571	Sum of GTIs [s]
ontime7	35913.075243562	Sum of GTIs [s]
ontime8	35912.911083564	Sum of GTIs [s]
l2events	503627	Number of level 2 events



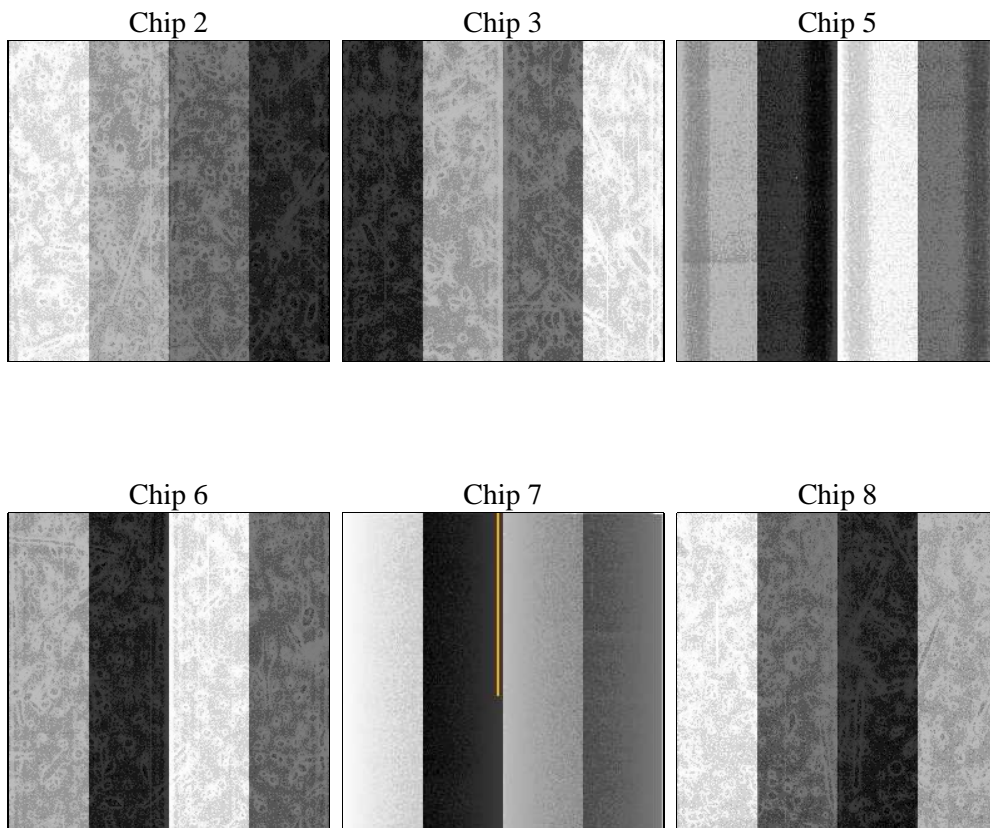
2 OBI

2.1 OBI

2.1.1 Images



2.1.2 Bias



2.1.3 Parameters

obi_num	0	Obi number	sched_exp_time	36000.000000	[s] Scheduled observation exposure time
ascdsver	8.4.5	Processing system revision	ontime	35913.075243562	Sum of GTIs [s]
caldbver	4.5.1.1	 	ontime2	35913.116283566	Sum of GTIs [s]
date	2012-09-02T10:33:17	Date and time of file creation	ontime3	35912.952123567	Sum of GTIs [s]
revision	3	Processing version of data	ontime5	35913.034203559	Sum of GTIs [s]
			ontime6	35912.993163571	Sum of GTIs [s]
			ontime7	35913.075243562	Sum of GTIs [s]
			ontime8	35912.911083564	Sum of GTIs [s]
			l1events	1682229	Number of level 1 events

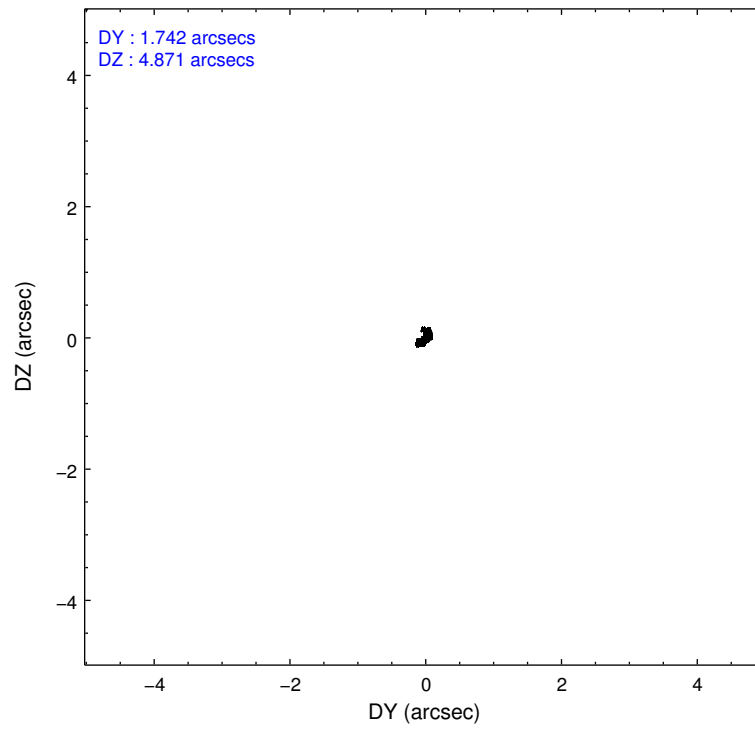
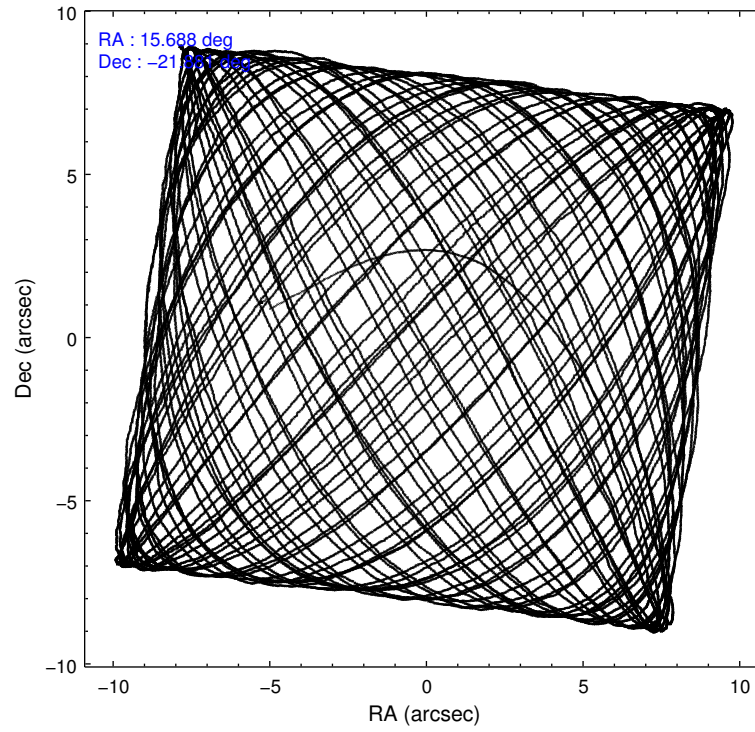
2.1.4 Events

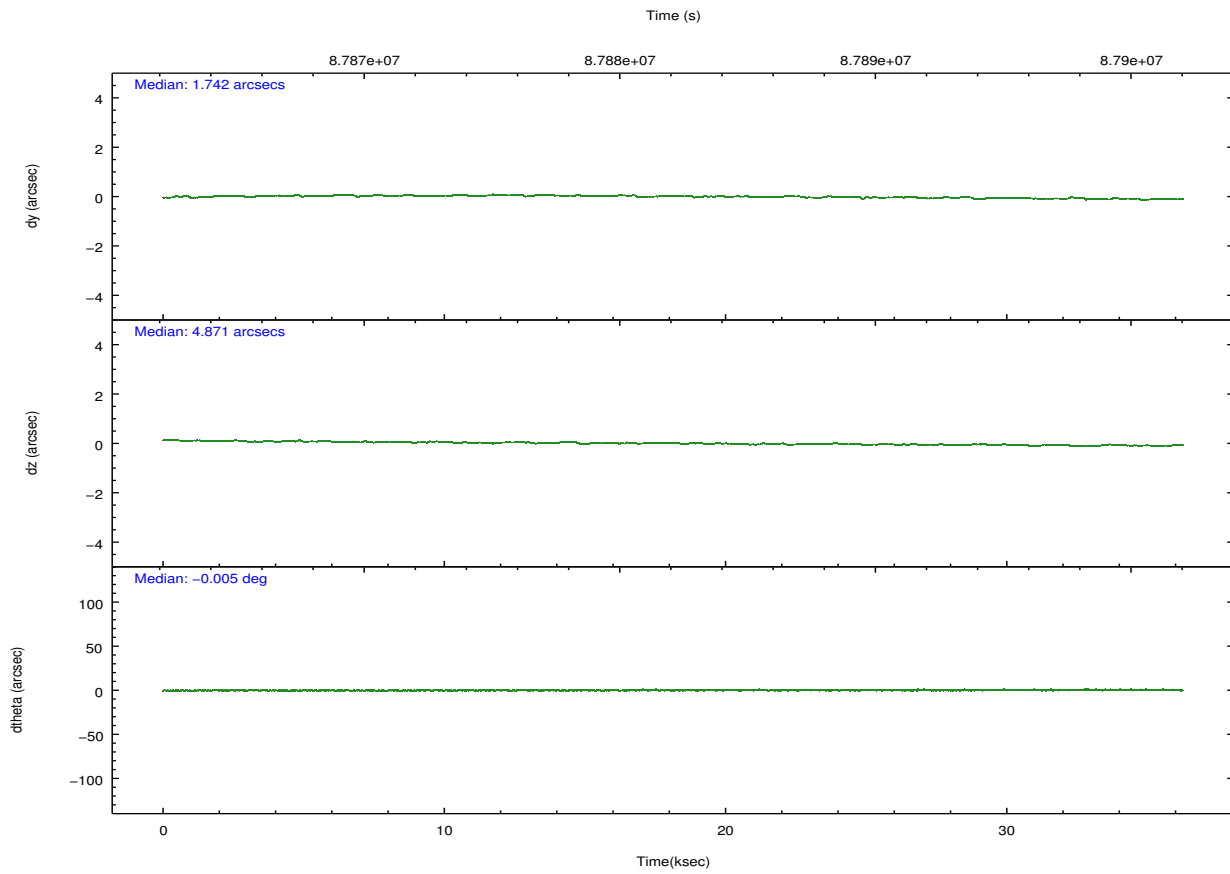
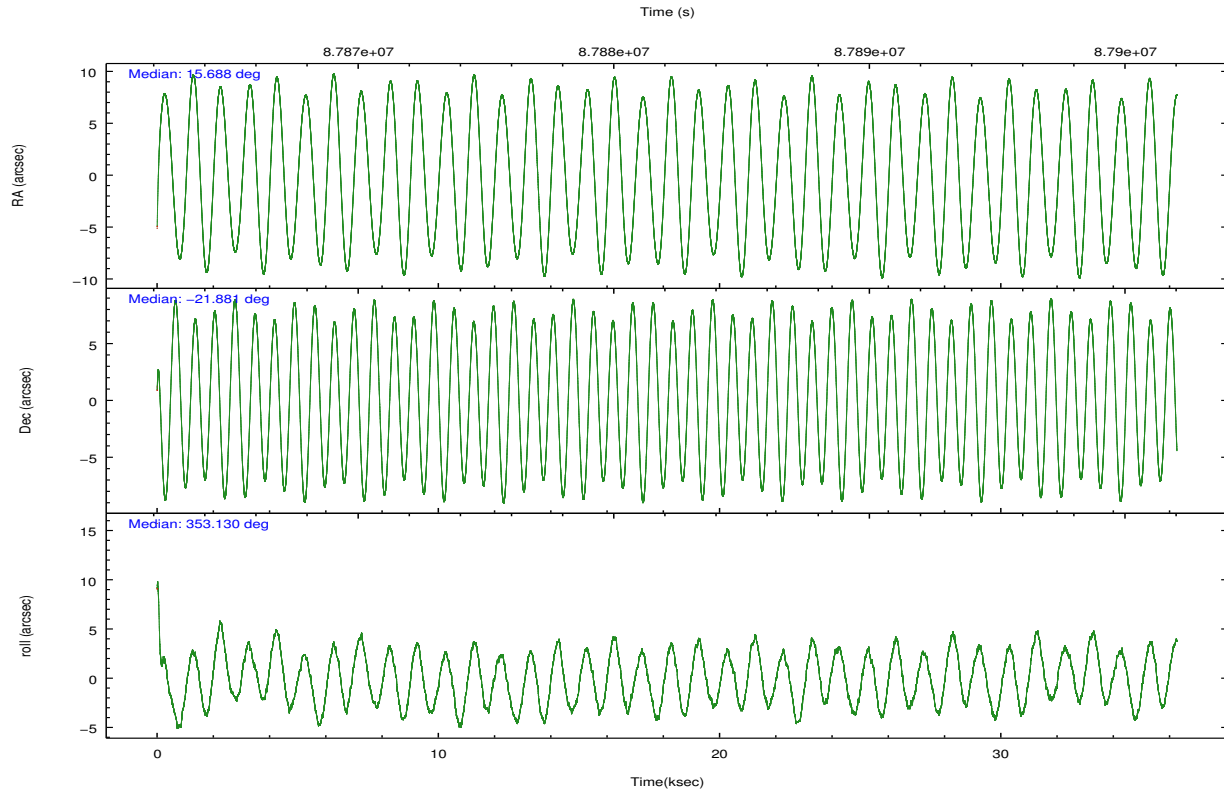
	ccd 2	ccd 3	ccd 5	ccd 6	ccd 7	ccd 8		ccd 2	ccd 3	ccd 5	ccd 6	ccd 7	ccd 8
level 1 events	222461	213256	312905	230849	427553	275205	grade 0 events	11293	13930	27547	18895	63241	19779
rejected events	197219	185219	160880	195587	158015	218886		5%	6%	8%	8%	14%	7%
rejected %	88%	86%	51%	84%	36%	79%	grade 1 events	103	101	1057	110	251	152
								0%	0%	0%	0%	0%	0%
							grade 2 events	5246	5080	40010	5833	61818	11545
								2%	2%	12%	2%	14%	4%
							grade 3 events	2203	2380	6608	2783	28288	5921
								0%	1%	2%	1%	6%	2%
							grade 4 events	2257	2418	6286	2792	27857	5478
								1%	1%	2%	1%	6%	1%
							grade 5 events	7174	7767	22847	8969	26669	11077
								3%	3%	7%	3%	6%	4%
							grade 6 events	4247	4232	71589	4962	88361	13636
								1%	1%	22%	2%	20%	4%
							grade 7 events	189938	177348	136961	186505	131068	207617
								85%	83%	43%	80%	30%	75%

2.2 Compared Parameters

Parameter	Planned	Actual	Parameter	Planned	Actual
Instrument	ACIS	ACIS	Obspar format version number	7	7
Detector	ACIS-235678	ACIS-235678	Obspar file type	PREDICTED	ACTUAL
Grating	NONE	NONE	Obspar update status	NONE	UPDATED
Data mode	FAINT	FAINT	Number of optional ACIS chips dropped	0	0
Observation mode	POINTING	POINTING	On-chip summing requested	N	N
[deg] Pointing RA	15.660923	15.68796300201567	Subarray requested	NONE	NONE
[deg] Pointing Dec	-21.892286	-21.88136405631854	Alternating exposures requested	N	N
[deg] Pointing Roll	352.968412	353.1351172286671	[s] Primary exposure time	0.000000	3.2
[mm] SIM focus pos	-0.684267	-0.6828225247311905			
[mm] SIM defocus	0	0.001444936568705701			
[mm] SIM translation stage pos	-190.132523	-190.1400660498719			
[mm] SIM translation stage offset	0	0.00754346686406393			
[s] Observation start time (MET)	87864214.184000	87863222.87876			
Observation start date	2000-10-13T22:42:30	2000-10-13T22:27:02			
[s] Observation end time (MET)	87900214.184000	87900810.65518001			
Observation end date	2000-10-14T08:42:30	2000-10-14T08:53:30			
Read mode	TIMED	TIMED			

2.3 Aspect



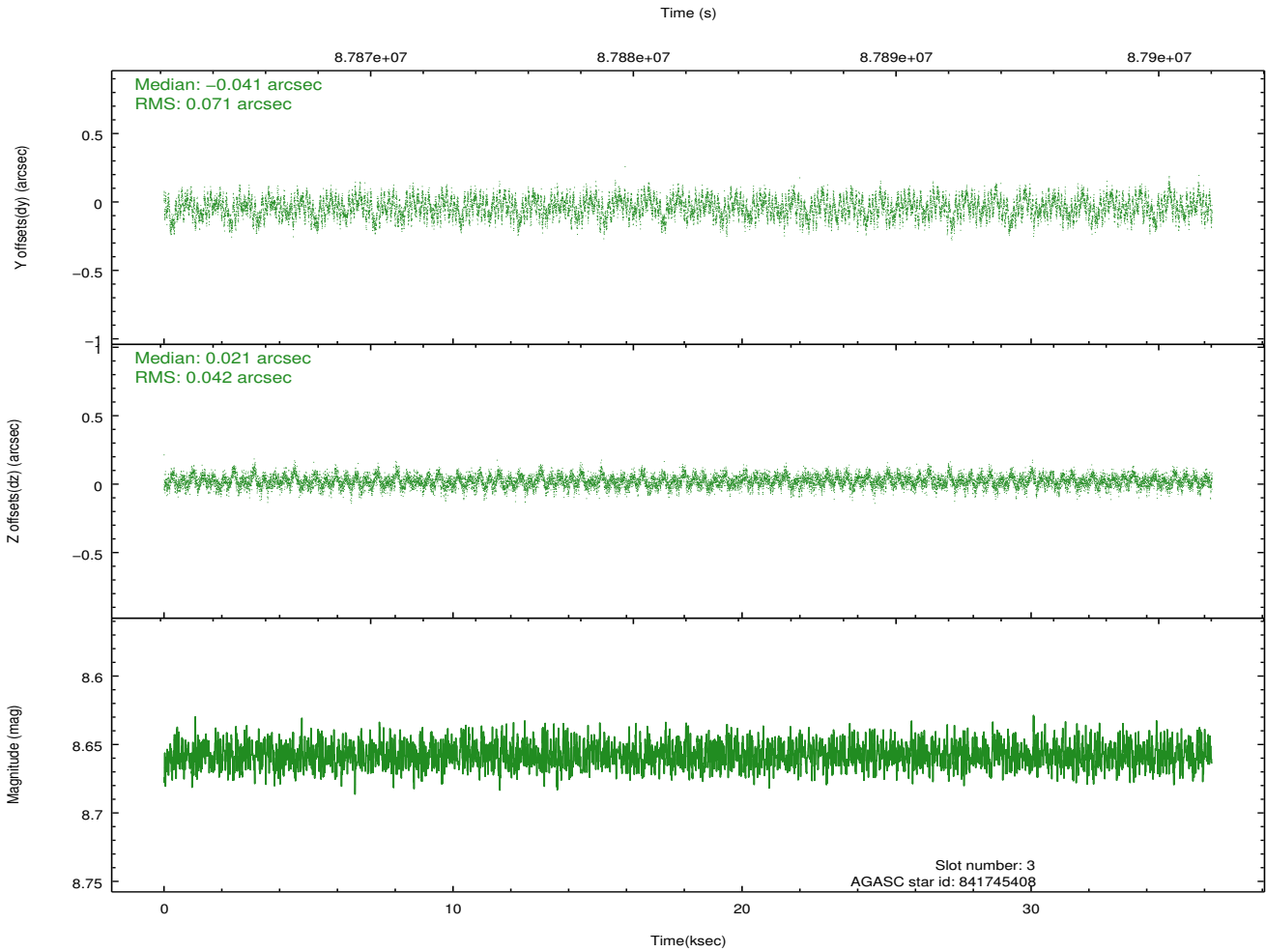
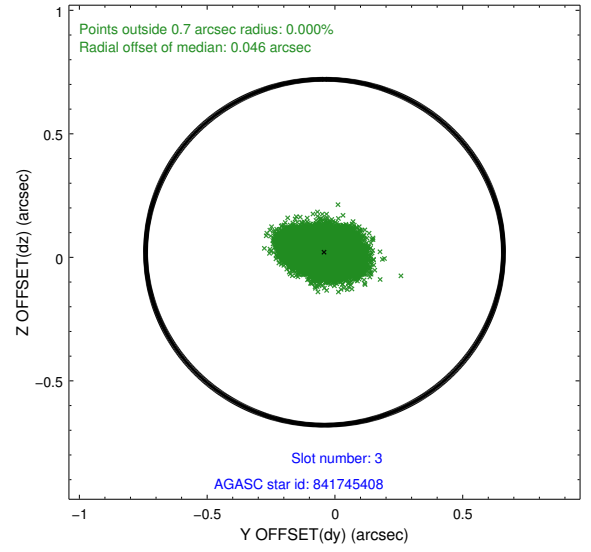
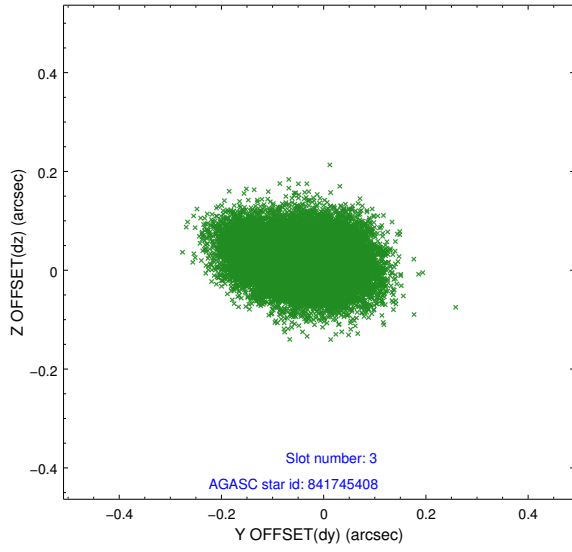


Slot Statistics

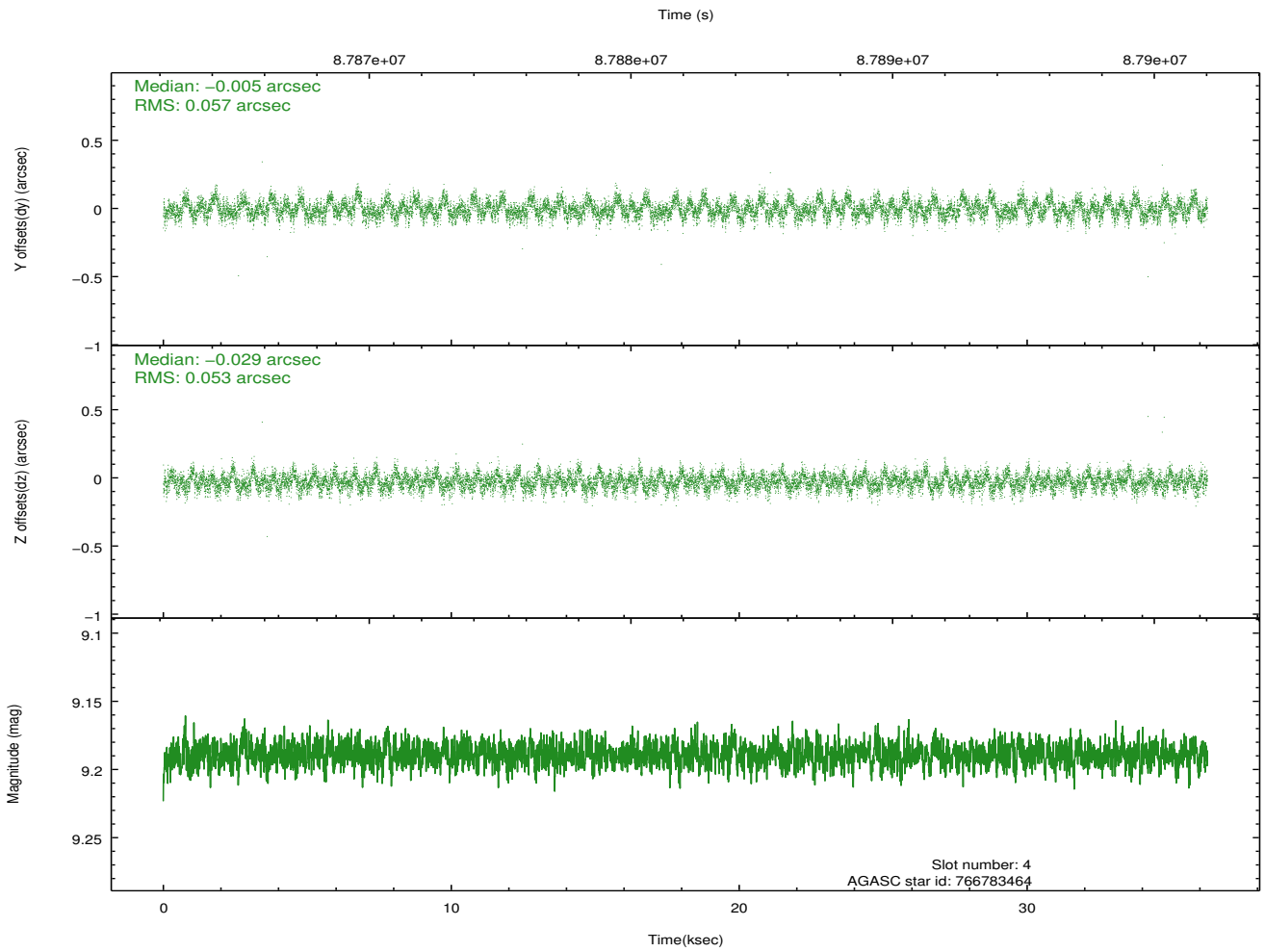
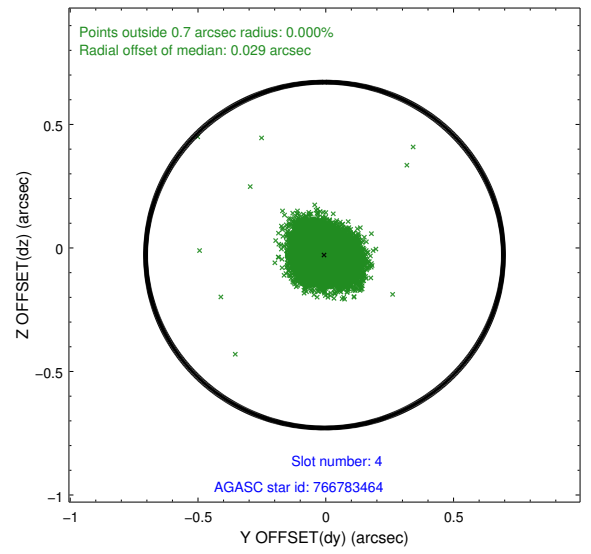
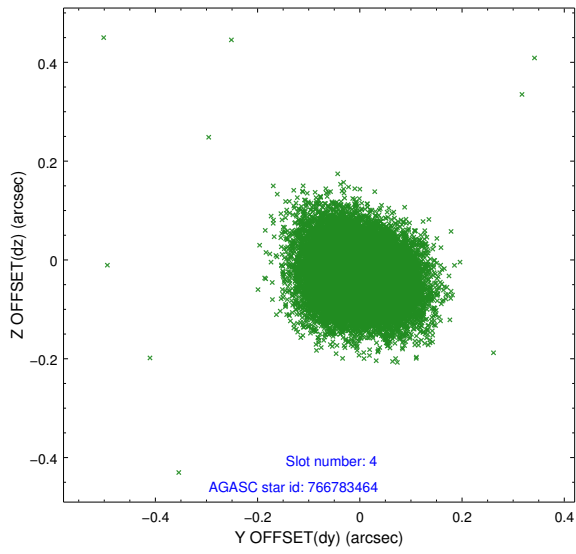
slot	status	id	mag	n_pts	med_dy	med_dz	dr1	dr2	ra	dec	mean_y	mean_z
0	FID	ACIS-S-2	7.11	8844	-0.042	-0.008	0.007	0.011	0.000000	0.000000	-754.36	-1726.00
1	FID	ACIS-S-4	7.20	8844	-0.010	0.022	0.006	0.011	0.000000	0.000000	2158.91	182.52
2	FID	ACIS-S-5	7.24	8844	0.021	-0.006	0.006	0.011	0.000000	0.000000	-1807.12	176.15
3	GUIDE	841745408	8.66	17685	-0.041	0.021	0.089	0.143	16.162435	-22.504118	1926.02	-1984.45
4	GUIDE	766783464	9.19	17684	-0.005	-0.029	0.084	0.133	15.041422	-22.197983	-1913.54	-1349.53
5	GUIDE	767171936	10.15	17676	0.042	0.020	0.150	0.245	16.105335	-22.483256	1728.45	-1932.64
6	GUIDE	766779344	10.05	17616	0.037	0.018	0.130	0.206	15.380905	-21.452302	-1124.60	1456.11
7	GUIDE	767171568	9.97	17673	-0.027	-0.031	0.136	0.216	16.035890	-22.108834	1337.22	-622.00

2.4 Star Slots

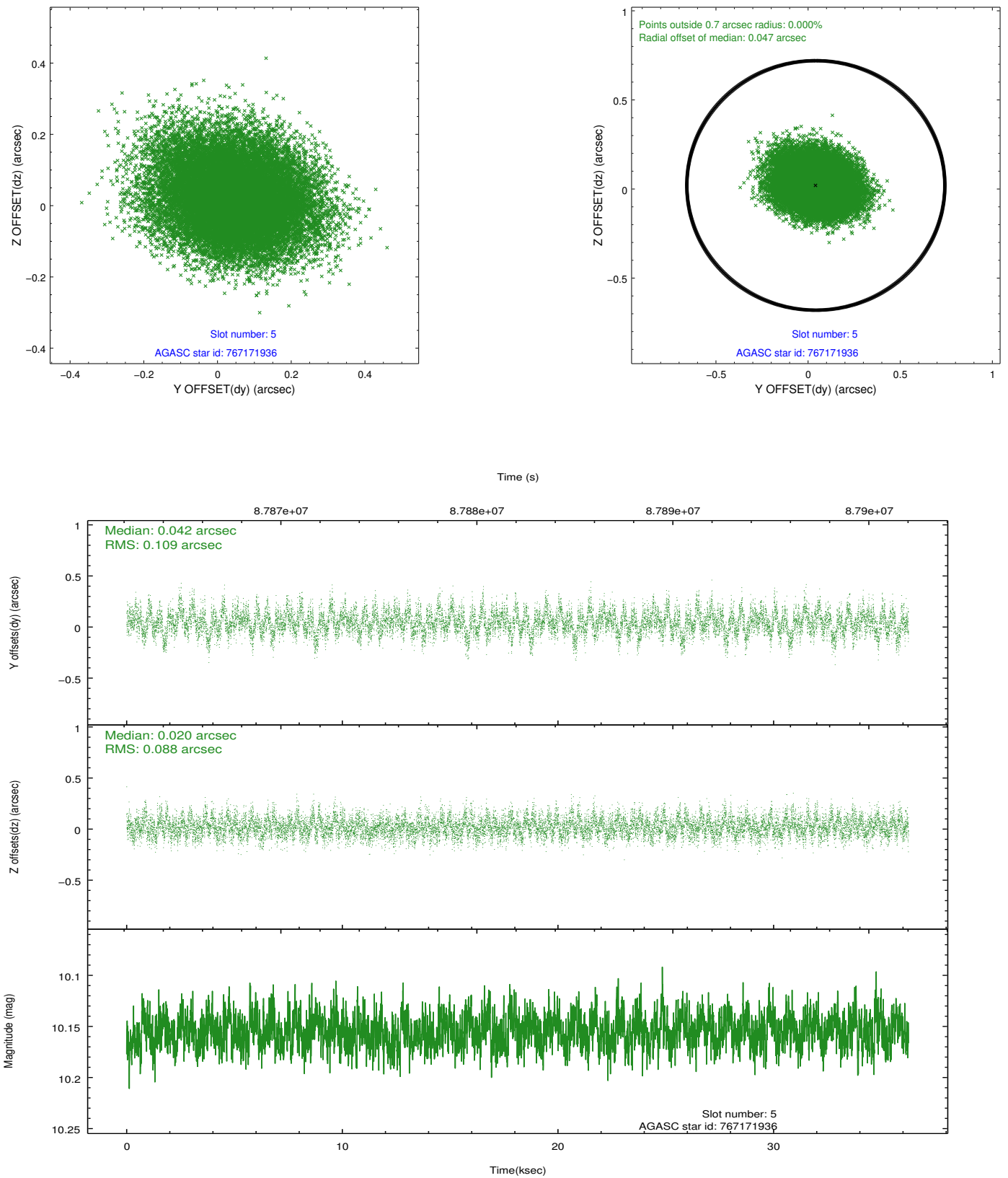
2.4.1 Slot 3



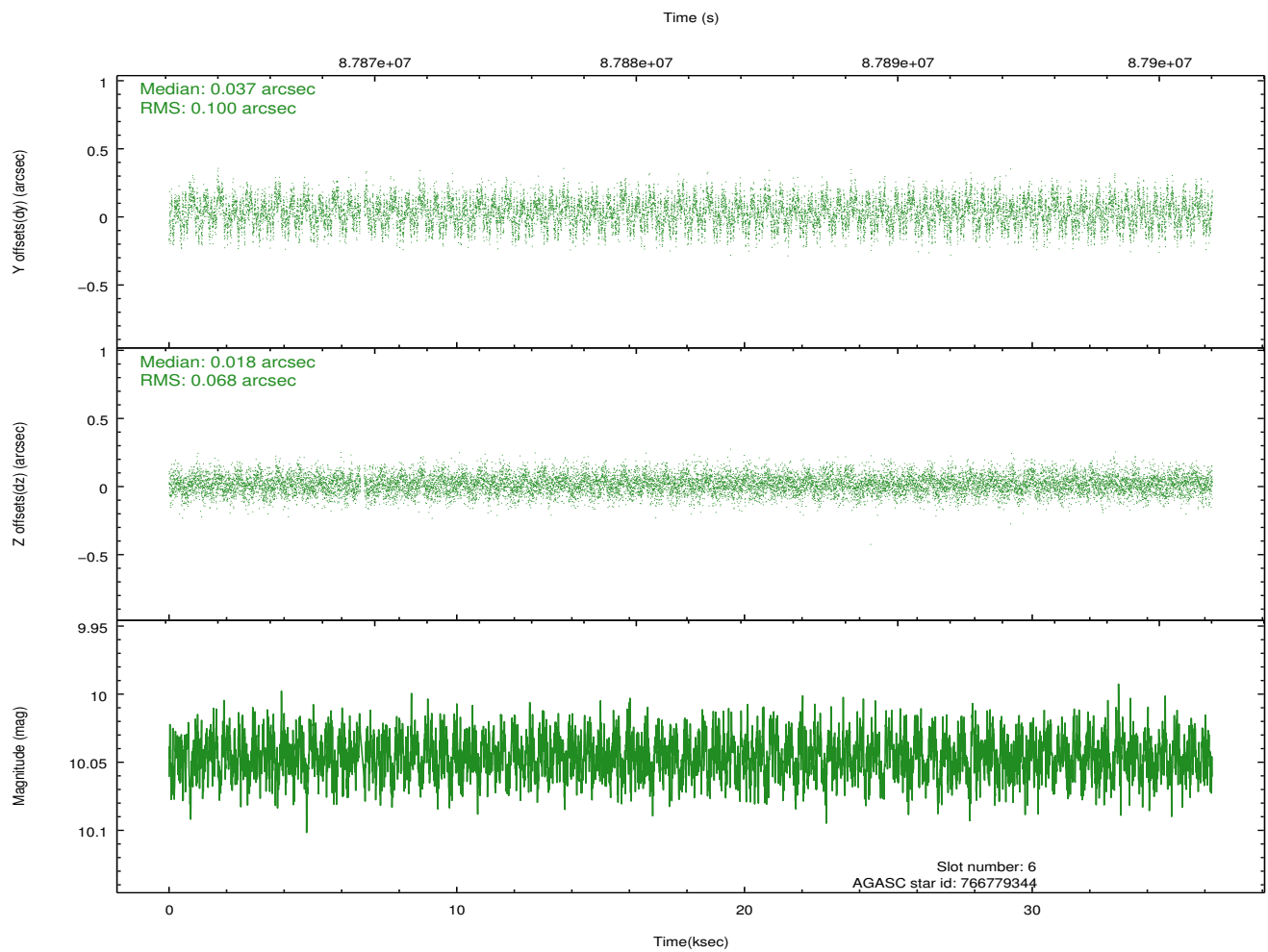
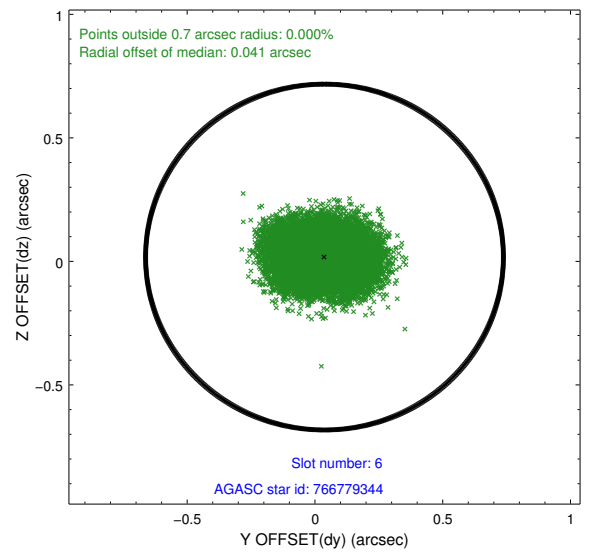
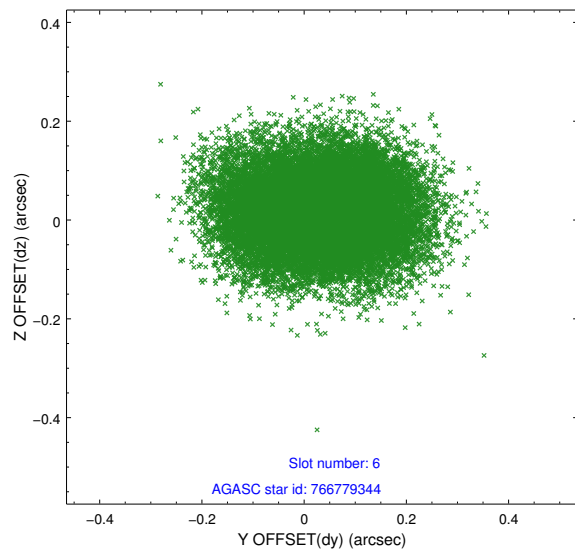
2.4.2 Slot 4



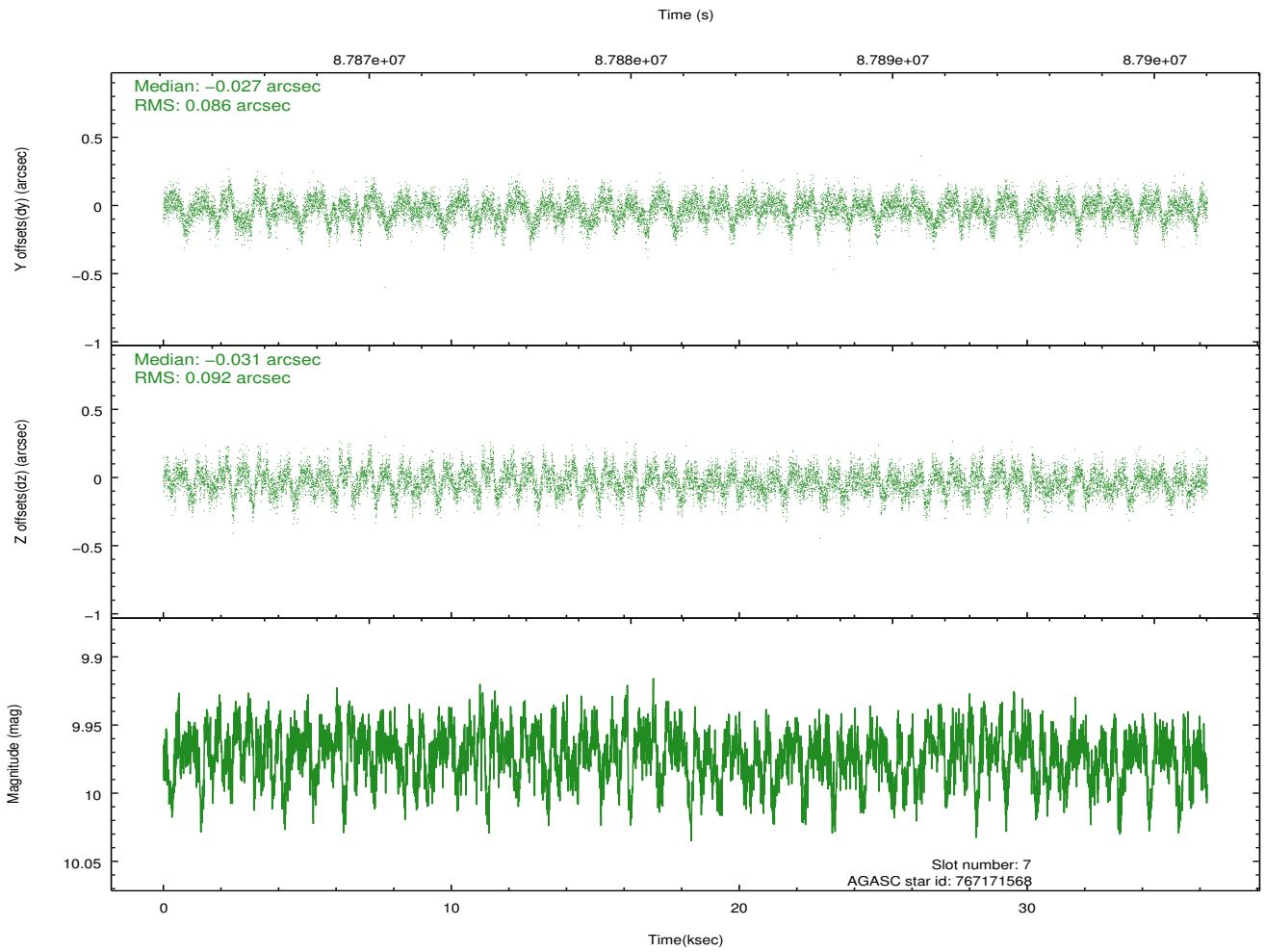
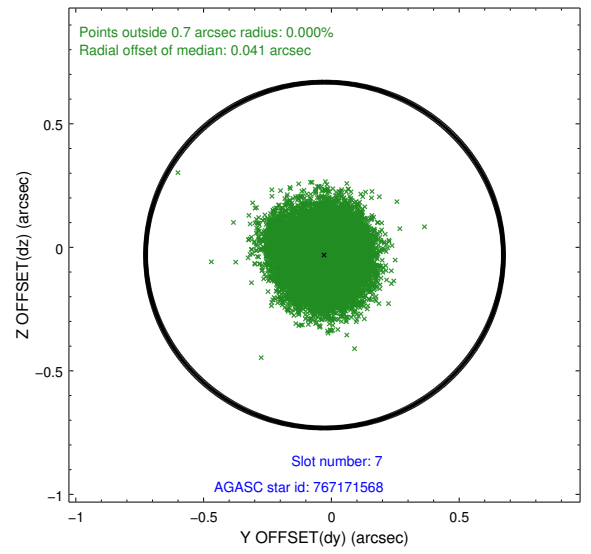
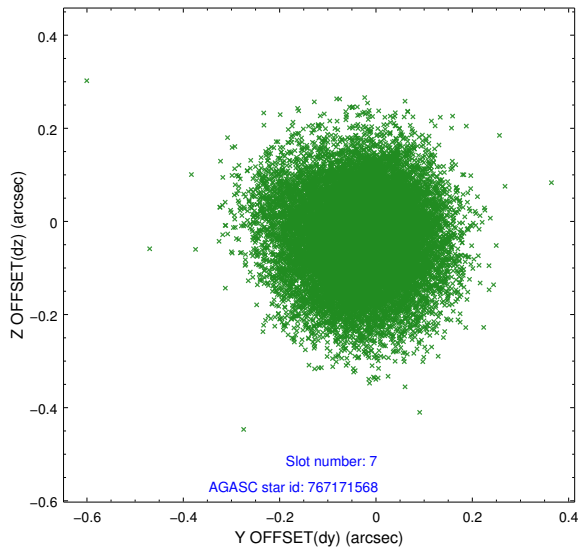
2.4.3 Slot 5



2.4.4 Slot 6

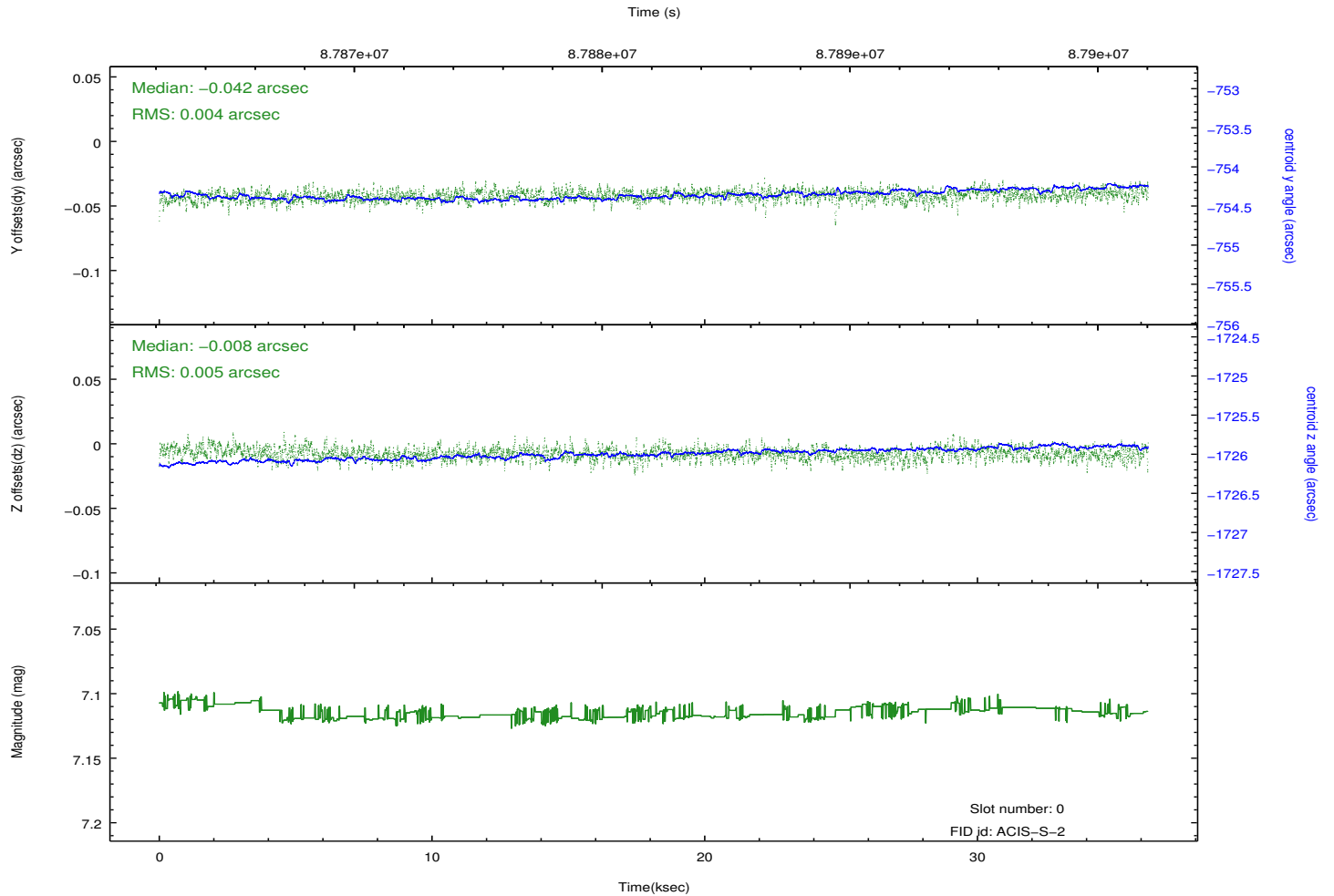
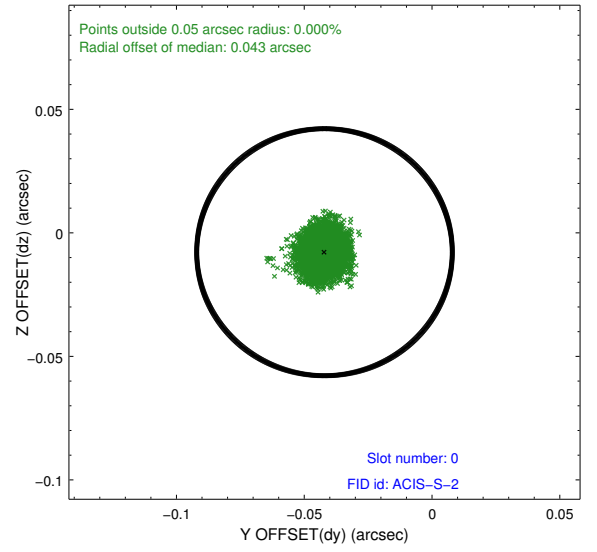
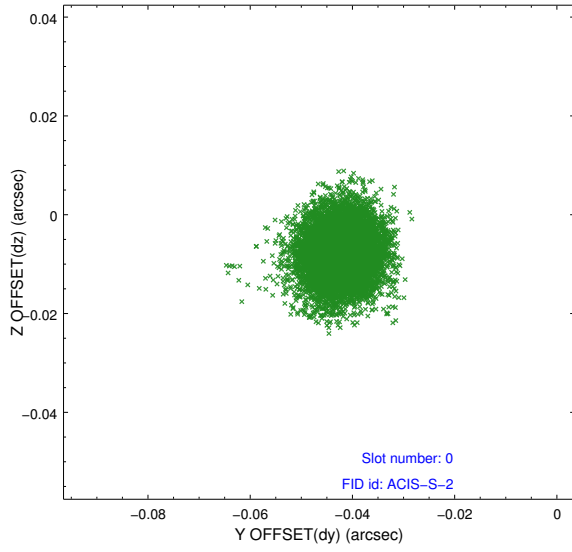


2.4.5 Slot 7

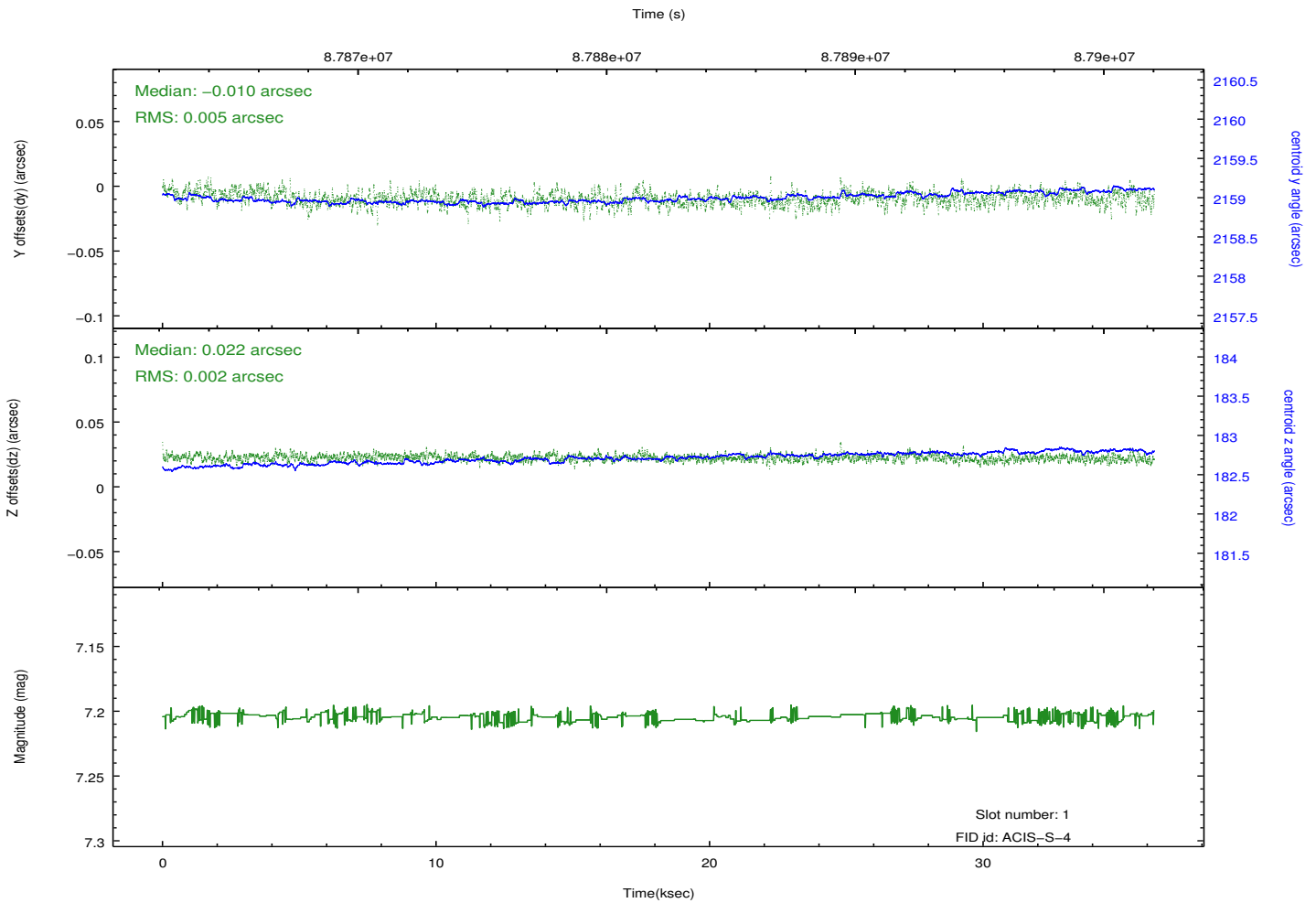
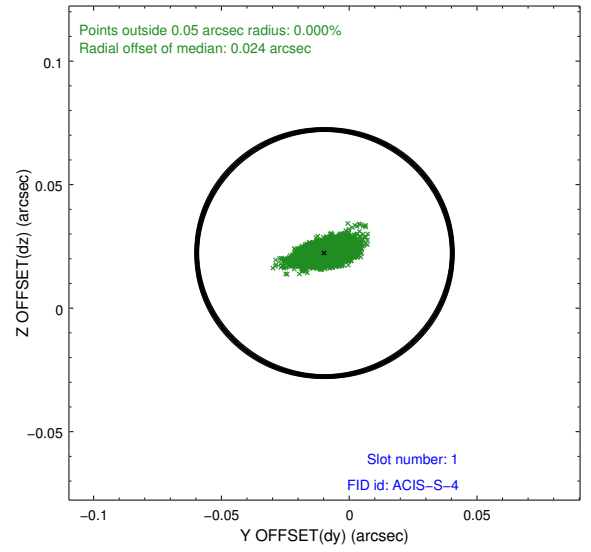
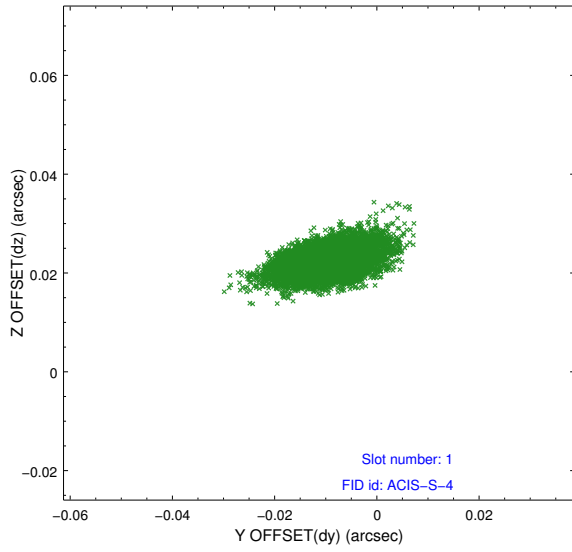


2.5 FID Slots

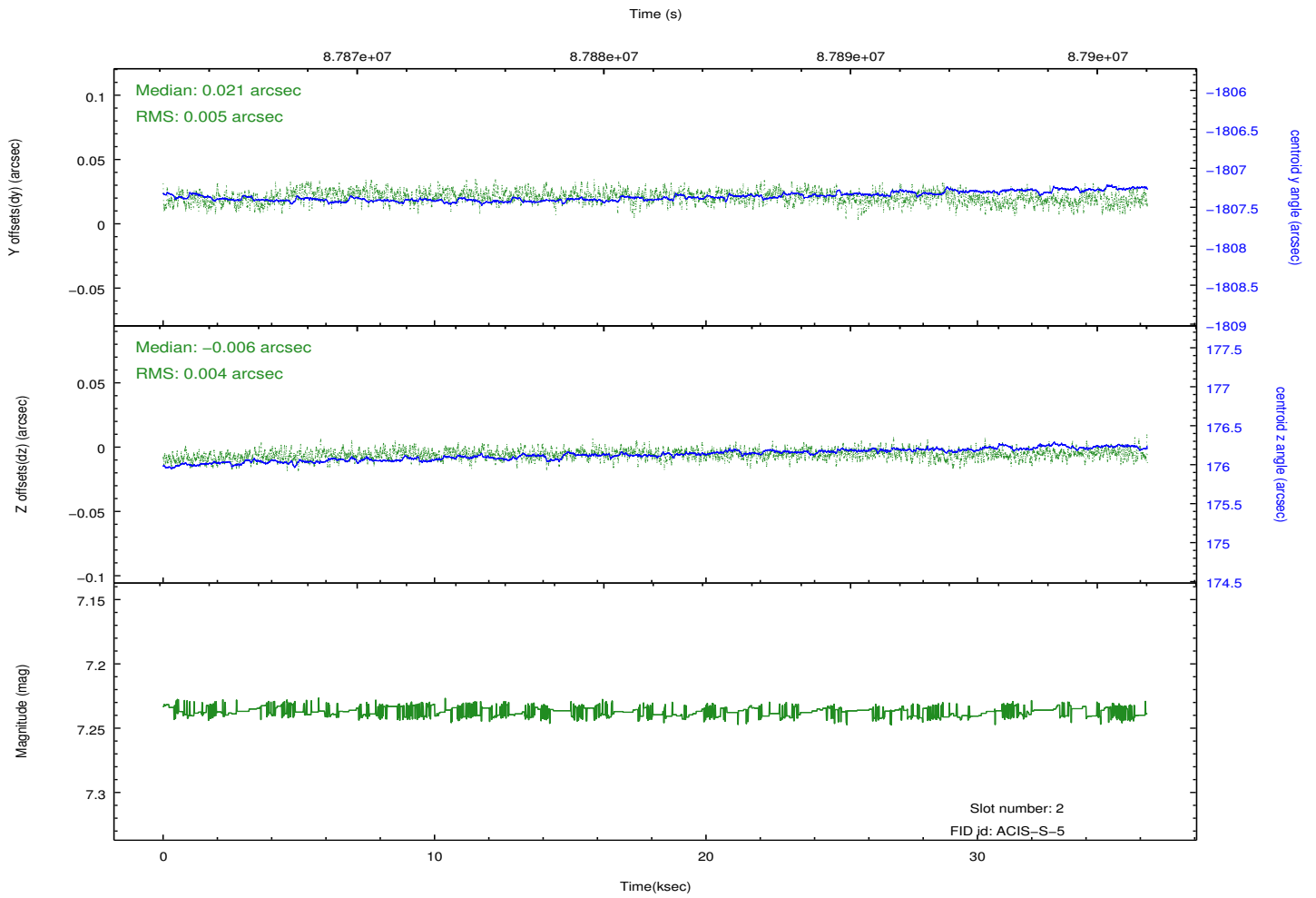
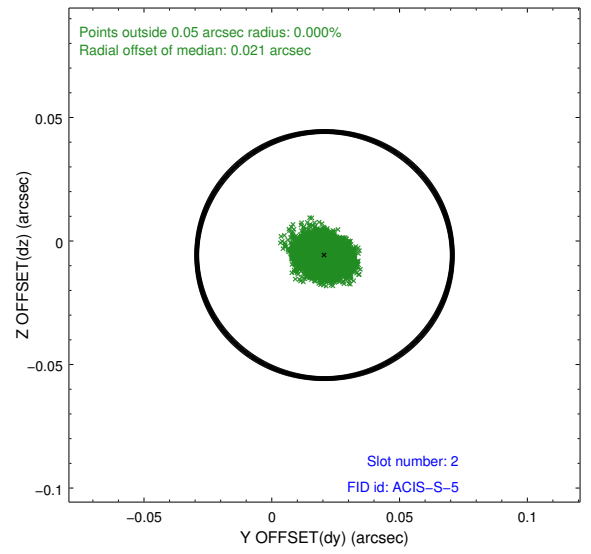
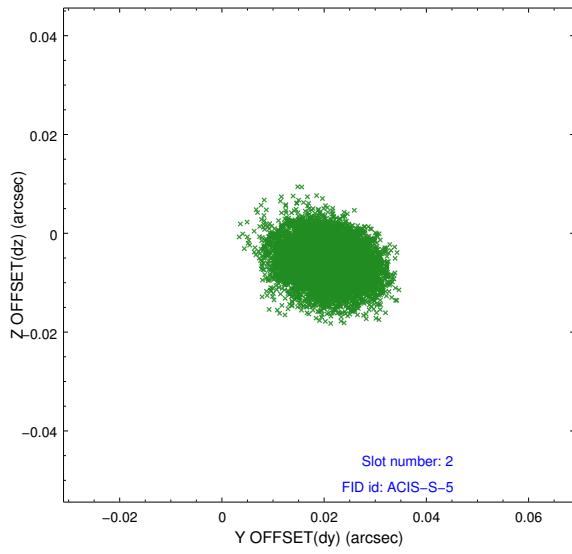
2.5.1 Slot 0



2.5.2 Slot 1



2.5.3 Slot 2



A Summary

A.1 Status

V&V Scientist	Jen Lauer
V&V Date (YYYY-MM-DD)	2012.09.10
V&V Edition	1
V&V Disposition and Status	OK
V&V Charge Time	35.913

A.2 Comments