

V&V Reference Report

L2 ASCDS Version : 8.4.5

Observation 2223 - L2 Version 3
Chandra X-Ray Center

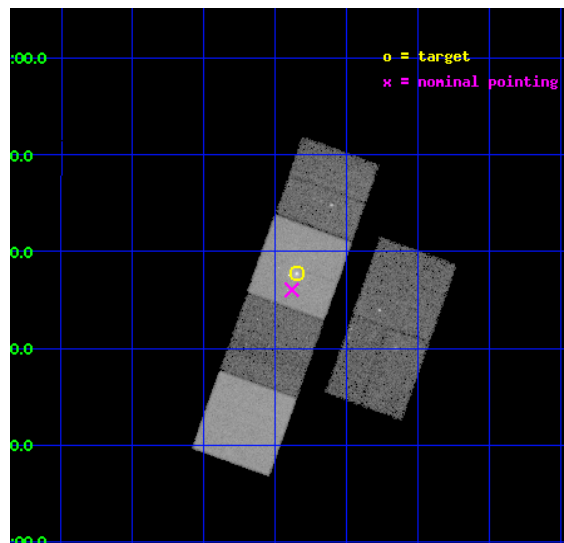
L2 Processing Date : Sep 7 2012

Contents

1	Front	2
2	OBI	3
2.1	OBI	3
2.1.1	Images	3
2.1.2	Bias	3
2.1.3	Parameters	4
2.1.4	Events	4
2.2	Compared Parameters	5
2.3	Aspect	6
2.4	Star Slots	9
2.4.1	Slot 3	9
2.4.2	Slot 4	10
2.4.3	Slot 5	11
2.4.4	Slot 6	12
2.4.5	Slot 7	13
2.5	FID Slots	14
2.5.1	Slot 0	14
2.5.2	Slot 1	15
2.5.3	Slot 2	16
A	Summary	17
A.1	Status	17
A.2	Comments	17

1 Front

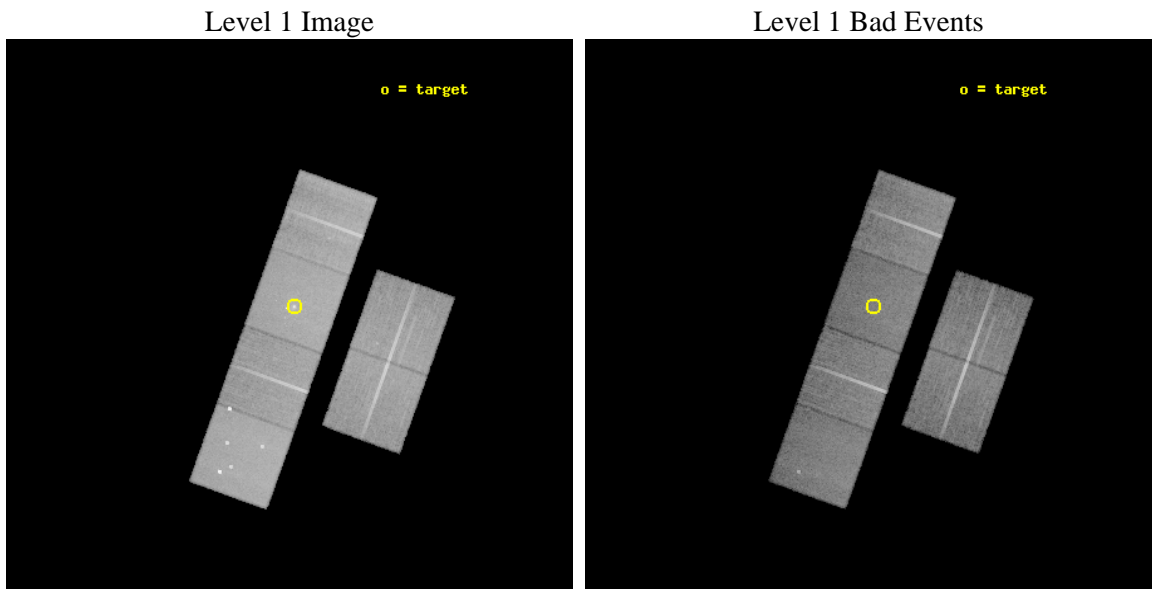
seq_num	800162	Sequence number
obs_id	2223	Observation id
title	THE INTRAGROUP MEDIUM: DISTRIBUTION OF HEAVY ELEMENTS AND INTERACTION WITH RADIO JETS	Proposal title
observer	Dr. Jan Vrtilik	Principal investigator
object	NGC 741 GROUP	Source name
dtcycle	0	
cycle	P	events from which exps? Prim/Second/Both
ra_targ	29.0875	Observer's specified target RA [deg]
dec_targ	5.628944	Observer's specified target Dec [deg]
ra_nom	29.09565198244	Nominal RA [deg]
dec_nom	5.6008621587115	Nominal Dec [deg]
roll_nom	289.69569427549	Nominal Roll [deg]
revision	3	Processing version of data
ontime	30734.844617486	Sum of GTIs [s]
livetime	30345.661508638	Livetime [s]
ontime2	30734.88569741	Sum of GTIs [s]
ontime3	30734.721527413	Sum of GTIs [s]
ontime5	30738.044537738	Sum of GTIs [s]
ontime6	30738.00349775	Sum of GTIs [s]
ontime7	30734.844617486	Sum of GTIs [s]
ontime8	30731.43938756	Sum of GTIs [s]
l2events	295126	Number of level 2 events



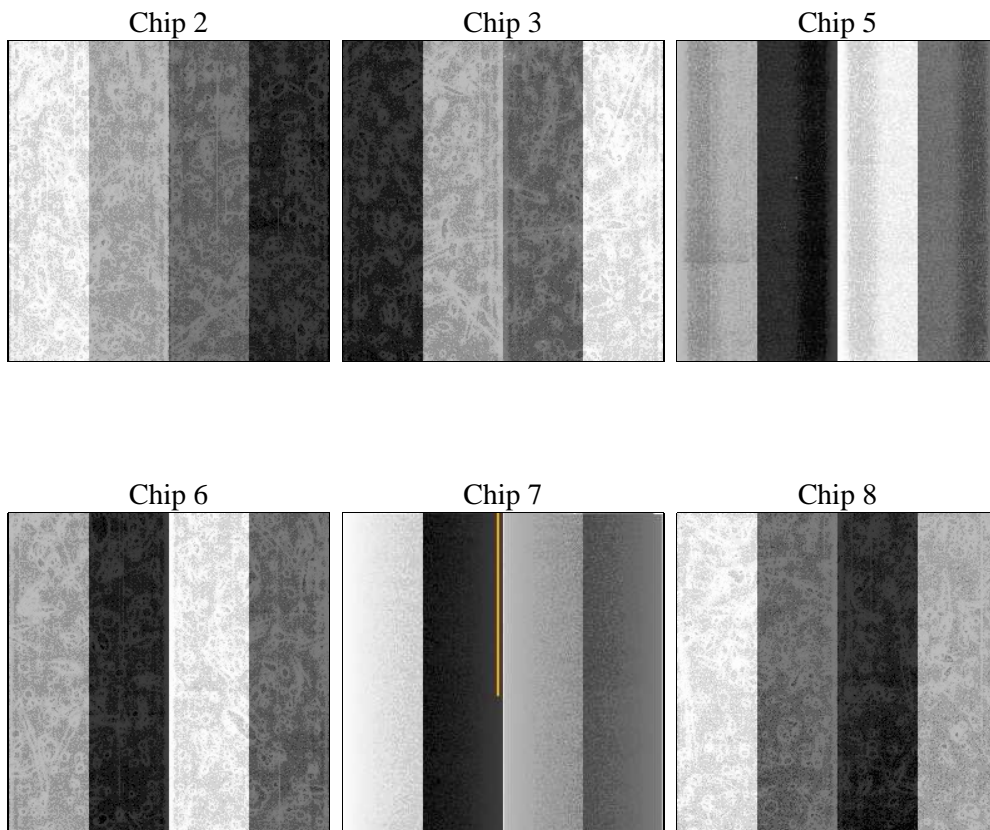
2 OBI

2.1 OBI

2.1.1 Images



2.1.2 Bias



2.1.3 Parameters

obi_num	0	Obi number	sched_exp_time	31000.000000	[s] Scheduled observation exposure time
ascdsver	8.4.5	Processing system revision	ontime	30734.844617486	Sum of GTIs [s]
caldbver	4.5.1.1	 	ontime2	30734.88569741	Sum of GTIs [s]
date	2012-09-07T06:21:53	Date and time of file creation	ontime3	30734.721527413	Sum of GTIs [s]
revision	3	Processing version of data	ontime5	30738.044537738	Sum of GTIs [s]
			ontime6	30738.00349775	Sum of GTIs [s]
			ontime7	30734.844617486	Sum of GTIs [s]
			ontime8	30731.43938756	Sum of GTIs [s]
			l1events	1304651	Number of level 1 events

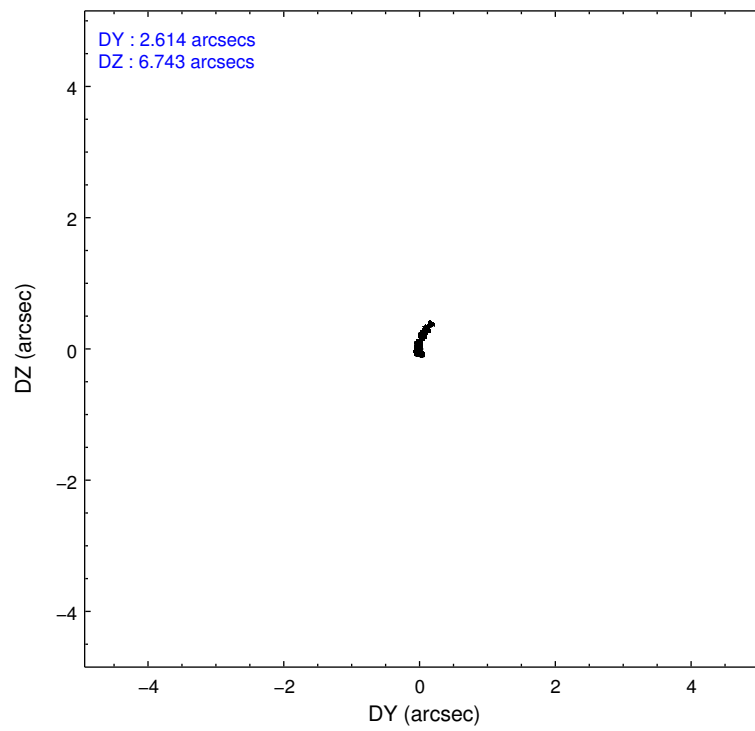
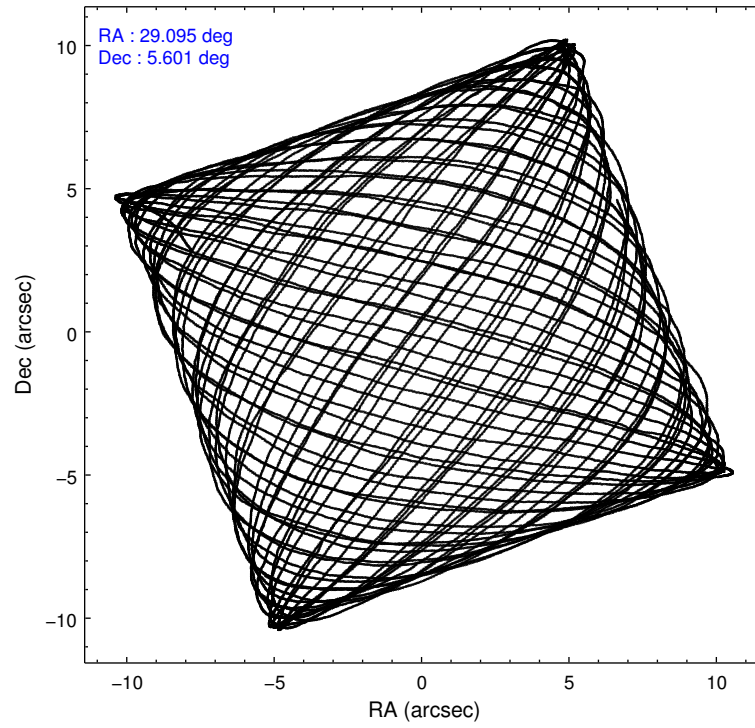
2.1.4 Events

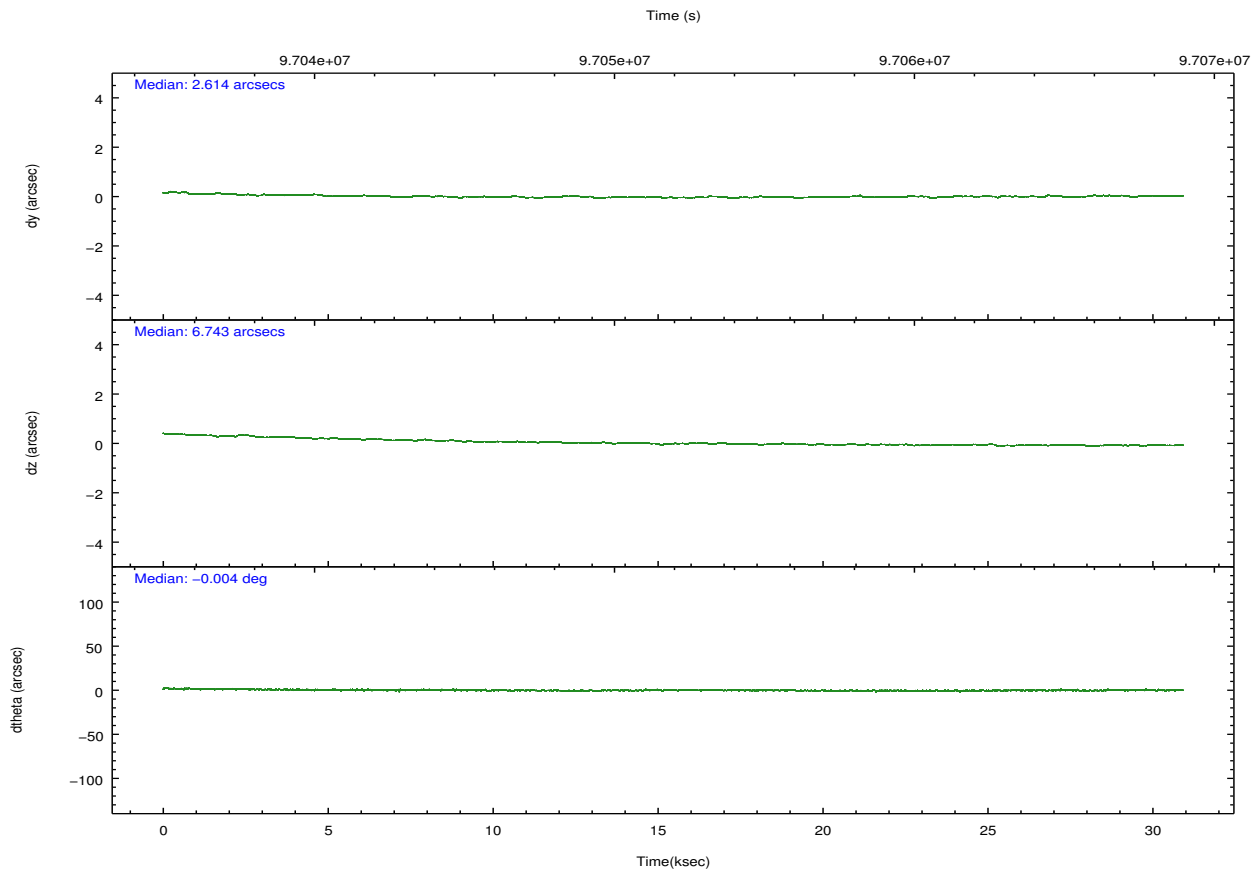
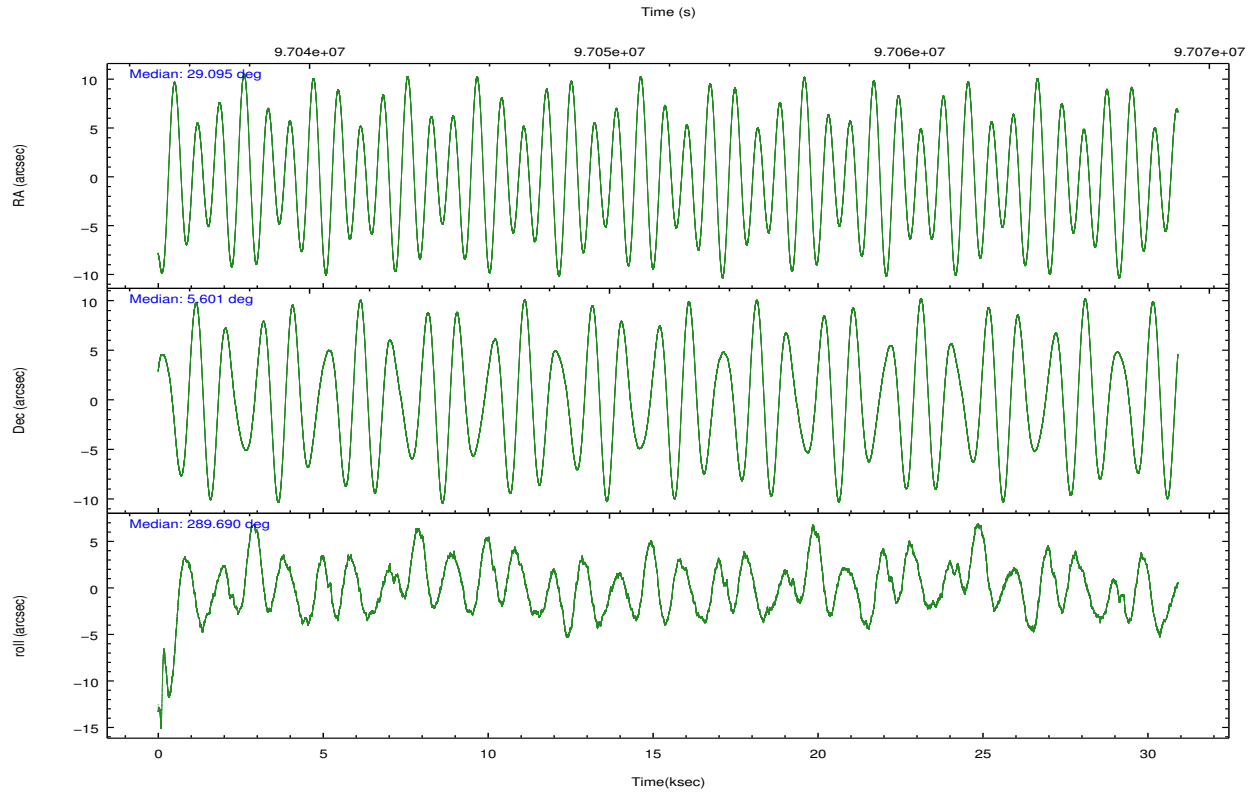
	ccd 2	ccd 3	ccd 5	ccd 6	ccd 7	ccd 8		ccd 2	ccd 3	ccd 5	ccd 6	ccd 7	ccd 8
level 1 events	183184	181678	265218	187619	245074	241878	grade 0 events	9747	9660	23518	10009	13453	18182
rejected events	161038	159998	138364	164402	135944	187930		5%	5%	8%	5%	5%	7%
rejected %	87%	88%	52%	87%	55%	77%	grade 1 events	80	80	812	77	206	165
								0%	0%	0%	0%	0%	0%
							grade 2 events	4830	4265	33646	4707	22284	10510
								2%	2%	12%	2%	9%	4%
							grade 3 events	1967	1934	5292	2139	10290	6299
								1%	1%	1%	1%	4%	2%
							grade 4 events	1899	2009	4768	2147	10143	5794
								1%	1%	1%	1%	4%	2%
							grade 5 events	6327	6871	19167	7584	22104	9788
								3%	3%	7%	4%	9%	4%
							grade 6 events	3705	3822	59656	4220	52978	13167
								2%	2%	22%	2%	21%	5%
							grade 7 events	154629	153037	118359	156736	113616	177973
								84%	84%	44%	83%	46%	73%

2.2 Compared Parameters

Parameter	Planned	Actual	Parameter	Planned	Actual
Instrument	ACIS	ACIS	Obspar format version number	7	7
Detector	ACIS-235678	ACIS-235678	Obspar file type	PREDICTED	ACTUAL
Grating	NONE	NONE	Obspar update status	NONE	UPDATED
Data mode	FAINT	FAINT	Number of optional ACIS chips dropped	0	0
Observation mode	POINTING	POINTING	On-chip summing requested	N	N
[deg] Pointing RA	29.074570	29.09565198243977	Subarray requested	NONE	NONE
[deg] Pointing Dec	5.618359	5.600862158711544	Alternating exposures requested	N	N
[deg] Pointing Roll	289.541132	289.6956942754931	[s] Primary exposure time	0.000000	3.2
[mm] SIM focus pos	-0.684267	-0.6828225247311905			
[mm] SIM defocus	0	0.001444936568705701			
[mm] SIM translation stage pos	-190.132523	-190.1425803651734			
[mm] SIM translation stage offset	0	0.01005778216563158			
[s] Observation start time (MET)	97036406.184000	97036123.50368799			
Observation start date	2001-01-28T02:32:22	2001-01-28T02:28:43			
[s] Observation end time (MET)	97067406.184000	97067968.204914			
Observation end date	2001-01-28T11:09:02	2001-01-28T11:19:28			
Read mode	TIMED	TIMED			

2.3 Aspect



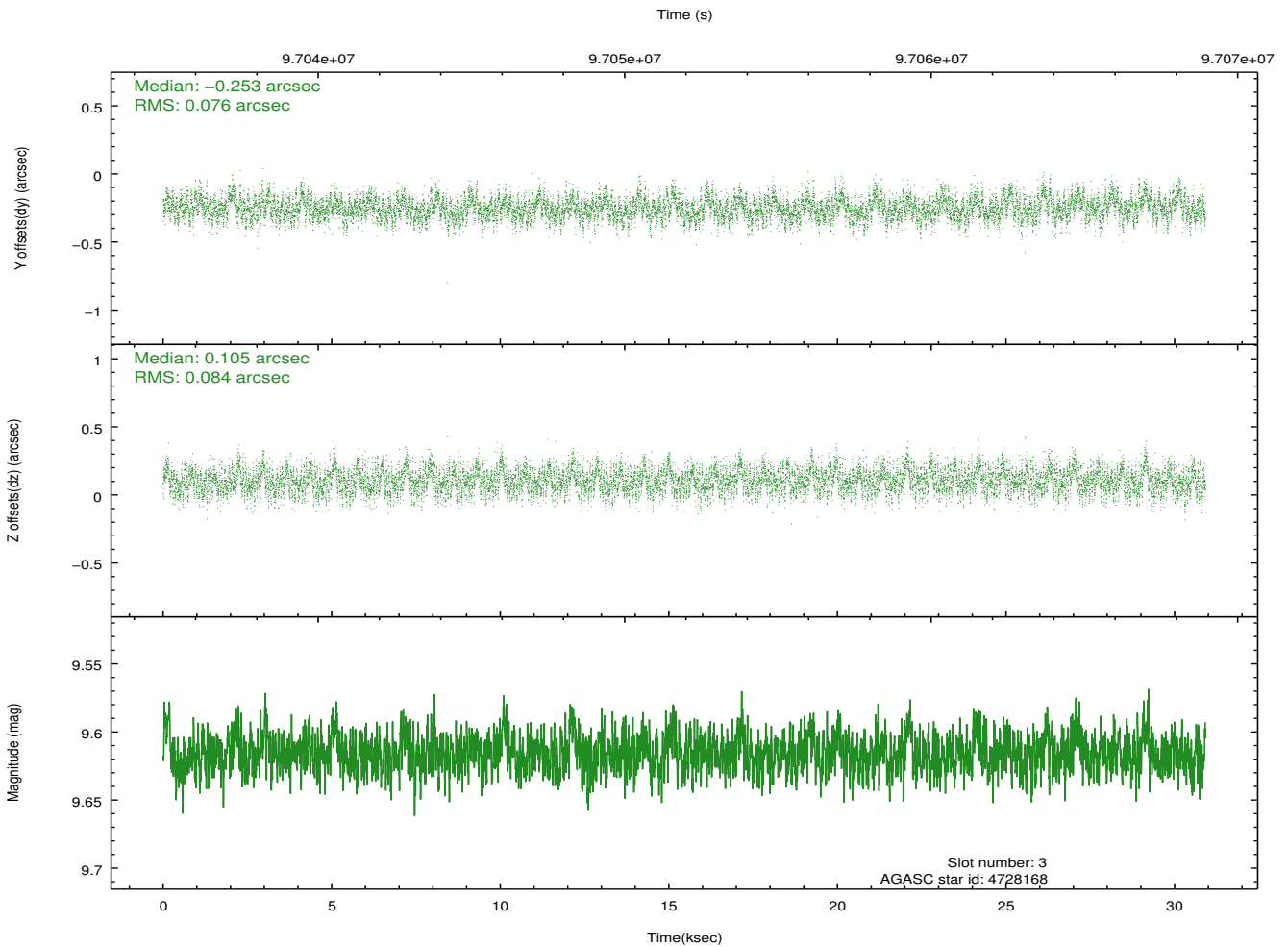
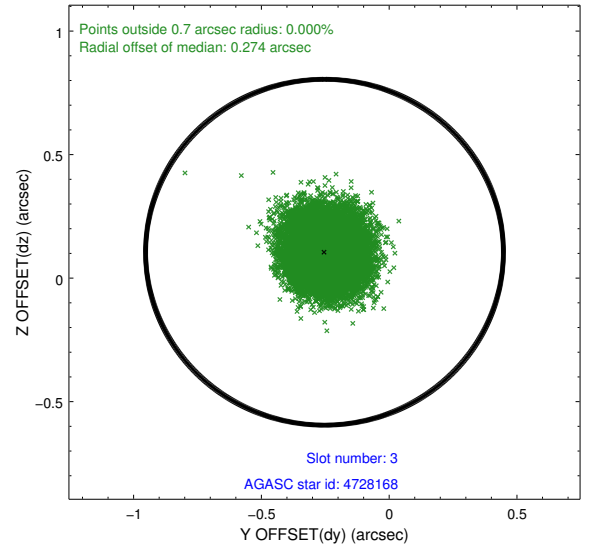
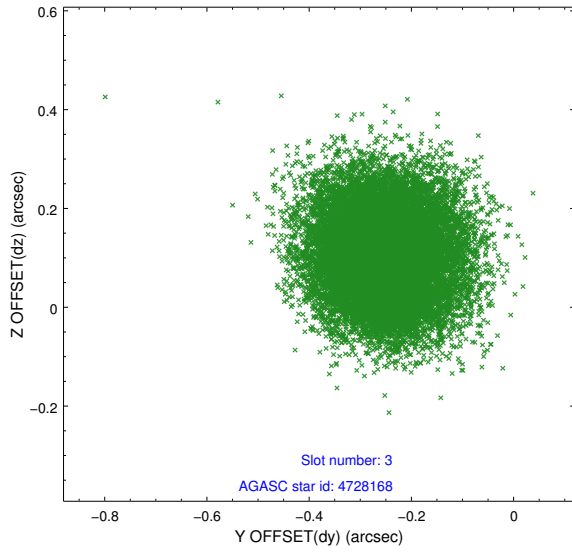


Slot Statistics

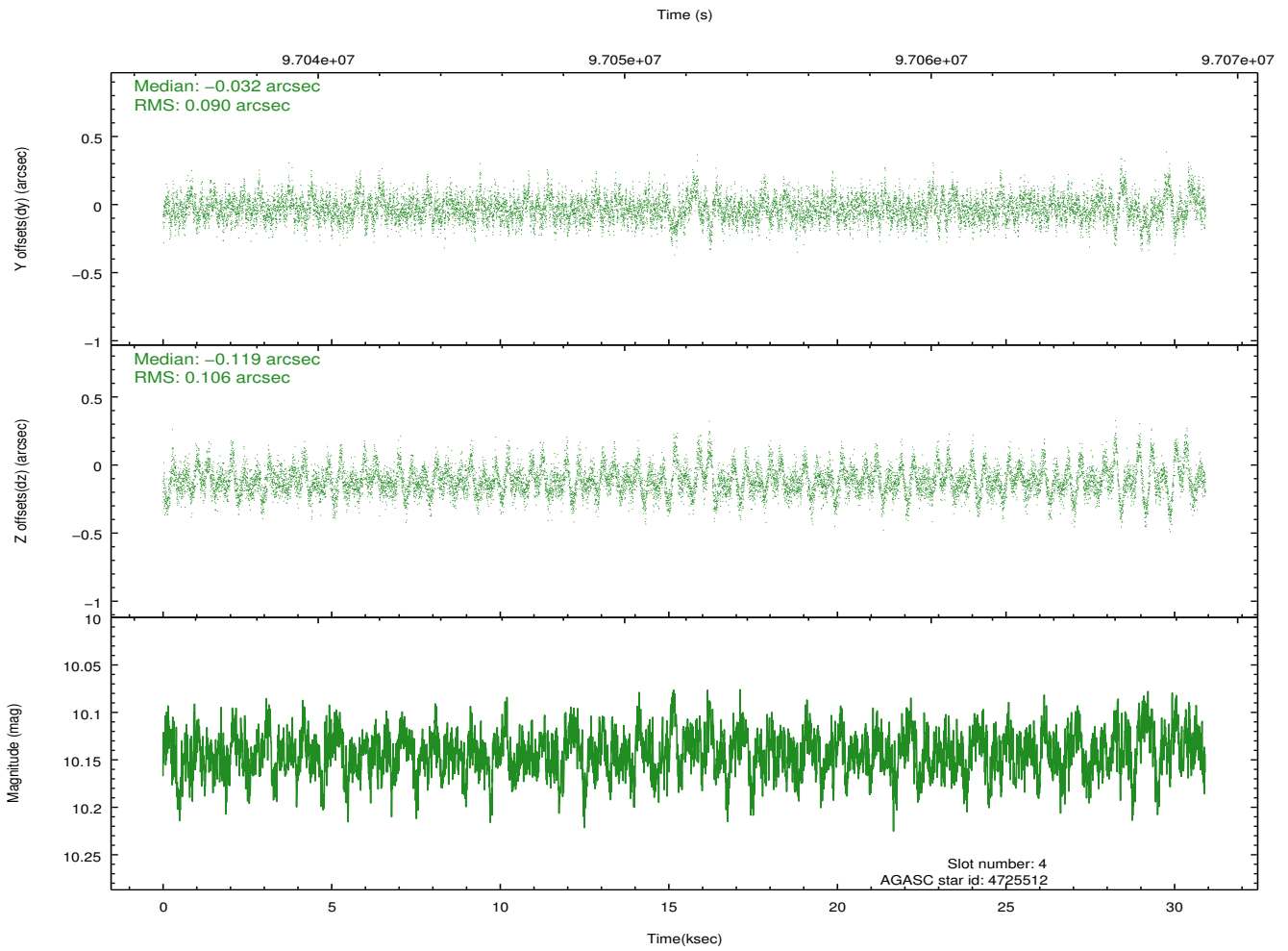
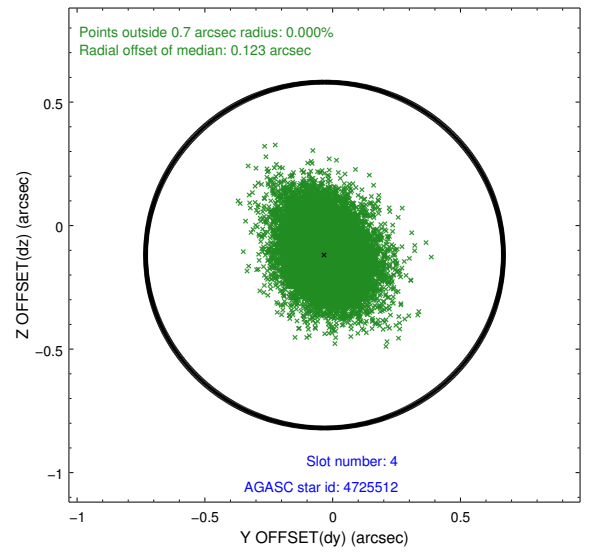
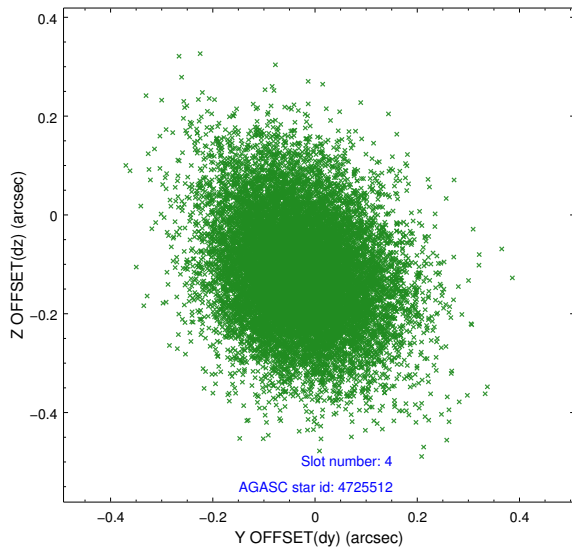
slot	status	id	mag	n_pts	med_dy	med_dz	dr1	dr2	ra	dec	mean_y	mean_z
0	FID	ACIS-S-2	7.11	7538	-0.019	-0.000	0.012	0.025	0.000000	0.000000	-755.26	-1727.90
1	FID	ACIS-S-4	7.20	7539	-0.035	0.009	0.014	0.035	0.000000	0.000000	2157.95	180.53
2	FID	ACIS-S-5	7.24	7539	0.024	-0.001	0.011	0.021	0.000000	0.000000	-1807.99	174.26
3	GUIDE	4728168	9.62	15069	-0.253	0.105	0.123	0.191	29.225062	6.350389	-2303.15	1389.35
4	GUIDE	4725512	10.14	15063	-0.032	-0.119	0.145	0.248	29.065751	5.887059	-921.63	294.16
5	GUIDE	4724152	10.66	15070	0.021	-0.129	0.187	0.301	28.780262	5.692828	-604.76	-903.50
6	GUIDE	4728496	10.02	15064	0.012	-0.017	0.135	0.242	29.187065	5.994615	-1141.18	832.94
7	GUIDE	4726352	10.91	14987	0.241	0.156	0.175	0.280	29.848789	5.400599	1665.97	2354.30

2.4 Star Slots

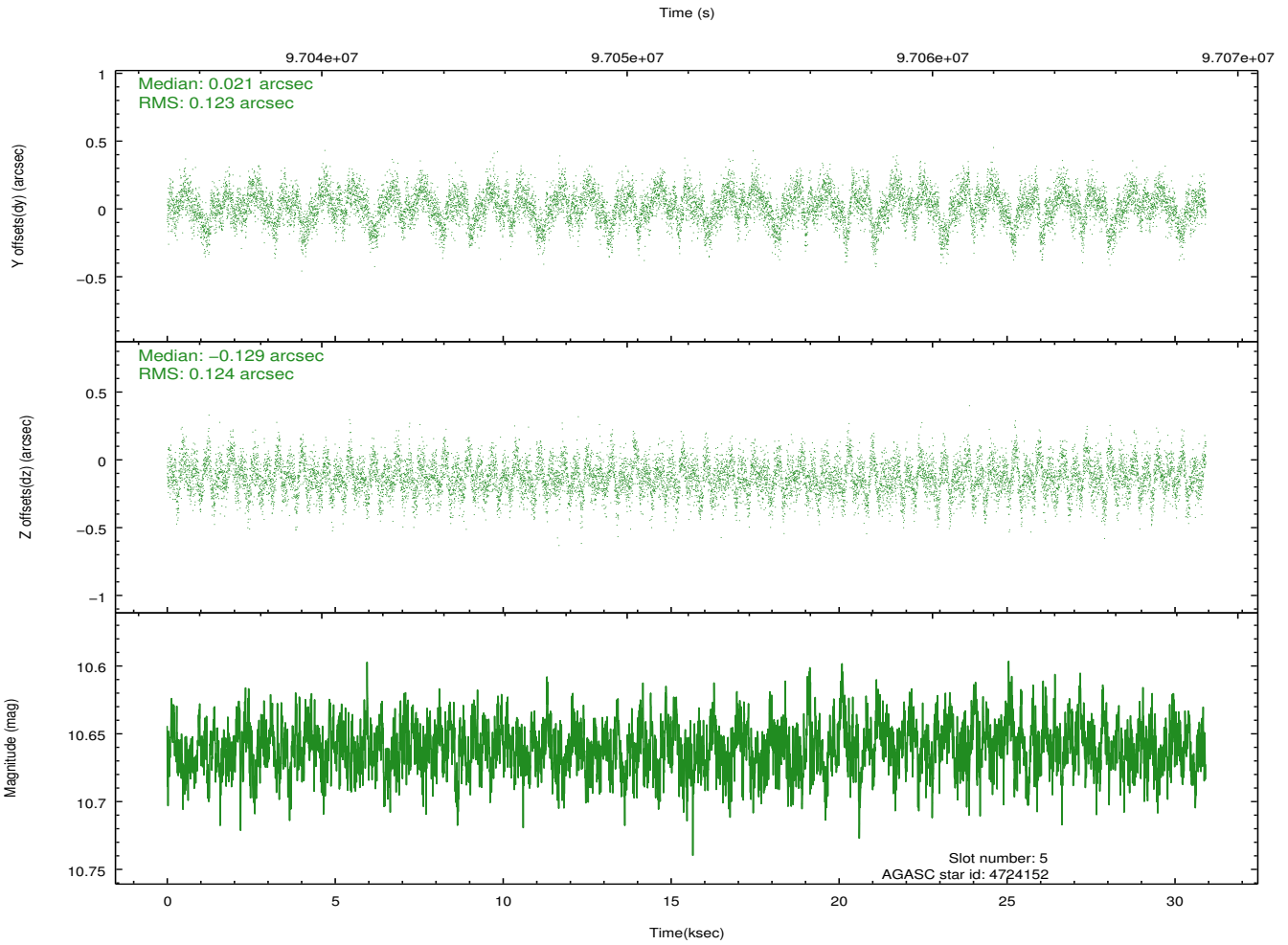
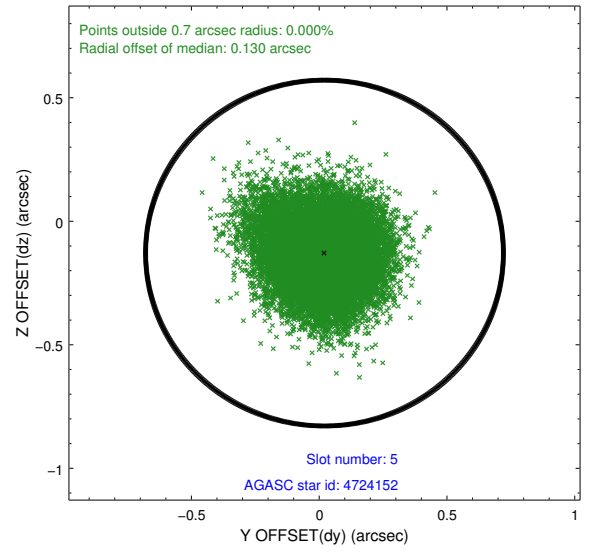
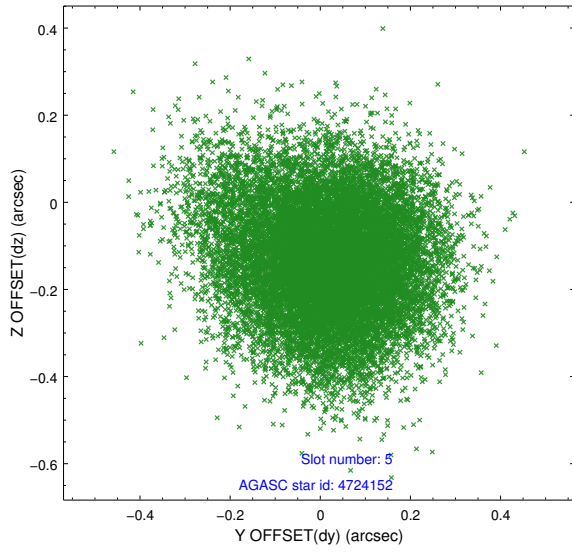
2.4.1 Slot 3



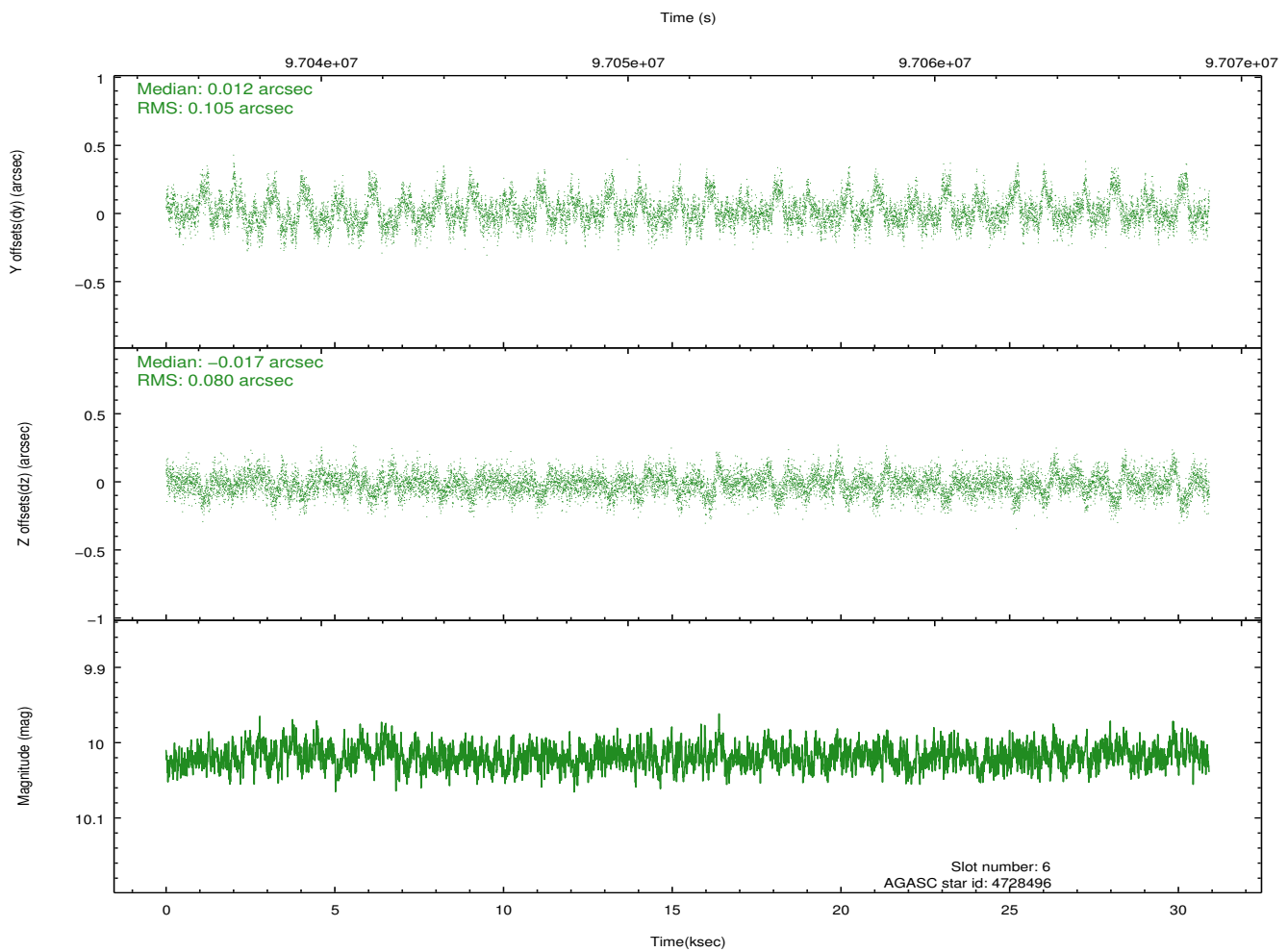
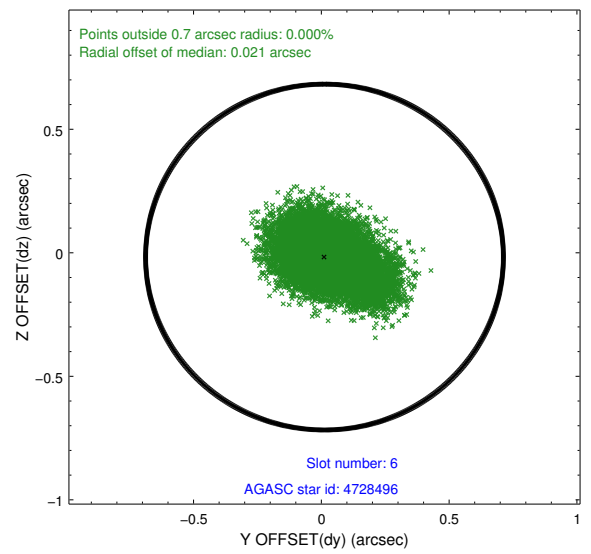
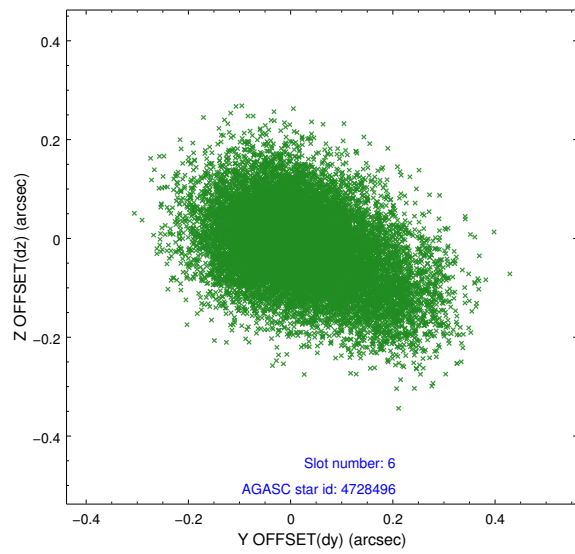
2.4.2 Slot 4



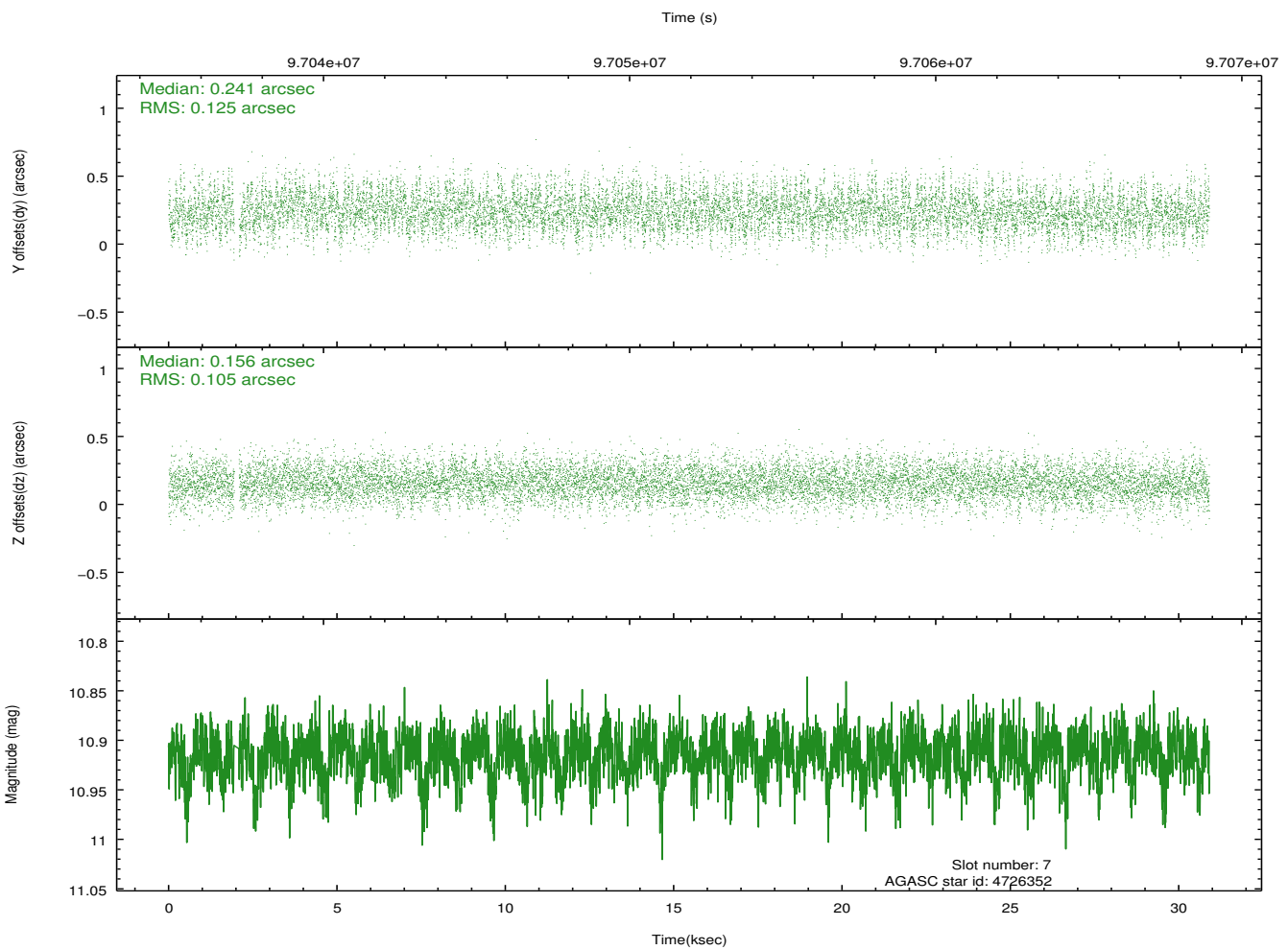
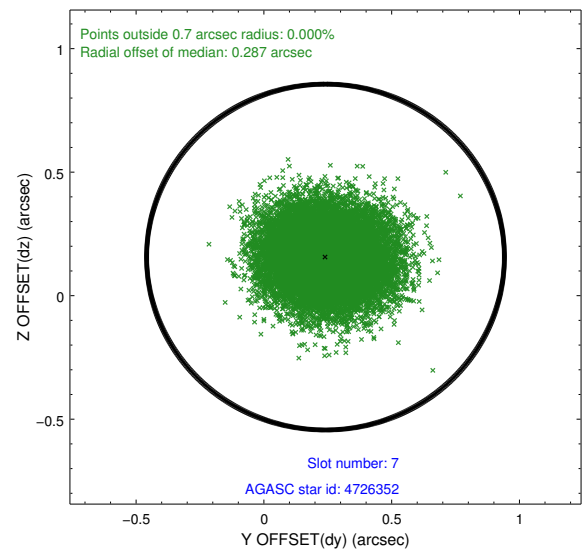
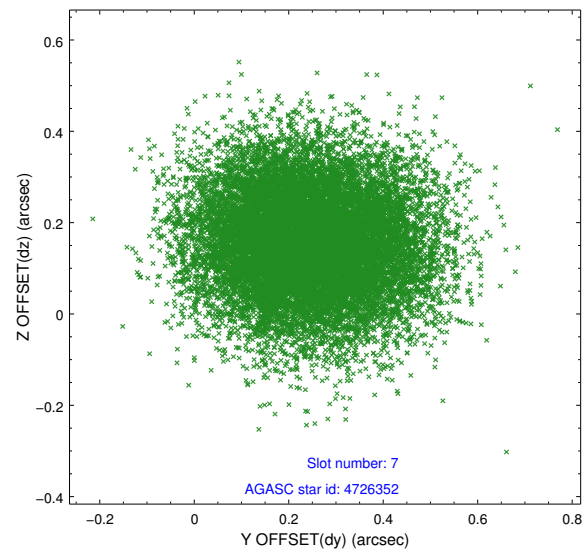
2.4.3 Slot 5



2.4.4 Slot 6

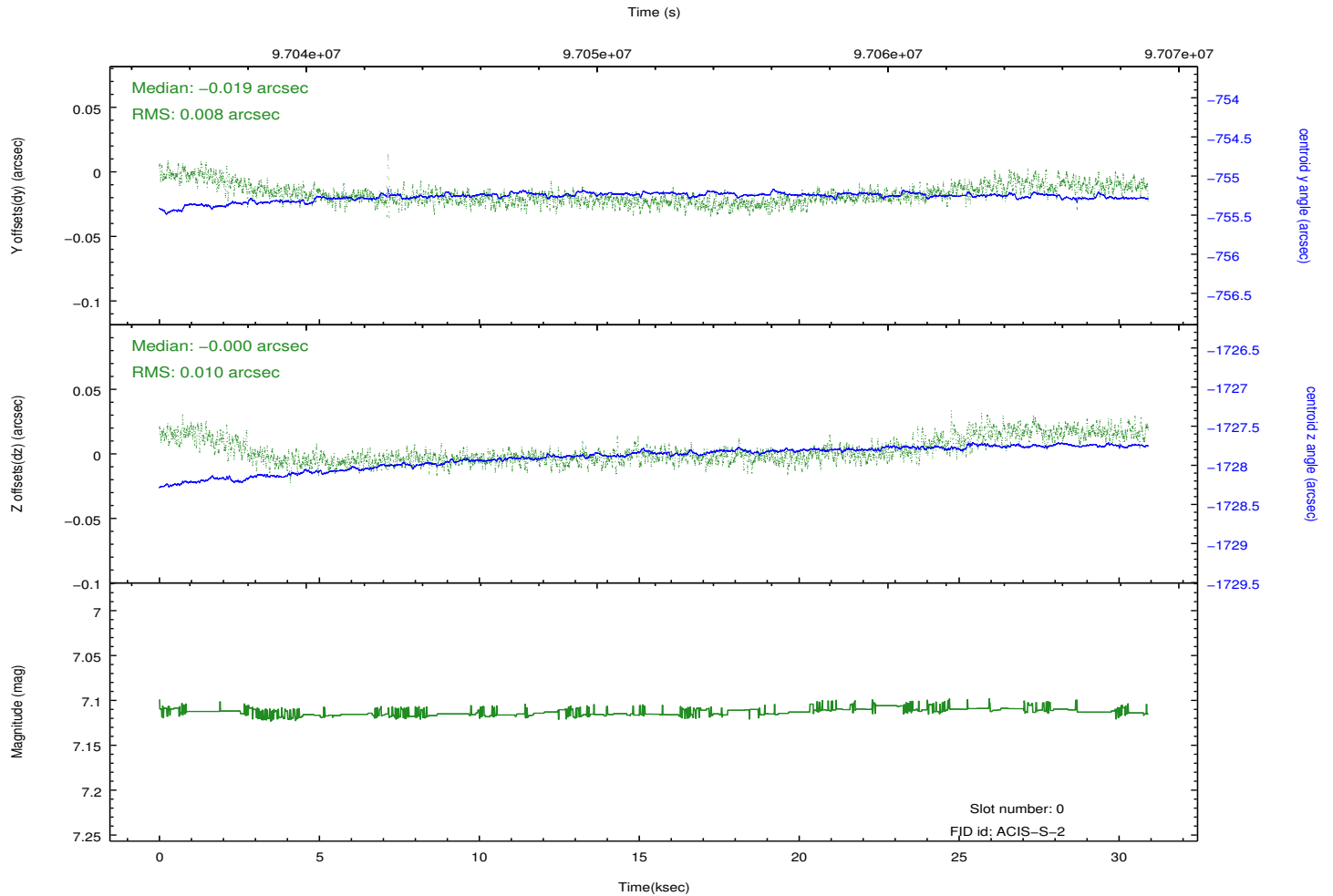
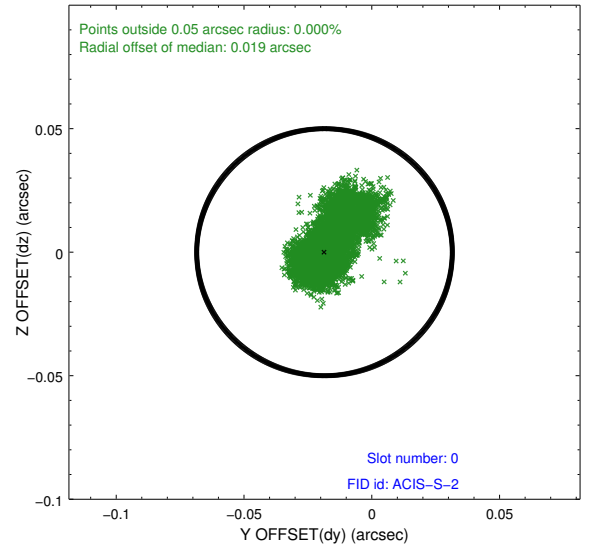
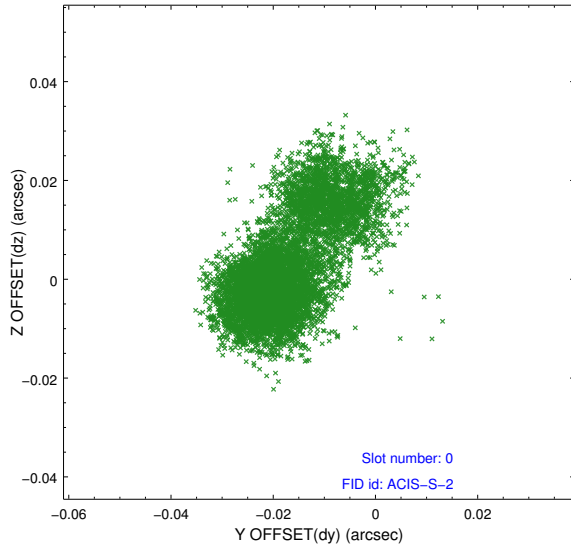


2.4.5 Slot 7

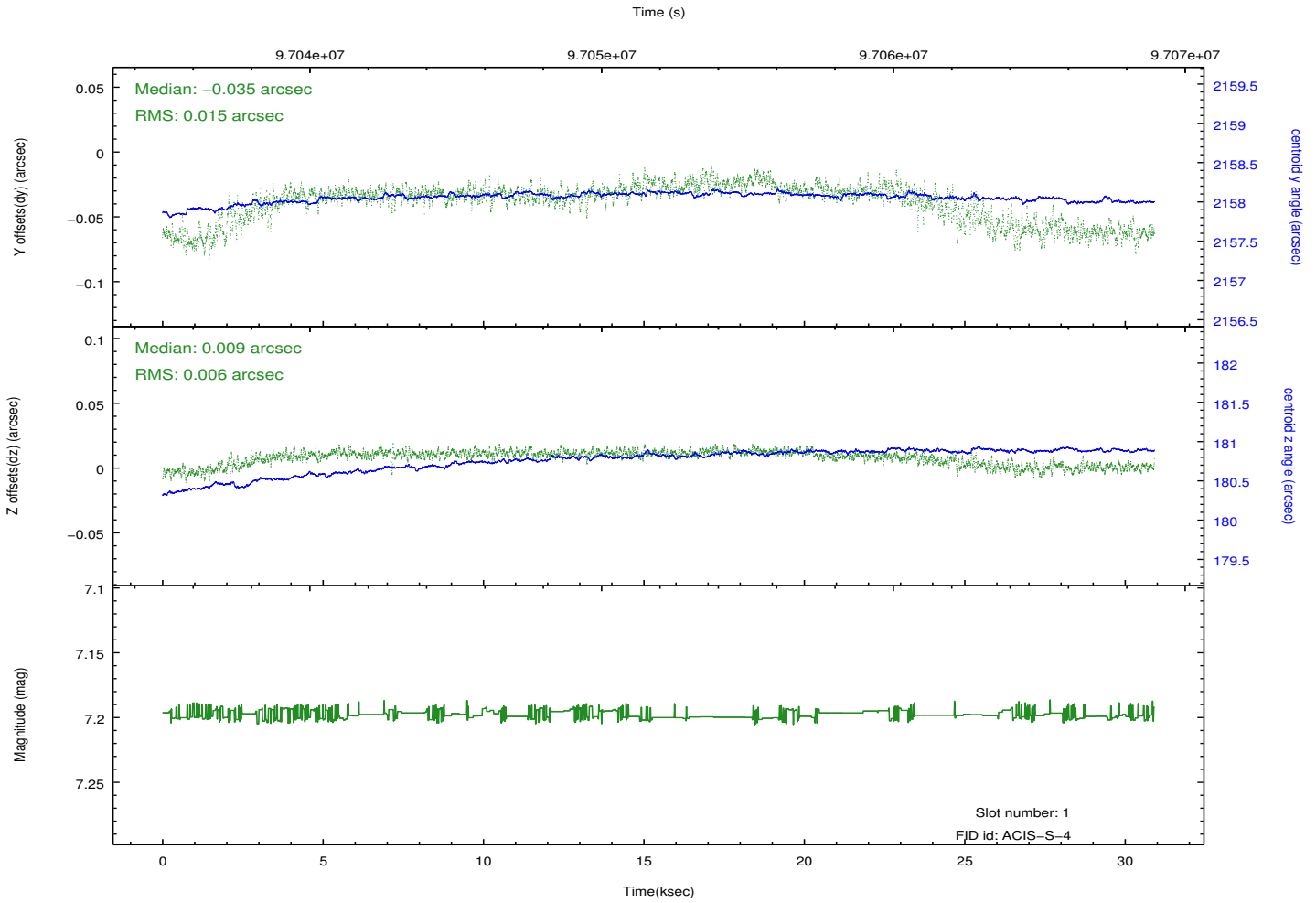
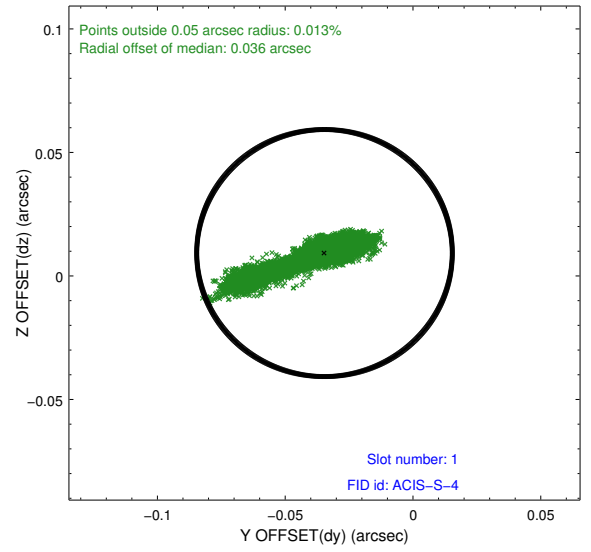
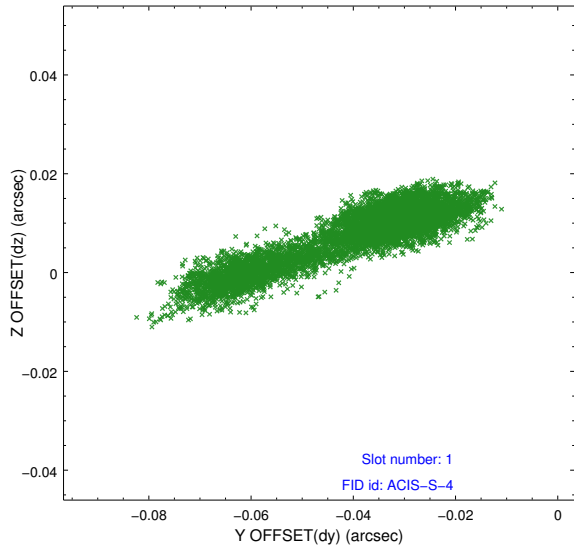


2.5 FID Slots

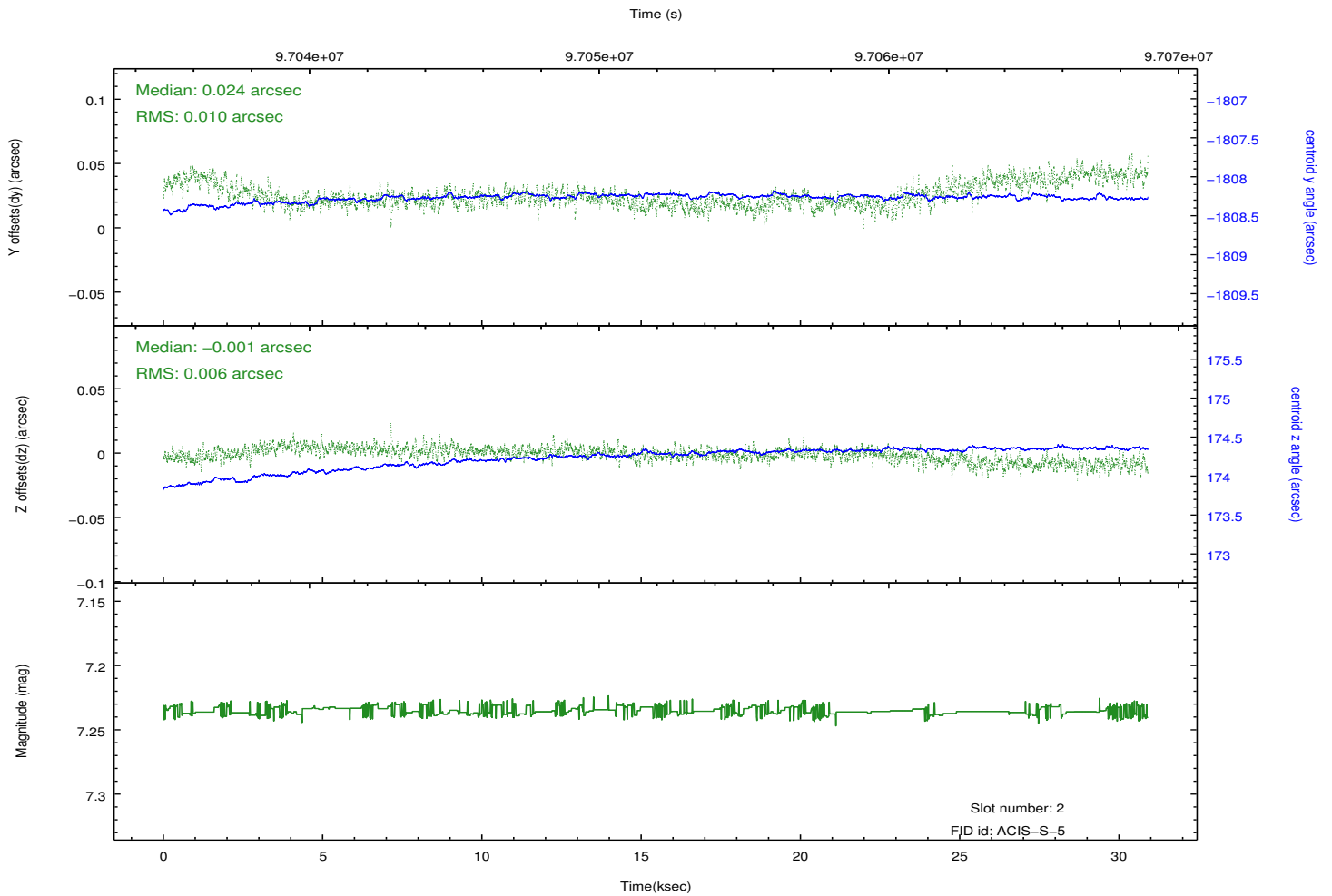
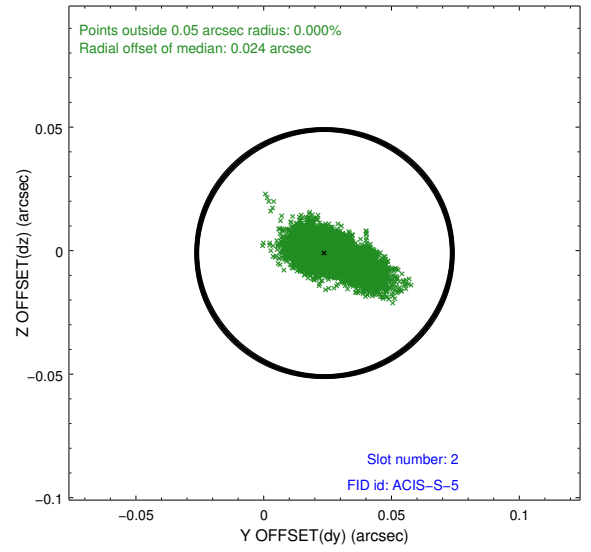
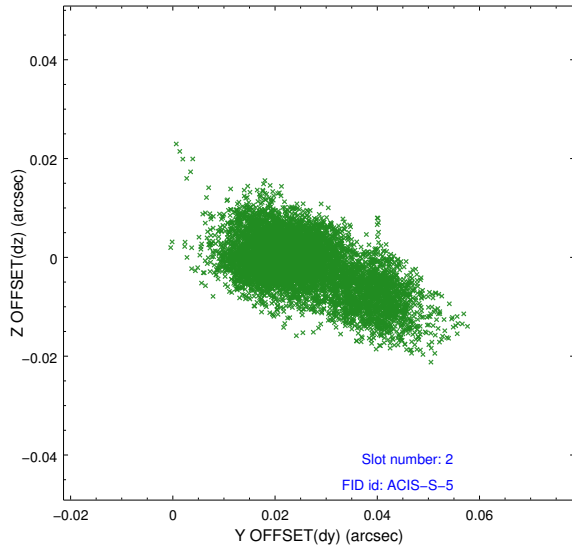
2.5.1 Slot 0



2.5.2 Slot 1



2.5.3 Slot 2



A Summary

A.1 Status

V&V Scientist	Jen Lauer
V&V Date (YYYY-MM-DD)	2012.09.17
V&V Edition	1
V&V Disposition and Status	OK
V&V Charge Time	30.736

A.2 Comments