

V&V Reference Report

L2 ASCDS Version : 8.4.5

Observation 2253 - L2 Version 3
Chandra X-Ray Center

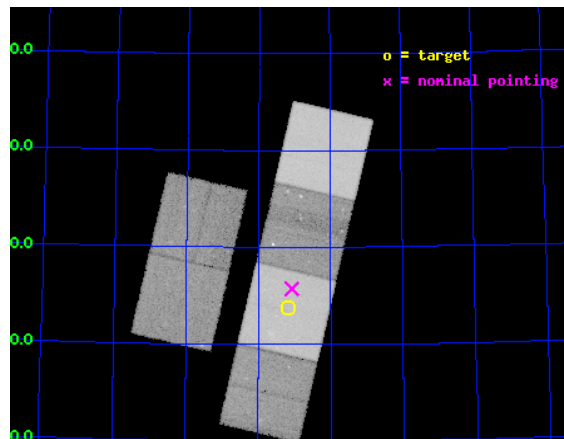
L2 Processing Date : Sep 30 2012

Contents

1 Front	2
2 OBI	3
2.1 OBI	3
2.1.1 Images	3
2.1.2 Bias	3
2.1.3 Parameters	4
2.1.4 Events	4
2.2 Compared Parameters	5
2.3 Aspect	6
2.4 Star Slots	9
2.4.1 Slot 3	9
2.4.2 Slot 4	10
2.4.3 Slot 5	11
2.4.4 Slot 6	12
2.4.5 Slot 7	13
2.5 FID Slots	14
2.5.1 Slot 0	14
2.5.2 Slot 1	15
2.5.3 Slot 2	16
A Summary	17
A.1 Status	17
A.2 Comments	17

1 Front

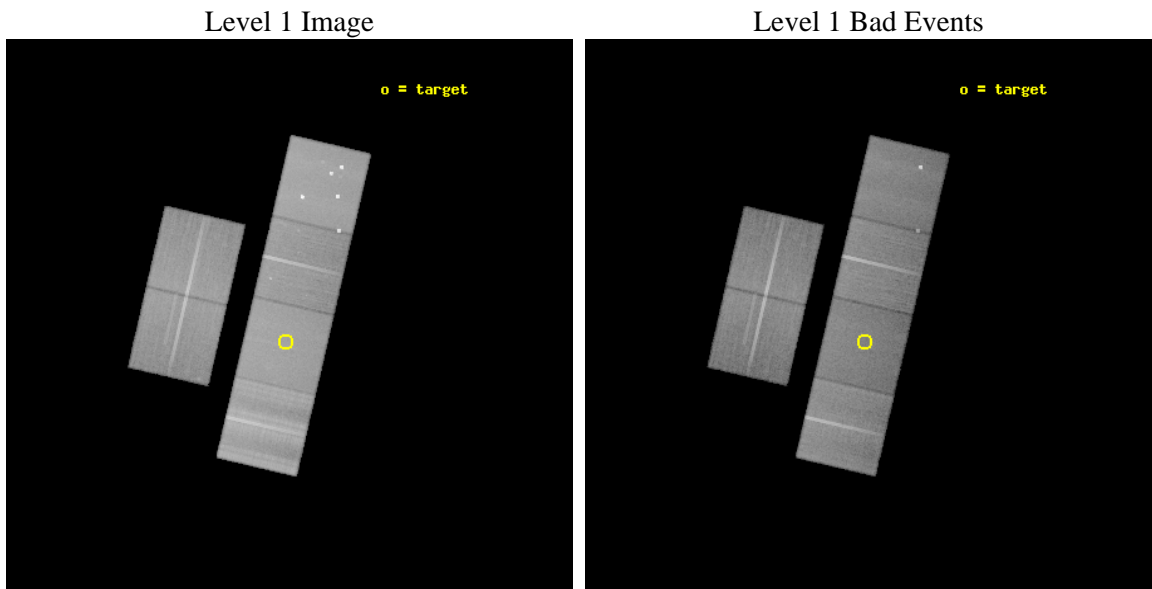
seq_num	900080	Sequence number
obs_id	2253	Observation id
title	DIFFUSE X-RAY EMISSION FROM THE MISSING BARYONS IN THE UNIVERSE	Pr
observer	Dr. Joel Bregman	Principal investigator
object	CHVC125	Source name
dtcycle	0	
cycle	P	events from which exps? Prim/Second/Both
ra_targ	187.291667	Observer's specified target RA [deg]
dec_targ	75.395833	Observer's specified target Dec [deg]
ra_nom	187.26863028238	Nominal RA [deg]
dec_nom	75.428601537201	Nominal Dec [deg]
roll_nom	103.11884374792	Nominal Roll [deg]
revision	3	Processing version of data
ontime	48009.600044698	Sum of GTIs [s]
livetime	47401.673581021	Livetime [s]
ontime2	47999.877113998	Sum of GTIs [s]
ontime3	48006.35910435	Sum of GTIs [s]
ontime5	48009.600044698	Sum of GTIs [s]
ontime6	48009.600044698	Sum of GTIs [s]
ontime7	48009.600044698	Sum of GTIs [s]
ontime8	47999.877143949	Sum of GTIs [s]
l2events	564428	Number of level 2 events



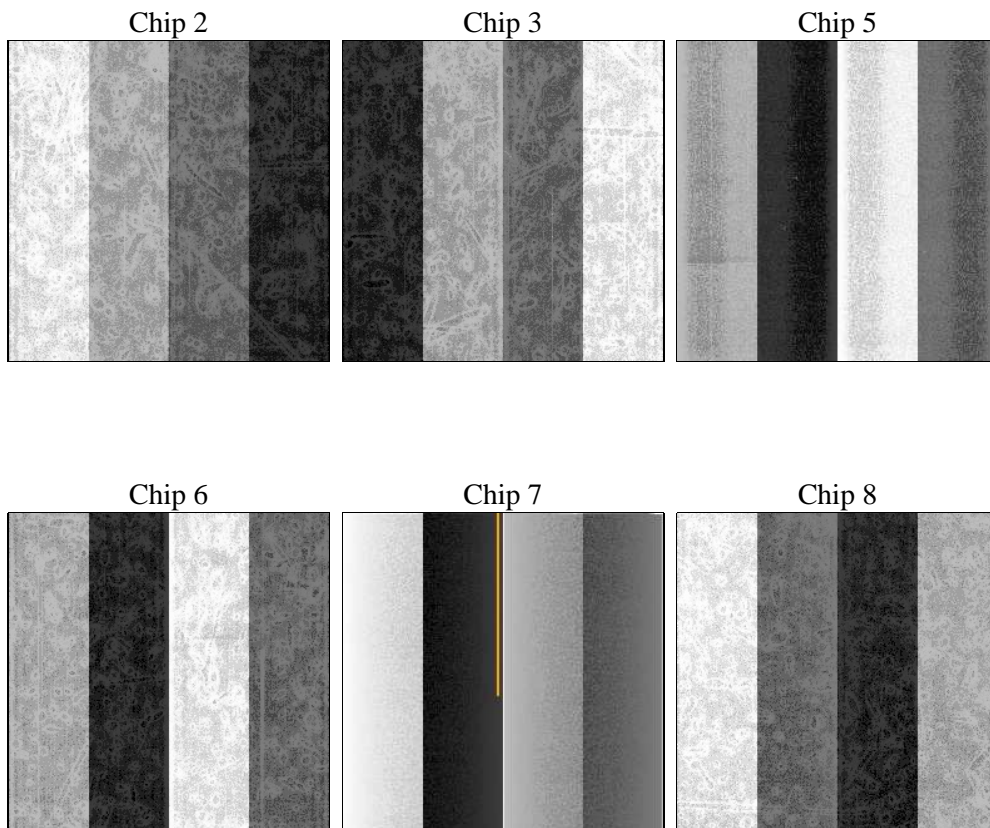
2 OBI

2.1 OBI

2.1.1 Images



2.1.2 Bias



2.1.3 Parameters

obi_num	1	Obi number	sched_exp_time	47869.198000	[s] Scheduled observation exposure time
ascdsver	8.4.5	Processing system revision	ontime	48009.600044698	Sum of GTIs [s]
caldbver	4.5.2	 	ontime2	47999.877113998	Sum of GTIs [s]
date	2012-09-30T06:15:21	Date and time of file creation	ontime3	48006.35910435	Sum of GTIs [s]
revision	3	Processing version of data	ontime5	48009.600044698	Sum of GTIs [s]
			ontime6	48009.600044698	Sum of GTIs [s]
			ontime7	48009.600044698	Sum of GTIs [s]
			ontime8	47999.877143949	Sum of GTIs [s]
			l1events	2564531	Number of level 1 events

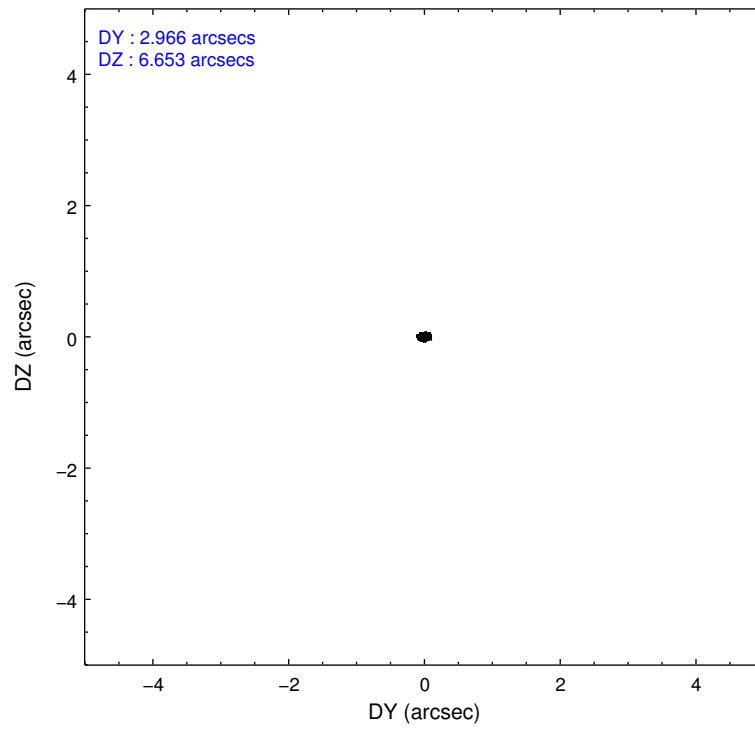
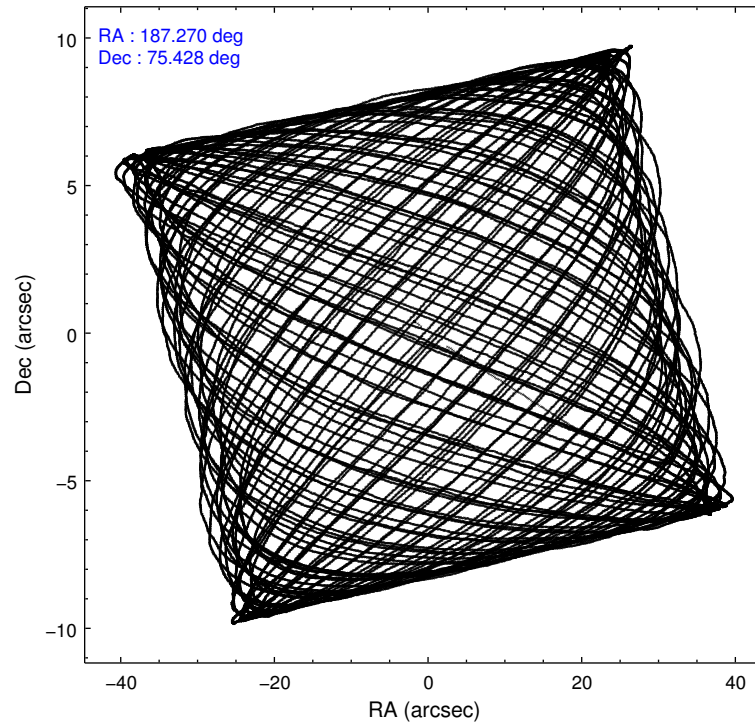
2.1.4 Events

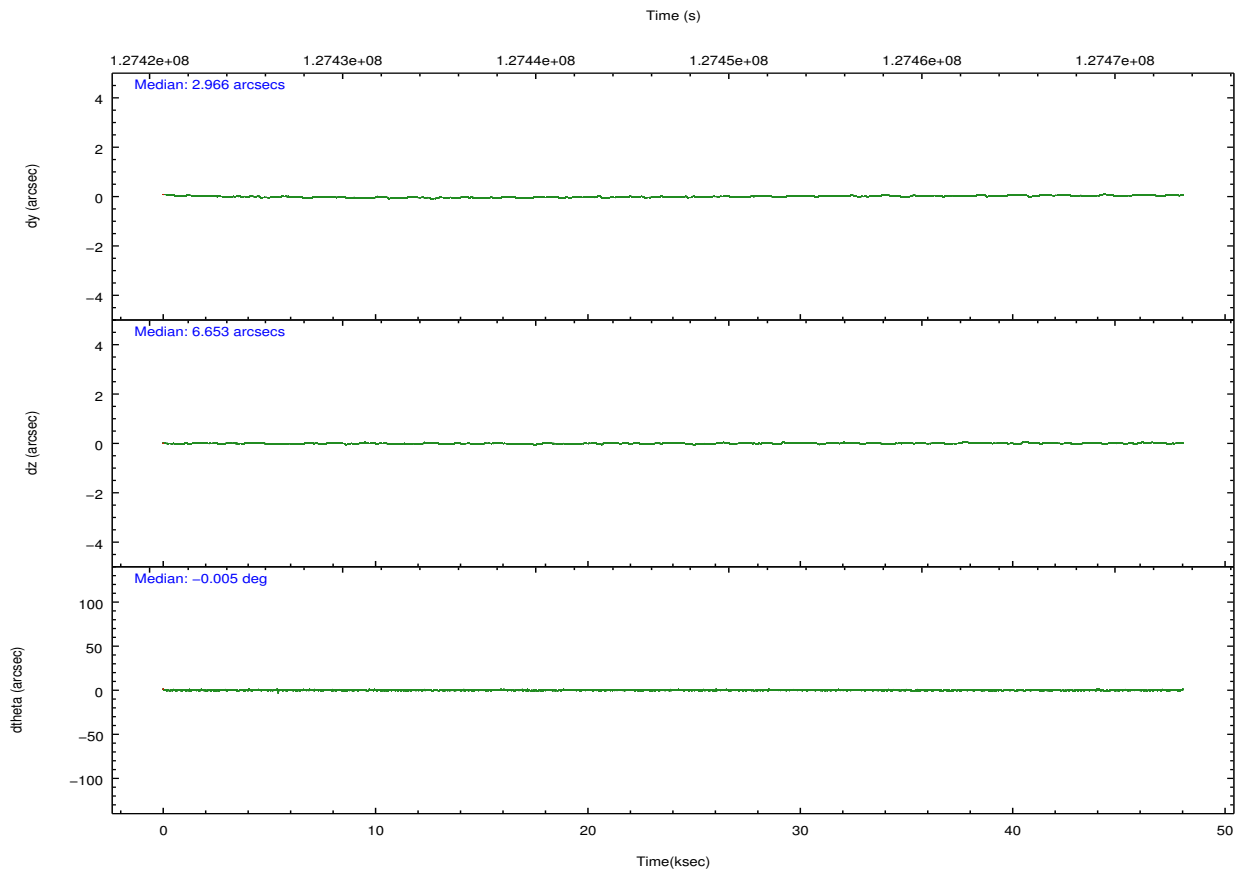
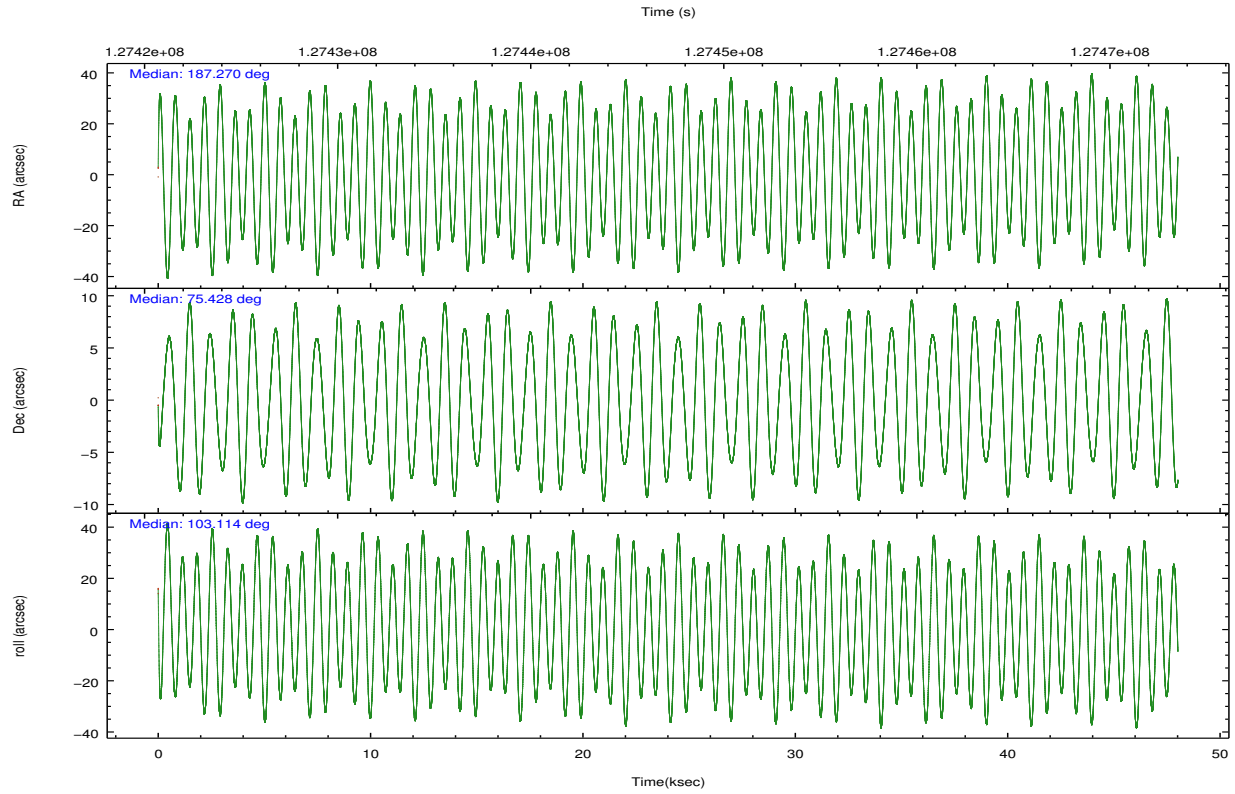
	ccd 2	ccd 3	ccd 5	ccd 6	ccd 7	ccd 8		ccd 2	ccd 3	ccd 5	ccd 6	ccd 7	ccd 8
level 1 events	362973	335669	525926	353796	435185	550982	grade 0 events	22693	20588	56690	22909	19945	68236
rejected events	313748	289321	264525	303209	245947	347861		6%	6%	10%	6%	4%	12%
rejected %	86%	86%	50%	85%	56%	63%	grade 1 events	178	190	1067	171	464	513
								0%	0%	0%	0%	0%	0%
							grade 2 events	12181	11140	76024	12100	39377	35199
								3%	3%	14%	3%	9%	6%
							grade 3 events	3557	3751	10750	3997	18063	32318
								0%	1%	2%	1%	4%	5%
							grade 4 events	4040	3743	9441	3827	17934	28682
								1%	1%	1%	1%	4%	5%
							grade 5 events	10838	11890	34507	13042	38678	18375
								2%	3%	6%	3%	8%	3%
							grade 6 events	8678	8903	117627	9623	101126	46464
								2%	2%	22%	2%	23%	8%
							grade 7 events	300808	275464	219820	288127	199598	321195
								82%	82%	41%	81%	45%	58%

2.2 Compared Parameters

Parameter	Planned	Actual	Parameter	Planned	Actual
Instrument	ACIS	ACIS	Obspar format version number	7	7
Detector	ACIS-235678	ACIS-235678	Obspar file type	PREDICTED	ACTUAL
Grating	NONE	NONE	Obspar update status	NONE	UPDATED
Data mode	VFAINT	VFAINT	Number of optional ACIS chips dropped	0	0
Observation mode	POINTING	POINTING	On-chip summing requested	N	N
[deg] Pointing RA	187.343553	187.2686302823824	Subarray requested	NONE	NONE
[deg] Pointing Dec	75.408899	75.42860153720063	Alternating exposures requested	N	N
[deg] Pointing Roll	102.889702	103.118843747923	[s] Primary exposure time	0.000000	3.2
[mm] SIM focus pos	-0.684267	-0.6828225247311905			
[mm] SIM defocus	0	0.001444936568705701			
[mm] SIM translation stage pos	-190.132523	-190.1425803651734			
[mm] SIM translation stage offset	0	0.01005778216563158			
[s] Observation start time (MET)	127423250.184000	127421239.55971			
Observation start date	2002-01-14T19:19:46	2002-01-14T18:47:19			
[s] Observation end time (MET)	127471120.184000	127471434.32423			
Observation end date	2002-01-15T08:37:36	2002-01-15T08:43:54			
Read mode	TIMED	TIMED			

2.3 Aspect



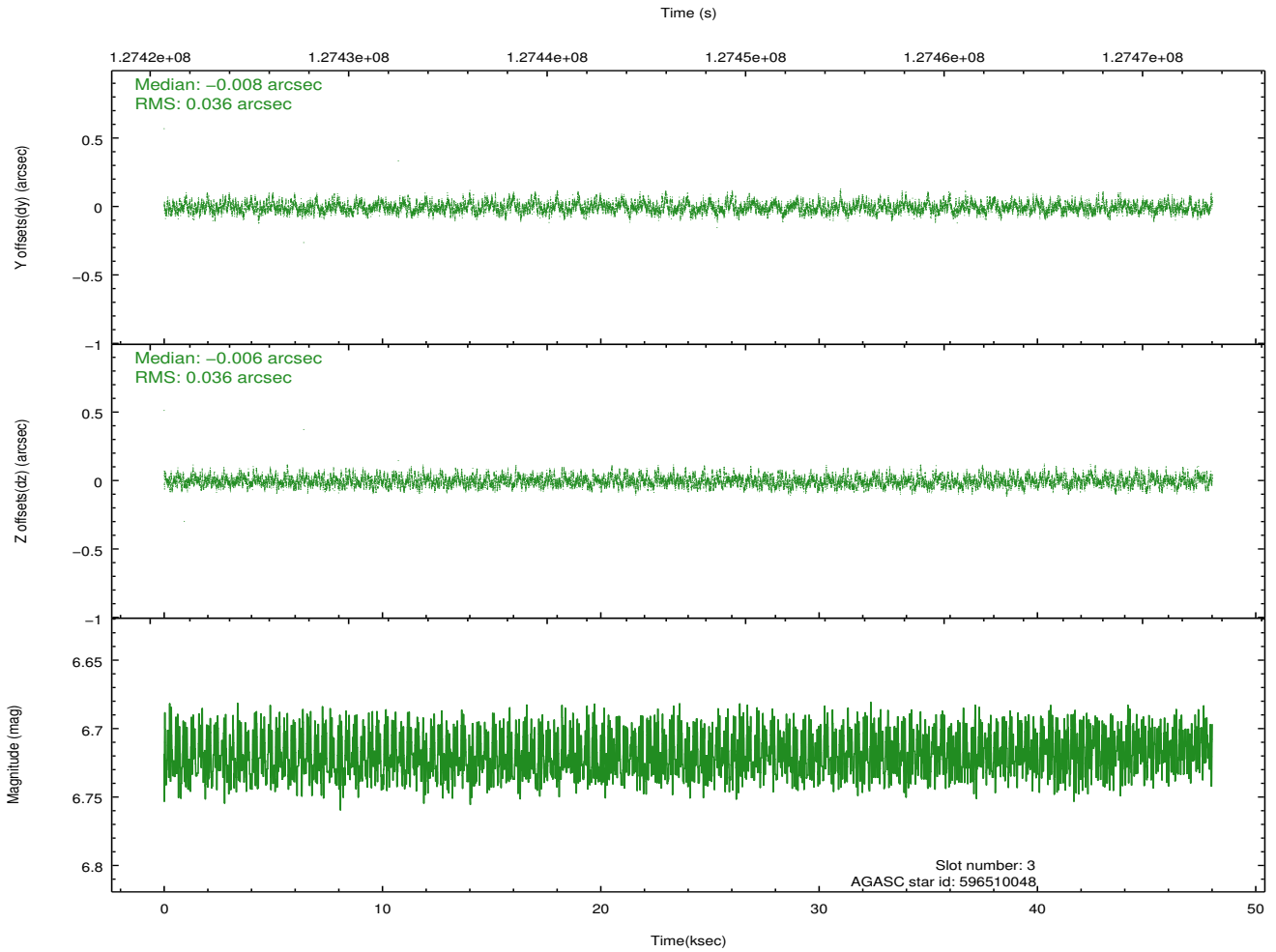
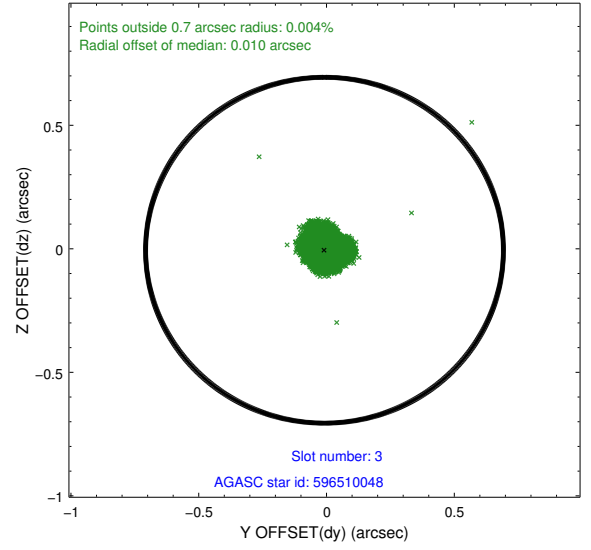
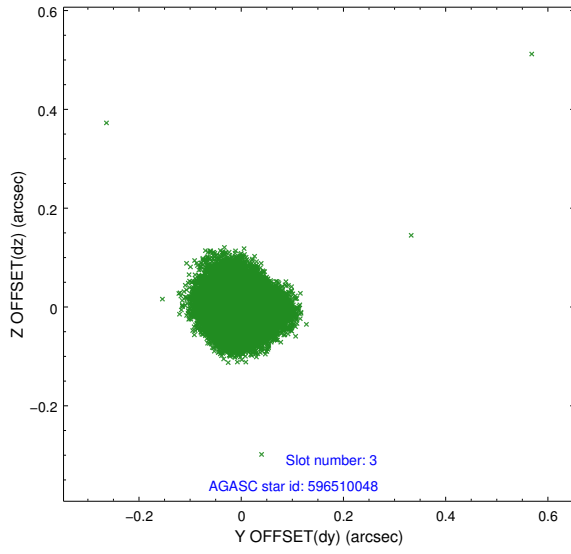


Slot Statistics

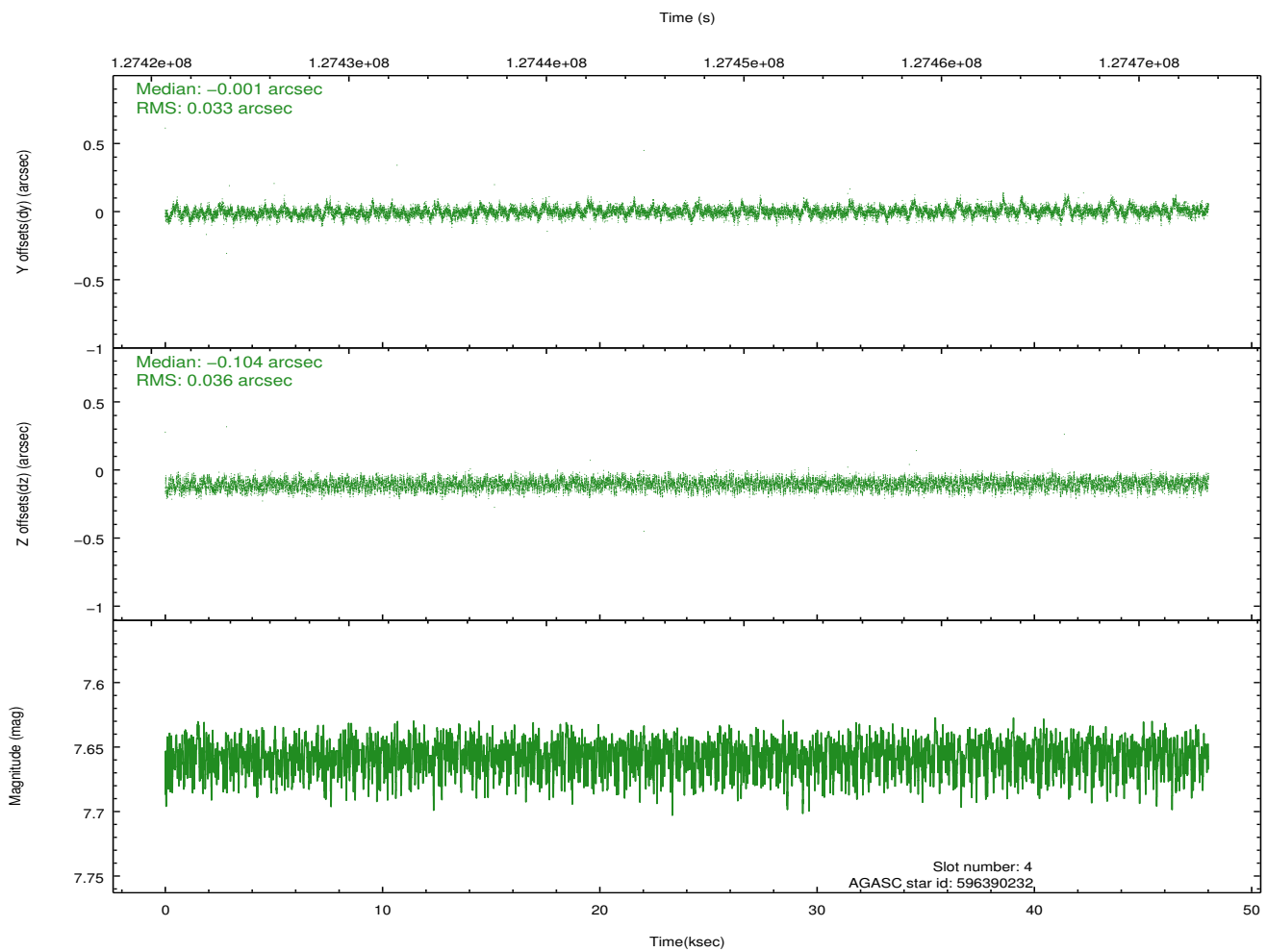
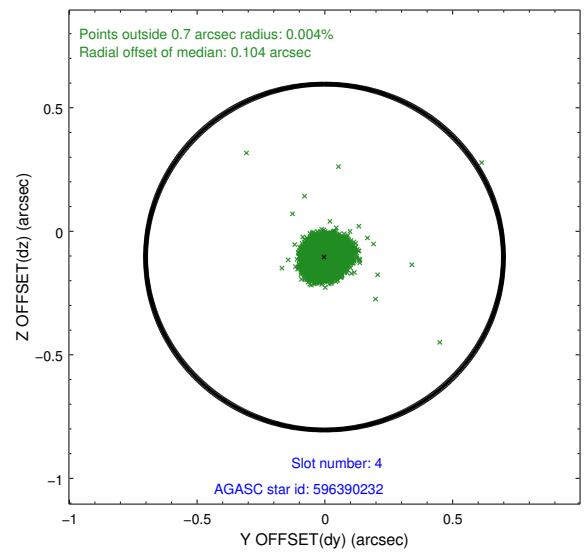
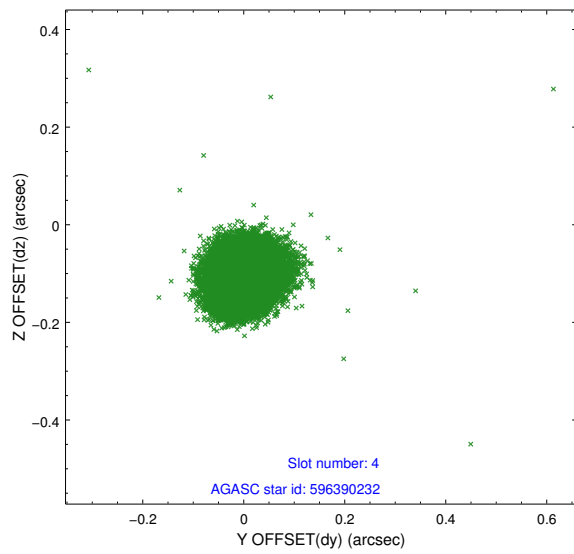
slot	status	id	mag	n_pts	med_dy	med_dz	dr1	dr2	ra	dec	mean_y	mean_z
0	FID	ACIS-S-2	7.12	11710	-0.025	0.006	0.007	0.011	0.000000	0.000000	-755.61	-1727.76
1	FID	ACIS-S-4	7.20	11712	-0.022	0.011	0.006	0.010	0.000000	0.000000	2157.65	180.78
2	FID	ACIS-S-5	7.24	11712	0.016	-0.008	0.007	0.012	0.000000	0.000000	-1808.45	174.36
3	GUIDE	596510048	6.72	23424	-0.008	-0.006	0.055	0.085	188.427937	75.212520	-901.91	-814.87
4	GUIDE	596390232	7.66	23422	-0.001	-0.104	0.052	0.082	186.553365	75.719145	1250.30	434.45
5	GUIDE	596512320	8.47	23421	-0.015	0.101	0.075	0.120	188.688284	76.018788	1893.12	-1631.84
6	GUIDE	596521816	9.02	23414	-0.014	-0.000	0.094	0.153	190.182501	75.002368	-1953.94	-2264.34
7	GUIDE	596378936	9.32	23406	0.038	0.013	0.074	0.121	185.905753	75.866397	1902.81	861.86

2.4 Star Slots

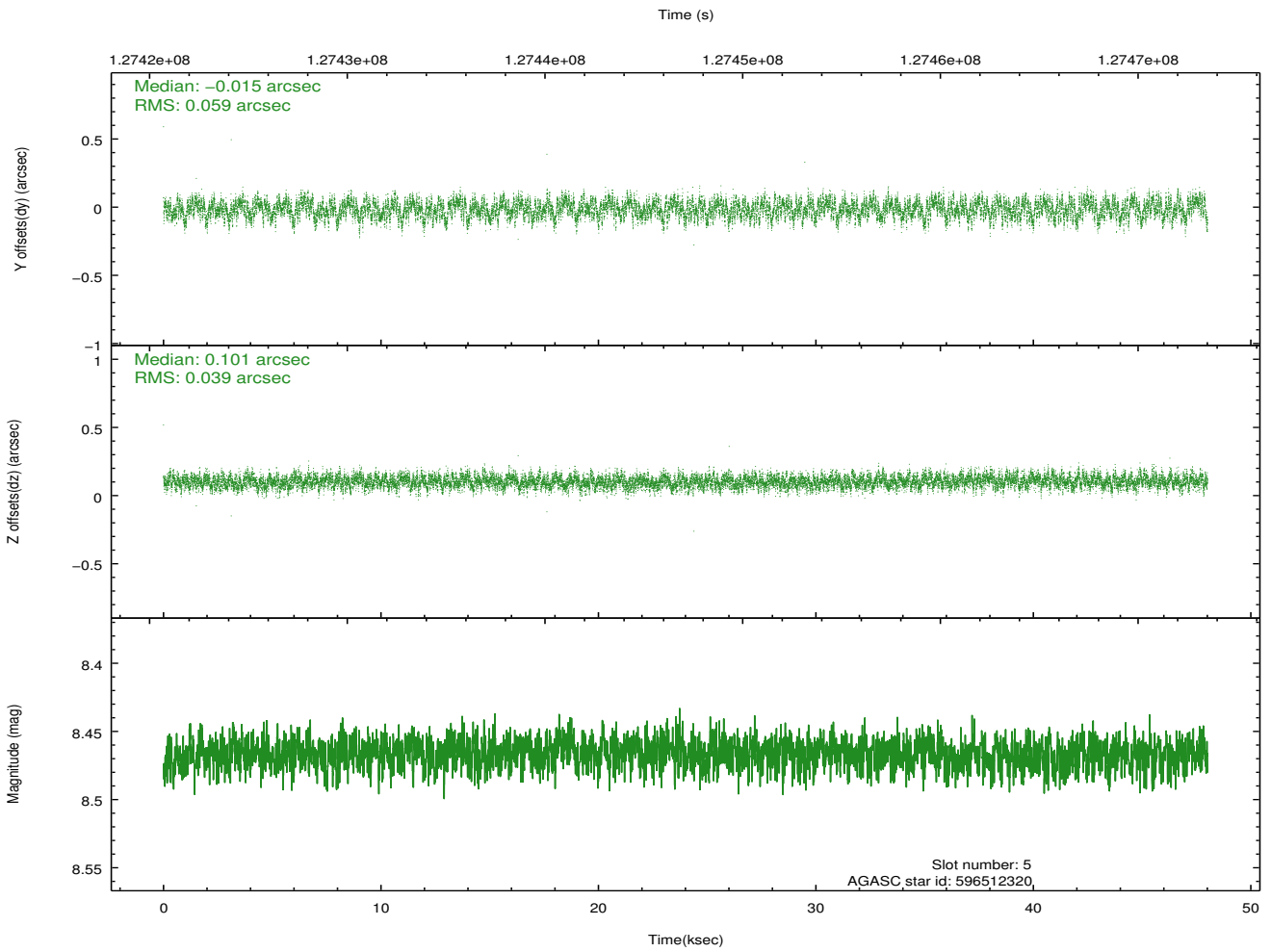
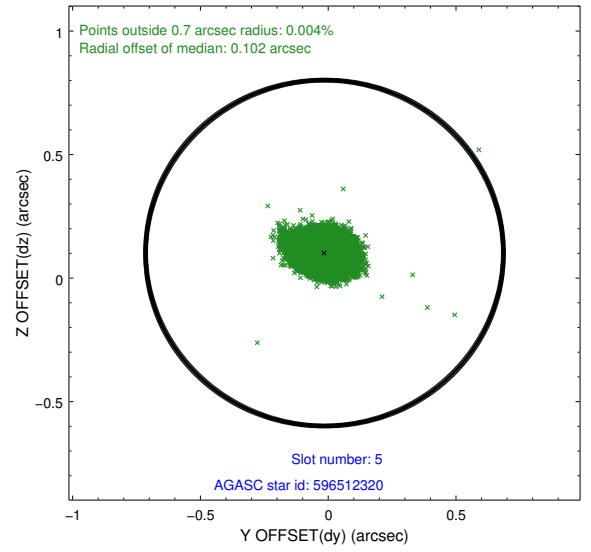
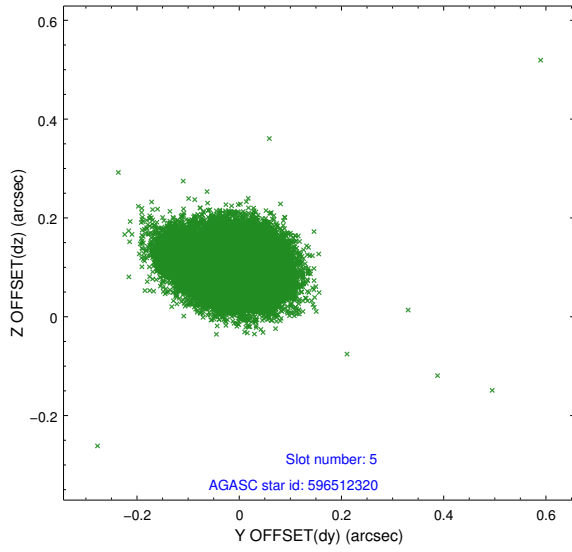
2.4.1 Slot 3



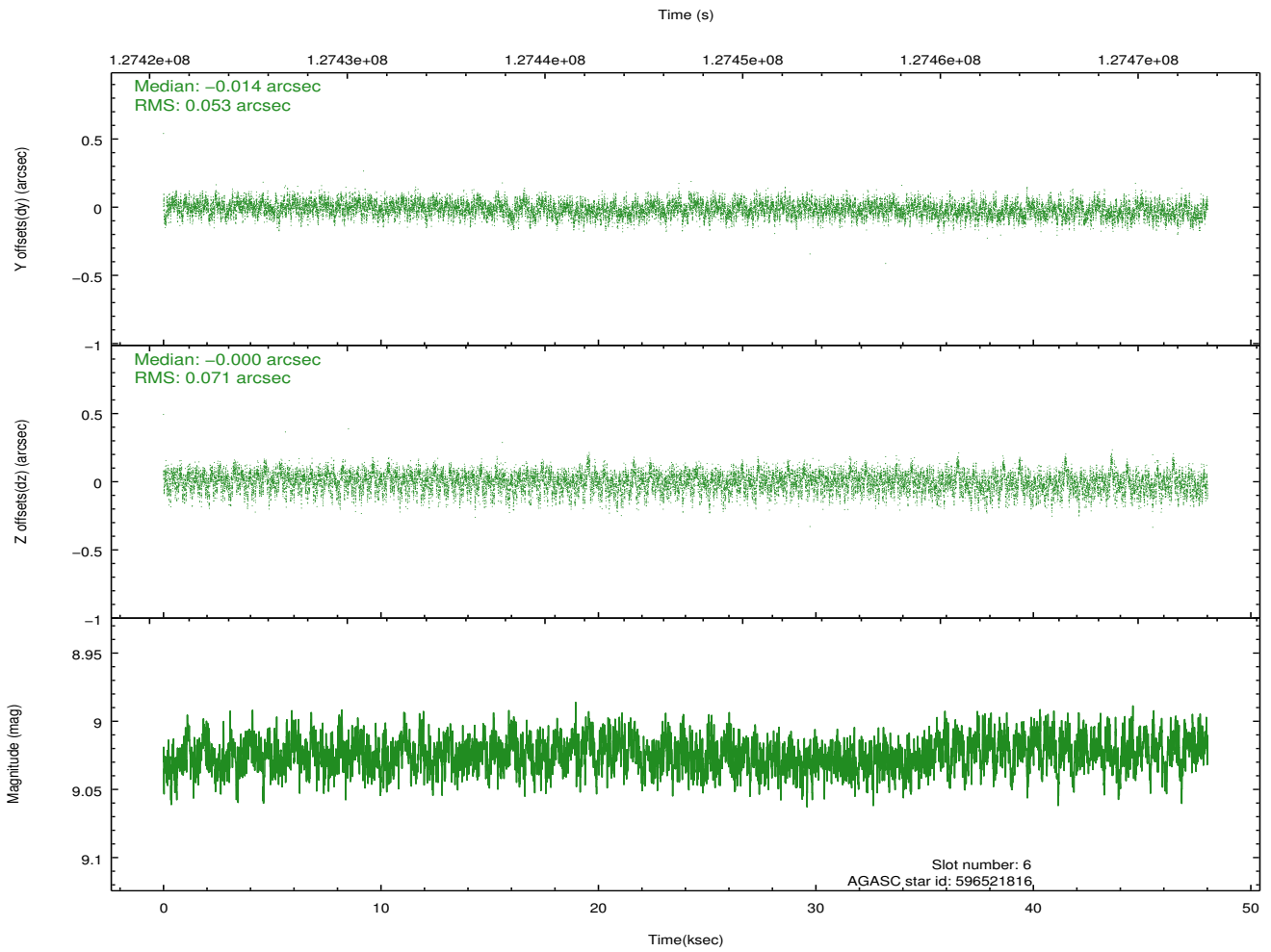
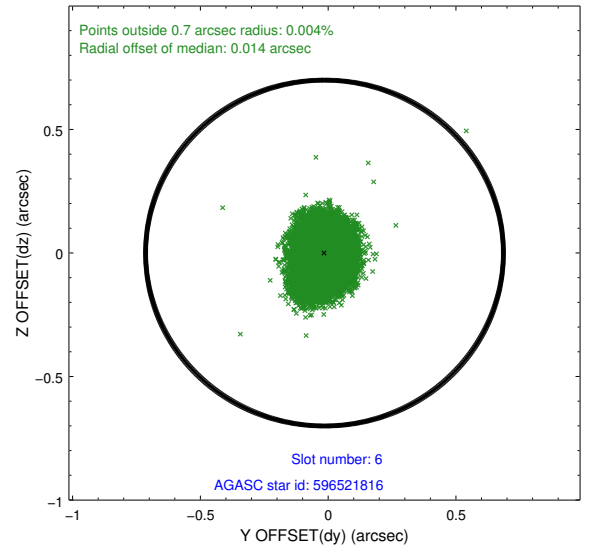
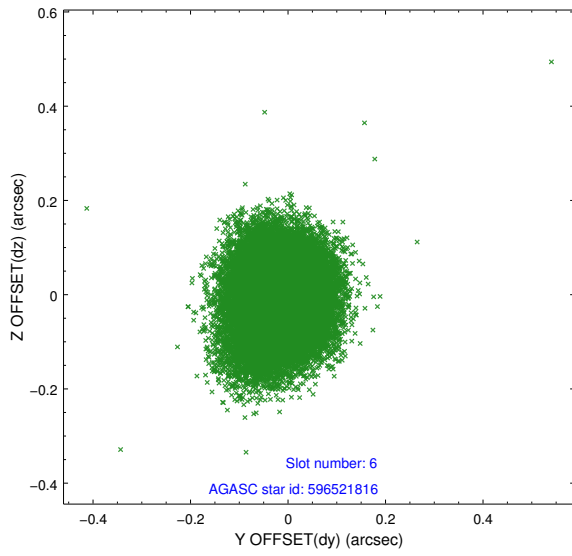
2.4.2 Slot 4



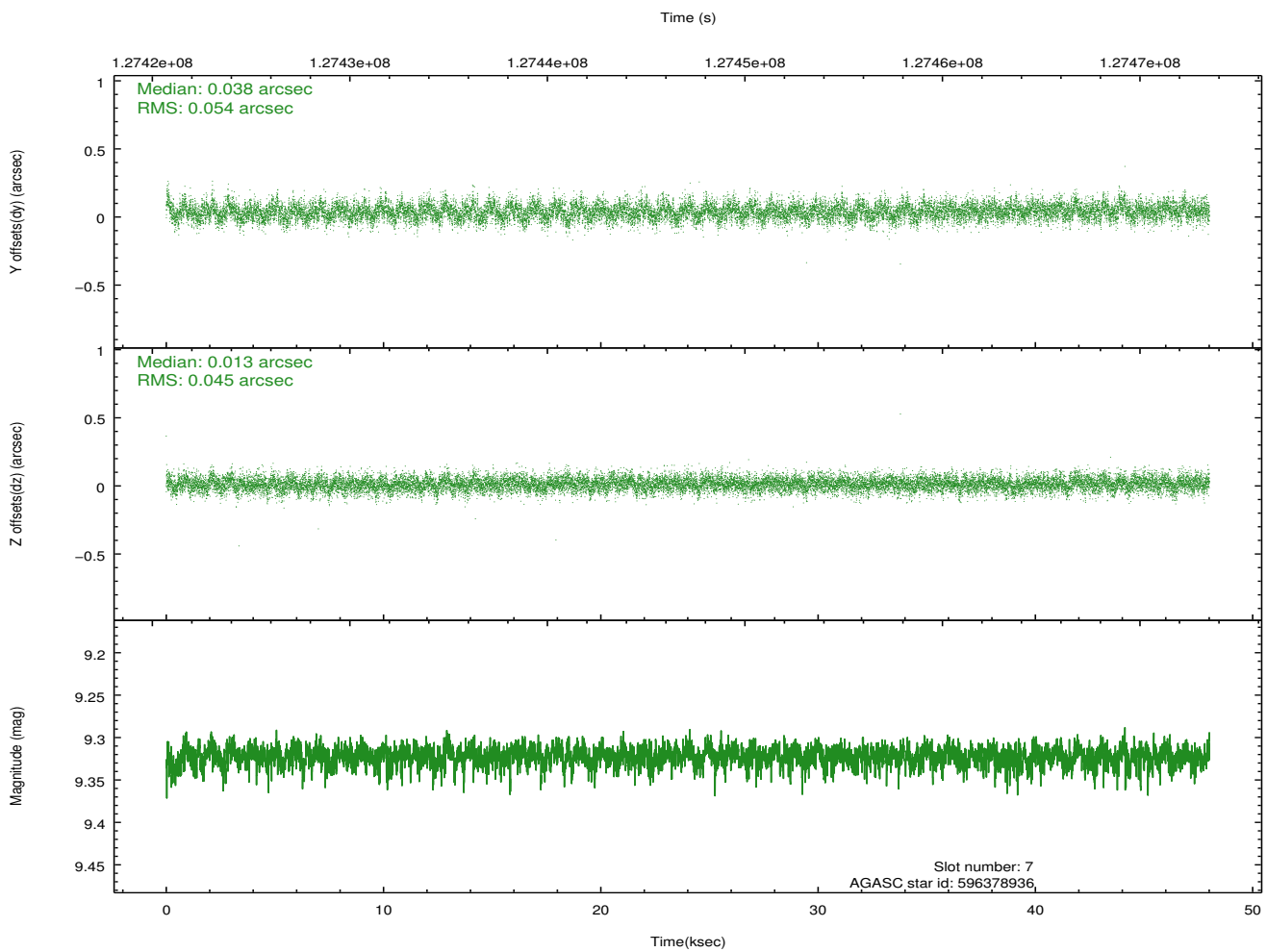
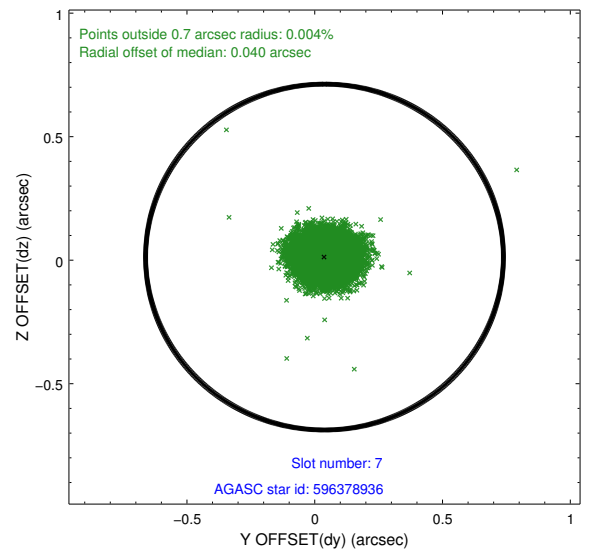
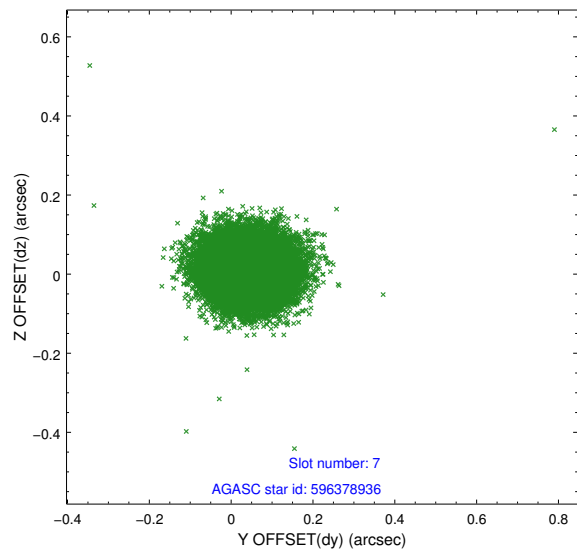
2.4.3 Slot 5



2.4.4 Slot 6

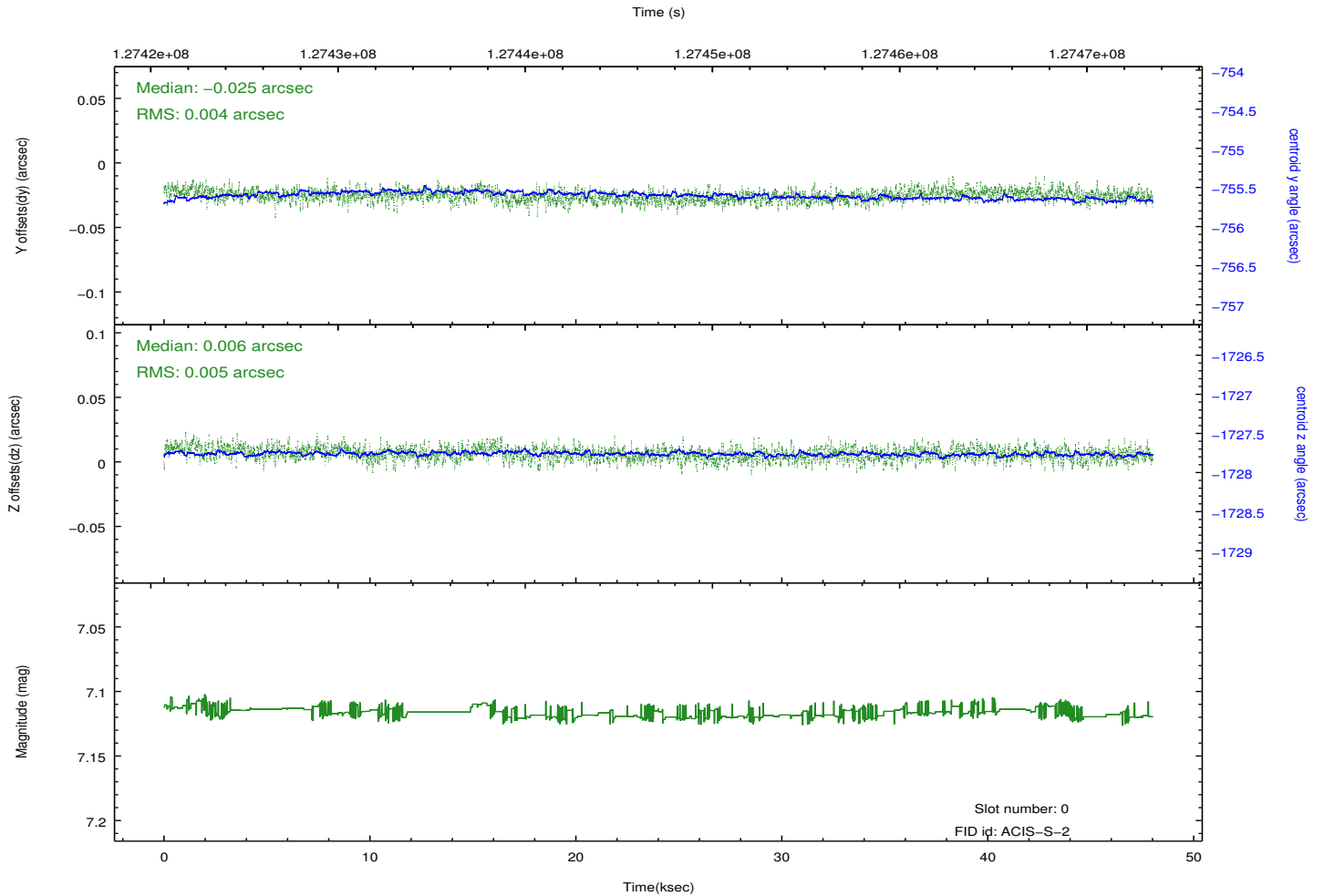
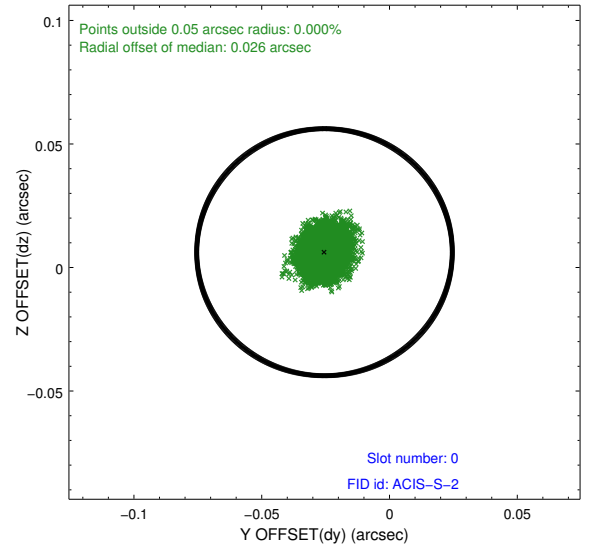
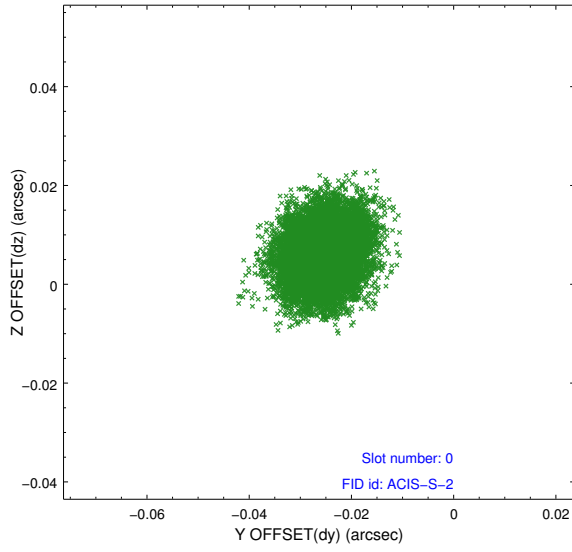


2.4.5 Slot 7

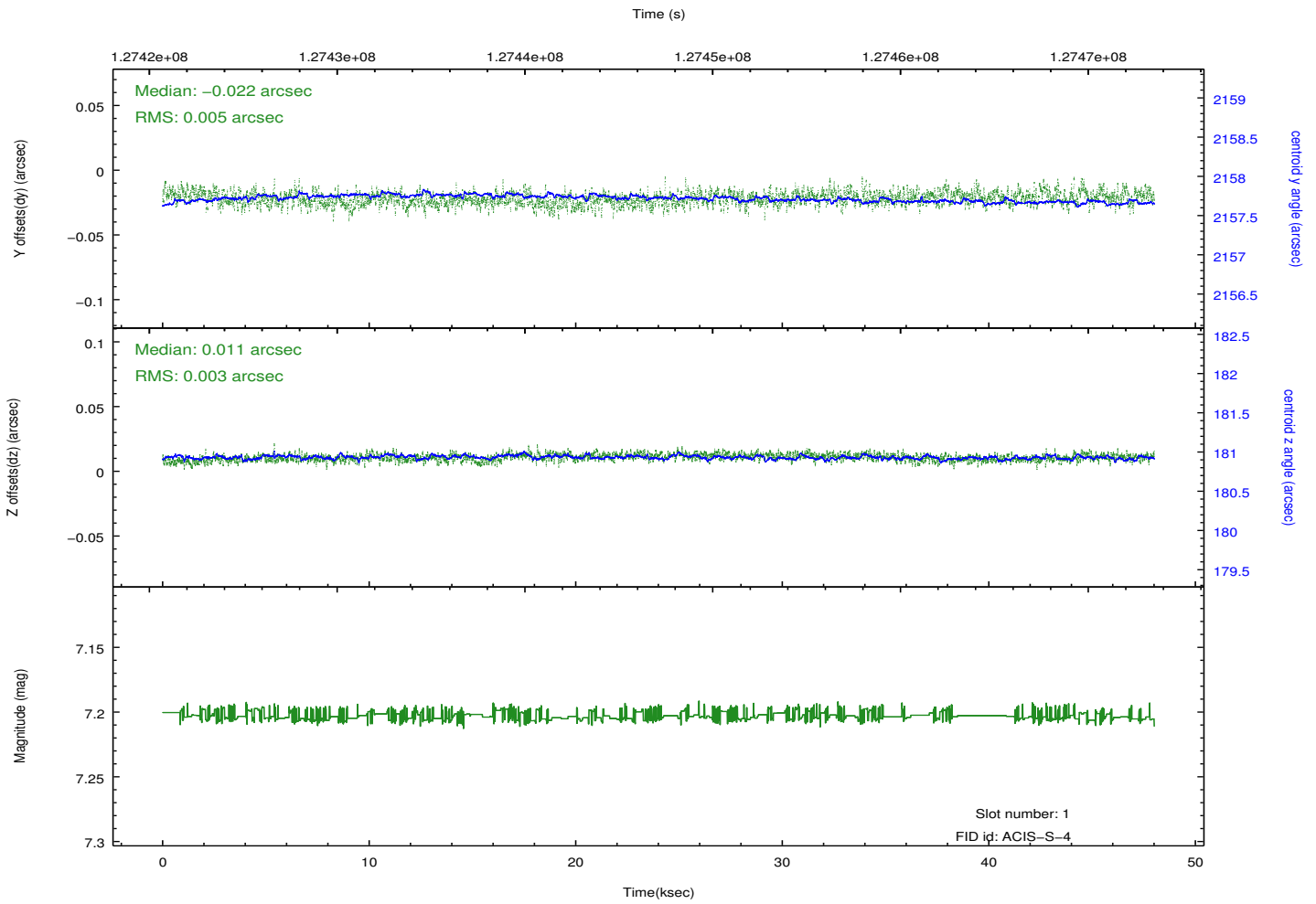
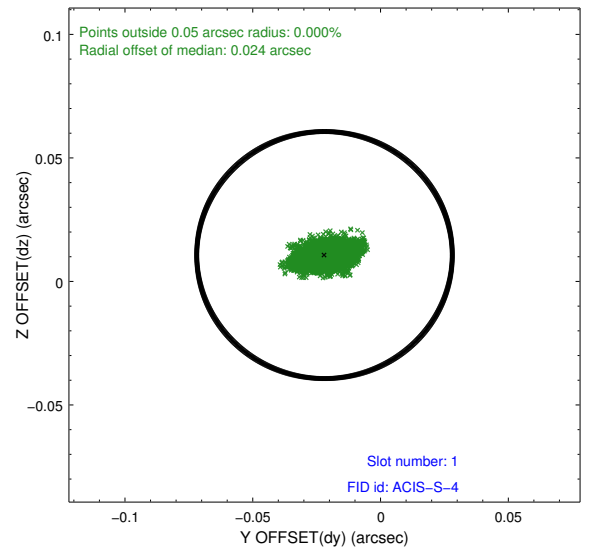
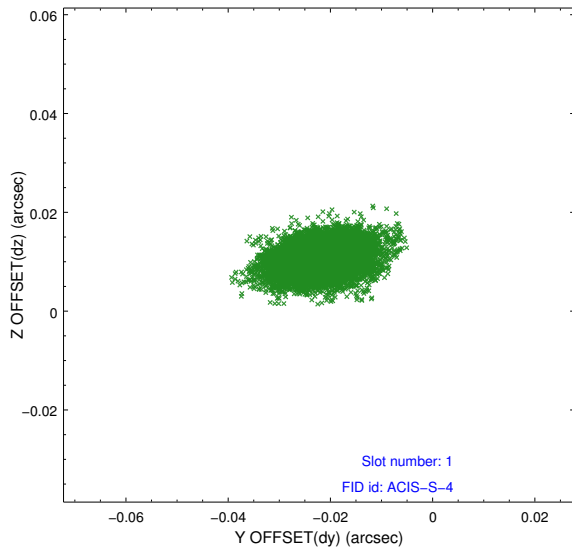


2.5 FID Slots

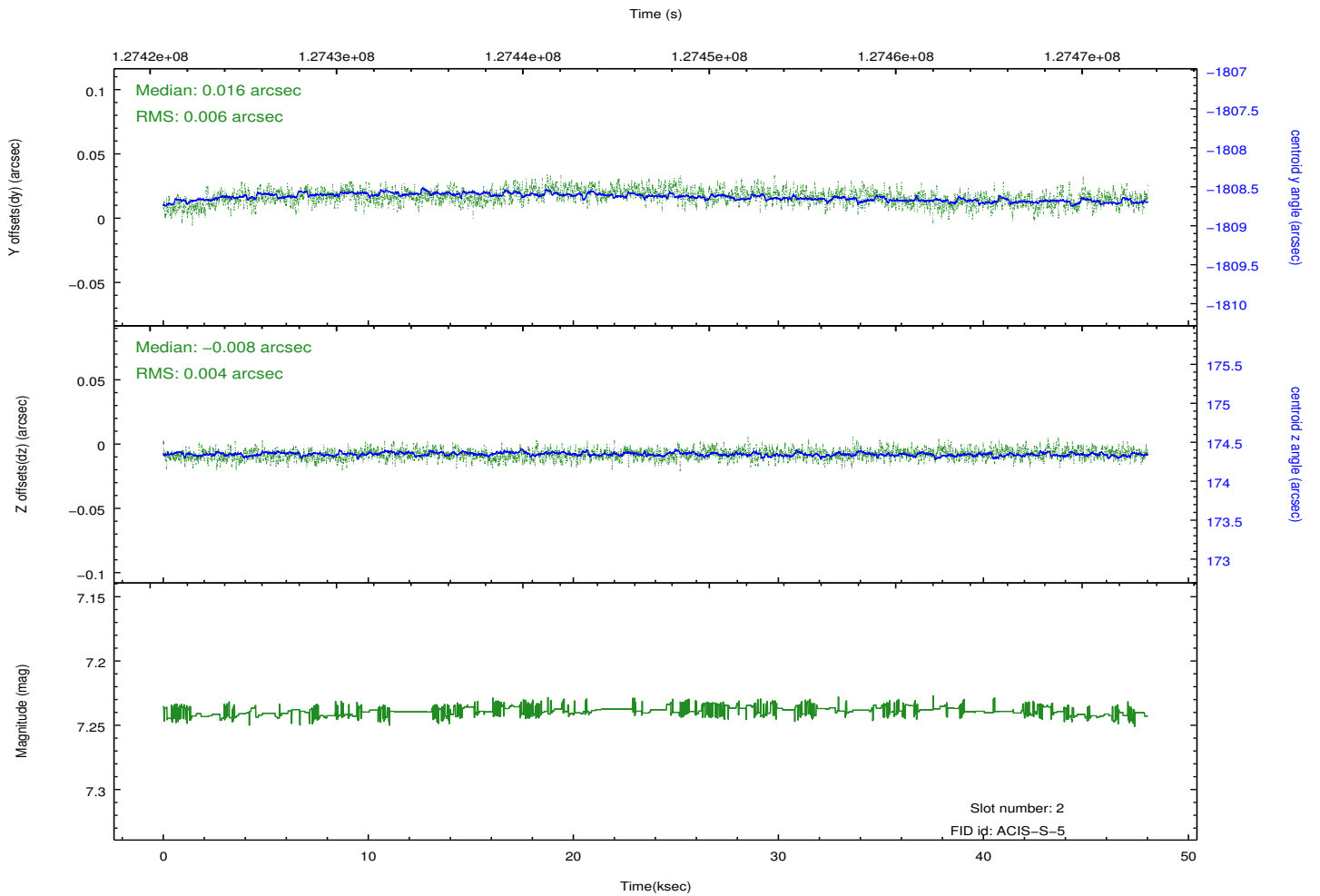
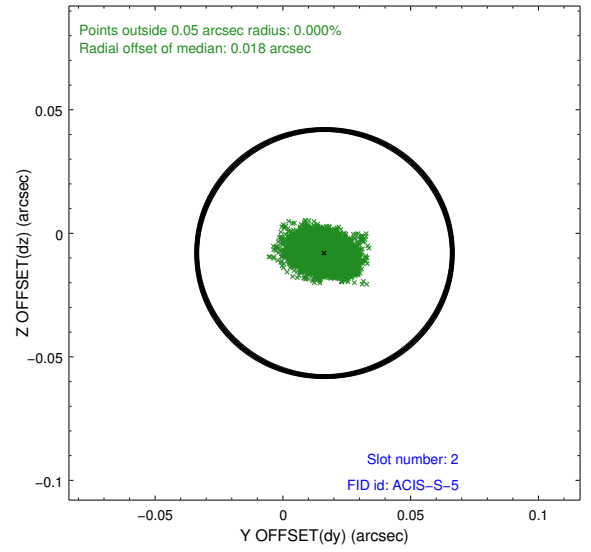
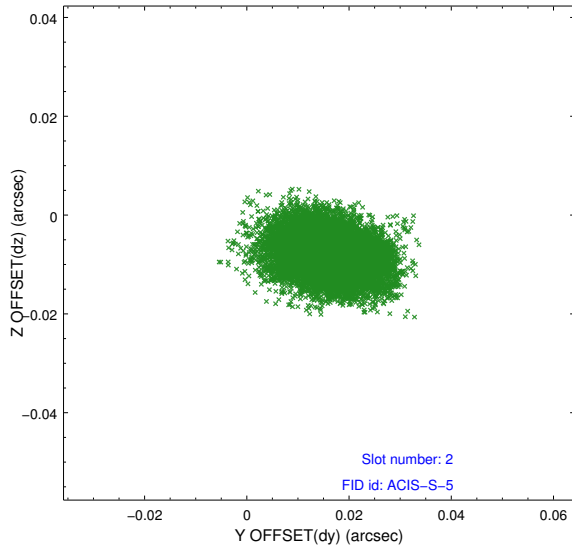
2.5.1 Slot 0



2.5.2 Slot 1



2.5.3 Slot 2



A Summary

A.1 Status

V&V Scientist	Beth Sundheim
V&V Date (YYYY-MM-DD)	2012.10.02
V&V Edition	1
V&V Disposition and Status	OK
V&V Charge Time	48.009

A.2 Comments