

V&V Reference Report

L2 ASCDS Version : 8.1.2

Observation 23 - L2 Version 5
Chandra X-Ray Center

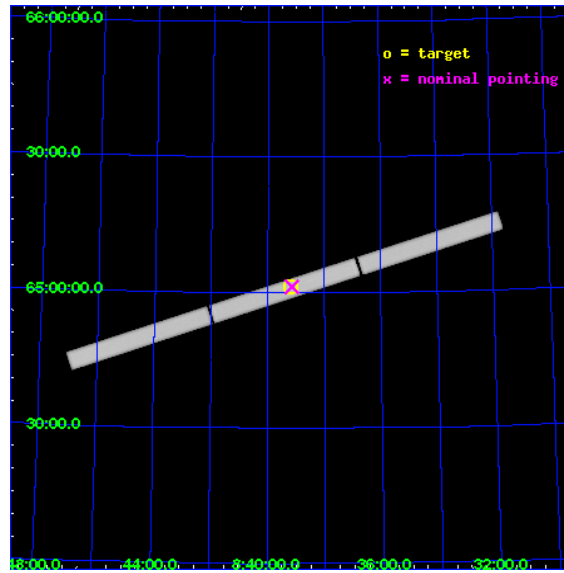
L2 Processing Date : Dec 2 2009

Contents

1	Front	2
2	OBI	3
2.1	OBI	3
2.1.1	Images	3
2.1.2	Parameters	4
2.1.3	Events	4
2.2	Compared Parameters	5
2.3	Aspect	6
2.4	Star Slots	9
2.4.1	Slot 3	9
2.4.2	Slot 4	10
2.4.3	Slot 5	11
2.4.4	Slot 6	12
2.4.5	Slot 7	13
2.5	FID Slots	14
2.5.1	Slot 0	14
2.5.2	Slot 1	15
2.5.3	Slot 2	16
3	Gratings	17
3.1	LETG Arm	17
A	Summary	19
A.1	Status	19
A.2	Comments	19

1 Front

seq_num	200021	Sequence number
obs_id	23	Observation id
title	EMISSION FROM LATE-TYPE STARS	Proposal title
observer	Dr Steve Murray	Principal investigator
object	PI-1 UMA	Source name
ra_targ	129.799583	Observer's specified target RA
dec_targ	65.019722	Observer's specified target Dec
ra_nom	129.78830009265	Nominal RA
dec_nom	65.02164366789	Nominal Dec
roll_nom	162.03618796915	Nominal Roll
revision	5	Processing version of data
ontime	30212.132347606	[s]
livetime	30014.618792769	Ontime multiplied by DTCOR
l2events	1335943	Number of level 2 events

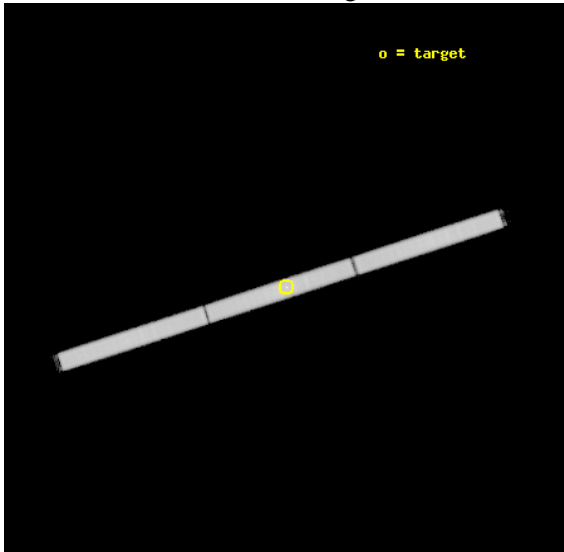


2 OBI

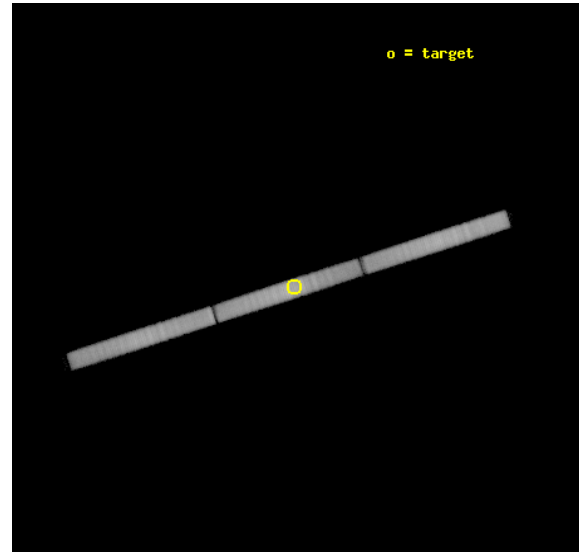
2.1 OBI

2.1.1 Images

Level 1 Image



Level 1 Bad Events



2.1.2 Parameters

obi_num	0	Obi number	sched_exp_time	30000.000000	Scheduled observation exposure time
ascdsver	8.1.2	Processing system revision	ontime	30212.132347606	[s]
caldbver	4.1.4	 	ll events	2157012	Number of level 1 events
date	2009-12-02T14:35:54	Date and time of file creation			
revision	5	Processing version of data			

2.1.3 Events

Level 1 Events

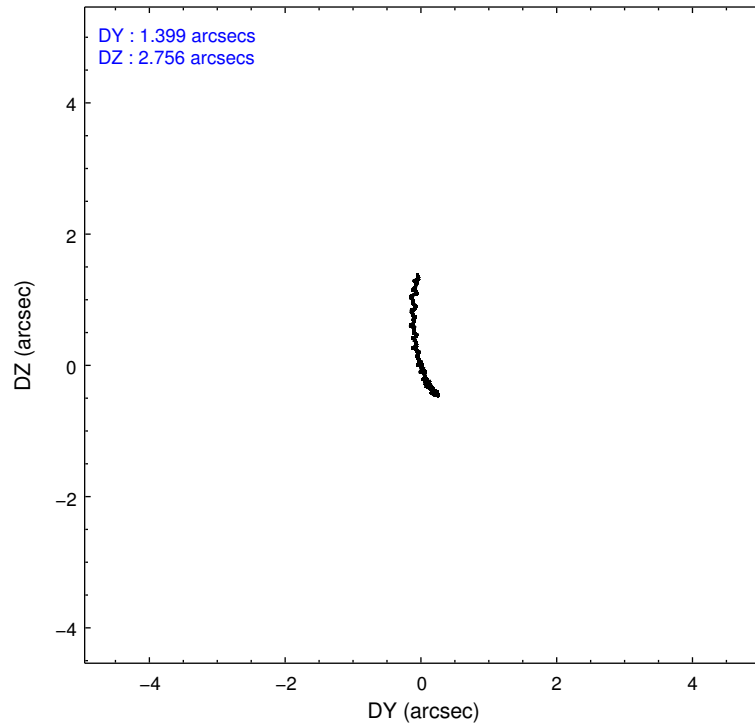
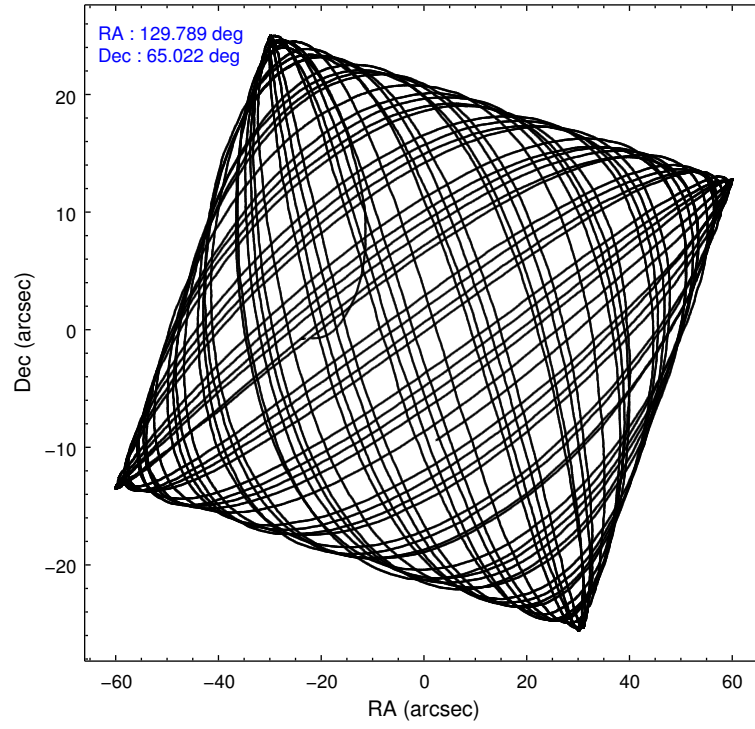
	segment 1	segment 2	segment 3
level 1 events	721859	707079	728074
rejected events	190823	203225	230658
rejected %	26%	28%	31%

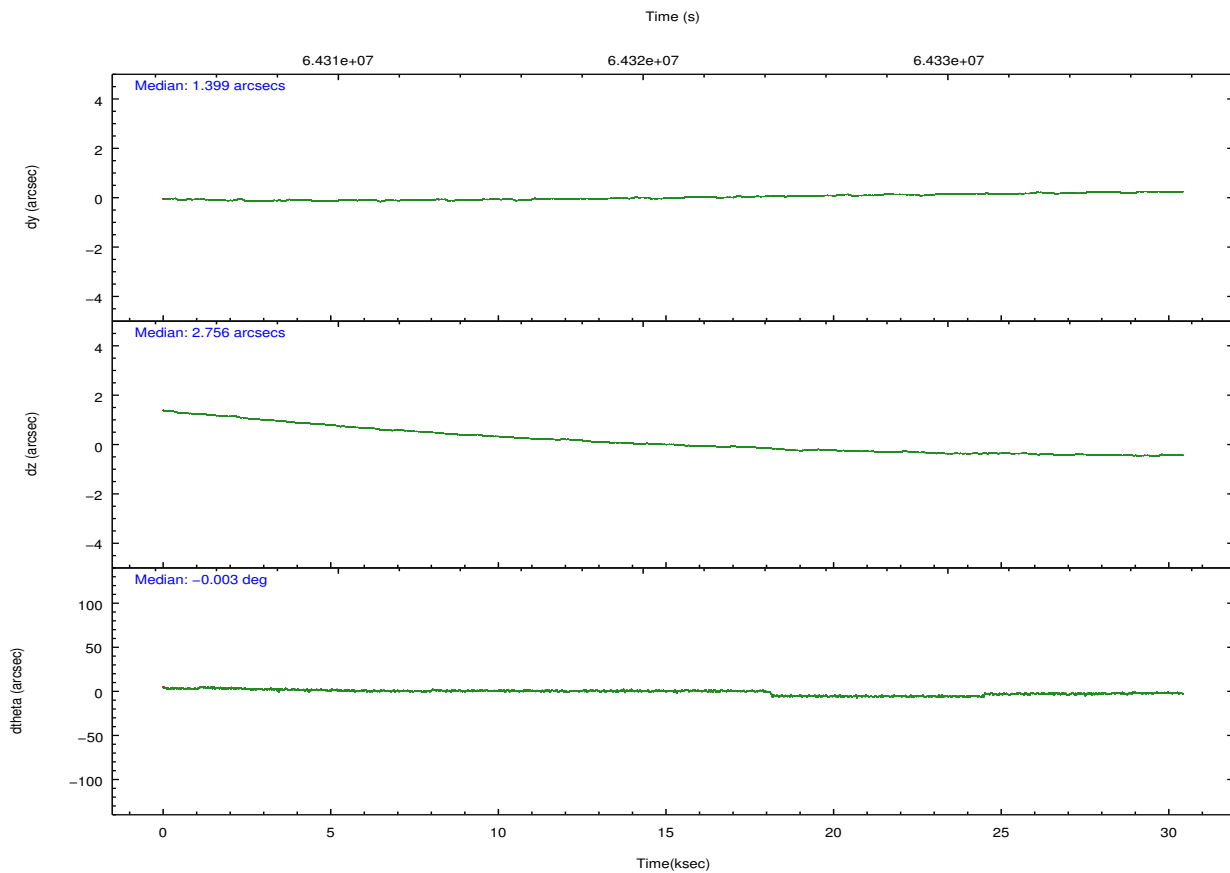
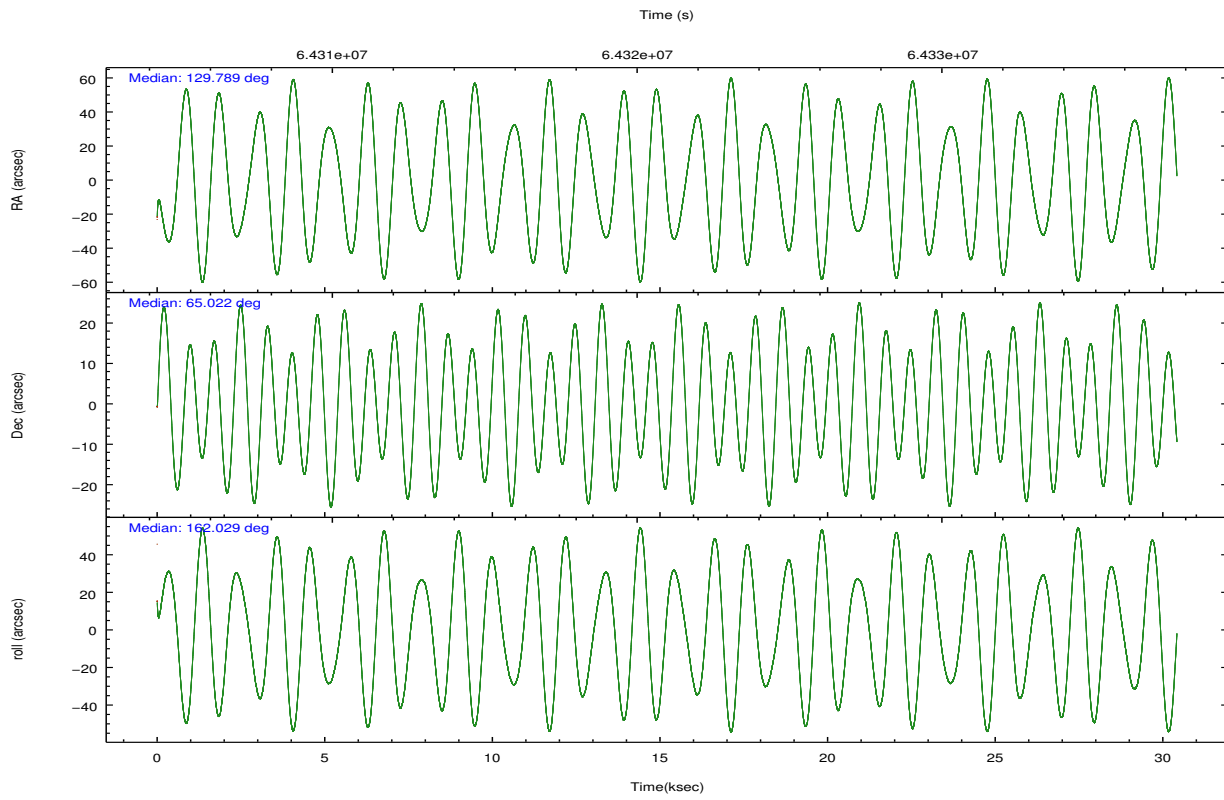
2.2 Compared Parameters

Parameter	Planned	Actual
Instrument	HRC	HRC
Detector	HRC-S	HRC-S
Grating	LETG	LETG
Data mode	OBSERVING	OBSERVING
Observation mode	POINTING	POINTING
Pointing RA	129.854614	129.7883000926477
Pointing Dec	65.028631	65.02164366789026
Pointing Roll	161.908741	162.0361879691549
SIM focus pos (mm)	-1.429586	-1.428180813131781
SIM defocus (mm)	0.1037507710433287	0.1051558262725154
SIM translation stage pos (mm)	250.455976	250.466033080201
SIM translation stage offset (mm)	0	-0.01005468664627074
Observation start time	64306193.184000	64304062.817602
Observation start date	2000-01-15T06:48:49	2000-01-15T06:14:22
Observation end time	64336193.184000	64337044.7563
Observation end date	2000-01-15T15:08:49	2000-01-15T15:24:04

Parameter	Planned	Actual
Obspar format version number	6	6
Obspar file type	PREDICTED	ACTUAL
Obspar update status	NONE	UPDATED

2.3 Aspect



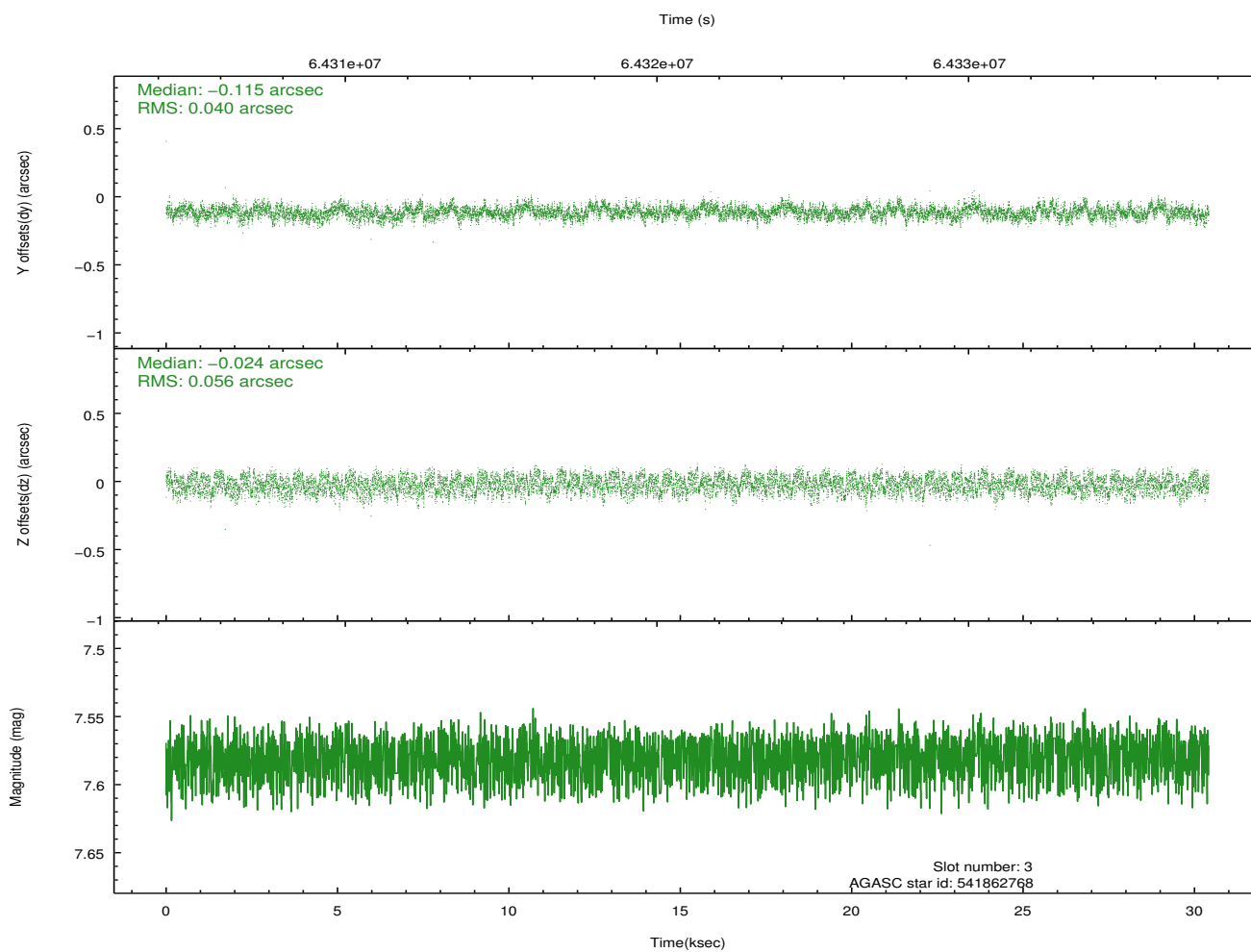
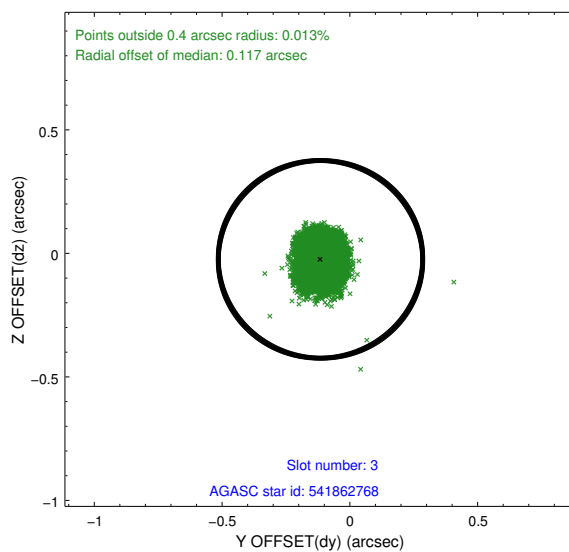
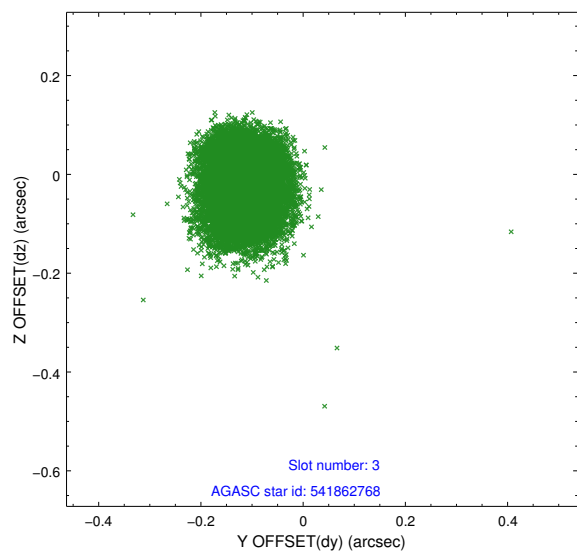


Slot Statistics

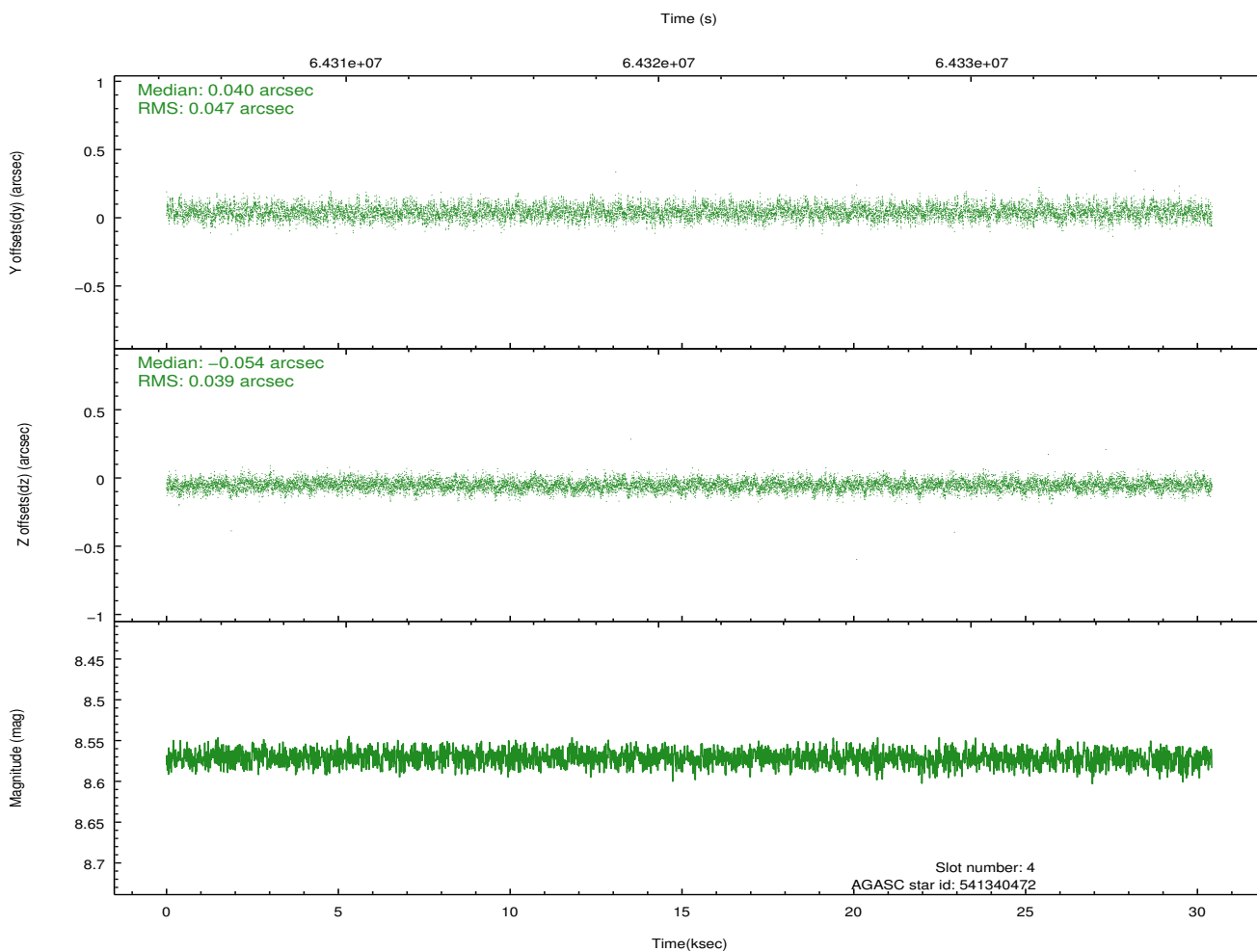
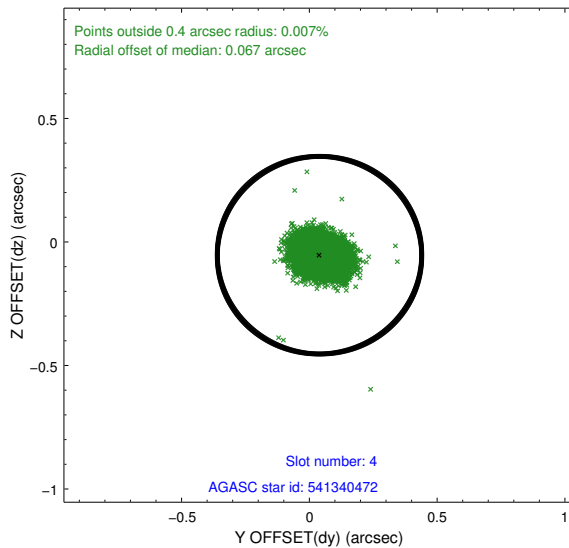
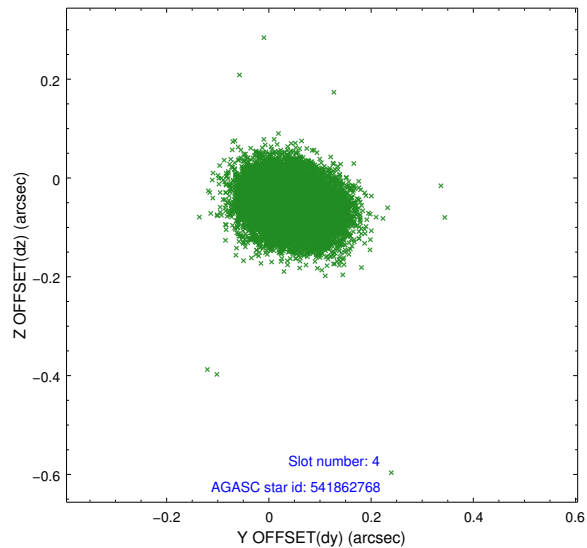
slot	status	id	mag	n_pts	med_dy	med_dz	dr1	dr2	ra	dec	mean_y	mean_z
0	FID	HRC-S-2	6.99	7420	0.122	-0.083	0.031	0.064	0.000000	0.000000	1244.23	-443.94
1	FID	HRC-S-3	7.01	7418	0.153	-0.104	0.010	0.017	0.000000	0.000000	-1157.97	578.17
2	FID	HRC-S-4	6.96	7419	0.129	-0.112	0.033	0.069	0.000000	0.000000	1242.67	580.87
3	GUIDE	541862768	7.58	14838	-0.115	-0.024	0.074	0.114	131.653376	65.455335	-2067.12	-2332.10
4	GUIDE	541340472	8.57	14838	0.040	-0.054	0.065	0.105	130.047824	64.568398	-798.03	1481.52
5	GUIDE	541332000	9.38	14828	-0.061	0.011	0.086	0.137	128.994083	64.719418	914.93	1460.69
6	GUIDE	541736200	9.66	14818	0.111	0.001	0.095	0.157	129.974405	65.392002	236.44	-1299.19
7	GUIDE	541340112	9.60	14824	0.021	0.067	0.100	0.162	129.449095	64.715706	243.92	1262.64

2.4 Star Slots

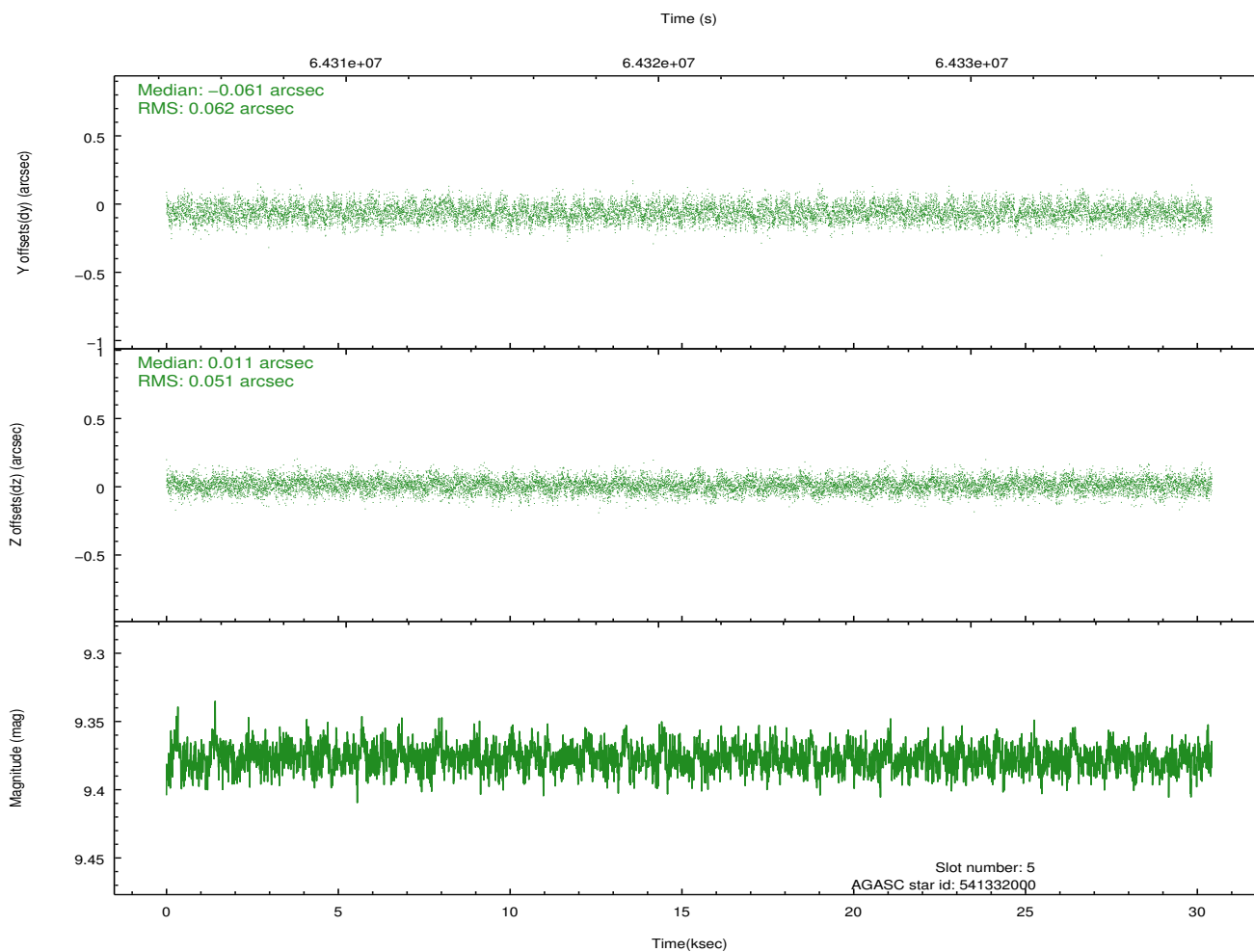
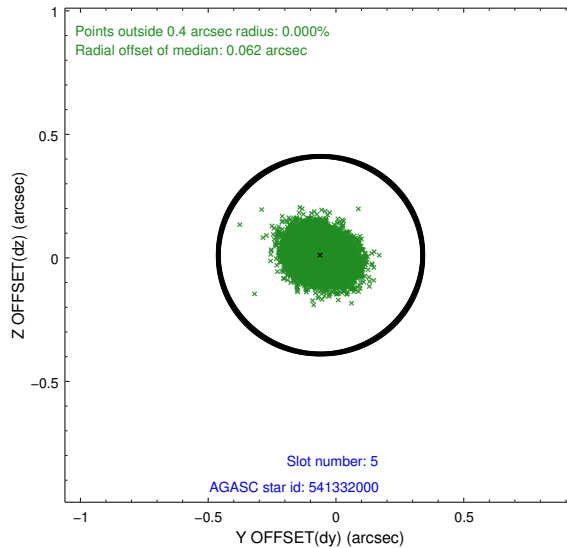
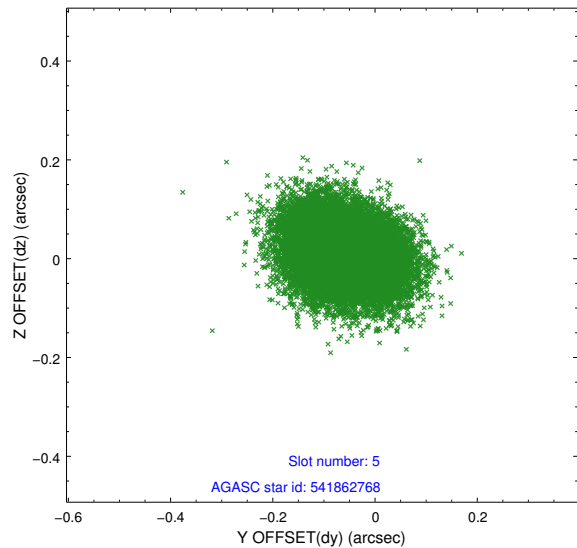
2.4.1 Slot 3



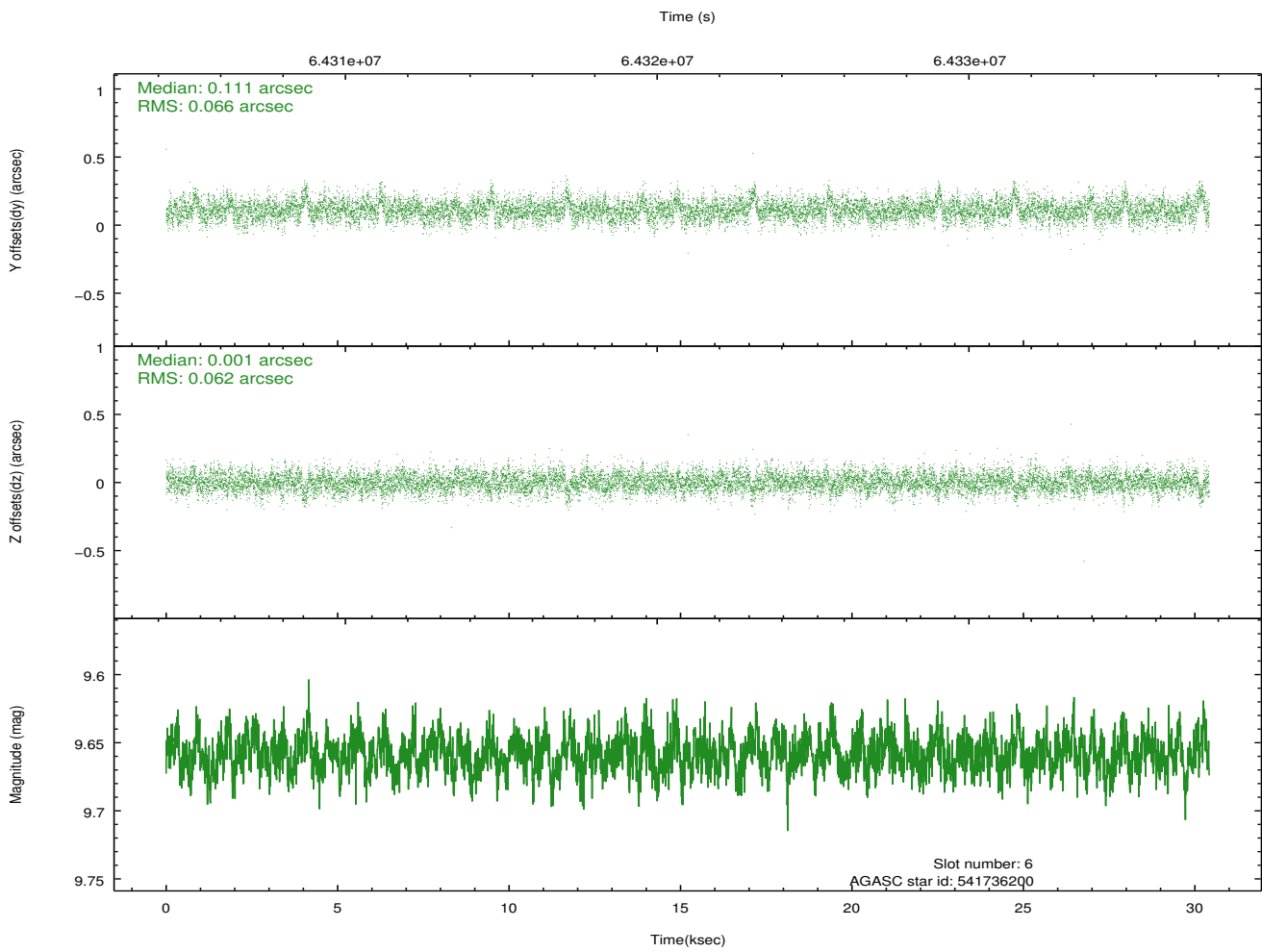
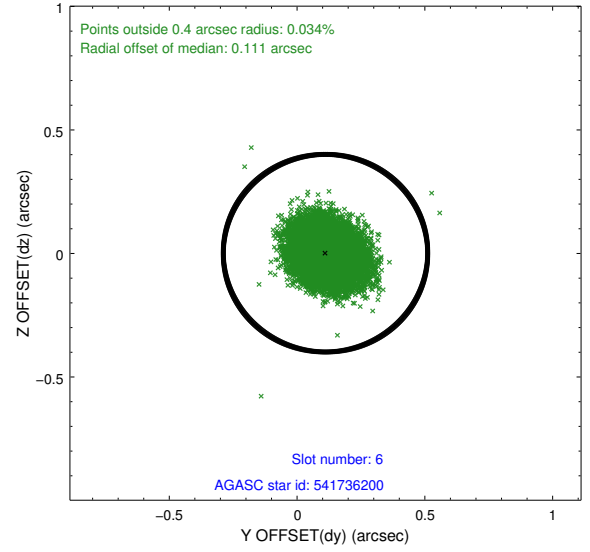
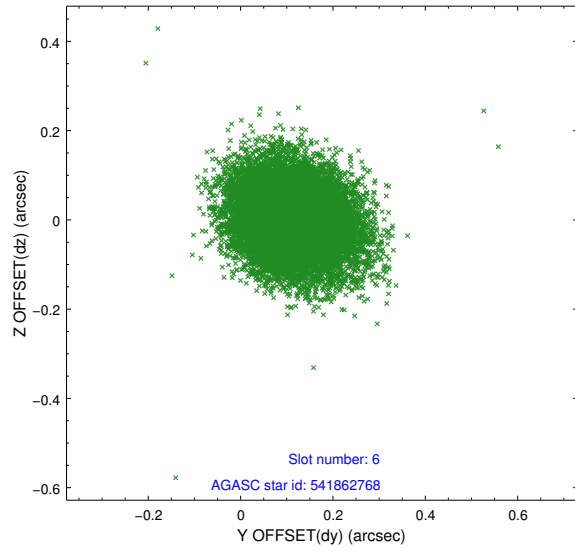
2.4.2 Slot 4



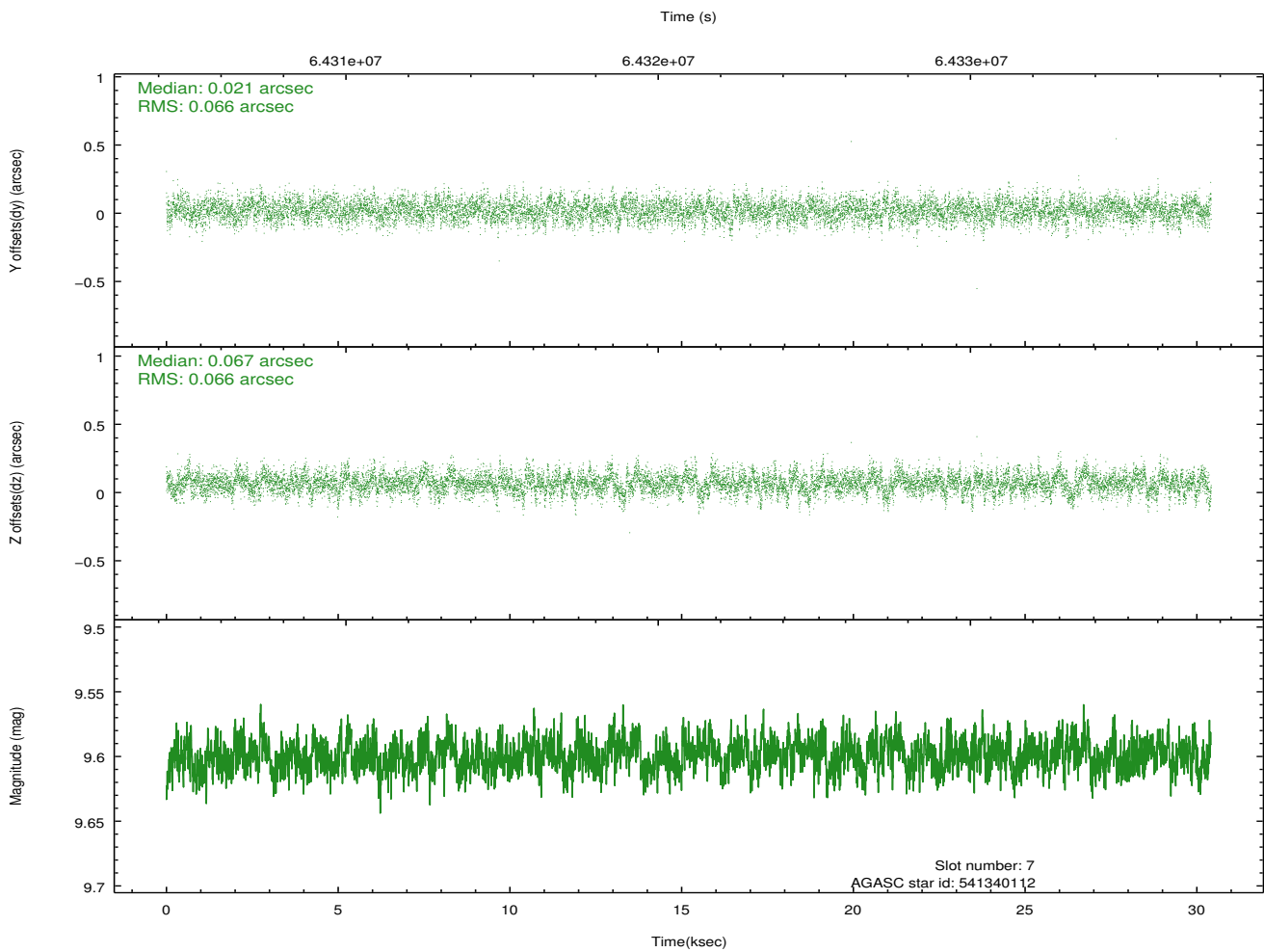
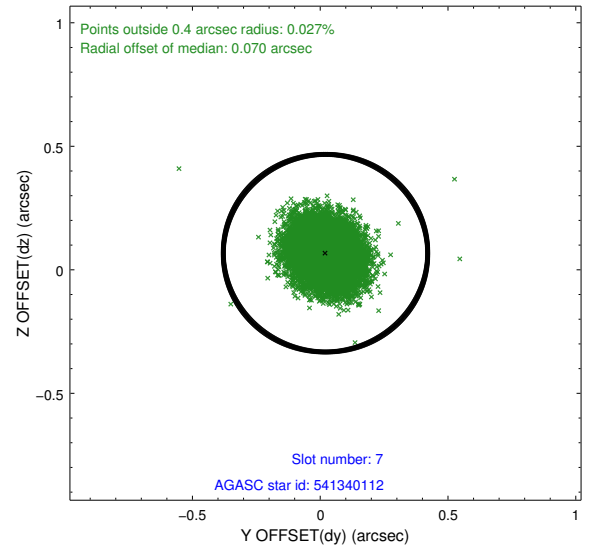
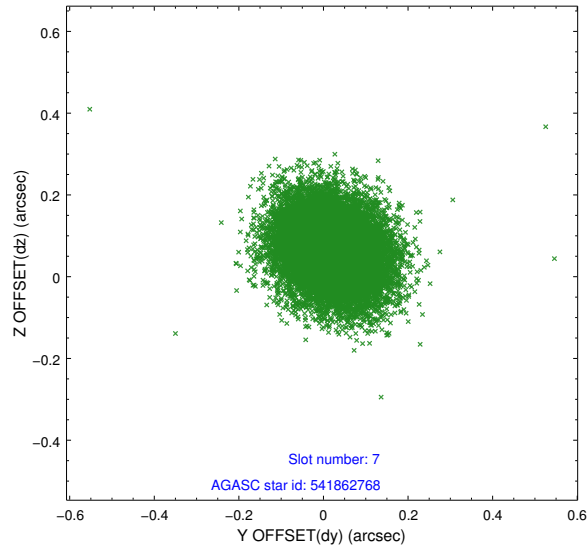
2.4.3 Slot 5



2.4.4 Slot 6

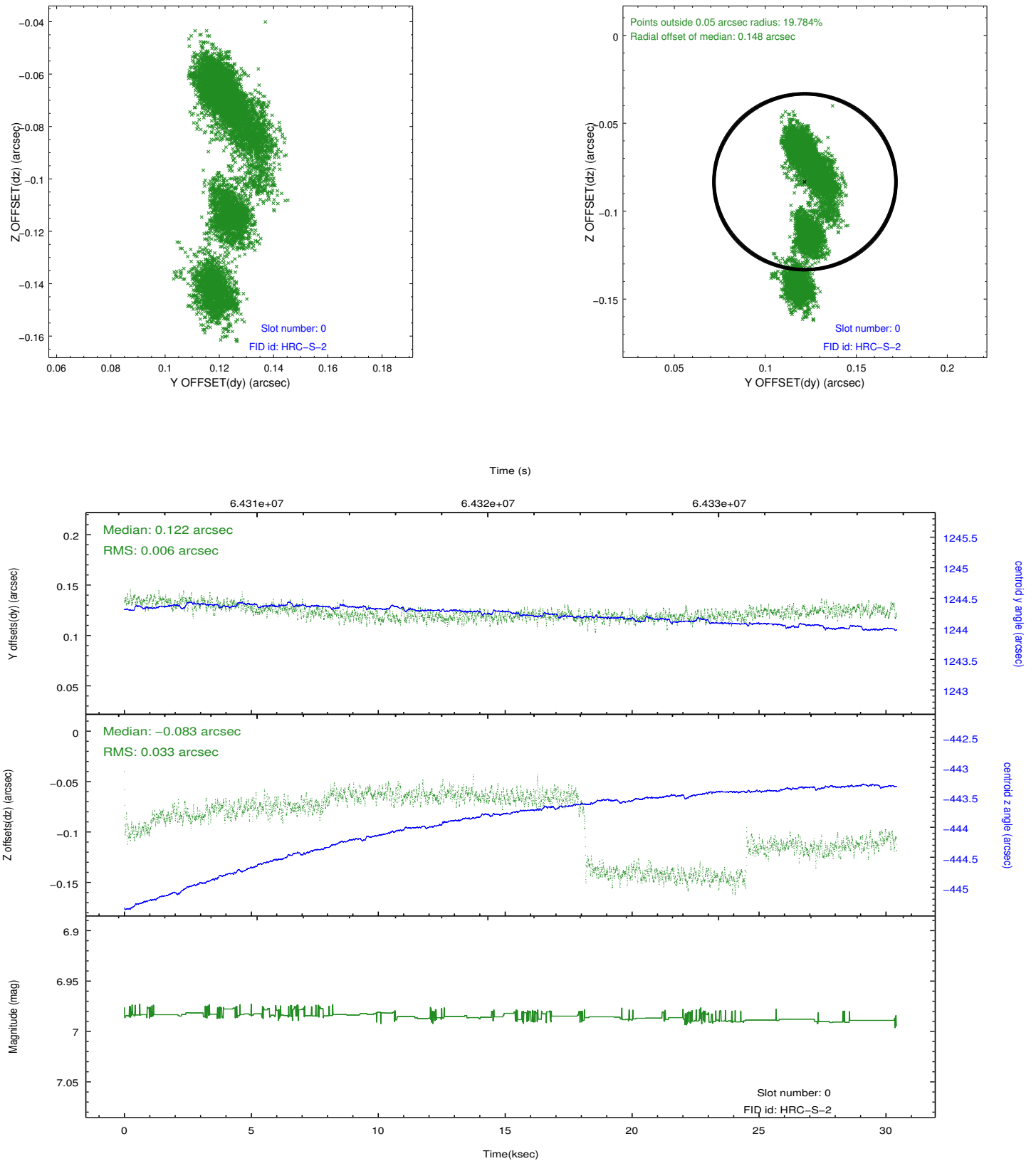


2.4.5 Slot 7

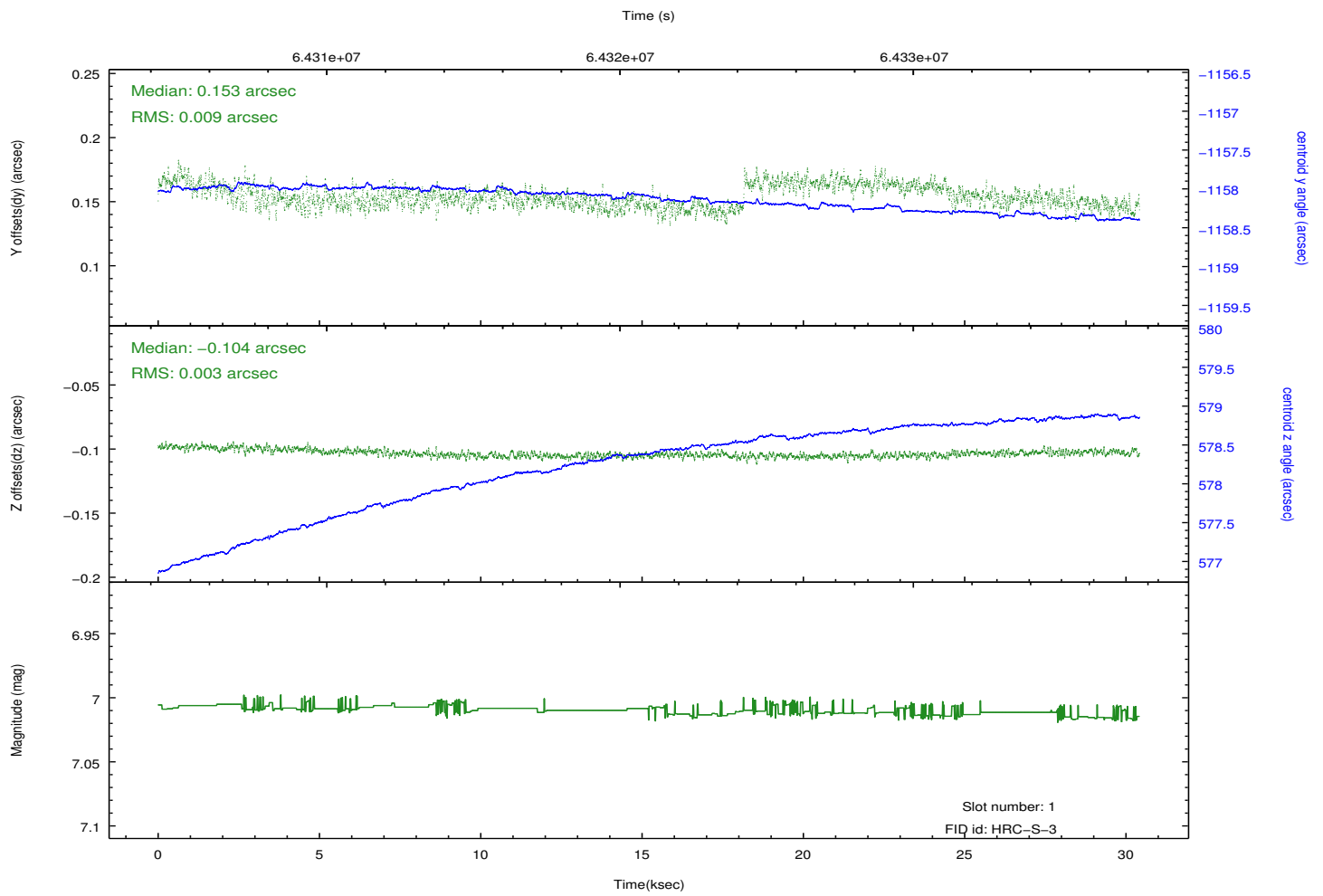
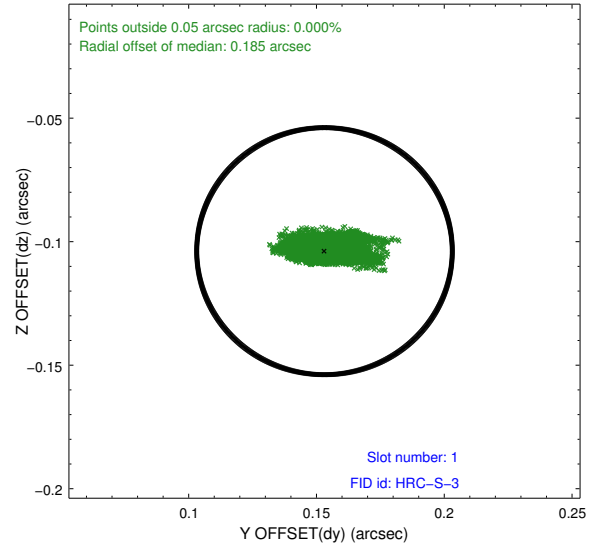
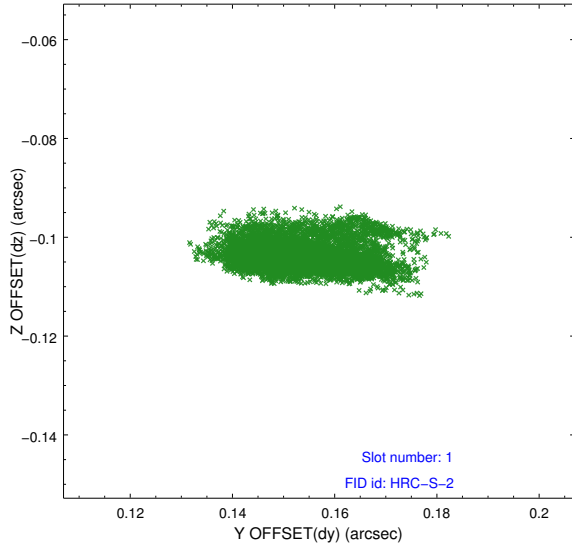


2.5 FID Slots

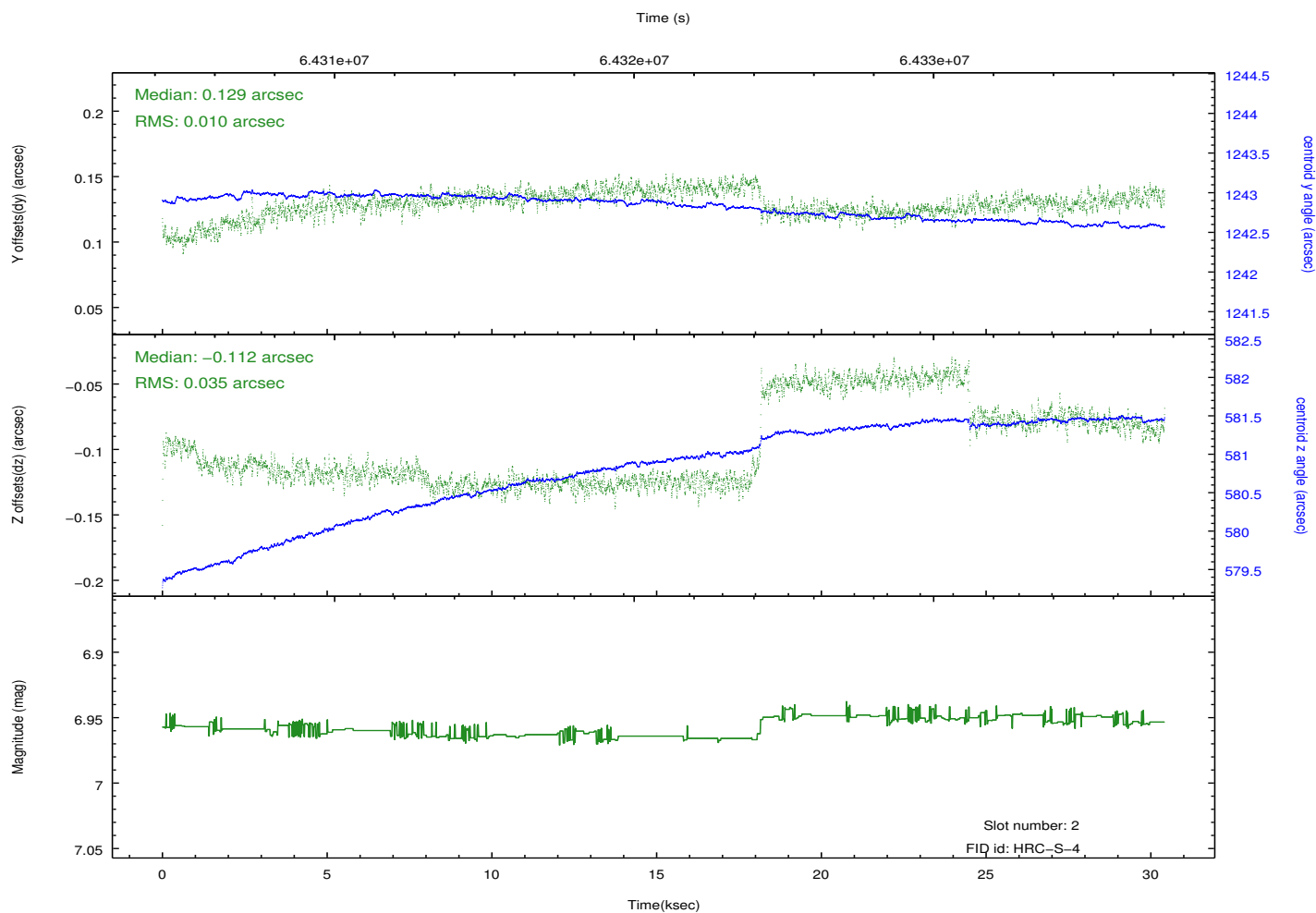
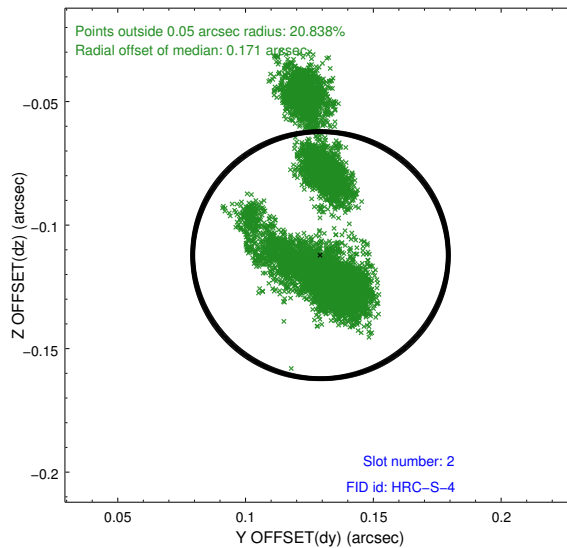
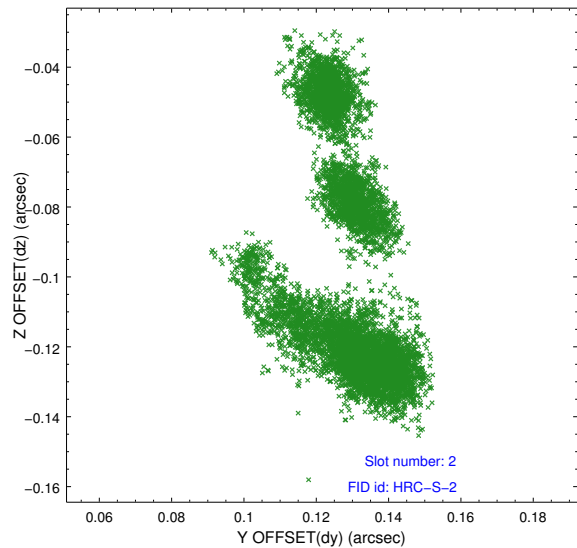
2.5.1 Slot 0



2.5.2 Slot 1

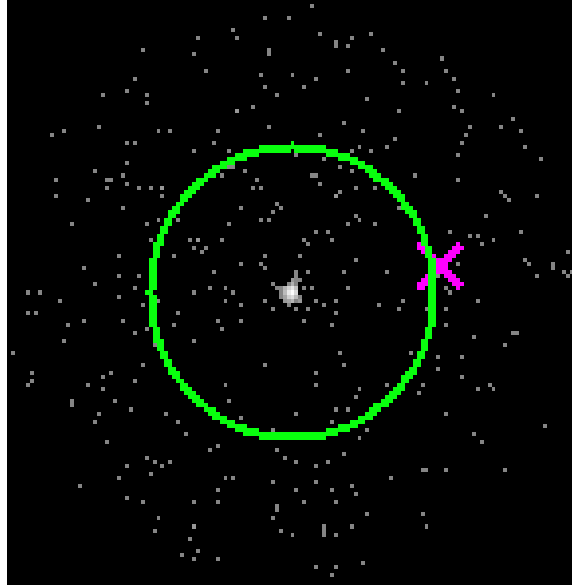


2.5.3 Slot 2

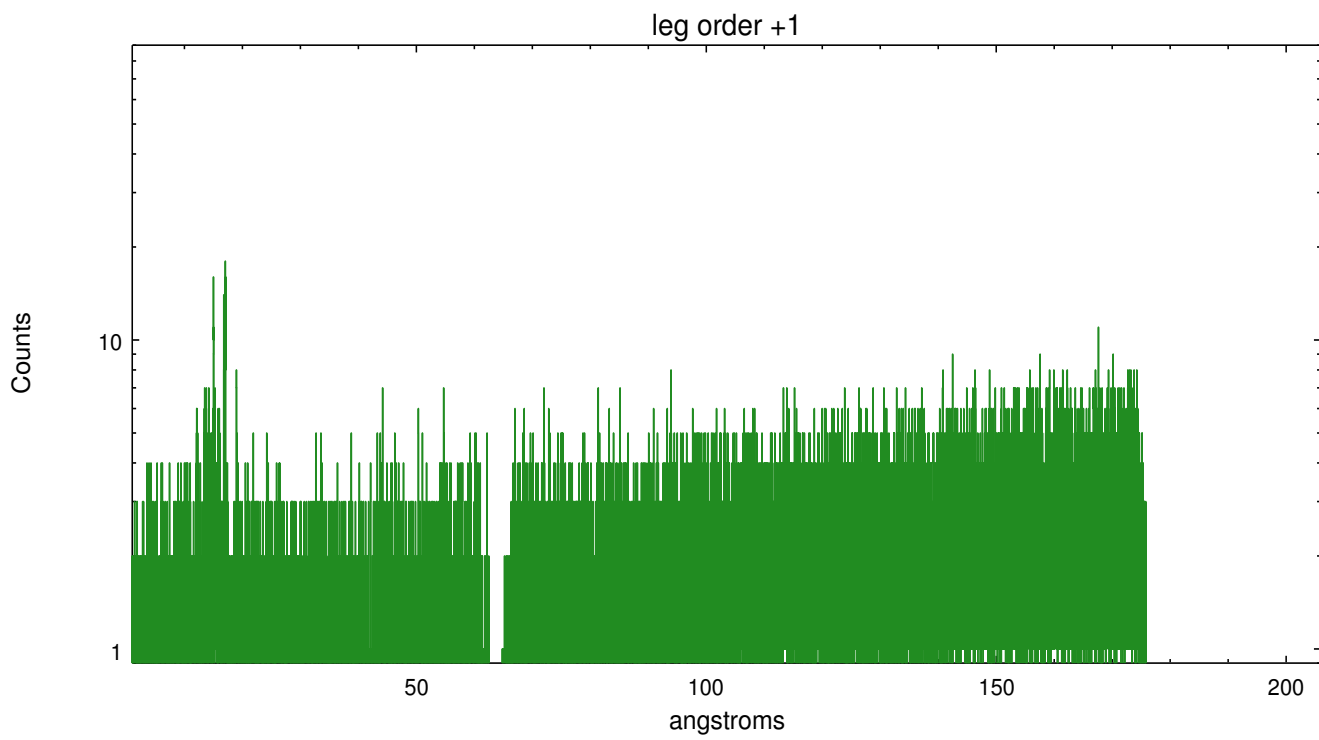
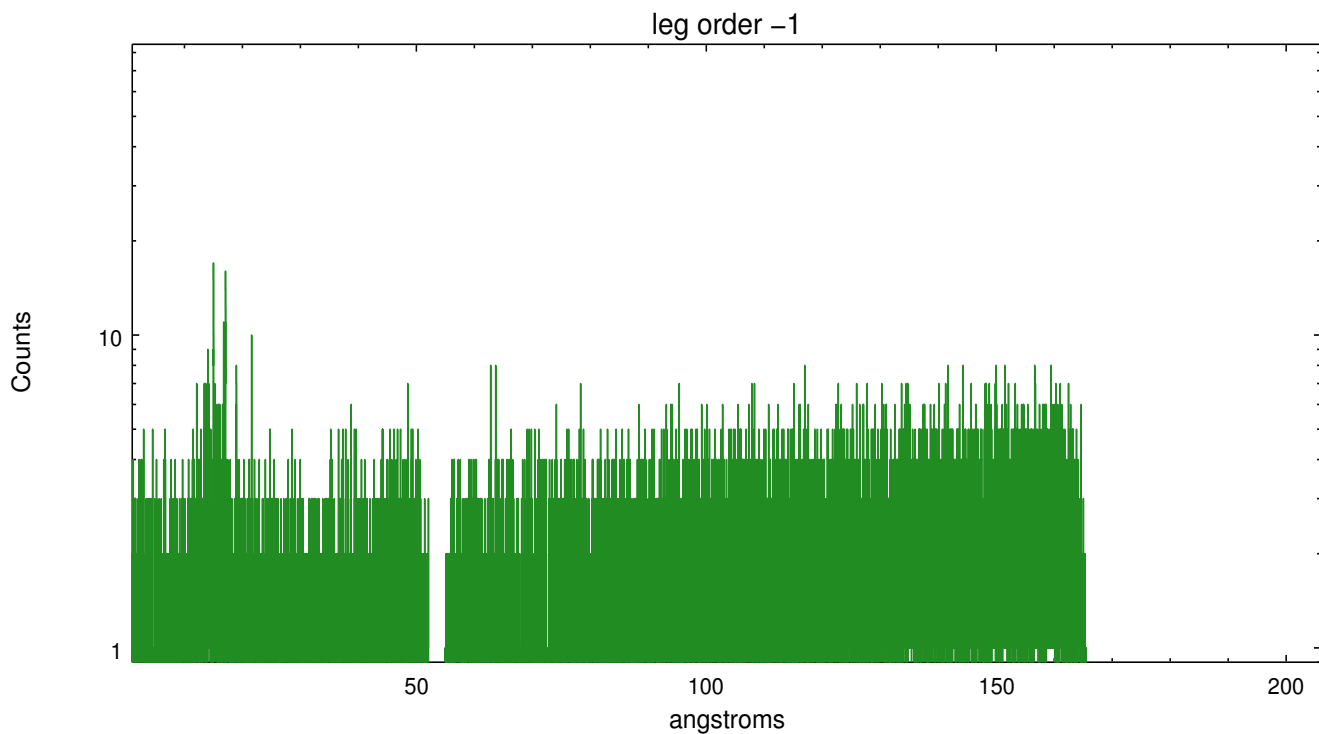


3 Gratings

3.1 LETG Arm



LETG Zero Order



A Summary

A.1 Status

V&V Scientist	Joy Nichols
V&V Date (YYYY-MM-DD)	2010.04.01
V&V Edition	1
V&V Disposition and Status	OK
V&V Charge Time	30.203

A.2 Comments

Target found at ra=08:39:11.703, dec=+65:01:15.29. Observer-supplied coordinates were not accurate.