

V&V Reference Report

L2 ASCDS Version : 8.4.5

Observation 2483 - L2 Version 4
Chandra X-Ray Center

L2 Processing Date : Sep 17 2012

Contents

1	Front	2
2	OBI	3
2.1	OBI	3
2.1.1	Images	3
2.1.2	Bias	3
2.1.3	Parameters	4
2.1.4	Events	4
2.2	Compared Parameters	5
2.3	Aspect	6
2.4	Star Slots	9
2.4.1	Slot 3	9
2.4.2	Slot 4	10
2.4.3	Slot 5	11
2.4.4	Slot 6	12
2.4.5	Slot 7	13
2.5	FID Slots	14
2.5.1	Slot 0	14
2.5.2	Slot 1	15
2.5.3	Slot 2	16
A	Summary	17
A.1	Status	17
A.2	Comments	17

1 Front

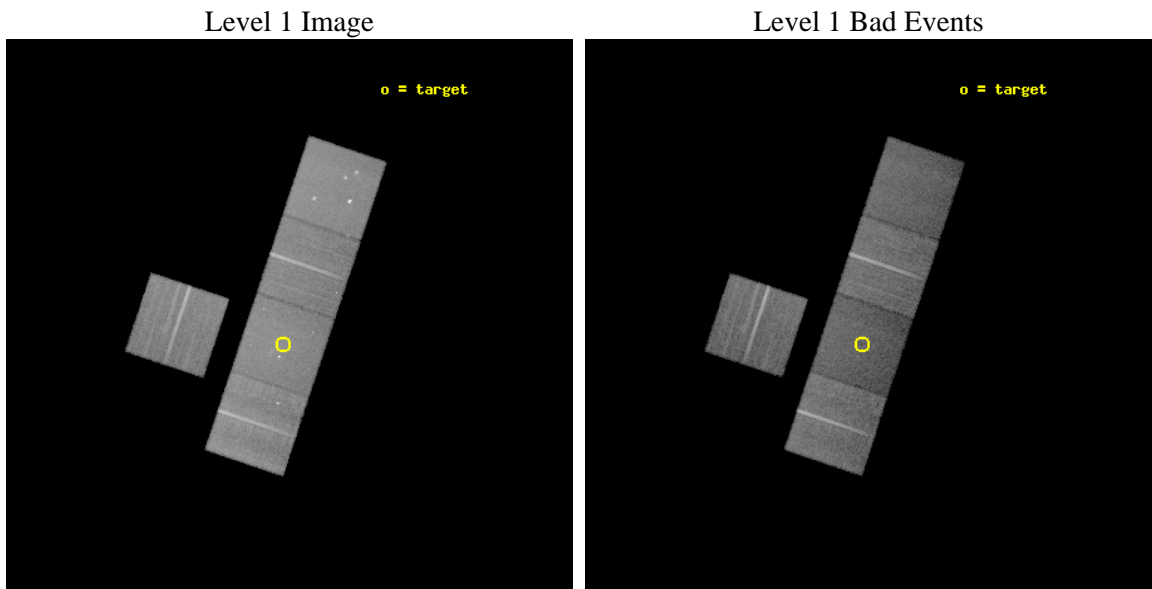
seq_num	900054	Sequence number
obs_id	2483	Observation id
title	DIFFERENTIAL X-RAY GUNN-PETERSON TEST	Proposal title
observer	Dr. Stephen Murray	Principal investigator
object	A2534	Source name
dtycycle	0	
cycle	P	events from which exps? Prim/Second/Both
ra_targ	346.9	Observer's specified target RA [deg]
dec_targ	-22.695806	Observer's specified target Dec [deg]
ra_nom	346.88899488818	Nominal RA [deg]
dec_nom	-22.659743802423	Nominal Dec [deg]
roll_nom	108.4852035894	Nominal Roll [deg]
revision	4	Processing version of data
ontime	27289.258987278	Sum of GTIs [s]
liveltime	26932.704728549	Livetime [s]
ontime3	27289.258957371	Sum of GTIs [s]
ontime5	27292.399947524	Sum of GTIs [s]
ontime6	27289.258987278	Sum of GTIs [s]
ontime7	27289.258987278	Sum of GTIs [s]
ontime8	27282.977166474	Sum of GTIs [s]
l2events	218251	Number of level 2 events



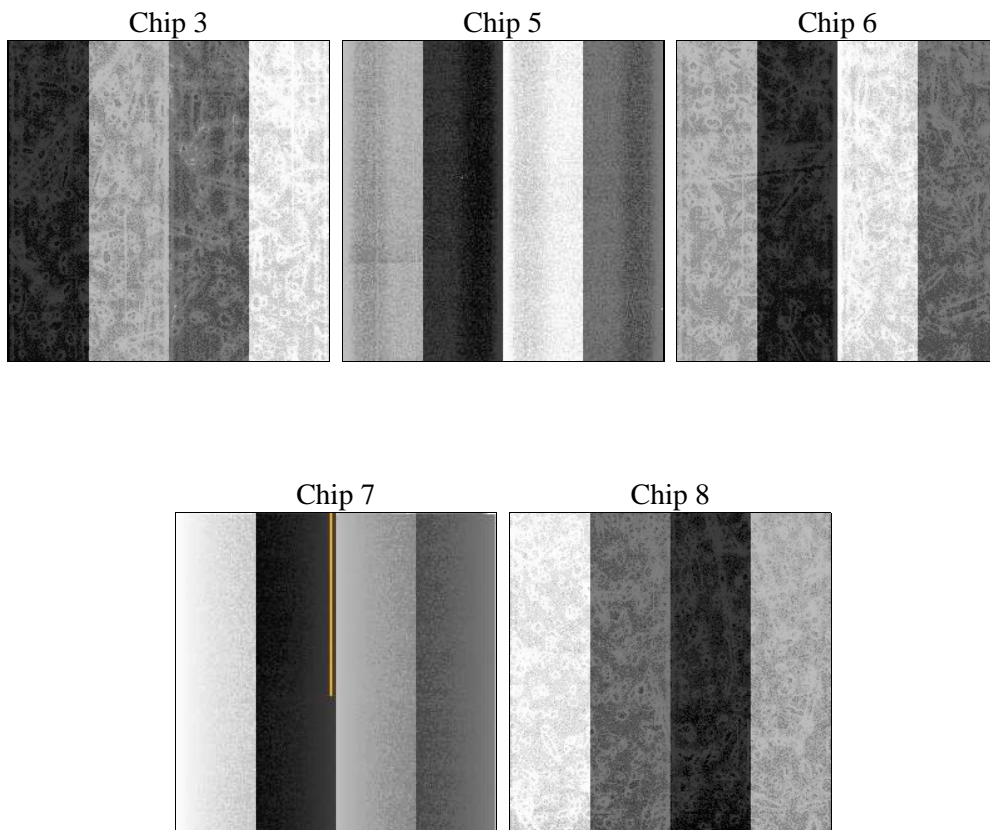
2 OBI

2.1 OBI

2.1.1 Images



2.1.2 Bias



2.1.3 Parameters

obi_num	0	Obi number	sched_exp_time	27200.000000	[s] Scheduled observation exposure time
ascdsver	8.4.5	Processing system revision	ontime	27289.258987278	Sum of GTIs [s]
caldbver	4.5.1.1	 	ontime3	27289.258957371	Sum of GTIs [s]
date	2012-09-17T22:50:42	Date and time of file creation	ontime5	27292.399947524	Sum of GTIs [s]
revision	4	Processing version of data	ontime6	27289.258987278	Sum of GTIs [s]
			ontime7	27289.258987278	Sum of GTIs [s]
			ontime8	27282.977166474	Sum of GTIs [s]
			l1events	887529	Number of level 1 events

2.1.4 Events

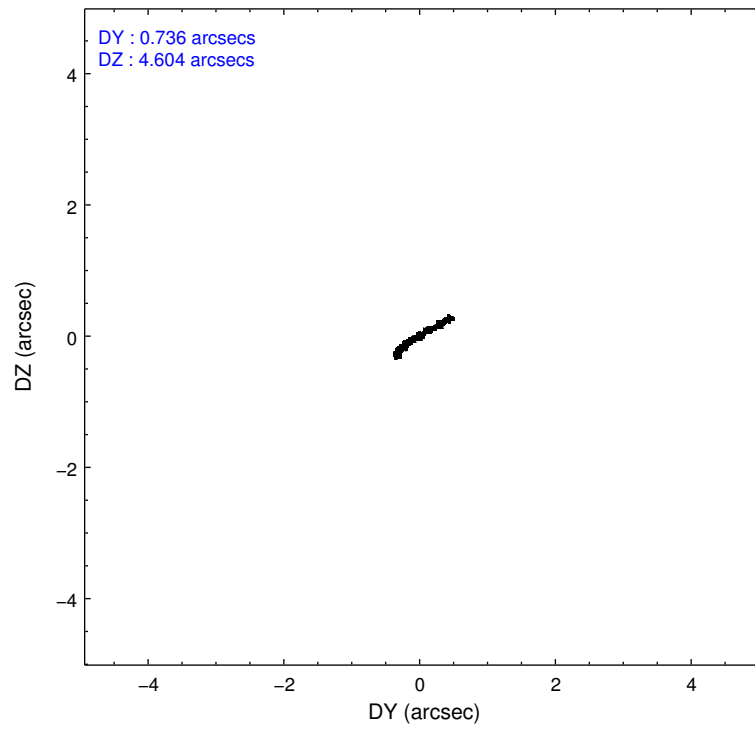
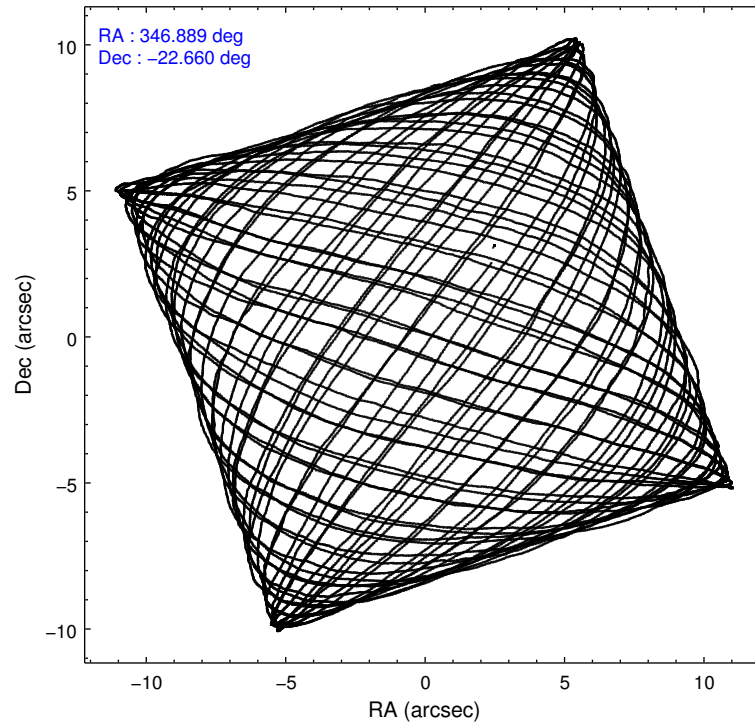
	ccd 3	ccd 5	ccd 6	ccd 7	ccd 8
level 1 events	157107	199847	162588	172264	195723
rejected events	143199	96559	145733	86212	152215
rejected %	91%	48%	89%	50%	77%

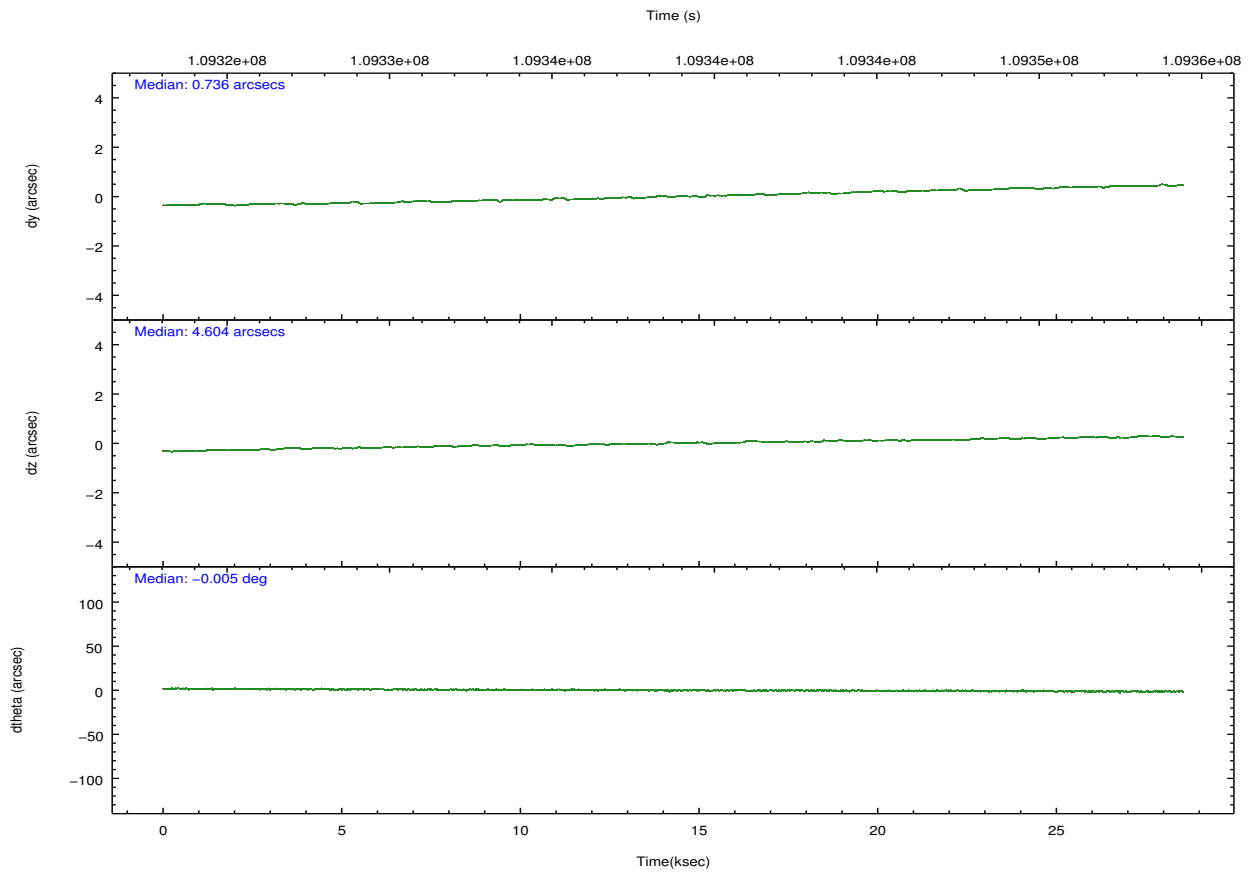
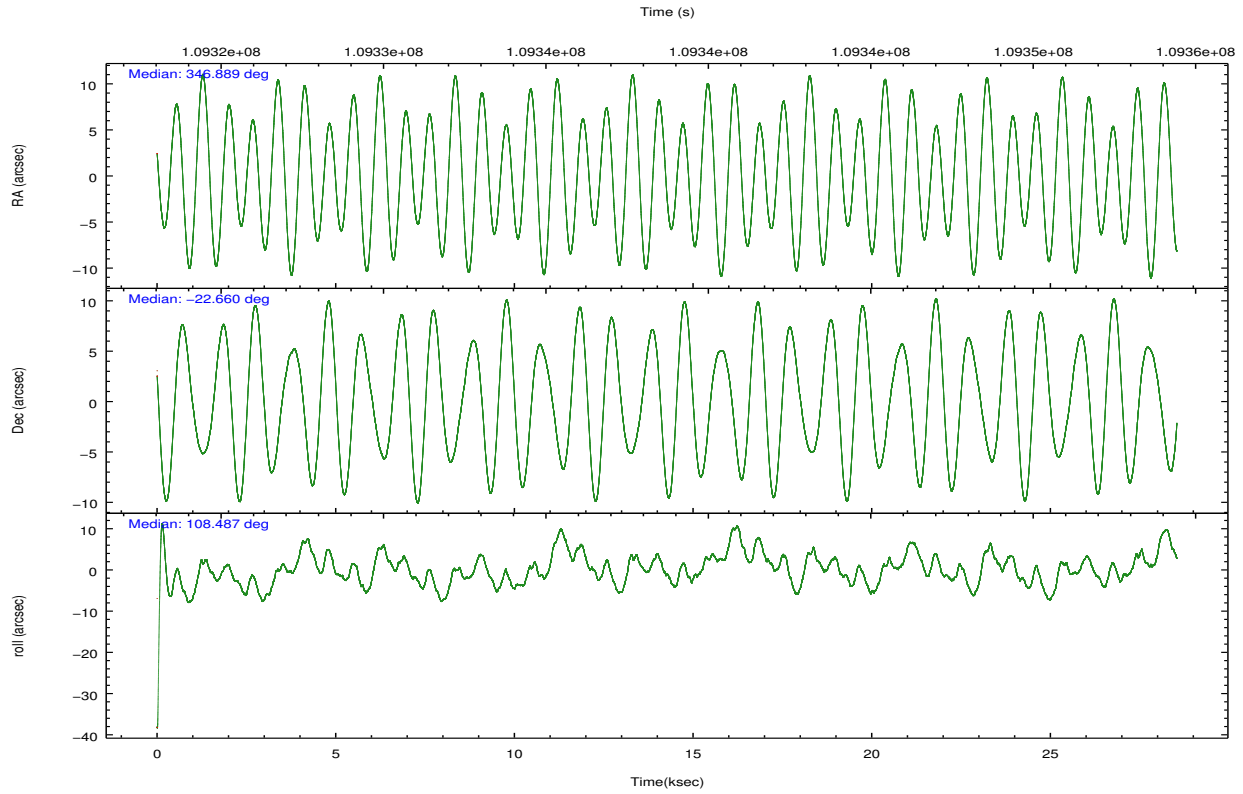
	ccd 3	ccd 5	ccd 6	ccd 7	ccd 8
grade 0 events	5043	17074	6448	11676	13973
	3%	8%	3%	6%	7%
grade 1 events	60	240	68	146	136
	0%	0%	0%	0%	0%
grade 2 events	2840	27392	3420	18071	8995
	1%	13%	2%	10%	4%
grade 3 events	1696	4892	1867	8682	4866
	1%	2%	1%	5%	2%
grade 4 events	1625	4758	1817	8554	4556
	1%	2%	1%	4%	2%
grade 5 events	5036	16012	5543	17121	7634
	3%	8%	3%	9%	3%
grade 6 events	2707	49185	3304	39080	11121
	1%	24%	2%	22%	5%
grade 7 events	138100	80294	140121	68934	144442
	87%	40%	86%	40%	73%

2.2 Compared Parameters

Parameter	Planned	Actual	Parameter	Planned	Actual
Instrument	ACIS	ACIS	Obspar format version number	7	7
Detector	ACIS-35678	ACIS-35678	Obspar file type	PREDICTED	ACTUAL
Grating	NONE	NONE	Obspar update status	NONE	UPDATED
Data mode	VFAINT	VFAINT	Number of optional ACIS chips dropped	0	0
Observation mode	POINTING	POINTING	On-chip summing requested	N	N
[deg] Pointing RA	346.911351	346.8889948881836	Subarray requested	NONE	NONE
[deg] Pointing Dec	-22.677589	-22.65974380242318	Alternating exposures requested	N	N
[deg] Pointing Roll	108.337213	108.4852035893959	[s] Primary exposure time	0.000000	3.1
[mm] SIM focus pos	-0.684267	-0.6828225247311905			
[mm] SIM defocus	0	0.001444936568705701			
[mm] SIM translation stage pos	-190.132523	-190.1425803651734			
[mm] SIM translation stage offset	0	0.01005778216563158			
[s] Observation start time (MET)	109325797.184000	109324266.77982			
Observation start date	2001-06-19T08:15:33	2001-06-19T07:51:06			
[s] Observation end time (MET)	109352997.184000	109353336.29345			
Observation end date	2001-06-19T15:48:53	2001-06-19T15:55:36			
Read mode	TIMED	TIMED			

2.3 Aspect



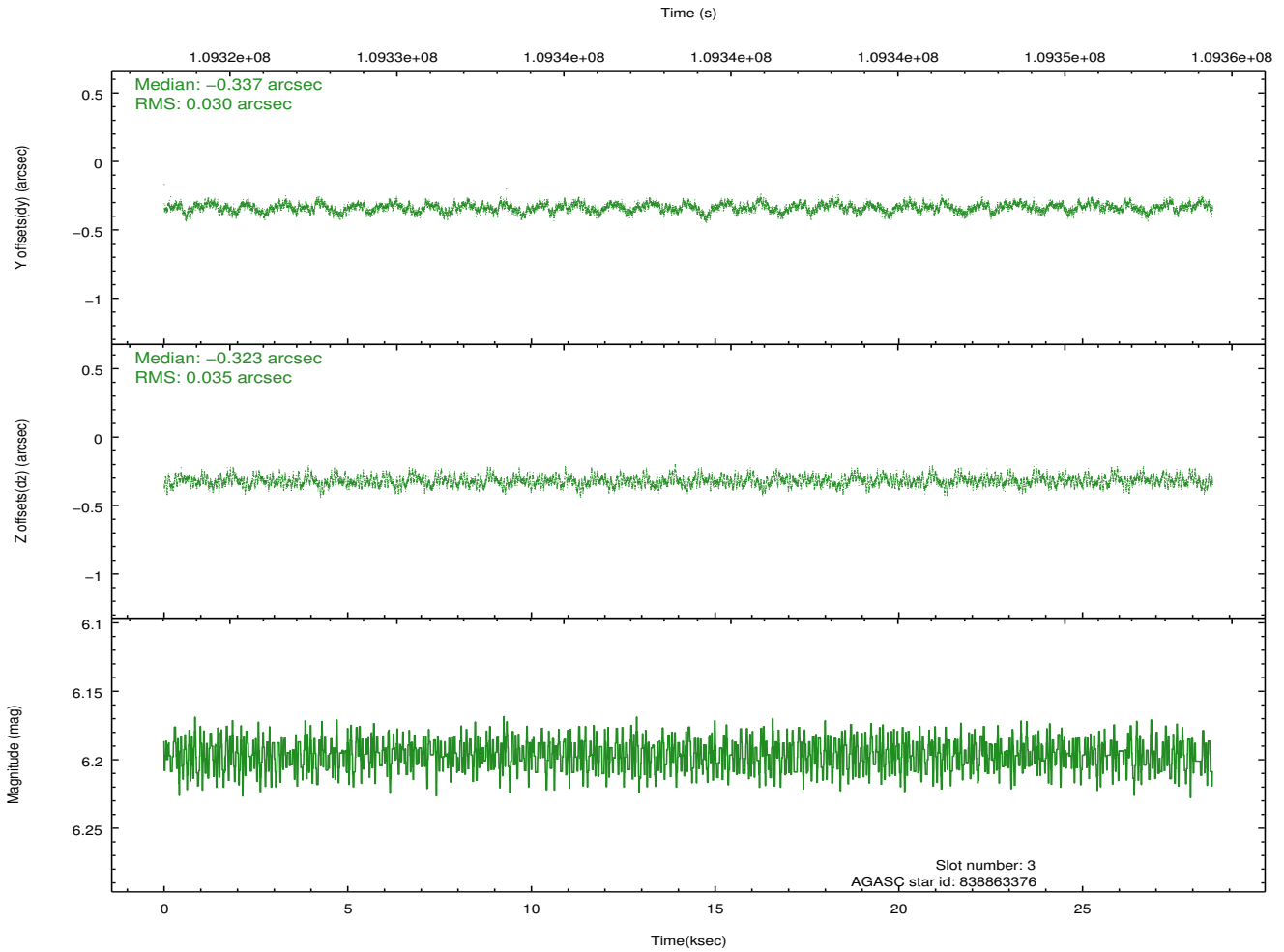
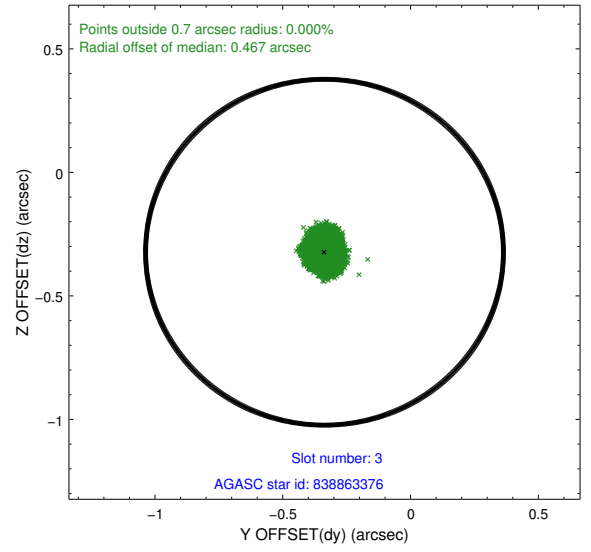
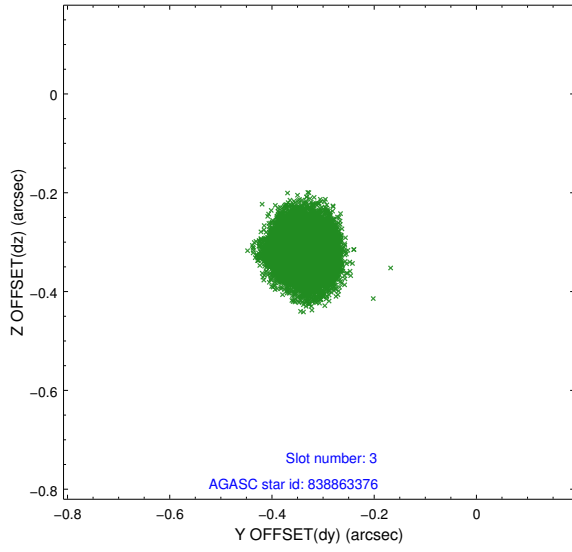


Slot Statistics

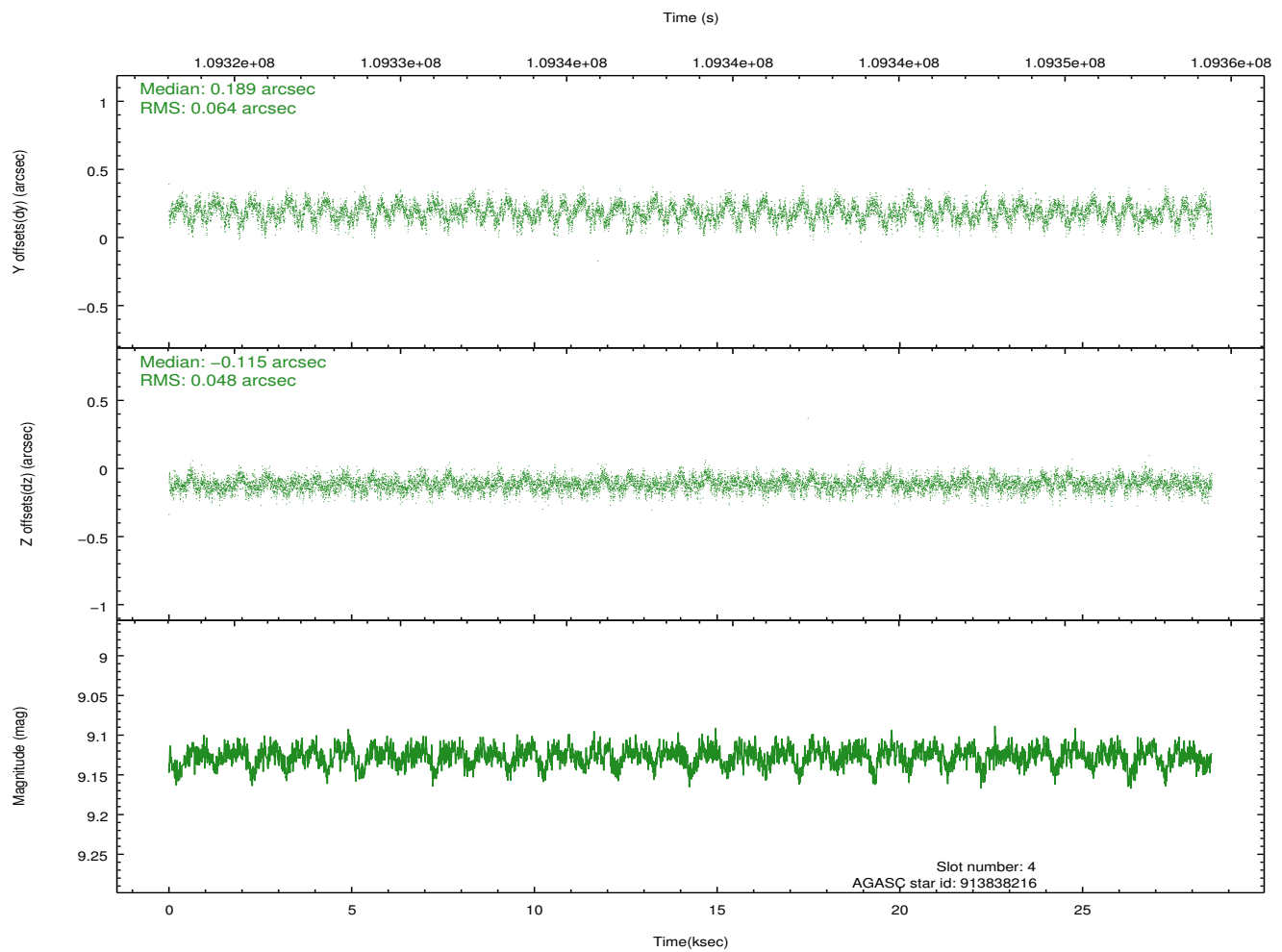
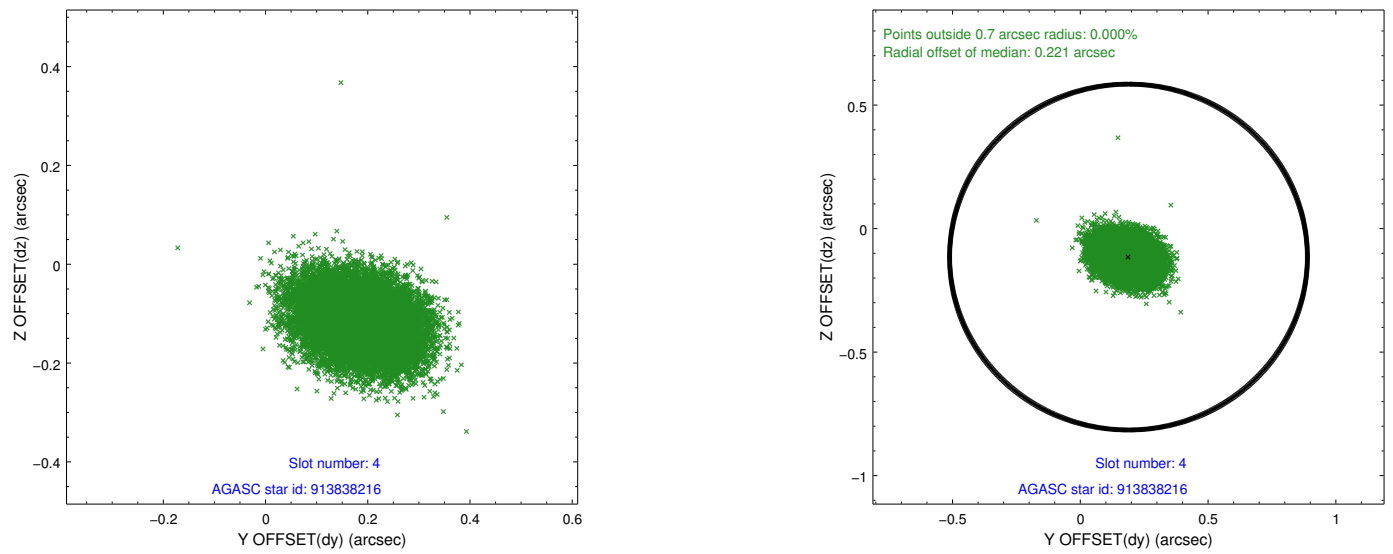
slot	status	id	mag	n_pts	med_dy	med_dz	dr1	dr2	ra	dec	mean_y	mean_z
0	FID	ACIS-S-2	7.11	6959	-0.039	-0.018	0.009	0.013	0.000000	0.000000	-753.35	-1725.68
1	FID	ACIS-S-4	7.20	6958	0.006	0.024	0.007	0.012	0.000000	0.000000	2159.91	182.79
2	FID	ACIS-S-5	7.24	6960	0.002	0.003	0.011	0.018	0.000000	0.000000	-1806.07	176.49
3	GUIDE	838863376	6.20	13920	-0.337	-0.323	0.050	0.079	346.356461	-22.486846	1229.22	1536.65
4	GUIDE	913838216	9.13	13918	0.189	-0.115	0.086	0.137	346.779414	-23.159457	-1509.31	960.27
5	GUIDE	913834240	9.25	13915	0.076	0.017	0.079	0.132	346.690223	-22.775802	-104.96	808.17
6	GUIDE	913843072	9.60	13913	0.273	0.170	0.089	0.143	347.177644	-23.136268	-1844.99	-316.85
7	GUIDE	839001536	10.40	13913	-0.200	0.249	0.188	0.313	347.234677	-21.972765	2067.72	-1822.50

2.4 Star Slots

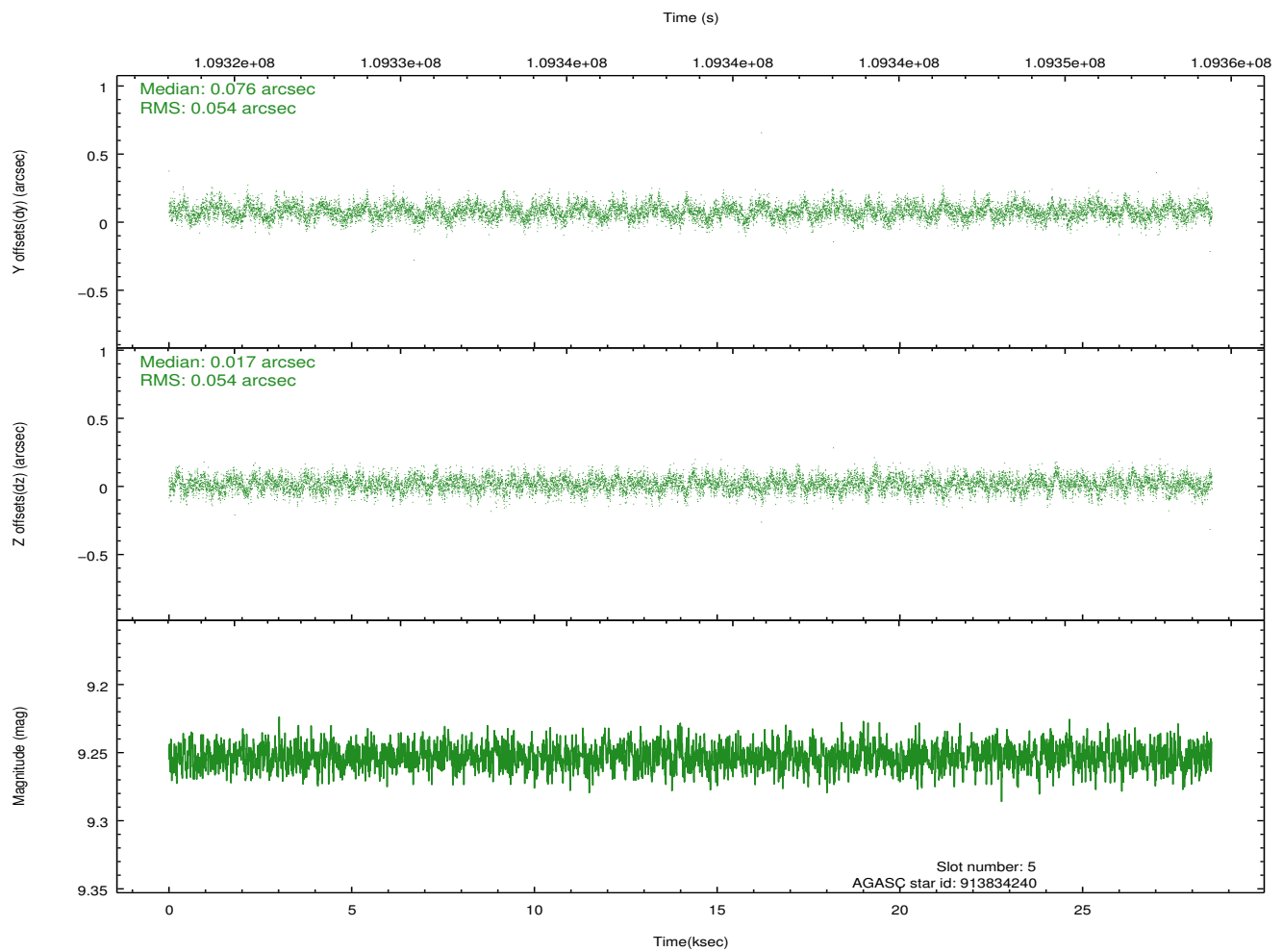
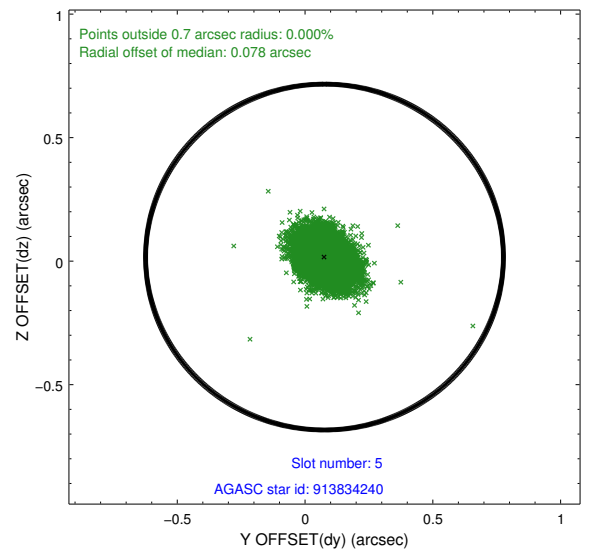
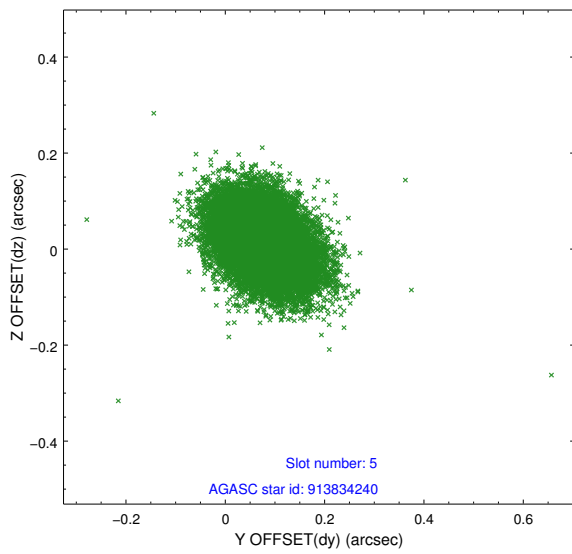
2.4.1 Slot 3



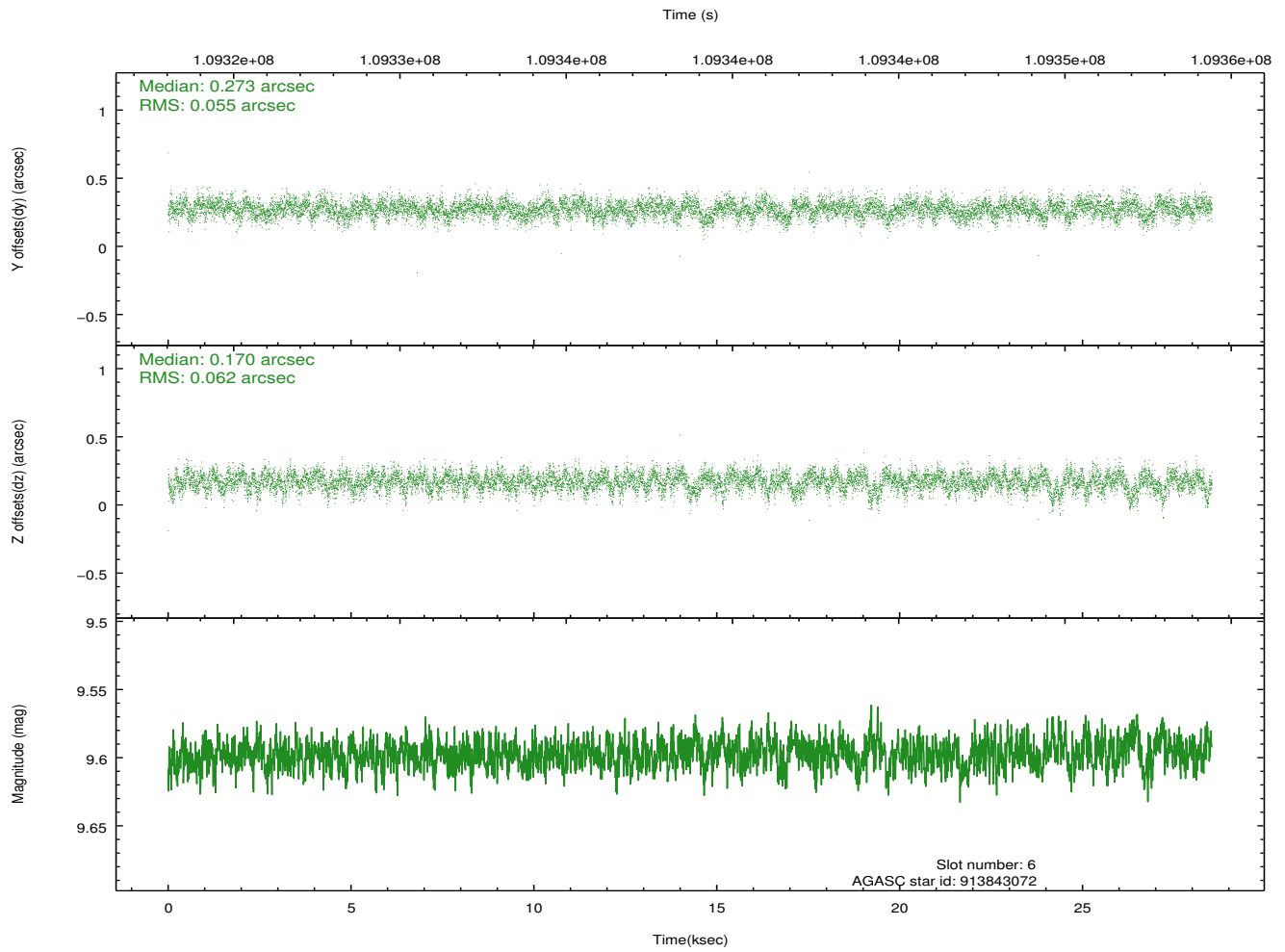
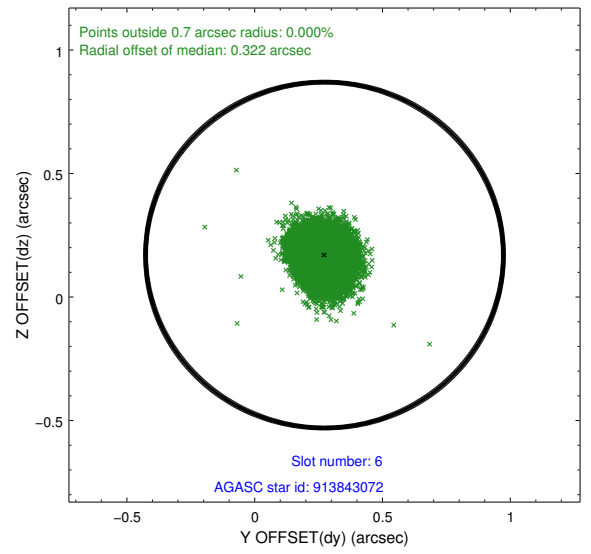
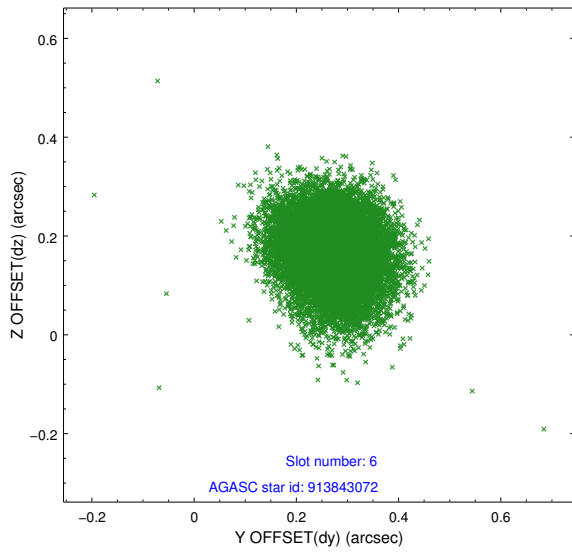
2.4.2 Slot 4



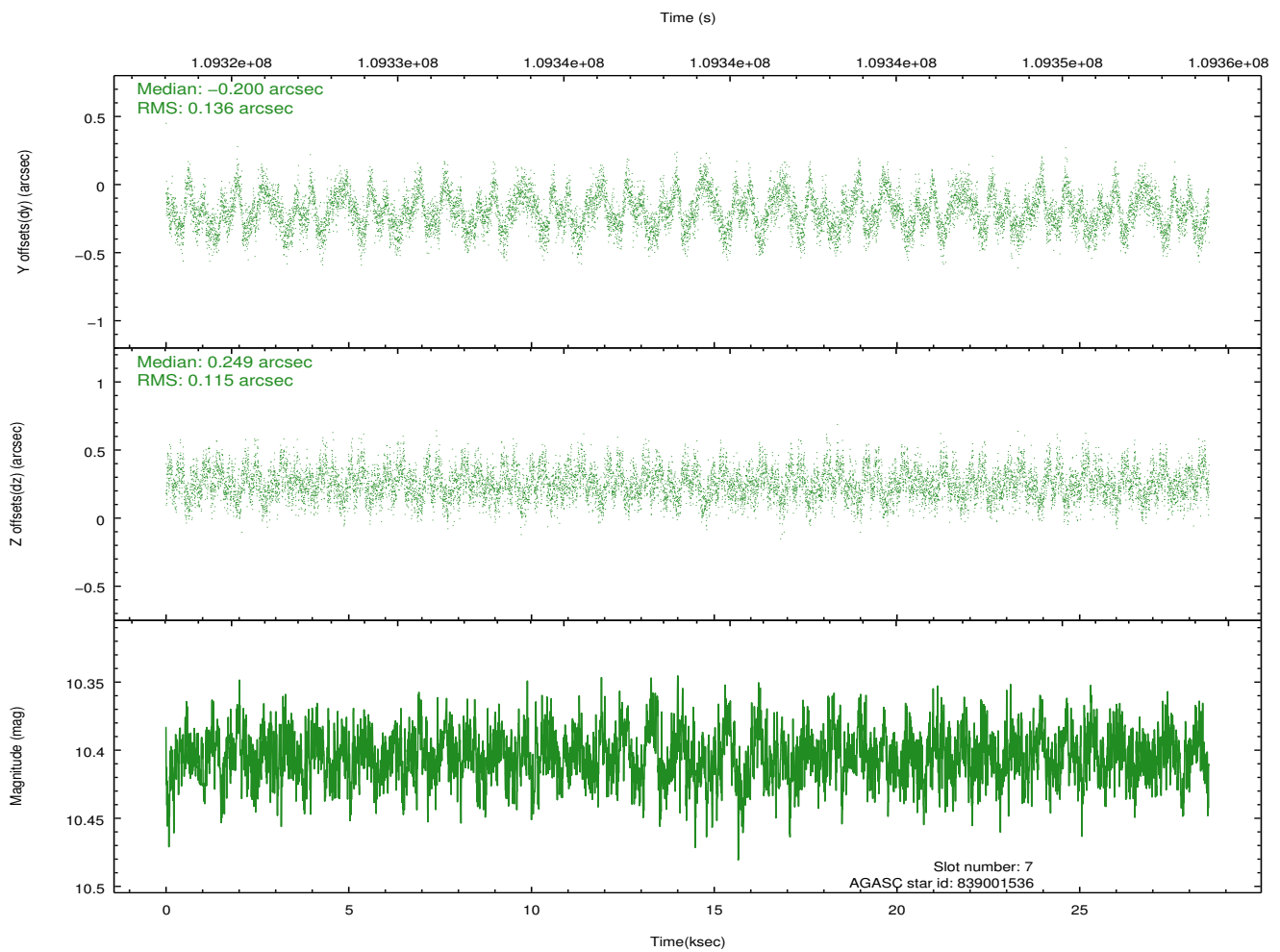
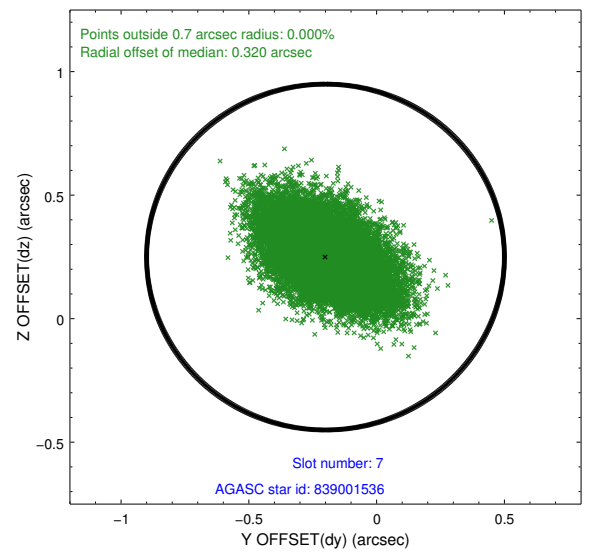
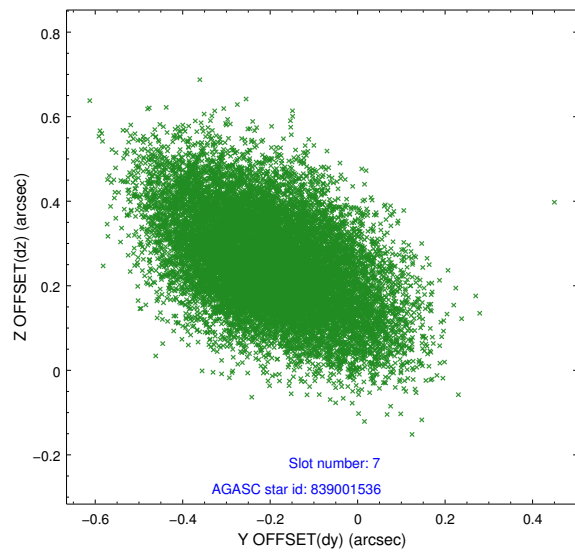
2.4.3 Slot 5



2.4.4 Slot 6

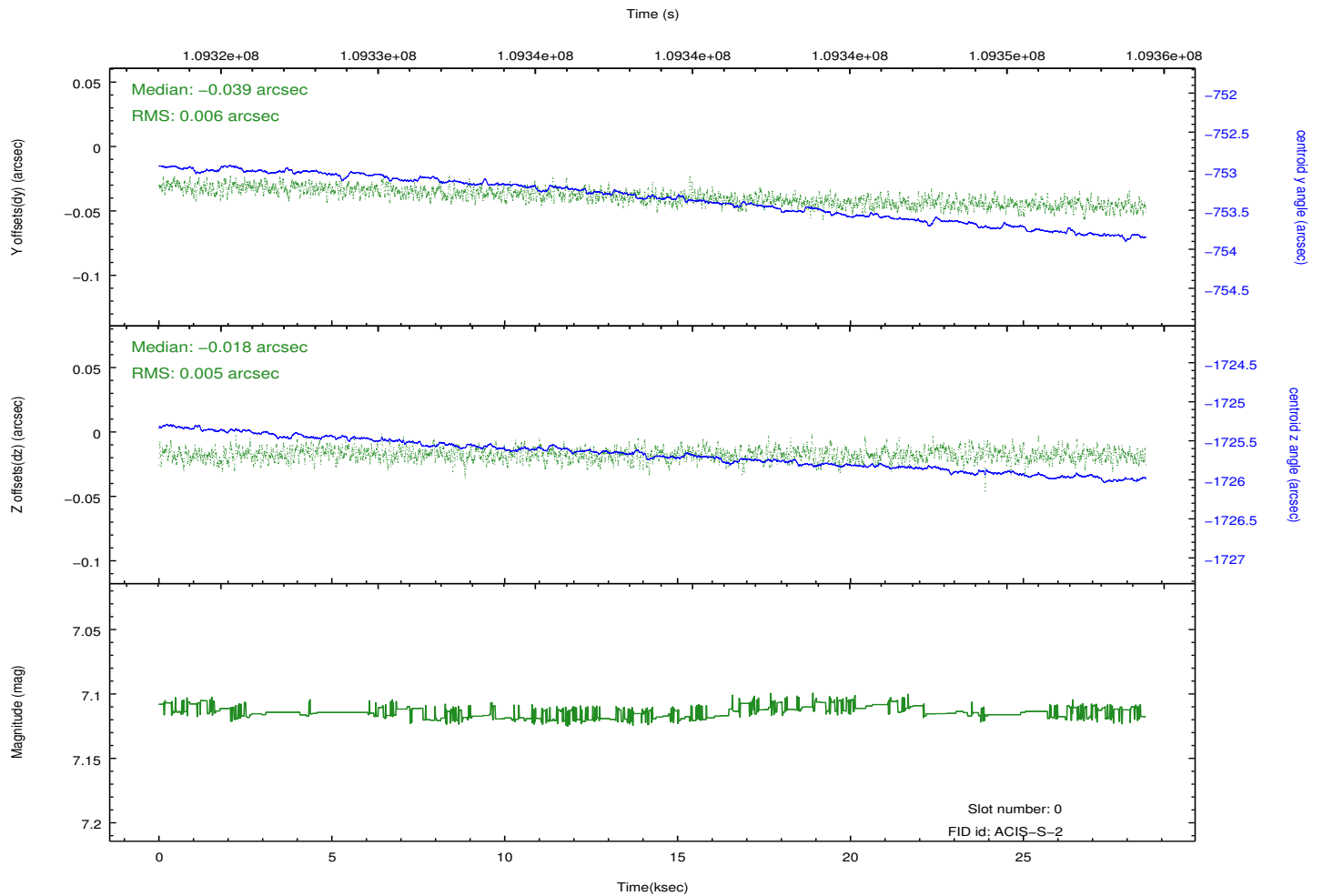
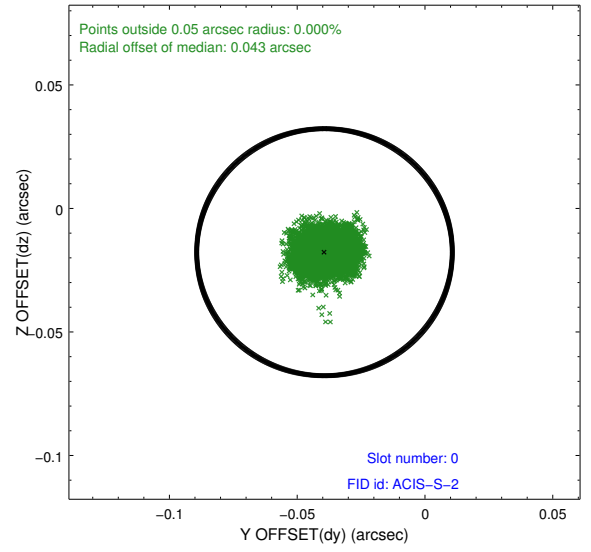
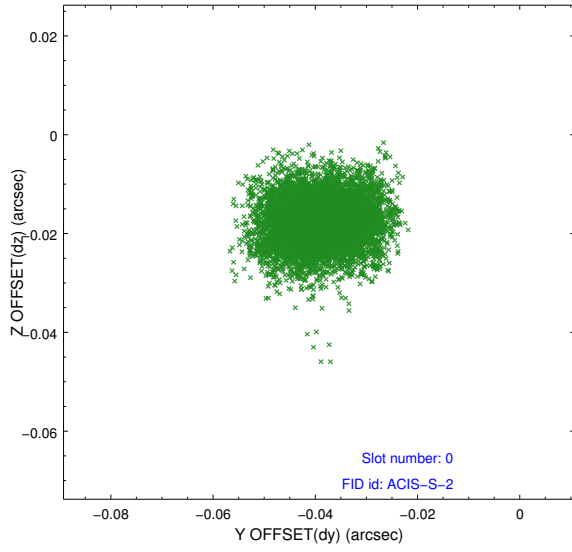


2.4.5 Slot 7

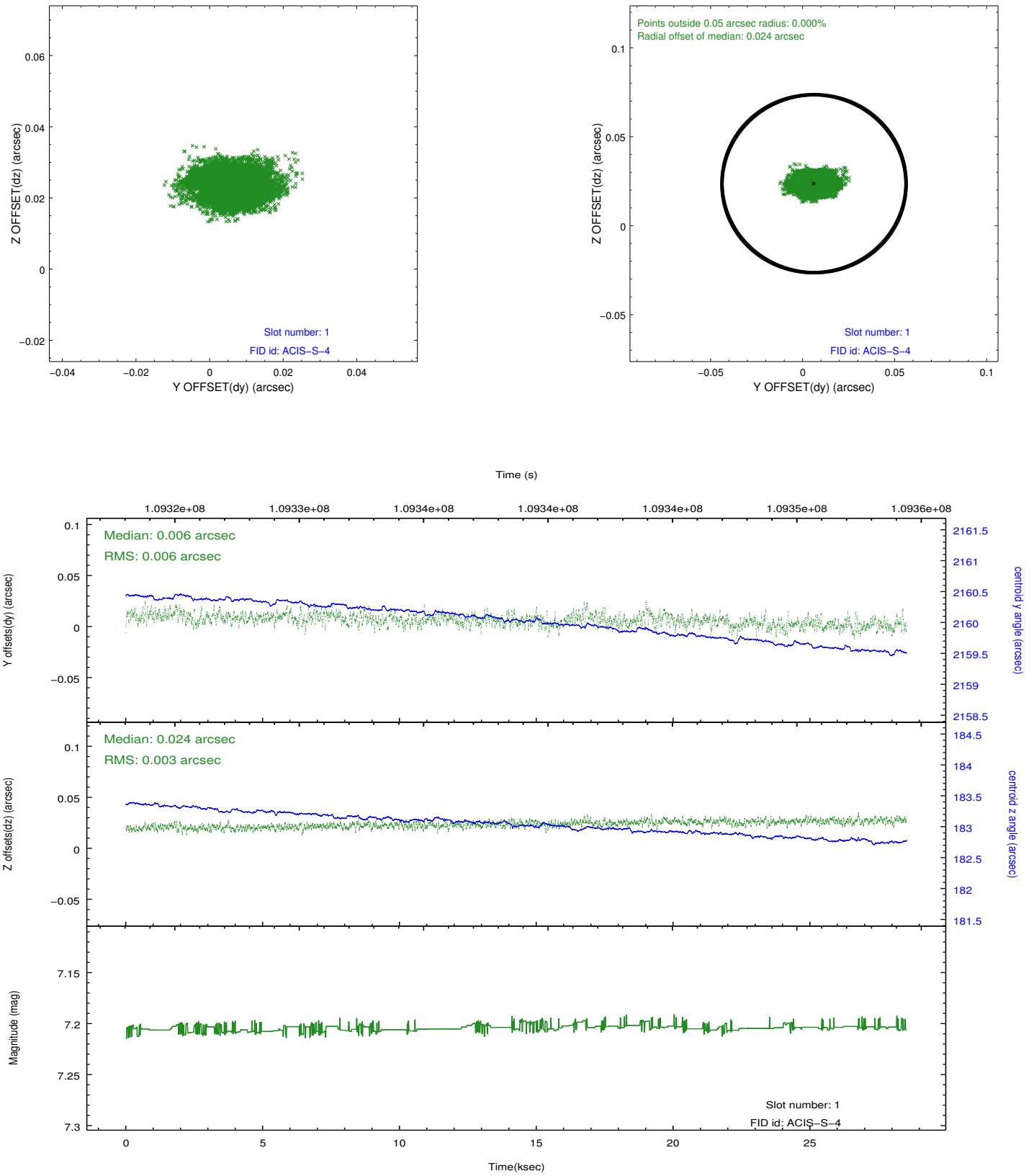


2.5 FID Slots

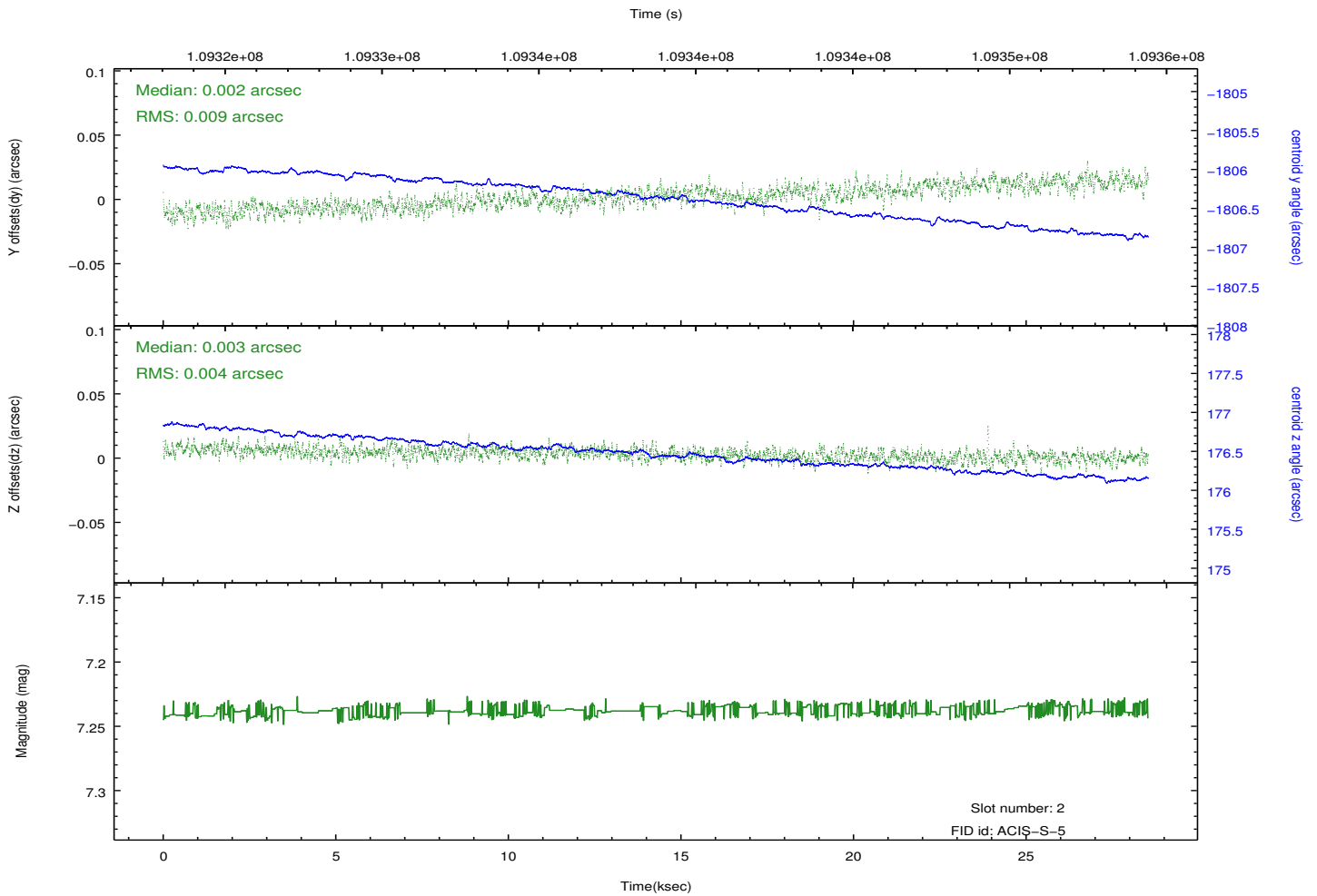
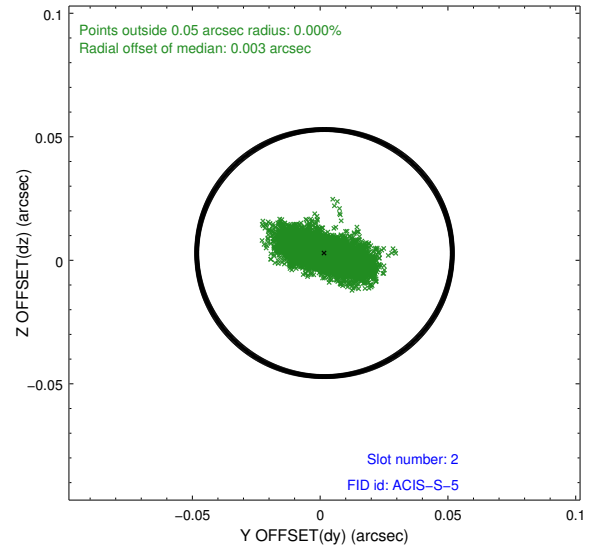
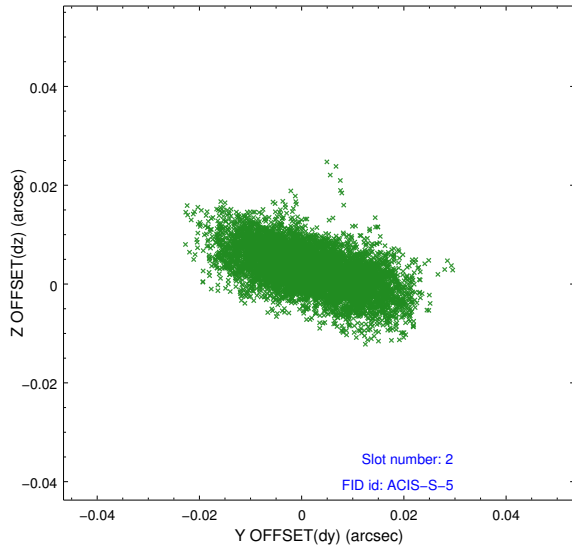
2.5.1 Slot 0



2.5.2 Slot 1



2.5.3 Slot 2



A Summary

A.1 Status

V&V Scientist	Beth Sundheim
V&V Date (YYYY-MM-DD)	2012.09.20
V&V Edition	1
V&V Disposition and Status	OK
V&V Charge Time	27.3

A.2 Comments