

V&V Reference Report

L2 ASCDS Version : 8.4.5

Observation 2803 - L2 Version 3
Chandra X-Ray Center

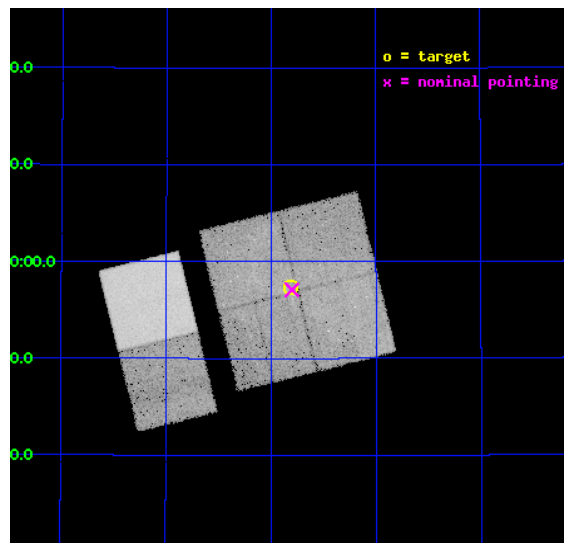
L2 Processing Date : Oct 1 2012

Contents

1	Front	2
2	OBI	3
2.1	OBI	3
2.1.1	Images	3
2.1.2	Bias	3
2.1.3	Parameters	4
2.1.4	Events	4
2.2	Compared Parameters	5
2.3	Aspect	6
2.4	Star Slots	9
2.4.1	Slot 3	9
2.4.2	Slot 4	10
2.4.3	Slot 5	11
2.4.4	Slot 6	12
2.4.5	Slot 7	13
2.5	FID Slots	14
2.5.1	Slot 0	14
2.5.2	Slot 1	15
2.5.3	Slot 2	16
A	Summary	17
A.1	Status	17
A.2	Comments	17

1 Front

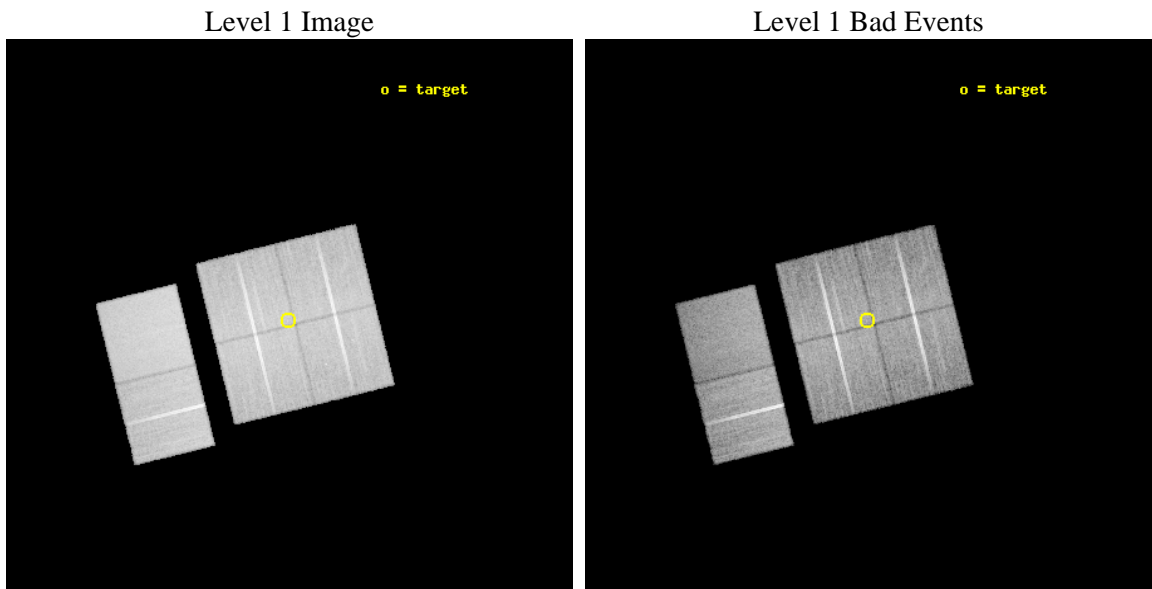
seq_num	500253	Sequence number
obs_id	2803	Observation id
title	A CHANDRA SURVEY FOR COMPACT OBJECTS IN SUPERNOVA REMNANTS	Proposa
observer	Prof. Shrinivas Kulkarni	Principal investigator
object	G166.0+4.2	Source name
dtcycle	0	
cycle	P	events from which exps? Prim/Second/Both
ra_targ	81.704167	Observer's specified target RA [deg]
dec_targ	42.955278	Observer's specified target Dec [deg]
ra_nom	81.700322031547	Nominal RA [deg]
dec_nom	42.951504925836	Nominal Dec [deg]
roll_nom	256.1888468857	Nominal Roll [deg]
revision	3	Processing version of data
ontime	29963.671247005	Sum of GTIs [s]
livetime	29584.253199719	Livetime [s]
ontime0	29963.54812701	Sum of GTIs [s]
ontime1	29963.589167014	Sum of GTIs [s]
ontime2	29963.630207017	Sum of GTIs [s]
ontime3	29963.671247005	Sum of GTIs [s]
ontime6	29963.753327012	Sum of GTIs [s]
ontime7	29963.712287009	Sum of GTIs [s]
l2events	214738	Number of level 2 events



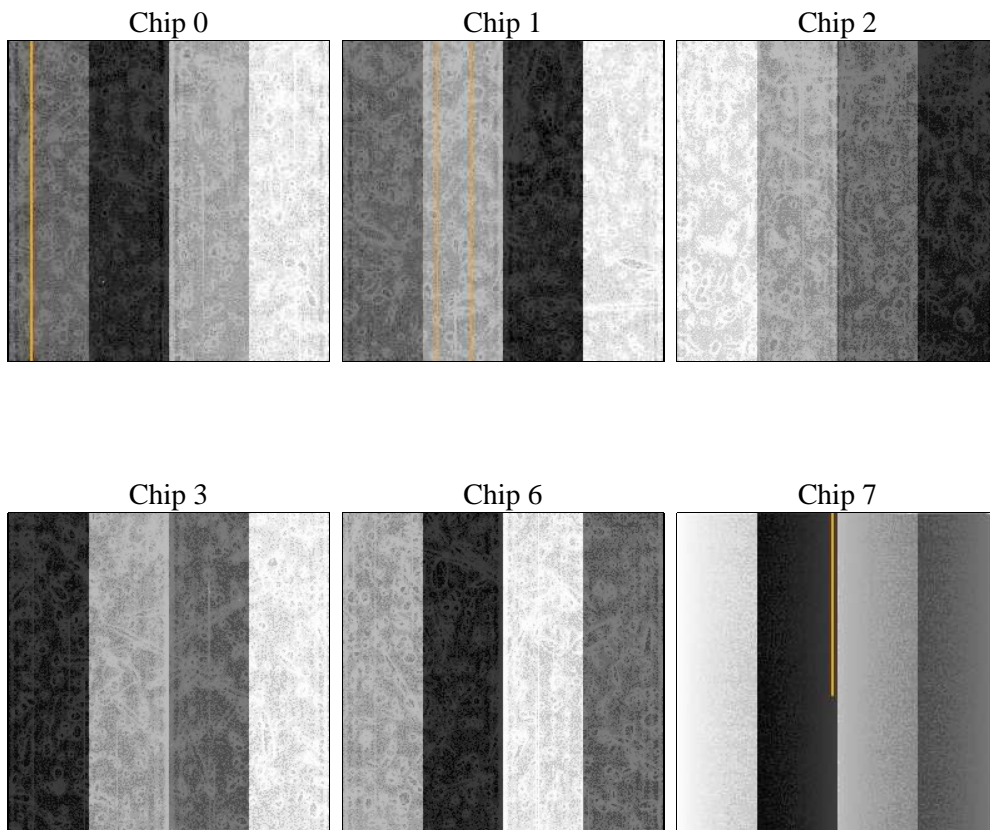
2 OBI

2.1 OBI

2.1.1 Images



2.1.2 Bias



2.1.3 Parameters

obi_num	0	Obi number	sched_exp_time	30000.000000	[s] Scheduled observation exposure time
ascdsver	8.4.5	Processing system revision	ontime	29963.671247005	Sum of GTIs [s]
caldbver	4.5.2	 	ontime0	29963.54812701	Sum of GTIs [s]
date	2012-10-01T06:31:52	Date and time of file creation	ontime1	29963.589167014	Sum of GTIs [s]
revision	3	Processing version of data	ontime2	29963.630207017	Sum of GTIs [s]
			ontime3	29963.671247005	Sum of GTIs [s]
			ontime6	29963.753327012	Sum of GTIs [s]
			ontime7	29963.712287009	Sum of GTIs [s]
			l1events	1182513	Number of level 1 events

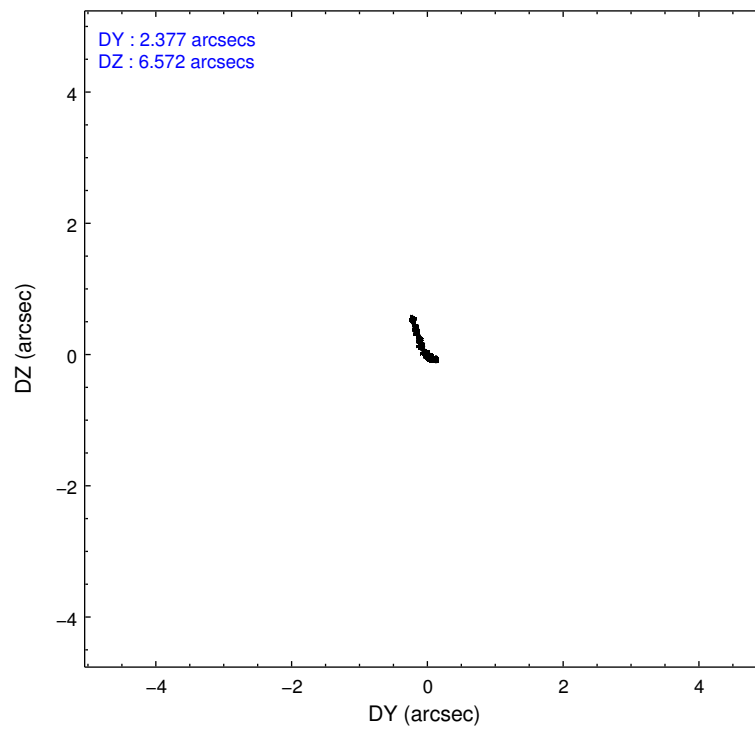
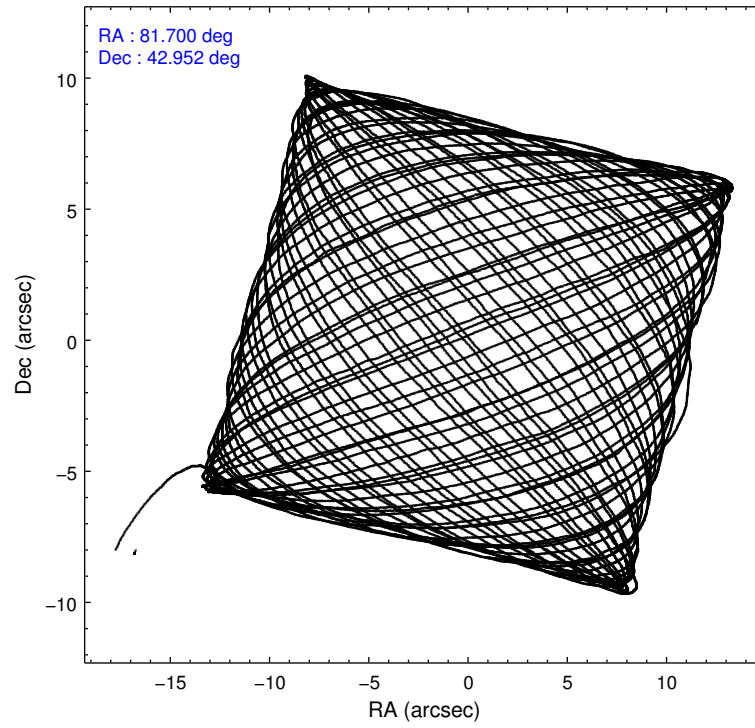
2.1.4 Events

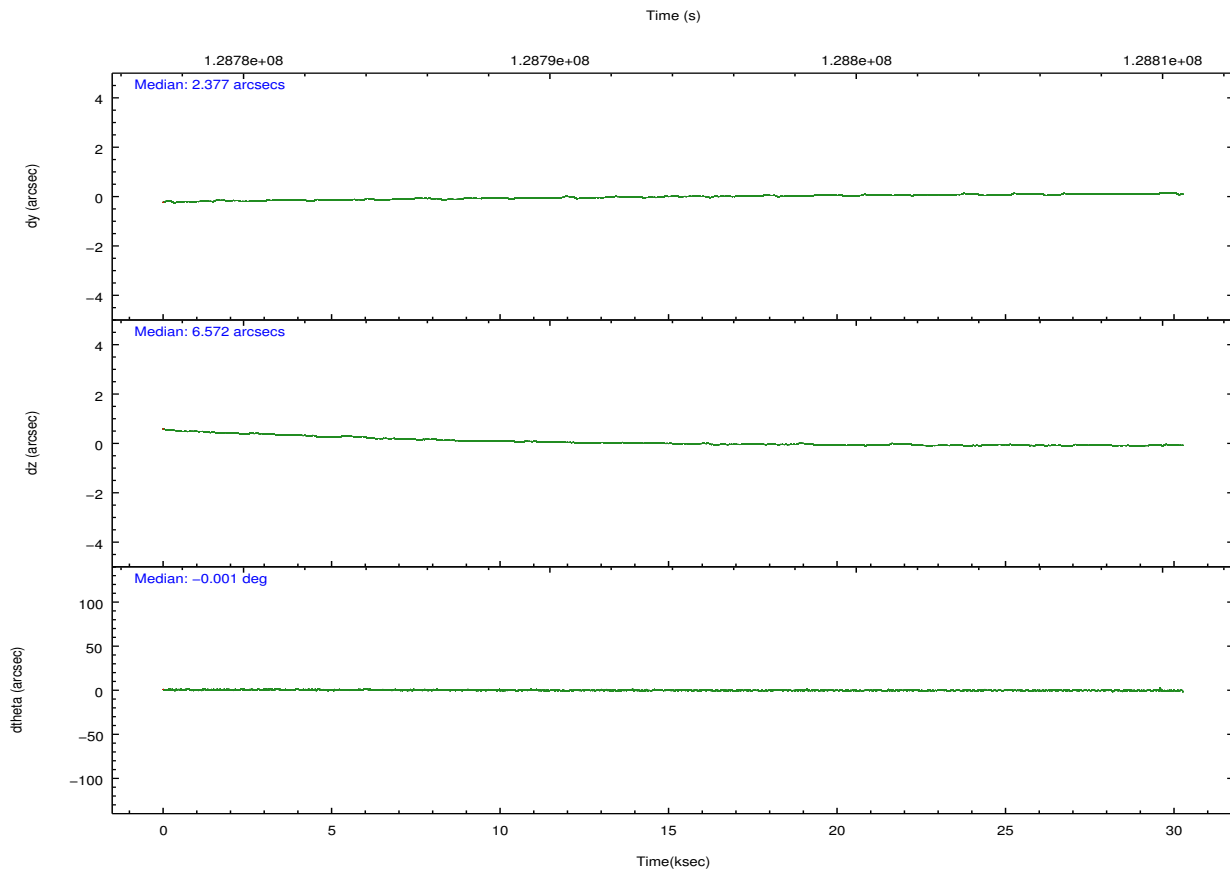
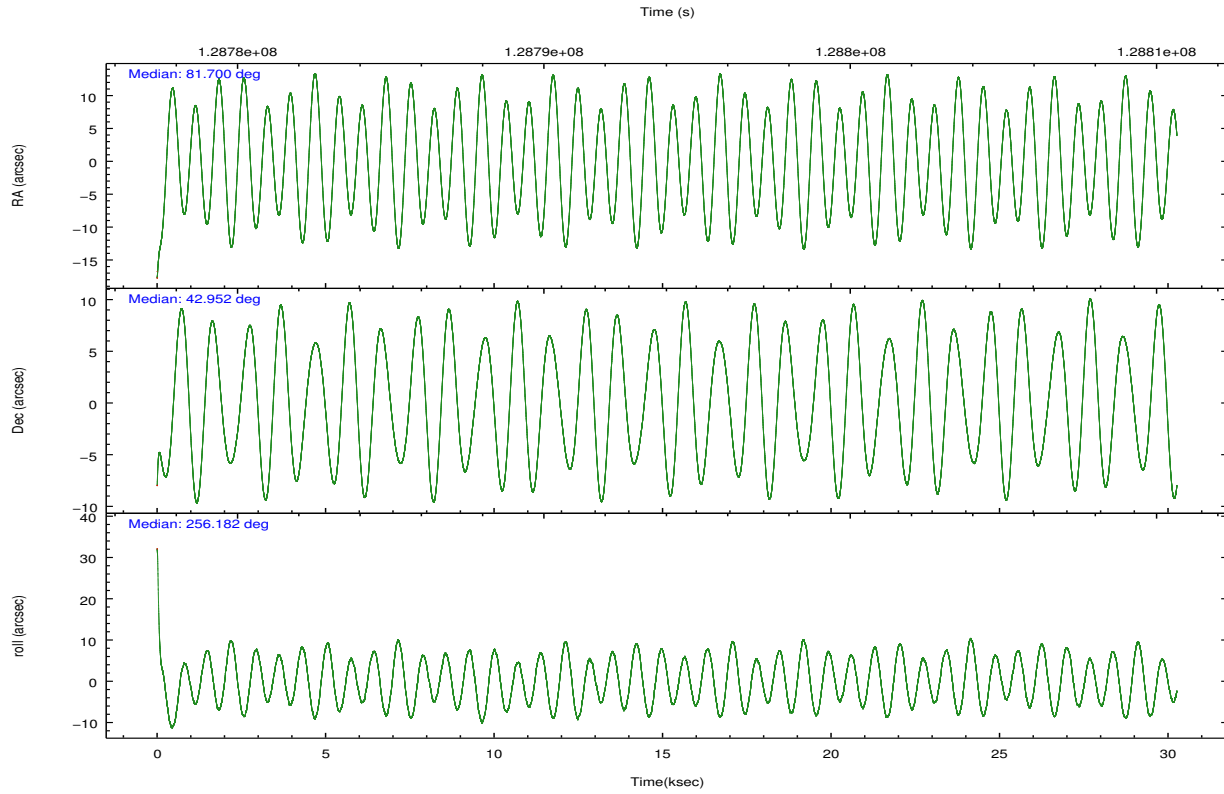
	ccd 0	ccd 1	ccd 2	ccd 3	ccd 6	ccd 7		ccd 0	ccd 1	ccd 2	ccd 3	ccd 6	ccd 7
level 1 events	183241	176599	191229	192673	198053	240718	grade 0 events	19778	12241	11225	14505	8734	8833
rejected events	149172	149943	167177	164828	175886	141370		10%	6%	5%	7%	4%	3%
rejected %	81%	84%	87%	85%	88%	58%	grade 1 events	131	98	94	94	85	214
								0%	0%	0%	0%	0%	0%
							grade 2 events	5693	5086	5027	4932	4782	19647
								3%	2%	2%	2%	2%	8%
							grade 3 events	2389	2397	2069	2225	2202	8836
								1%	1%	1%	1%	1%	3%
							grade 4 events	2280	2400	1994	2126	2111	8996
								1%	1%	1%	1%	1%	3%
							grade 5 events	6947	7526	6486	7562	8214	23188
								3%	4%	3%	3%	4%	9%
							grade 6 events	3934	4542	3738	4066	4347	53063
								2%	2%	1%	2%	2%	22%
							grade 7 events	142089	142309	160596	157163	167578	117941
								77%	80%	83%	81%	84%	48%

2.2 Compared Parameters

Parameter	Planned	Actual	Parameter	Planned	Actual
Instrument	ACIS	ACIS	Obspar format version number	7	7
Detector	ACIS-012367	ACIS-012367	Obspar file type	PREDICTED	ACTUAL
Grating	NONE	NONE	Obspar update status	NONE	UPDATED
Data mode	FAINT	FAINT	Number of optional ACIS chips dropped	0	0
Observation mode	POINTING	POINTING	On-chip summing requested	N	N
[deg] Pointing RA	81.689793	81.70032203154716	Subarray requested	NONE	NONE
[deg] Pointing Dec	42.977826	42.95150492583572	Alternating exposures requested	N	N
[deg] Pointing Roll	255.987326	256.1888468857006	[s] Primary exposure time	0.000000	3.2
[mm] SIM focus pos	-0.782348	-0.7809083437167272			
[mm] SIM defocus	0	0.001439871863259334			
[mm] SIM translation stage pos	-233.592463	-233.5874344608287			
[mm] SIM translation stage offset	0	-0.005018542100998502			
[s] Observation start time (MET)	128779152.184000	128778161.26435			
Observation start date	2002-01-30T11:58:08	2002-01-30T11:42:41			
[s] Observation end time (MET)	128809152.184000	128809750.22812			
Observation end date	2002-01-30T20:18:08	2002-01-30T20:29:10			
Read mode	TIMED	TIMED			

2.3 Aspect



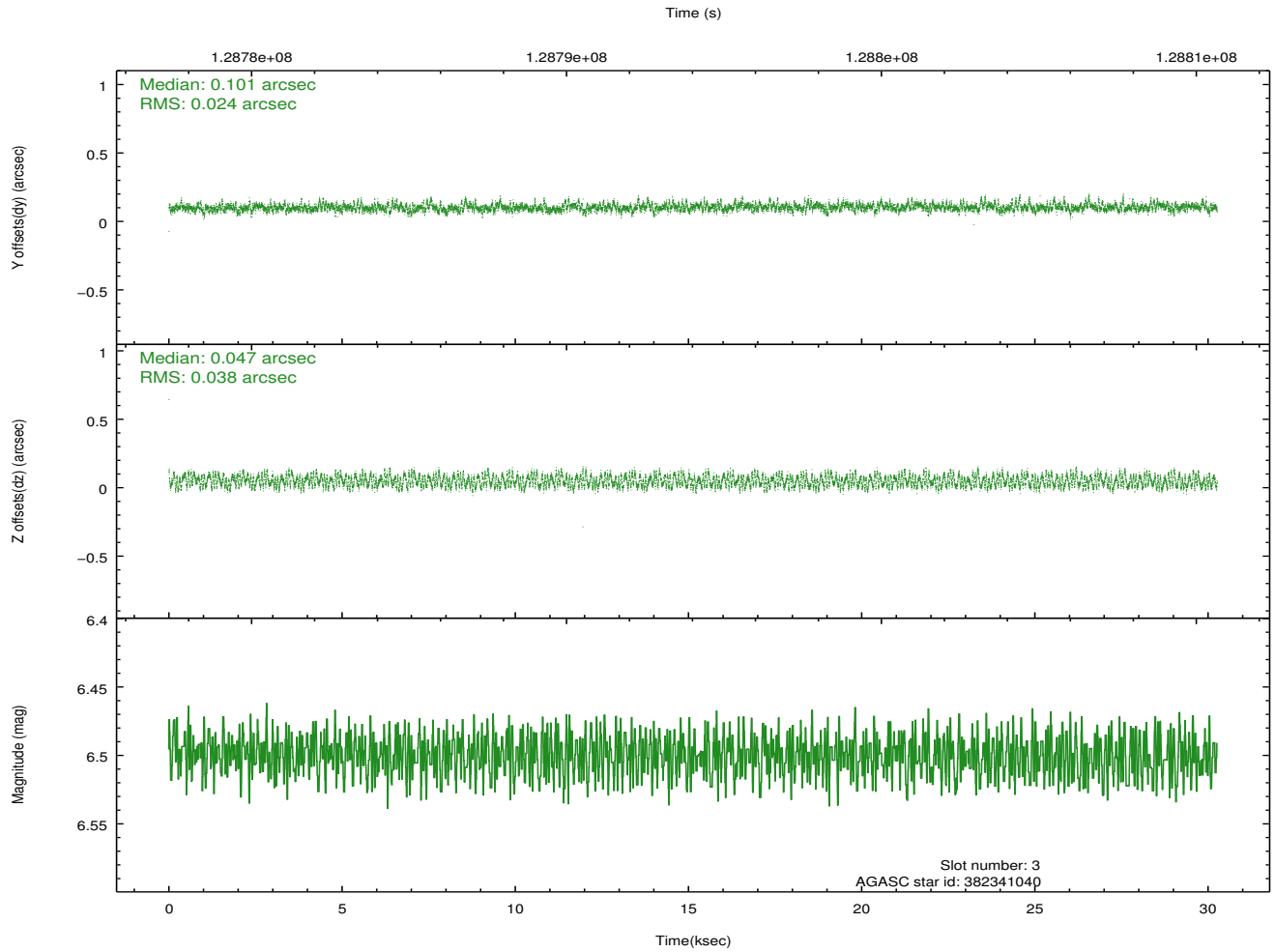
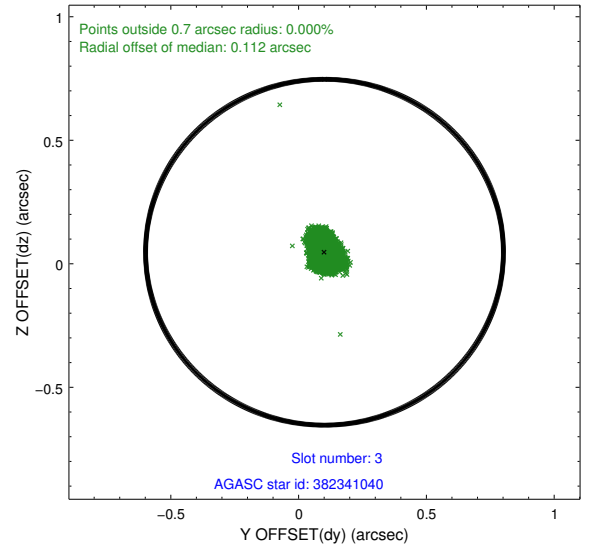
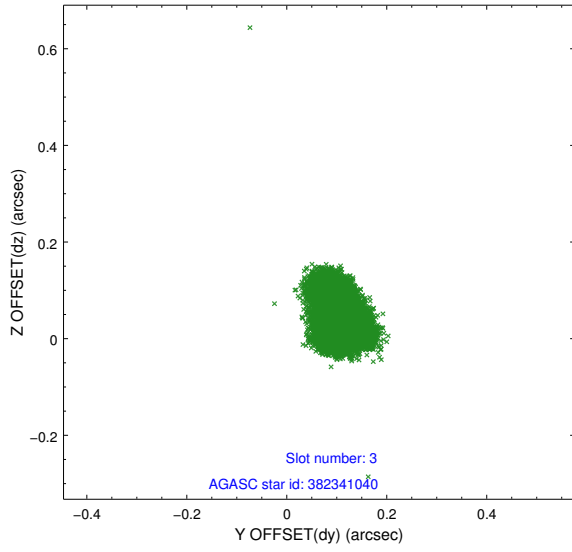


Slot Statistics

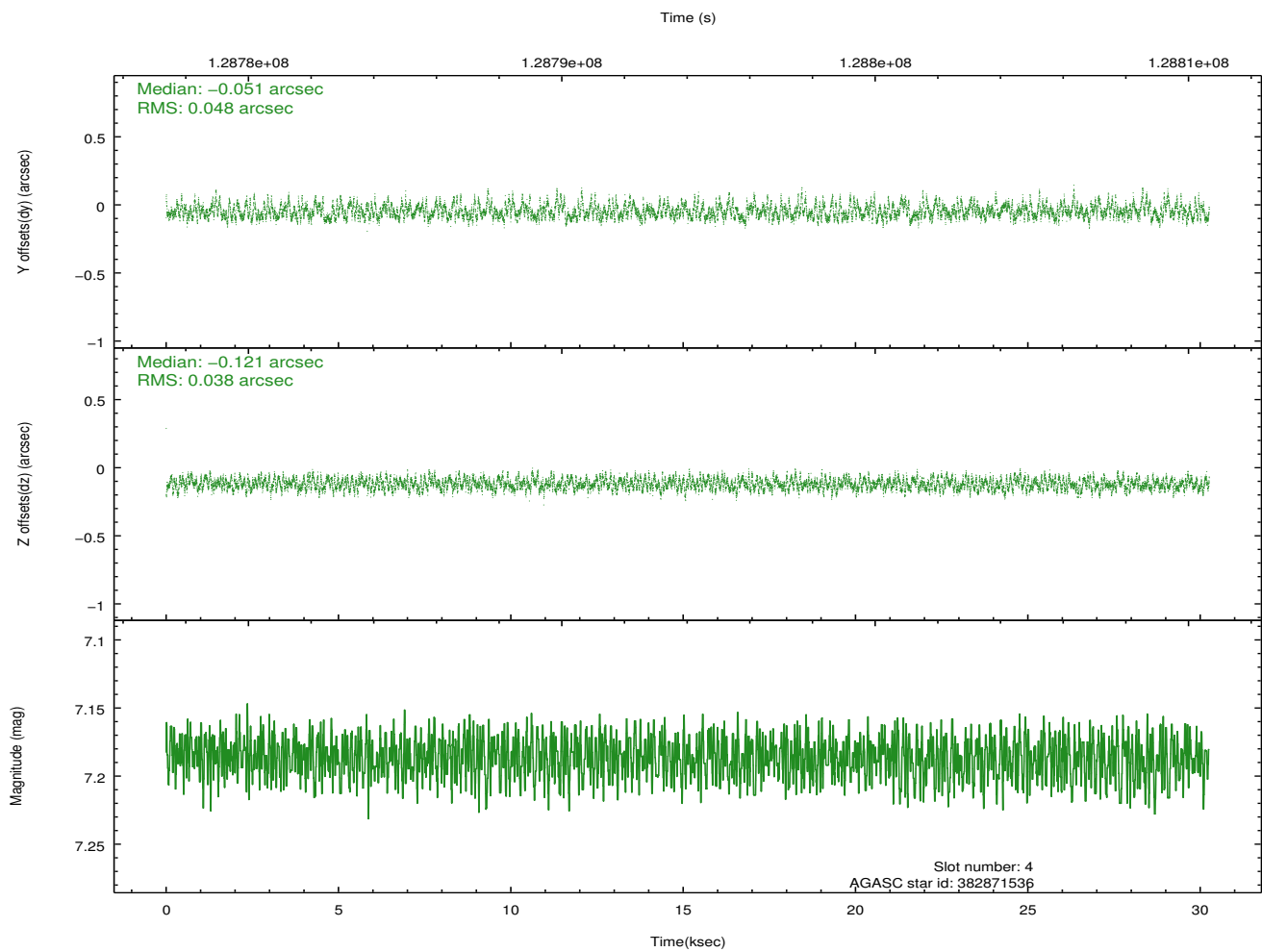
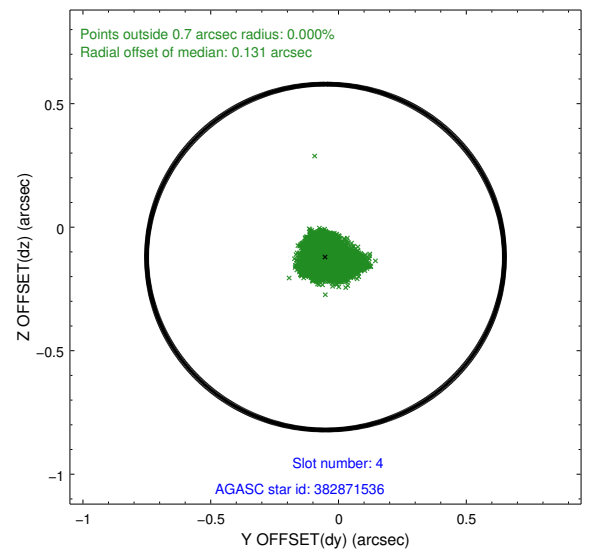
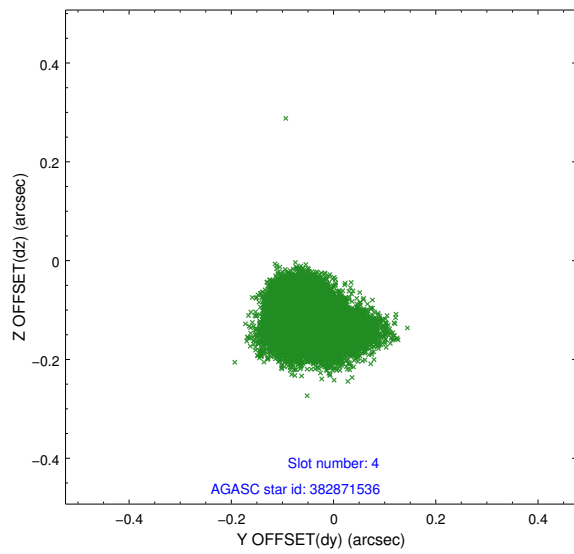
slot	status	id	mag	n_pts	med_dy	med_dz	dr1	dr2	ra	dec	mean_y	mean_z
0	FID	ACIS-I-1	7.25	7381	-0.010	0.016	0.008	0.014	0.000000	0.000000	937.43	-830.03
1	FID	ACIS-I-5	7.24	7382	-0.037	0.045	0.007	0.012	0.000000	0.000000	-1810.63	1067.51
2	FID	ACIS-I-6	7.26	7382	-0.045	0.010	0.009	0.017	0.000000	0.000000	402.91	1712.01
3	GUIDE	382341040	6.50	14763	0.101	0.047	0.048	0.076	82.254608	42.270514	2102.04	2075.57
4	GUIDE	382871536	7.19	14763	-0.051	-0.121	0.066	0.104	81.913315	43.367921	-1504.12	227.06
5	GUIDE	382996080	7.70	14762	-0.034	0.061	0.045	0.077	82.580043	43.373171	-1956.64	1912.48
6	GUIDE	382342104	8.24	14761	-0.016	0.027	0.069	0.108	80.750724	42.948597	688.75	-2378.57
7	GUIDE	382871248	8.97	14760	0.002	-0.016	0.084	0.132	80.811363	43.235410	-352.45	-2463.08

2.4 Star Slots

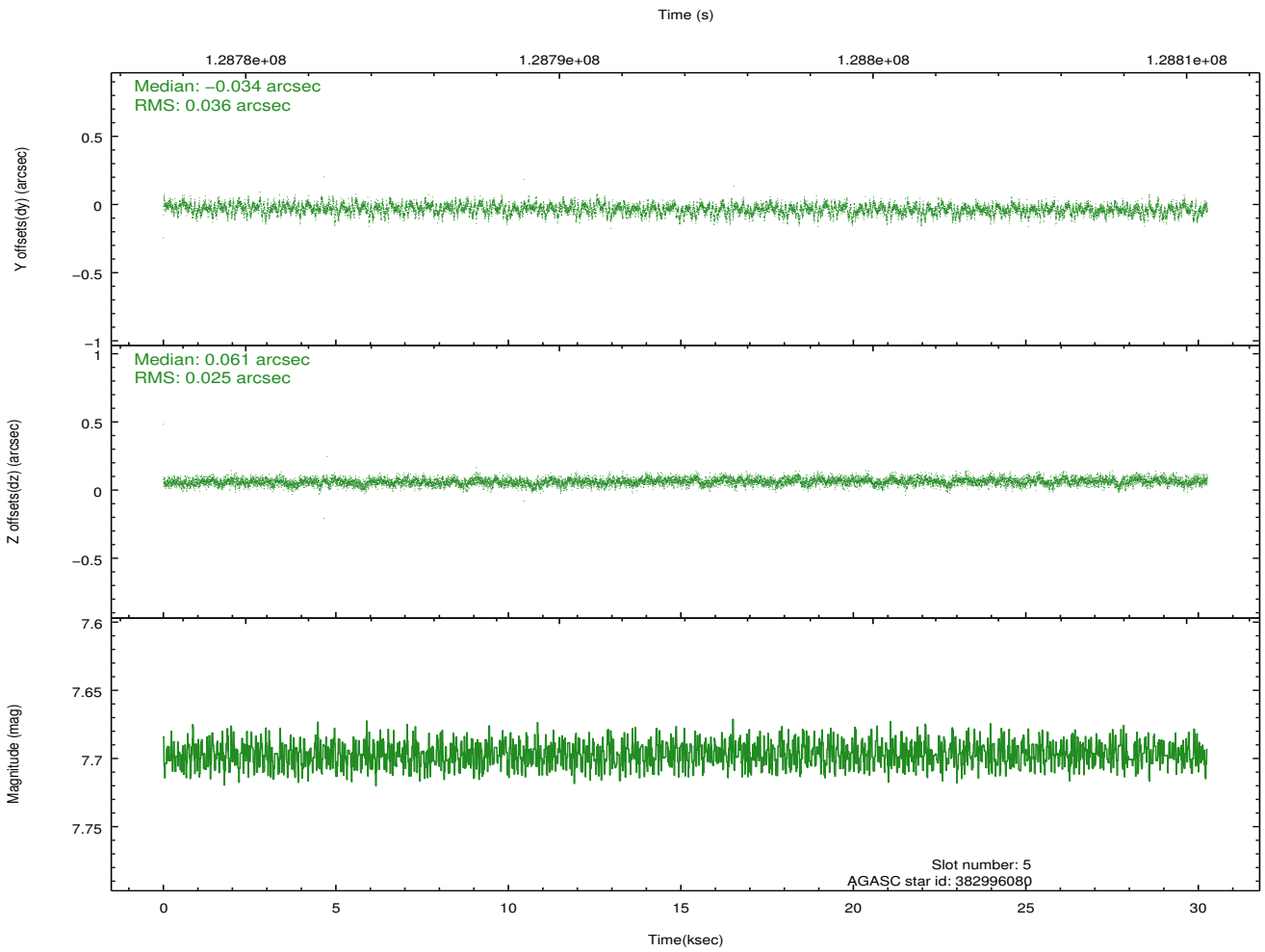
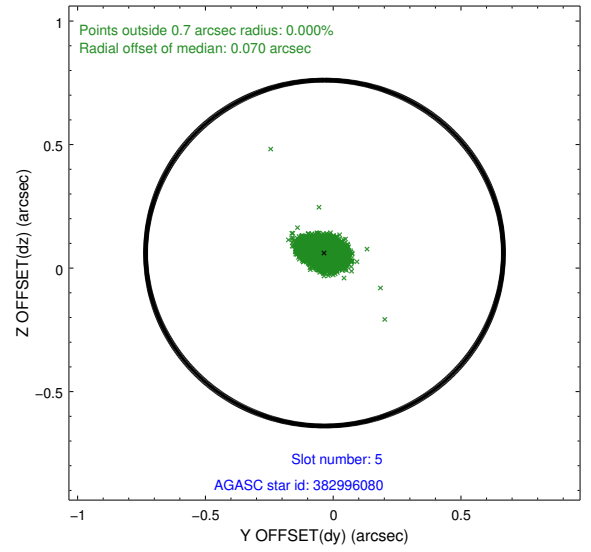
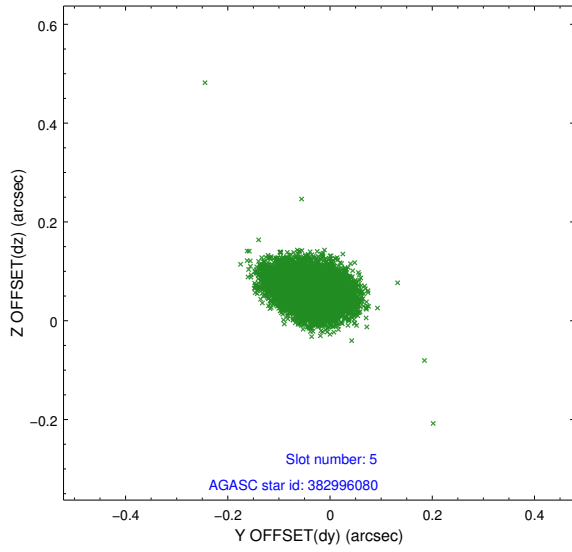
2.4.1 Slot 3



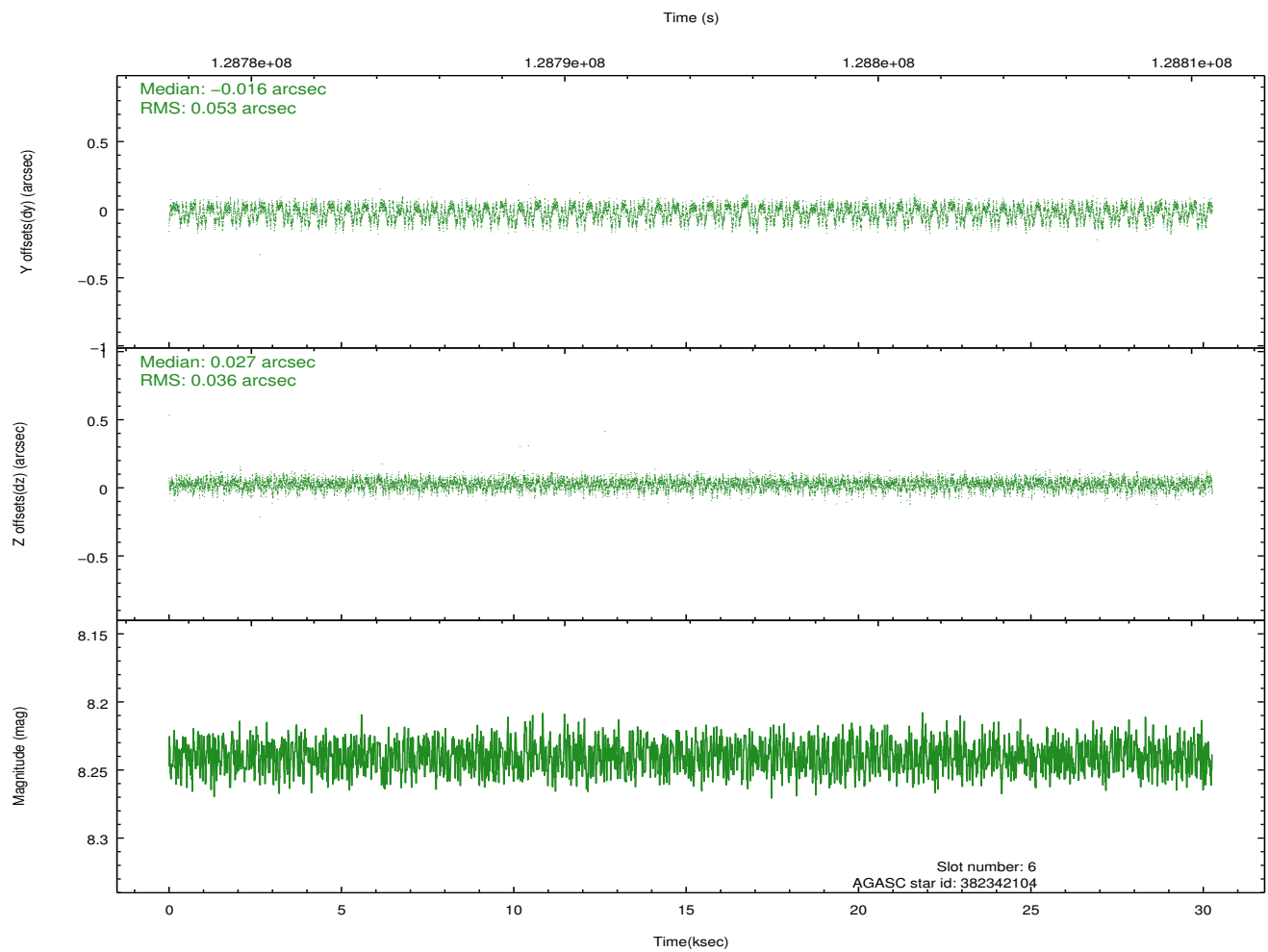
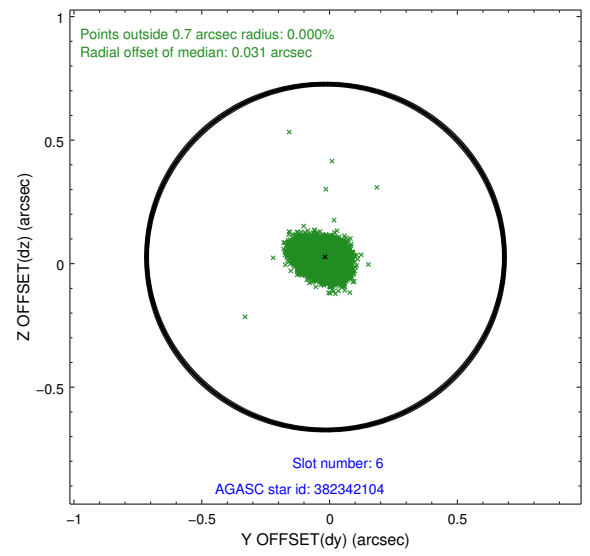
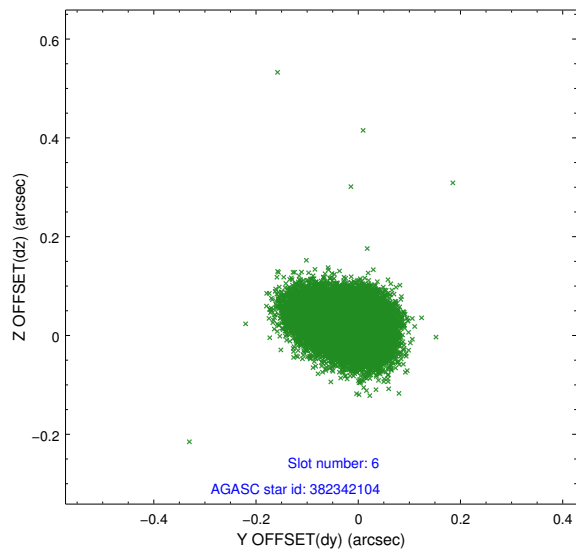
2.4.2 Slot 4



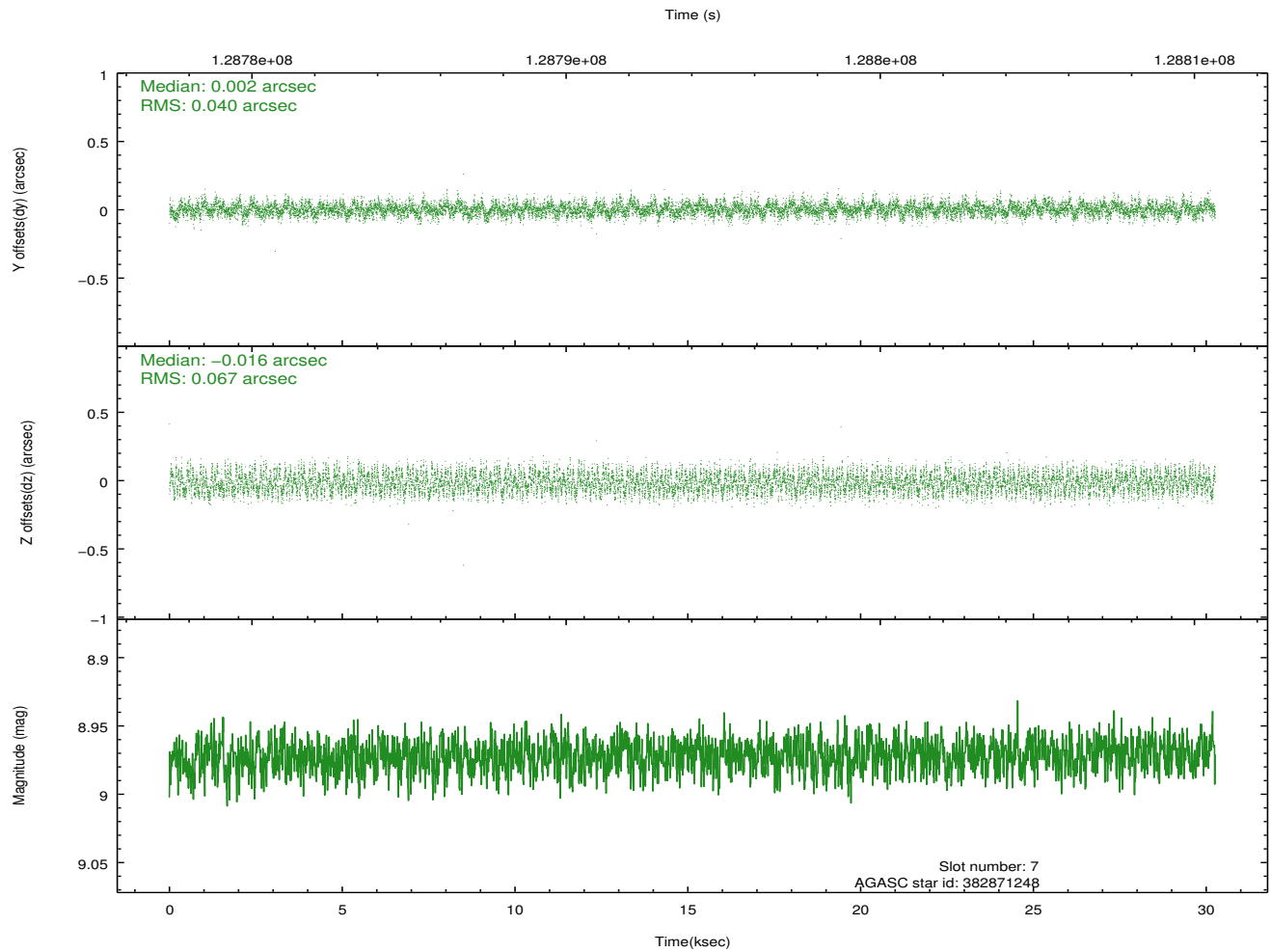
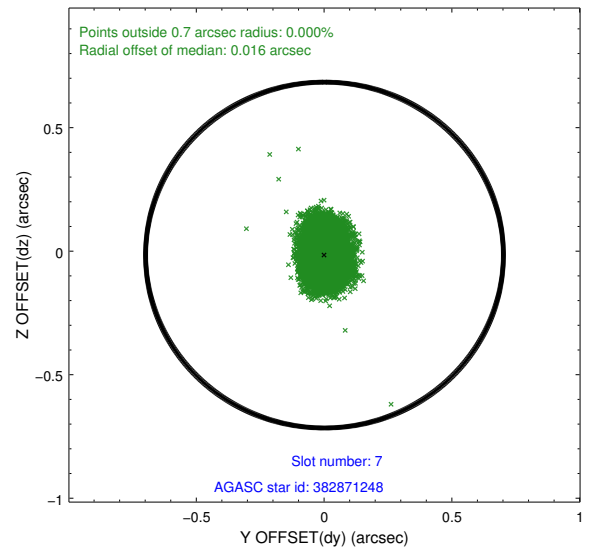
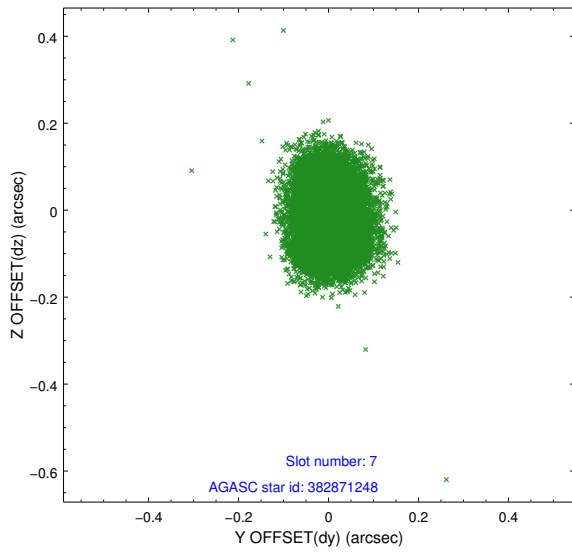
2.4.3 Slot 5



2.4.4 Slot 6

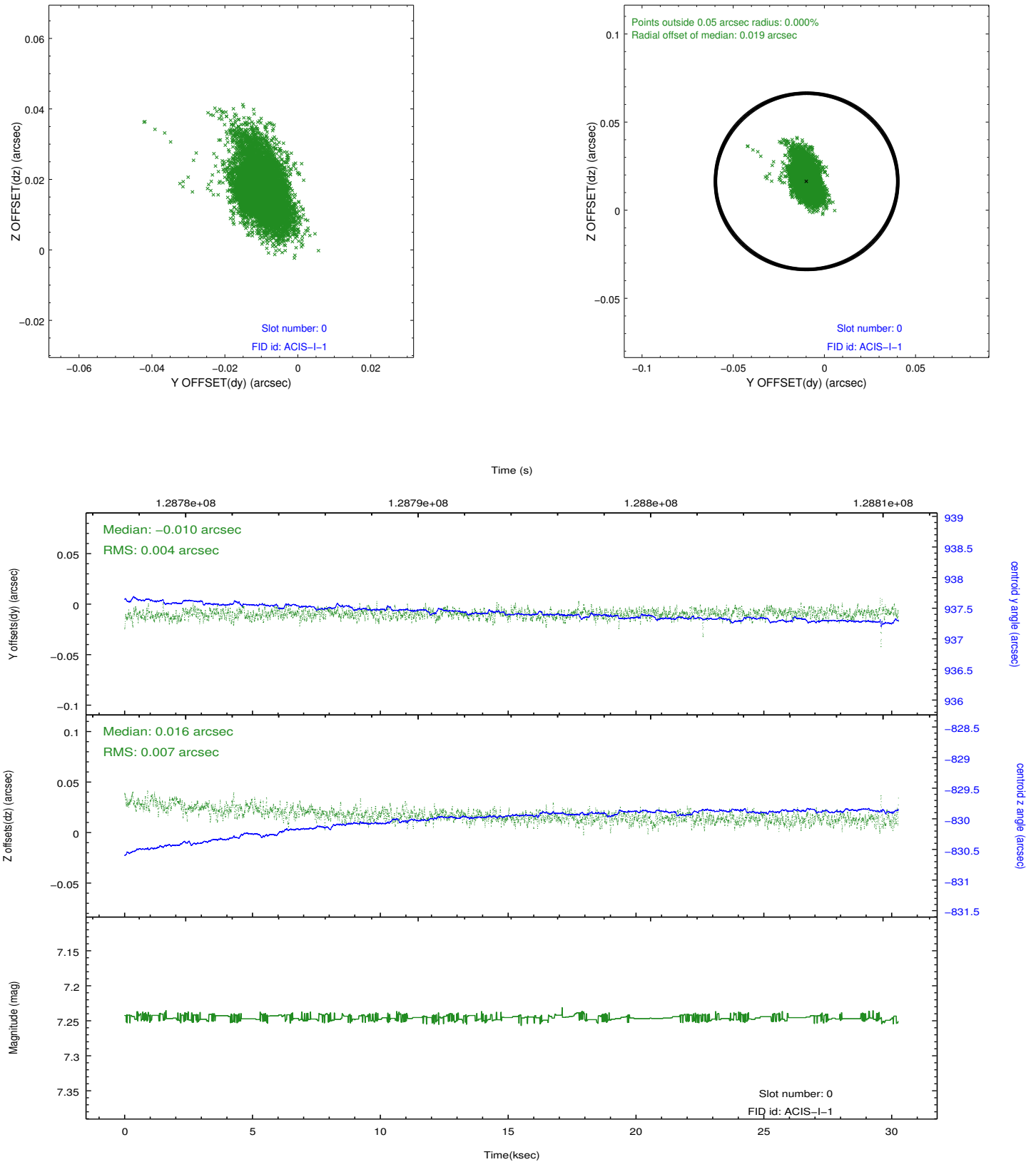


2.4.5 Slot 7

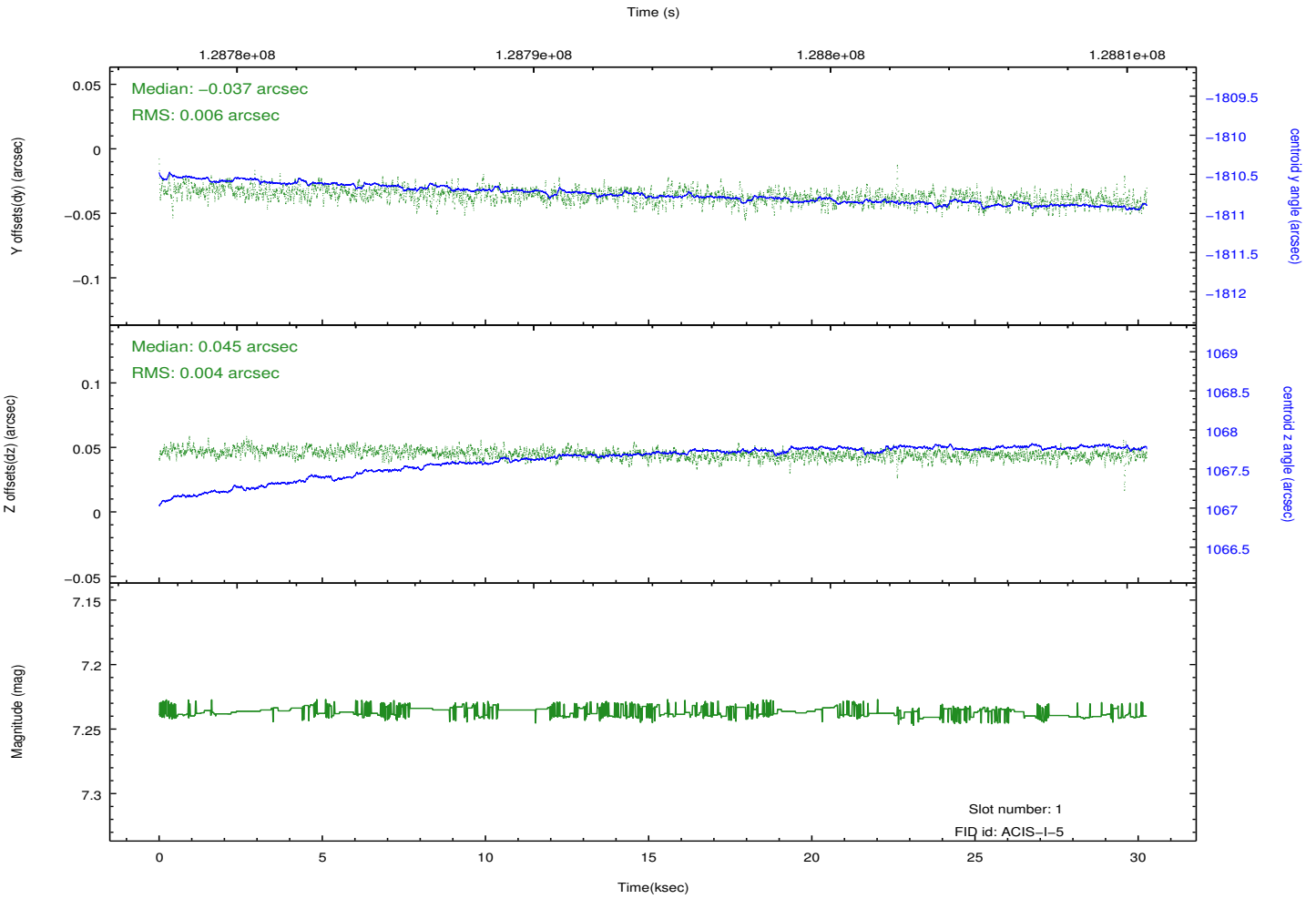
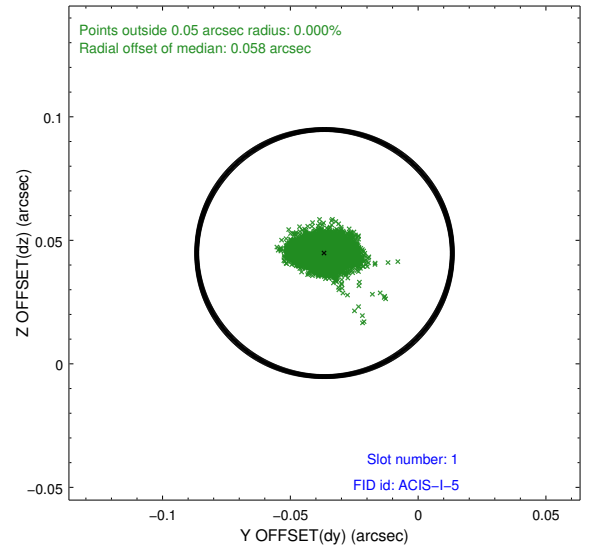
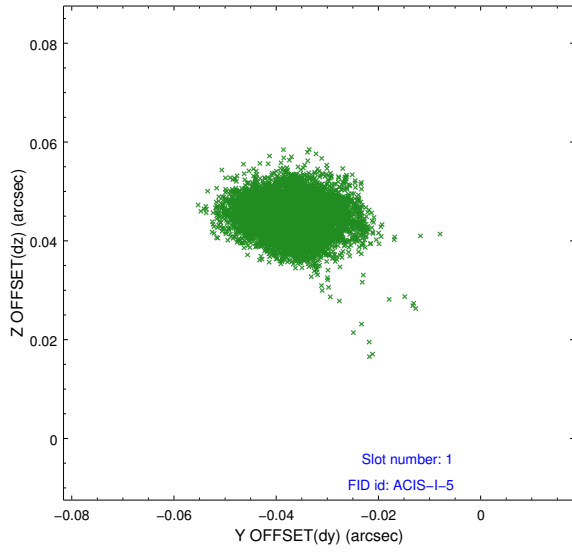


2.5 FID Slots

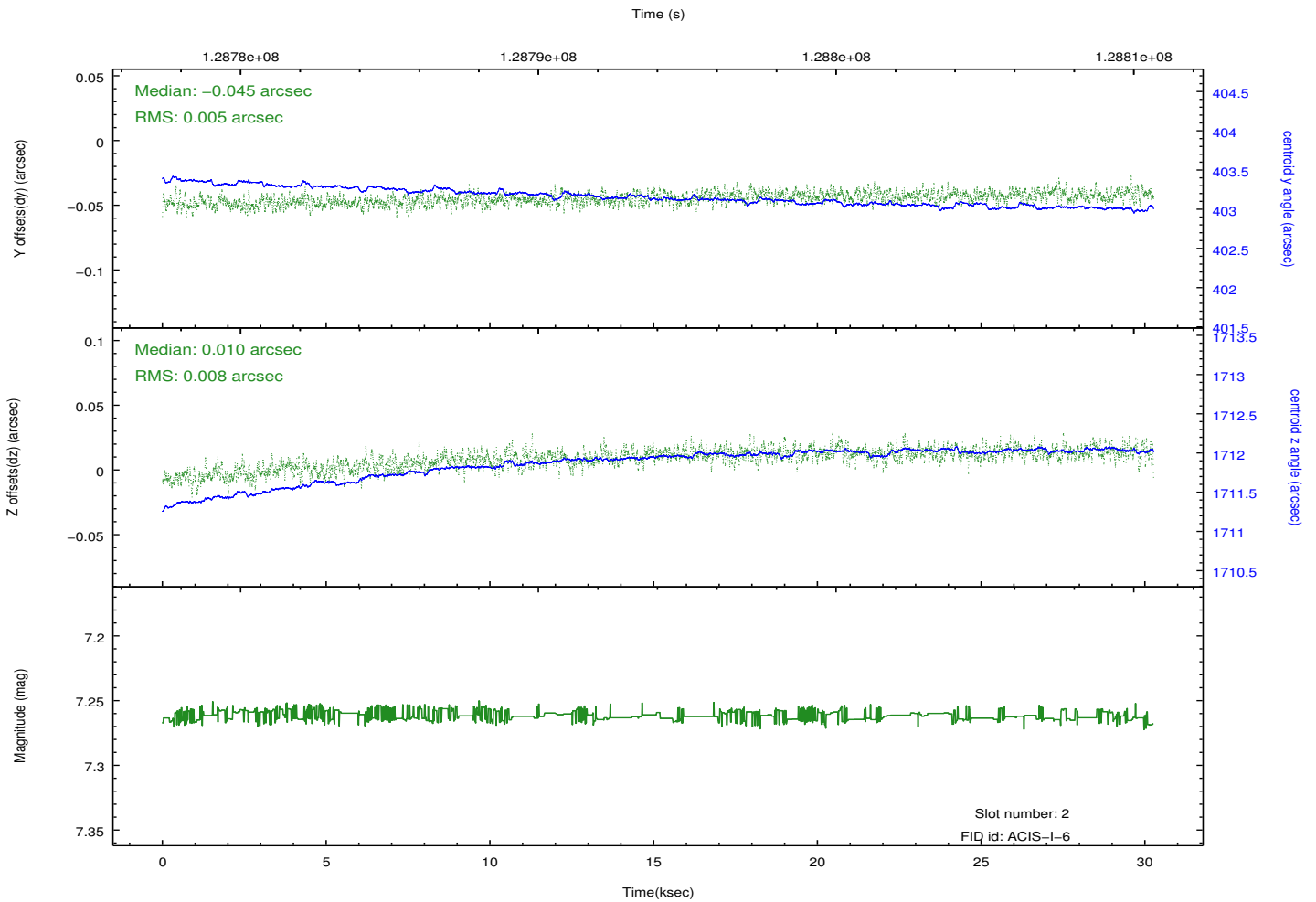
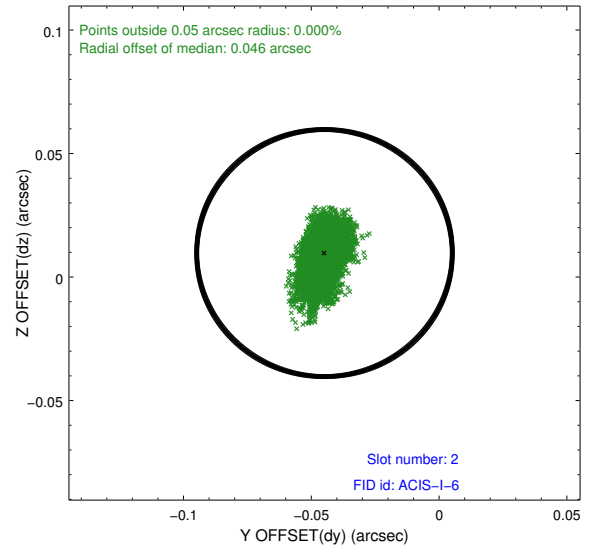
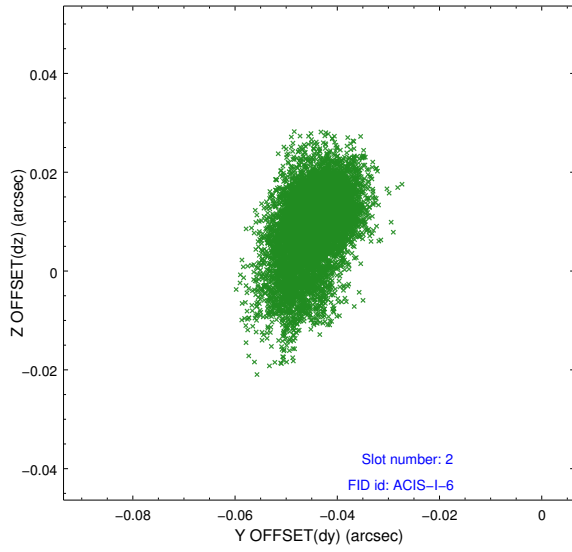
2.5.1 Slot 0



2.5.2 Slot 1



2.5.3 Slot 2



A Summary

A.1 Status

V&V Scientist	Jen Lauer
V&V Date (YYYY-MM-DD)	2012.10.03
V&V Edition	1
V&V Disposition and Status	OK
V&V Charge Time	29.964

A.2 Comments