

V&V Reference Report

L2 ASCDS Version : 8.4.5

Observation 2863 - L2 Version 3
Chandra X-Ray Center

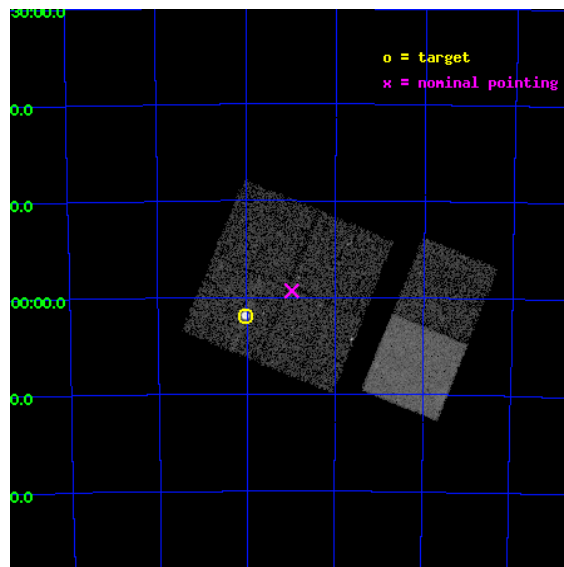
L2 Processing Date : Oct 9 2012

Contents

1	Front	2
2	OBI	3
2.1	OBI	3
2.1.1	Images	3
2.1.2	Bias	3
2.1.3	Parameters	4
2.1.4	Events	4
2.2	Compared Parameters	5
2.3	Aspect	6
2.4	Star Slots	9
2.4.1	Slot 3	9
2.4.2	Slot 4	10
2.4.3	Slot 5	11
2.4.4	Slot 6	12
2.4.5	Slot 7	13
2.5	FID Slots	14
2.5.1	Slot 0	14
2.5.2	Slot 1	15
2.5.3	Slot 2	16
A	Summary	17
A.1	Status	17
A.2	Comments	17

1 Front

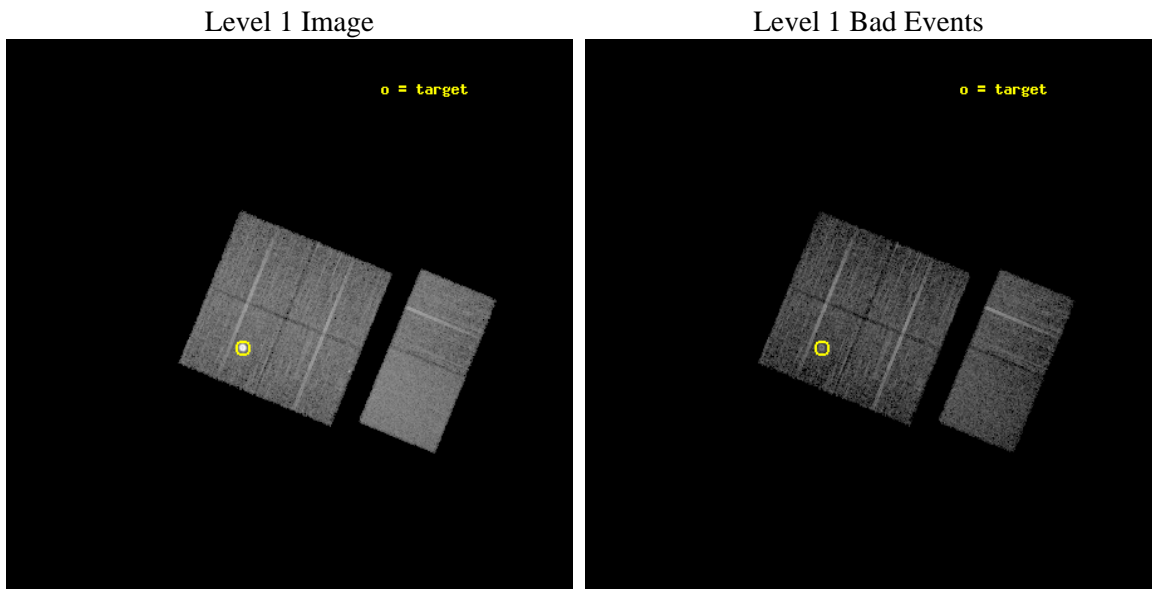
seq_num	590252	Sequence number
obs_id	2863	Observation id
title	AO3B ACIS-I CALIBRATION OBSERVATIONS OF E0102-72	Proposal title
observer	Dr. CXC Calibration	Principal investigator
object	E0102-72.3 [Chip I1, T=120, Offsets=-4,-3,0]	Source name
dtcycle	0	
cycle	P	events from which exps? Prim/Second/Both
ra_targ	16.01	Observer's specified target RA [deg]
dec_targ	-72.032028	Observer's specified target Dec [deg]
ra_nom	15.744869206634	Nominal RA [deg]
dec_nom	-71.988760401505	Nominal Dec [deg]
roll_nom	112.27580531189	Nominal Roll [deg]
revision	3	Processing version of data
ontime	7657.5999714732	Sum of GTIs [s]
livetime	7560.6348297813	Livetime [s]
ontime0	7654.3589813411	Sum of GTIs [s]
ontime1	7657.5999714732	Sum of GTIs [s]
ontime2	7654.3590112329	Sum of GTIs [s]
ontime3	7657.5999714732	Sum of GTIs [s]
ontime6	7657.5999714732	Sum of GTIs [s]
ontime7	7657.5999714732	Sum of GTIs [s]
l2events	76879	Number of level 2 events



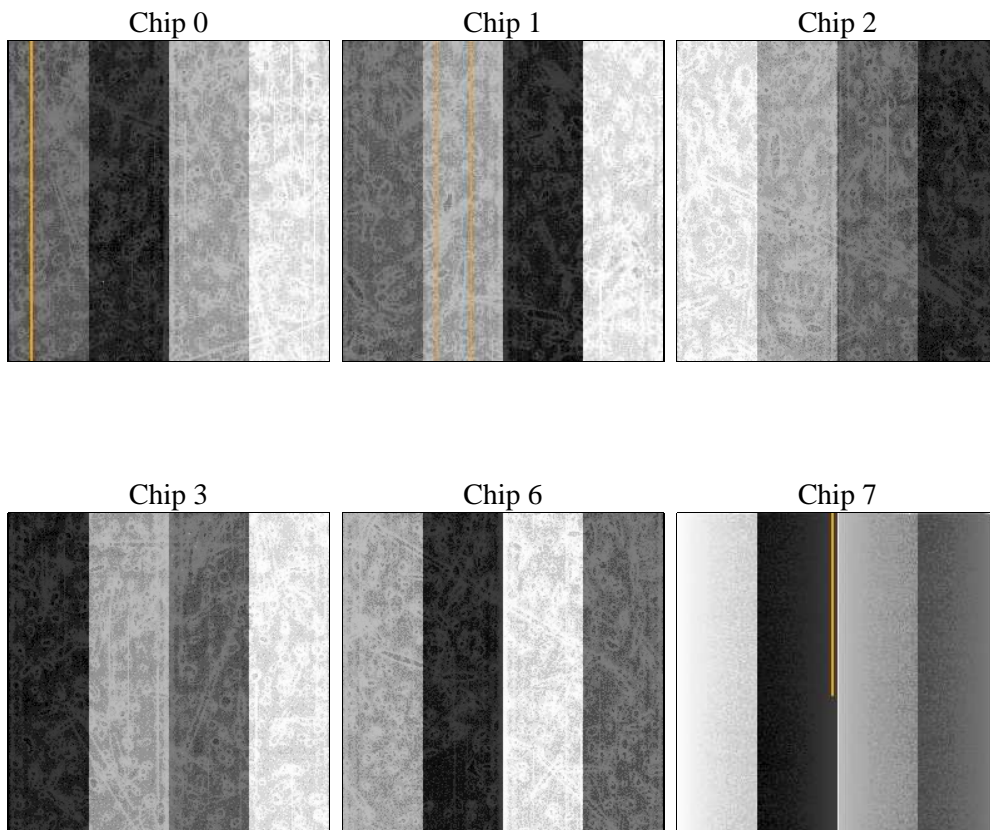
2 OBI

2.1 OBI

2.1.1 Images



2.1.2 Bias



2.1.3 Parameters

obi_num	0	Obi number	sched_exp_time	7900.000000	[s] Scheduled observation exposure time
ascdsver	8.4.5	Processing system revision	ontime	7657.5999714732	Sum of GTIs [s]
caldbver	4.5.2	 	ontime0	7654.3589813411	Sum of GTIs [s]
date	2012-10-10T00:57:09	Date and time of file creation	ontime1	7657.5999714732	Sum of GTIs [s]
revision	3	Processing version of data	ontime2	7654.3590112329	Sum of GTIs [s]
			ontime3	7657.5999714732	Sum of GTIs [s]
			ontime6	7657.5999714732	Sum of GTIs [s]
			ontime7	7657.5999714732	Sum of GTIs [s]
			l1events	334218	Number of level 1 events

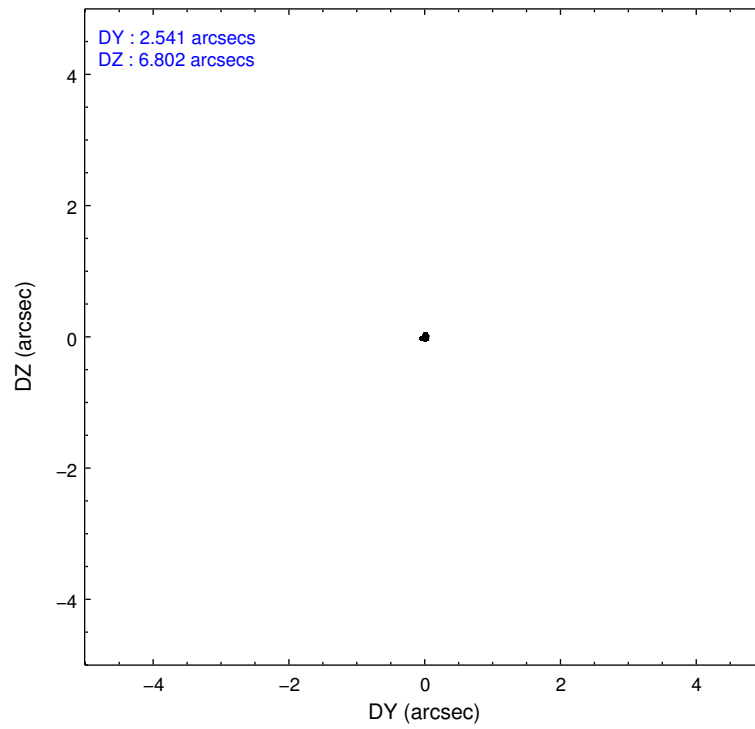
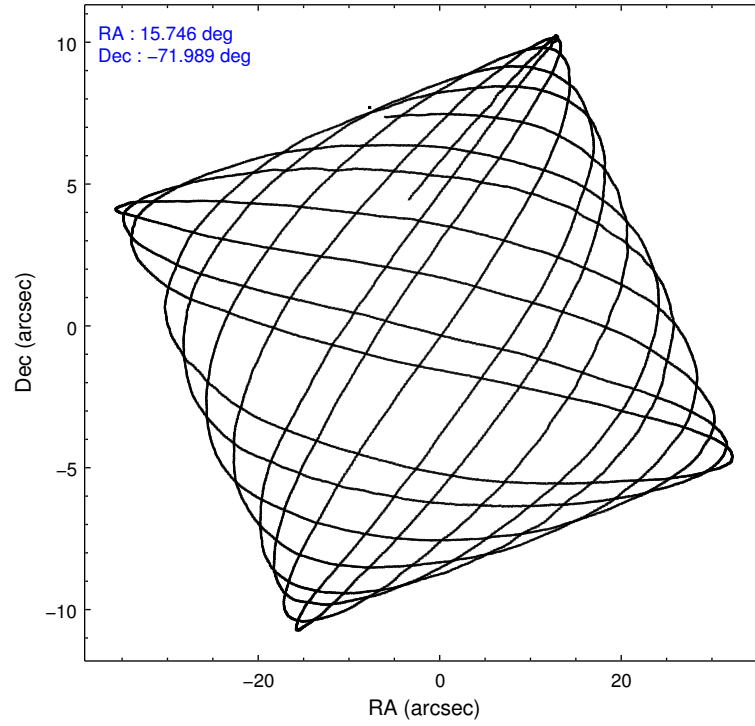
2.1.4 Events

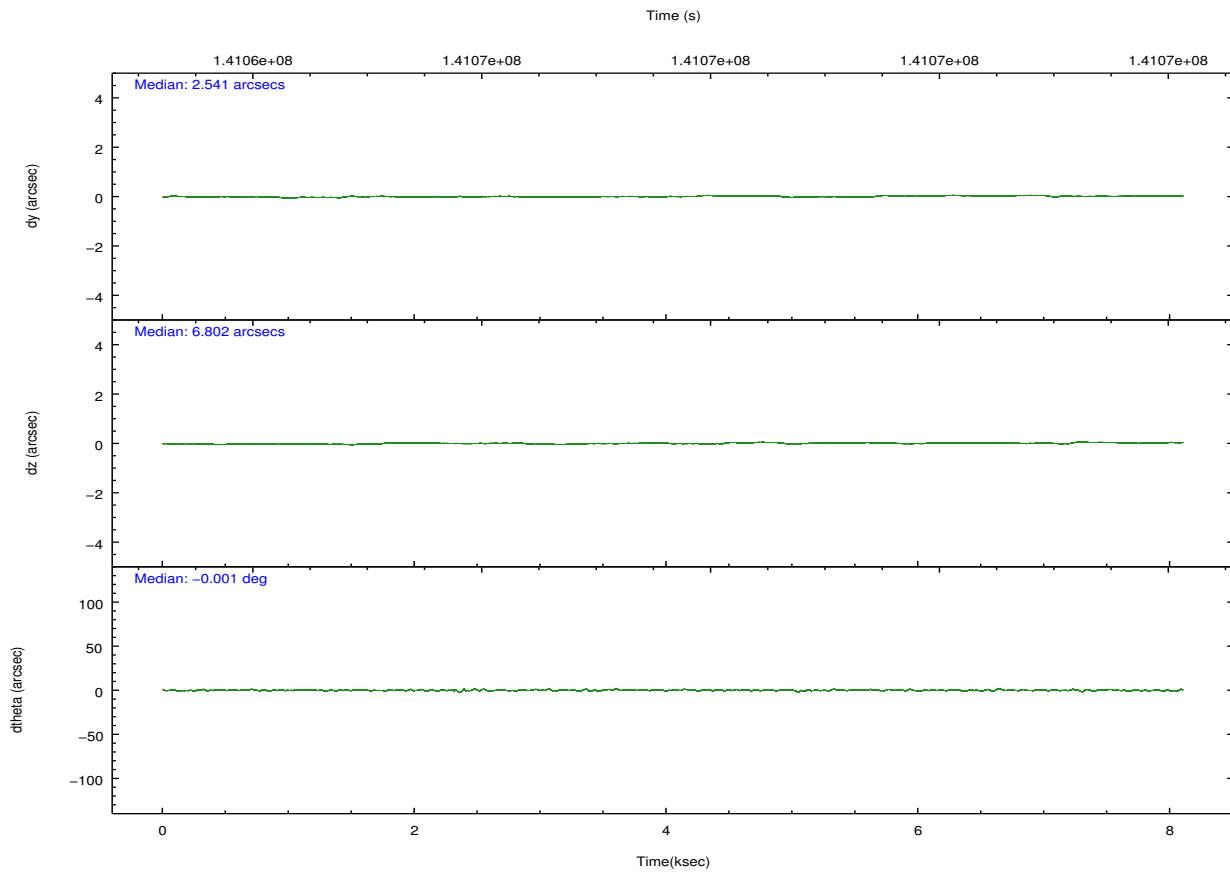
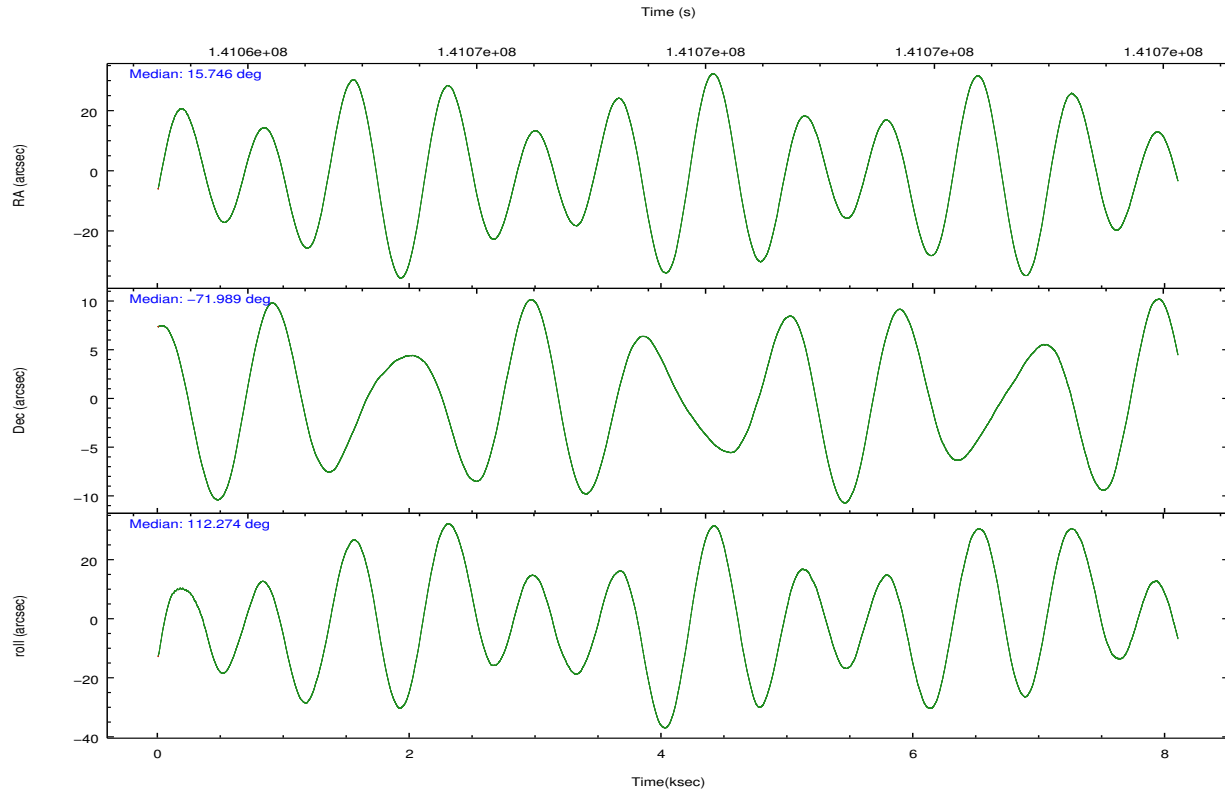
	ccd 0	ccd 1	ccd 2	ccd 3	ccd 6	ccd 7		ccd 0	ccd 1	ccd 2	ccd 3	ccd 6	ccd 7
level 1 events	45642	71424	49321	48729	52859	66243	grade 0 events	2506	24885	2801	2852	2497	2740
rejected events	39767	40208	43226	42505	46786	38763		5%	34%	5%	5%	4%	4%
rejected %	87%	56%	87%	87%	88%	58%	grade 1 events	24	231	26	20	23	62
								0%	0%	0%	0%	0%	0%
							grade 2 events	1267	3035	1254	1171	1212	5504
								2%	4%	2%	2%	2%	8%
							grade 3 events	575	1049	504	585	610	2460
								1%	1%	1%	1%	1%	3%
							grade 4 events	536	971	532	584	584	2562
								1%	1%	1%	1%	1%	3%
							grade 5 events	1798	2066	1690	2001	2268	6395
								3%	2%	3%	4%	4%	9%
							grade 6 events	996	1289	1005	1034	1173	14224
								2%	1%	2%	2%	2%	21%
							grade 7 events	37940	37898	41509	40482	44492	32296
								83%	53%	84%	83%	84%	48%

2.2 Compared Parameters

Parameter	Planned	Actual	Parameter	Planned	Actual
Instrument	ACIS	ACIS	Obspar format version number	7	7
Detector	ACIS-012367	ACIS-012367	Obspar file type	PREDICTED	ACTUAL
Grating	NONE	NONE	Obspar update status	NONE	UPDATED
Data mode	FAINT	FAINT	Number of optional ACIS chips dropped	0	0
Observation mode	POINTING	POINTING	On-chip summing requested	N	N
[deg] Pointing RA	15.815056	15.74486920663445	Subarray requested	NONE	NONE
[deg] Pointing Dec	-72.005469	-71.98876040150523	Alternating exposures requested	N	N
[deg] Pointing Roll	112.133855	112.2758053118891	[s] Primary exposure time	0.000000	3.2
[s] Window start time (MET)	139276864.184000	139276864.184000			
[s] Window stop time (MET)	141782464.184000	141782464.184000			
[mm] SIM focus pos	-0.782348	-0.7809083437167272			
[mm] SIM defocus	0	0.001439871863259334			
[mm] SIM translation stage pos	-233.592463	-233.5874344608287			
[mm] SIM translation stage offset	0	-0.005018542100998502			
[s] Observation start time (MET)	141063823.184000	141063446.86346			
Observation start date	2002-06-21T16:22:39	2002-06-21T16:17:26			
[s] Observation end time (MET)	141071723.184000	141071856.98881			
Observation end date	2002-06-21T18:34:19	2002-06-21T18:37:36			
Read mode	TIMED	TIMED			

2.3 Aspect



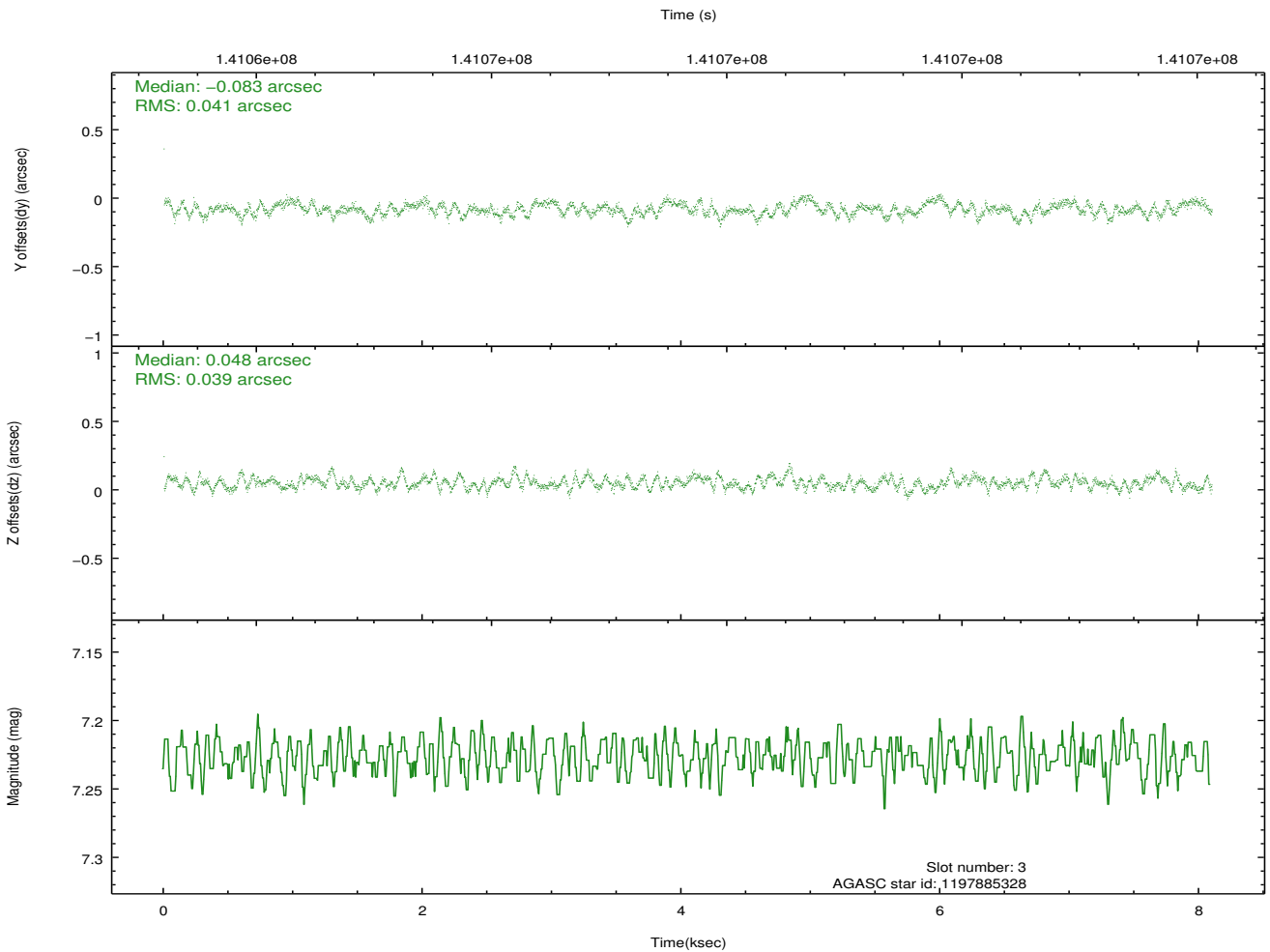
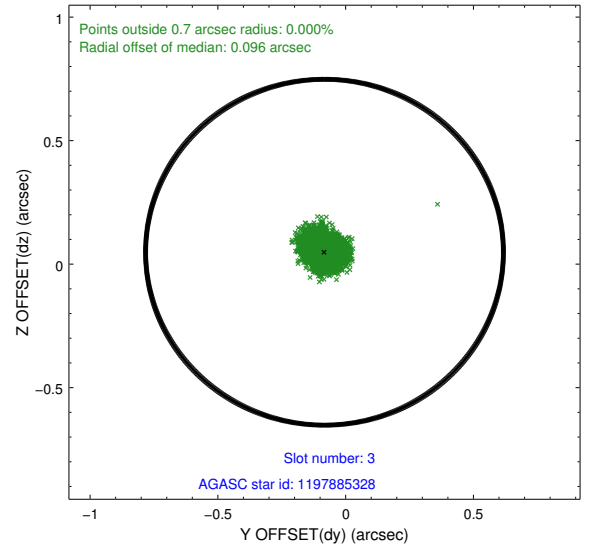
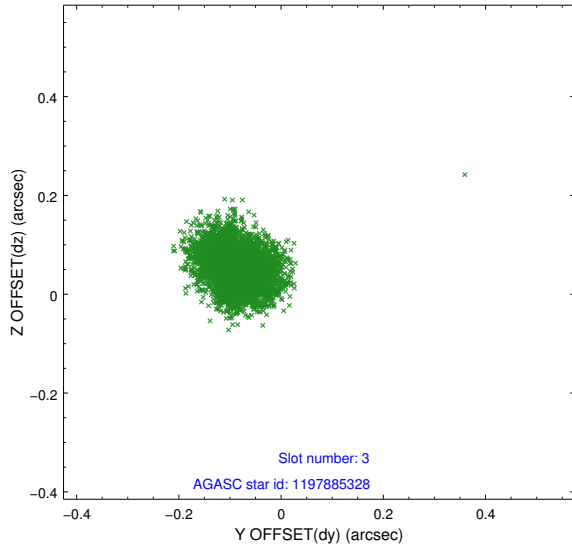


Slot Statistics

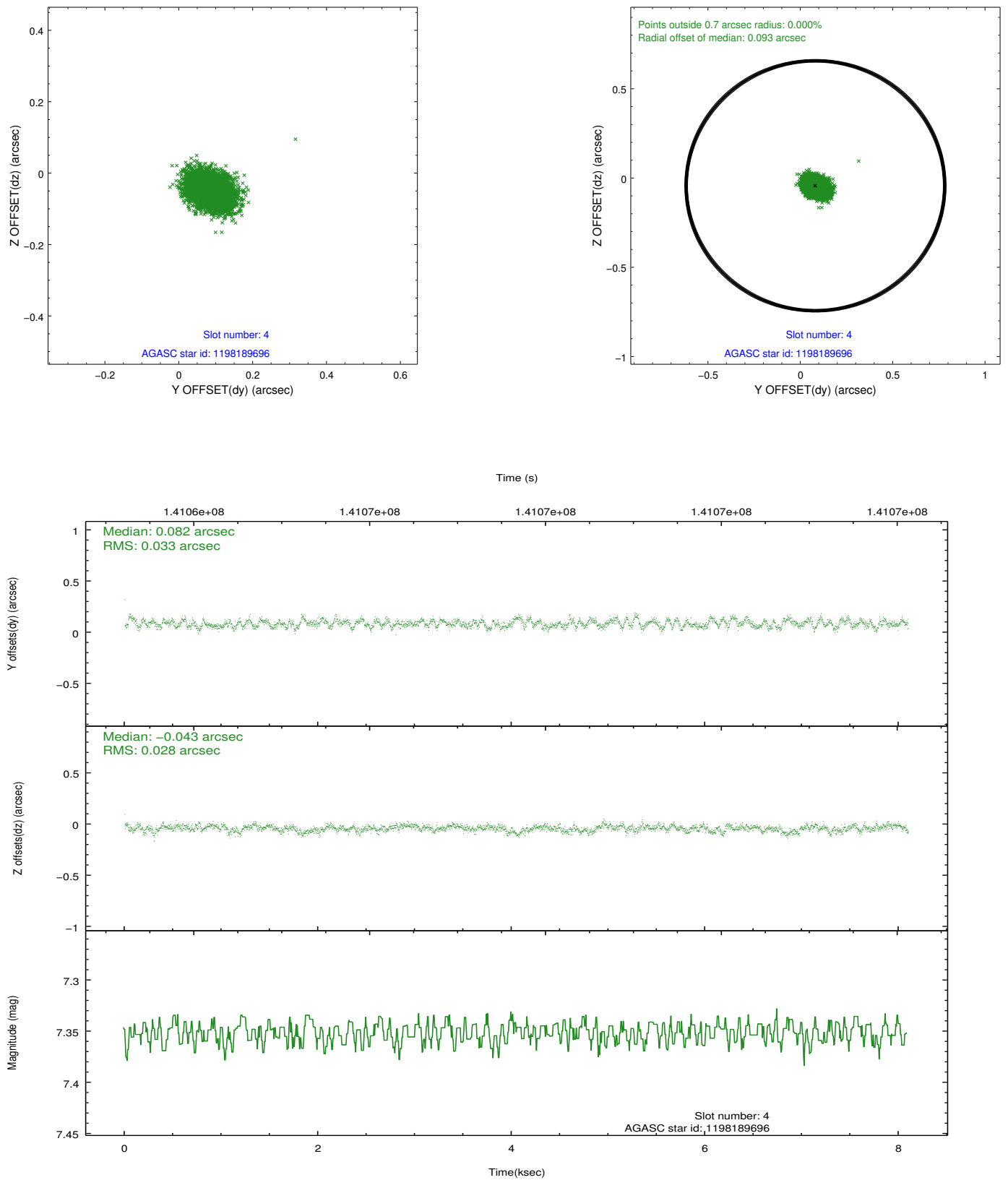
slot	status	id	mag	n_pts	med_dy	med_dz	dr1	dr2	ra	dec	mean_y	mean_z
0	FID	ACIS-I-1	7.24	1976	-0.036	-0.053	0.006	0.011	0.000000	0.000000	937.21	-830.26
1	FID	ACIS-I-3	7.45	1976	0.012	0.176	0.006	0.011	0.000000	0.000000	55.14	-963.66
2	FID	ACIS-I-6	7.26	1975	-0.065	-0.057	0.006	0.012	0.000000	0.000000	402.97	1711.15
3	GUIDE	1197885328	7.23	3952	-0.083	0.048	0.061	0.096	16.283090	-71.733943	705.13	-856.11
4	GUIDE	1198189696	7.35	3952	0.082	-0.043	0.046	0.075	15.223750	-72.697522	-2071.44	1526.79
5	GUIDE	1197750936	7.58	3952	-0.107	0.104	0.057	0.090	15.387940	-71.549550	1701.95	-165.61
6	GUIDE	1197749416	10.27	3887	0.010	-0.062	0.137	0.220	13.610513	-71.871242	1336.87	2122.35
7	GUIDE	1197749664	9.57	3949	0.092	-0.050	0.082	0.137	15.809015	-72.366369	-1200.03	496.82

2.4 Star Slots

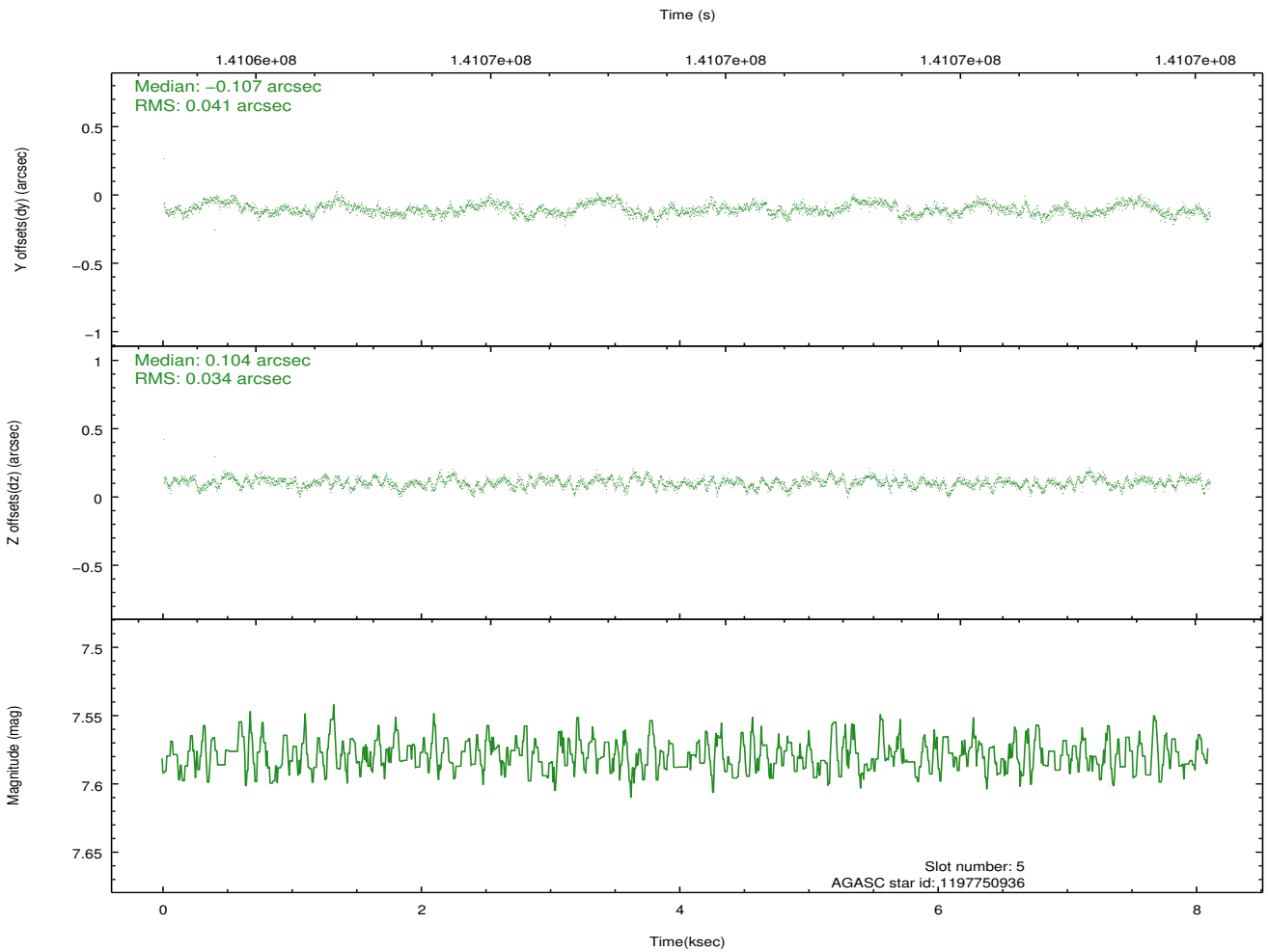
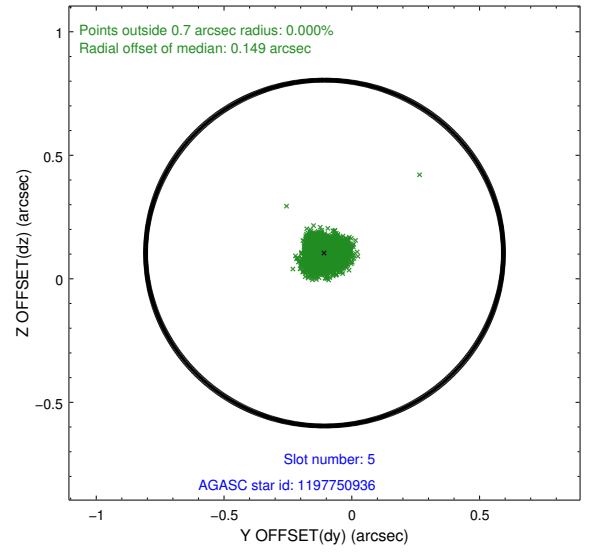
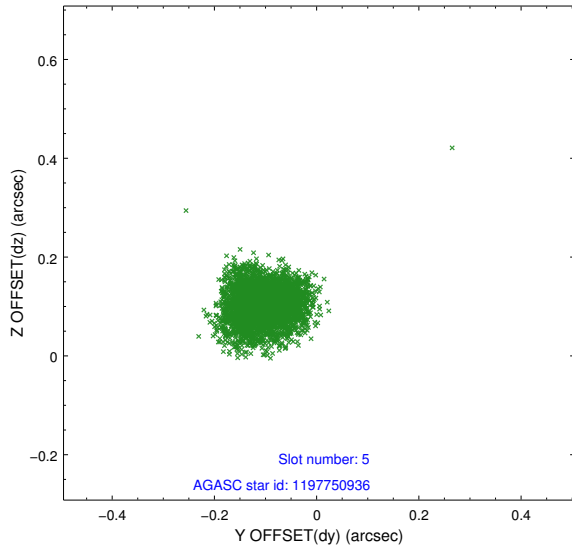
2.4.1 Slot 3



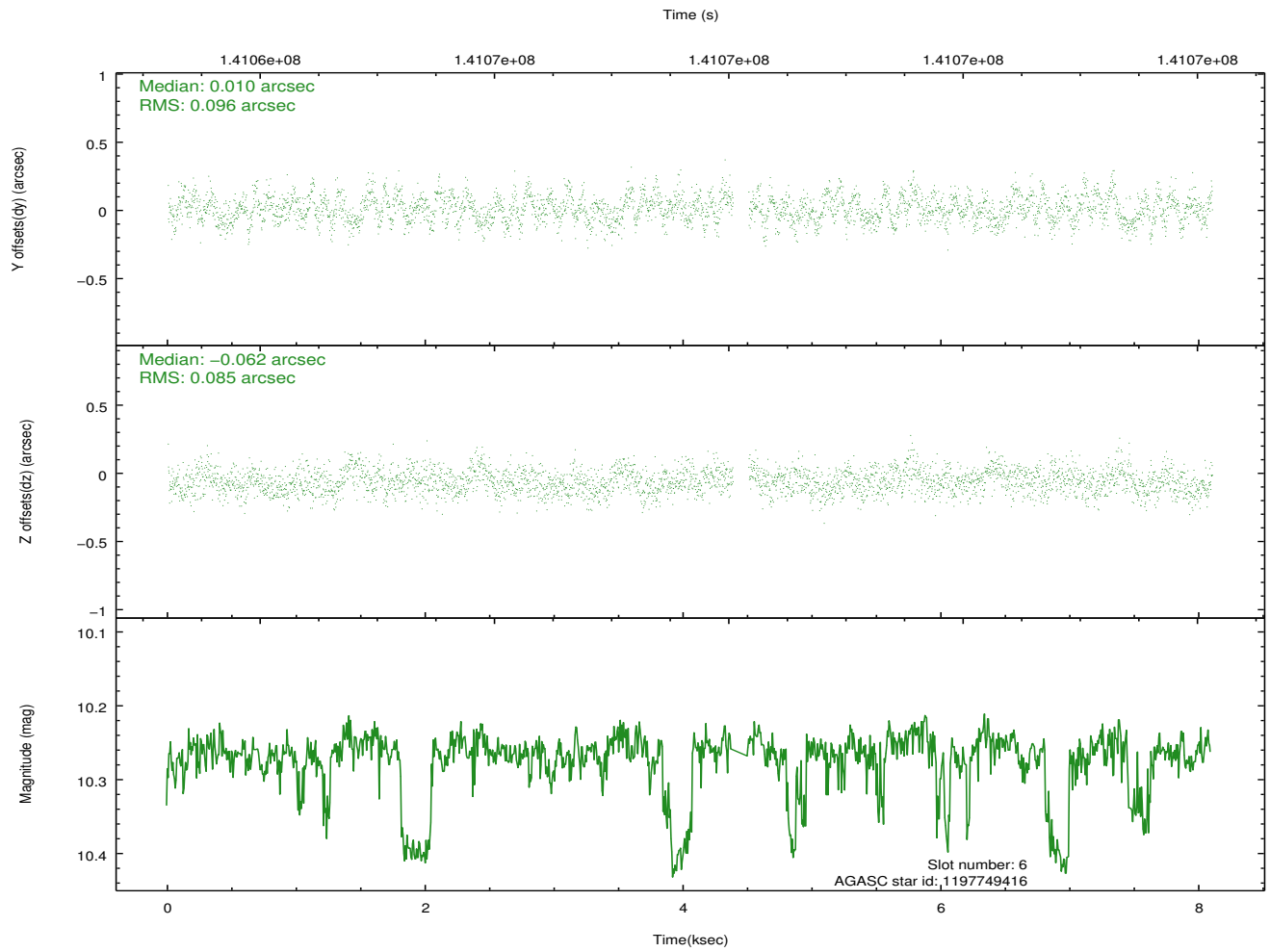
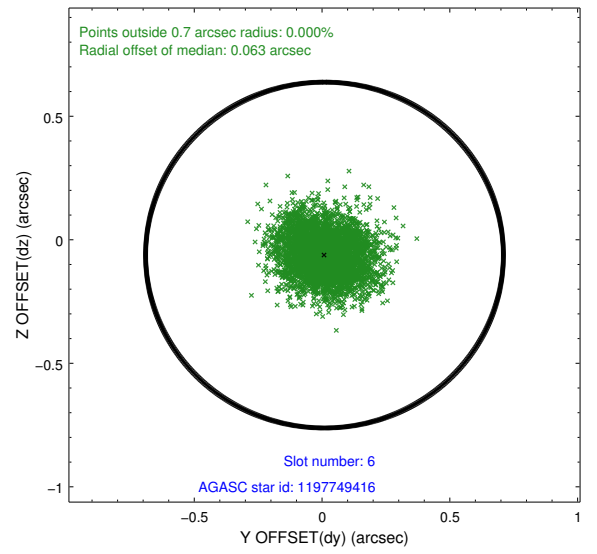
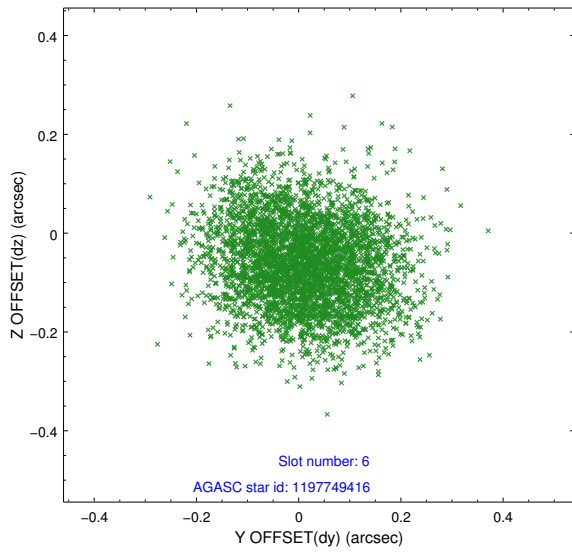
2.4.2 Slot 4



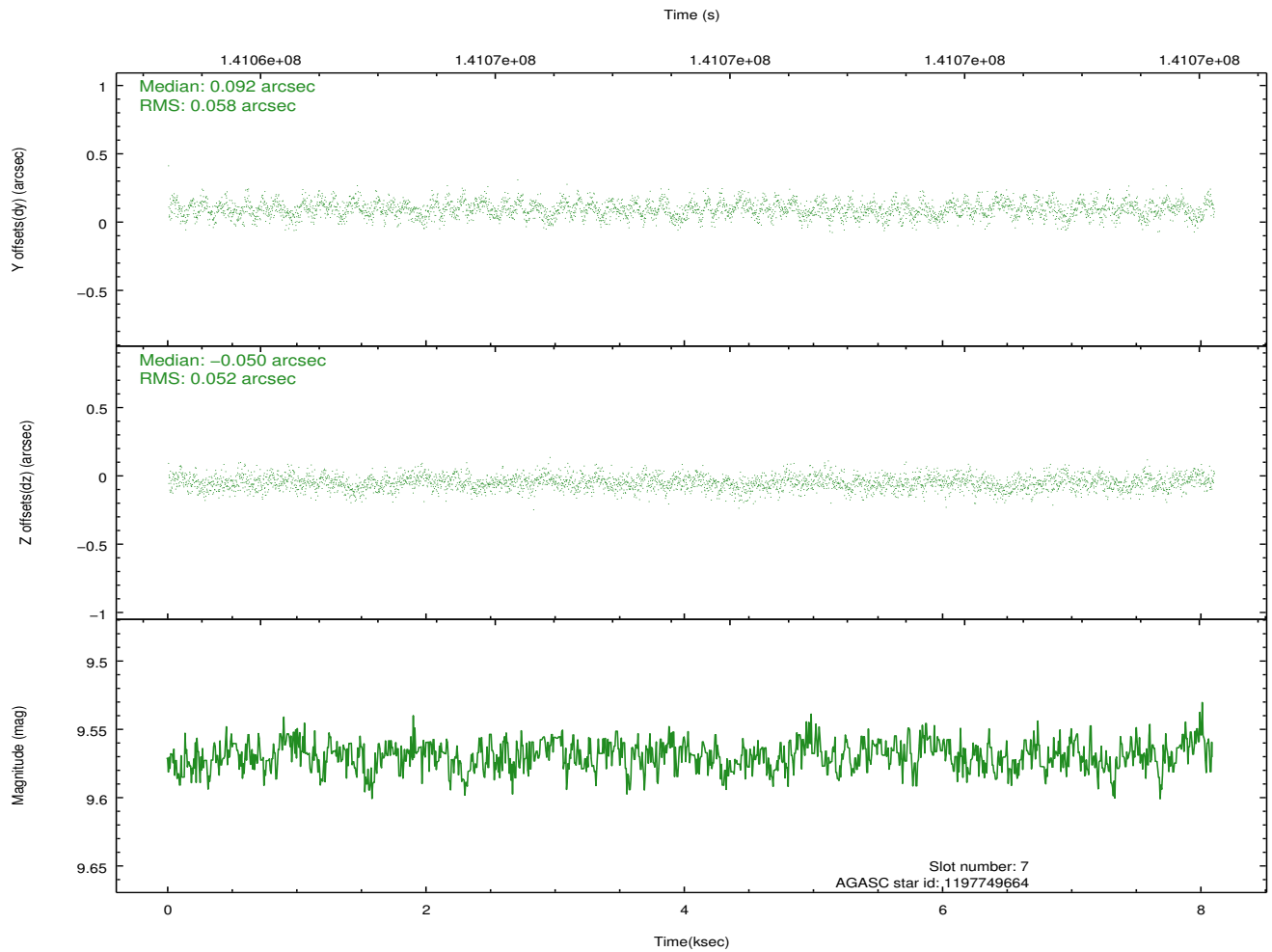
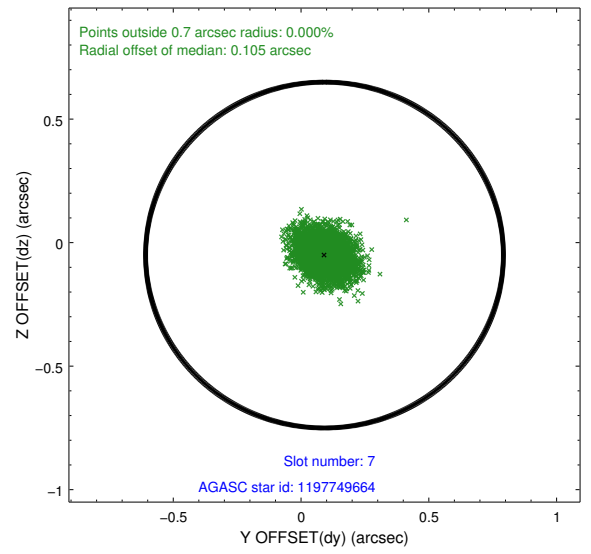
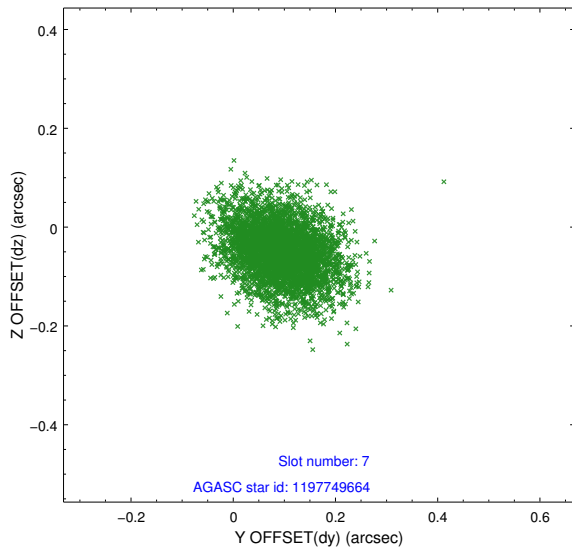
2.4.3 Slot 5



2.4.4 Slot 6

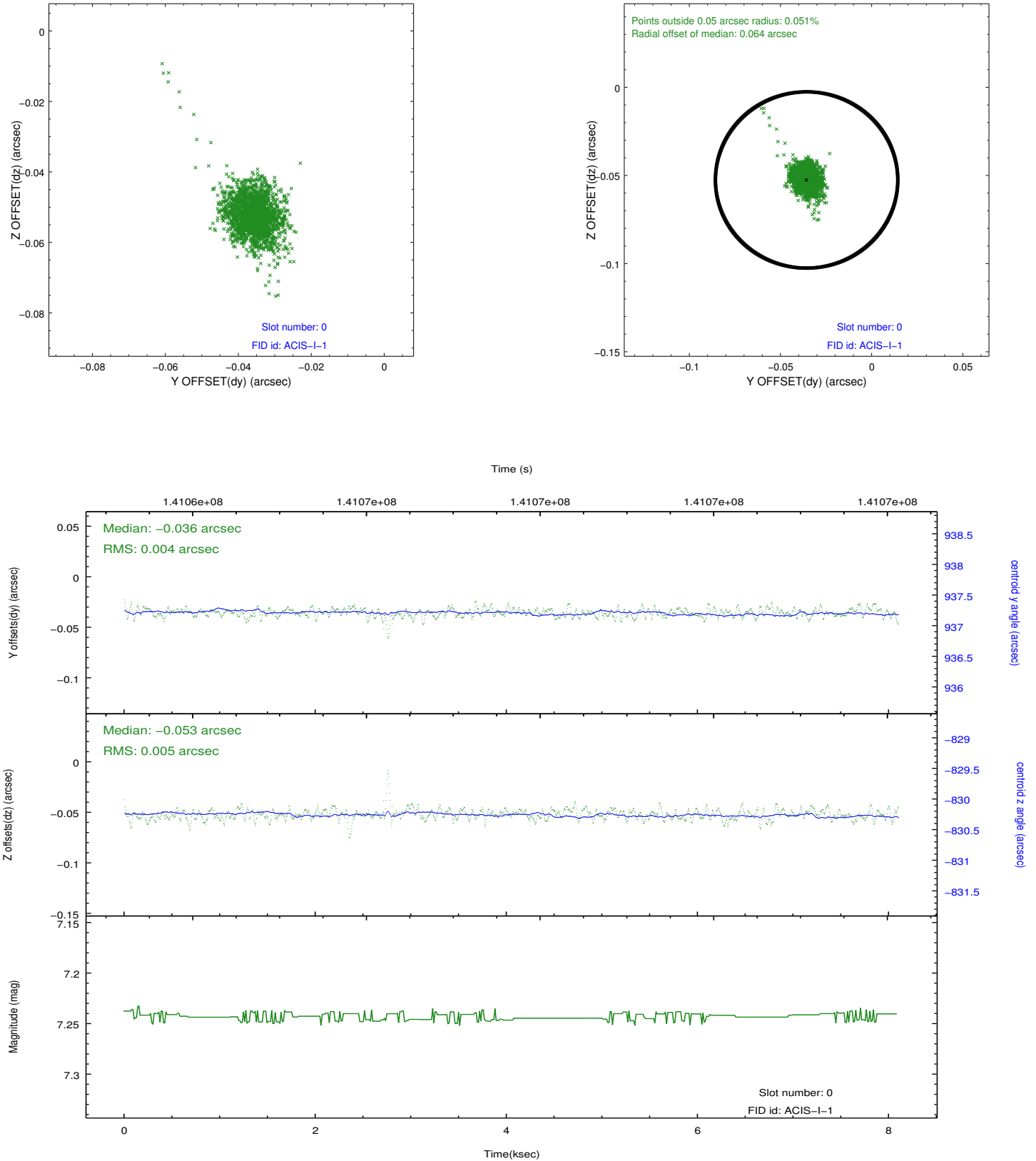


2.4.5 Slot 7

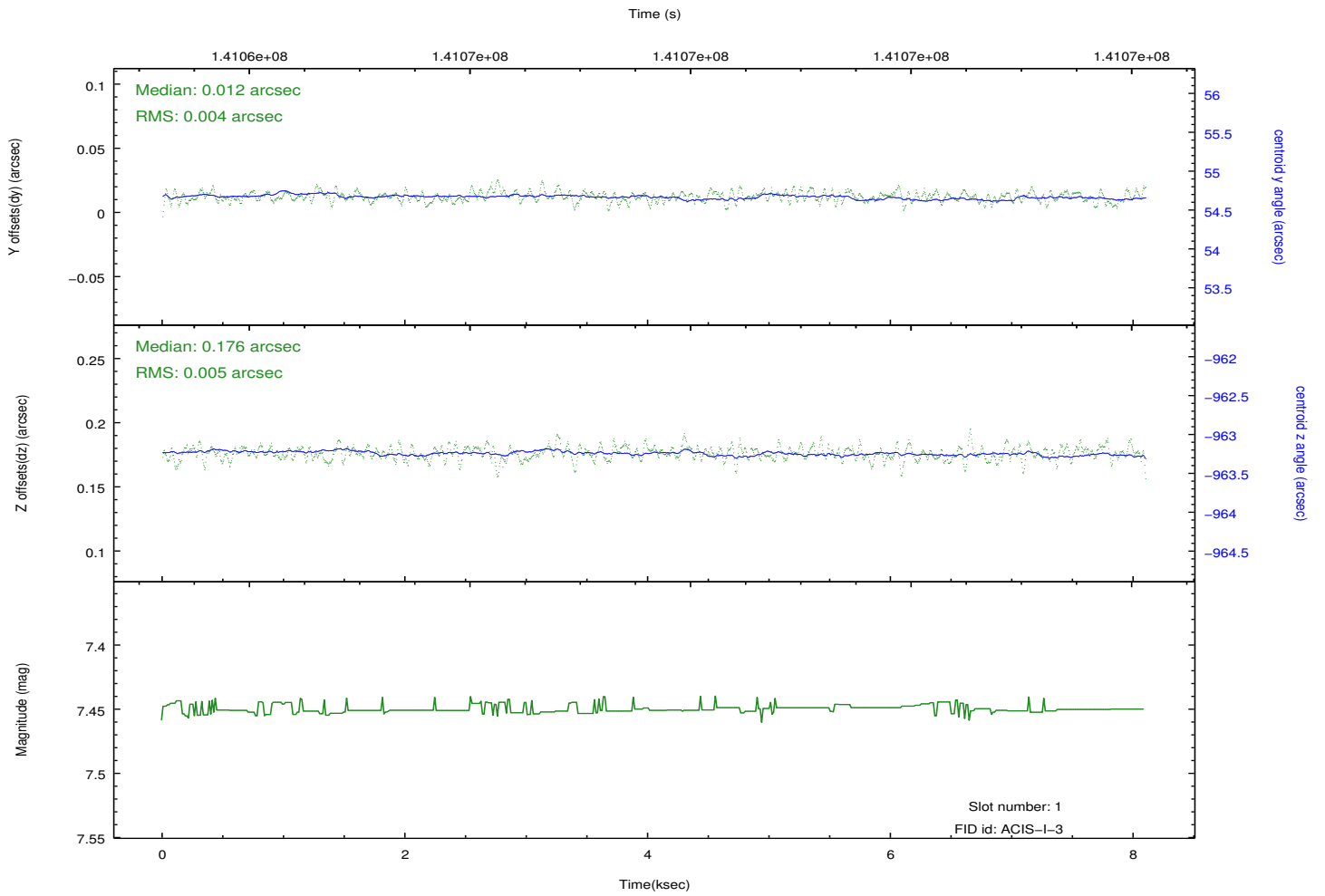
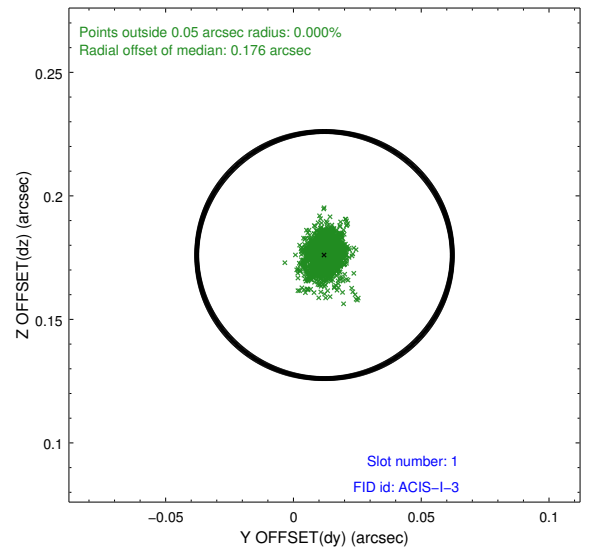
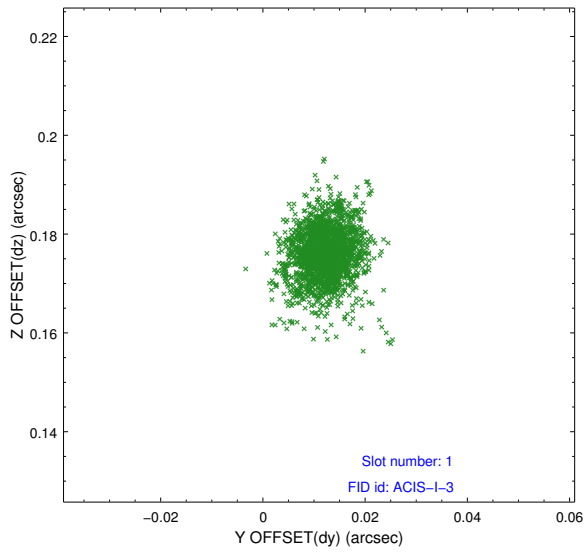


2.5 FID Slots

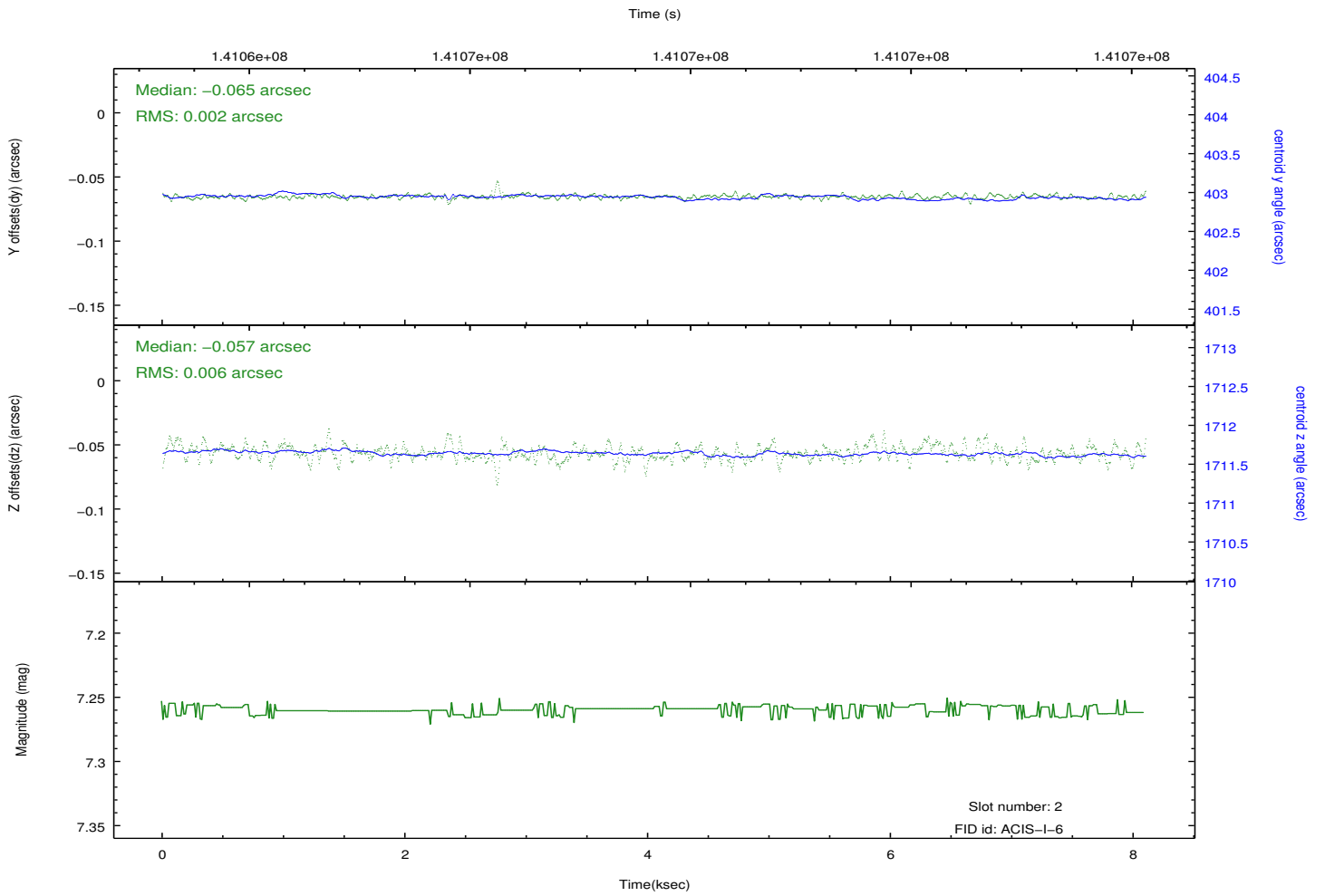
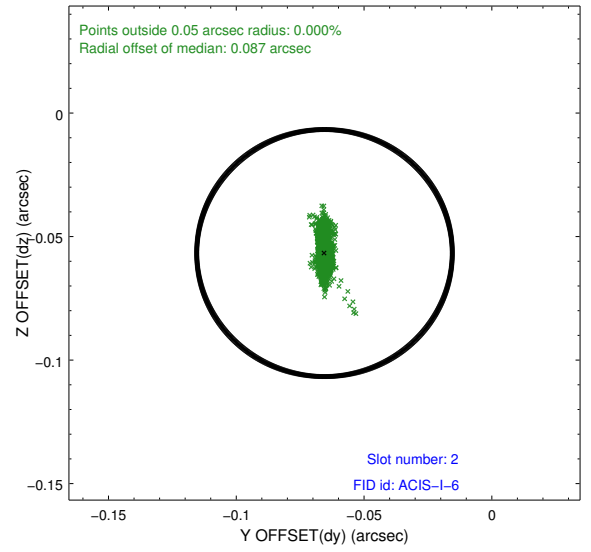
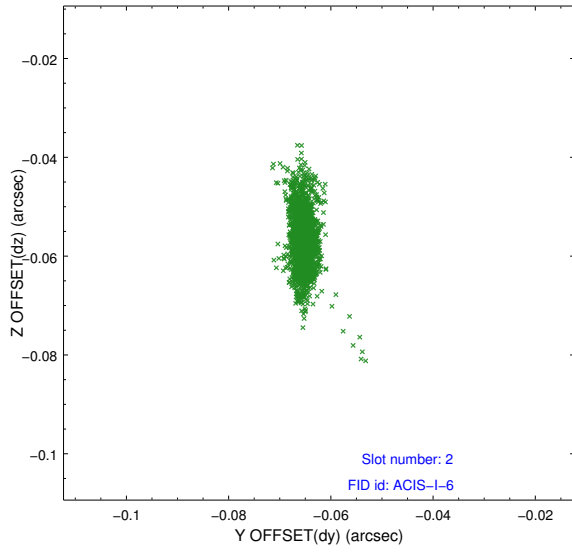
2.5.1 Slot 0



2.5.2 Slot 1



2.5.3 Slot 2



A Summary

A.1 Status

V&V Scientist	Jen Lauer
V&V Date (YYYY-MM-DD)	2012.10.19
V&V Edition	1
V&V Disposition and Status	OK
V&V Charge Time	7.66

A.2 Comments

Window constraint satisfied.