

V&V Reference Report

L2 ASCDS Version : 8.4.5

Observation 2933 - L2 Version 3
Chandra X-Ray Center

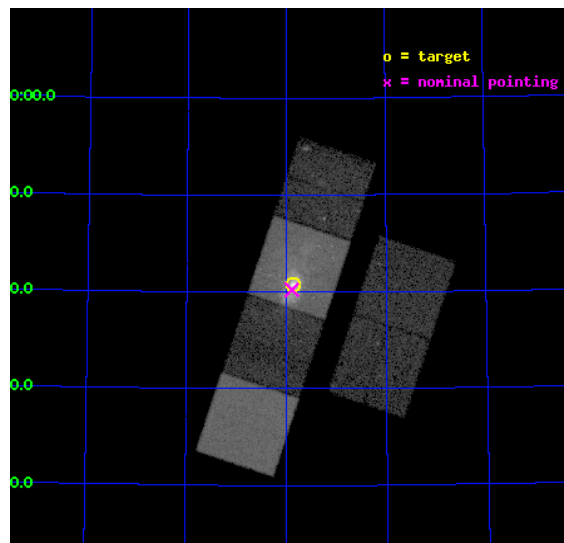
L2 Processing Date : Oct 9 2012

Contents

1	Front	2
2	OBI	3
2.1	OBI	3
2.1.1	Images	3
2.1.2	Bias	3
2.1.3	Parameters	4
2.1.4	Events	4
2.2	Compared Parameters	5
2.3	Aspect	6
2.4	Star Slots	9
2.4.1	Slot 3	9
2.4.2	Slot 4	10
2.4.3	Slot 5	11
2.4.4	Slot 6	12
2.4.5	Slot 7	13
2.5	FID Slots	14
2.5.1	Slot 0	14
2.5.2	Slot 1	15
2.5.3	Slot 2	16
A	Summary	17
A.1	Status	17
A.2	Comments	17

1 Front

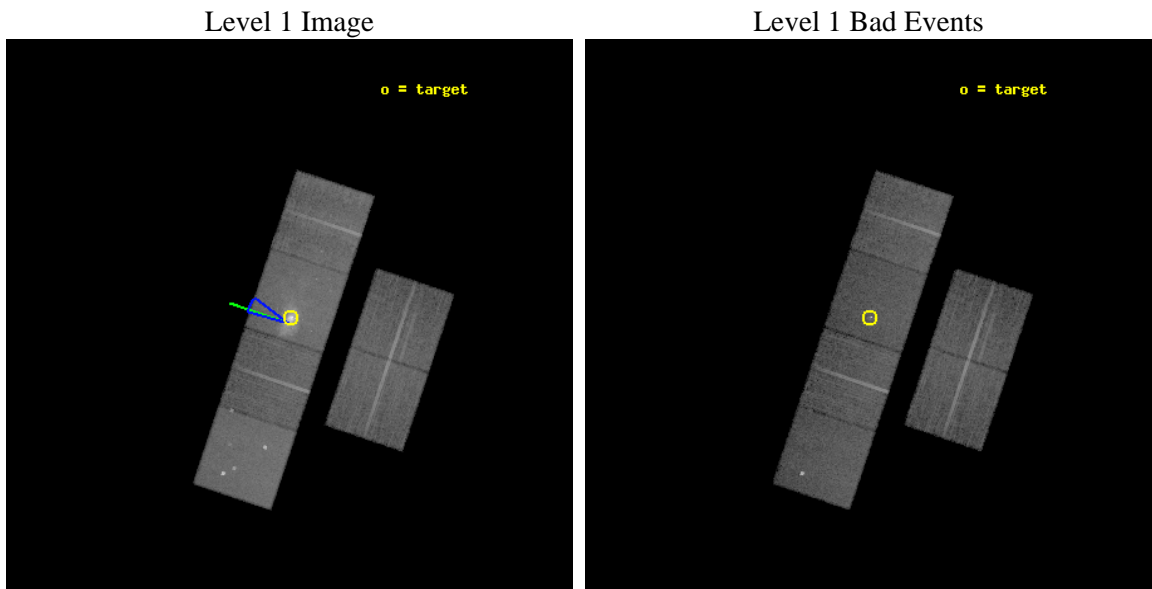
seq_num	600270	Sequence number
obs_id	2933	Observation id
title	RESOLVING THE ORIGIN OF X-RAY EMISSION IN A COMPLETE SAMPLE OF LOCAL STARBURST-DRIVEN SUPERWINDS	Proposal title
observer	Dr David Strickland	Principal investigator
object	M82	Source name
dtcycle	0	
cycle	P	events from which exps? Prim/Second/Both
ra_targ	148.969167	Observer's specified target RA [deg]
dec_targ	69.67975	Observer's specified target Dec [deg]
ra_nom	148.97323705132	Nominal RA [deg]
dec_nom	69.670179073122	Nominal Dec [deg]
roll_nom	288.44914711744	Nominal Roll [deg]
revision	3	Processing version of data
ontime	18254.853457749	Sum of GTIs [s]
livetime	18023.699511514	Livetime [s]
ontime2	18254.894497752	Sum of GTIs [s]
ontime3	18254.730317861	Sum of GTIs [s]
ontime5	18254.812417746	Sum of GTIs [s]
ontime6	18254.771377742	Sum of GTIs [s]
ontime7	18254.853457749	Sum of GTIs [s]
ontime8	18251.448207945	Sum of GTIs [s]
l2events	258043	Number of level 2 events



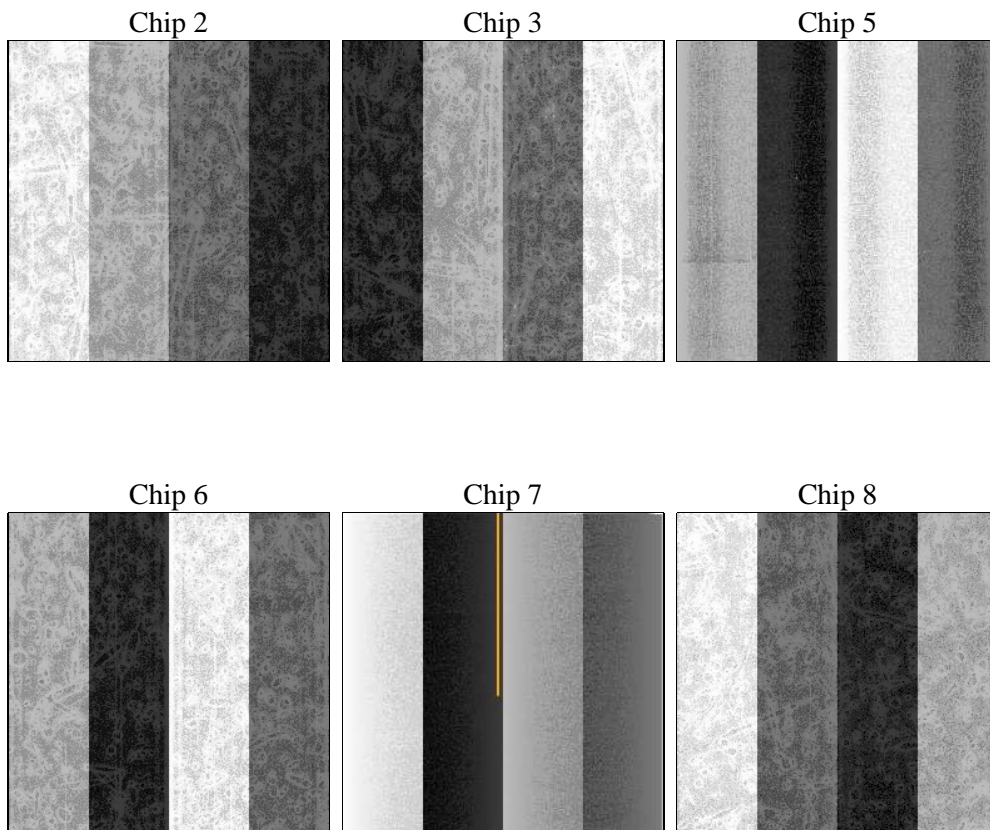
2 OBI

2.1 OBI

2.1.1 Images



2.1.2 Bias



2.1.3 Parameters

obi_num	0	Obi number	sched_exp_time	18500.000000	[s] Scheduled observation exposure time
ascdsver	8.4.5	Processing system revision	ontime	18254.853457749	Sum of GTIs [s]
caldbver	4.5.2	 	ontime2	18254.894497752	Sum of GTIs [s]
date	2012-10-09T05:30:24	Date and time of file creation	ontime3	18254.730317861	Sum of GTIs [s]
revision	3	Processing version of data	ontime5	18254.812417746	Sum of GTIs [s]
			ontime6	18254.771377742	Sum of GTIs [s]
			ontime7	18254.853457749	Sum of GTIs [s]
			ontime8	18251.448207945	Sum of GTIs [s]
			l1events	908006	Number of level 1 events

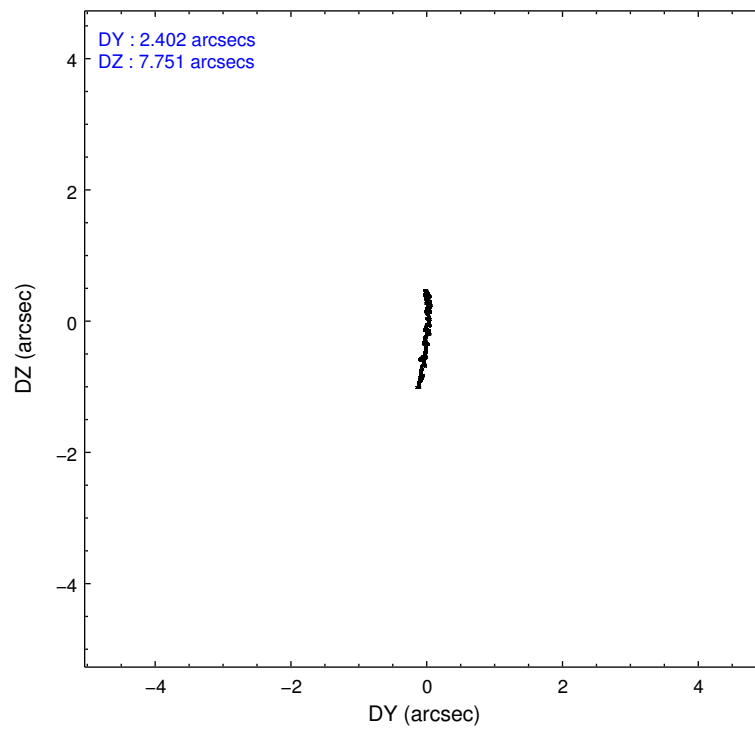
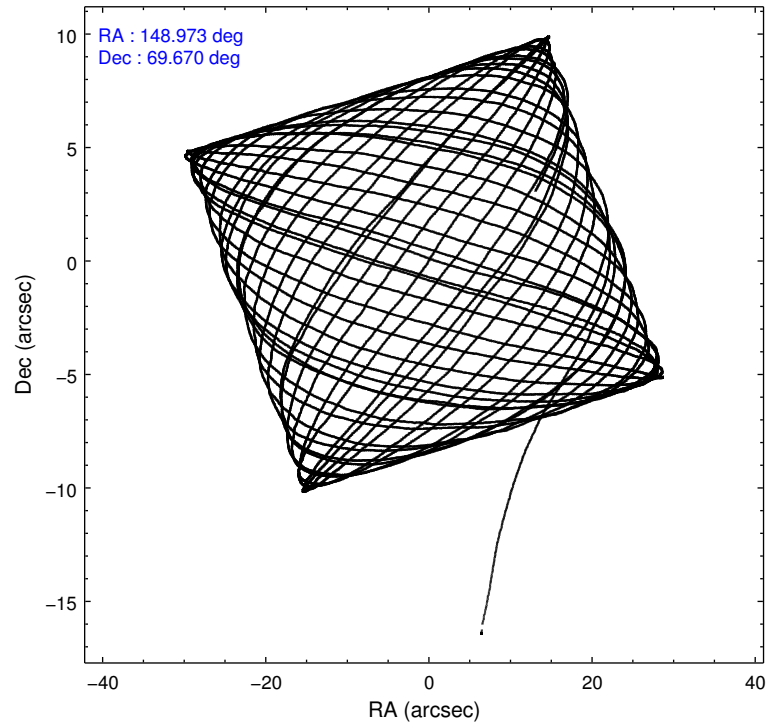
2.1.4 Events

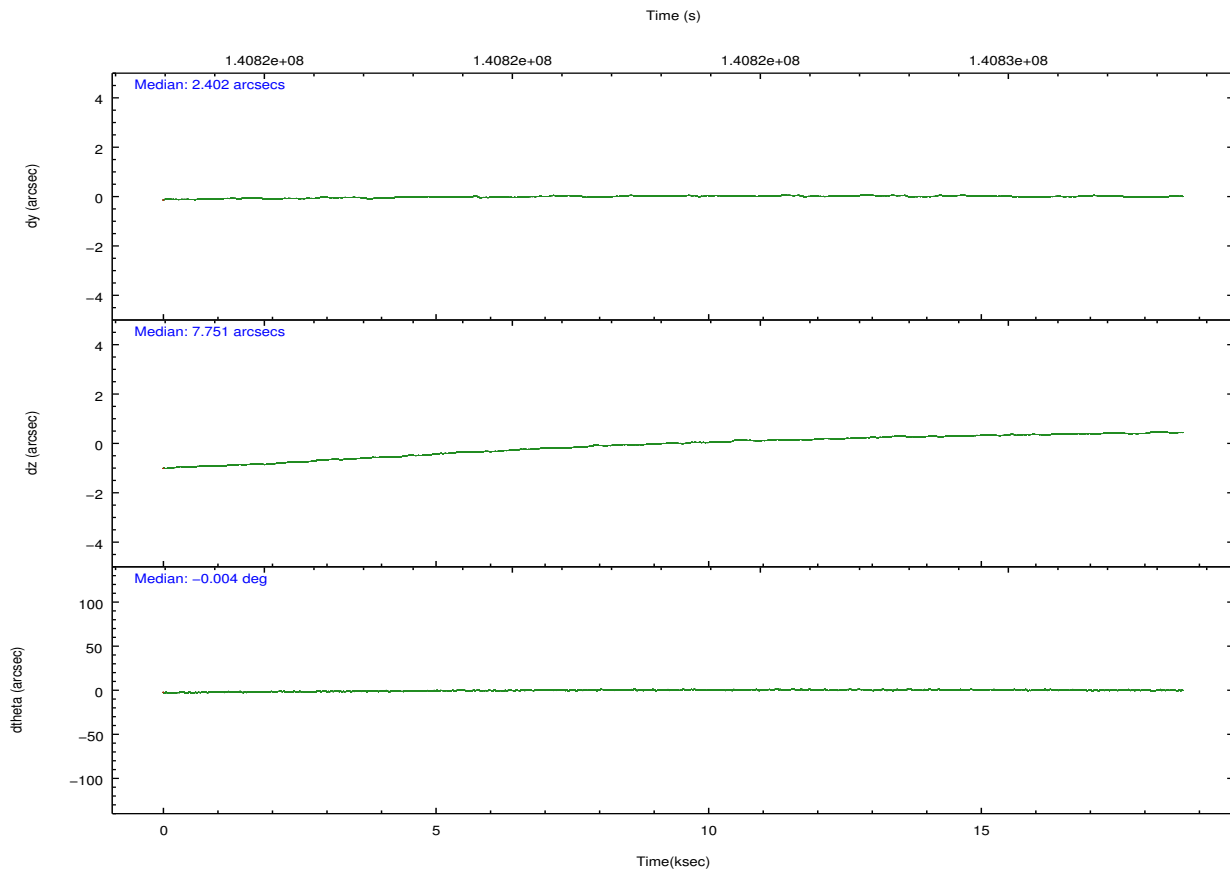
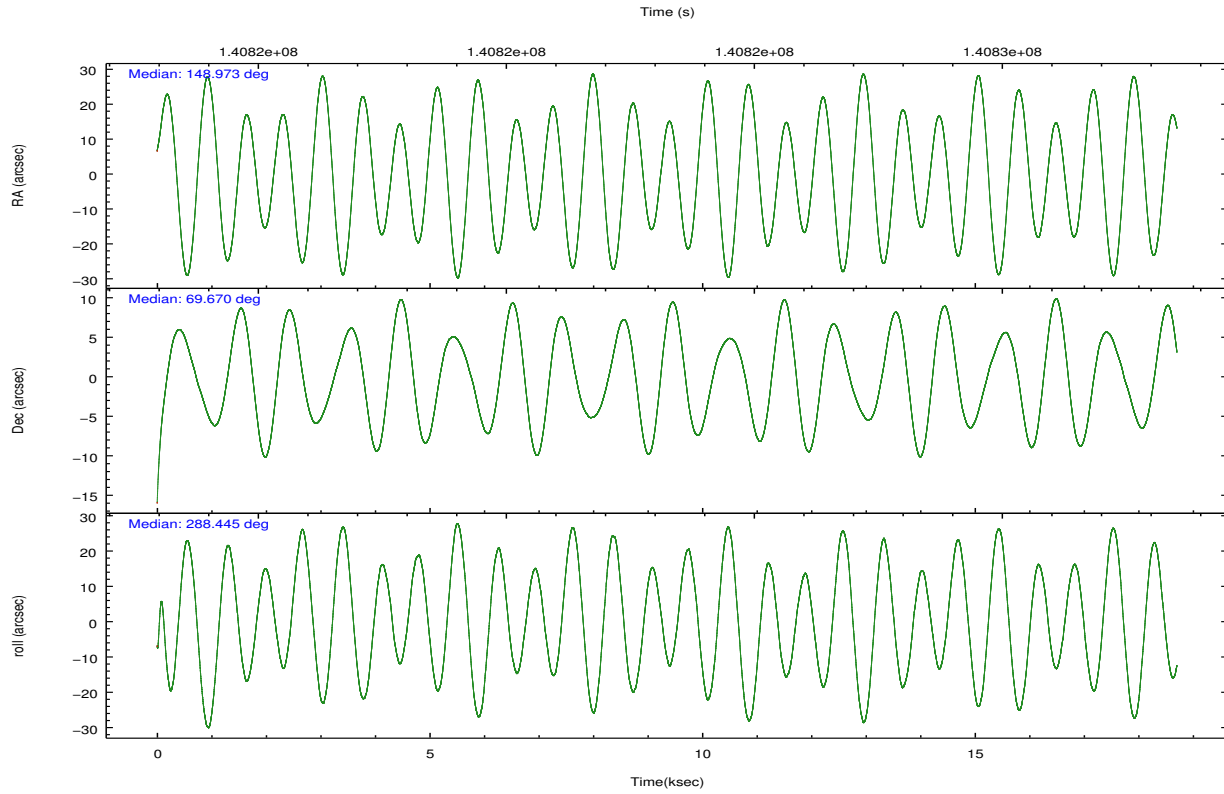
	ccd 2	ccd 3	ccd 5	ccd 6	ccd 7	ccd 8		ccd 2	ccd 3	ccd 5	ccd 6	ccd 7	ccd 8
level 1 events	120141	112356	174729	118567	233764	148449	grade 0 events	5810	5599	11132	6378	29301	9877
rejected events	106492	99333	94768	103904	93567	117909		4%	4%	6%	5%	12%	6%
rejected %	88%	88%	54%	87%	40%	79%	grade 1 events	47	63	3781	58	361	80
								0%	0%	2%	0%	0%	0%
							grade 2 events	2987	2694	22854	2834	32924	6791
								2%	2%	13%	2%	14%	4%
							grade 3 events	1239	1221	3065	1356	14888	3067
								1%	1%	1%	1%	6%	2%
							grade 4 events	1204	1246	3128	1399	14342	2841
								1%	1%	1%	1%	6%	1%
							grade 5 events	4308	4794	12742	5253	15982	6379
								3%	4%	7%	4%	6%	4%
							grade 6 events	2412	2265	39813	2704	48785	8000
								2%	2%	22%	2%	20%	5%
							grade 7 events	102134	94474	78214	98585	77181	111414
								85%	84%	44%	83%	33%	75%

2.2 Compared Parameters

Parameter	Planned	Actual	Parameter	Planned	Actual
Instrument	ACIS	ACIS	Obspar format version number	7	7
Detector	ACIS-235678	ACIS-235678	Obspar file type	PREDICTED	ACTUAL
Grating	NONE	NONE	Obspar update status	NONE	UPDATED
Data mode	FAINT	FAINT	Number of optional ACIS chips dropped	0	0
Observation mode	POINTING	POINTING	On-chip summing requested	N	N
[deg] Pointing RA	148.913803	148.9732370513214	Subarray requested	NONE	NONE
[deg] Pointing Dec	69.687975	69.6701790731222	Alternating exposures requested	N	N
[deg] Pointing Roll	288.348272	288.4491471174352	[s] Primary exposure time	0.000000	3.2
[deg] Roll angle	295.000000	295.000000			
[deg] Roll tolerance	10.000000	10.000000			
Roll constraint allows 180D rotation	N	N			
[mm] SIM focus pos	-0.684267	-0.6828225247311905			
[mm] SIM defocus	0	0.001444936568705701			
[mm] SIM translation stage pos	-190.132523	-190.1425803651734			
[mm] SIM translation stage offset	0	0.01005778216563158			
[s] Observation start time (MET)	140814087.184000	140813303.29072			
Observation start date	2002-06-18T19:00:23	2002-06-18T18:48:23			
[s] Observation end time (MET)	140832587.184000	140833372.79154			
Observation end date	2002-06-19T00:08:43	2002-06-19T00:22:52			
Read mode	TIMED	TIMED			

2.3 Aspect



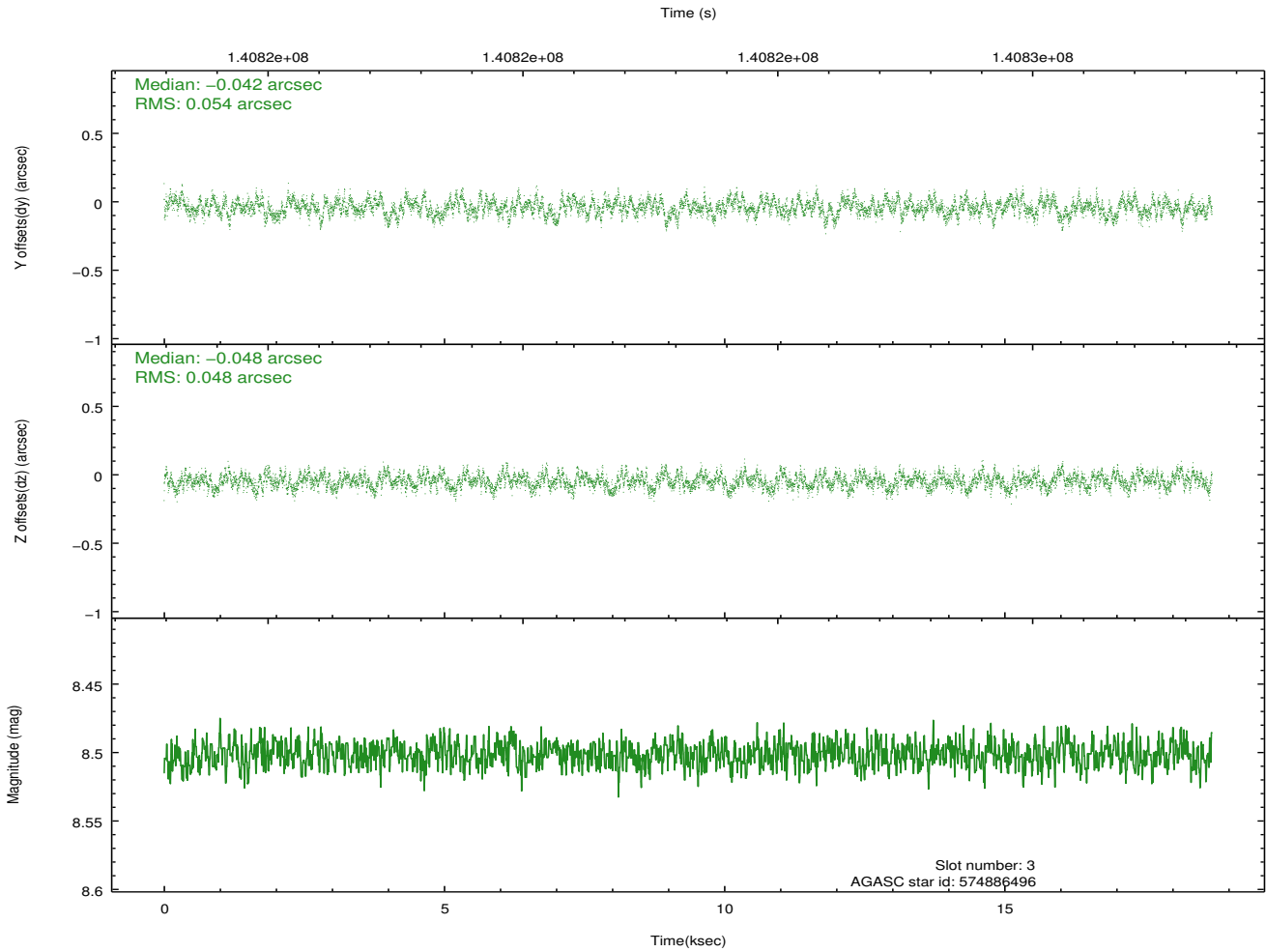
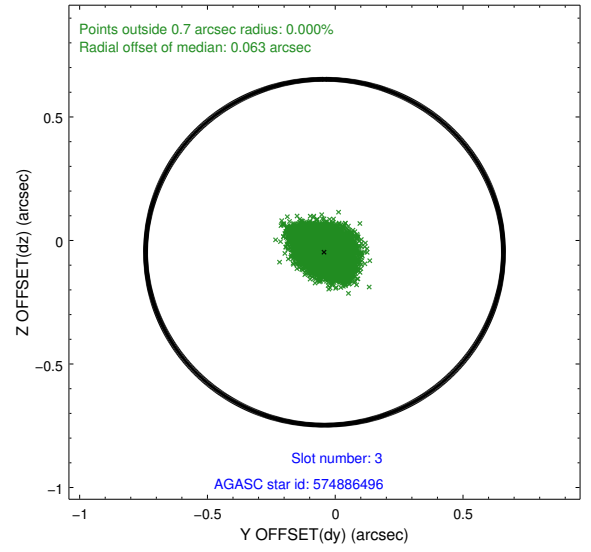
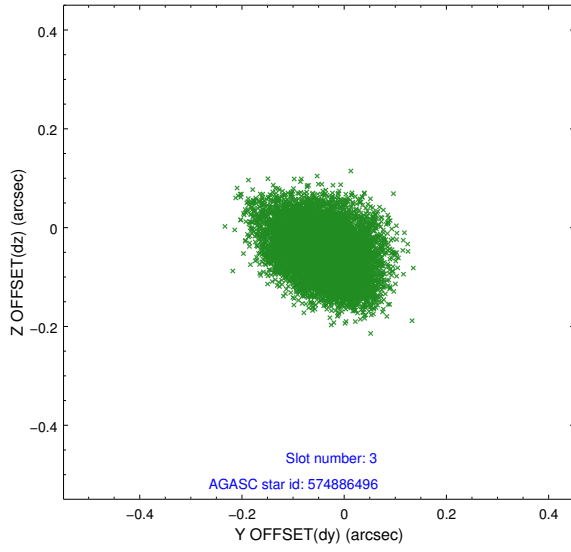


Slot Statistics

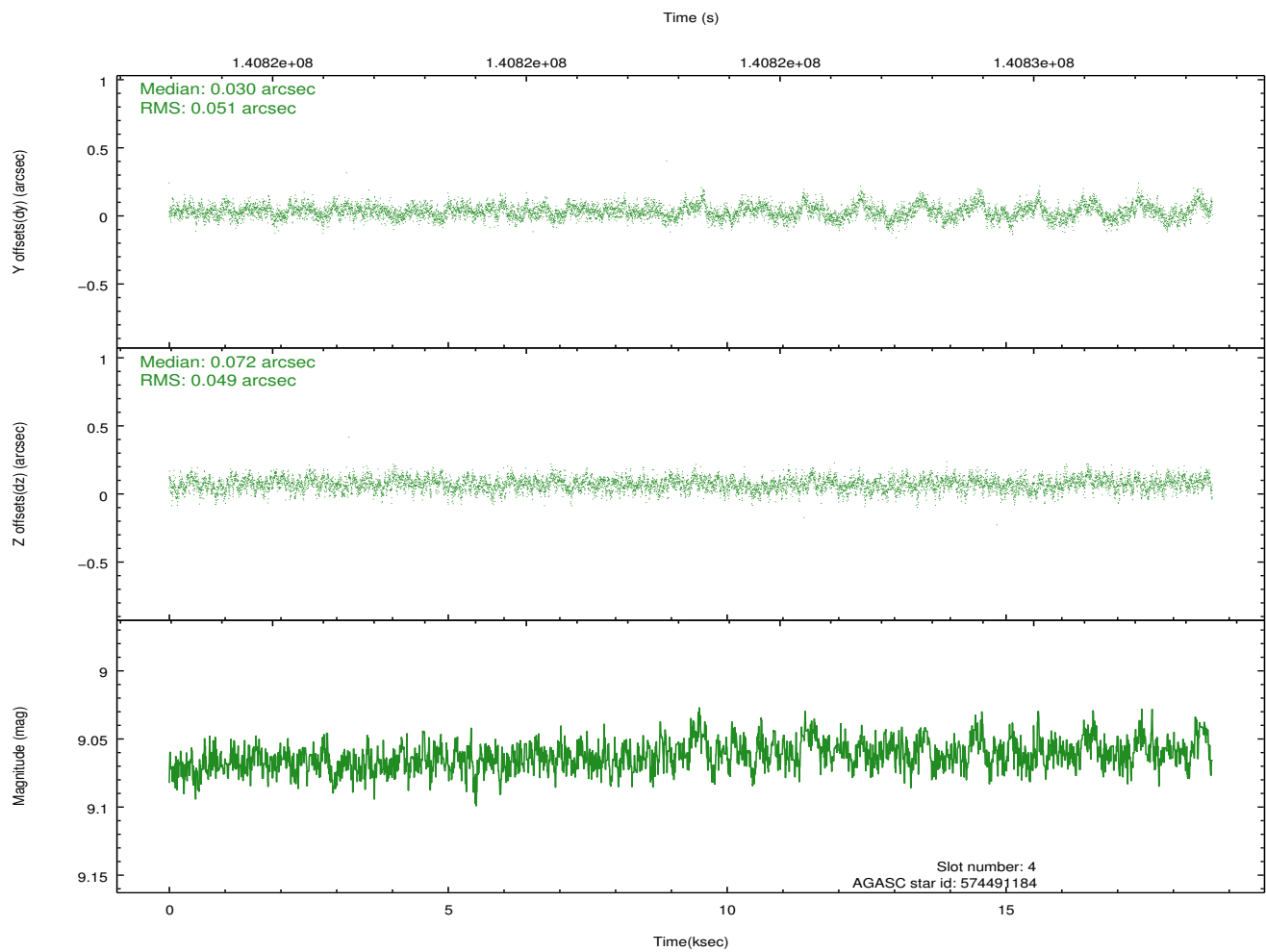
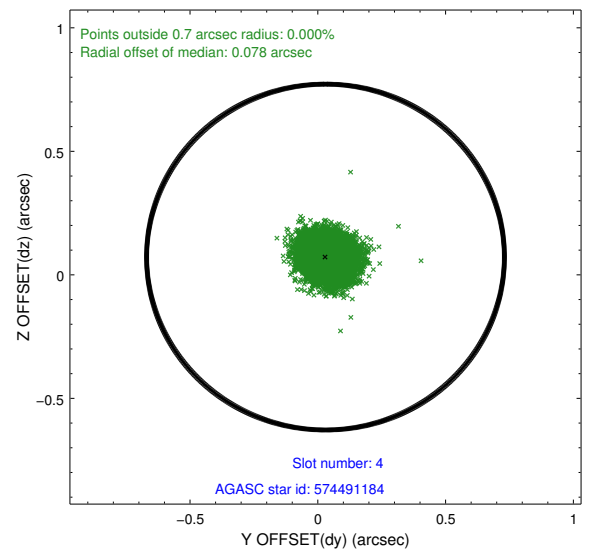
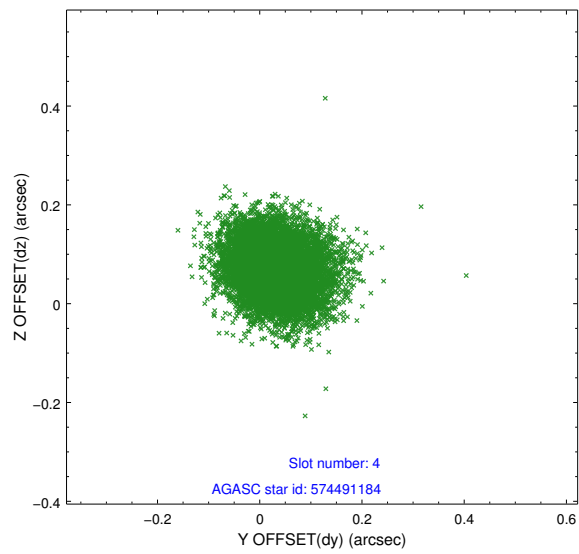
slot	status	id	mag	n_pts	med_dy	med_dz	dr1	dr2	ra	dec	mean_y	mean_z
0	FID	ACIS-S-2	7.11	4561	-0.008	0.010	0.012	0.024	0.000000	0.000000	-755.03	-1728.76
1	FID	ACIS-S-4	7.20	4562	-0.046	0.001	0.008	0.029	0.000000	0.000000	2158.12	179.49
2	FID	ACIS-S-5	7.24	4560	0.022	-0.001	0.012	0.025	0.000000	0.000000	-1807.57	173.41
3	GUIDE	574886496	8.50	9119	-0.042	-0.048	0.078	0.125	148.945563	70.041136	-1194.99	438.14
4	GUIDE	574491184	9.06	9121	0.030	0.072	0.075	0.122	148.582453	69.768699	-407.21	-298.60
5	GUIDE	574491872	9.28	9119	0.059	-0.049	0.144	0.222	147.207613	69.765453	-961.05	-1918.50
6	GUIDE	574491280	9.34	9119	0.055	-0.051	0.090	0.144	148.611567	69.450135	691.32	-631.31
7	GUIDE	574489568	9.77	9115	-0.119	0.088	0.106	0.170	147.223974	69.438157	152.85	-2300.49

2.4 Star Slots

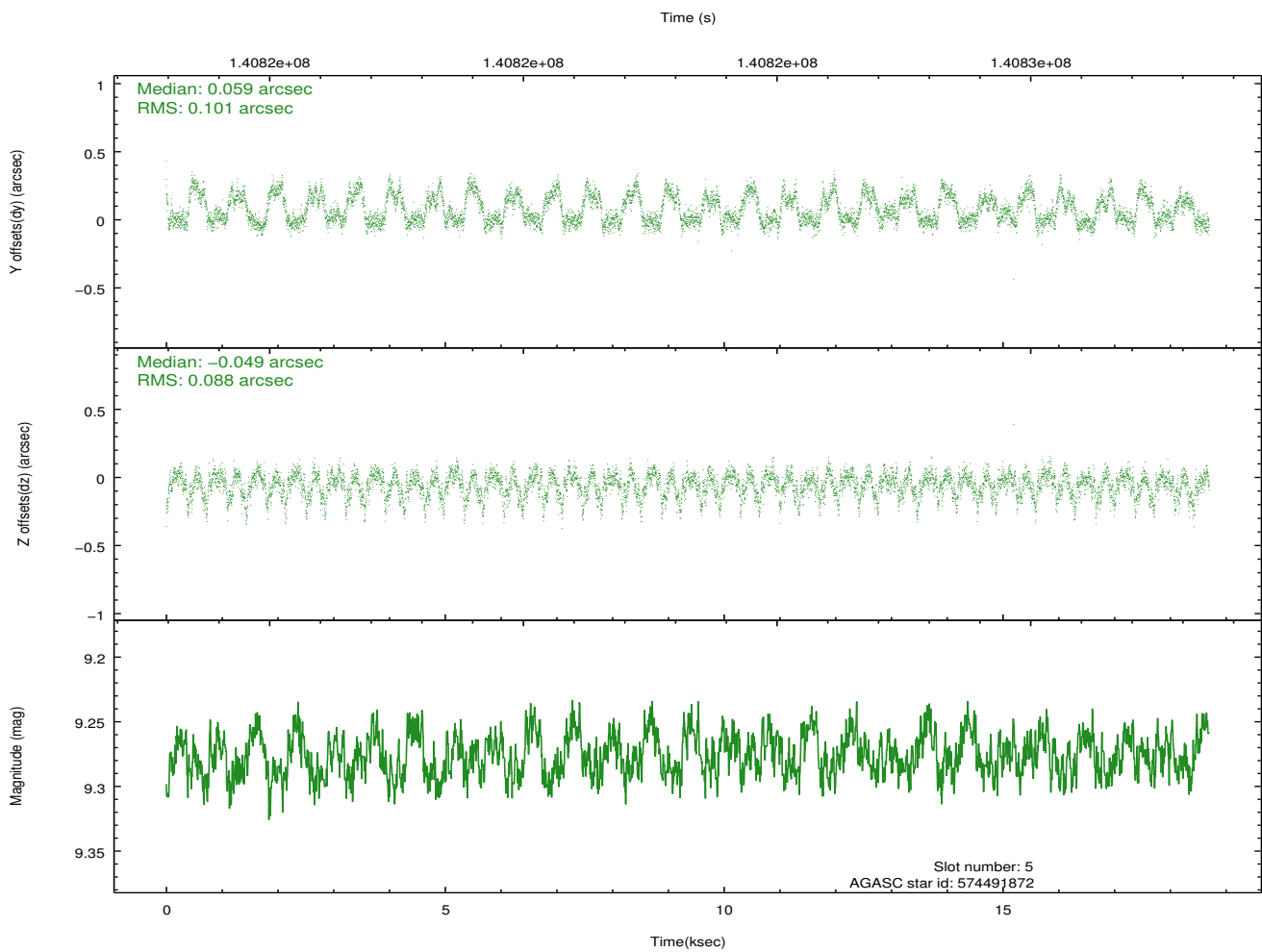
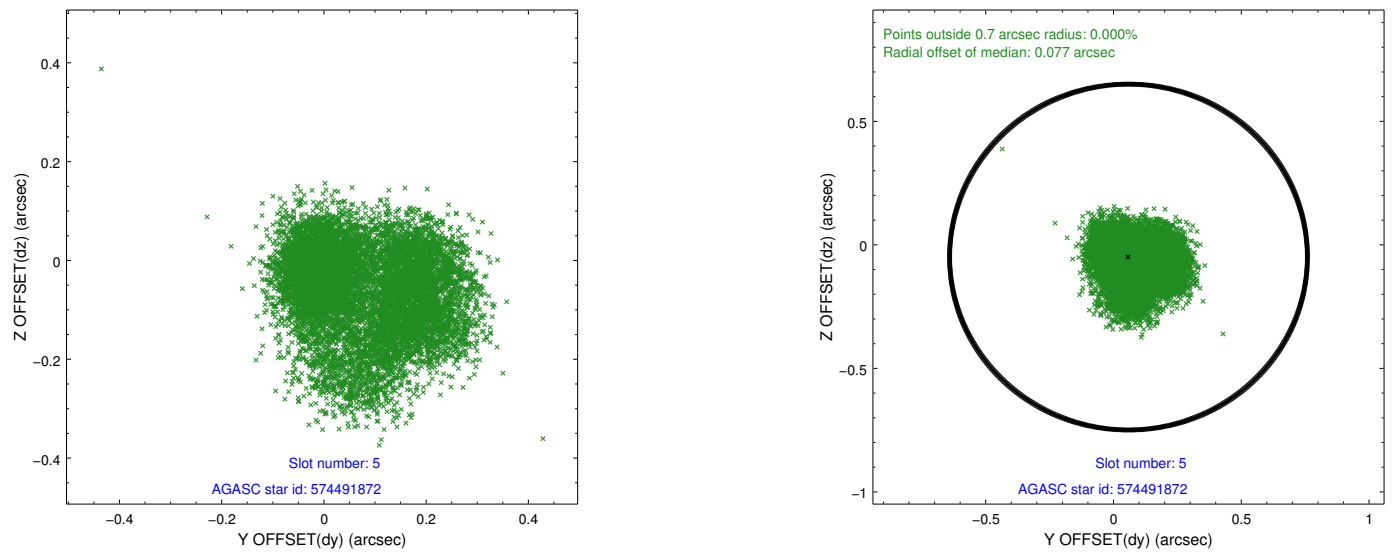
2.4.1 Slot 3



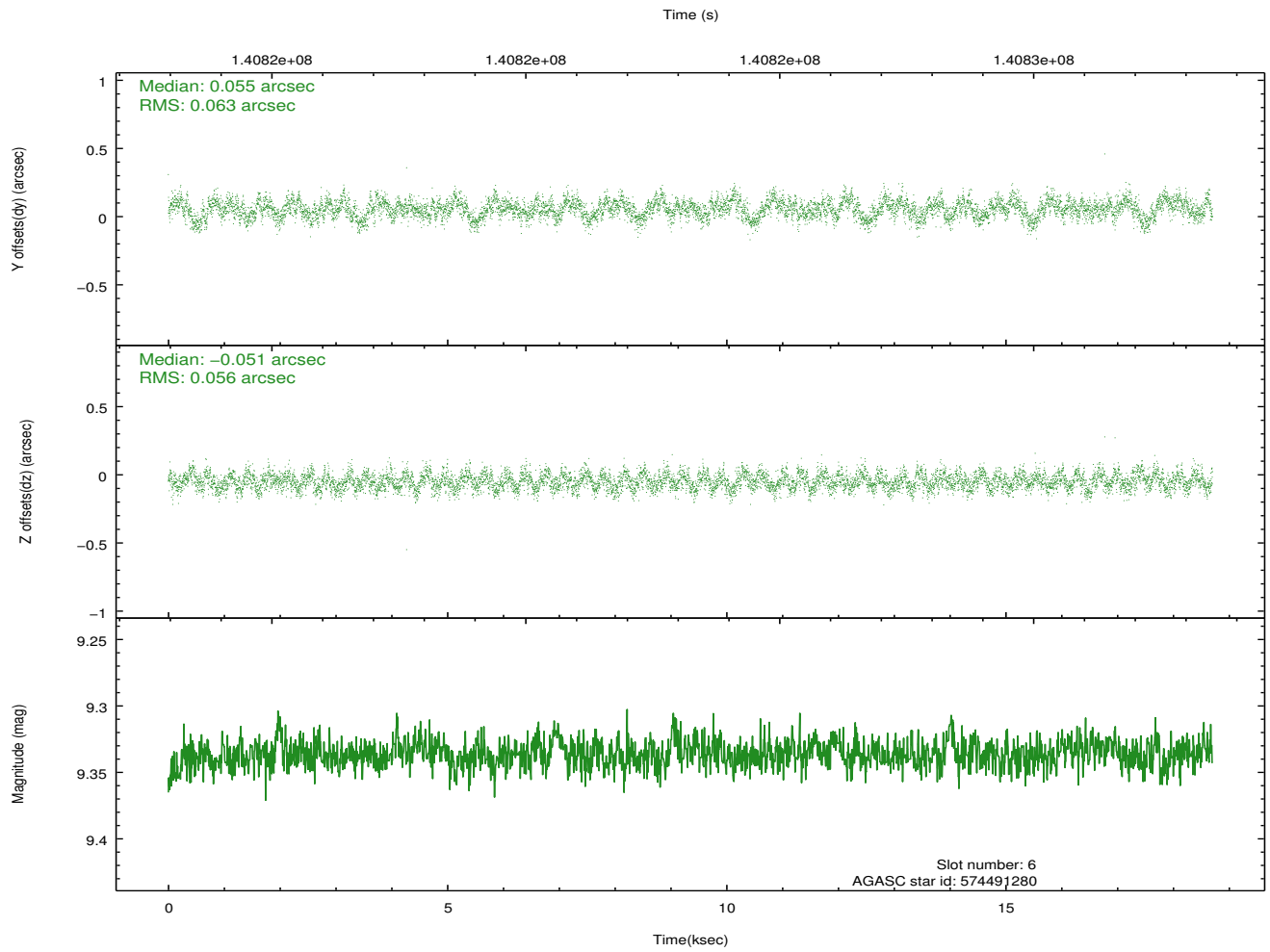
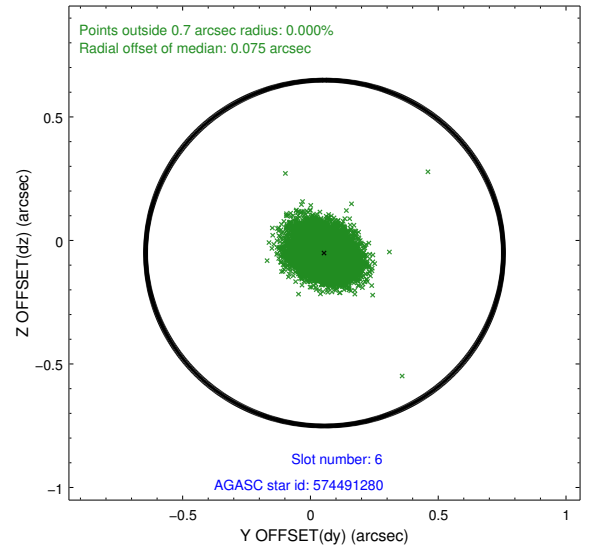
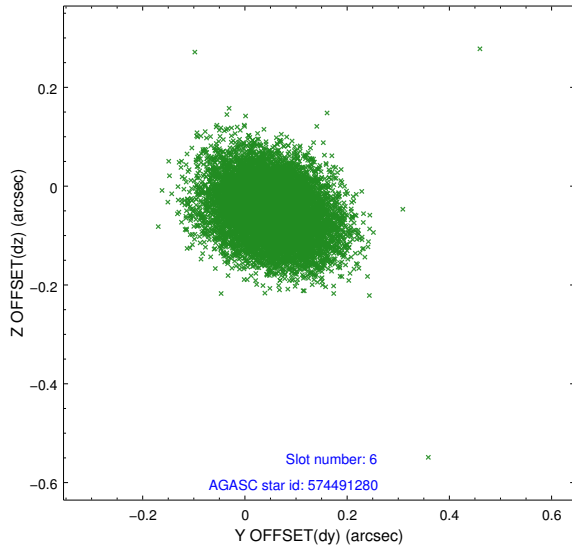
2.4.2 Slot 4



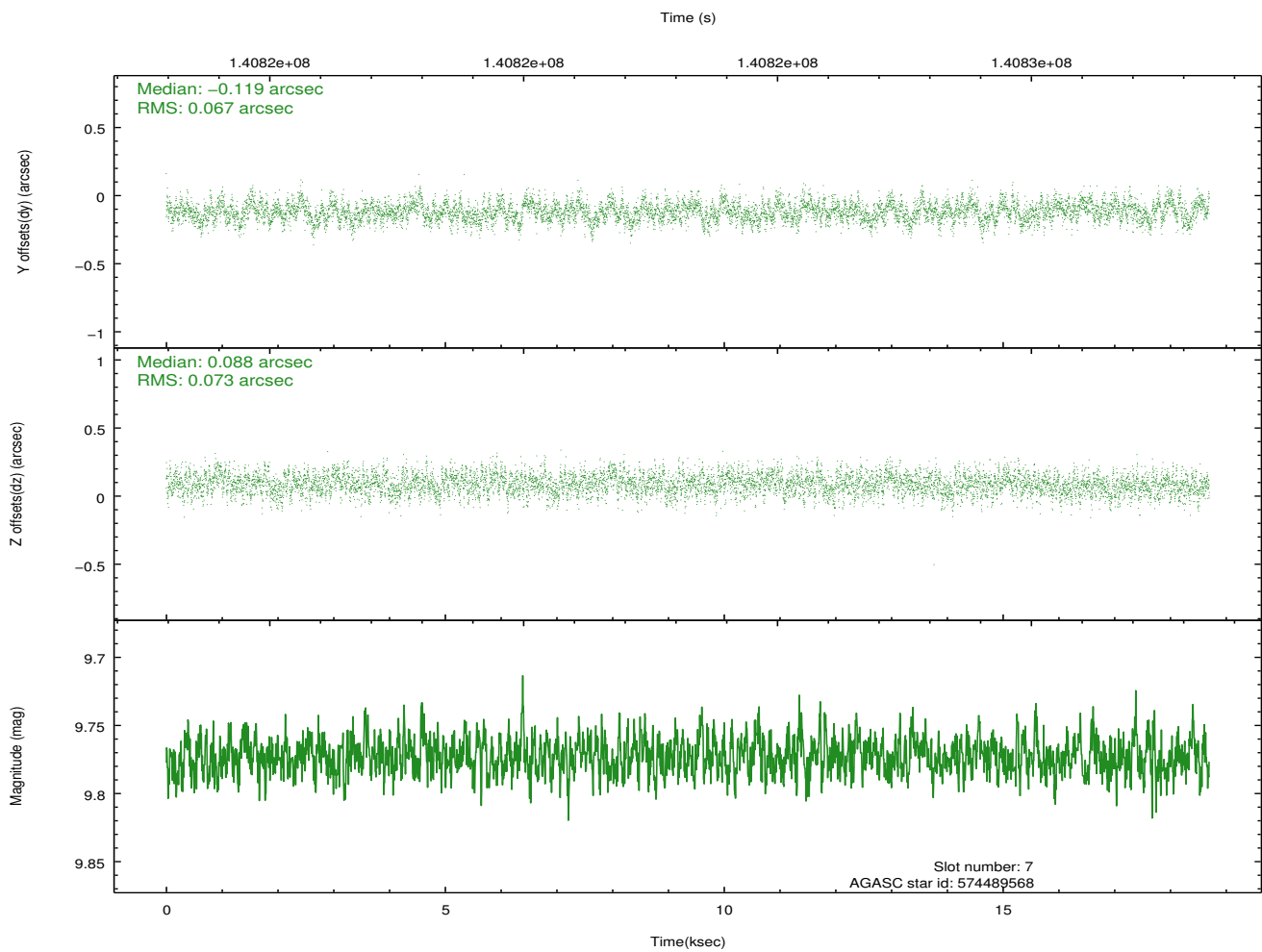
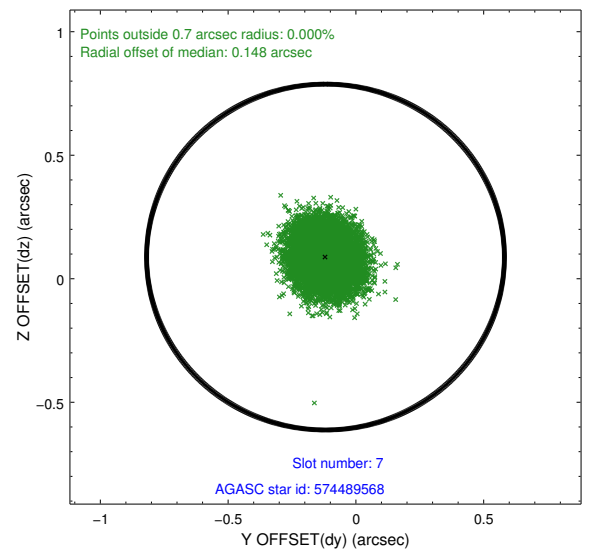
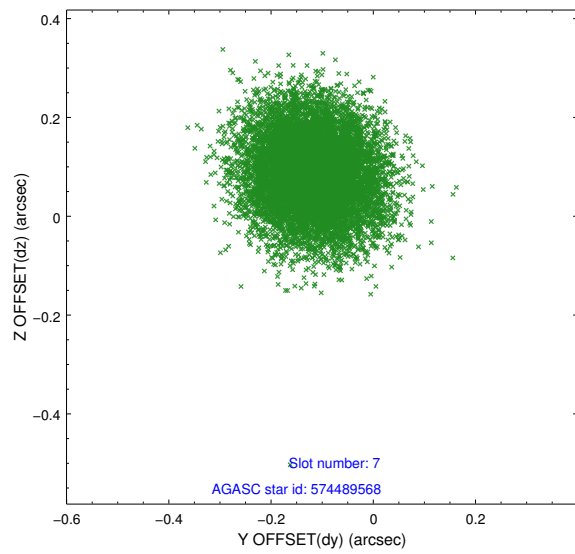
2.4.3 Slot 5



2.4.4 Slot 6

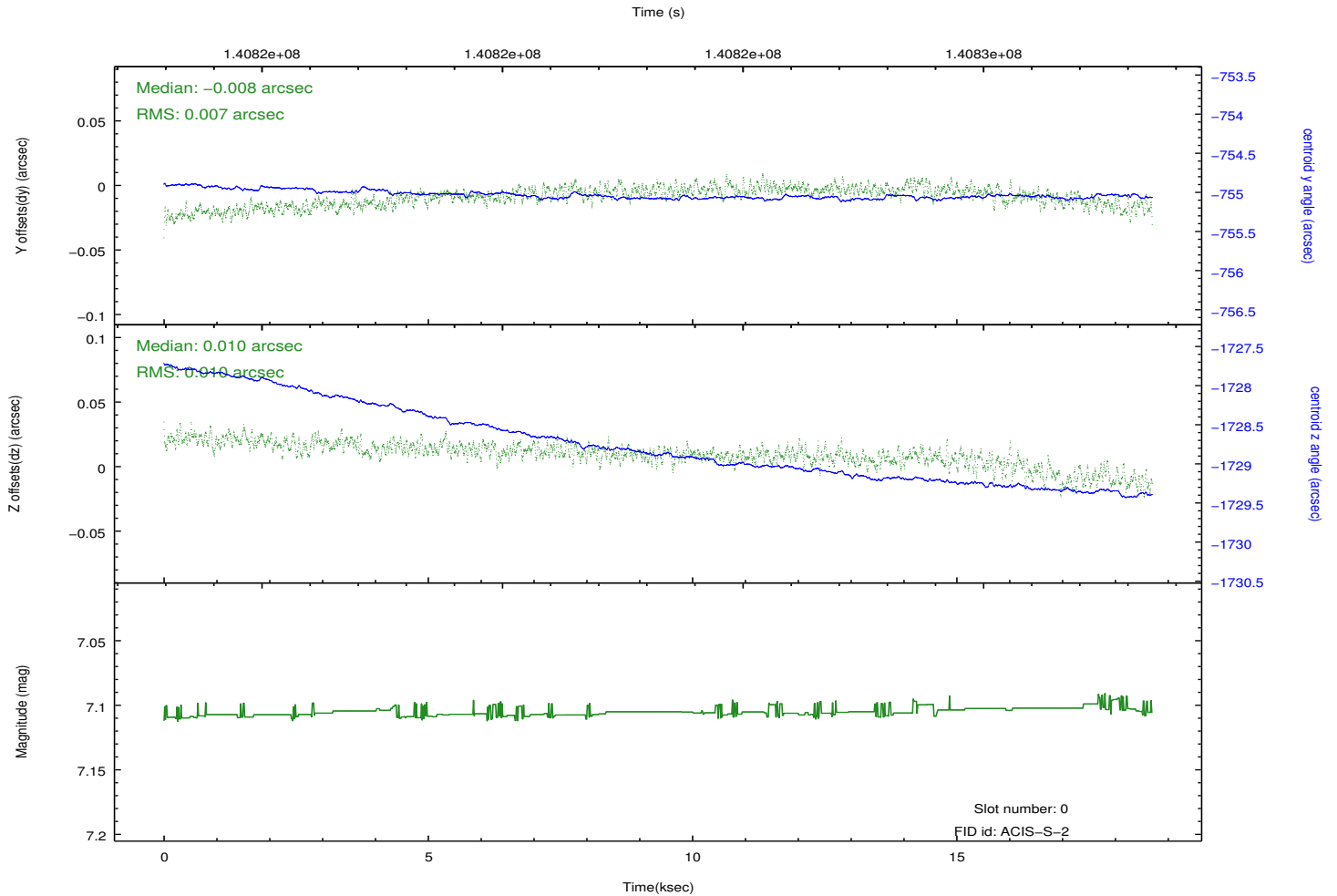
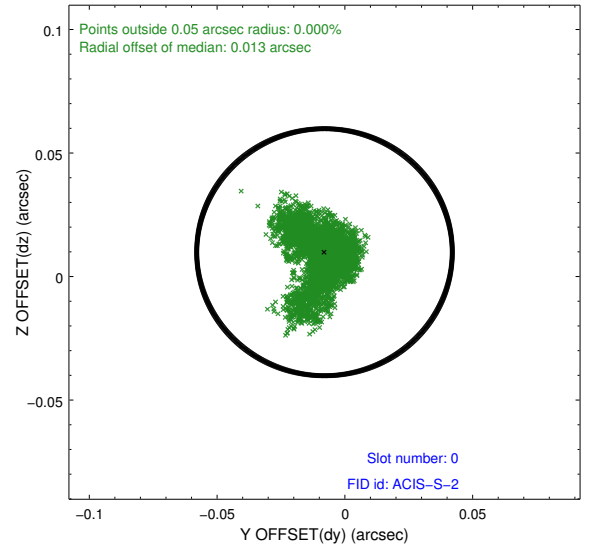
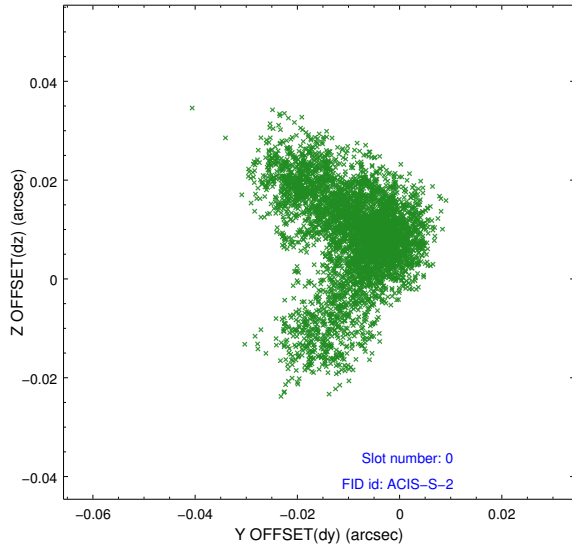


2.4.5 Slot 7

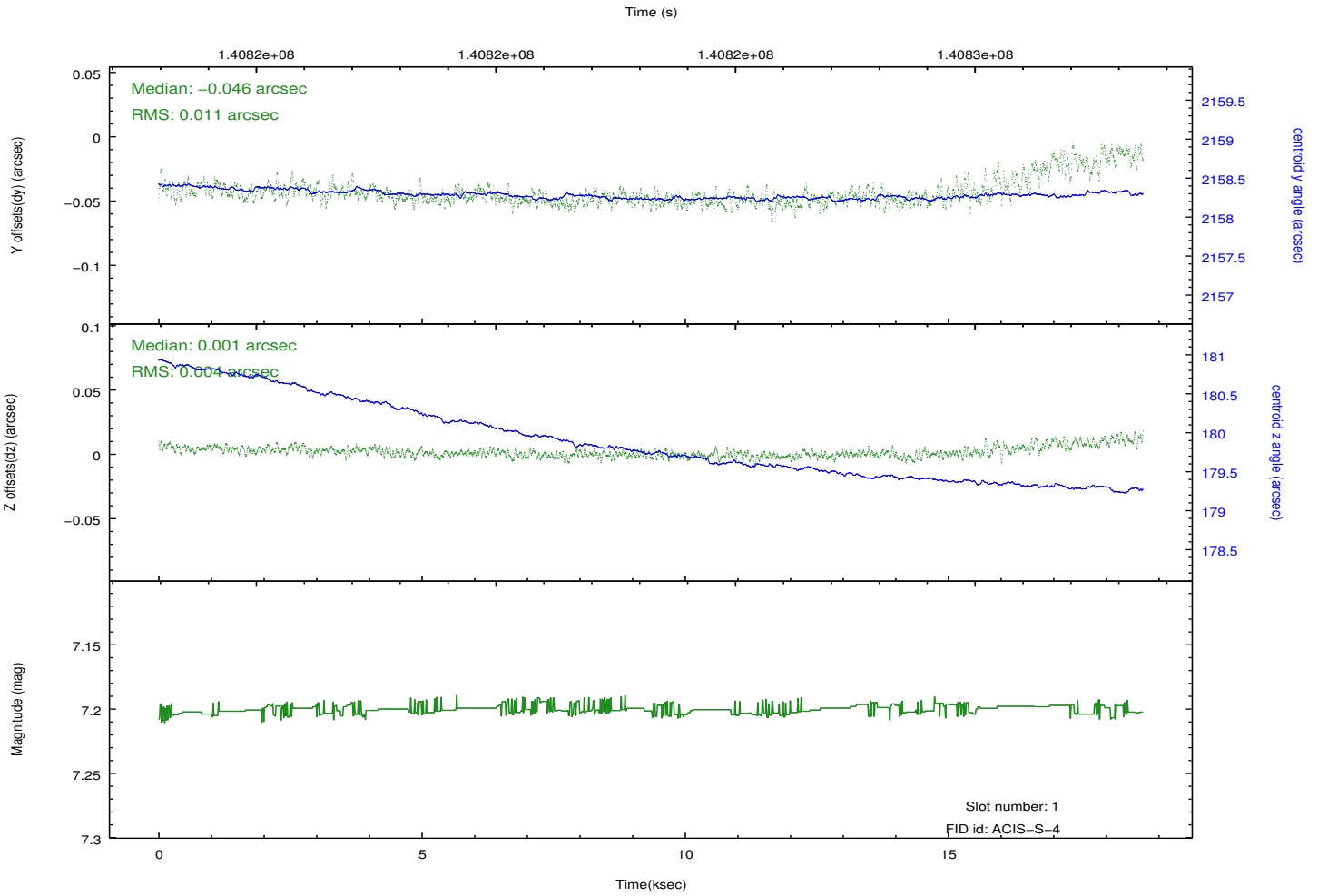
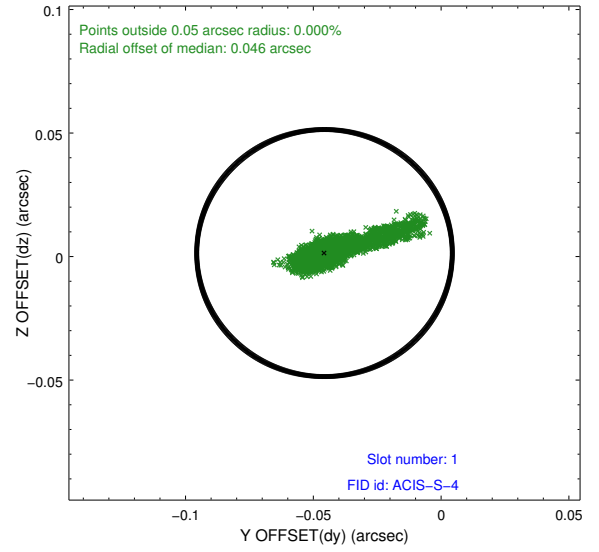
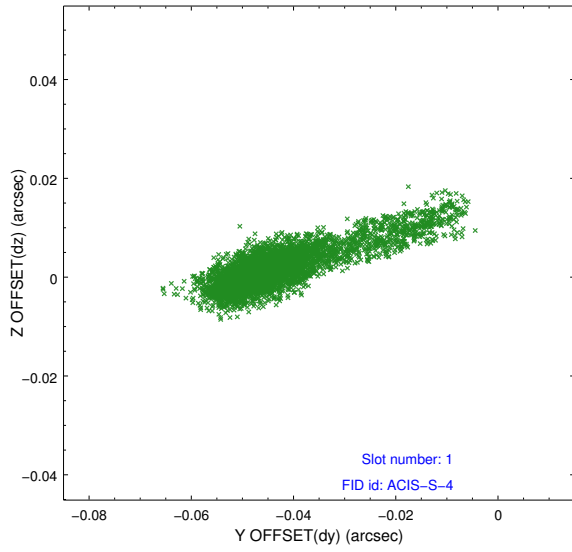


2.5 FID Slots

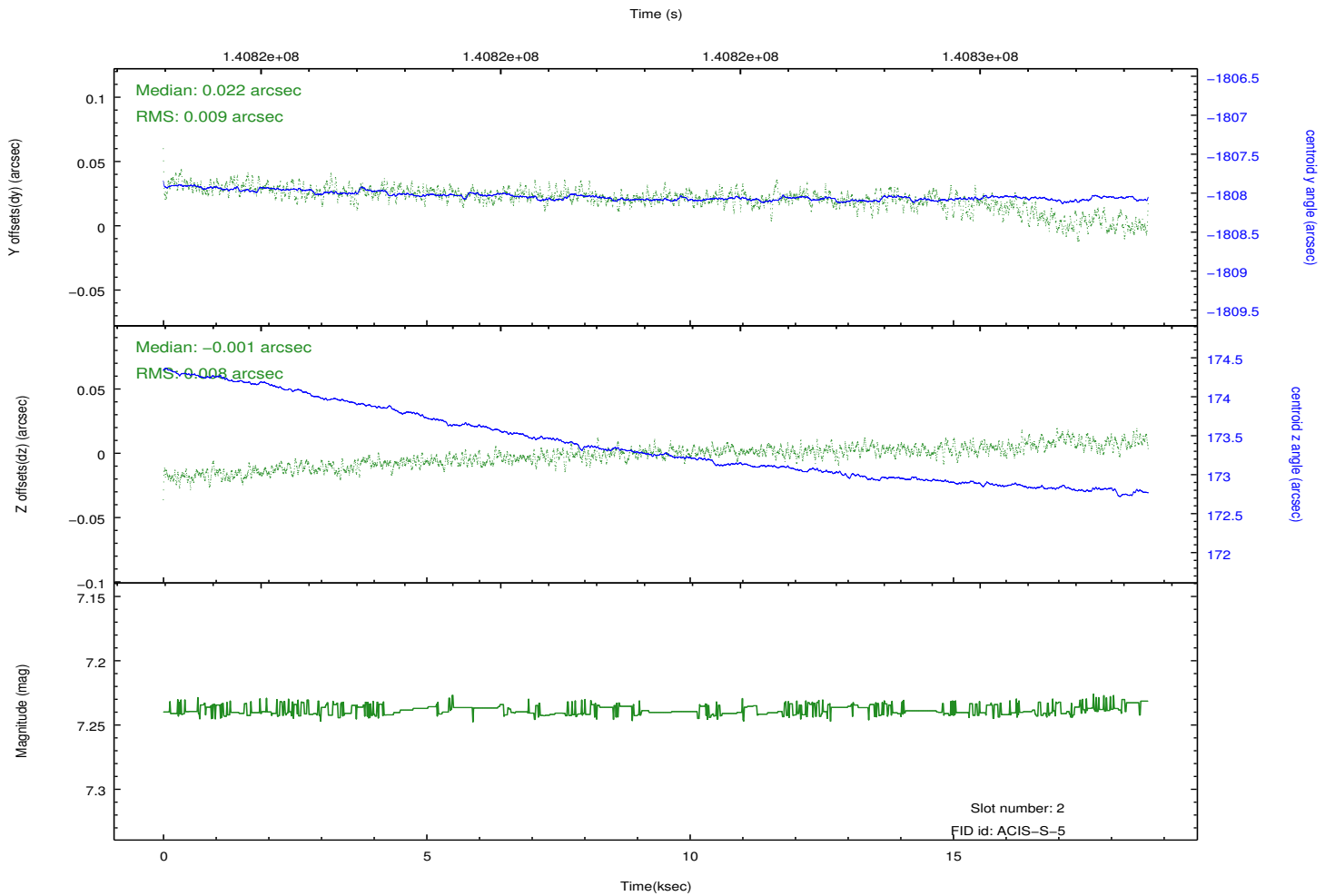
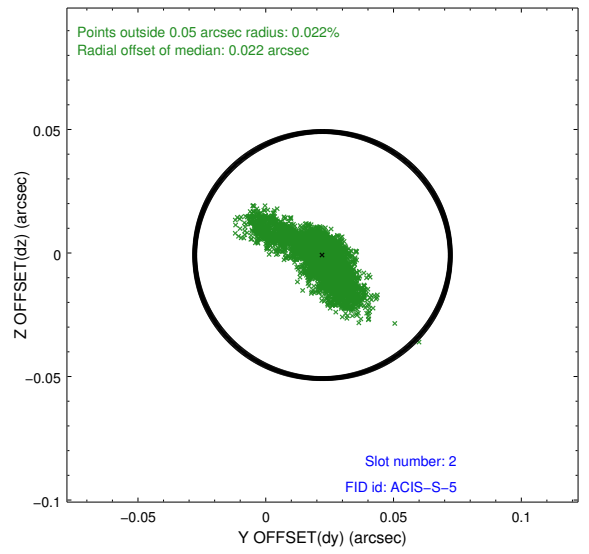
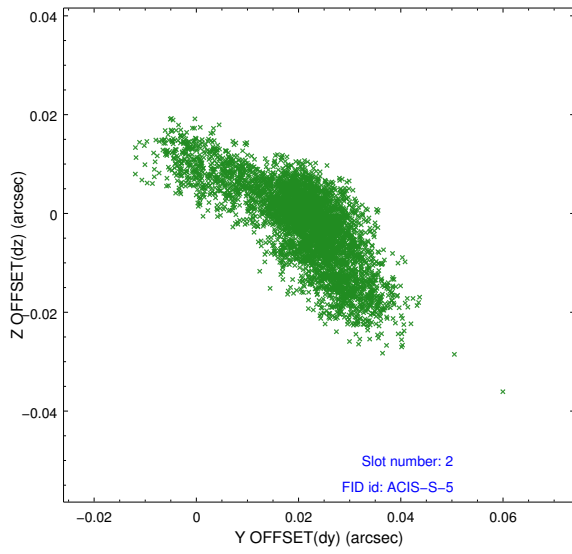
2.5.1 Slot 0



2.5.2 Slot 1



2.5.3 Slot 2



A Summary

A.1 Status

V&V Scientist	Jen Lauer
V&V Date (YYYY-MM-DD)	2012.10.18
V&V Edition	1
V&V Disposition and Status	OK
V&V Charge Time	18.255

A.2 Comments

Roll constraint satisfied.