

V&V Reference Report

L2 ASCDS Version : 7.6.8.1

Observation 2983 - L2 Version 001
Chandra X-Ray Center

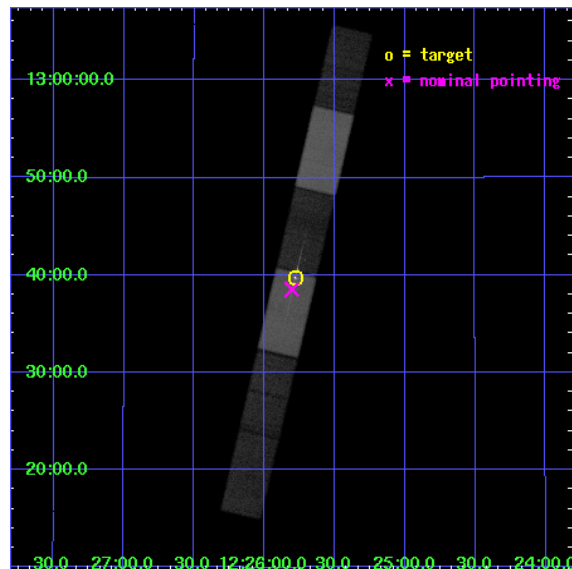
L2 Processing Date : Sep 7 2006

Contents

1	Front	2
2	OBI	3
2.1	OBI	3
2.1.1	Images	3
2.1.2	Bias	3
2.1.3	Parameters	4
2.1.4	Events	4
2.2	Compared Parameters	5
2.3	Aspect	6
2.4	Star Slots	9
2.4.1	Slot 3	9
2.4.2	Slot 4	10
2.4.3	Slot 5	11
2.4.4	Slot 6	12
2.5	FID Slots	13
2.5.1	Slot 0	13
2.5.2	Slot 1	14
2.5.3	Slot 2	15
3	Gratings	16
3.1	LETG Arm	16
A	Summary	18
A.1	Status	18
A.2	Comments	18

1 Front

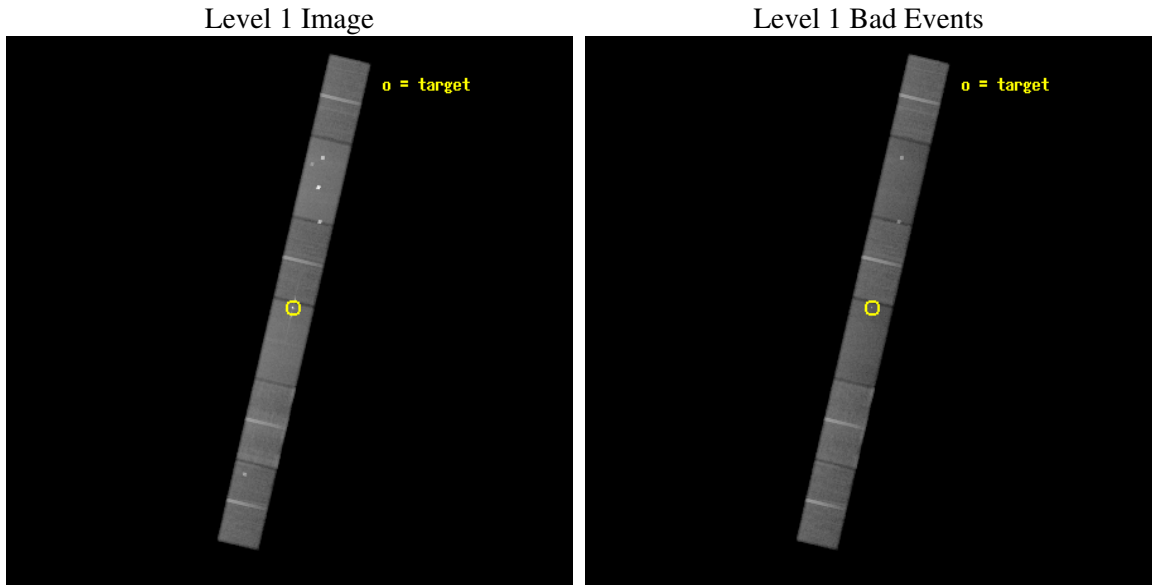
seq_num	700422
obs_id	2983
title	HIGH RESOLUTION SPECTROSCOPY OF AGN IN OUTBURST:THE GASEOUS NUCLEAR ENVIRONMENT AND THE WIGM
observer	Dr. Fabrizio Nicastro
object	SY1 IN OUTBURST
dtcycle	0
cycle	P
ra_targ	186.444583
dec_targ	12.662222
ra_nom	186.45109448531
dec_nom	12.642193484439
roll_nom	103.15898567267
revision	2
ontime	90152.659157887
livetime	88027.570054914
ontime4	90154.400158048
ontime5	90154.400158048
ontime6	90154.400158048
ontime7	90152.659157887
ontime8	90154.400158048
ontime9	90152.659147948
l2events	510561



2 OBI

2.1 OBI

2.1.1 Images

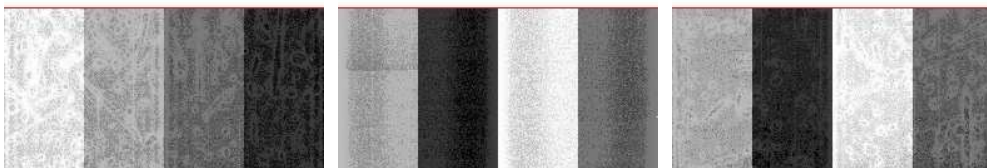


2.1.2 Bias

Chip 4

Chip 5

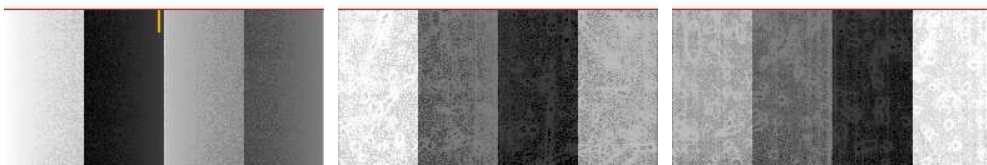
Chip 6



Chip 7

Chip 8

Chip 9



2.1.3 Parameters

obi_num	0
ascdsver	7.6.8.1
caldsver	3.2.3
date	2006-09-07T00:38:27
revision	2

sched_exp_time	90000.000000
ontime	91783.158302277
ontime4	91436.691282526
ontime5	91784.89928253
ontime6	91447.137522534
ontime7	91783.158302277
ontime8	91461.065862432
ontime9	91447.137552425
l1events	2409993

2.1.4 Events

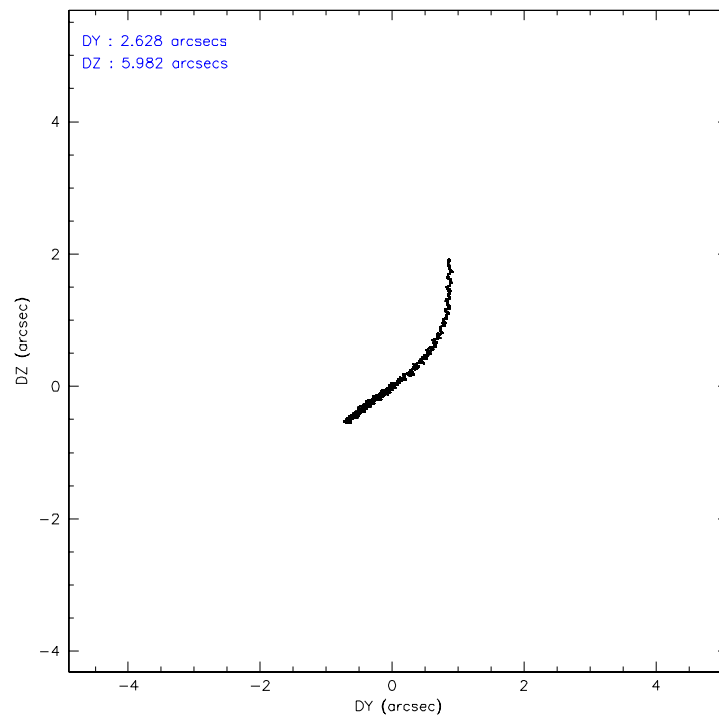
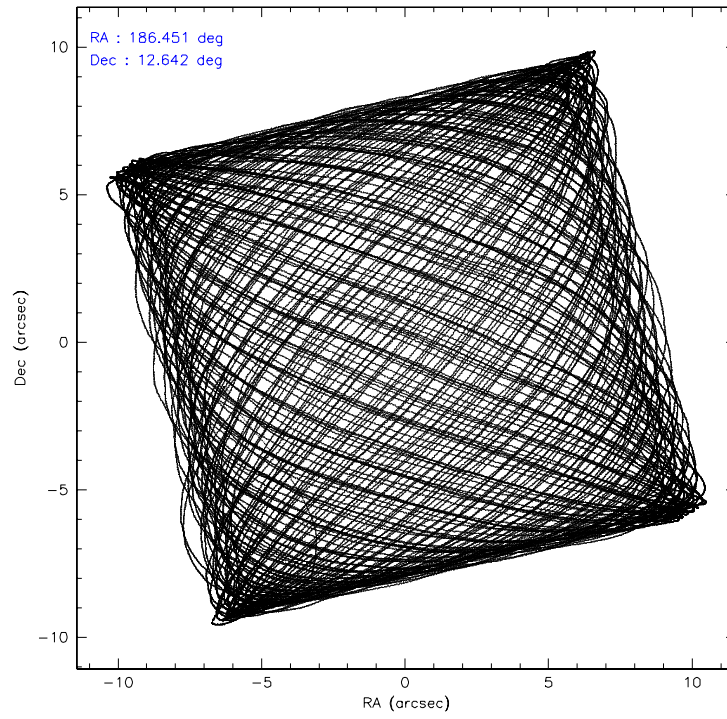
	ccd 4	ccd 5	ccd 6	ccd 7	ccd 8	ccd 9
level 1 events	369743	517557	343028	427127	423831	328707
rejected events	327545	258384	298198	244509	338595	285334
rejected %	88%	49%	86%	57%	79%	86%

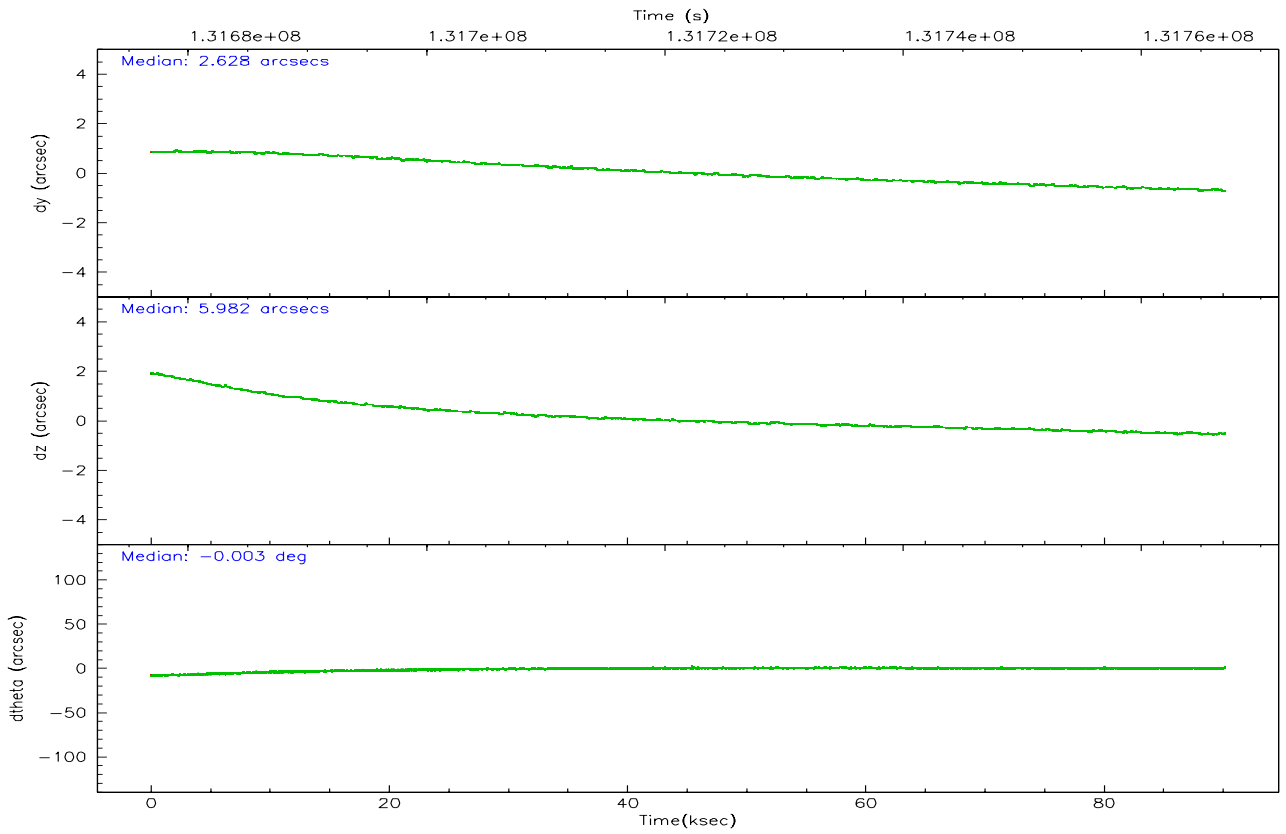
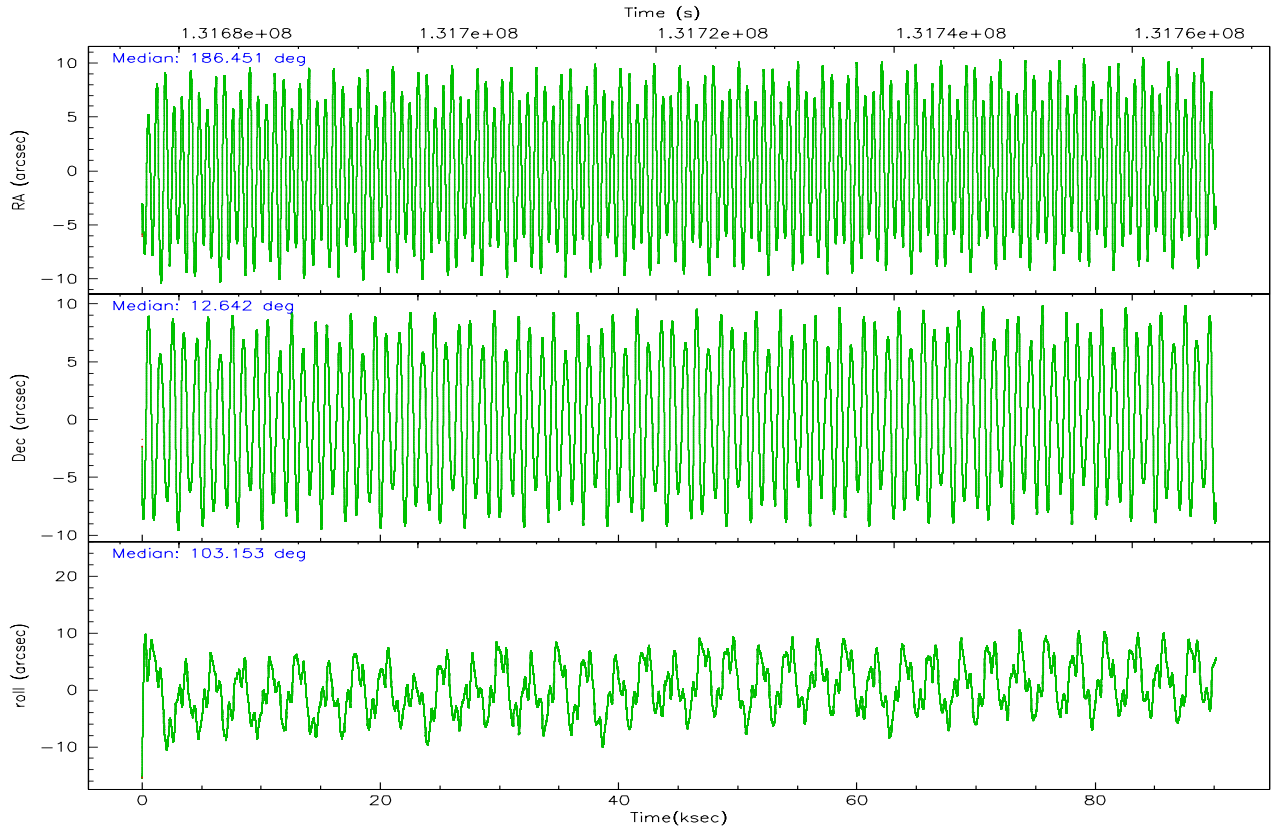
	ccd 4	ccd 5	ccd 6	ccd 7	ccd 8	ccd 9
grade 0 events	17723	65731	19795	15432	26441	19990
	4%	12%	5%	3%	6%	6%
grade 1 events	133	1785	109	307	201	112
	0%	0%	0%	0%	0%	0%
grade 2 events	9331	68740	8203	42987	18090	7517
	2%	13%	2%	10%	4%	2%
grade 3 events	4612	8865	4859	13634	9864	4651
	1%	1%	1%	3%	2%	1%
grade 4 events	4273	7450	4751	13293	9316	4366
	1%	1%	1%	3%	2%	1%
grade 5 events	11216	28300	13014	31395	16705	13137
	3%	5%	3%	7%	3%	3%
grade 6 events	6903	112824	7736	100158	22856	7397
	1%	21%	2%	23%	5%	2%
grade 7 events	315552	223862	284561	209921	320358	271537
	85%	43%	82%	49%	75%	82%

2.2 Compared Parameters

Parameter	Planned	Actual	Parameter	Planned	Actual
Instrument	ACIS	ACIS	Obspar format version number	6	6
Detector	ACIS-456789	ACIS-456789	Obspar file type	PREDICTED	ACTUAL
Grating	LETG	LETG	Obspar update status	NONE	UPDATED
Data mode	FAINT	FAINT	On-chip summing requested	N	N
Observation mode	POINTING	POINTING	Subarray requested	CUSTOM	1/2
Pointing RA	186.470450	186.451094485307	Subarray start row	1	1
Pointing Dec	12.622546	12.64219348443943	Subarray row count	512	512
Pointing Roll	102.998123	103.1589856726738	Alternating exposures requested	N	N
SIM focus pos (mm)	-0.684267	-0.6828225247311905	Primary exposure time	0.000000	1.7
SIM defocus (mm)	0	0.001444936568705701			
SIM translation stage pos (mm)	-183.992523	-183.985022191653			
SIM translation stage offset (mm)	-6.14	-6.147500391354811			
Observation start time	131677031.184000	131675245.98132			
Observation start date	2002-03-05T00:56:07	2002-03-05T00:27:25			
Observation end time	131767031.184000	131768520.9851			
Observation end date	2002-03-06T01:56:07	2002-03-06T02:22:00			
Read mode	TIMED	TIMED			

2.3 Aspect



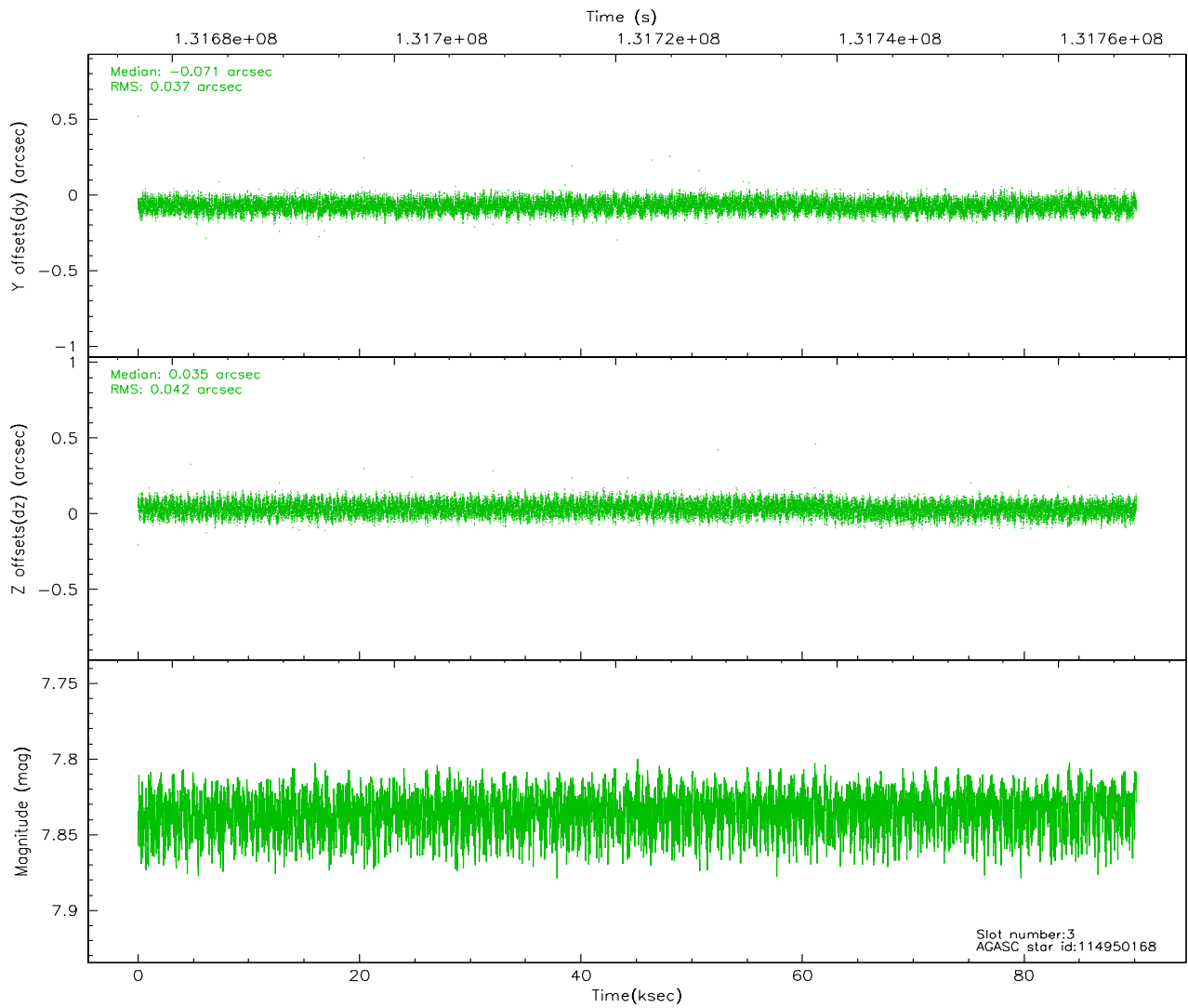
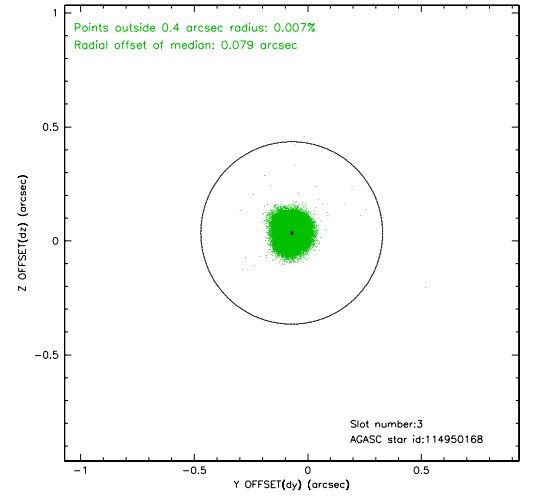
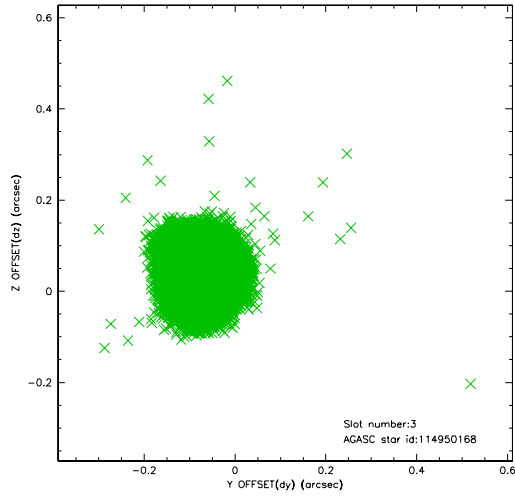


Slot Statistics

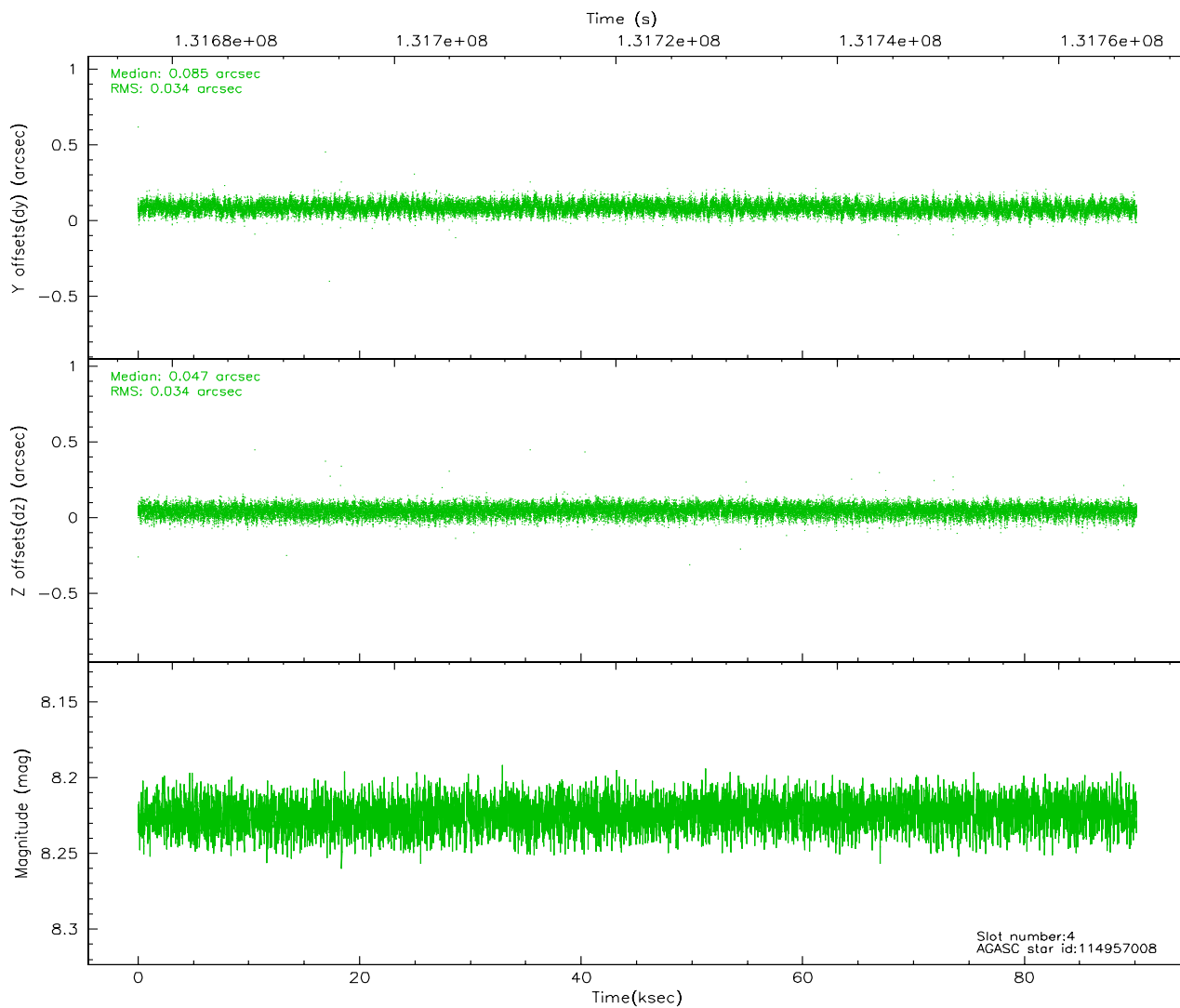
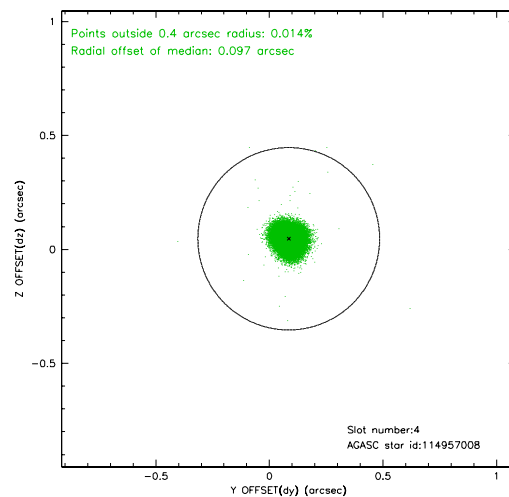
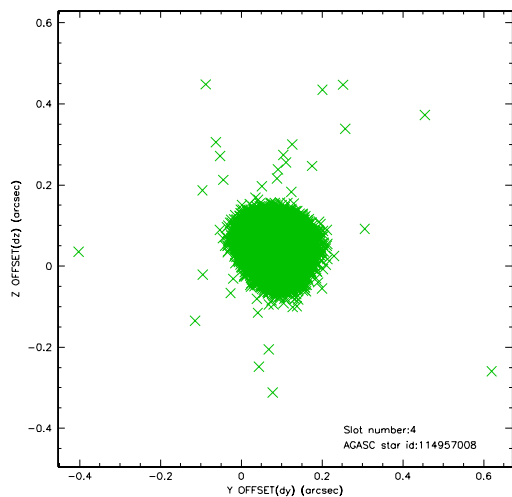
slot	status	id	mag	n_pts	med_dy	med_dz	dr1	dr2	ra	dec	mean_y	mean_z
0	FID	ACIS-S-2	7.08	21987	-0.028	-0.092	0.017	0.054	0.000000	0.000000	-754.94	-1854.10
1	FID	ACIS-S-4	7.19	21984	-0.045	0.035	0.018	0.024	0.000000	0.000000	2158.37	54.55
2	FID	ACIS-S-5	7.23	21983	0.042	0.065	0.015	0.047	0.000000	0.000000	-1807.80	48.19
3	GUIDE	114950168	7.83	43974	-0.071	0.035	0.061	0.094	187.143398	12.117441	-2301.55	-1900.10
4	GUIDE	114957008	8.22	43976	0.085	0.047	0.051	0.082	186.894794	12.099160	-2170.54	-1032.21
5	GUIDE	115214648	9.07	43956	-0.086	-0.082	0.093	0.146	185.771147	12.685188	775.05	2341.51
6	GUIDE	114954440	9.19	43952	0.075	0.005	0.067	0.109	186.915066	12.219118	-1765.55	-1198.42
7	OMITTED		0.00	0	0.000	0.000	0.000	0.000	0.000000	0.000000	0.00	0.00

2.4 Star Slots

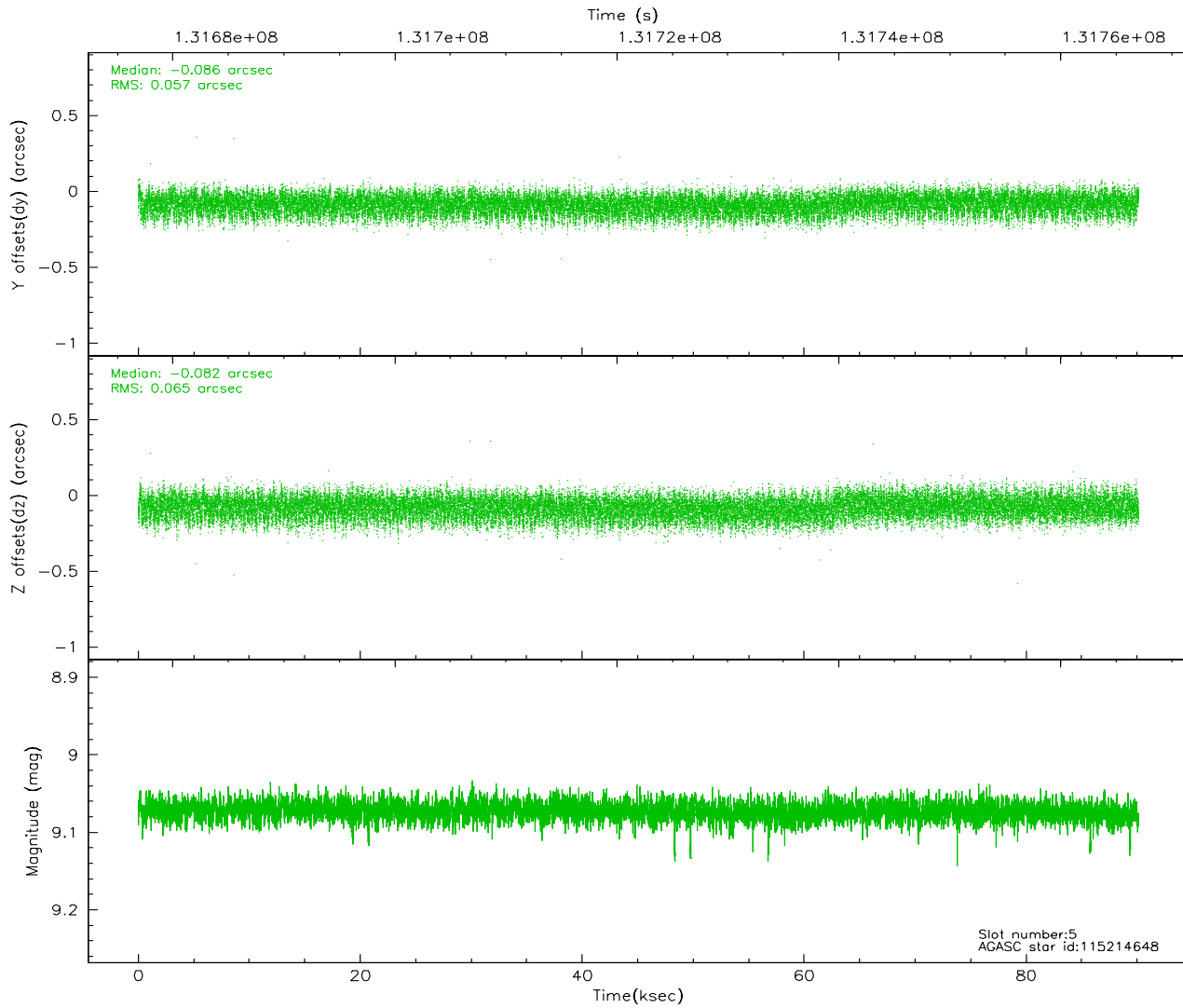
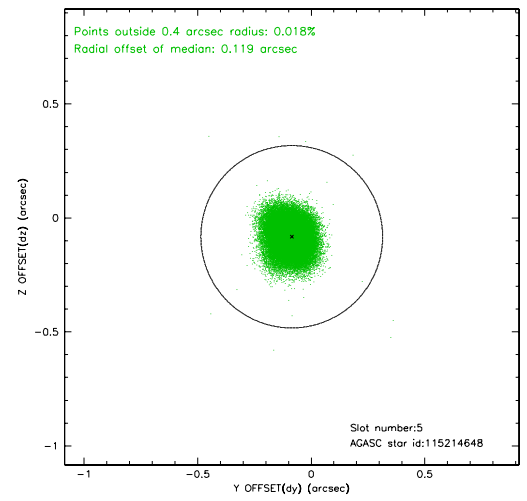
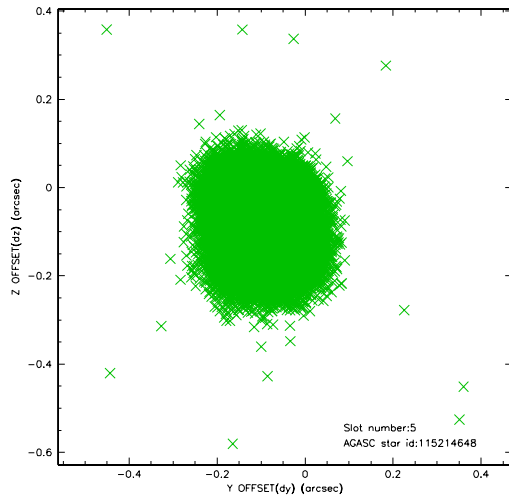
2.4.1 Slot 3



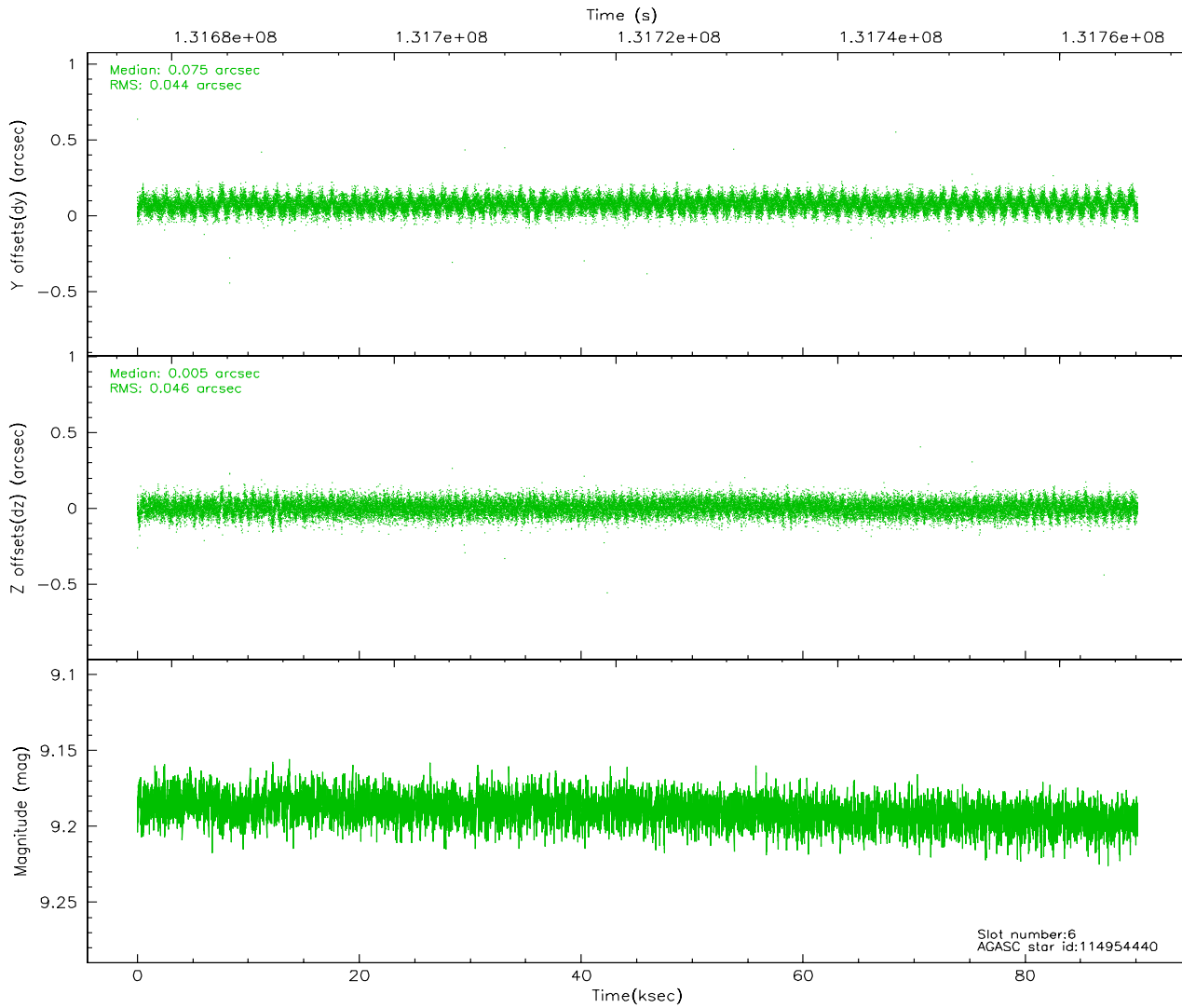
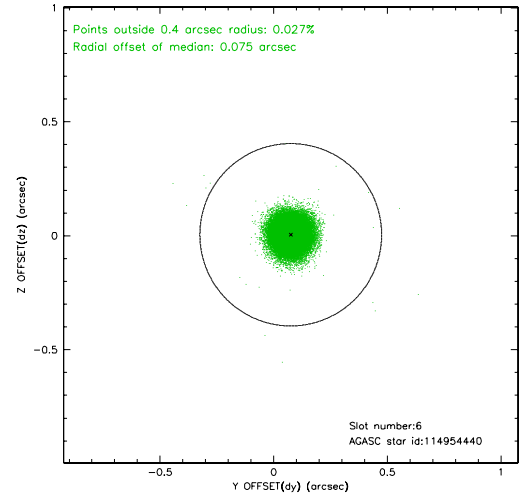
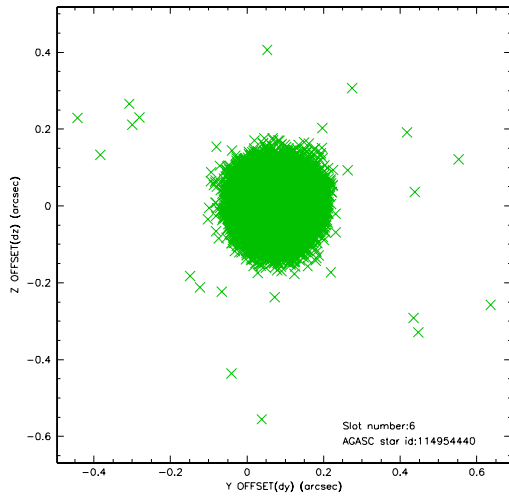
2.4.2 Slot 4



2.4.3 Slot 5

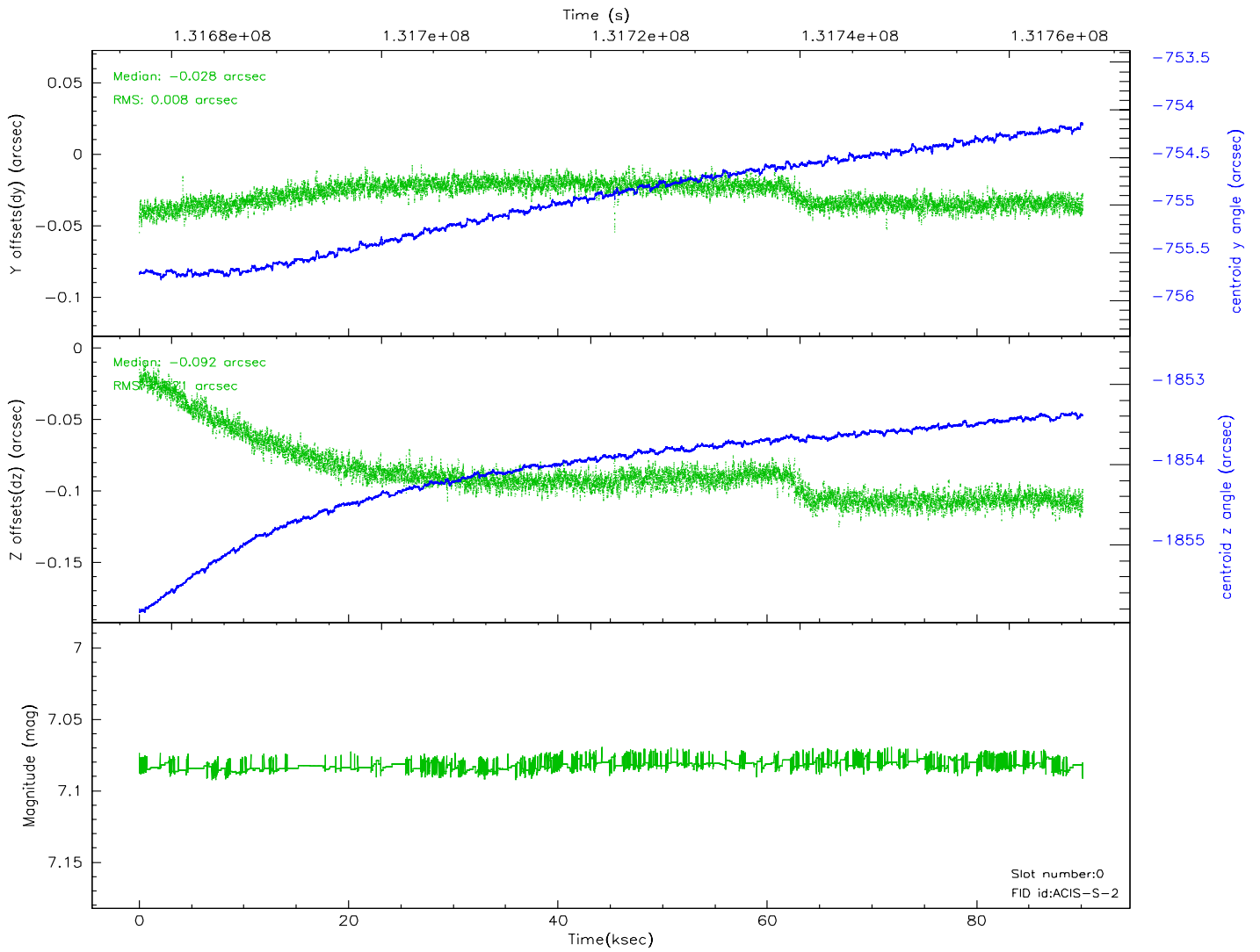
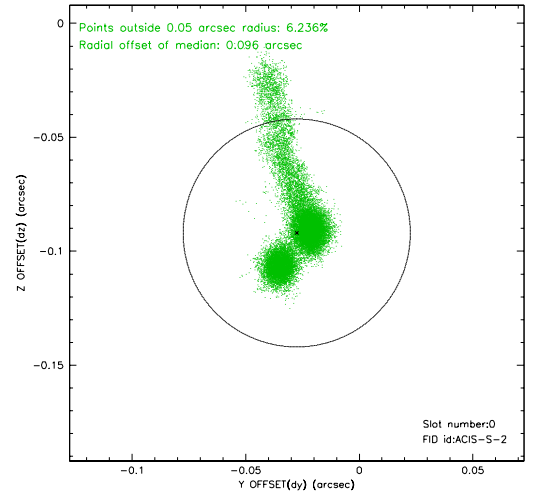
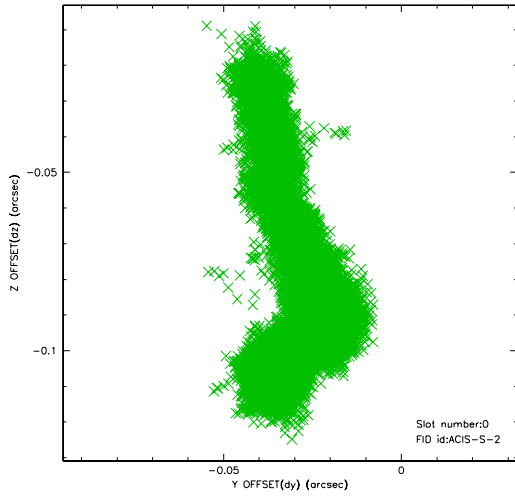


2.4.4 Slot 6

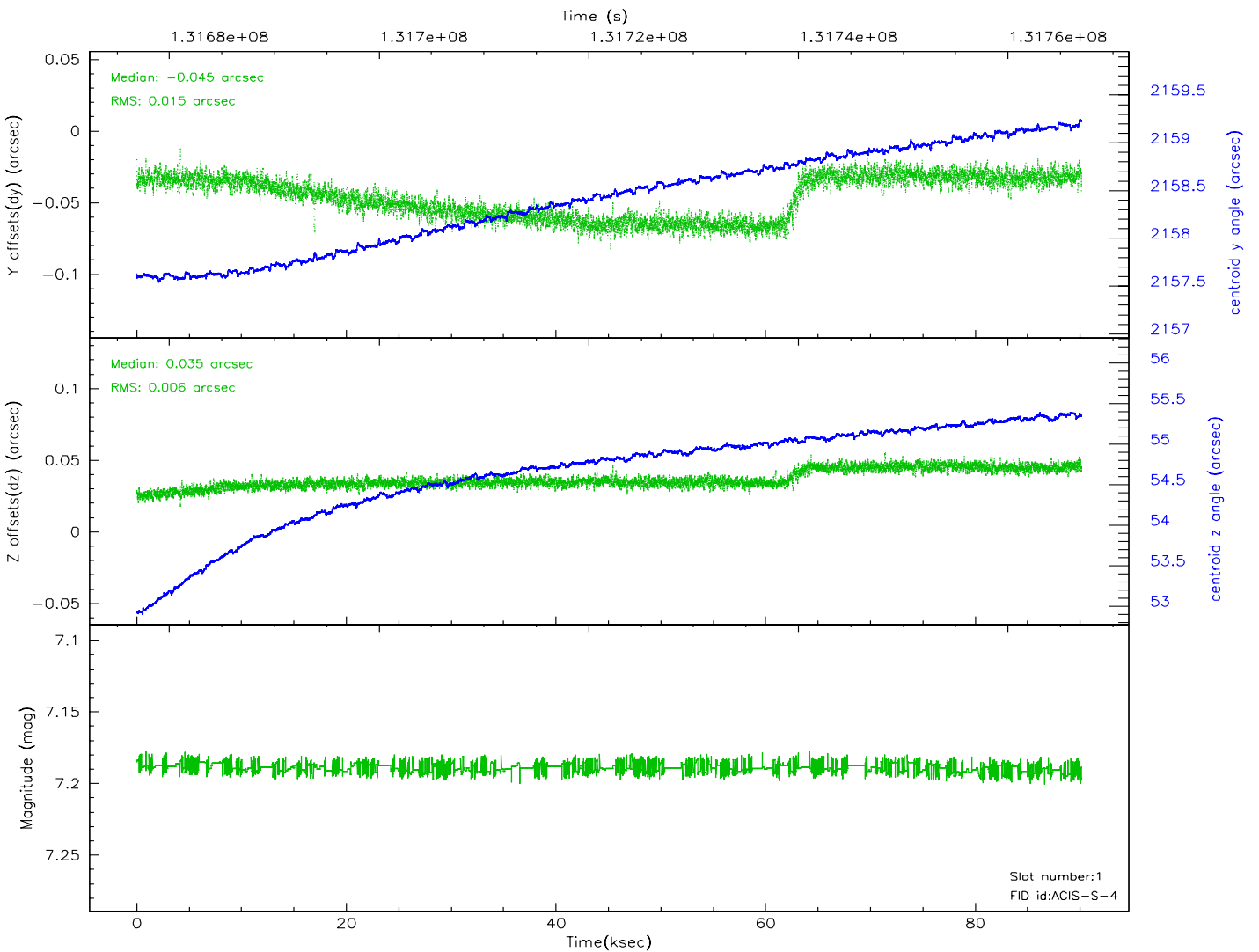
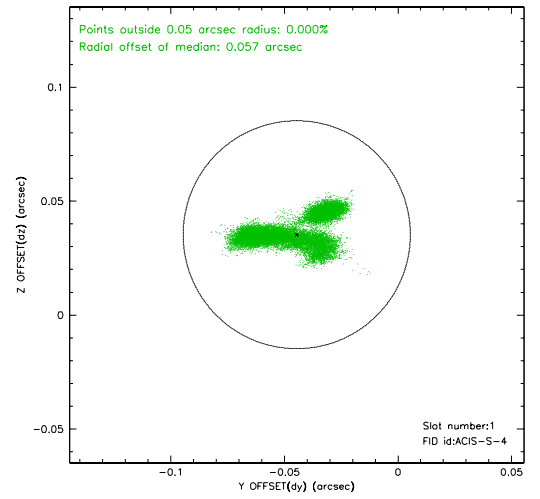
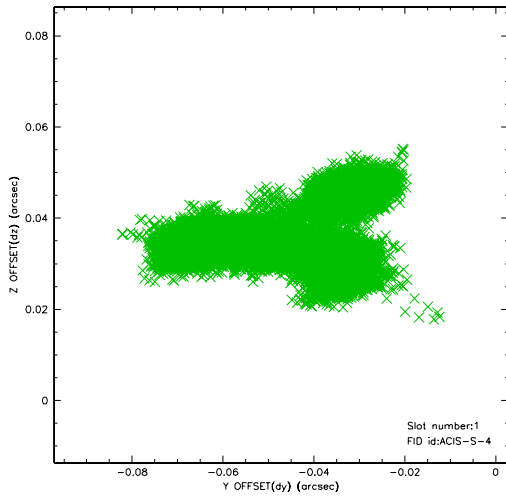


2.5 FID Slots

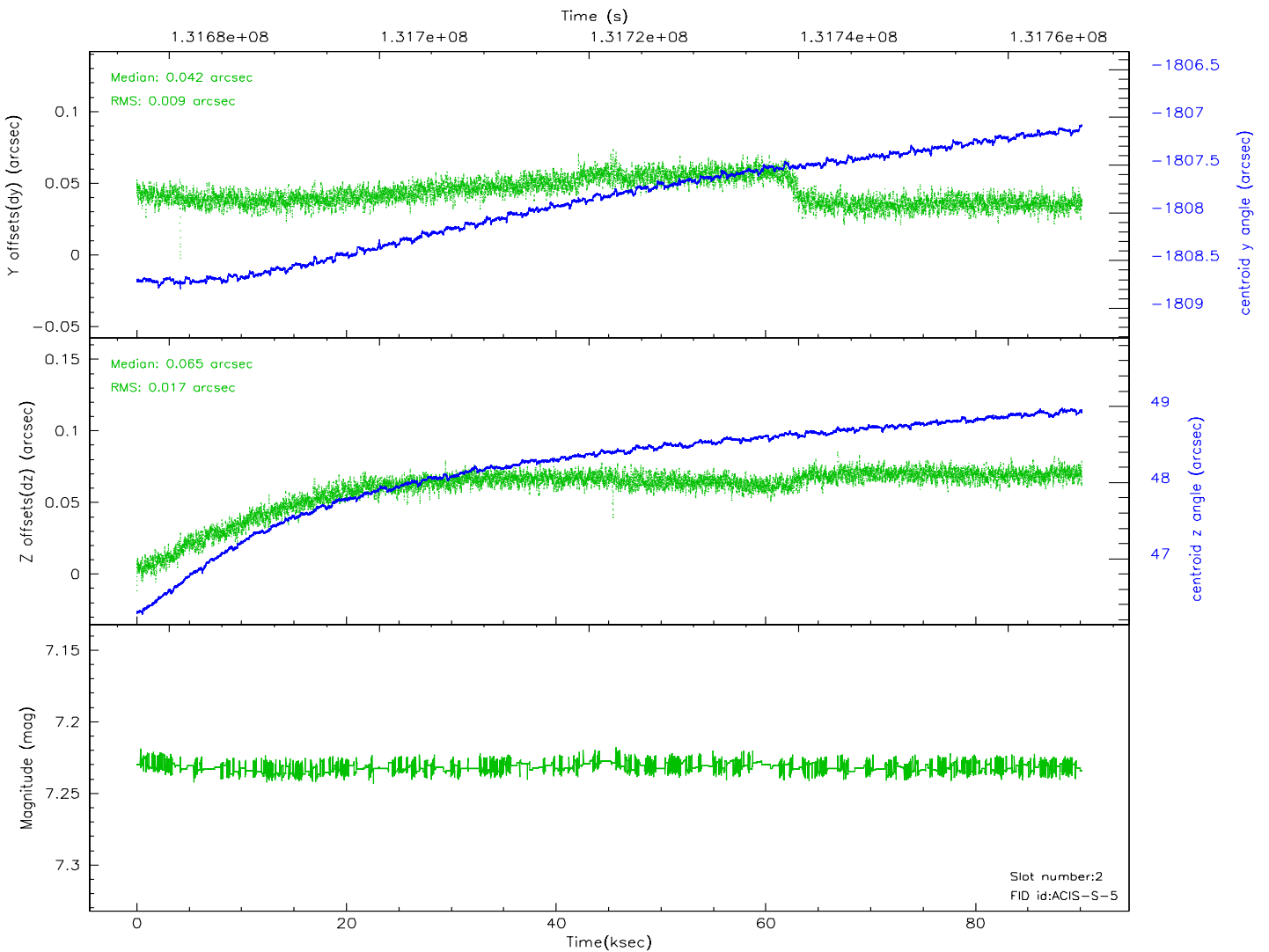
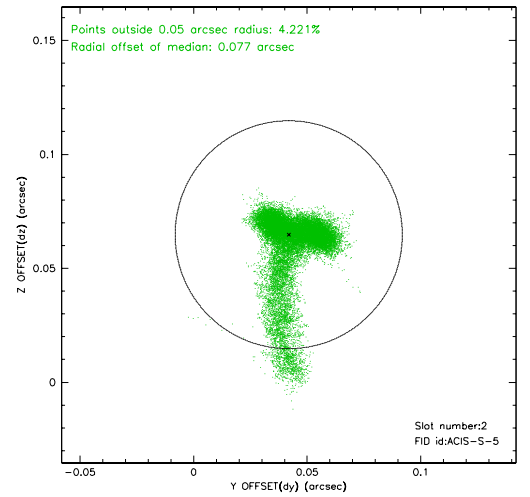
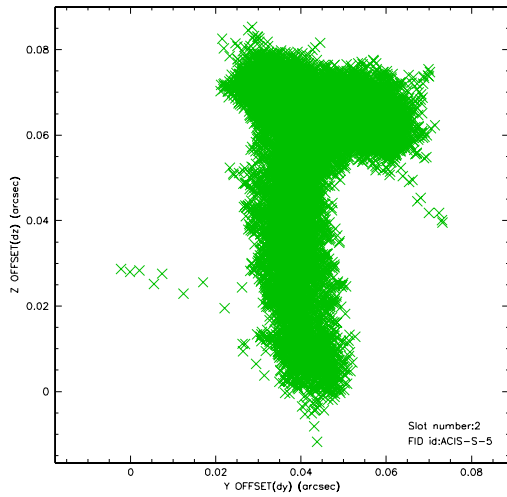
2.5.1 Slot 0



2.5.2 Slot 1



2.5.3 Slot 2

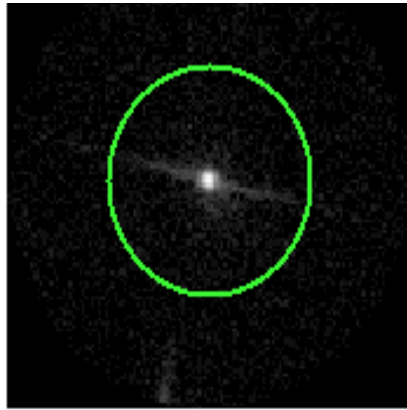


3 Gratings

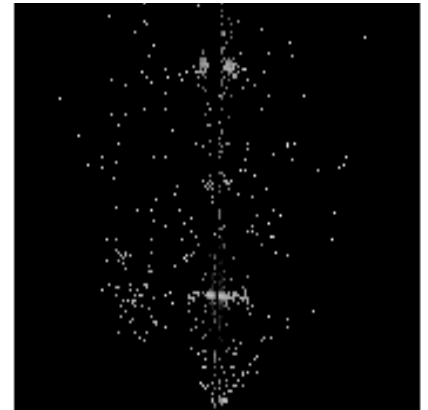
3.1 LETG Arm



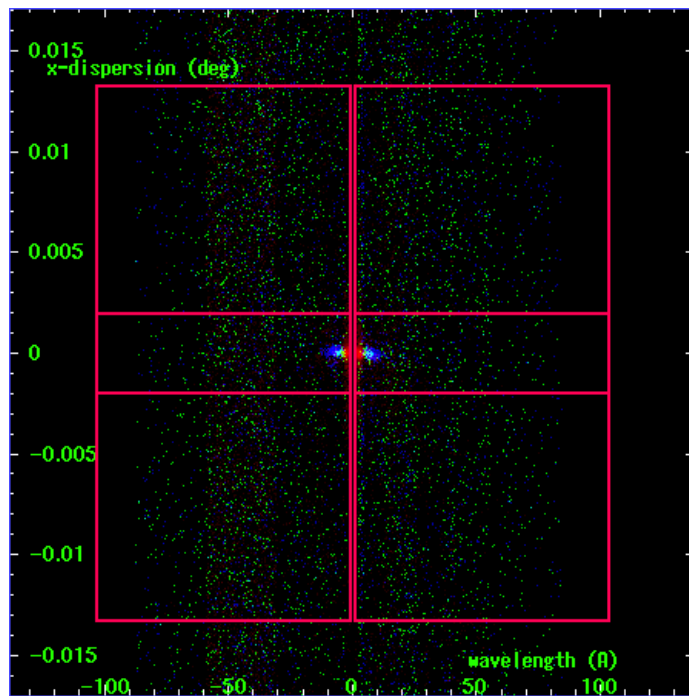
LETG Order Sort 123



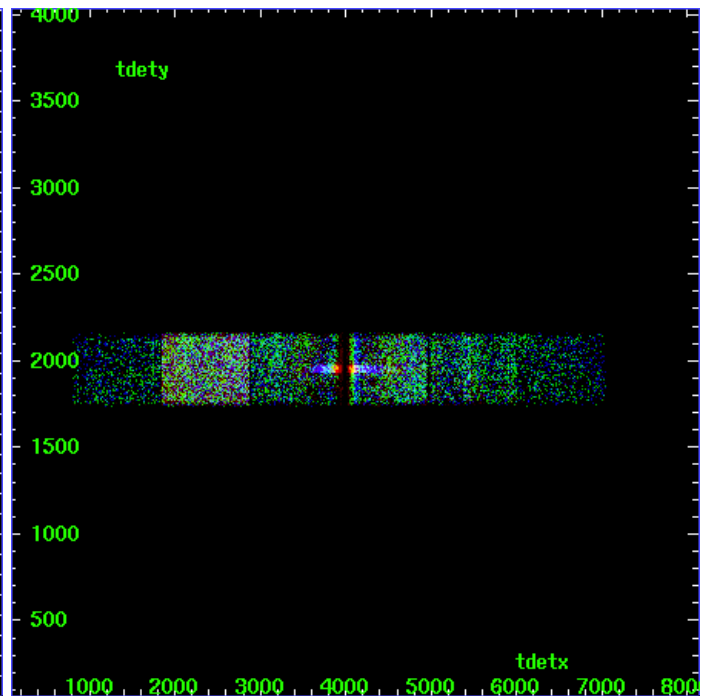
LETG Zero Order



LETG Order Sort ALL

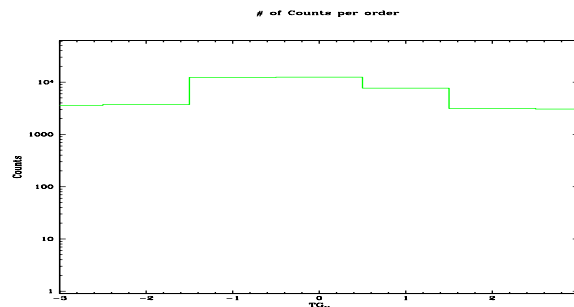


Spot Image LETG

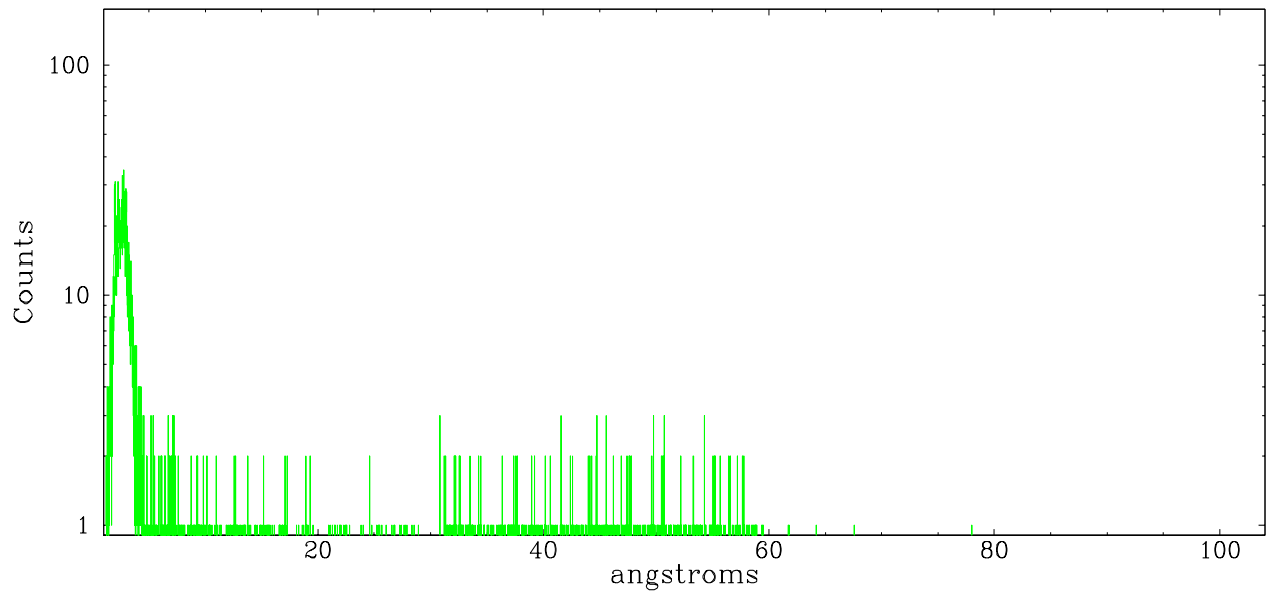


Full Detector LETG

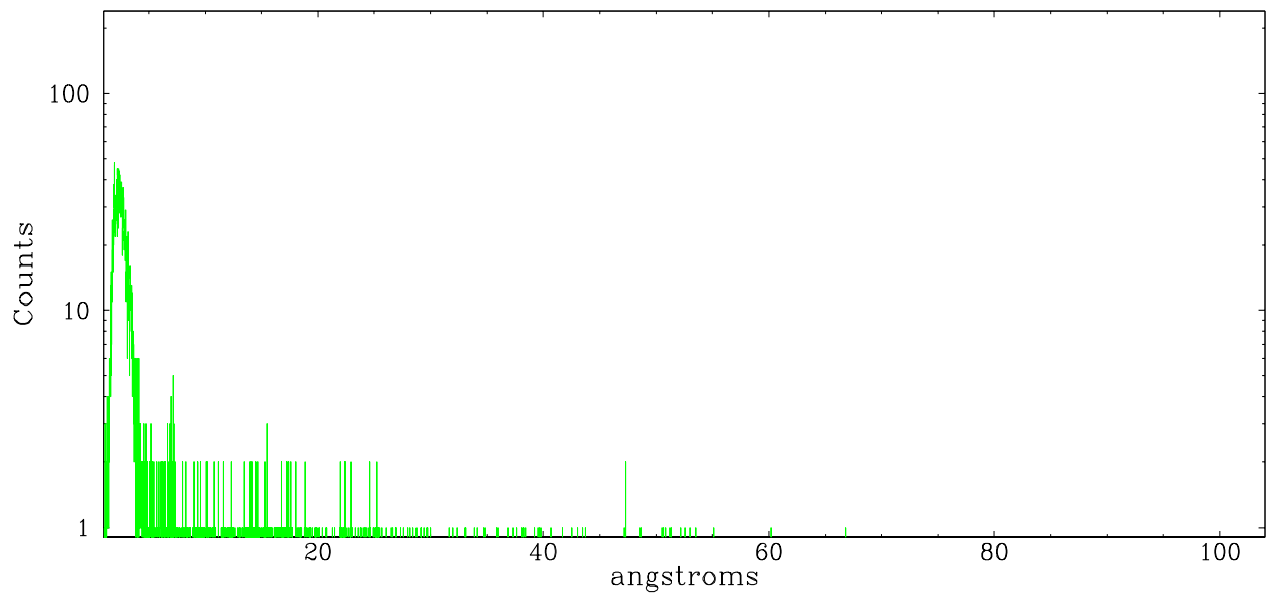
	order	order	order	order	order	order	order
	-3	-2	-1	0	1	2	3
Events	3586	3727	12355	12419	7680	3123	3047



leg order -1



leg order +1



A Summary

A.1 Status

V&V Scientist	Jen Lauer
V&V Date (YYYY-MM-DD)	2010.10.01
V&V Edition	2
V&V Disposition and Status	OK
V&V Charge Time	90.152

A.2 Comments

The guide star in slot 7 was manually excluded from the processing due to poor data quality.