

V&V Reference Report

L2 ASCDS Version : 8.1.1

Observation 303 - L2 Version 3
Chandra X-Ray Center

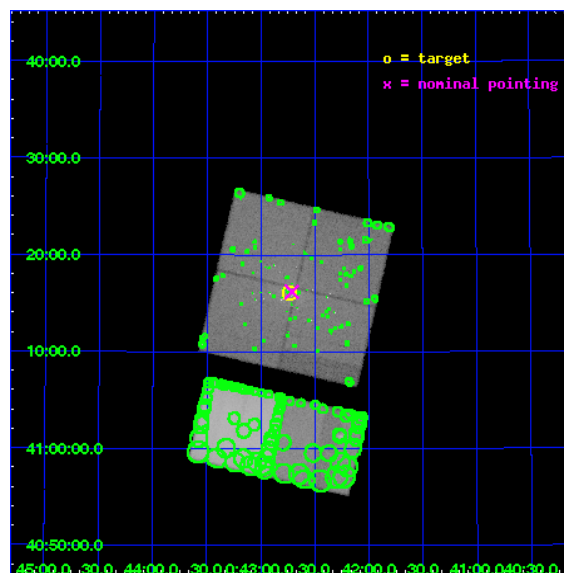
L2 Processing Date : Nov 19 2009

Contents

1	Front	2
2	OBI	3
2.1	OBI	3
2.1.1	Images	3
2.1.2	Bias	3
2.1.3	Parameters	4
2.1.4	Events	4
2.2	Compared Parameters	5
2.3	Aspect	6
2.4	Star Slots	9
2.4.1	Slot 3	9
2.4.2	Slot 4	10
2.4.3	Slot 5	11
2.4.4	Slot 6	12
2.4.5	Slot 7	13
2.5	FID Slots	14
2.5.1	Slot 0	14
2.5.2	Slot 1	15
2.5.3	Slot 2	16
3	Point Sources	17
A	Summary	18
A.1	Status	18
A.2	Comments	18

1 Front

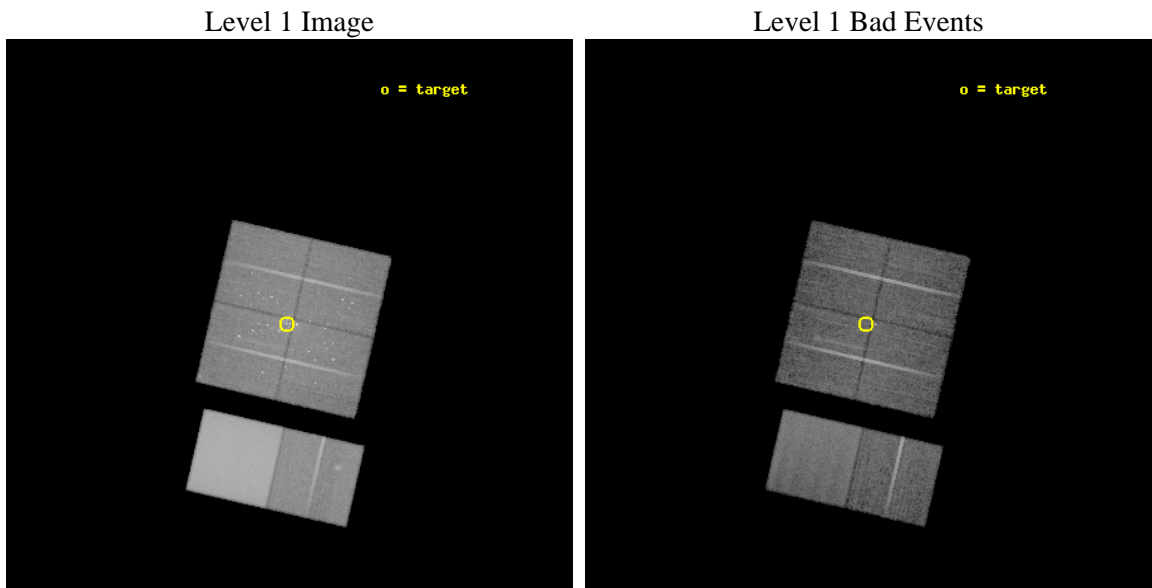
seq_num	600063	Sequence number
obs_id	303	Observation id
title	M31 MONITORING (FOLLOWUP)	Proposal title
observer	Dr Steve Murray	Principal investigator
object	M31 TRANSIENT TBD	Source name
dtcycle	0	
cycle	P	events from which exps? Prim/Second/Both
ra_targ	10.685	Observer's specified target RA
dec_targ	41.268972	Observer's specified target Dec
ra_nom	10.678061724346	Nominal RA
dec_nom	41.269891899884	Nominal Dec
roll_nom	192.96933472999	Nominal Roll
revision	3	Processing version of data
ontime	11988.470194504	Sum of GTIs [s]
livetime	11836.664966311	Livetime [s]
ontime0	12017.639085889	Sum of GTIs [s]
ontime1	12095.42281922	Sum of GTIs [s]
ontime2	11913.927052289	Sum of GTIs [s]
ontime3	11988.470194504	Sum of GTIs [s]
ontime6	12098.663640052	Sum of GTIs [s]
ontime7	11447.219535261	Sum of GTIs [s]
l2events	879139	Number of level 2 events



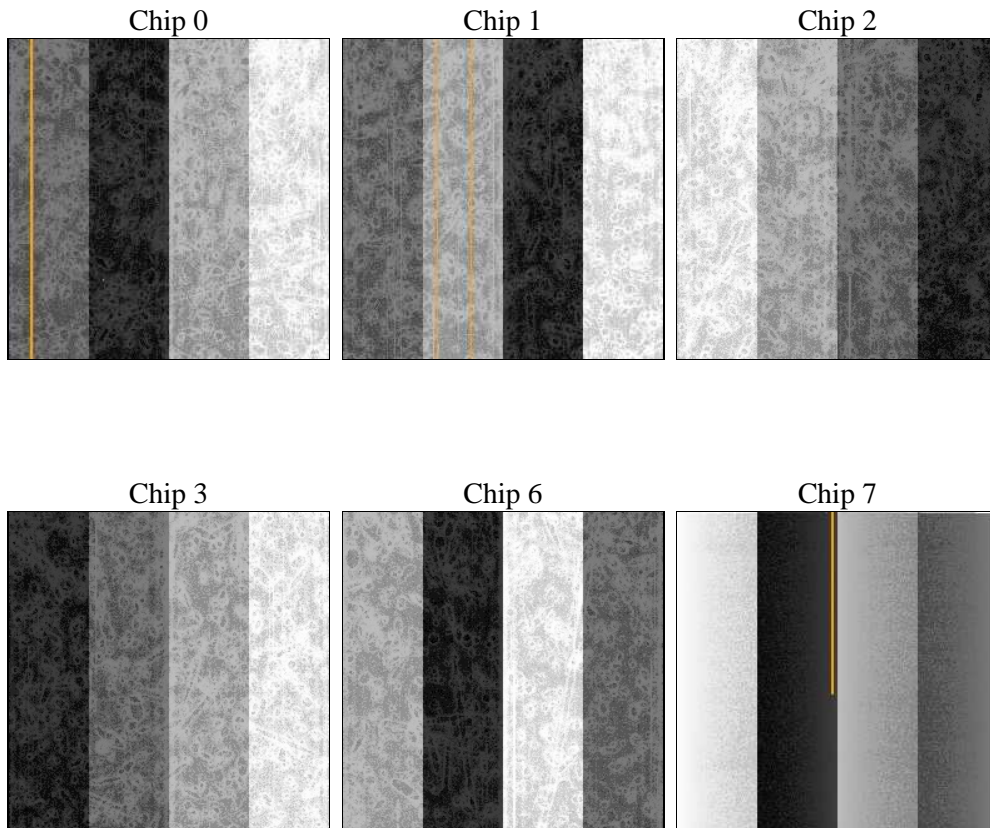
2 OBI

2.1 OBI

2.1.1 Images



2.1.2 Bias



2.1.3 Parameters

obi_num	1	Obi number	sched_exp_time	10000.000000	Scheduled observation exposure time
ascdsver	8.1.1	ASCDS version number	ontime	11988.470194504	Sum of GTIs [s]
caldbver	4.1.4	 	ontime0	12017.639085889	Sum of GTIs [s]
date	2009-11-19T18:31:02	Date and time of file creation	ontime1	12095.42281922	Sum of GTIs [s]
revision	3	Processing version of data	ontime2	11913.927052289	Sum of GTIs [s]
			ontime3	11988.470194504	Sum of GTIs [s]
			ontime6	12098.663640052	Sum of GTIs [s]
			ontime7	11447.219535261	Sum of GTIs [s]
			l1events	1540127	Number of level 1 events

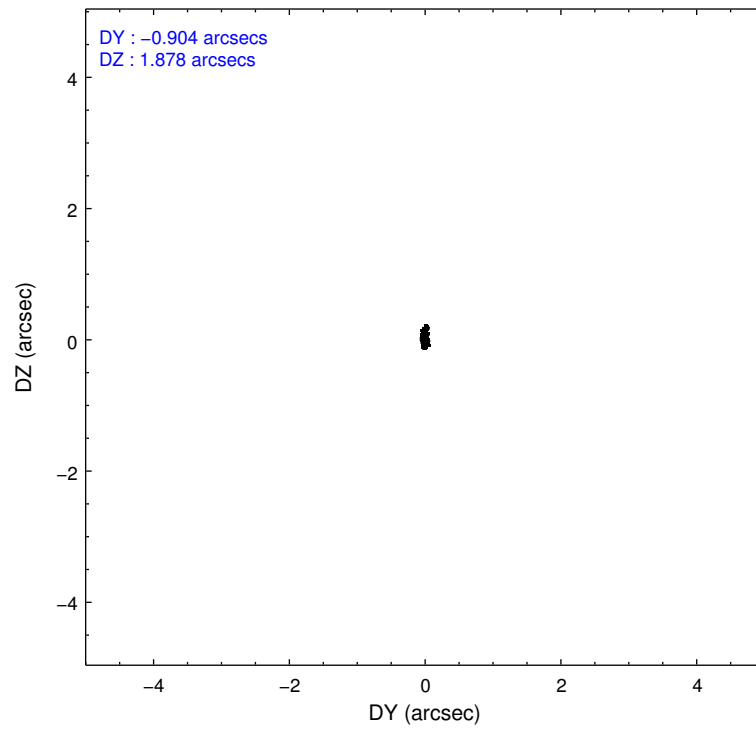
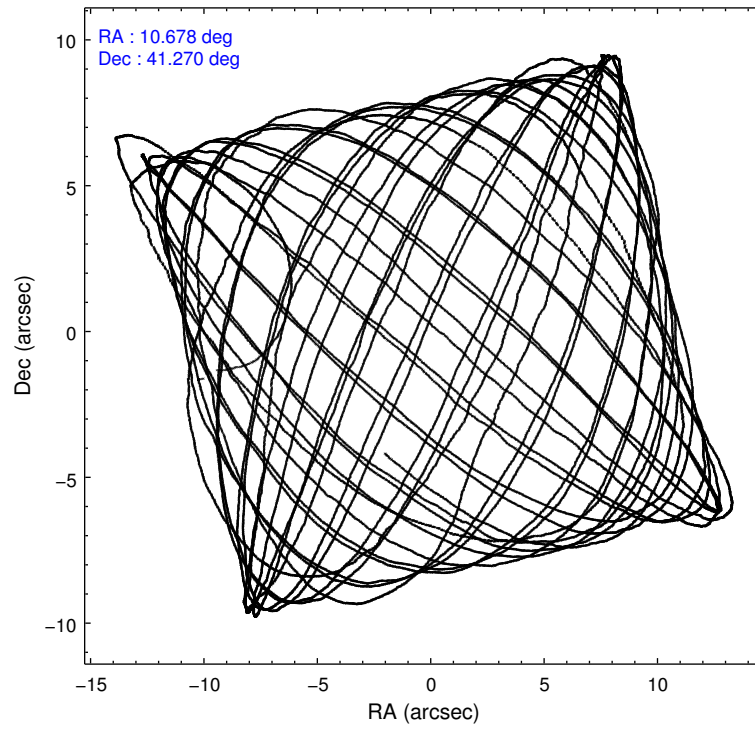
2.1.4 Events

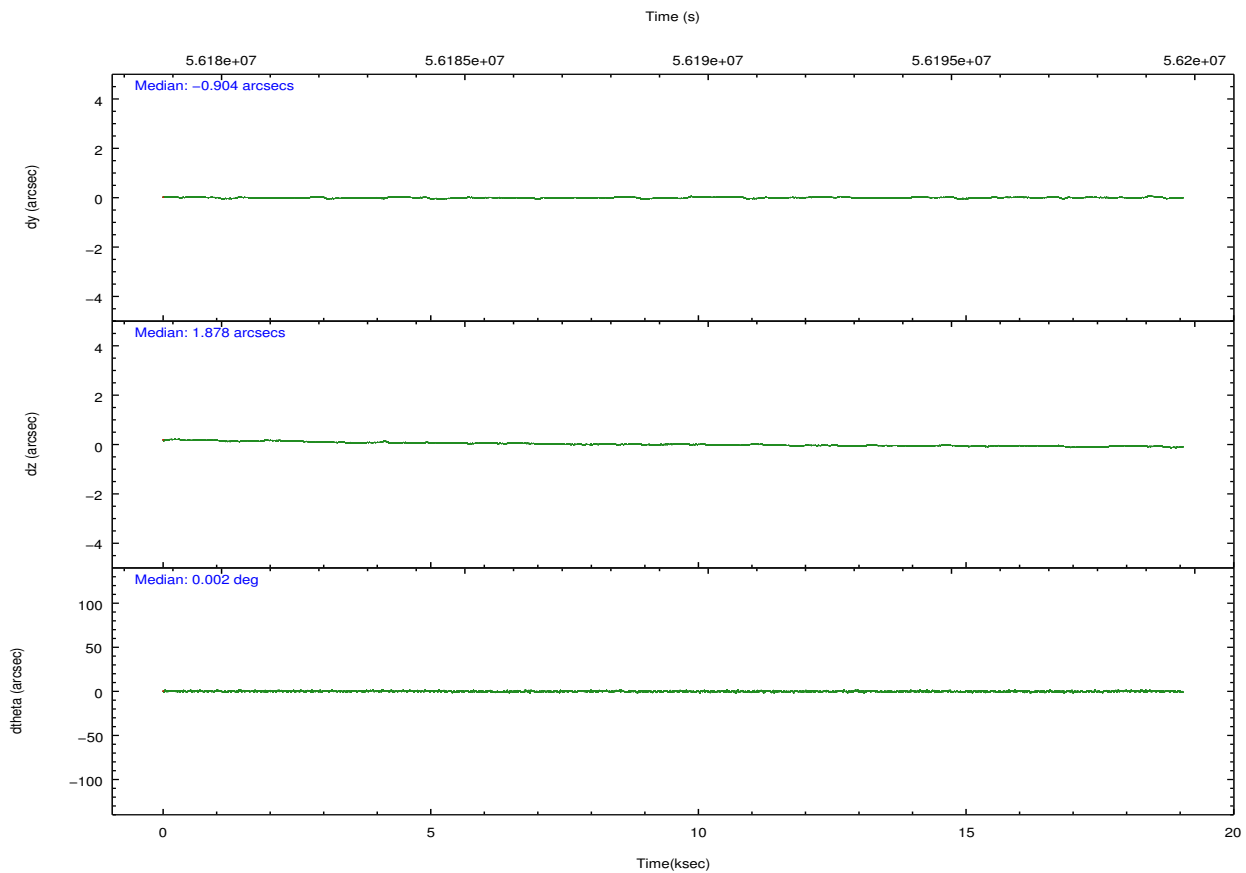
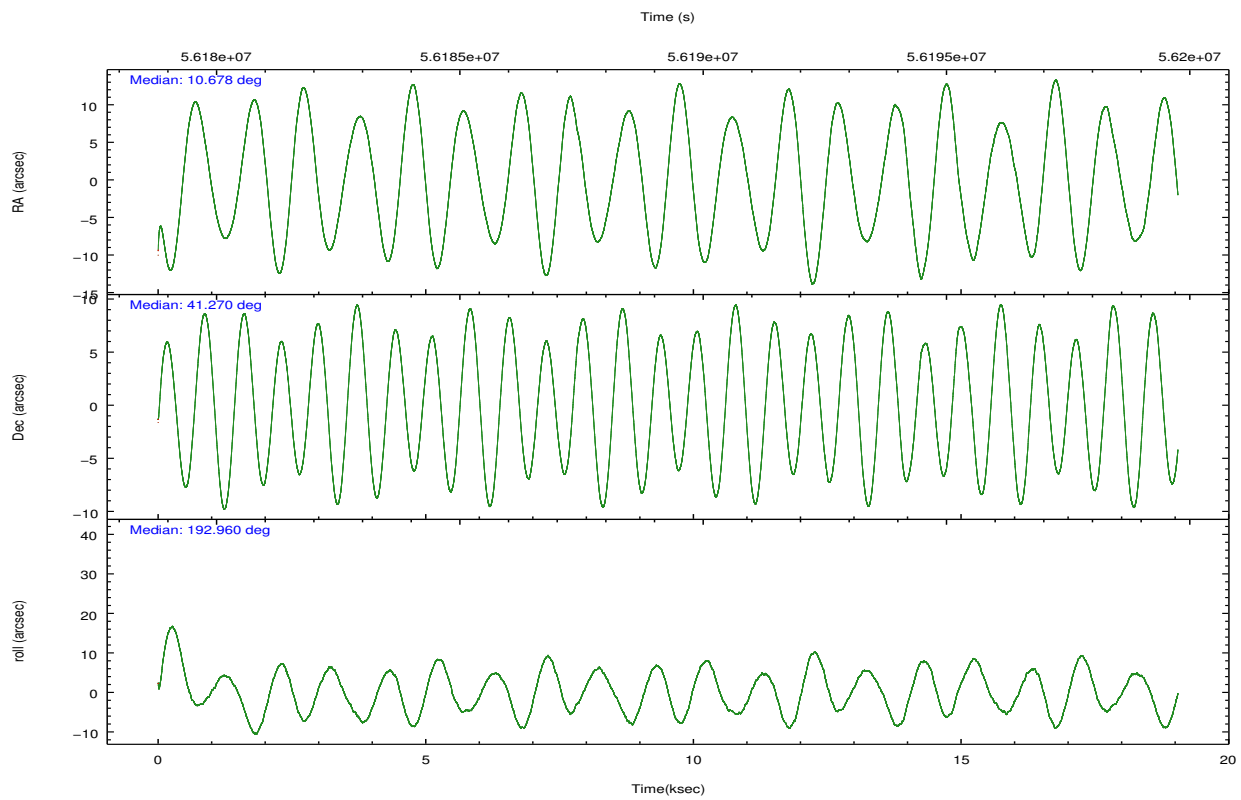
	ccd 0	ccd 1	ccd 2	ccd 3	ccd 6	ccd 7		ccd 0	ccd 1	ccd 2	ccd 3	ccd 6	ccd 7
level 1 events	167770	173423	181366	189025	220053	608490	grade 0 events	29068	32254	28732	33182	38493	42712
rejected events	97568	93447	105316	104263	103922	142544		17%	18%	15%	17%	17%	7%
rejected %	58%	53%	58%	55%	47%	23%	grade 1 events	134	152	213	195	133	184
								0%	0%	0%	0%	0%	0%
							grade 2 events	34709	40362	40350	44503	70129	81522
								20%	23%	22%	23%	31%	13%
							grade 3 events	1245	1446	1168	1268	1172	27959
								0%	0%	0%	0%	0%	4%
							grade 4 events	1162	1391	1173	1204	1084	26323
								0%	0%	0%	0%	0%	4%
							grade 5 events	2515	2487	2417	2431	2565	10820
								1%	1%	1%	1%	1%	1%
							grade 6 events	4109	4627	4705	4698	5441	288284
								2%	2%	2%	2%	2%	47%
							grade 7 events	94828	90704	102608	101544	101036	130686
								56%	52%	56%	53%	45%	21%

2.2 Compared Parameters

Parameter	Planned	Actual	Parameter	Planned	Actual
Instrument	ACIS	ACIS	Obspar format version number	6	6
Detector	ACIS-012367	ACIS-012367	Obspar file type	PREDICTED	ACTUAL
Grating	NONE	NONE	Obspar update status	NONE	UPDATED
Data mode	FAINT	FAINT	Number of optional ACIS chips dropped	0	0
Observation mode	POINTING	POINTING	On-chip summing requested	N	N
Pointing RA	10.705483	10.67806172434553	Subarray requested	NONE	NONE
Pointing Dec	41.288517	41.26989189988406	Alternating exposures requested	N	N
Pointing Roll	192.742557	192.9693347299903	Primary exposure time	0.000000	3.2
Window start time	55468864.184000	55468864.184000			
Window stop time	55814464.184000	55814464.184000			
SIM focus pos (mm)	-0.782348	-0.7809083437167272			
SIM defocus (mm)	0	0.001439871863259334			
SIM translation stage pos (mm)	-233.592463	-233.5874344608287			
SIM translation stage offset (mm)	0	-0.005018542100998502			
Observation start time	56180245.184000	56179007.448782			
Observation start date	1999-10-13T05:36:21	1999-10-13T05:16:47			
Observation end time	56195245.184000	56199118.974506			
Observation end date	1999-10-13T09:46:21	1999-10-13T10:51:58			
Read mode	TIMED	TIMED			

2.3 Aspect



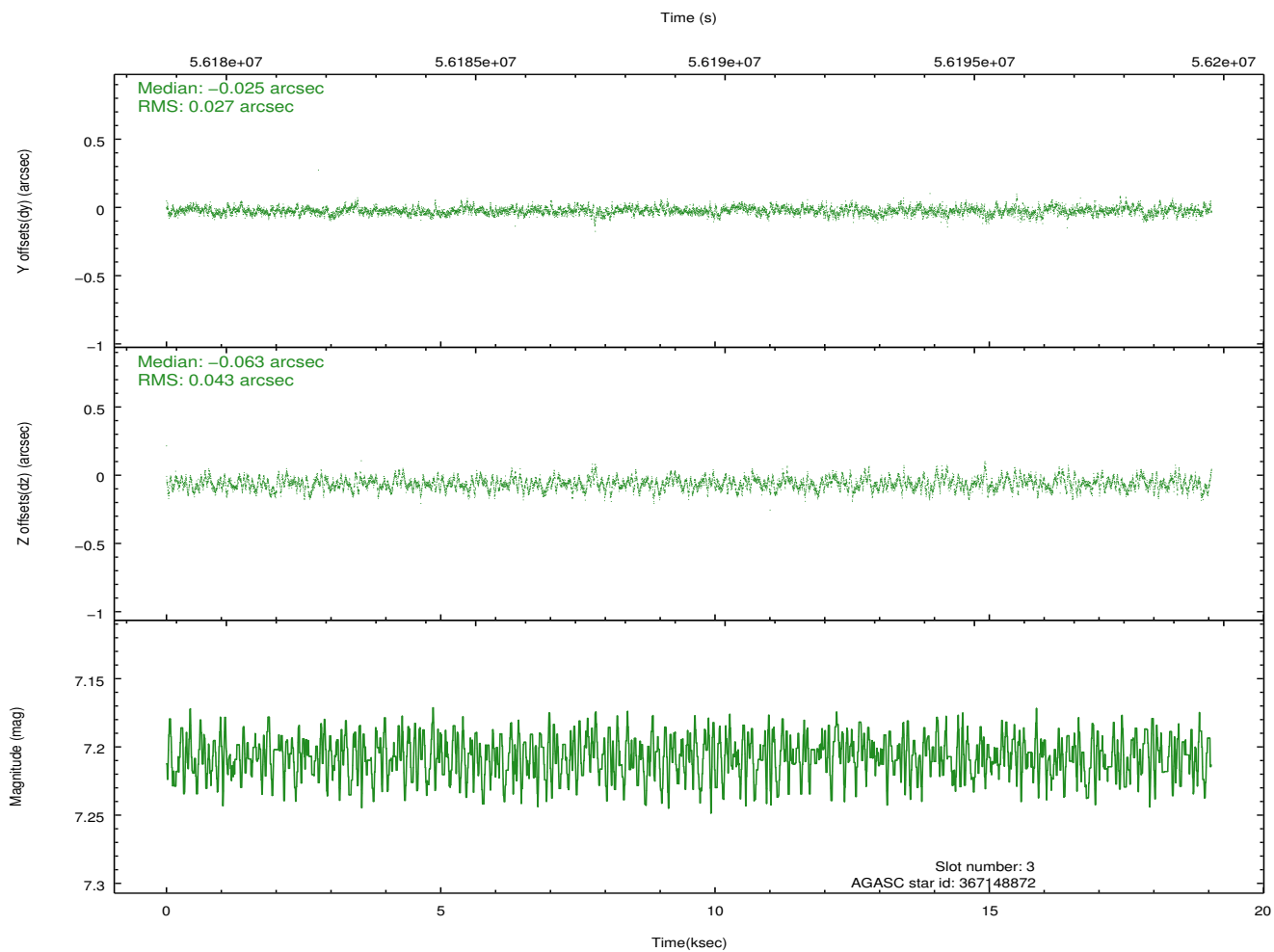
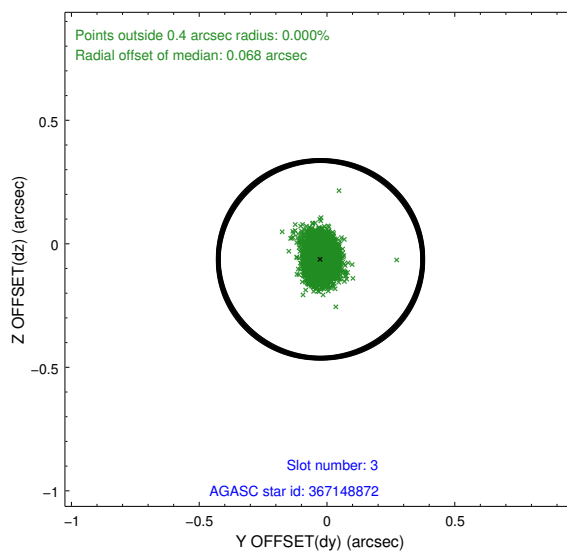
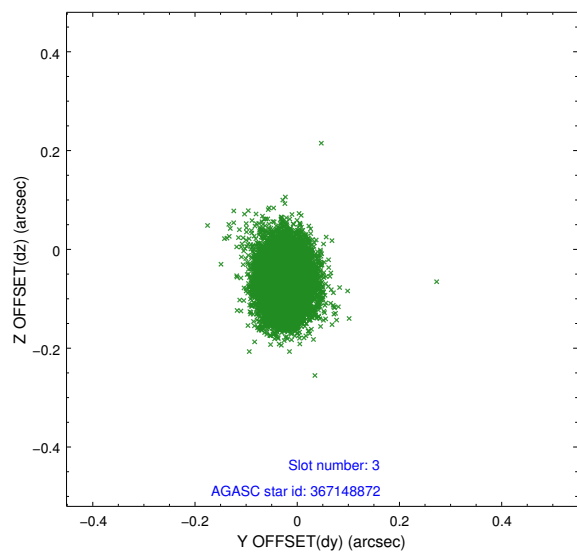


Slot Statistics

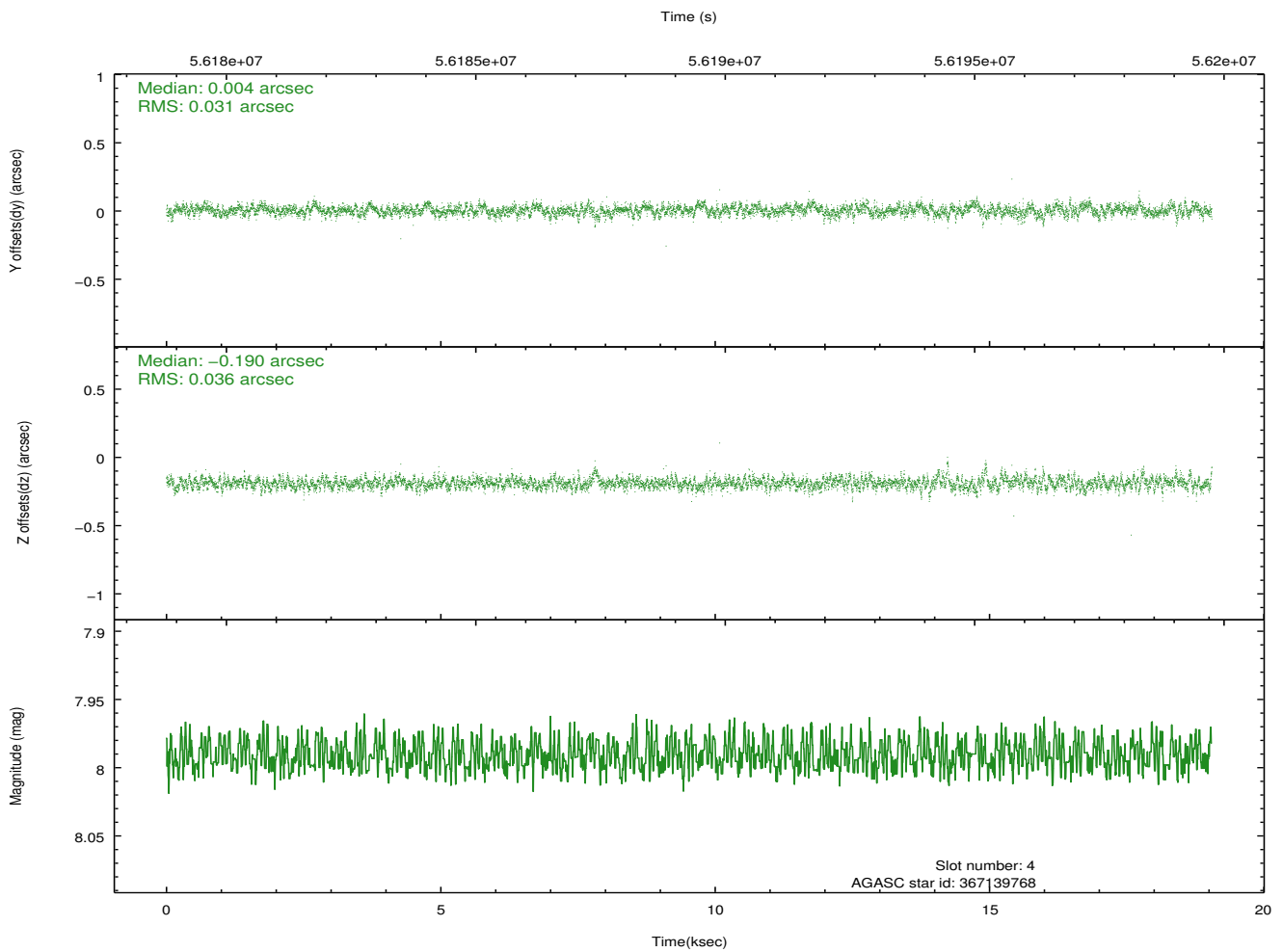
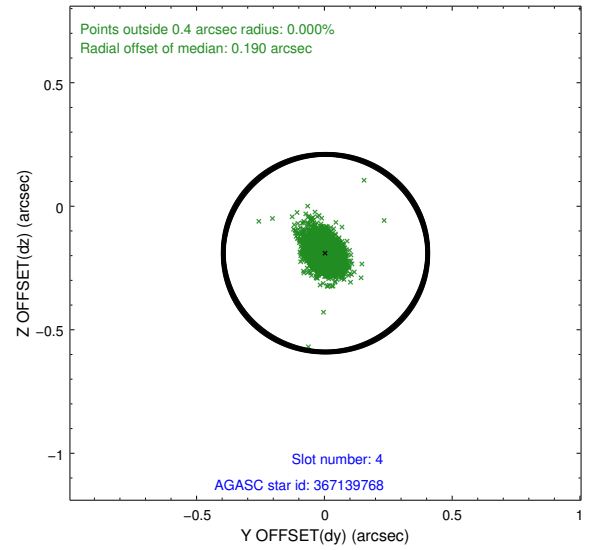
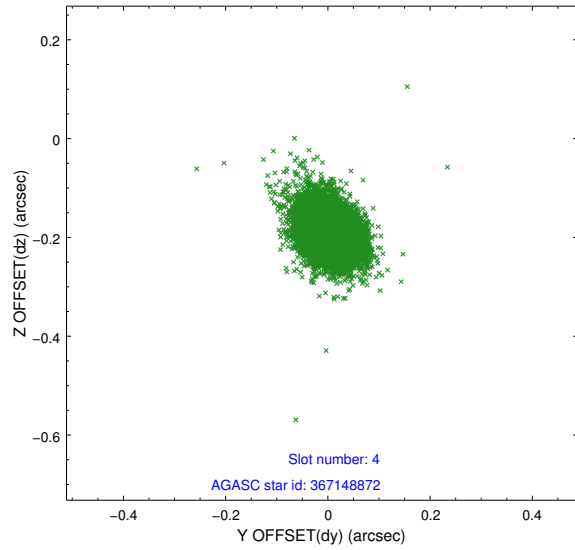
slot	status	id	mag	n_pts	med_dy	med_dz	dr1	dr2	ra	dec	mean_y	mean_z
0	FID	ACIS-I-2	7.20	9294	-0.046	0.050	0.009	0.015	0.000000	0.000000	-753.47	-831.41
1	FID	ACIS-I-4	7.23	9293	0.102	0.020	0.006	0.011	0.000000	0.000000	2160.86	1074.52
2	FID	ACIS-I-5	7.23	9292	-0.157	-0.002	0.009	0.014	0.000000	0.000000	-1807.24	1072.65
3	GUIDE	367148872	7.21	9294	-0.025	-0.063	0.053	0.090	10.505940	40.688258	1007.25	1987.79
4	GUIDE	367139768	7.99	9294	0.004	-0.190	0.049	0.082	11.069715	40.685175	-491.73	2336.50
5	GUIDE	367671800	9.41	9286	-0.071	0.194	0.098	0.152	10.554735	41.964935	-143.53	-2463.33
6	GUIDE	367657896	9.01	9285	0.072	-0.026	0.063	0.107	11.197765	41.313576	-1319.27	202.15
7	GUIDE	367665472	9.48	9289	0.015	0.084	0.088	0.143	10.241611	41.730843	863.57	-1830.32

2.4 Star Slots

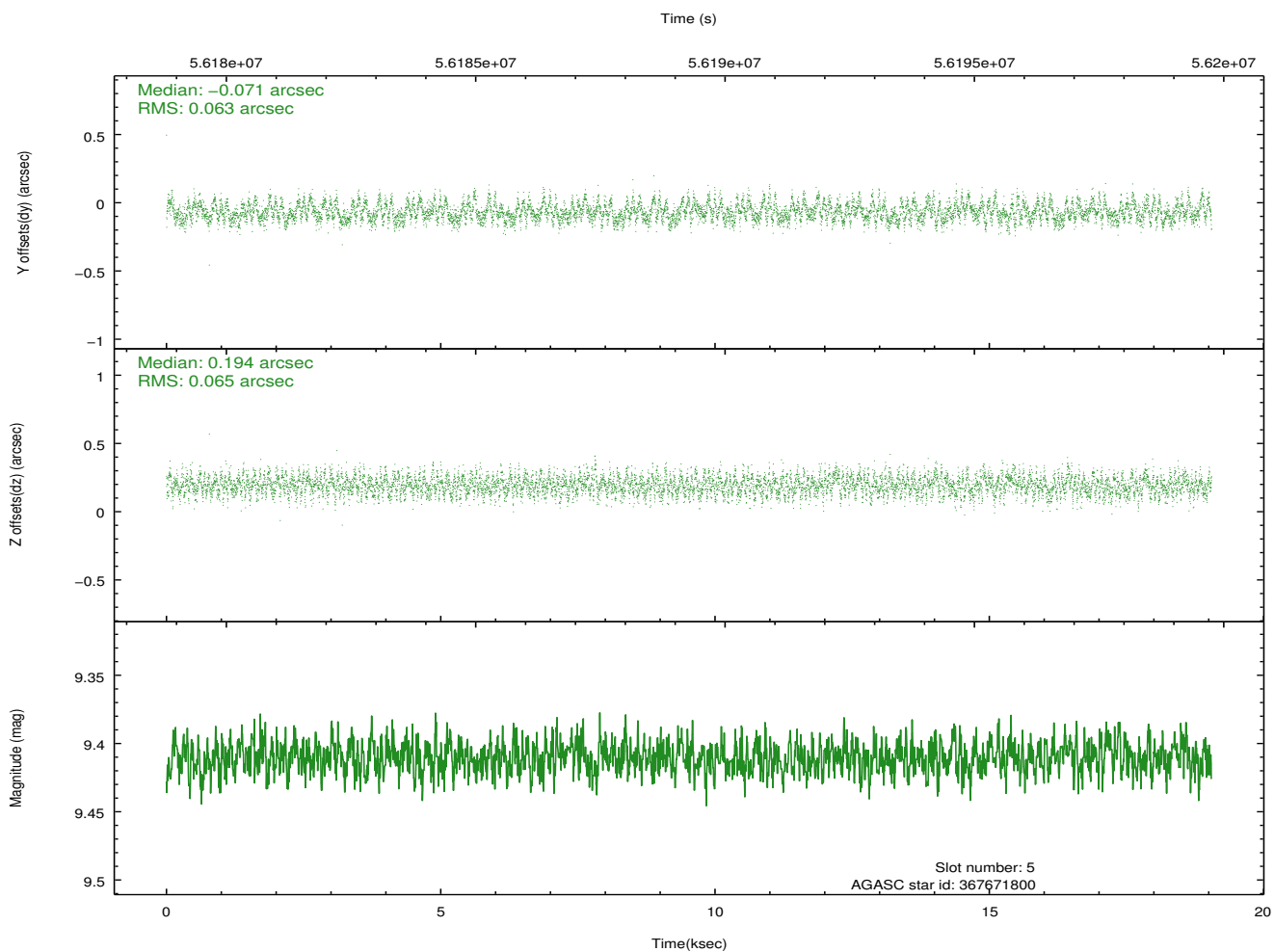
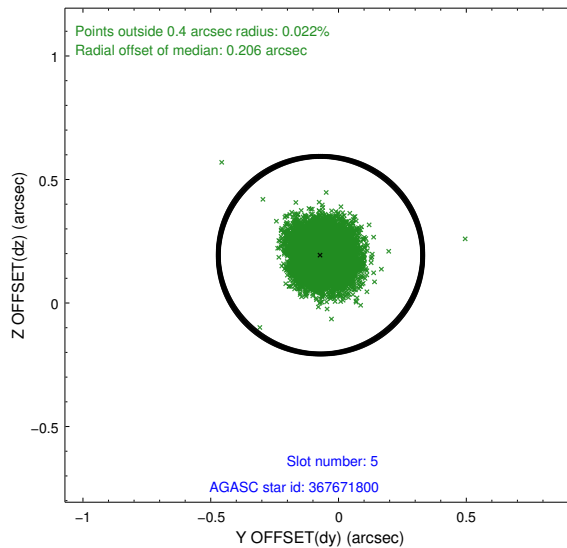
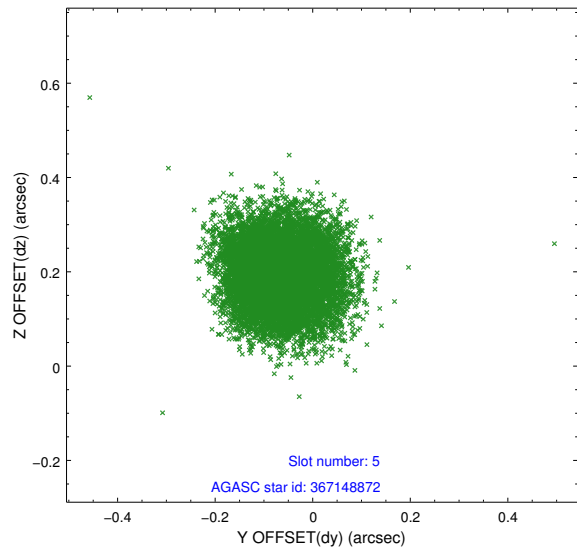
2.4.1 Slot 3



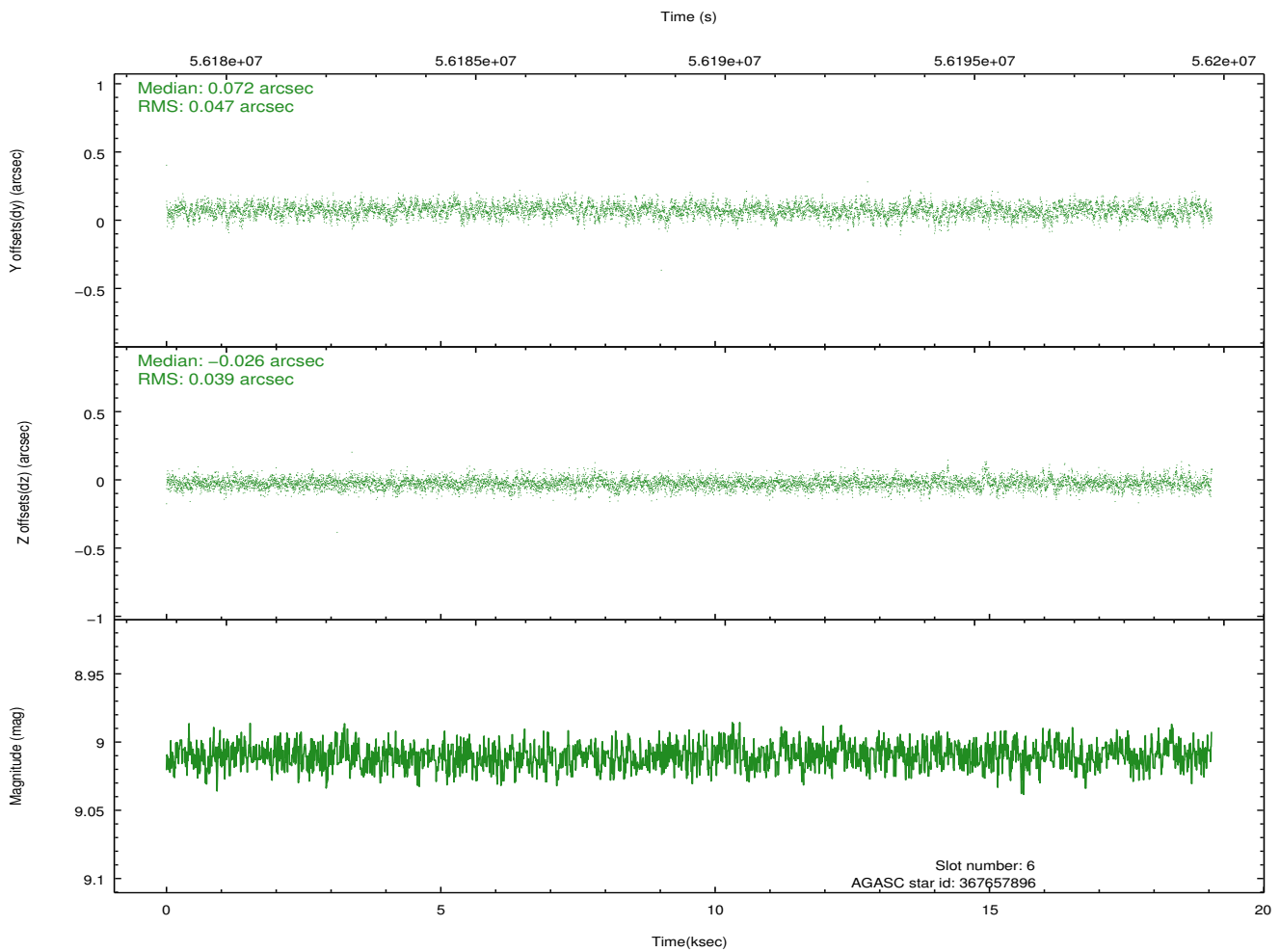
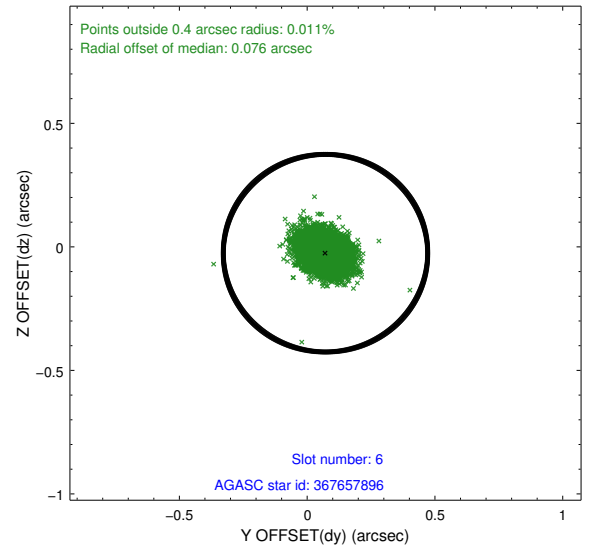
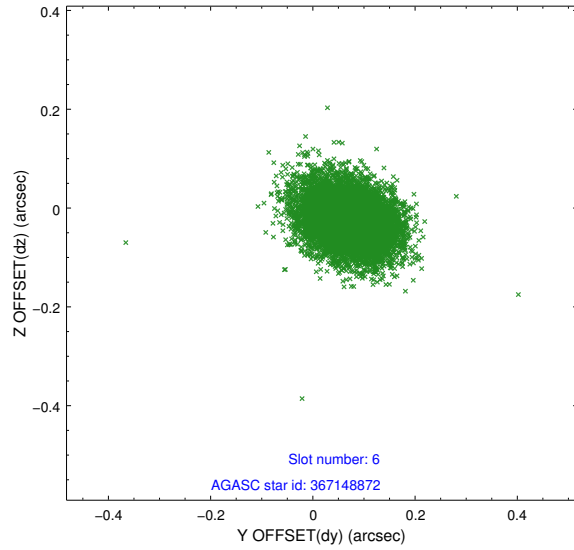
2.4.2 Slot 4



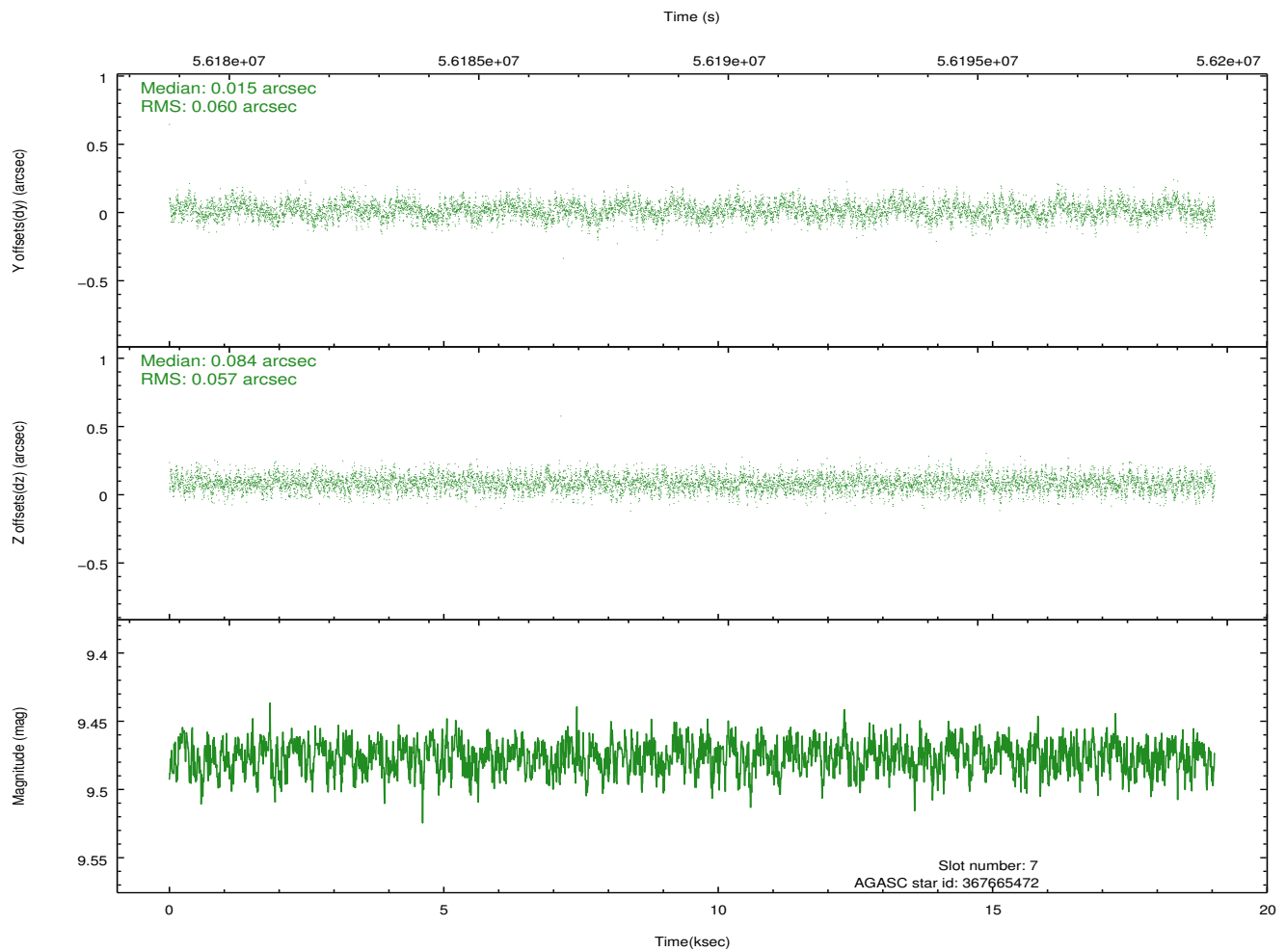
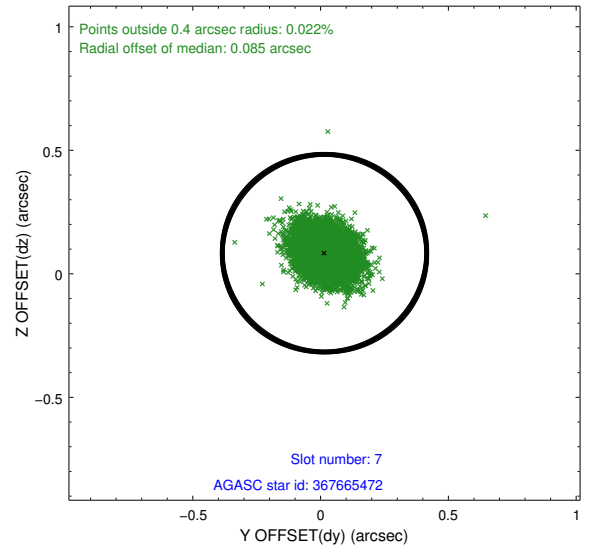
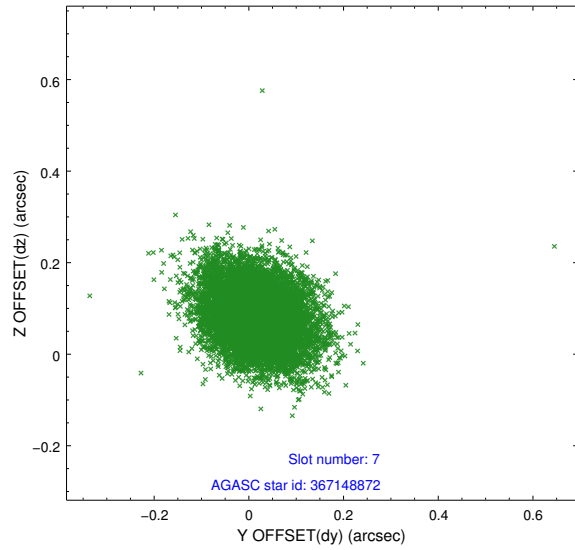
2.4.3 Slot 5



2.4.4 Slot 6

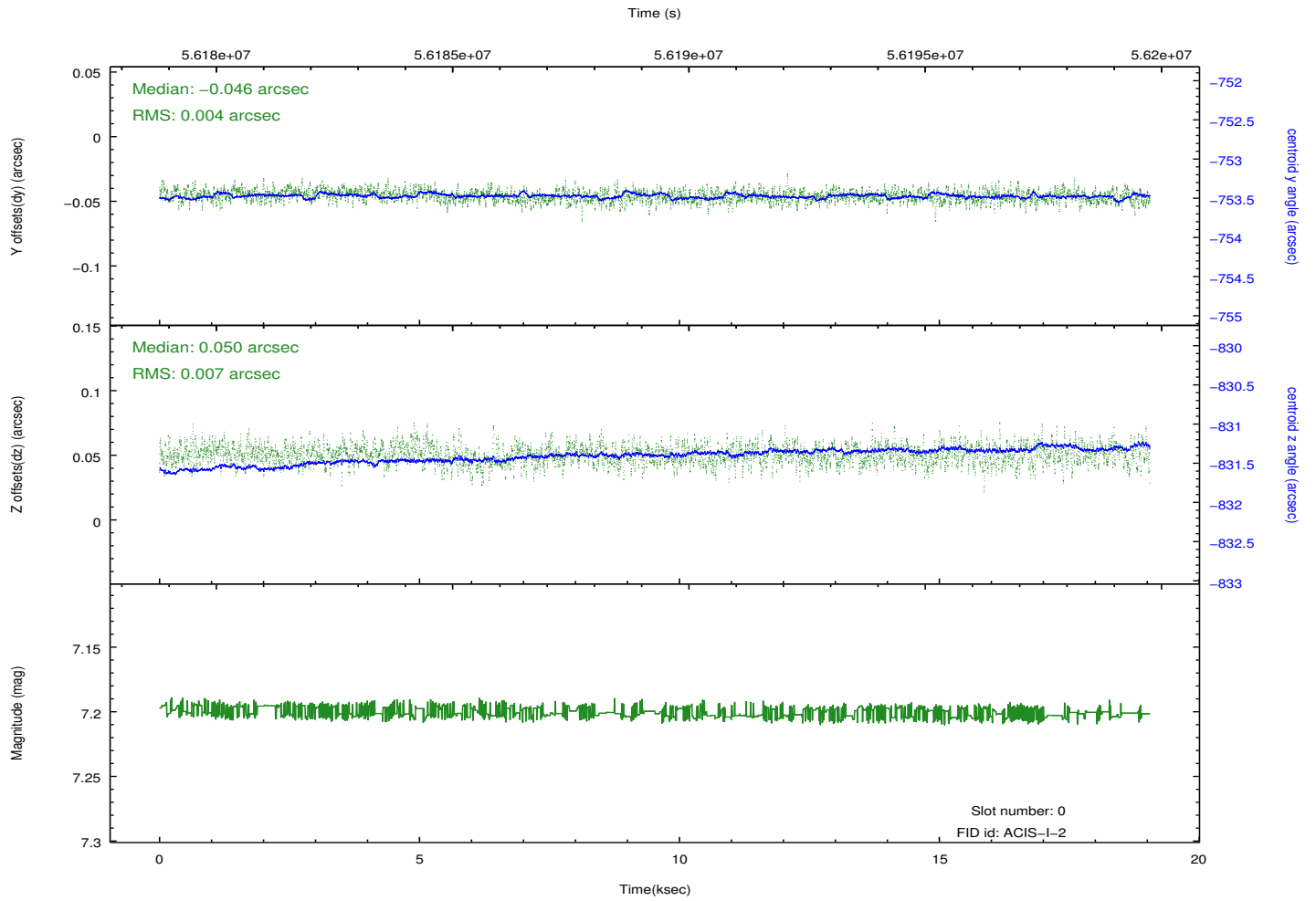
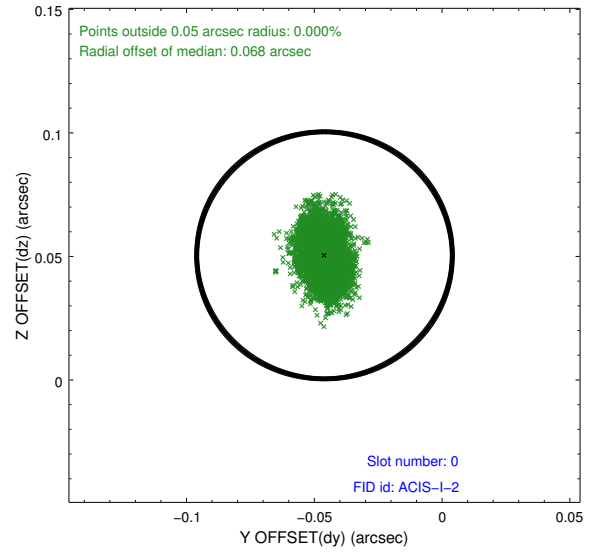
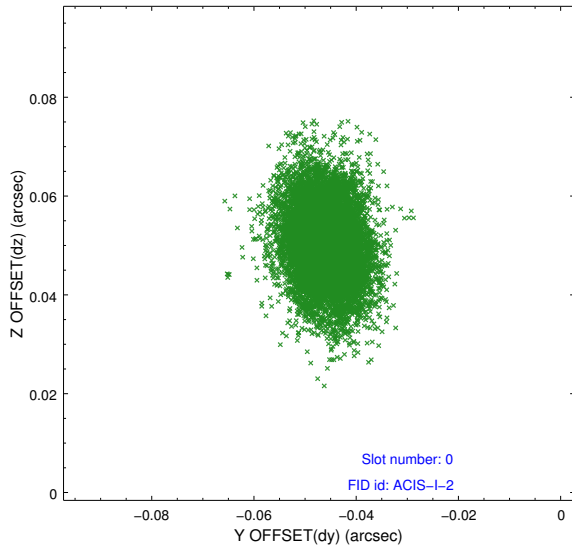


2.4.5 Slot 7

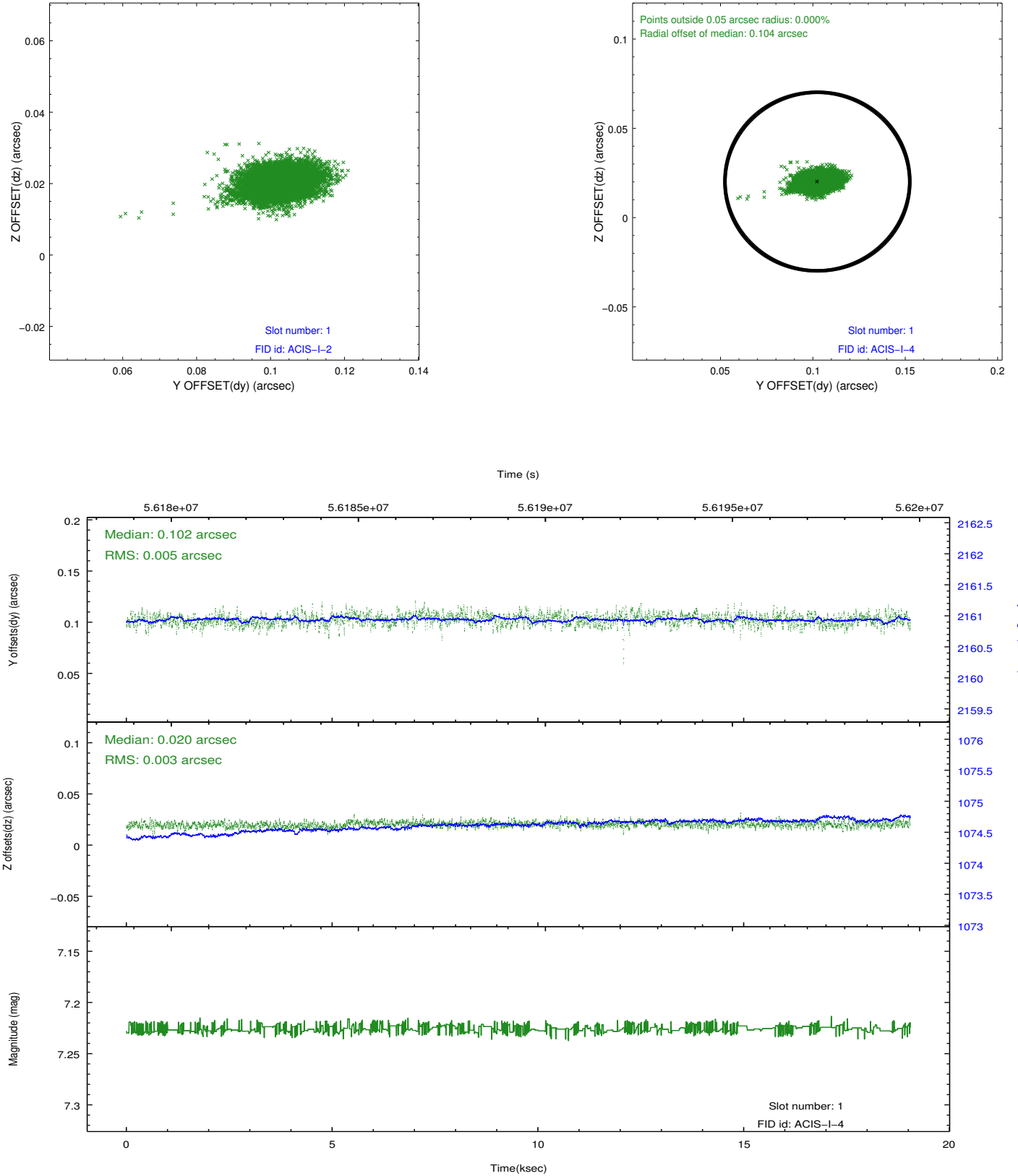


2.5 FID Slots

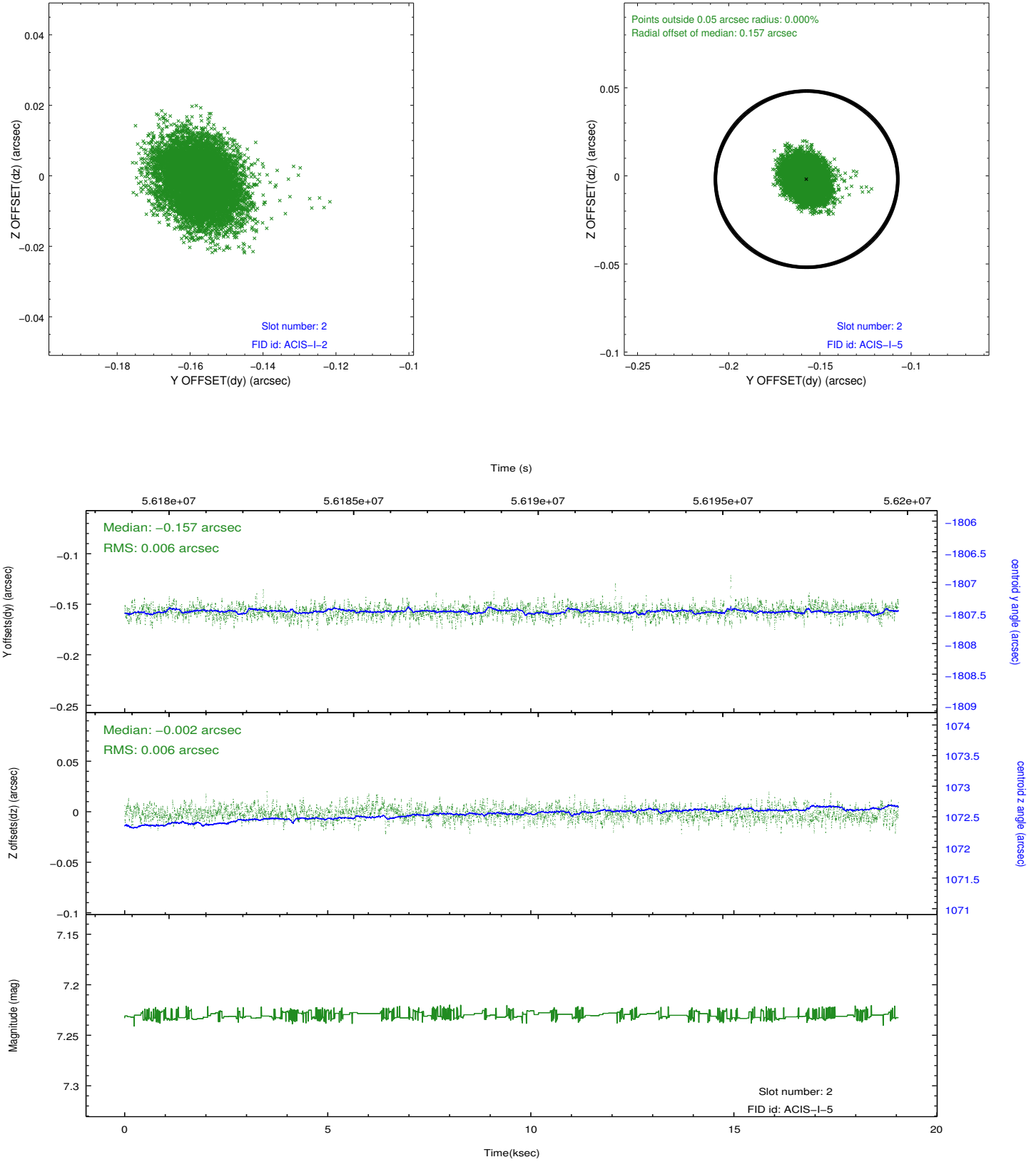
2.5.1 Slot 0



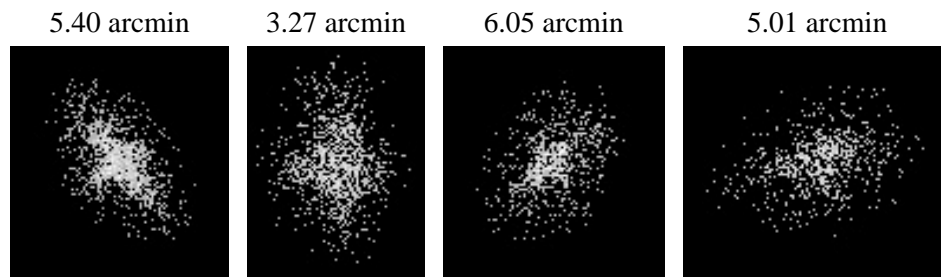
2.5.2 Slot 1



2.5.3 Slot 2



3 Point Sources



A Summary

A.1 Status

V&V Scientist	Joy Nichols
V&V Date (YYYY-MM-DD)	2009.11.20
V&V Edition	1
V&V Disposition and Status	OK
V&V Charge Time	12.014

A.2 Comments

Significant increase in counts in the intervals 4-5 and 11-14 ksec into the observations.

=====

Charge time for this ObsId remains at previous value of 12.014 ksec, although with the current processing the charge time would have been 11.988 ksec.

=====

Focal plane temperature is warmer than -118.7 C degrees during the entire observation. This temperature is the upper limit of the verified ACIS calibration for the front-illuminated chips. The focal plane temperature is warmer than -116.7 degrees C for approximately the entire observation. This temperature is the upper limit of the verified ACIS calibration for the back-illuminated chips. The ACIS spectral response calibration is less accurate at these warmer temperatures than it is at -119.7 C. Users whose science objectives depend on the most accurate spectral response (ie: fitting line-rich spectra) may notice an effect. Users whose science objectives do not depend on the most accurate spectral response should not notice an effect.

=====

Window preference was not met.