

V&V Reference Report

L2 ASCDS Version : 8.4.5

Observation 3063 - L2 Version 3
Chandra X-Ray Center

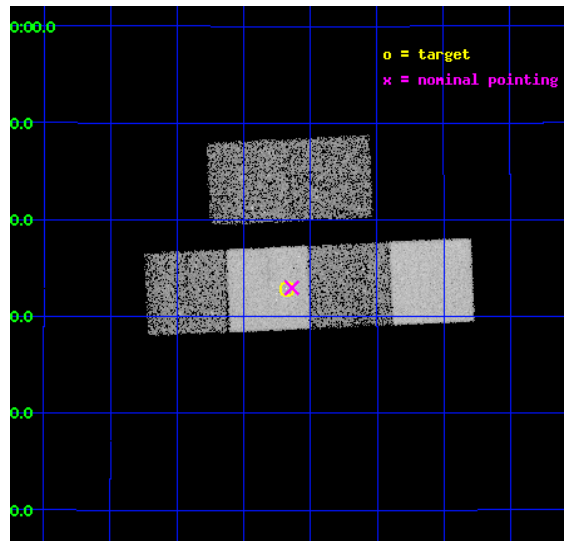
L2 Processing Date : Oct 14 2012

Contents

1	Front	2
2	OBI	3
2.1	OBI	3
2.1.1	Images	3
2.1.2	Bias	3
2.1.3	Parameters	4
2.1.4	Events	4
2.2	Compared Parameters	5
2.3	Aspect	6
2.4	Star Slots	9
2.4.1	Slot 3	9
2.4.2	Slot 4	10
2.4.3	Slot 5	11
2.4.4	Slot 6	12
2.4.5	Slot 7	13
2.5	FID Slots	14
2.5.1	Slot 0	14
2.5.2	Slot 1	15
2.5.3	Slot 2	16
A	Summary	17
A.1	Status	17
A.2	Comments	17

1 Front

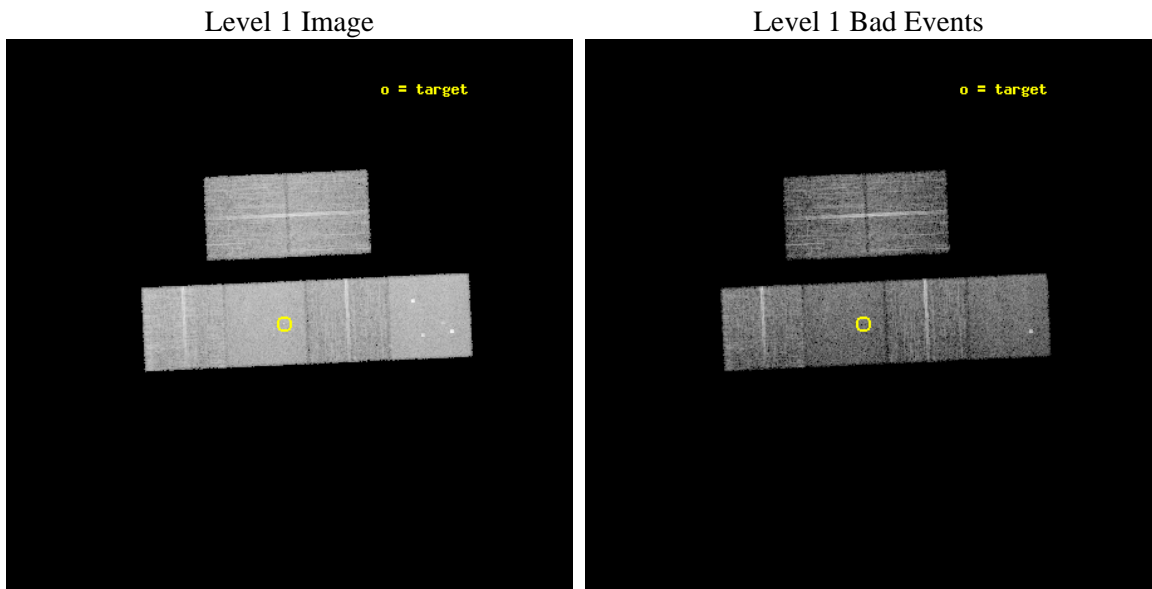
seq_num	700502	Sequence number
obs_id	3063	Observation id
title	X-RAY WEAK BROAD-LINE QUASARS: ABSORPTION OR INTRINSIC X_RAY WEAKNESS ?	Proposal title
observer	Dr Guido Risaliti	Principal investigator
object	HS 0017+2116	Source name
dtcycle	0	
cycle	P	events from which exps? Prim/Second/Both
ra_targ	5.045	Observer's specified target RA [deg]
dec_targ	21.5475	Observer's specified target Dec [deg]
ra_nom	5.0348450542857	Nominal RA [deg]
dec_nom	21.54960198546	Nominal Dec [deg]
roll_nom	177.39441246222	Nominal Roll [deg]
revision	3	Processing version of data
ontime	10127.958991975	Sum of GTIs [s]
livetime	9999.7126768935	Livetime [s]
ontime2	10131.199962258	Sum of GTIs [s]
ontime3	10124.718031734	Sum of GTIs [s]
ontime5	10131.199962258	Sum of GTIs [s]
ontime6	10131.199962258	Sum of GTIs [s]
ontime7	10127.958991975	Sum of GTIs [s]
ontime8	10131.199962258	Sum of GTIs [s]
l2events	97487	Number of level 2 events



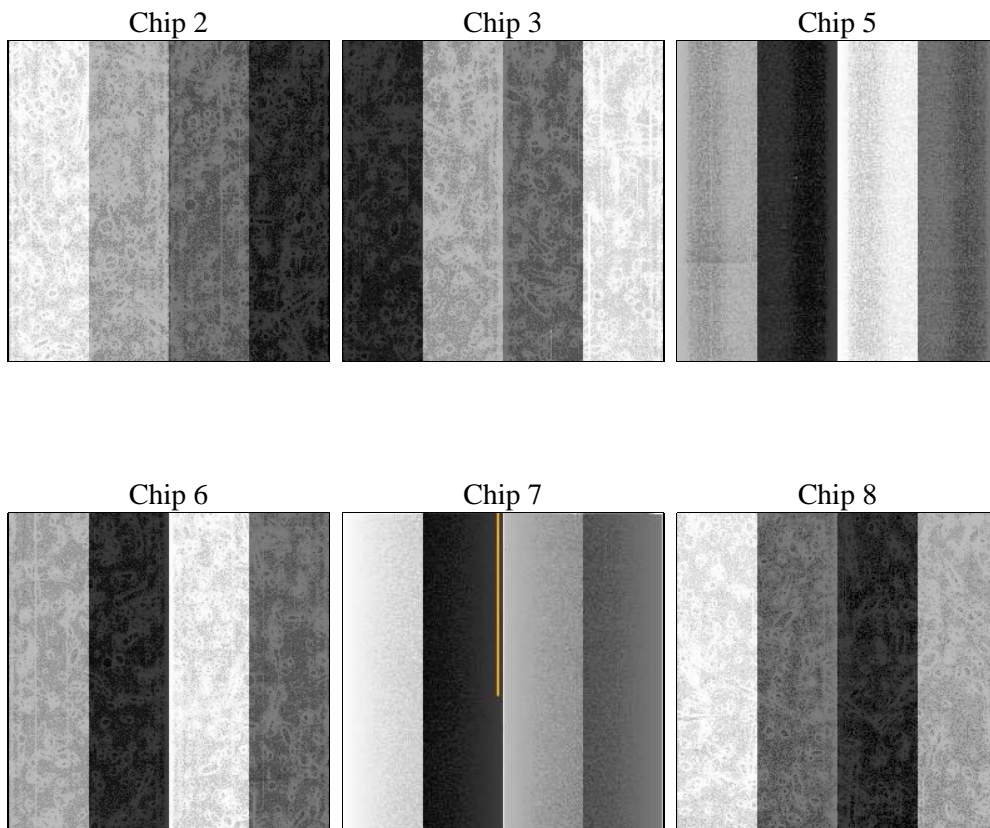
2 OBI

2.1 OBI

2.1.1 Images



2.1.2 Bias



2.1.3 Parameters

obi_num	1	Obi number	sched_exp_time	10000.000000	[s] Scheduled observation exposure time
ascdsver	8.4.5	Processing system revision	ontime	10127.958991975	Sum of GTIs [s]
caldbver	4.5.2	 	ontime2	10131.199962258	Sum of GTIs [s]
date	2012-10-14T20:31:09	Date and time of file creation	ontime3	10124.718031734	Sum of GTIs [s]
revision	3	Processing version of data	ontime5	10131.199962258	Sum of GTIs [s]
			ontime6	10131.199962258	Sum of GTIs [s]
			ontime7	10127.958991975	Sum of GTIs [s]
			ontime8	10131.199962258	Sum of GTIs [s]
			l1events	450299	Number of level 1 events

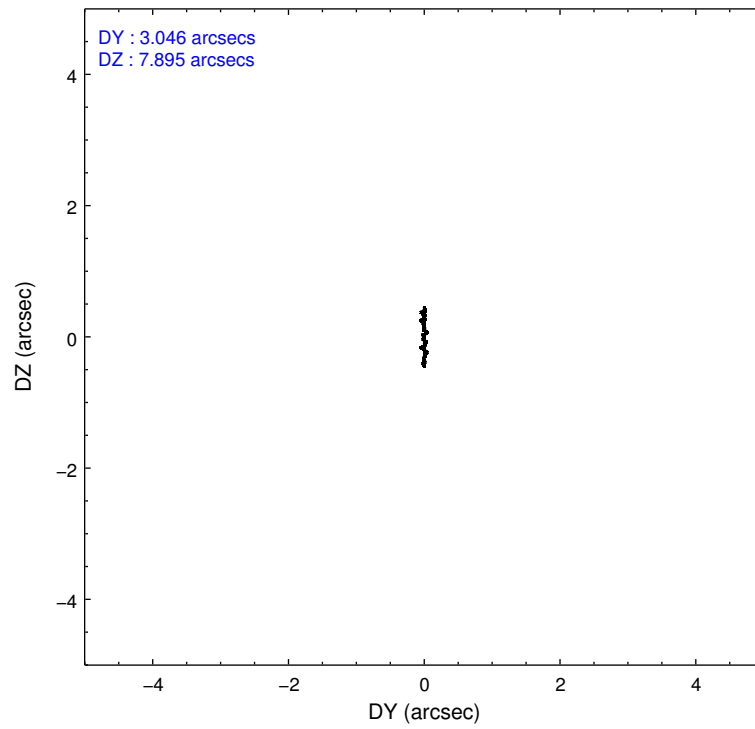
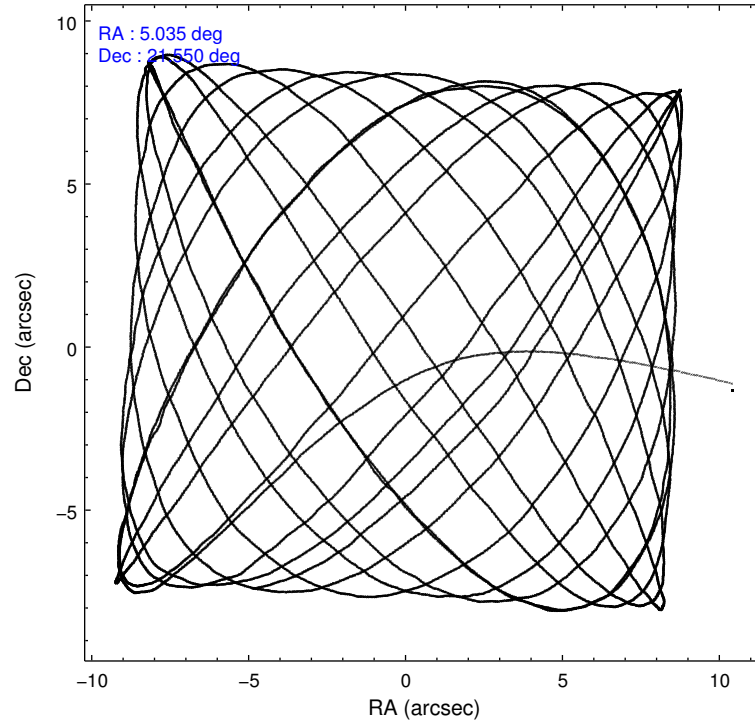
2.1.4 Events

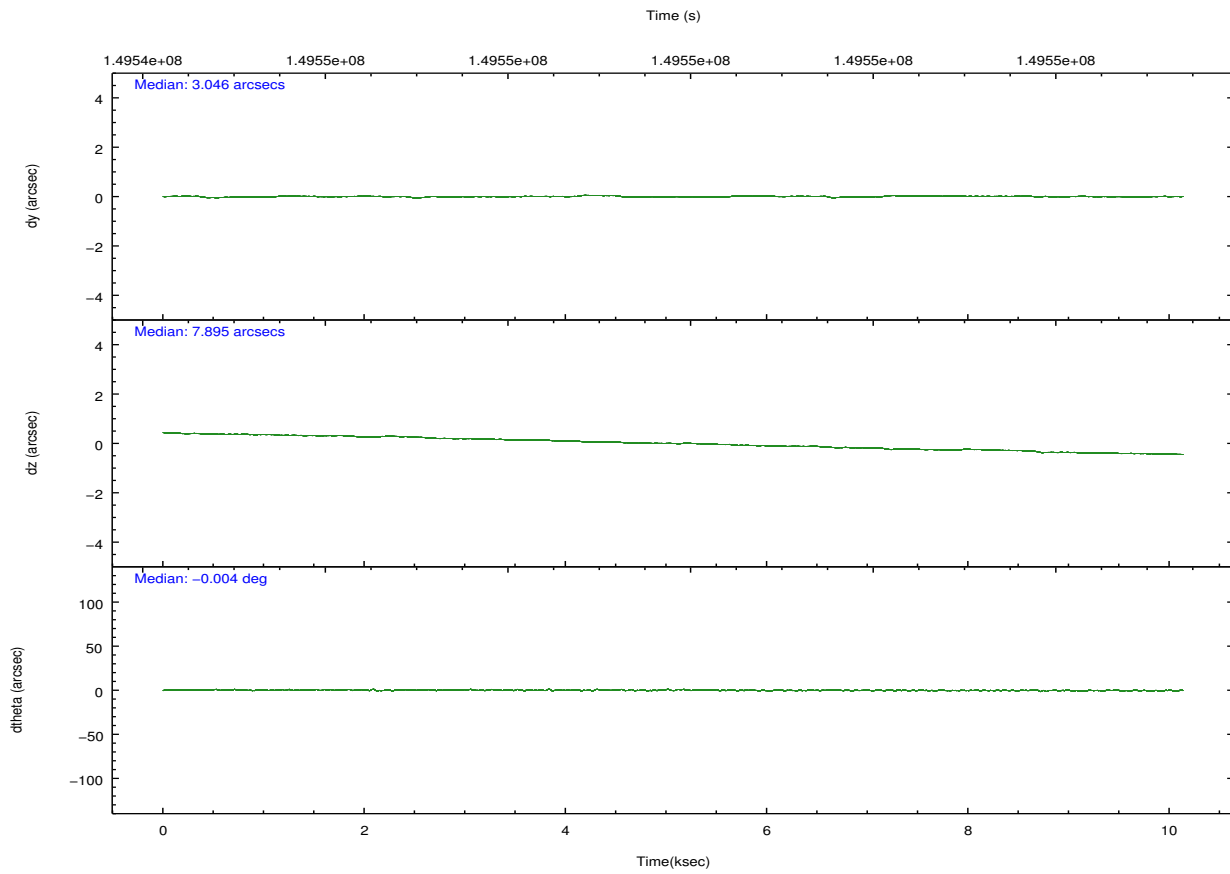
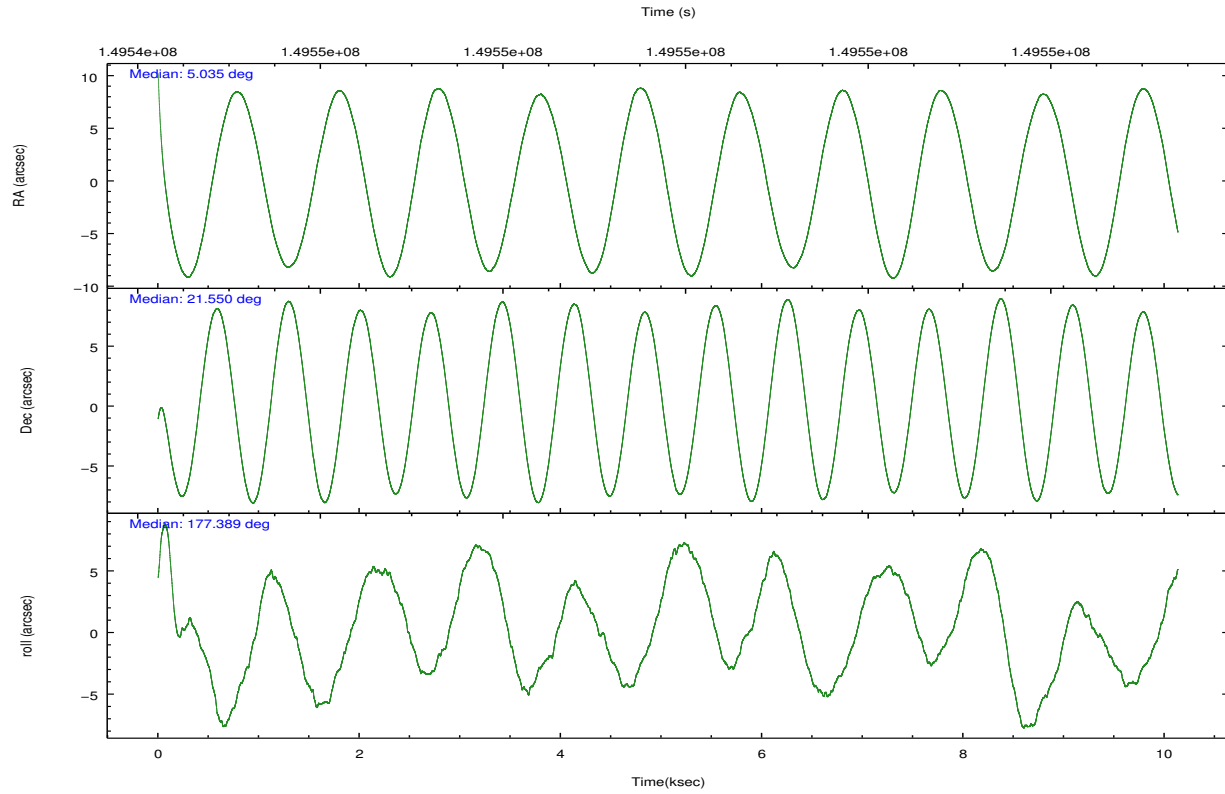
	ccd 2	ccd 3	ccd 5	ccd 6	ccd 7	ccd 8		ccd 2	ccd 3	ccd 5	ccd 6	ccd 7	ccd 8
level 1 events	63400	62754	92786	63954	84063	83342	grade 0 events	3305	3259	4914	3069	3233	5863
rejected events	56116	55634	50819	56365	50087	65367		5%	5%	5%	4%	3%	7%
rejected %	88%	88%	54%	88%	59%	78%	grade 1 events	45	34	101	21	69	42
								0%	0%	0%	0%	0%	0%
							grade 2 events	1471	1312	12431	1546	6794	3793
								2%	2%	13%	2%	8%	4%
							grade 3 events	702	712	2044	771	3066	2117
								1%	1%	2%	1%	3%	2%
							grade 4 events	754	660	1617	709	3095	1928
								1%	1%	1%	1%	3%	2%
							grade 5 events	2568	2608	7142	2879	8027	3647
								4%	4%	7%	4%	9%	4%
							grade 6 events	1156	1280	21621	1603	18287	4705
								1%	2%	23%	2%	21%	5%
							grade 7 events	53399	52889	42916	53356	41492	61247
								84%	84%	46%	83%	49%	73%

2.2 Compared Parameters

Parameter	Planned	Actual	Parameter	Planned	Actual
Instrument	ACIS	ACIS	Obspar format version number	7	7
Detector	ACIS-235678	ACIS-235678	Obspar file type	PREDICTED	ACTUAL
Grating	NONE	NONE	Obspar update status	NONE	UPDATED
Data mode	FAINT	FAINT	Number of optional ACIS chips dropped	0	0
Observation mode	POINTING	POINTING	On-chip summing requested	N	N
[deg] Pointing RA	5.060674	5.034845054285654	Subarray requested	NONE	NONE
[deg] Pointing Dec	21.562476	21.54960198545995	Alternating exposures requested	N	N
[deg] Pointing Roll	177.228295	177.3944124622163	[s] Primary exposure time	0.000000	3.2
[mm] SIM focus pos	-0.684267	-0.6828225247311905			
[mm] SIM defocus	0	0.001444936568705701			
[mm] SIM translation stage pos	-190.132523	-190.1425803651734			
[mm] SIM translation stage offset	0	0.01005778216563158			
[s] Observation start time (MET)	149544874.184000	149543753.45017			
Observation start date	2002-09-27T20:13:30	2002-09-27T19:55:53			
[s] Observation end time (MET)	149554874.184000	149555912.51317			
Observation end date	2002-09-27T23:00:10	2002-09-27T23:18:32			
Read mode	TIMED	TIMED			

2.3 Aspect



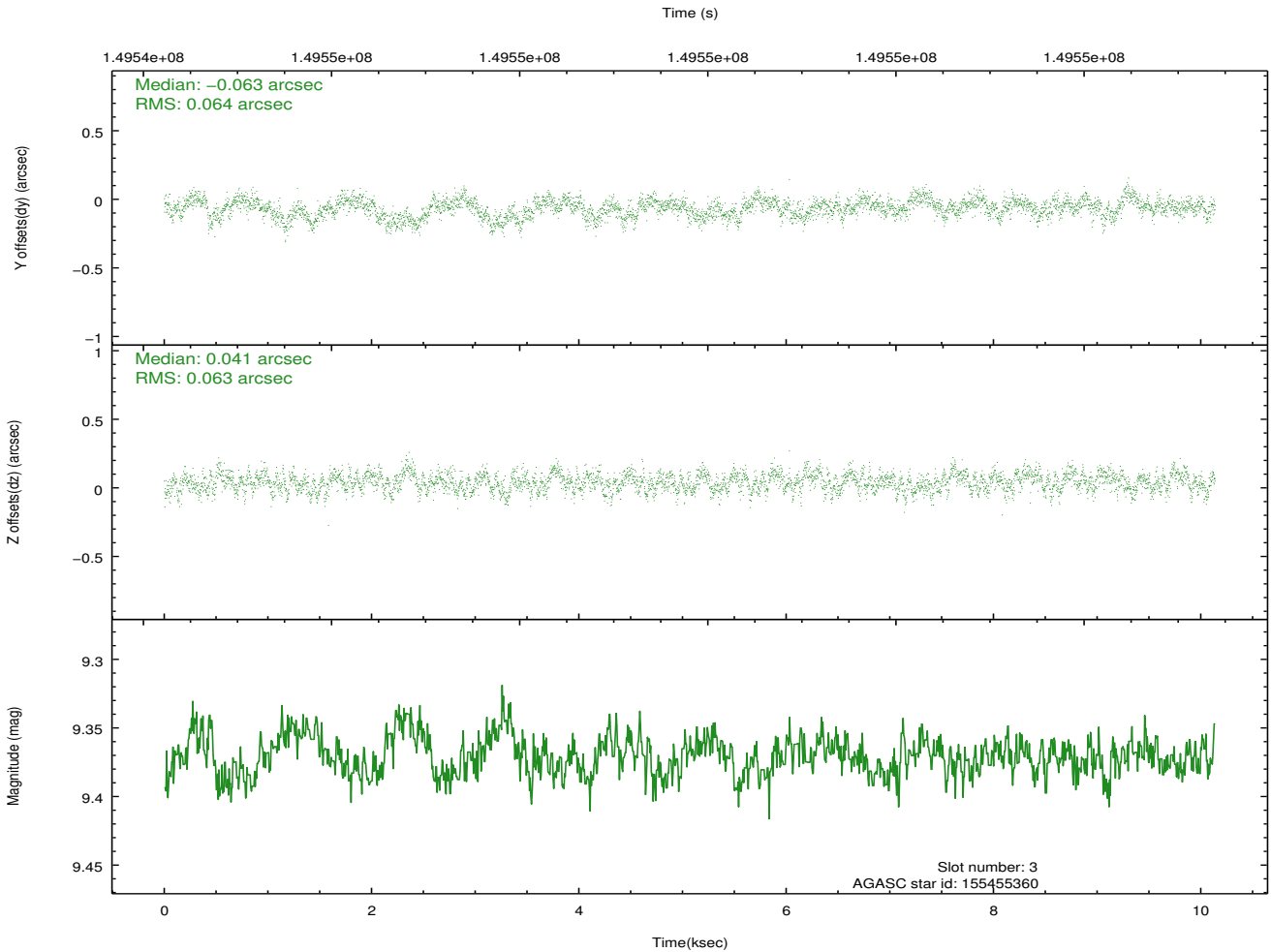
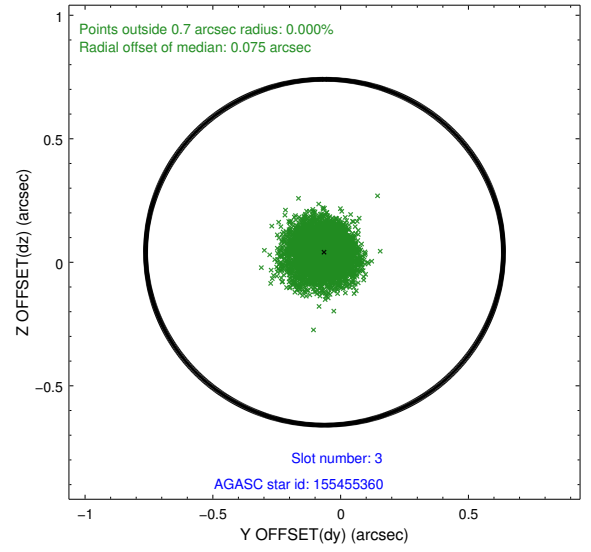
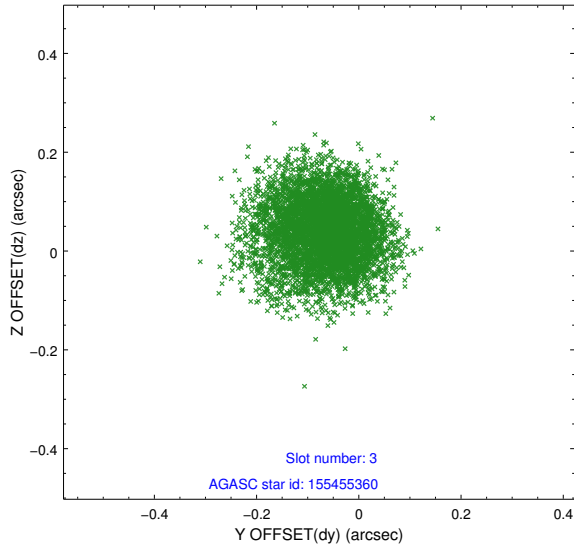


Slot Statistics

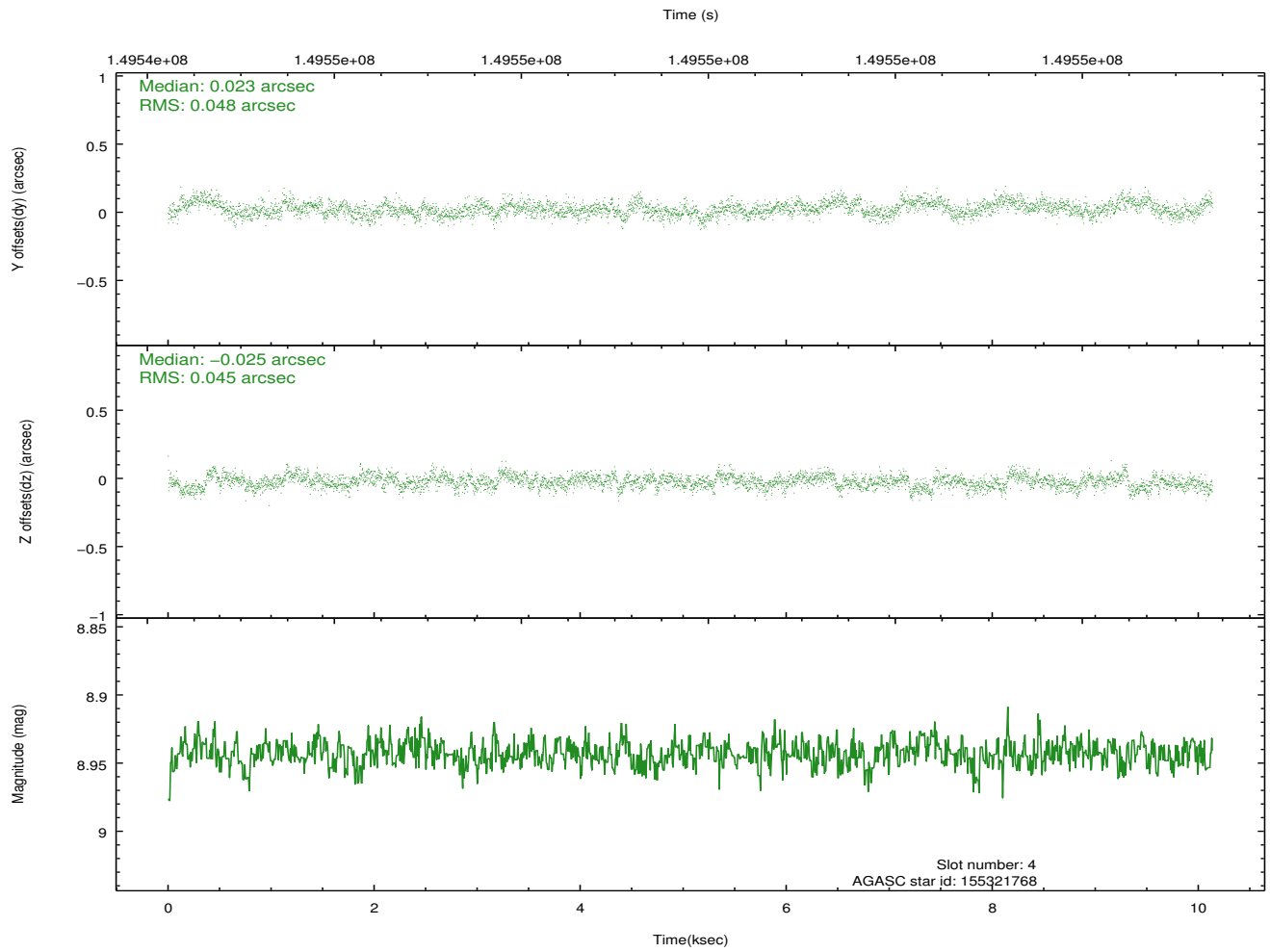
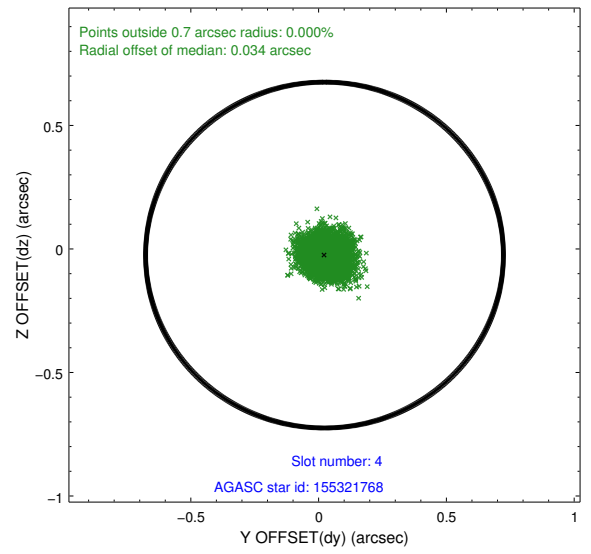
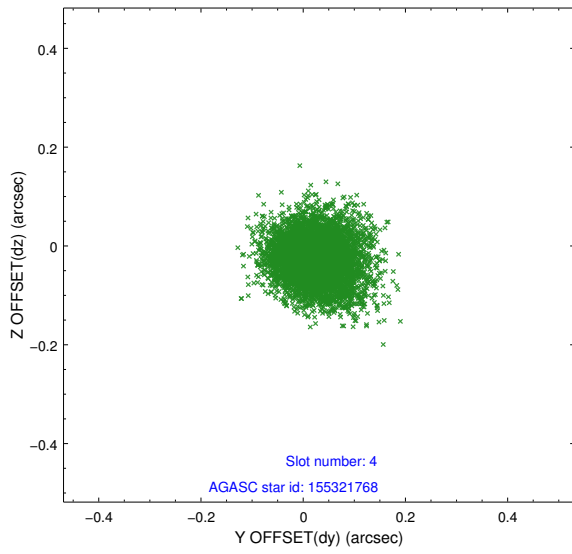
slot	status	id	mag	n_pts	med_dy	med_dz	dr1	dr2	ra	dec	mean_y	mean_z
0	FID	ACIS-S-2	7.11	2472	-0.009	-0.005	0.007	0.013	0.000000	0.000000	-755.71	-1729.03
1	FID	ACIS-S-4	7.20	2472	-0.008	0.006	0.006	0.011	0.000000	0.000000	2157.35	178.91
2	FID	ACIS-S-5	7.24	2472	-0.015	0.008	0.007	0.013	0.000000	0.000000	-1807.87	173.21
3	GUIDE	155455360	9.37	4944	-0.063	0.041	0.096	0.155	5.717906	22.177549	-2080.38	-2321.88
4	GUIDE	155321768	8.94	4943	0.023	-0.025	0.069	0.114	4.613794	21.477628	1480.81	375.64
5	GUIDE	155457512	9.08	4944	-0.058	-0.042	0.081	0.137	5.391079	21.239451	-1162.64	1107.47
6	GUIDE	155331936	9.30	4940	0.086	-0.070	0.090	0.148	5.163761	21.833166	-296.56	-989.41
7	GUIDE	155320904	9.65	4924	0.028	0.096	0.113	0.292	4.856782	21.638106	695.39	-238.83

2.4 Star Slots

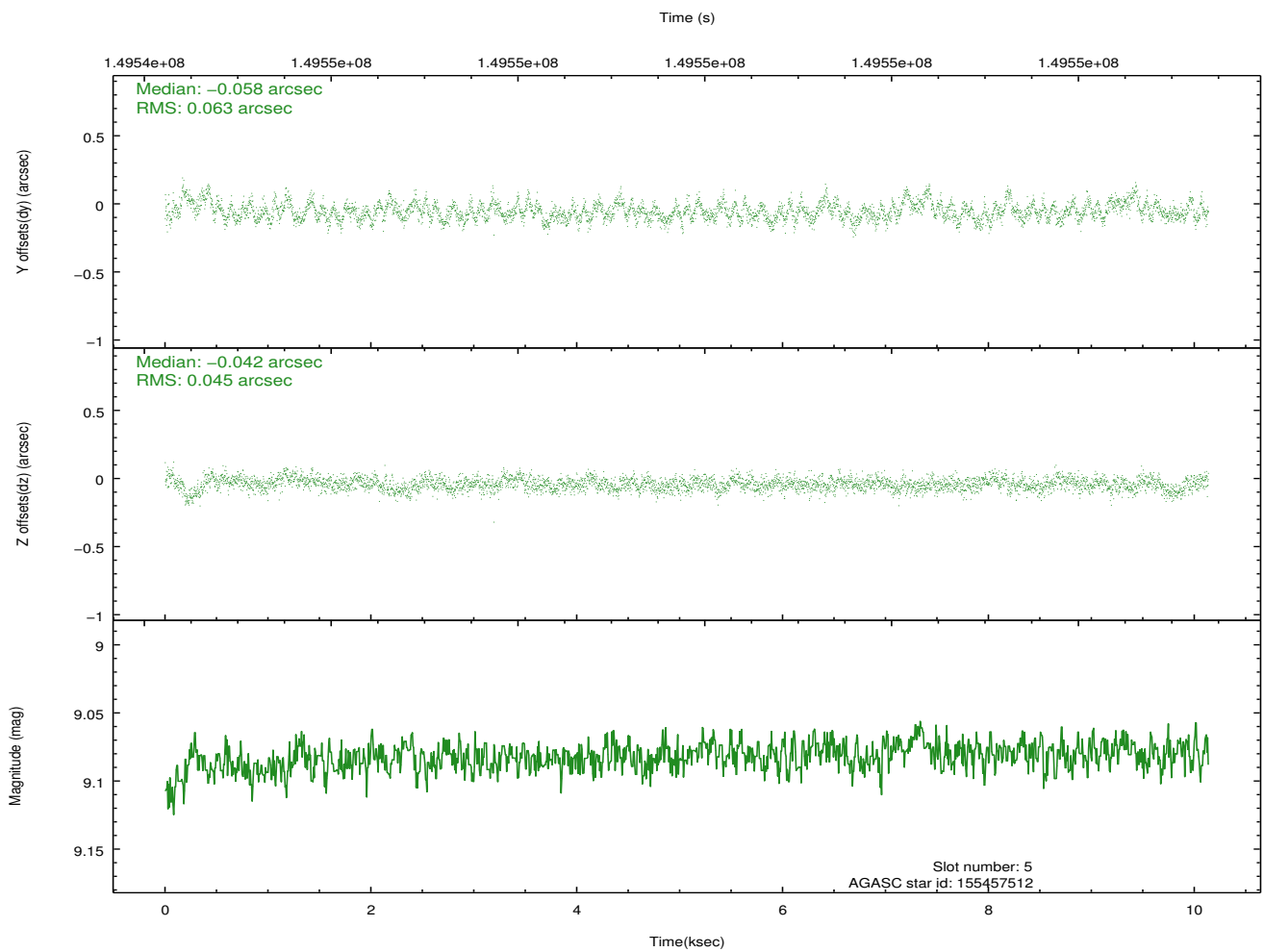
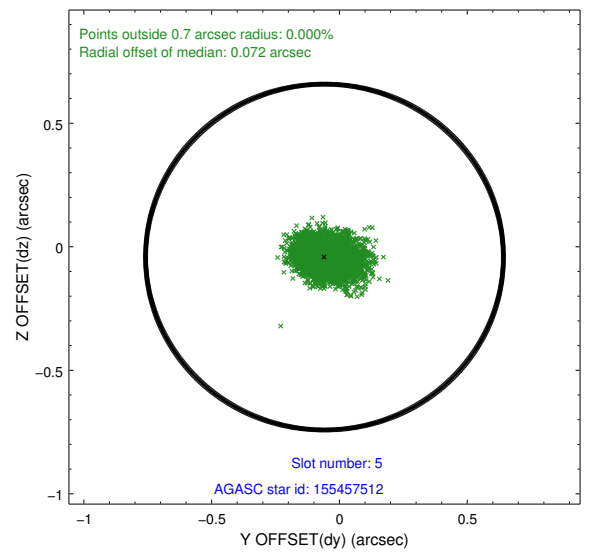
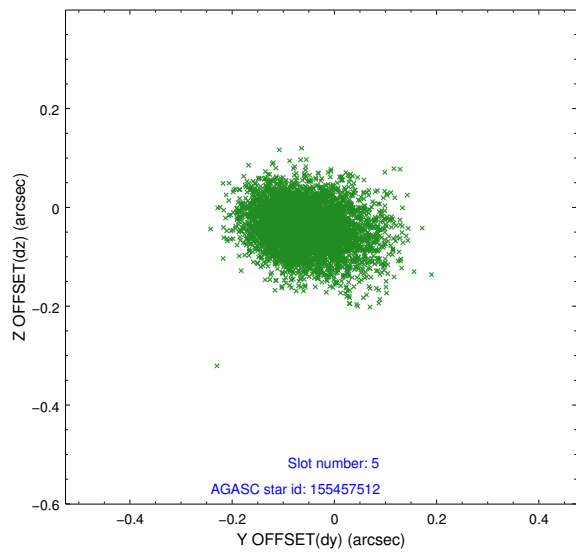
2.4.1 Slot 3



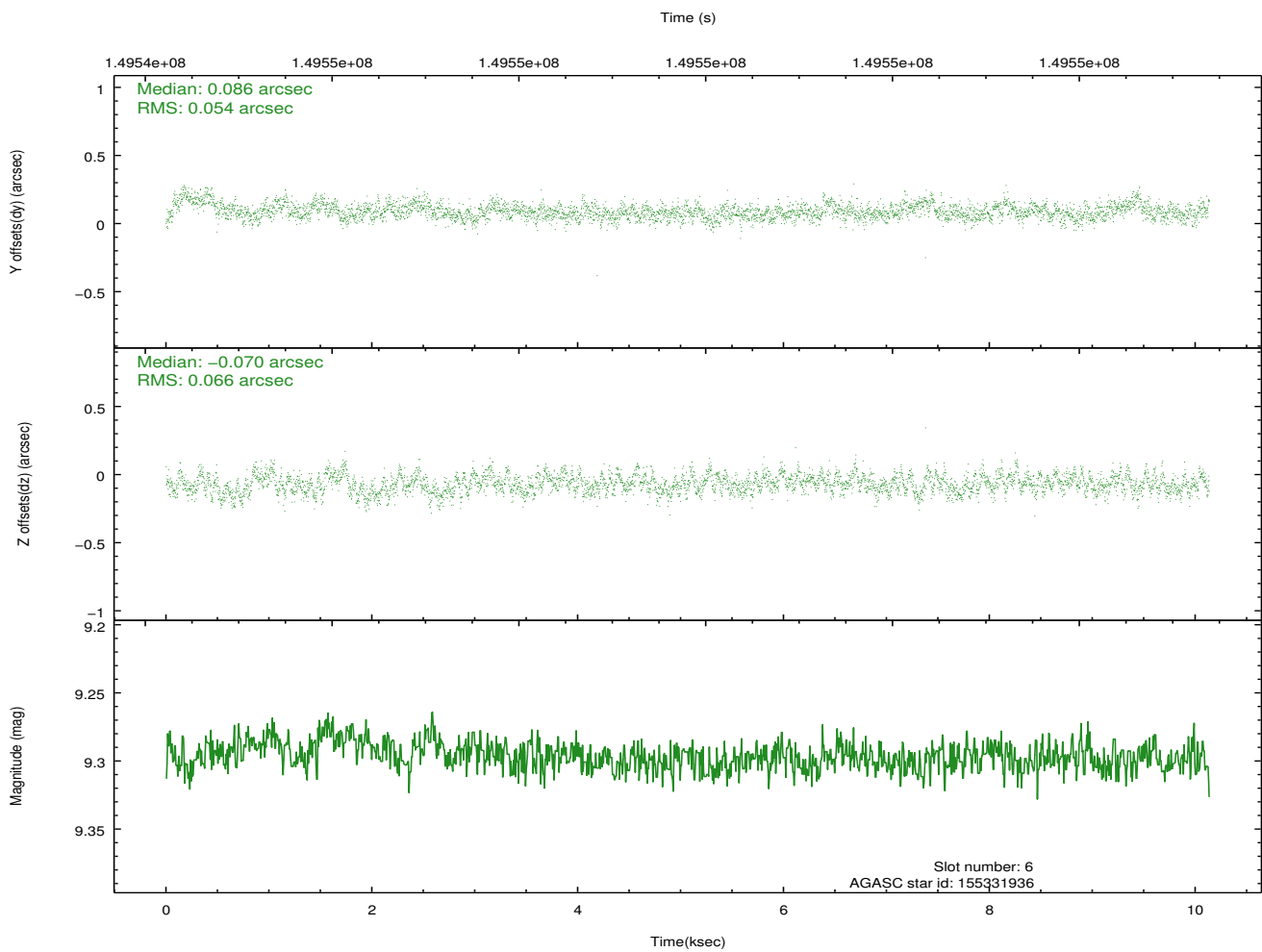
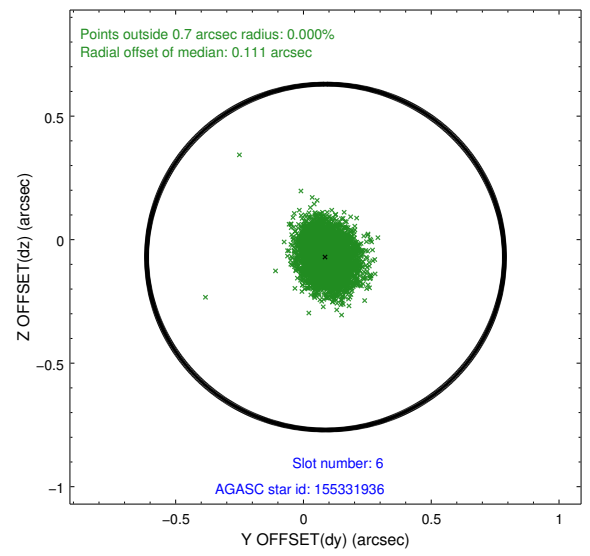
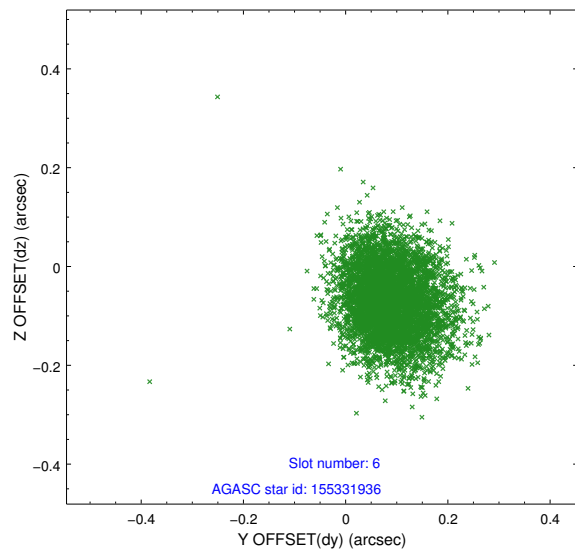
2.4.2 Slot 4



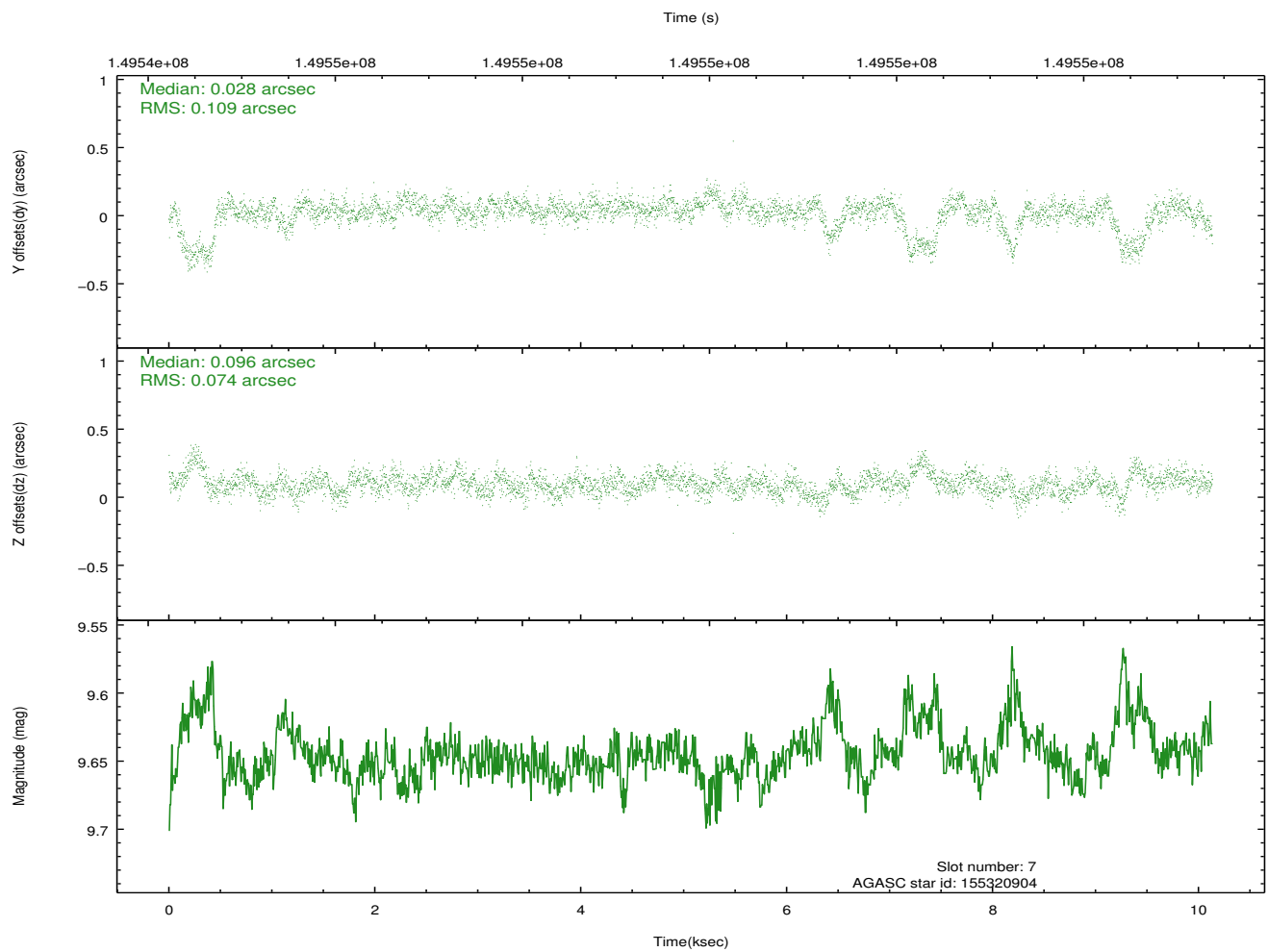
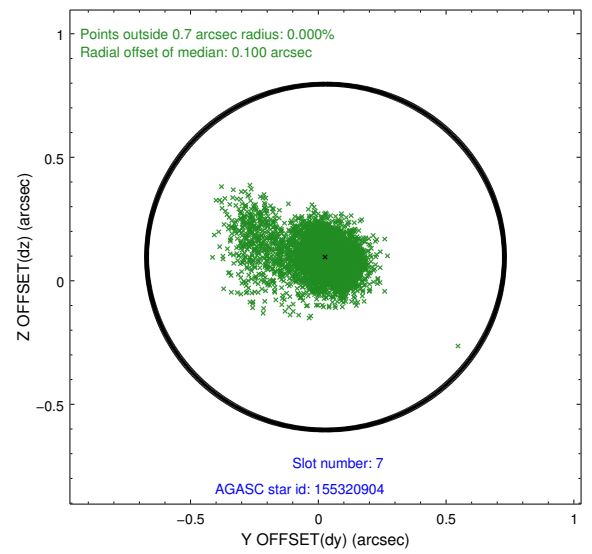
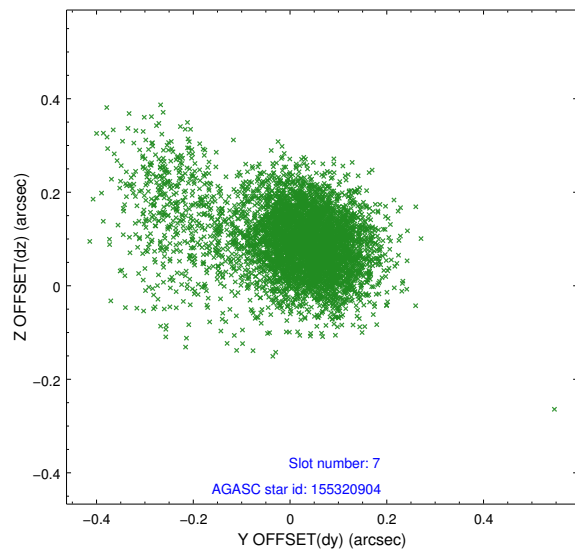
2.4.3 Slot 5



2.4.4 Slot 6

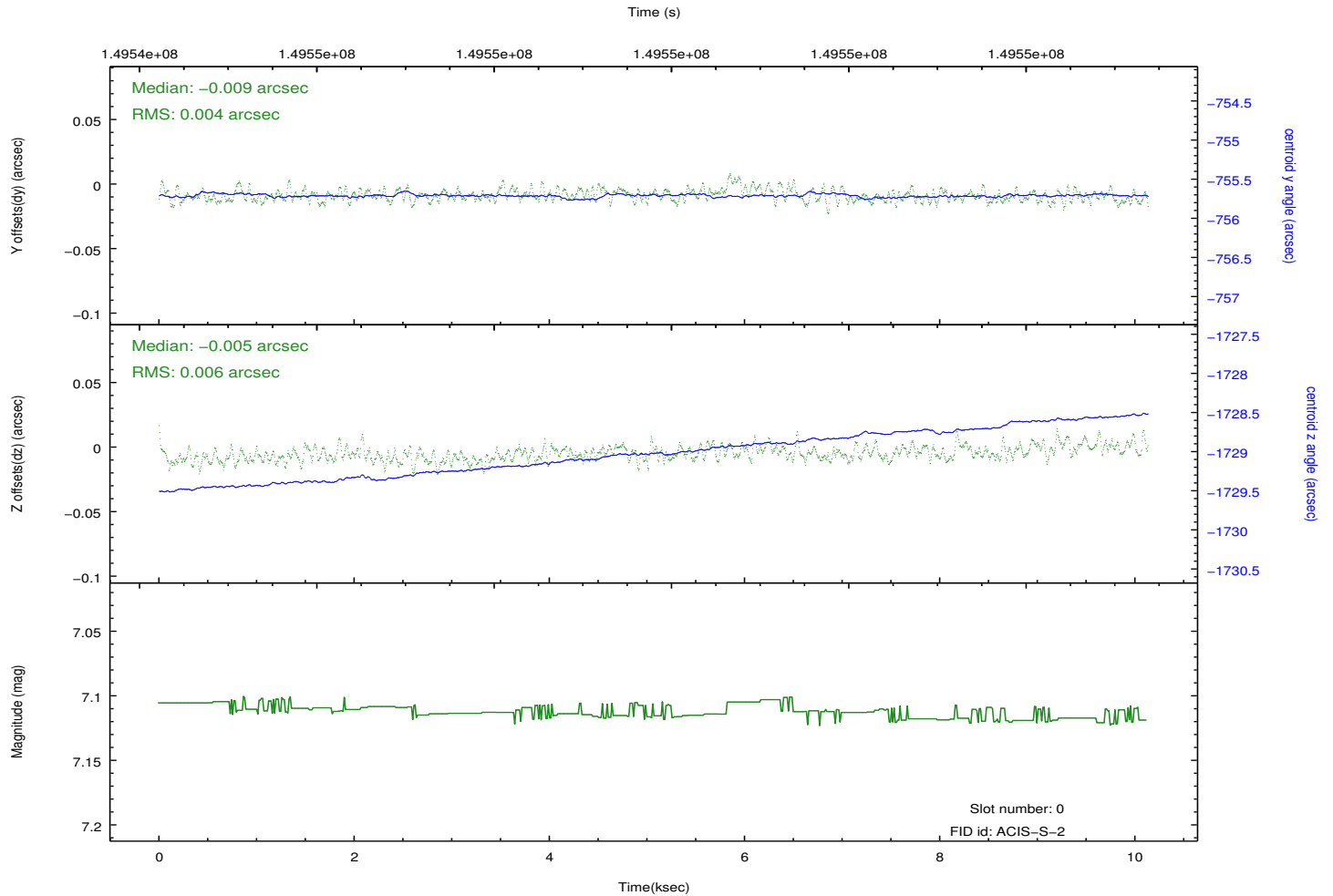
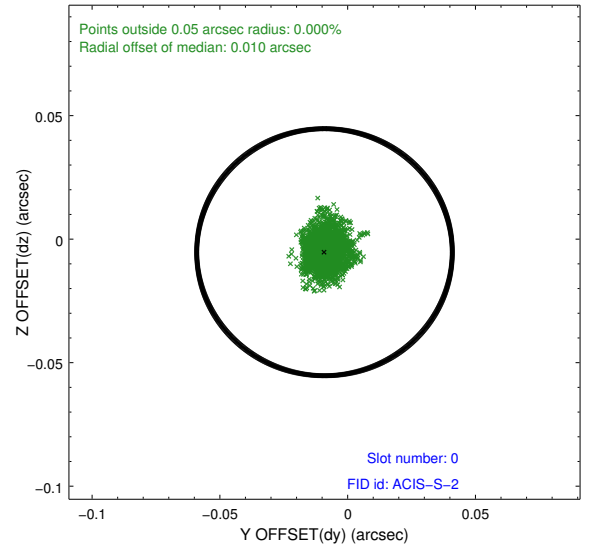
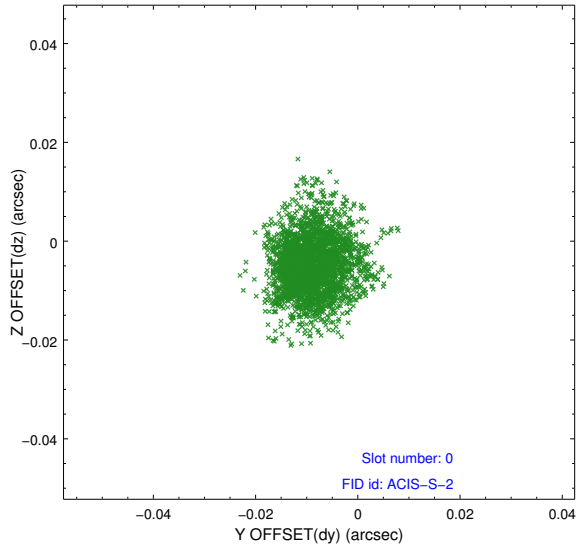


2.4.5 Slot 7

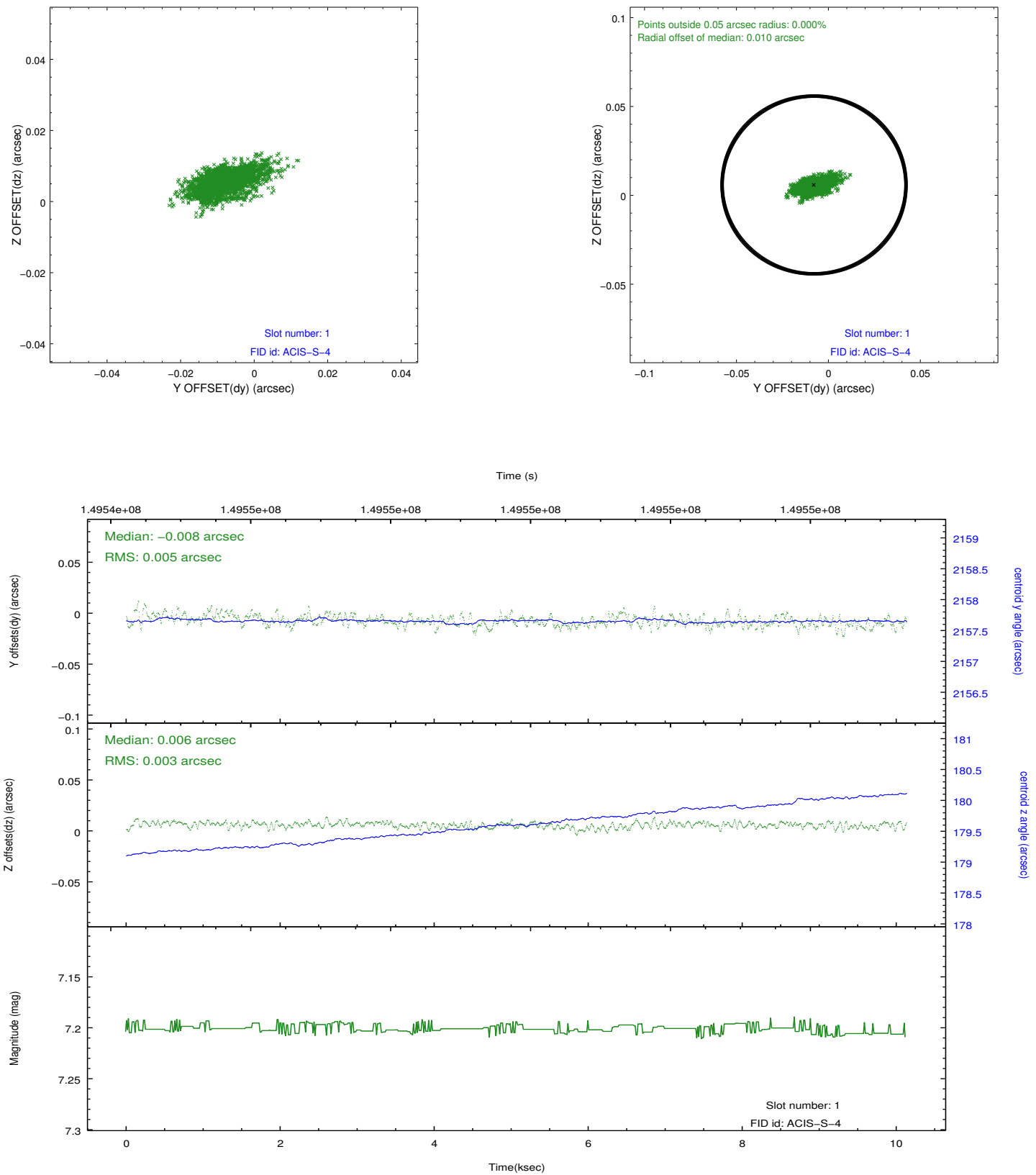


2.5 FID Slots

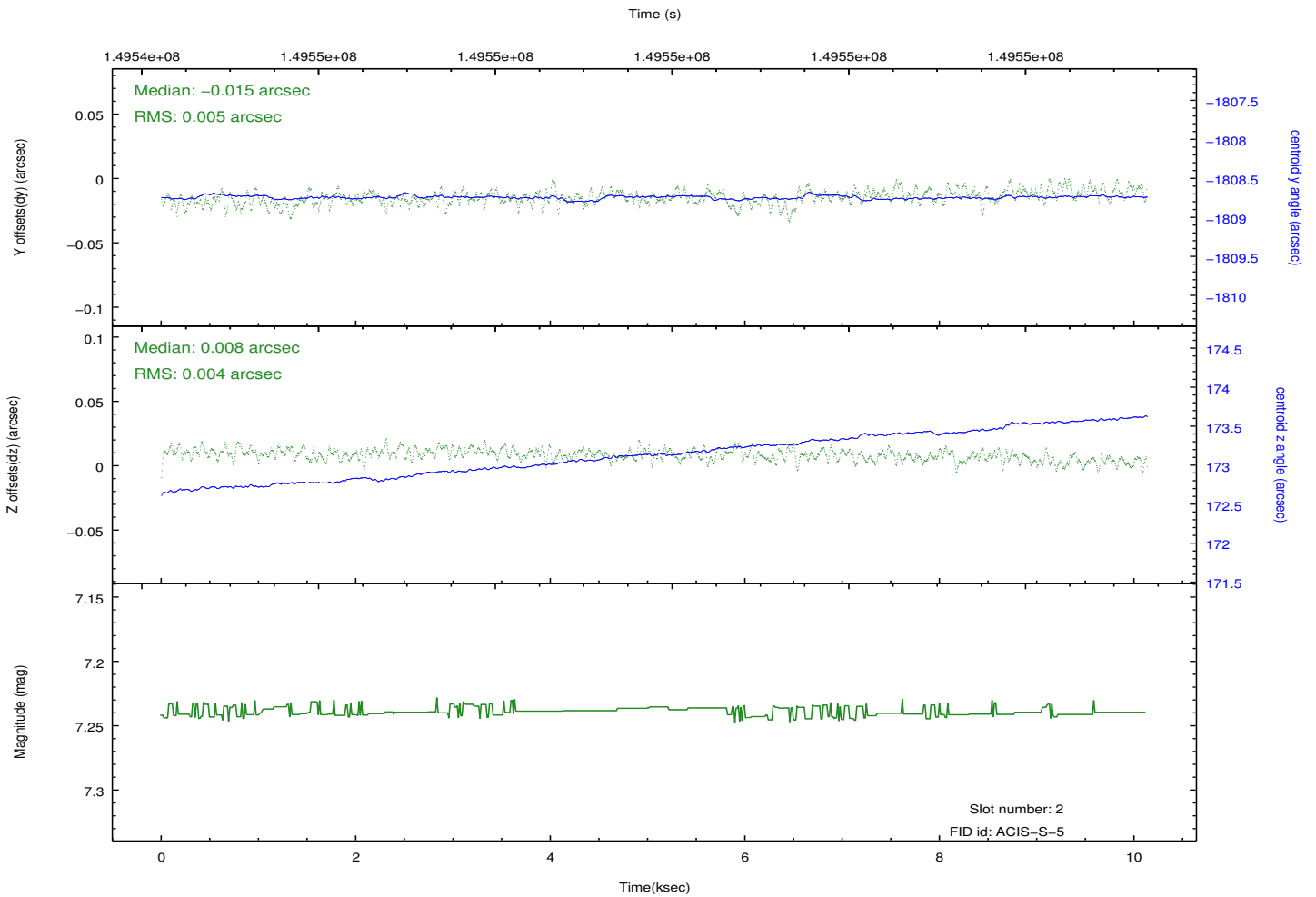
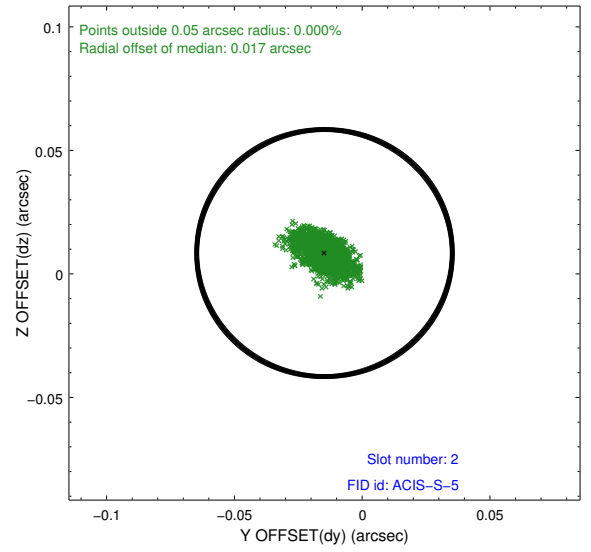
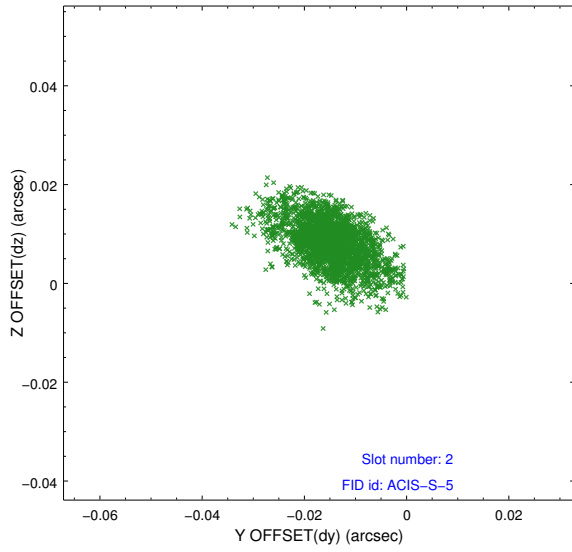
2.5.1 Slot 0



2.5.2 Slot 1



2.5.3 Slot 2



A Summary

A.1 Status

V&V Scientist	Jen Lauer
V&V Date (YYYY-MM-DD)	2012.10.24
V&V Edition	1
V&V Disposition and Status	OK
V&V Charge Time	10.128

A.2 Comments