

V&V Reference Report

L2 ASCDS Version : 8.4.5

Observation 3083 - L2 Version 3
Chandra X-Ray Center

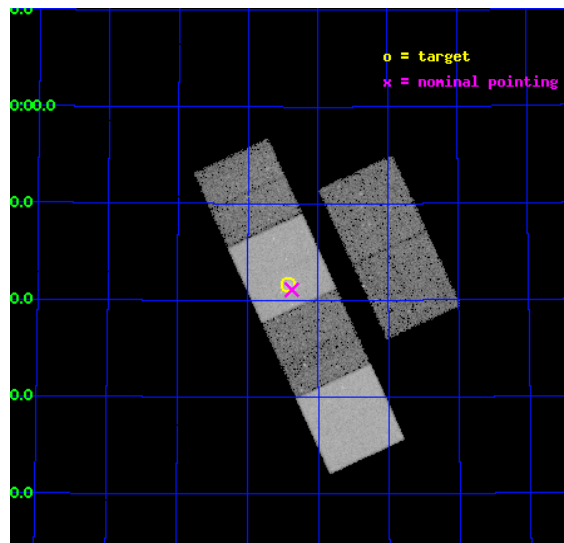
L2 Processing Date : Oct 14 2012

Contents

1	Front	2
2	OBI	3
2.1	OBI	3
2.1.1	Images	3
2.1.2	Bias	3
2.1.3	Parameters	4
2.1.4	Events	4
2.2	Compared Parameters	5
2.3	Aspect	6
2.4	Star Slots	9
2.4.1	Slot 3	9
2.4.2	Slot 4	10
2.4.3	Slot 5	11
2.4.4	Slot 6	12
2.4.5	Slot 7	13
2.5	FID Slots	14
2.5.1	Slot 0	14
2.5.2	Slot 1	15
2.5.3	Slot 2	16
A	Summary	17
A.1	Status	17
A.2	Comments	17

1 Front

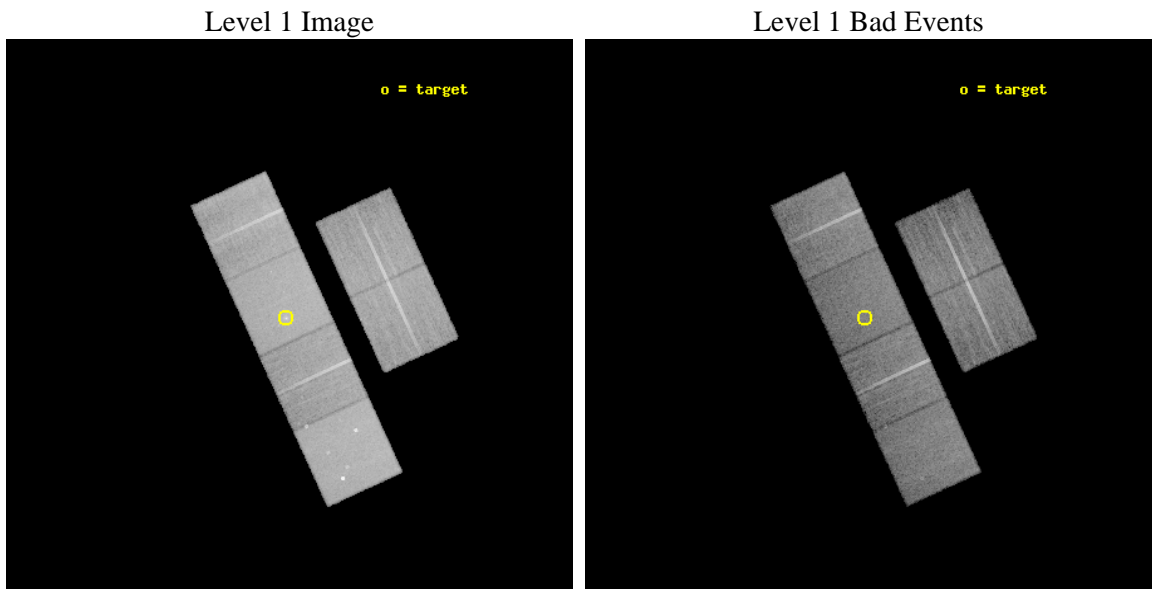
seq_num	700522	Sequence number
obs_id	3083	Observation id
title	ACIS-S IMAGING-SPECTROSCOPY OF THREE INTERMEDIATE FRI/FRII RADIO GALAXIES	Proposal title
observer	Prof Christopher Reynolds	Principal investigator
object	3C401	Source name
dtcycle	0	
cycle	P	events from which exps? Prim/Second/Both
ra_targ	295.104583	Observer's specified target RA [deg]
dec_targ	60.693056	Observer's specified target Dec [deg]
ra_nom	295.09326473753	Nominal RA [deg]
dec_nom	60.685093795717	Nominal Dec [deg]
roll_nom	245.2664926197	Nominal Roll [deg]
revision	3	Processing version of data
ontime	22953.555136144	Sum of GTIs [s]
livetime	22662.903400039	Livetime [s]
ontime2	22953.596176147	Sum of GTIs [s]
ontime3	22953.432016134	Sum of GTIs [s]
ontime5	22953.514096141	Sum of GTIs [s]
ontime6	22953.473056138	Sum of GTIs [s]
ontime7	22953.555136144	Sum of GTIs [s]
ontime8	22950.150035828	Sum of GTIs [s]
l2events	237618	Number of level 2 events



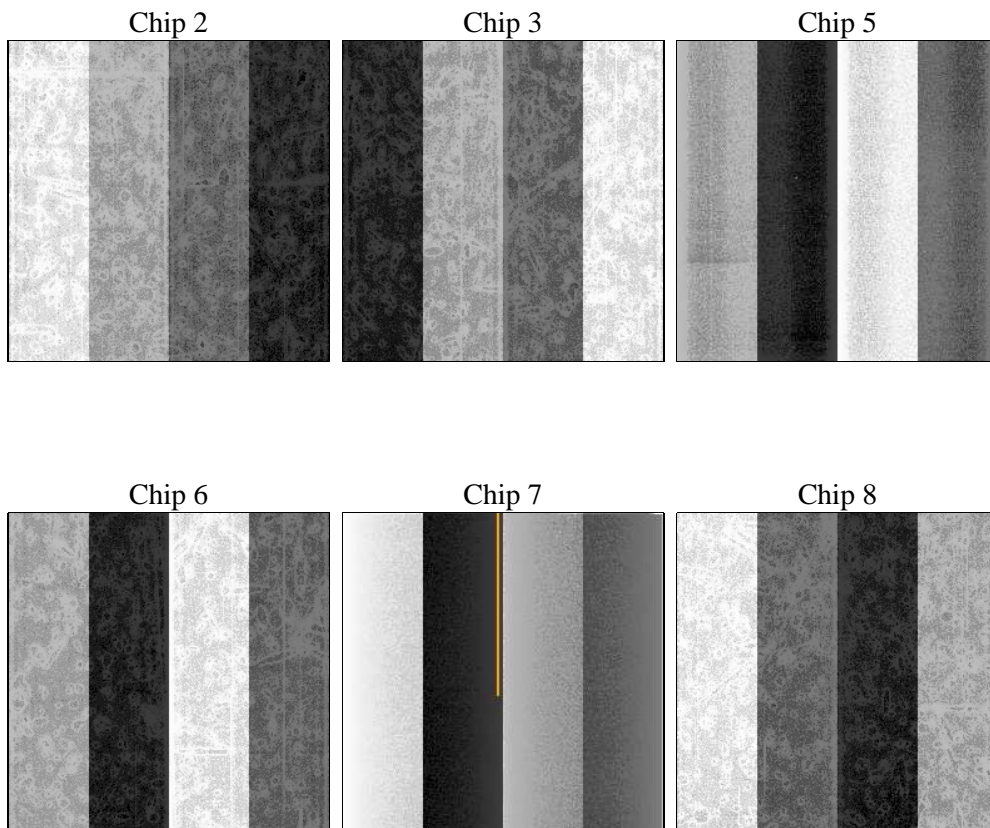
2 OBI

2.1 OBI

2.1.1 Images



2.1.2 Bias



2.1.3 Parameters

obi_num	0	Obi number	sched_exp_time	23200.000000	[s] Scheduled observation exposure time
ascdsver	8.4.5	Processing system revision	ontime	22953.555136144	Sum of GTIs [s]
caldsver	4.5.2	 	ontime2	22953.596176147	Sum of GTIs [s]
date	2012-10-14T20:00:26	Date and time of file creation	ontime3	22953.432016134	Sum of GTIs [s]
revision	3	Processing version of data	ontime5	22953.514096141	Sum of GTIs [s]
			ontime6	22953.473056138	Sum of GTIs [s]
			ontime7	22953.555136144	Sum of GTIs [s]
			ontime8	22950.150035828	Sum of GTIs [s]
			l1events	1009483	Number of level 1 events

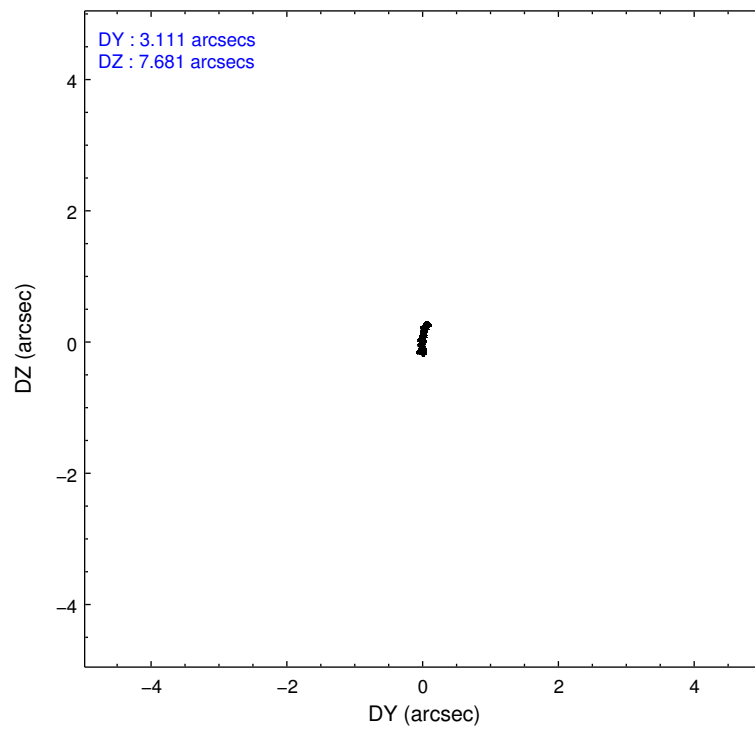
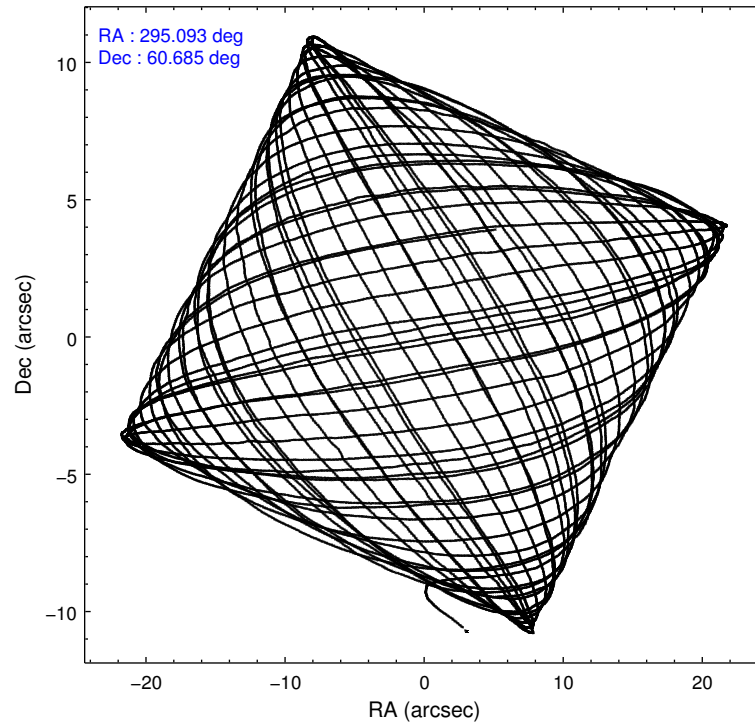
2.1.4 Events

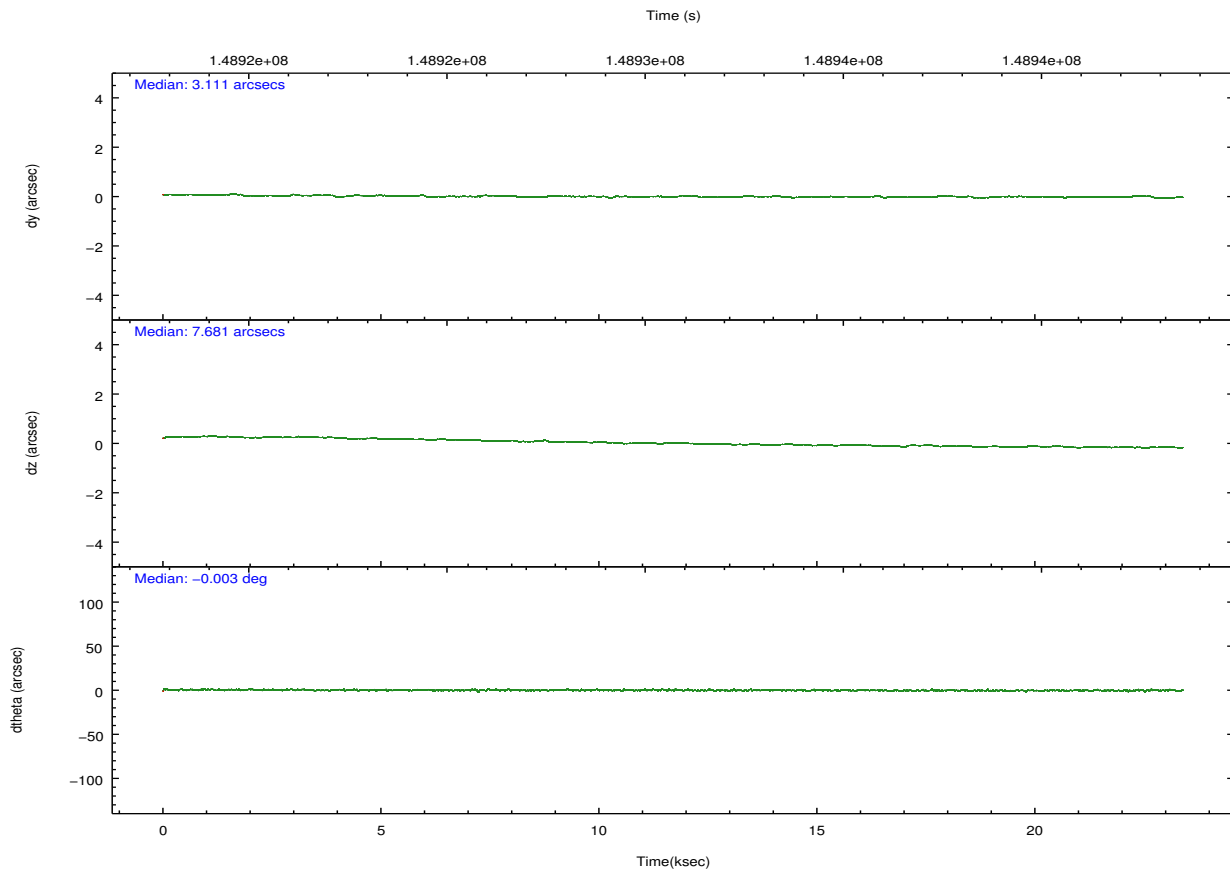
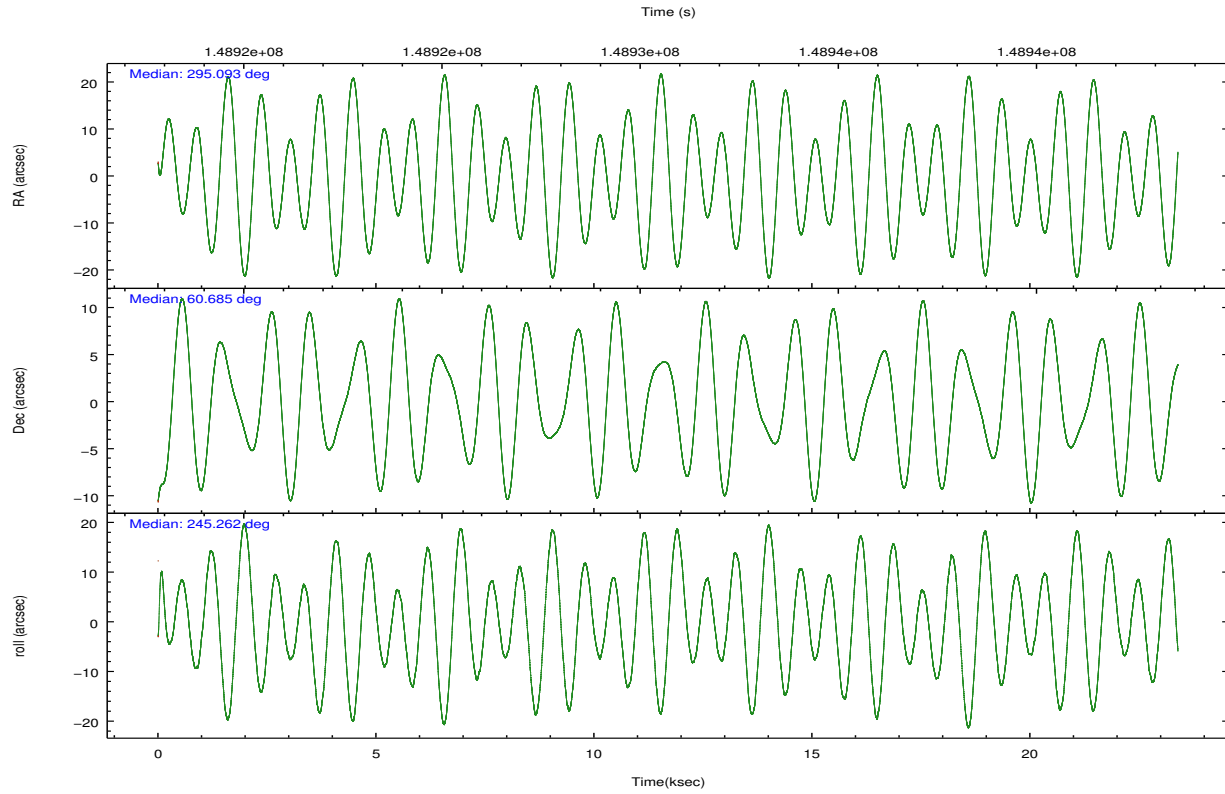
	ccd 2	ccd 3	ccd 5	ccd 6	ccd 7	ccd 8		ccd 2	ccd 3	ccd 5	ccd 6	ccd 7	ccd 8
level 1 events	143617	138514	214884	139628	196301	176539	grade 0 events	7325	7286	13678	7177	9201	11612
rejected events	127151	122294	112469	122447	110388	139950		5%	5%	6%	5%	4%	6%
rejected %	88%	88%	52%	87%	56%	79%	grade 1 events	84	87	468	69	196	121
								0%	0%	0%	0%	0%	0%
							grade 2 events	3288	3032	29040	3446	17098	7986
								2%	2%	13%	2%	8%	4%
							grade 3 events	1629	1546	4419	1716	7834	3814
								1%	1%	2%	1%	3%	2%
							grade 4 events	1540	1580	4228	1607	7642	3569
								1%	1%	1%	1%	3%	2%
							grade 5 events	5460	5933	15409	6368	18071	8182
								3%	4%	7%	4%	9%	4%
							grade 6 events	2689	2778	51072	3237	44163	9618
								1%	2%	23%	2%	22%	5%
							grade 7 events	121602	116272	96570	116008	92096	131637
								84%	83%	44%	83%	46%	74%

2.2 Compared Parameters

Parameter	Planned	Actual	Parameter	Planned	Actual
Instrument	ACIS	ACIS	Obspar format version number	7	7
Detector	ACIS-235678	ACIS-235678	Obspar file type	PREDICTED	ACTUAL
Grating	NONE	NONE	Obspar update status	NONE	UPDATED
Data mode	FAINT	FAINT	Number of optional ACIS chips dropped	0	0
Observation mode	POINTING	POINTING	On-chip summing requested	N	N
[deg] Pointing RA	295.087436	295.0932647375262	Subarray requested	NONE	NONE
[deg] Pointing Dec	60.712207	60.68509379571704	Alternating exposures requested	N	N
[deg] Pointing Roll	245.114952	245.2664926196966	[s] Primary exposure time	0.000000	3.2
[mm] SIM focus pos	-0.684267	-0.6828225247311905			
[mm] SIM defocus	0	0.001444936568705701			
[mm] SIM translation stage pos	-190.132523	-190.1400660498719			
[mm] SIM translation stage offset	0	0.00754346686406393			
[s] Observation start time (MET)	148919204.184000	148918348.13678			
Observation start date	2002-09-20T14:25:40	2002-09-20T14:12:28			
[s] Observation end time (MET)	148942404.184000	148943191.06281			
Observation end date	2002-09-20T20:52:20	2002-09-20T21:06:31			
Read mode	TIMED	TIMED			

2.3 Aspect



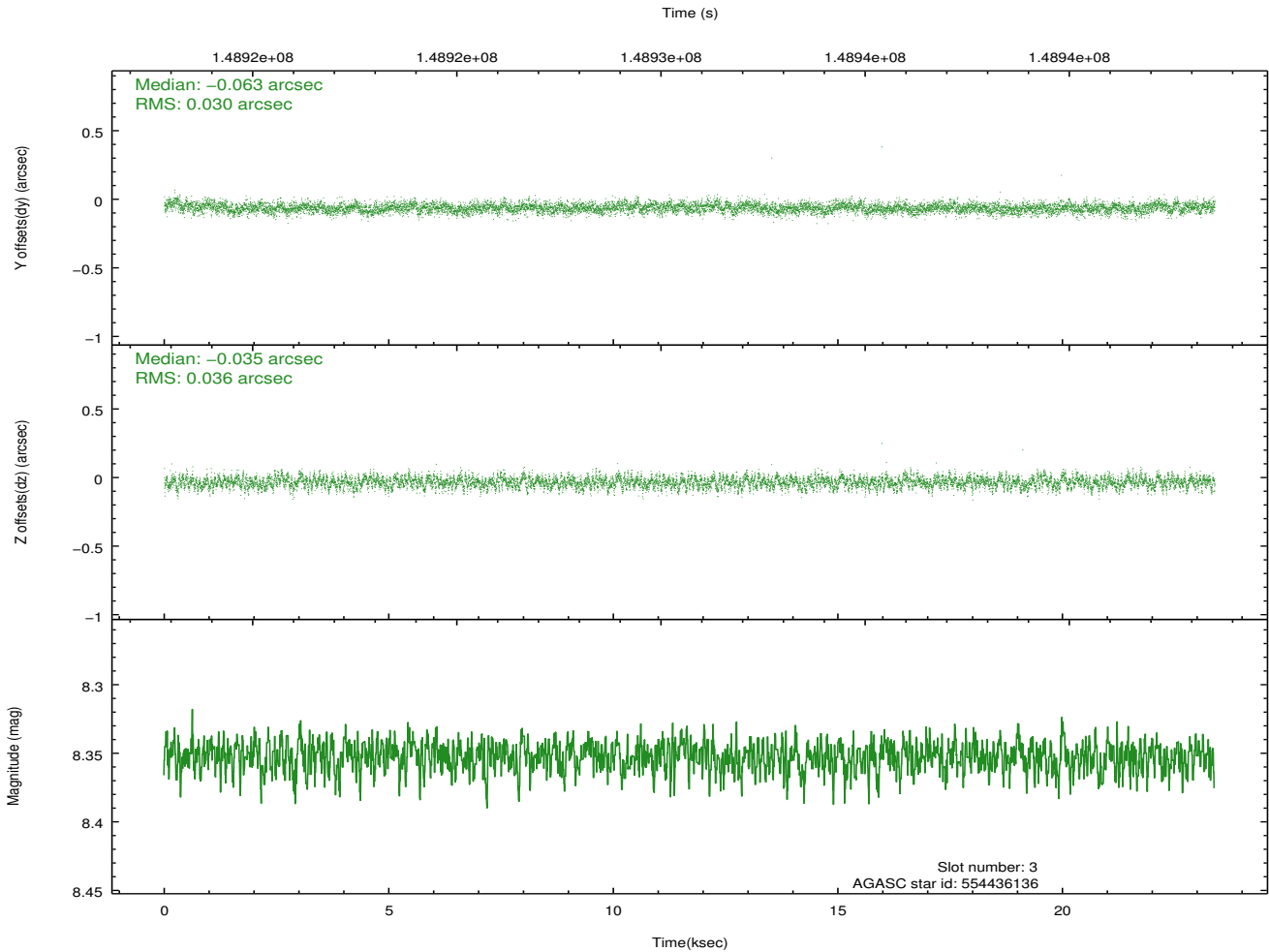
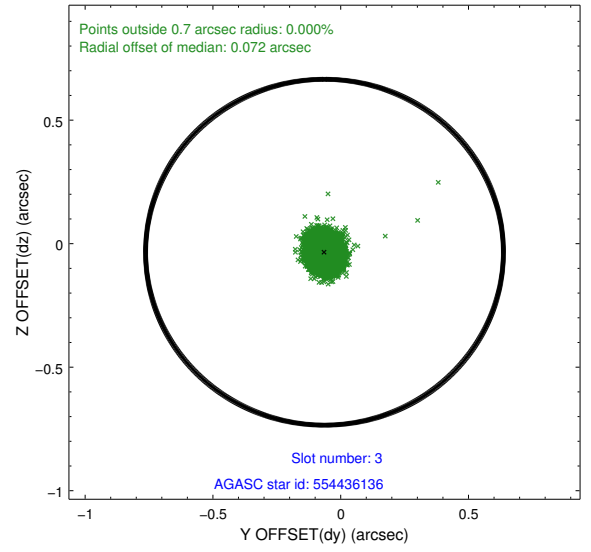
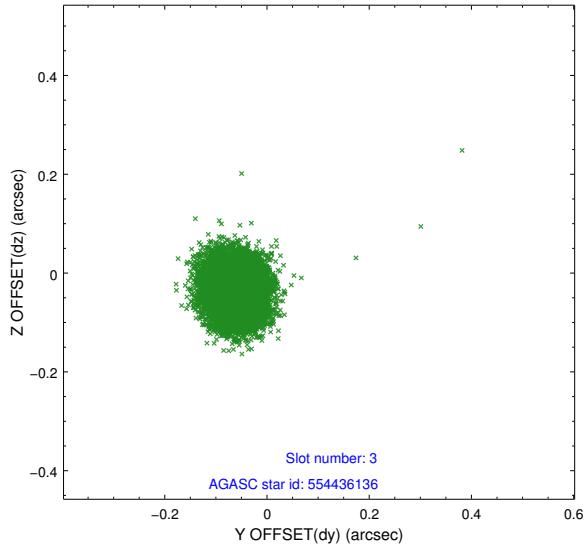


Slot Statistics

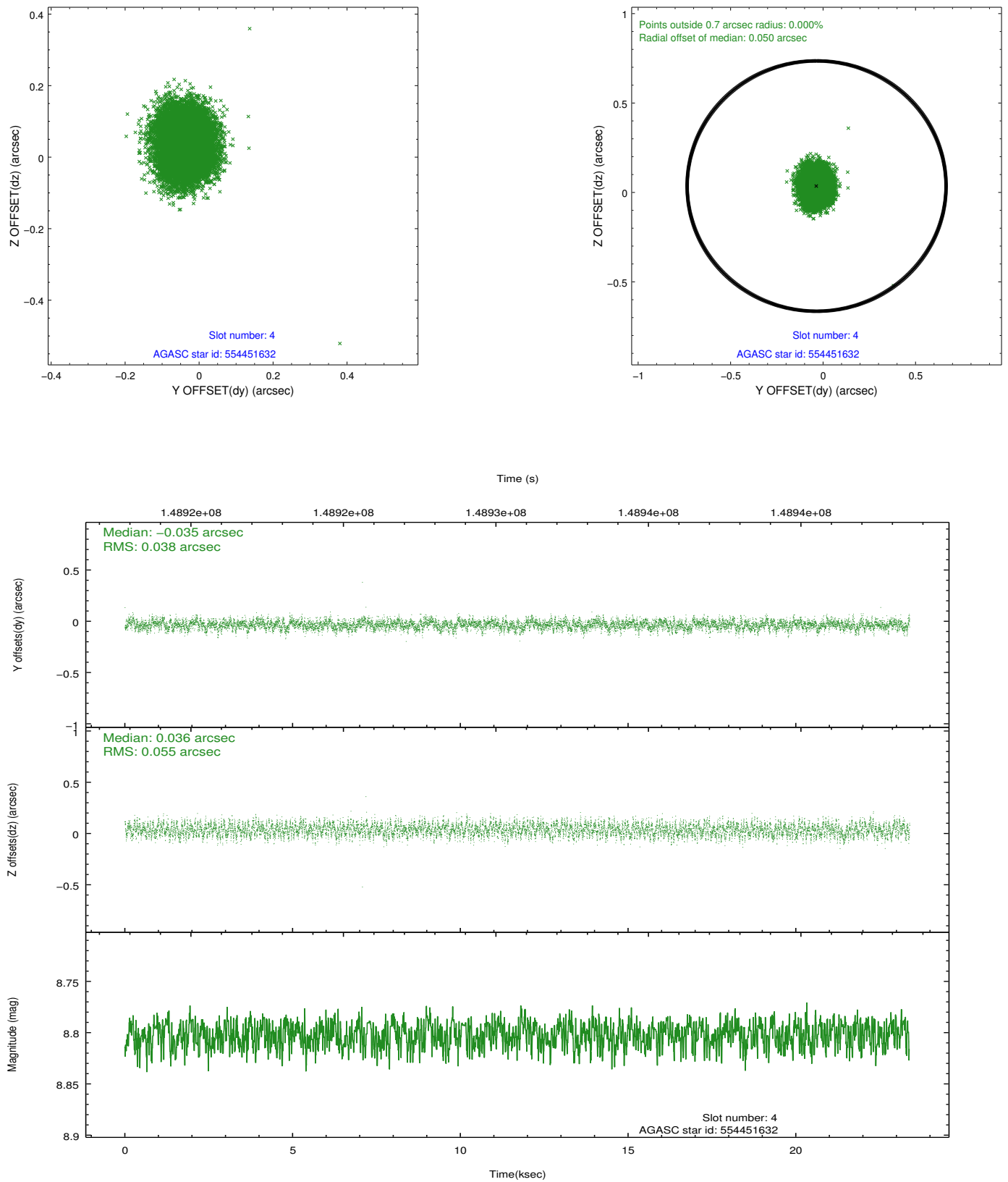
slot	status	id	mag	n_pts	med_dy	med_dz	dr1	dr2	ra	dec	mean_y	mean_z
0	FID	ACIS-S-2	7.11	5705	0.048	0.006	0.010	0.017	0.000000	0.000000	-755.75	-1728.87
1	FID	ACIS-S-3	7.35	5704	-0.107	-0.056	0.014	0.022	0.000000	0.000000	57.16	-1858.32
2	FID	ACIS-S-4	7.20	5705	0.032	0.054	0.006	0.011	0.000000	0.000000	2157.63	179.43
3	GUIDE	554436136	8.35	11407	-0.063	-0.035	0.049	0.080	295.312888	60.232943	1394.76	1092.12
4	GUIDE	554451632	8.80	11409	-0.035	0.036	0.072	0.112	294.210908	61.288730	-1253.95	-2252.00
5	GUIDE	554448992	8.67	11408	-0.027	0.007	0.061	0.097	295.034810	61.081791	-1168.61	-642.54
6	GUIDE	554446792	8.82	11406	0.032	-0.030	0.078	0.124	295.560016	60.563175	131.92	983.66
7	GUIDE	554448584	9.49	11380	0.095	0.025	0.094	0.151	293.991372	60.316559	2099.60	-1179.01

2.4 Star Slots

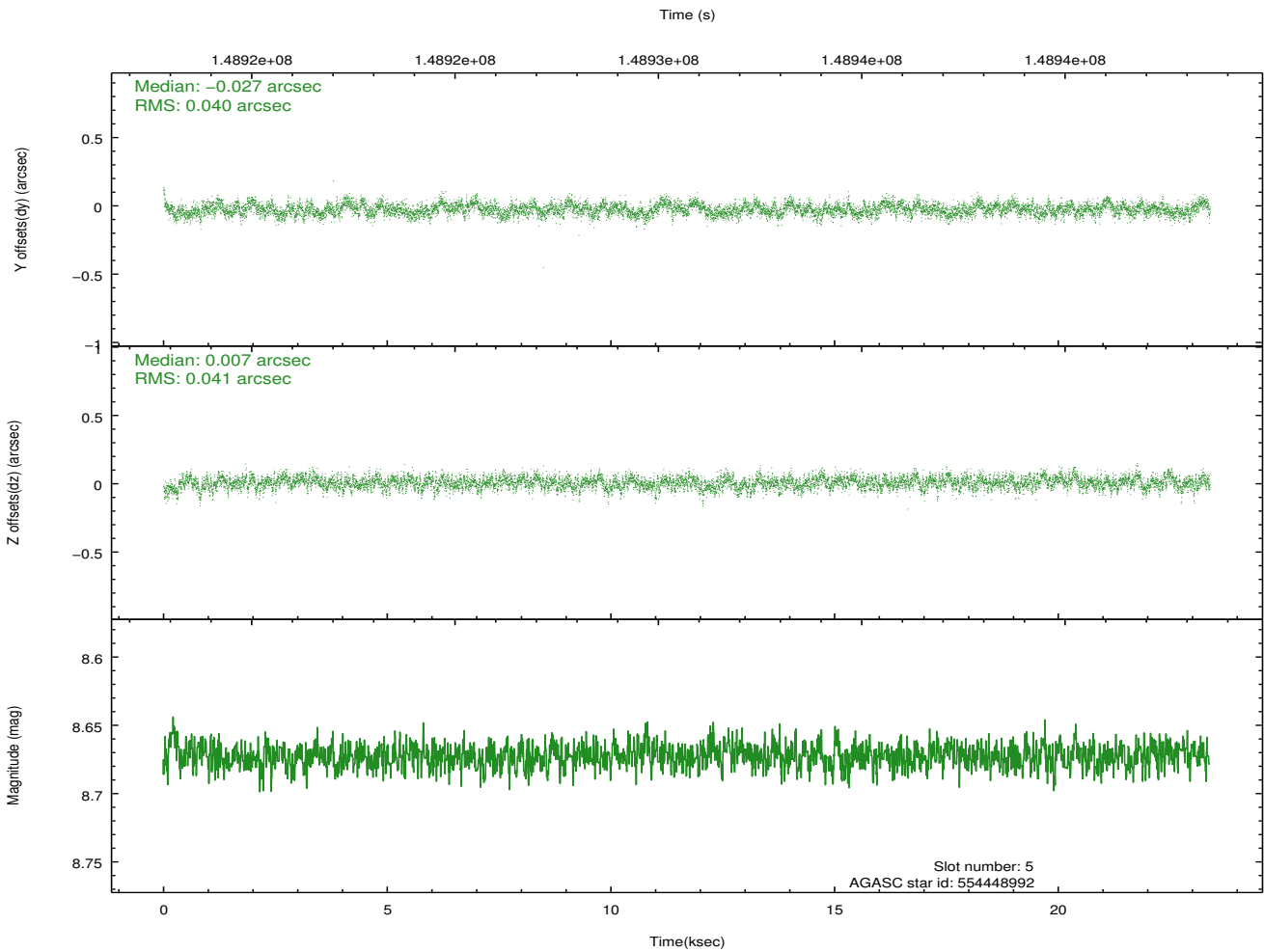
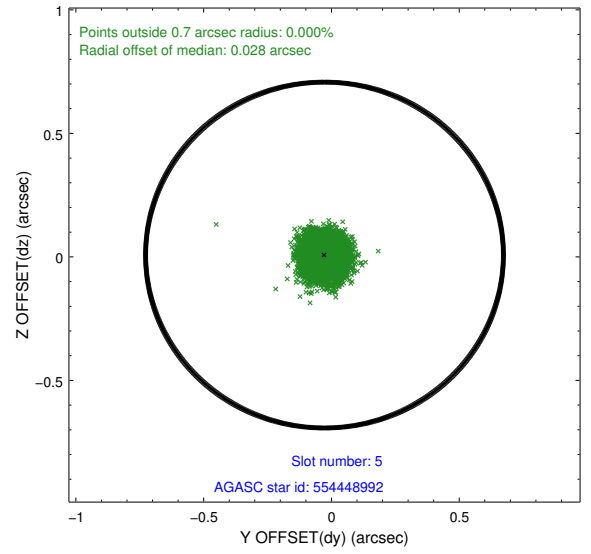
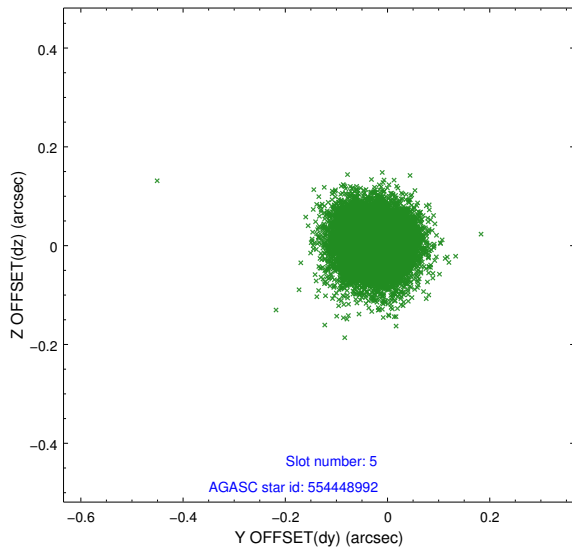
2.4.1 Slot 3



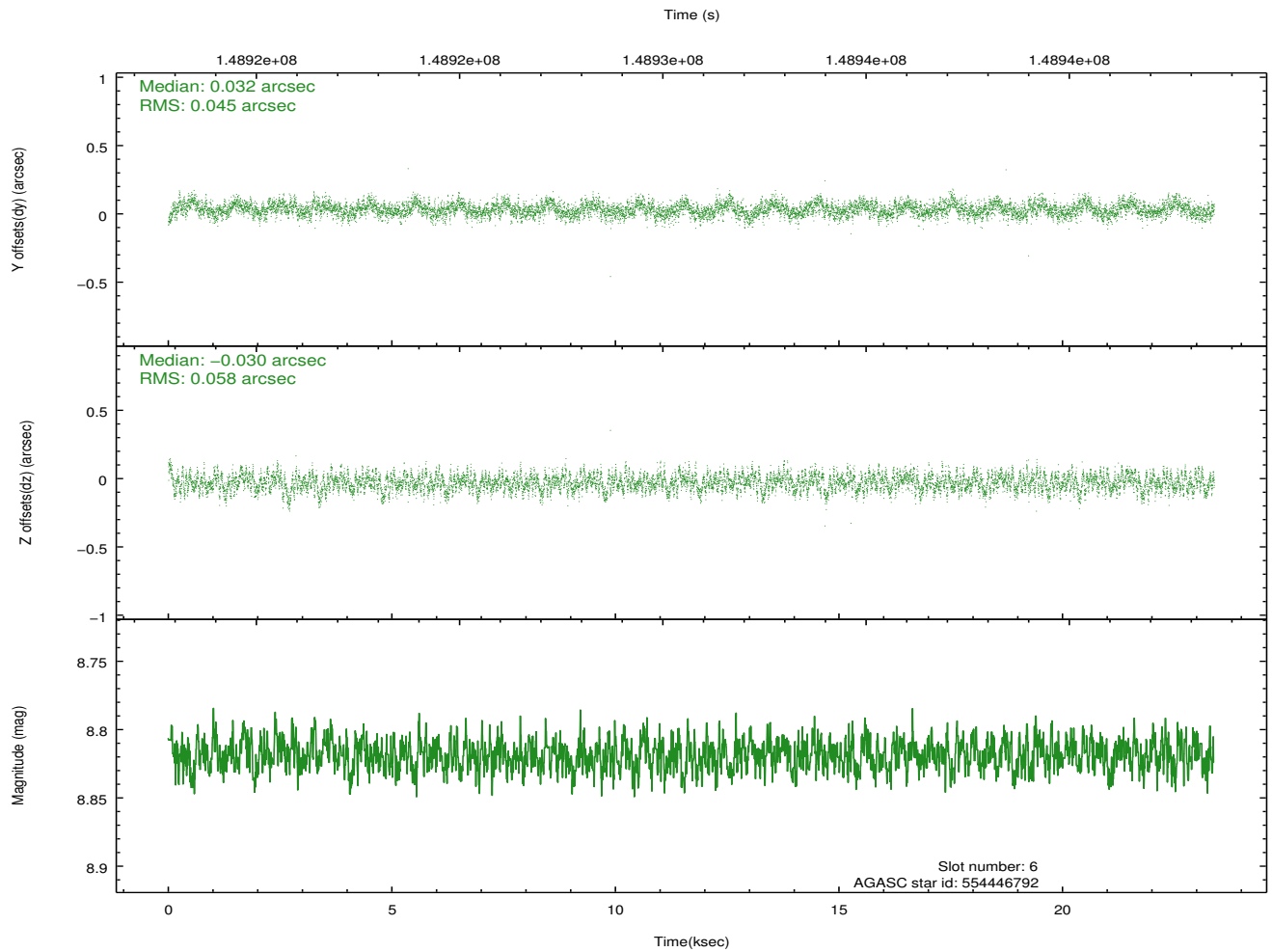
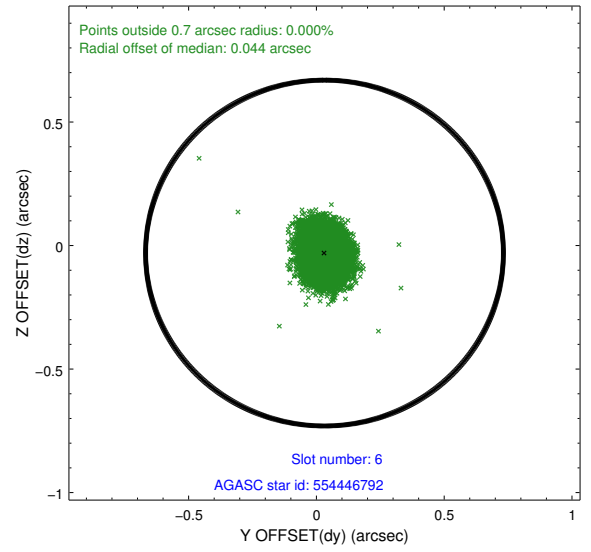
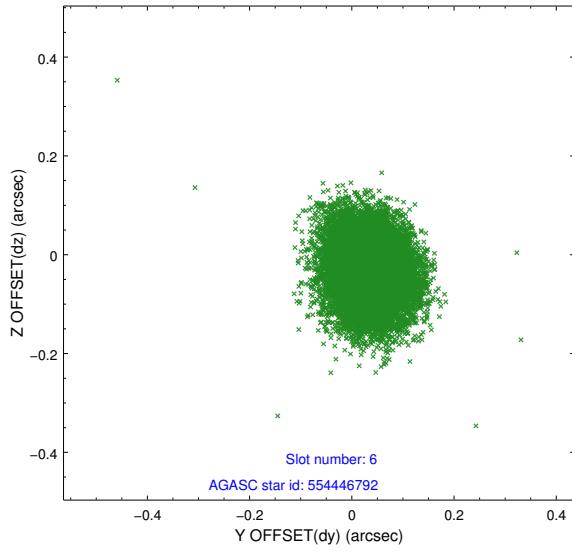
2.4.2 Slot 4



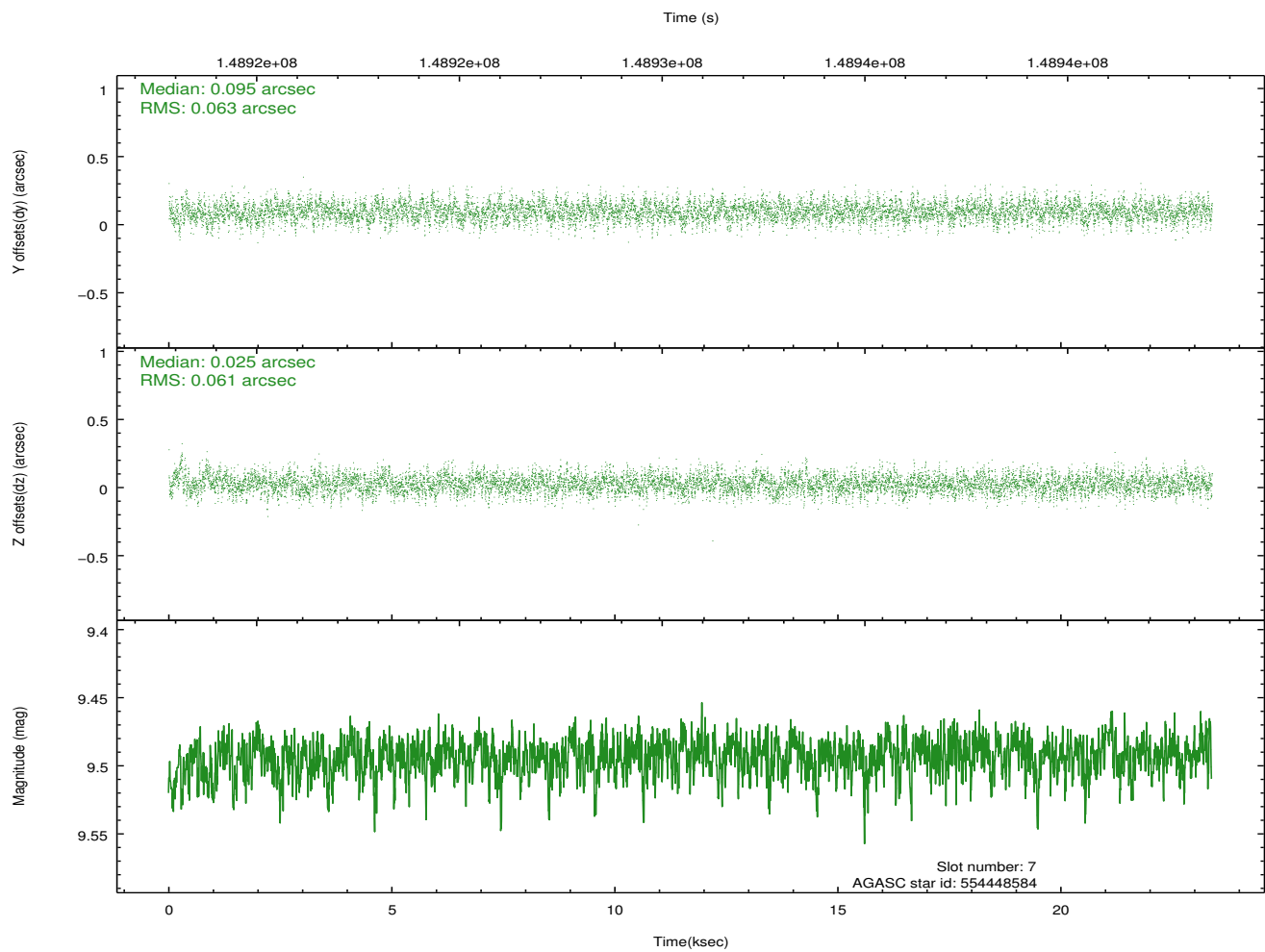
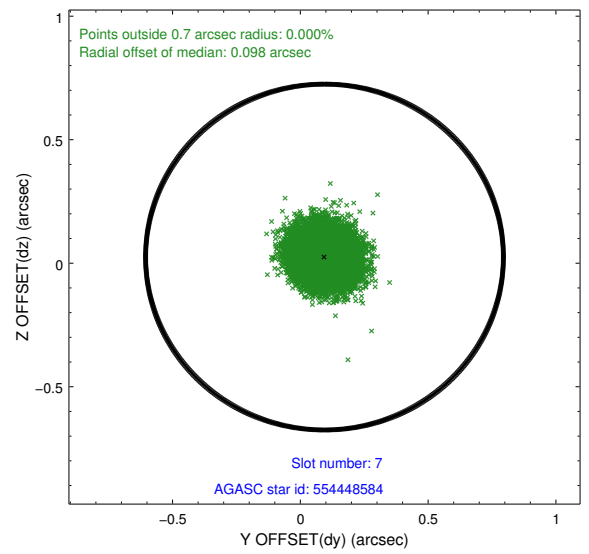
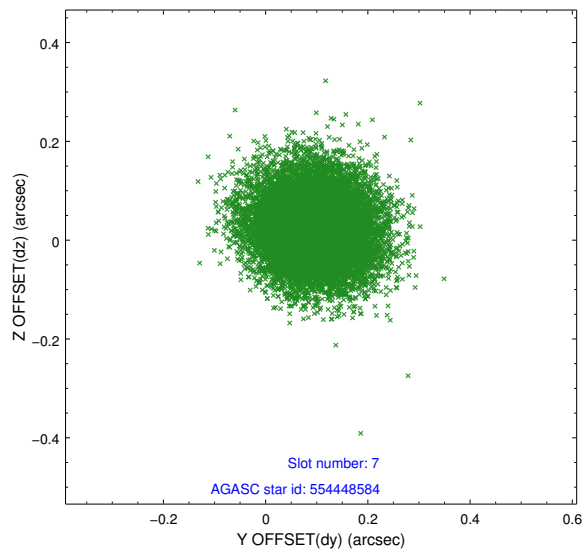
2.4.3 Slot 5



2.4.4 Slot 6

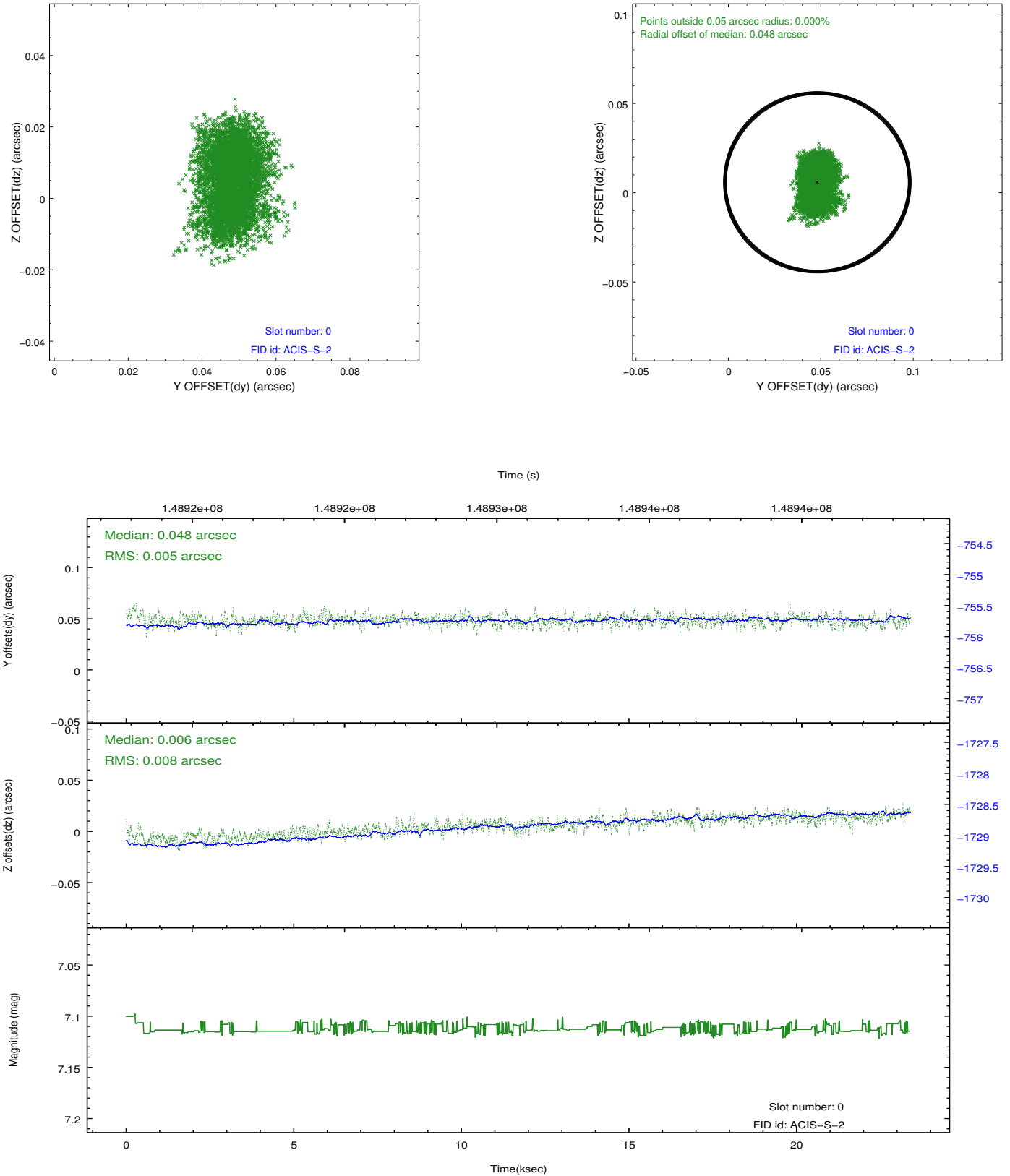


2.4.5 Slot 7

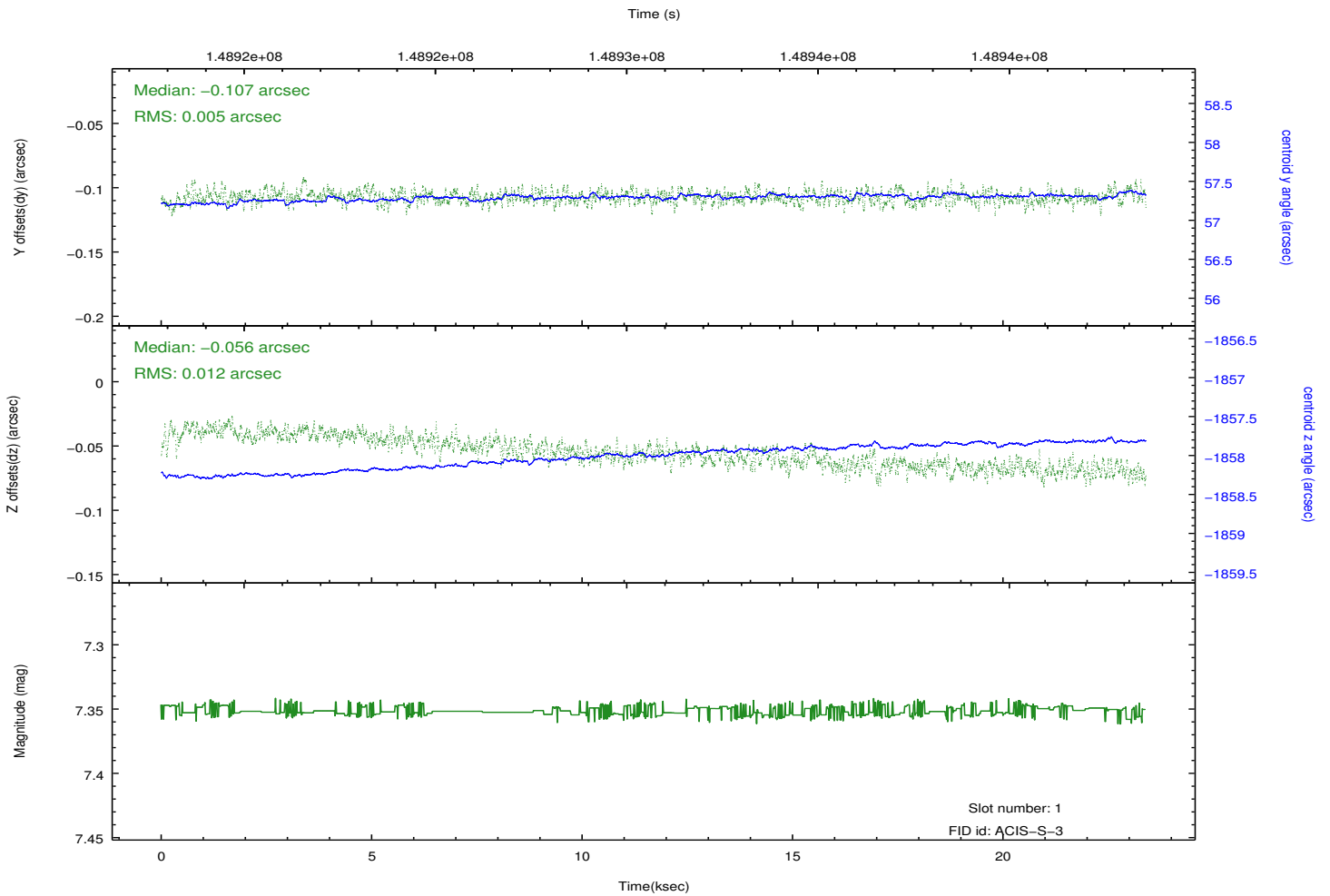
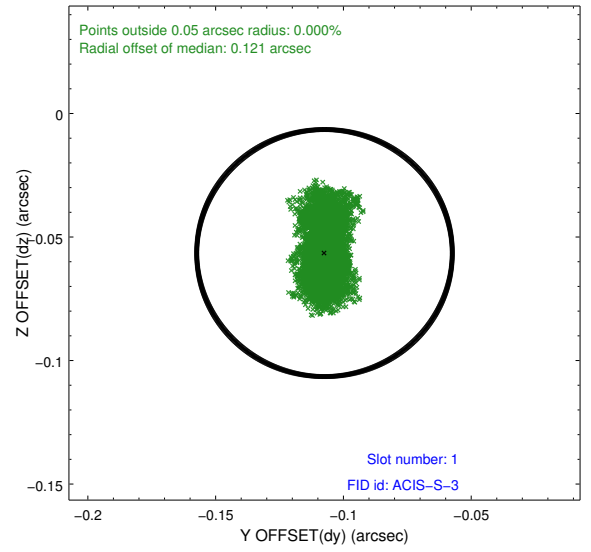
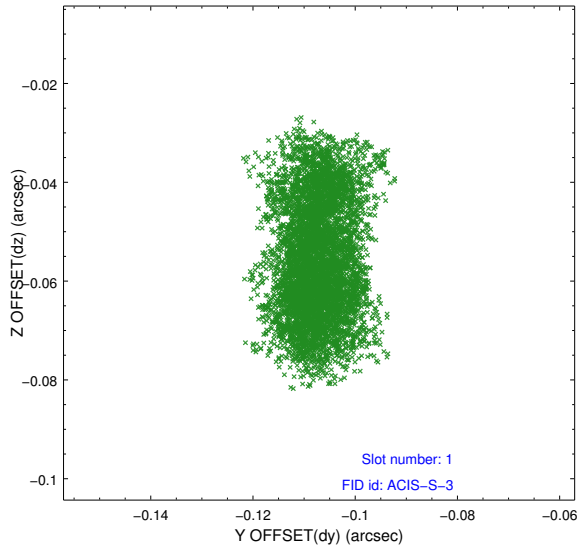


2.5 FID Slots

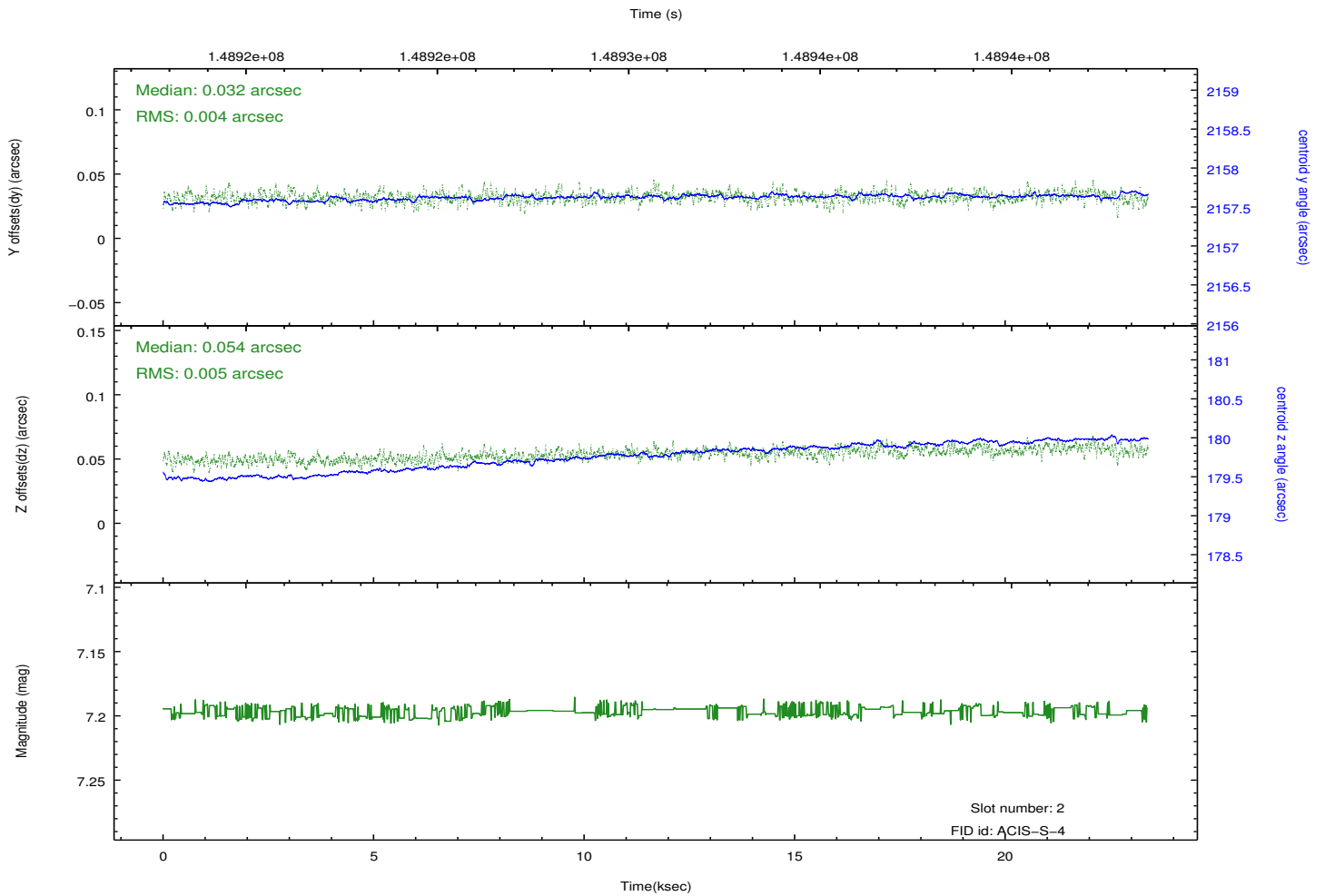
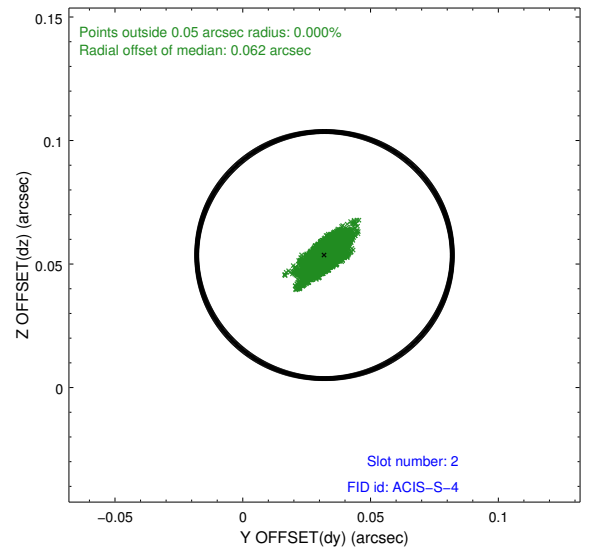
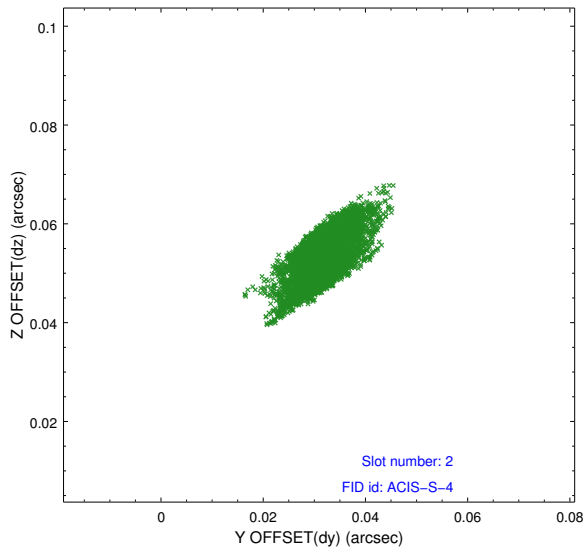
2.5.1 Slot 0



2.5.2 Slot 1



2.5.3 Slot 2



A Summary

A.1 Status

V&V Scientist	Beth Sundheim
V&V Date (YYYY-MM-DD)	2012.10.24
V&V Edition	1
V&V Disposition and Status	OK
V&V Charge Time	22.956

A.2 Comments