

V&V Reference Report

L2 ASCDS Version : 8.4.5

Observation 3183 - L2 Version 4
Chandra X-Ray Center

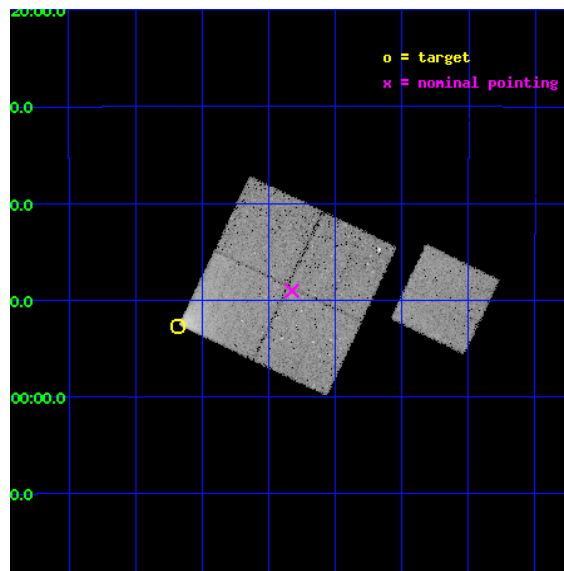
L2 Processing Date : Oct 10 2012

Contents

1	Front	2
2	OBI	3
2.1	OBI	3
2.1.1	Images	3
2.1.2	Bias	3
2.1.3	Parameters	4
2.1.4	Events	4
2.2	Compared Parameters	5
2.3	Aspect	6
2.4	Star Slots	9
2.4.1	Slot 3	9
2.4.2	Slot 4	10
2.4.3	Slot 5	11
2.4.4	Slot 6	12
2.4.5	Slot 7	13
2.5	FID Slots	14
2.5.1	Slot 0	14
2.5.2	Slot 1	15
2.5.3	Slot 2	16
A	Summary	17
A.1	Status	17
A.2	Comments	17

1 Front

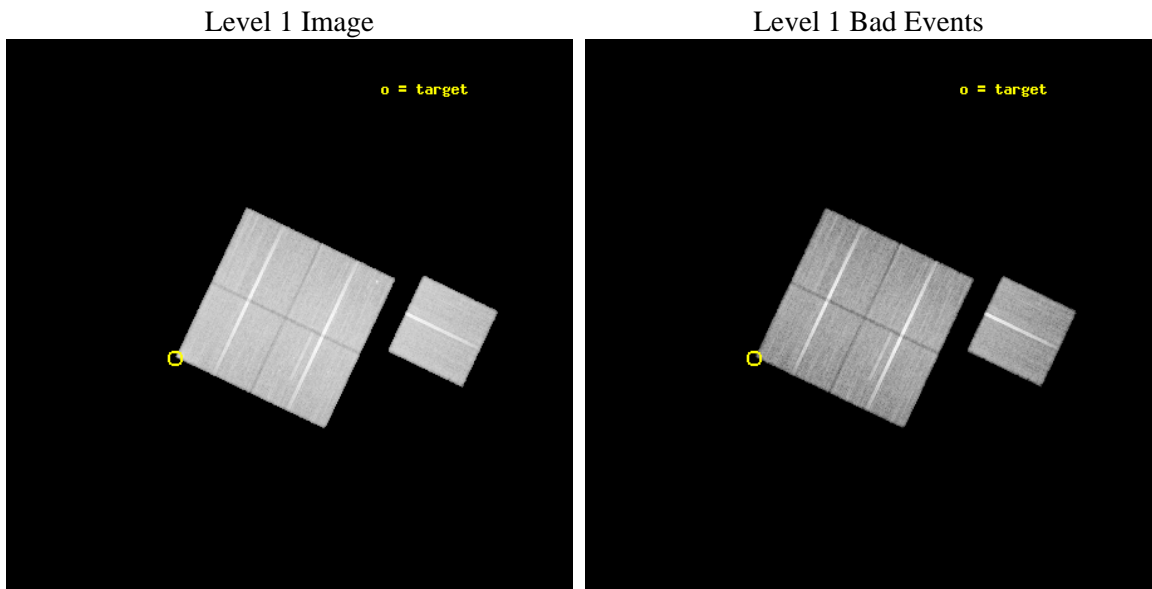
seq_num	800183	Sequence number
obs_id	3183	Observation id
title	DEEP X-RAY IMAGE OF A133	Proposal title
observer	Dr. Stephen Murray	Principal investigator
object	A133 OFFSET	Source name
dtcycle	0	
cycle	P	events from which exps? Prim/Second/Both
ra_targ	15.67	Observer's specified target RA [deg]
dec_targ	-21.878	Observer's specified target Dec [deg]
ra_nom	15.456620805238	Nominal RA [deg]
dec_nom	-21.817555326569	Nominal Dec [deg]
roll_nom	115.47909715015	Nominal Roll [deg]
revision	4	Processing version of data
ontime	45111.117932975	Sum of GTIs [s]
livetime	44521.707966859	Livetime [s]
ontime0	45111.117982745	Sum of GTIs [s]
ontime1	45111.117962867	Sum of GTIs [s]
ontime2	45111.117992759	Sum of GTIs [s]
ontime3	45111.117932975	Sum of GTIs [s]
ontime6	45114.258953005	Sum of GTIs [s]
l2events	115965	Number of level 2 events



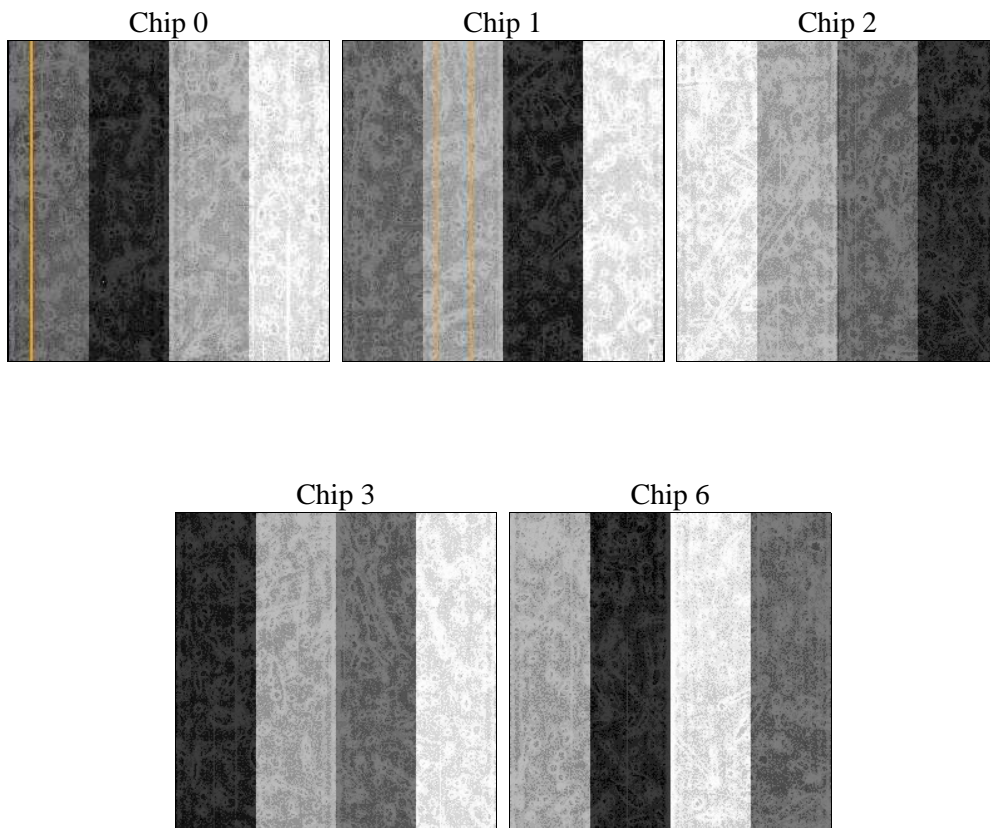
2 OBI

2.1 OBI

2.1.1 Images



2.1.2 Bias



2.1.3 Parameters

obi_num	0	Obi number	sched_exp_time	45000.000000	[s] Scheduled observation exposure time
ascdsver	8.4.5	Processing system revision	ontime	45111.117932975	Sum of GTIs [s]
caldbver	4.5.2	 	ontime0	45111.117982745	Sum of GTIs [s]
date	2012-10-10T03:39:47	Date and time of file creation	ontime1	45111.117962867	Sum of GTIs [s]
revision	4	Processing version of data	ontime2	45111.117992759	Sum of GTIs [s]
			ontime3	45111.117932975	Sum of GTIs [s]
			ontime6	45114.258953005	Sum of GTIs [s]
			l1events	1262818	Number of level 1 events

2.1.4 Events

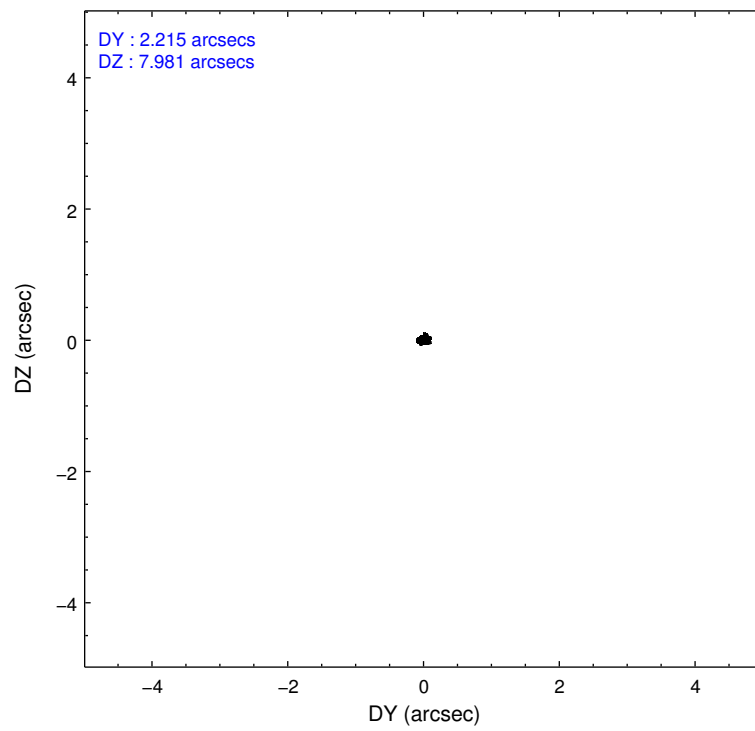
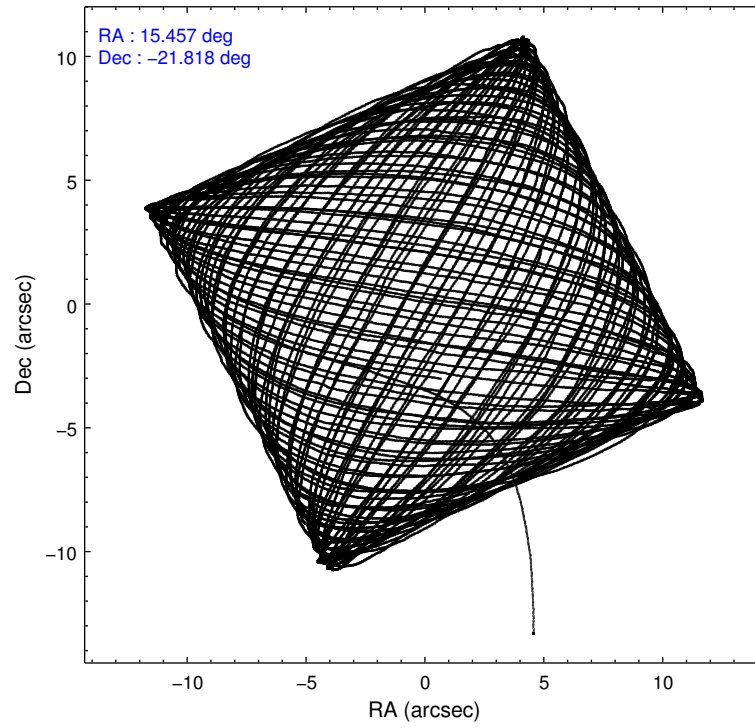
	ccd 0	ccd 1	ccd 2	ccd 3	ccd 6
level 1 events	238257	253456	267753	252924	250428
rejected events	213732	212709	243050	228796	225776
rejected %	89%	83%	90%	90%	90%

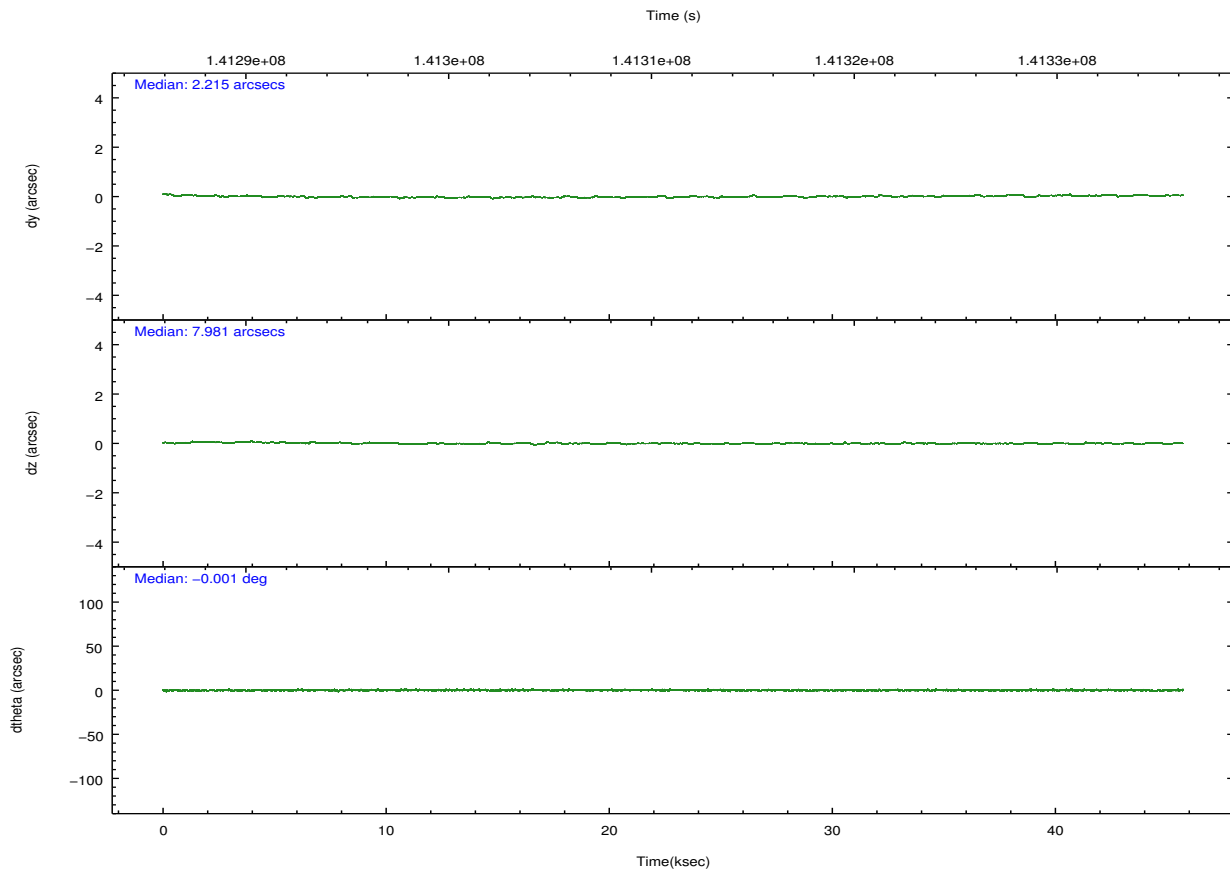
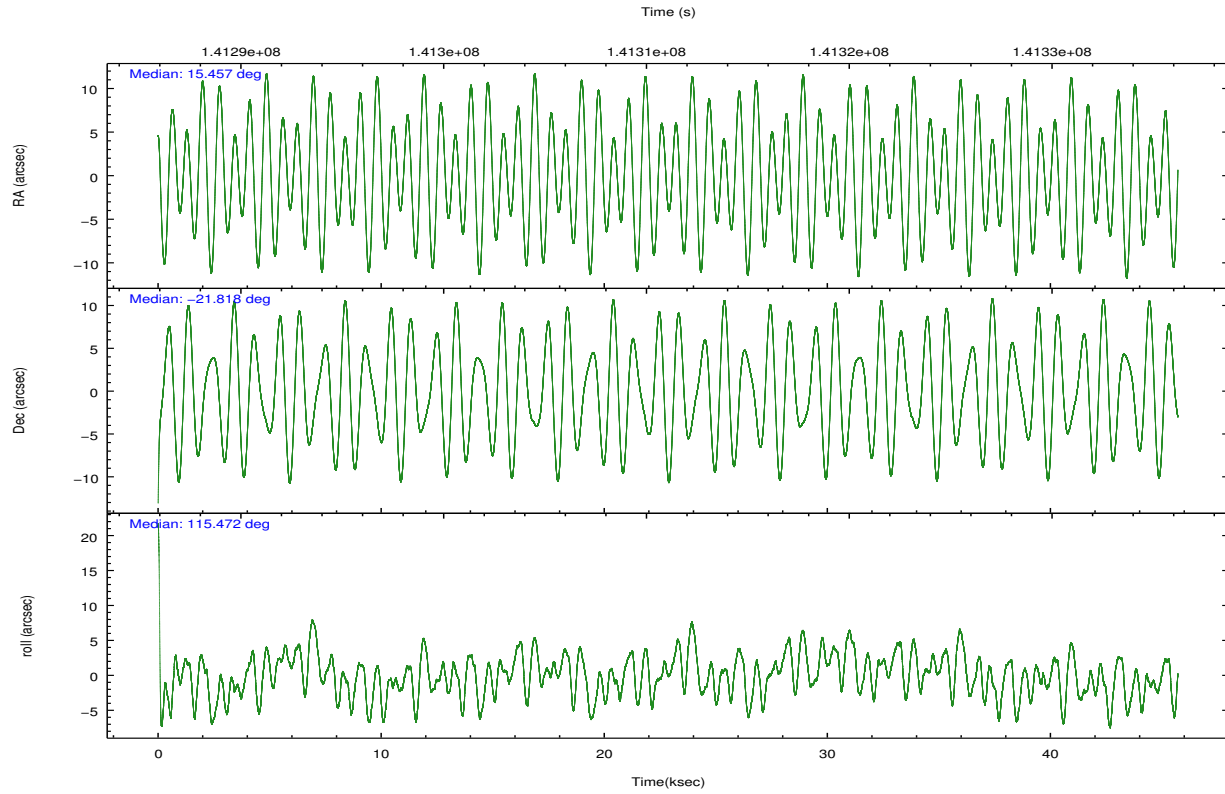
	ccd 0	ccd 1	ccd 2	ccd 3	ccd 6
grade 0 events	8592	20982	9157	9091	8505
	3%	8%	3%	3%	3%
grade 1 events	90	164	92	92	93
	0%	0%	0%	0%	0%
grade 2 events	5670	6946	5562	5009	5283
	2%	2%	2%	1%	2%
grade 3 events	3007	3591	2623	2702	2844
	1%	1%	0%	1%	1%
grade 4 events	2619	3579	2721	2638	2796
	1%	1%	1%	1%	1%
grade 5 events	7930	8852	7583	8901	9166
	3%	3%	2%	3%	3%
grade 6 events	4643	5654	4644	4692	5227
	1%	2%	1%	1%	2%
grade 7 events	205706	203688	235371	219799	216514
	86%	80%	87%	86%	86%

2.2 Compared Parameters

Parameter	Planned	Actual	Parameter	Planned	Actual
Instrument	ACIS	ACIS	Obspar format version number	7	7
Detector	ACIS-01236	ACIS-01236	Obspar file type	PREDICTED	ACTUAL
Grating	NONE	NONE	Obspar update status	NONE	UPDATED
Data mode	VFAINT	VFAINT	Number of optional ACIS chips dropped	0	0
Observation mode	POINTING	POINTING	On-chip summing requested	N	N
[deg] Pointing RA	15.481004	15.45662080523774	Subarray requested	NONE	NONE
[deg] Pointing Dec	-21.833022	-21.81755532656916	Alternating exposures requested	N	N
[deg] Pointing Roll	115.279468	115.4790971501459	[s] Primary exposure time	0.000000	3.1
[mm] SIM focus pos	-0.782348	-0.7809083437167272			
[mm] SIM defocus	0	0.001439871863259334			
[mm] SIM translation stage pos	-233.592463	-233.5874344608287			
[mm] SIM translation stage offset	0	-0.005018542100998502			
[s] Observation start time (MET)	141288926.184000	141287699.96015			
Observation start date	2002-06-24T06:54:22	2002-06-24T06:34:59			
[s] Observation end time (MET)	141333926.184000	141334425.09956			
Observation end date	2002-06-24T19:24:22	2002-06-24T19:33:45			
Read mode	TIMED	TIMED			

2.3 Aspect



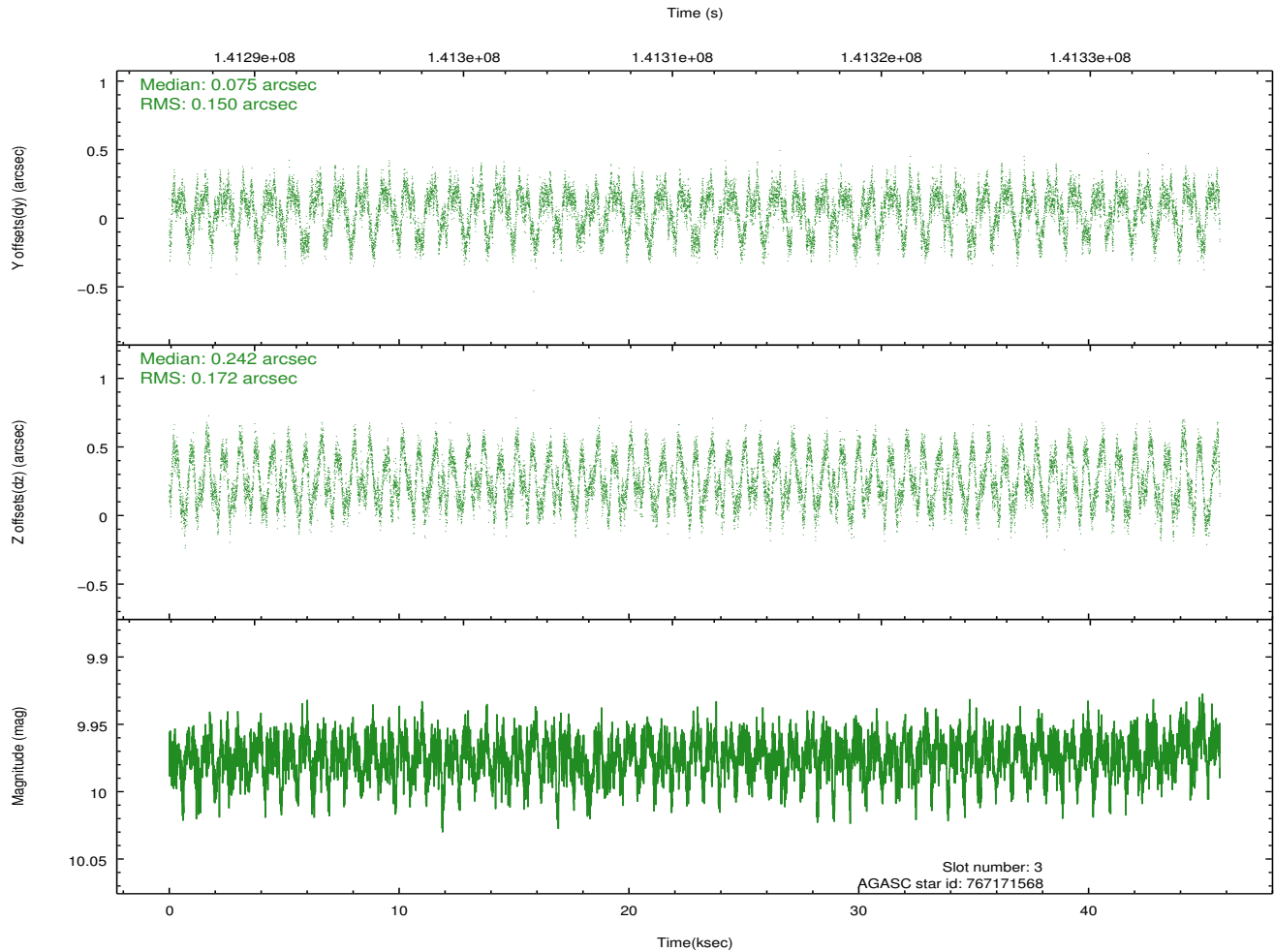
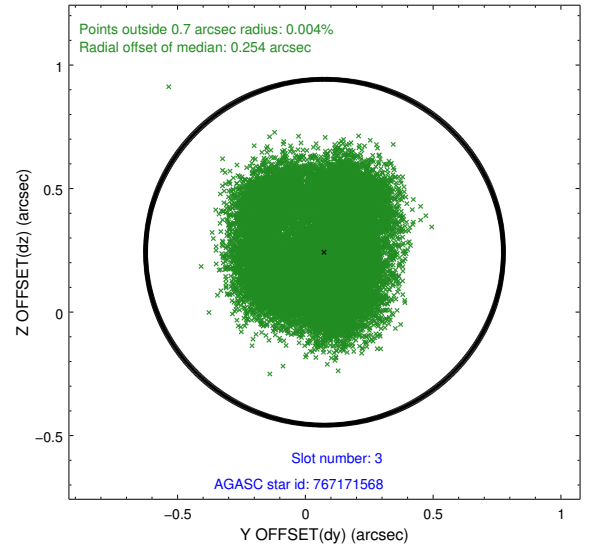
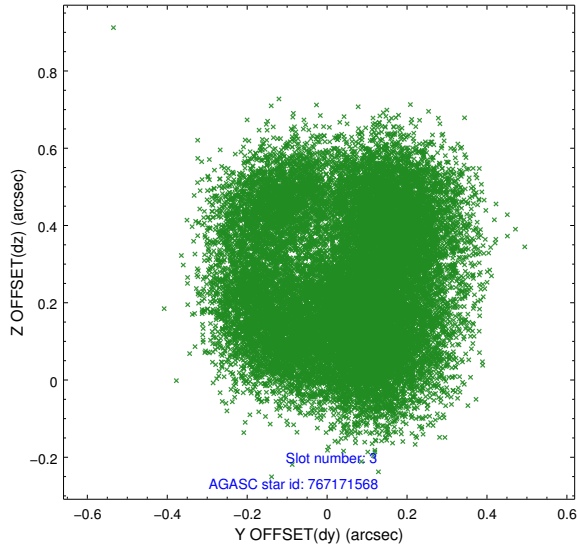


Slot Statistics

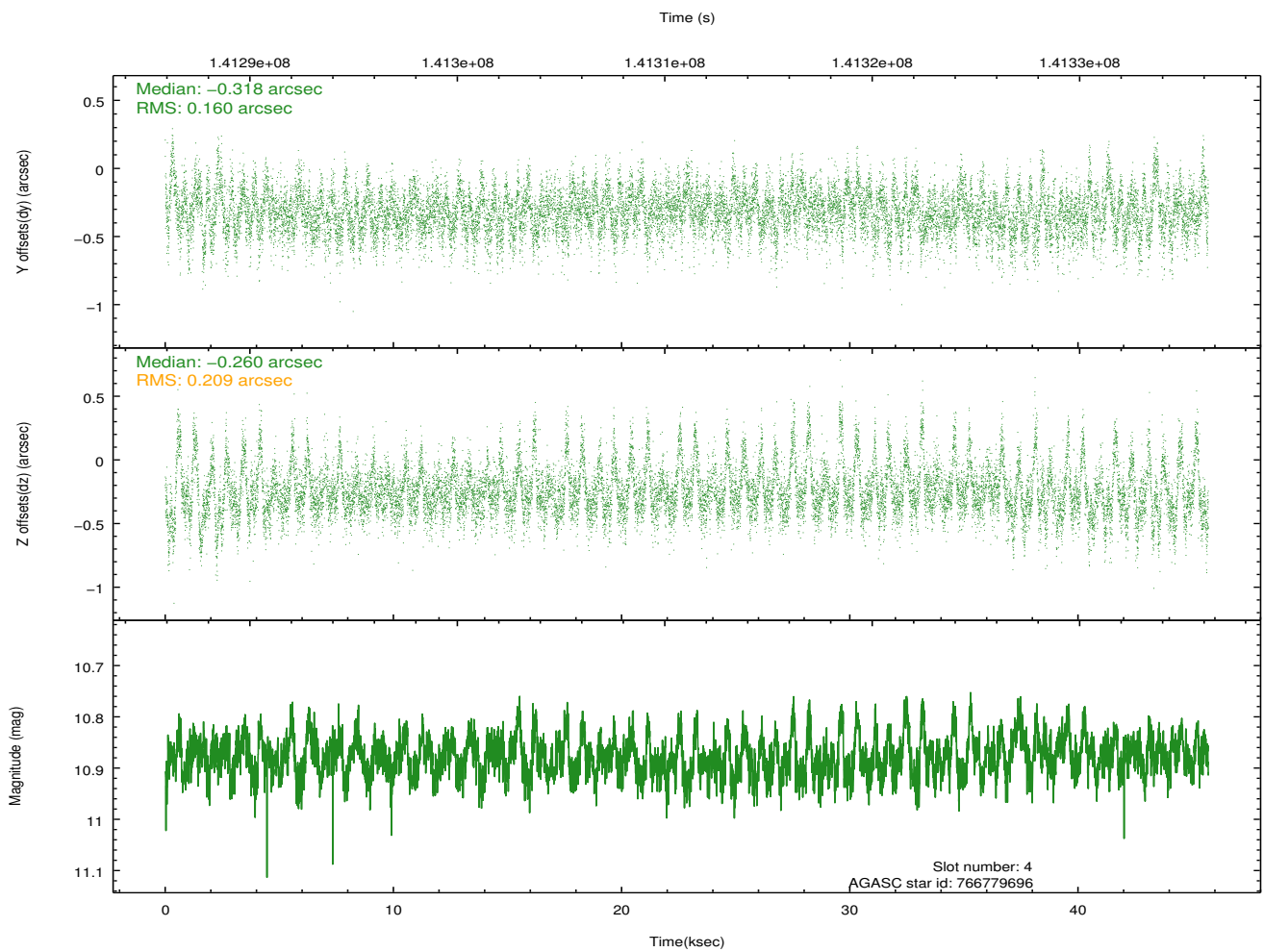
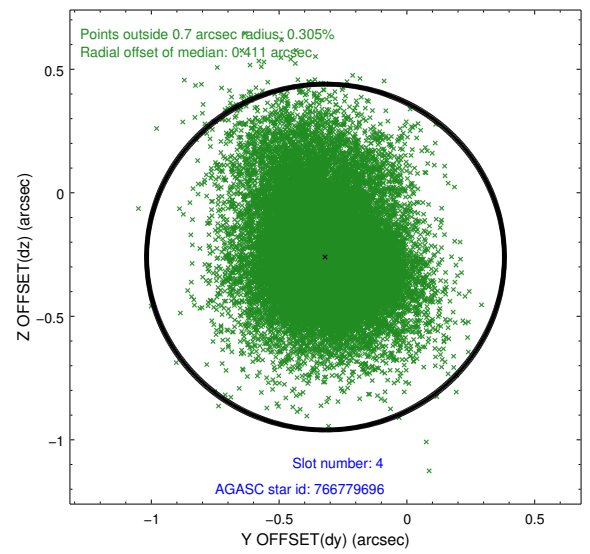
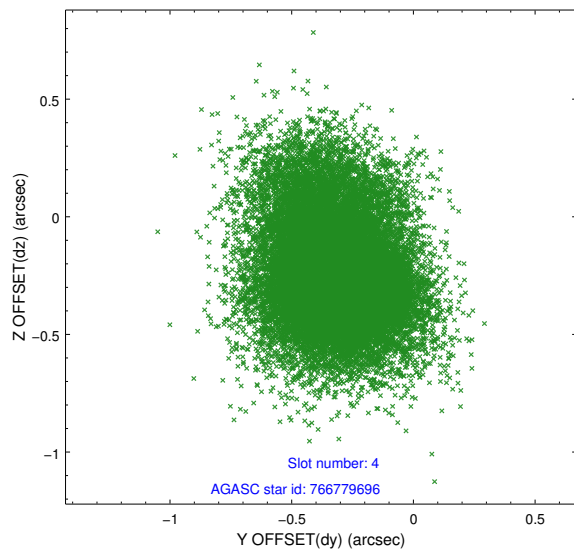
slot	status	id	mag	n_pts	med_dy	med_dz	dr1	dr2	ra	dec	mean_y	mean_z
0	FID	ACIS-I-1	7.24	11148	-0.026	0.061	0.007	0.012	0.000000	0.000000	937.56	-831.36
1	FID	ACIS-I-5	7.24	11149	-0.035	0.037	0.007	0.011	0.000000	0.000000	-1810.54	1066.15
2	FID	ACIS-I-6	7.26	11150	-0.030	-0.027	0.007	0.011	0.000000	0.000000	403.14	1710.55
3	GUIDE	767171568	9.97	22280	0.075	0.242	0.257	0.361	16.035890	-22.108834	-1690.60	-1247.30
4	GUIDE	766779696	10.88	21639	-0.318	-0.260	0.267	0.484	15.056781	-21.415428	1964.52	645.07
5	GUIDE	766777184	7.87	22293	0.493	0.308	0.080	0.120	15.615560	-21.610598	532.26	-748.46
6	GUIDE	766783464	9.21	22290	-0.040	-0.273	0.094	0.156	15.041422	-22.197983	-564.13	1887.21
7	GUIDE	766779344	10.03	22282	-0.189	-0.063	0.132	0.214	15.380905	-21.452302	1382.68	-281.05

2.4 Star Slots

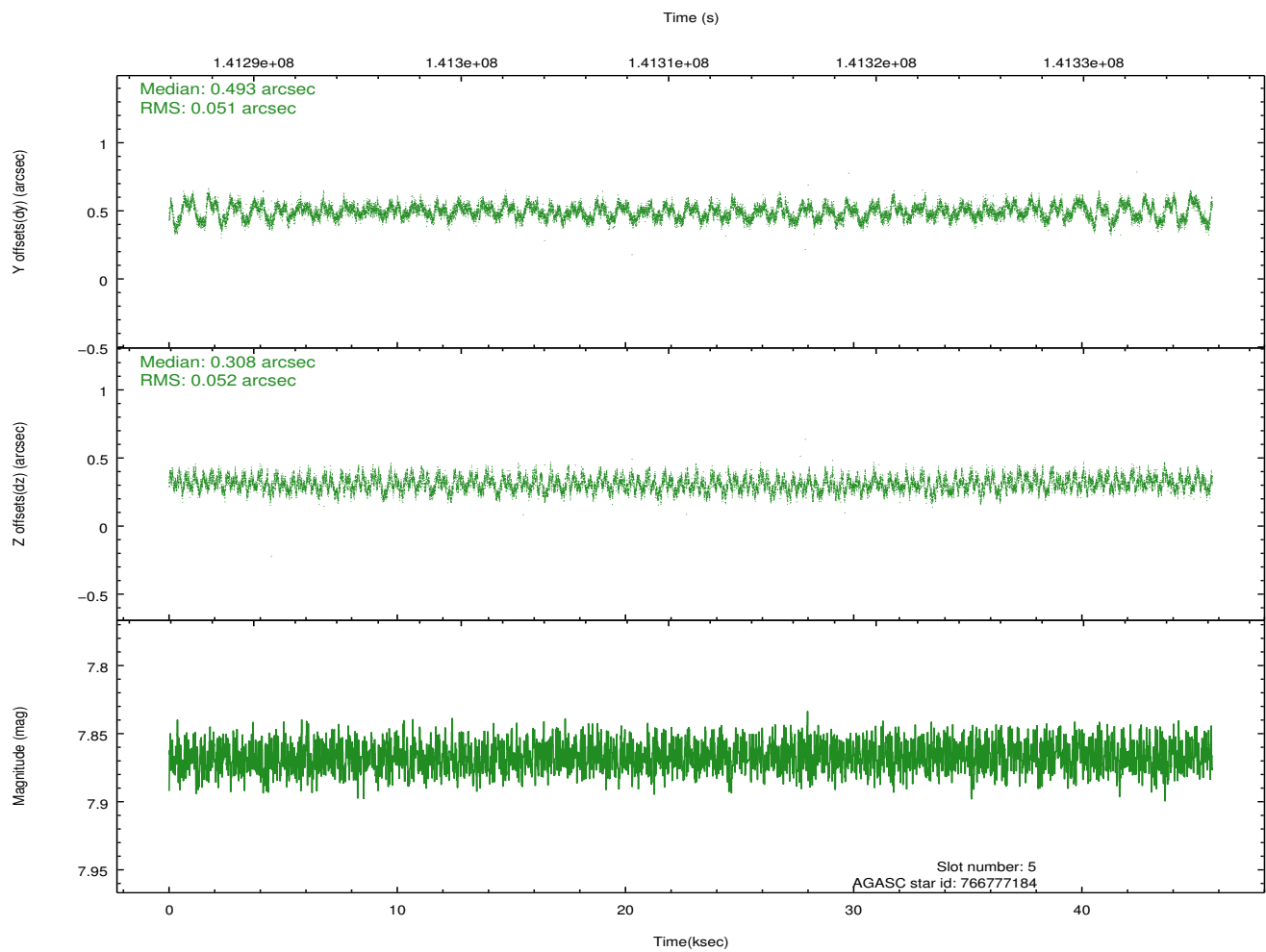
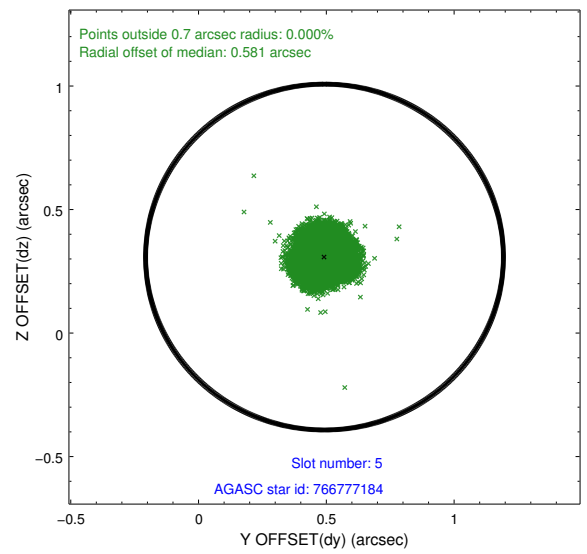
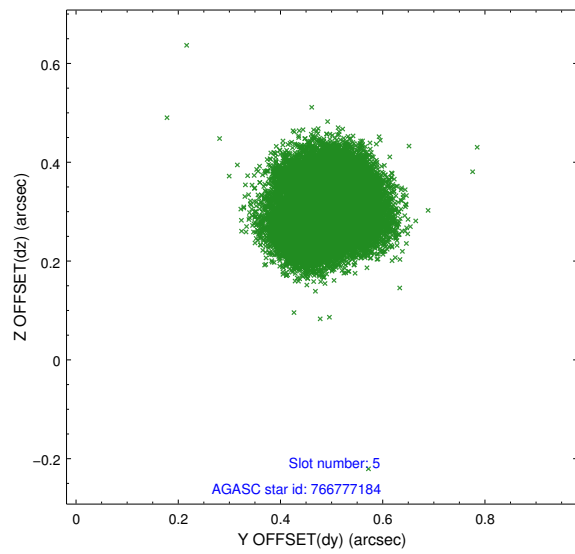
2.4.1 Slot 3



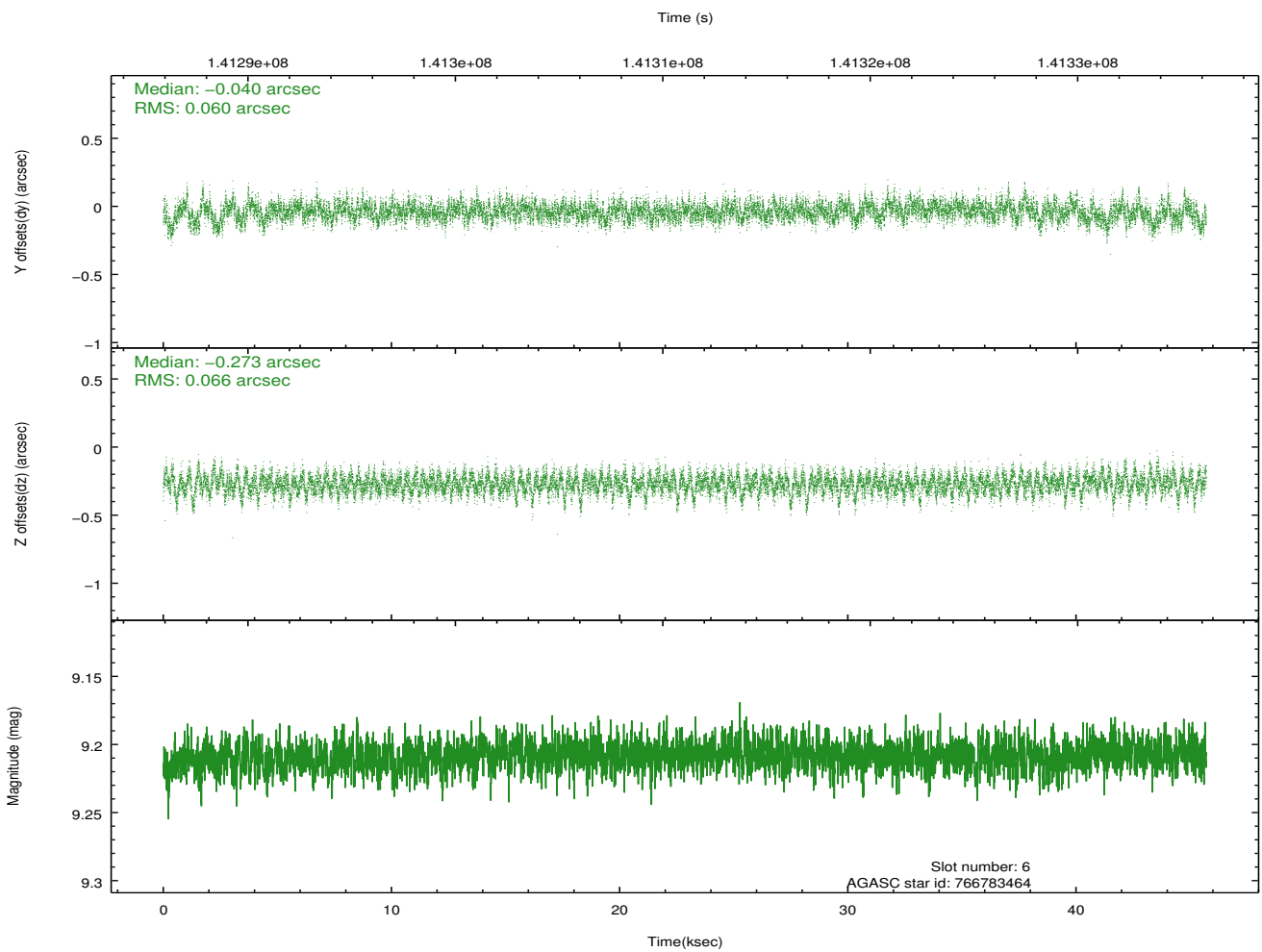
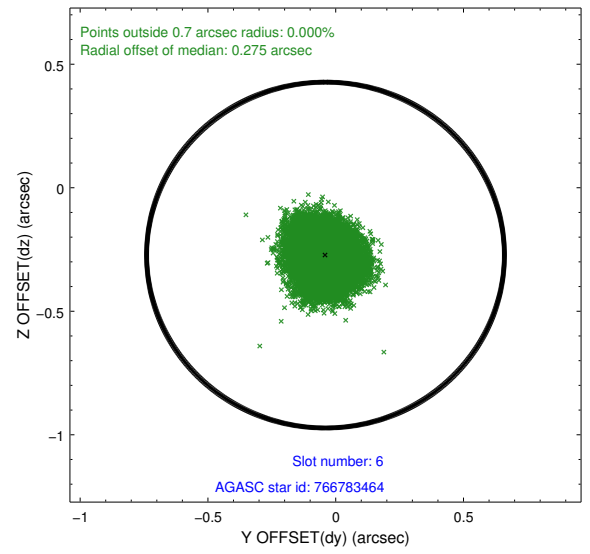
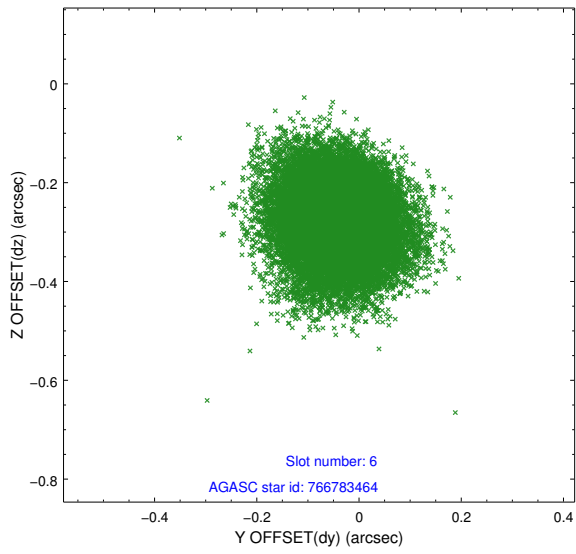
2.4.2 Slot 4



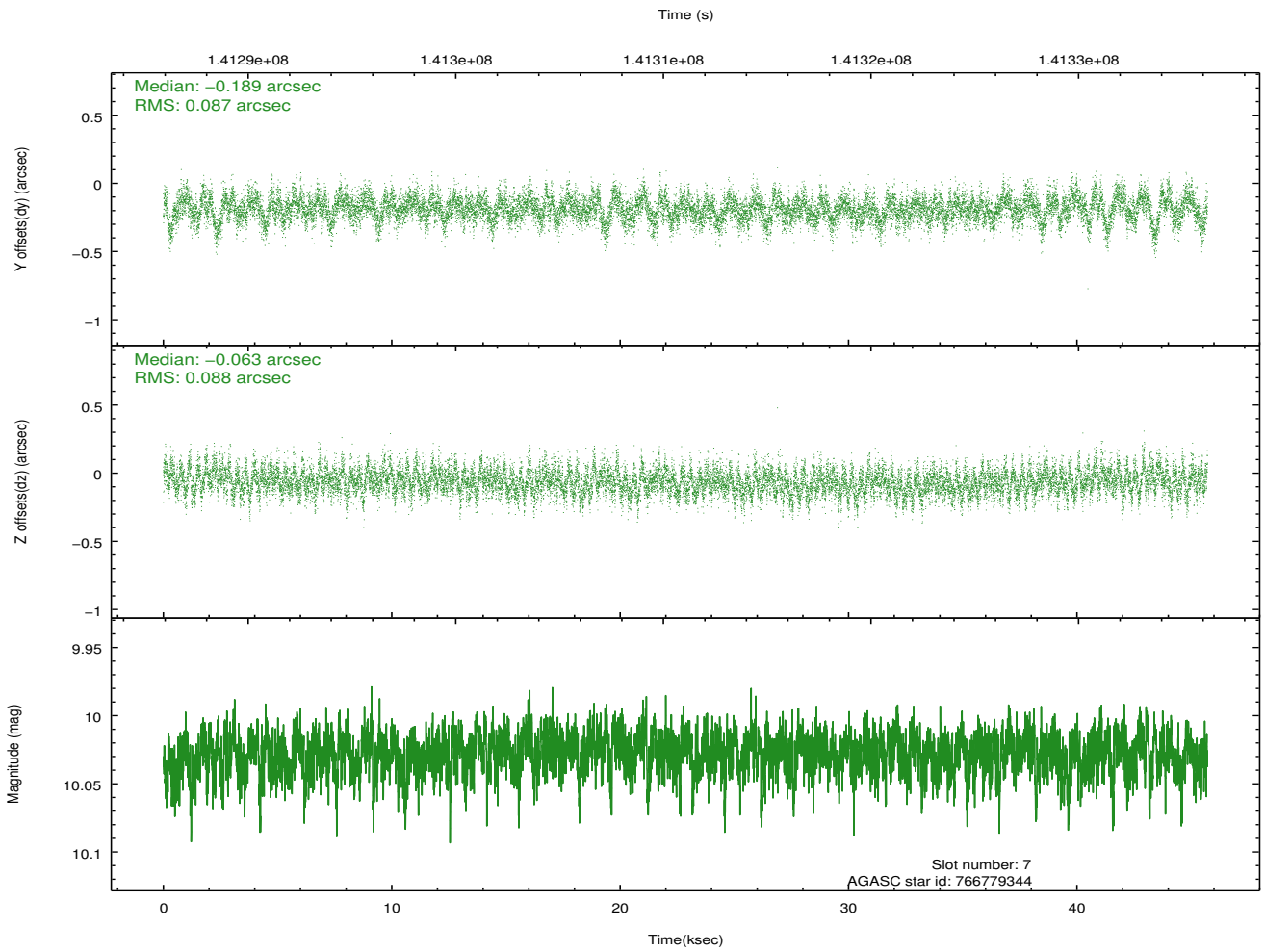
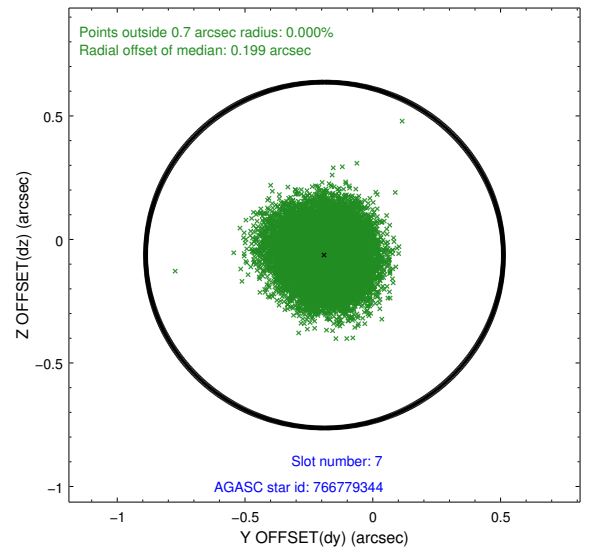
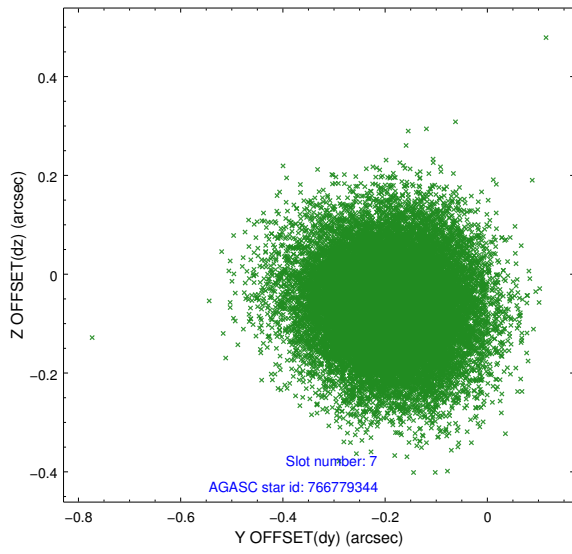
2.4.3 Slot 5



2.4.4 Slot 6

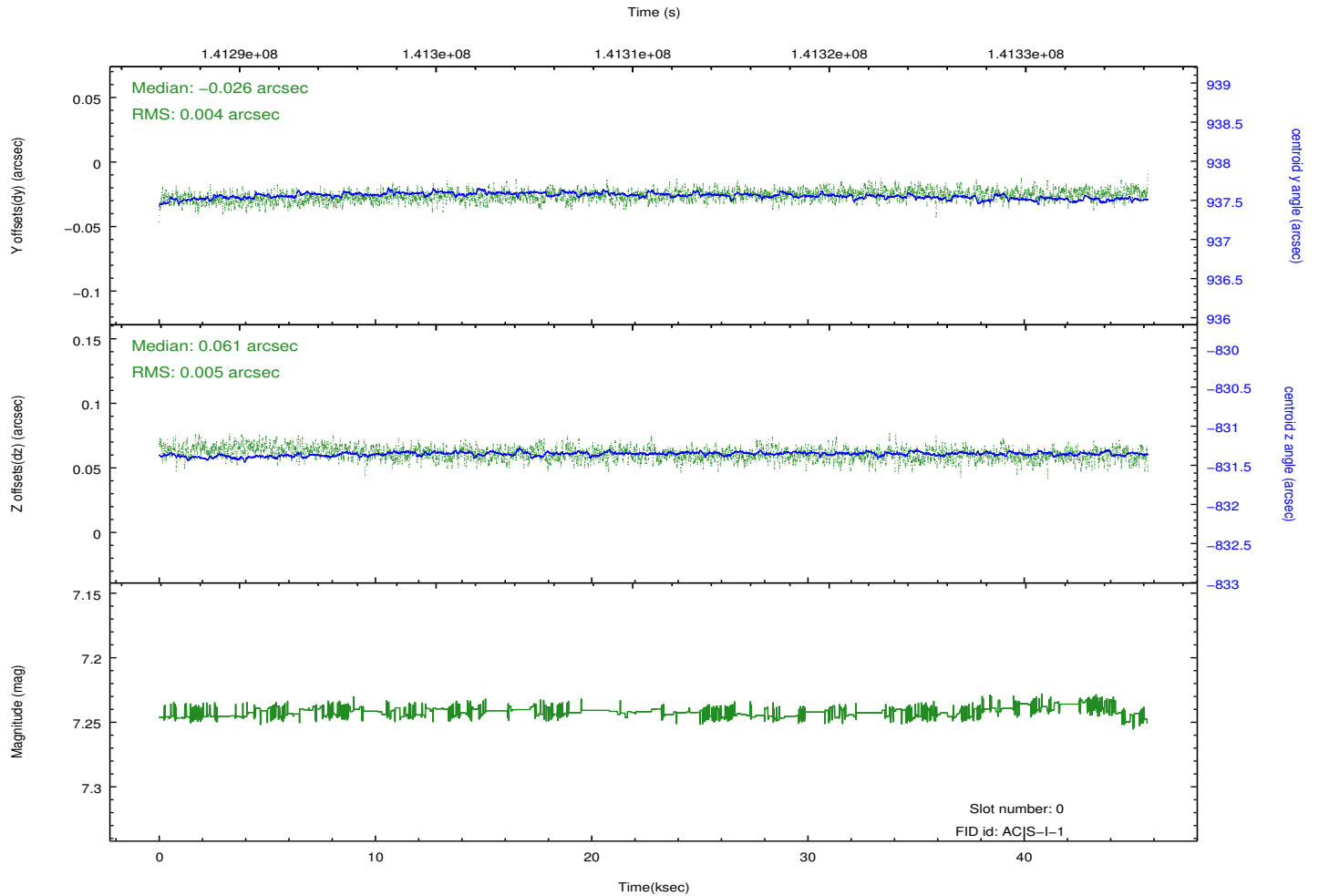
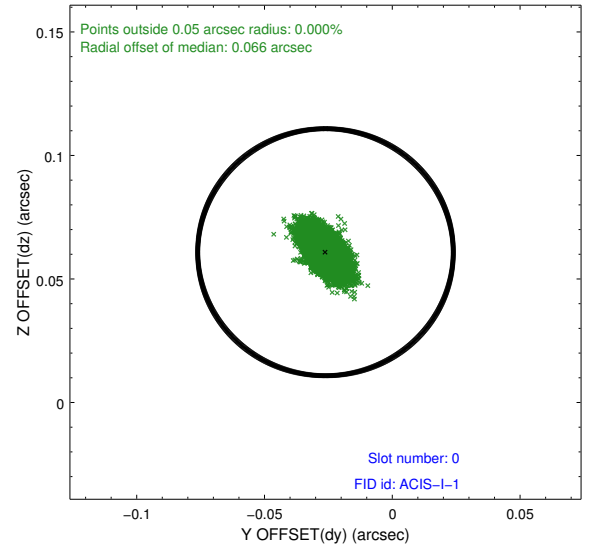
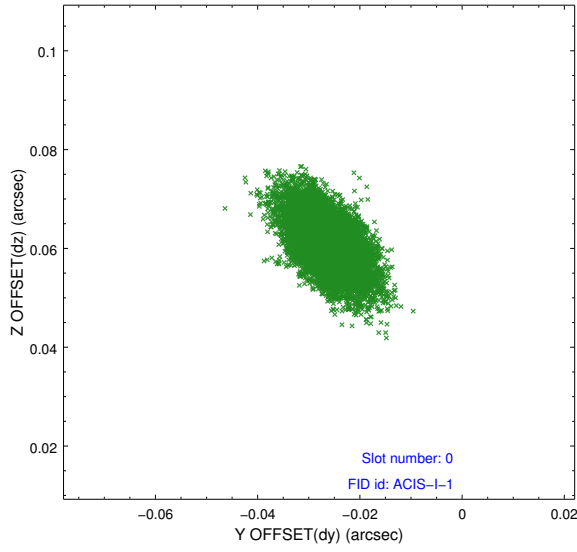


2.4.5 Slot 7

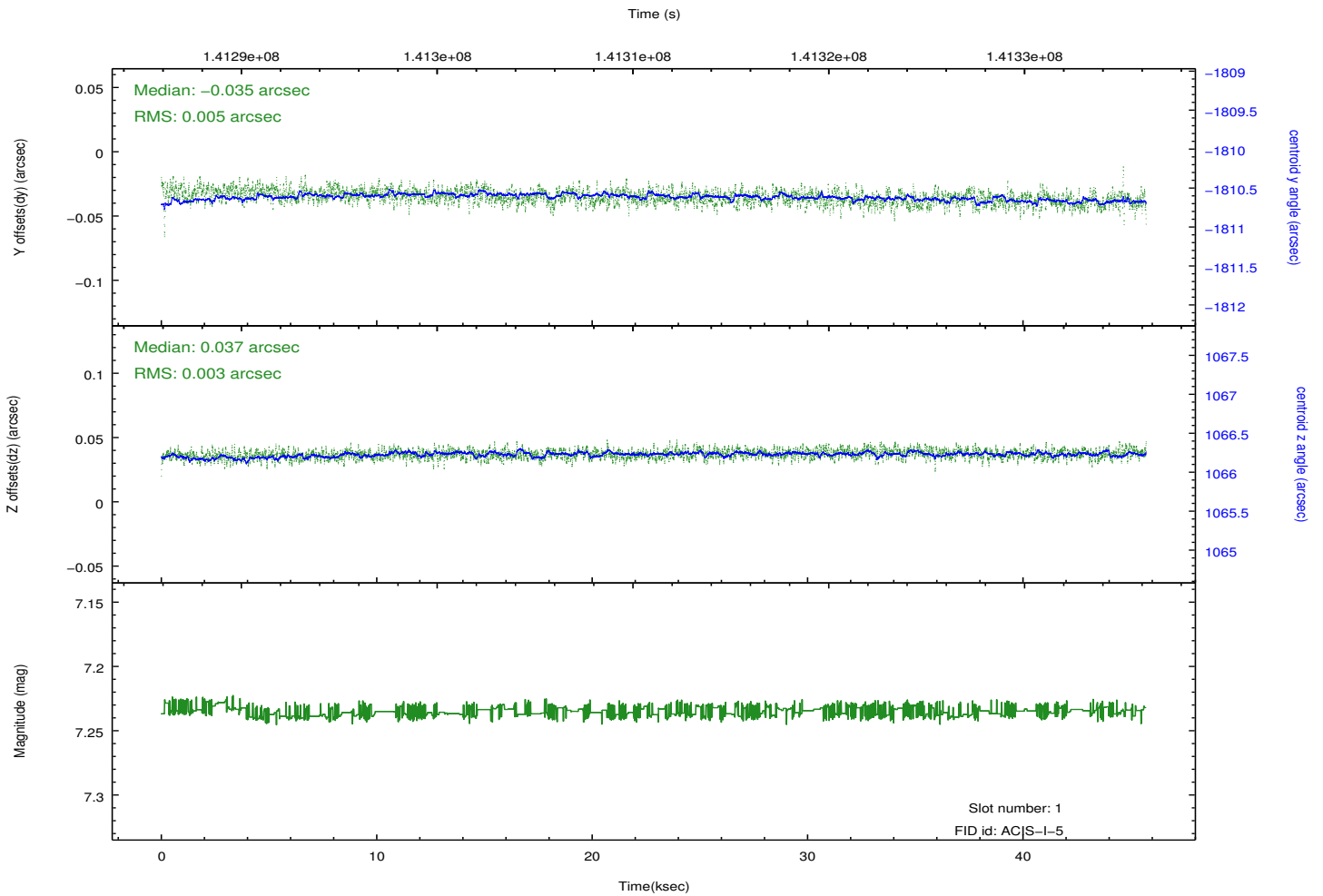
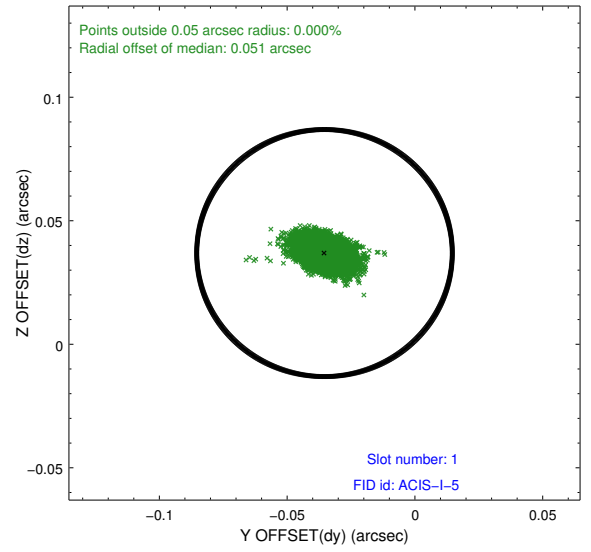
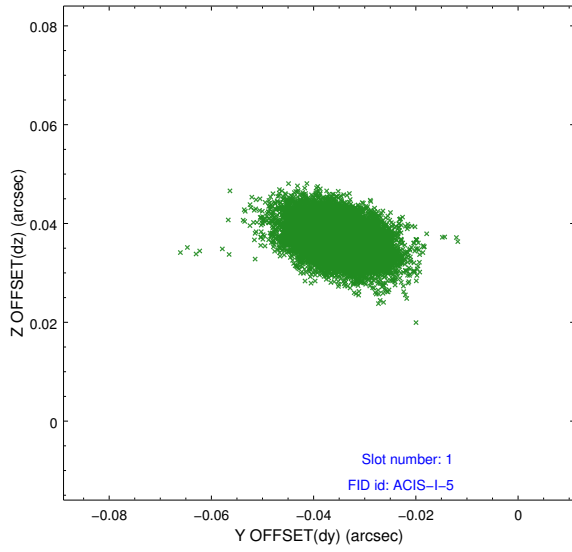


2.5 FID Slots

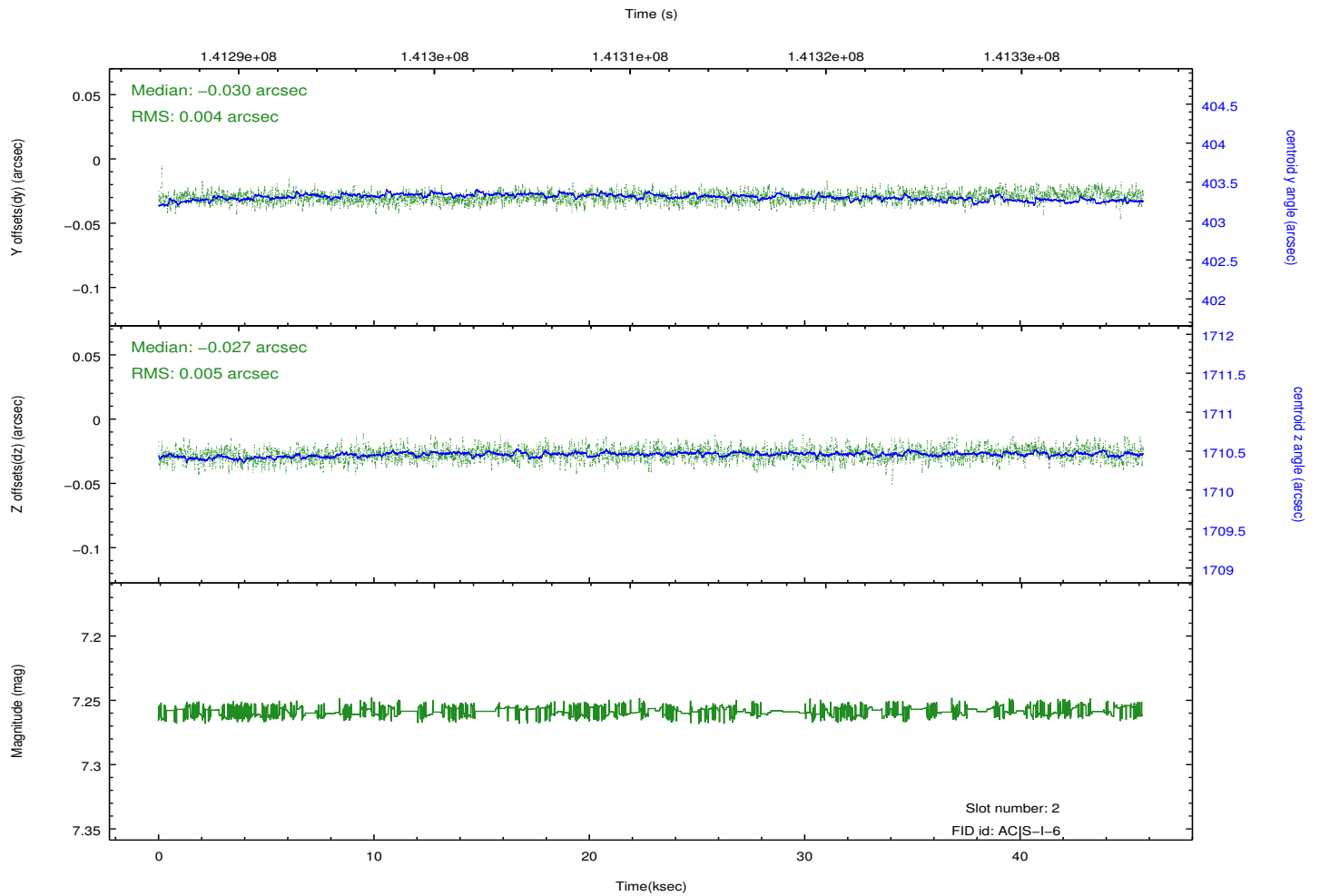
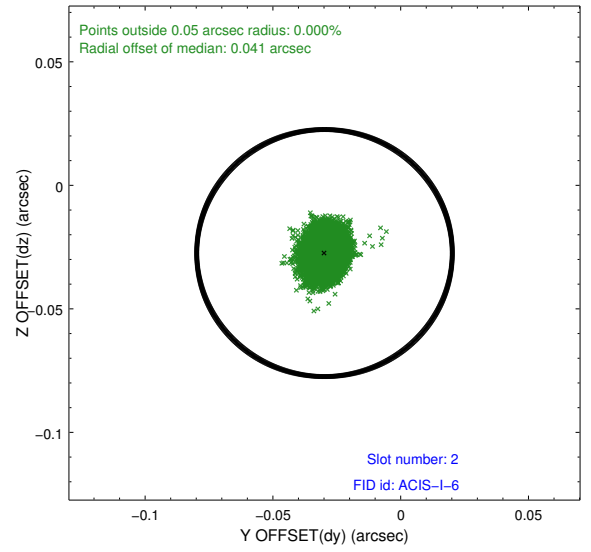
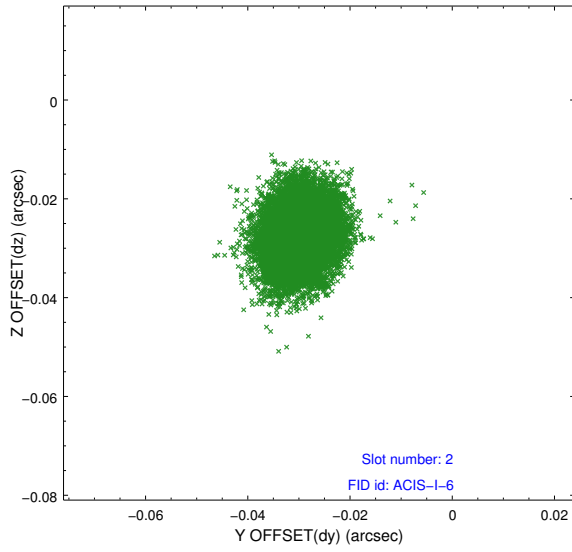
2.5.1 Slot 0



2.5.2 Slot 1



2.5.3 Slot 2



A Summary

A.1 Status

V&V Scientist	Jen Lauer
V&V Date (YYYY-MM-DD)	2012.10.19
V&V Edition	1
V&V Disposition and Status	OK
V&V Charge Time	45.114

A.2 Comments