

# V&V Reference Report

## L2 ASCDS Version : 8.4.5

Observation 3213 - L2 Version 4  
Chandra X-Ray Center

L2 Processing Date : Oct 18 2012

## Contents

<b>1</b>	<b>Front</b>	<b>2</b>
<b>2</b>	<b>OBI</b>	<b>3</b>
2.1	OBI . . . . .	3
2.1.1	Images . . . . .	3
2.1.2	Bias . . . . .	3
2.1.3	Parameters . . . . .	4
2.1.4	Events . . . . .	4
2.2	Compared Parameters . . . . .	5
2.3	Aspect . . . . .	6
2.4	Star Slots . . . . .	9
2.4.1	Slot 3 . . . . .	9
2.4.2	Slot 4 . . . . .	10
2.4.3	Slot 5 . . . . .	11
2.4.4	Slot 6 . . . . .	12
2.4.5	Slot 7 . . . . .	13
2.5	FID Slots . . . . .	14
2.5.1	Slot 0 . . . . .	14
2.5.2	Slot 1 . . . . .	15
2.5.3	Slot 2 . . . . .	16
<b>A</b>	<b>Summary</b>	<b>17</b>
A.1	Status . . . . .	17
A.2	Comments . . . . .	17

# 1 Front

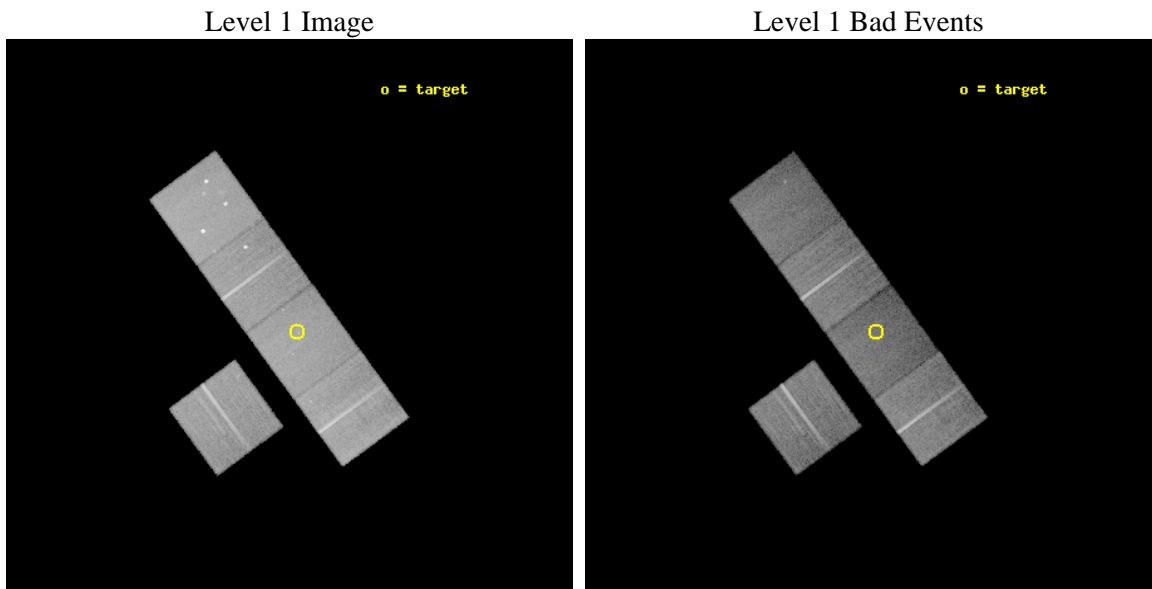
seq_num	800213	Sequence number
obs_id	3213	Observation id
title	THE X-RAY STRUCTURE OF OLD, HIGH LUMINOSITY FOSSIL GALAXY GROUPS	P
observer	Dr Laurence Jones	Principal investigator
object	RXJ1331.5+1108	Source name
dtcycle	0	&#160
cycle	P	events from which exps? Prim/Second/Both
ra_targ	202.875833	Observer's specified target RA [deg]
dec_targ	11.134167	Observer's specified target Dec [deg]
ra_nom	202.8897101914	Nominal RA [deg]
dec_nom	11.149833161827	Nominal Dec [deg]
roll_nom	53.747765272124	Nominal Roll [deg]
revision	4	Processing version of data
ontime	31102.299940169	Sum of GTIs [s]
livetime	30695.92549427	Livetime [s]
ontime3	31102.299940169	Sum of GTIs [s]
ontime5	31102.299940169	Sum of GTIs [s]
ontime6	31092.877019584	Sum of GTIs [s]
ontime7	31102.299940169	Sum of GTIs [s]
ontime8	31099.159079611	Sum of GTIs [s]
l2events	241078	Number of level 2 events



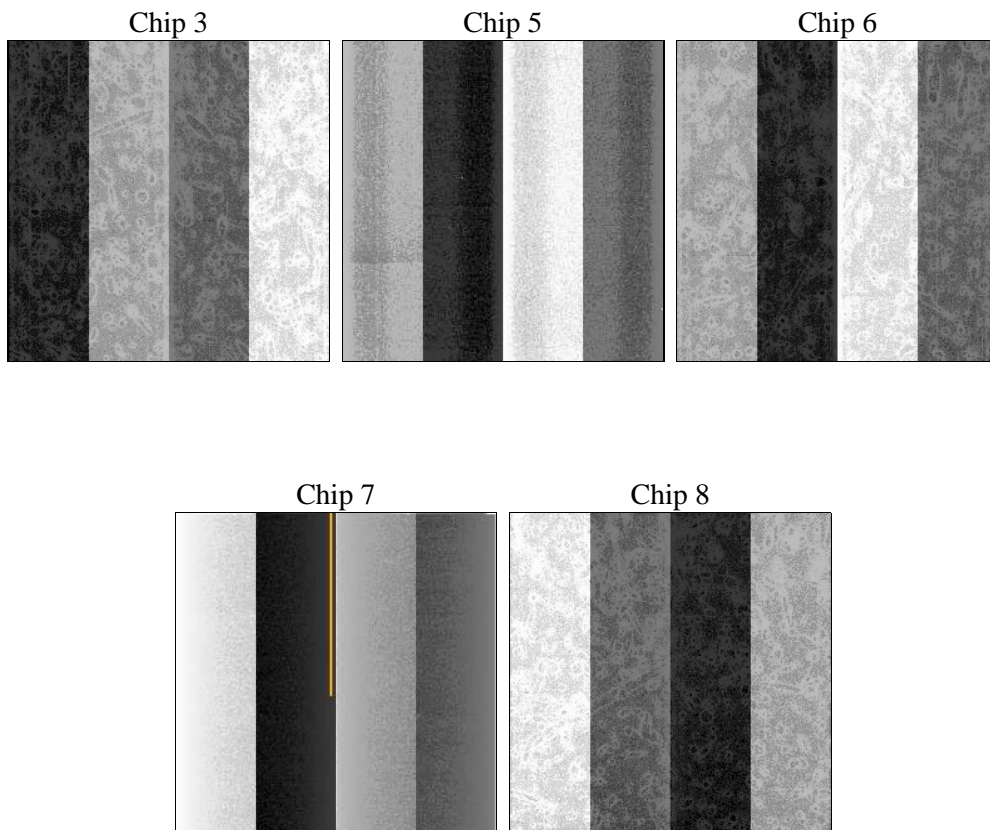
## 2 OBI

### 2.1 OBI

#### 2.1.1 Images



#### 2.1.2 Bias



### 2.1.3 Parameters

obi_num	0	Obi number	sched_exp_time	31000.000000	[s] Scheduled observation exposure time
ascdsver	8.4.5	Processing system revision	ontime	31102.299940169	Sum of GTIs [s]
caldbver	4.5.2	&#160	ontime3	31102.299940169	Sum of GTIs [s]
date	2012-10-18T12:16:38	Date and time of file creation	ontime5	31102.299940169	Sum of GTIs [s]
revision	4	Processing version of data	ontime6	31092.877019584	Sum of GTIs [s]
			ontime7	31102.299940169	Sum of GTIs [s]
			ontime8	31099.159079611	Sum of GTIs [s]
			l1events	969382	Number of level 1 events

### 2.1.4 Events

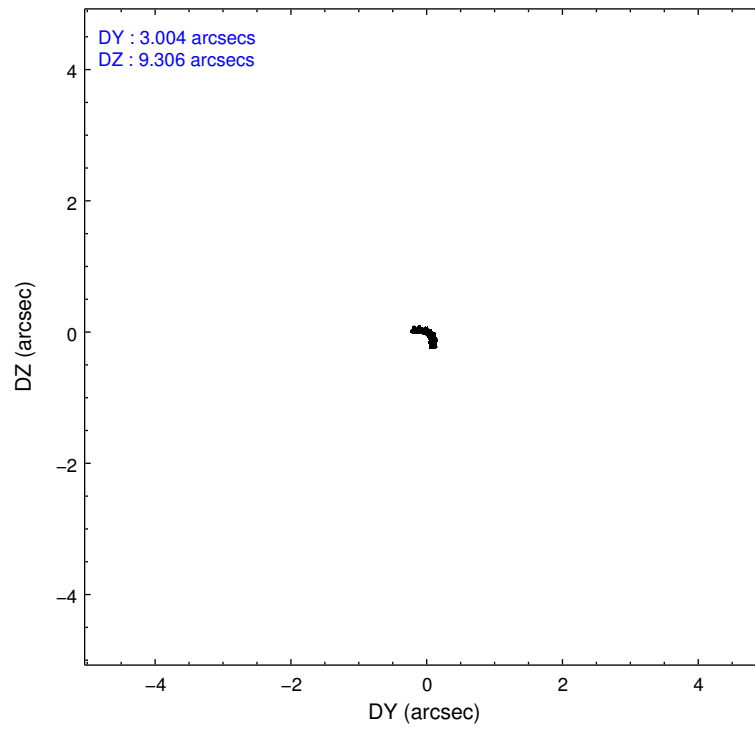
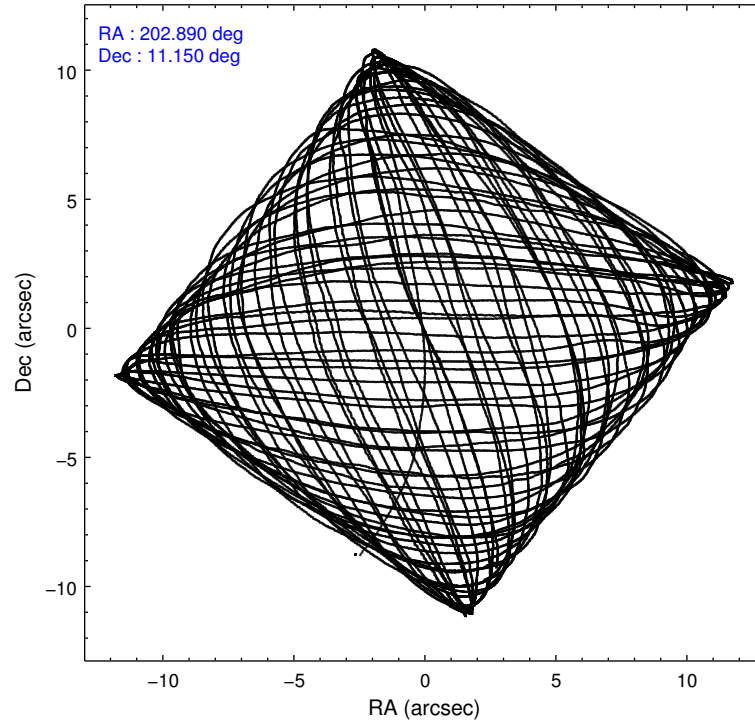
	ccd 3	ccd 5	ccd 6	ccd 7	ccd 8
level 1 events	168491	230148	175659	184416	210668
rejected events	152955	109393	154056	97906	164184
rejected %	90%	47%	87%	53%	77%

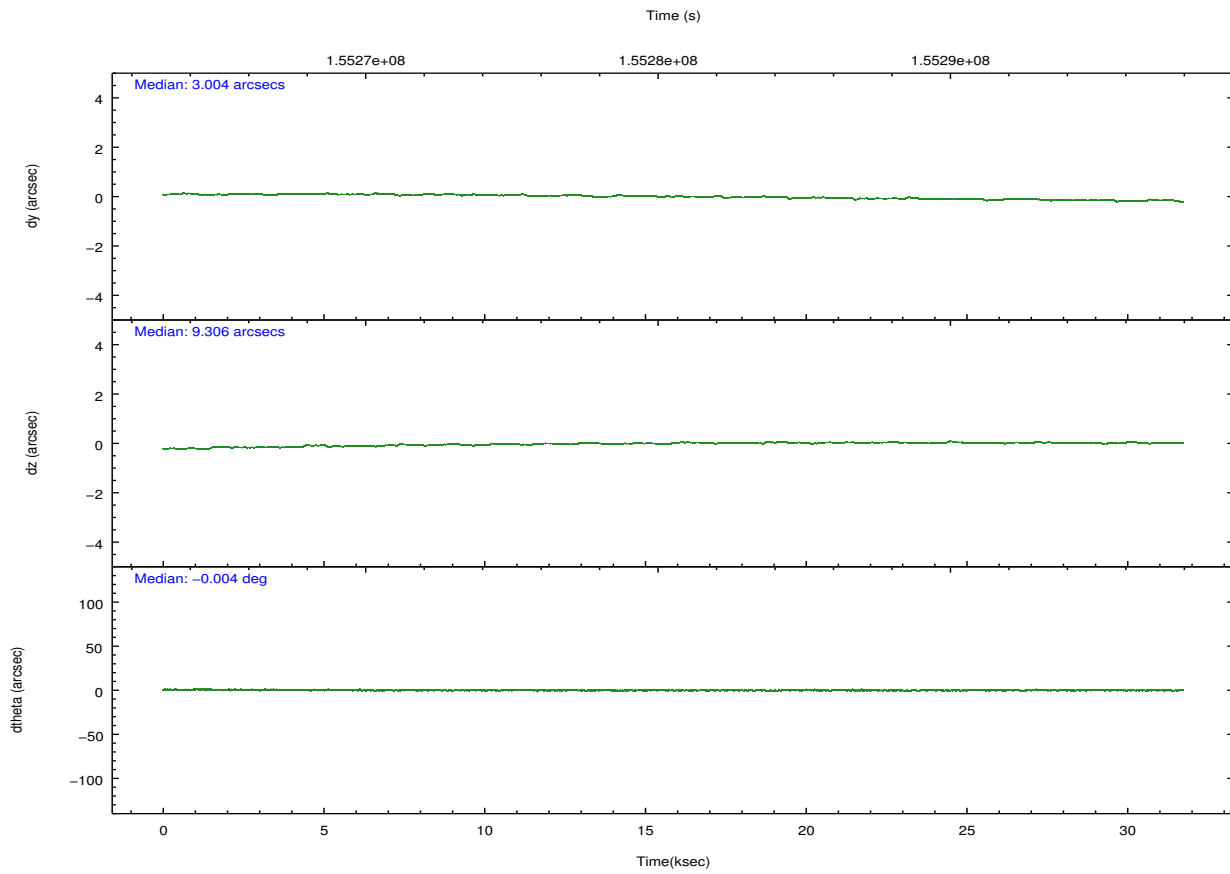
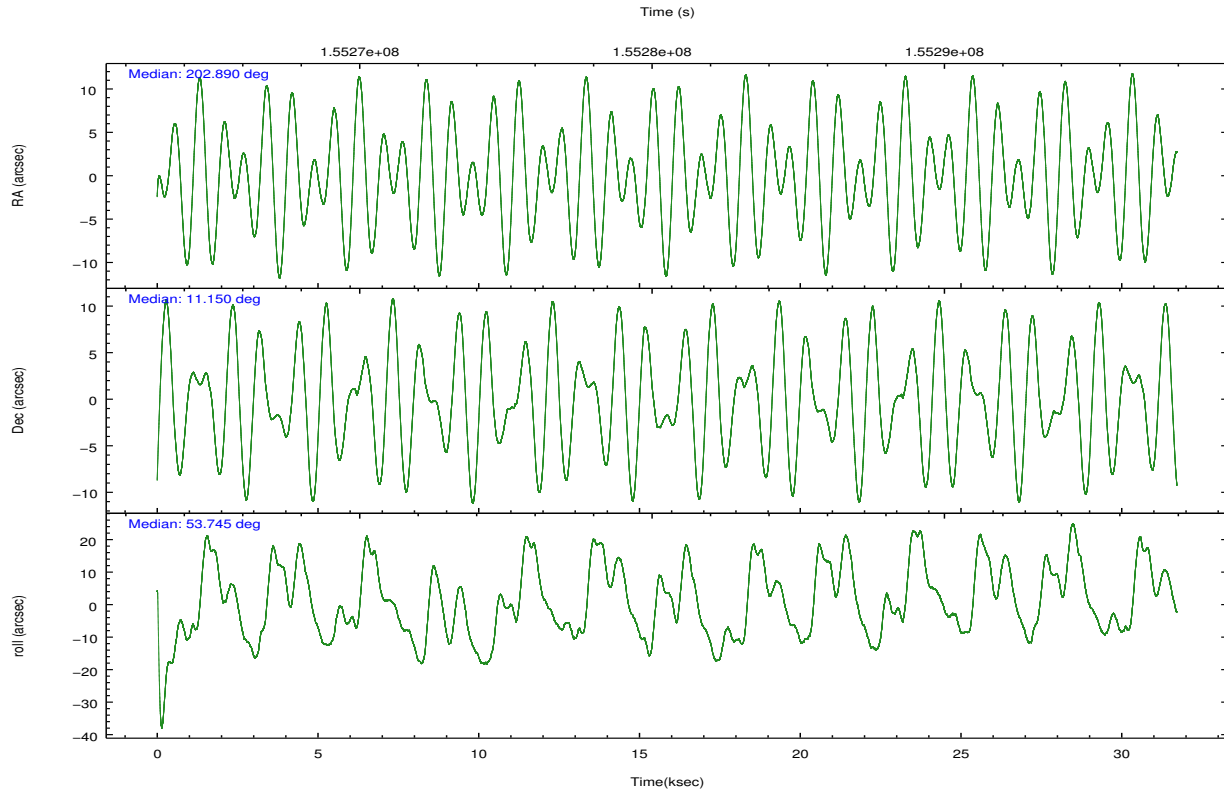
	ccd 3	ccd 5	ccd 6	ccd 7	ccd 8
grade 0 events	5751	20878	9482	9098	15024
	3%	9%	5%	4%	7%
grade 1 events	83	491	97	148	137
	0%	0%	0%	0%	0%
grade 2 events	3159	32814	4172	17481	9982
	1%	14%	2%	9%	4%
grade 3 events	1842	5592	2134	8419	5024
	1%	2%	1%	4%	2%
grade 4 events	1809	5385	2035	8304	4605
	1%	2%	1%	4%	2%
grade 5 events	6084	18074	6599	19100	9076
	3%	7%	3%	10%	4%
grade 6 events	2980	56105	3788	43226	11854
	1%	24%	2%	23%	5%
grade 7 events	146783	90809	147352	78640	154966
	87%	39%	83%	42%	73%

## 2.2 Compared Parameters

Parameter	Planned	Actual	Parameter	Planned	Actual
Instrument	ACIS	ACIS	Obspar format version number	7	7
Detector	ACIS-35678	ACIS-35678	Obspar file type	PREDICTED	ACTUAL
Grating	NONE	NONE	Obspar update status	NONE	UPDATED
Data mode	VFAINT	VFAINT	Number of optional ACIS chips dropped	0	0
Observation mode	POINTING	POINTING	On-chip summing requested	N	N
[deg] Pointing RA	202.887078	202.8897101914046	Subarray requested	NONE	NONE
[deg] Pointing Dec	11.122721	11.14983316182663	Alternating exposures requested	N	N
[deg] Pointing Roll	53.591625	53.74776527212438	[s] Primary exposure time	0.000000	3.1
[mm] SIM focus pos	-0.684267	-0.6828225247311905			
[mm] SIM defocus	0	0.001444936568705701			
[mm] SIM translation stage pos	-190.132523	-190.1400660498719			
[mm] SIM translation stage offset	0	0.00754346686406393			
[s] Observation start time (MET)	155265374.184000	155264143.90033			
Observation start date	2002-12-03T01:15:10	2002-12-03T00:55:43			
[s] Observation end time (MET)	155296374.184000	155297260.62672			
Observation end date	2002-12-03T09:51:50	2002-12-03T10:07:40			
Read mode	TIMED	TIMED			

## 2.3 Aspect



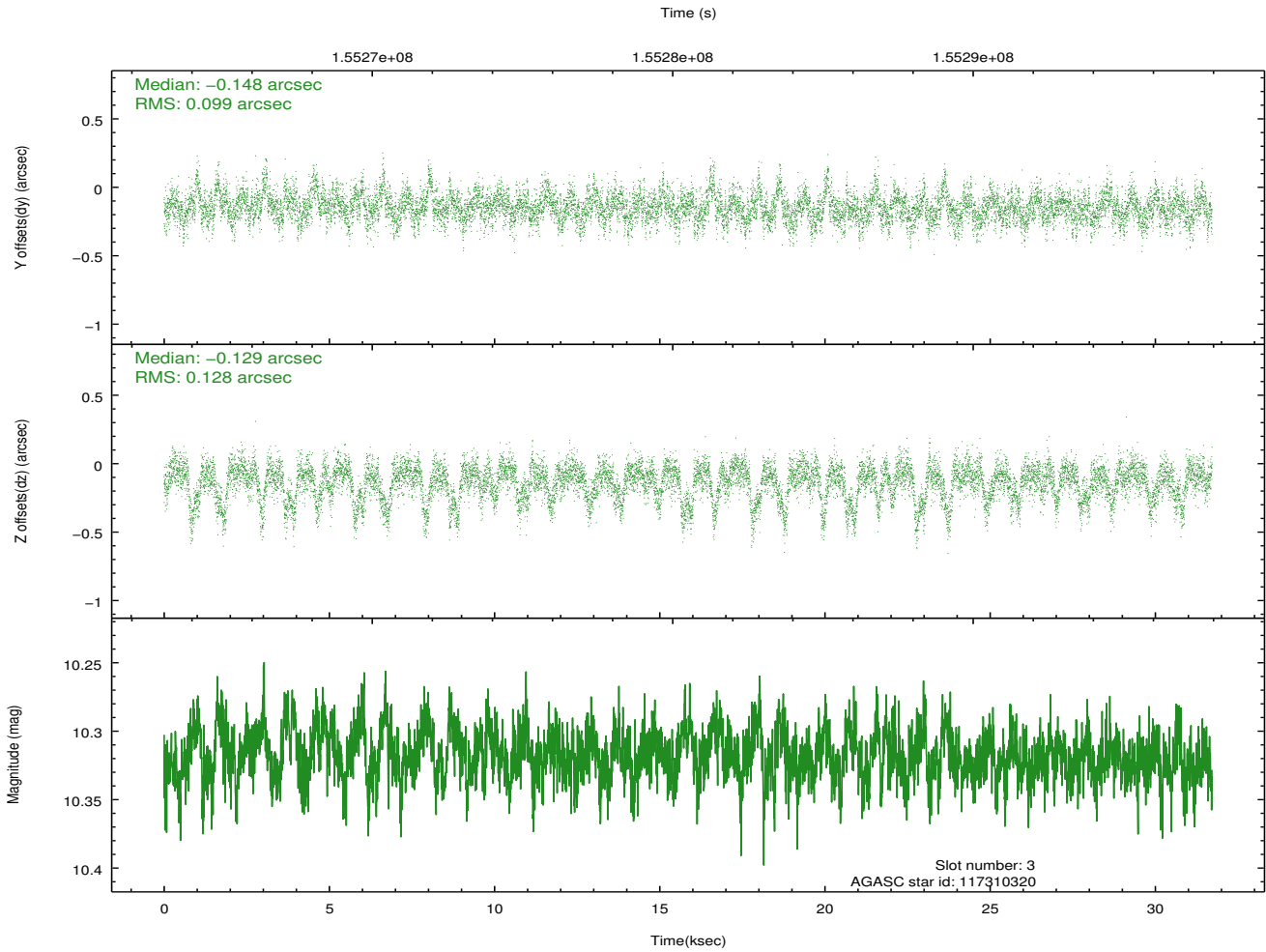
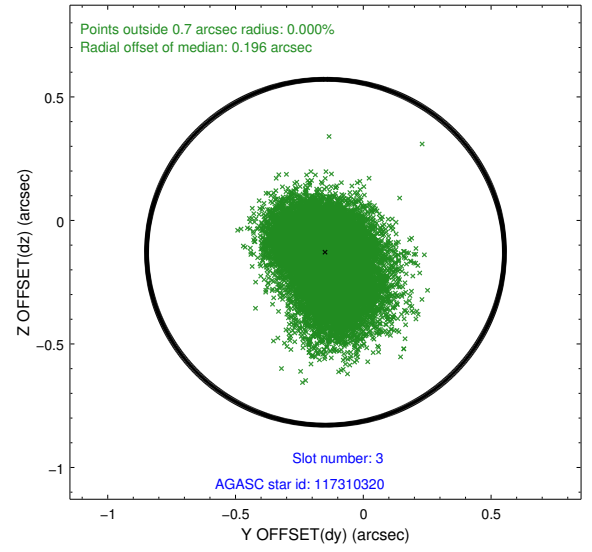
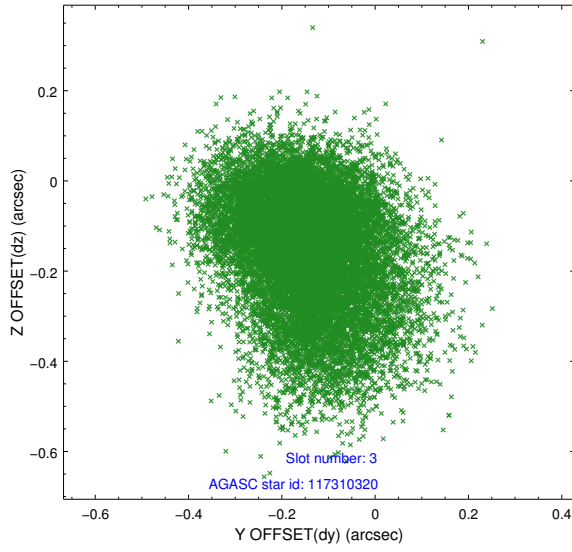


### Slot Statistics

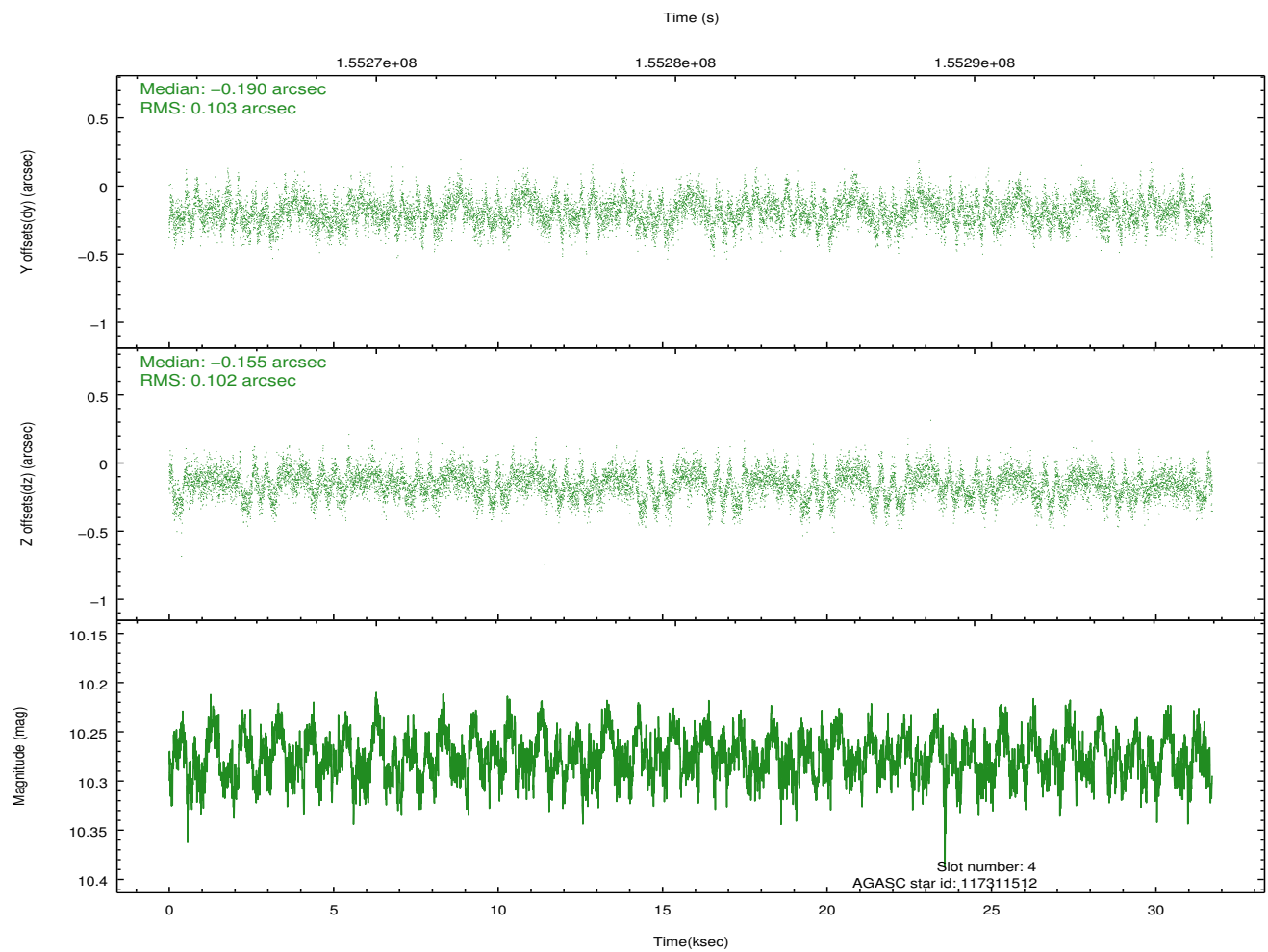
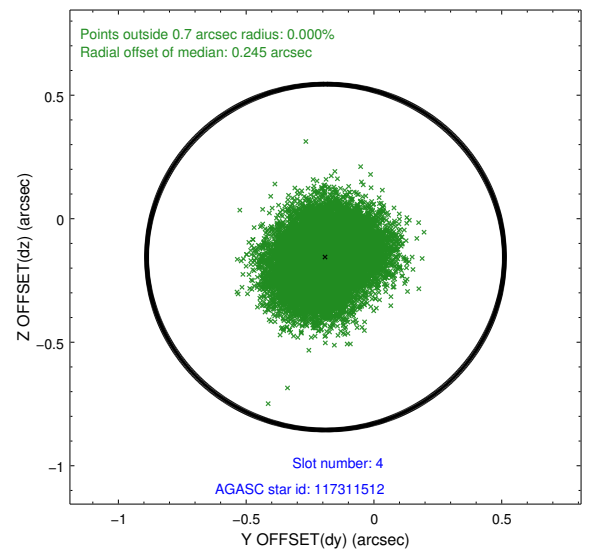
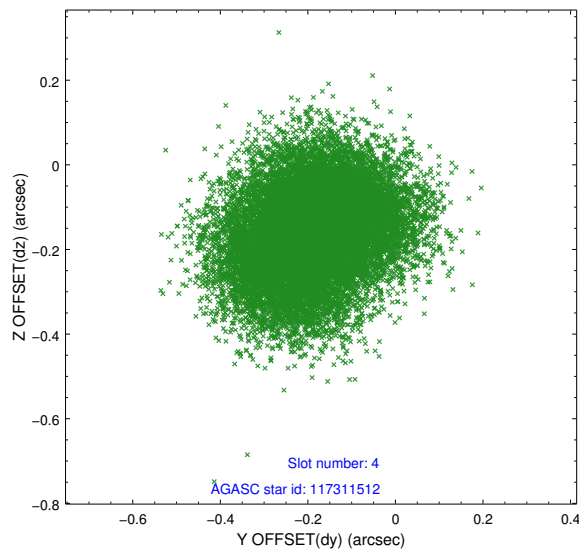
slot	status	id	mag	n_pts	med_dy	med_dz	dr1	dr2	ra	dec	mean_y	mean_z
0	FID	ACIS-S-2	7.11	7737	-0.033	-0.008	0.007	0.012	0.000000	0.000000	-755.65	-1730.52
1	FID	ACIS-S-4	7.20	7736	0.011	0.018	0.007	0.012	0.000000	0.000000	2157.62	177.95
2	FID	ACIS-S-5	7.24	7737	-0.009	-0.002	0.008	0.014	0.000000	0.000000	-1808.41	171.64
3	GUIDE	117310320	10.32	15460	-0.148	-0.129	0.167	0.293	202.797846	11.596939	1187.01	1266.29
4	GUIDE	117311512	10.28	15456	-0.190	-0.155	0.157	0.247	202.932611	11.534124	1287.08	749.68
5	GUIDE	117312064	10.19	15310	0.273	0.130	0.194	0.304	202.914804	10.352583	-2172.67	-1724.70
6	GUIDE	117313072	9.42	15468	0.073	-0.223	0.089	0.144	202.592703	10.931503	-1171.26	428.58
7	GUIDE	117313656	10.58	15159	0.020	0.403	0.290	0.459	203.017596	10.738194	-839.97	-1192.85

## 2.4 Star Slots

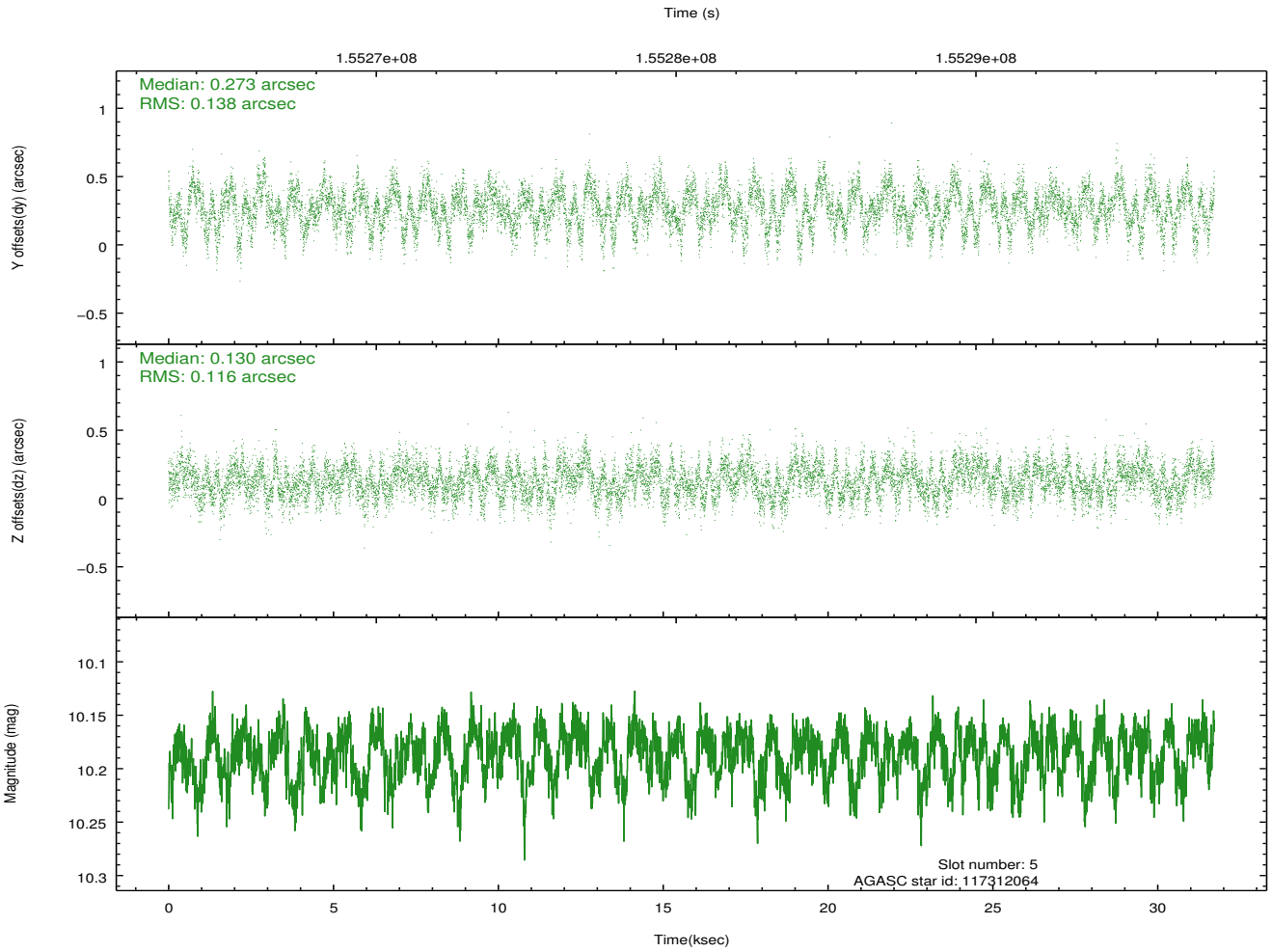
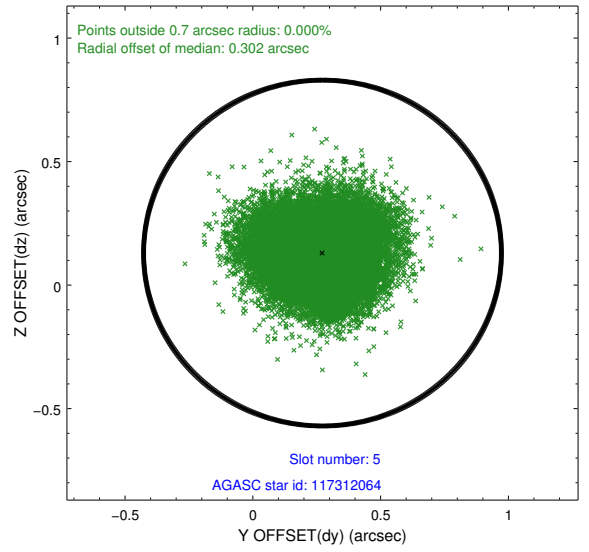
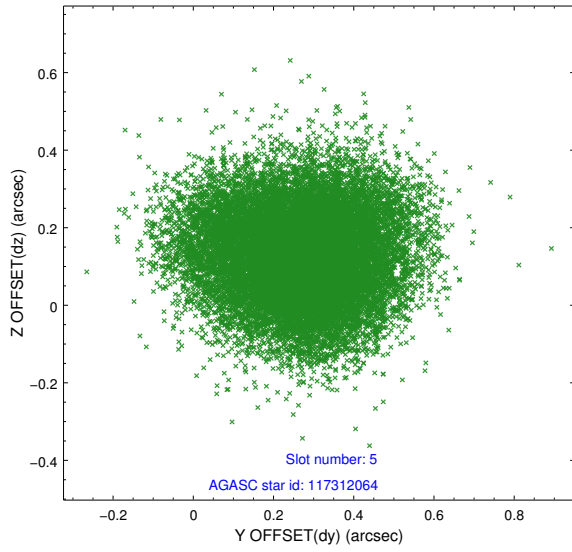
### 2.4.1 Slot 3



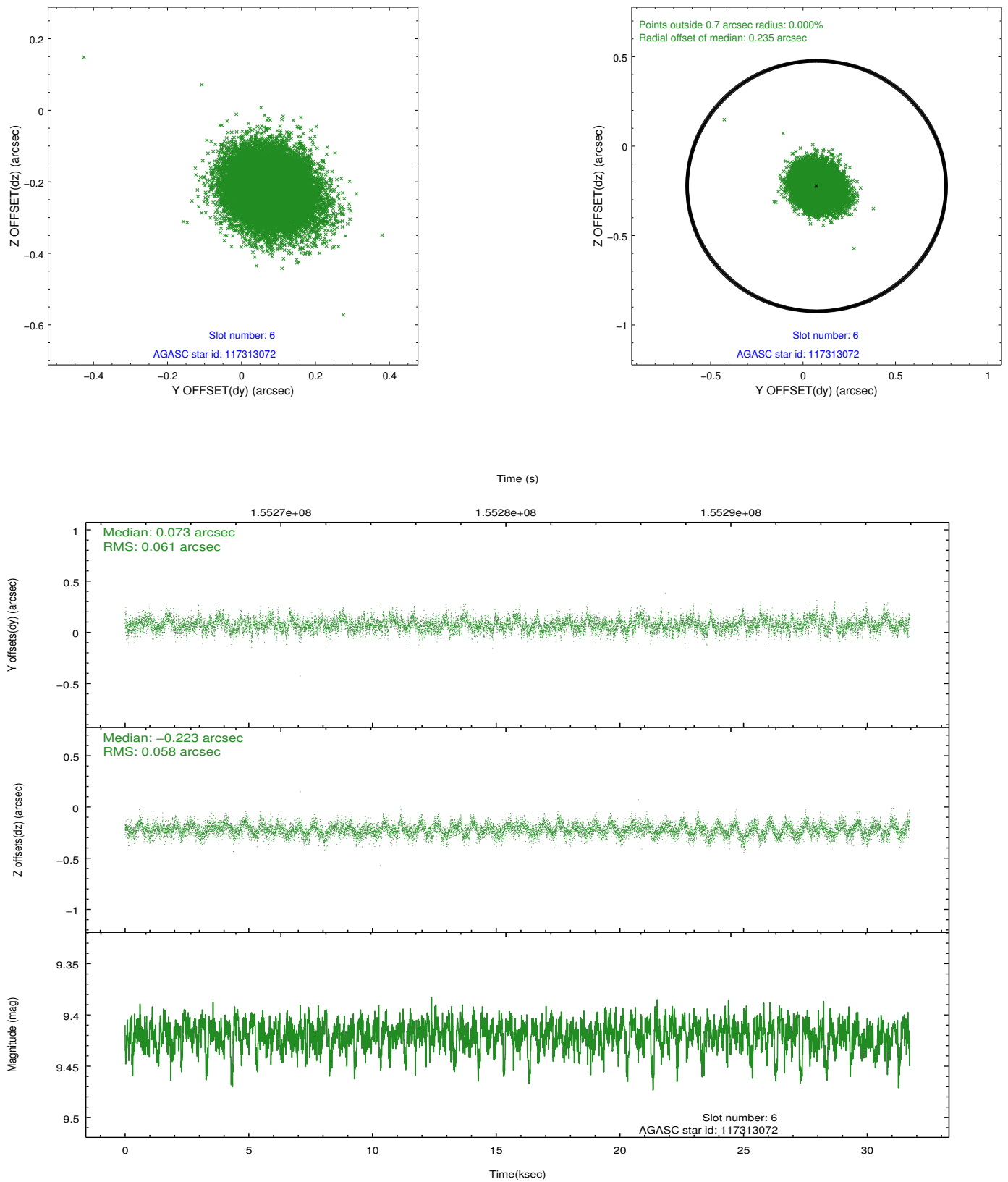
## 2.4.2 Slot 4



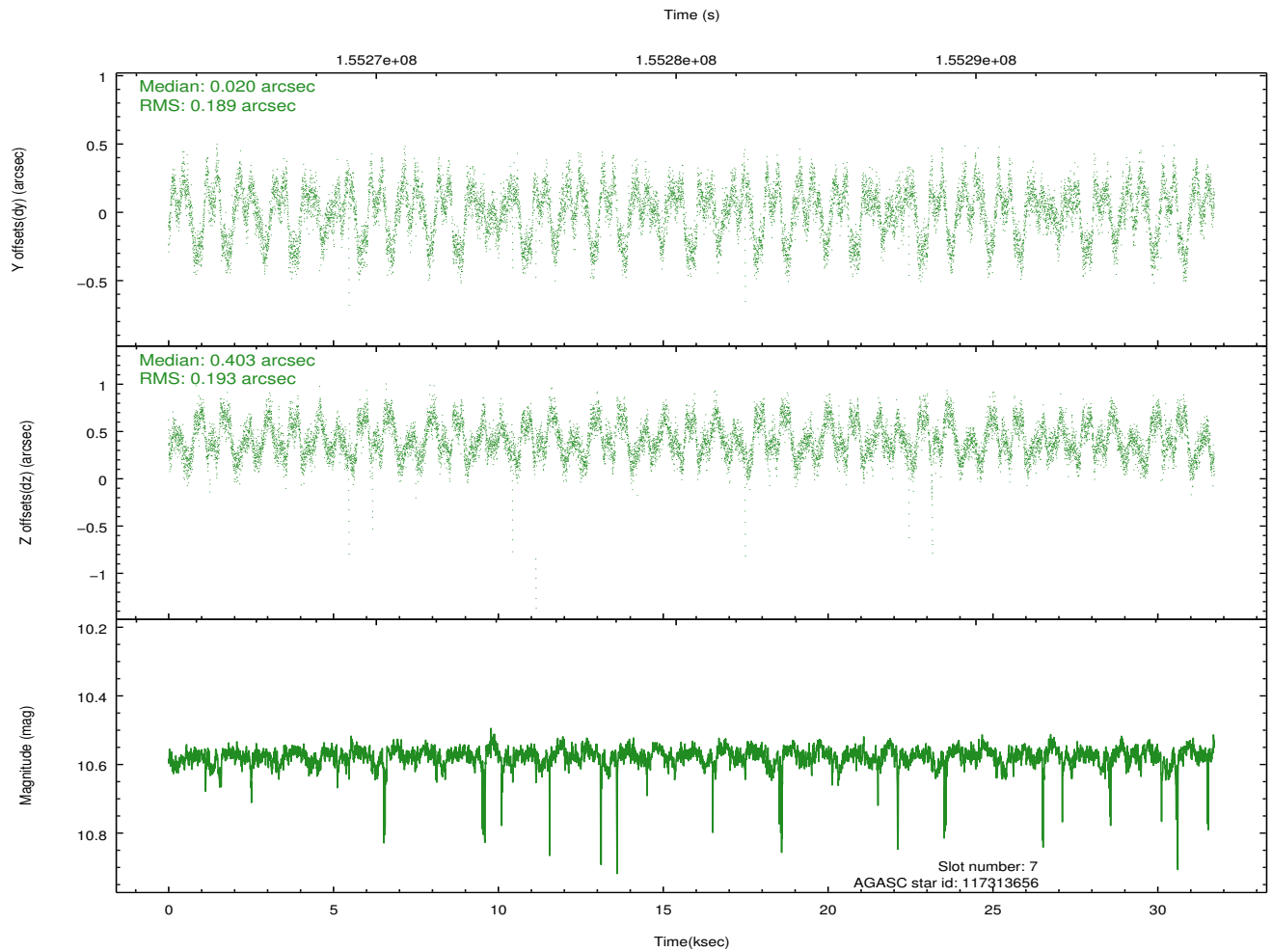
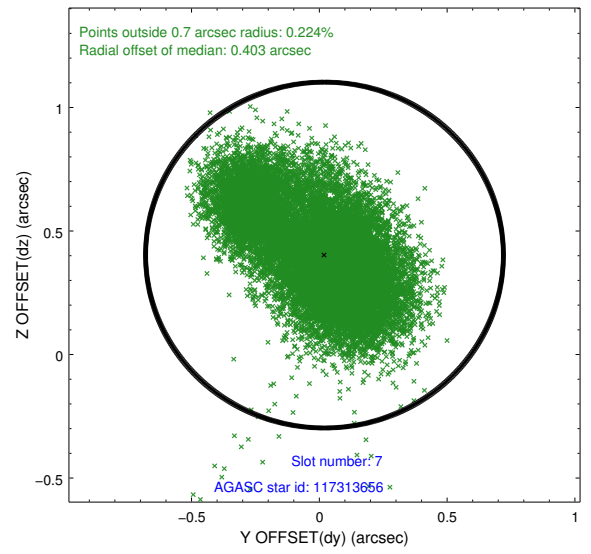
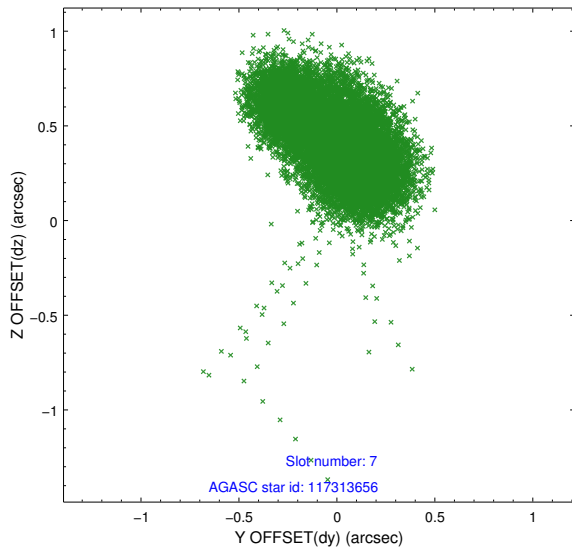
### 2.4.3 Slot 5



## 2.4.4 Slot 6

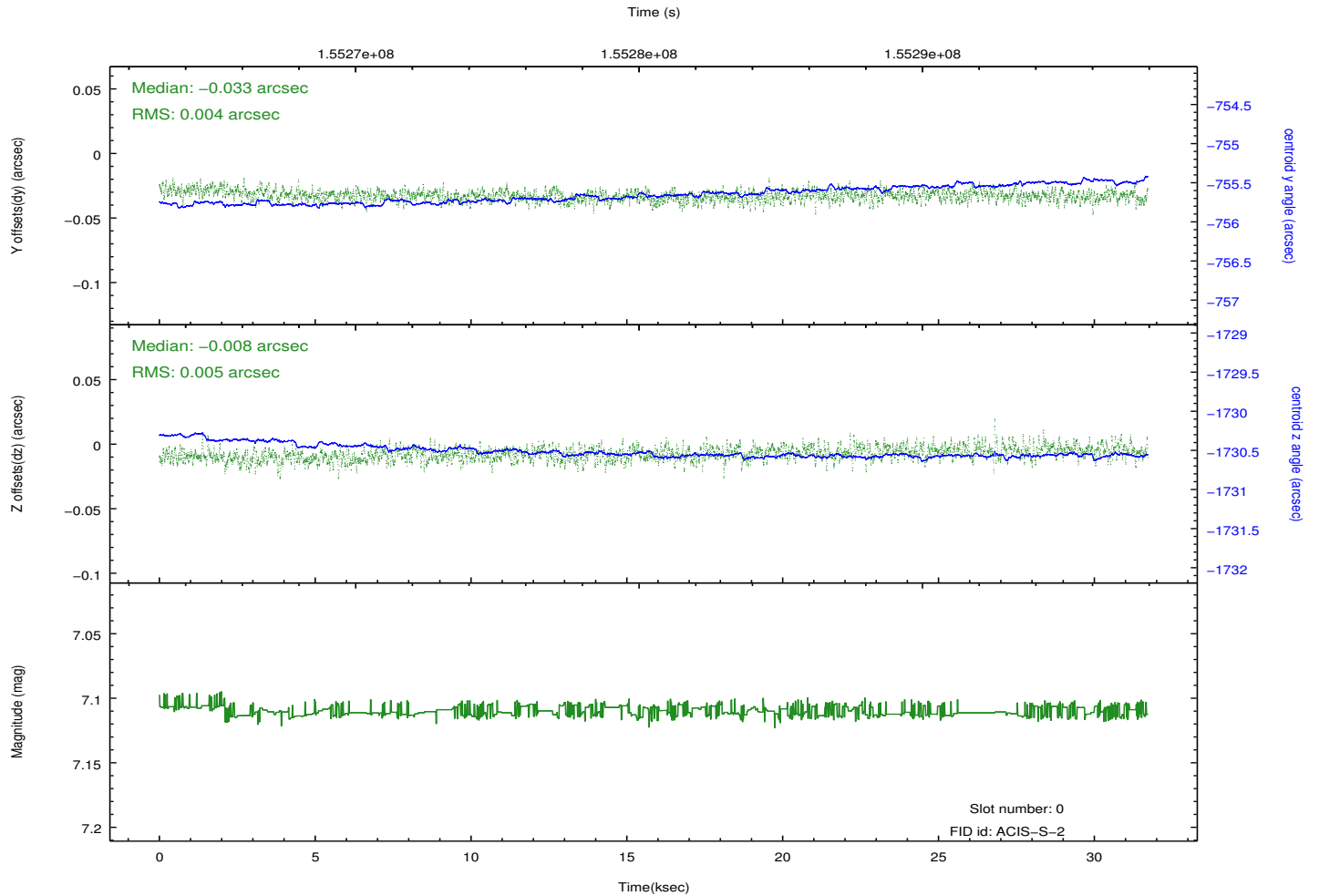
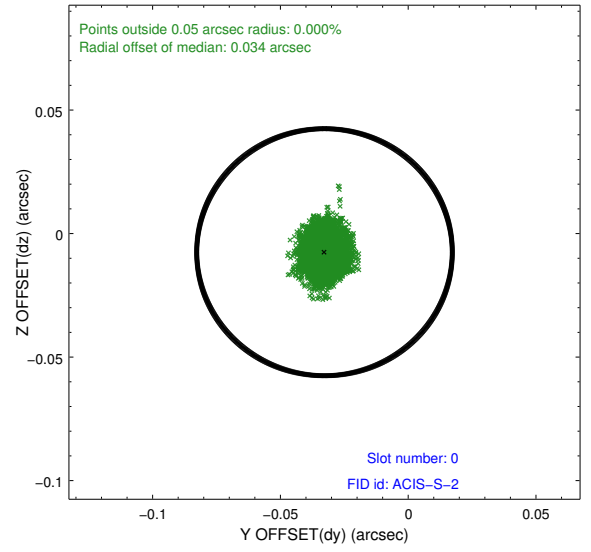
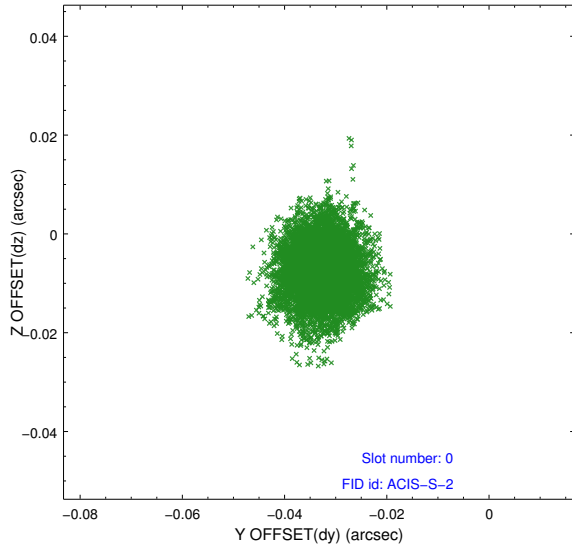


### 2.4.5 Slot 7

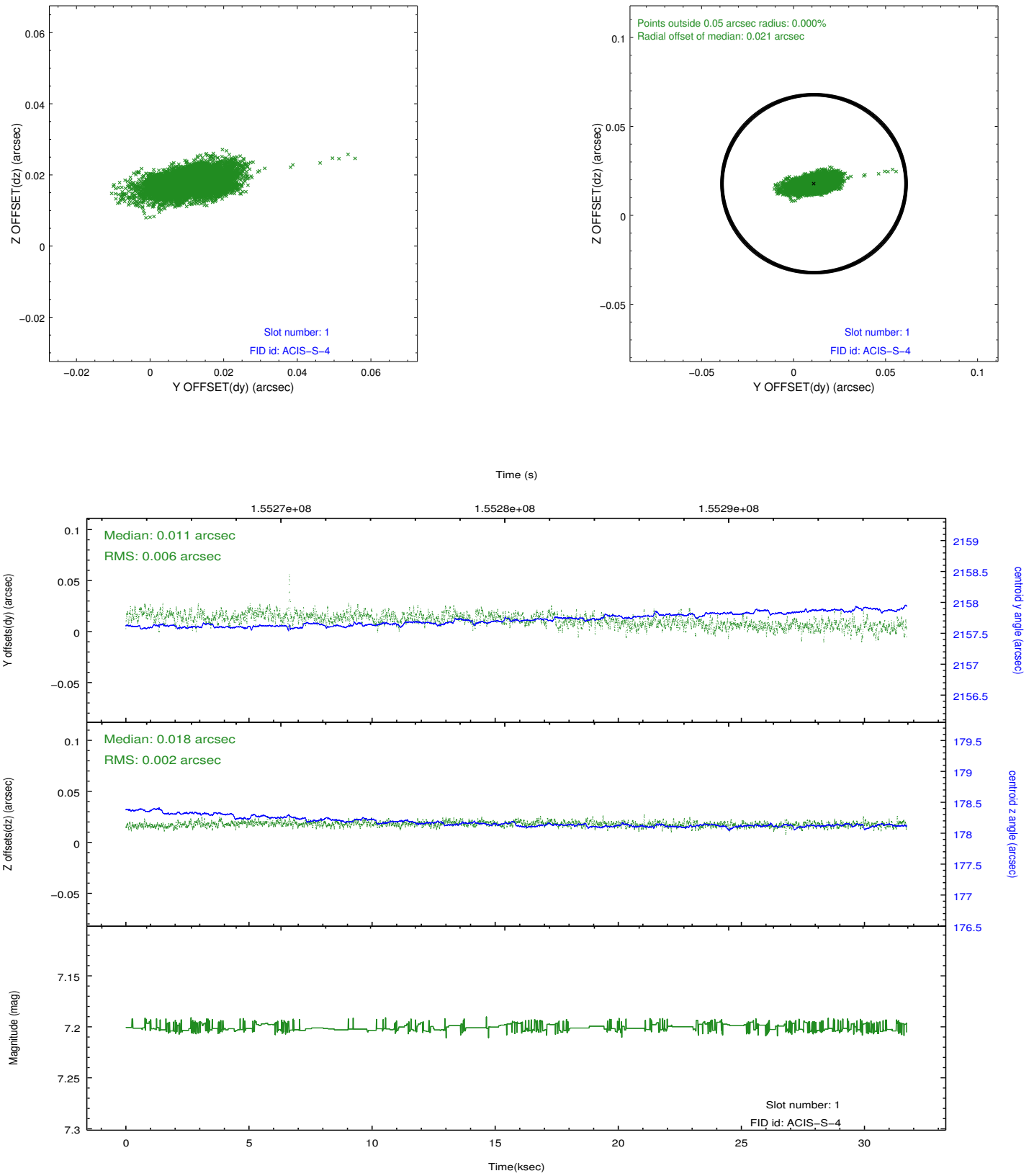


## 2.5 FID Slots

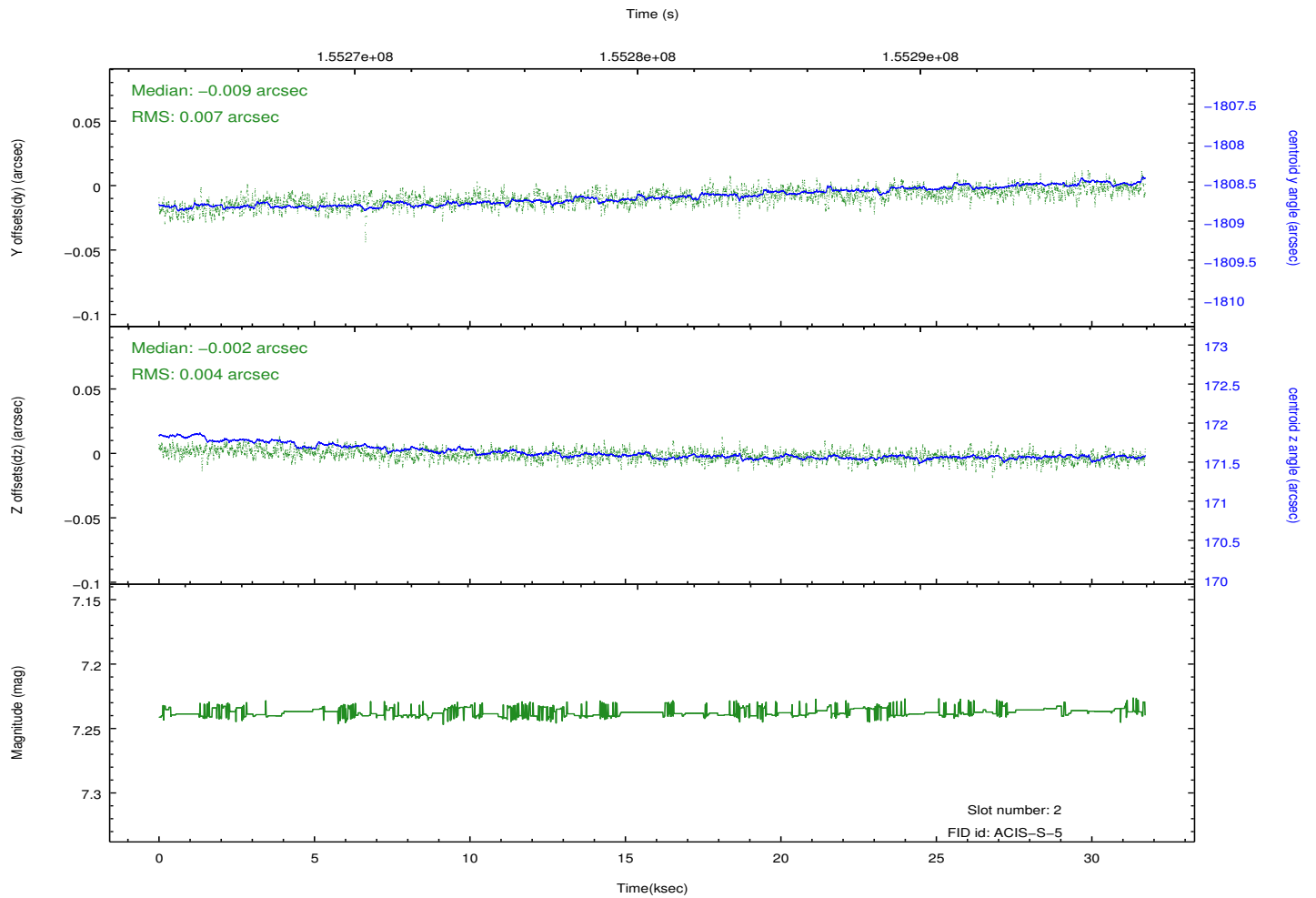
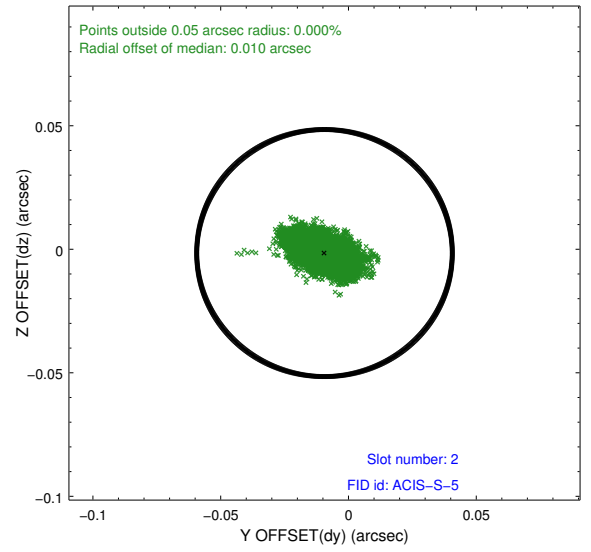
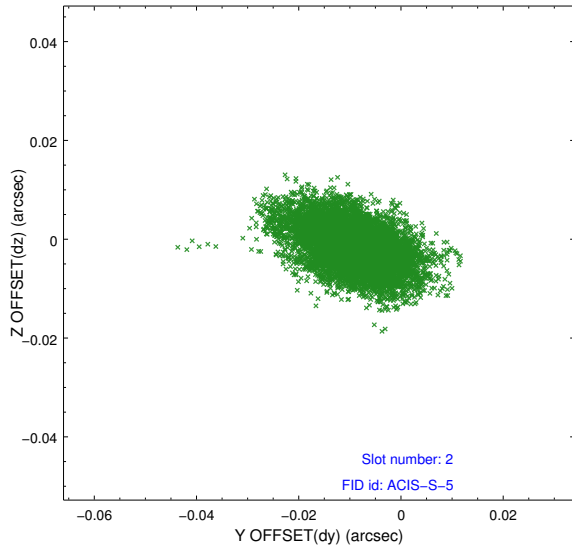
### 2.5.1 Slot 0



## 2.5.2 Slot 1



### 2.5.3 Slot 2



# A Summary

## A.1 Status

V&V Scientist	Jen Lauer
V&V Date (YYYY-MM-DD)	2012.10.28
V&V Edition	1
V&V Disposition and Status	OK
V&V Charge Time	31.105

## A.2 Comments