

# V&V Reference Report

## L2 ASCDS Version : 8.4.5

Observation 3223 - L2 Version 3  
Chandra X-Ray Center

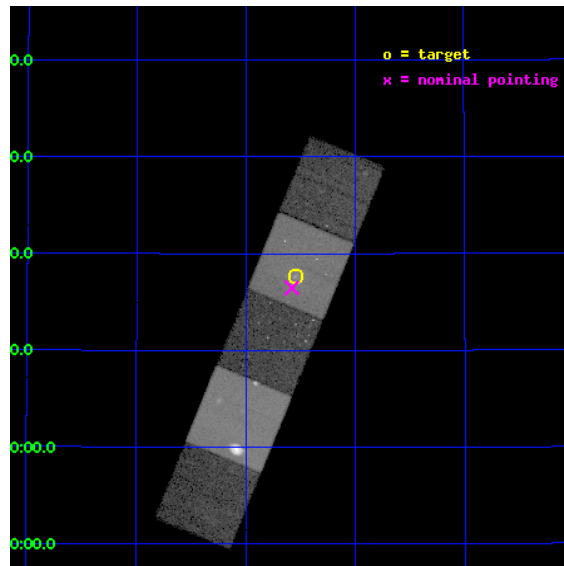
L2 Processing Date : Oct 13 2012

## Contents

<b>1</b>	<b>Front</b>	<b>2</b>
<b>2</b>	<b>OBI</b>	<b>3</b>
2.1	OBI . . . . .	3
2.1.1	Images . . . . .	3
2.1.2	Bias . . . . .	3
2.1.3	Parameters . . . . .	4
2.1.4	Events . . . . .	4
2.2	Compared Parameters . . . . .	5
2.3	Aspect . . . . .	6
2.4	Star Slots . . . . .	9
2.4.1	Slot 3 . . . . .	9
2.4.2	Slot 4 . . . . .	10
2.4.3	Slot 5 . . . . .	11
2.4.4	Slot 6 . . . . .	12
2.4.5	Slot 7 . . . . .	13
2.5	FID Slots . . . . .	14
2.5.1	Slot 0 . . . . .	14
2.5.2	Slot 1 . . . . .	15
2.5.3	Slot 2 . . . . .	16
<b>A</b>	<b>Summary</b>	<b>17</b>
A.1	Status . . . . .	17
A.2	Comments . . . . .	17

# 1 Front

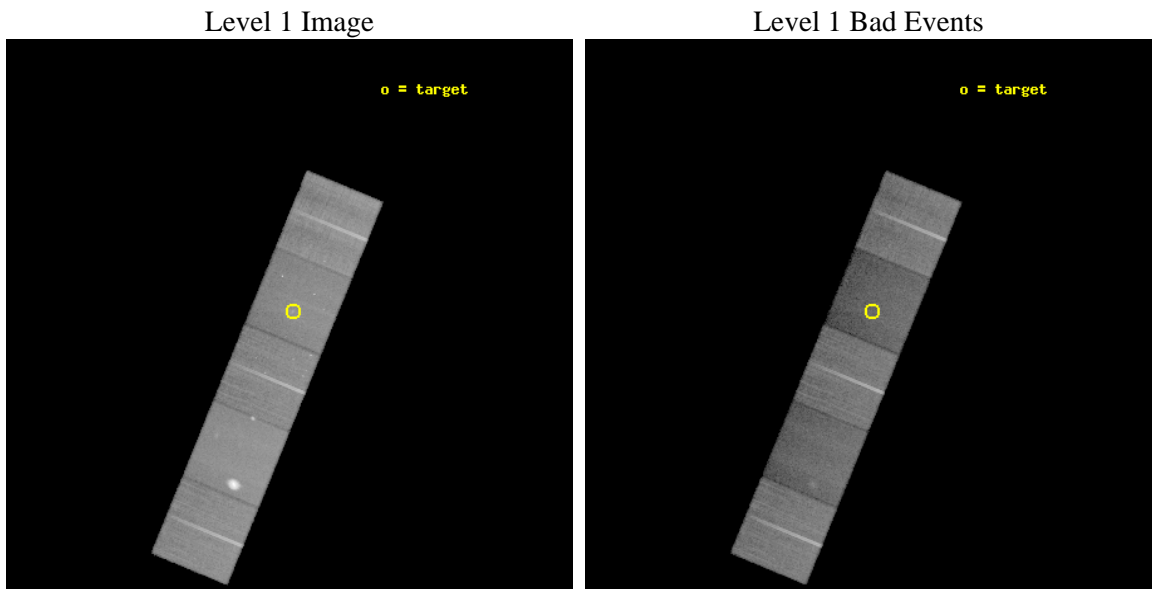
seq_num	800223	Sequence number
obs_id	3223	Observation id
title	THE X-RAY STRUCTURE OF THE PROTOTYPE FOSSIL GROUP	Proposal title
observer	Dr Laurence Jones	Principal investigator
object	RXJ1340.6+4018	Source name
dtycycle	0	&#160
cycle	P	events from which exps? Prim/Second/Both
ra_targ	205.136667	Observer's specified target RA [deg]
dec_targ	40.294444	Observer's specified target Dec [deg]
ra_nom	205.14487816188	Nominal RA [deg]
dec_nom	40.274630534082	Nominal Dec [deg]
roll_nom	292.35873703205	Nominal Roll [deg]
revision	3	Processing version of data
ontime	47615.999908417	Sum of GTIs [s]
livetime	46993.861815225	Livetime [s]
ontime4	47603.436017662	Sum of GTIs [s]
ontime5	47615.999908417	Sum of GTIs [s]
ontime6	47606.577027768	Sum of GTIs [s]
ontime7	47615.999908417	Sum of GTIs [s]
ontime8	47606.576948017	Sum of GTIs [s]
l2events	354495	Number of level 2 events



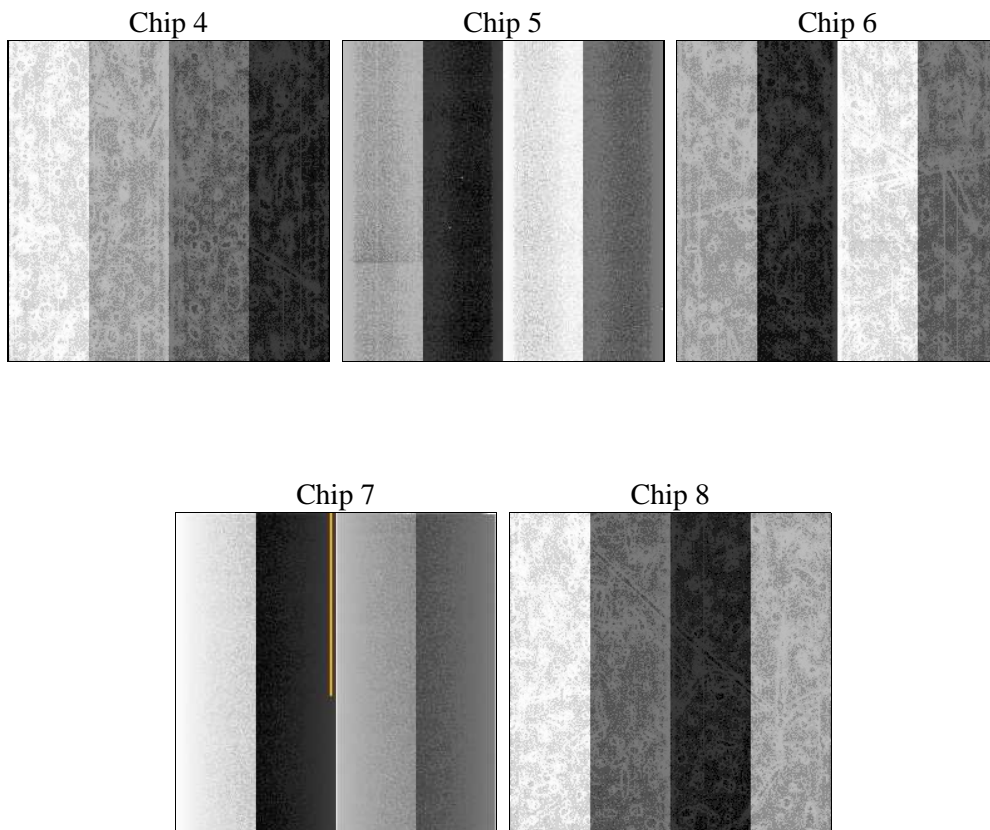
## 2 OBI

### 2.1 OBI

#### 2.1.1 Images



#### 2.1.2 Bias



### 2.1.3 Parameters

obi_num	1	Obi number	sched_exp_time	47455.479000	[s] Scheduled observation exposure time
ascdsver	8.4.5	Processing system revision	ontime	47615.999908417	Sum of GTIs [s]
caldbver	4.5.2	&#160	ontime4	47603.436017662	Sum of GTIs [s]
date	2012-10-13T06:00:29	Date and time of file creation	ontime5	47615.999908417	Sum of GTIs [s]
revision	3	Processing version of data	ontime6	47606.577027768	Sum of GTIs [s]
			ontime7	47615.999908417	Sum of GTIs [s]
			ontime8	47606.576948017	Sum of GTIs [s]
			l1events	1282755	Number of level 1 events

### 2.1.4 Events

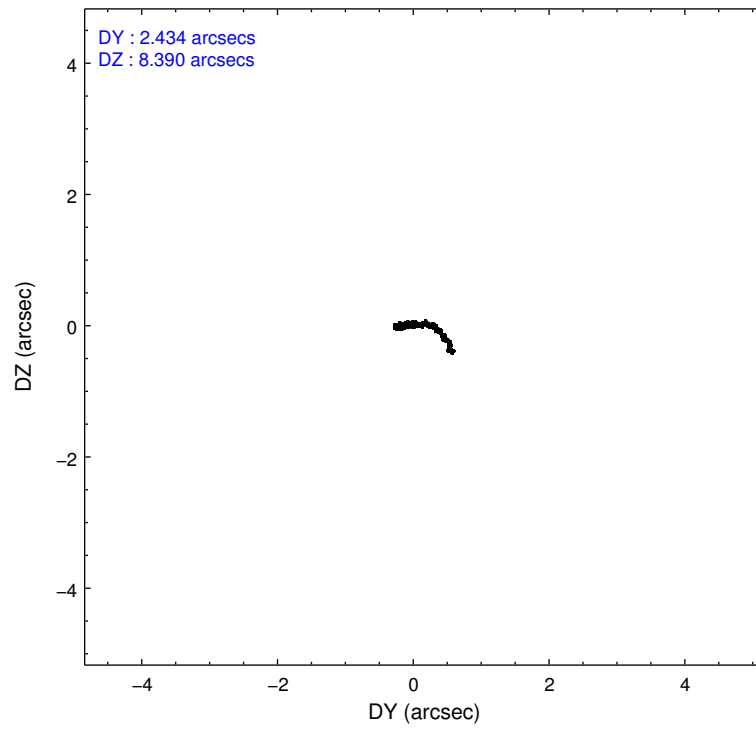
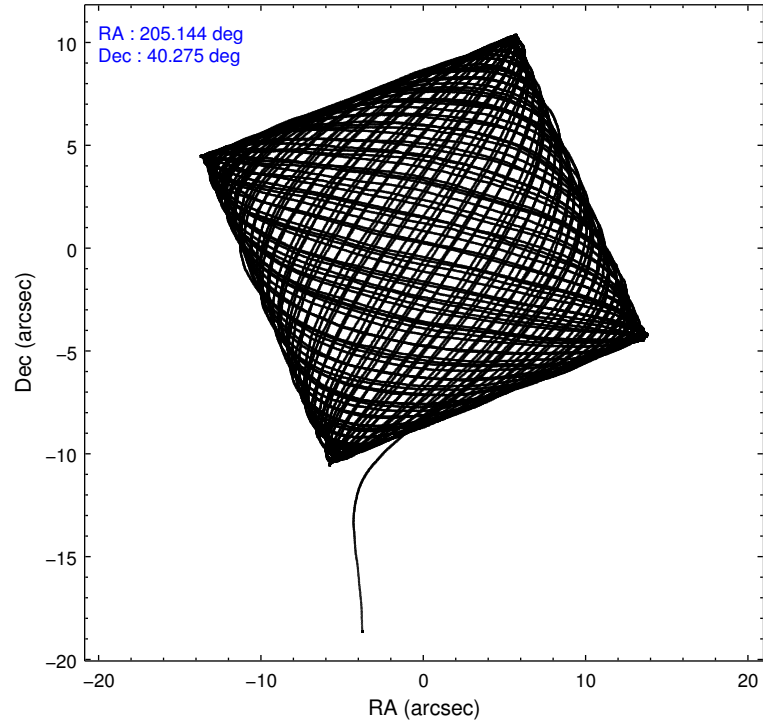
	ccd 4	ccd 5	ccd 6	ccd 7	ccd 8
level 1 events	251502	320546	225877	210077	274753
rejected events	227701	125752	201104	104860	212224
rejected %	90%	39%	89%	49%	77%

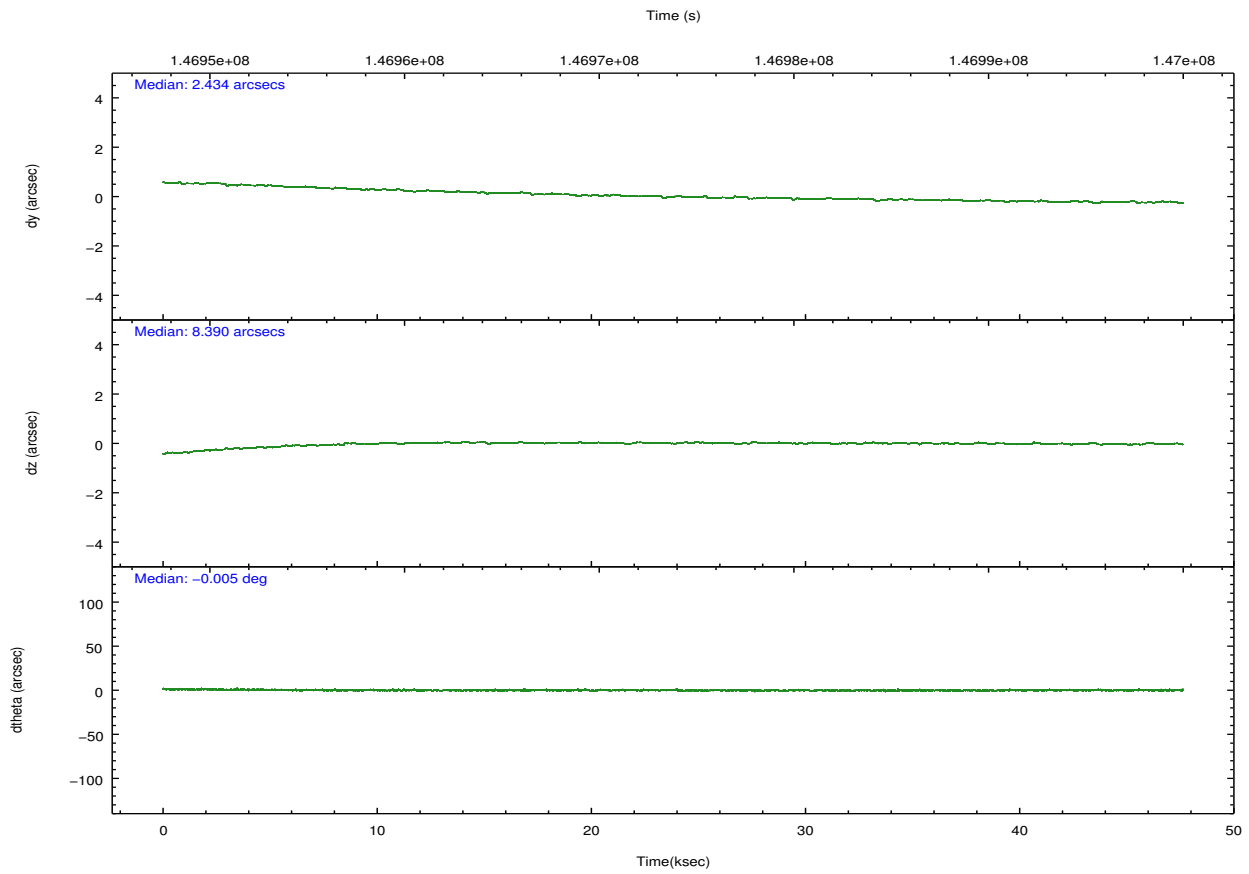
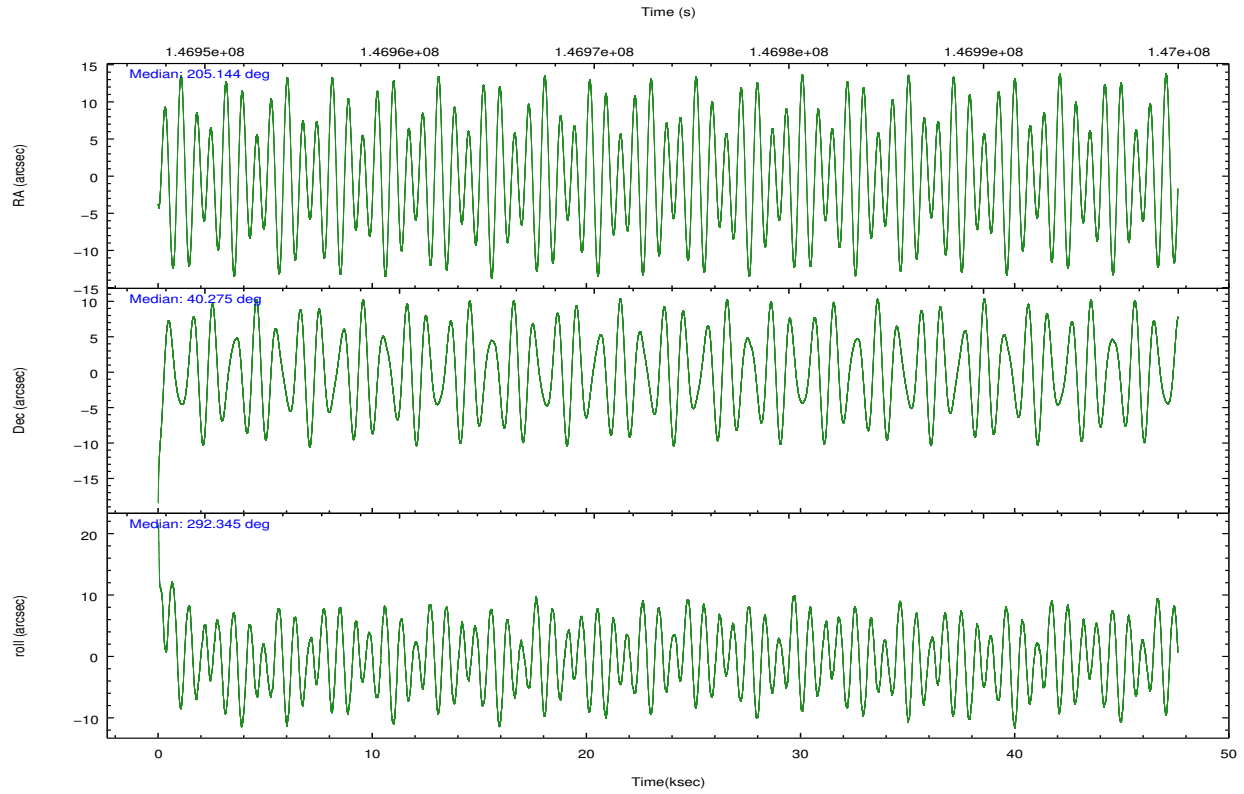
	ccd 4	ccd 5	ccd 6	ccd 7	ccd 8
grade 0 events	9770	37416	10113	12242	17702
	3%	11%	4%	5%	6%
grade 1 events	164	275	117	218	178
	0%	0%	0%	0%	0%
grade 2 events	5305	56759	5024	22449	14018
	2%	17%	2%	10%	5%
grade 3 events	2643	12551	2587	10426	7350
	1%	3%	1%	4%	2%
grade 4 events	2595	12009	2595	10234	6876
	1%	3%	1%	4%	2%
grade 5 events	6761	23065	7342	22401	10709
	2%	7%	3%	10%	3%
grade 6 events	3627	77502	4602	50722	17009
	1%	24%	2%	24%	6%
grade 7 events	220637	100969	193497	81385	200911
	87%	31%	85%	38%	73%

## 2.2 Compared Parameters

Parameter	Planned	Actual	Parameter	Planned	Actual
Instrument	ACIS	ACIS	Obspar format version number	7	7
Detector	ACIS-45678	ACIS-45678	Obspar file type	PREDICTED	ACTUAL
Grating	NONE	NONE	Obspar update status	NONE	UPDATED
Data mode	VFAINT	VFAINT	Number of optional ACIS chips dropped	0	0
Observation mode	POINTING	POINTING	On-chip summing requested	N	N
[deg] Pointing RA	205.116333	205.1448781618768	Subarray requested	NONE	NONE
[deg] Pointing Dec	40.290993	40.27463053408211	Alternating exposures requested	N	N
[deg] Pointing Roll	292.220561	292.358737032048	[s] Primary exposure time	0.000000	3.1
[mm] SIM focus pos	-0.684267	-0.6828225247311905			
[mm] SIM defocus	0	0.001444936568705701			
[mm] SIM translation stage pos	-190.132523	-190.1400660498719			
[mm] SIM translation stage offset	0	0.00754346686406393			
[s] Observation start time (MET)	146950153.184000	146948957.64294			
Observation start date	2002-08-28T19:28:09	2002-08-28T19:09:17			
[s] Observation end time (MET)	146997608.184000	146998422.60748			
Observation end date	2002-08-29T08:39:04	2002-08-29T08:53:42			
Read mode	TIMED	TIMED			

## 2.3 Aspect



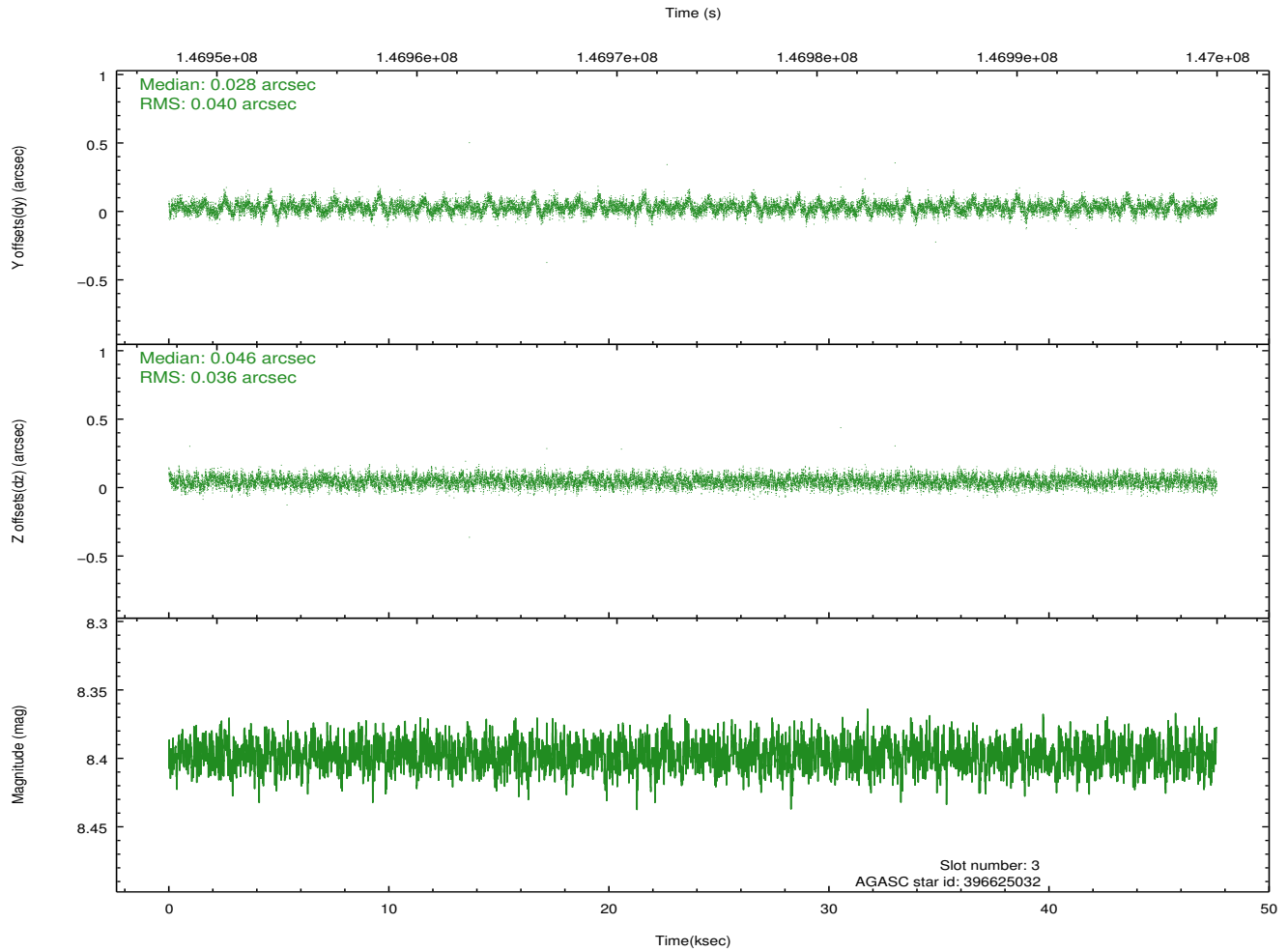
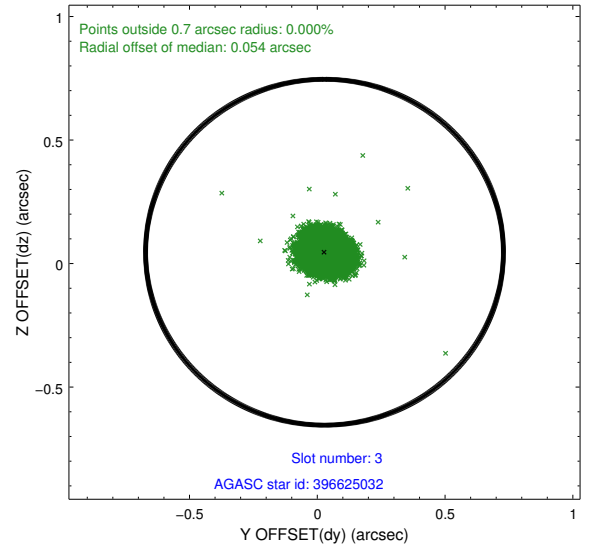
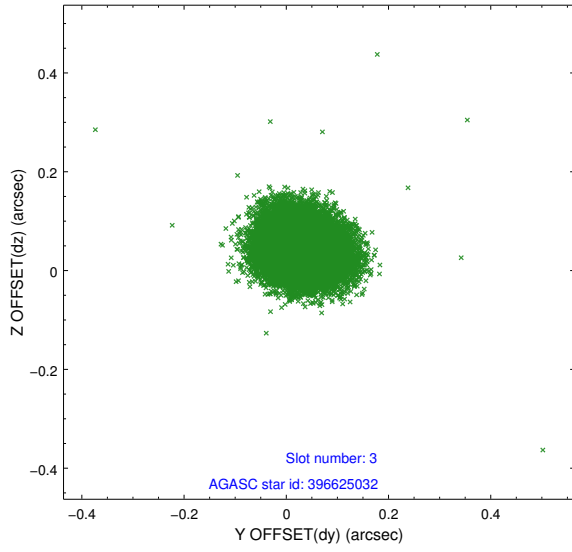


### Slot Statistics

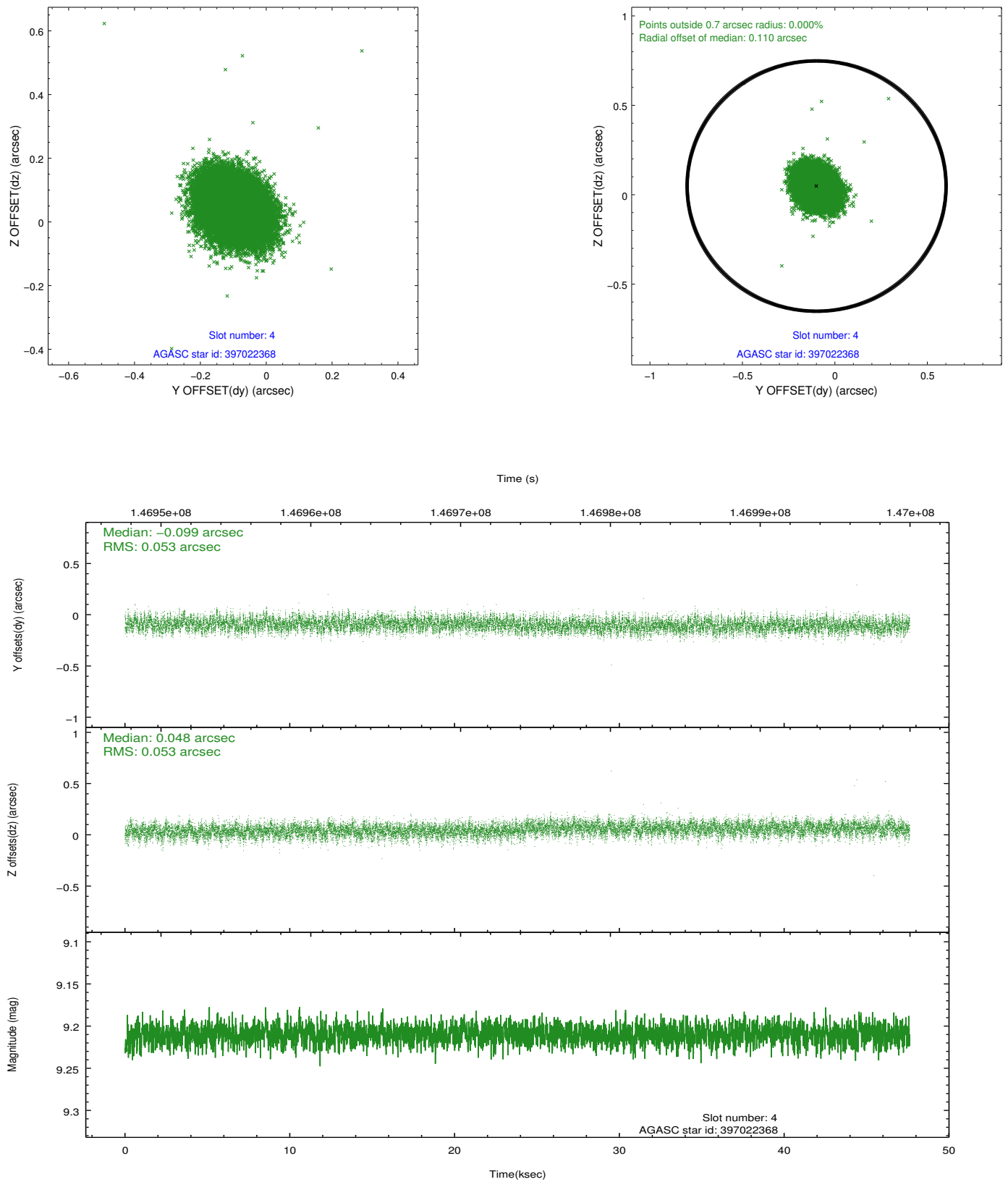
slot	status	id	mag	n_pts	med_dy	med_dz	dr1	dr2	ra	dec	mean_y	mean_z
0	FID	ACIS-S-1	7.19	11615	0.026	-0.000	0.011	0.019	0.000000	0.000000	940.92	-1725.20
1	FID	ACIS-S-5	7.24	11615	-0.006	0.042	0.010	0.017	0.000000	0.000000	-1808.09	172.44
2	FID	ACIS-S-6	7.36	11614	-0.042	-0.031	0.009	0.015	0.000000	0.000000	406.45	816.29
3	GUIDE	396625032	8.40	23223	0.028	0.046	0.057	0.092	205.129971	39.989839	1018.64	-373.95
4	GUIDE	397022368	9.21	23220	-0.099	0.048	0.079	0.129	205.751450	40.620809	-448.47	2058.75
5	GUIDE	396625736	9.30	23220	0.017	-0.112	0.079	0.127	205.460542	39.768240	2101.02	172.09
6	GUIDE	397022400	9.62	23210	-0.008	0.086	0.114	0.185	204.899339	40.078101	483.67	-841.73
7	GUIDE	396629184	9.58	23220	0.055	-0.073	0.110	0.183	204.749436	39.523706	2170.71	-1986.03

## 2.4 Star Slots

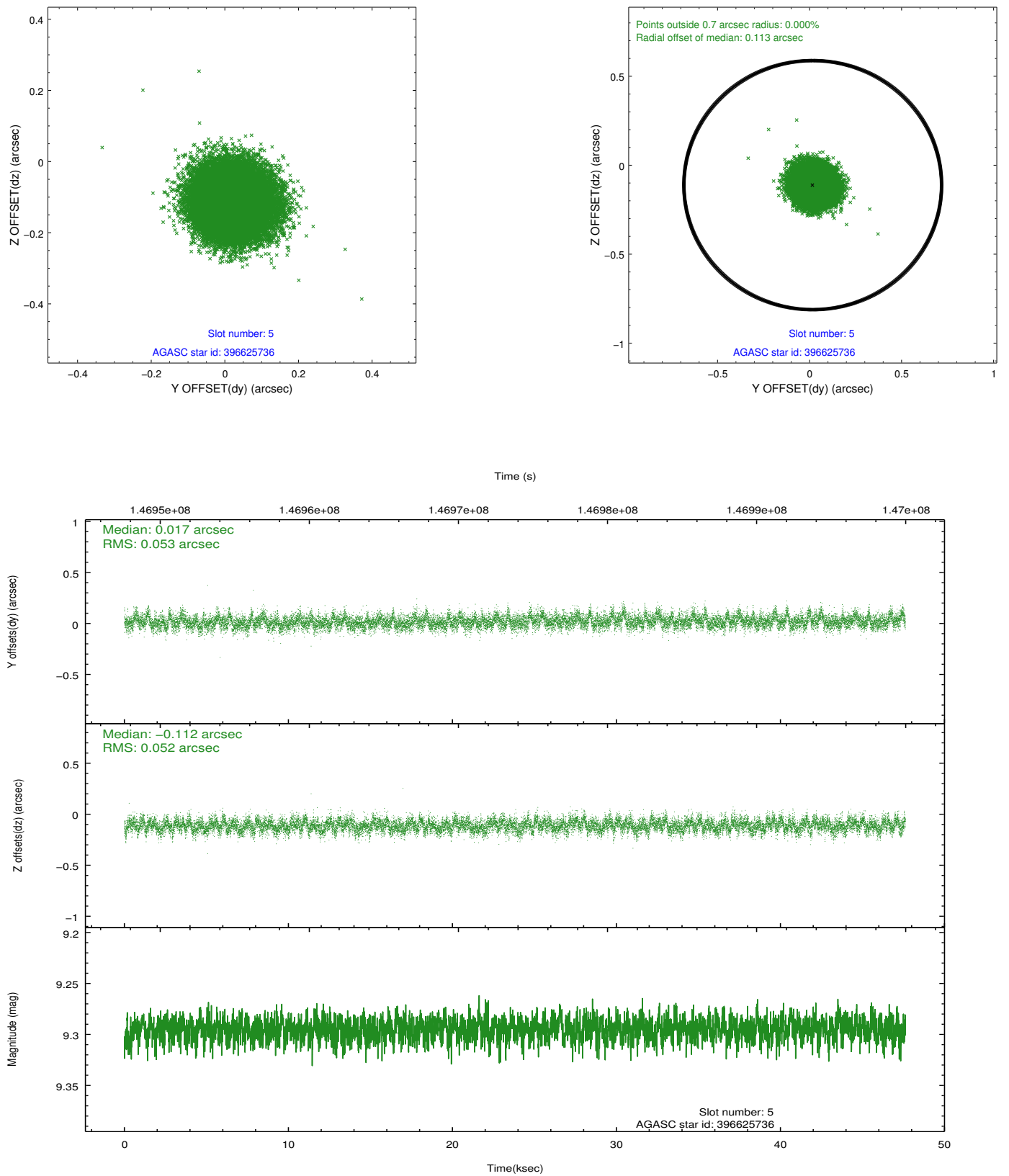
### 2.4.1 Slot 3



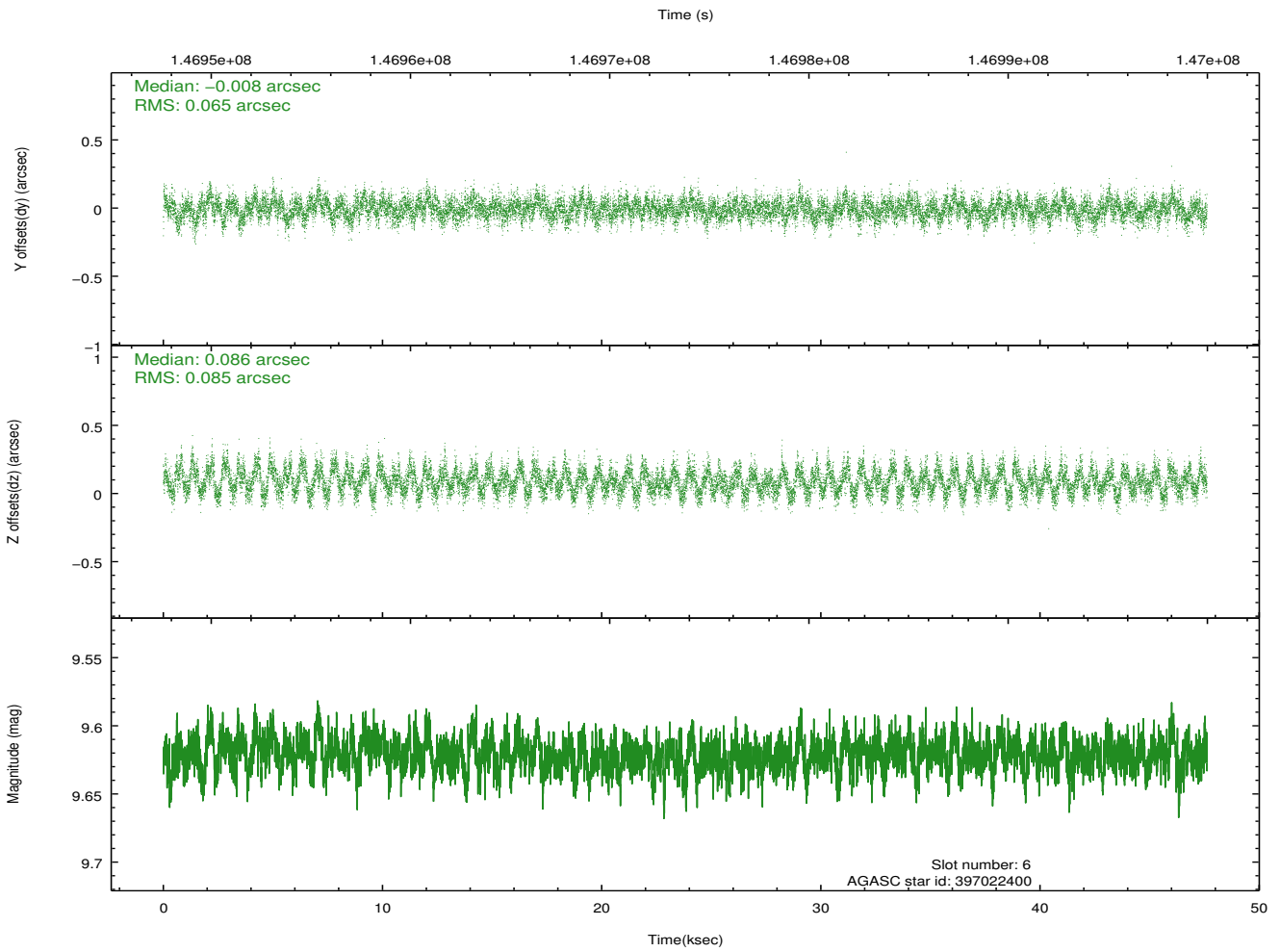
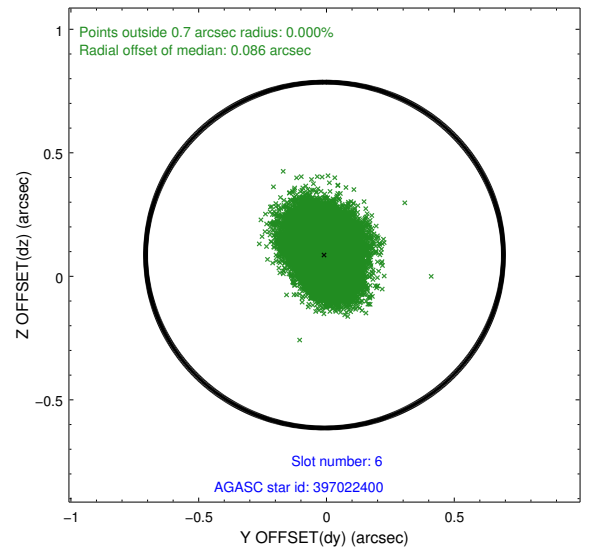
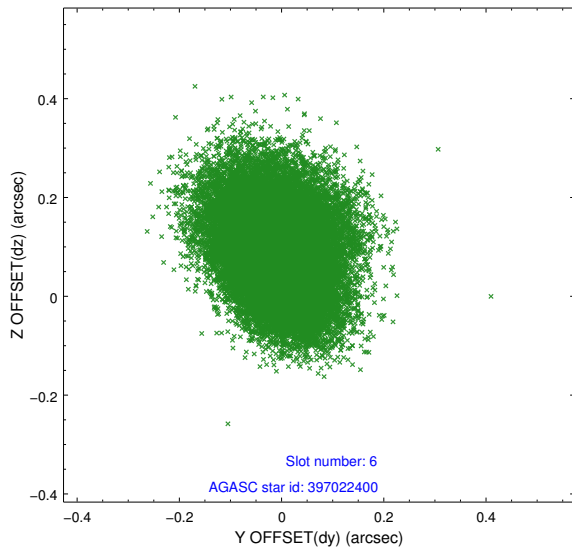
## 2.4.2 Slot 4



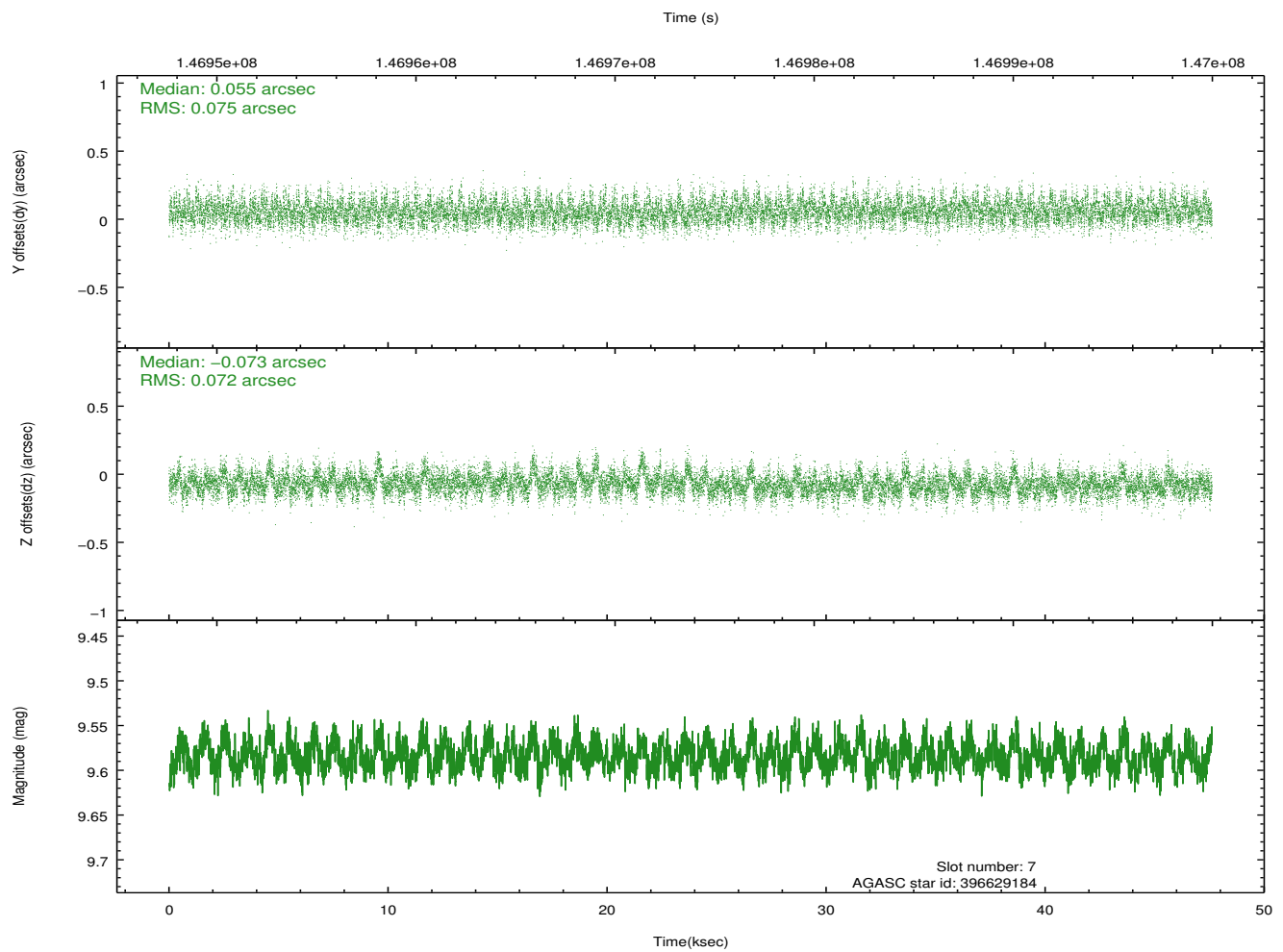
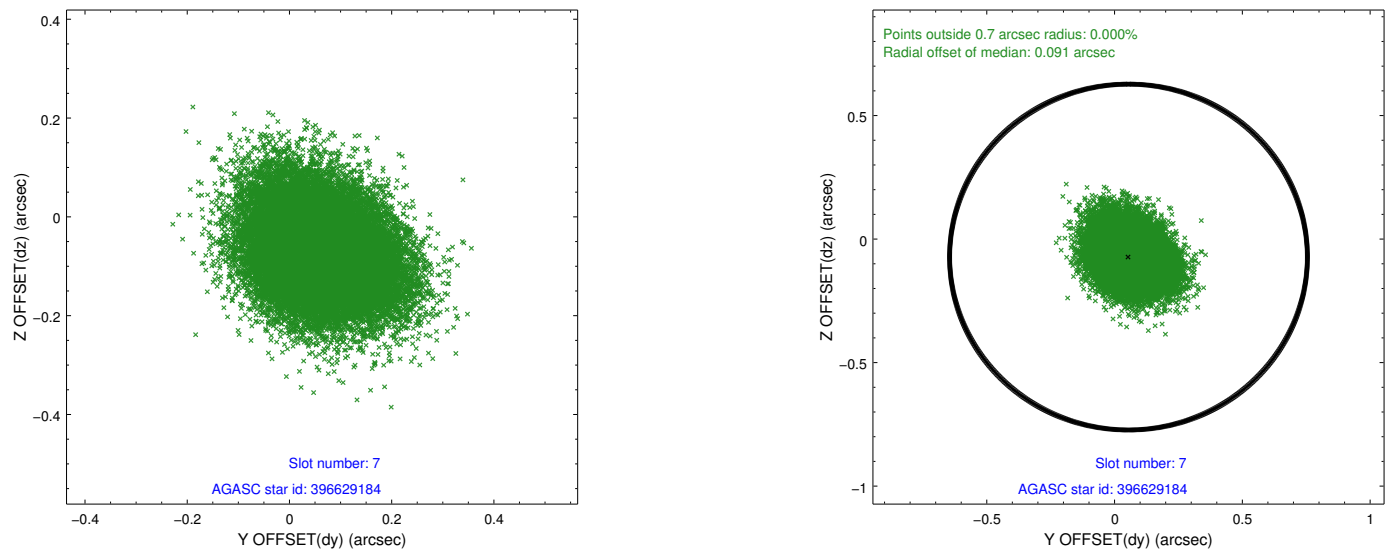
### 2.4.3 Slot 5



### 2.4.4 Slot 6

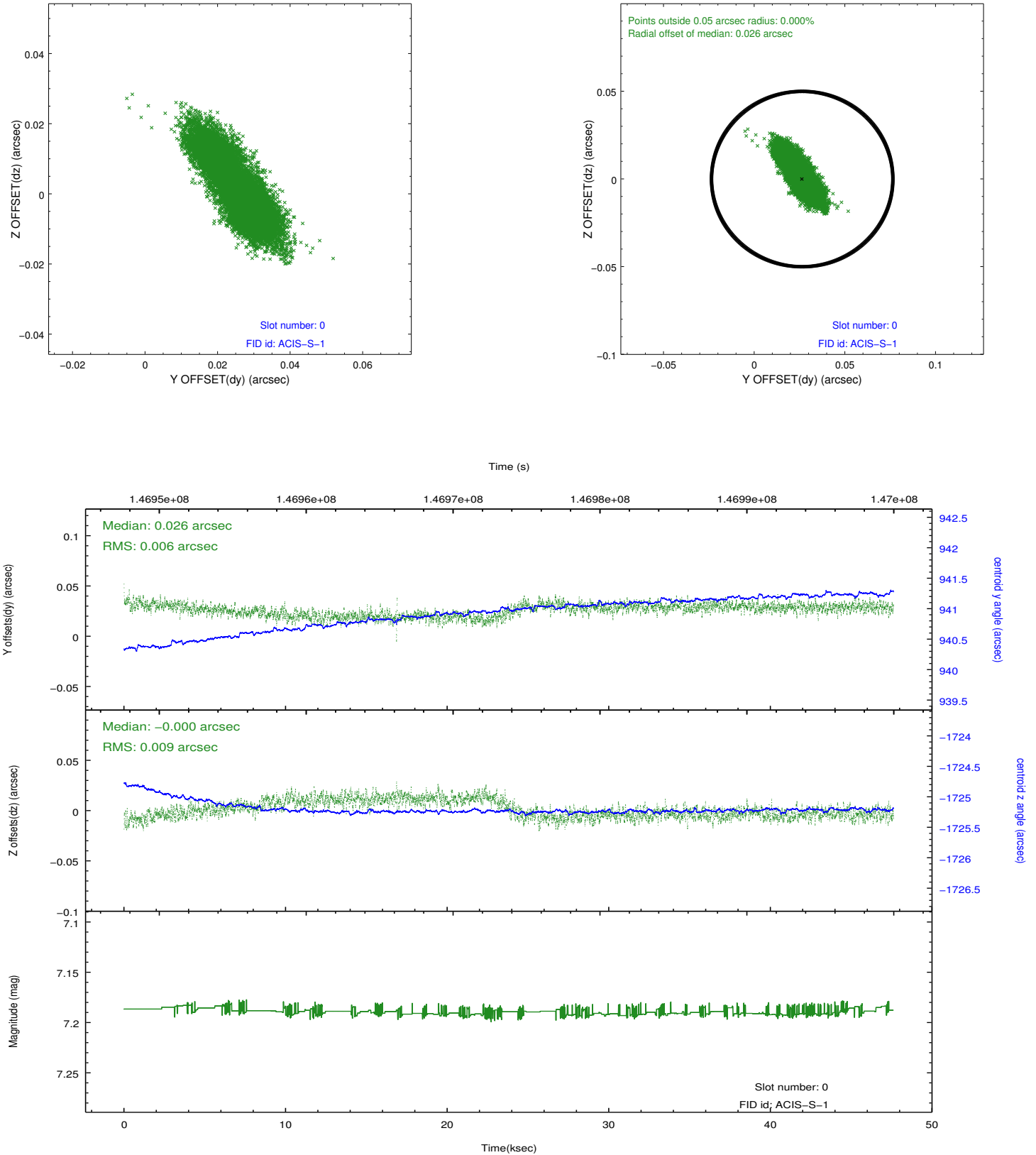


## 2.4.5 Slot 7

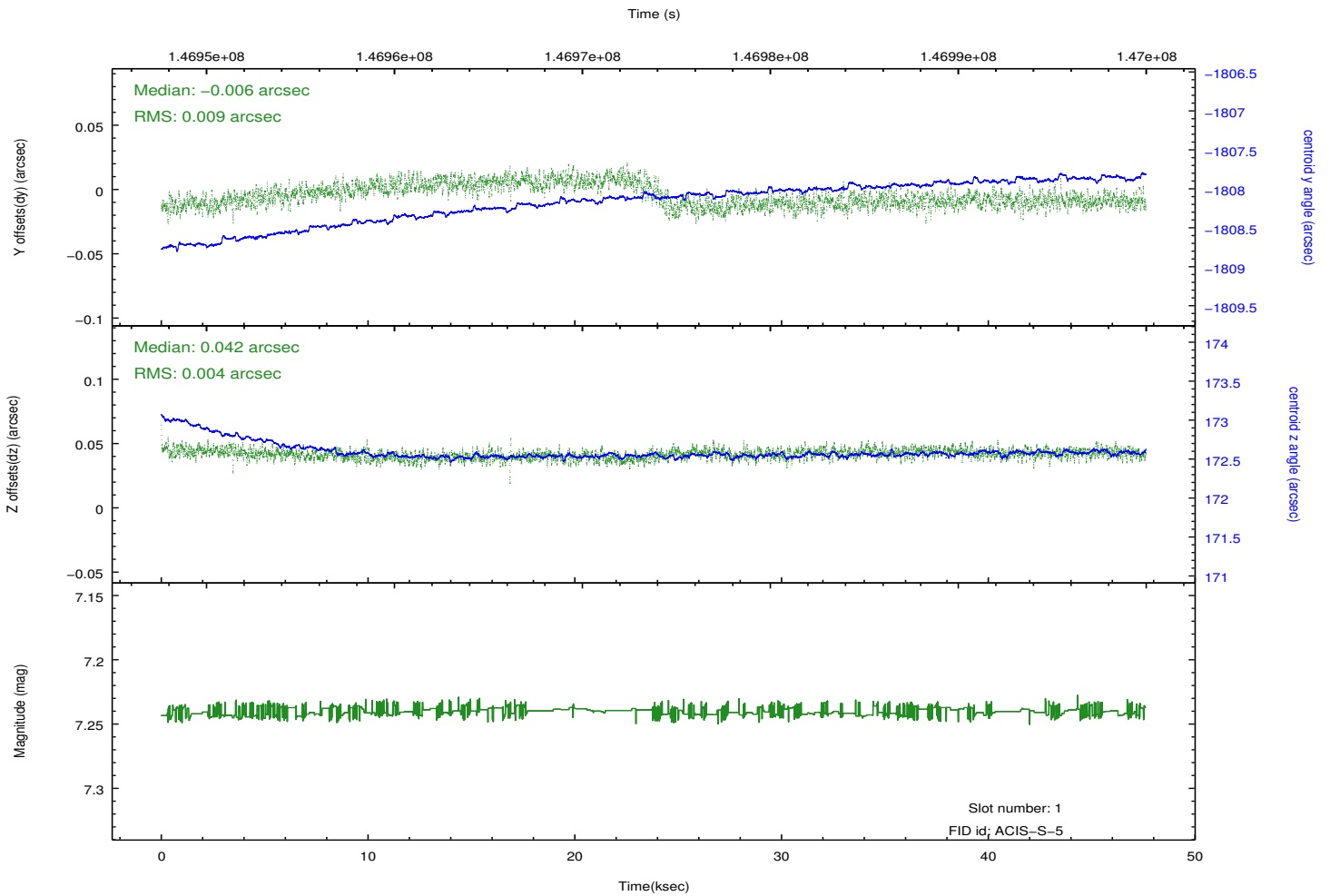
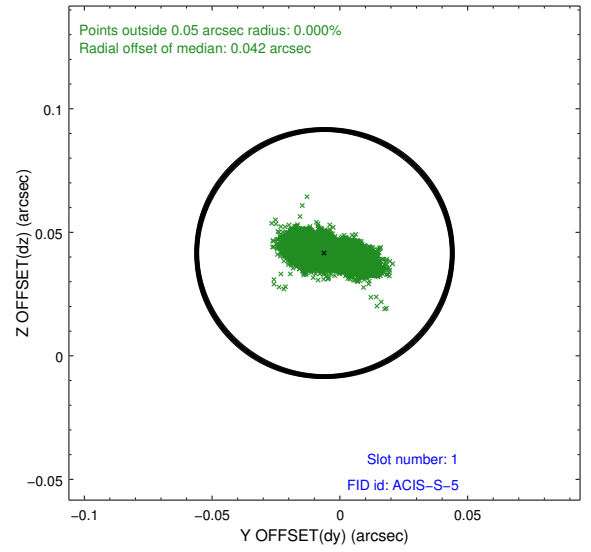
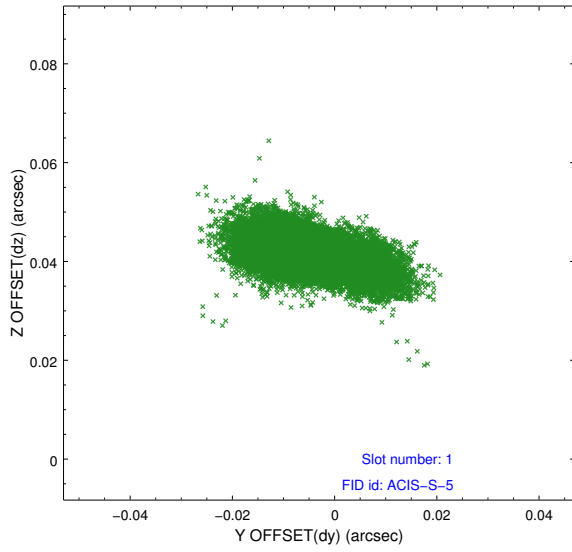


## 2.5 FID Slots

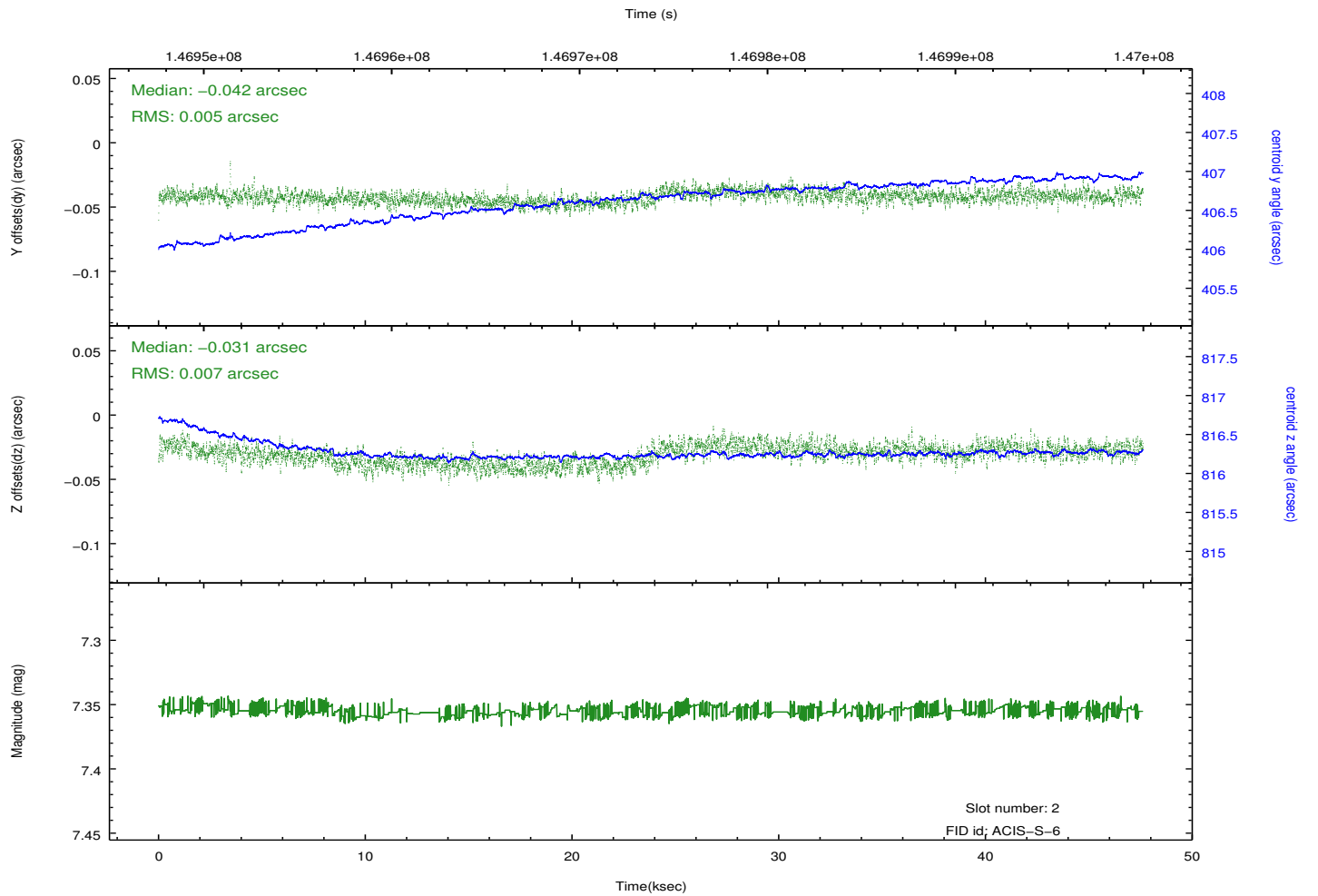
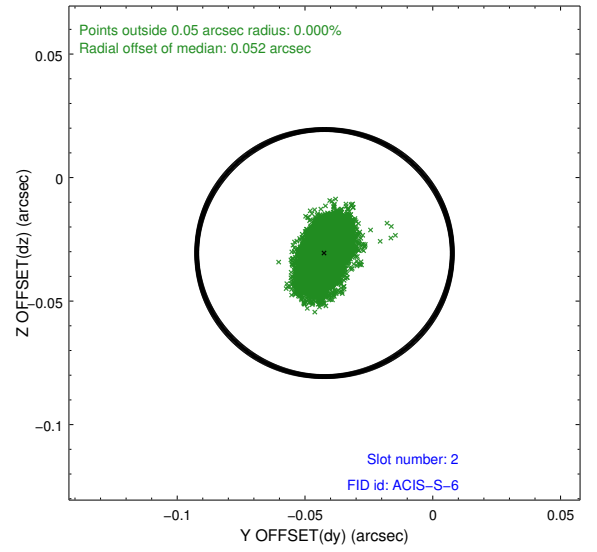
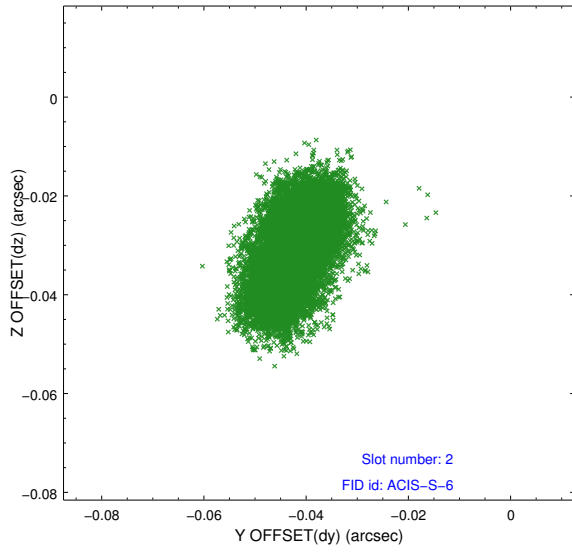
### 2.5.1 Slot 0



## 2.5.2 Slot 1



### 2.5.3 Slot 2



## **A Summary**

### **A.1 Status**

V&V Scientist	Jen Lauer
V&V Date (YYYY-MM-DD)	2012.10.22
V&V Edition	1
V&V Disposition and Status	OK
V&V Charge Time	47.615

### **A.2 Comments**