

# V&V Reference Report

## L2 ASCDS Version : 8.4.5

Observation 3243 - L2 Version 3  
Chandra X-Ray Center

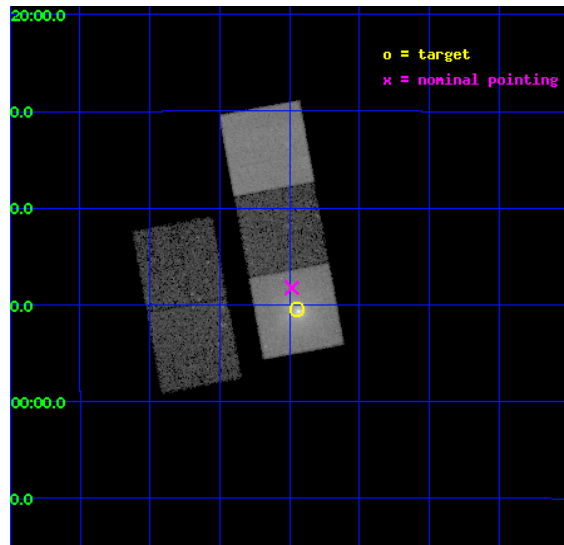
L2 Processing Date : Oct 17 2012

## Contents

<b>1</b>	<b>Front</b>	<b>2</b>
<b>2</b>	<b>OBI</b>	<b>3</b>
2.1	OBI . . . . .	3
2.1.1	Images . . . . .	3
2.1.2	Bias . . . . .	3
2.1.3	Parameters . . . . .	4
2.1.4	Events . . . . .	4
2.2	Compared Parameters . . . . .	5
2.3	Aspect . . . . .	6
2.4	Star Slots . . . . .	9
2.4.1	Slot 3 . . . . .	9
2.4.2	Slot 4 . . . . .	10
2.4.3	Slot 5 . . . . .	11
2.4.4	Slot 6 . . . . .	12
2.4.5	Slot 7 . . . . .	13
2.5	FID Slots . . . . .	14
2.5.1	Slot 0 . . . . .	14
2.5.2	Slot 1 . . . . .	15
2.5.3	Slot 2 . . . . .	16
<b>A</b>	<b>Summary</b>	<b>17</b>
A.1	Status . . . . .	17
A.2	Comments . . . . .	17

# 1 Front

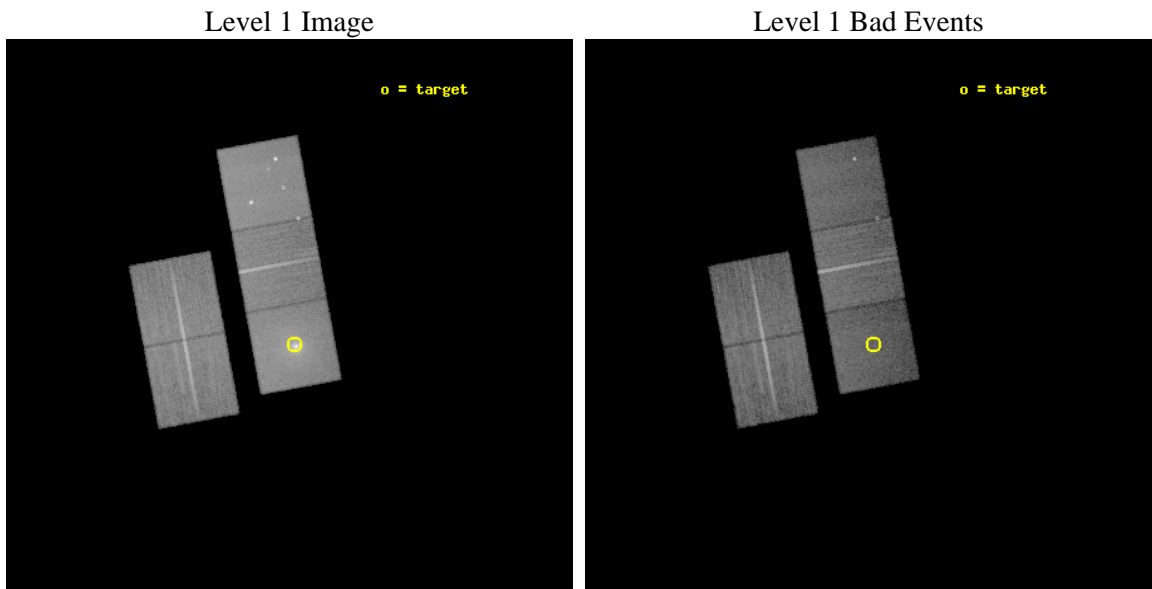
seq_num	800243	Sequence number
obs_id	3243	Observation id
title	THE INTRAGROUP MEDIUM IN X-RAY LUMINOUS GALAXY GROUPS: RADIO SOURCES AND THE DISTRIBUTION OF HEAVY ELEMENTS	Proposal title
observer	Dr. Jan Vrtilik	Principal investigator
object	SS2B153	Source name
dtcycle	0	&#160
cycle	P	events from which exps? Prim/Second/Both
ra_targ	162.612083	Observer's specified target RA [deg]
dec_targ	-12.840556	Observer's specified target Dec [deg]
ra_nom	162.62084241844	Nominal RA [deg]
dec_nom	-12.804140660235	Nominal Dec [deg]
roll_nom	79.555642037744	Nominal Roll [deg]
revision	3	Processing version of data
ontime	29905.69994247	Sum of GTIs [s]
livetime	29514.959956465	Livetime [s]
ontime2	29902.558982223	Sum of GTIs [s]
ontime3	29899.418002069	Sum of GTIs [s]
ontime5	29905.69994247	Sum of GTIs [s]
ontime6	29905.69994247	Sum of GTIs [s]
ontime7	29905.69994247	Sum of GTIs [s]
l2events	256694	Number of level 2 events



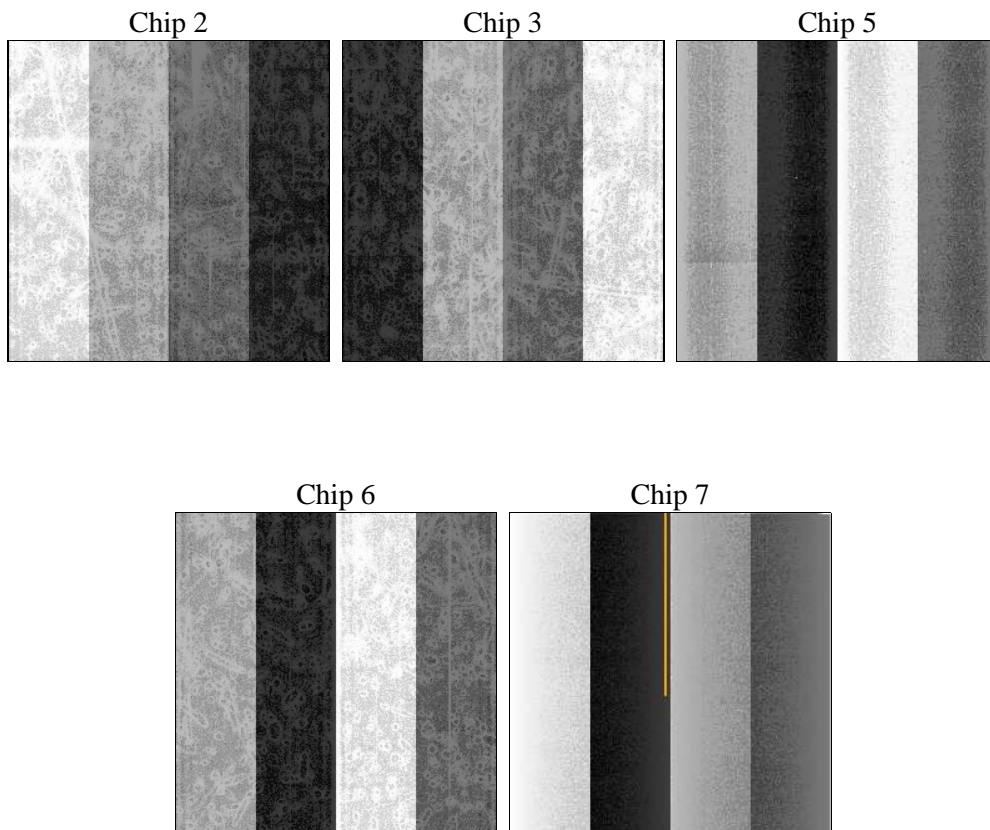
## 2 OBI

### 2.1 OBI

#### 2.1.1 Images



#### 2.1.2 Bias



### 2.1.3 Parameters

obi_num	0	Obi number	sched_exp_time	29800.000000	[s] Scheduled observation exposure time
ascdsver	8.4.5	Processing system revision	ontime	29905.69994247	Sum of GTIs [s]
caldbver	4.5.2	&#160	ontime2	29902.558982223	Sum of GTIs [s]
date	2012-10-17T12:21:25	Date and time of file creation	ontime3	29899.418002069	Sum of GTIs [s]
revision	3	Processing version of data	ontime5	29905.69994247	Sum of GTIs [s]
			ontime6	29905.69994247	Sum of GTIs [s]
			ontime7	29905.69994247	Sum of GTIs [s]
			l1events	875918	Number of level 1 events

### 2.1.4 Events

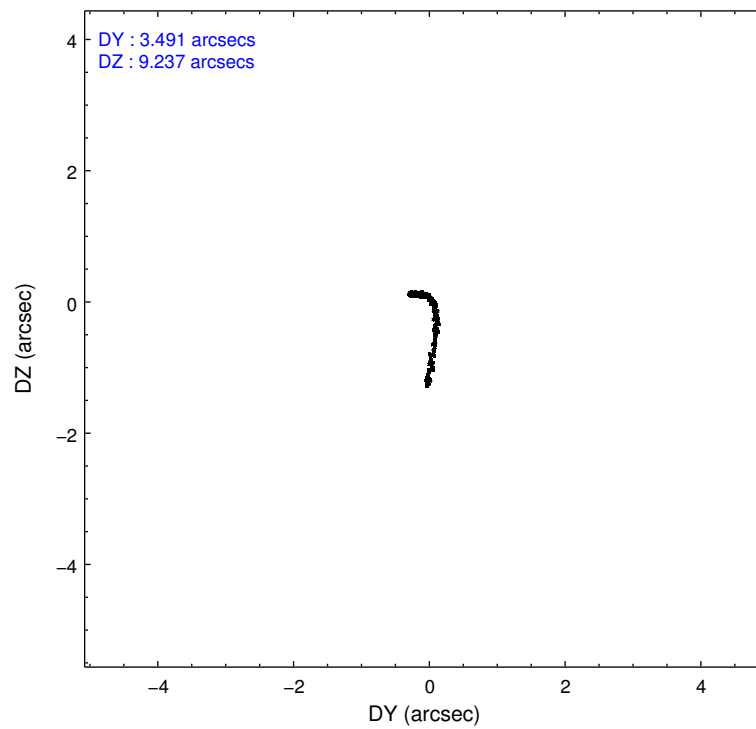
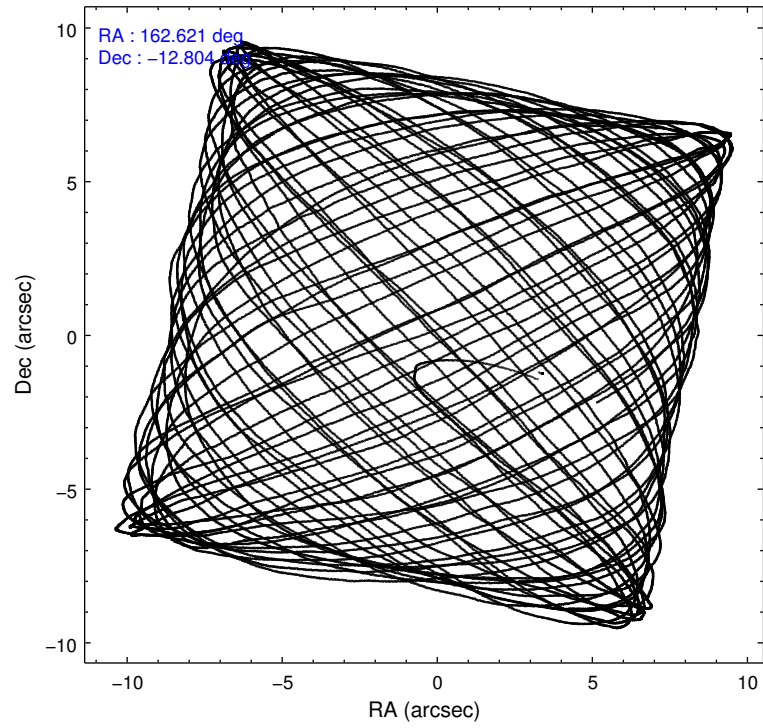
	ccd 2	ccd 3	ccd 5	ccd 6	ccd 7
level 1 events	152681	151922	204036	150364	216915
rejected events	138111	137772	100160	133878	88070
rejected %	90%	90%	49%	89%	40%

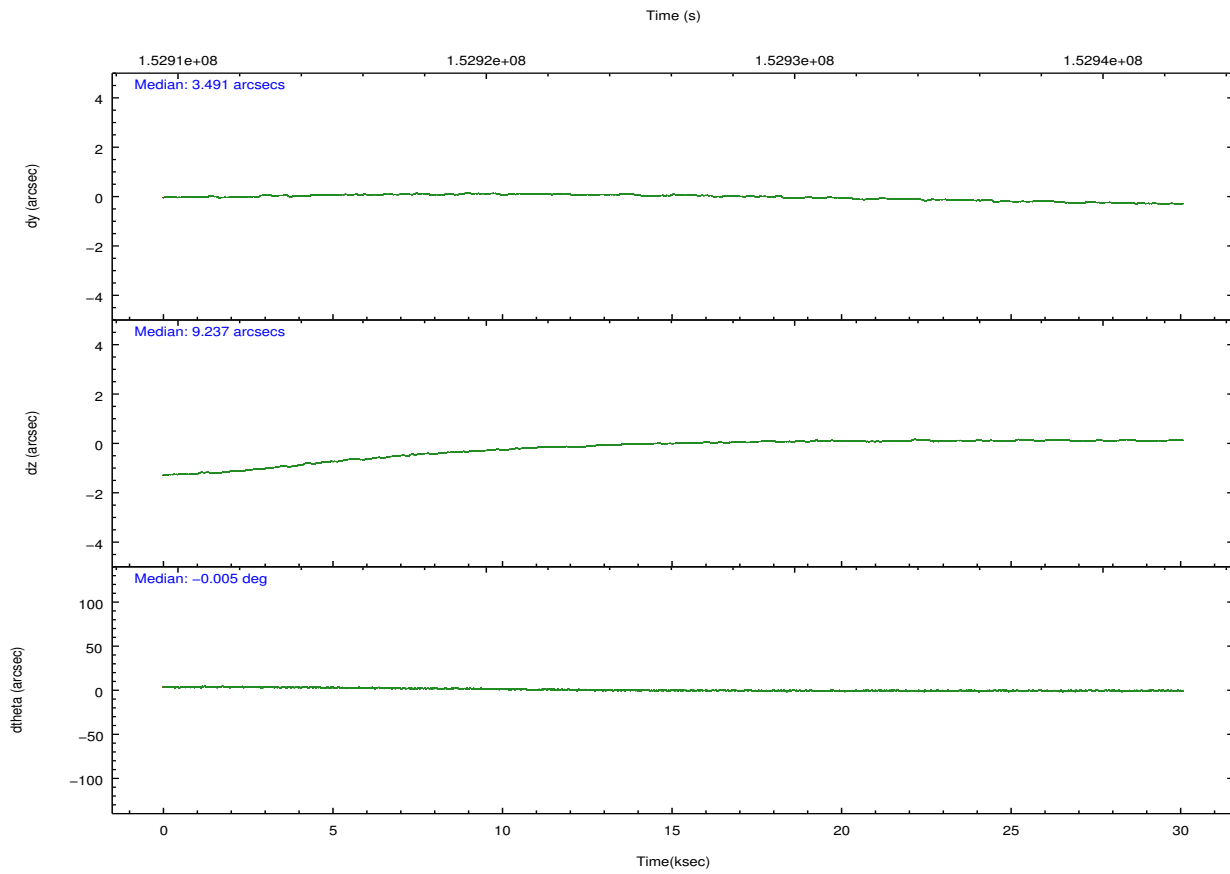
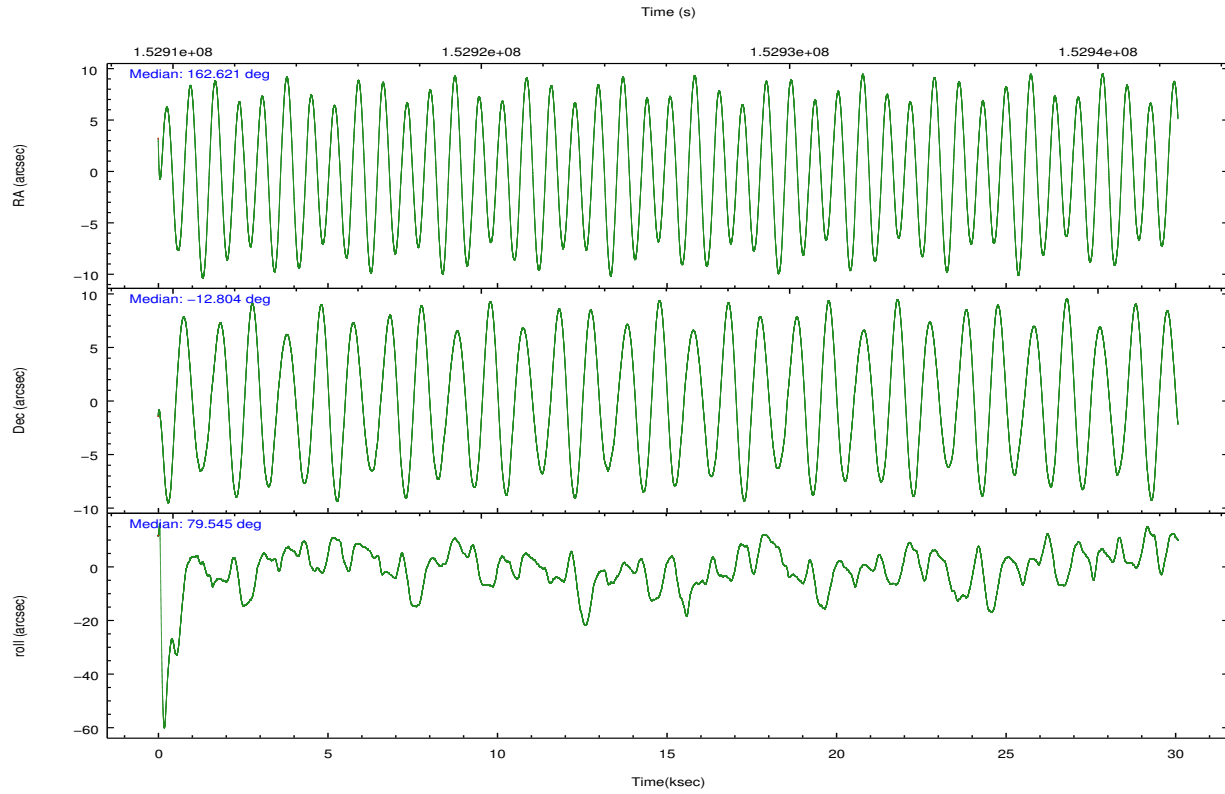
	ccd 2	ccd 3	ccd 5	ccd 6	ccd 7
grade 0 events	5386	5226	15302	6318	25968
	3%	3%	7%	4%	11%
grade 1 events	75	84	1503	67	135
	0%	0%	0%	0%	0%
grade 2 events	3225	2879	28378	3352	29498
	2%	1%	13%	2%	13%
grade 3 events	1717	1687	4950	1791	13676
	1%	1%	2%	1%	6%
grade 4 events	1636	1691	4768	1739	13567
	1%	1%	2%	1%	6%
grade 5 events	4750	5709	16309	5916	17625
	3%	3%	7%	3%	8%
grade 6 events	2607	2667	50485	3292	46149
	1%	1%	24%	2%	21%
grade 7 events	133285	131979	82341	127889	70297
	87%	86%	40%	85%	32%

## 2.2 Compared Parameters

Parameter	Planned	Actual	Parameter	Planned	Actual
Instrument	ACIS	ACIS	Obspar format version number	7	7
Detector	ACIS-23567	ACIS-23567	Obspar file type	PREDICTED	ACTUAL
Grating	NONE	NONE	Obspar update status	NONE	UPDATED
Data mode	VFAINT	VFAINT	Number of optional ACIS chips dropped	0	0
Observation mode	POINTING	POINTING	On-chip summing requested	N	N
[deg] Pointing RA	162.630522	162.6208424184433	Subarray requested	NONE	NONE
[deg] Pointing Dec	-12.829675	-12.80414066023497	Alternating exposures requested	N	N
[deg] Pointing Roll	79.401133	79.55564203774372	[s] Primary exposure time	0.000000	3.1
[mm] SIM focus pos	-0.684267	-0.6828225247311905			
[mm] SIM defocus	0	0.001444936568705701			
[mm] SIM translation stage pos	-190.132523	-190.1400660498719			
[mm] SIM translation stage offset	0	0.00754346686406393			
[s] Observation start time (MET)	152911291.184000	152910271.27735			
Observation start date	2002-11-05T19:20:27	2002-11-05T19:04:31			
[s] Observation end time (MET)	152941091.184000	152941665.49115			
Observation end date	2002-11-06T03:37:07	2002-11-06T03:47:45			
Read mode	TIMED	TIMED			

## 2.3 Aspect



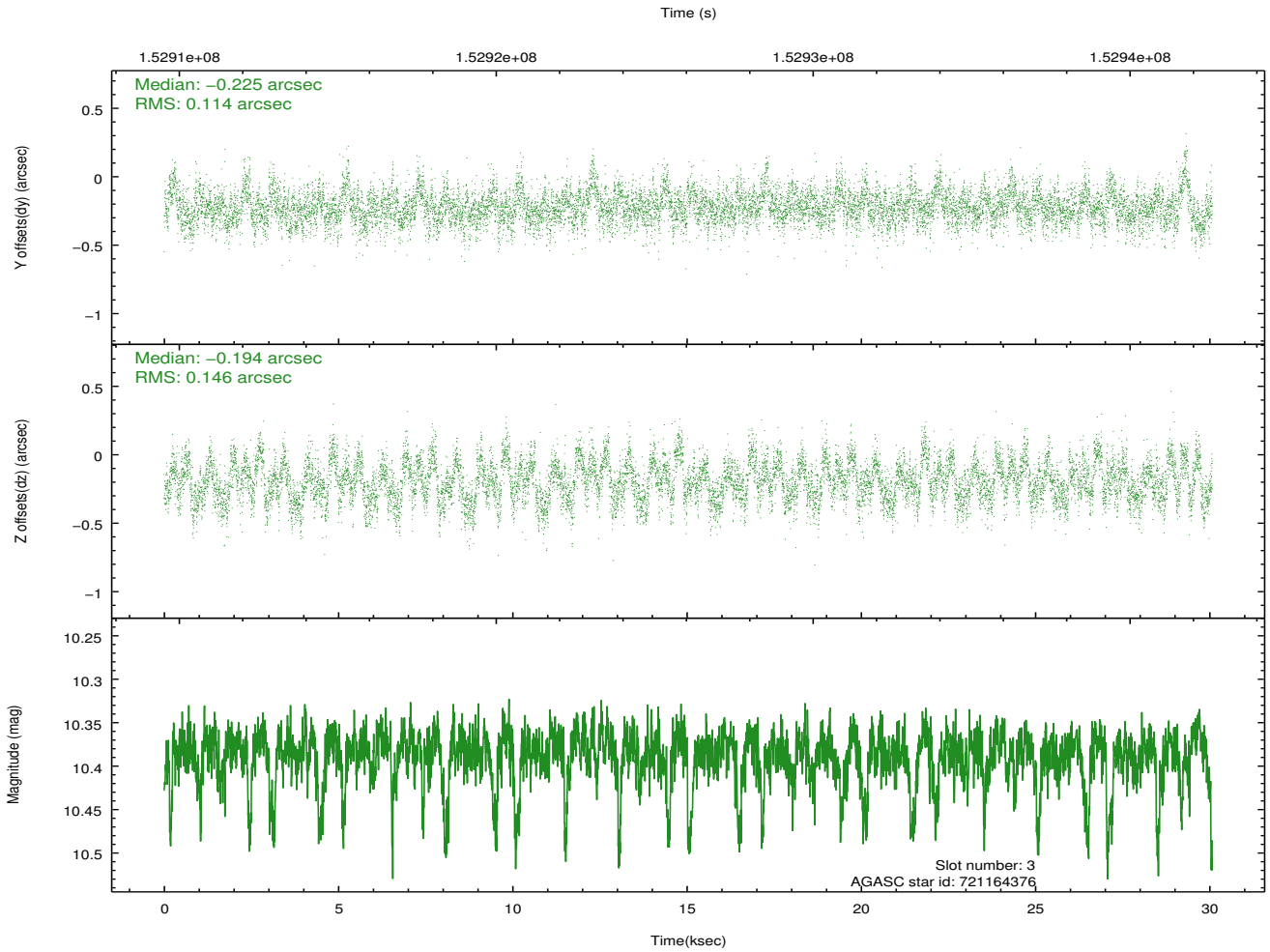
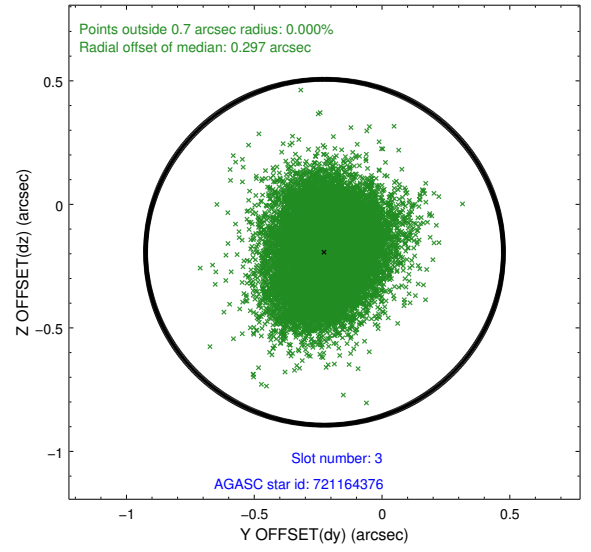
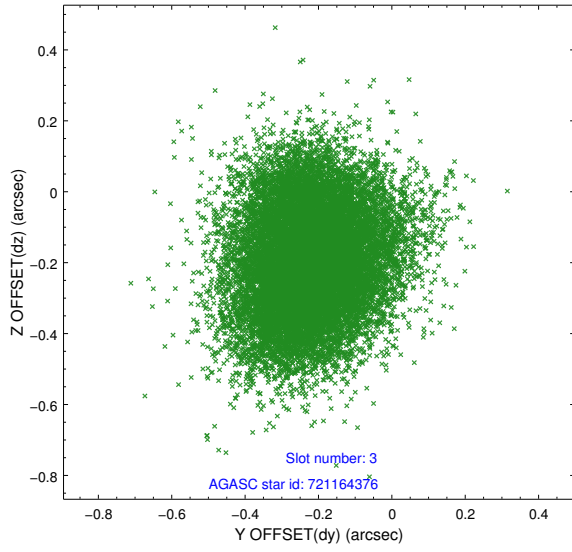


### Slot Statistics

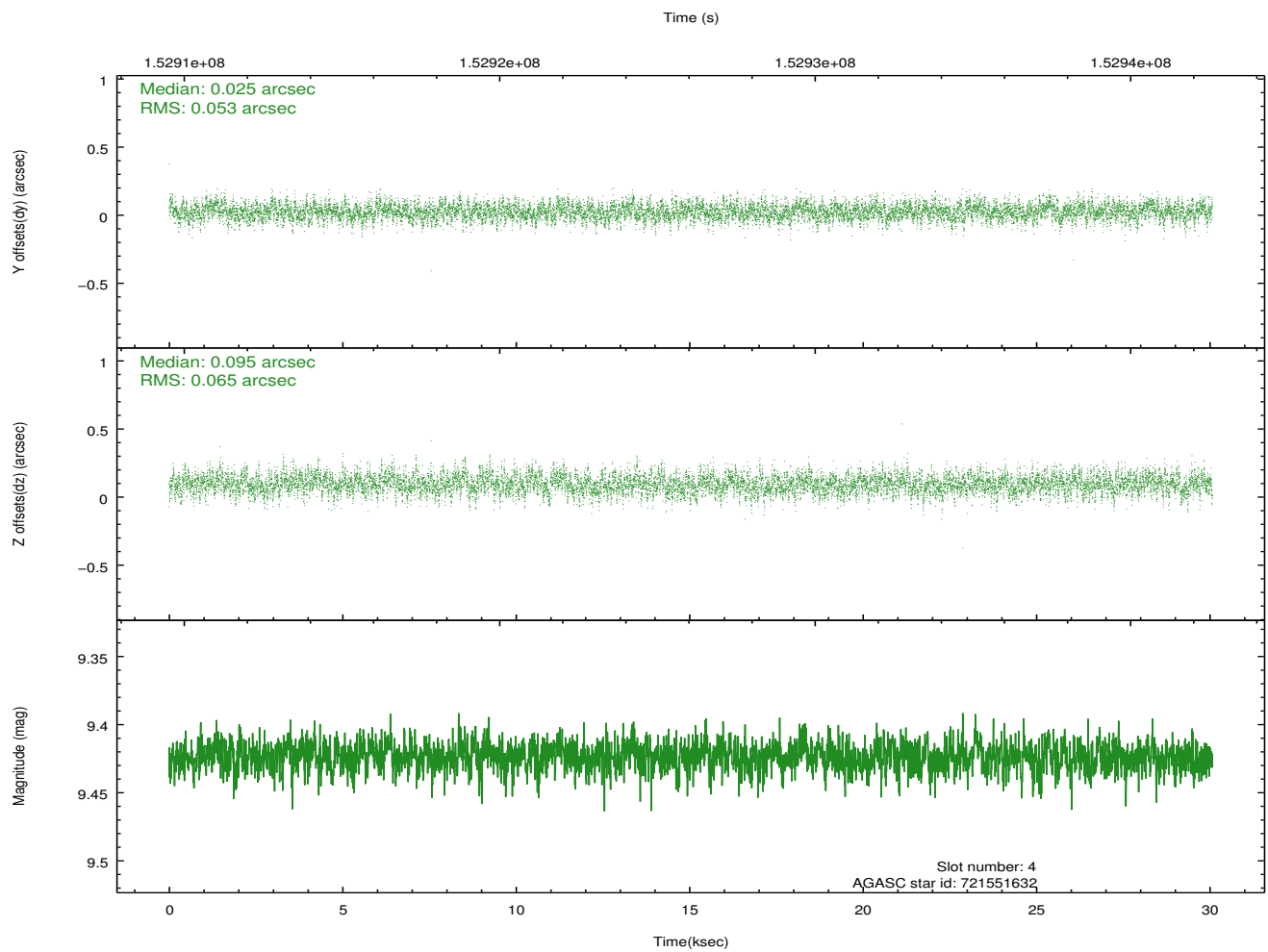
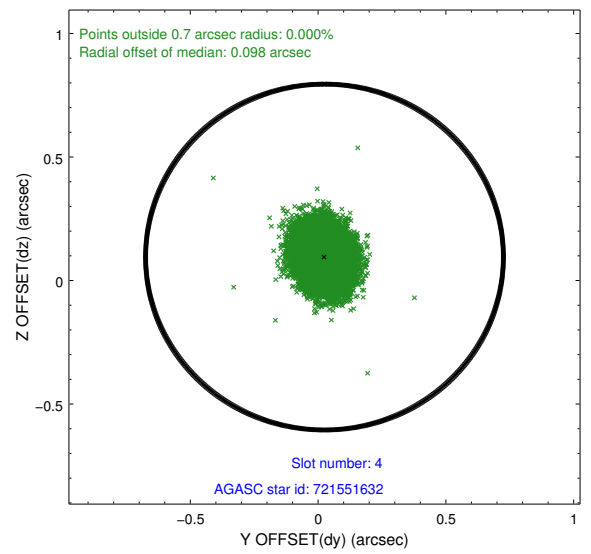
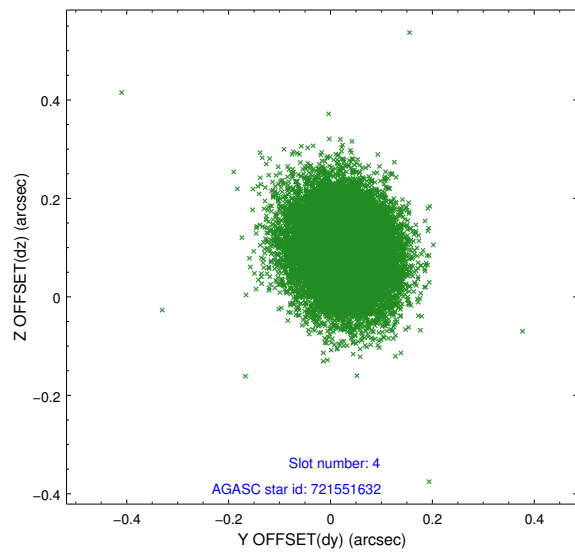
slot	status	id	mag	n_pts	med_dy	med_dz	dr1	dr2	ra	dec	mean_y	mean_z
0	FID	ACIS-S-2	7.11	7335	-0.029	-0.008	0.016	0.034	0.000000	0.000000	-756.13	-1730.25
1	FID	ACIS-S-4	7.20	7336	0.024	0.017	0.022	0.044	0.000000	0.000000	2157.15	178.20
2	FID	ACIS-S-5	7.24	7336	-0.024	0.003	0.010	0.017	0.000000	0.000000	-1808.89	171.92
3	GUIDE	721164376	10.39	14481	-0.225	-0.194	0.198	0.317	162.237638	-12.107781	2298.89	1837.03
4	GUIDE	721551632	9.42	14665	0.025	0.095	0.089	0.145	162.970801	-13.021309	-458.56	-1300.55
5	GUIDE	721551544	10.06	14382	0.153	-0.254	0.127	0.208	162.508073	-13.351836	-1926.09	74.62
6	GUIDE	721555464	9.63	14658	0.197	0.153	0.121	0.199	162.593427	-13.435328	-2166.32	-273.45
7	GUIDE	721551960	9.61	14662	-0.149	0.186	0.134	0.215	163.377327	-12.617125	1231.51	-2438.83

## 2.4 Star Slots

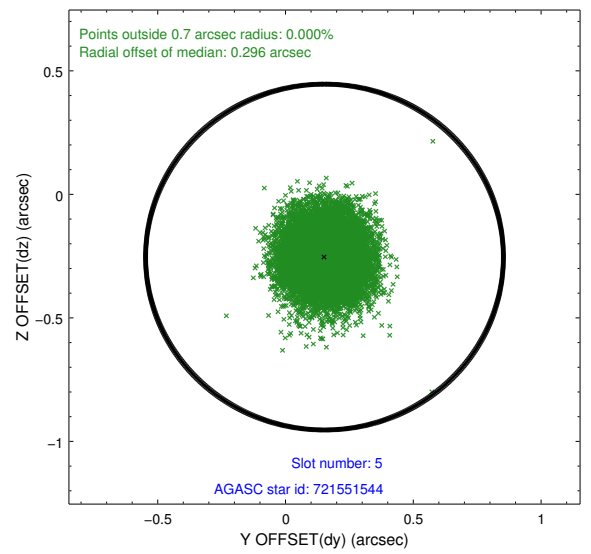
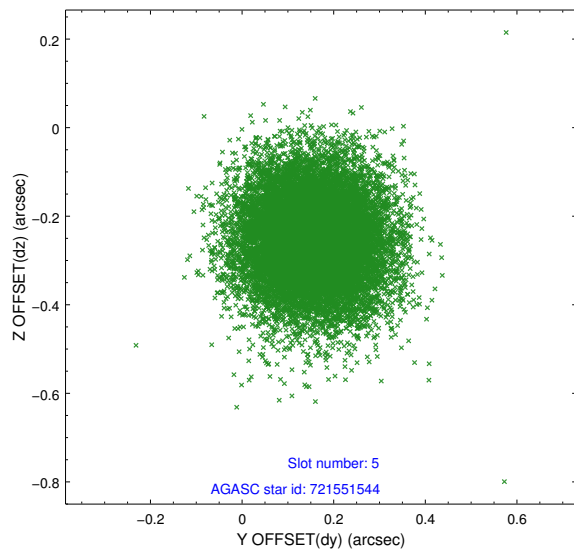
### 2.4.1 Slot 3



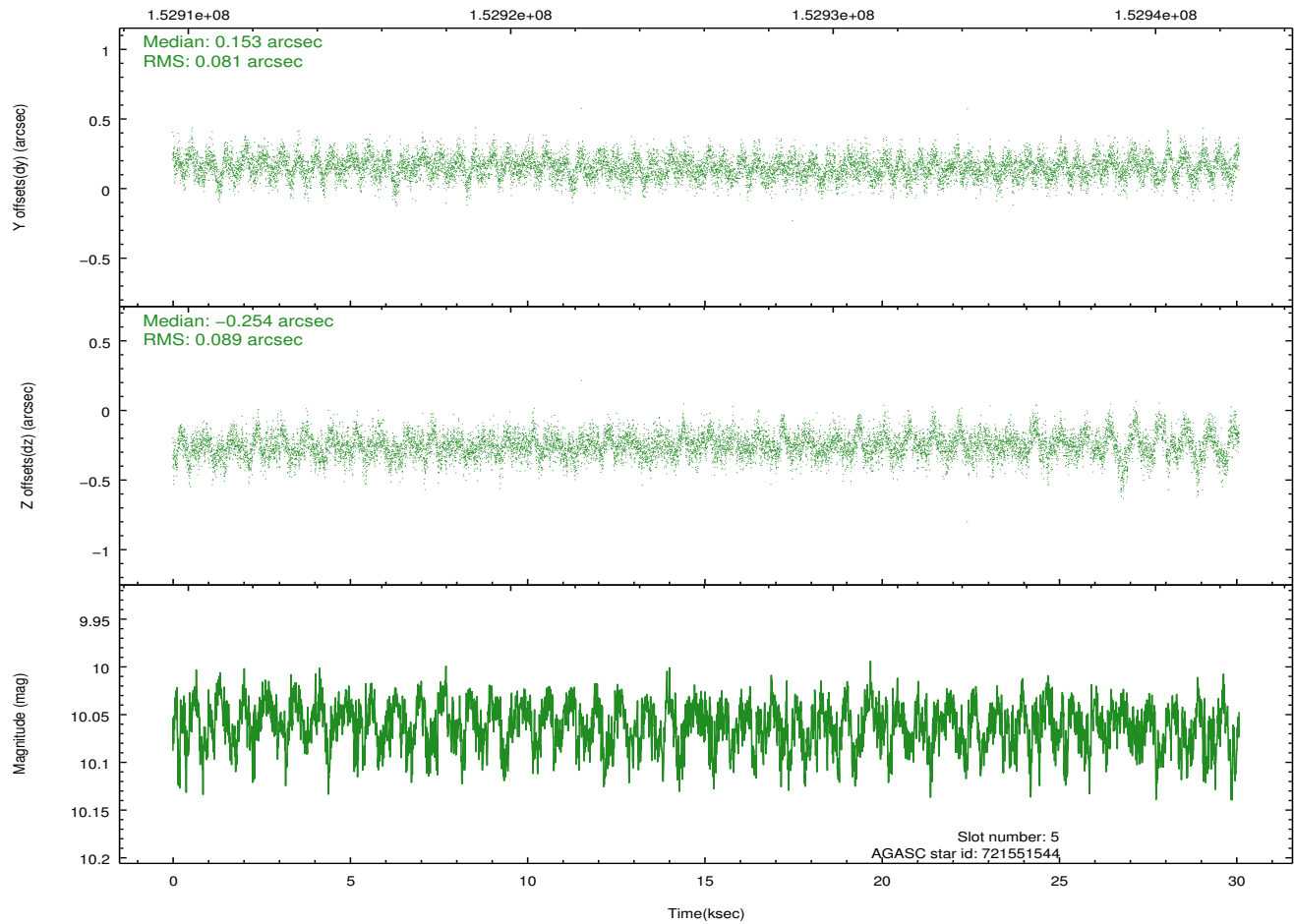
## 2.4.2 Slot 4



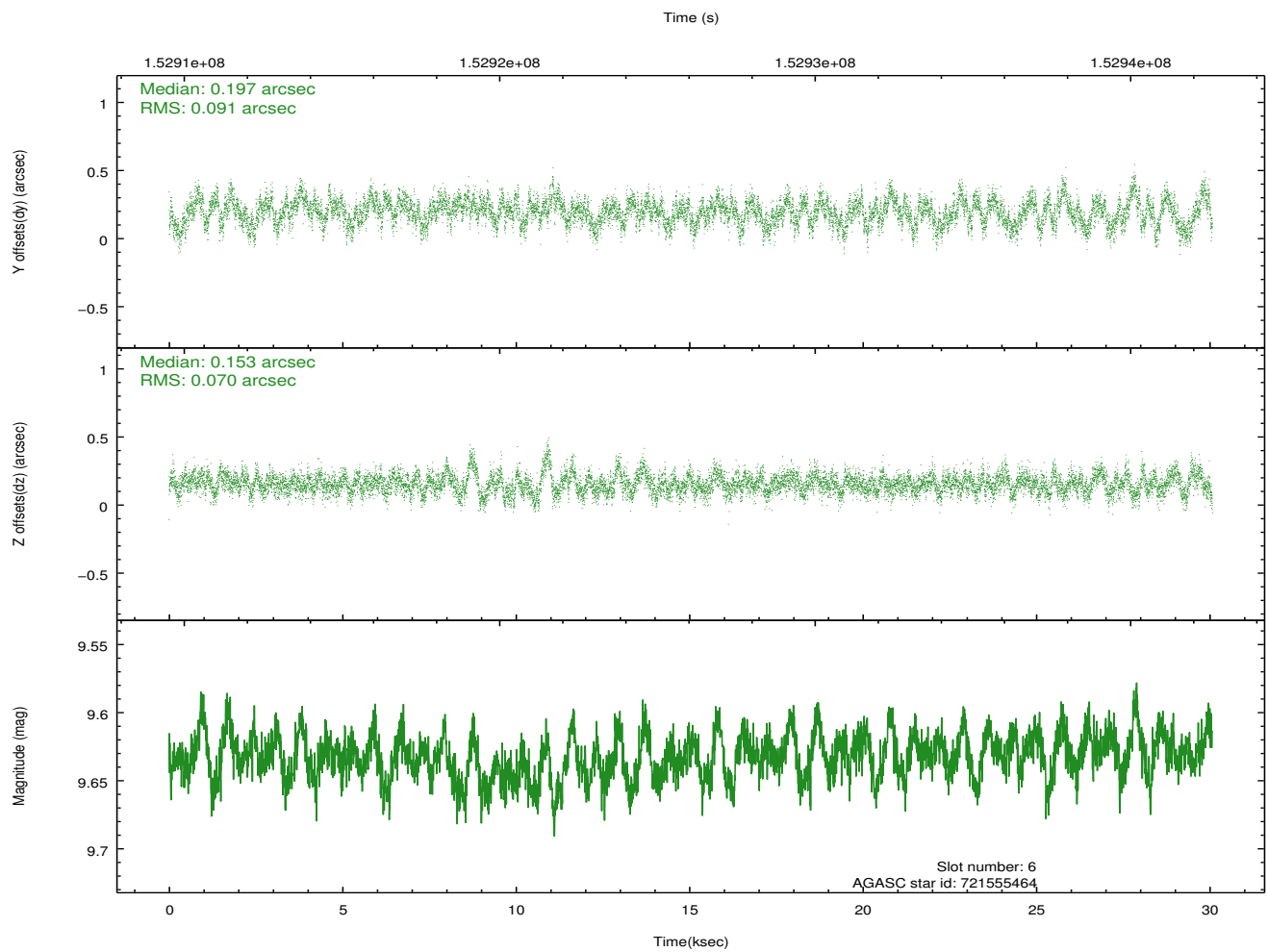
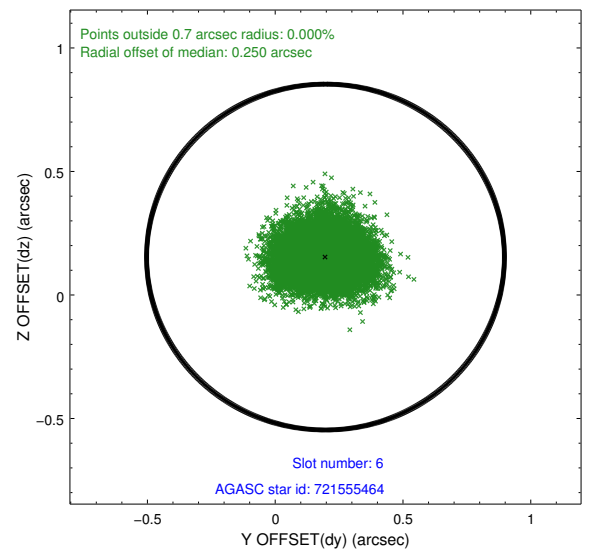
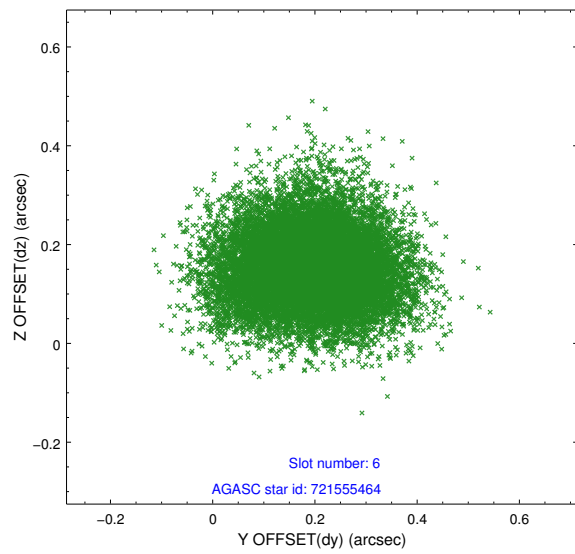
### 2.4.3 Slot 5



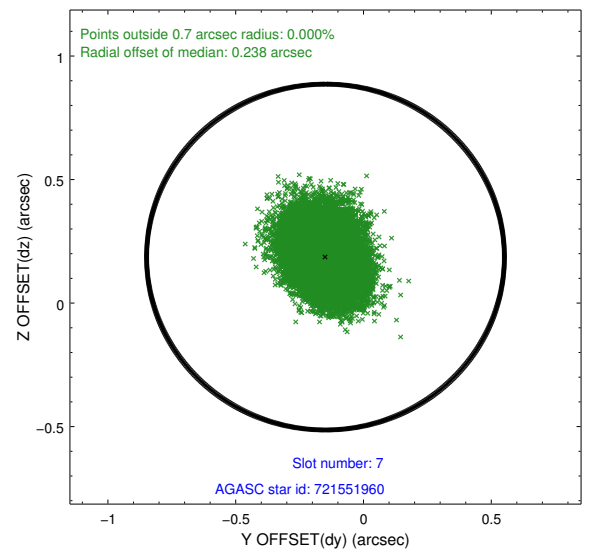
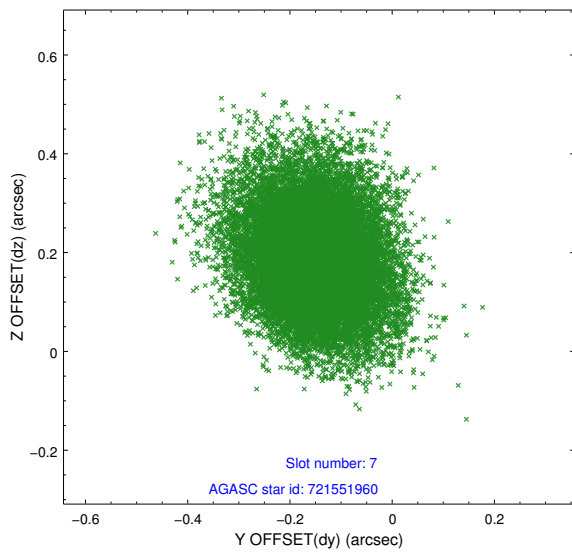
Time (s)



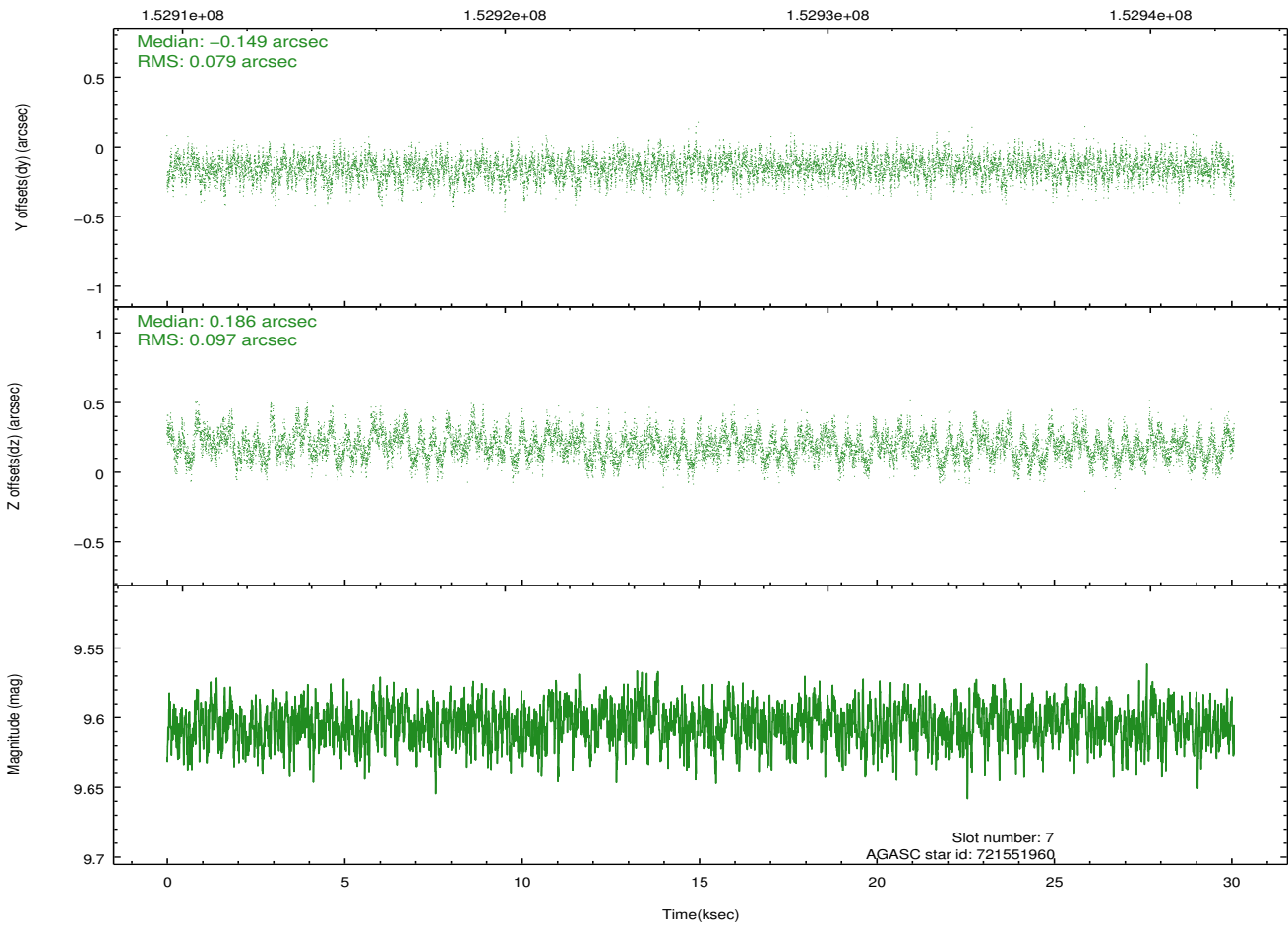
## 2.4.4 Slot 6



## 2.4.5 Slot 7

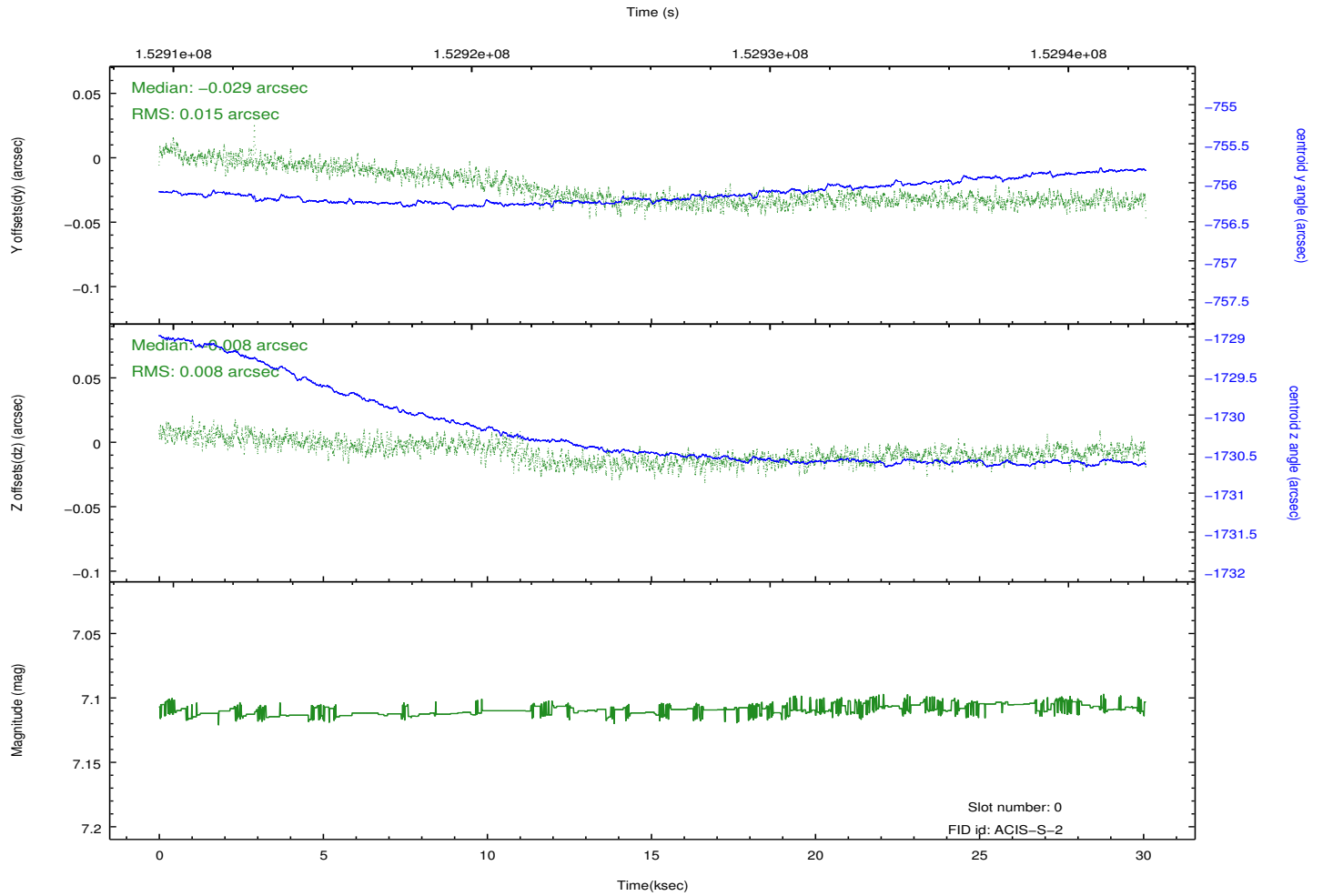
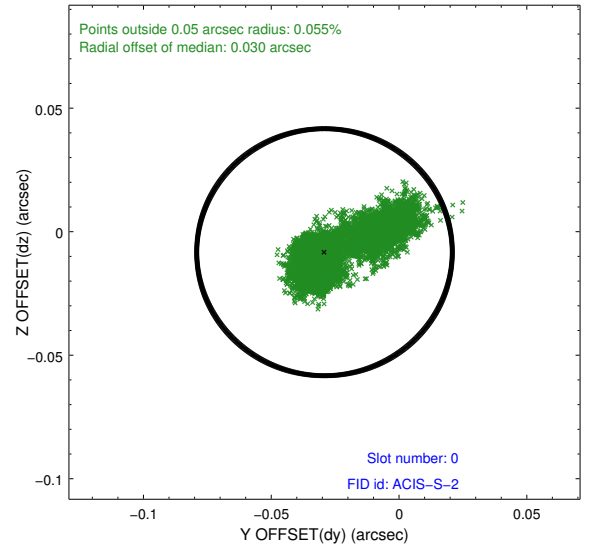
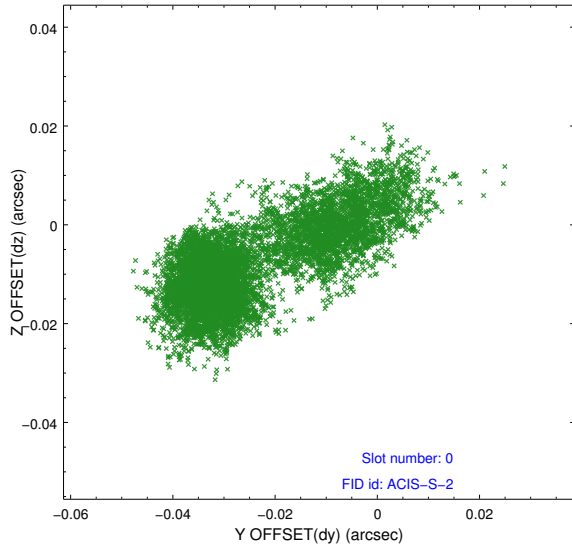


Time (s)

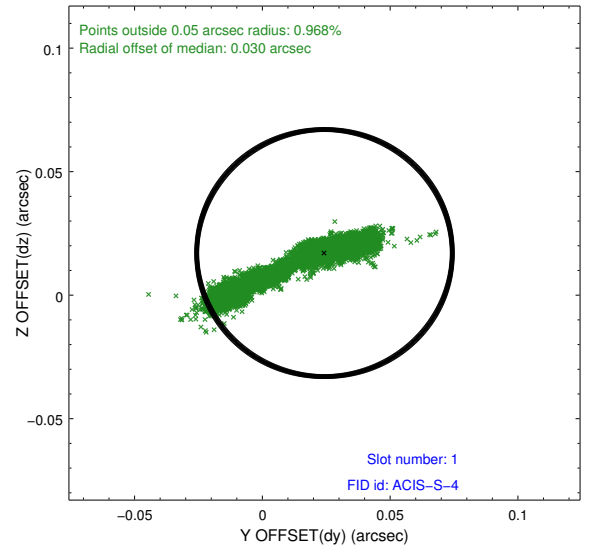
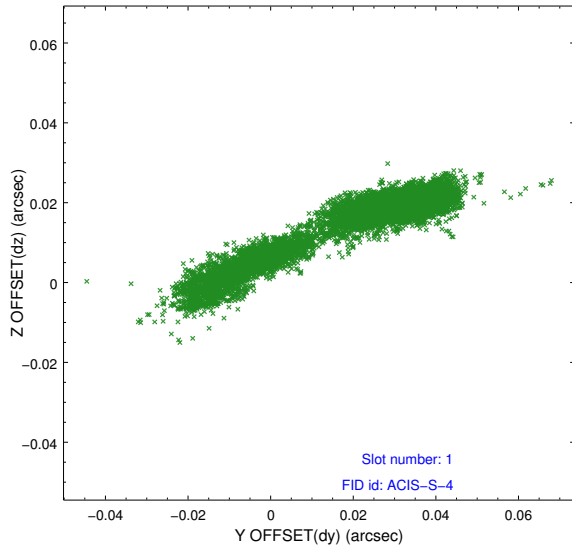


## 2.5 FID Slots

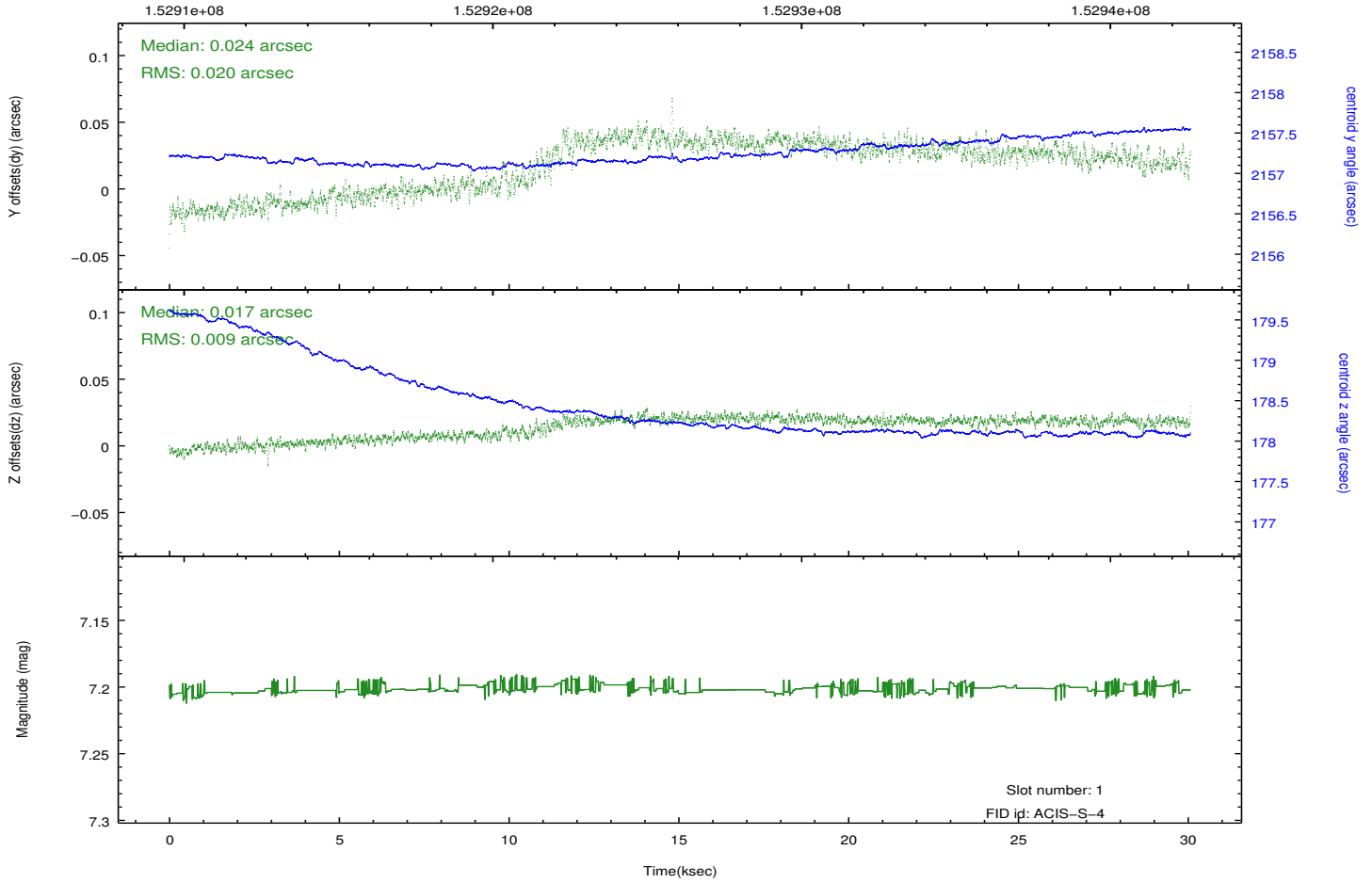
### 2.5.1 Slot 0



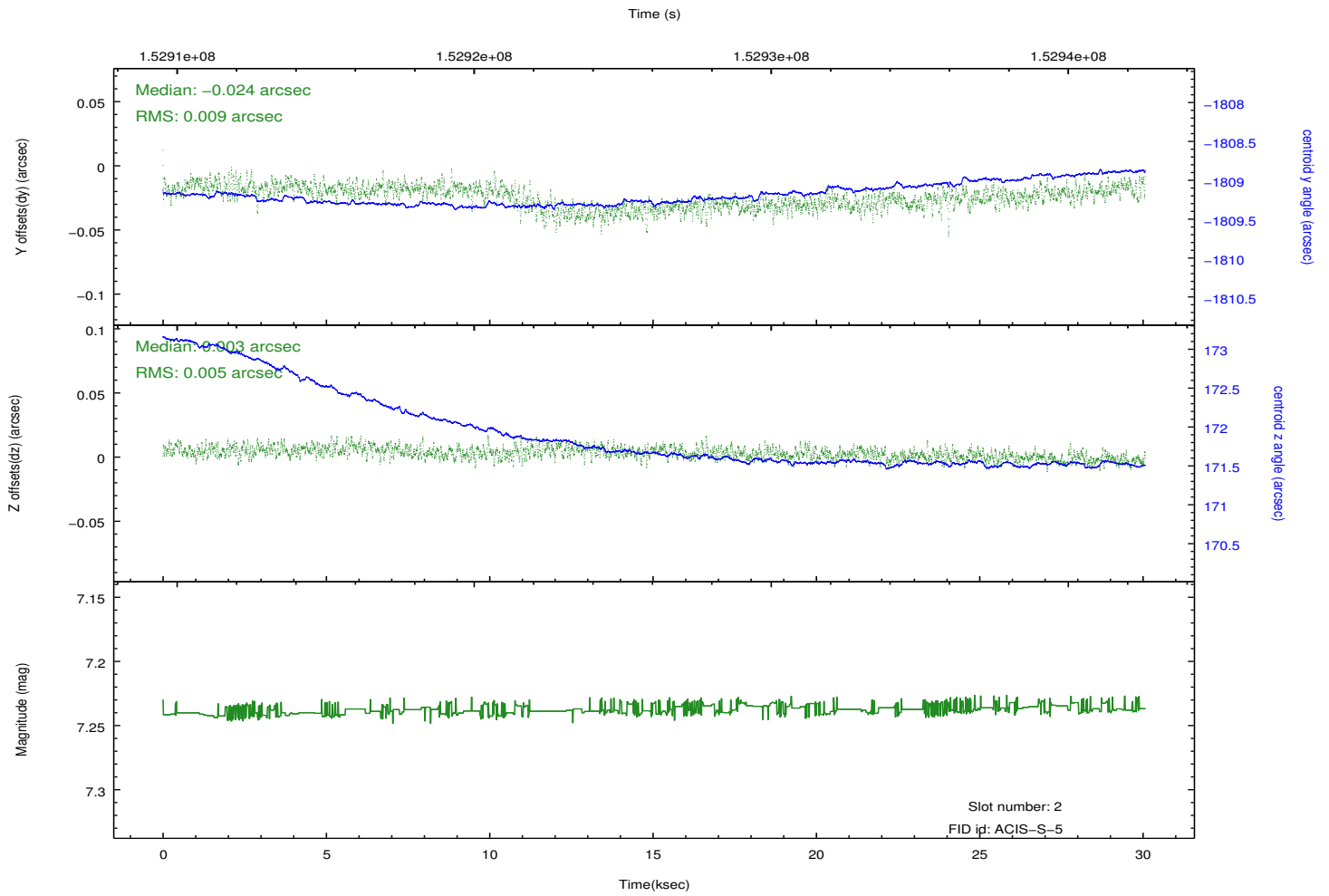
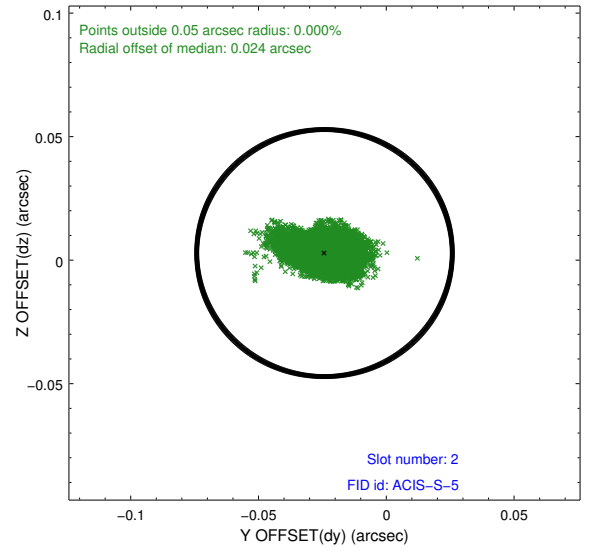
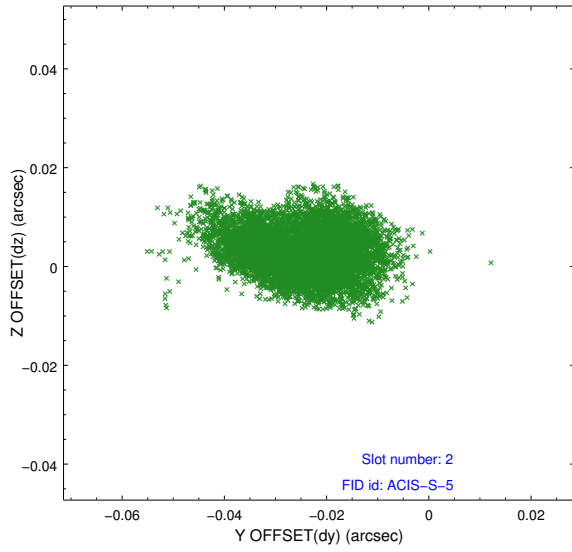
## 2.5.2 Slot 1



Time (s)



### 2.5.3 Slot 2



## **A Summary**

### **A.1 Status**

V&V Scientist	Jen Lauer
V&V Date (YYYY-MM-DD)	2012.10.26
V&V Edition	1
V&V Disposition and Status	OK
V&V Charge Time	29.908

### **A.2 Comments**