

V&V Reference Report

L2 ASCDS Version : 8.4.5

Observation 3273 - L2 Version 3
Chandra X-Ray Center

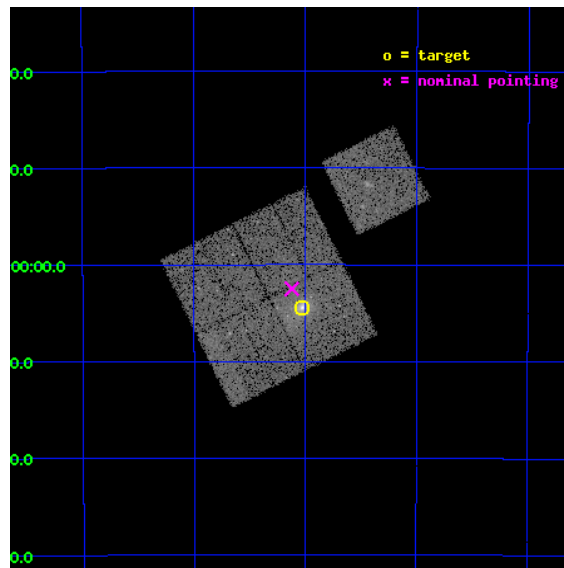
L2 Processing Date : Oct 17 2012

Contents

1	Front	2
2	OBI	3
2.1	OBI	3
2.1.1	Images	3
2.1.2	Bias	3
2.1.3	Parameters	4
2.1.4	Events	4
2.2	Compared Parameters	5
2.3	Aspect	6
2.4	Star Slots	9
2.4.1	Slot 3	9
2.4.2	Slot 4	10
2.4.3	Slot 5	11
2.4.4	Slot 6	12
2.4.5	Slot 7	13
2.5	FID Slots	14
2.5.1	Slot 0	14
2.5.2	Slot 1	15
2.5.3	Slot 2	16
A	Summary	17
A.1	Status	17
A.2	Comments	17

1 Front

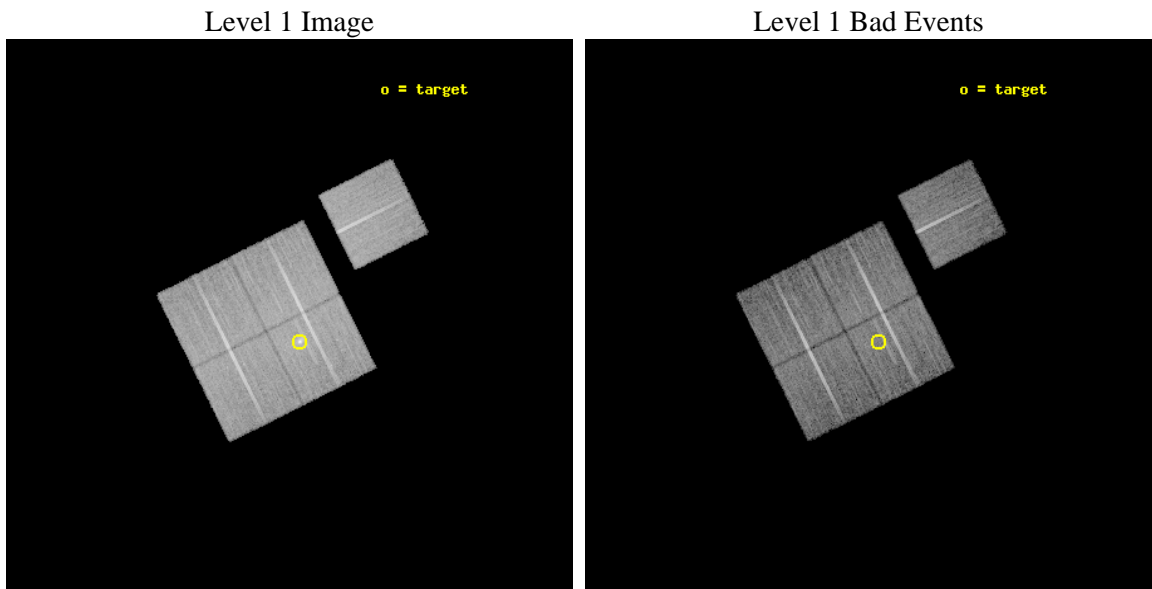
seq_num	800273	Sequence number
obs_id	3273	Observation id
title	MACS: THE X-RAY PROPERTIES OF THE MOST MASSIVE GALAXY CLUSTERS AT Z>0.3	Proposal title
observer	Dr. Harald Ebeling	Principal investigator
object	MACSJ0547.0-3904	Source name
dtcycle	0	
cycle	P	events from which exps? Prim/Second/Both
ra_targ	86.75625	Observer's specified target RA [deg]
dec_targ	-39.074444	Observer's specified target Dec [deg]
ra_nom	86.78009652725	Nominal RA [deg]
dec_nom	-39.041645340986	Nominal Dec [deg]
roll_nom	63.526863108158	Nominal Roll [deg]
revision	3	Processing version of data
ontime	22031.658997387	Sum of GTIs [s]
livetime	21743.799153114	Livetime [s]
ontime0	22034.799957603	Sum of GTIs [s]
ontime1	22034.799957603	Sum of GTIs [s]
ontime2	22028.517977297	Sum of GTIs [s]
ontime3	22031.658997387	Sum of GTIs [s]
ontime6	22031.658987373	Sum of GTIs [s]
l2events	54897	Number of level 2 events



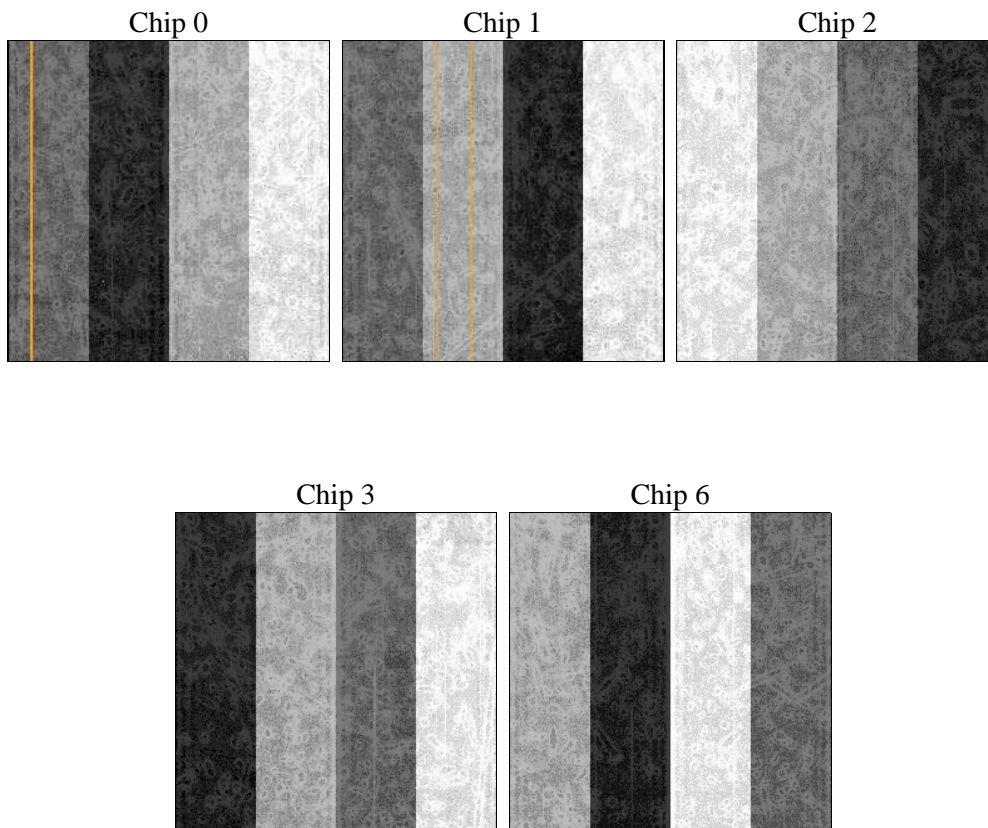
2 OBI

2.1 OBI

2.1.1 Images



2.1.2 Bias



2.1.3 Parameters

obi_num	0	Obi number	sched_exp_time	22000.000000	[s] Scheduled observation exposure time
ascdsver	8.4.5	Processing system revision	ontime	22031.658997387	Sum of GTIs [s]
caldsver	4.5.2	 	ontime0	22034.799957603	Sum of GTIs [s]
date	2012-10-16T23:47:01	Date and time of file creation	ontime1	22034.799957603	Sum of GTIs [s]
revision	3	Processing version of data	ontime2	22028.517977297	Sum of GTIs [s]
			ontime3	22031.658997387	Sum of GTIs [s]
			ontime6	22031.658987373	Sum of GTIs [s]
			l1events	599216	Number of level 1 events

2.1.4 Events

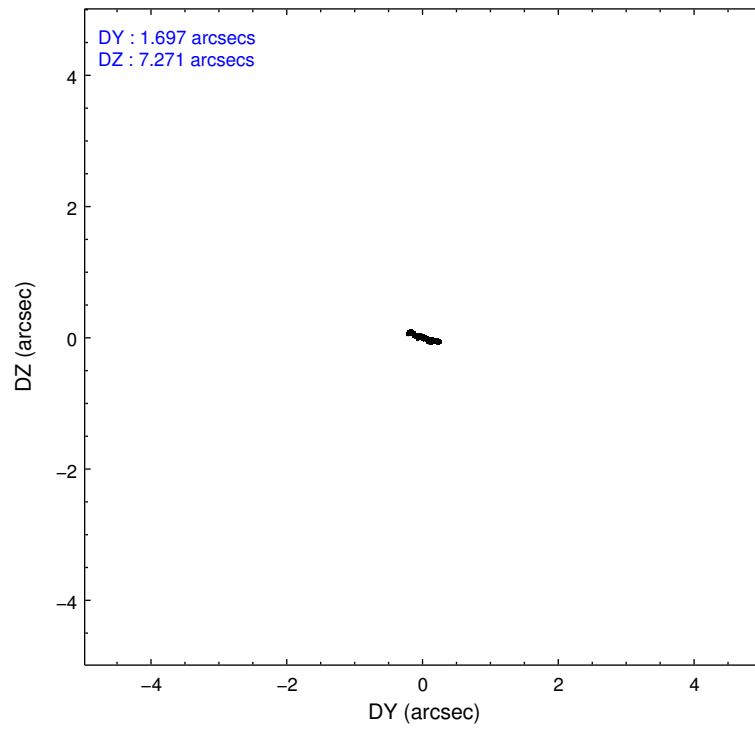
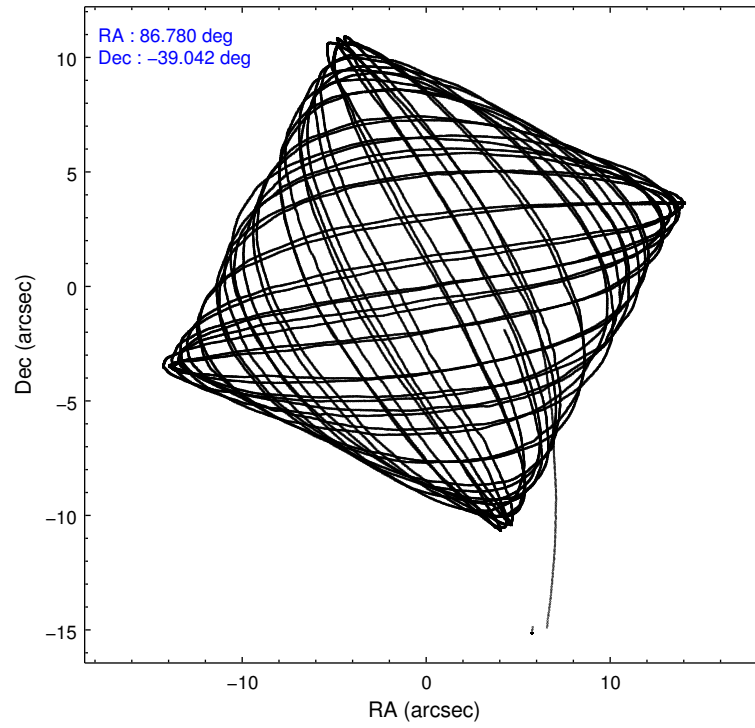
	ccd 0	ccd 1	ccd 2	ccd 3	ccd 6
level 1 events	113355	112838	125391	128238	119394
rejected events	101558	99849	113846	111374	107241
rejected %	89%	88%	90%	86%	89%

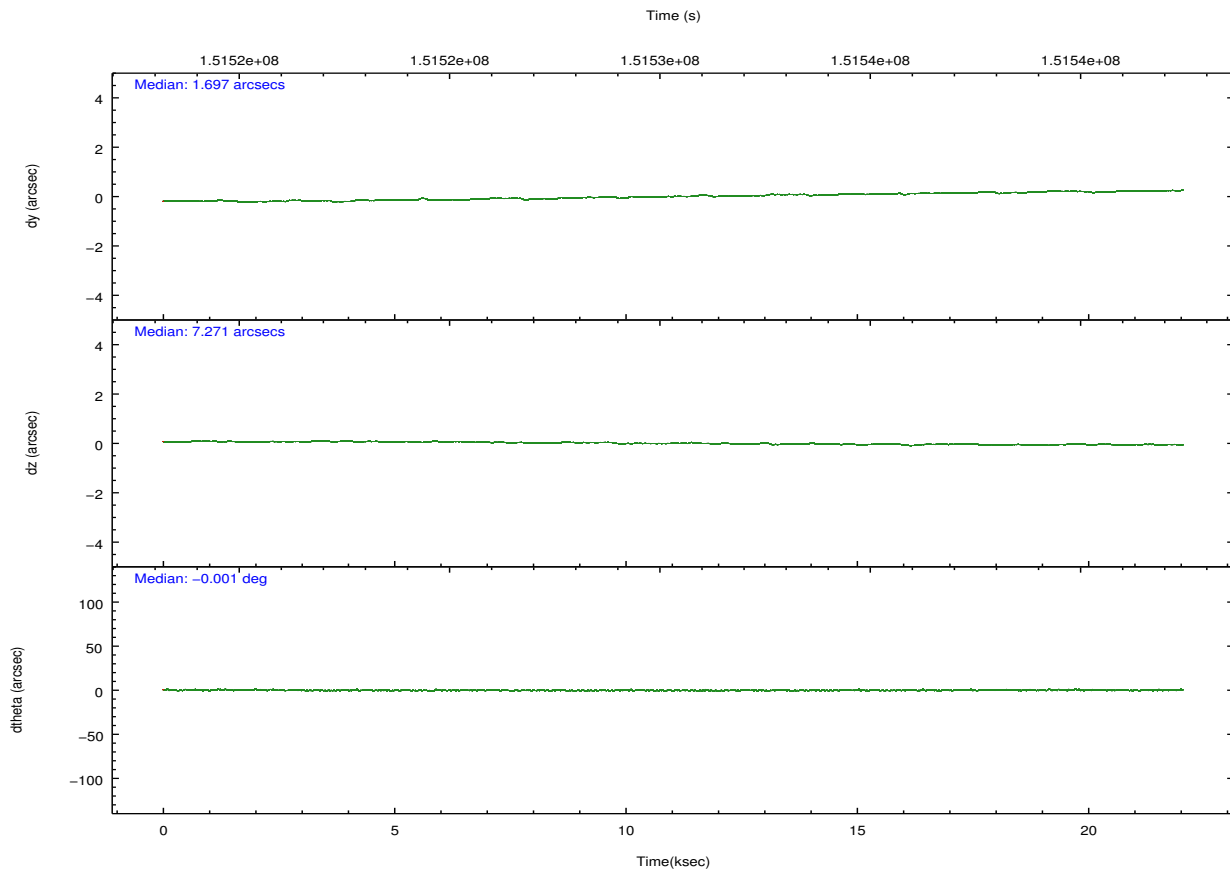
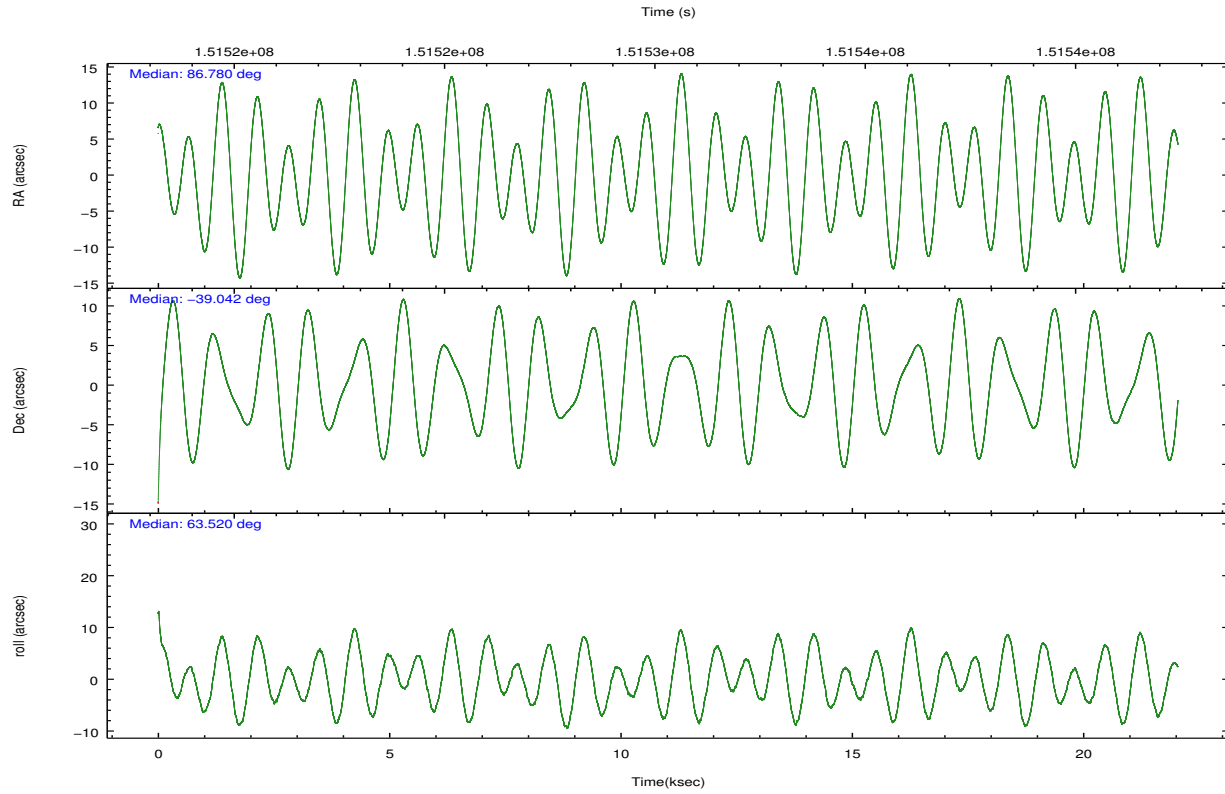
	ccd 0	ccd 1	ccd 2	ccd 3	ccd 6
grade 0 events	7178	7682	6874	11784	6557
	6%	6%	5%	9%	5%
grade 1 events	77	73	92	100	60
	0%	0%	0%	0%	0%
grade 2 events	3541	3619	3374	3581	3210
	3%	3%	2%	2%	2%
grade 3 events	1710	1774	1627	1716	1575
	1%	1%	1%	1%	1%
grade 4 events	1663	1833	1620	1717	1576
	1%	1%	1%	1%	1%
grade 5 events	3954	4185	3759	4418	4449
	3%	3%	2%	3%	3%
grade 6 events	2860	3197	2691	2745	3145
	2%	2%	2%	2%	2%
grade 7 events	92372	90475	105354	102177	98822
	81%	80%	84%	79%	82%

2.2 Compared Parameters

Parameter	Planned	Actual	Parameter	Planned	Actual
Instrument	ACIS	ACIS	Obspar format version number	7	7
Detector	ACIS-01236	ACIS-01236	Obspar file type	PREDICTED	ACTUAL
Grating	NONE	NONE	Obspar update status	NONE	UPDATED
Data mode	VFAINT	VFAINT	Number of optional ACIS chips dropped	0	0
Observation mode	POINTING	POINTING	On-chip summing requested	N	N
[deg] Pointing RA	86.782382	86.78009652724967	Subarray requested	NONE	NONE
[deg] Pointing Dec	-39.068965	-39.04164534098564	Alternating exposures requested	N	N
[deg] Pointing Roll	63.319612	63.52686310815824	[s] Primary exposure time	0.000000	3.1
[mm] SIM focus pos	-0.782348	-0.7809083437167272			
[mm] SIM defocus	0	0.001439871863259334			
[mm] SIM translation stage pos	-227.742463	-227.734108438797			
[mm] SIM translation stage offset	-5.85	-5.858344564132665			
[s] Observation start time (MET)	151519334.184000	151518180.79449			
Observation start date	2002-10-20T16:41:10	2002-10-20T16:23:00			
[s] Observation end time (MET)	151541334.184000	151542413.333			
Observation end date	2002-10-20T22:47:50	2002-10-20T23:06:53			
Read mode	TIMED	TIMED			

2.3 Aspect



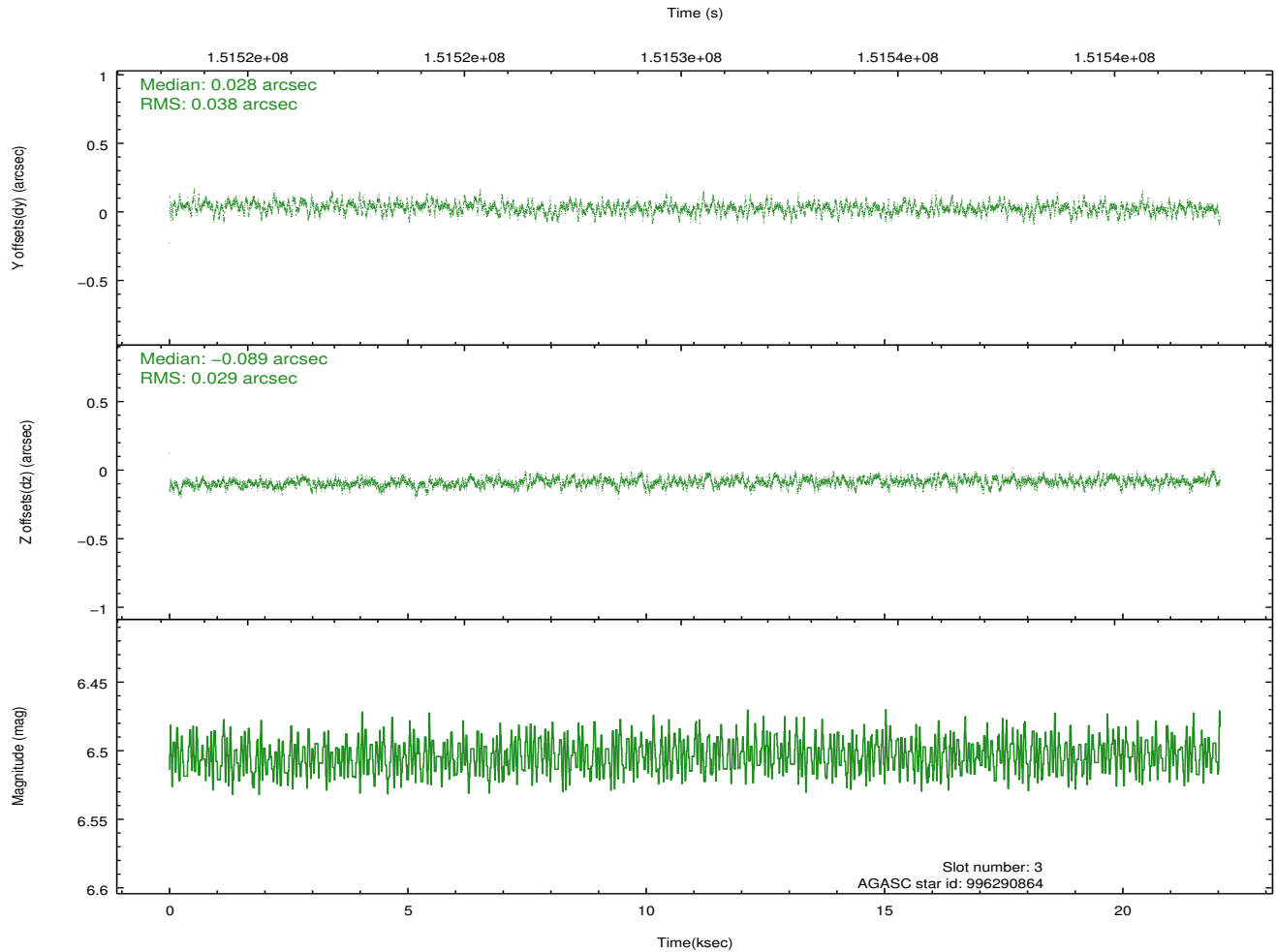
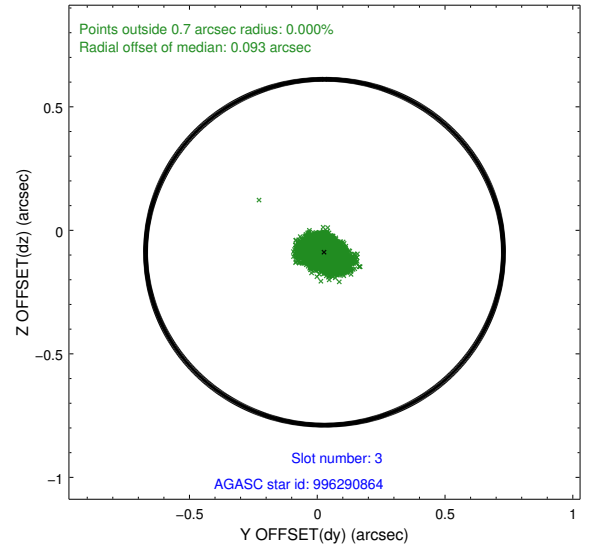
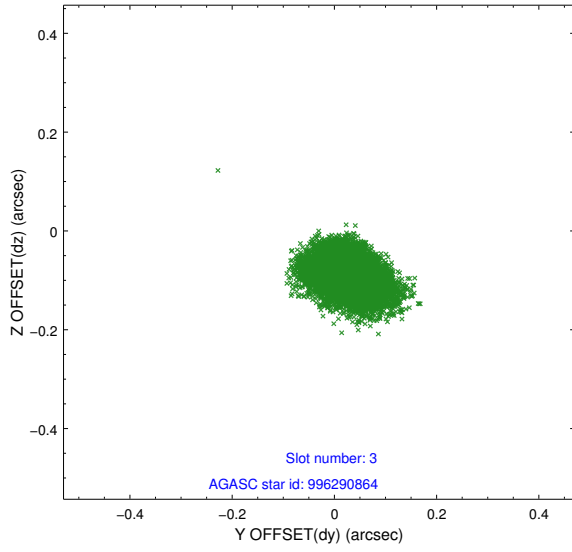


Slot Statistics

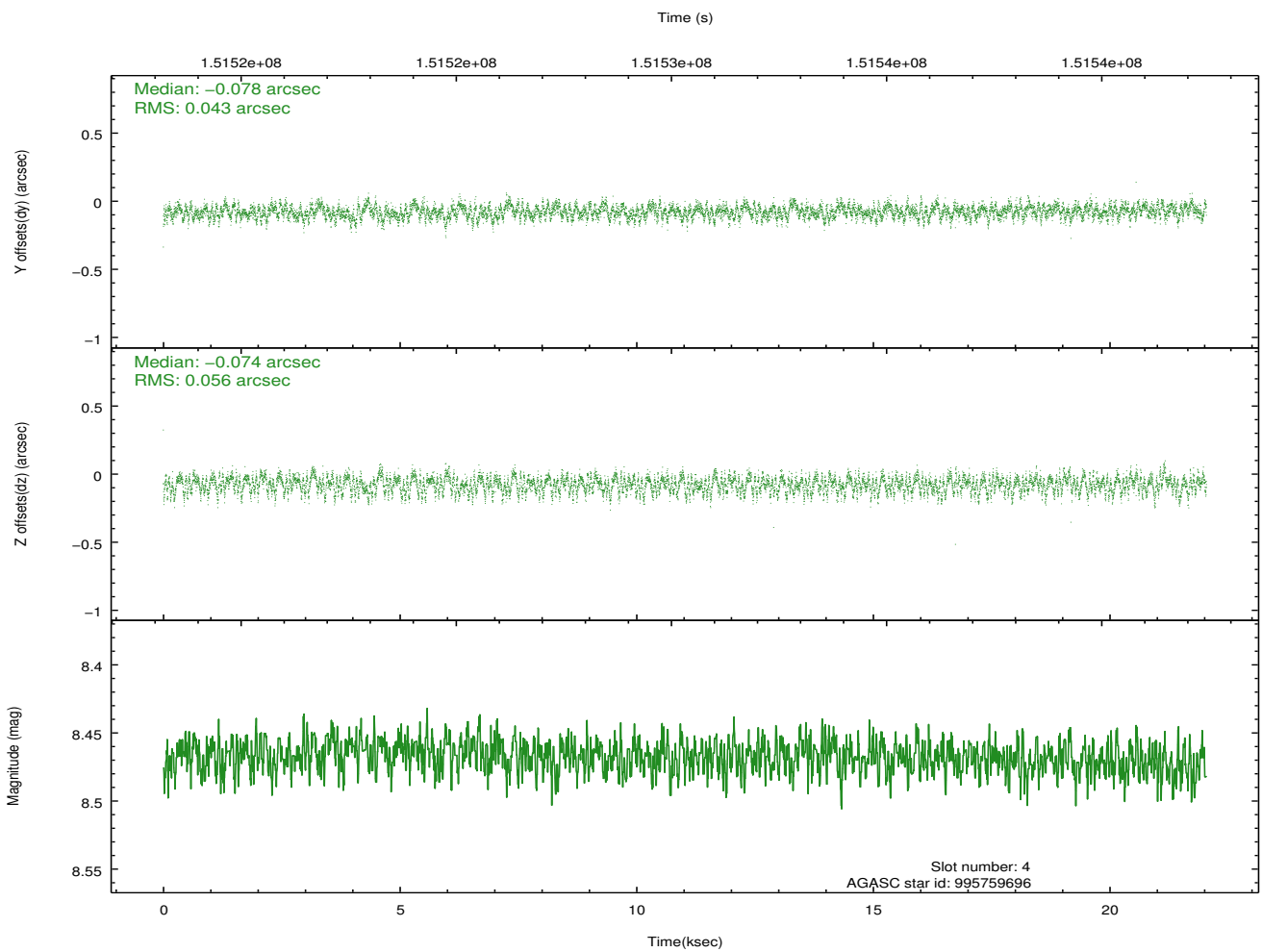
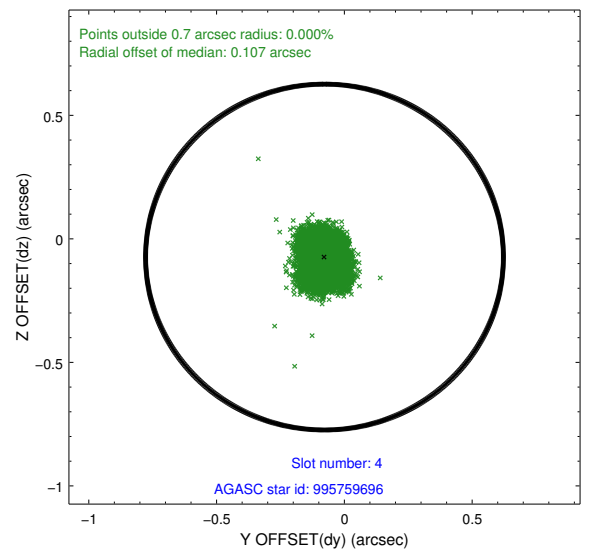
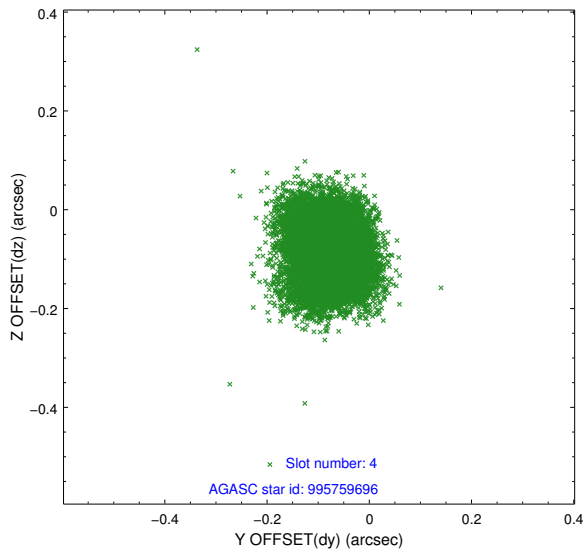
slot	status	id	mag	n_pts	med_dy	med_dz	dr1	dr2	ra	dec	mean_y	mean_z
0	FID	ACIS-I-1	7.24	5377	0.044	0.009	0.009	0.015	0.000000	0.000000	938.05	-950.92
1	FID	ACIS-I-5	7.23	5377	-0.138	0.075	0.007	0.012	0.000000	0.000000	-1810.13	946.57
2	FID	ACIS-I-6	7.25	5377	0.003	-0.013	0.008	0.013	0.000000	0.000000	403.42	1591.14
3	GUIDE	996290864	6.50	10753	0.028	-0.089	0.050	0.084	85.875770	-39.406909	-2230.94	1701.02
4	GUIDE	995759696	8.47	10750	-0.078	-0.074	0.075	0.121	86.325358	-38.689263	641.30	1760.07
5	GUIDE	995762848	8.47	10752	0.110	0.005	0.058	0.093	87.165773	-39.278163	-195.02	-1293.56
6	GUIDE	996281240	8.84	10746	-0.132	0.055	0.076	0.121	87.153377	-39.932007	-2318.02	-2311.46
7	GUIDE	996280200	9.63	10751	0.069	0.105	0.086	0.141	87.202848	-39.423858	-619.07	-1619.75

2.4 Star Slots

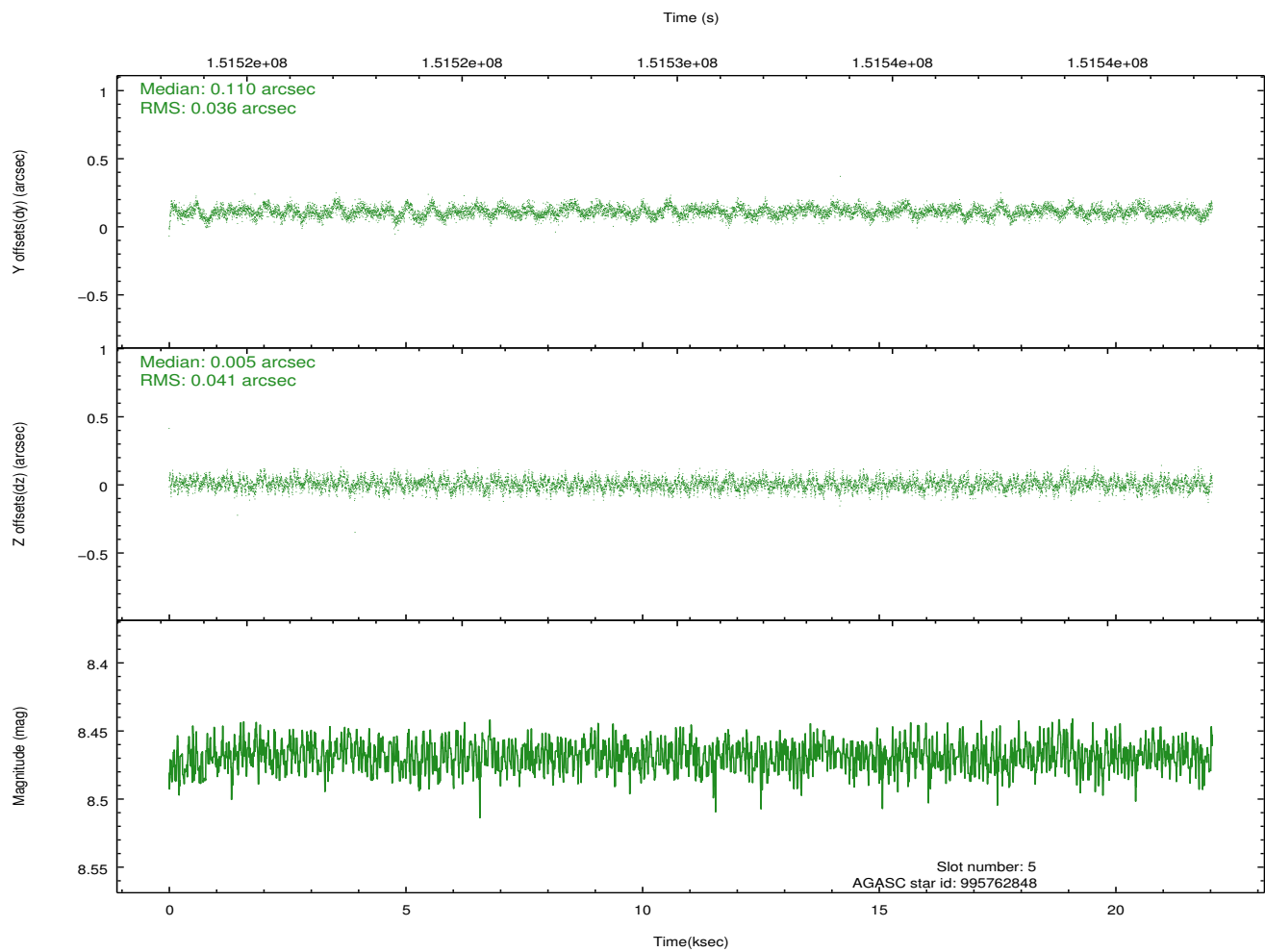
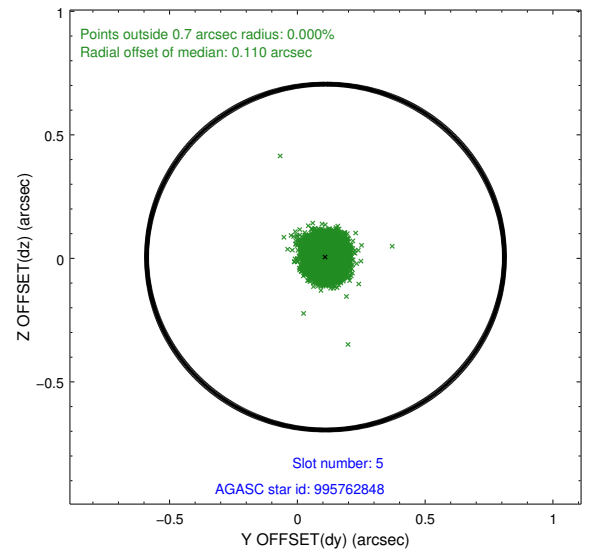
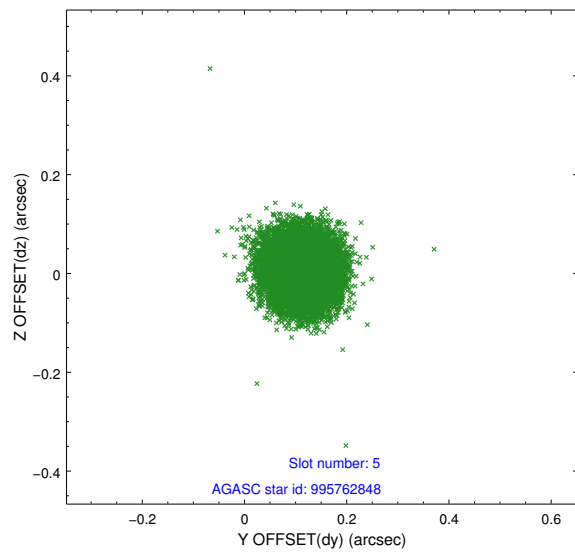
2.4.1 Slot 3



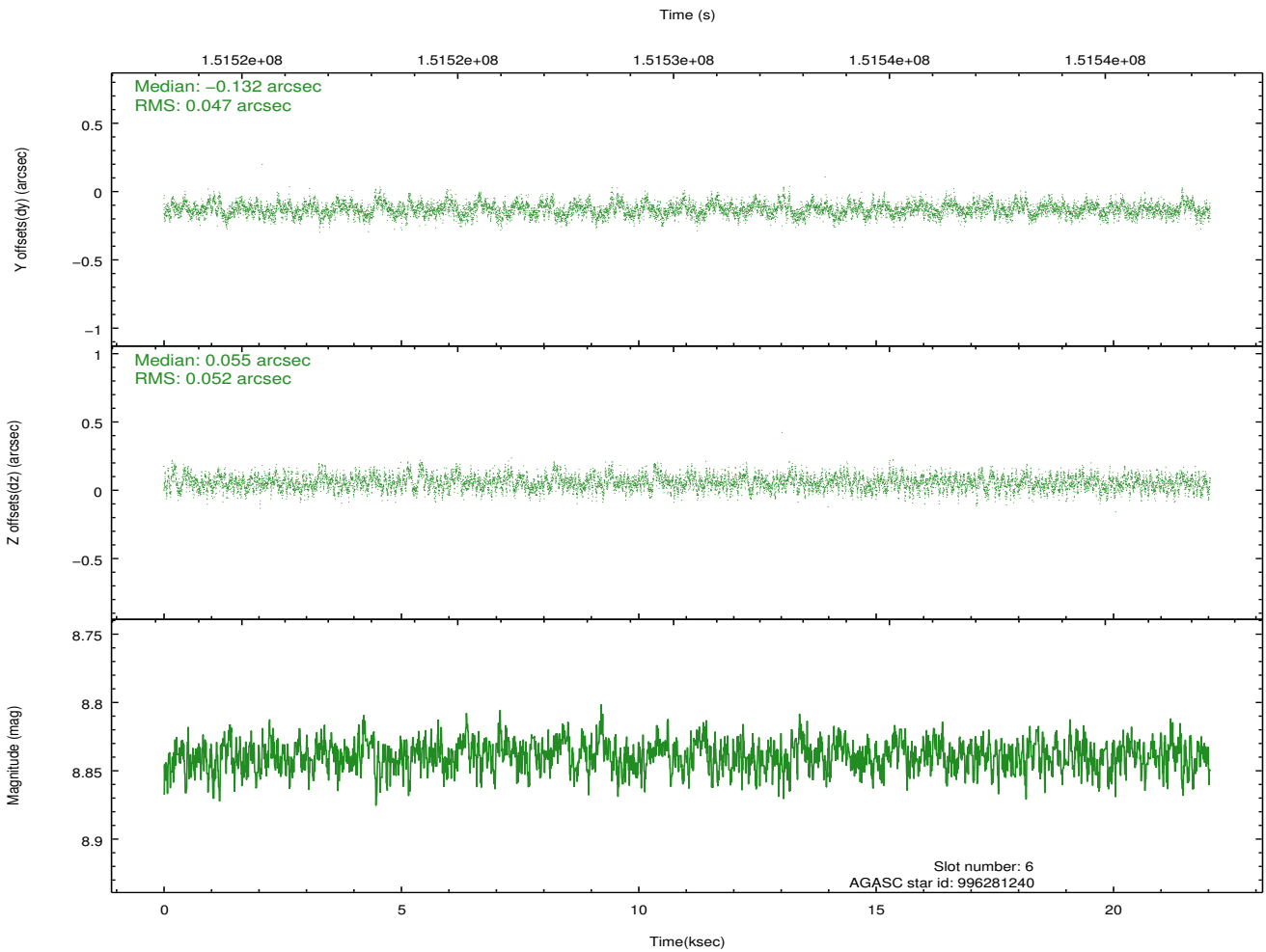
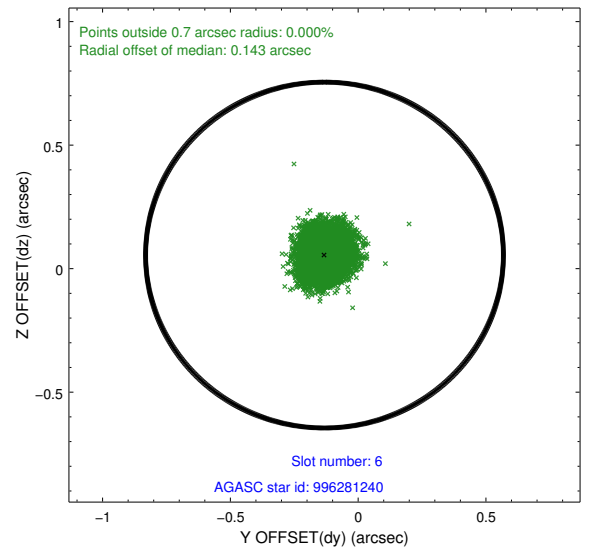
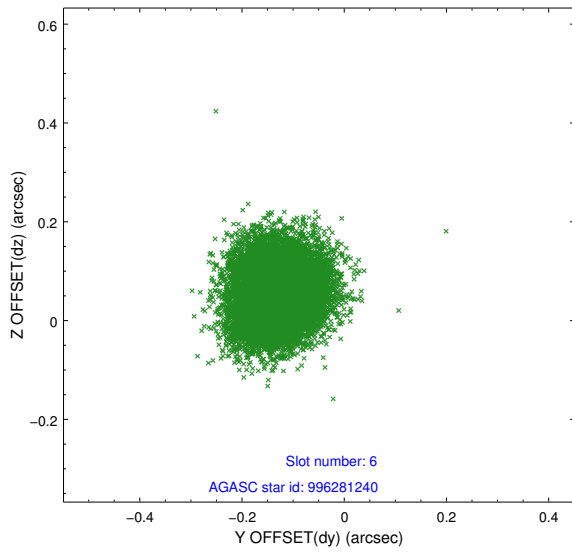
2.4.2 Slot 4



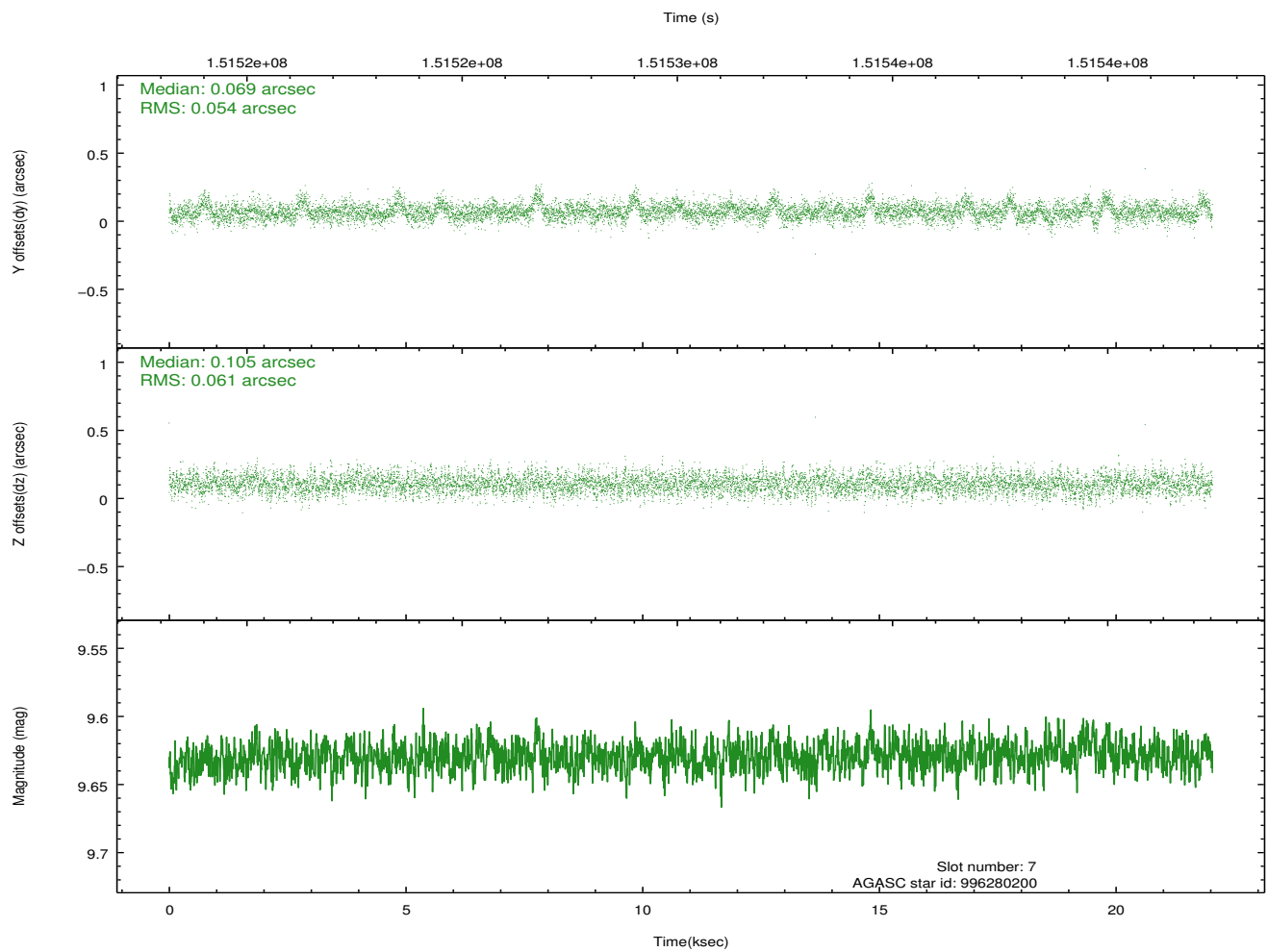
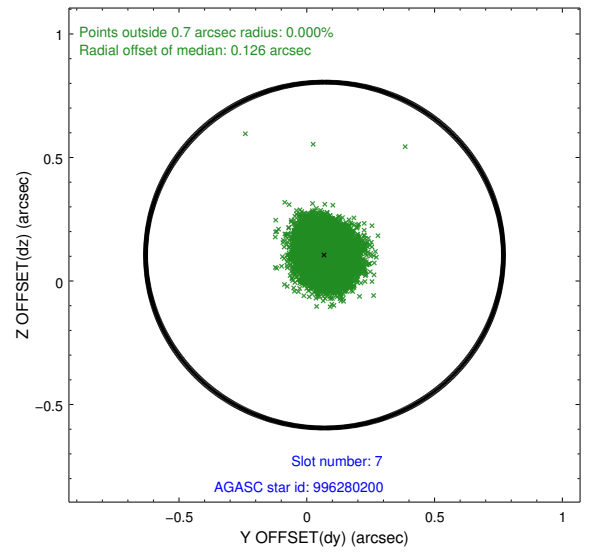
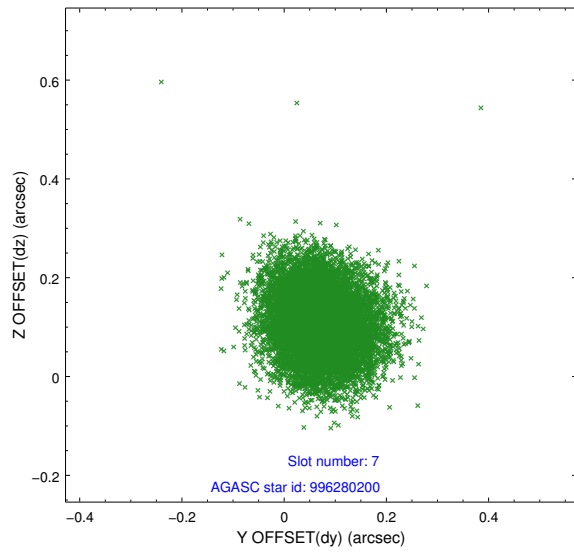
2.4.3 Slot 5



2.4.4 Slot 6

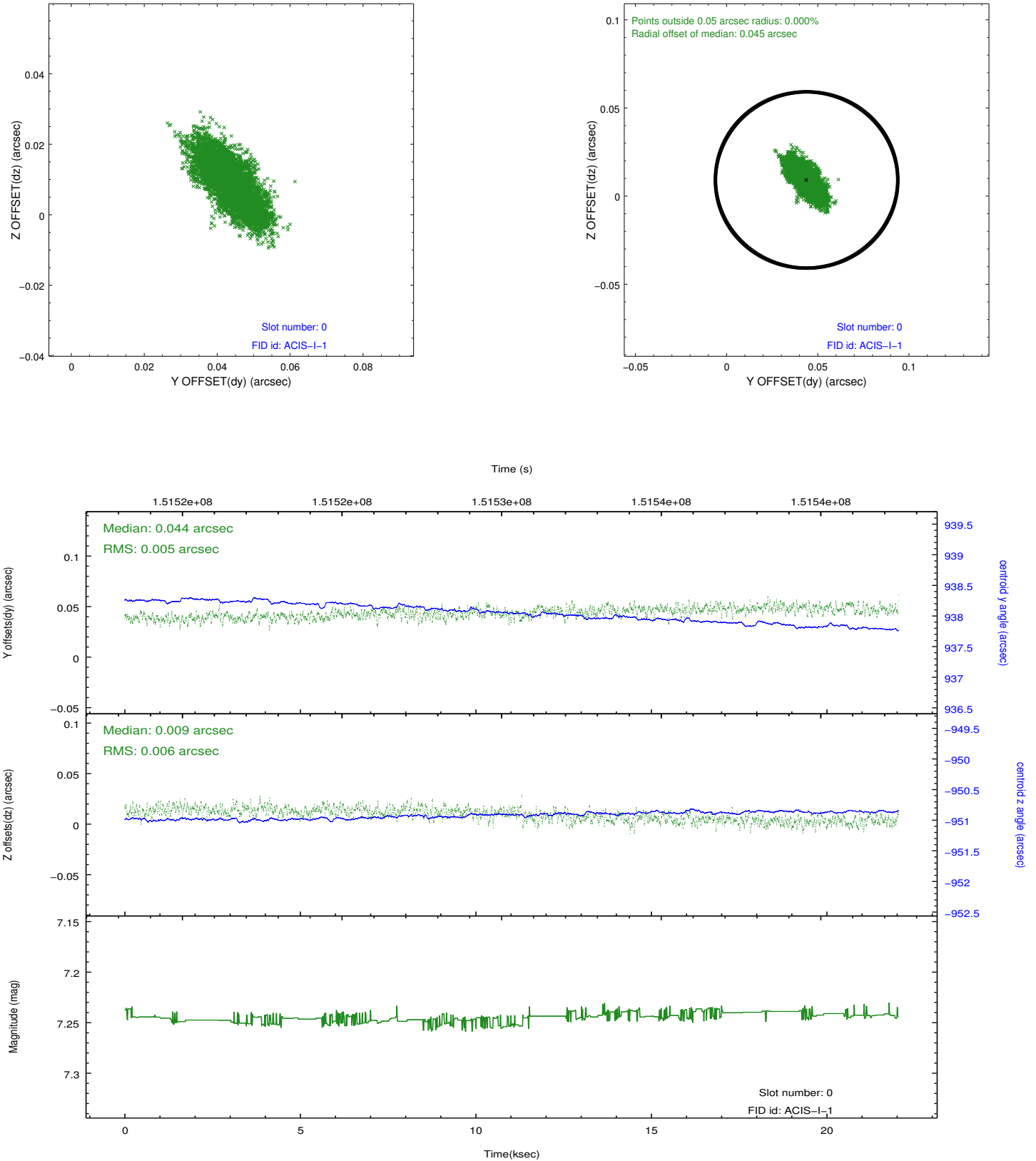


2.4.5 Slot 7

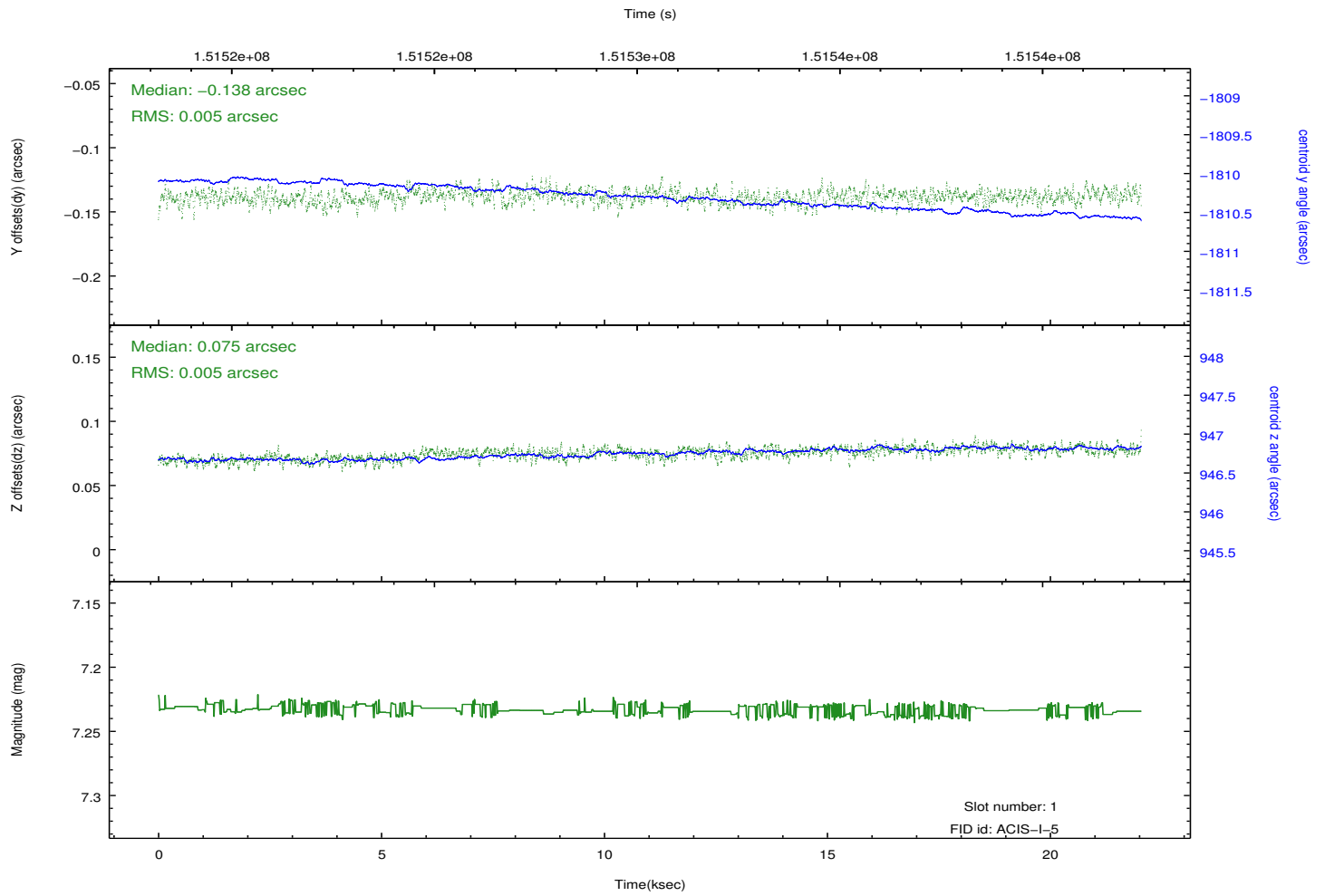
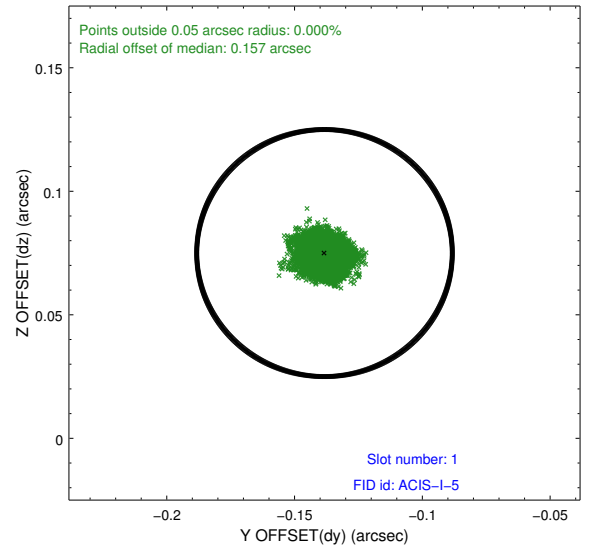
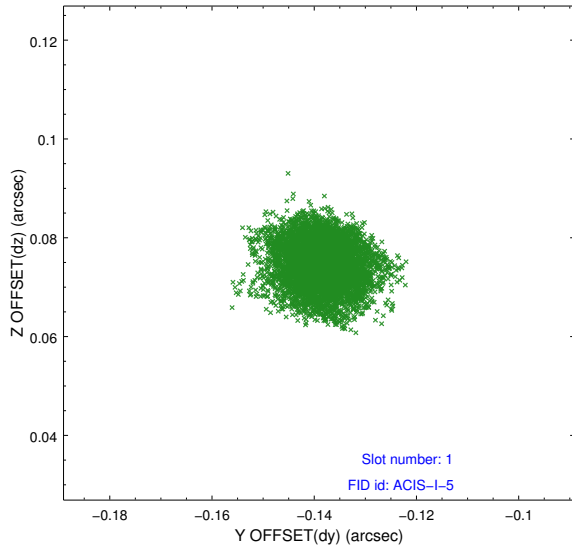


2.5 FID Slots

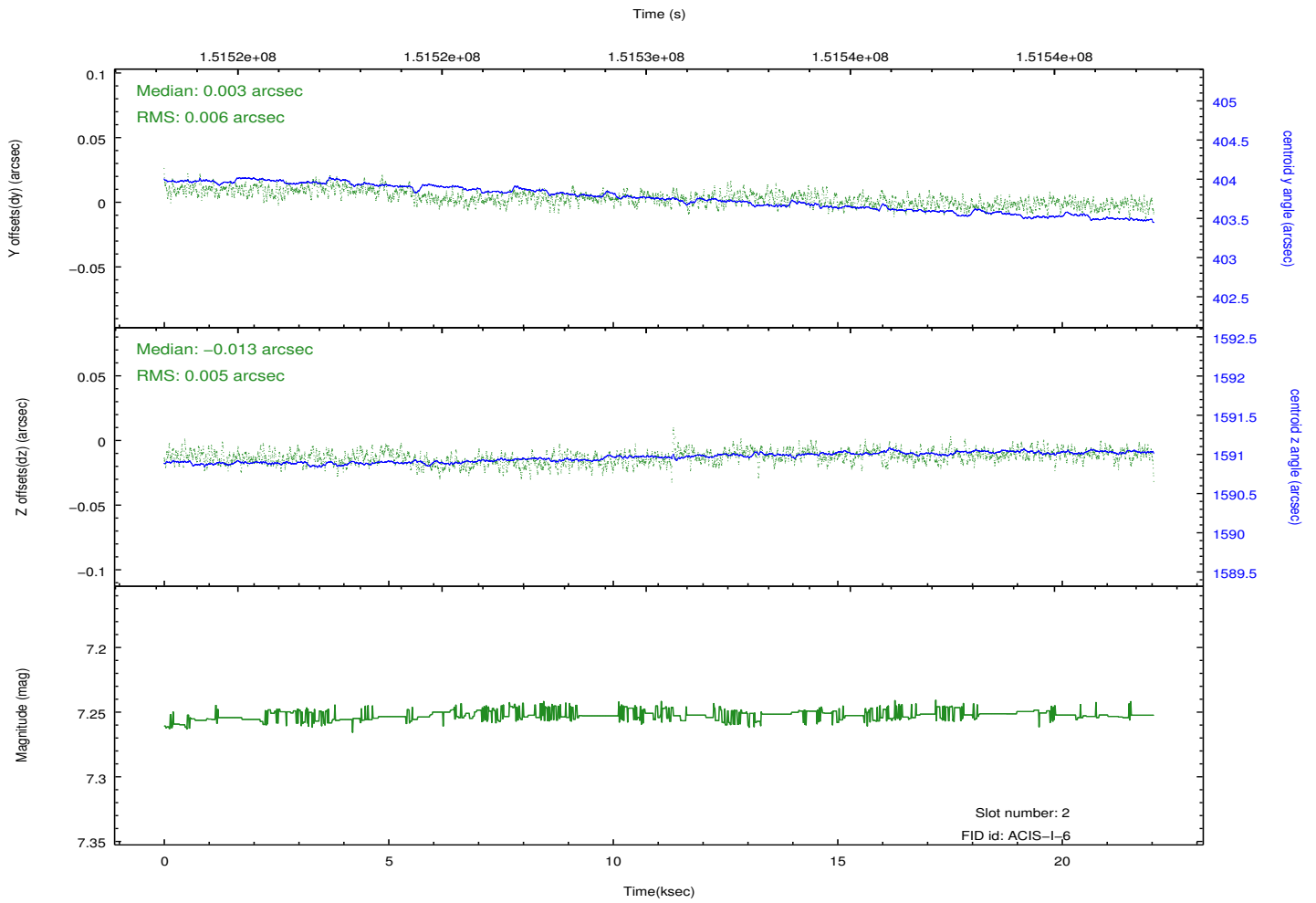
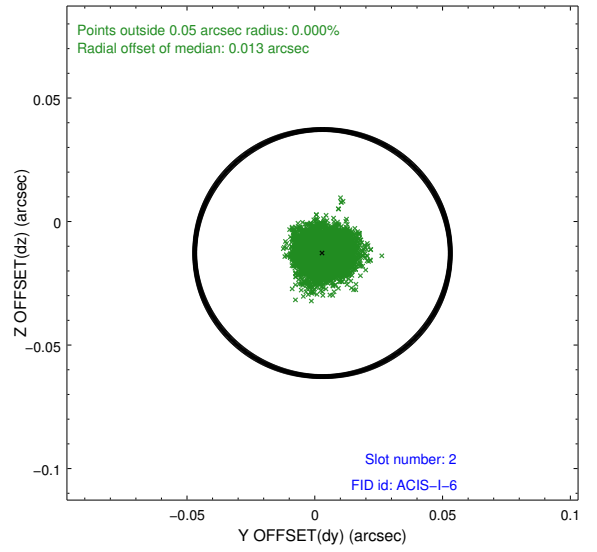
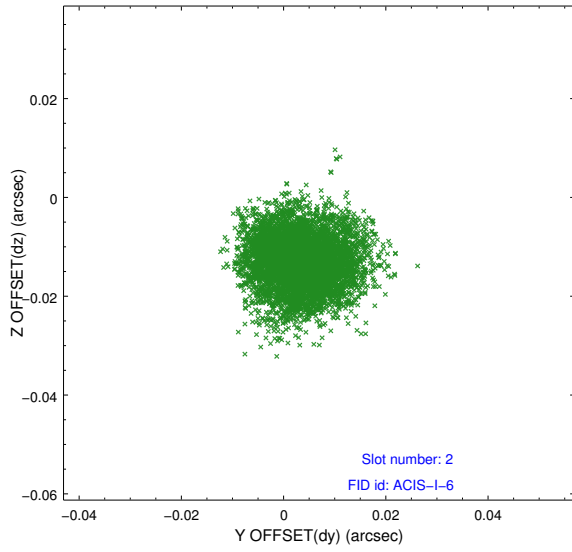
2.5.1 Slot 0



2.5.2 Slot 1



2.5.3 Slot 2



A Summary

A.1 Status

V&V Scientist	Jen Lauer
V&V Date (YYYY-MM-DD)	2012.10.25
V&V Edition	1
V&V Disposition and Status	OK
V&V Charge Time	22.031

A.2 Comments