

V&V Reference Report

L2 ASCDS Version : 8.4.5

Observation 3473 - L2 Version 3
Chandra X-Ray Center

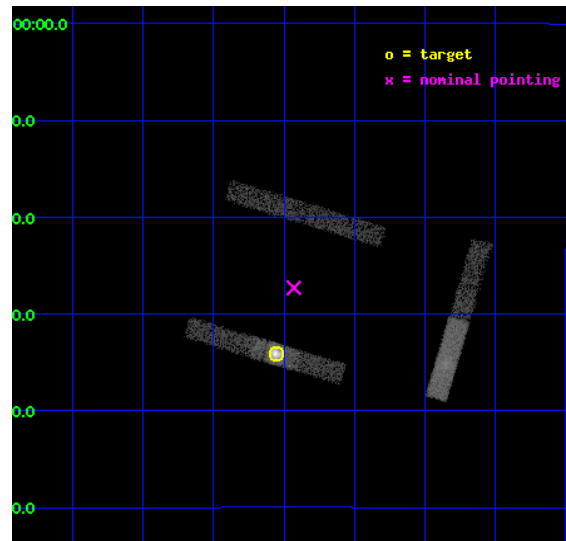
L2 Processing Date : Oct 7 2012

Contents

1	Front	2
2	OBI	3
2.1	OBI	3
2.1.1	Images	3
2.1.2	Bias	3
2.1.3	Parameters	4
2.1.4	Events	4
2.2	Compared Parameters	5
2.3	Aspect	6
2.4	Star Slots	9
2.4.1	Slot 3	9
2.4.2	Slot 4	10
2.4.3	Slot 5	11
2.4.4	Slot 6	12
2.4.5	Slot 7	13
2.5	FID Slots	14
2.5.1	Slot 0	14
2.5.2	Slot 1	15
2.5.3	Slot 2	16
A	Summary	17
A.1	Status	17
A.2	Comments	17

1 Front

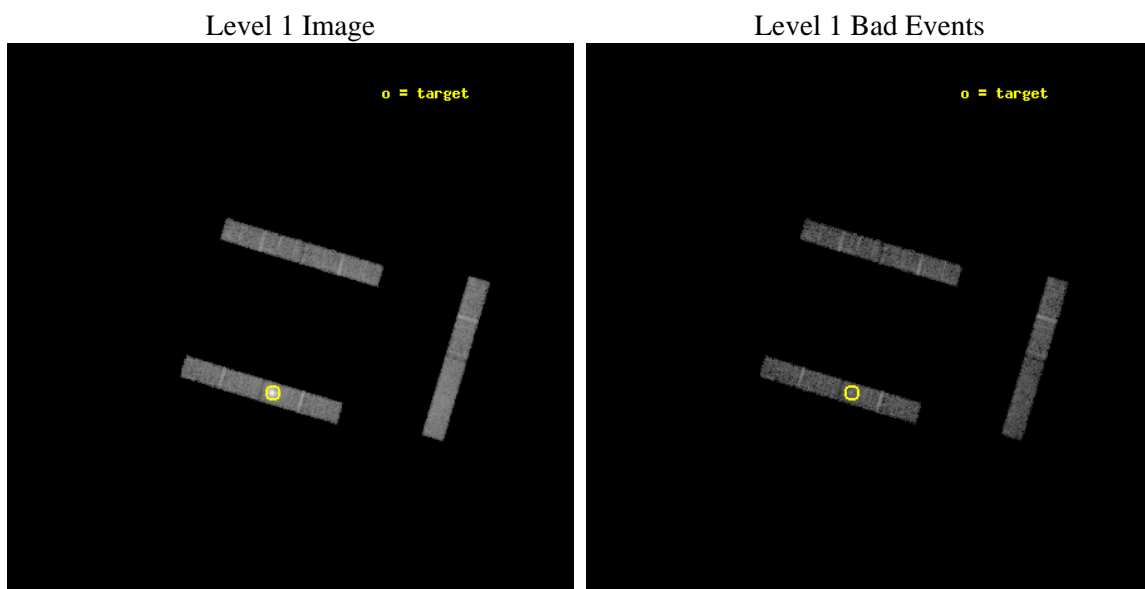
seq_num	590272	Sequence number
obs_id	3473	Observation id
title	AO3A CALIBRATION OBSERVATIONS THE STANDARD CANDLES CAS A AND G21.5-09	Proposal title
observer	Dr. CXC Calibration	Principal investigator
object	G21.5-0.9 [Chip I3, T=120, Offsets=-2,2,0]	Source name
dtcycle	0	
cycle	P	events from which exps? Prim/Second/Both
ra_targ	278.389583	Observer's specified target RA [deg]
dec_targ	-10.568528	Observer's specified target Dec [deg]
ra_nom	278.35743756209	Nominal RA [deg]
dec_nom	-10.45515345551	Nominal Dec [deg]
roll_nom	106.67246038802	Nominal Roll [deg]
revision	3	Processing version of data
ontime	9671.1999475658	Sum of GTIs [s]
livetime	9323.3540825233	Livetime [s]
ontime0	9670.058927536	Sum of GTIs [s]
ontime1	9671.1999475658	Sum of GTIs [s]
ontime2	9671.1999475658	Sum of GTIs [s]
ontime3	9671.1999475658	Sum of GTIs [s]
ontime6	9670.058927536	Sum of GTIs [s]
ontime7	9670.058927536	Sum of GTIs [s]
l2events	42738	Number of level 2 events



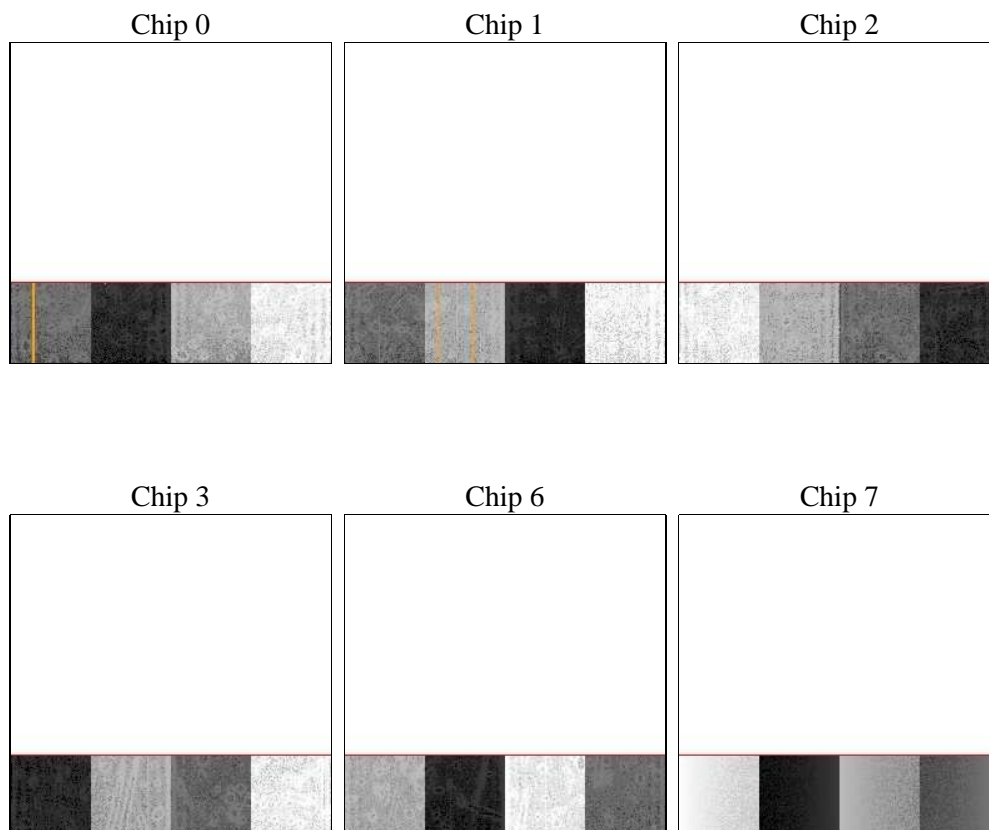
2 OBI

2.1 OBI

2.1.1 Images



2.1.2 Bias



2.1.3 Parameters

obi_num	1	Obi number	sched_exp_time	9500.000000	[s] Scheduled observation exposure time
ascdsver	8.4.5	Processing system revision	ontime	9671.1999475658	Sum of GTIs [s]
caldsver	4.5.2	 	ontime0	9670.058927536	Sum of GTIs [s]
date	2012-10-07T11:28:06	Date and time of file creation	ontime1	9671.1999475658	Sum of GTIs [s]
revision	3	Processing version of data	ontime2	9671.1999475658	Sum of GTIs [s]
			ontime3	9671.1999475658	Sum of GTIs [s]
			ontime6	9670.058927536	Sum of GTIs [s]
			ontime7	9670.058927536	Sum of GTIs [s]
			l1events	139261	Number of level 1 events

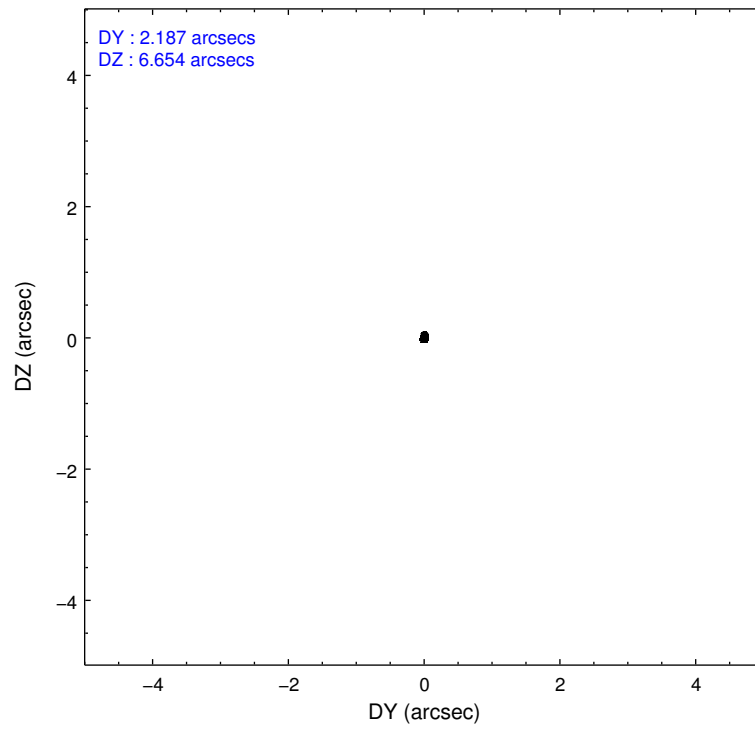
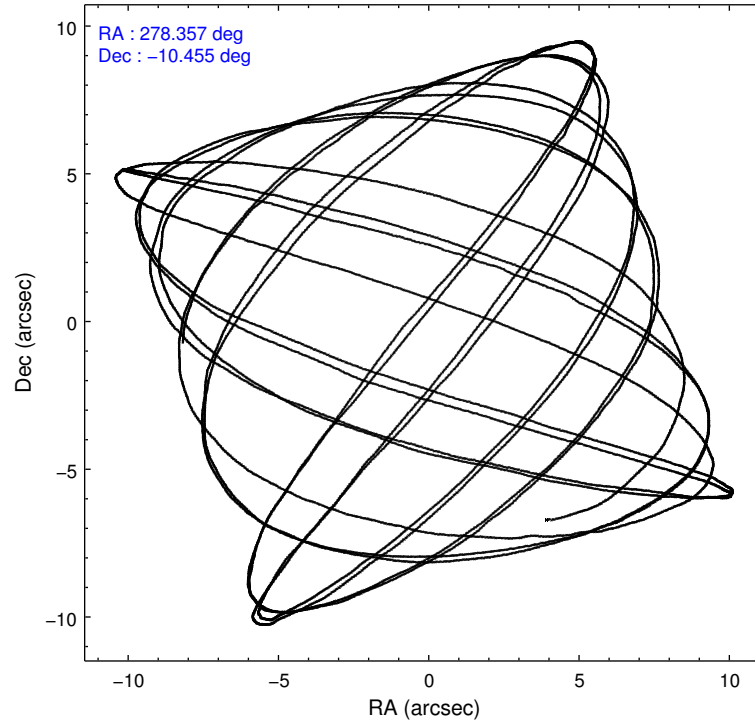
2.1.4 Events

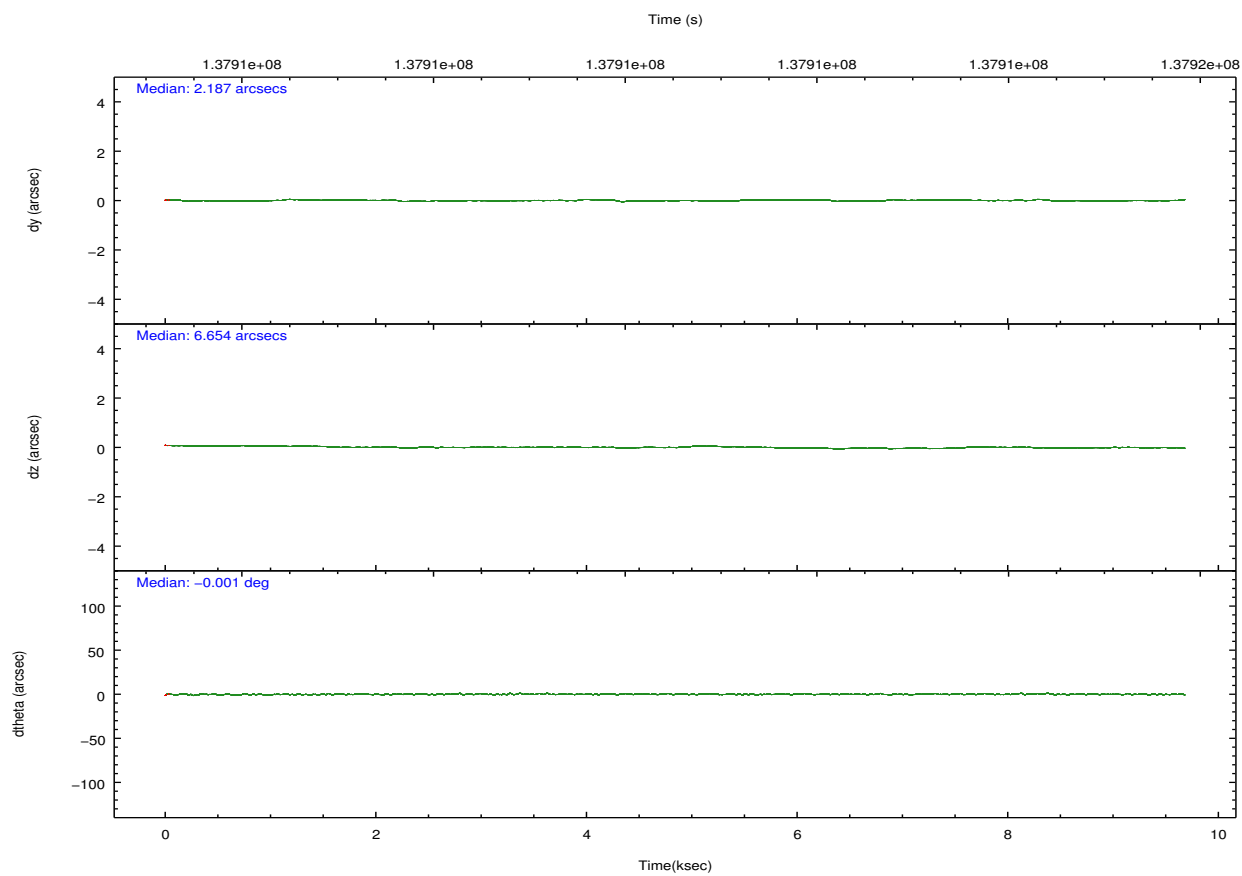
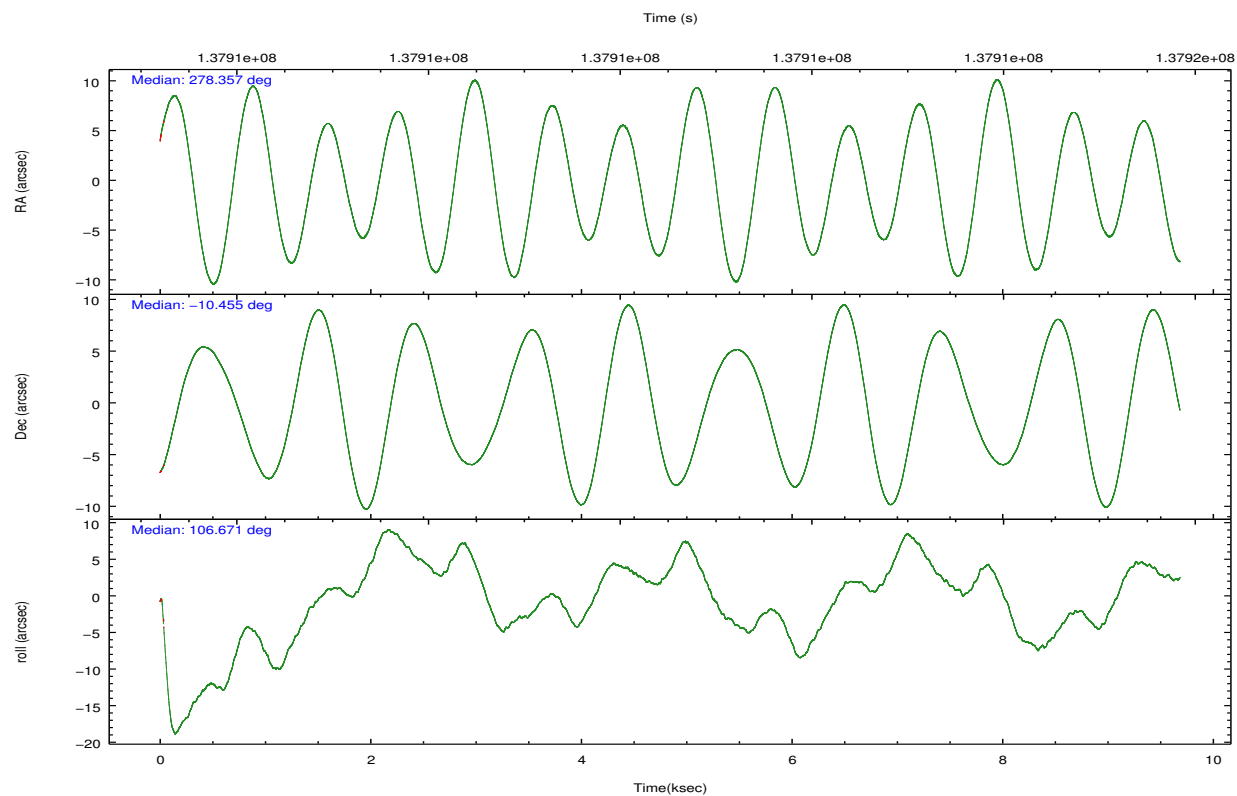
	ccd 0	ccd 1	ccd 2	ccd 3	ccd 6	ccd 7		ccd 0	ccd 1	ccd 2	ccd 3	ccd 6	ccd 7
level 1 events	17144	17974	18924	43266	19899	22054	grade 0 events	899	1410	928	18533	845	1002
rejected events	14960	14974	16790	17122	17735	12509		5%	7%	4%	42%	4%	4%
rejected %	87%	83%	88%	39%	89%	56%	grade 1 events	1	11	9	80	7	20
								0%	0%	0%	0%	0%	0%
							grade 2 events	400	484	379	3584	417	2069
								2%	2%	2%	8%	2%	9%
							grade 3 events	337	399	284	1362	314	1041
								1%	2%	1%	3%	1%	4%
							grade 4 events	297	347	309	1429	320	1004
								1%	1%	1%	3%	1%	4%
							grade 5 events	590	607	534	655	657	1952
								3%	3%	2%	1%	3%	8%
							grade 6 events	383	484	344	1678	399	4915
								2%	2%	1%	3%	2%	22%
							grade 7 events	14237	14232	16137	15945	16940	10051
								83%	79%	85%	36%	85%	45%

2.2 Compared Parameters

Parameter	Planned	Actual	Parameter	Planned	Actual
Instrument	ACIS	ACIS	Obspar format version number	7	7
Detector	ACIS-012367	ACIS-012367	Obspar file type	PREDICTED	ACTUAL
Grating	NONE	NONE	Obspar update status	NONE	UPDATED
Data mode	FAINT	FAINT	Number of optional ACIS chips dropped	0	0
Observation mode	POINTING	POINTING	On-chip summing requested	N	N
[deg] Pointing RA	278.377756	278.3574375620946	Subarray requested	CUSTOM	1/4
[deg] Pointing Dec	-10.473939	-10.45515345550956	Subarray start row	1	1
[deg] Pointing Roll	106.467468	106.6724603880223	Subarray row count	256	256
[s] Window start time (MET)	135216064.184000	135216064.184000	Alternating exposures requested	N	N
[s] Window stop time (MET)	139190464.184000	139190464.184000	[s] Primary exposure time	0.000000	1.1
[mm] SIM focus pos	-0.782348	-0.7809083437167272			
[mm] SIM defocus	0	0.001439871863259334			
[mm] SIM translation stage pos	-232.092463	-232.0989598023052			
[mm] SIM translation stage offset	-1.5	-1.493493200624528			
[s] Observation start time (MET)	137905863.184000	137904836.97191			
Observation start date	2002-05-16T03:09:59	2002-05-16T02:53:56			
[s] Observation end time (MET)	137915363.184000	137916240.60988			
Observation end date	2002-05-16T05:48:19	2002-05-16T06:04:00			
Read mode	TIMED	TIMED			

2.3 Aspect



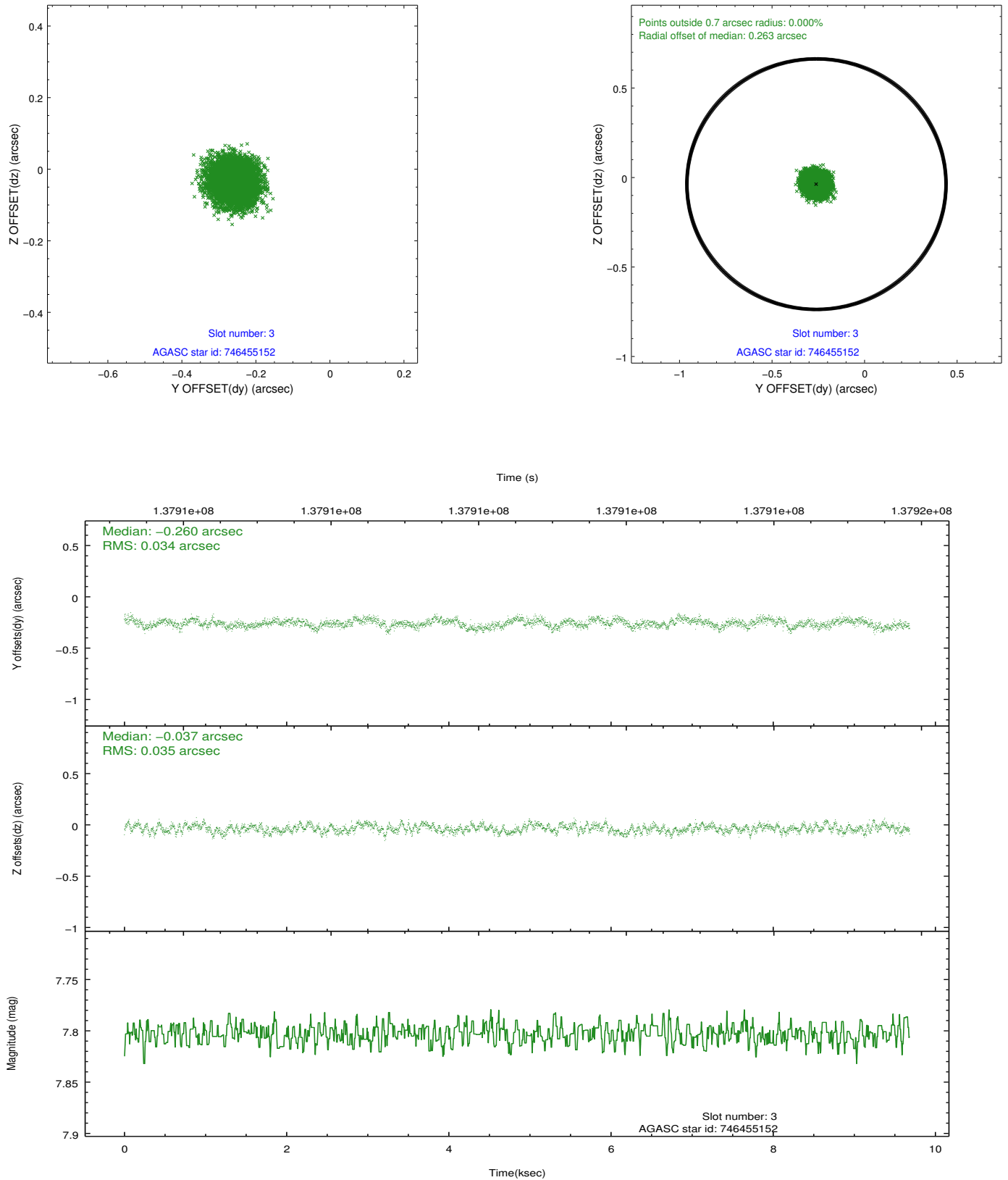


Slot Statistics

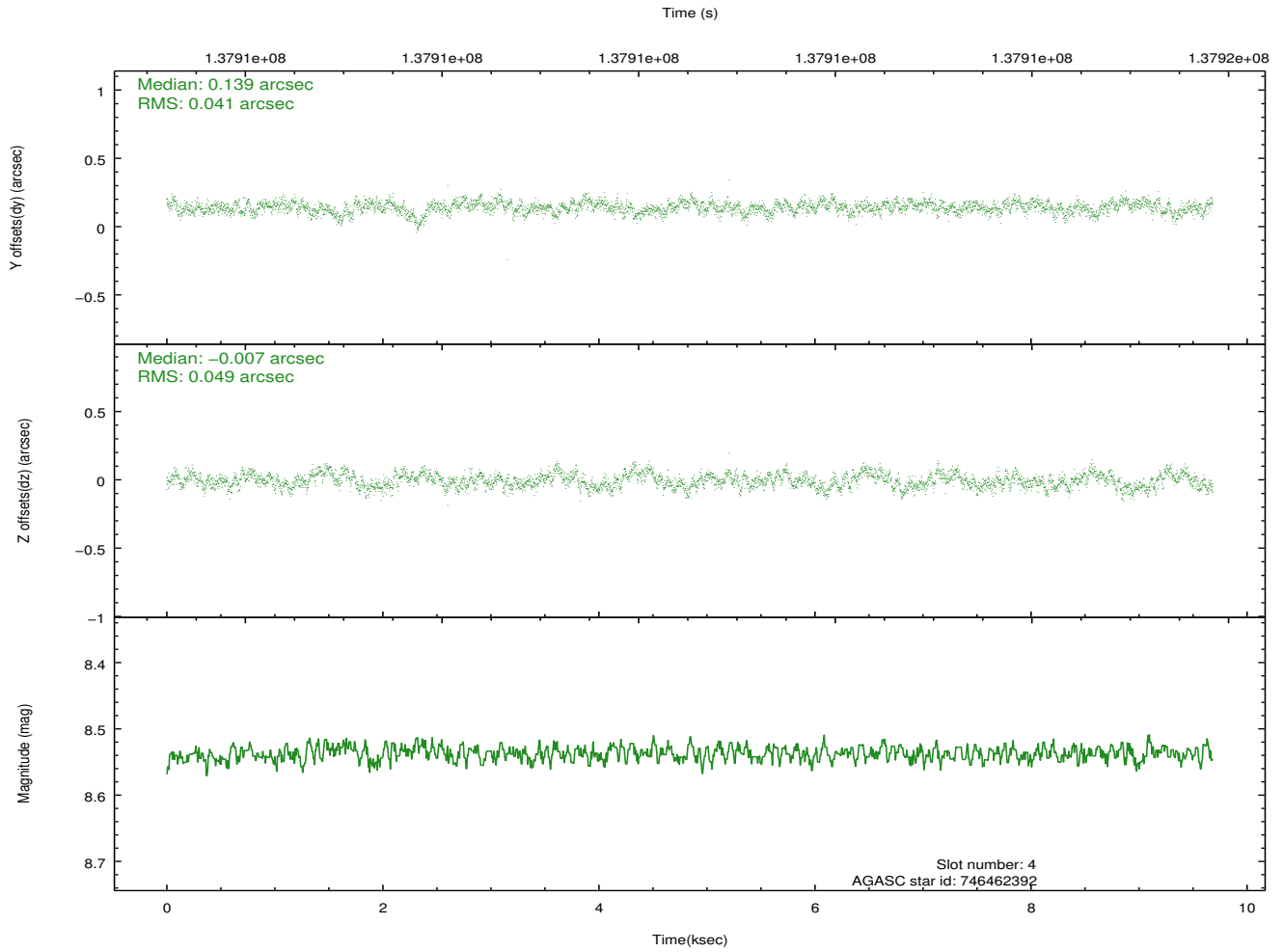
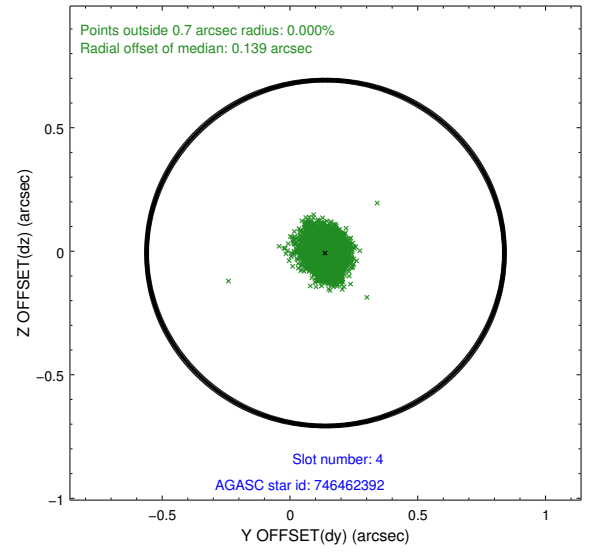
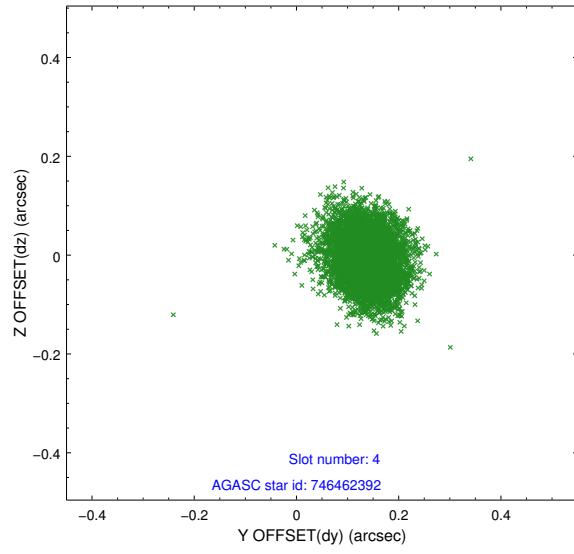
slot	status	id	mag	n_pts	med_dy	med_dz	dr1	dr2	ra	dec	mean_y	mean_z
0	FID	ACIS-I-1	7.25	2361	0.020	0.055	0.006	0.011	0.000000	0.000000	937.60	-860.58
1	FID	ACIS-I-5	7.24	2361	-0.093	0.071	0.006	0.010	0.000000	0.000000	-1810.27	1036.69
2	FID	ACIS-I-6	7.26	2361	-0.018	-0.056	0.007	0.012	0.000000	0.000000	402.56	1681.65
3	GUIDE	746455152	7.80	4722	-0.260	-0.037	0.053	0.081	278.447893	-9.976732	1645.65	-746.18
4	GUIDE	746462392	8.54	4723	0.139	-0.007	0.069	0.109	279.038421	-10.890715	-2103.45	-1814.54
5	GUIDE	746455112	8.94	4719	0.139	-0.011	0.078	0.125	278.266531	-10.703234	-680.59	610.42
6	GUIDE	746460328	9.80	4636	-0.124	0.015	0.182	0.272	278.603974	-9.898096	1759.83	-1356.88
7	GUIDE	746461728	9.77	4717	0.115	0.032	0.132	0.210	278.986921	-10.530755	-808.93	-2009.67

2.4 Star Slots

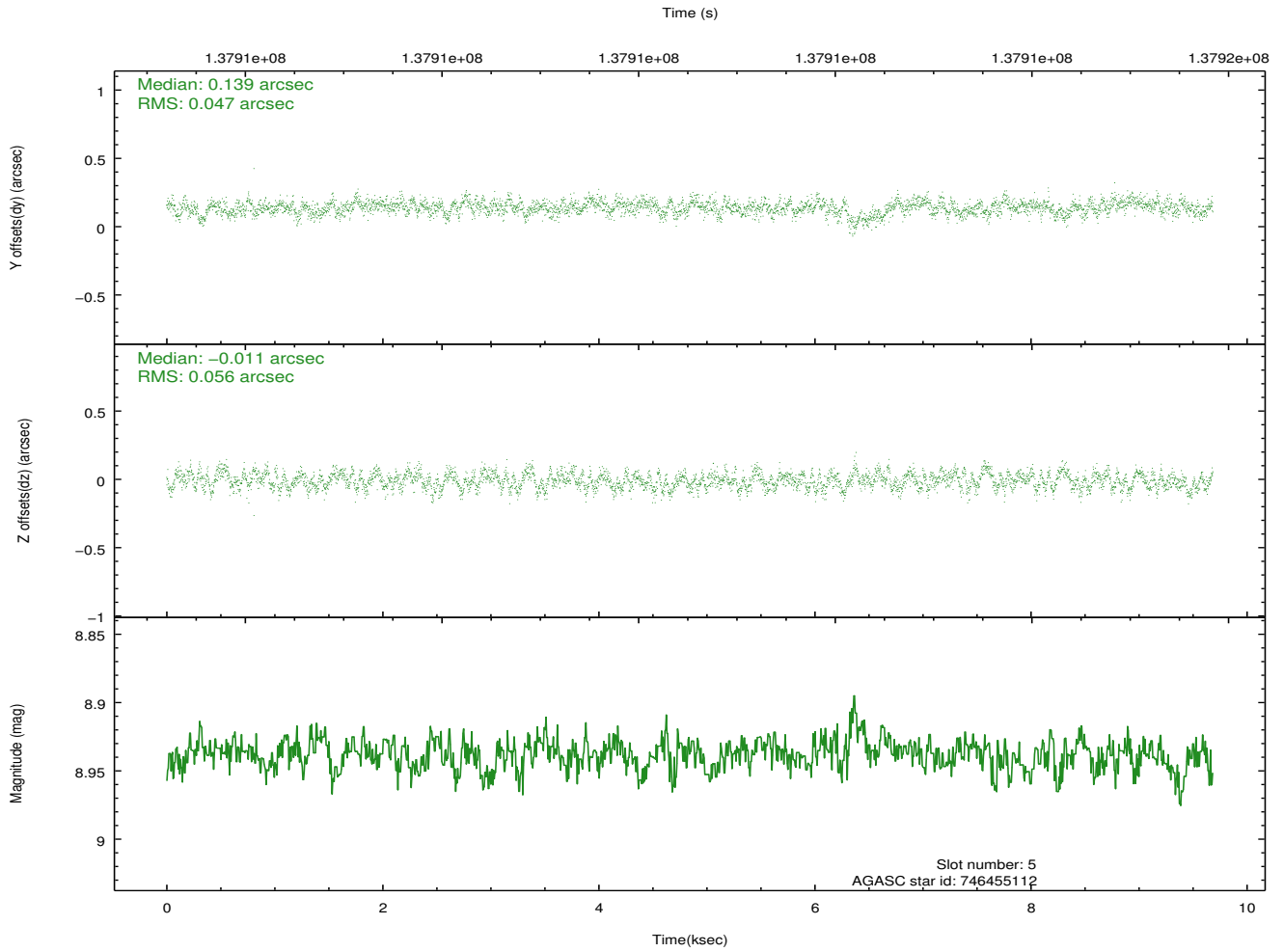
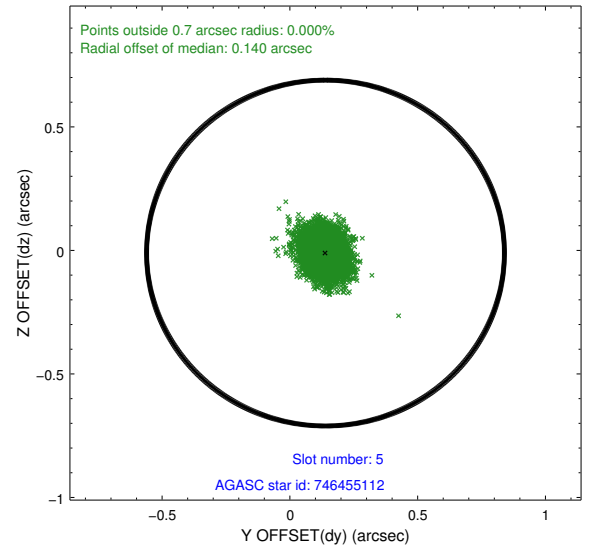
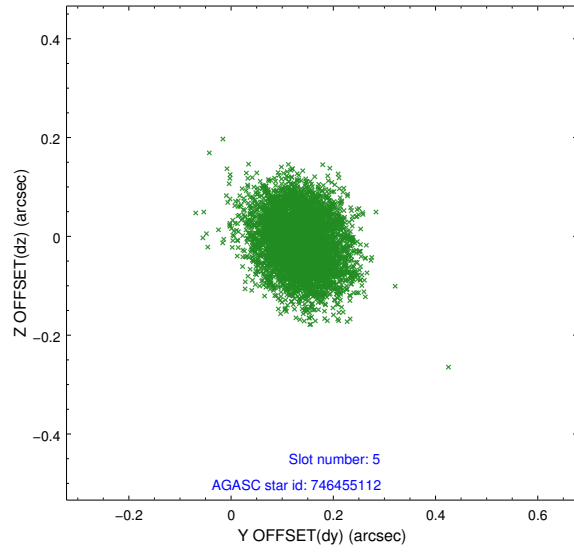
2.4.1 Slot 3



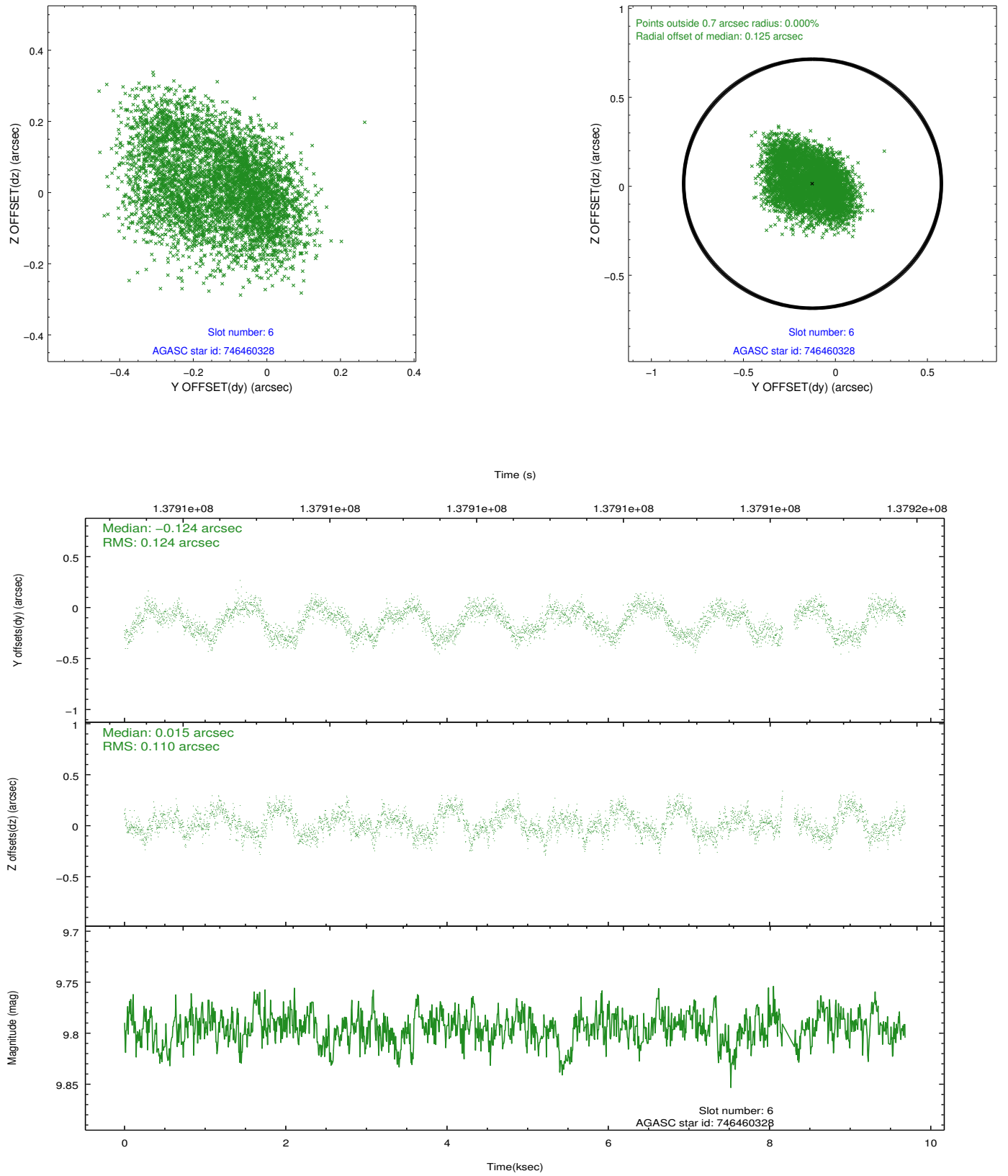
2.4.2 Slot 4



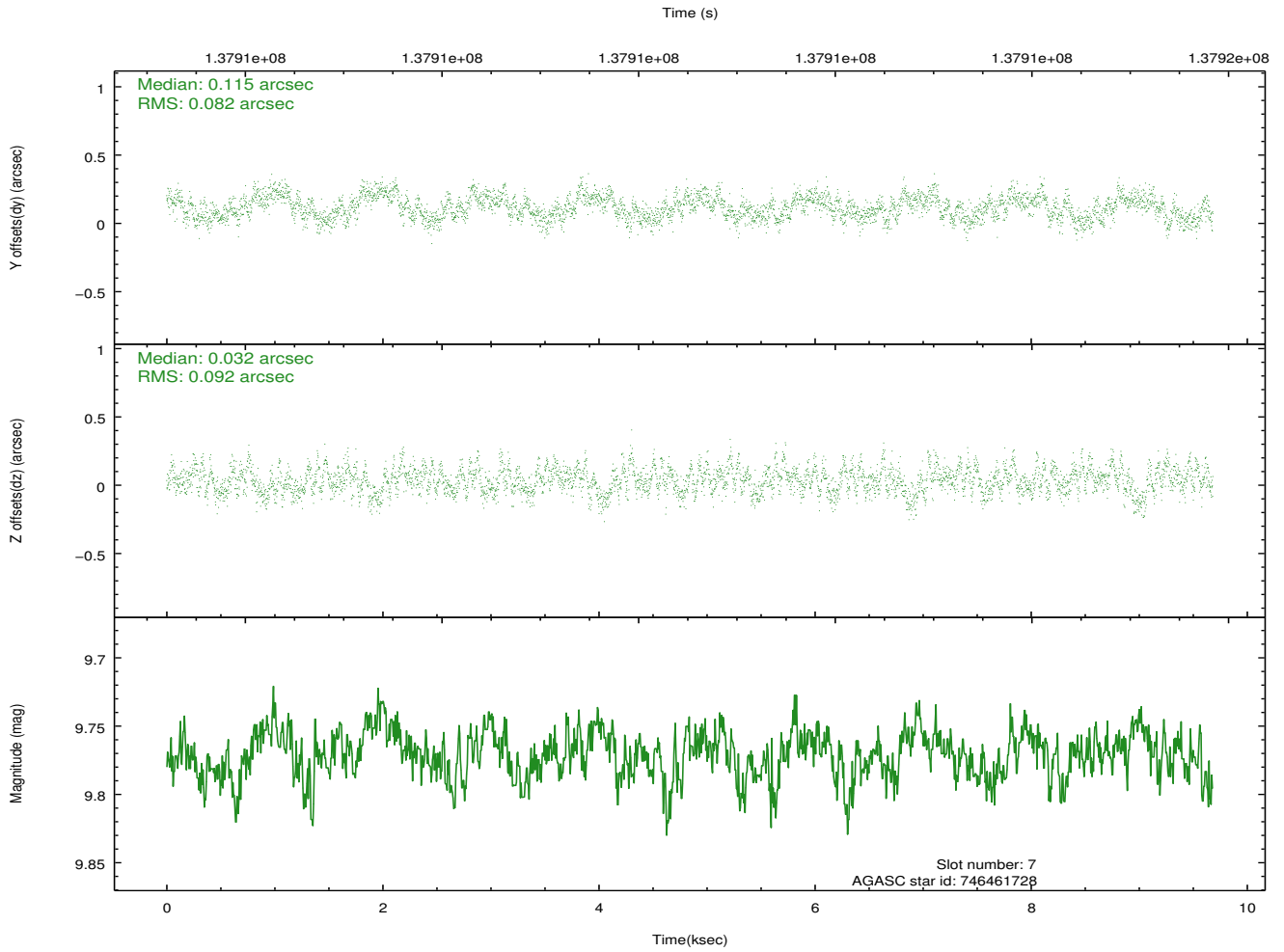
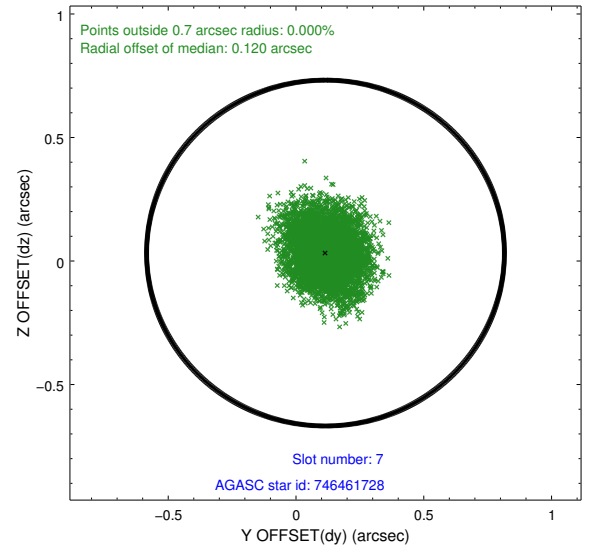
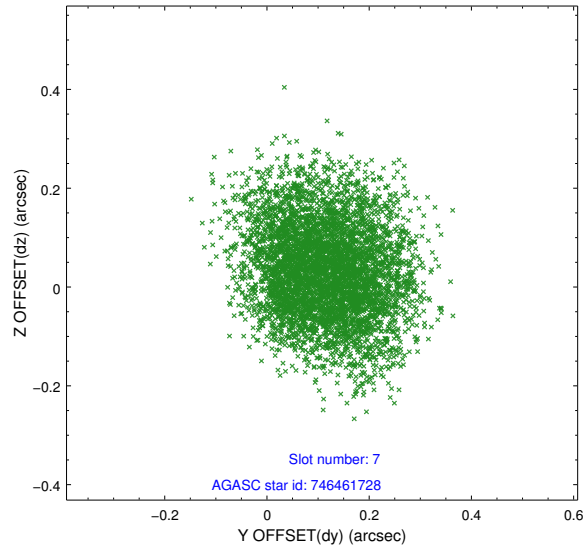
2.4.3 Slot 5



2.4.4 Slot 6

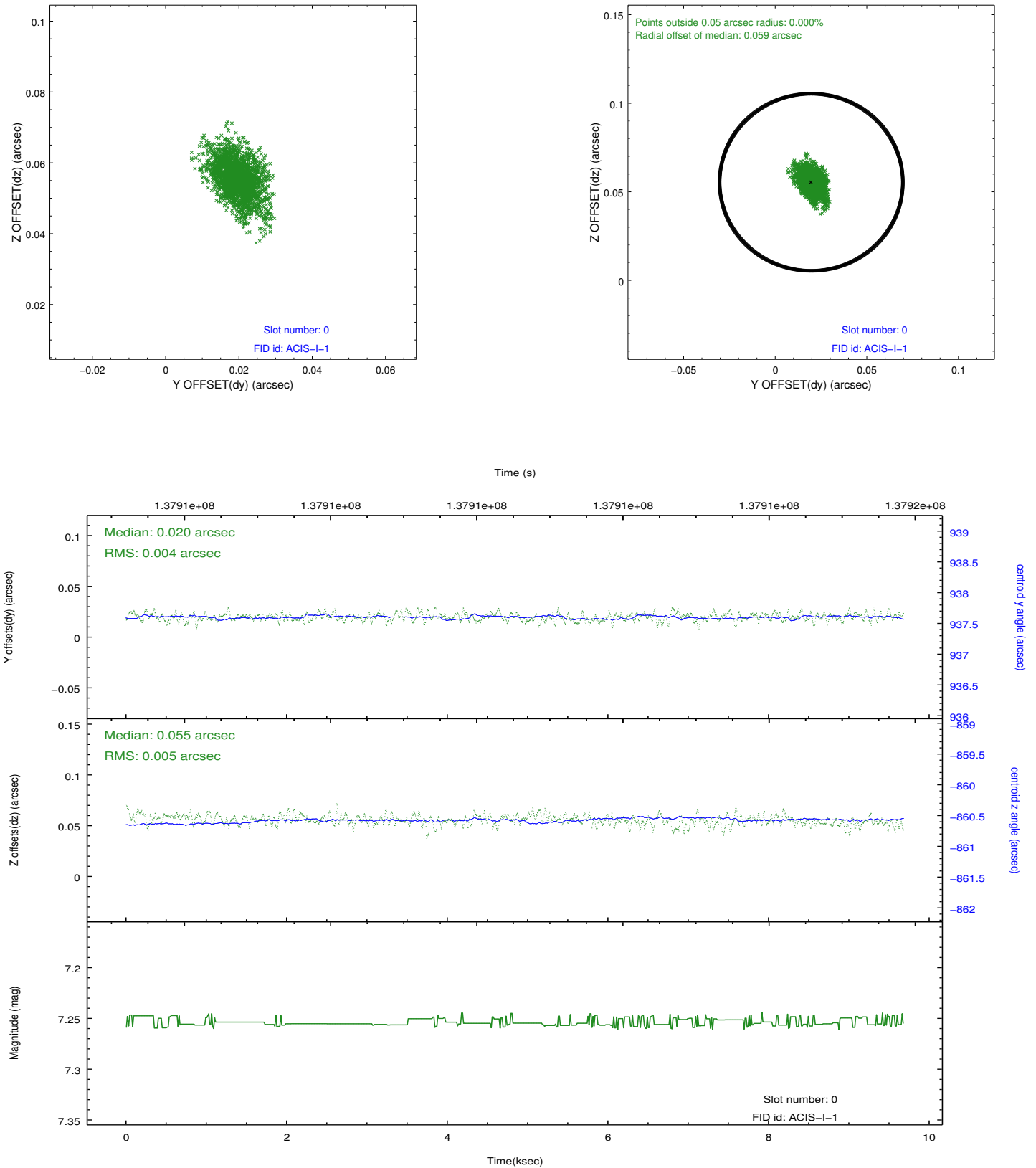


2.4.5 Slot 7

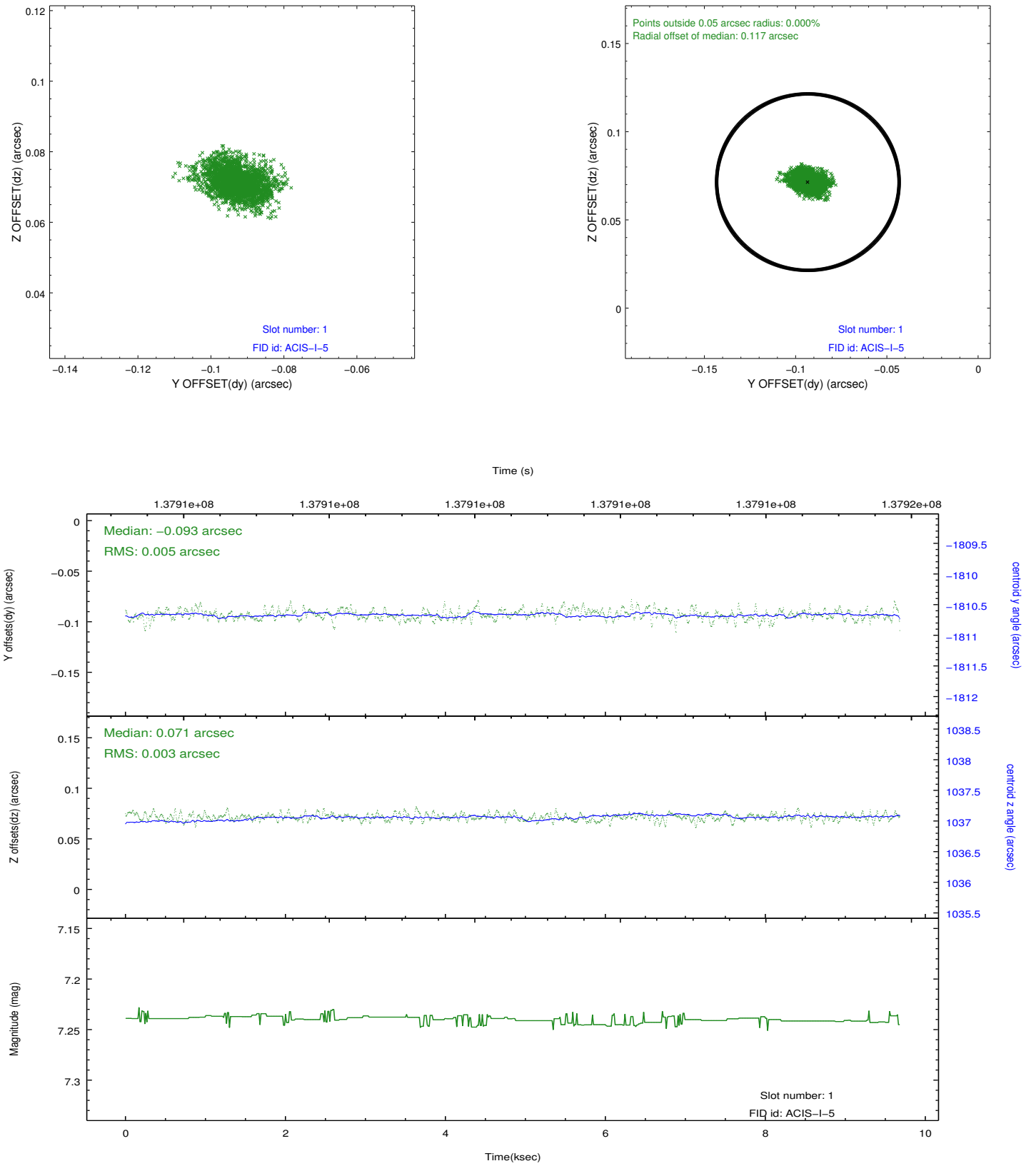


2.5 FID Slots

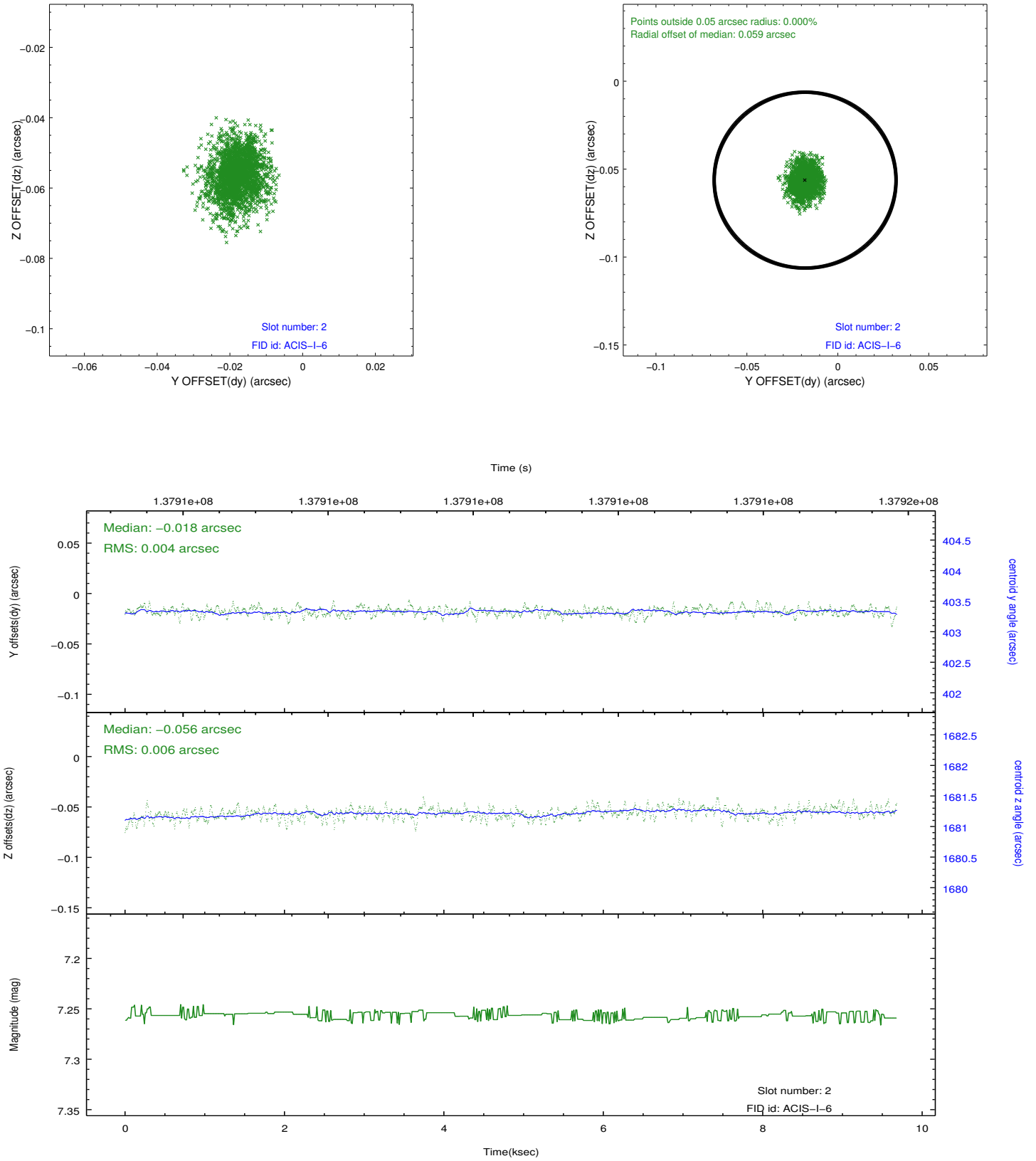
2.5.1 Slot 0



2.5.2 Slot 1



2.5.3 Slot 2



A Summary

A.1 Status

V&V Scientist	Beth Sundheim
V&V Date (YYYY-MM-DD)	2012.10.16
V&V Edition	1
V&V Disposition and Status	OK
V&V Charge Time	9.672

A.2 Comments

Window preference met.