

V&V Reference Report

L2 ASCDS Version : 8.4.5

Observation 3503 - L2 Version 3
Chandra X-Ray Center

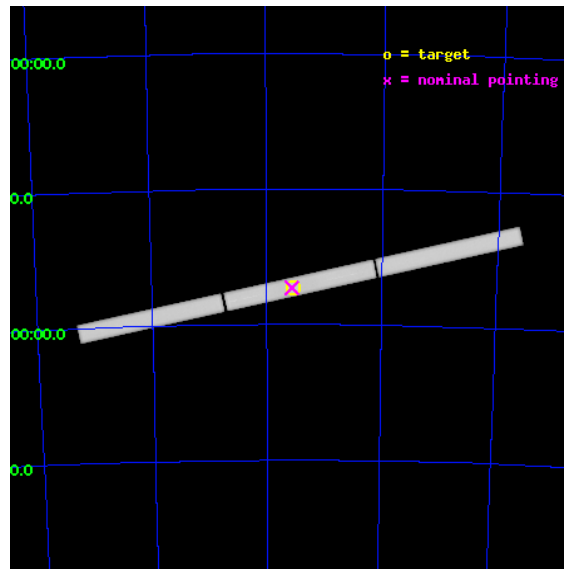
L2 Processing Date : Nov 9 2012

Contents

1	Front	2
2	OBI	3
2.1	OBI	3
2.1.1	Images	3
2.1.2	Parameters	4
2.1.3	Events	4
2.2	Compared Parameters	5
2.3	Aspect	6
2.4	Star Slots	9
2.4.1	Slot 3	9
2.4.2	Slot 4	10
2.4.3	Slot 5	11
2.4.4	Slot 6	12
2.4.5	Slot 7	13
2.5	FID Slots	14
2.5.1	Slot 0	14
2.5.2	Slot 1	15
2.5.3	Slot 2	16
3	Gratings	17
3.1	LETG Arm	17
A	Summary	19
A.1	Status	19
A.2	Comments	19

1 Front

seq_num	300091	Sequence number
obs_id	3503	Observation id
title	NEAR-EDDINGTON ACCRETION IN THE BINARY SUPERSOFT X-RAY SOURCE RX J0513.3-6951	Proposal title
observer	Dr. Peter Predehl	Principal investigator
object	RXJ0513.9-6951	Source name
ra_targ	78.461667	Observer's specified target RA [deg]
dec_targ	-69.863056	Observer's specified target Dec [deg]
ra_nom	78.474806976744	Nominal RA [deg]
dec_nom	-69.86420786922	Nominal Dec [deg]
roll_nom	347.4998080286	Nominal Roll [deg]
revision	3	Processing version of data
ontime	47981.533336192	[s]
livetime	47651.821517544	Ontime multiplied by DTCOR
l2events	2864641	Number of level 2 events

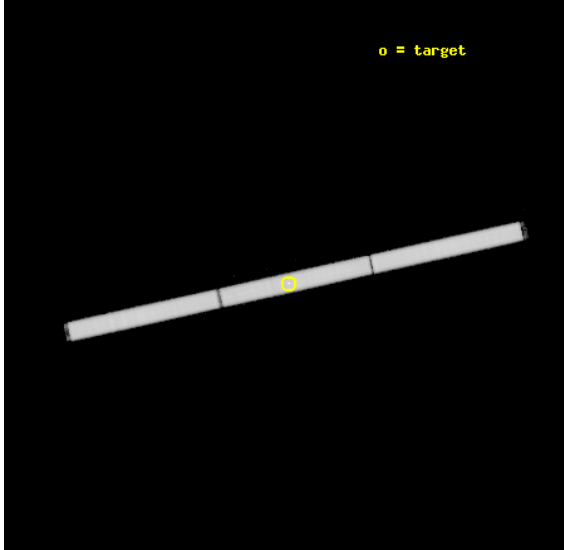


2 OBI

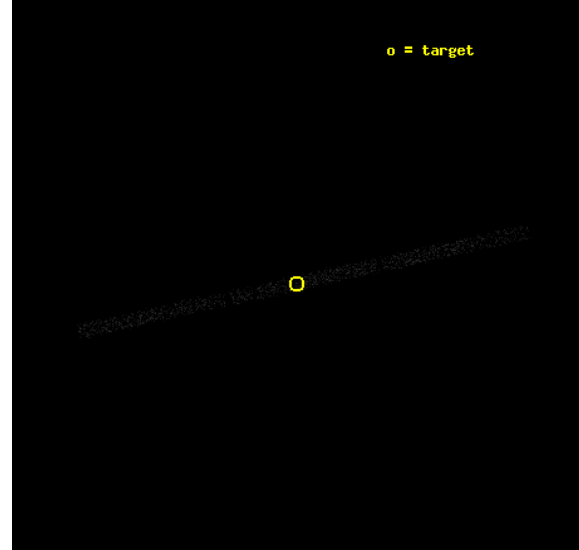
2.1 OBI

2.1.1 Images

Level 1 Image



Level 1 Bad Events



2.1.2 Parameters

obi_num	1	Obi number	sched_exp_time	48000.000000	[s] Scheduled observation exposure time
ascdsver	8.4.5	Processing system revision	ontime	47981.533336192	[s]
caldbver	4.5.2	 	l1events	3715549	Number of level 1 events
date	2012-11-09T15:48:45	Date and time of file creation			
revision	3	Processing version of data			

2.1.3 Events

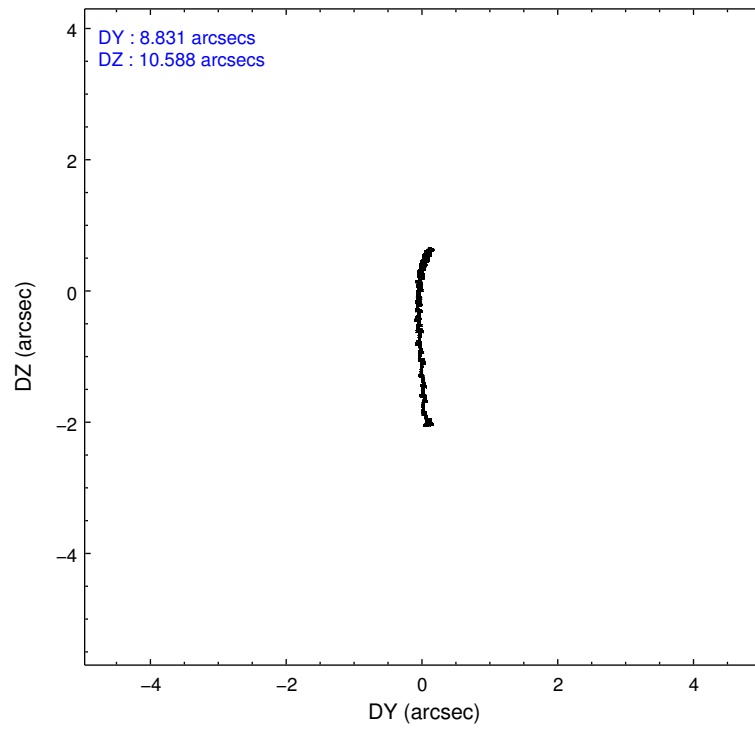
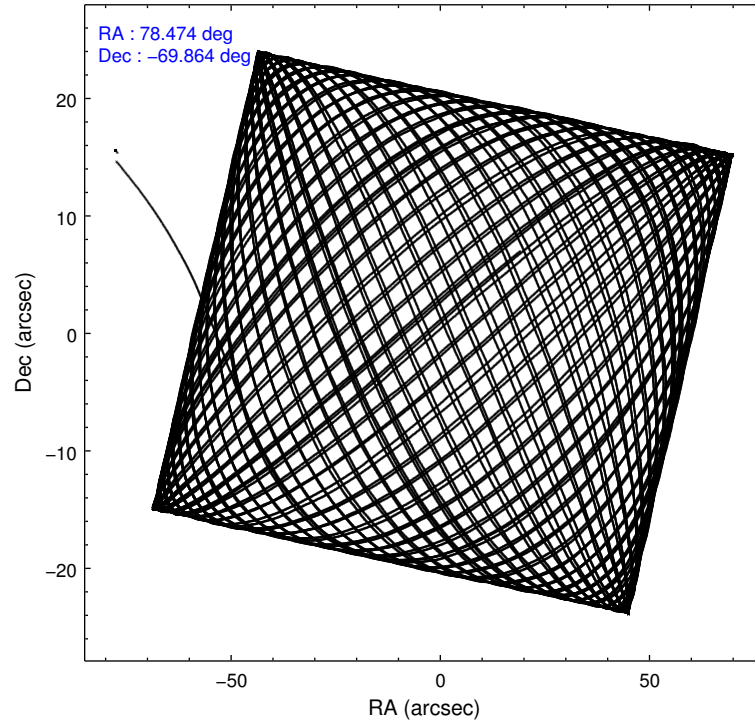
Level 1 Events

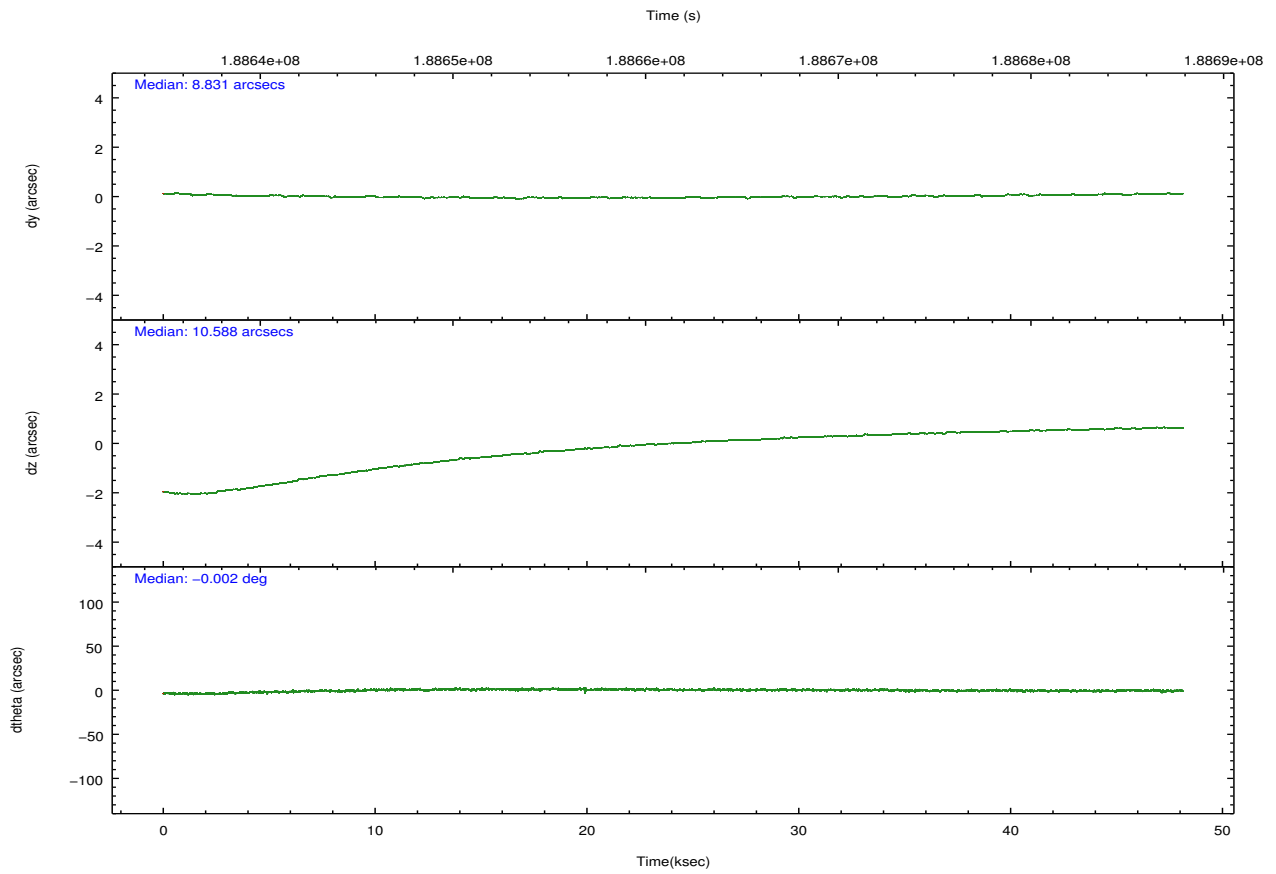
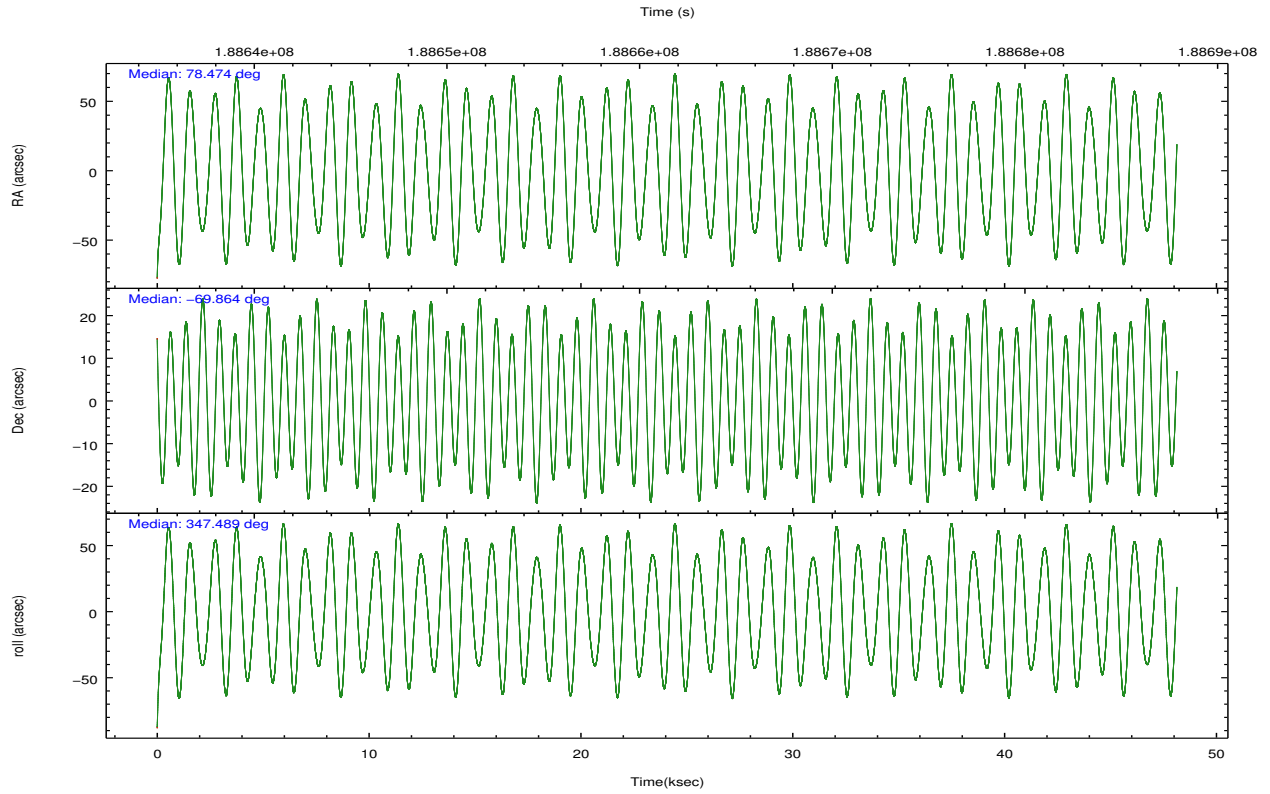
	segment 1	segment 2	segment 3
level 1 events	1281964	1207954	1225631
rejected events	1678	1778	1687
rejected %	0%	0%	0%

2.2 Compared Parameters

Parameter	Planned	Actual	Parameter	Planned	Actual
Instrument	HRC	HRC	Obspar format version number	7	7
Detector	HRC-S	HRC-S	Obspar file type	PREDICTED	ACTUAL
Grating	LETG	LETG	Obspar update status	NONE	UPDATED
Data mode	OBSERVING	OBSERVING			
Observation mode	POINTING	POINTING			
[deg] Pointing RA	78.396908	78.47480697674429			
[deg] Pointing Dec	-69.874123	-69.86420786922037			
[deg] Pointing Roll	347.359343	347.4998080285972			
[mm] SIM focus pos	-1.429586	-1.428180813131781			
[mm] SIM defocus	0.1037507710433287	0.1051558262725154			
[mm] SIM translation stage pos	250.455976	250.4635187648994			
[mm] SIM translation stage offset	0	-0.007540371344731511			
[s] Observation start time (MET)	188637495.184000	188636593.9815			
Observation start date	2003-12-24T07:17:11	2003-12-24T07:03:13			
[s] Observation end time (MET)	188685495.184000	188685935.94615			
Observation end date	2003-12-24T20:37:11	2003-12-24T20:45:35			

2.3 Aspect



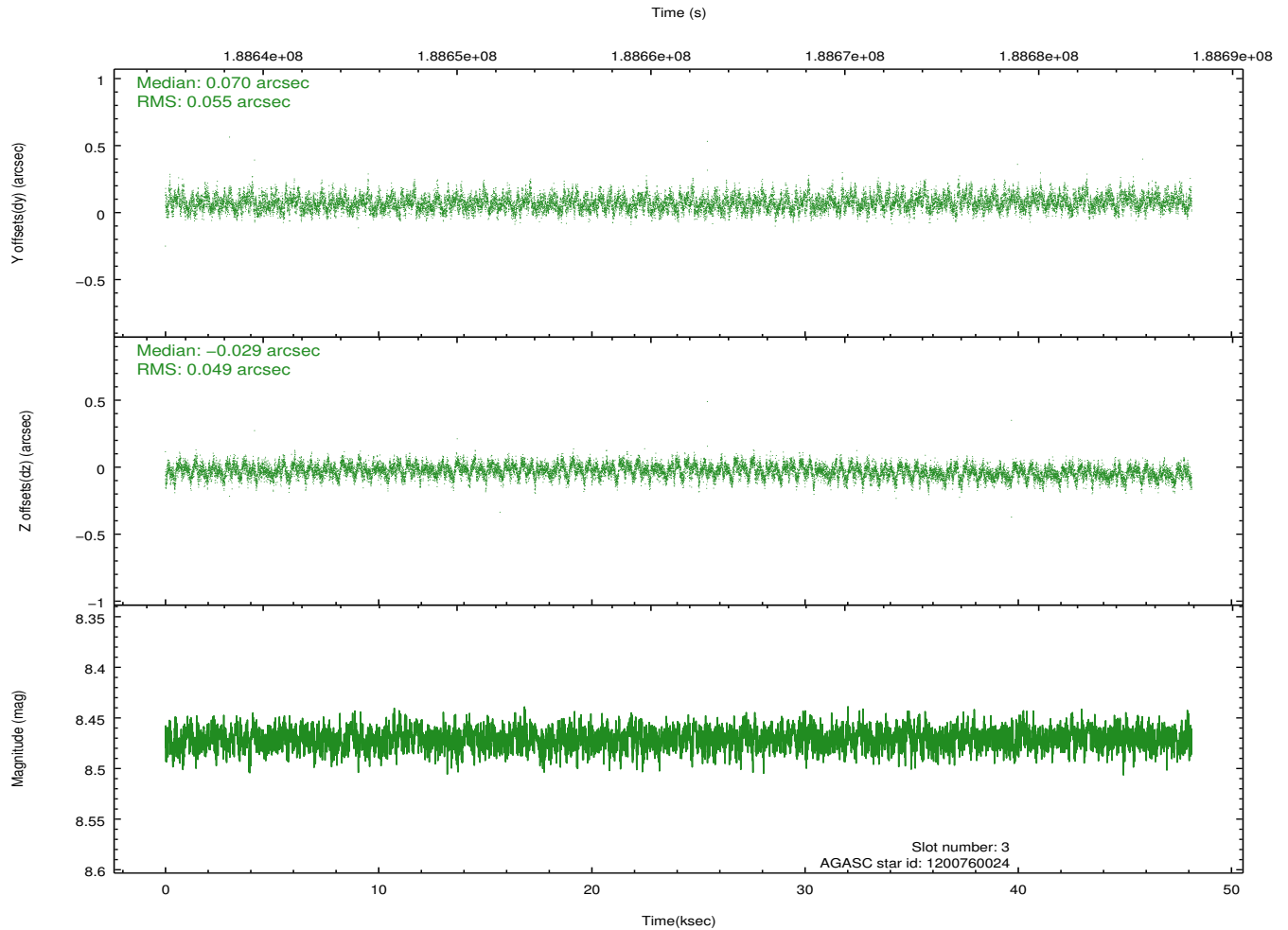
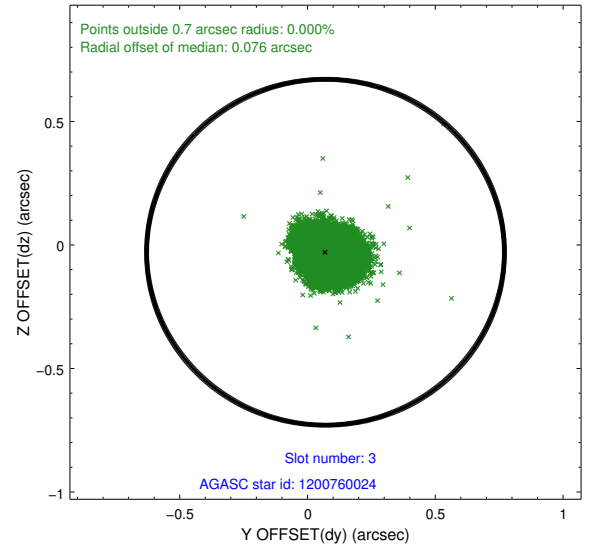
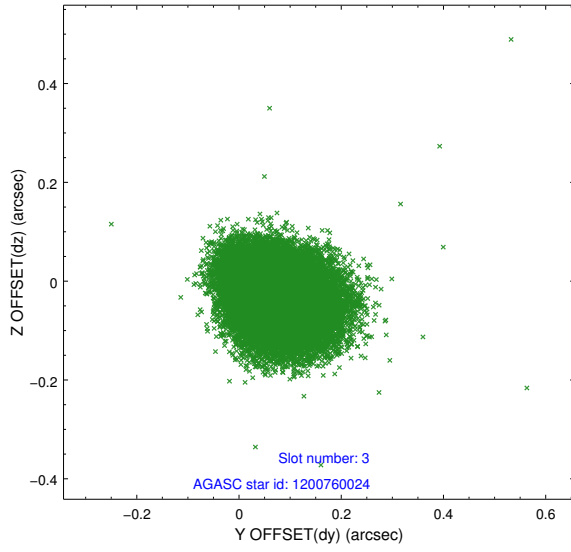


Slot Statistics

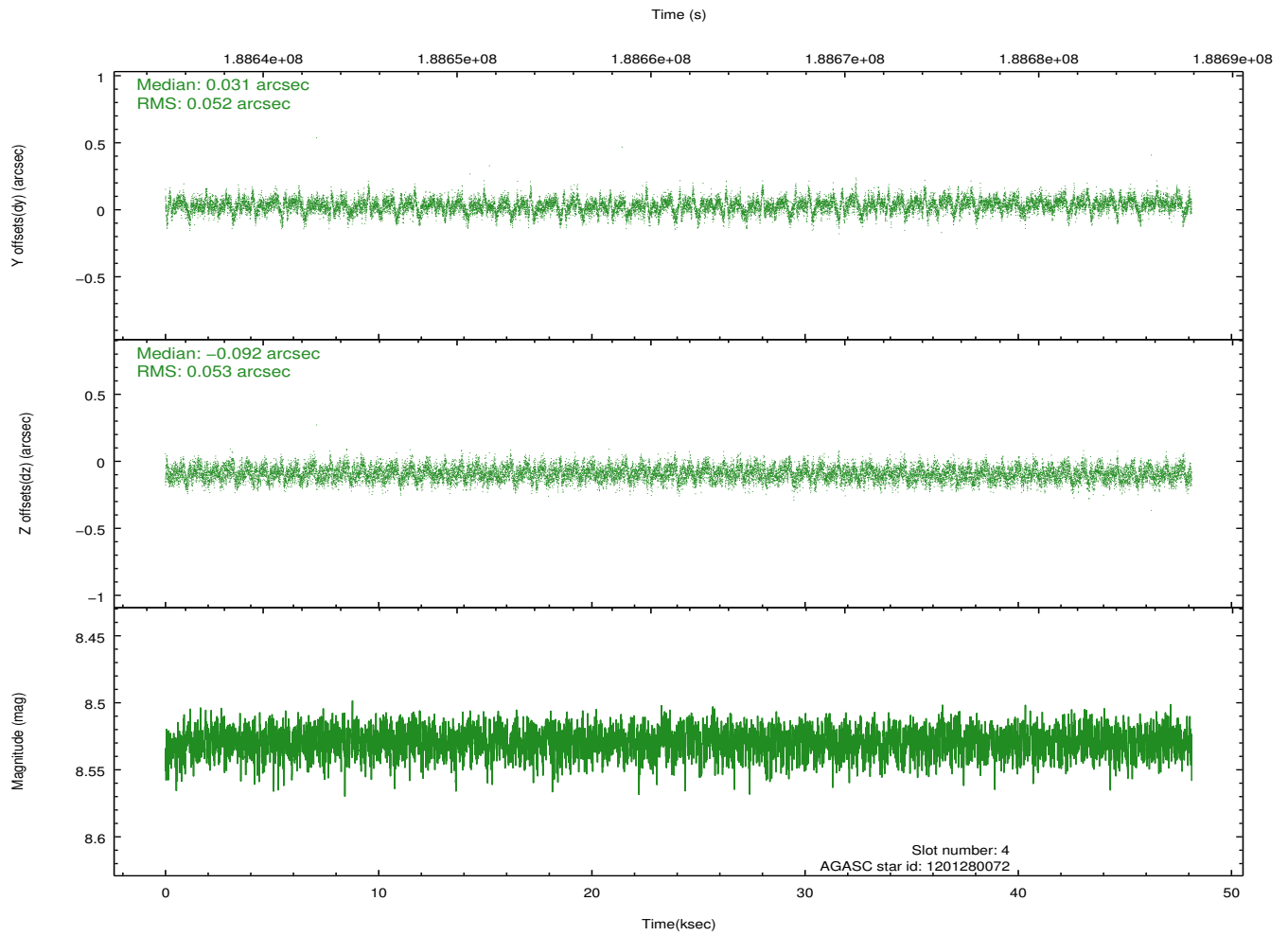
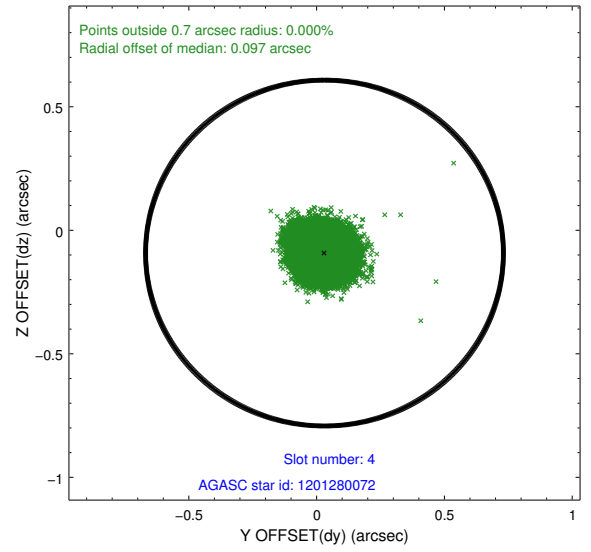
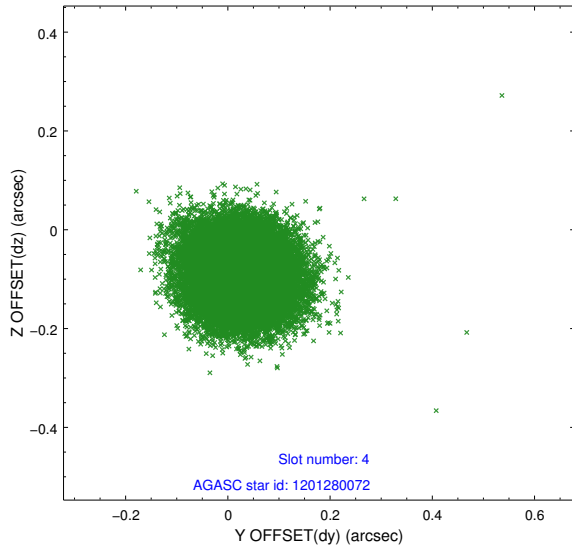
slot	status	id	mag	n_pts	med_dy	med_dz	dr1	dr2	ra	dec	mean_y	mean_z
0	FID	HRC-S-1	6.98	11741	0.151	-0.171	0.020	0.029	0.000000	0.000000	-1163.03	-458.95
1	FID	HRC-S-2	6.97	11742	0.117	-0.104	0.011	0.018	0.000000	0.000000	1236.52	-451.60
2	FID	HRC-S-3	6.99	11742	0.123	-0.026	0.023	0.034	0.000000	0.000000	-1165.65	570.69
3	GUIDE	1200760024	8.47	23481	0.070	-0.029	0.078	0.127	77.625244	-69.320410	-1391.93	1724.44
4	GUIDE	1201280072	8.53	23478	0.031	-0.092	0.079	0.128	77.357470	-69.714246	-1389.02	267.31
5	GUIDE	1201409432	9.03	23378	-0.026	0.116	0.094	0.165	79.317334	-70.259796	1398.21	-1117.41
6	GUIDE	1201411776	8.87	23470	-0.015	-0.000	0.081	0.132	79.010603	-70.456328	1181.44	-1886.34
7	GUIDE	1201407648	9.14	23475	-0.060	0.010	0.098	0.159	78.636737	-70.585025	841.01	-2434.48

2.4 Star Slots

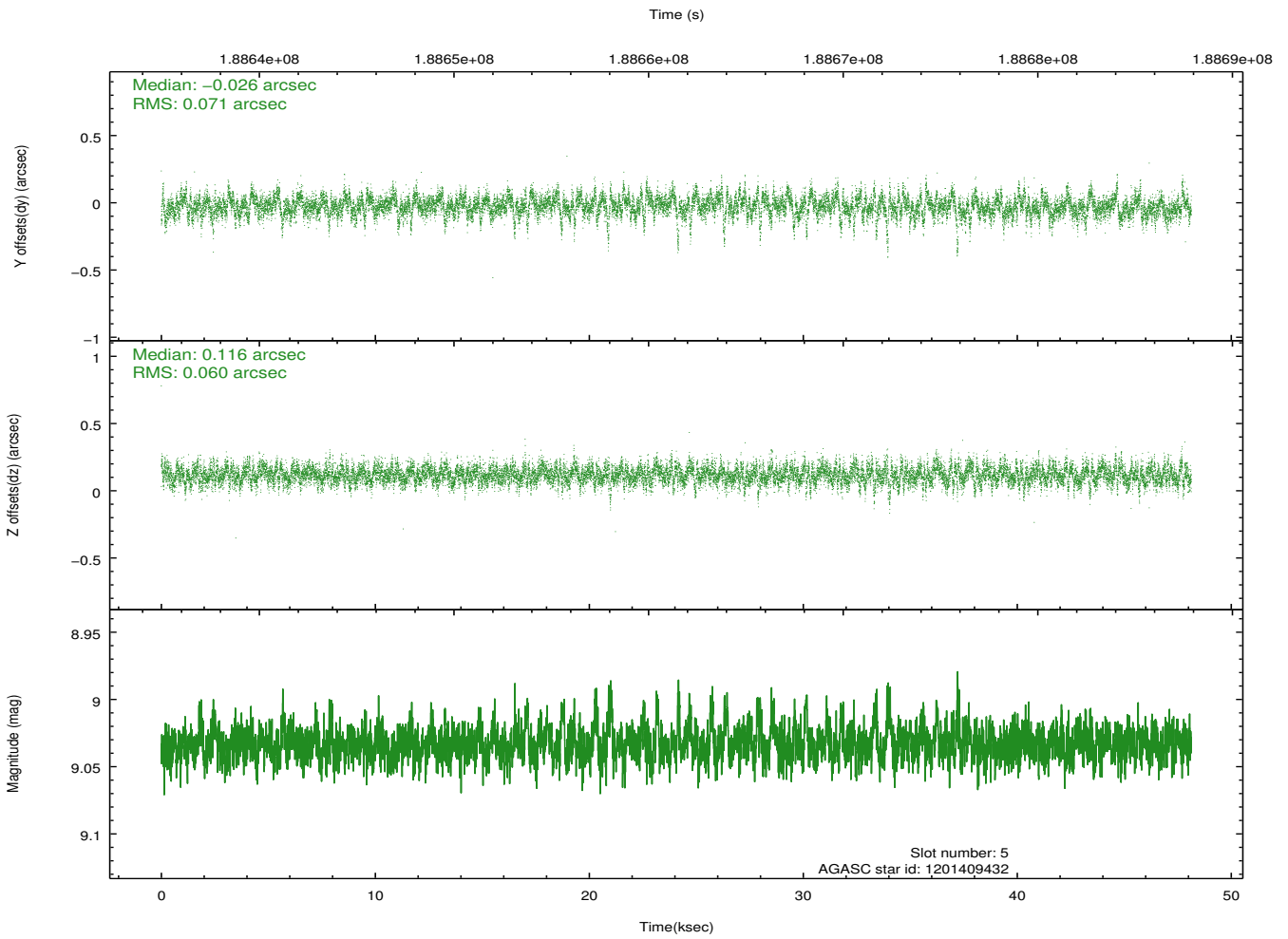
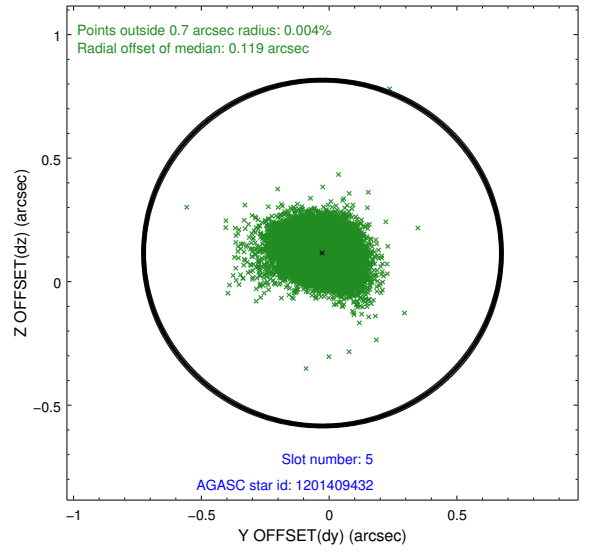
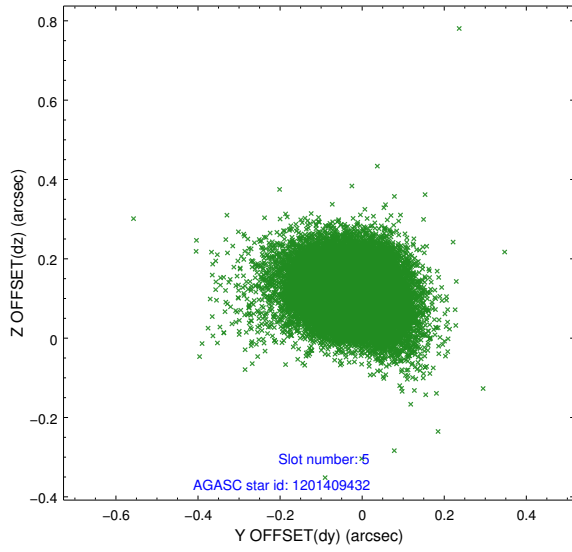
2.4.1 Slot 3



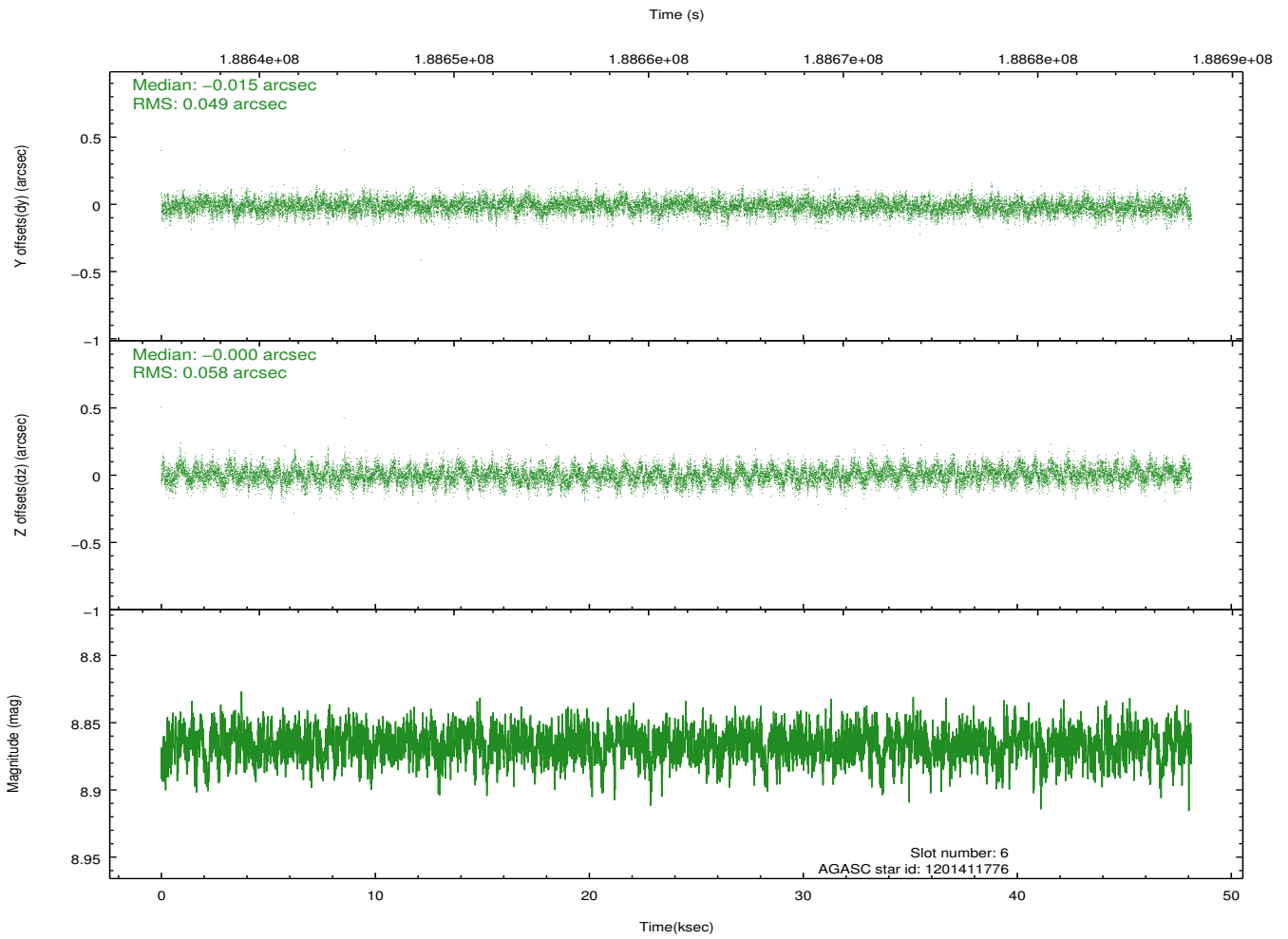
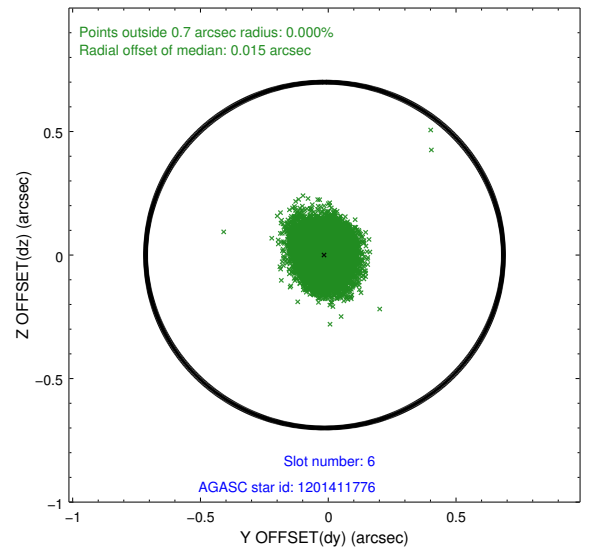
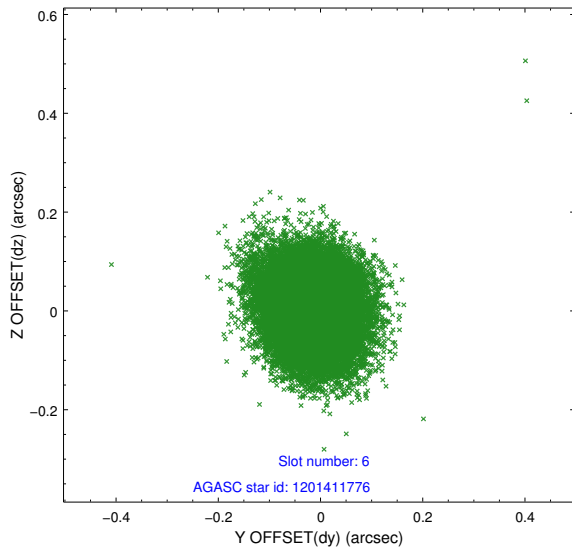
2.4.2 Slot 4



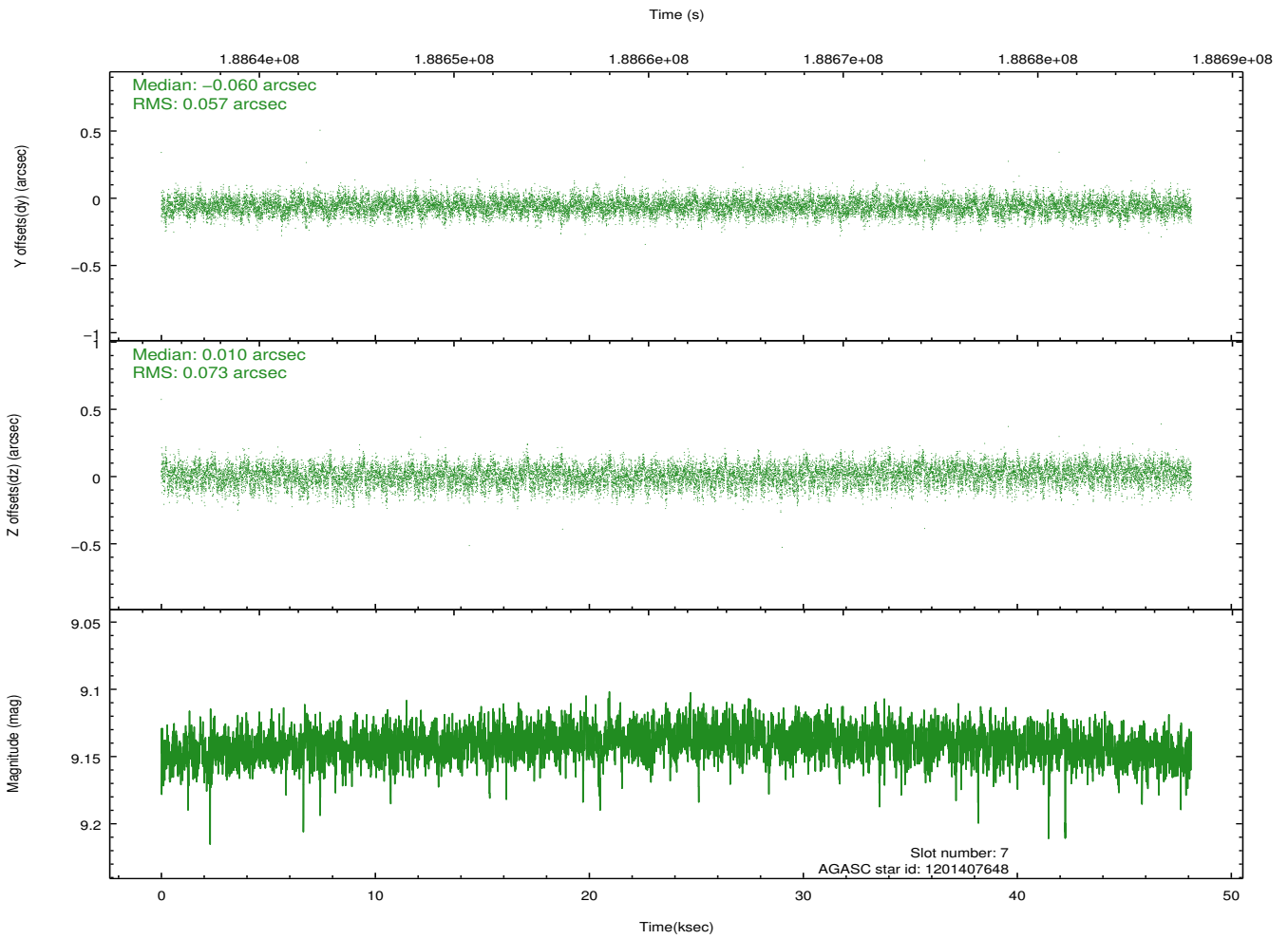
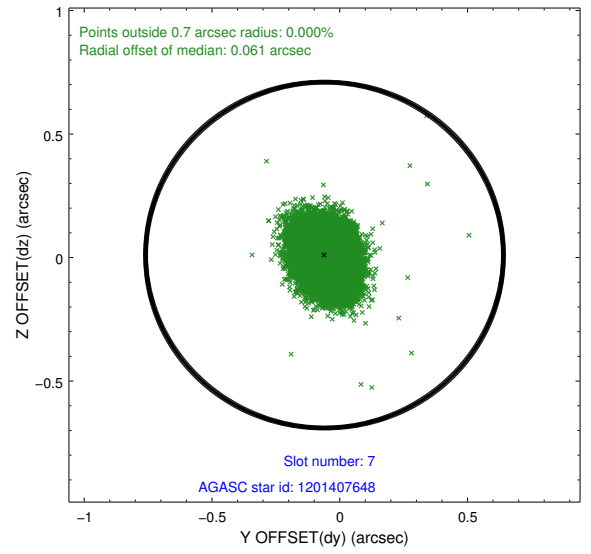
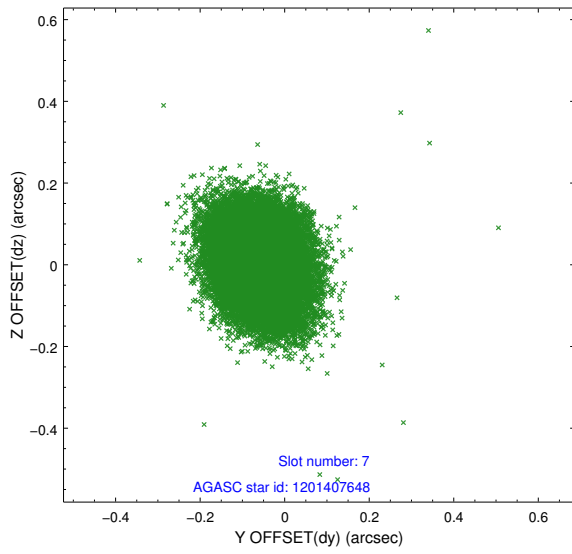
2.4.3 Slot 5



2.4.4 Slot 6

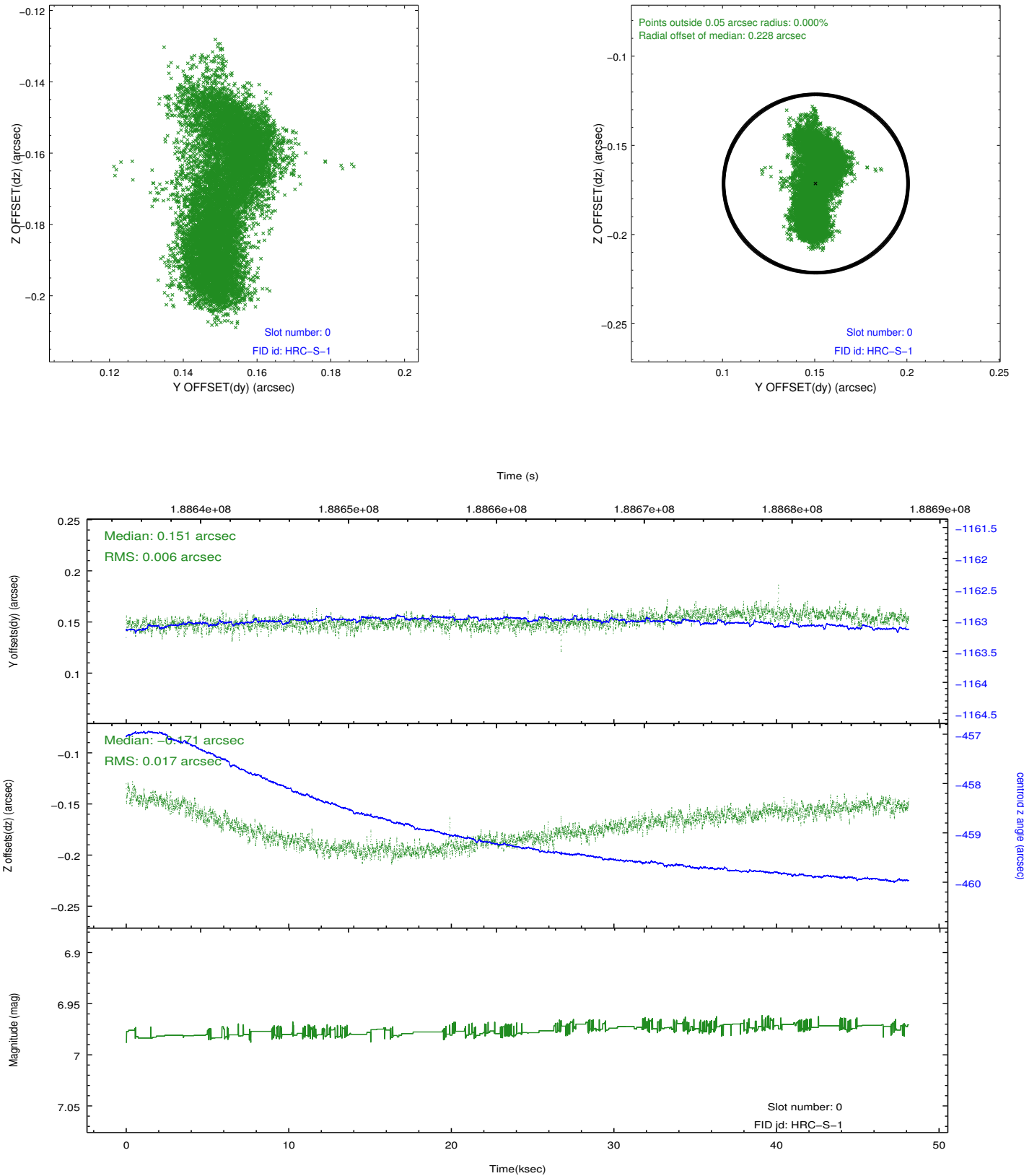


2.4.5 Slot 7

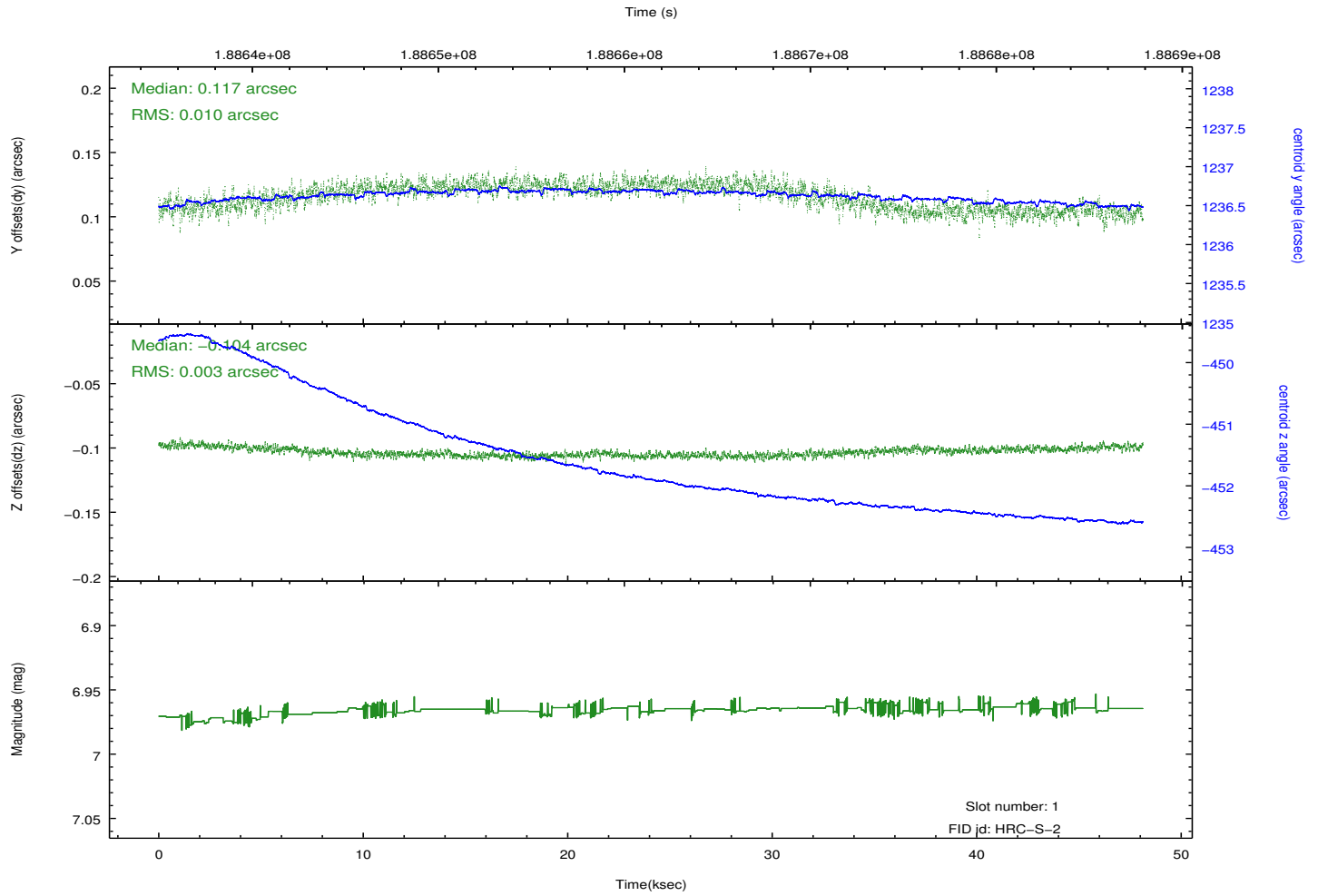
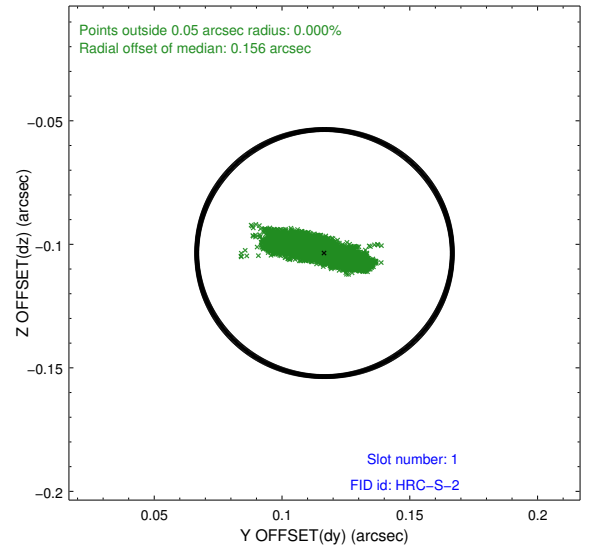
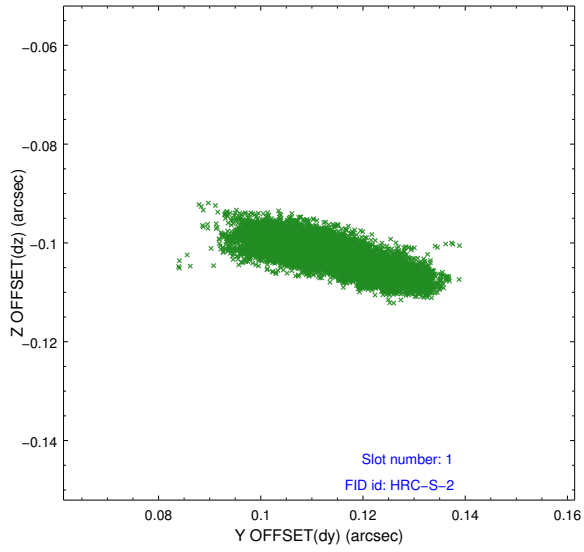


2.5 FID Slots

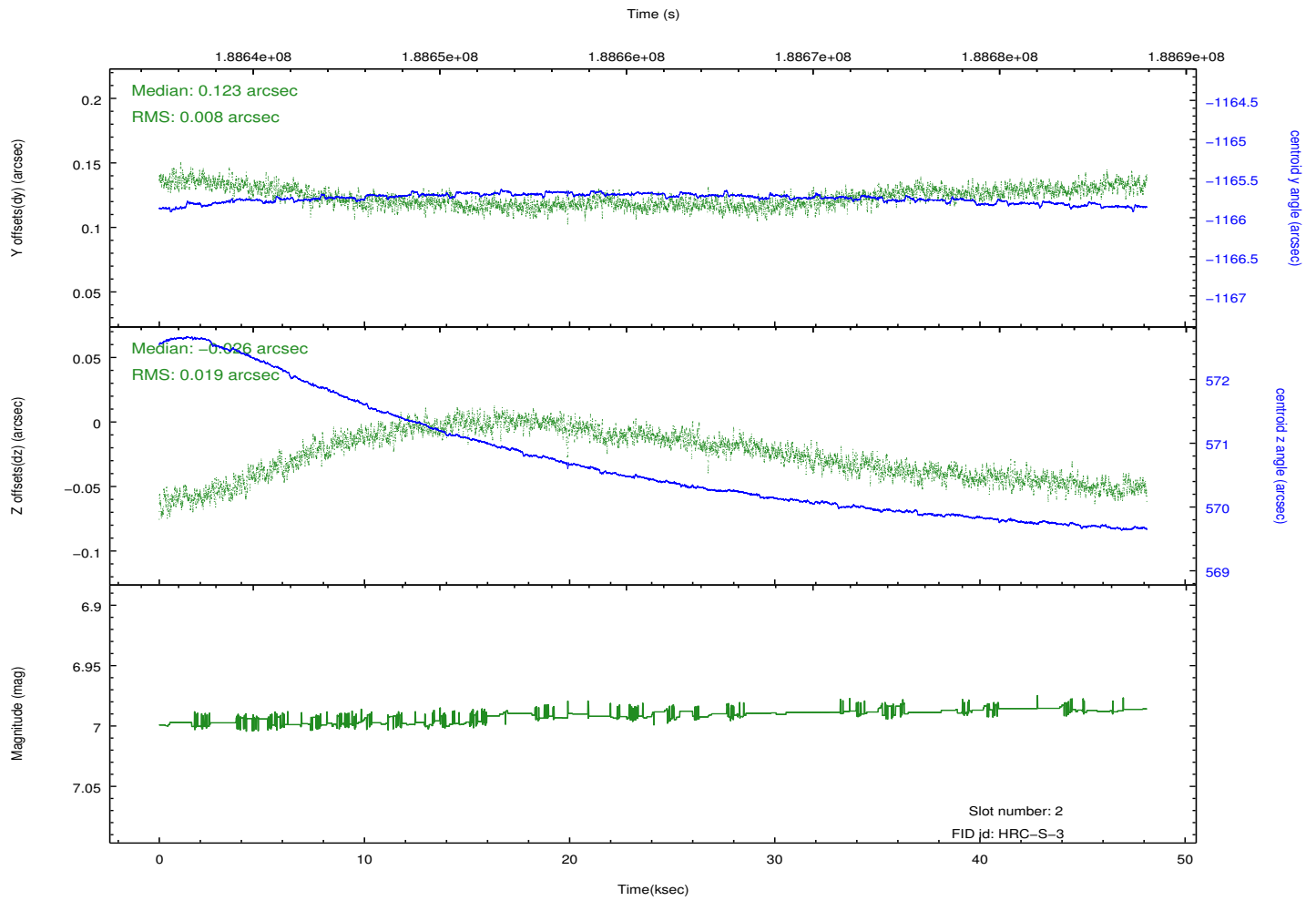
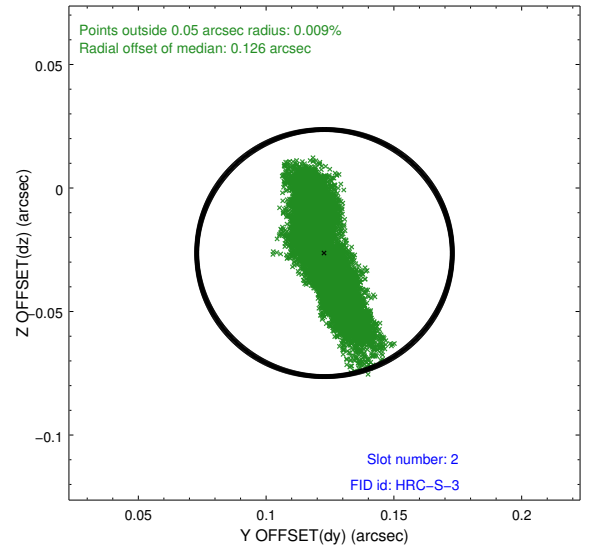
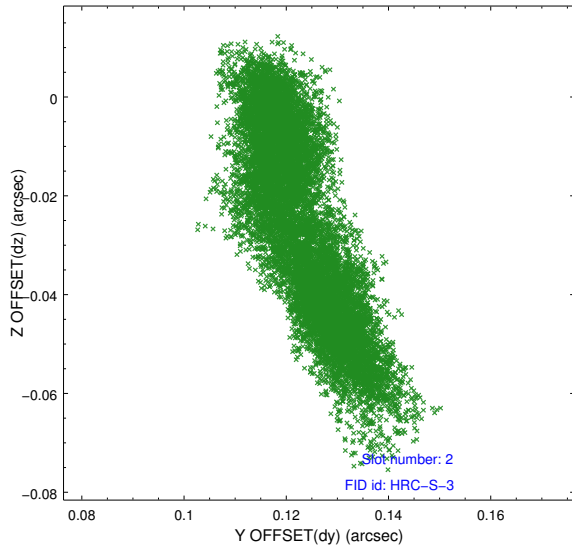
2.5.1 Slot 0



2.5.2 Slot 1

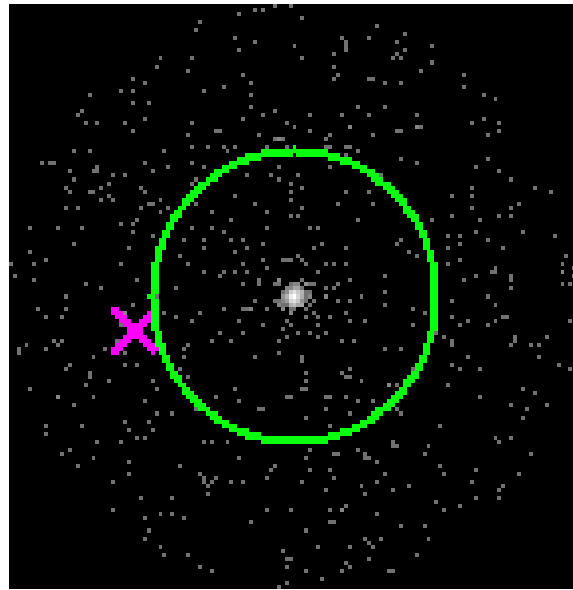


2.5.3 Slot 2

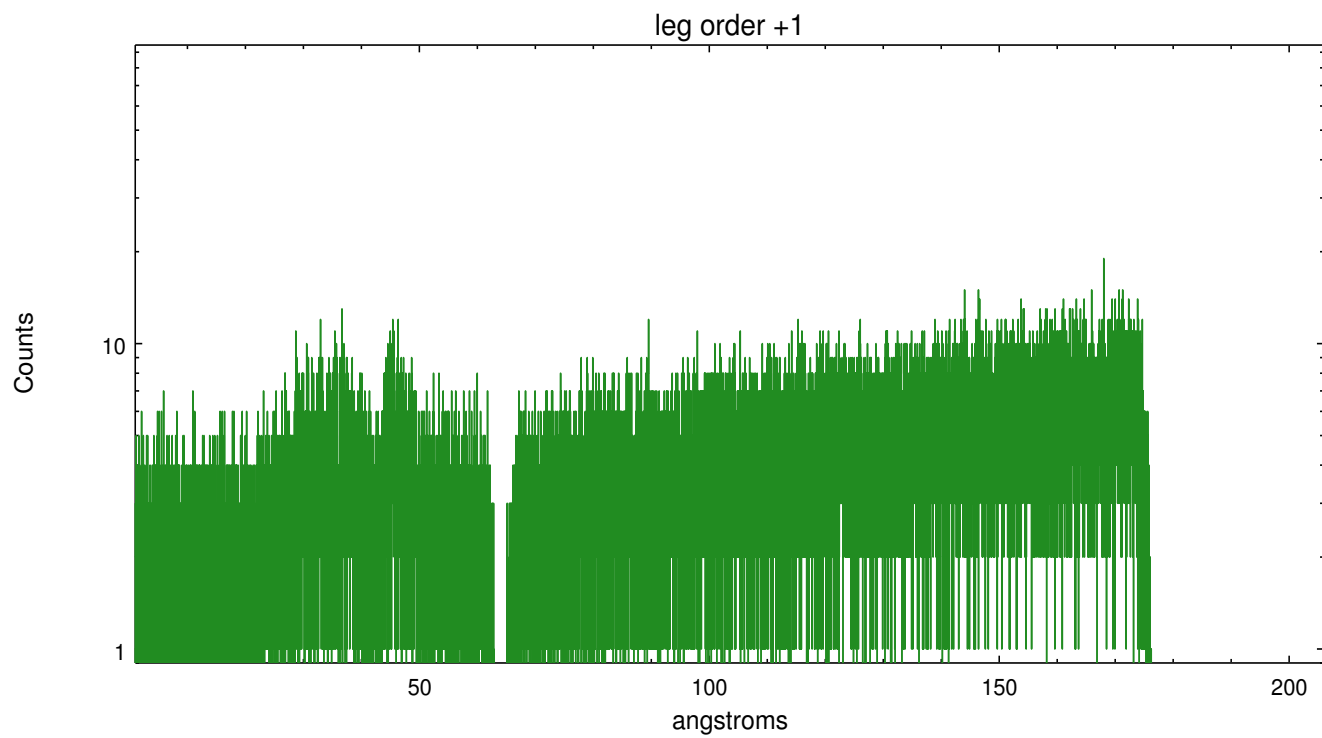
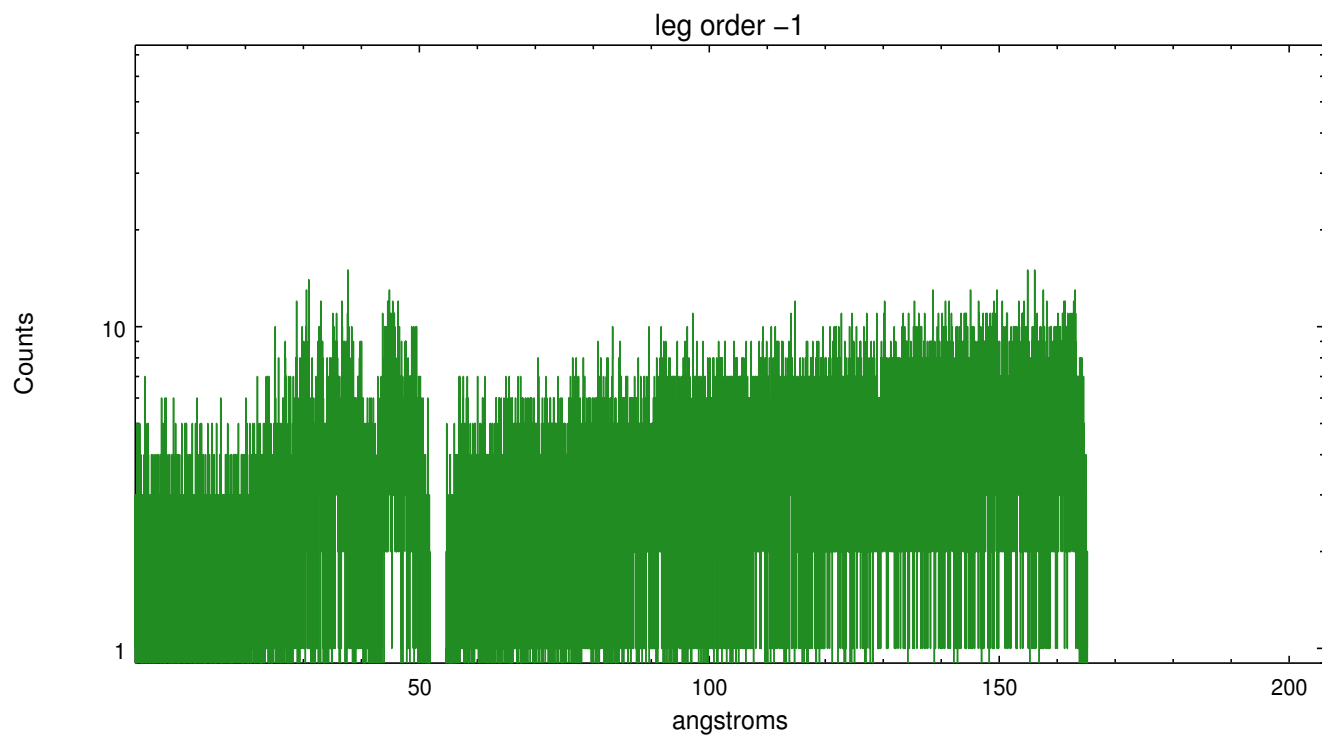


3 Gratings

3.1 LETG Arm



LETG Zero Order



A Summary

A.1 Status

V&V Scientist	Joy Nichols
V&V Date (YYYY-MM-DD)	2012.12.13
V&V Edition	1
V&V Disposition and Status	OK
V&V Charge Time	47.981

A.2 Comments

On day 356 at about 00:30, the OBA heater stuck in the 'on' position. This situation affected obsid 4901 and all subsequent observations to this point. The result of this anomaly could be a displacement of the target on the chip in the z direction. The displacement will be small because everything is still within spec, but the target may be spatially displaced, have a different point spread function, or trail across the chip.