

V&V Reference Report

L2 ASCDS Version : 8.4.5

Observation 3593 - L2 Version 3
Chandra X-Ray Center

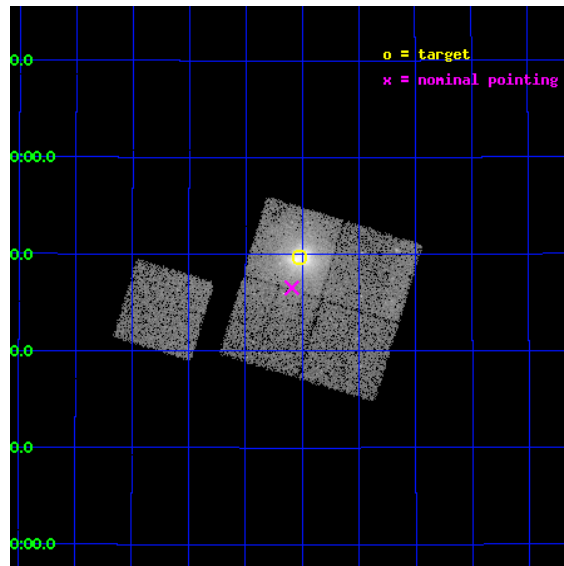
L2 Processing Date : Nov 2 2012

Contents

1	Front	2
2	OBI	3
2.1	OBI	3
2.1.1	Images	3
2.1.2	Bias	3
2.1.3	Parameters	4
2.1.4	Events	4
2.2	Compared Parameters	5
2.3	Aspect	6
2.4	Star Slots	9
2.4.1	Slot 3	9
2.4.2	Slot 4	10
2.4.3	Slot 5	11
2.4.4	Slot 6	12
2.4.5	Slot 7	13
2.5	FID Slots	14
2.5.1	Slot 0	14
2.5.2	Slot 1	15
2.5.3	Slot 2	16
A	Summary	17
A.1	Status	17
A.2	Comments	17

1 Front

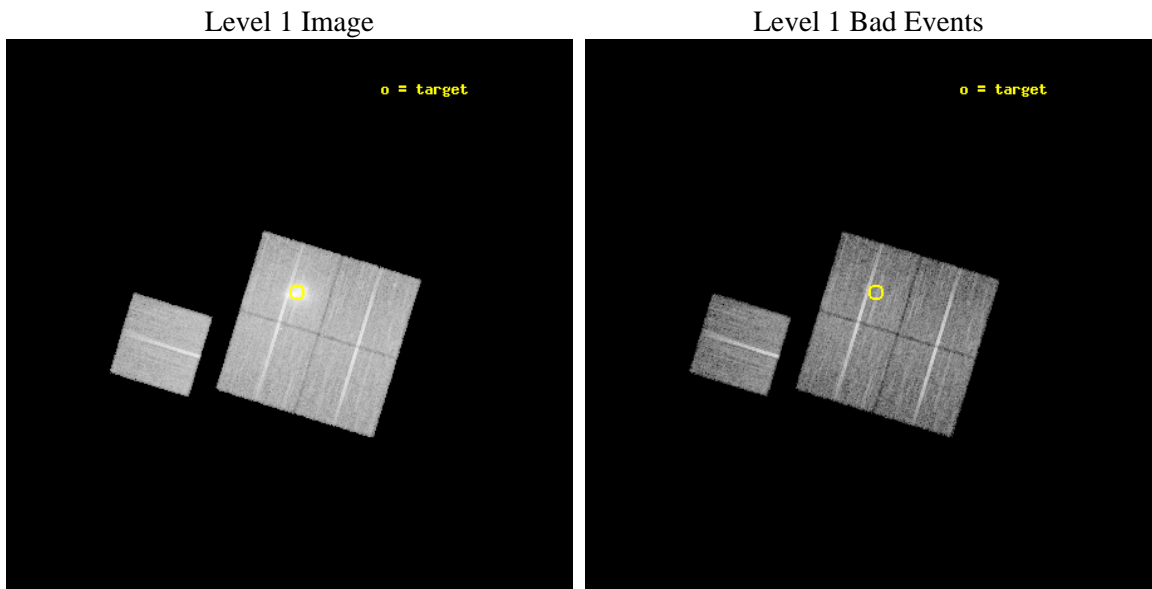
seq_num	800314	Sequence number
obs_id	3593	Observation id
title	X-RAY/SZ DETERMINATION OF COSMOLOGICAL PARAMETERS	Proposal title
observer	DR. LEON VANSPEYBROECK	Principal investigator
object	A1914	Source name
dtcycle	0	
cycle	P	events from which exps? Prim/Second/Both
ra_targ	216.505	Observer's specified target RA [deg]
dec_targ	37.828	Observer's specified target Dec [deg]
ra_nom	216.52270989786	Nominal RA [deg]
dec_nom	37.775515931389	Nominal Dec [deg]
roll_nom	287.03662792865	Nominal Roll [deg]
revision	3	Processing version of data
ontime	19120.759002984	Sum of GTIs [s]
livetime	18870.932210112	Livetime [s]
ontime0	19117.618012846	Sum of GTIs [s]
ontime1	19117.618042767	Sum of GTIs [s]
ontime2	19123.8999632	Sum of GTIs [s]
ontime3	19120.759002984	Sum of GTIs [s]
ontime6	19120.75899297	Sum of GTIs [s]
l2events	87015	Number of level 2 events



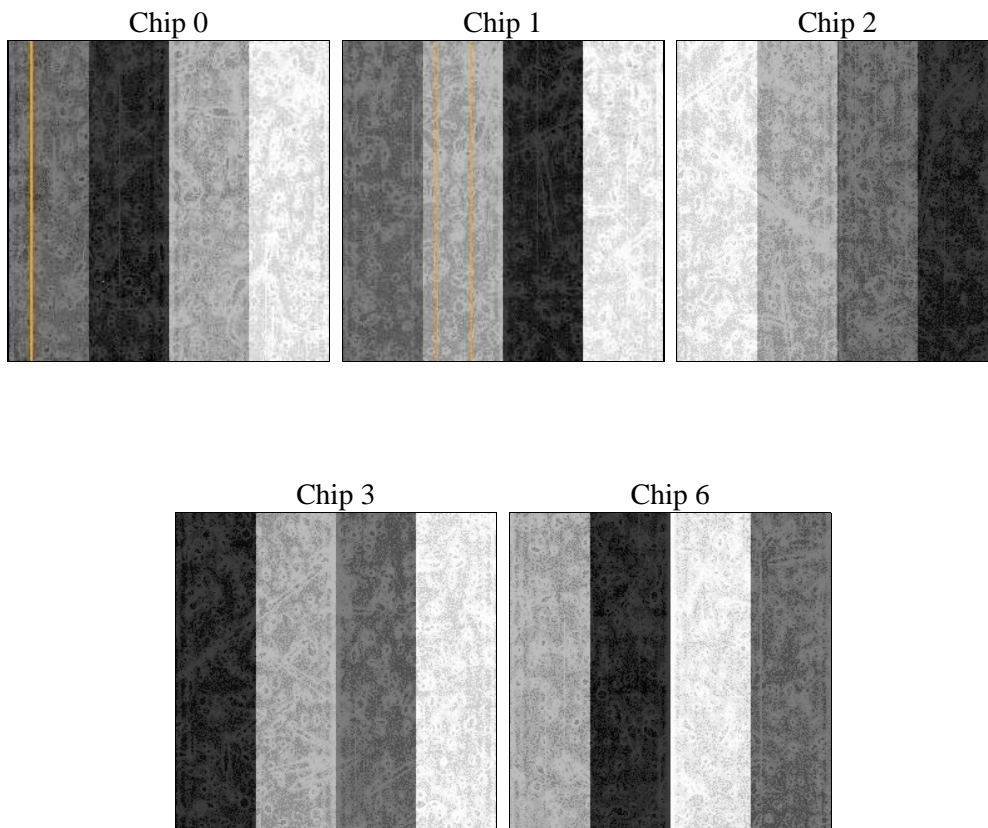
2 OBI

2.1 OBI

2.1.1 Images



2.1.2 Bias



2.1.3 Parameters

obi_num	0	Obi number	sched_exp_time	19000.000000	[s] Scheduled observation exposure time
ascdsver	8.4.5	Processing system revision	ontime	19120.759002984	Sum of GTIs [s]
caldbver	4.5.2	 	ontime0	19117.618012846	Sum of GTIs [s]
date	2012-11-02T17:09:41	Date and time of file creation	ontime1	19117.618042767	Sum of GTIs [s]
revision	3	Processing version of data	ontime2	19123.8999632	Sum of GTIs [s]
			ontime3	19120.759002984	Sum of GTIs [s]
			ontime6	19120.75899297	Sum of GTIs [s]
			l1events	539382	Number of level 1 events

2.1.4 Events

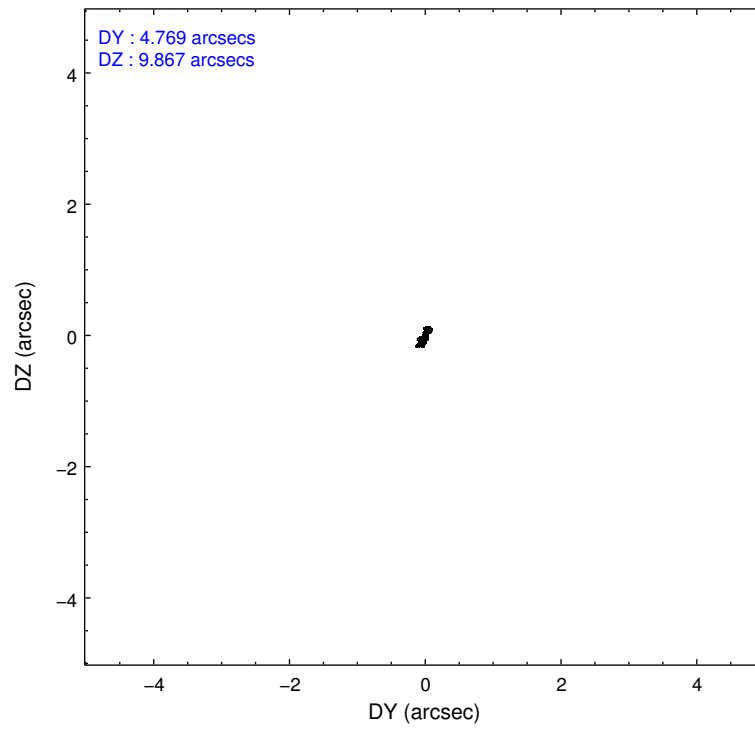
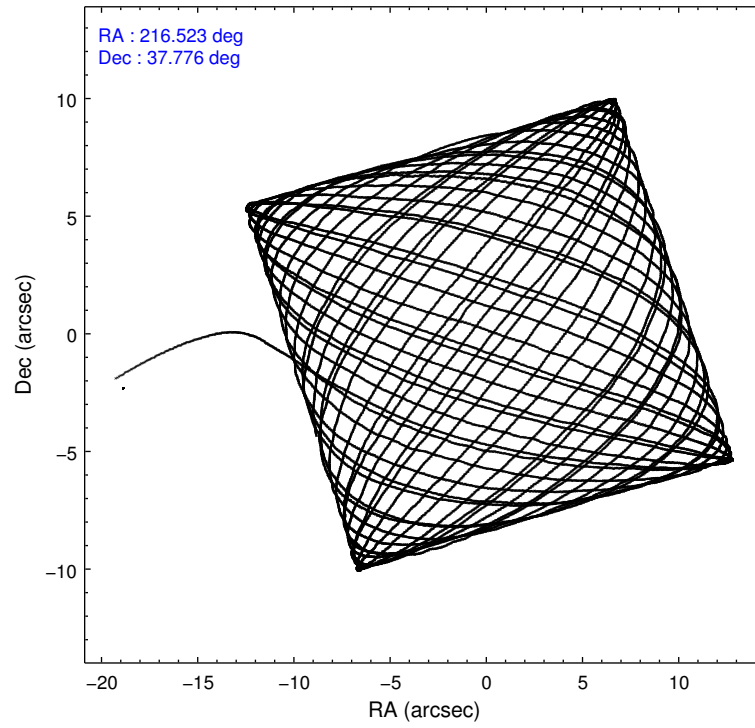
	ccd 0	ccd 1	ccd 2	ccd 3	ccd 6
level 1 events	92066	95098	103589	147757	100872
rejected events	82121	83183	92607	93444	90771
rejected %	89%	87%	89%	63%	89%

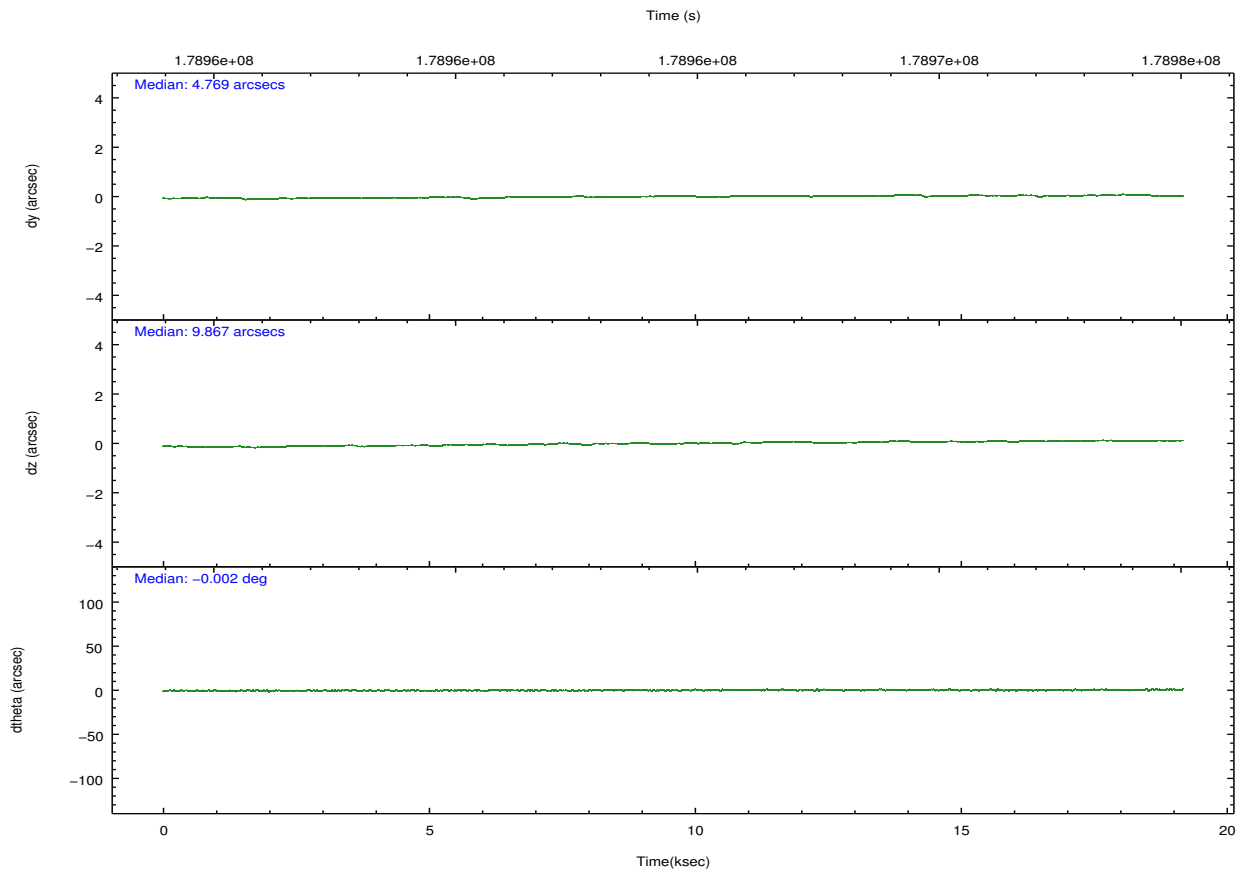
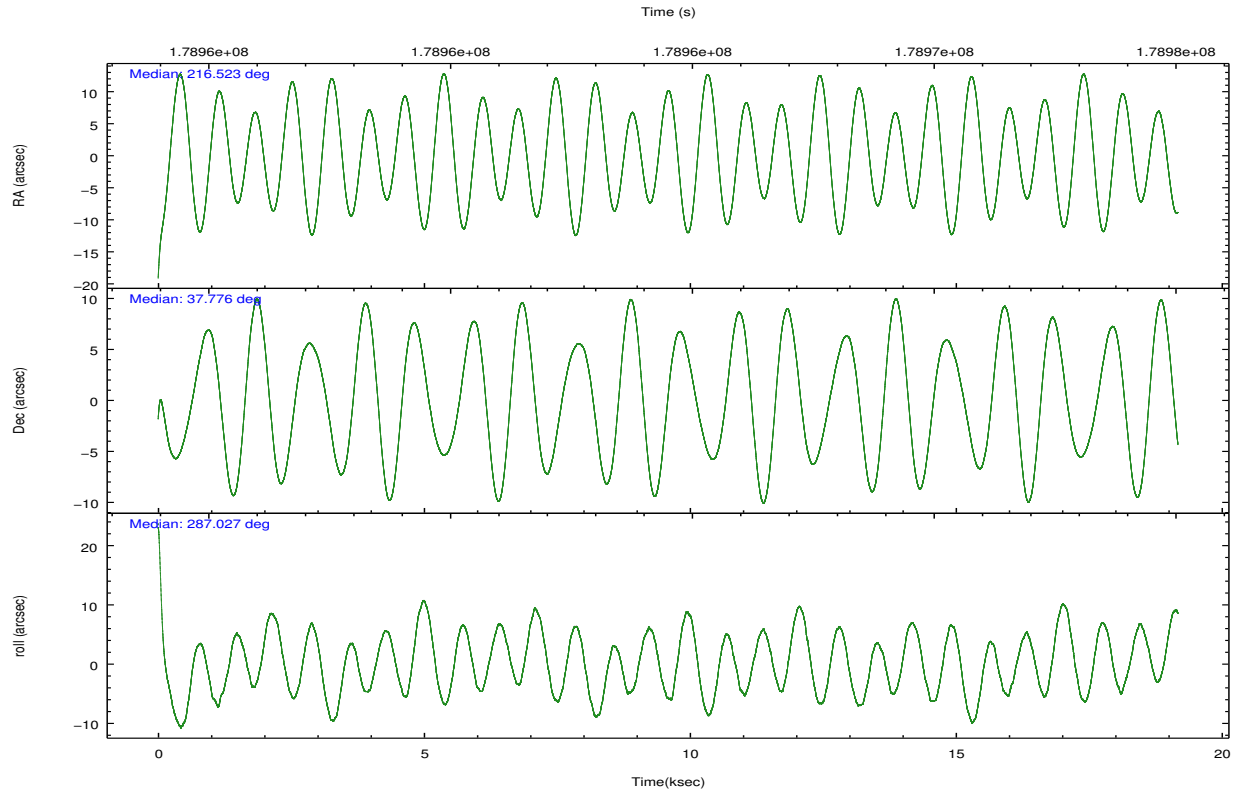
	ccd 0	ccd 1	ccd 2	ccd 3	ccd 6
grade 0 events	3559	4676	4572	40034	3518
	3%	4%	4%	27%	3%
grade 1 events	37	38	51	234	39
	0%	0%	0%	0%	0%
grade 2 events	2249	2454	2323	6337	2164
	2%	2%	2%	4%	2%
grade 3 events	1153	1314	1138	2429	1185
	1%	1%	1%	1%	1%
grade 4 events	1109	1278	1087	2521	1170
	1%	1%	1%	1%	1%
grade 5 events	3450	3832	3337	4068	3861
	3%	4%	3%	2%	3%
grade 6 events	1878	2195	1862	3001	2065
	2%	2%	1%	2%	2%
grade 7 events	78631	79311	89219	89133	86870
	85%	83%	86%	60%	86%

2.2 Compared Parameters

Parameter	Planned	Actual	Parameter	Planned	Actual
Instrument	ACIS	ACIS	Obspar format version number	7	7
Detector	ACIS-01236	ACIS-01236	Obspar file type	PREDICTED	ACTUAL
Grating	NONE	NONE	Obspar update status	NONE	UPDATED
Data mode	VFAINT	VFAINT	Number of optional ACIS chips dropped	0	0
Observation mode	POINTING	POINTING	On-chip summing requested	N	N
[deg] Pointing RA	216.497266	216.5227098978633	Subarray requested	NONE	NONE
[deg] Pointing Dec	37.794110	37.77551593138873	Alternating exposures requested	N	N
[deg] Pointing Roll	286.843524	287.0366279286484	[s] Primary exposure time	0.000000	3.1
[mm] SIM focus pos	-0.782348	-0.7809083437167272			
[mm] SIM defocus	0	0.001439871863259334			
[mm] SIM translation stage pos	-225.840463	-225.8433433320239			
[mm] SIM translation stage offset	-7.752	-7.749109670905796			
[s] Observation start time (MET)	178955078.184000	178954106.85123			
Observation start date	2003-09-03T05:43:34	2003-09-03T05:28:26			
[s] Observation end time (MET)	178974078.184000	178974824.15212			
Observation end date	2003-09-03T11:00:14	2003-09-03T11:13:44			
Read mode	TIMED	TIMED			

2.3 Aspect



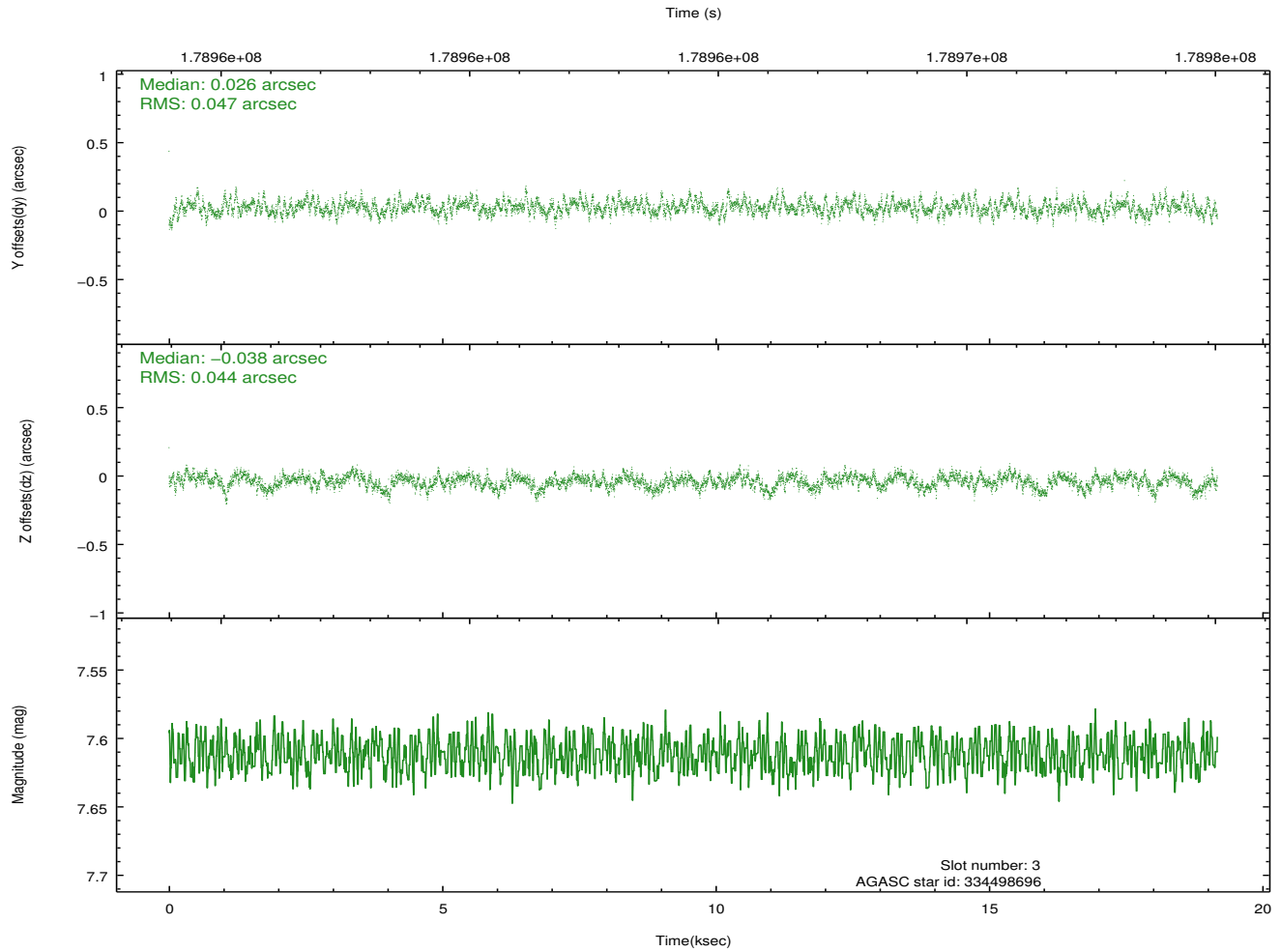
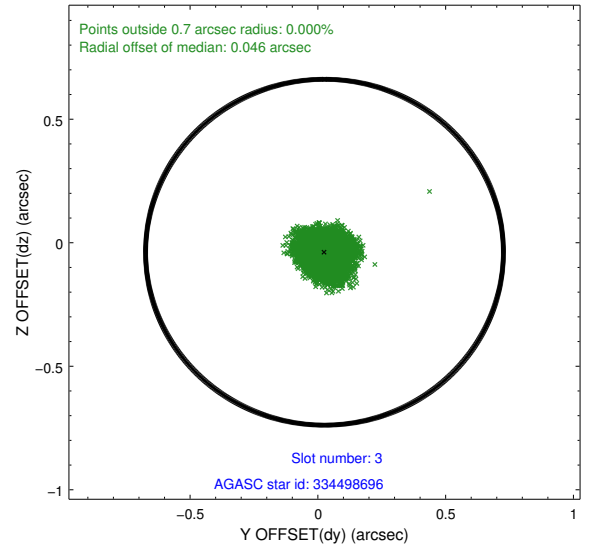
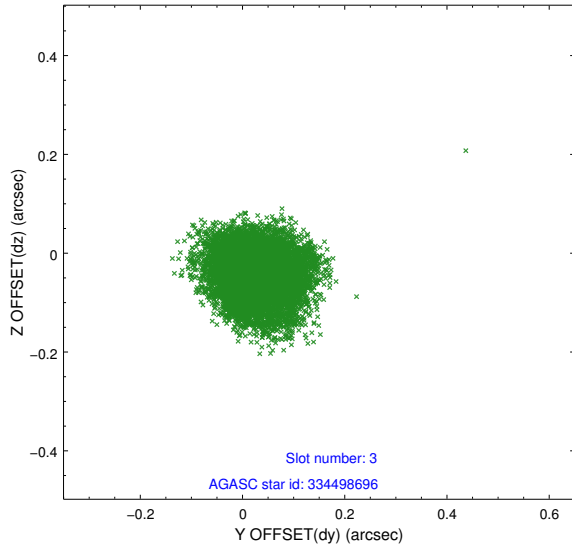


Slot Statistics

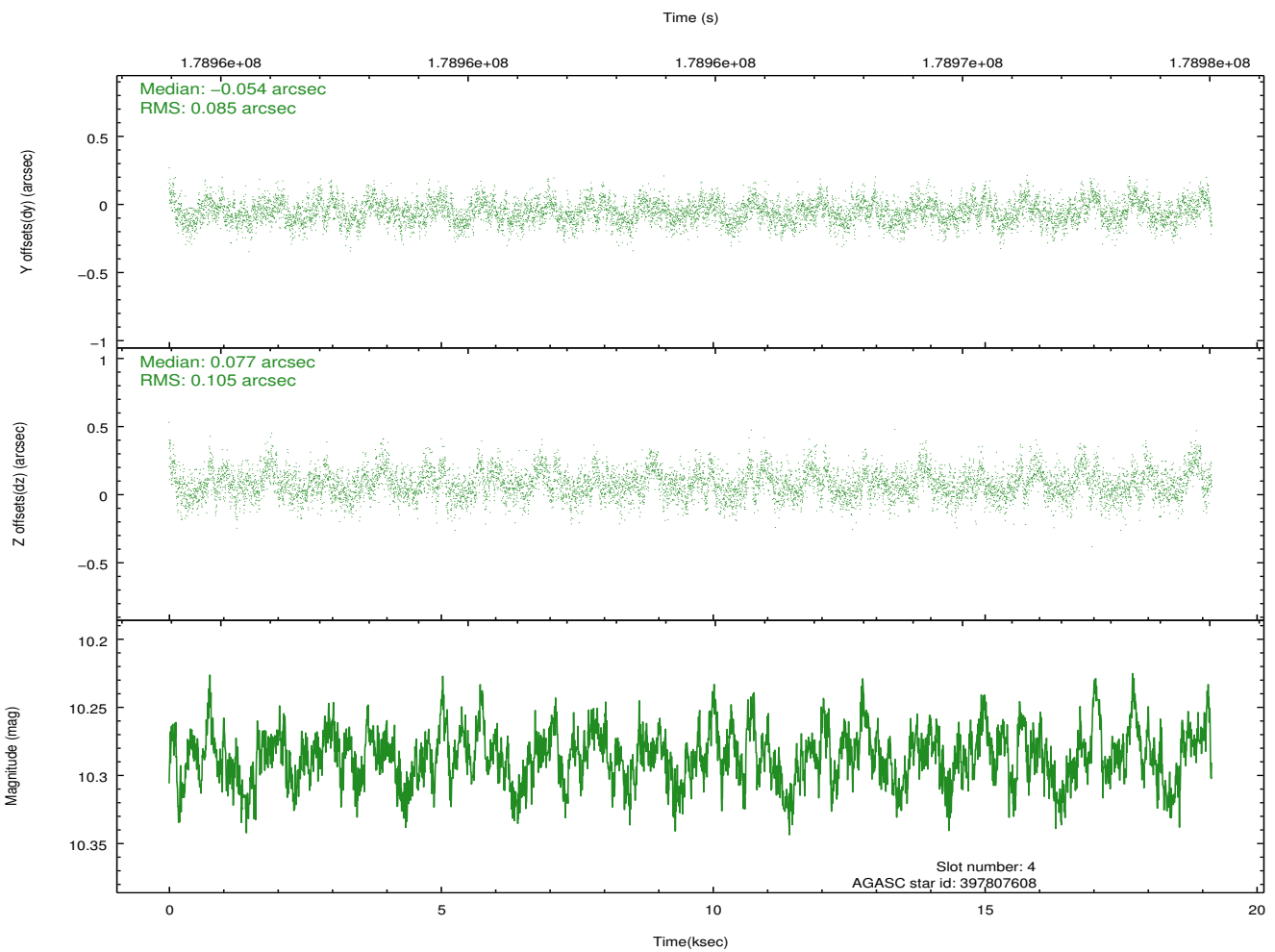
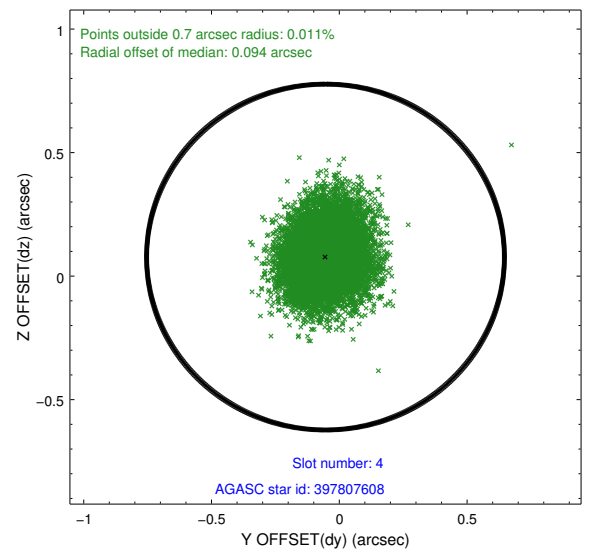
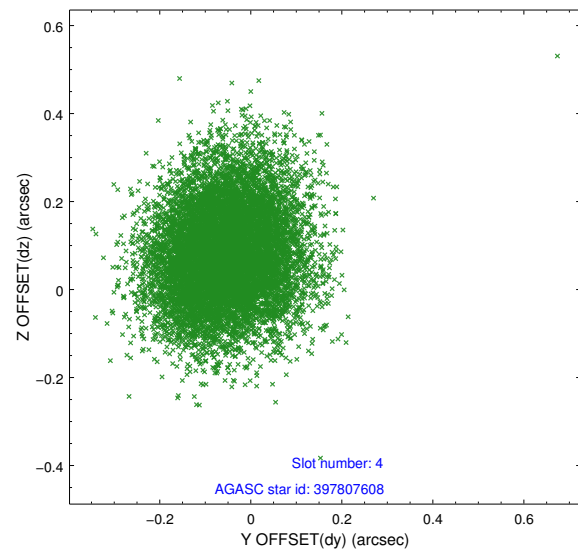
slot	status	id	mag	n_pts	med_dy	med_dz	dr1	dr2	ra	dec	mean_y	mean_z
0	FID	ACIS-I-1	7.22	4675	0.080	-0.070	0.007	0.013	0.000000	0.000000	934.91	-992.48
1	FID	ACIS-I-5	7.22	4675	-0.238	0.068	0.007	0.011	0.000000	0.000000	-1813.39	905.02
2	FID	ACIS-I-6	7.25	4674	0.067	0.072	0.007	0.011	0.000000	0.000000	400.23	1549.76
3	GUIDE	334498696	7.61	9347	0.026	-0.038	0.069	0.112	215.863981	37.206551	1493.04	-2348.88
4	GUIDE	397807608	10.29	9343	-0.054	0.077	0.142	0.235	215.666147	37.953309	-1241.39	-2089.06
5	GUIDE	397808560	9.87	9344	0.072	0.001	0.113	0.184	216.564463	37.977903	-577.77	373.99
6	GUIDE	397940208	9.75	9345	-0.022	-0.090	0.097	0.156	217.129334	38.261499	-1098.66	2199.36
7	GUIDE	397943760	7.94	9350	-0.023	0.055	0.065	0.107	217.039857	37.556695	1262.44	1236.49

2.4 Star Slots

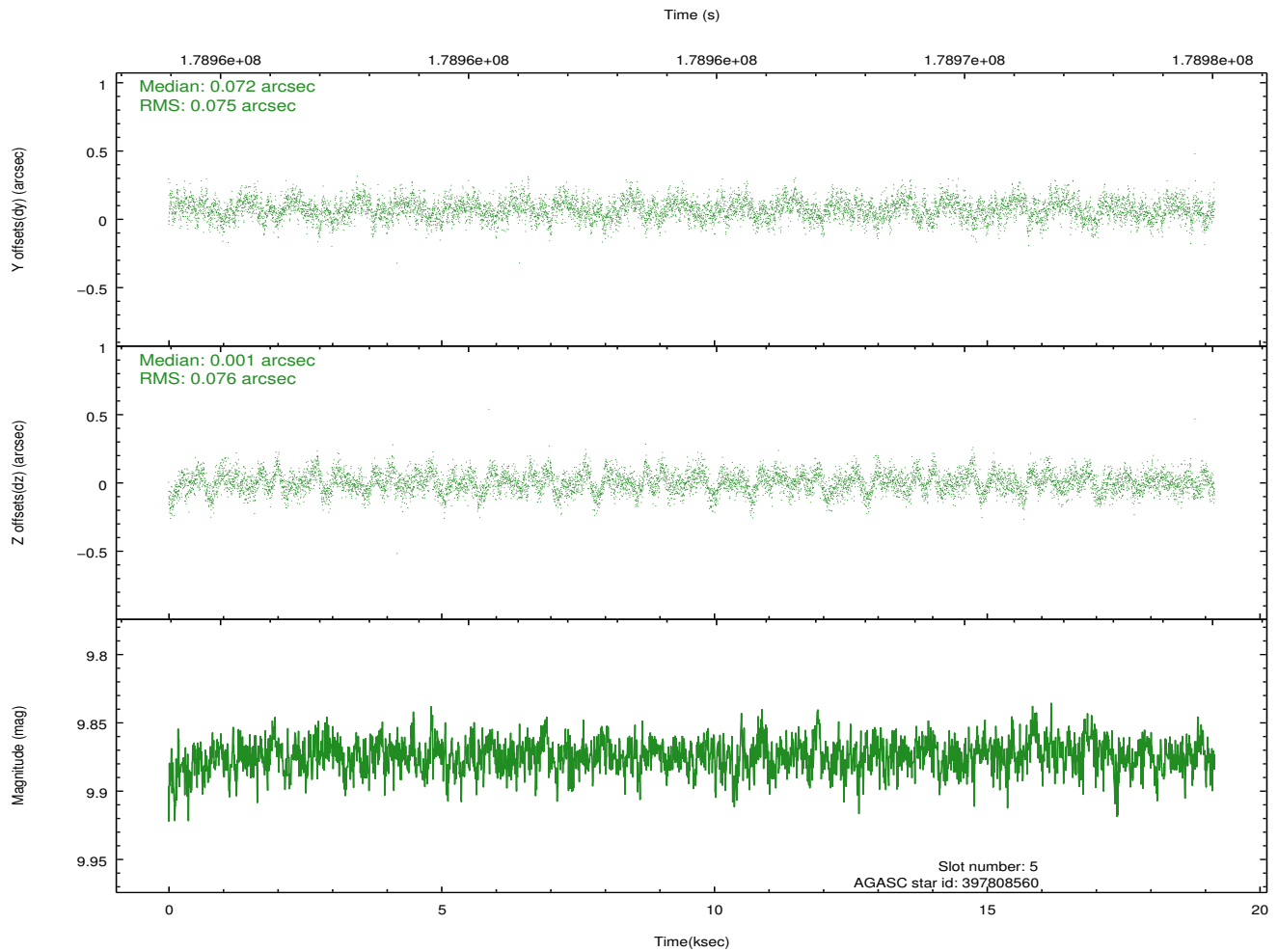
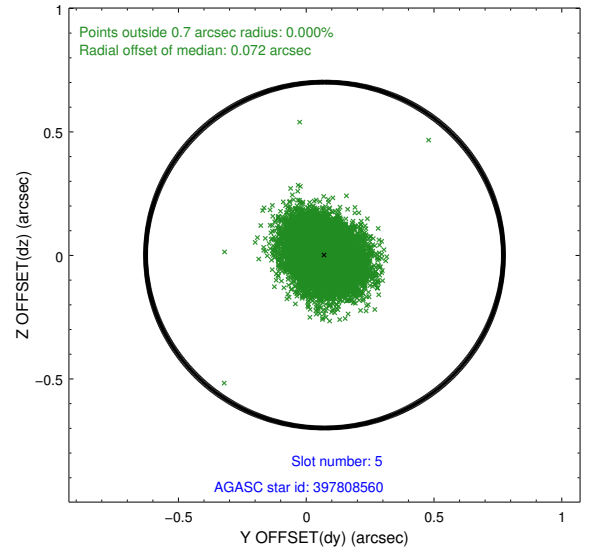
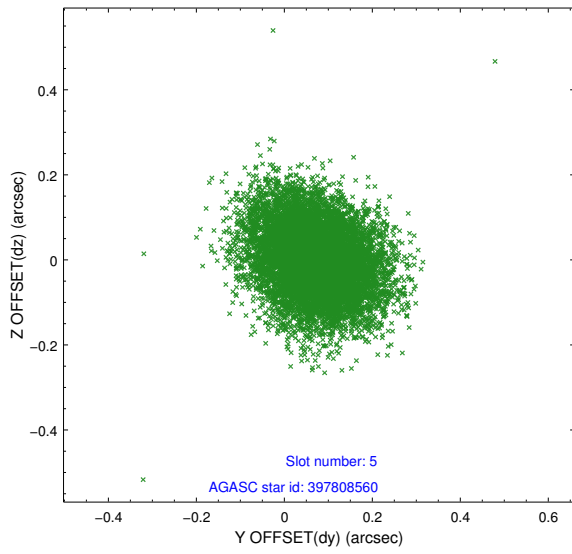
2.4.1 Slot 3



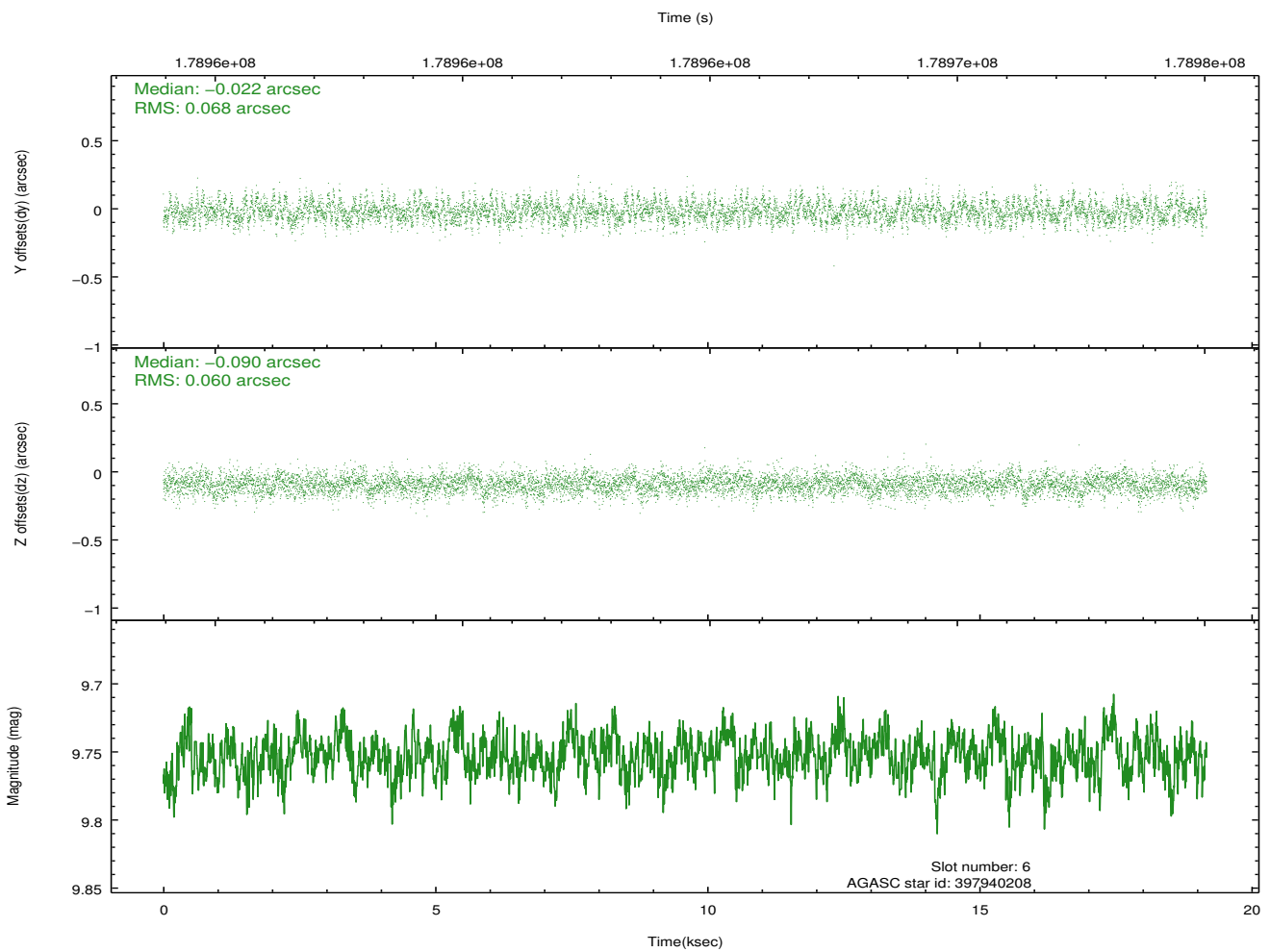
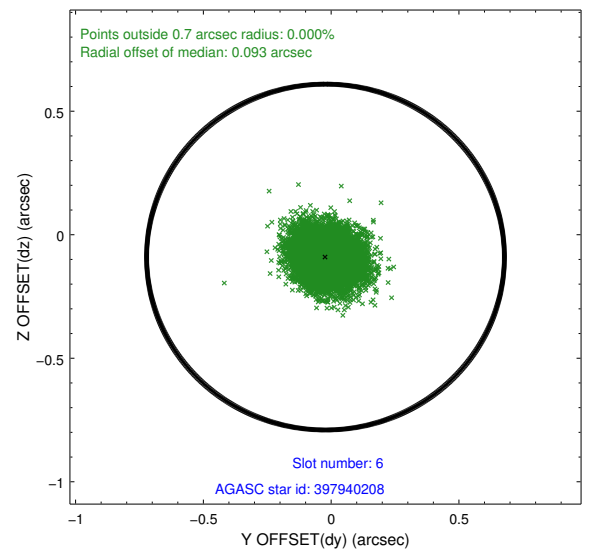
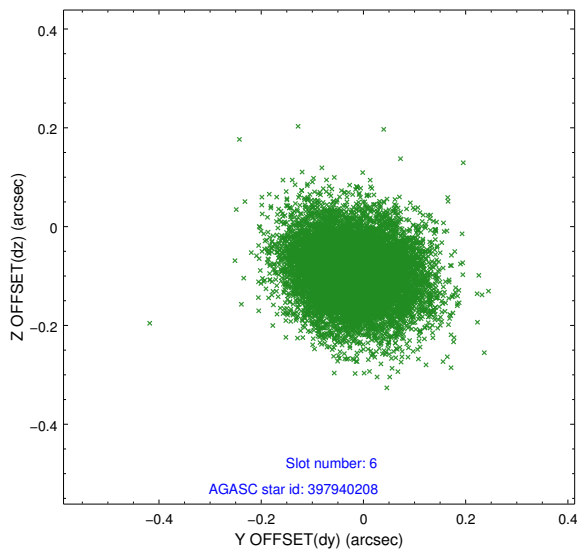
2.4.2 Slot 4



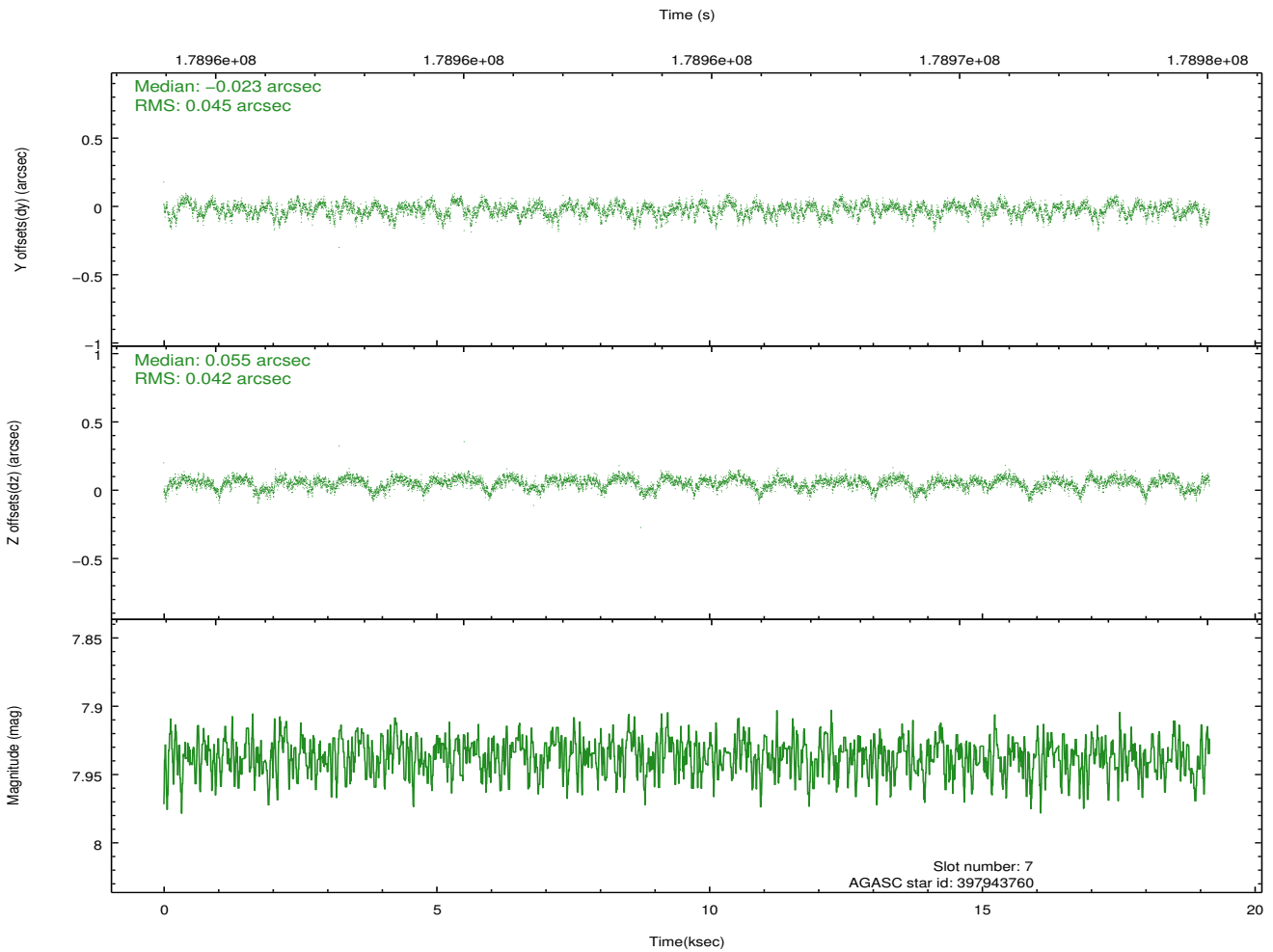
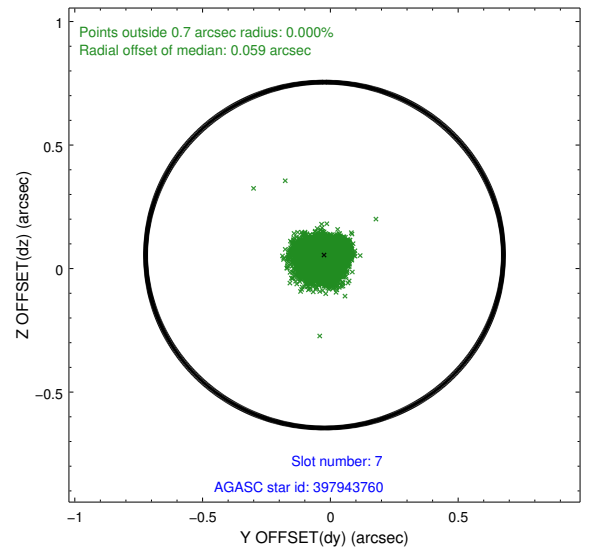
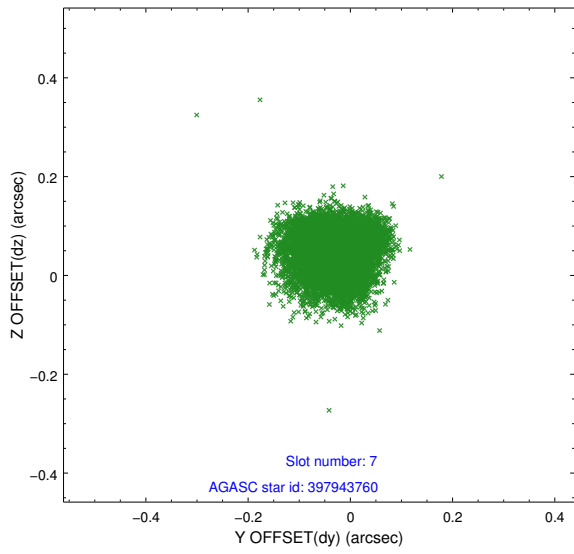
2.4.3 Slot 5



2.4.4 Slot 6

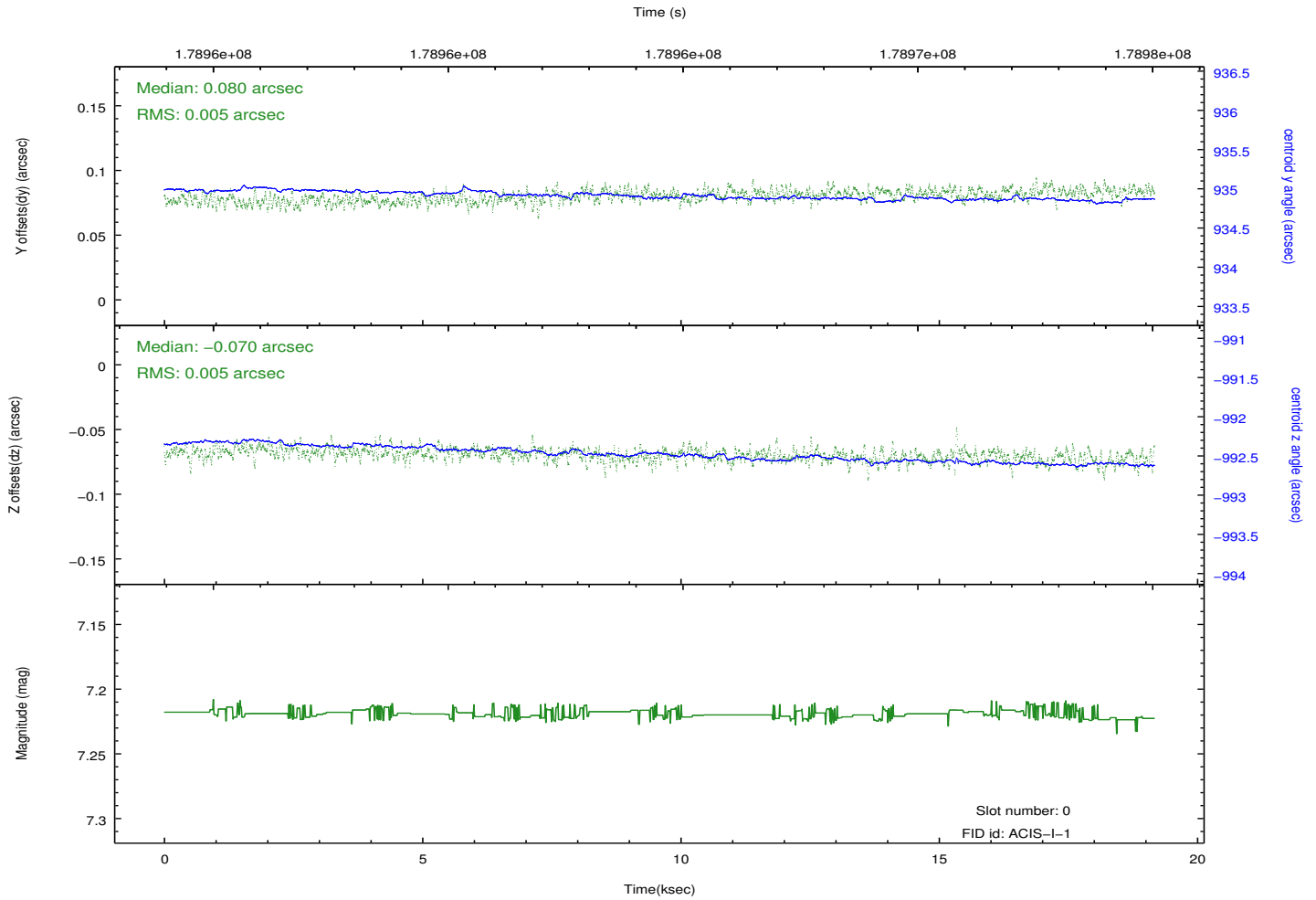
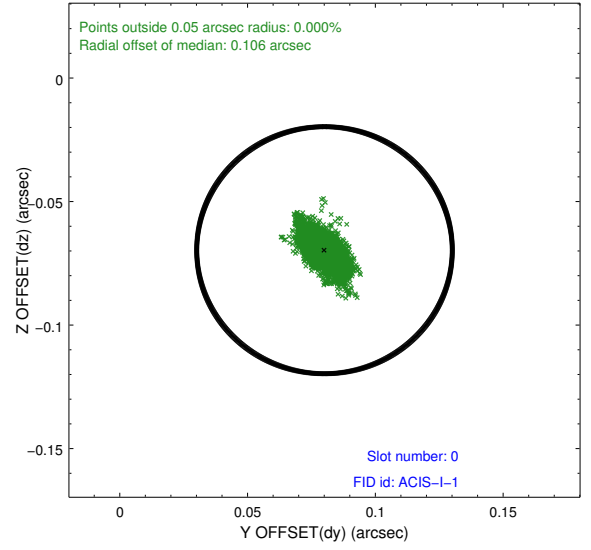
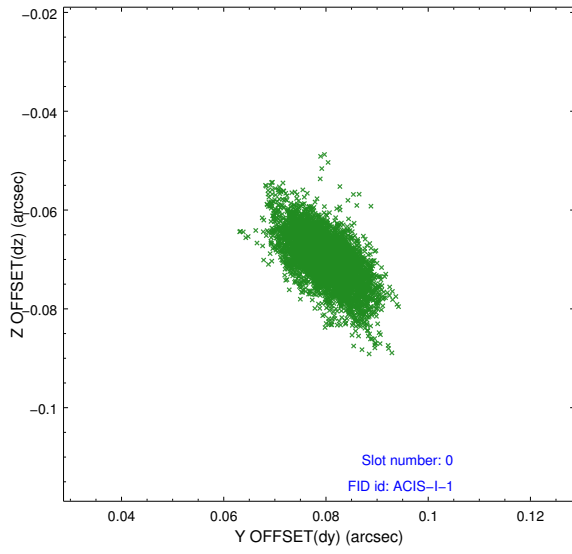


2.4.5 Slot 7

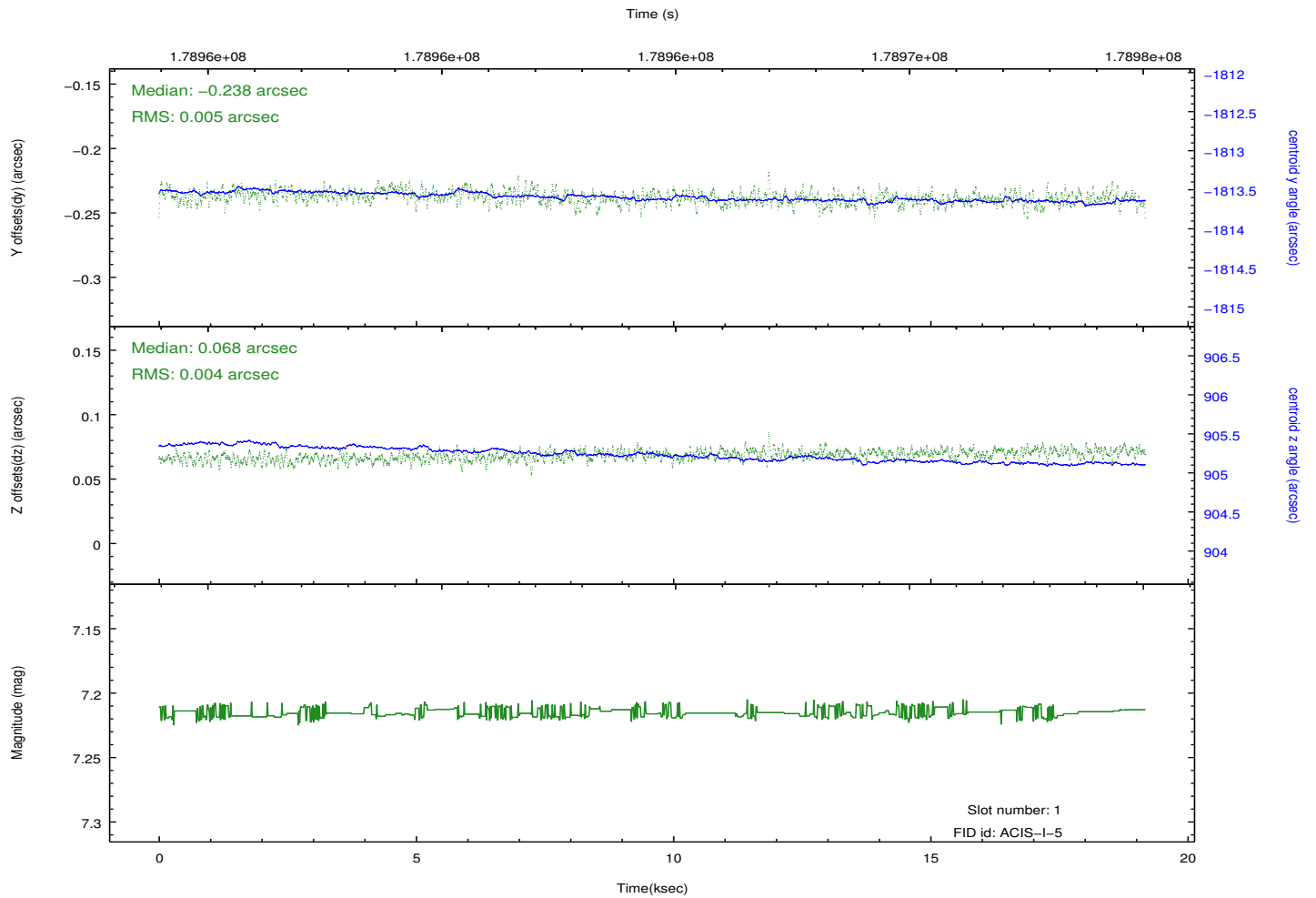
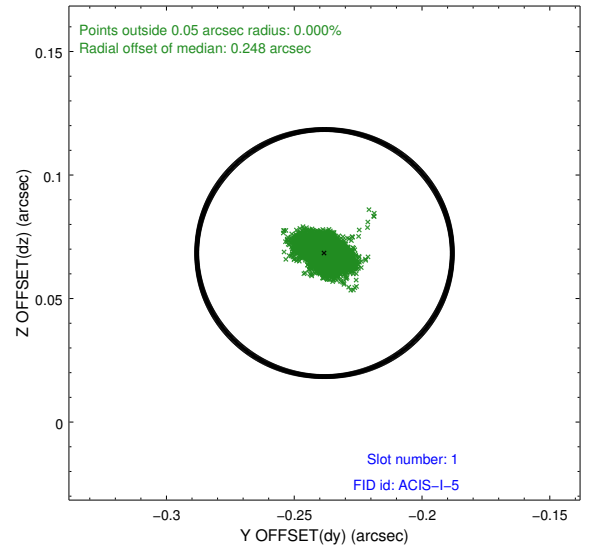
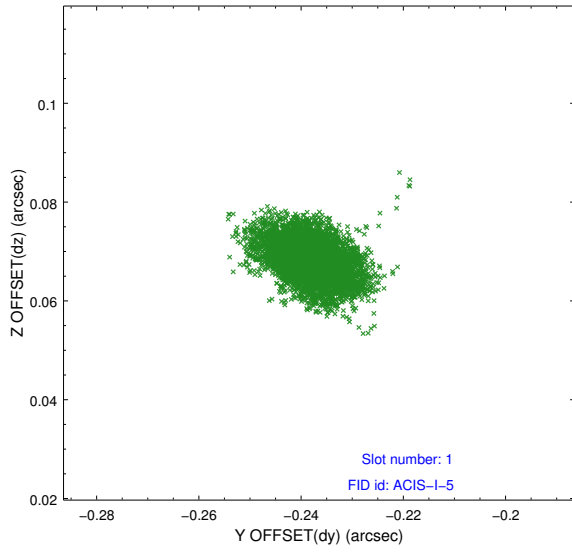


2.5 FID Slots

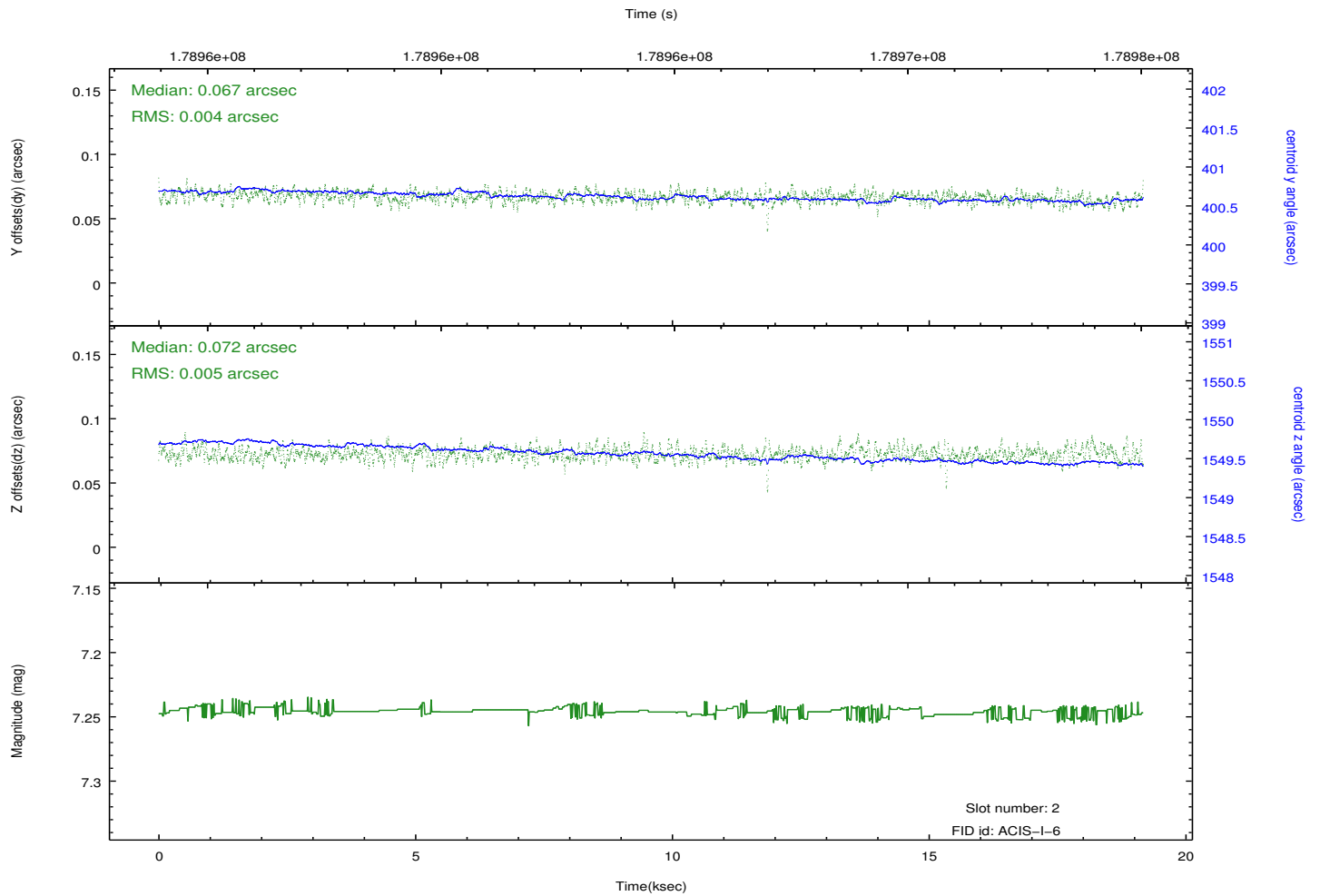
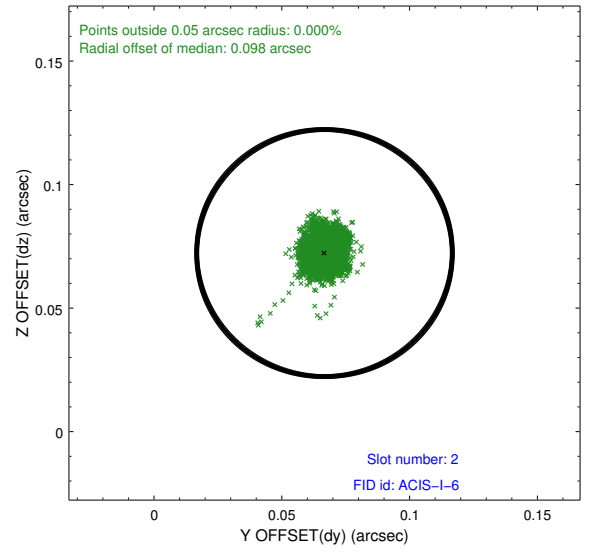
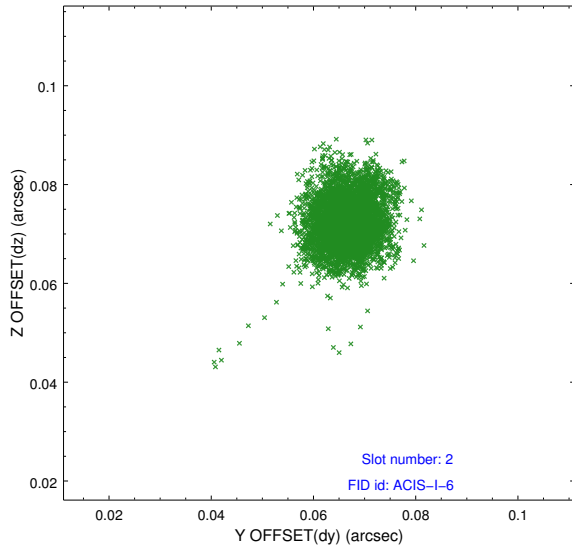
2.5.1 Slot 0



2.5.2 Slot 1



2.5.3 Slot 2



A Summary

A.1 Status

V&V Scientist	Jen Lauer
V&V Date (YYYY-MM-DD)	2012.11.28
V&V Edition	1
V&V Disposition and Status	OK
V&V Charge Time	19.123

A.2 Comments