

V&V Reference Report

L2 ASCDS Version : 8.4.5

Observation 363 - L2 Version 4
Chandra X-Ray Center

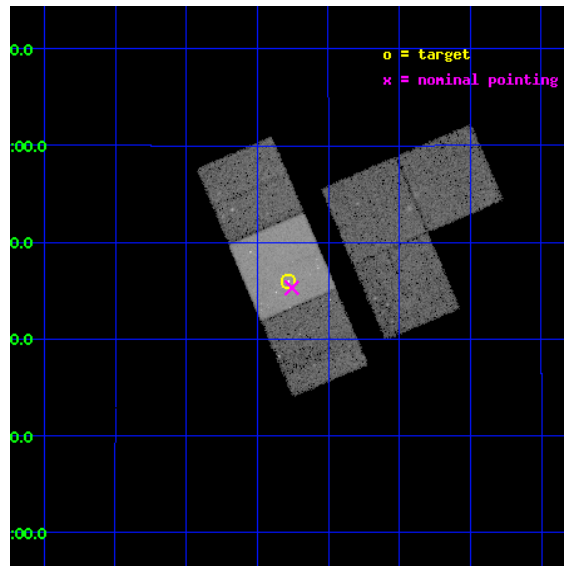
L2 Processing Date : Aug 28 2012

Contents

1	Front	2
2	OBI	3
2.1	OBI	3
2.1.1	Images	3
2.1.2	Bias	3
2.1.3	Parameters	4
2.1.4	Events	4
2.2	Compared Parameters	5
2.3	Aspect	6
2.4	Star Slots	9
2.4.1	Slot 3	9
2.4.2	Slot 4	10
2.4.3	Slot 5	11
2.4.4	Slot 6	12
2.4.5	Slot 7	13
2.5	FID Slots	14
2.5.1	Slot 0	14
2.5.2	Slot 1	15
2.5.3	Slot 2	16
A	Summary	17
A.1	Status	17
A.2	Comments	17

1 Front

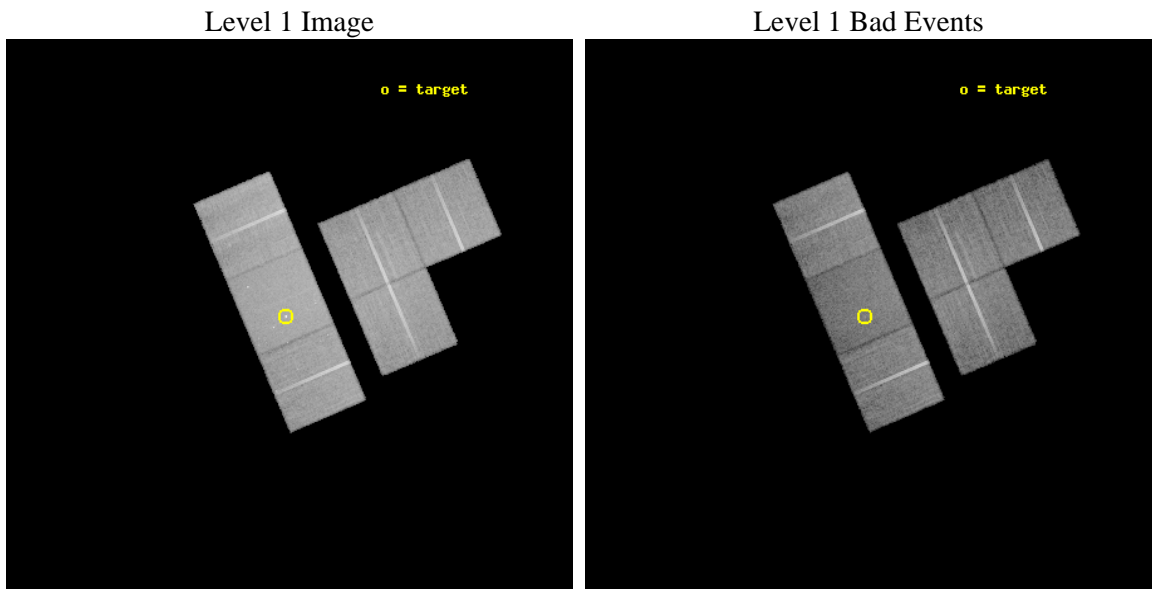
seq_num	700035	Sequence number
obs_id	363	Observation id
title	ACIS STUDY OF GRAVITATIONALLY LENSED QUASARS	Proposal title
observer	Professor Gordon Garmire	Principal investigator
object	PG 1115+080	Source name
dtycycle	0	
cycle	P	events from which exps? Prim/Second/Both
ra_targ	169.570833	Observer's specified target RA [deg]
dec_targ	7.766028	Observer's specified target Dec [deg]
ra_nom	169.56412340468	Nominal RA [deg]
dec_nom	7.7551196193489	Nominal Dec [deg]
roll_nom	246.86214703389	Nominal Roll [deg]
revision	4	Processing version of data
ontime	26828.800024971	Sum of GTIs [s]
livetime	26489.077604691	Livetime [s]
ontime1	26825.559044808	Sum of GTIs [s]
ontime2	26828.800024971	Sum of GTIs [s]
ontime3	26828.800024971	Sum of GTIs [s]
ontime6	26828.800024971	Sum of GTIs [s]
ontime7	26828.800024971	Sum of GTIs [s]
ontime8	26828.800024971	Sum of GTIs [s]
l2events	179236	Number of level 2 events



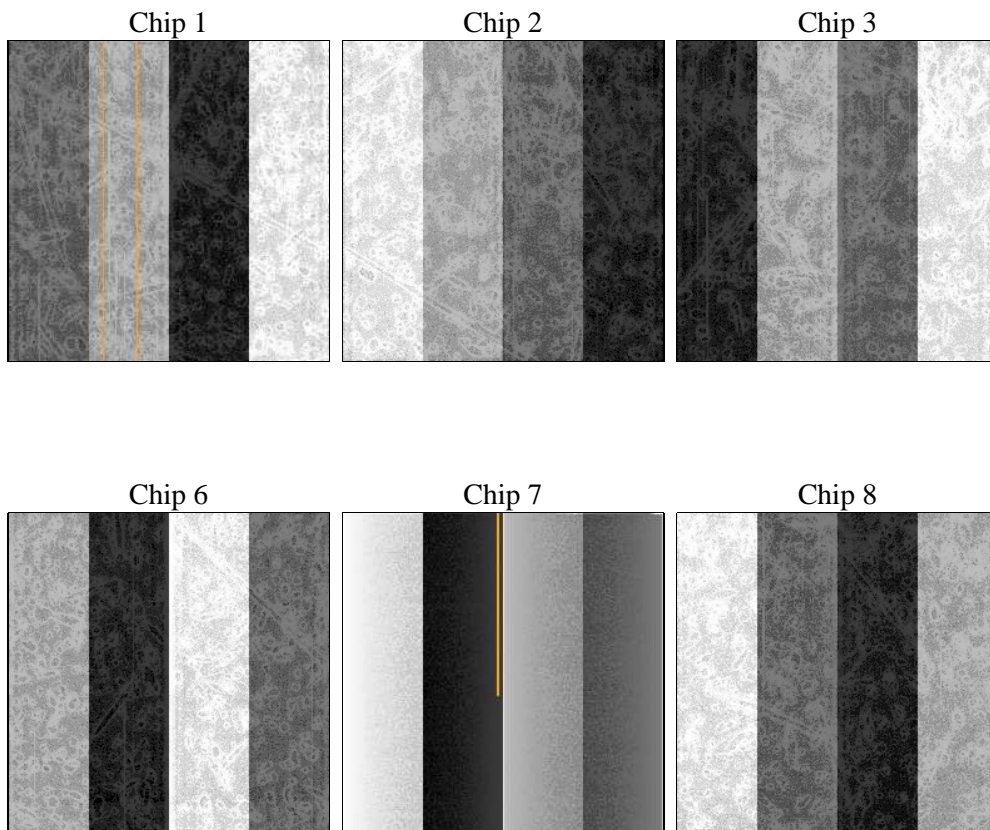
2 OBI

2.1 OBI

2.1.1 Images



2.1.2 Bias



2.1.3 Parameters

obi_num	0	Obi number	sched_exp_time	27000.000000	[s] Scheduled observation exposure time
ascdsver	8.4.5	Processing system revision	ontime	26828.800024971	Sum of GTIs [s]
caldbver	4.5.1.1	 	ontime1	26825.559044808	Sum of GTIs [s]
date	2012-08-28T19:08:14	Date and time of file creation	ontime2	26828.800024971	Sum of GTIs [s]
revision	4	Processing version of data	ontime3	26828.800024971	Sum of GTIs [s]
			ontime6	26828.800024971	Sum of GTIs [s]
			ontime7	26828.800024971	Sum of GTIs [s]
			ontime8	26828.800024971	Sum of GTIs [s]
			l1events	1145719	Number of level 1 events

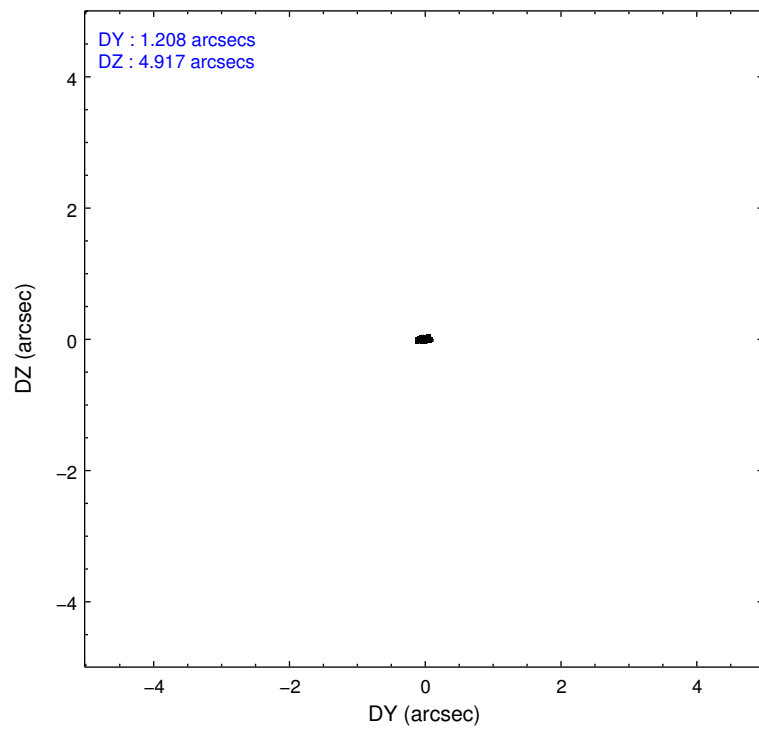
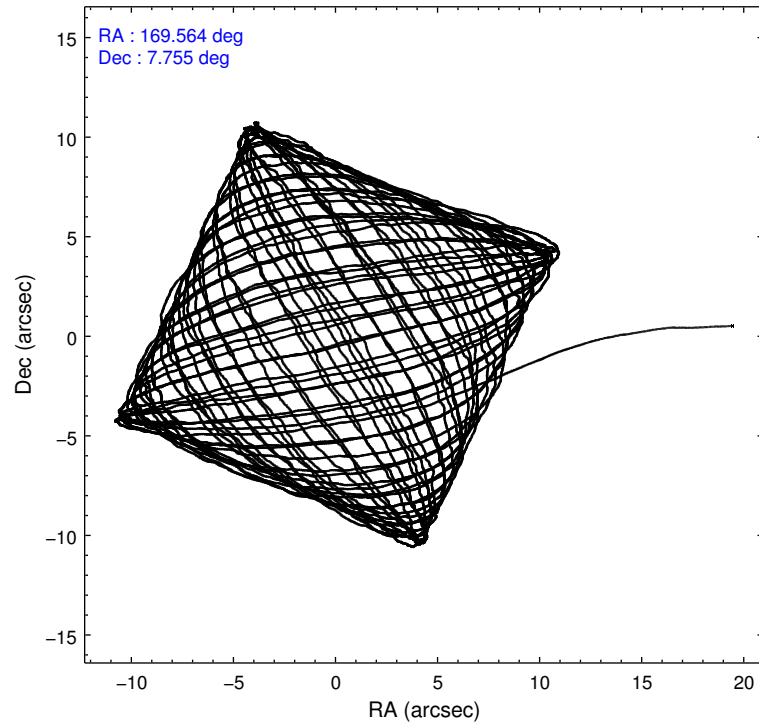
2.1.4 Events

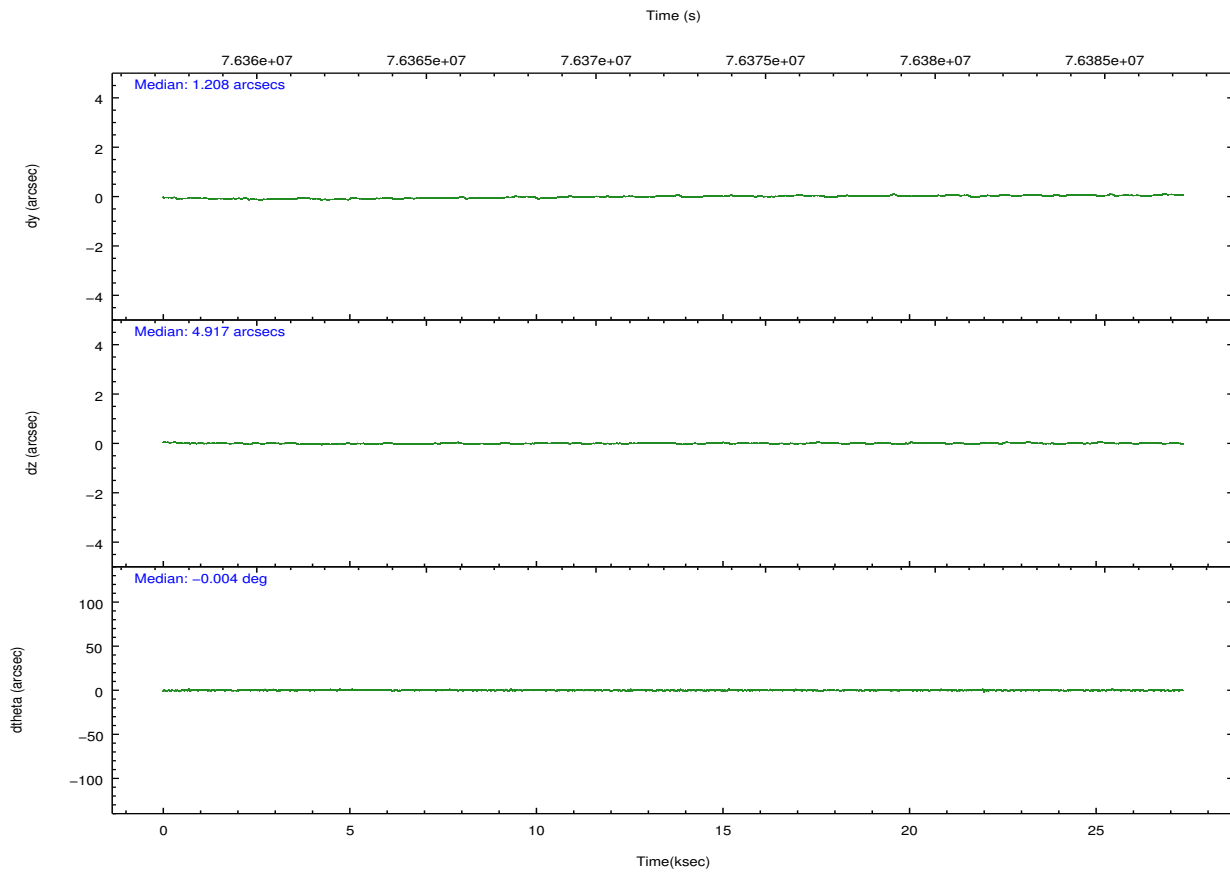
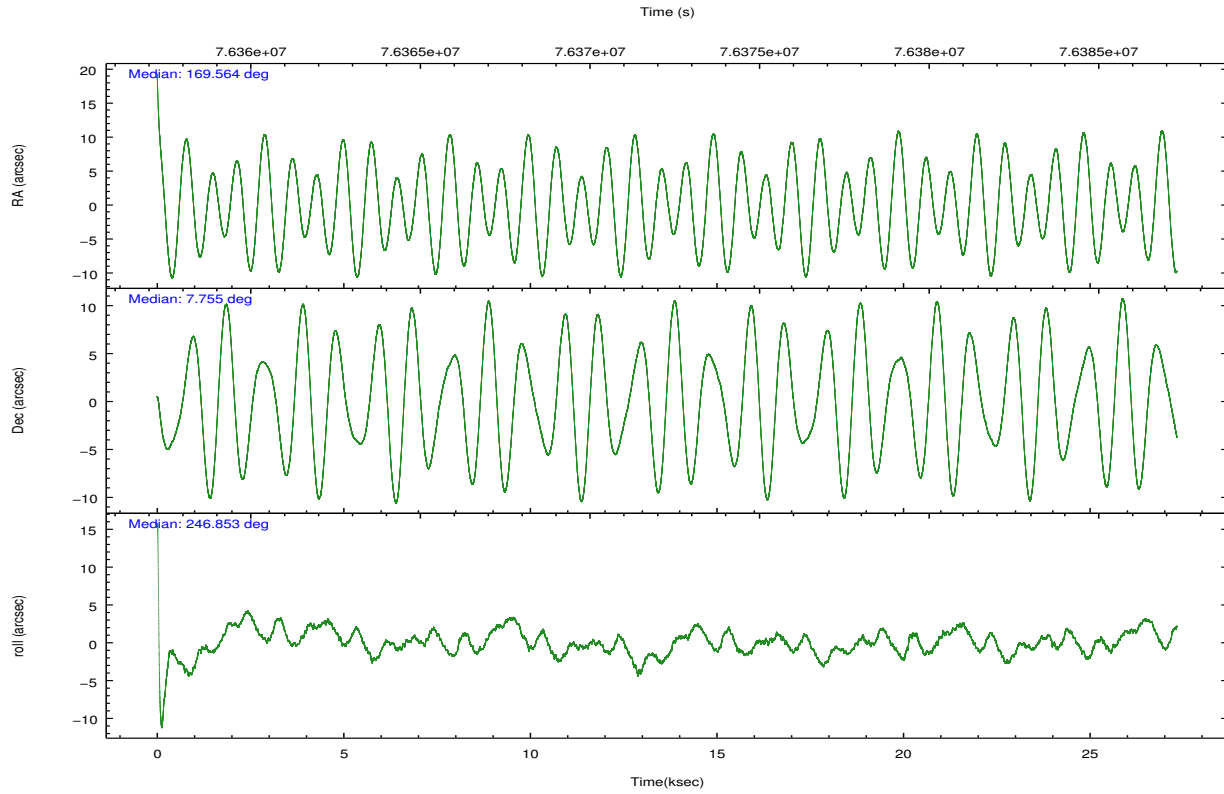
	ccd 1	ccd 2	ccd 3	ccd 6	ccd 7	ccd 8		ccd 1	ccd 2	ccd 3	ccd 6	ccd 7	ccd 8
level 1 events	171214	176689	179181	180702	215261	222672	grade 0 events	8412	8408	8297	8351	9806	13200
rejected events	150198	157160	160048	160275	122004	180697		4%	4%	4%	4%	4%	5%
rejected %	87%	88%	89%	88%	56%	81%	grade 1 events	97	66	80	74	219	110
								0%	0%	0%	0%	0%	0%
							grade 2 events	4160	3914	3644	3882	18571	9161
								2%	2%	2%	2%	8%	4%
							grade 3 events	2171	1921	1896	2089	8697	4471
								1%	1%	1%	1%	4%	2%
							grade 4 events	2221	1891	1857	2043	8720	4043
								1%	1%	1%	1%	4%	1%
							grade 5 events	6316	5303	6204	6820	20477	8452
								3%	3%	3%	3%	9%	3%
							grade 6 events	4060	3396	3444	4065	47487	11106
								2%	1%	1%	2%	22%	4%
							grade 7 events	143777	151790	153759	153378	101284	172129
								83%	85%	85%	84%	47%	77%

2.2 Compared Parameters

Parameter	Planned	Actual	Parameter	Planned	Actual
Instrument	ACIS	ACIS	Obspar format version number	7	7
Detector	ACIS-123678	ACIS-123678	Obspar file type	PREDICTED	ACTUAL
Grating	NONE	NONE	Obspar update status	NONE	UPDATED
Data mode	FAINT	FAINT	Number of optional ACIS chips dropped	0	0
Observation mode	POINTING	POINTING	On-chip summing requested	N	N
[deg] Pointing RA	169.560696	169.5641234046798	Subarray requested	NONE	NONE
[deg] Pointing Dec	7.782324	7.7551196193489	Alternating exposures requested	N	N
[deg] Pointing Roll	246.705963	246.8621470338862	[s] Primary exposure time	0.000000	3.2
[mm] SIM focus pos	-0.684267	-0.6828225247311905			
[mm] SIM defocus	0	0.001444936568705701			
[mm] SIM translation stage pos	-190.132523	-190.1400660498719			
[mm] SIM translation stage offset	0	0.00754346686406393			
[s] Observation start time (MET)	76358934.184000	76357901.874892			
Observation start date	2000-06-02T18:47:50	2000-06-02T18:31:41			
[s] Observation end time (MET)	76385934.184000	76387103.100967			
Observation end date	2000-06-03T02:17:50	2000-06-03T02:38:23			
Read mode	TIMED	TIMED			

2.3 Aspect



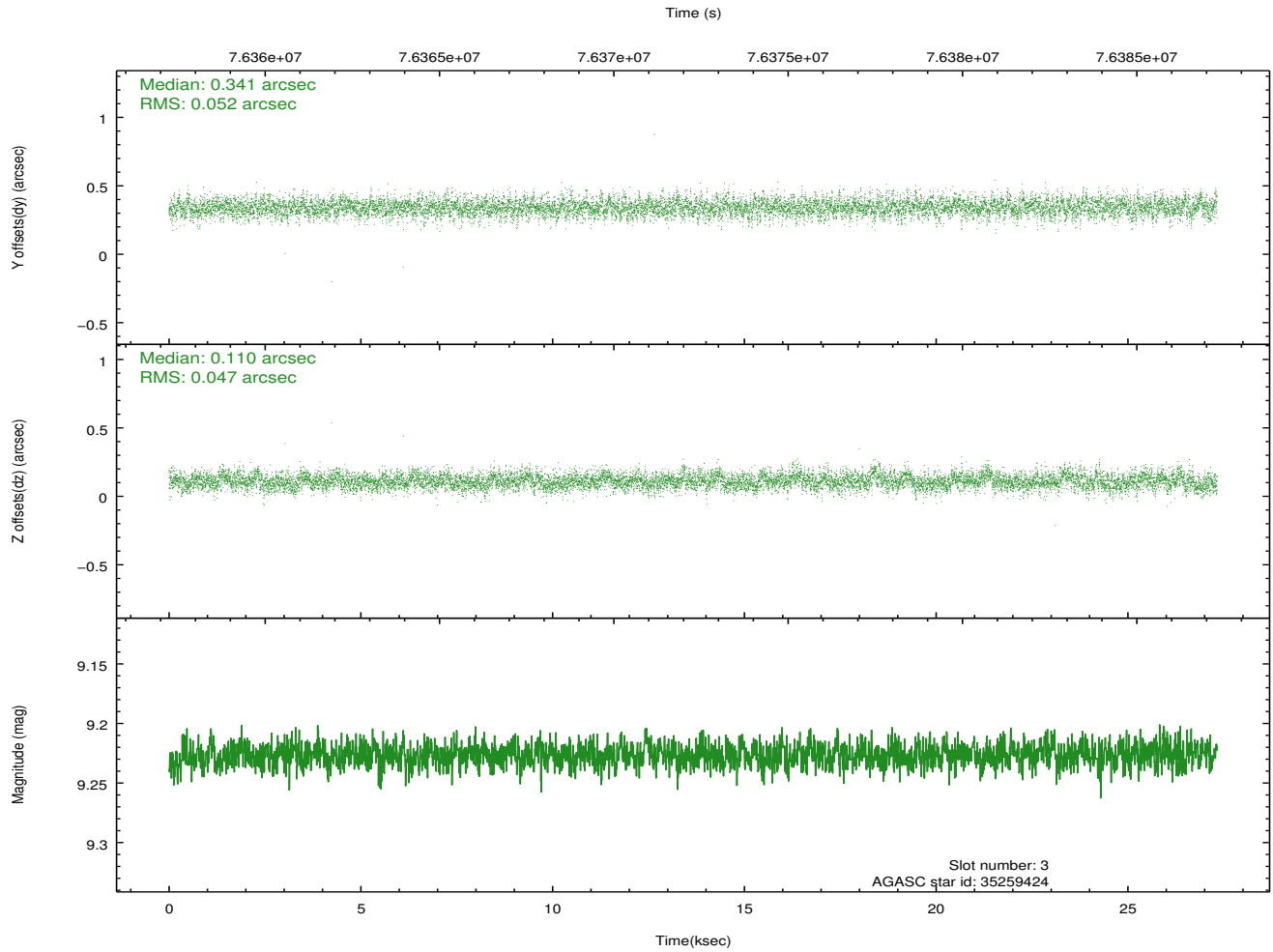
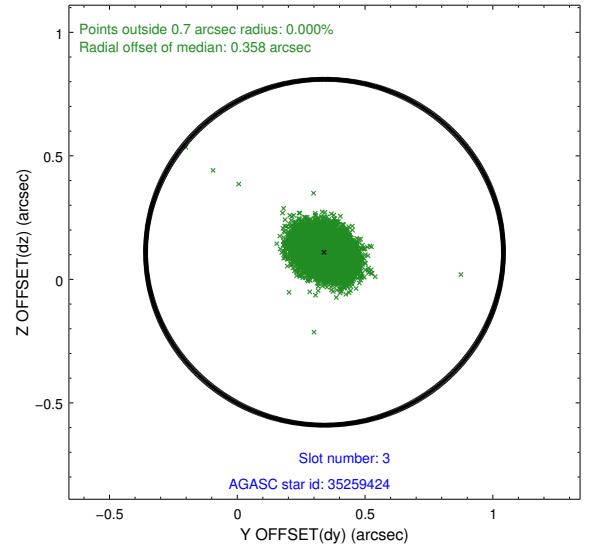
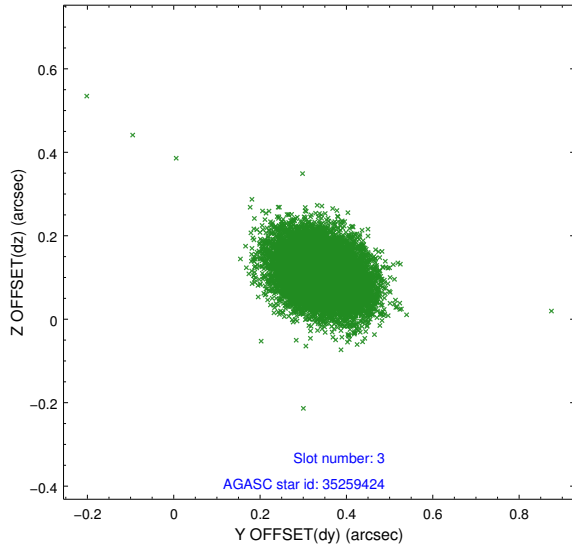


Slot Statistics

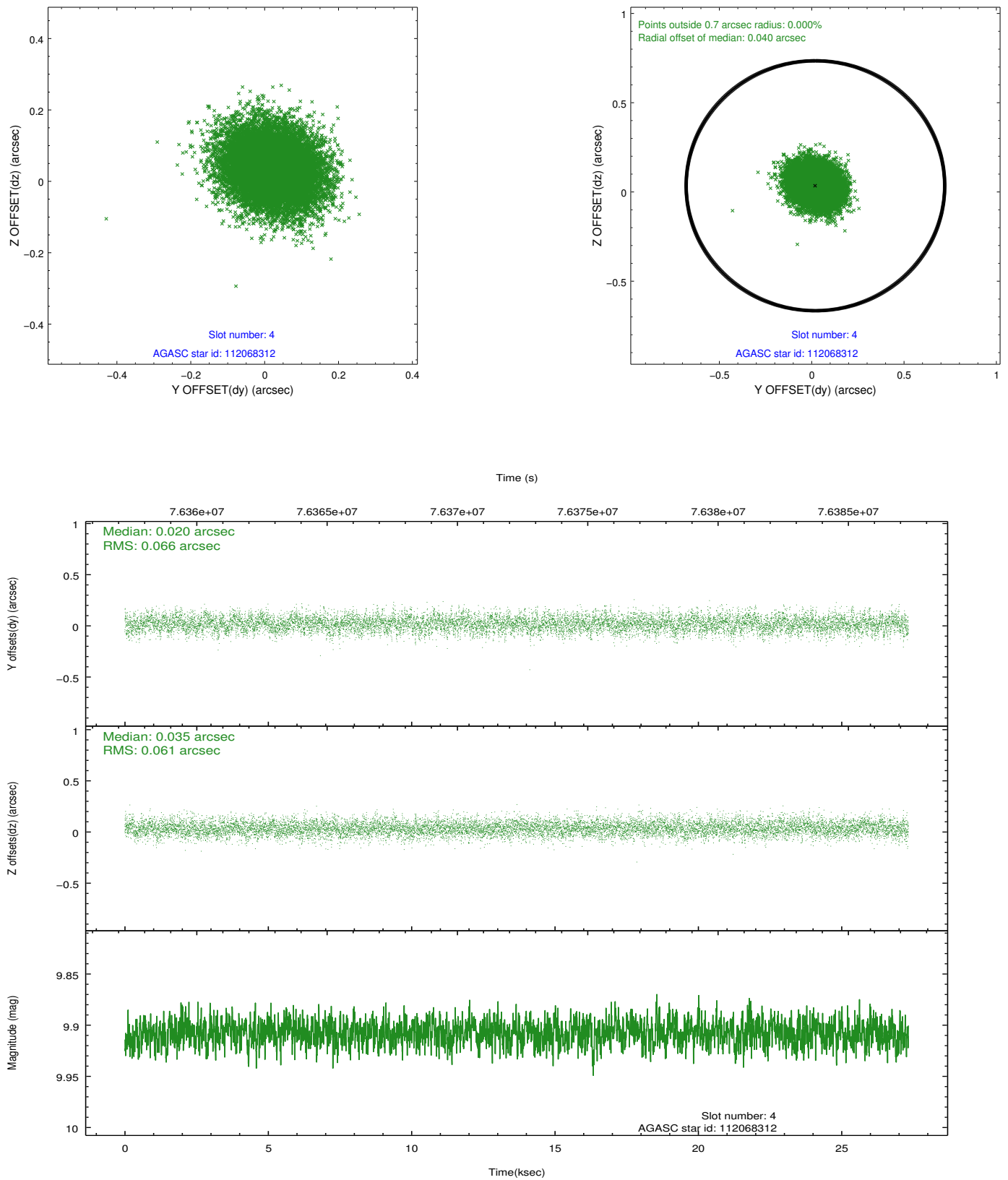
slot	status	id	mag	n_pts	med_dy	med_dz	dr1	dr2	ra	dec	mean_y	mean_z
0	FID	ACIS-S-2	7.11	6666	-0.036	-0.004	0.006	0.010	0.000000	0.000000	-753.82	-1726.03
1	FID	ACIS-S-4	7.21	6665	0.005	0.018	0.006	0.011	0.000000	0.000000	2159.45	182.38
2	FID	ACIS-S-5	7.23	6665	-0.000	-0.005	0.007	0.011	0.000000	0.000000	-1806.51	176.13
3	GUIDE	35259424	9.23	13328	0.341	0.110	0.073	0.124	169.225147	7.406887	1714.61	-564.91
4	GUIDE	112068312	9.91	13323	0.020	0.035	0.095	0.157	169.673636	8.146330	-1363.16	-148.09
5	GUIDE	112067520	10.17	13322	-0.452	-0.160	0.123	0.200	169.288653	7.745293	504.97	-838.12
6	GUIDE	112067920	9.68	13325	0.142	-0.119	0.097	0.157	169.119483	7.596078	1237.55	-1180.58
7	GUIDE	112068528	8.76	13328	-0.052	0.134	0.075	0.124	169.984852	7.578312	74.57	1681.13

2.4 Star Slots

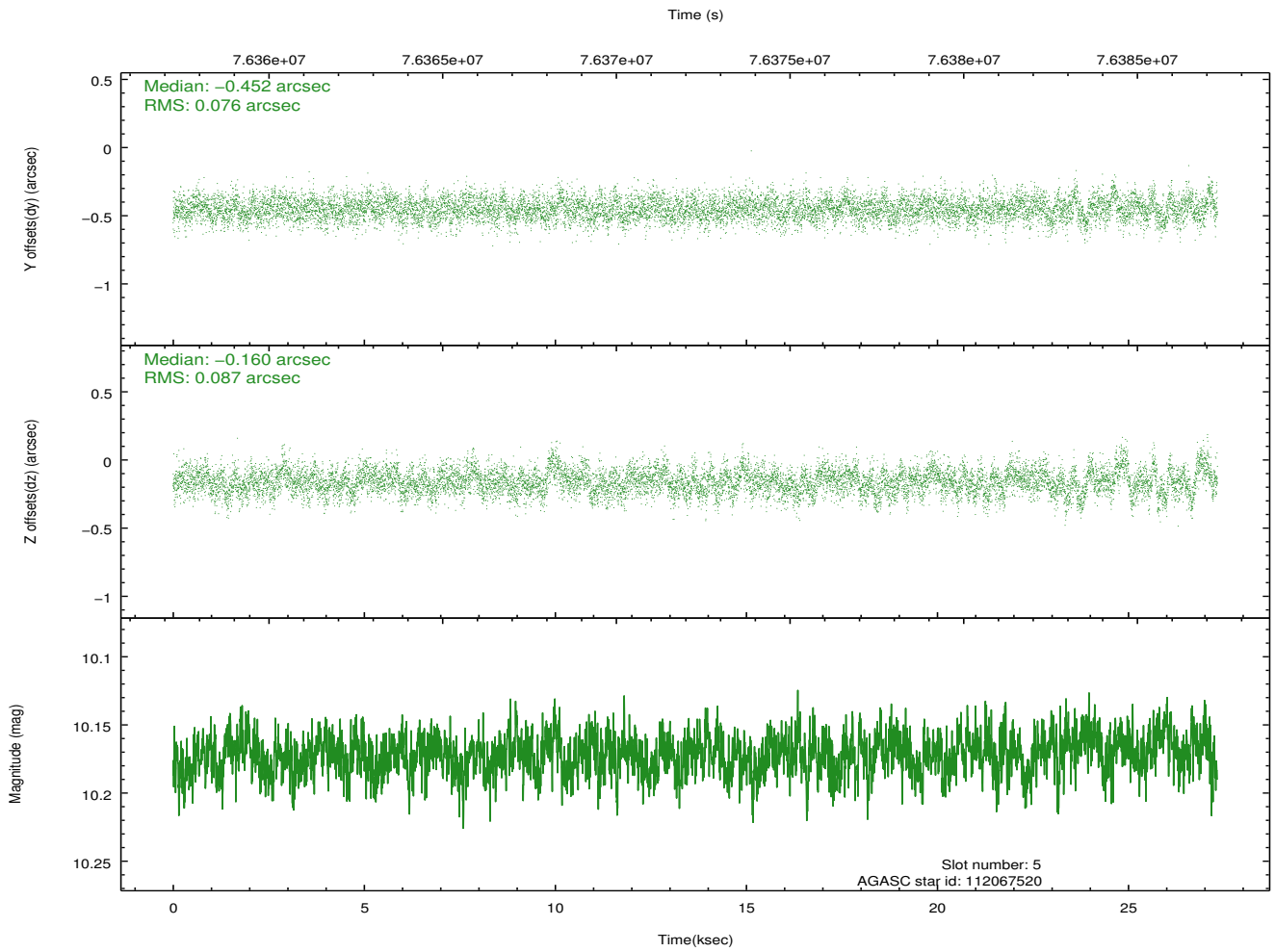
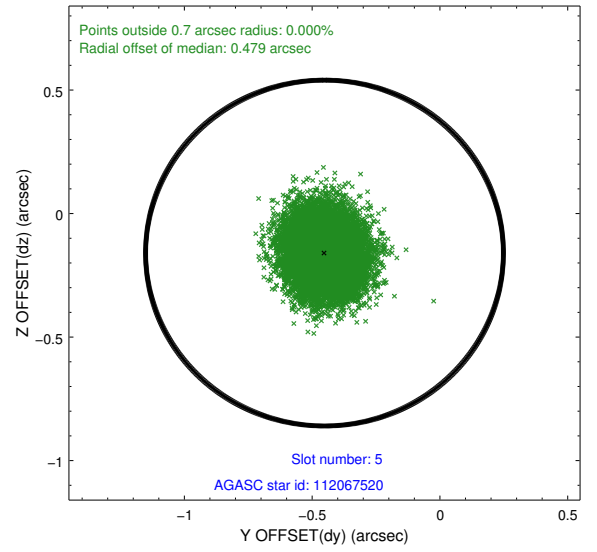
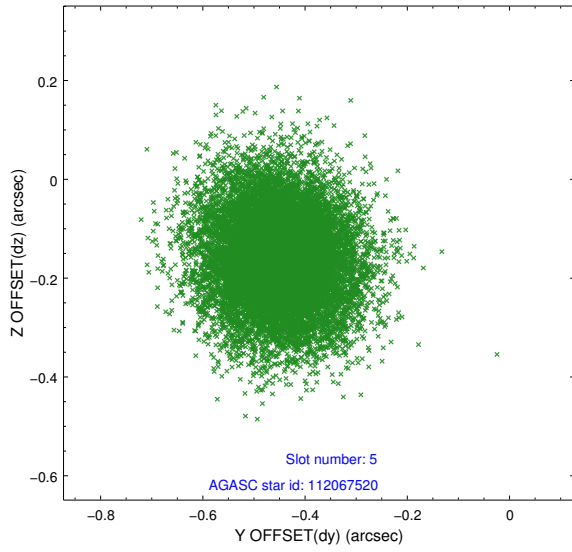
2.4.1 Slot 3



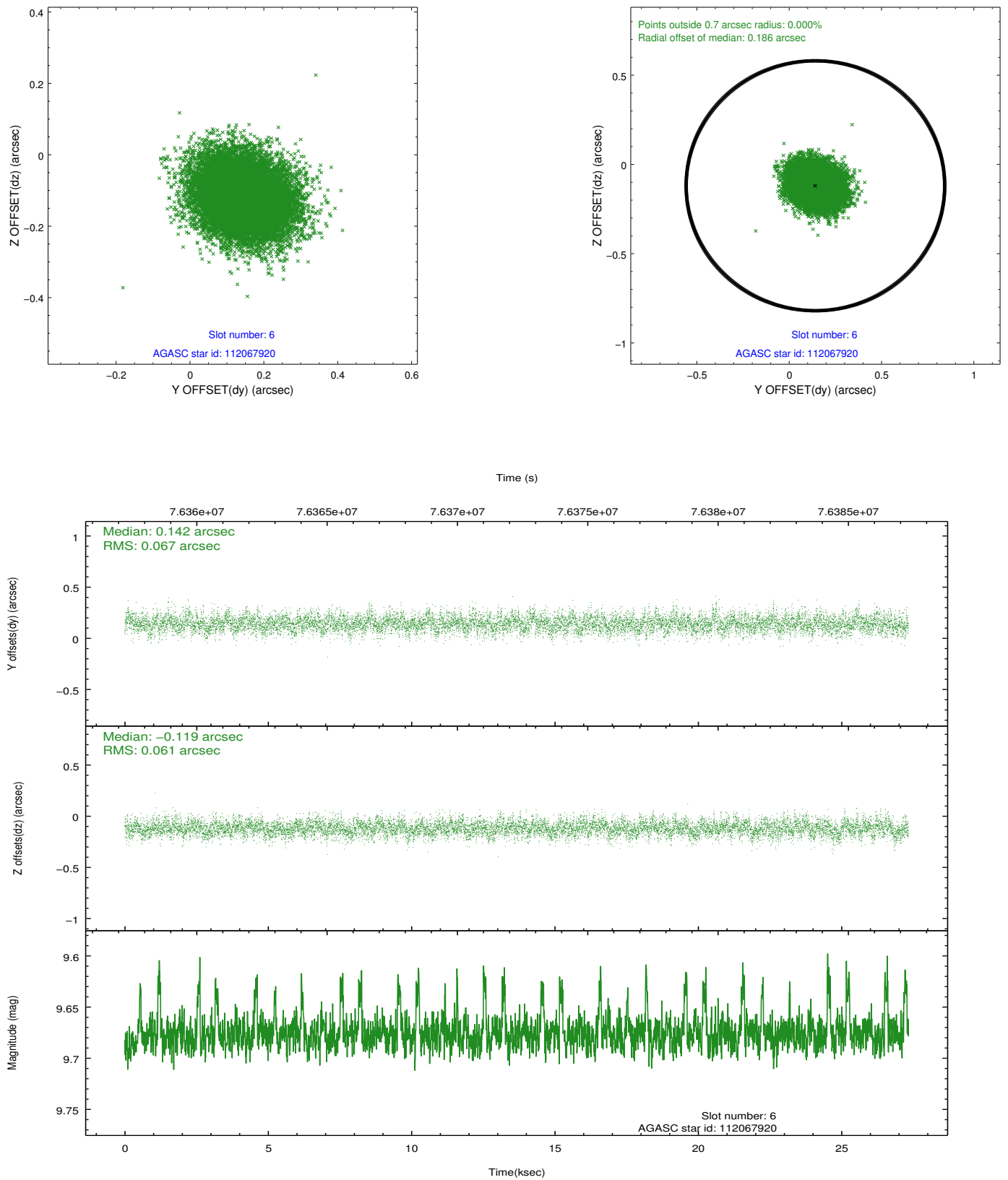
2.4.2 Slot 4



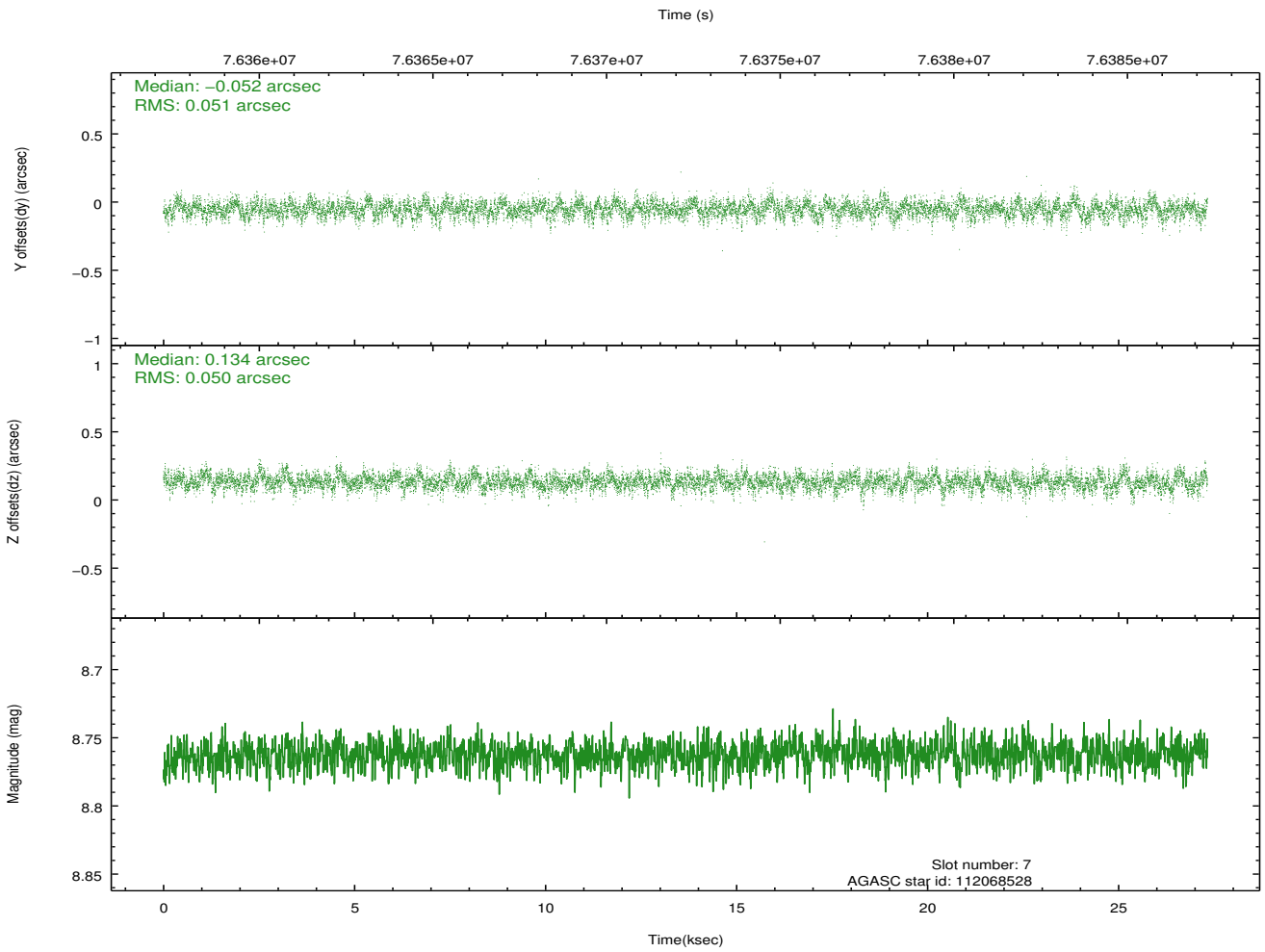
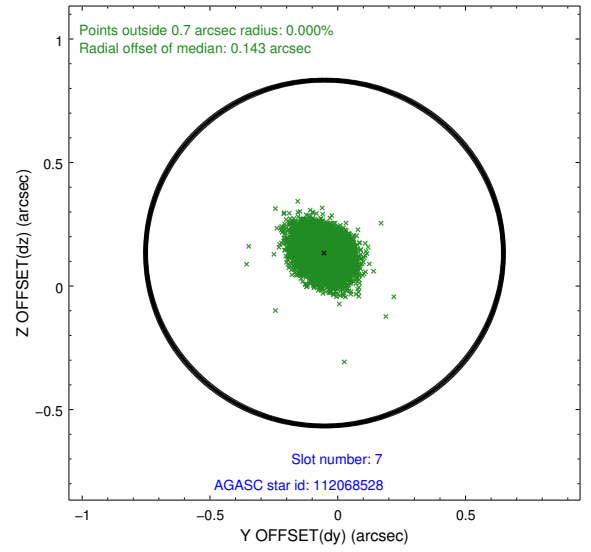
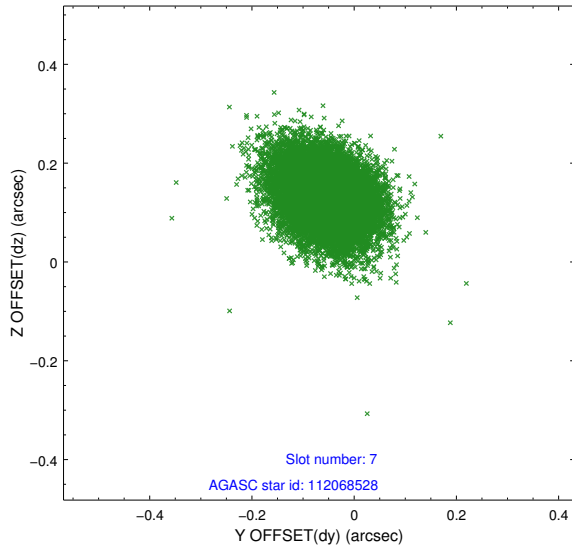
2.4.3 Slot 5



2.4.4 Slot 6

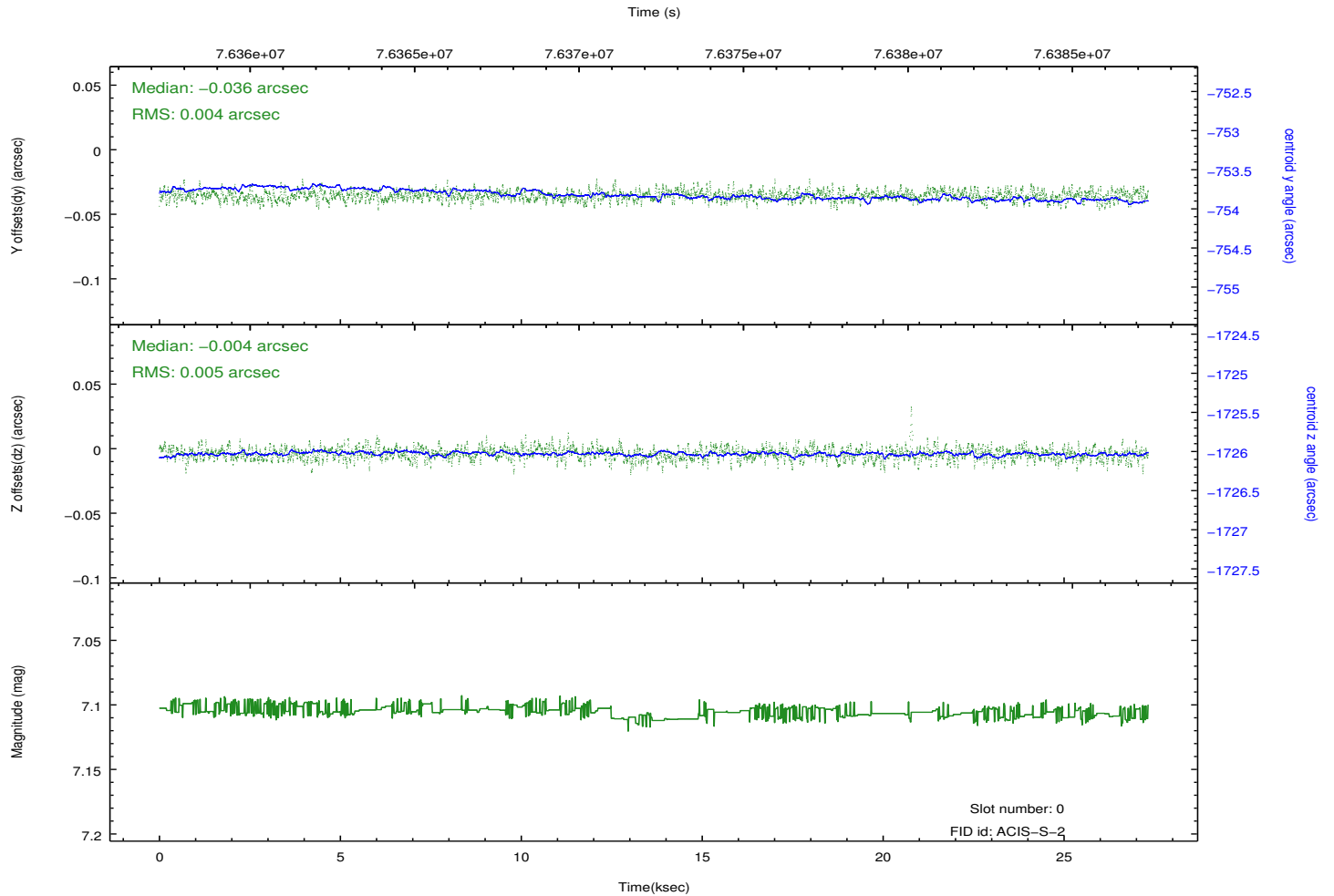
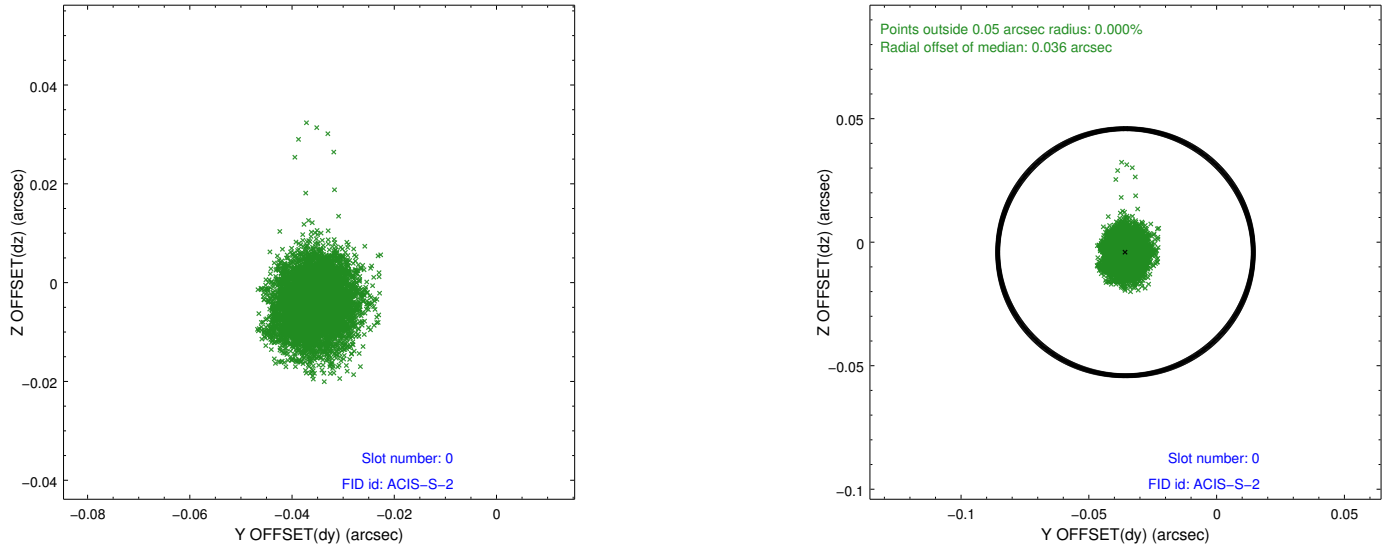


2.4.5 Slot 7

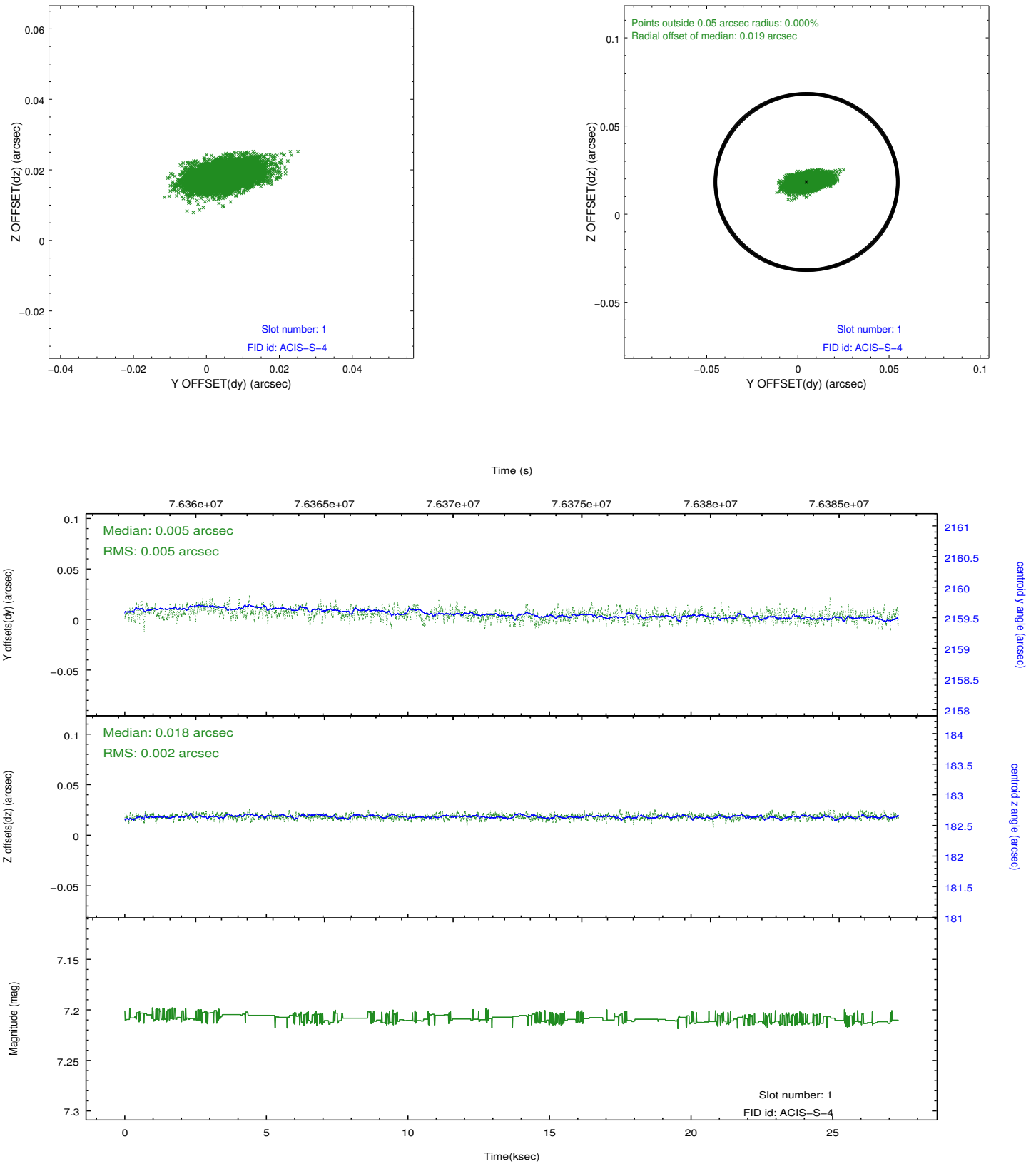


2.5 FID Slots

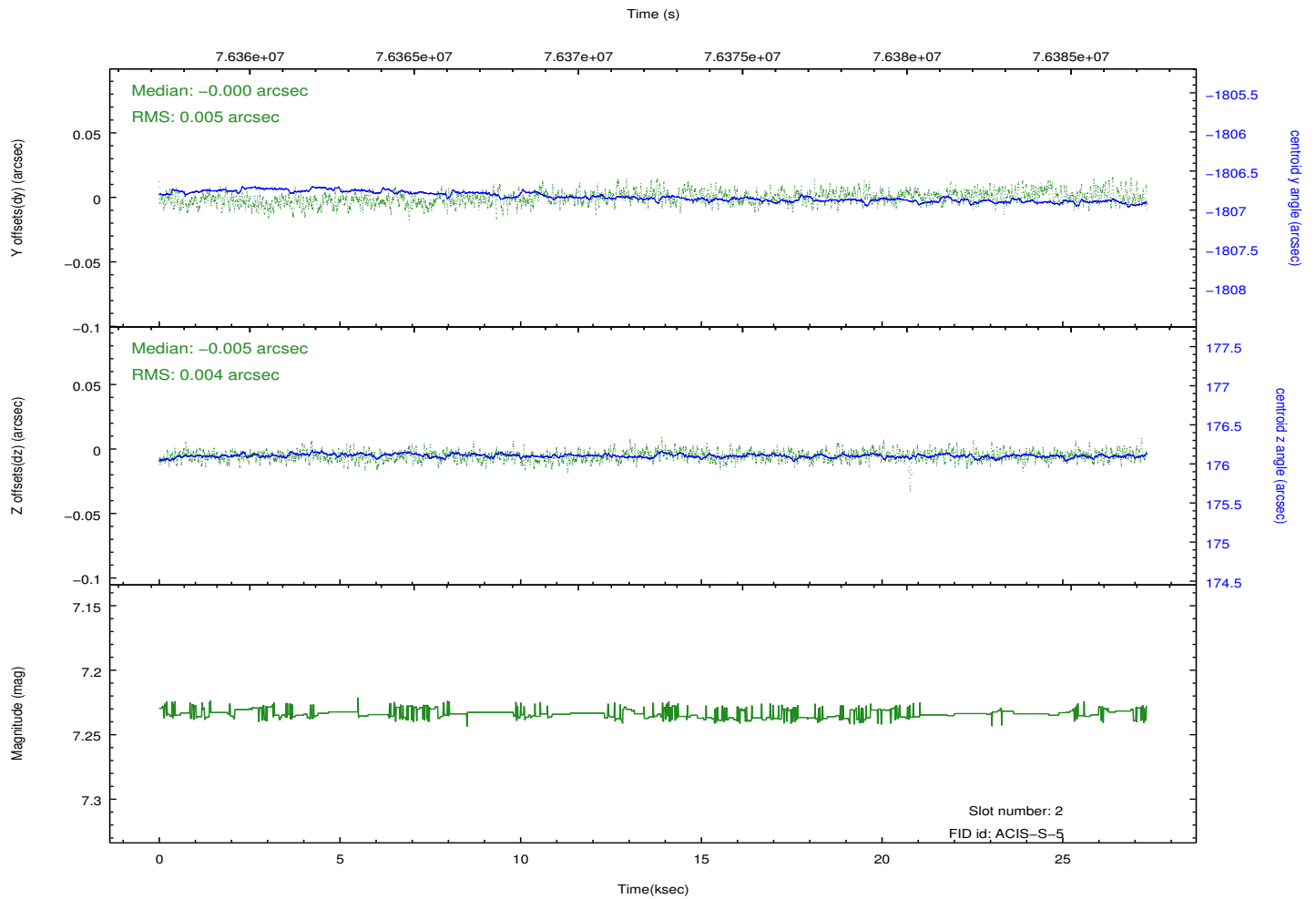
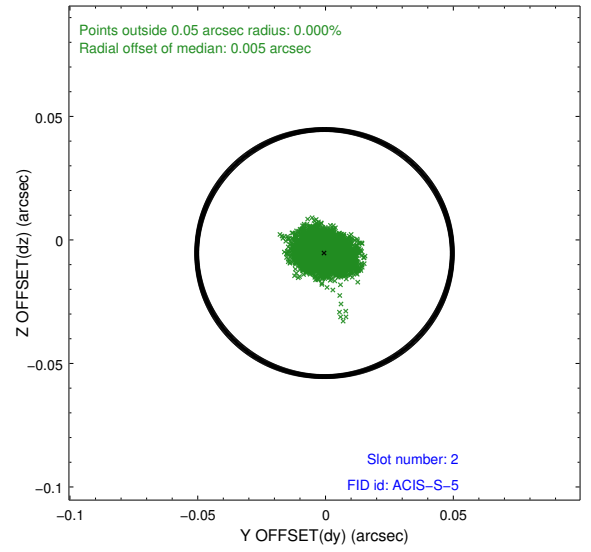
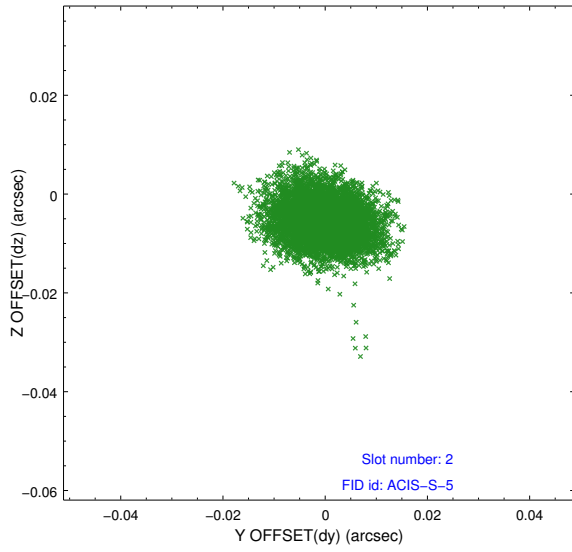
2.5.1 Slot 0



2.5.2 Slot 1



2.5.3 Slot 2



A Summary

A.1 Status

V&V Scientist	Jen Lauer
V&V Date (YYYY-MM-DD)	2012.08.31
V&V Edition	1
V&V Disposition and Status	OK
V&V Charge Time	26.832

A.2 Comments