

V&V Reference Report

L2 ASCDS Version : 8.4.5

Observation 3663 - L2 Version 3
Chandra X-Ray Center

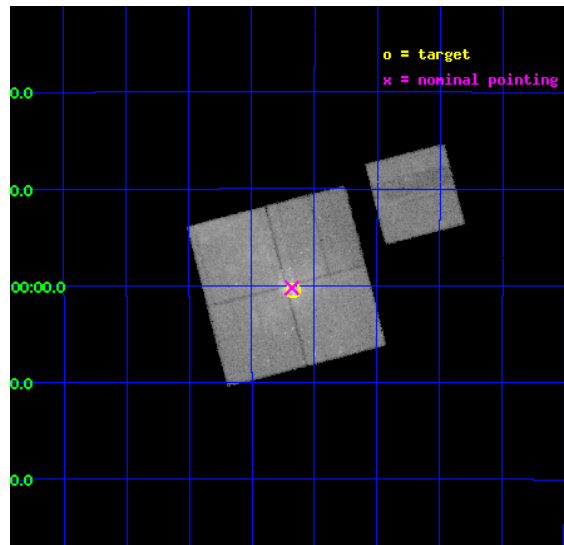
L2 Processing Date : Oct 8 2012

Contents

1	Front	2
2	OBI	3
2.1	OBI	3
2.1.1	Images	3
2.1.2	Bias	3
2.1.3	Parameters	4
2.1.4	Events	4
2.2	Compared Parameters	5
2.3	Aspect	6
2.4	Star Slots	9
2.4.1	Slot 3	9
2.4.2	Slot 4	10
2.4.3	Slot 5	11
2.4.4	Slot 6	12
2.4.5	Slot 7	13
2.5	FID Slots	14
2.5.1	Slot 0	14
2.5.2	Slot 1	15
2.5.3	Slot 2	16
A	Summary	17
A.1	Status	17
A.2	Comments	17

1 Front

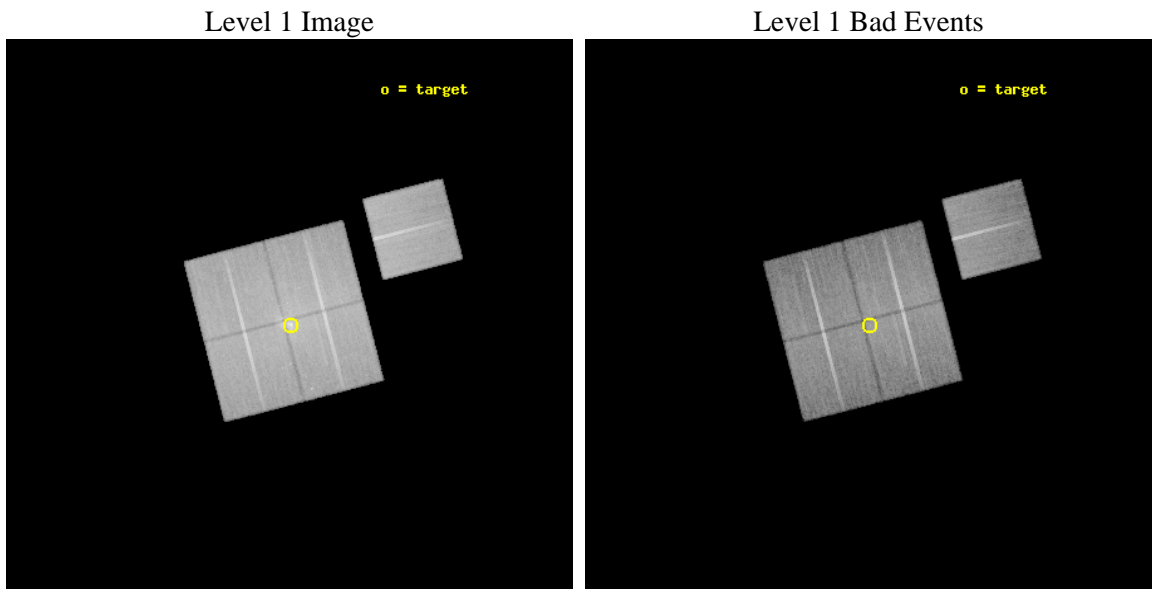
seq_num	600280	Sequence number
obs_id	3663	Observation id
title	MONITORING THE EXTREME X-RAY FLARING OF SAGITTARIUS A* AND A DEEP SURVEY OF THE CENTRAL 40 PC OF THE GALAXY	Proposal title
observer	Dr. Frederick Baganoff	Principal investigator
object	SGR A*	Source name
dtcycle	0	
cycle	P	events from which exps? Prim/Second/Both
ra_targ	266.416667	Observer's specified target RA [deg]
dec_targ	-29.007778	Observer's specified target Dec [deg]
ra_nom	266.41993005894	Nominal RA [deg]
dec_nom	-29.00406497704	Nominal Dec [deg]
roll_nom	75.510272122746	Nominal Roll [deg]
revision	3	Processing version of data
ontime	38460.817933768	Sum of GTIs [s]
livetime	37958.299033021	Livetime [s]
ontime0	38463.835783988	Sum of GTIs [s]
ontime1	38460.735843778	Sum of GTIs [s]
ontime2	38463.917863995	Sum of GTIs [s]
ontime3	38460.817933768	Sum of GTIs [s]
ontime6	38463.794743985	Sum of GTIs [s]
l2events	335239	Number of level 2 events



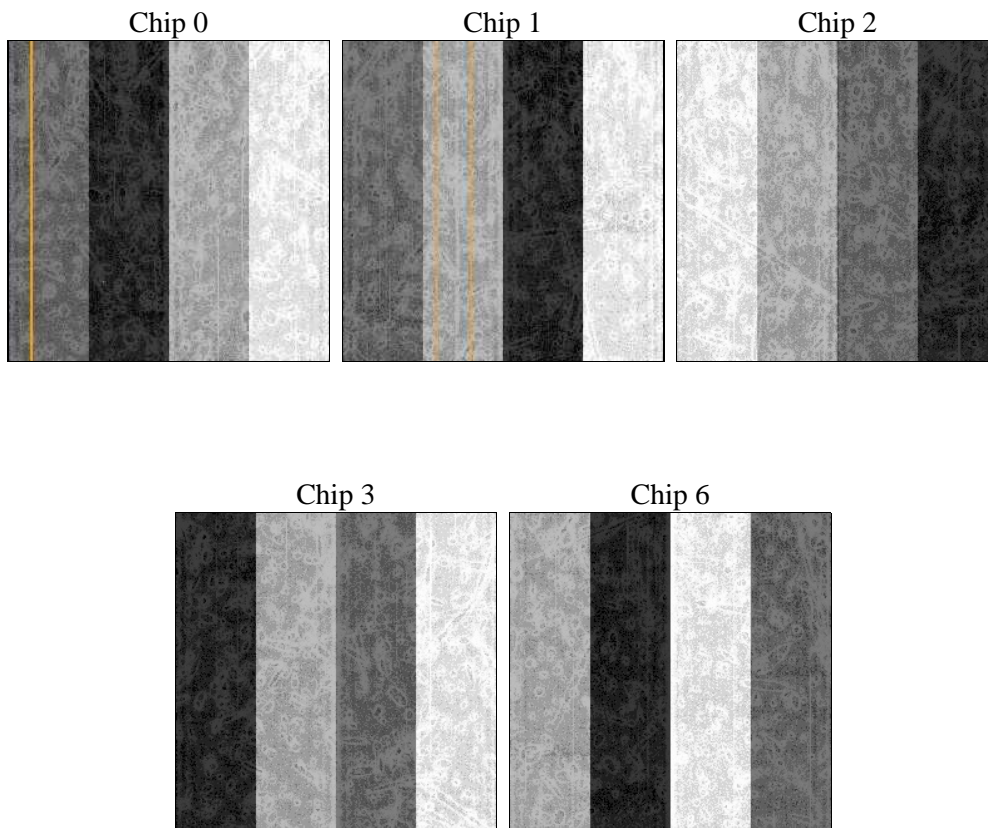
2 OBI

2.1 OBI

2.1.1 Images



2.1.2 Bias



2.1.3 Parameters

obi_num	0	Obi number	sched_exp_time	38347.680000	[s] Scheduled observation exposure time
ascdsver	8.4.5	Processing system revision	ontime	38460.817933768	Sum of GTIs [s]
caldbver	4.5.2	 	ontime0	38463.835783988	Sum of GTIs [s]
date	2012-10-08T08:27:07	Date and time of file creation	ontime1	38460.735843778	Sum of GTIs [s]
revision	3	Processing version of data	ontime2	38463.917863995	Sum of GTIs [s]
			ontime3	38460.817933768	Sum of GTIs [s]
			ontime6	38463.794743985	Sum of GTIs [s]
			l1events	1531993	Number of level 1 events

2.1.4 Events

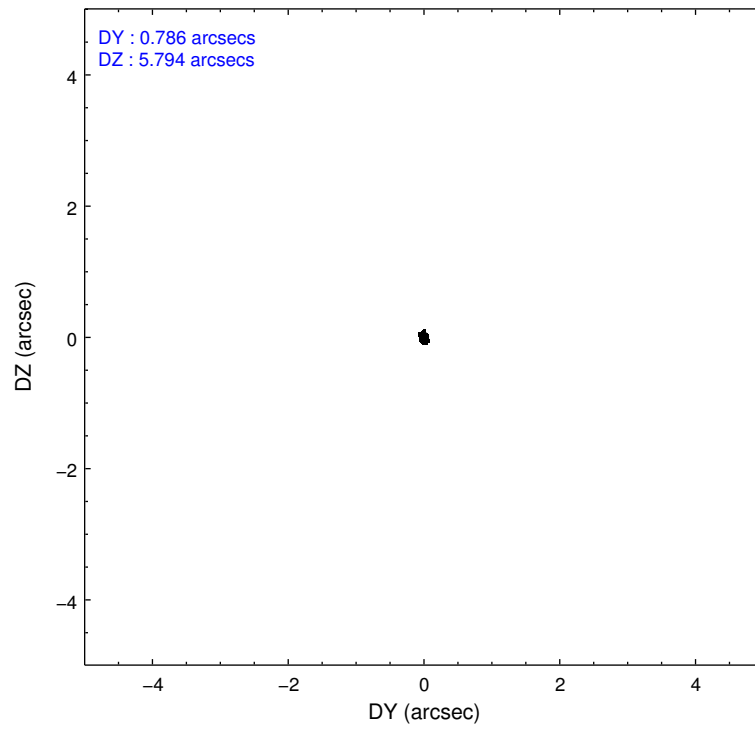
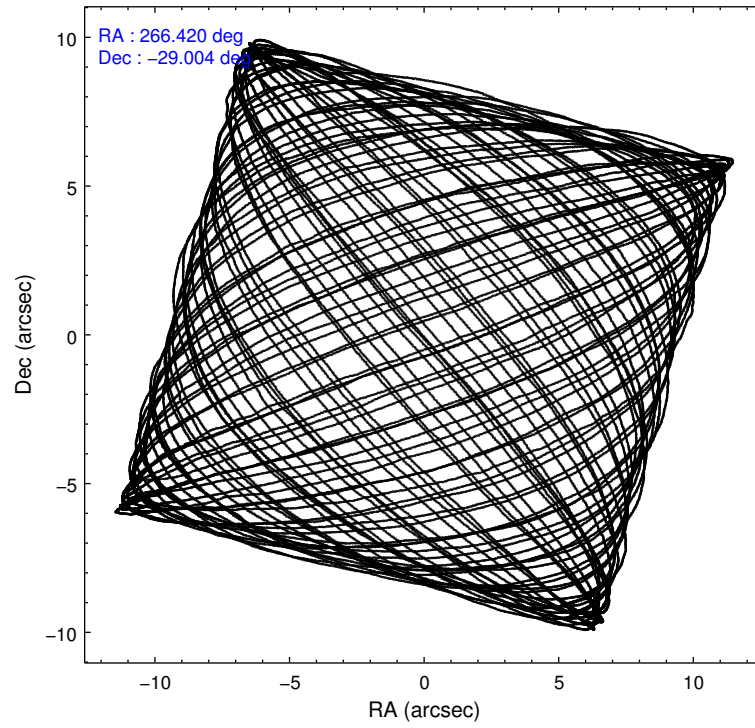
	ccd 0	ccd 1	ccd 2	ccd 3	ccd 6
level 1 events	306045	293199	315510	323154	294085
rejected events	209780	217130	241137	239667	244210
rejected %	68%	74%	76%	74%	83%

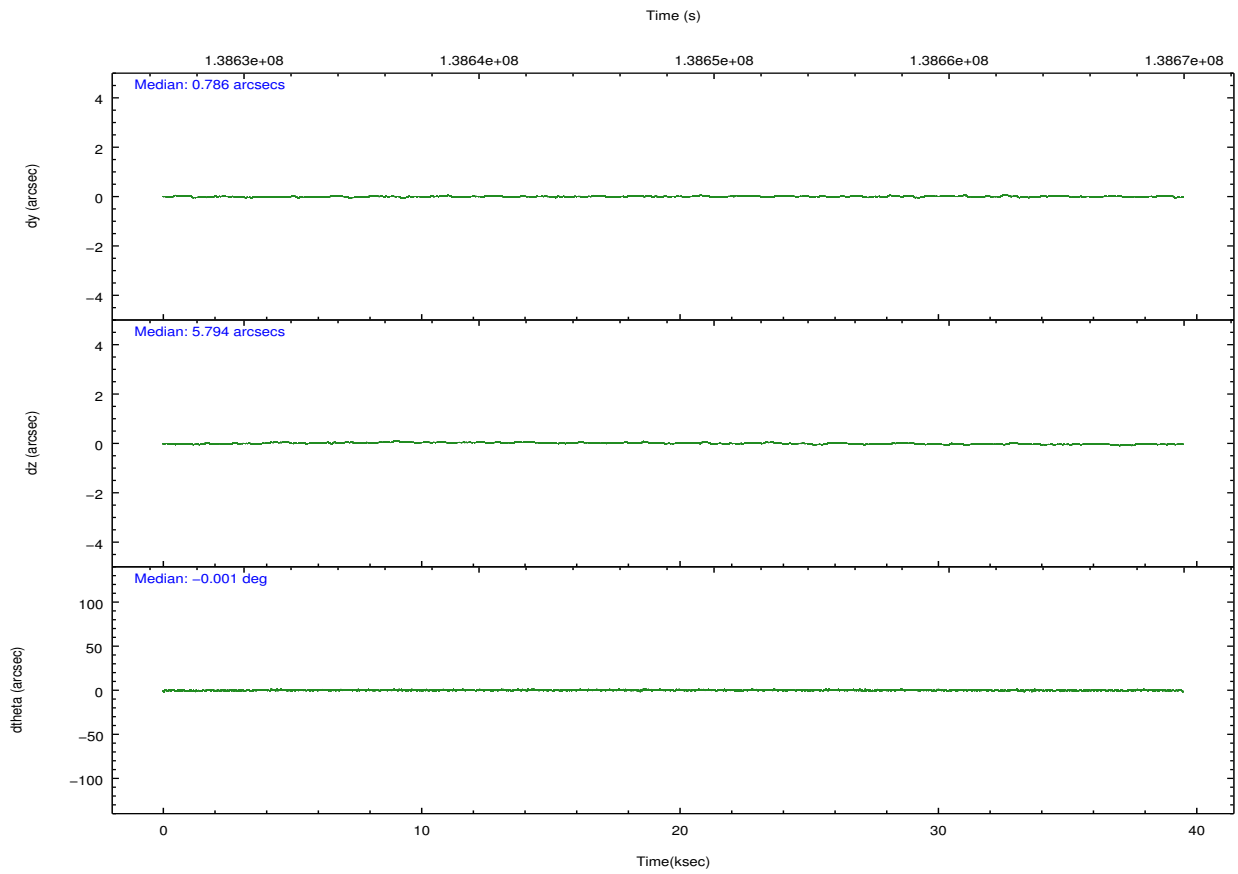
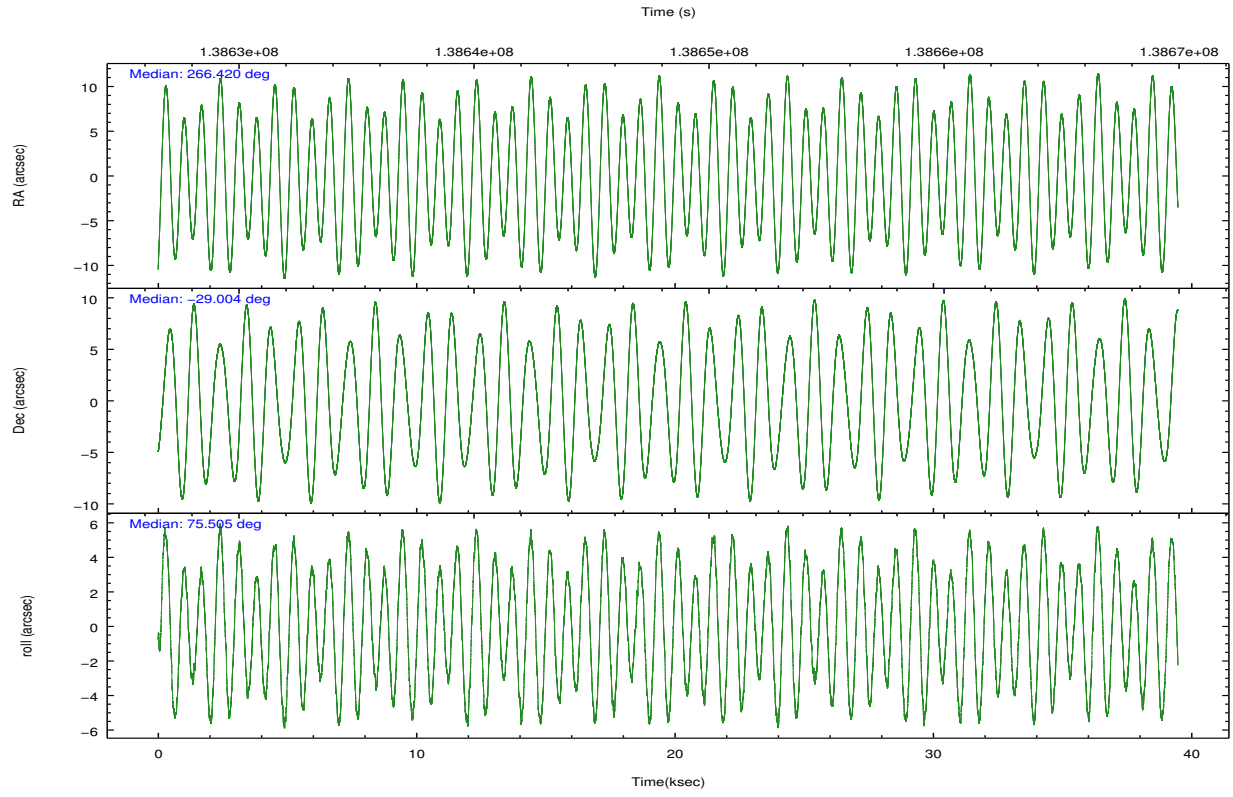
	ccd 0	ccd 1	ccd 2	ccd 3	ccd 6
grade 0 events	55262	39599	40221	45863	23246
	18%	13%	12%	14%	7%
grade 1 events	355	253	243	254	166
	0%	0%	0%	0%	0%
grade 2 events	18328	15724	15195	16294	11815
	5%	5%	4%	5%	4%
grade 3 events	5545	4832	4333	4940	3305
	1%	1%	1%	1%	1%
grade 4 events	5403	4843	4782	4987	3210
	1%	1%	1%	1%	1%
grade 5 events	9369	9673	8719	9816	10179
	3%	3%	2%	3%	3%
grade 6 events	11741	11091	9853	11411	8305
	3%	3%	3%	3%	2%
grade 7 events	200042	207184	232164	229589	233859
	65%	70%	73%	71%	79%

2.2 Compared Parameters

Parameter	Planned	Actual	Parameter	Planned	Actual
Instrument	ACIS	ACIS	Obspar format version number	7	7
Detector	ACIS-01236	ACIS-01236	Obspar file type	PREDICTED	ACTUAL
Grating	NONE	NONE	Obspar update status	NONE	UPDATED
Data mode	FAINT	FAINT	Number of optional ACIS chips dropped	0	0
Observation mode	POINTING	POINTING	On-chip summing requested	N	N
[deg] Pointing RA	266.428394	266.4199300589415	Subarray requested	NONE	NONE
[deg] Pointing Dec	-29.030450	-29.00406497703961	Alternating exposures requested	N	N
[deg] Pointing Roll	75.305690	75.5102721227462	[s] Primary exposure time	0.000000	3.1
[s] Window start time (MET)	138505804.184000	138505804.184000			
[s] Window stop time (MET)	138662224.184000	138662224.184000			
[mm] SIM focus pos	-0.782348	-0.7809083437167272			
[mm] SIM defocus	0	0.001439871863259334			
[mm] SIM translation stage pos	-233.592463	-233.5874344608287			
[mm] SIM translation stage offset	0	-0.005018542100998502			
[s] Observation start time (MET)	138629644.184000	138628213.83894			
Observation start date	2002-05-24T12:13:00	2002-05-24T11:50:13			
[s] Observation end time (MET)	138667991.184000	138668306.20307			
Observation end date	2002-05-24T22:52:07	2002-05-24T22:58:26			
Read mode	TIMED	TIMED			

2.3 Aspect



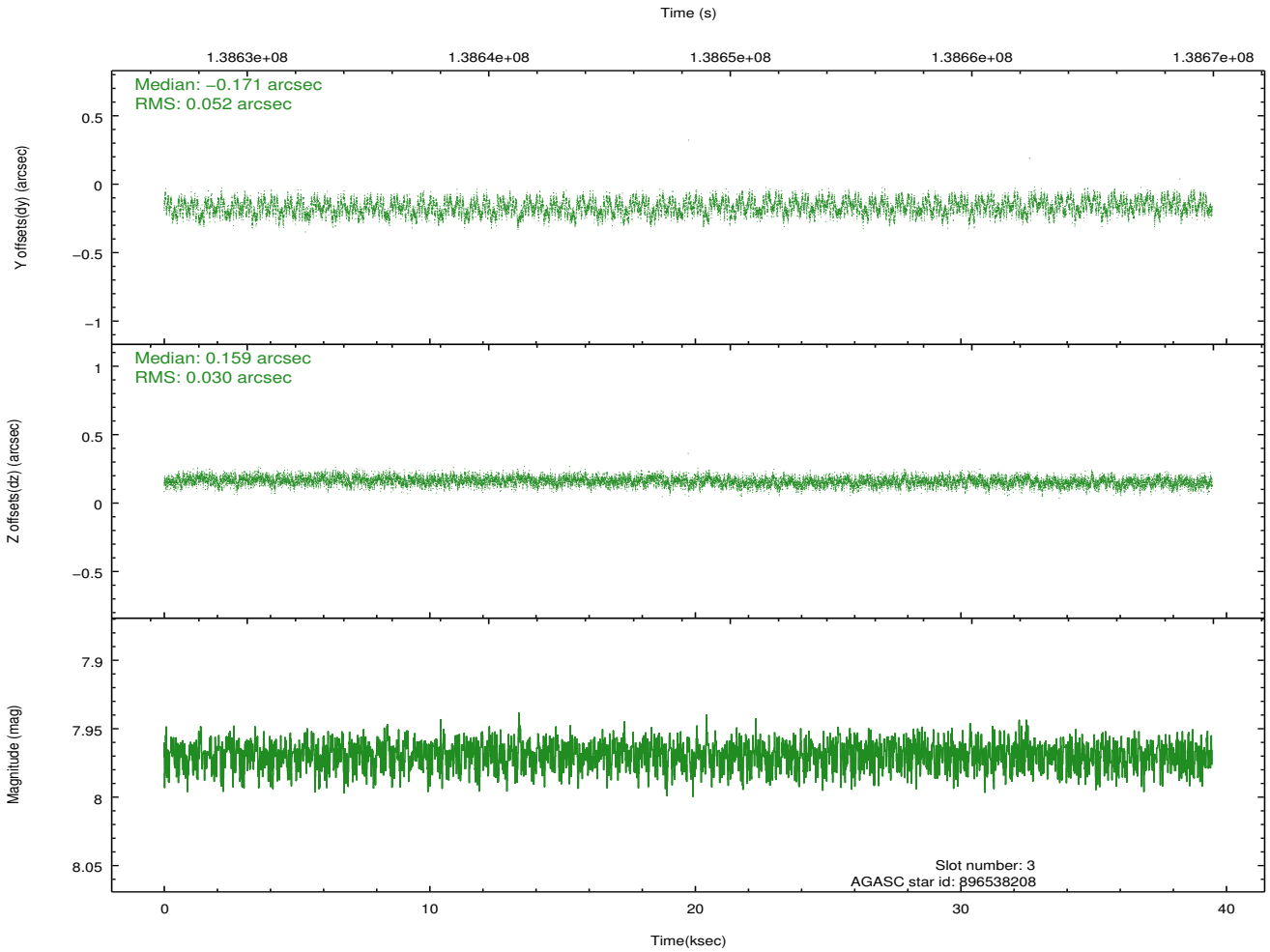
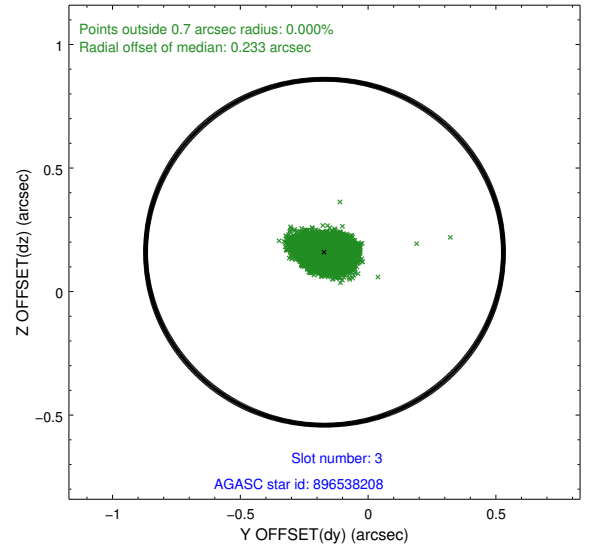
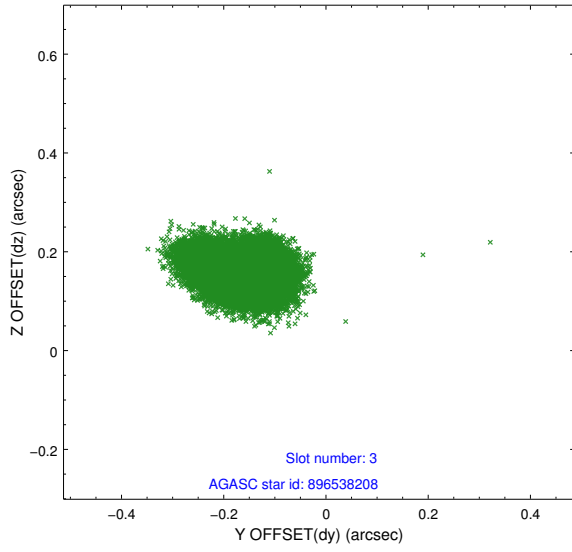


Slot Statistics

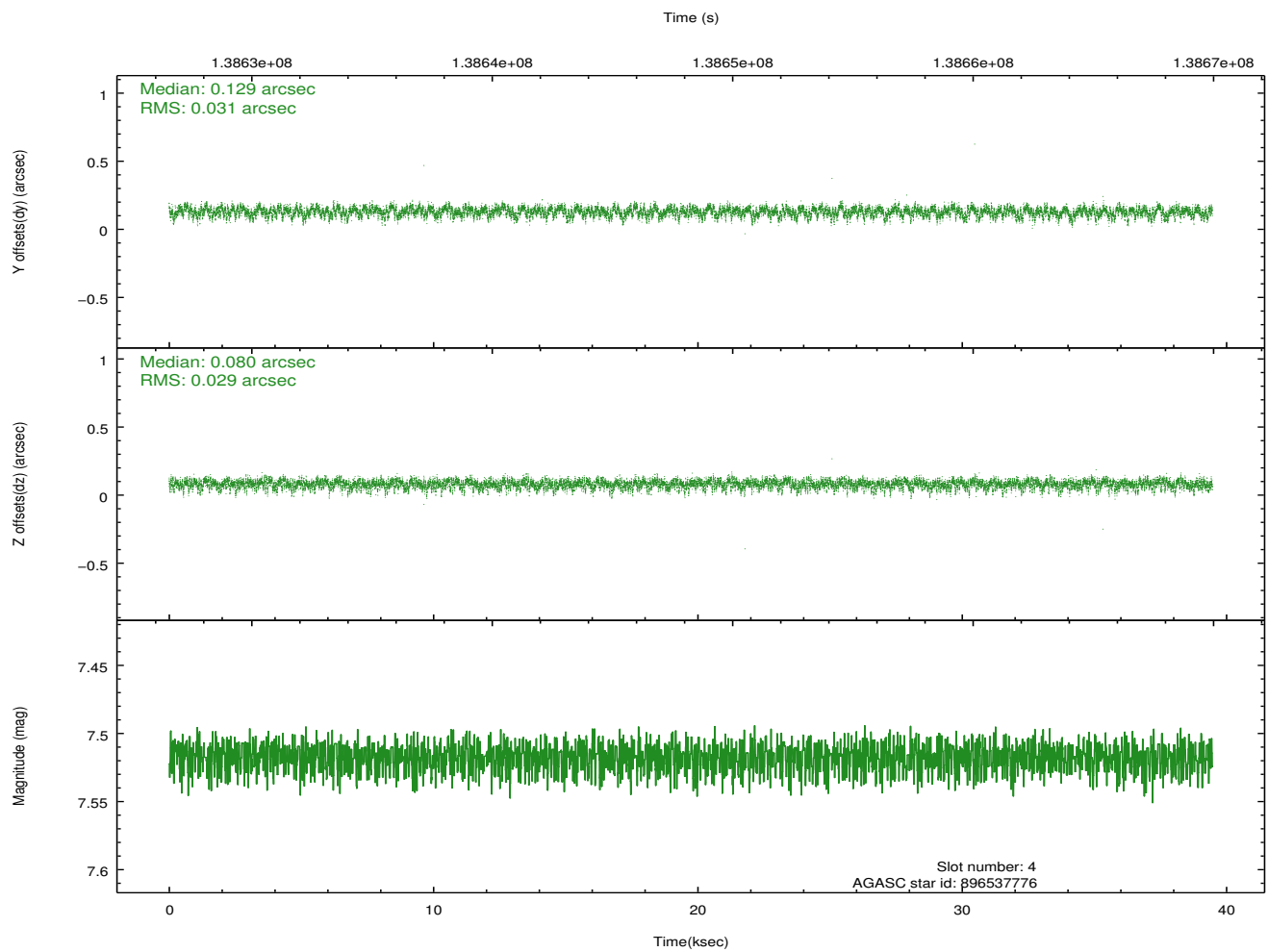
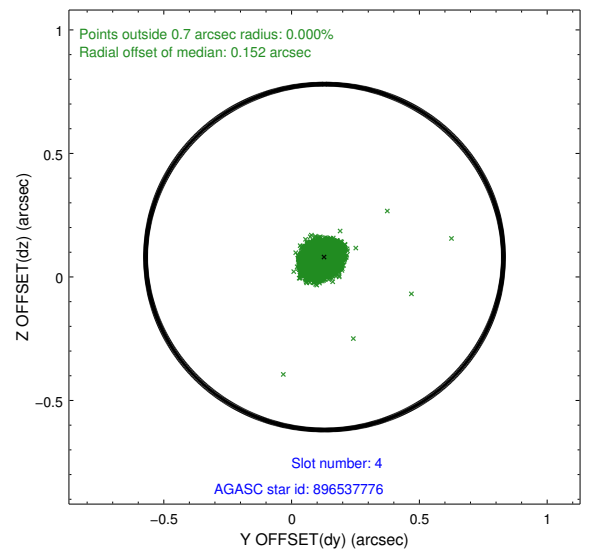
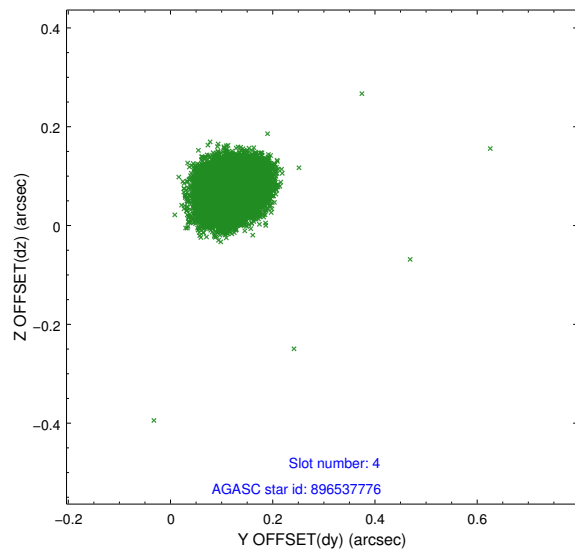
slot	status	id	mag	n_pts	med_dy	med_dz	dr1	dr2	ra	dec	mean_y	mean_z
0	FID	ACIS-I-1	7.25	9625	-0.017	0.022	0.006	0.011	0.000000	0.000000	939.04	-829.14
1	FID	ACIS-I-5	7.24	9624	-0.069	0.029	0.006	0.010	0.000000	0.000000	-1809.09	1068.37
2	FID	ACIS-I-6	7.26	9626	-0.006	0.020	0.007	0.011	0.000000	0.000000	404.60	1712.87
3	GUIDE	896538208	7.97	19252	-0.171	0.159	0.065	0.103	267.176969	-28.671626	1841.36	-1961.41
4	GUIDE	896537776	7.52	19253	0.129	0.080	0.044	0.074	266.655684	-29.665673	-2032.77	-1268.59
5	GUIDE	896541360	7.71	19251	0.087	0.038	0.049	0.081	266.684478	-29.453744	-1271.93	-1163.77
6	GUIDE	896403224	8.29	19249	0.150	-0.179	0.078	0.121	265.612825	-29.438915	-2080.53	2097.34
7	GUIDE	896534664	8.20	19245	-0.196	-0.093	0.068	0.113	266.405570	-28.407461	2149.96	638.69

2.4 Star Slots

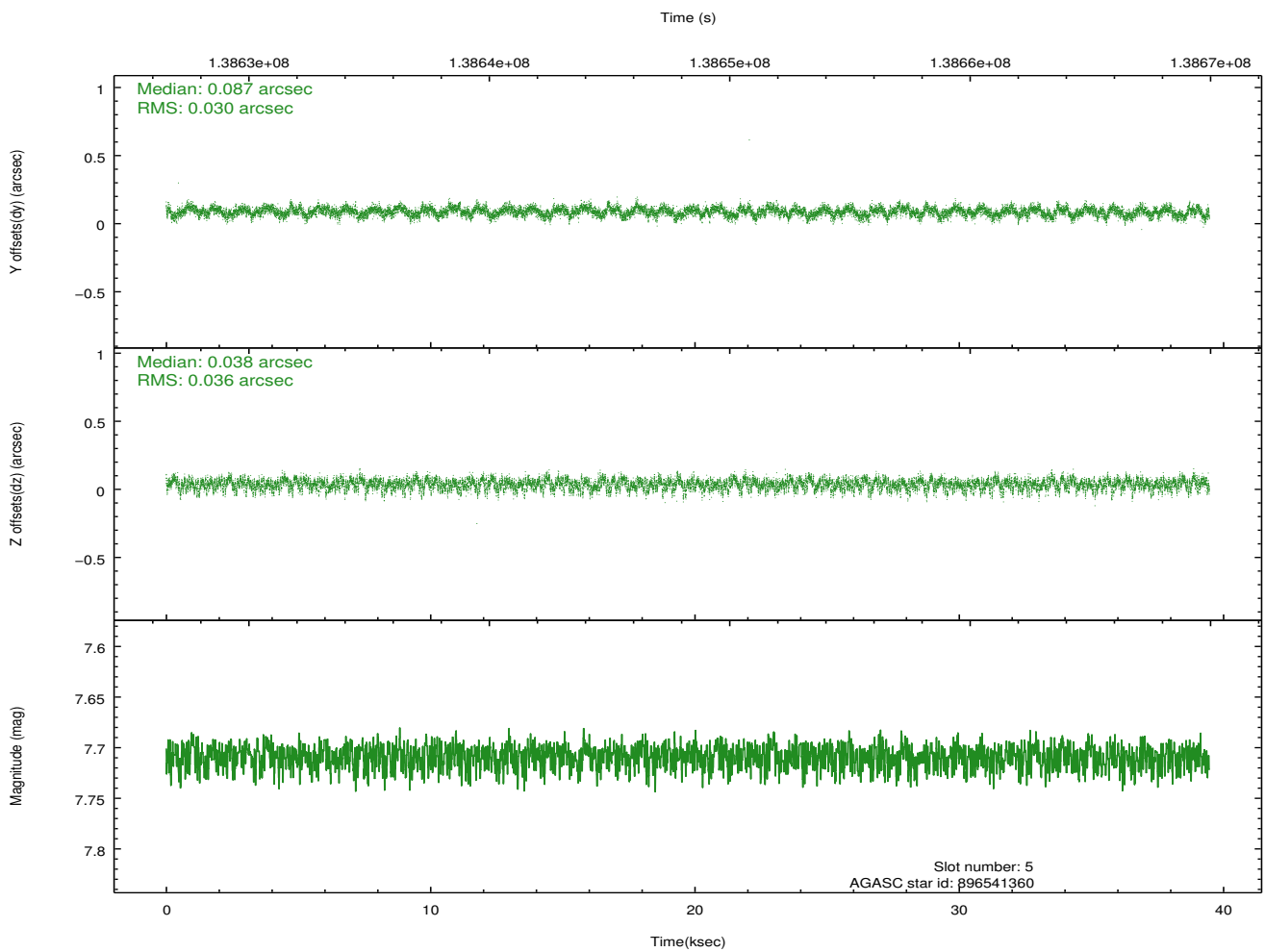
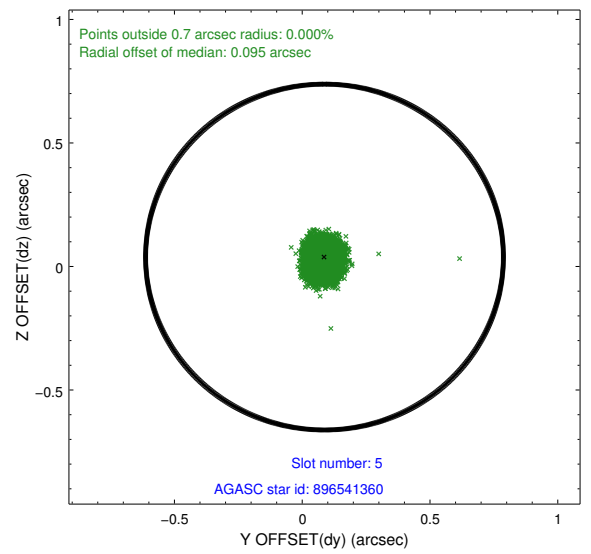
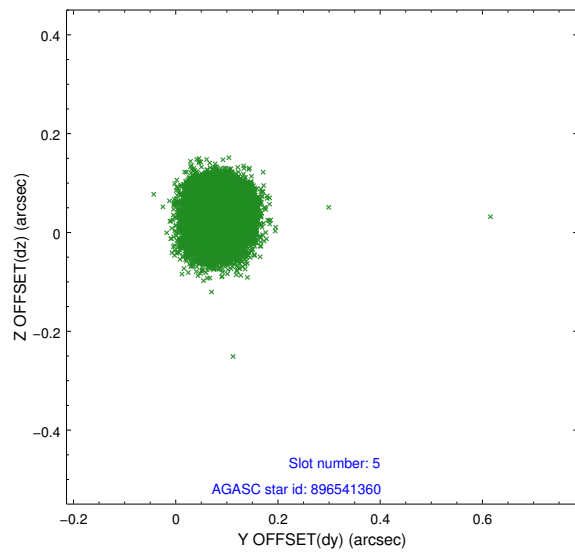
2.4.1 Slot 3



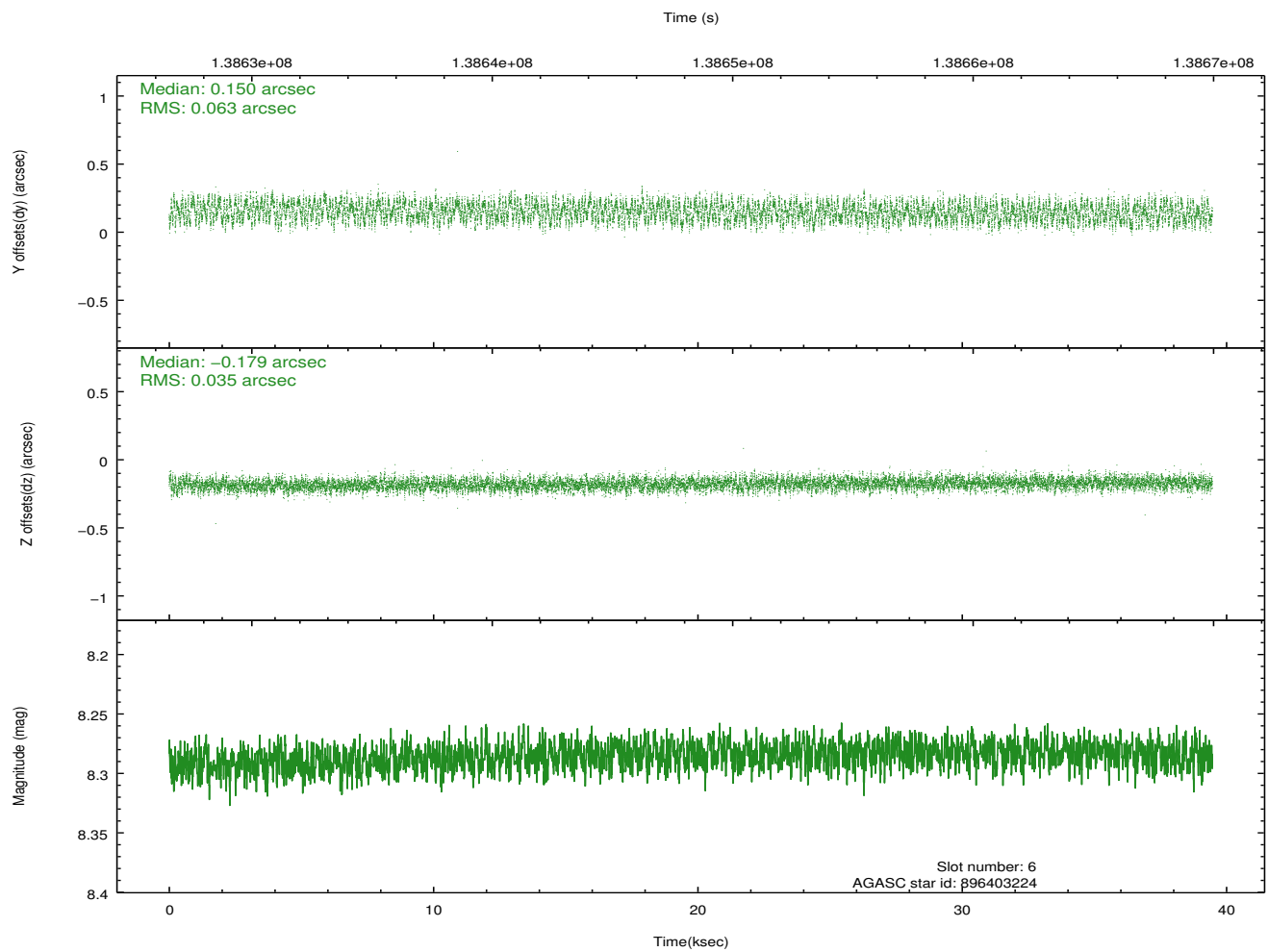
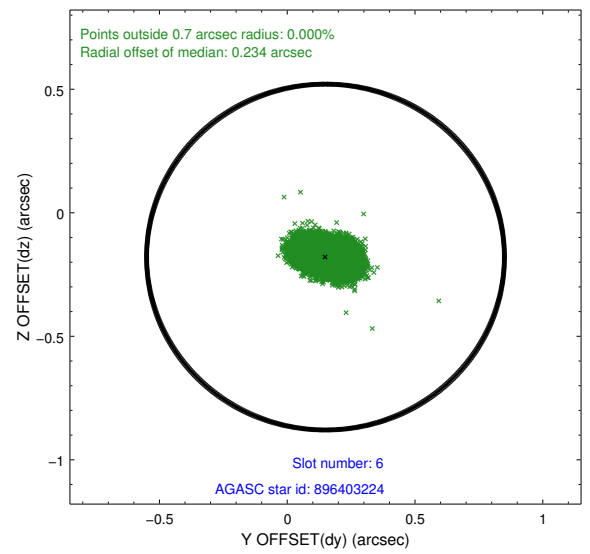
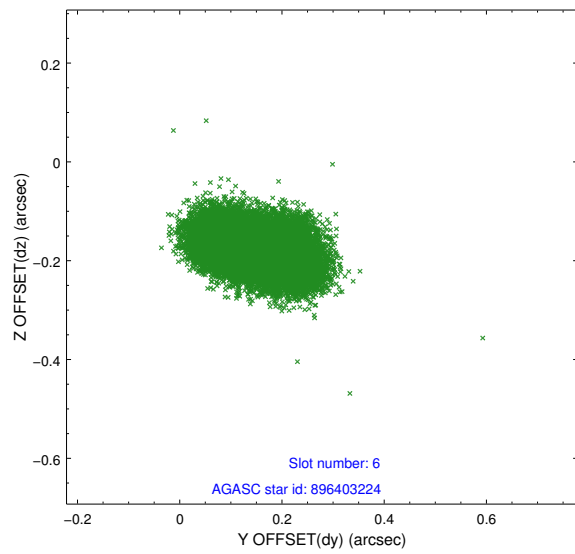
2.4.2 Slot 4



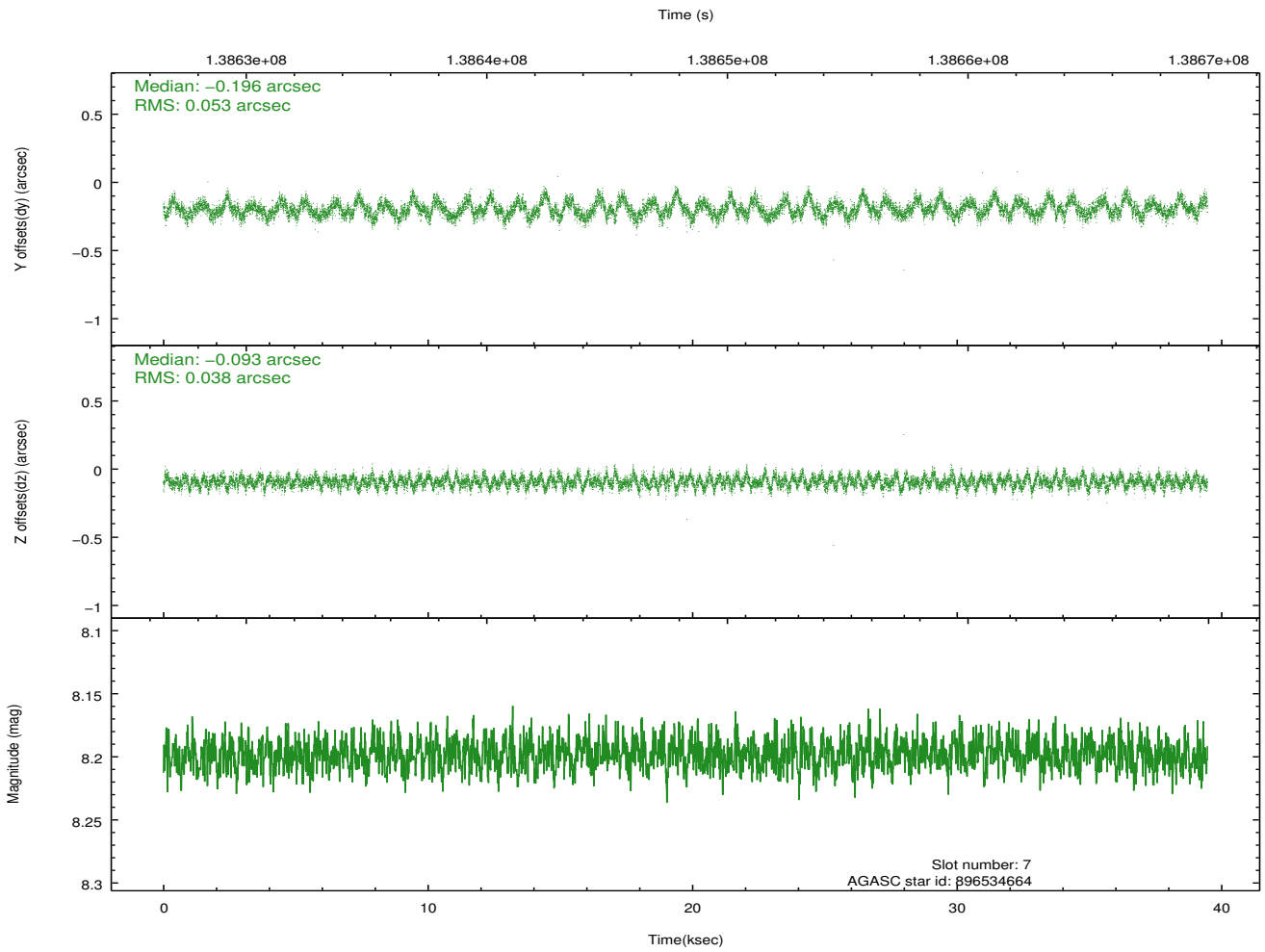
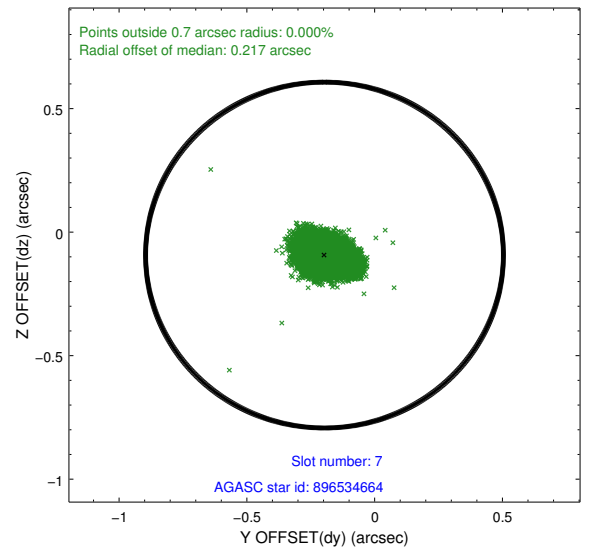
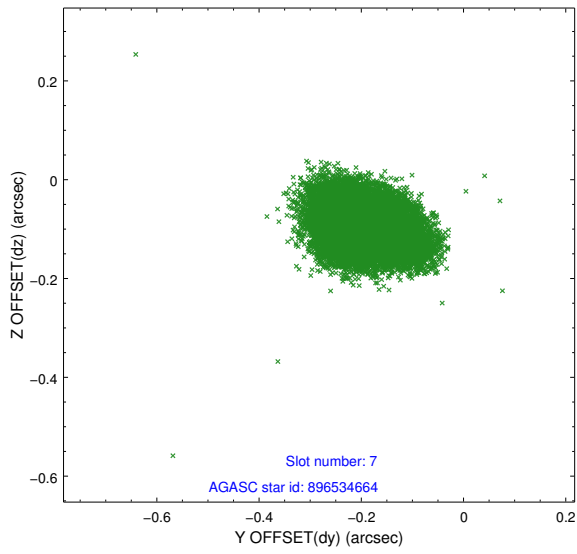
2.4.3 Slot 5



2.4.4 Slot 6

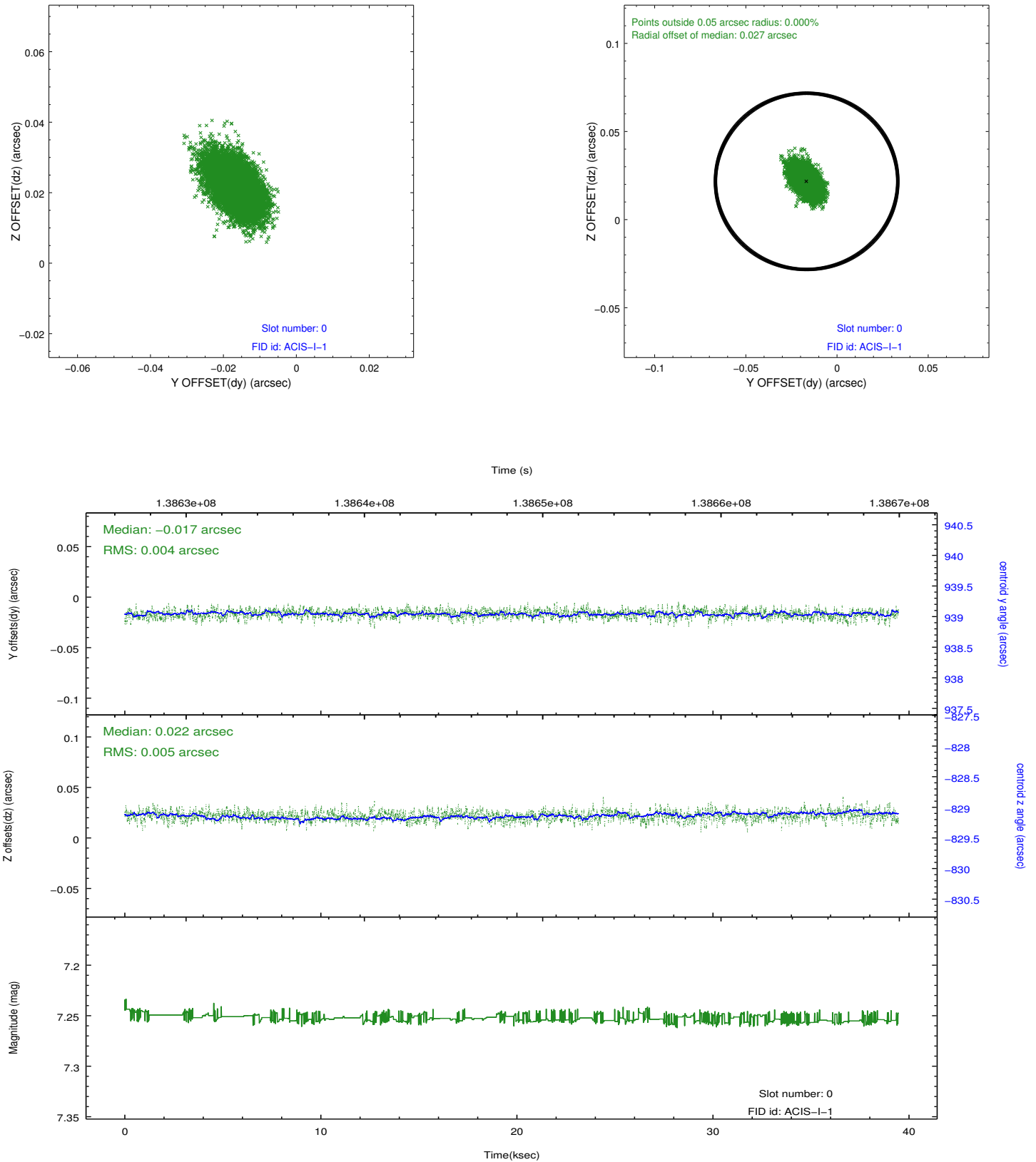


2.4.5 Slot 7

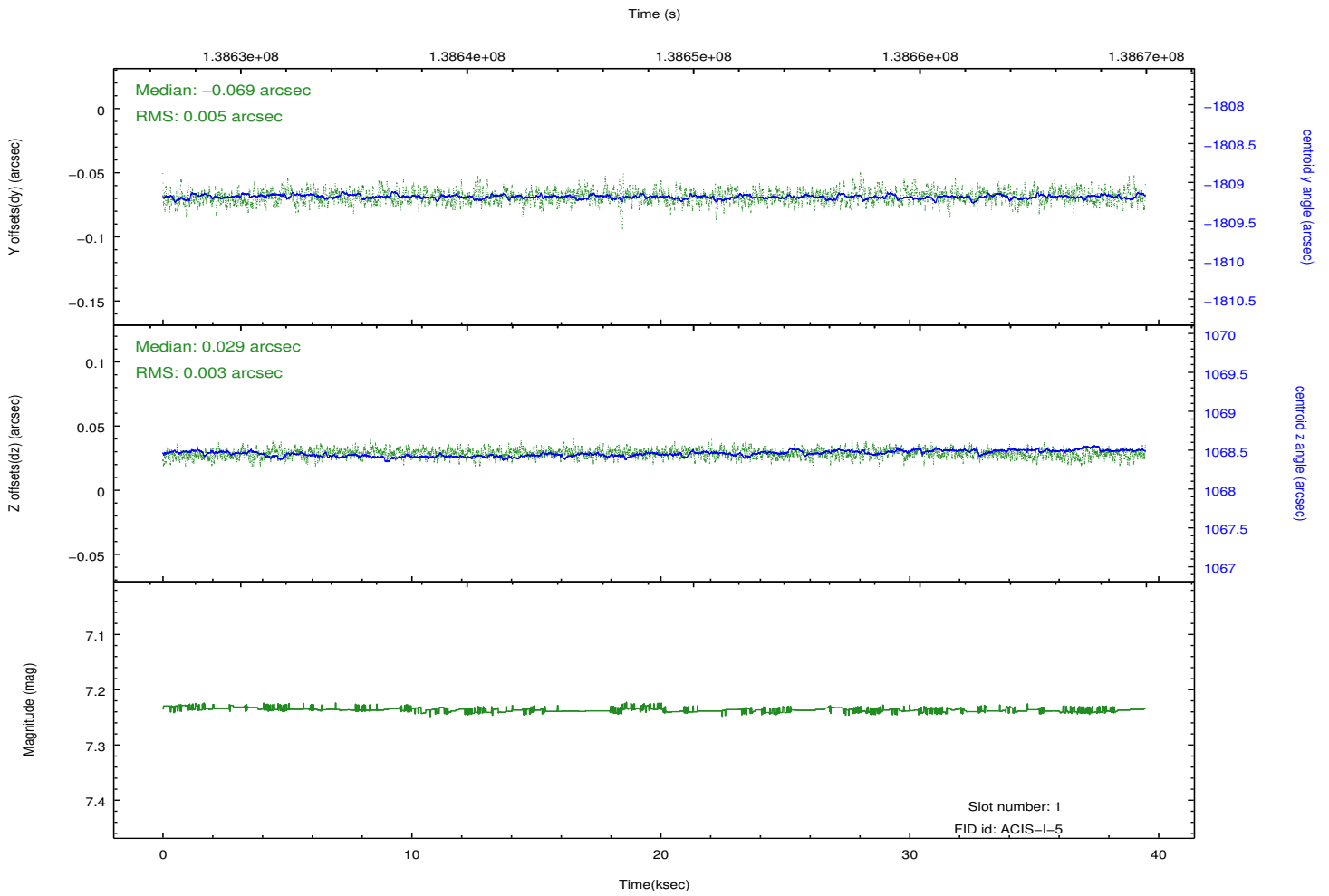
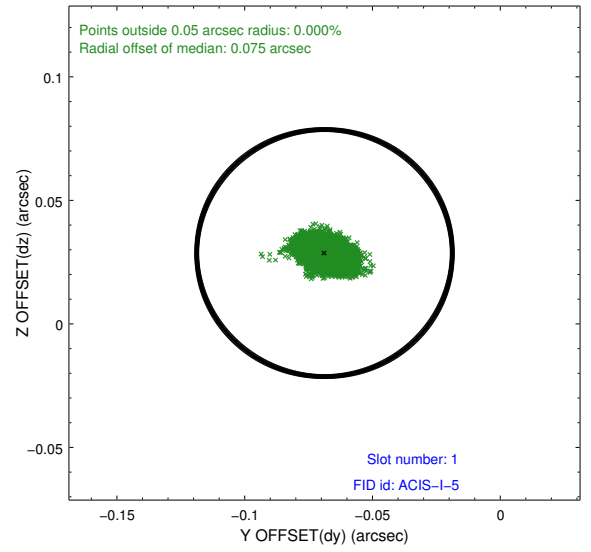
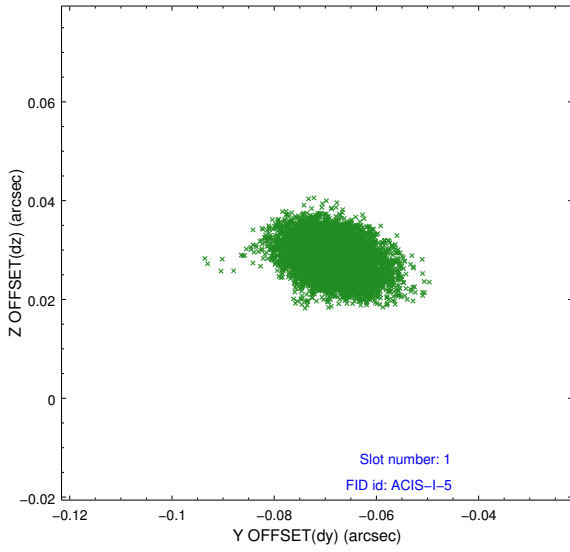


2.5 FID Slots

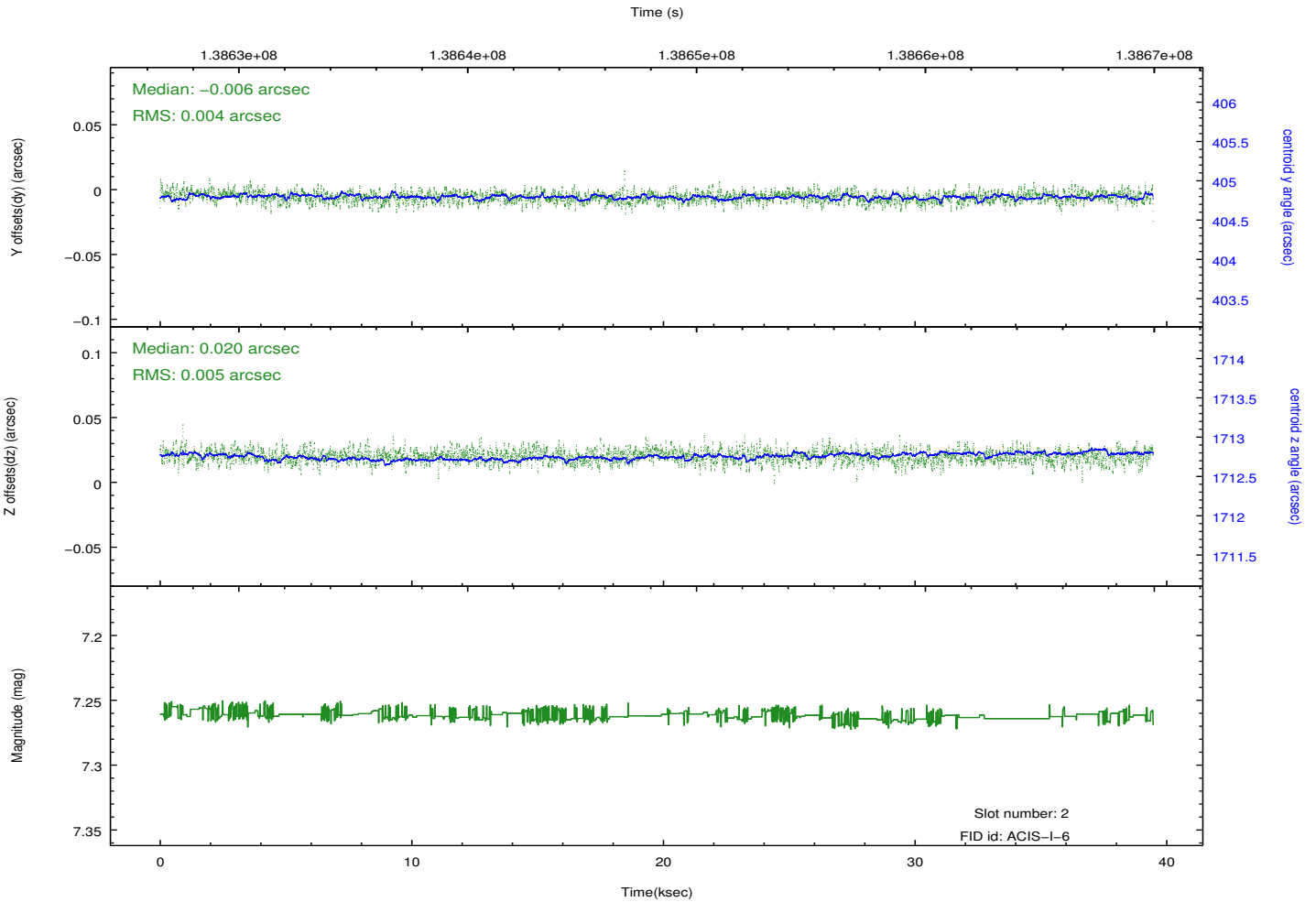
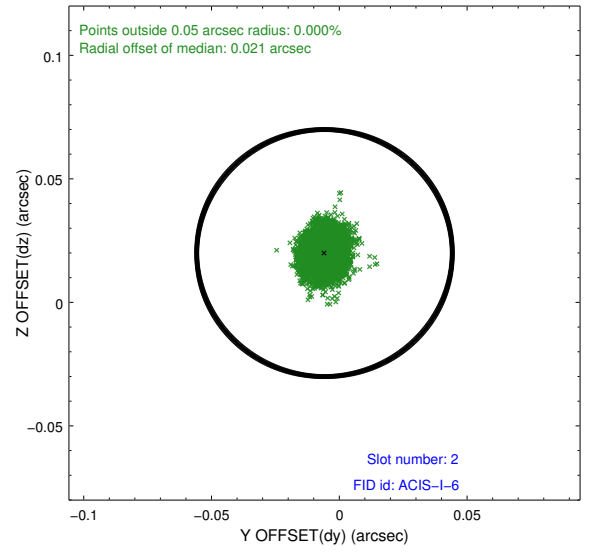
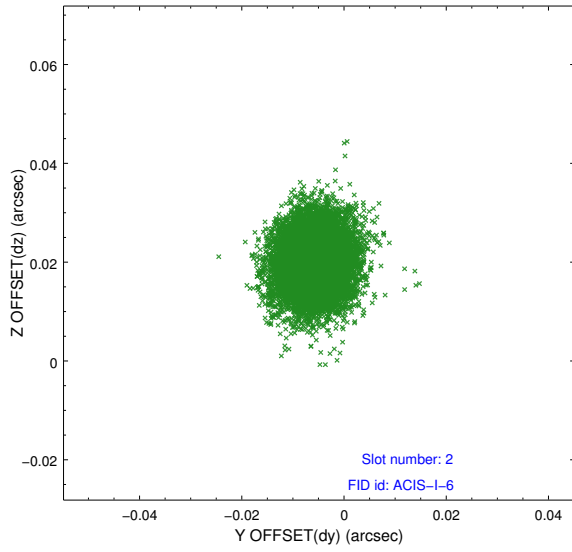
2.5.1 Slot 0



2.5.2 Slot 1



2.5.3 Slot 2



A Summary

A.1 Status

V&V Scientist	Jen Lauer
V&V Date (YYYY-MM-DD)	2012.10.18
V&V Edition	1
V&V Disposition and Status	OK
V&V Charge Time	38.461

A.2 Comments

Observation extends ~2 hours past the window constraint stop time.
Observation falls in 2nd half of window stop request = 21:17, actual = 22:58
start request = 01:50:04, actual = 11:50:13. difference deemed acceptable