

V&V Reference Report

L2 ASCDS Version : 8.4.5

Observation 3693 - L2 Version 3
Chandra X-Ray Center

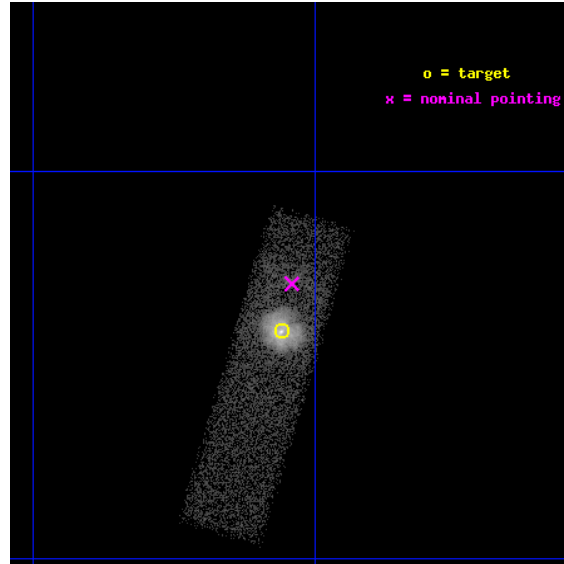
L2 Processing Date : Oct 28 2012

Contents

1	Front	2
2	OBI	3
2.1	OBI	3
2.1.1	Images	3
2.1.2	Bias	3
2.1.3	Parameters	4
2.1.4	Events	4
2.2	Compared Parameters	5
2.3	Aspect	6
2.4	Star Slots	9
2.4.1	Slot 3	9
2.4.2	Slot 4	10
2.4.3	Slot 5	11
2.4.4	Slot 6	12
2.4.5	Slot 7	13
2.5	FID Slots	14
2.5.1	Slot 0	14
2.5.2	Slot 1	15
2.5.3	Slot 2	16
A	Summary	17
A.1	Status	17
A.2	Comments	17

1 Front

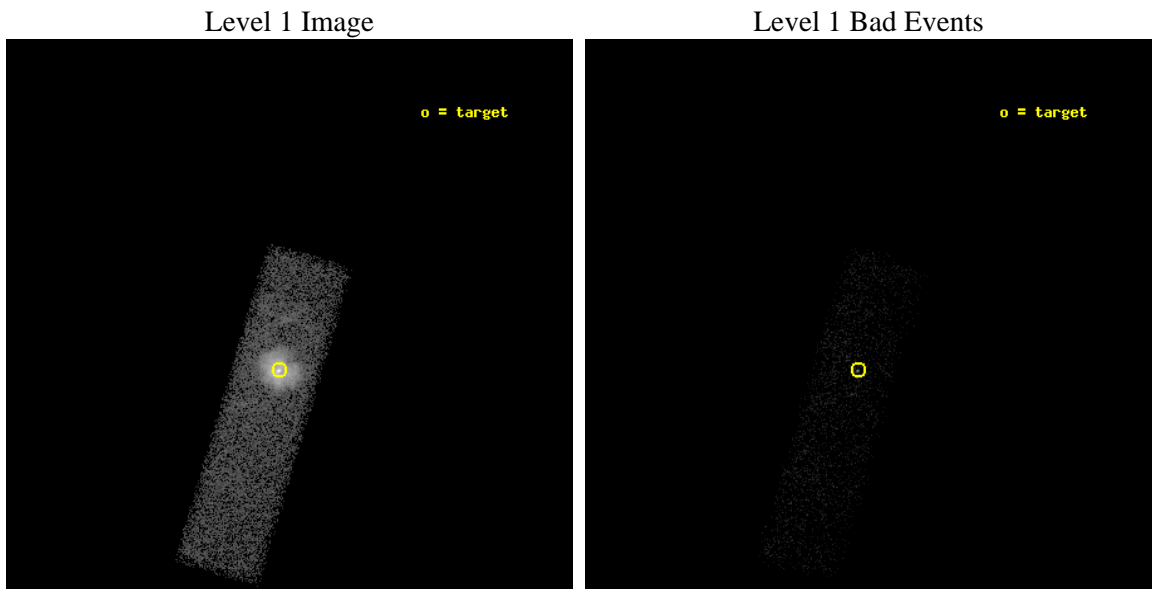
seq_num	590305	Sequence number
obs_id	3693	Observation id
title	AO4A OBSERVATIONS OF THE STANDARD CANDLES CAS A AND G21.5-09	Propo
observer	Dr. CXC Calibration	Principal investigator
object	G21.5-0.9[Chip S3, T=120, Offsets=-1.0,0,0]	Source name
dtcycle	0	
cycle	P	events from which exps? Prim/Second/Both
ra_targ	278.389583	Observer's specified target RA [deg]
dec_targ	-10.568528	Observer's specified target Dec [deg]
ra_nom	278.38519332802	Nominal RA [deg]
dec_nom	-10.548258901879	Nominal Dec [deg]
roll_nom	106.66504064028	Nominal Roll [deg]
revision	3	Processing version of data
ontime	10285.477063239	Sum of GTIs [s]
livetime	9783.5794380659	Livetime [s]
ontime7	10285.477063239	Sum of GTIs [s]
l2events	44248	Number of level 2 events



2 OBI

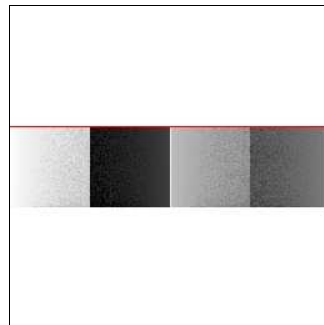
2.1 OBI

2.1.1 Images



2.1.2 Bias

Chip 7



2.1.3 Parameters

obi_num	1	Obi number	sched_exp_time	9459.400000	[s] Scheduled observation exposure time
ascdsver	8.4.5	Processing system revision	ontime	10285.477063239	Sum of GTIs [s]
caldbver	4.5.2	 	ontime7	10285.477063239	Sum of GTIs [s]
date	2012-10-28T13:26:16	Date and time of file creation	l1events	56968	Number of level 1 events
revision	3	Processing version of data			

2.1.4 Events

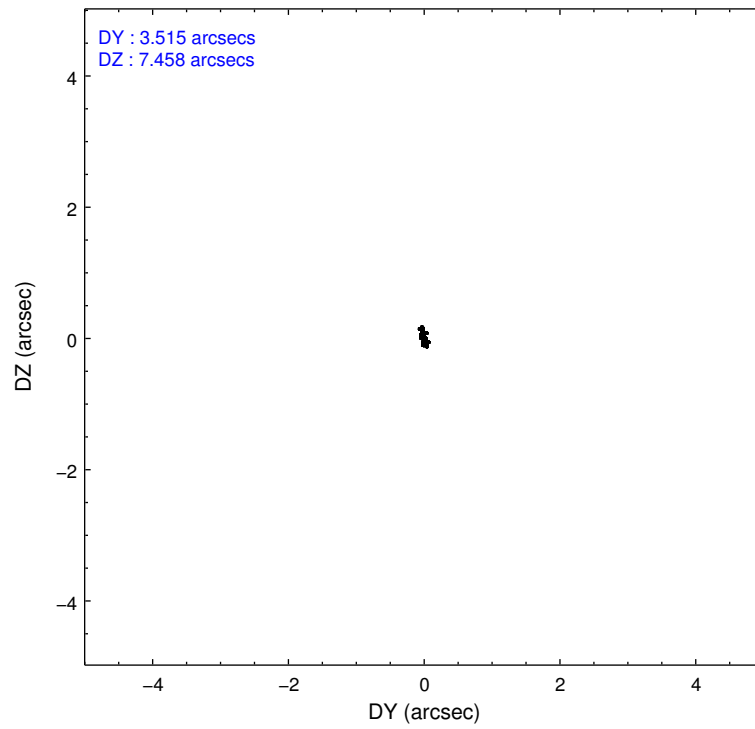
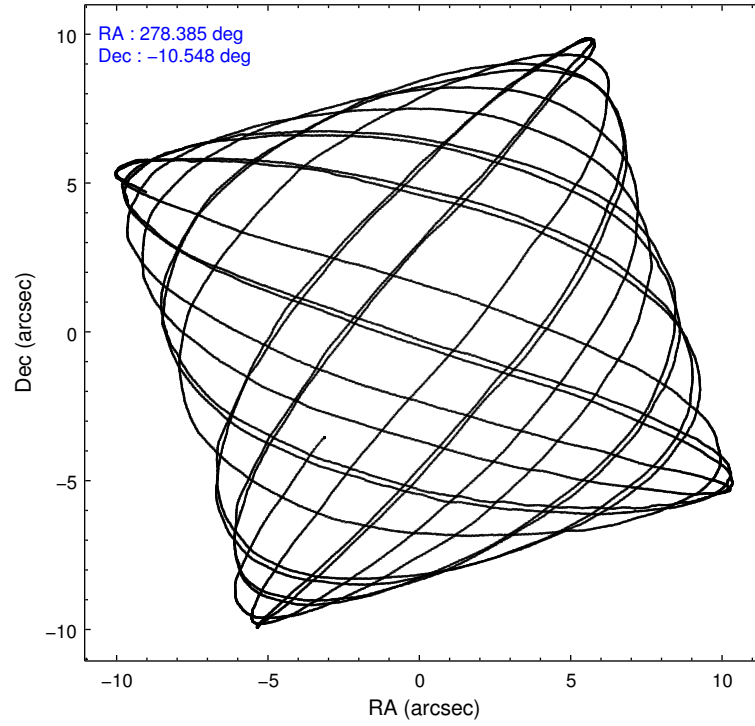
	ccd 7
level 1 events	56968
rejected events	12345
rejected %	21%

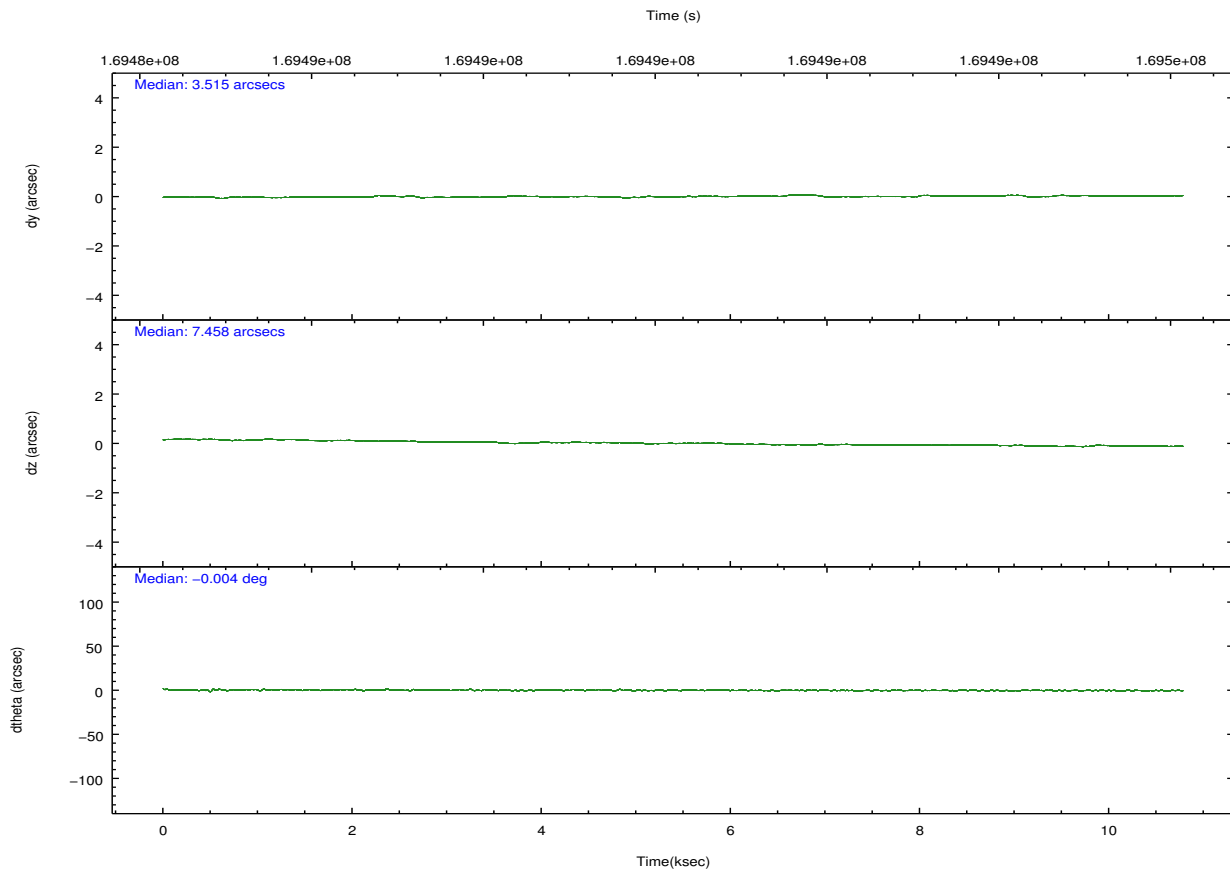
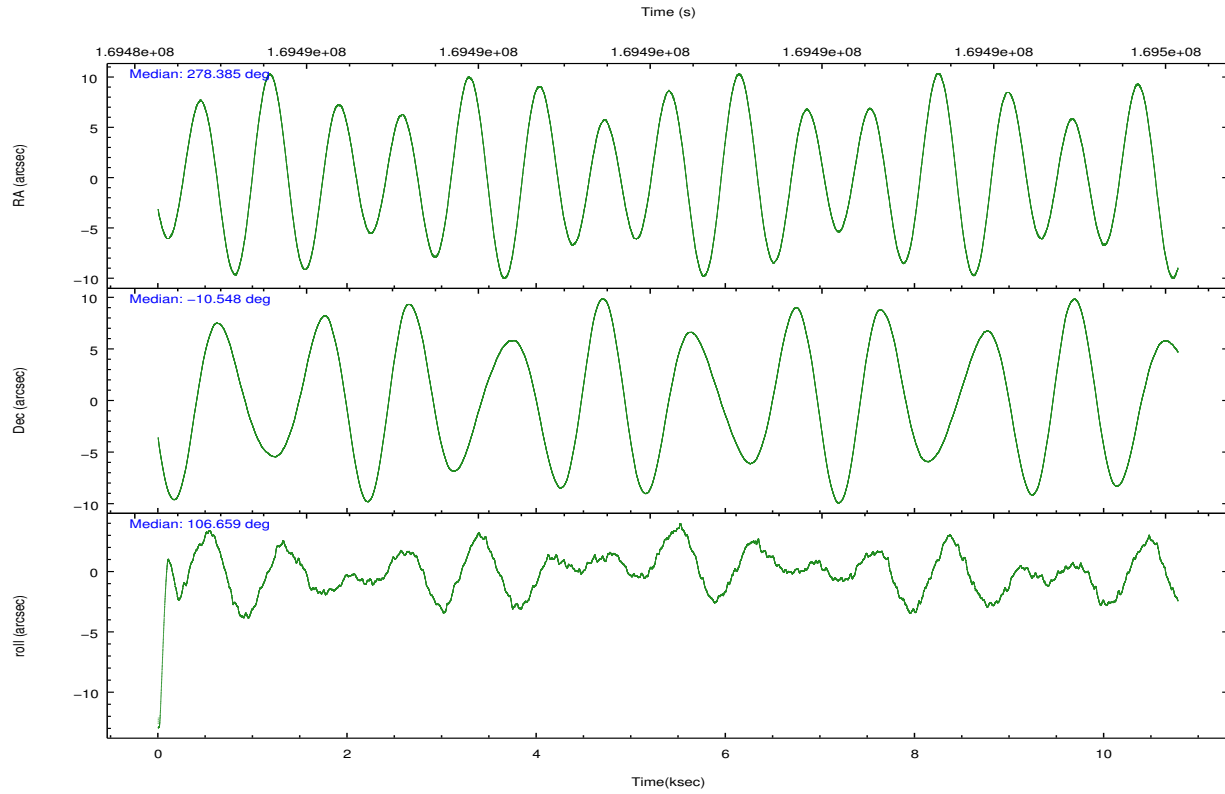
	ccd 7
grade 0 events	8805
	15%
grade 1 events	60
	0%
grade 2 events	10577
	18%
grade 3 events	5122
	8%
grade 4 events	5029
	8%
grade 5 events	2244
	3%
grade 6 events	15095
	26%
grade 7 events	10036
	17%

2.2 Compared Parameters

Parameter	Planned	Actual	Parameter	Planned	Actual
Instrument	ACIS	ACIS	Obspar format version number	7	7
Detector	ACIS-7	ACIS-7	Obspar file type	PREDICTED	ACTUAL
Grating	NONE	NONE	Obspar update status	NONE	UPDATED
Data mode	VFAINT	VFAINT	Number of optional ACIS chips dropped	0	0
Observation mode	POINTING	POINTING	On-chip summing requested	N	N
[deg] Pointing RA	278.405638	278.3851933280217	Subarray requested	CUSTOM	1/4
[deg] Pointing Dec	-10.566627	-10.54825890187915	Subarray start row	384	384
[deg] Pointing Roll	106.512153	106.6650406402754	Subarray row count	256	256
[s] Window start time (MET)	168134464.184000	168134464.184000	Alternating exposures requested	N	N
[s] Window stop time (MET)	170640064.184000	170640064.184000	[s] Primary exposure time	0.000000	0.8
[mm] SIM focus pos	-0.684267	-0.6828225247311905			
[mm] SIM defocus	0	0.001444936568705701			
[mm] SIM translation stage pos	-190.132523	-190.1425803651734			
[mm] SIM translation stage offset	0	0.01005778216563158			
[s] Observation start time (MET)	169486143.184000	169484611.66046			
Observation start date	2003-05-16T15:27:59	2003-05-16T15:03:31			
[s] Observation end time (MET)	169495603.184000	169495917.41093			
Observation end date	2003-05-16T18:05:39	2003-05-16T18:11:57			
Read mode	TIMED	TIMED			

2.3 Aspect



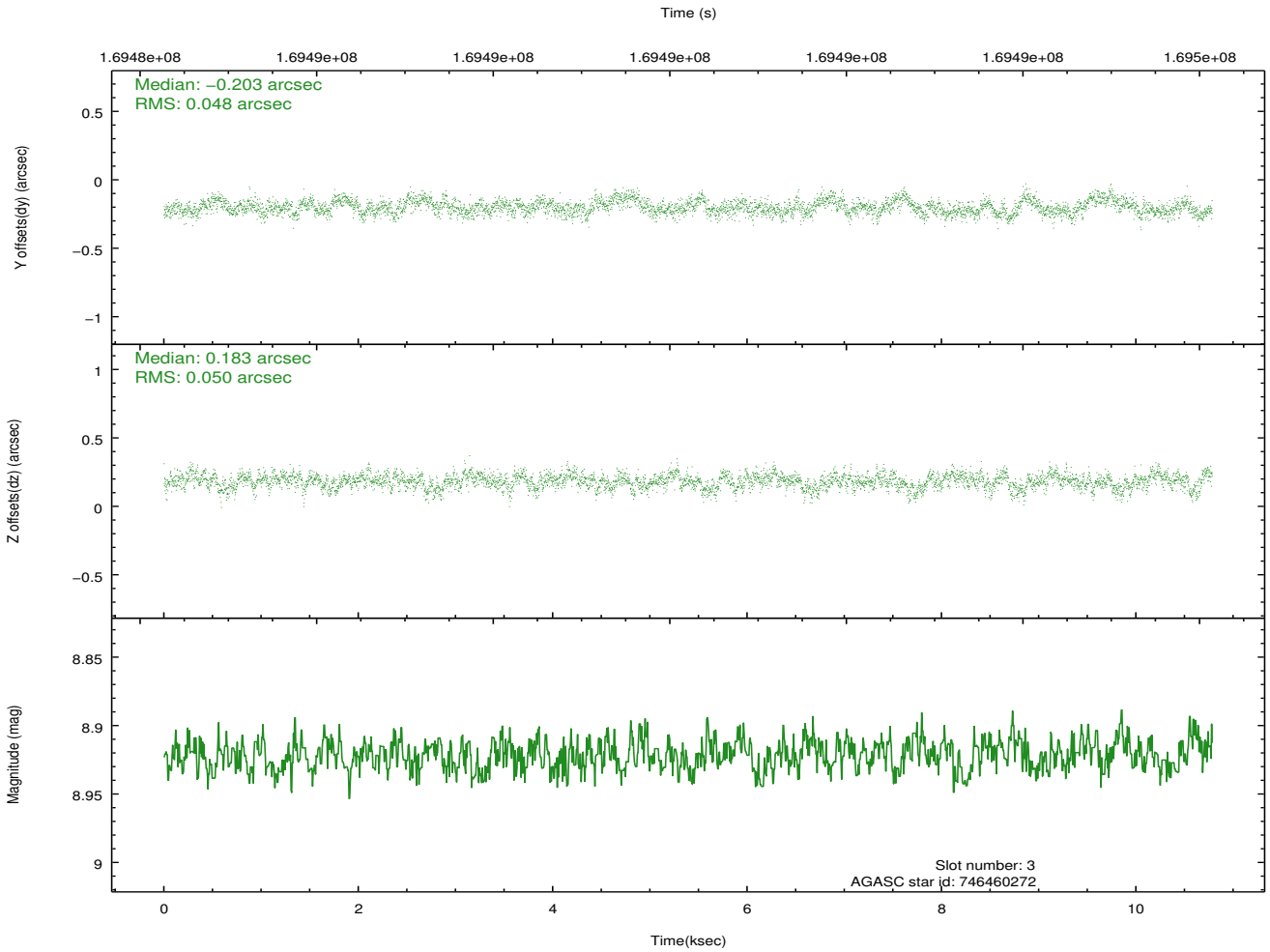
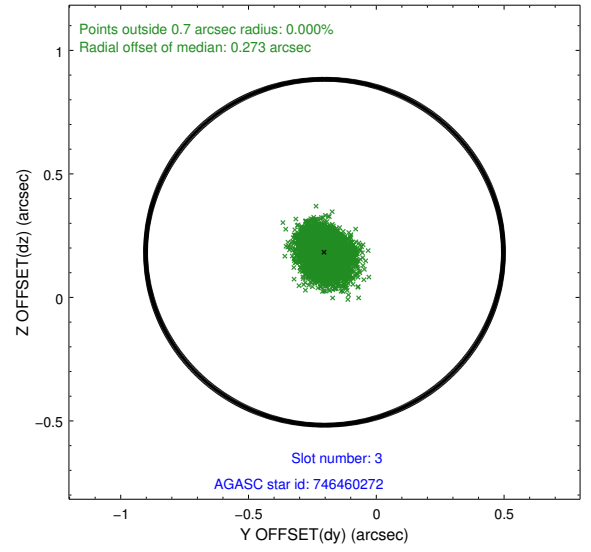
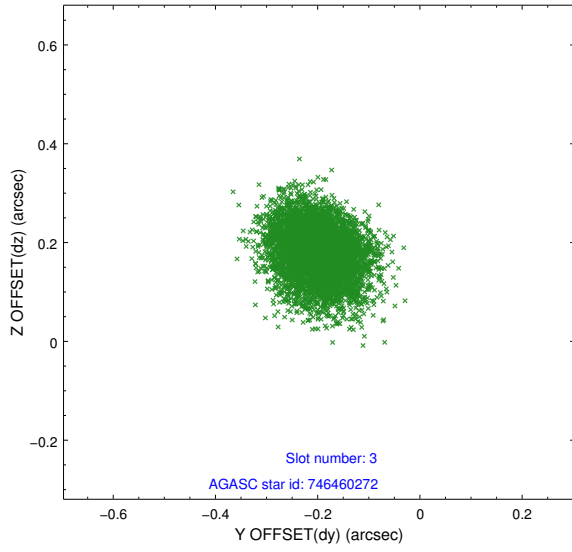


Slot Statistics

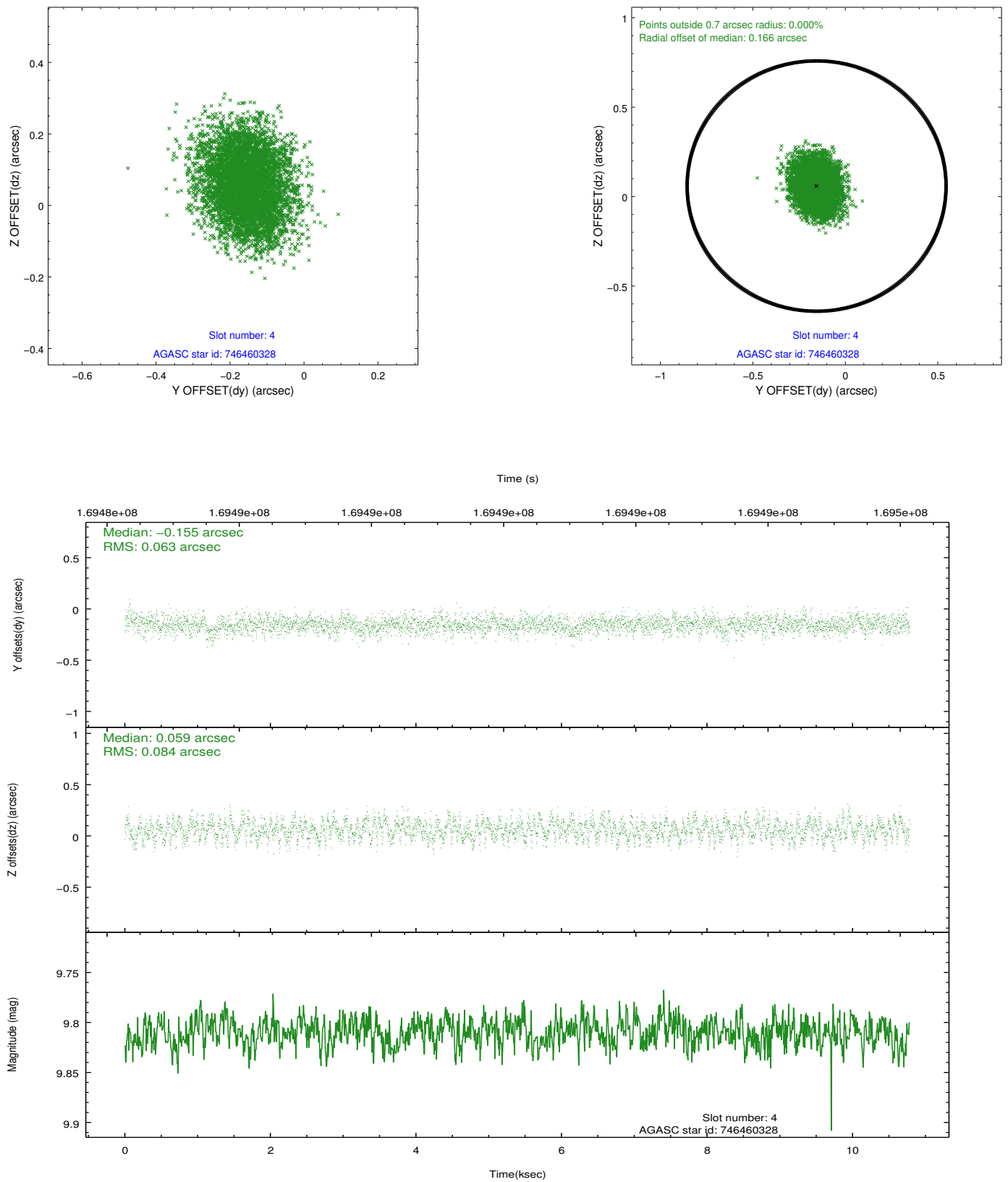
slot	status	id	mag	n_pts	med_dy	med_dz	dr1	dr2	ra	dec	mean_y	mean_z
0	FID	ACIS-S-2	7.11	2628	-0.013	-0.007	0.006	0.011	0.000000	0.000000	-756.19	-1728.60
1	FID	ACIS-S-4	7.21	2628	0.019	0.008	0.005	0.010	0.000000	0.000000	2156.91	179.40
2	FID	ACIS-S-5	7.24	2628	-0.037	0.008	0.006	0.010	0.000000	0.000000	-1808.43	173.63
3	GUIDE	746460272	8.92	5258	-0.203	0.183	0.075	0.121	278.847488	-10.152127	984.99	-1924.59
4	GUIDE	746460328	9.81	5256	-0.155	0.059	0.114	0.179	278.603974	-9.898096	2107.65	-1358.24
5	GUIDE	746462392	8.53	5257	0.085	0.043	0.071	0.110	279.038421	-10.890715	-1756.34	-1813.04
6	GUIDE	746462456	8.39	5256	0.056	-0.024	0.075	0.115	278.652171	-10.530173	-122.79	-874.01
7	GUIDE	746995400	9.50	5257	0.212	-0.257	0.098	0.161	278.078957	-11.289885	-2168.85	1845.51

2.4 Star Slots

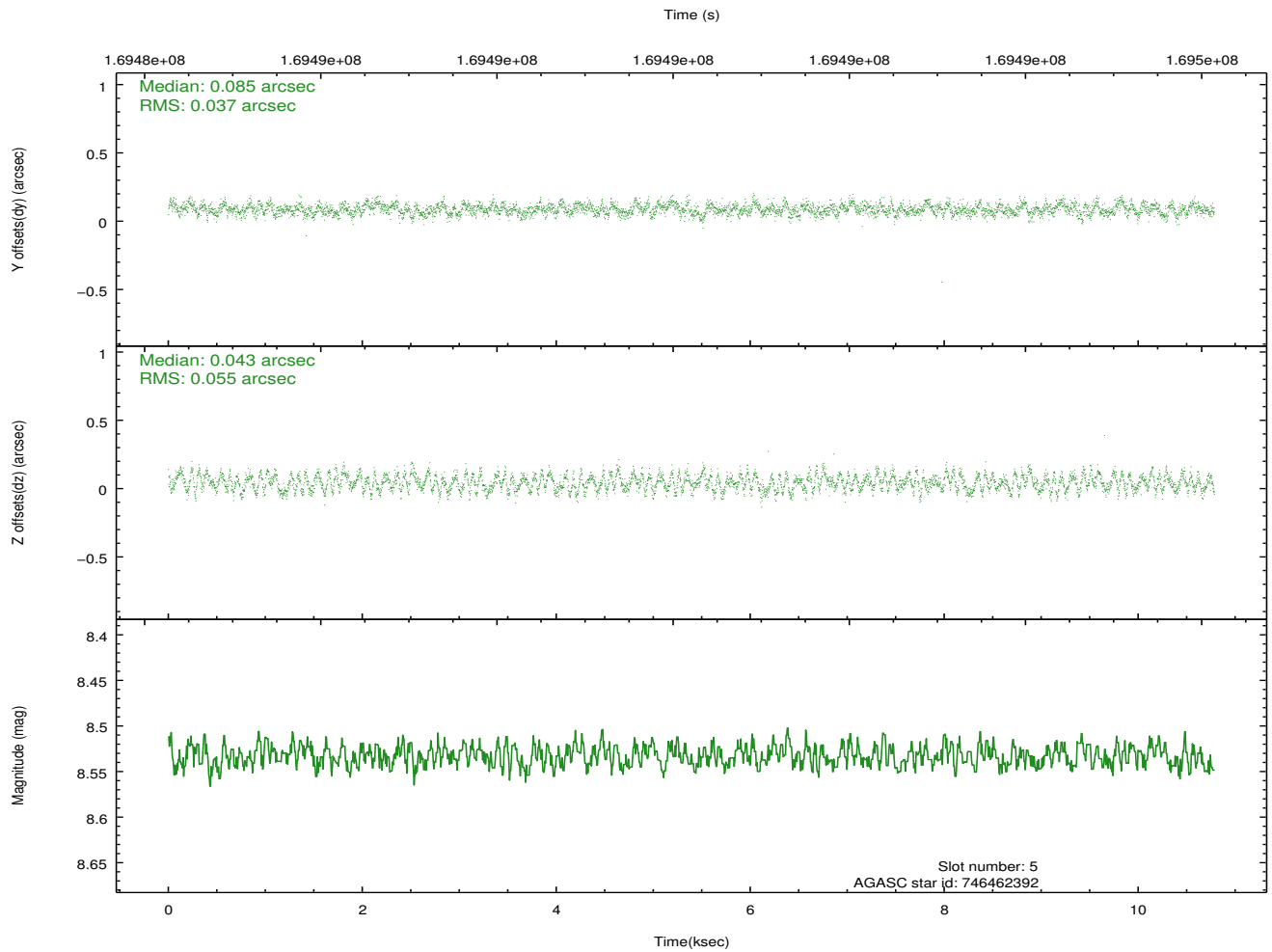
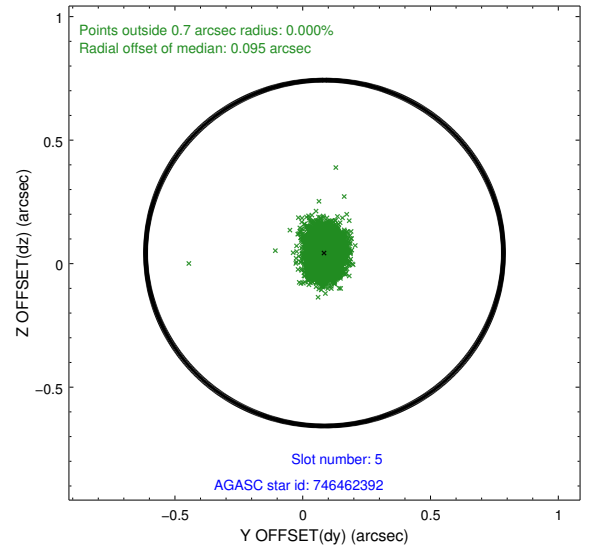
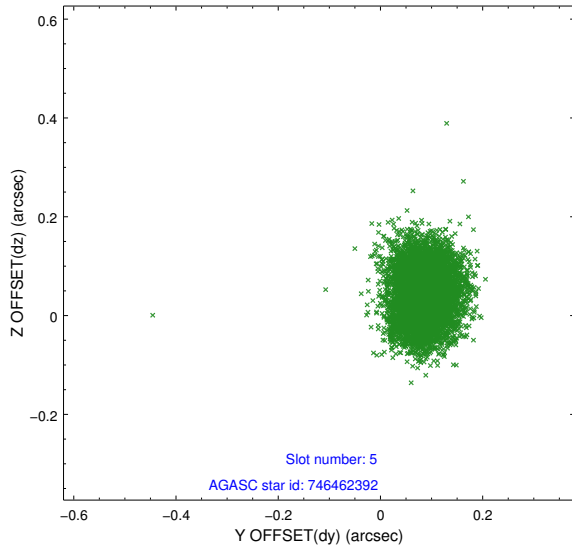
2.4.1 Slot 3



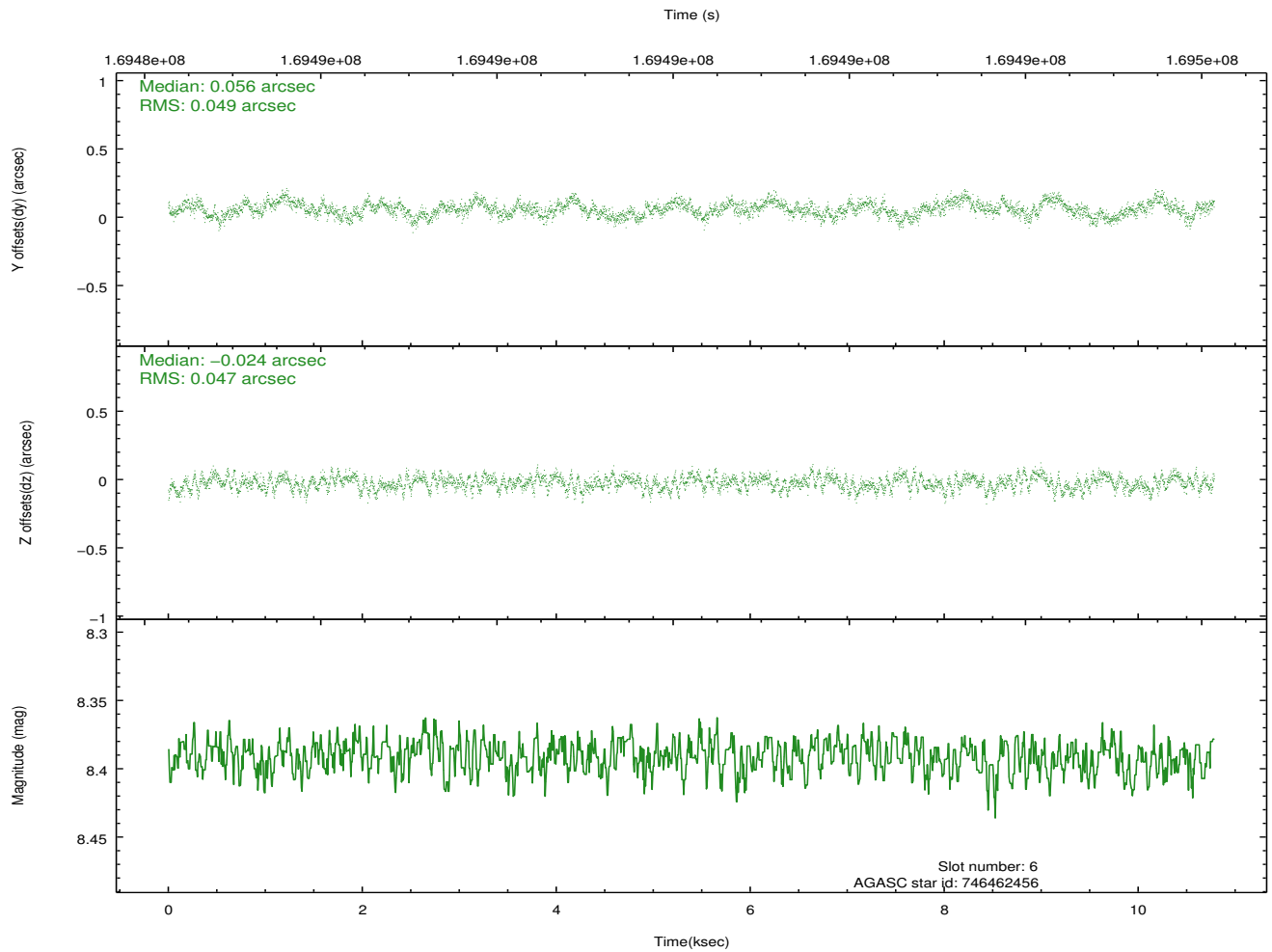
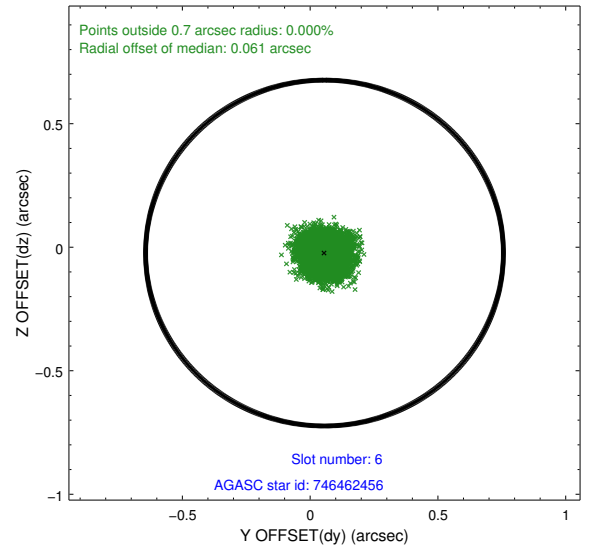
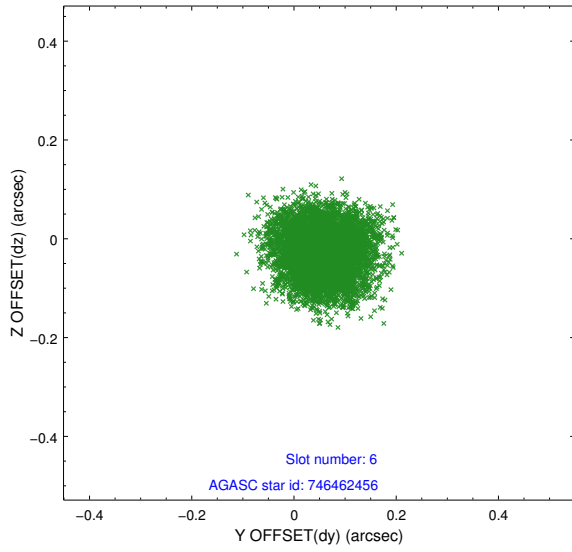
2.4.2 Slot 4



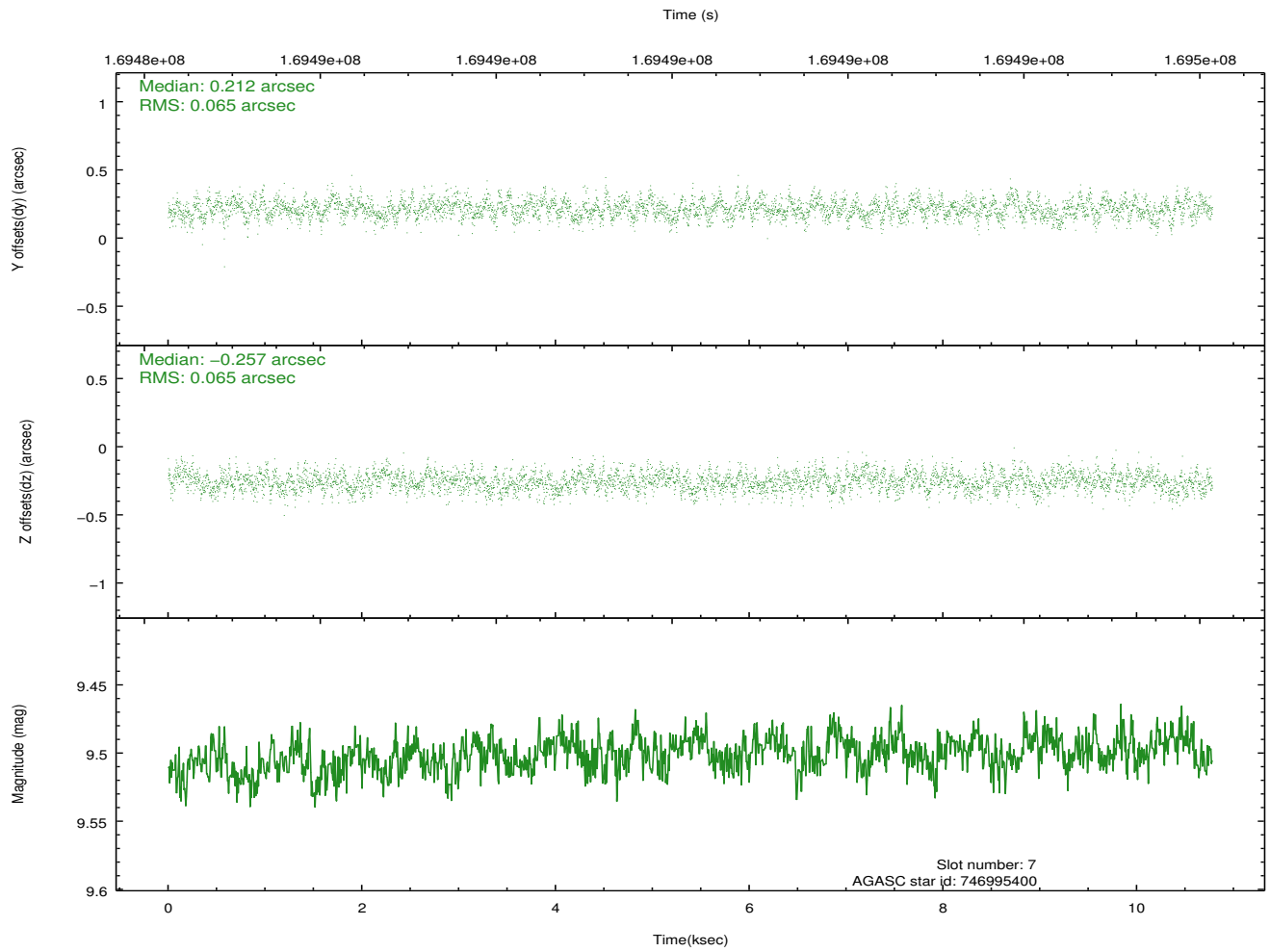
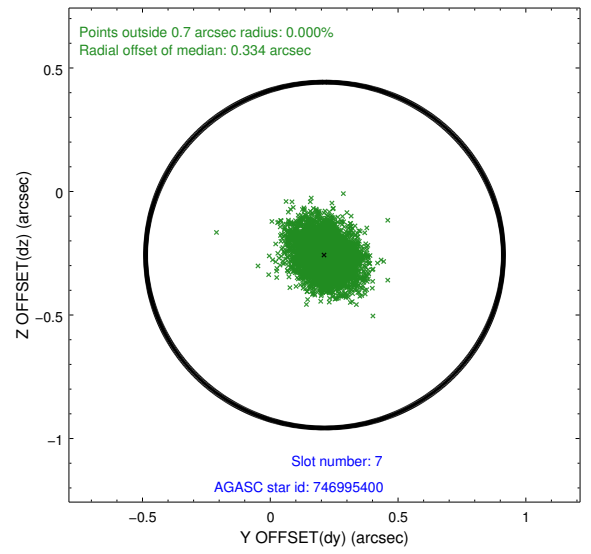
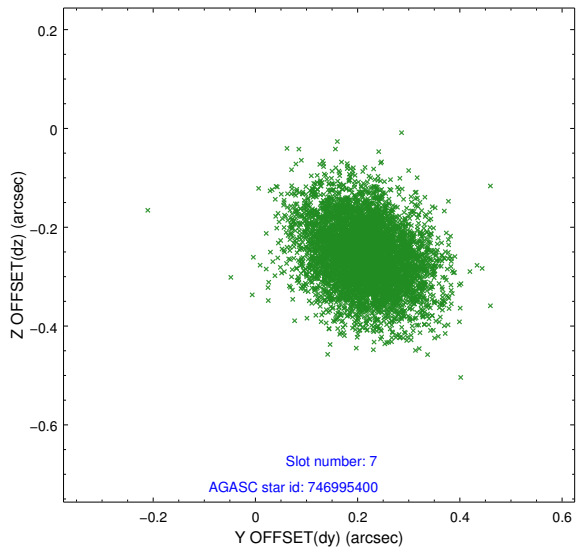
2.4.3 Slot 5



2.4.4 Slot 6

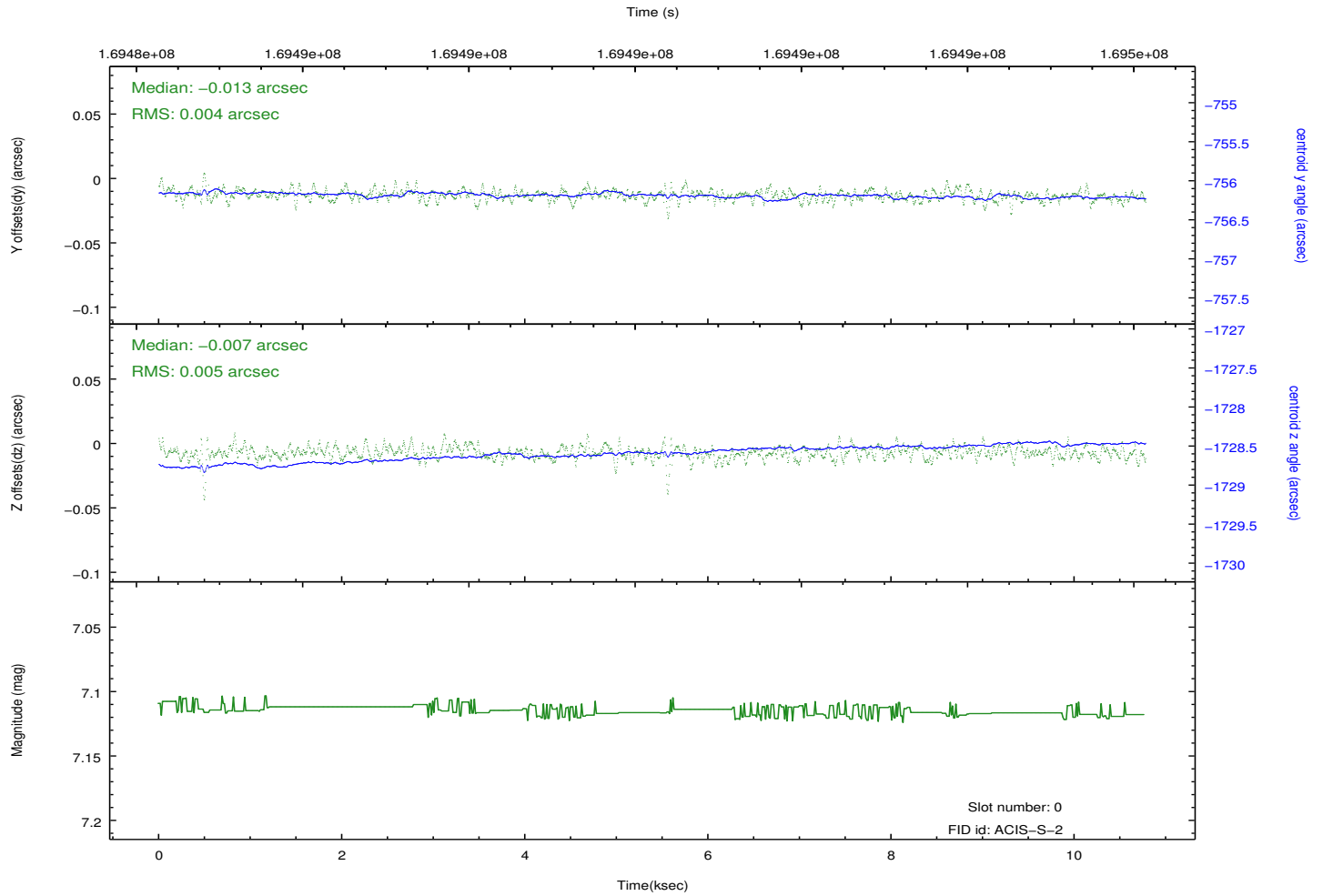
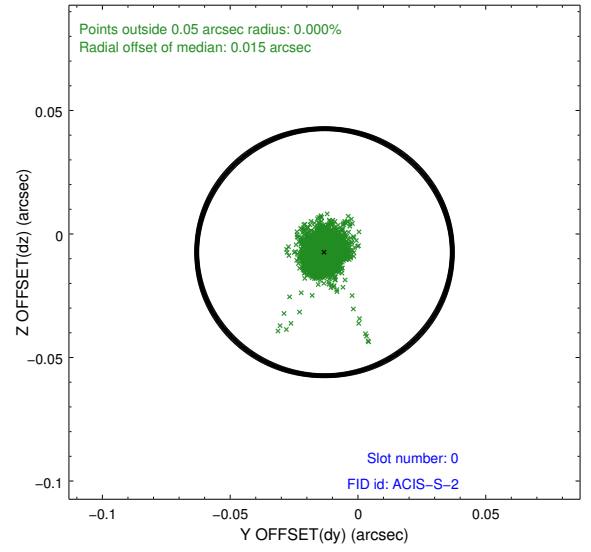
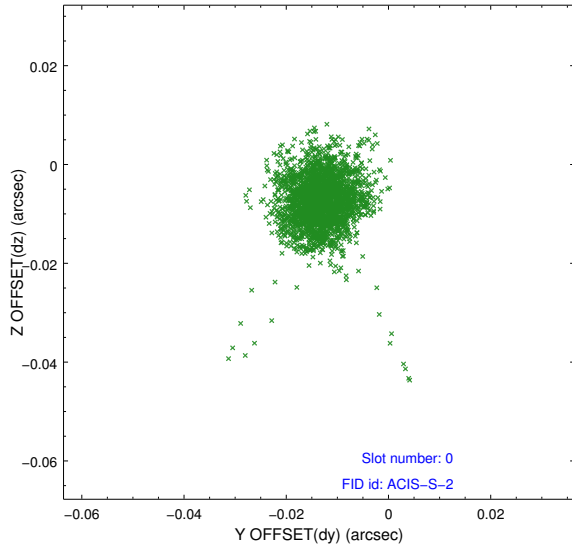


2.4.5 Slot 7

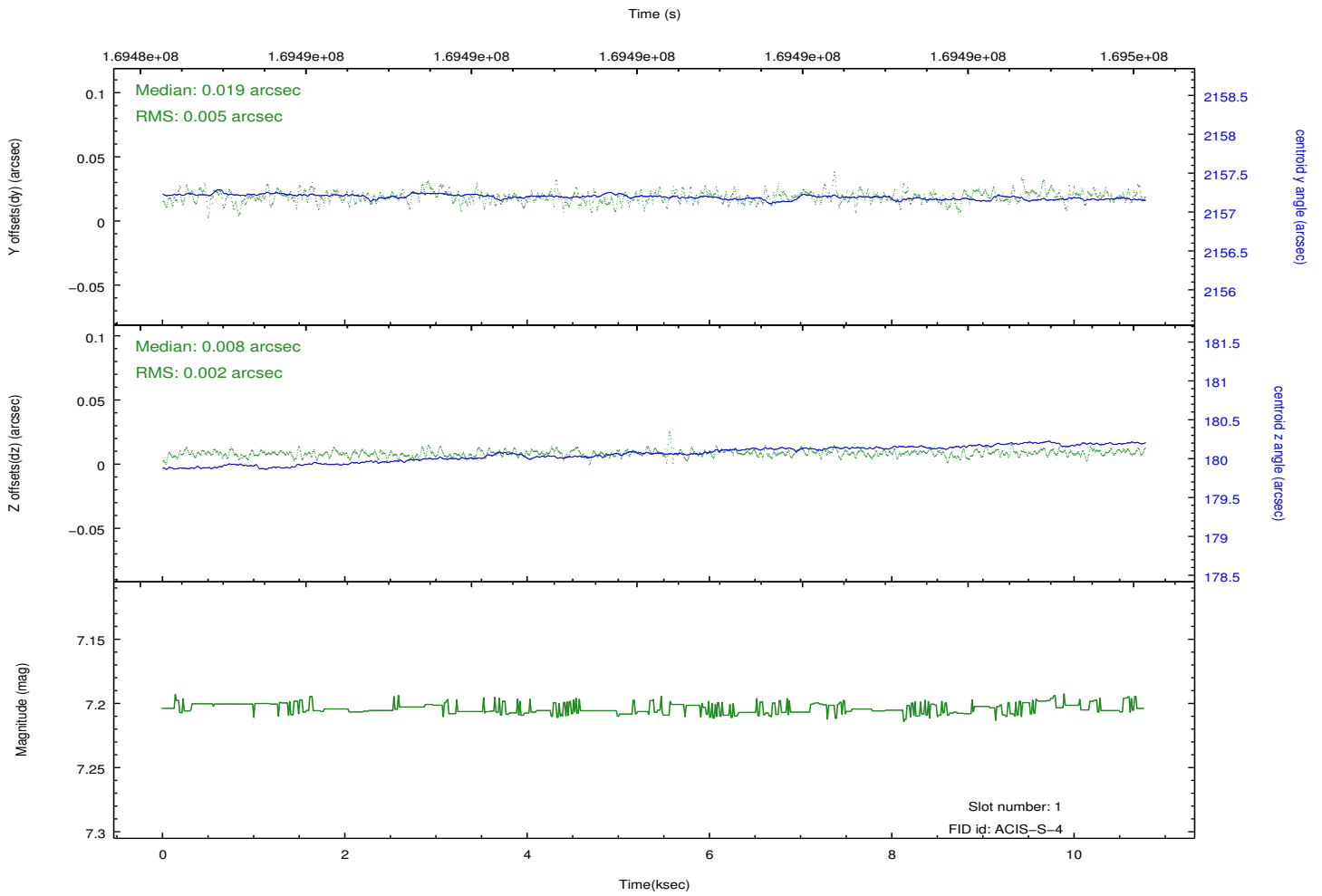
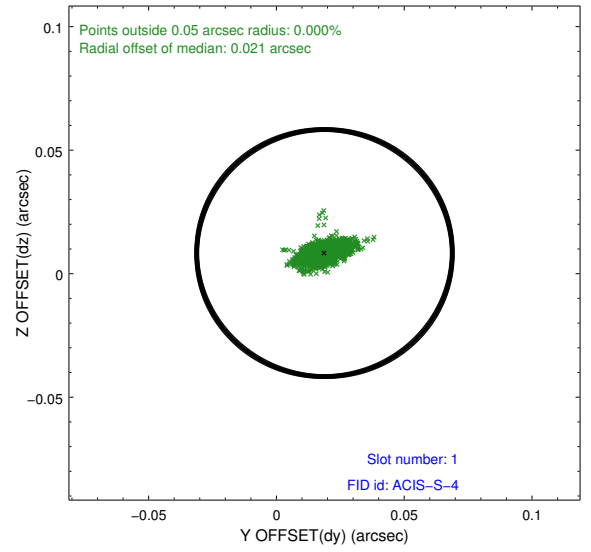
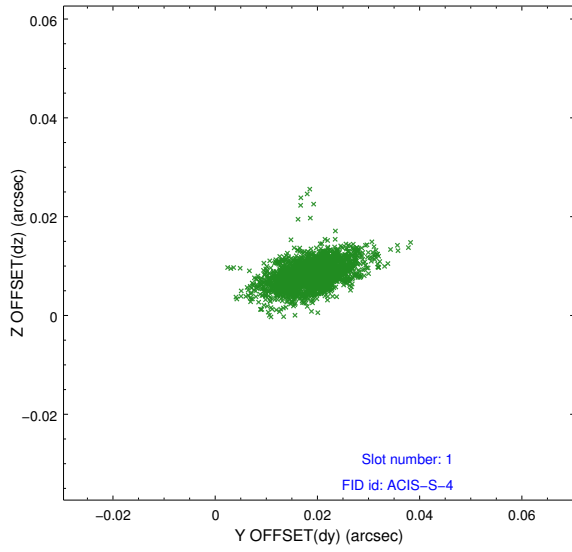


2.5 FID Slots

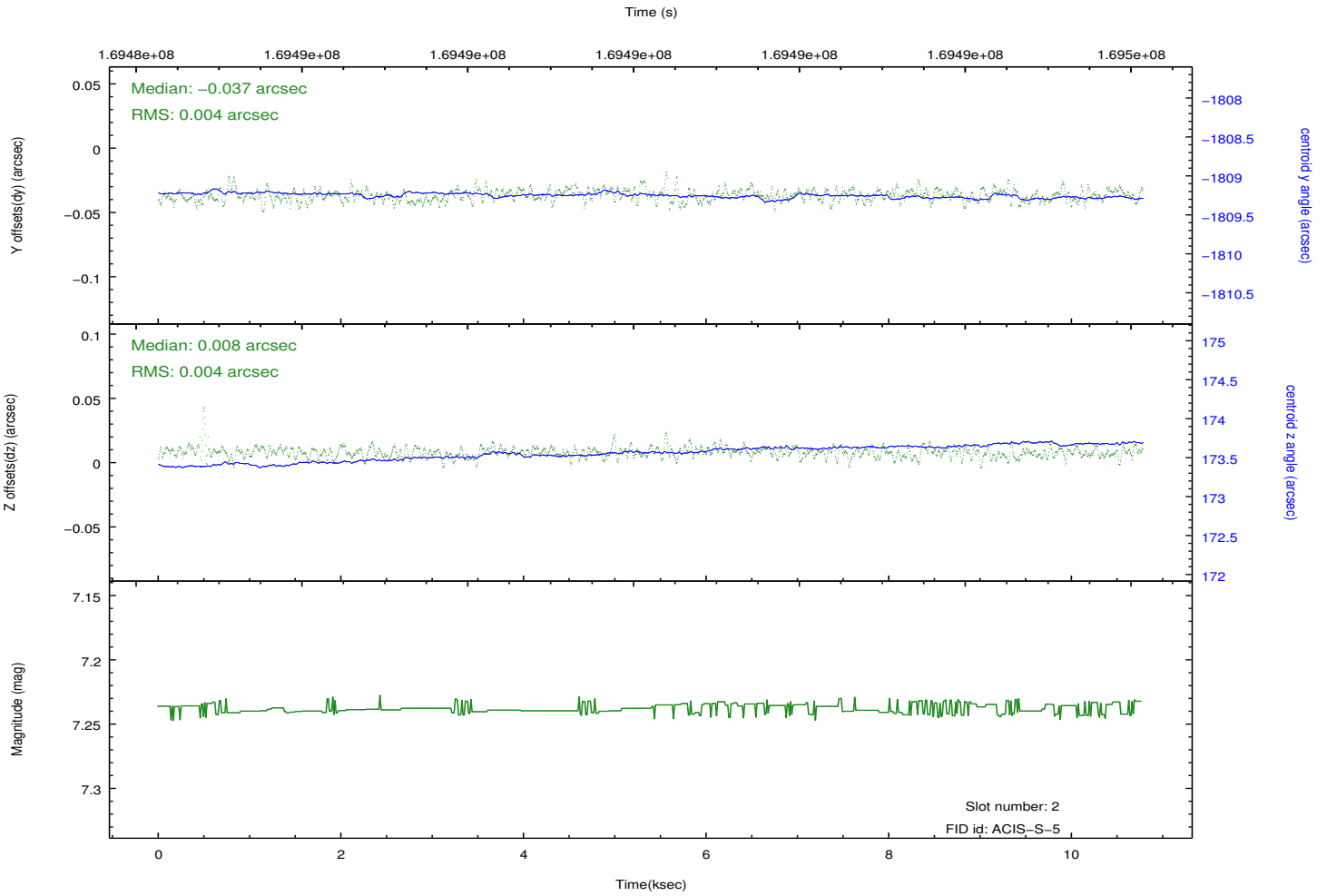
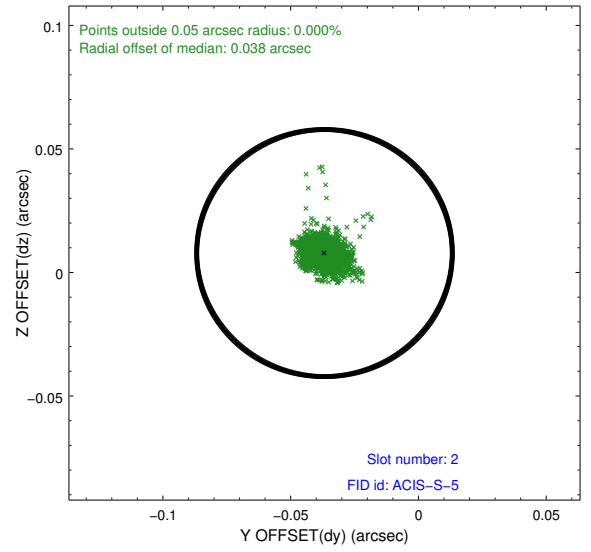
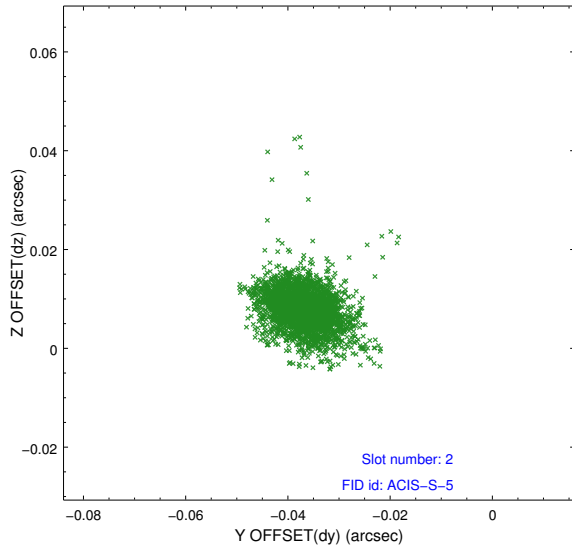
2.5.1 Slot 0



2.5.2 Slot 1



2.5.3 Slot 2



A Summary

A.1 Status

V&V Scientist	Jen Lauer
V&V Date (YYYY-MM-DD)	2012.12.06
V&V Edition	1
V&V Disposition and Status	OK
V&V Charge Time	10.286

A.2 Comments

Window constraint met.