

V&V Reference Report

L2 ASCDS Version : 8.4.5

Observation 3733 - L2 Version 3
Chandra X-Ray Center

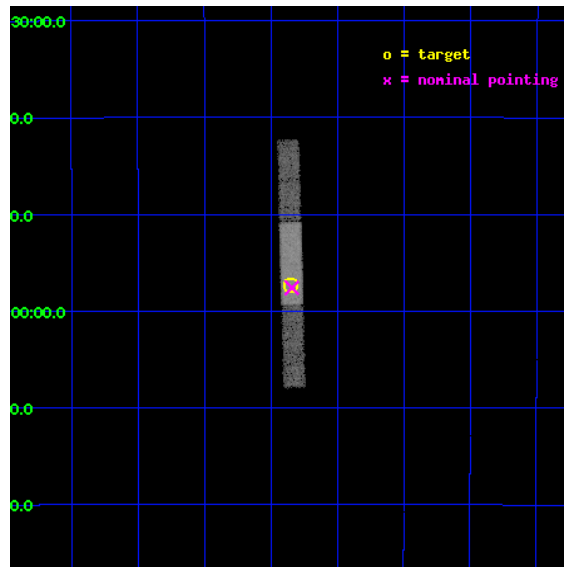
L2 Processing Date : Nov 3 2012

Contents

| | | |
|----------|-------------------------------|-----------|
| 1 | Front | 2 |
| 2 | OBI | 3 |
| 2.1 | OBI | 3 |
| 2.1.1 | Images | 3 |
| 2.1.2 | Bias | 3 |
| 2.1.3 | Parameters | 4 |
| 2.1.4 | Events | 4 |
| 2.2 | Compared Parameters | 5 |
| 2.3 | Aspect | 6 |
| 2.4 | Star Slots | 9 |
| 2.4.1 | Slot 3 | 9 |
| 2.4.2 | Slot 4 | 10 |
| 2.4.3 | Slot 5 | 11 |
| 2.4.4 | Slot 6 | 12 |
| 2.4.5 | Slot 7 | 13 |
| 2.5 | FID Slots | 14 |
| 2.5.1 | Slot 0 | 14 |
| 2.5.2 | Slot 1 | 15 |
| 2.5.3 | Slot 2 | 16 |
| A | Summary | 17 |
| A.1 | Status | 17 |
| A.2 | Comments | 17 |

1 Front

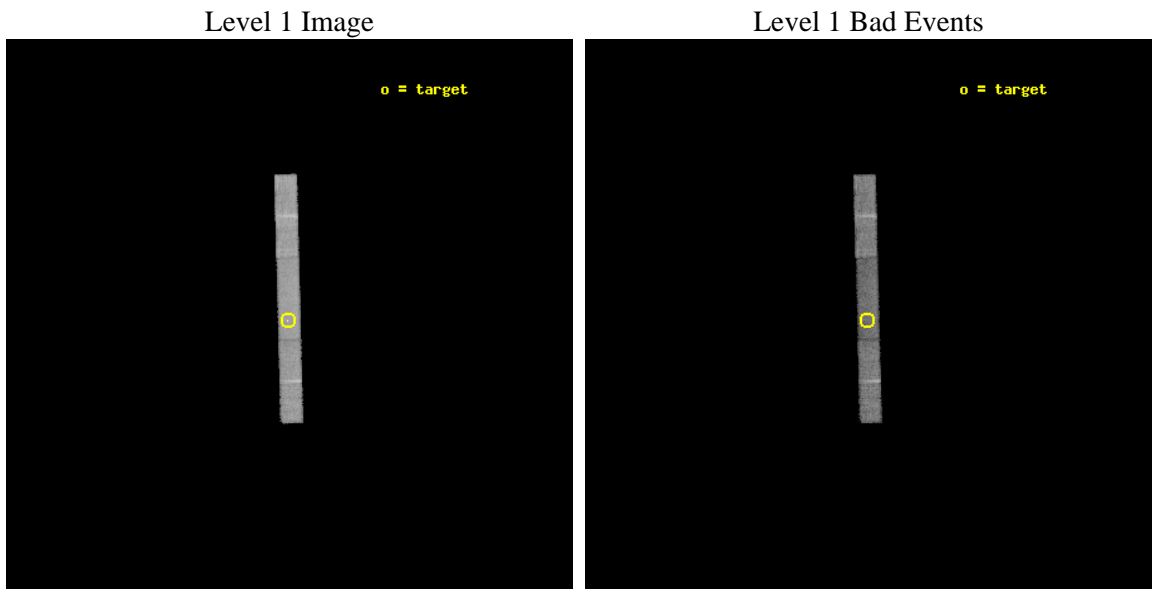
| | | |
|----------|---------------------------------------|---|
| seq_num | 200203 | Sequence number |
| obs_id | 3733 | Observation id |
| title | IMAGING THE JET FROM A HERBIG AE STAR | Proposal title |
| observer | Douglas Swartz | Principal investigator |
| object | HD 163296 | Source name |
| dtcycle | 0 | |
| cycle | P | events from which exps? Prim/Second/Both |
| ra_targ | 269.0875 | Observer's specified target RA [deg] |
| dec_targ | -21.956111 | Observer's specified target Dec [deg] |
| ra_nom | 269.08556165884 | Nominal RA [deg] |
| dec_nom | -21.960101289974 | Nominal Dec [deg] |
| roll_nom | 268.5206729338 | Nominal Roll [deg] |
| revision | 3 | Processing version of data |
| ontime | 20138.400133342 | Sum of GTIs [s] |
| livetime | 19260.137847496 | Livetime [s] |
| ontime6 | 20138.400133342 | Sum of GTIs [s] |
| ontime7 | 20138.400133342 | Sum of GTIs [s] |
| ontime8 | 20138.400133342 | Sum of GTIs [s] |
| l2events | 27769 | Number of level 2 events |



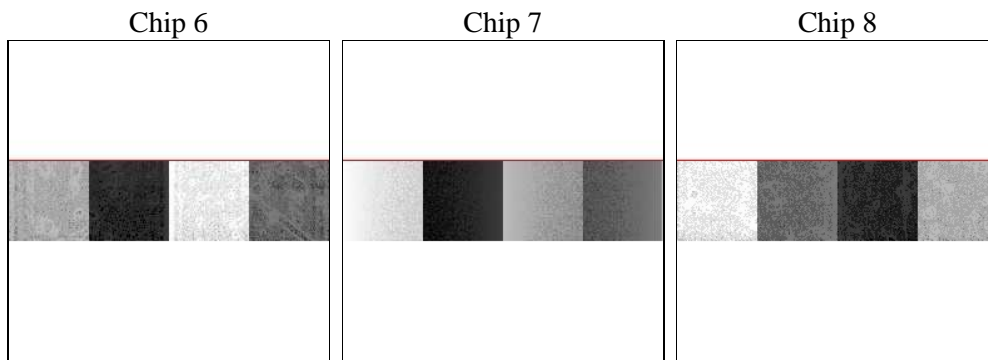
2 OBI

2.1 OBI

2.1.1 Images



2.1.2 Bias



2.1.3 Parameters

| | | | | | |
|----------|---------------------|--------------------------------|----------------|-----------------|---|
| obi_num | 2 | Obi number | sched_exp_time | 20000.000000 | [s] Scheduled observation exposure time |
| ascdsver | 8.4.5 | Processing system revision | ontime | 20138.400133342 | Sum of GTIs [s] |
| caldsver | 4.5.2 | | ontime6 | 20138.400133342 | Sum of GTIs [s] |
| date | 2012-11-03T14:43:36 | Date and time of file creation | ontime7 | 20138.400133342 | Sum of GTIs [s] |
| revision | 3 | Processing version of data | ontime8 | 20138.400133342 | Sum of GTIs [s] |
| | | | l1events | 145557 | Number of level 1 events |

2.1.4 Events

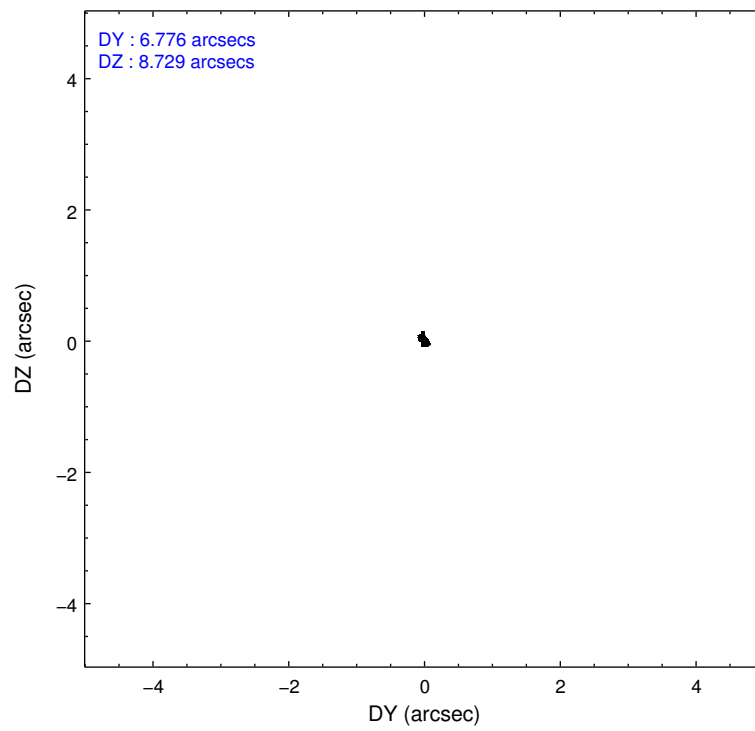
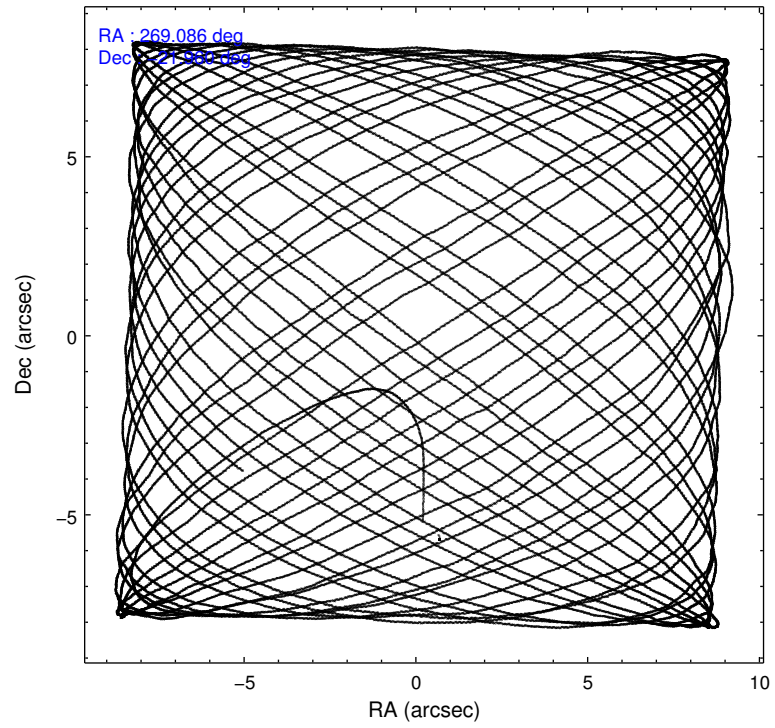
| | ccd 6 | ccd 7 | ccd 8 |
|-----------------|--------------|--------------|--------------|
| level 1 events | 42594 | 47765 | 55198 |
| rejected events | 37917 | 27375 | 45498 |
| rejected % | 89% | 57% | 82% |

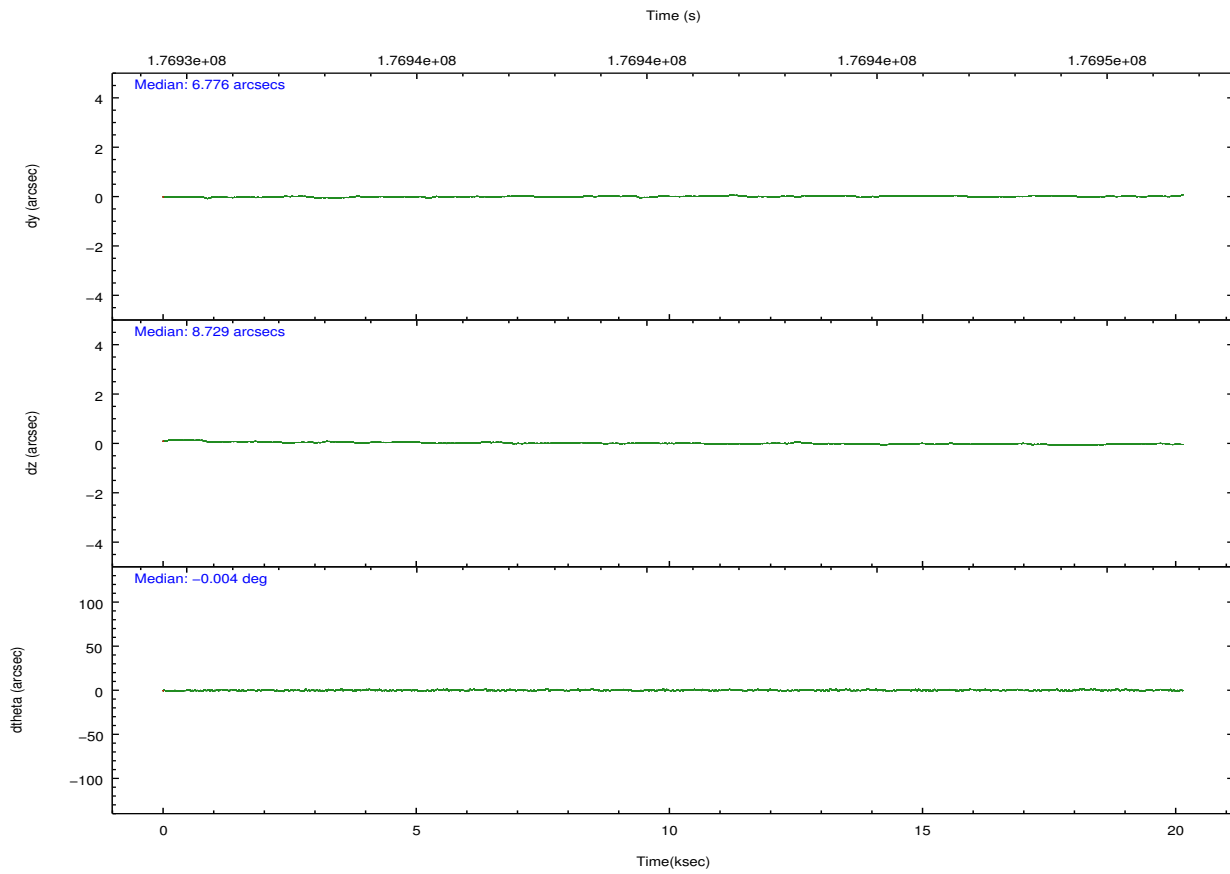
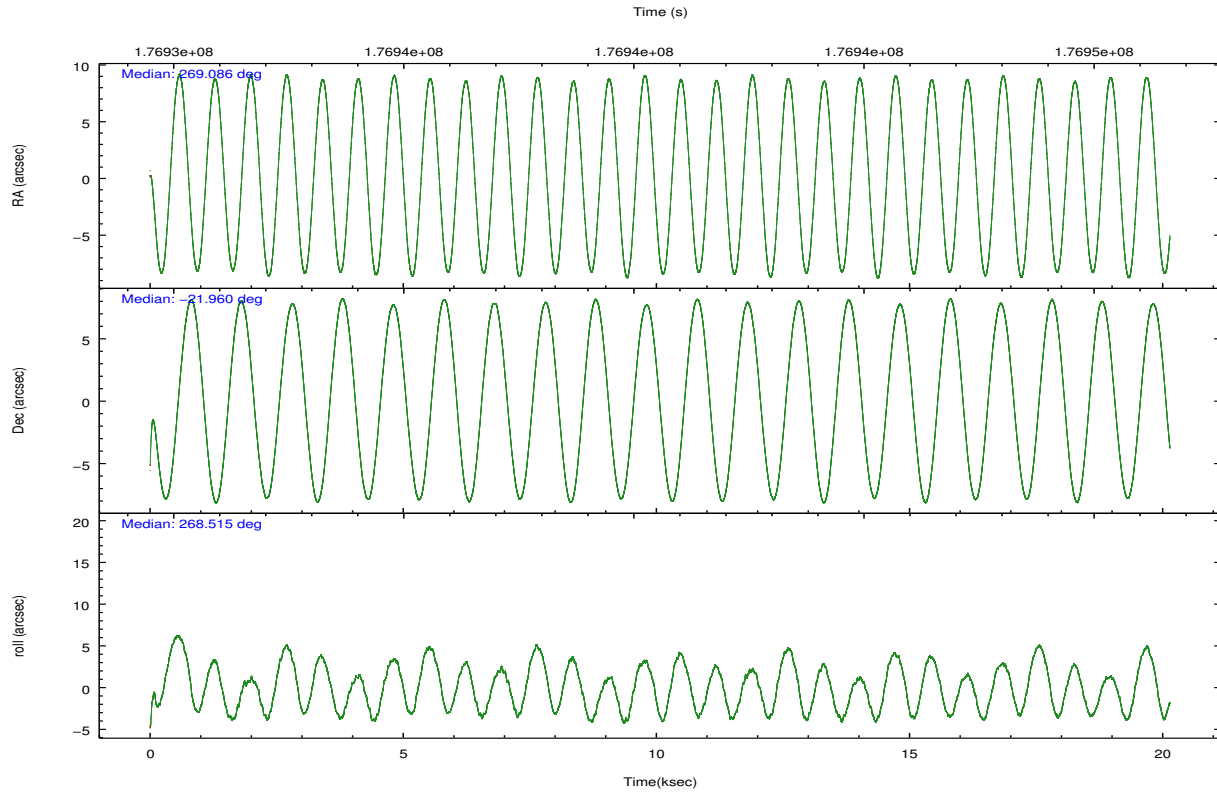
| | ccd 6 | ccd 7 | ccd 8 |
|----------------|--------------|--------------|--------------|
| grade 0 events | 1864 | 2482 | 3050 |
| | 4% | 5% | 5% |
| grade 1 events | 15 | 37 | 19 |
| | 0% | 0% | 0% |
| grade 2 events | 834 | 4419 | 2053 |
| | 1% | 9% | 3% |
| grade 3 events | 742 | 2309 | 1282 |
| | 1% | 4% | 2% |
| grade 4 events | 693 | 2311 | 1125 |
| | 1% | 4% | 2% |
| grade 5 events | 1665 | 4290 | 2027 |
| | 3% | 8% | 3% |
| grade 6 events | 802 | 9948 | 2764 |
| | 1% | 20% | 5% |
| grade 7 events | 35979 | 21969 | 42878 |
| | 84% | 45% | 77% |

2.2 Compared Parameters

| Parameter | Planned | Actual | Parameter | Planned | Actual |
|-----------------------------------|---------------------|----------------------|---------------------------------------|-----------|---------|
| Instrument | ACIS | ACIS | Obspar format version number | 7 | 7 |
| Detector | ACIS-678 | ACIS-678 | Obspar file type | PREDICTED | ACTUAL |
| Grating | NONE | NONE | Obspar update status | NONE | UPDATED |
| Data mode | FAINT | FAINT | Number of optional ACIS chips dropped | 0 | 0 |
| Observation mode | POINTING | POINTING | On-chip summing requested | N | N |
| [deg] Pointing RA | 269.071212 | 269.0855616588363 | Subarray requested | CUSTOM | 1/4 |
| [deg] Pointing Dec | -21.936329 | -21.96010128997396 | Subarray start row | 385 | 385 |
| [deg] Pointing Roll | 268.358684 | 268.5206729337991 | Subarray row count | 256 | 256 |
| [mm] SIM focus pos | -0.684267 | -0.6828225247311905 | Alternating exposures requested | N | N |
| [mm] SIM defocus | 0 | 0.001444936568705701 | [s] Primary exposure time | 0.000000 | 0.9 |
| [mm] SIM translation stage pos | -190.132523 | -190.1425803651734 | | | |
| [mm] SIM translation stage offset | 0 | 0.01005778216563158 | | | |
| [s] Observation start time (MET) | 176930639.184000 | 176929441.17712 | | | |
| Observation start date | 2003-08-10T19:22:55 | 2003-08-10T19:04:01 | | | |
| [s] Observation end time (MET) | 176950639.184000 | 176951439.21556 | | | |
| Observation end date | 2003-08-11T00:56:15 | 2003-08-11T01:10:39 | | | |
| Read mode | TIMED | TIMED | | | |

2.3 Aspect



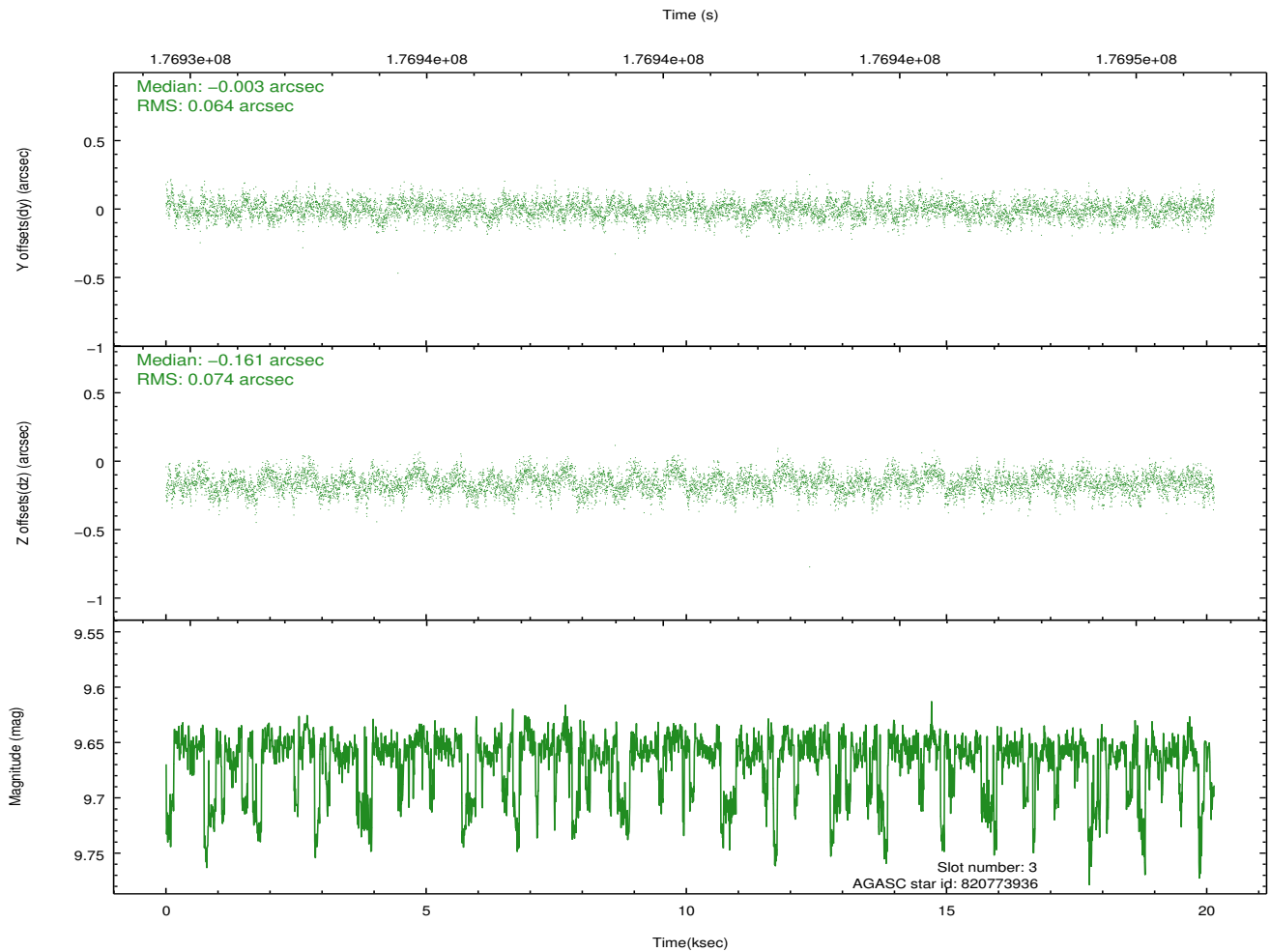
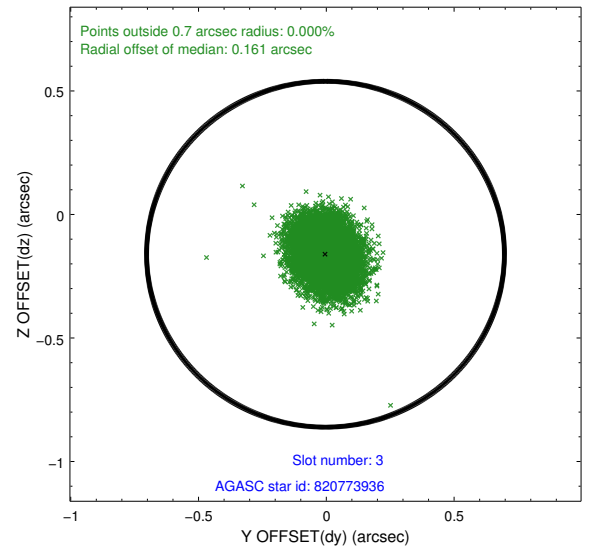
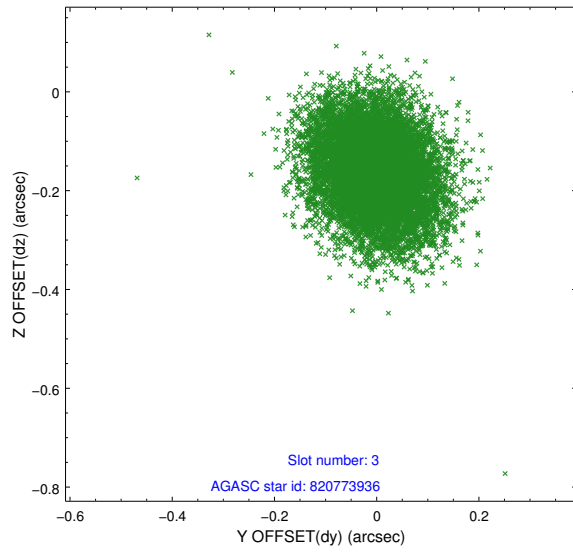


Slot Statistics

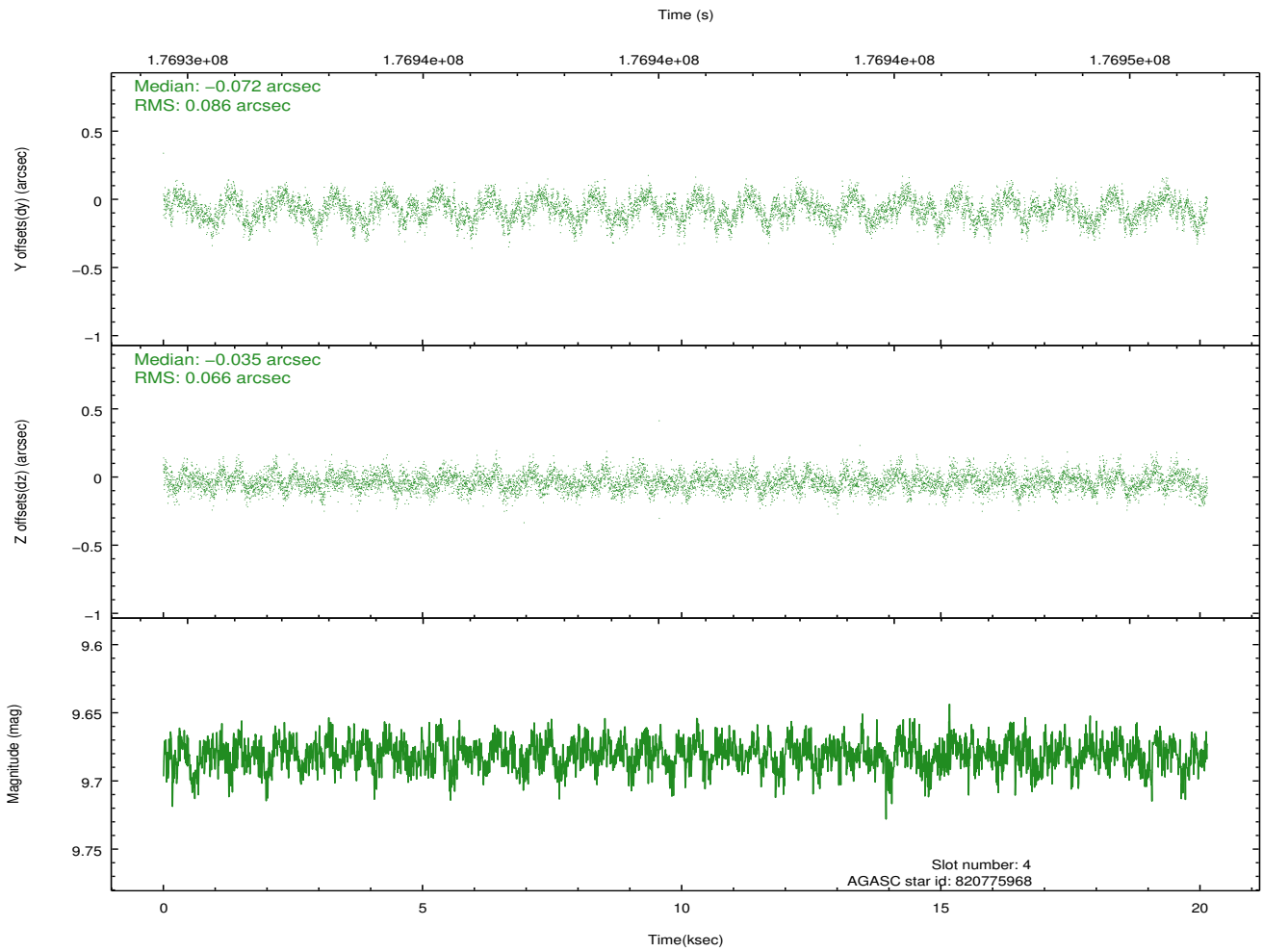
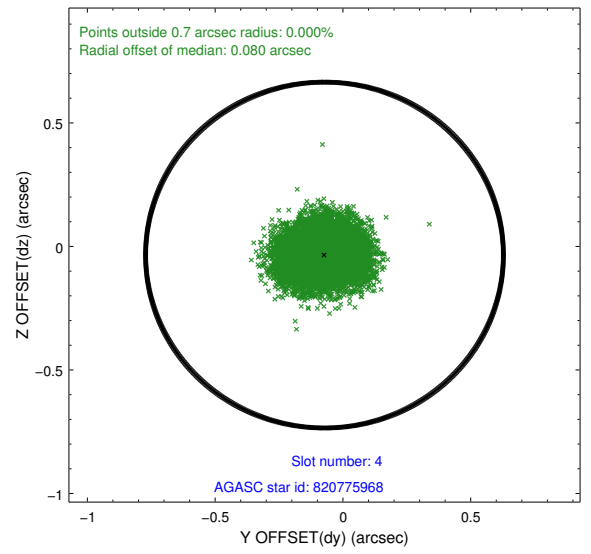
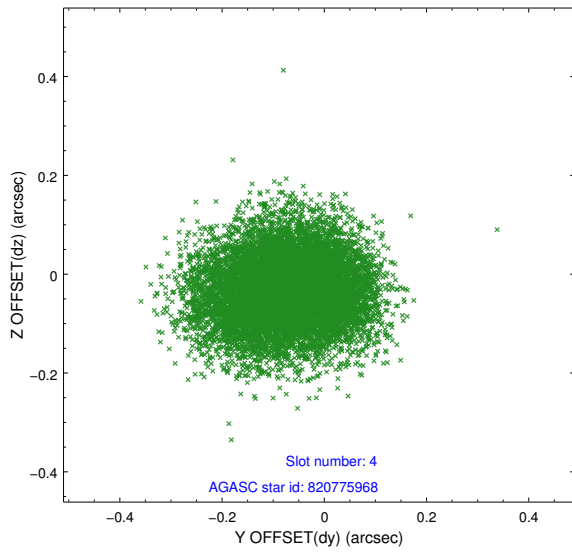
| slot | status | id | mag | n_pts | med_dy | med_dz | dr1 | dr2 | ra | dec | mean_y | mean_z |
|------|--------|-----------|------|-------|--------|--------|-------|-------|------------|------------|----------|----------|
| 0 | FID | ACIS-S-4 | 7.20 | 4913 | 0.061 | 0.015 | 0.006 | 0.010 | 0.000000 | 0.000000 | 2153.89 | 178.76 |
| 1 | FID | ACIS-S-5 | 7.23 | 4913 | -0.069 | 0.018 | 0.005 | 0.009 | 0.000000 | 0.000000 | -1812.19 | 172.30 |
| 2 | FID | ACIS-S-6 | 7.35 | 4913 | -0.021 | -0.019 | 0.008 | 0.012 | 0.000000 | 0.000000 | 401.87 | 815.98 |
| 3 | GUIDE | 820773936 | 9.66 | 9792 | -0.003 | -0.161 | 0.103 | 0.168 | 269.091507 | -21.814142 | -441.33 | 55.46 |
| 4 | GUIDE | 820775968 | 9.68 | 9818 | -0.072 | -0.035 | 0.117 | 0.183 | 268.652762 | -21.447691 | -1716.12 | -1451.98 |
| 5 | GUIDE | 896672232 | 9.51 | 9823 | 0.118 | 0.191 | 0.094 | 0.154 | 269.476470 | -22.569368 | 2241.27 | 1412.43 |
| 6 | GUIDE | 896673568 | 7.26 | 9826 | 0.114 | 0.138 | 0.071 | 0.105 | 269.738578 | -22.517547 | 2033.25 | 2279.22 |
| 7 | GUIDE | 820774352 | 9.30 | 9820 | -0.158 | -0.135 | 0.091 | 0.149 | 268.372882 | -21.768548 | -531.13 | -2350.73 |

2.4 Star Slots

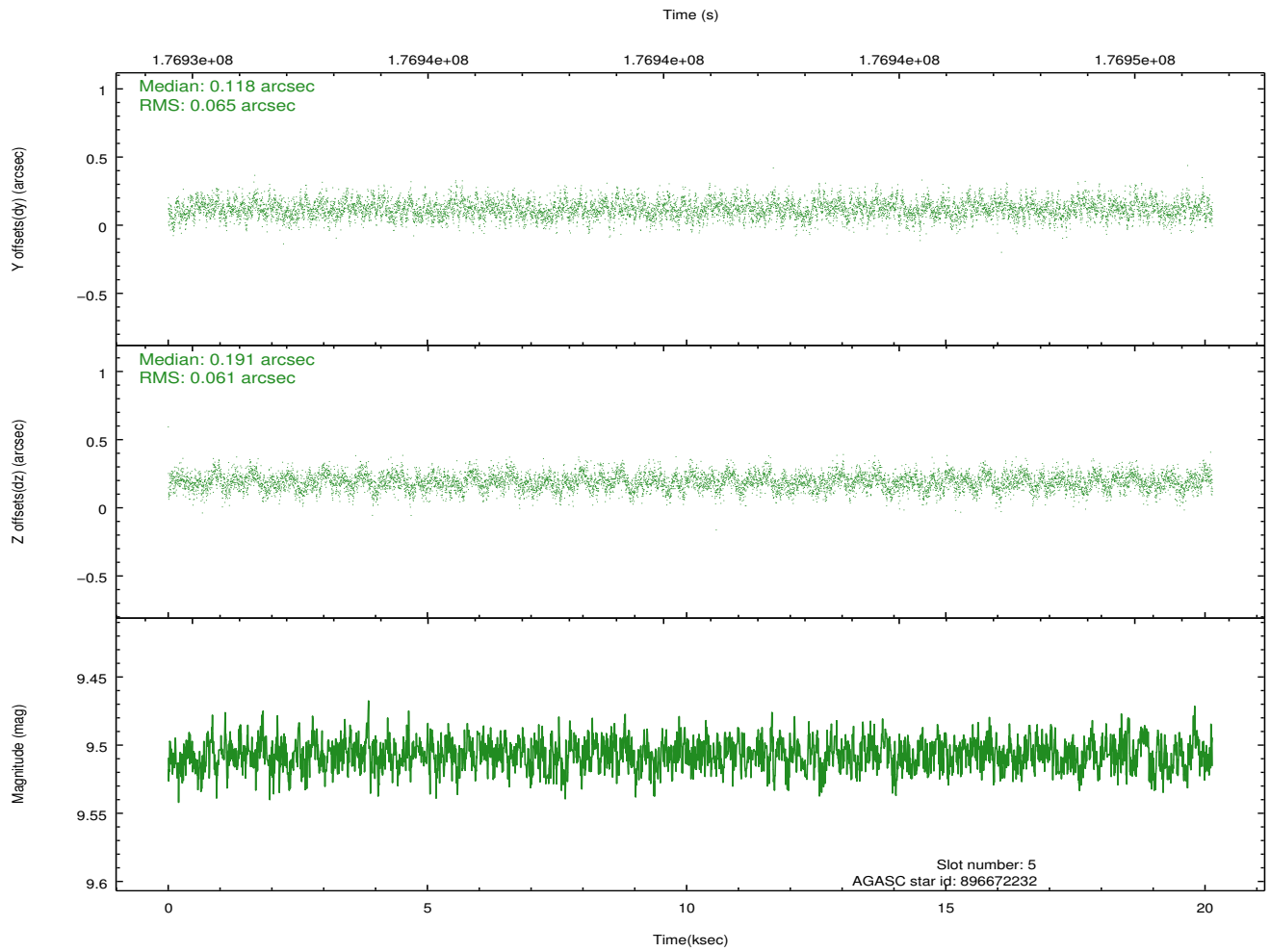
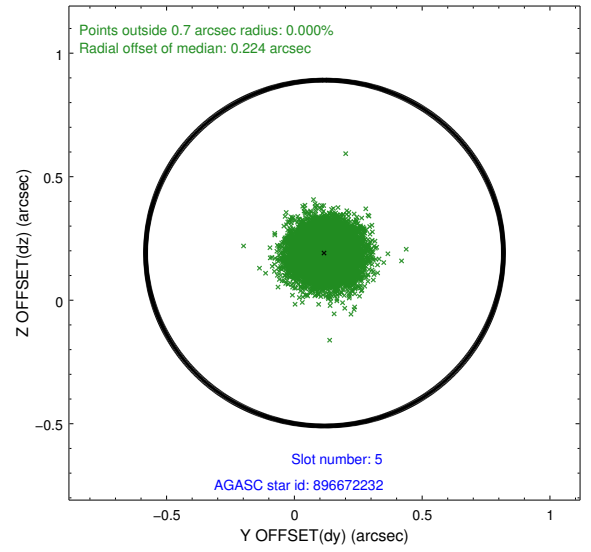
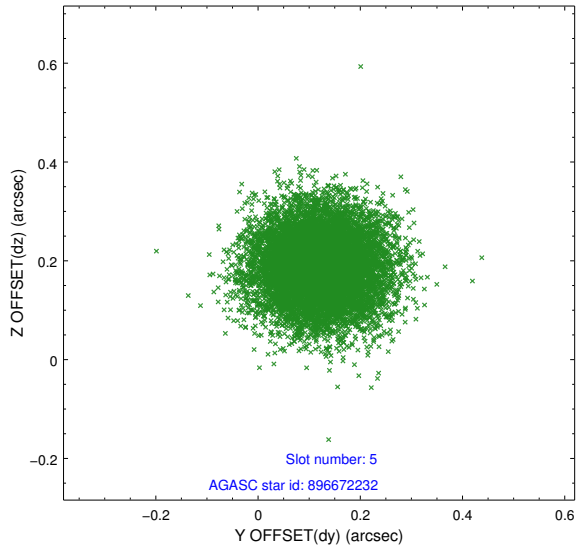
2.4.1 Slot 3



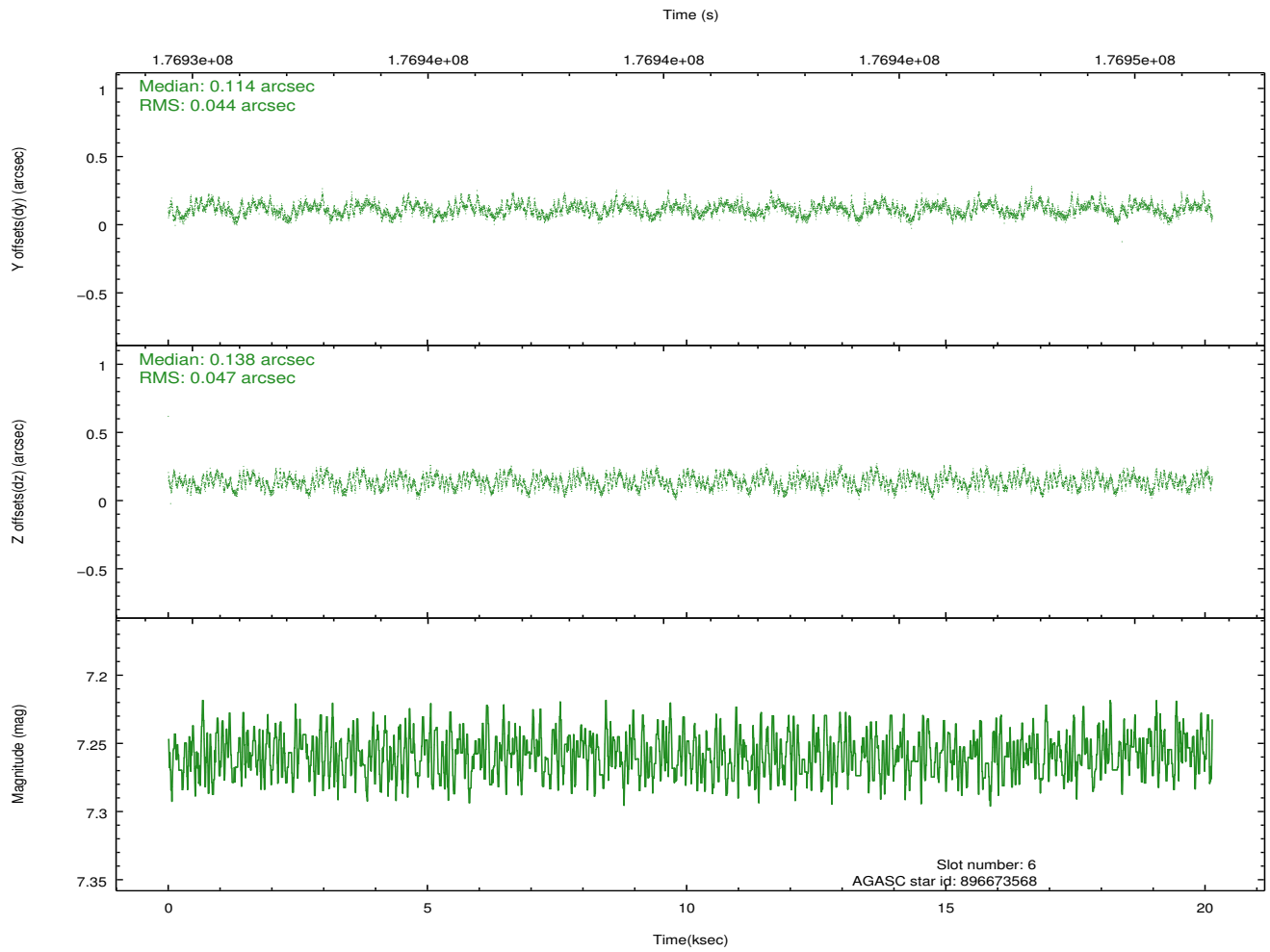
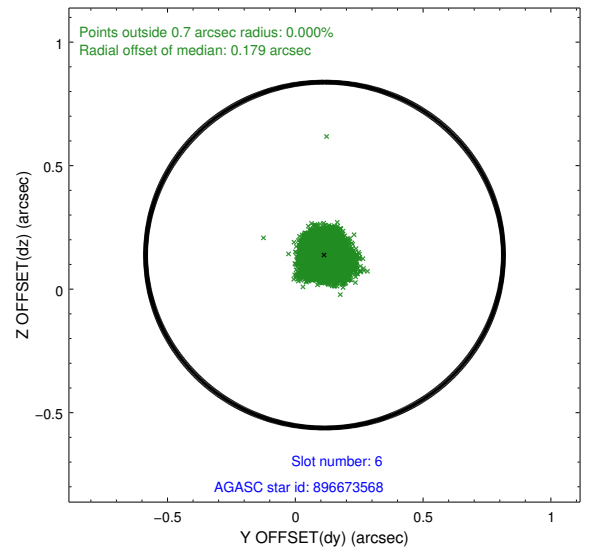
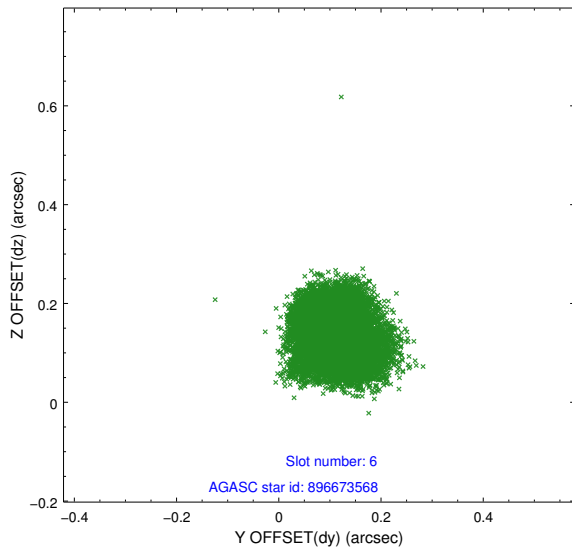
2.4.2 Slot 4



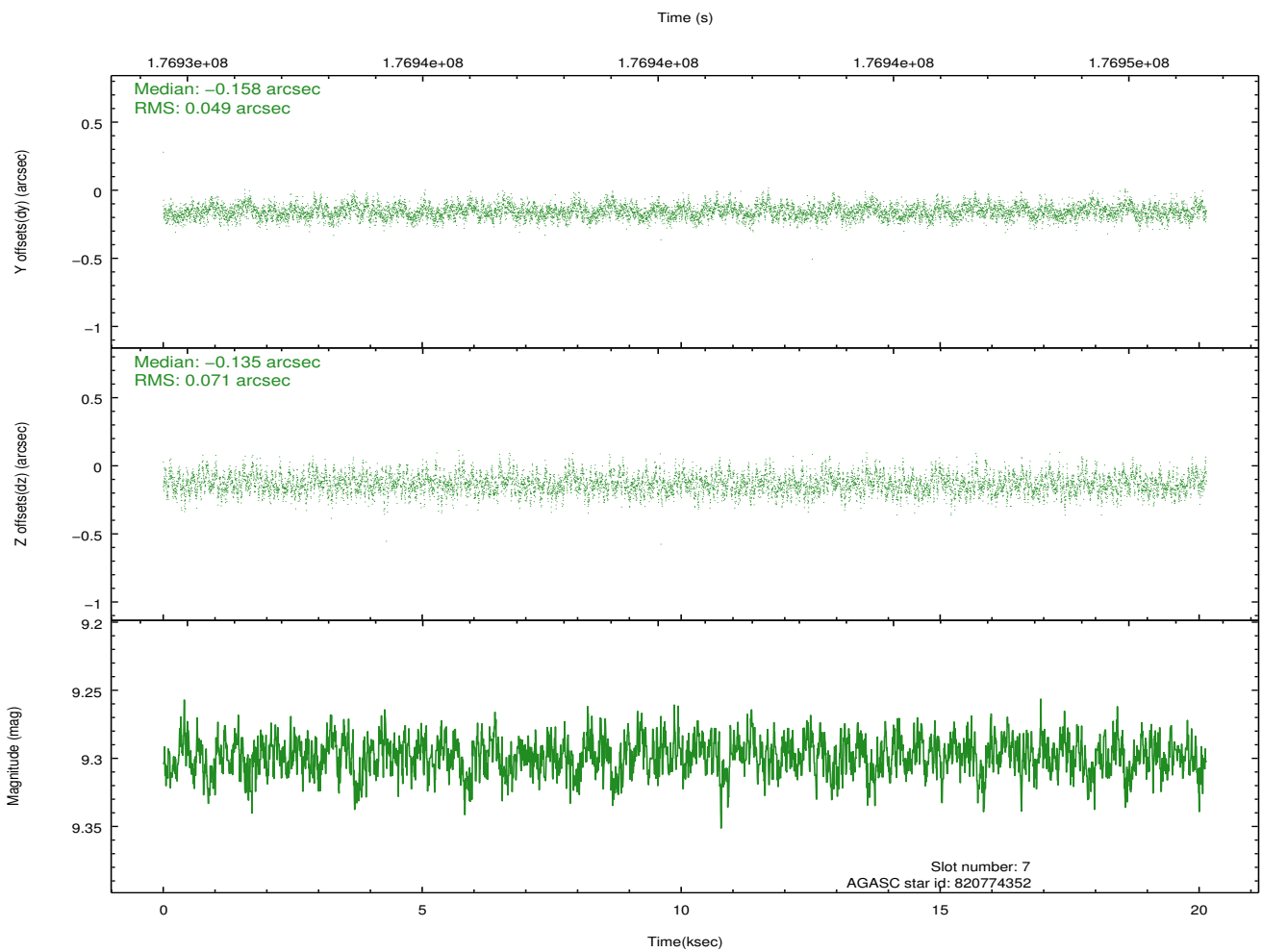
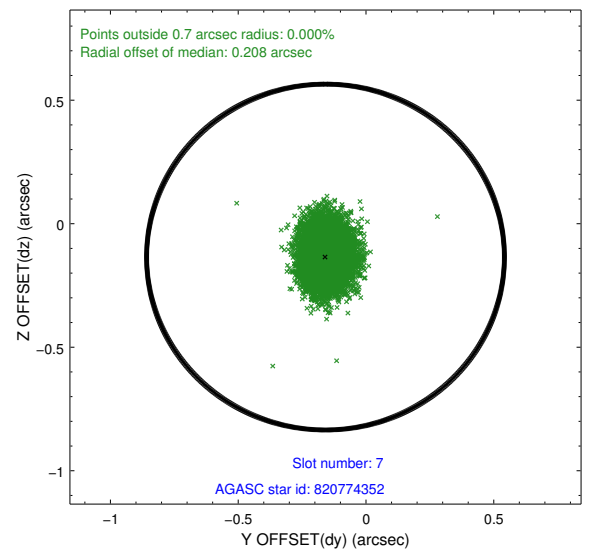
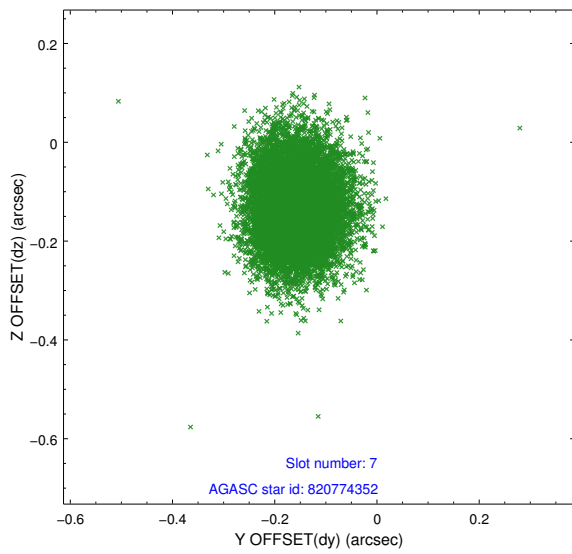
2.4.3 Slot 5



2.4.4 Slot 6

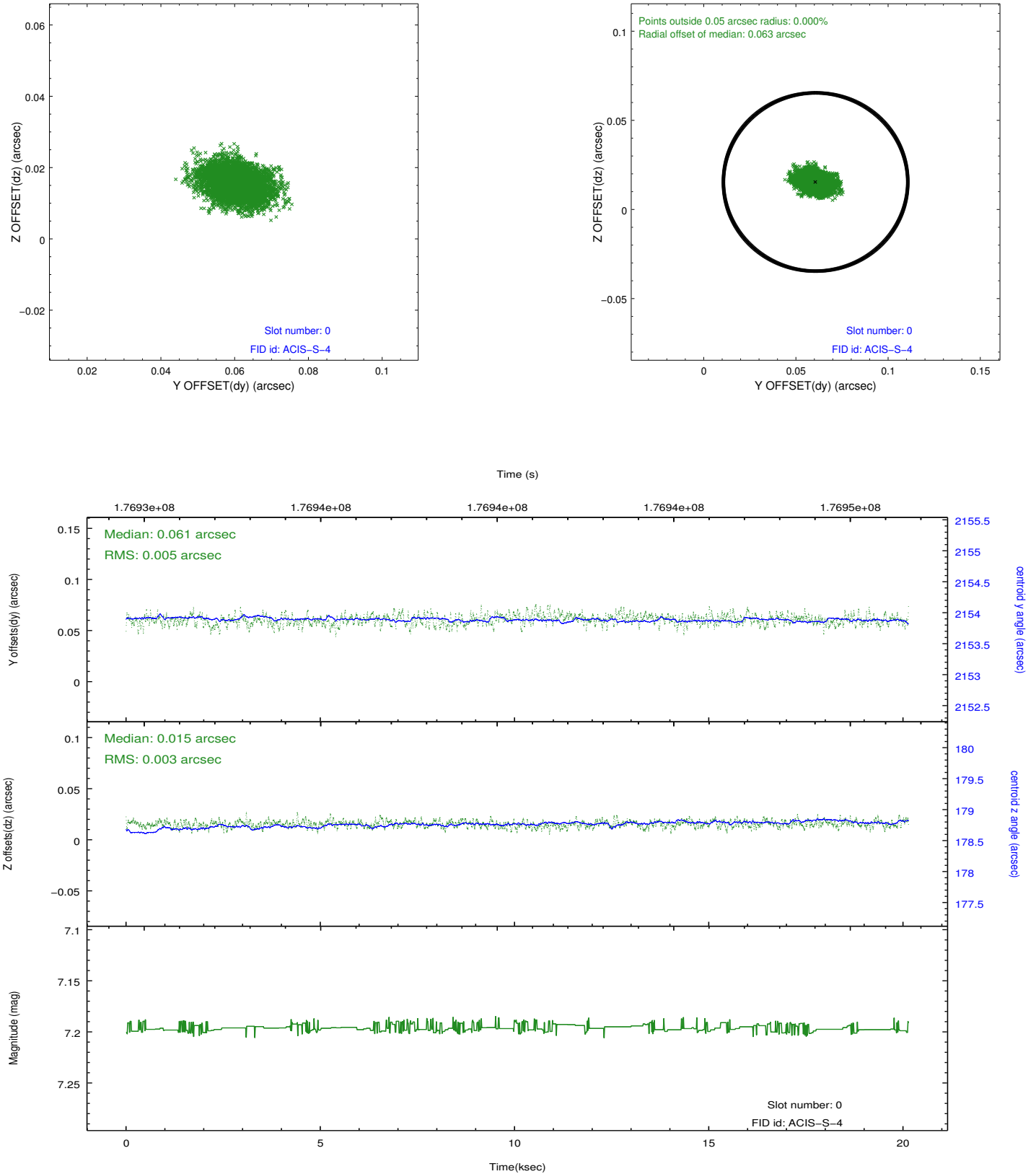


2.4.5 Slot 7

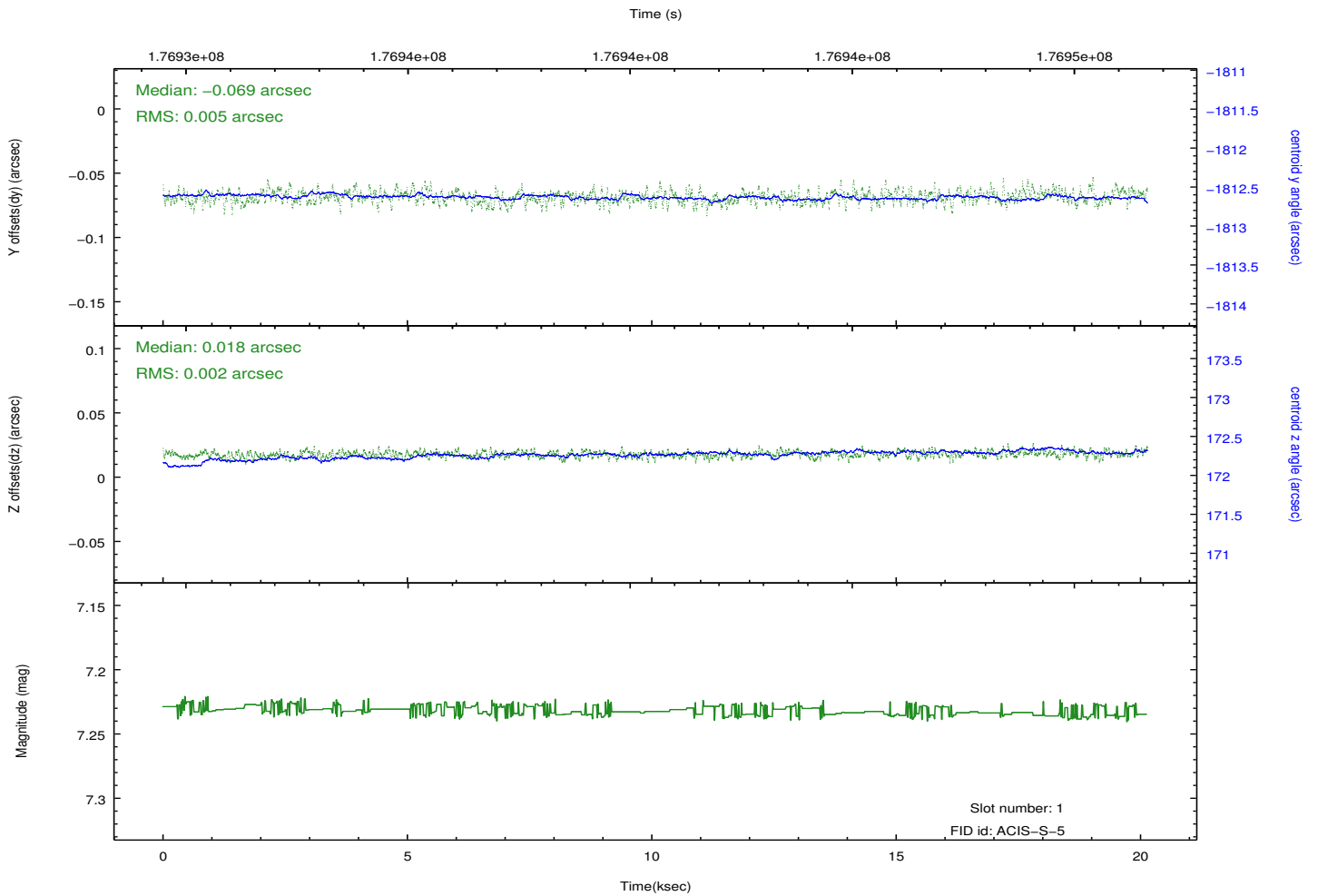
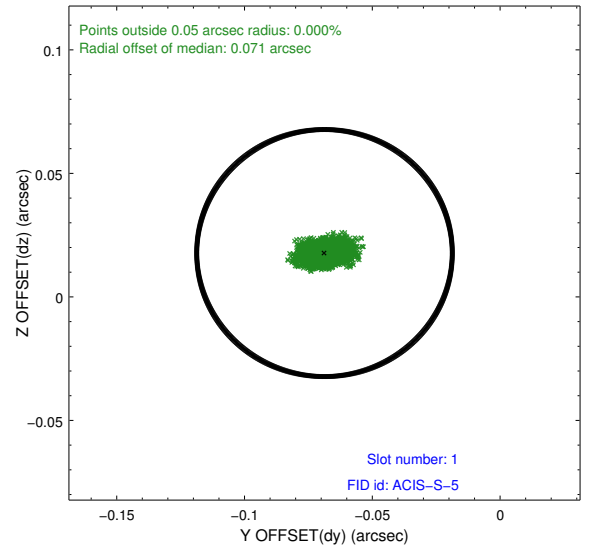
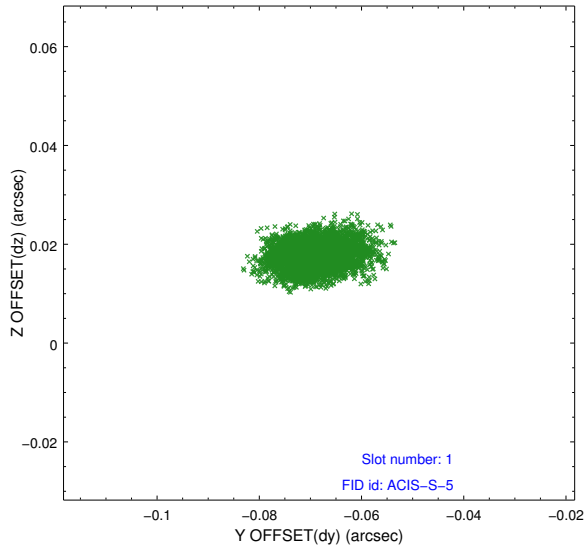


2.5 FID Slots

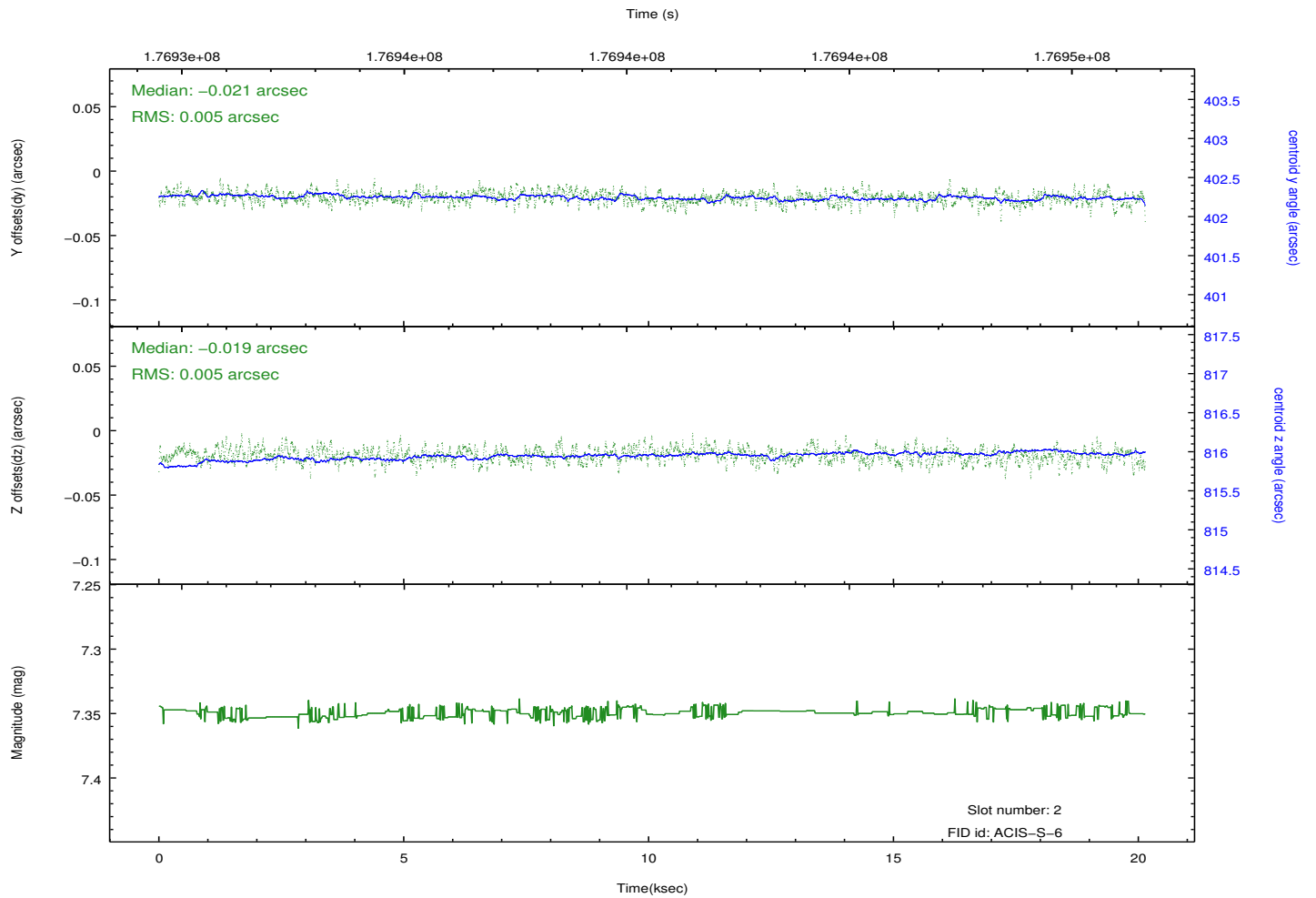
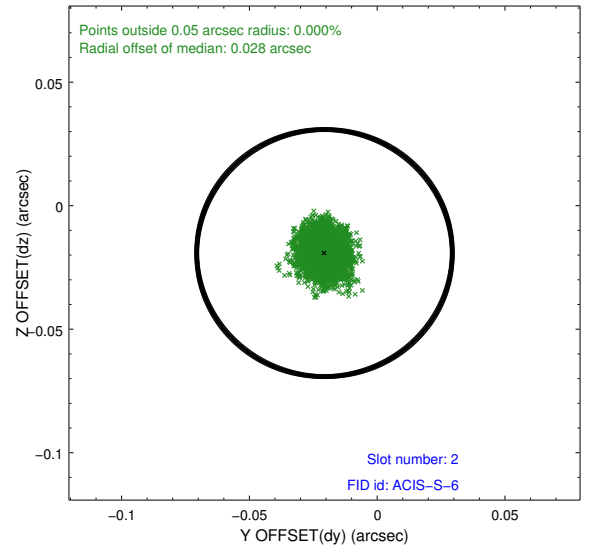
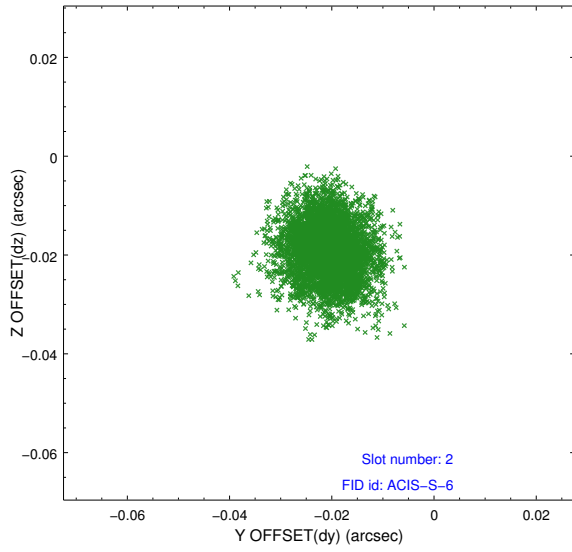
2.5.1 Slot 0



2.5.2 Slot 1



2.5.3 Slot 2



A Summary

A.1 Status

| | |
|----------------------------|------------|
| V&V Scientist | Jen Lauer |
| V&V Date (YYYY-MM-DD) | 2012.11.29 |
| V&V Edition | 1 |
| V&V Disposition and Status | OK |
| V&V Charge Time | 20.138 |

A.2 Comments

Roll preference met.