

V&V Reference Report

L2 ASCDS Version : 8.4.5

Observation 3903 - L2 Version 4
Chandra X-Ray Center

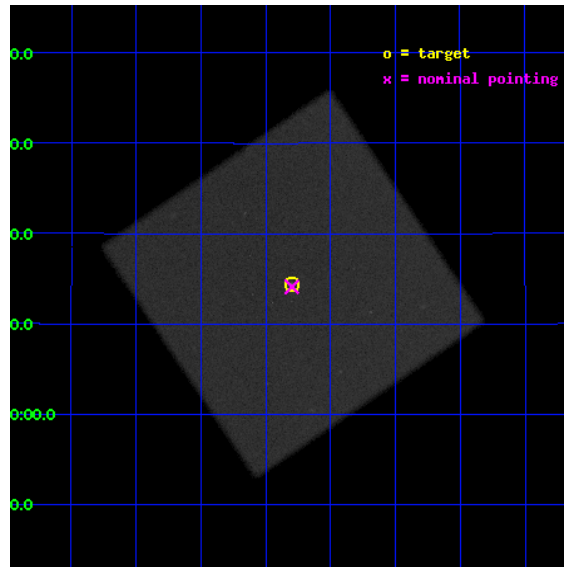
L2 Processing Date : Oct 21 2012

Contents

1	Front	2
2	OBI	3
2.1	OBI	3
2.1.1	Images	3
2.1.2	Parameters	4
2.1.3	Events	4
2.2	Compared Parameters	5
2.3	Aspect	6
2.4	Star Slots	9
2.4.1	Slot 3	9
2.4.2	Slot 4	10
2.4.3	Slot 5	11
2.4.4	Slot 6	12
2.4.5	Slot 7	13
2.5	FID Slots	14
2.5.1	Slot 0	14
2.5.2	Slot 1	15
2.5.3	Slot 2	16
A	Summary	17
A.1	Status	17
A.2	Comments	17

1 Front

seq_num	500382	Sequence number
obs_id	3903	Observation id
title	THE PULSAR WIND NEBULA AROUND PSR 0656+14	Proposal title
observer	Dr. Vyacheslav Zavlin	Principal investigator
object	PSR B0656+14	Source name
ra_targ	104.950417	Observer's specified target RA [deg]
dec_targ	14.239306	Observer's specified target Dec [deg]
ra_nom	104.94954747868	Nominal RA [deg]
dec_nom	14.235223452031	Nominal Dec [deg]
roll_nom	280.90905075483	Nominal Roll [deg]
revision	4	Processing version of data
ontime	40239.451688468	[s]
livetime	40016.369778894	Ontime multiplied by DTCOR
l2events	1234865	Number of level 2 events

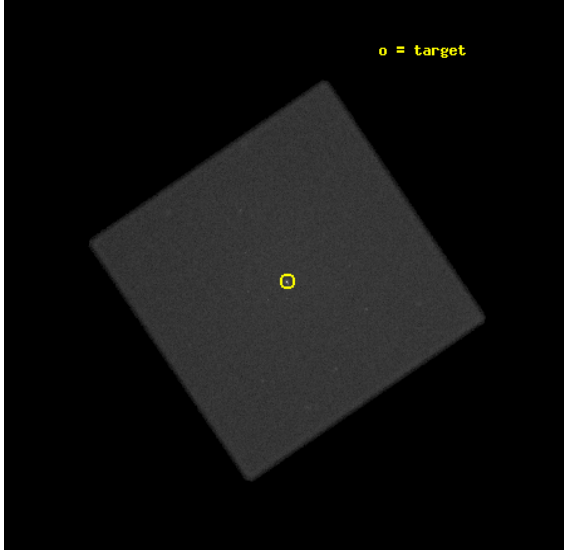


2 OBI

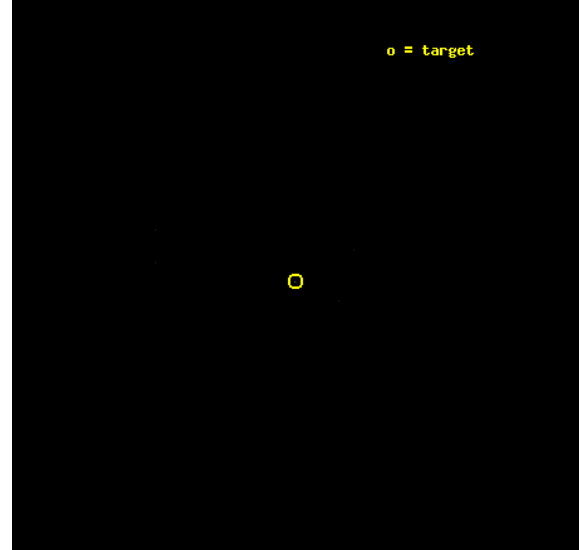
2.1 OBI

2.1.1 Images

Level 1 Image



Level 1 Bad Events



2.1.2 Parameters

obi_num	0	Obi number	sched_exp_time	40368.437000	[s] Scheduled observation exposure time
ascdsver	8.4.5	Processing system revision	ontime	40239.451688468	[s]
caldbver	4.5.2	 	l1events	1784876	Number of level 1 events
date	2012-10-21T07:01:08	Date and time of file creation			
revision	4	Processing version of data			

2.1.3 Events

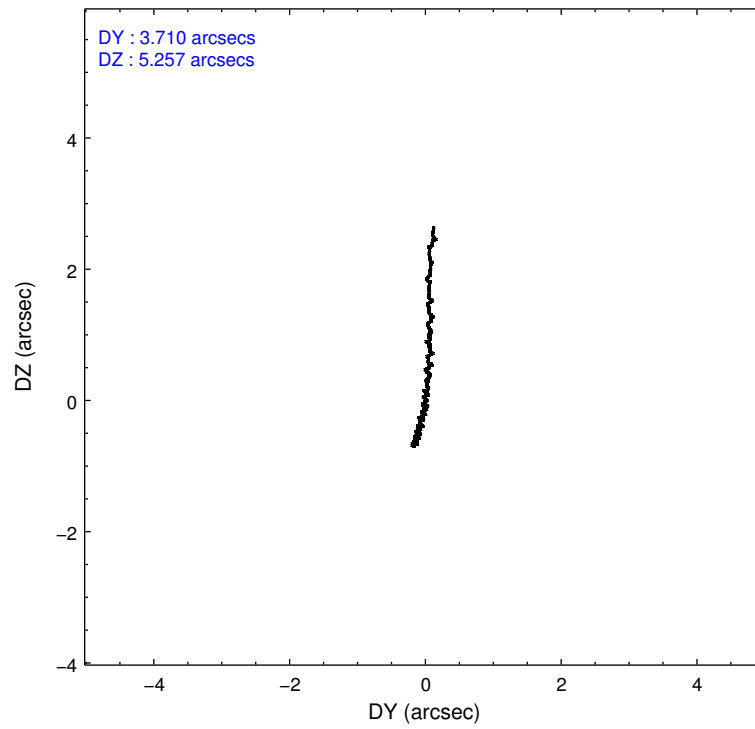
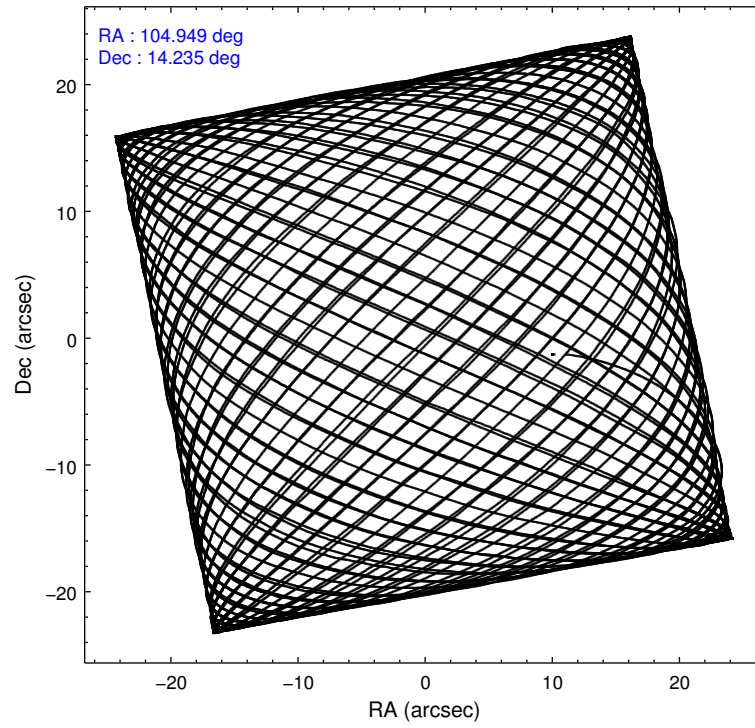
Level 1 Events

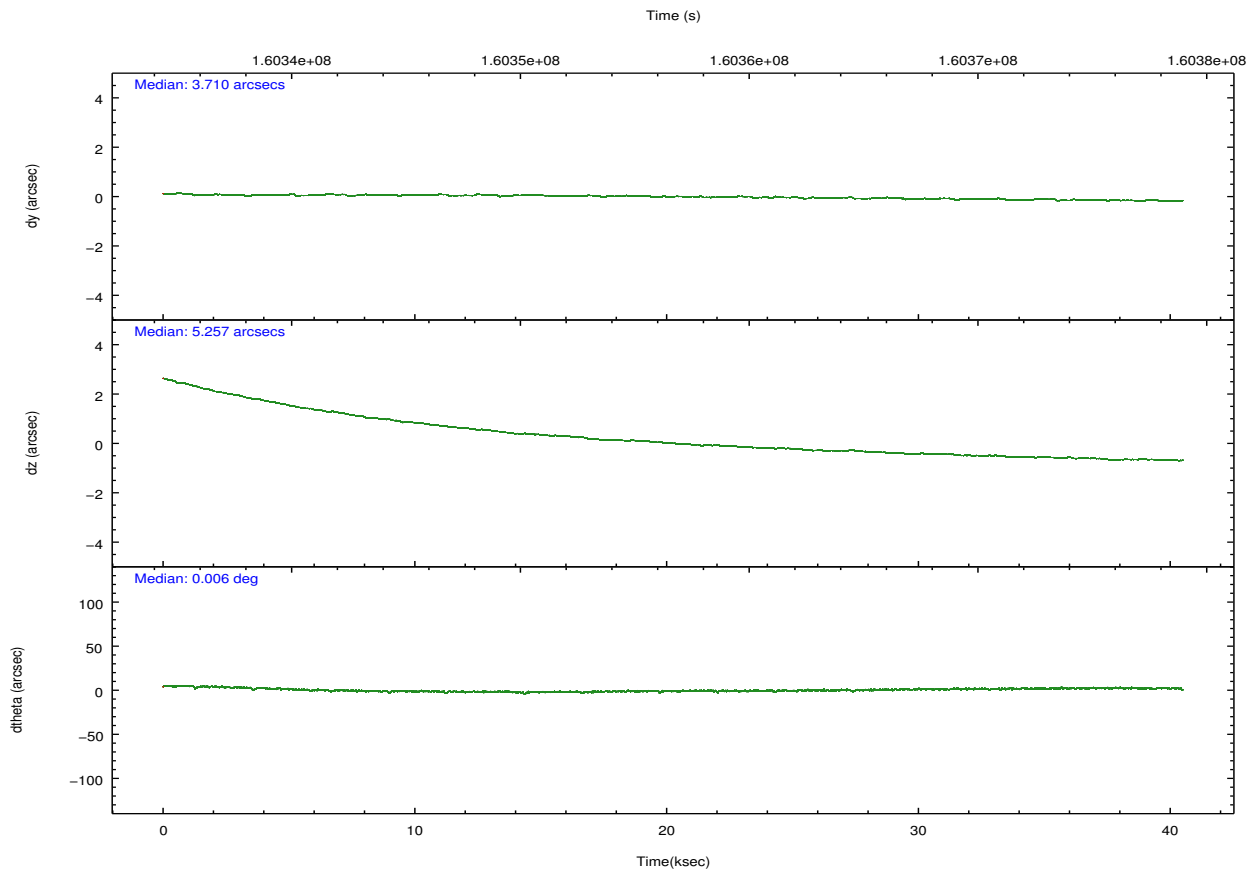
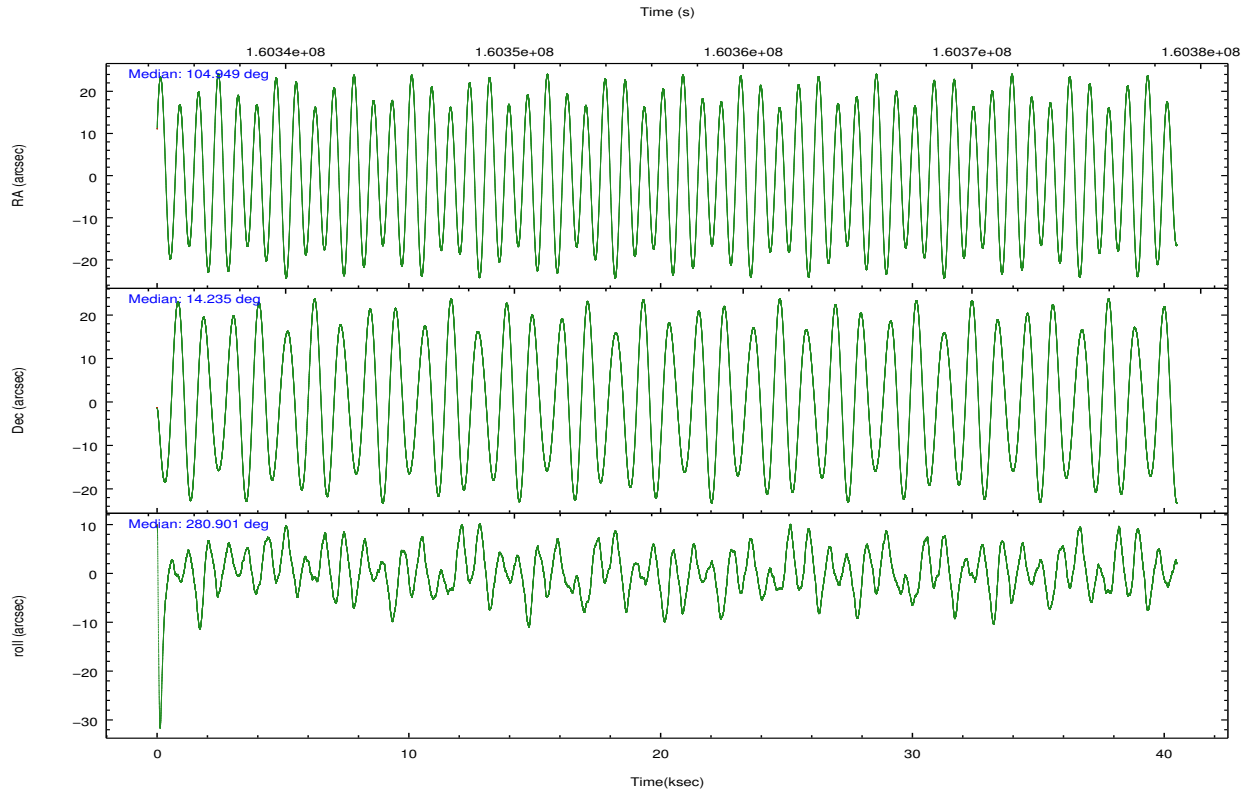
	segment 0
level 1 events	1784876
rejected events	3134
rejected %	0%

2.2 Compared Parameters

Parameter	Planned	Actual	Parameter	Planned	Actual
Instrument	HRC	HRC	Obspar format version number	7	7
Detector	HRC-I	HRC-I	Obspar file type	PREDICTED	ACTUAL
Grating	NONE	NONE	Obspar update status	NONE	UPDATED
Data mode	OBSERVING	OBSERVING			
Observation mode	POINTING	POINTING			
[deg] Pointing RA	104.930746	104.9495474786841			
[deg] Pointing Dec	14.255296	14.23522345203059			
[deg] Pointing Roll	281.009149	280.9090507548292			
[mm] SIM focus pos	-1.040293	-1.038866356238299			
[mm] SIM defocus	0	0.001426264420575141			
[mm] SIM translation stage pos	126.985494	126.9829799899862			
[mm] SIM translation stage offset	0	0.002508901615314585			
[s] Observation start time (MET)	160336553.184000	160335760.57482			
Observation start date	2003-01-30T17:54:49	2003-01-30T17:42:40			
[s] Observation end time (MET)	160376921.184000	160377235.66406			
Observation end date	2003-01-31T05:07:37	2003-01-31T05:13:55			

2.3 Aspect



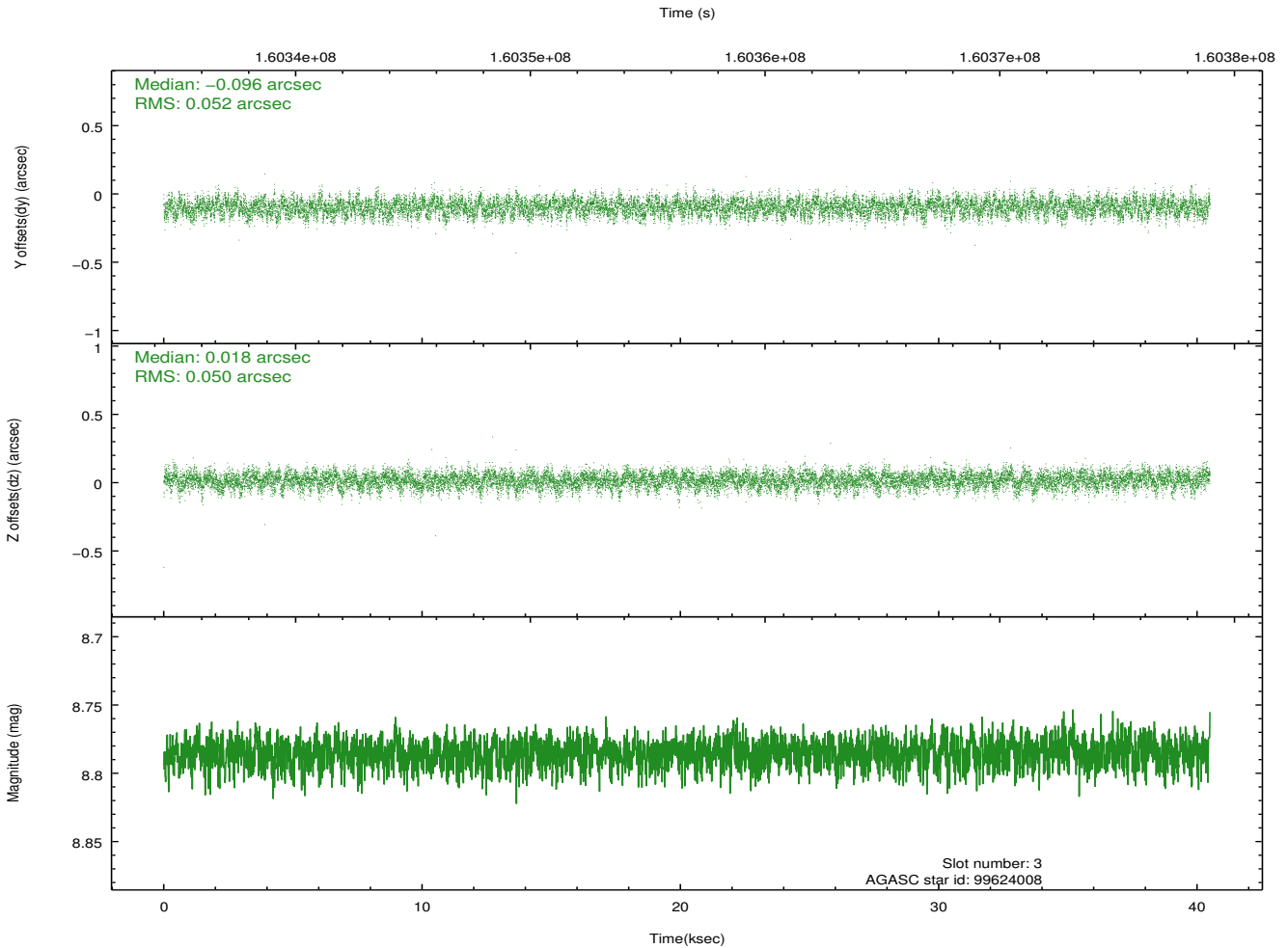
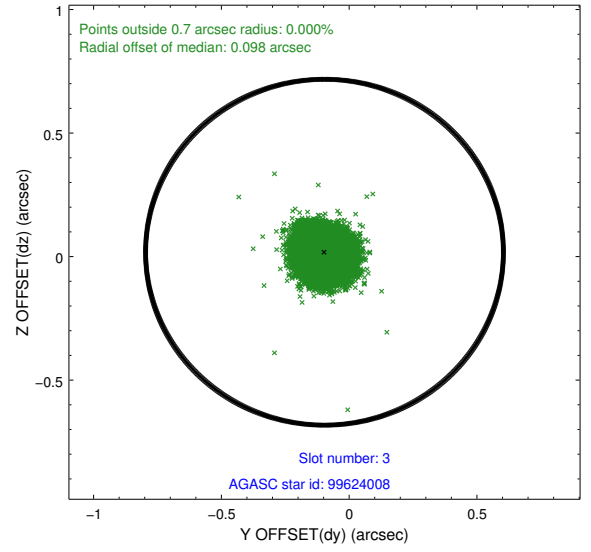
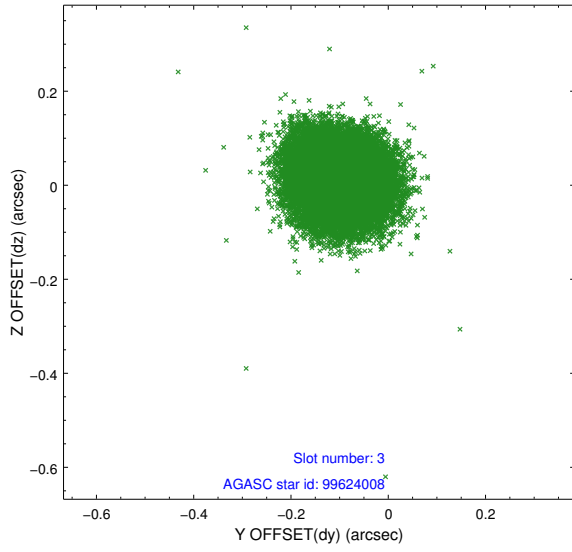


Slot Statistics

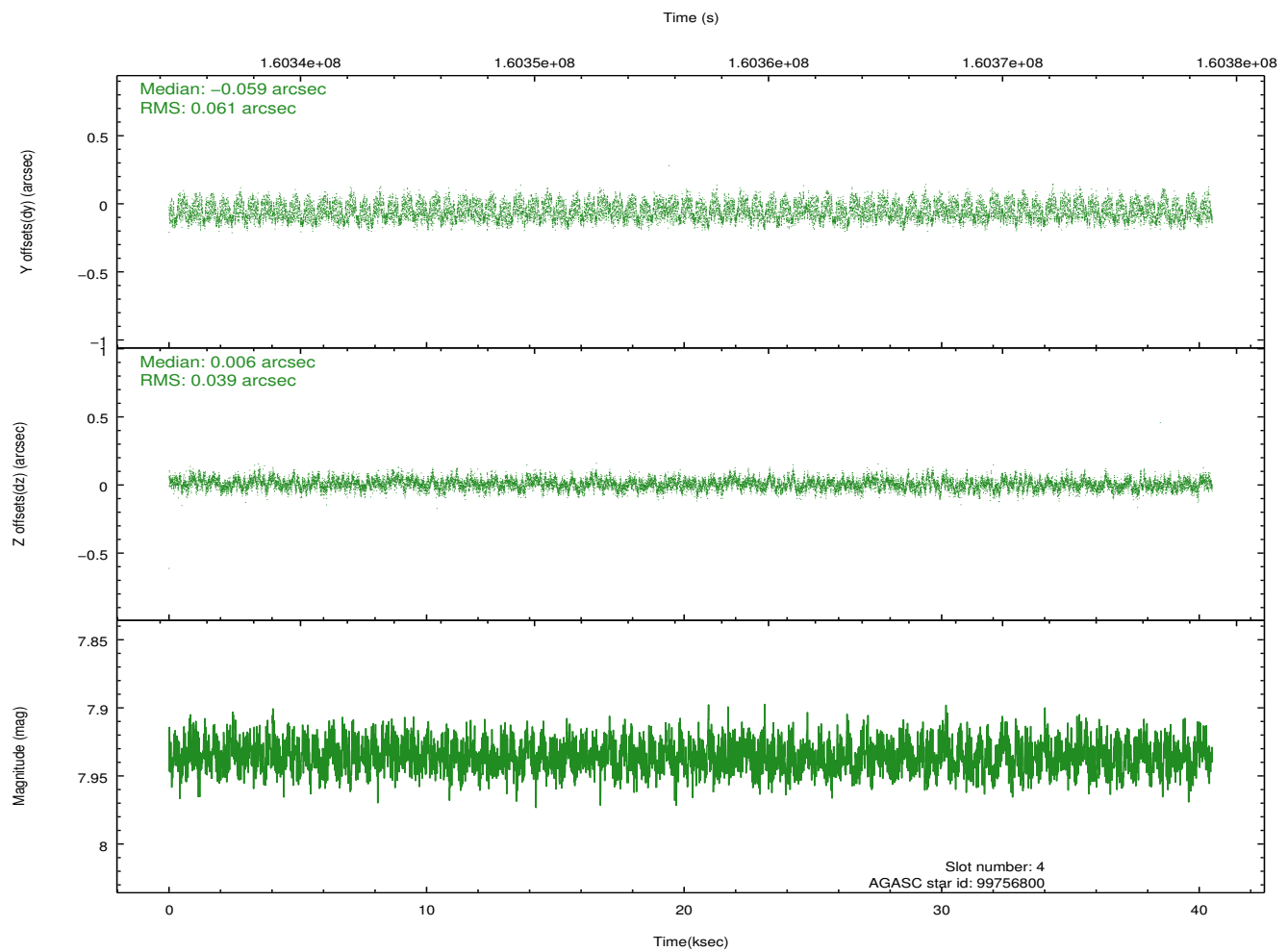
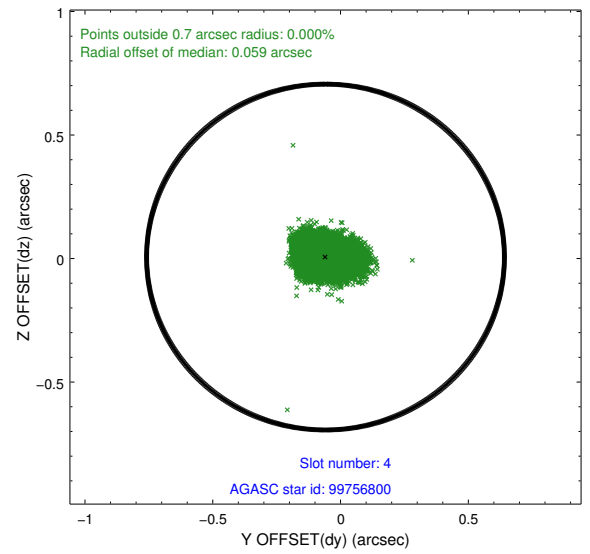
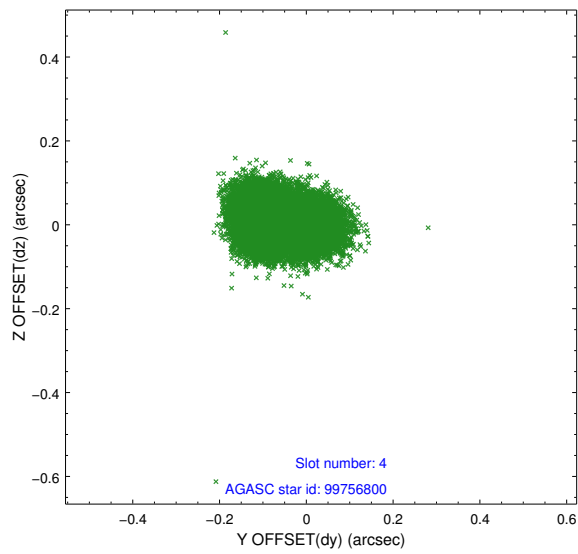
slot	status	id	mag	n_pts	med_dy	med_dz	dr1	dr2	ra	dec	mean_y	mean_z
0	FID	HRC-I-1	7.01	9879	-0.001	-0.018	0.022	0.034	0.000000	0.000000	-759.13	-1293.40
1	FID	HRC-I-2	7.06	9879	0.106	-0.063	0.015	0.039	0.000000	0.000000	853.52	-1295.09
2	FID	HRC-I-3	7.11	9877	0.013	-0.010	0.015	0.046	0.000000	0.000000	-1187.61	1011.04
3	GUIDE	99624008	8.79	19757	-0.096	0.018	0.077	0.123	104.277882	14.725153	-2097.35	-1907.71
4	GUIDE	99756800	7.94	19754	-0.059	0.006	0.078	0.122	105.449167	14.846974	-1748.73	2178.01
5	GUIDE	99629536	9.60	19705	-0.028	0.002	0.127	0.209	104.248105	14.255832	-459.79	-2336.62
6	GUIDE	99622000	8.85	19756	0.109	0.071	0.080	0.127	104.781578	13.702906	1852.60	-891.36
7	GUIDE	99763912	9.47	19680	0.074	-0.094	0.131	0.211	105.524153	14.729731	-1284.68	2354.78

2.4 Star Slots

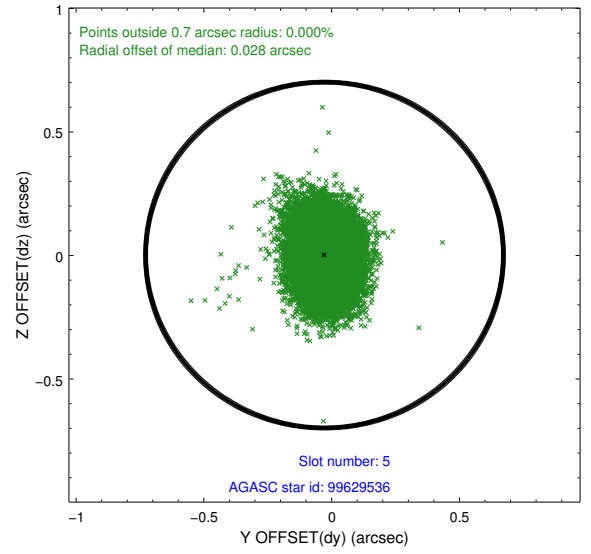
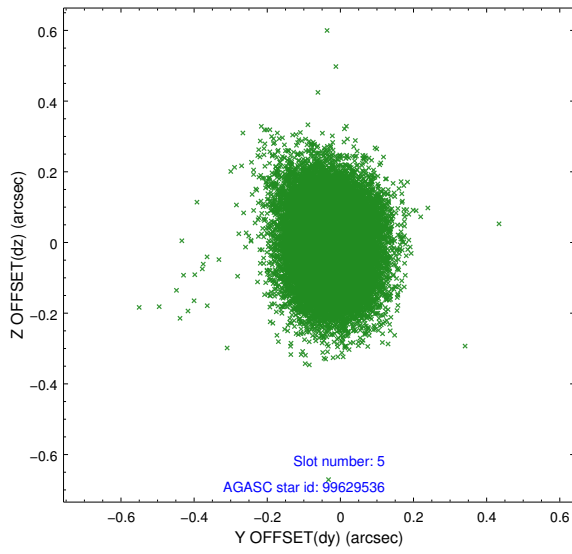
2.4.1 Slot 3



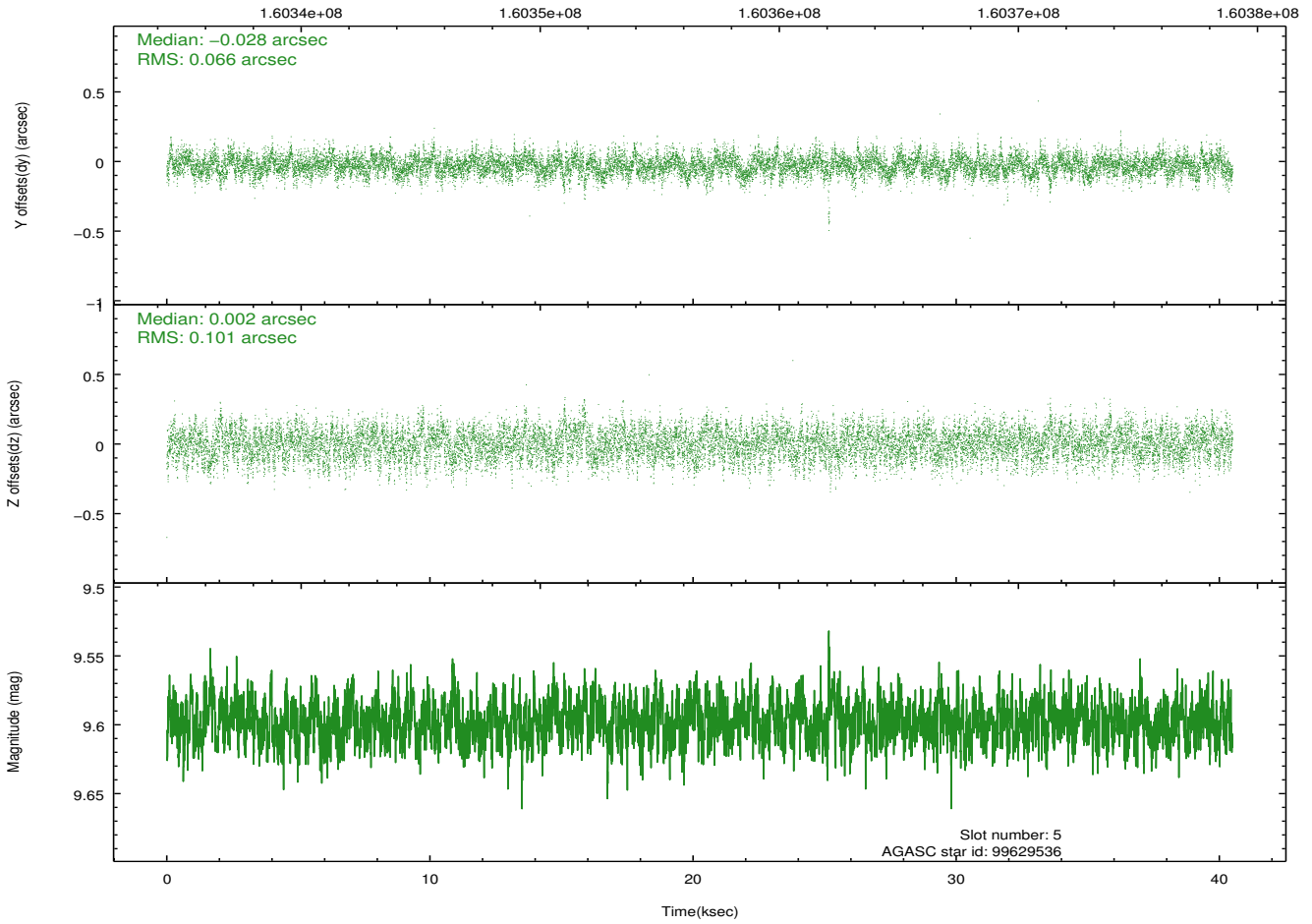
2.4.2 Slot 4



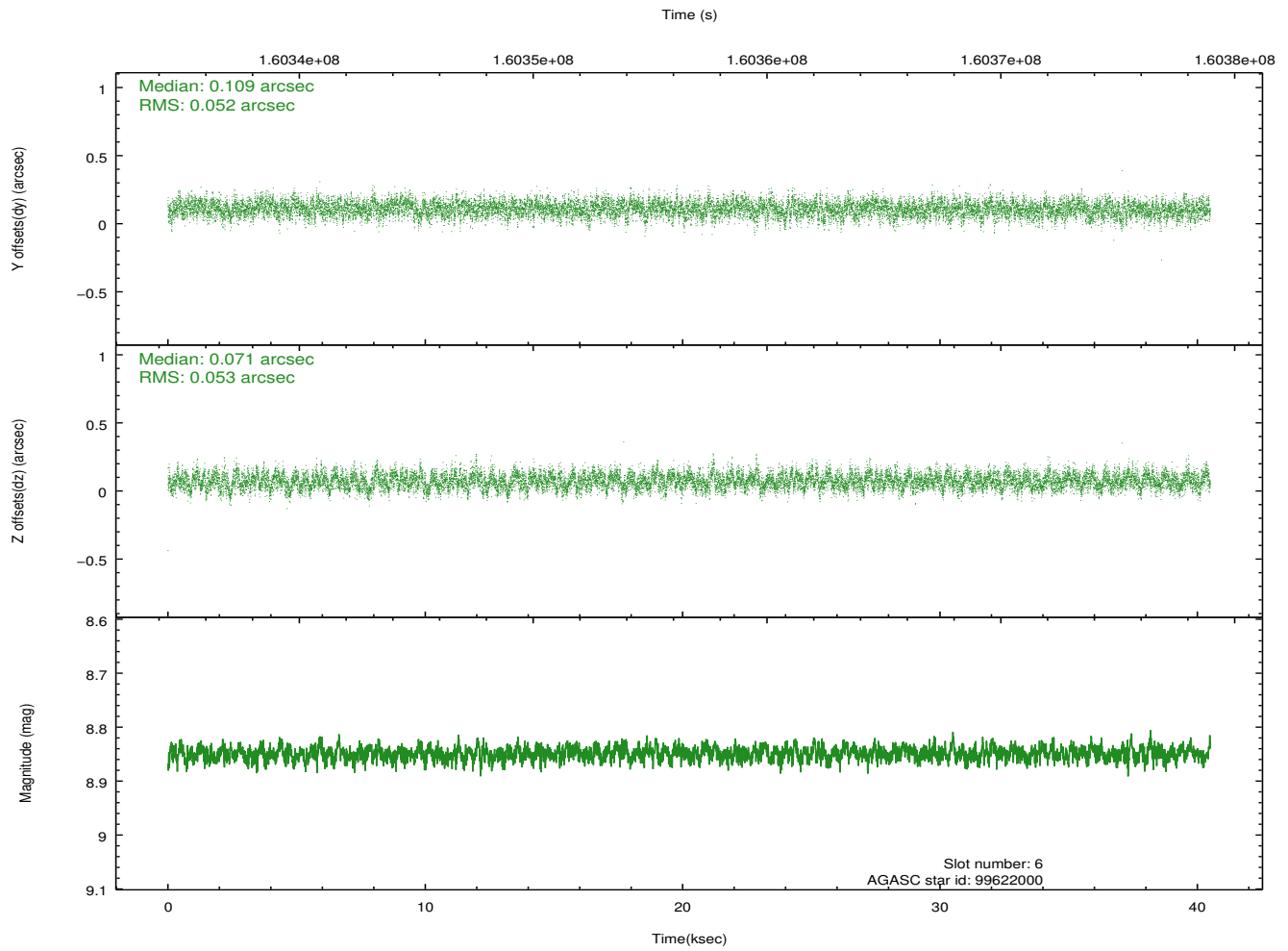
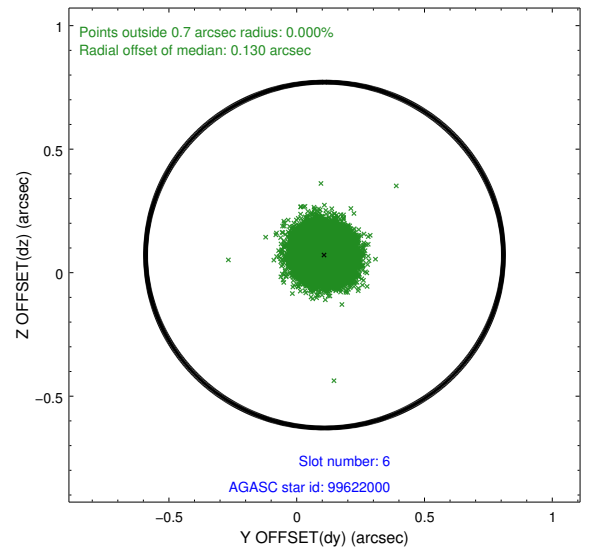
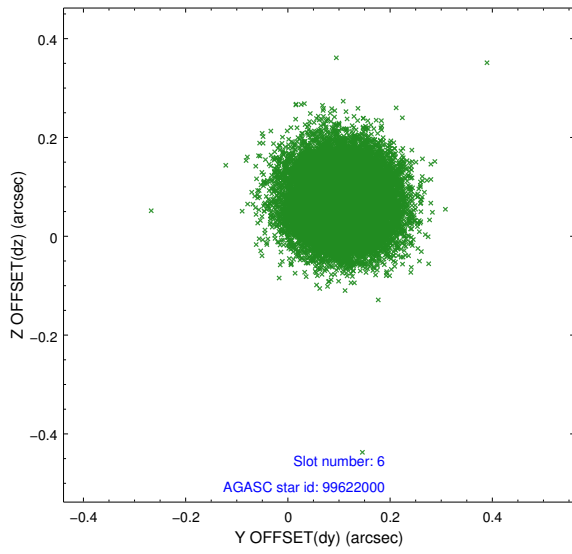
2.4.3 Slot 5



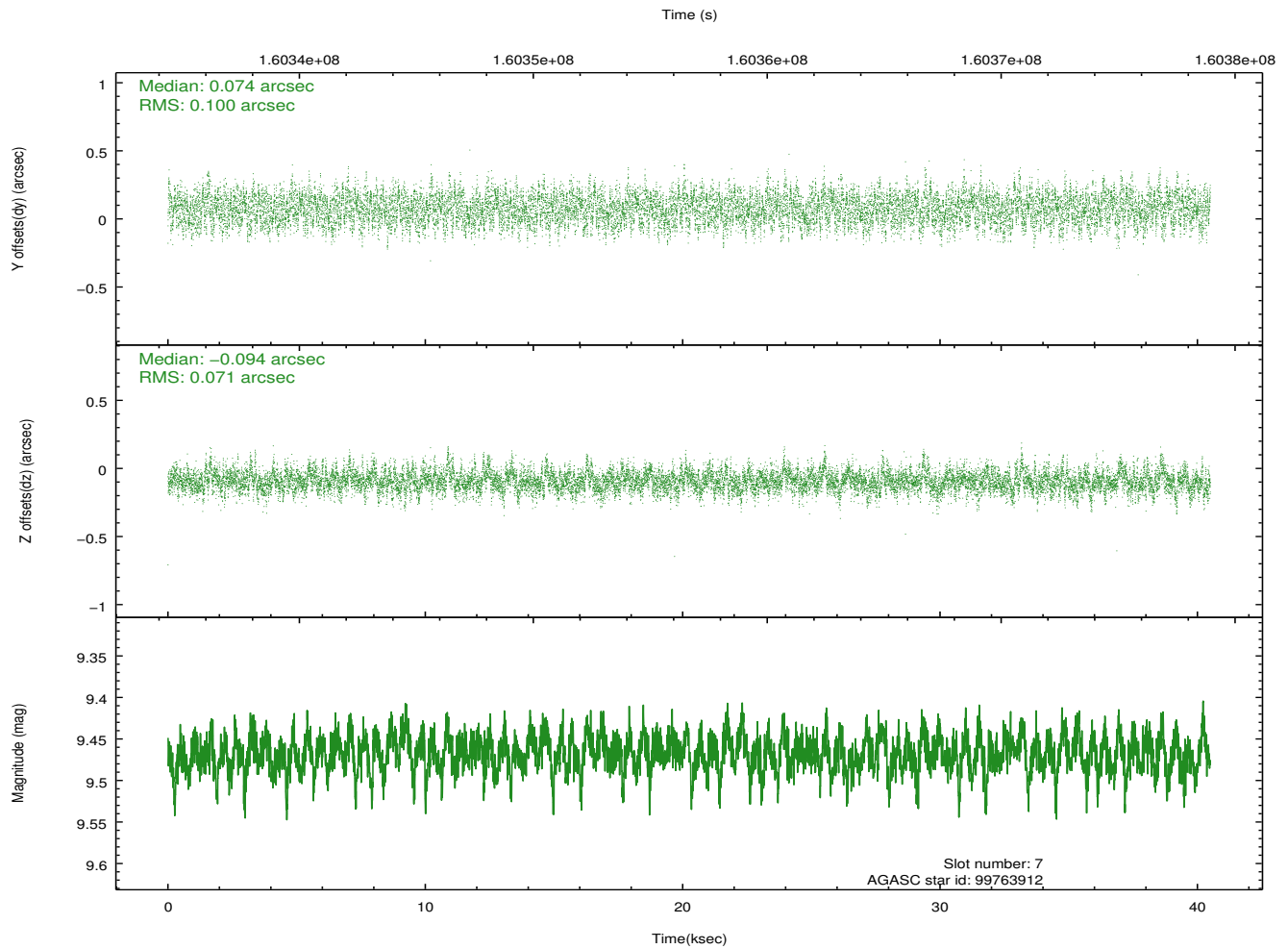
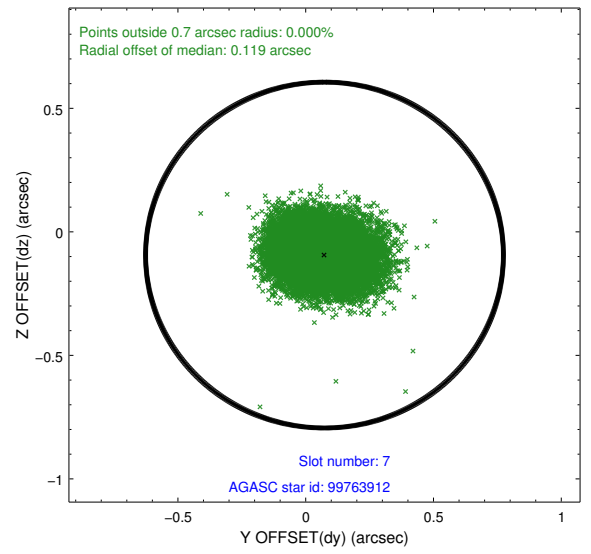
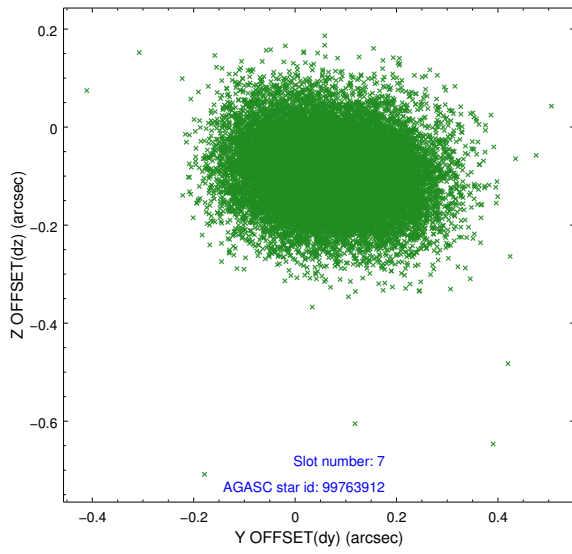
Time (s)



2.4.4 Slot 6

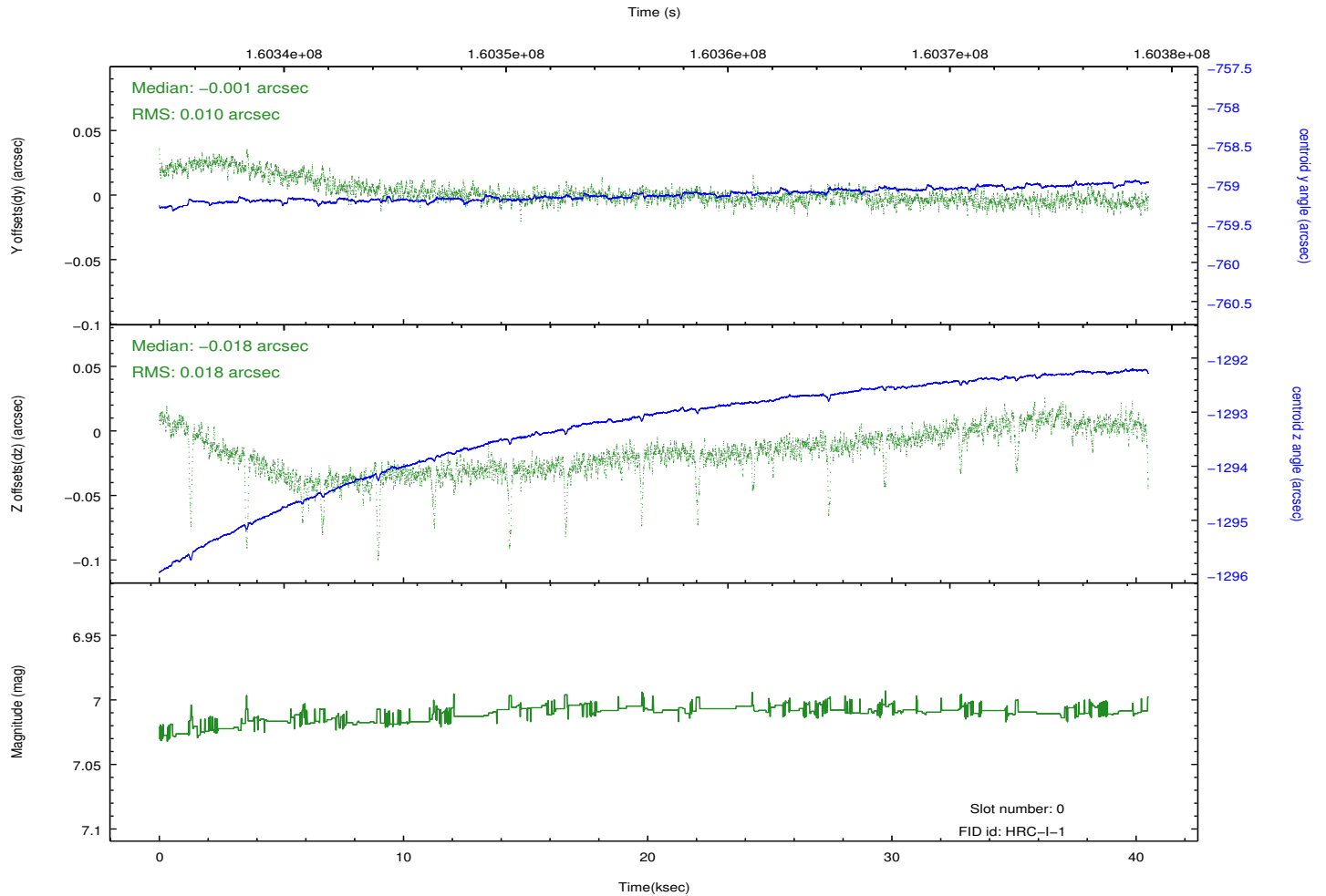
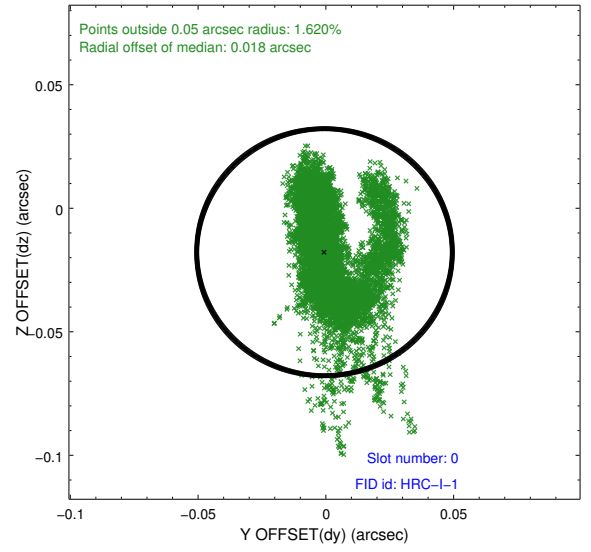
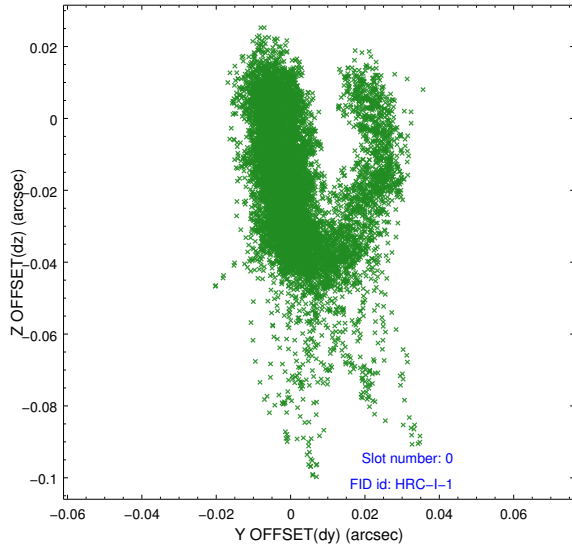


2.4.5 Slot 7

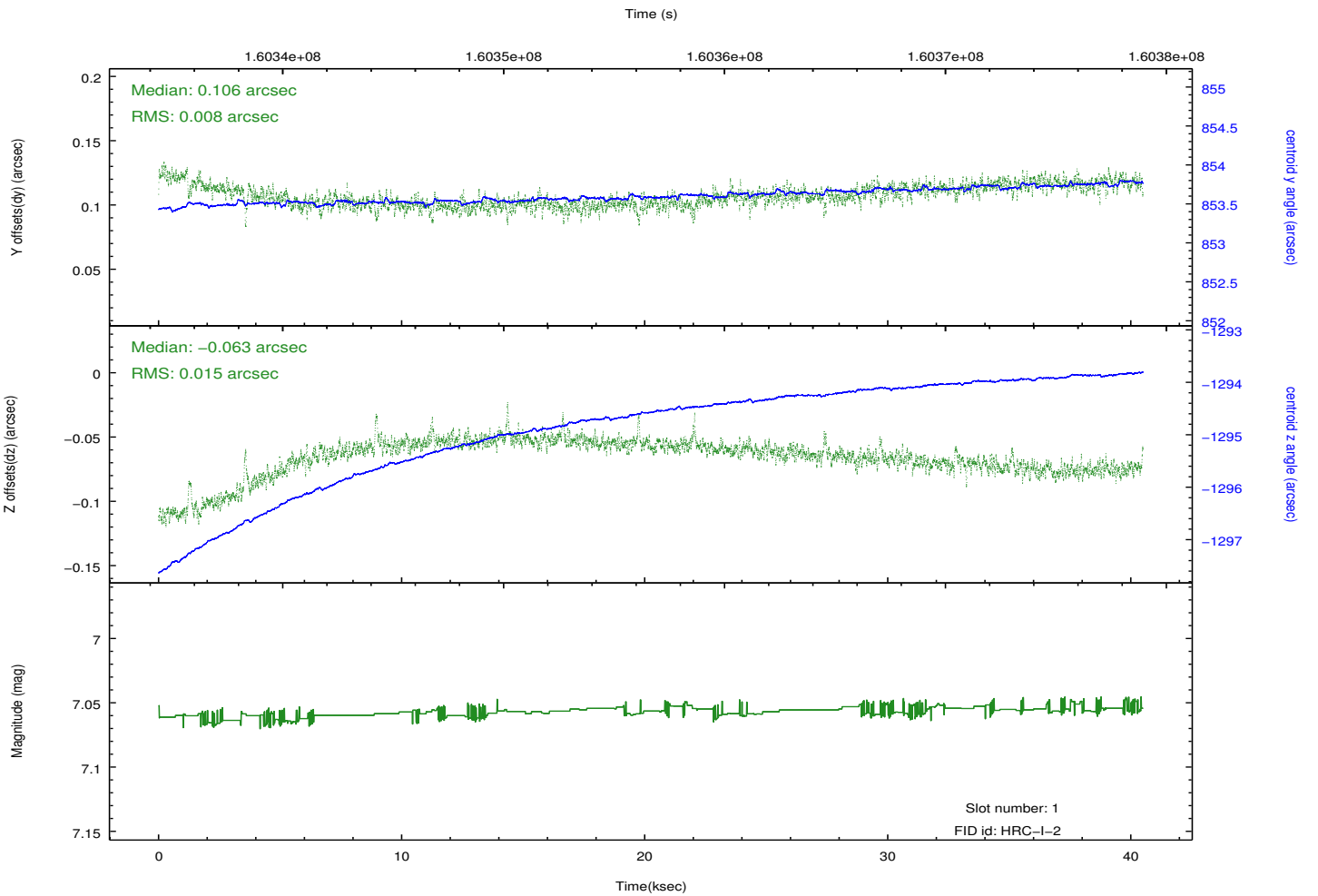
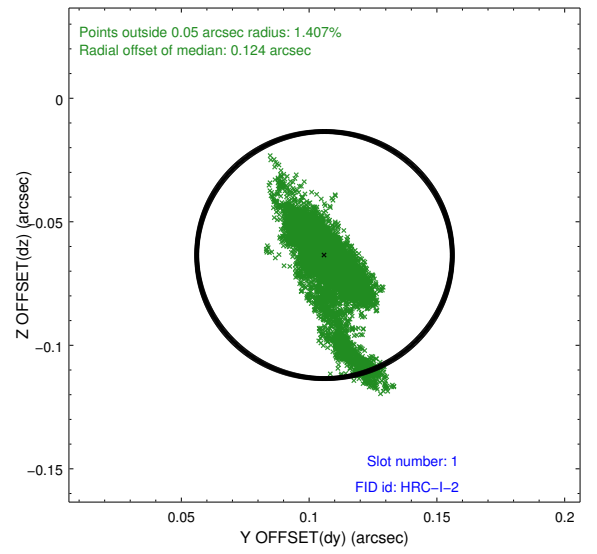
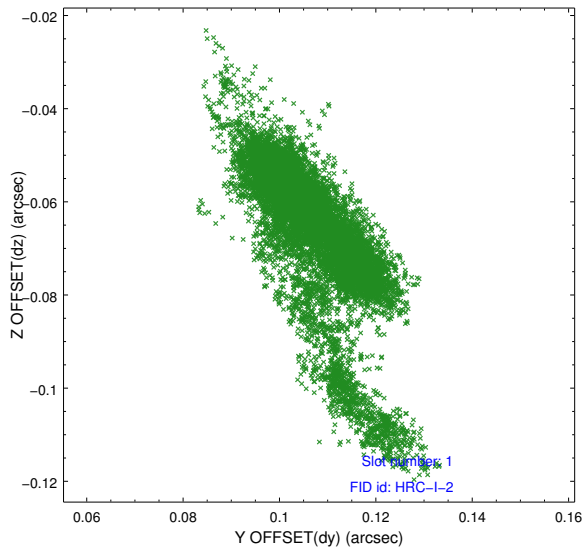


2.5 FID Slots

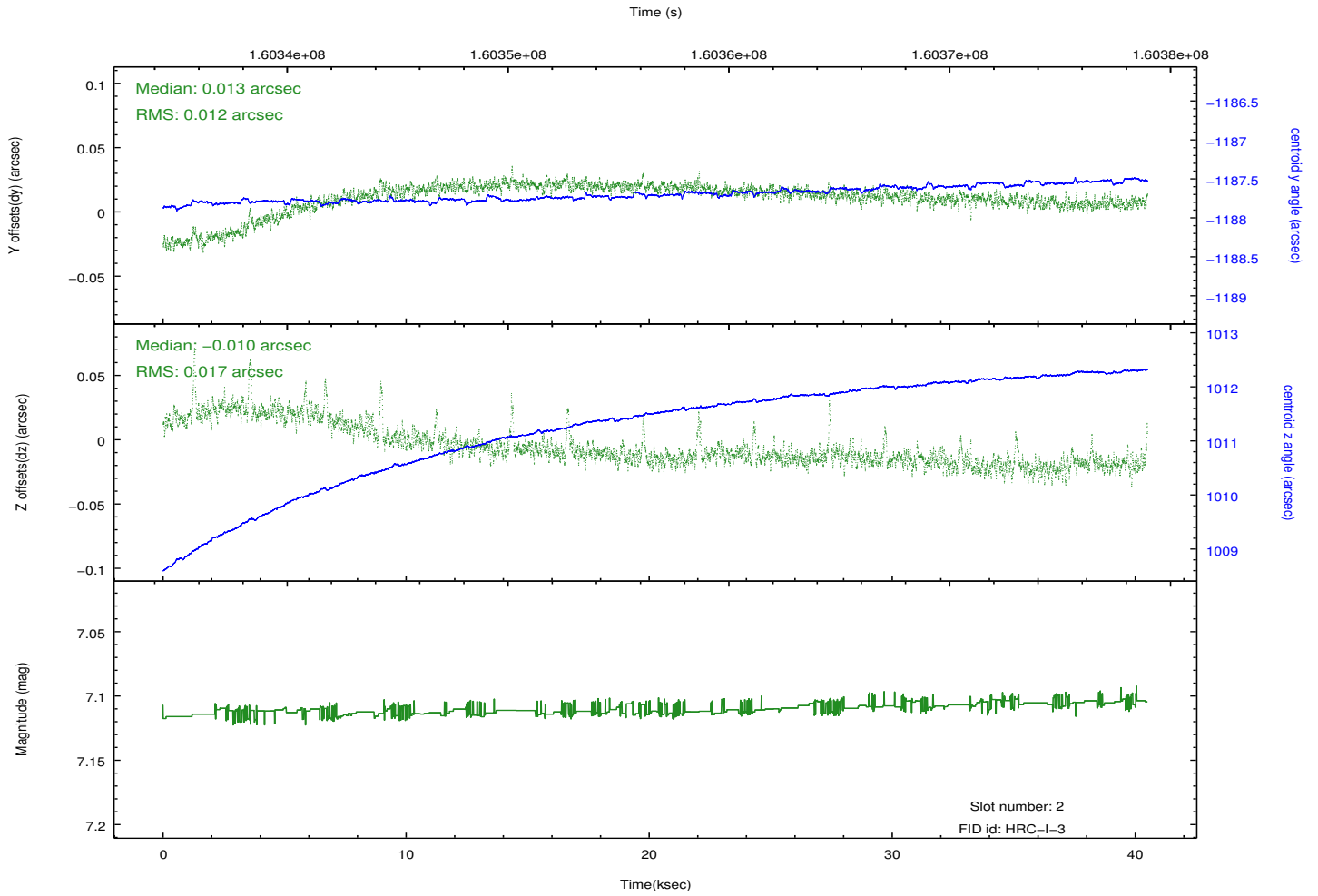
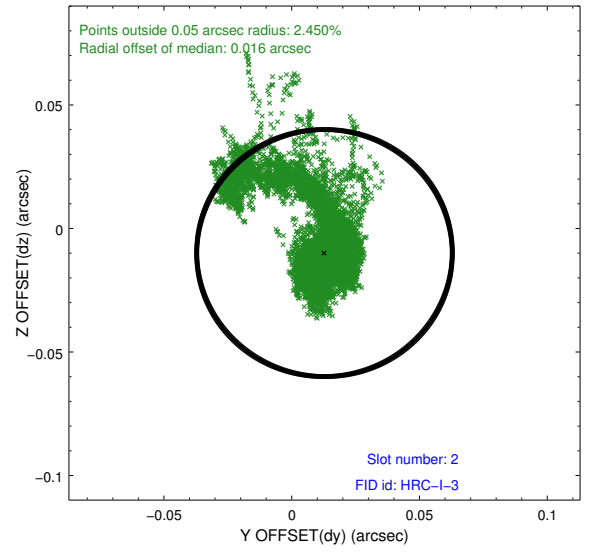
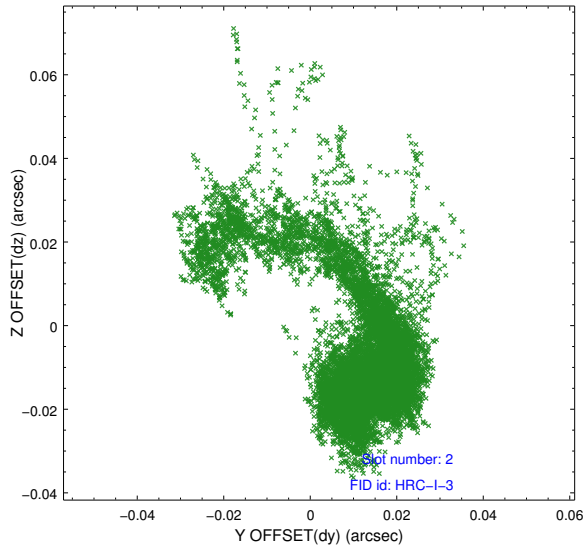
2.5.1 Slot 0



2.5.2 Slot 1



2.5.3 Slot 2



A Summary

A.1 Status

V&V Scientist	Jen Lauer
V&V Date (YYYY-MM-DD)	2012.11.01
V&V Edition	1
V&V Disposition and Status	OK
V&V Charge Time	40.24

A.2 Comments