

V&V Reference Report

L2 ASCDS Version : 8.4.5

Observation 3913 - L2 Version 3
Chandra X-Ray Center

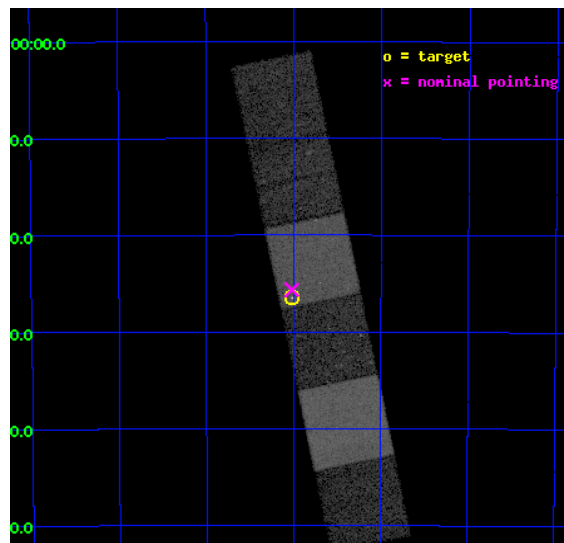
L2 Processing Date : Oct 29 2012

Contents

1	Front	2
2	OBI	3
2.1	OBI	3
2.1.1	Images	3
2.1.2	Bias	3
2.1.3	Parameters	4
2.1.4	Events	4
2.2	Compared Parameters	5
2.3	Aspect	6
2.4	Star Slots	9
2.4.1	Slot 3	9
2.4.2	Slot 4	10
2.4.3	Slot 5	11
2.4.4	Slot 6	12
2.4.5	Slot 7	13
2.5	FID Slots	14
2.5.1	Slot 0	14
2.5.2	Slot 1	15
2.5.3	Slot 2	16
A	Summary	17
A.1	Status	17
A.2	Comments	17

1 Front

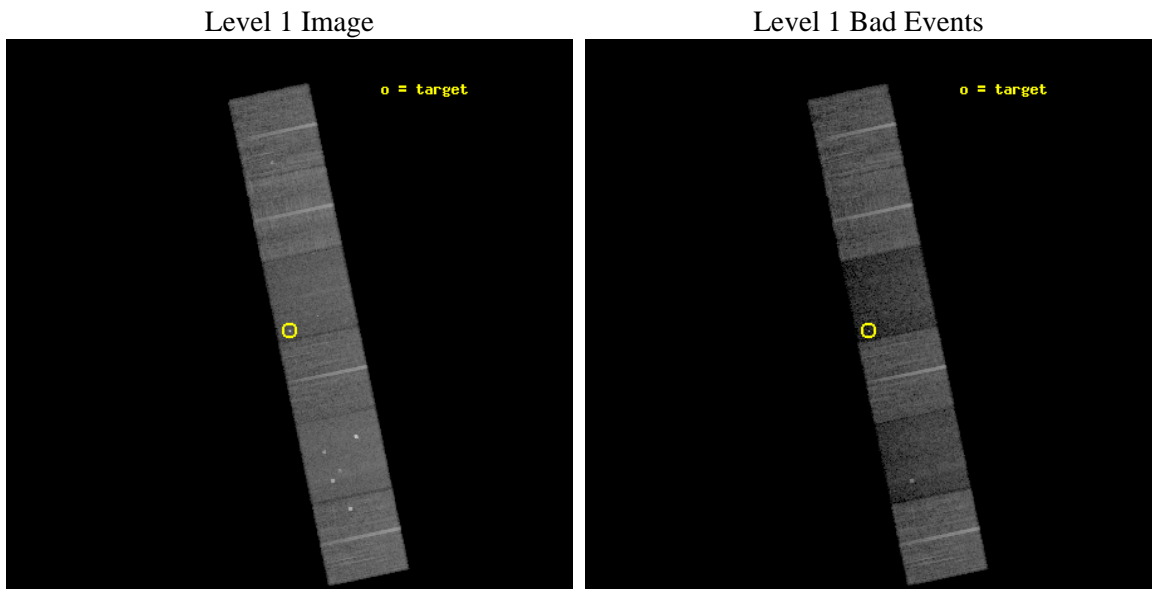
seq_num	500392	Sequence number
obs_id	3913	Observation id
title	FIRST MEASUREMENT OF THE GRAVITATIONAL REDSHIFT AT THE SURFACE OF A NEUTRON STAR	Proposal title
observer	Dr. George Pavlov	Principal investigator
object	1E 1207.4-5209	Source name
dtcycle	0	
cycle	P	events from which exps? Prim/Second/Both
ra_targ	182.503333	Observer's specified target RA [deg]
dec_targ	-52.440306	Observer's specified target Dec [deg]
ra_nom	182.50493253978	Nominal RA [deg]
dec_nom	-52.427606412679	Nominal Dec [deg]
roll_nom	258.15791352487	Nominal Roll [deg]
revision	3	Processing version of data
ontime	20009.599925458	Sum of GTIs [s]
livetime	19756.226322868	Livetime [s]
ontime4	20009.599925458	Sum of GTIs [s]
ontime5	20009.599925458	Sum of GTIs [s]
ontime6	20009.599925458	Sum of GTIs [s]
ontime7	20009.599925458	Sum of GTIs [s]
ontime8	20009.599925458	Sum of GTIs [s]
ontime9	20009.599925458	Sum of GTIs [s]
l2events	136952	Number of level 2 events



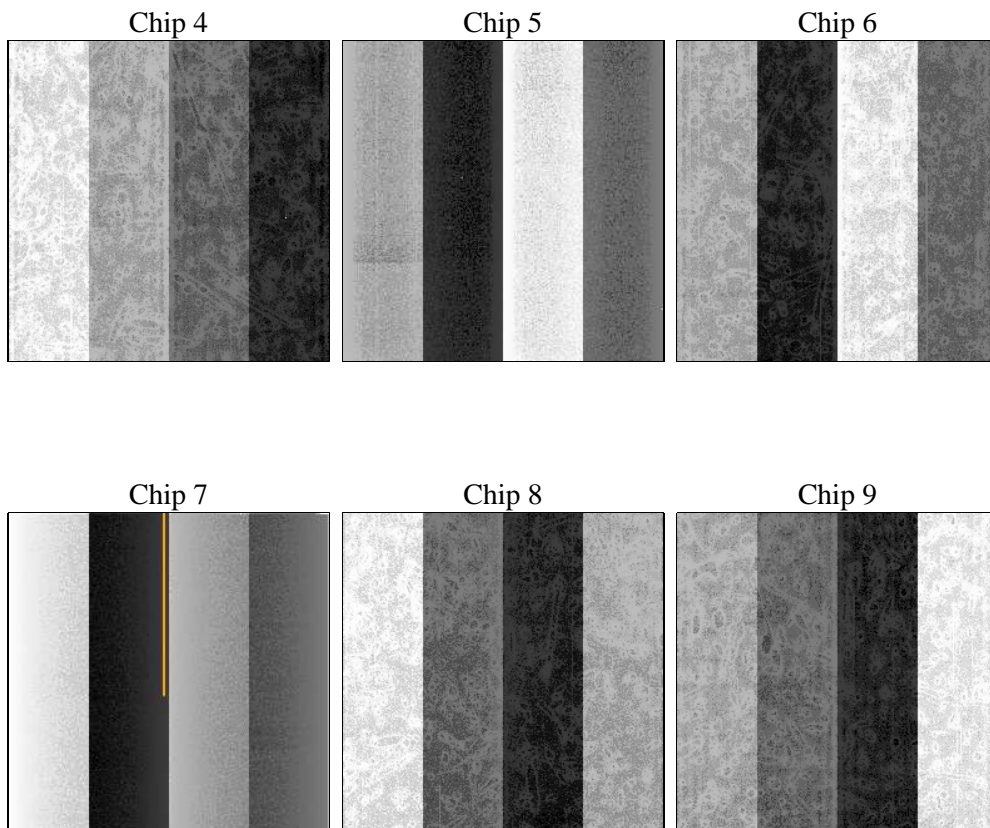
2 OBI

2.1 OBI

2.1.1 Images



2.1.2 Bias



2.1.3 Parameters

obi_num	0	Obi number	sched_exp_time	20000.000000	[s] Scheduled observation exposure time
ascdsver	8.4.5	Processing system revision	ontime	20009.599925458	Sum of GTIs [s]
caldbver	4.5.2	 	ontime4	20009.599925458	Sum of GTIs [s]
date	2012-10-29T18:10:58	Date and time of file creation	ontime5	20009.599925458	Sum of GTIs [s]
revision	3	Processing version of data	ontime6	20009.599925458	Sum of GTIs [s]
			ontime7	20009.599925458	Sum of GTIs [s]
			ontime8	20009.599925458	Sum of GTIs [s]
			ontime9	20009.599925458	Sum of GTIs [s]
			l1events	595837	Number of level 1 events

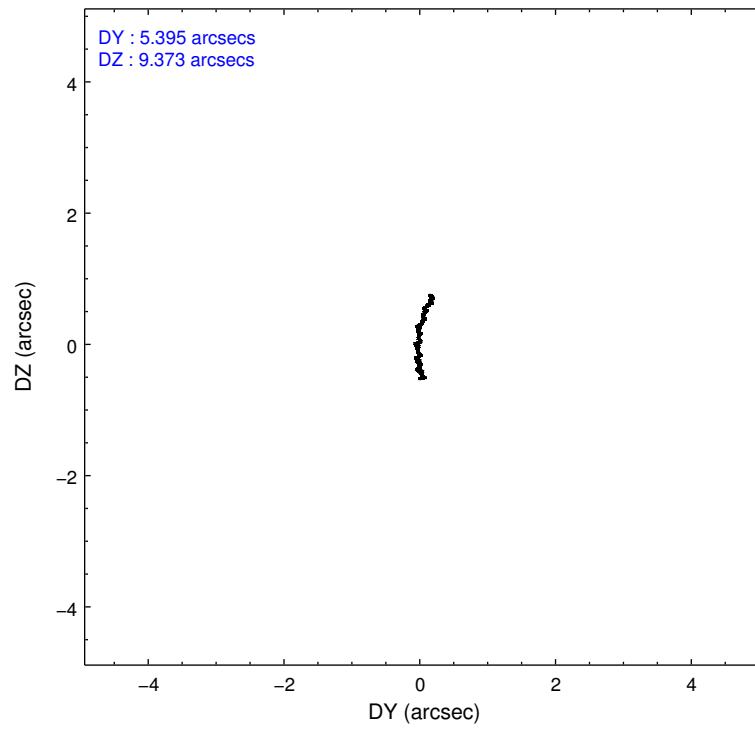
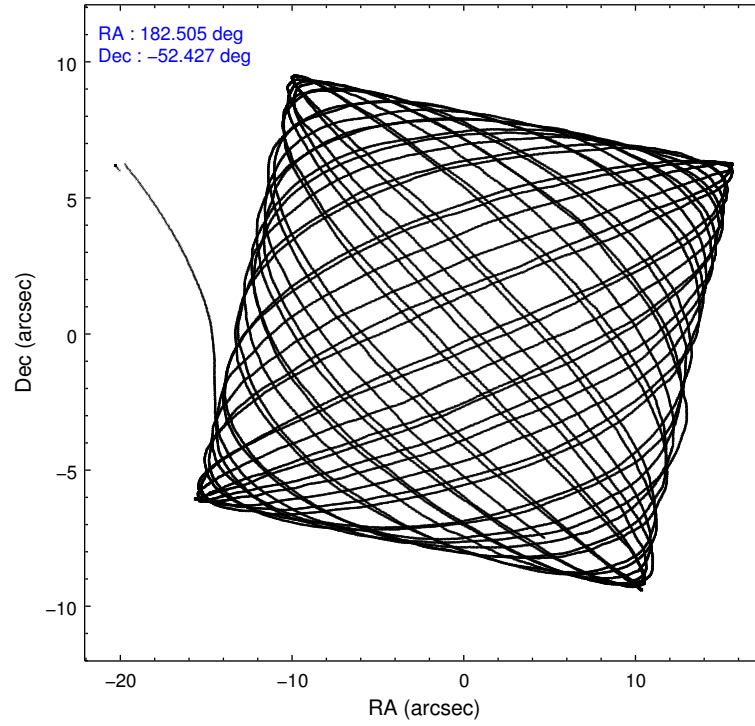
2.1.4 Events

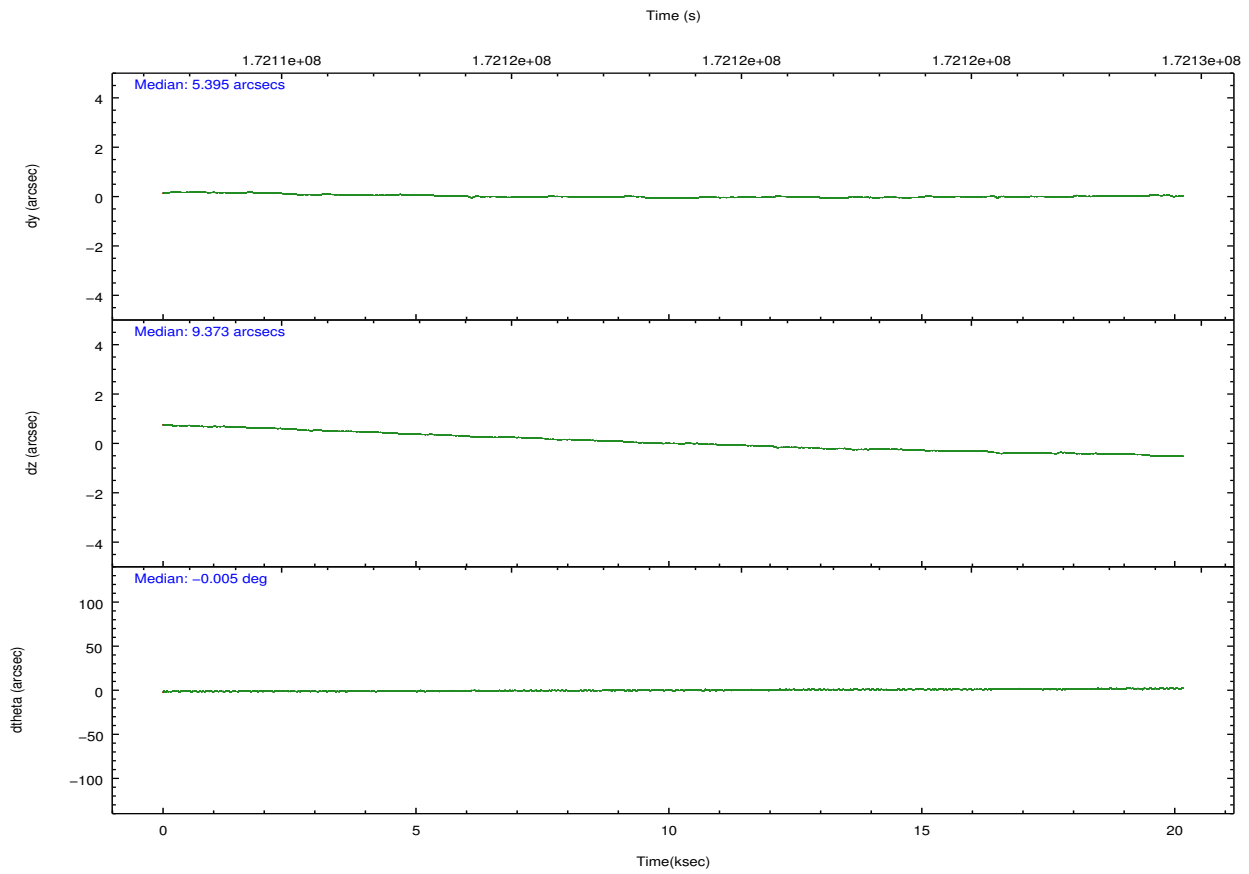
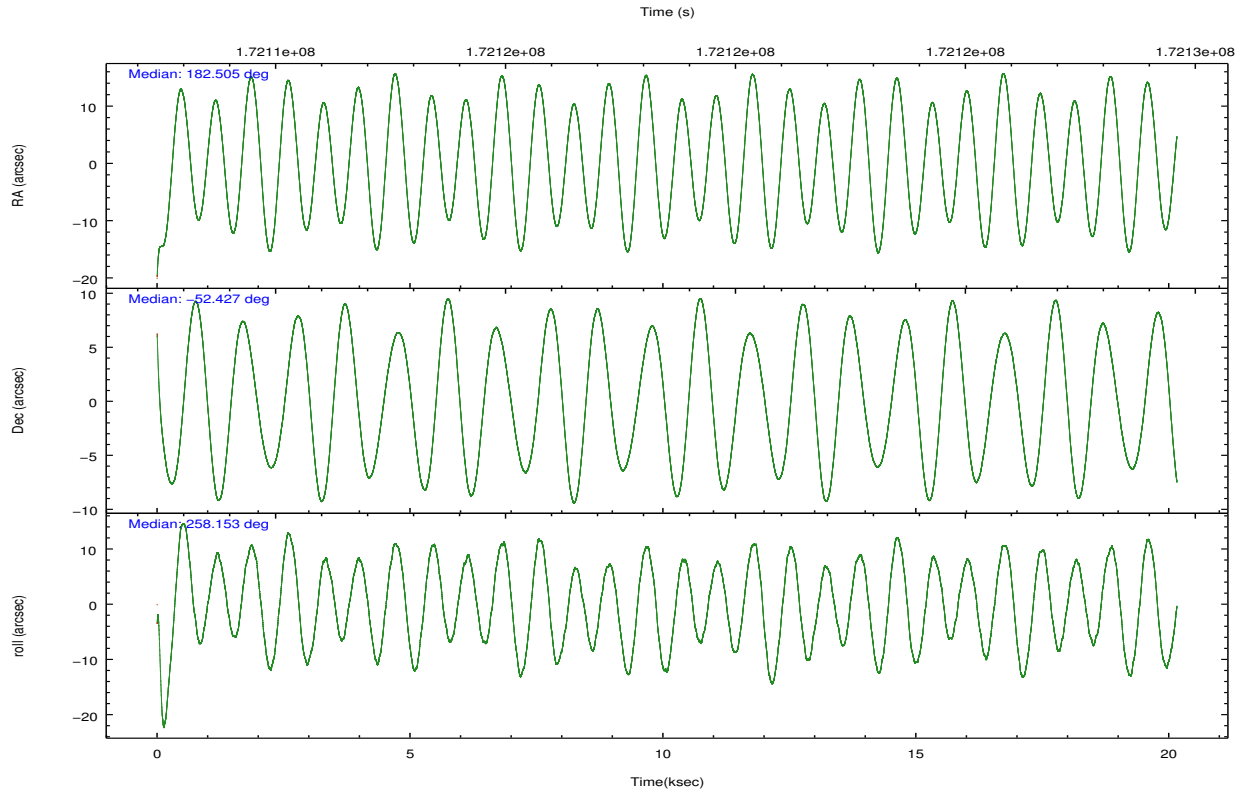
	ccd 4	ccd 5	ccd 6	ccd 7	ccd 8	ccd 9		ccd 4	ccd 5	ccd 6	ccd 7	ccd 8	ccd 9
level 1 events	111789	102942	93740	79914	115418	92034	grade 0 events	7879	12141	4790	6398	8724	4790
rejected events	97258	41110	81998	34338	86392	80400		7%	11%	5%	8%	7%	5%
rejected %	87%	39%	87%	42%	74%	87%	grade 1 events	98	177	45	202	102	45
								0%	0%	0%	0%	0%	0%
							grade 2 events	2534	17622	2295	10093	6447	2170
								2%	17%	2%	12%	5%	2%
							grade 3 events	1177	3209	1167	4745	3145	1184
								1%	3%	1%	5%	2%	1%
							grade 4 events	1138	2988	1131	4638	2922	1149
								1%	2%	1%	5%	2%	1%
							grade 5 events	2482	8221	2446	8171	3939	2741
								2%	7%	2%	10%	3%	2%
							grade 6 events	1815	25895	2367	19712	7790	2345
								1%	25%	2%	24%	6%	2%
							grade 7 events	94666	32689	79499	25955	82349	77610
								84%	31%	84%	32%	71%	84%

2.2 Compared Parameters

Parameter	Planned	Actual	Parameter	Planned	Actual
Instrument	ACIS	ACIS	Obspar format version number	7	7
Detector	ACIS-456789	ACIS-456789	Obspar file type	PREDICTED	ACTUAL
Grating	NONE	NONE	Obspar update status	NONE	UPDATED
Data mode	FAINT	FAINT	Number of optional ACIS chips dropped	0	0
Observation mode	POINTING	POINTING	On-chip summing requested	N	N
[deg] Pointing RA	182.490479	182.504932539783	Subarray requested	NONE	NONE
[deg] Pointing Dec	-52.401836	-52.42760641267948	Alternating exposures requested	N	N
[deg] Pointing Roll	257.989821	258.1579135248719	[s] Primary exposure time	0.000000	3.2
[mm] SIM focus pos	-0.684267	-0.6828225247311905			
[mm] SIM defocus	0	0.001444936568705701			
[mm] SIM translation stage pos	-182.132523	-182.1370004450064			
[mm] SIM translation stage offset	-8	-7.995522138001405			
[s] Observation start time (MET)	172108595.184000	172107609.32174			
Observation start date	2003-06-15T23:55:31	2003-06-15T23:40:09			
[s] Observation end time (MET)	172128595.184000	172128991.84764			
Observation end date	2003-06-16T05:28:51	2003-06-16T05:36:31			
Read mode	TIMED	TIMED			

2.3 Aspect



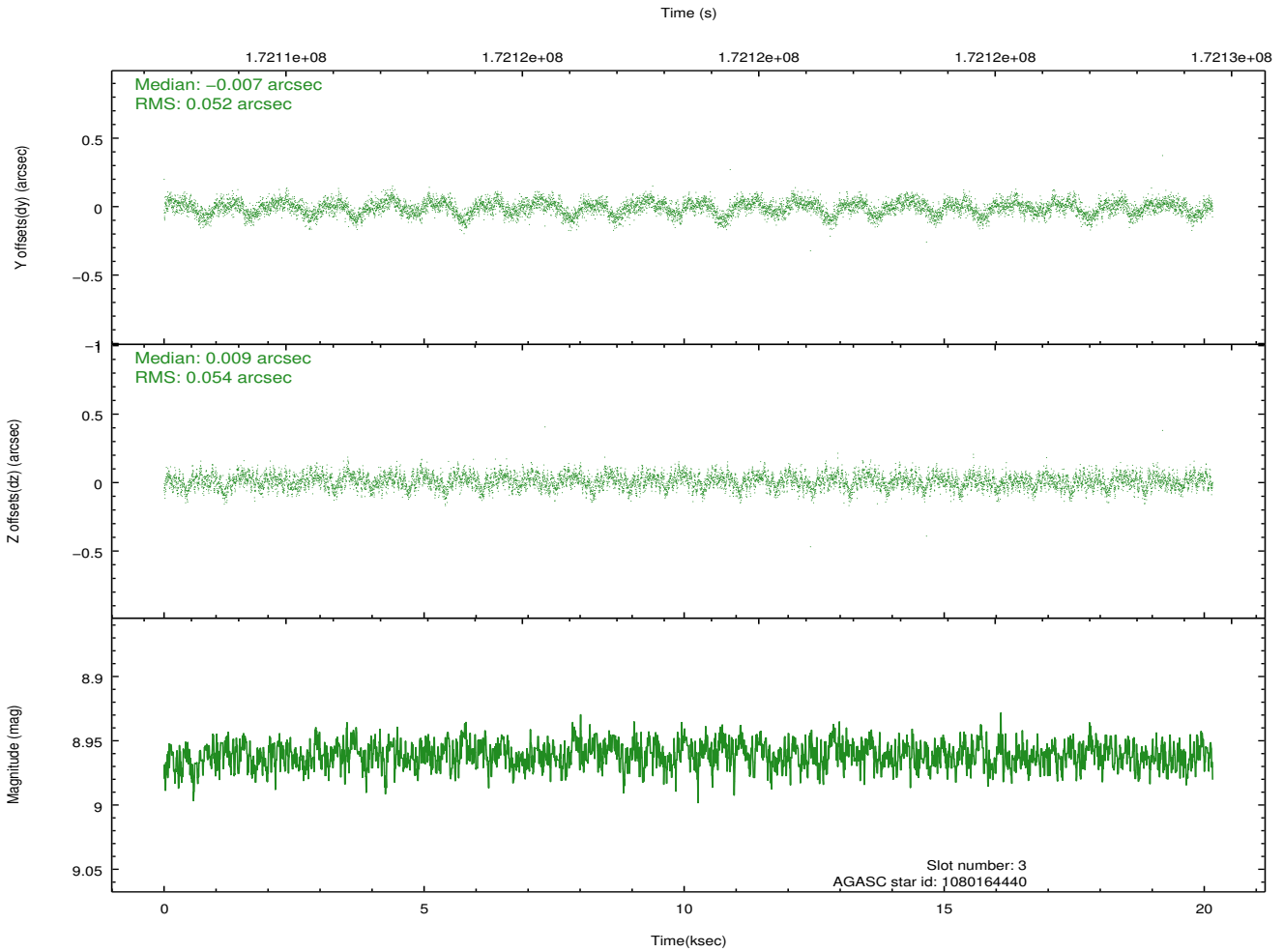
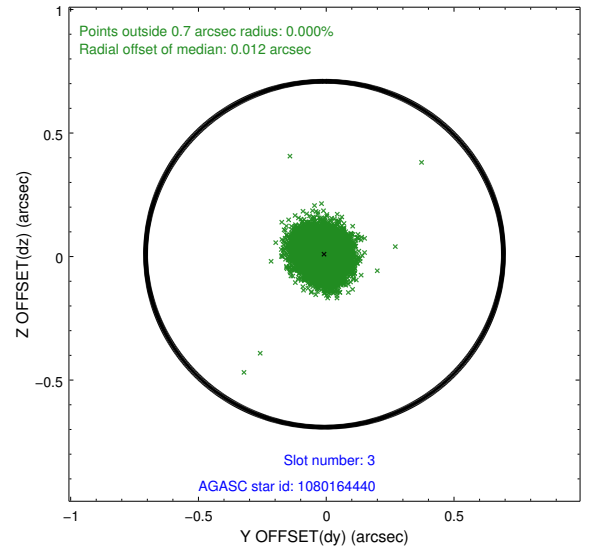
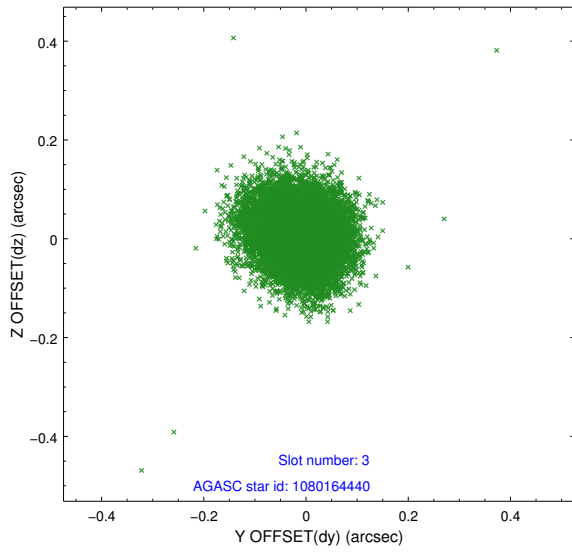


Slot Statistics

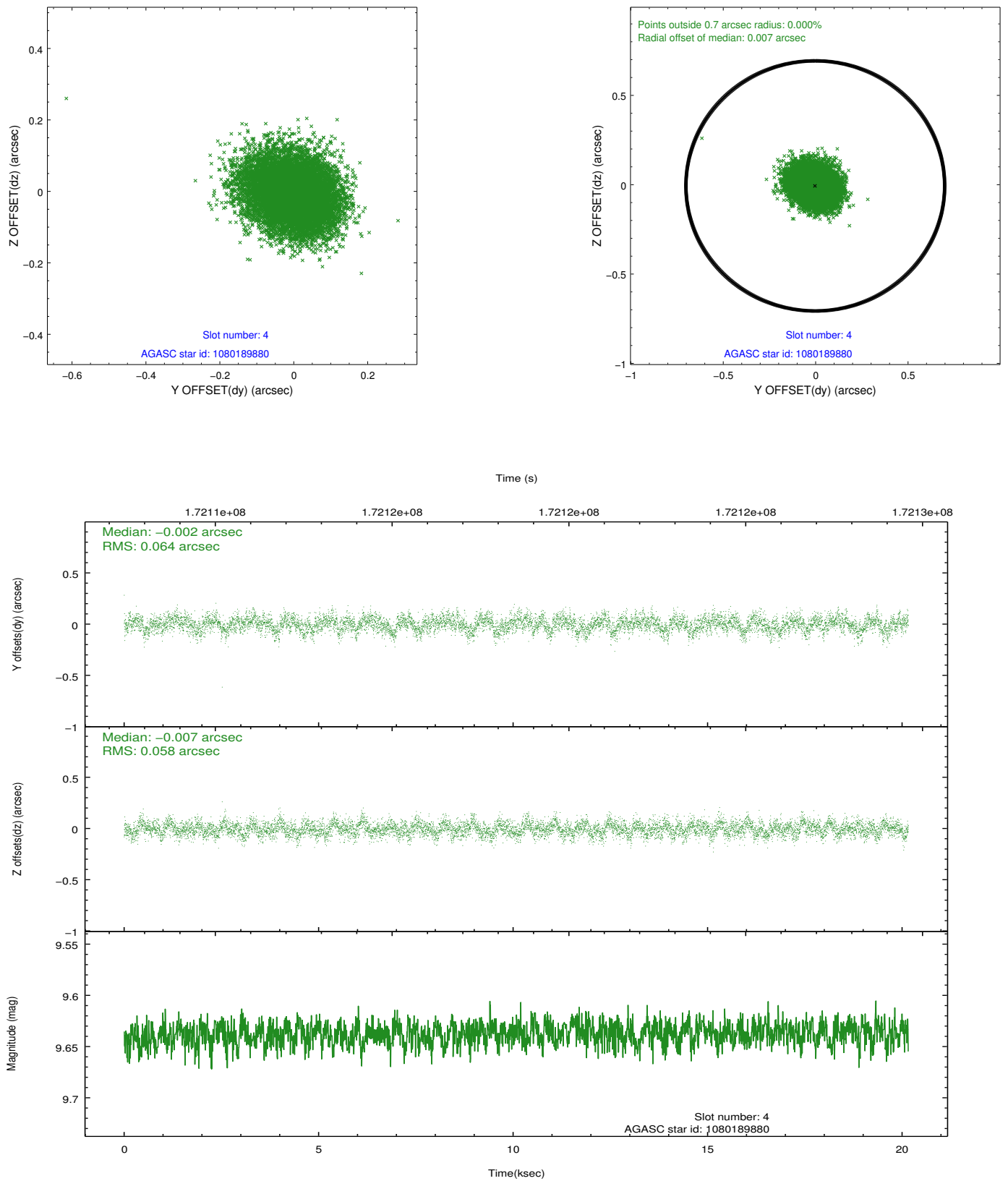
slot	status	id	mag	n_pts	med_dy	med_dz	dr1	dr2	ra	dec	mean_y	mean_z
0	FID	ACIS-S-1	7.19	4918	0.025	0.111	0.019	0.027	0.000000	0.000000	938.50	-1890.89
1	FID	ACIS-S-4	7.17	4917	0.083	-0.085	0.016	0.022	0.000000	0.000000	2156.07	12.83
2	FID	ACIS-S-5	7.23	4918	-0.134	-0.015	0.010	0.016	0.000000	0.000000	-1810.29	6.71
3	GUIDE	1080164440	8.96	9833	-0.007	0.009	0.080	0.126	181.986340	-52.264623	-247.76	-1188.14
4	GUIDE	1080189880	9.64	9832	-0.002	-0.007	0.092	0.151	182.794721	-51.898848	-1910.02	284.57
5	GUIDE	1131421616	9.21	9834	0.045	0.096	0.082	0.132	182.273623	-52.784412	1446.33	-174.58
6	GUIDE	1131423616	8.85	9835	0.024	-0.056	0.068	0.110	182.073492	-52.590429	857.05	-749.91
7	GUIDE	1131424824	9.25	9826	-0.055	-0.039	0.075	0.122	181.758646	-52.547110	853.41	-1456.29

2.4 Star Slots

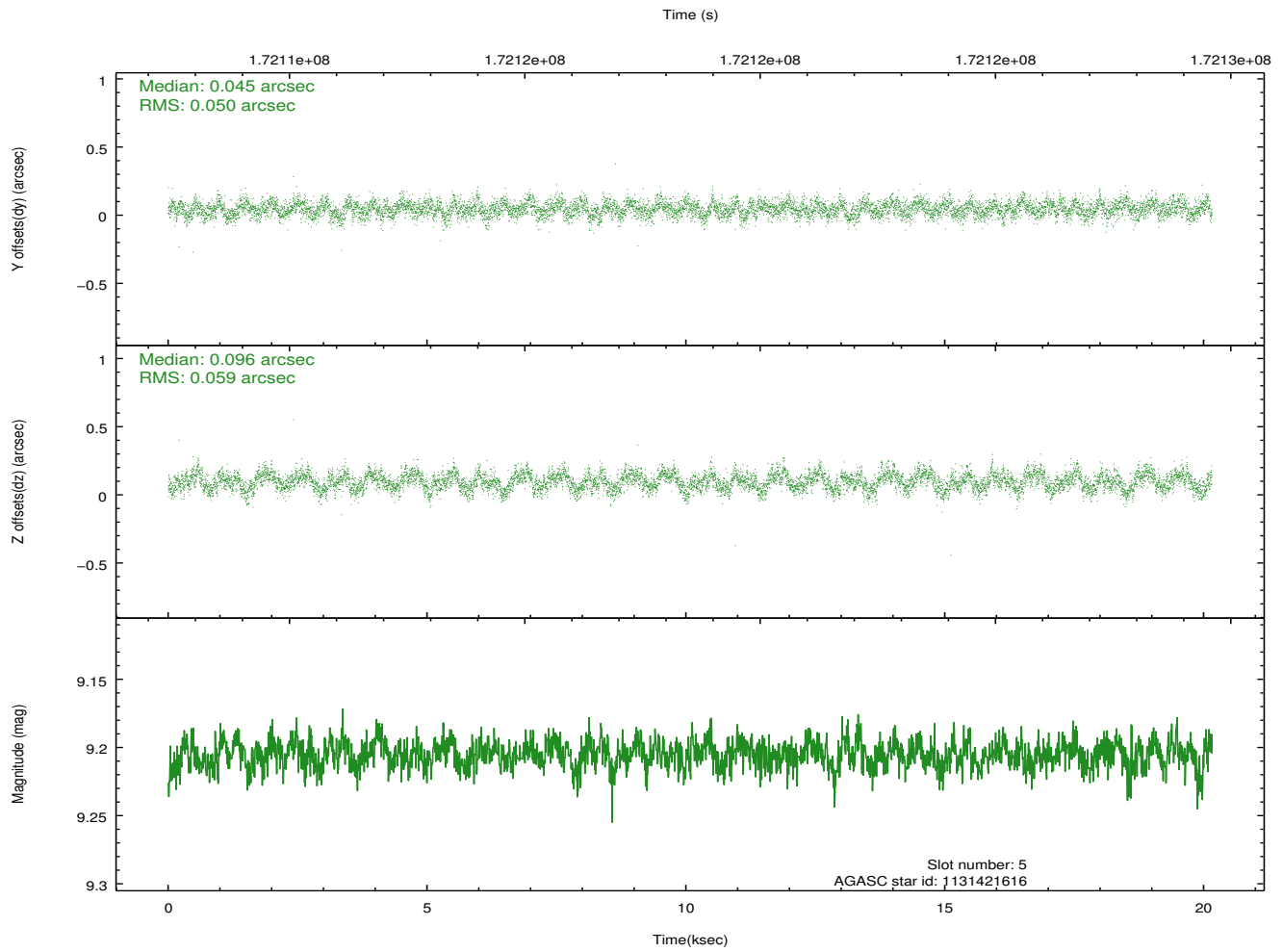
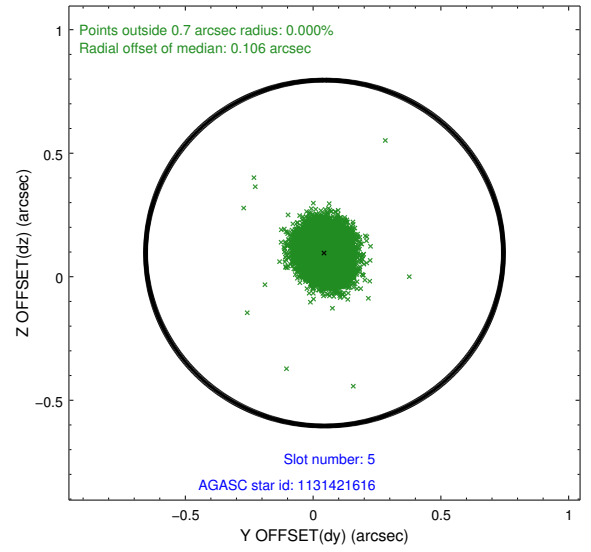
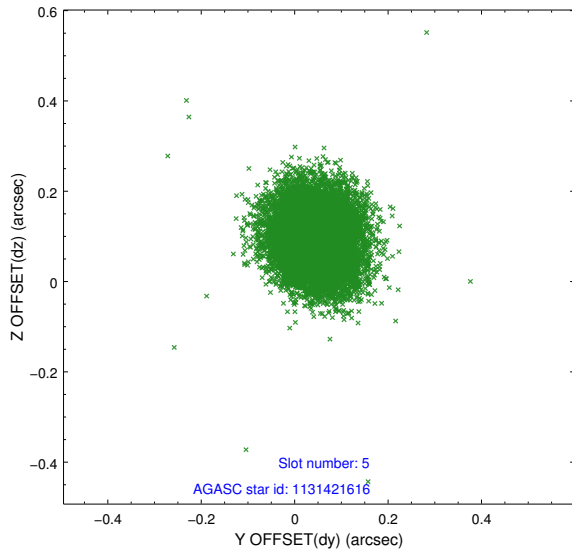
2.4.1 Slot 3



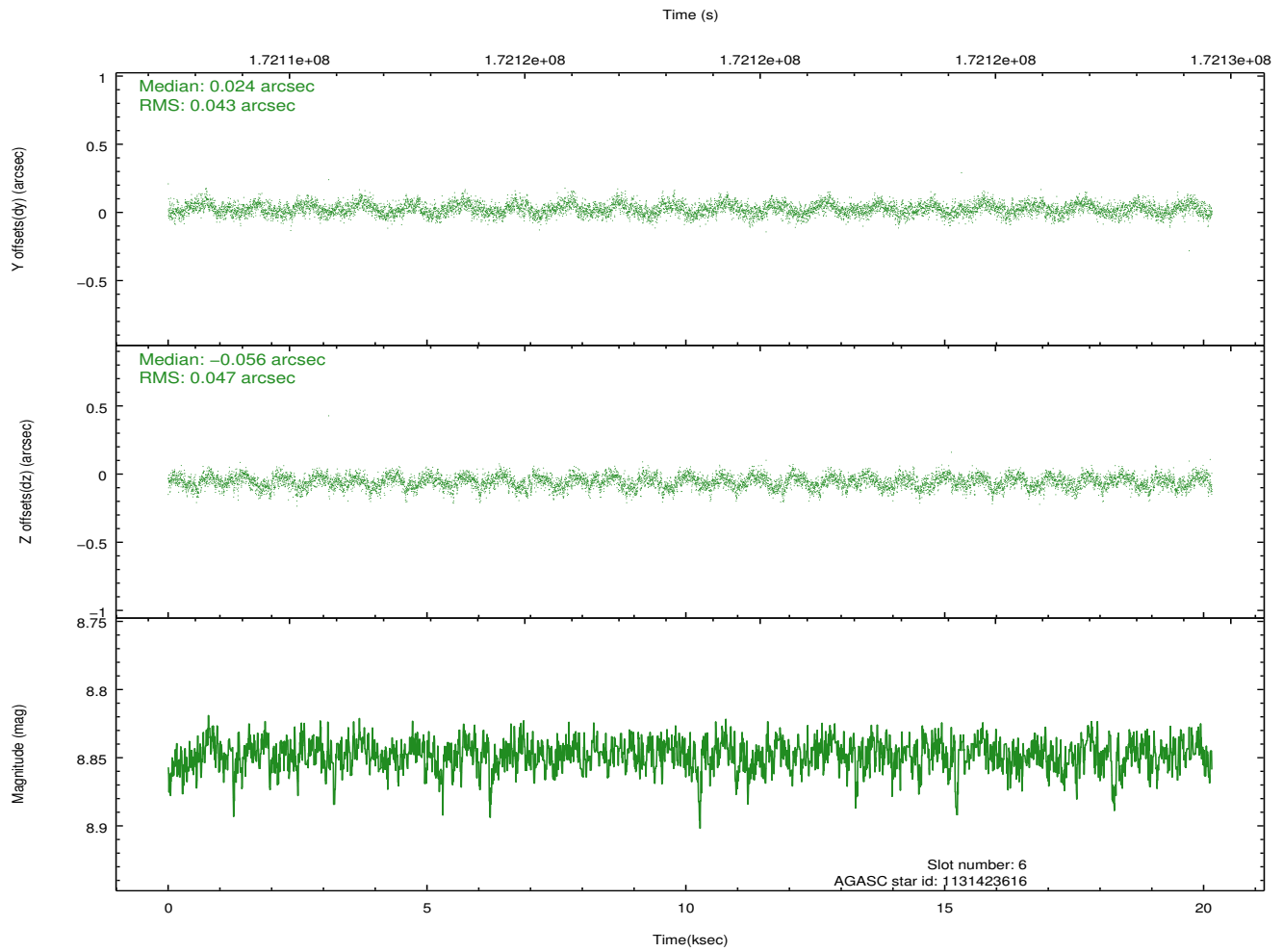
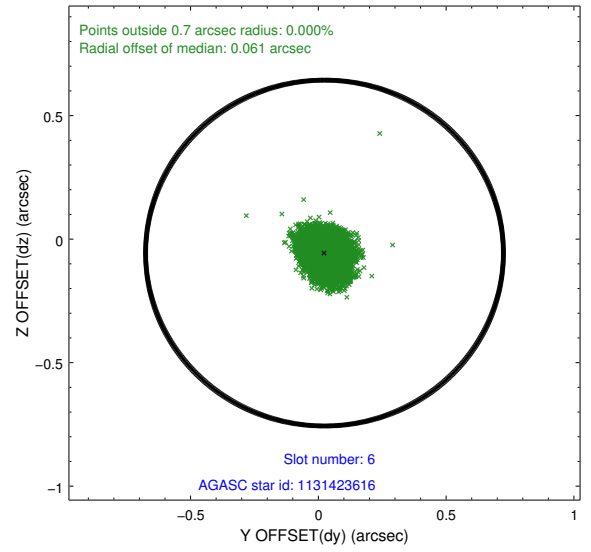
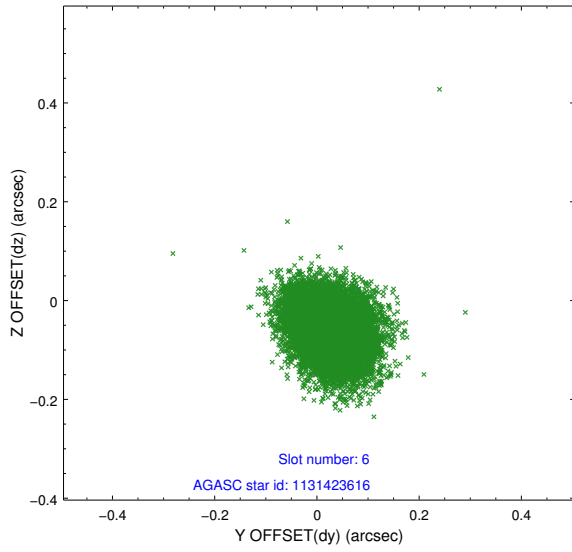
2.4.2 Slot 4



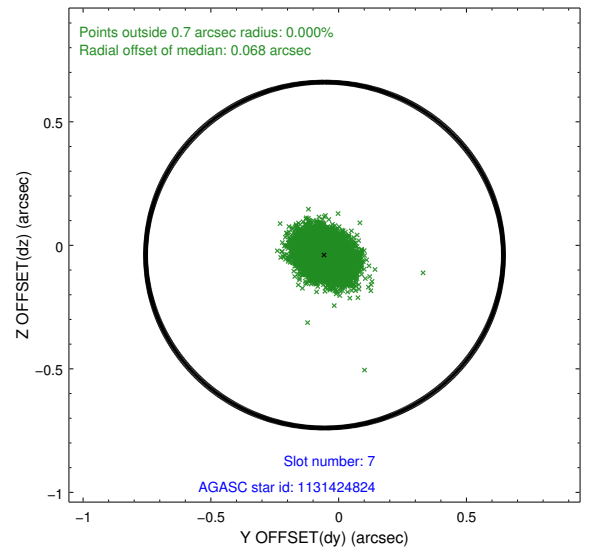
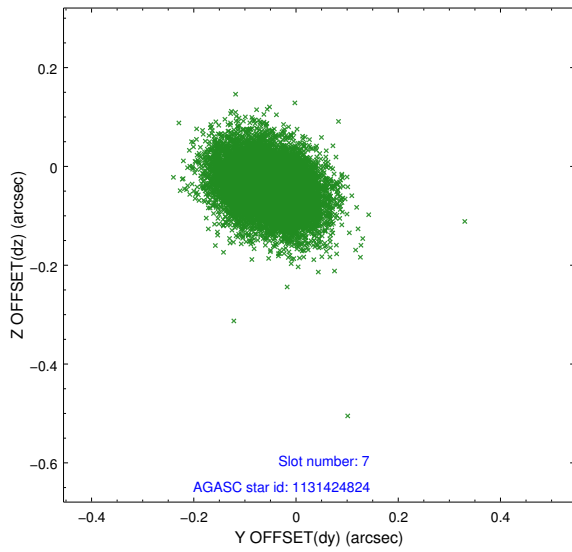
2.4.3 Slot 5



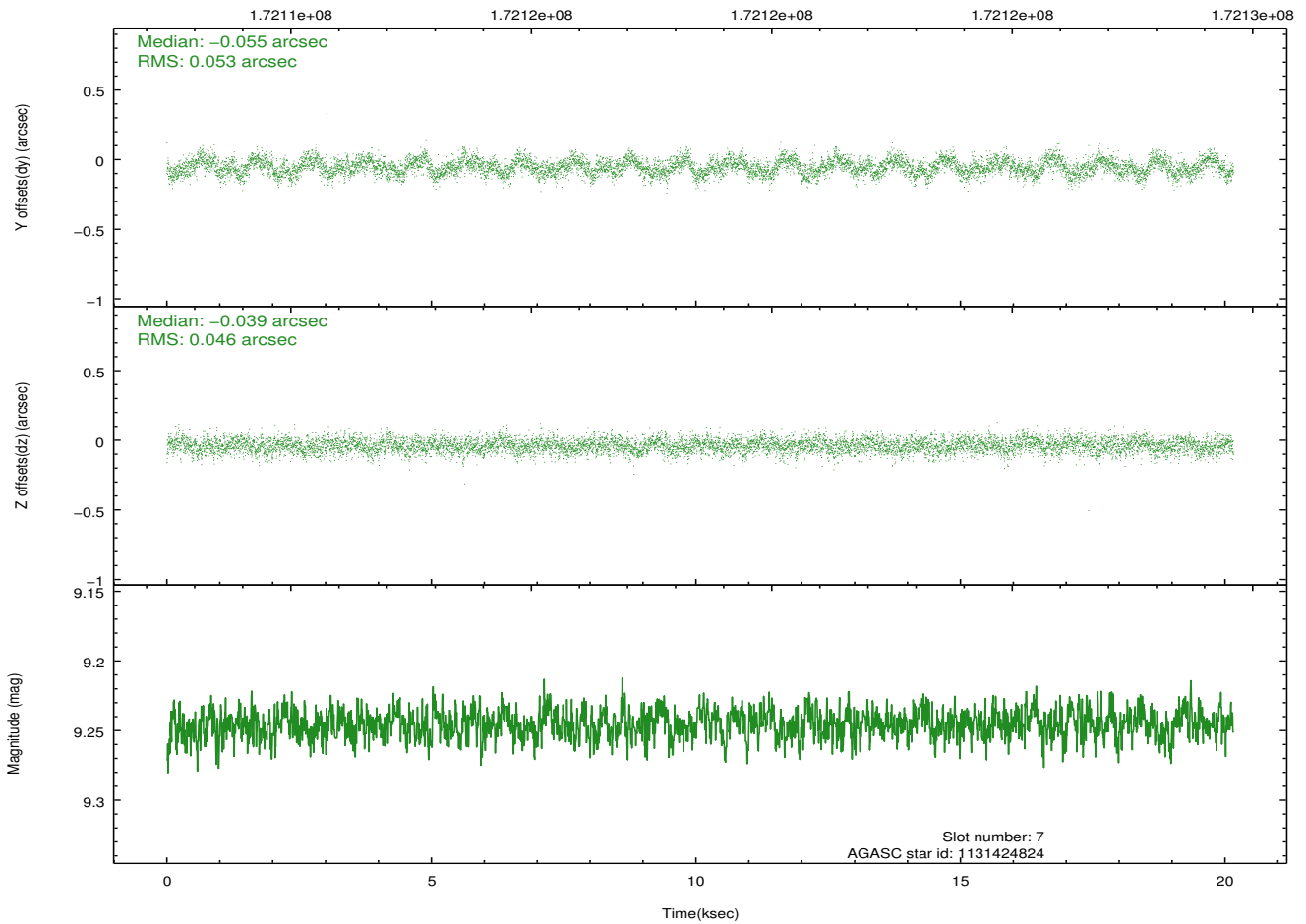
2.4.4 Slot 6



2.4.5 Slot 7

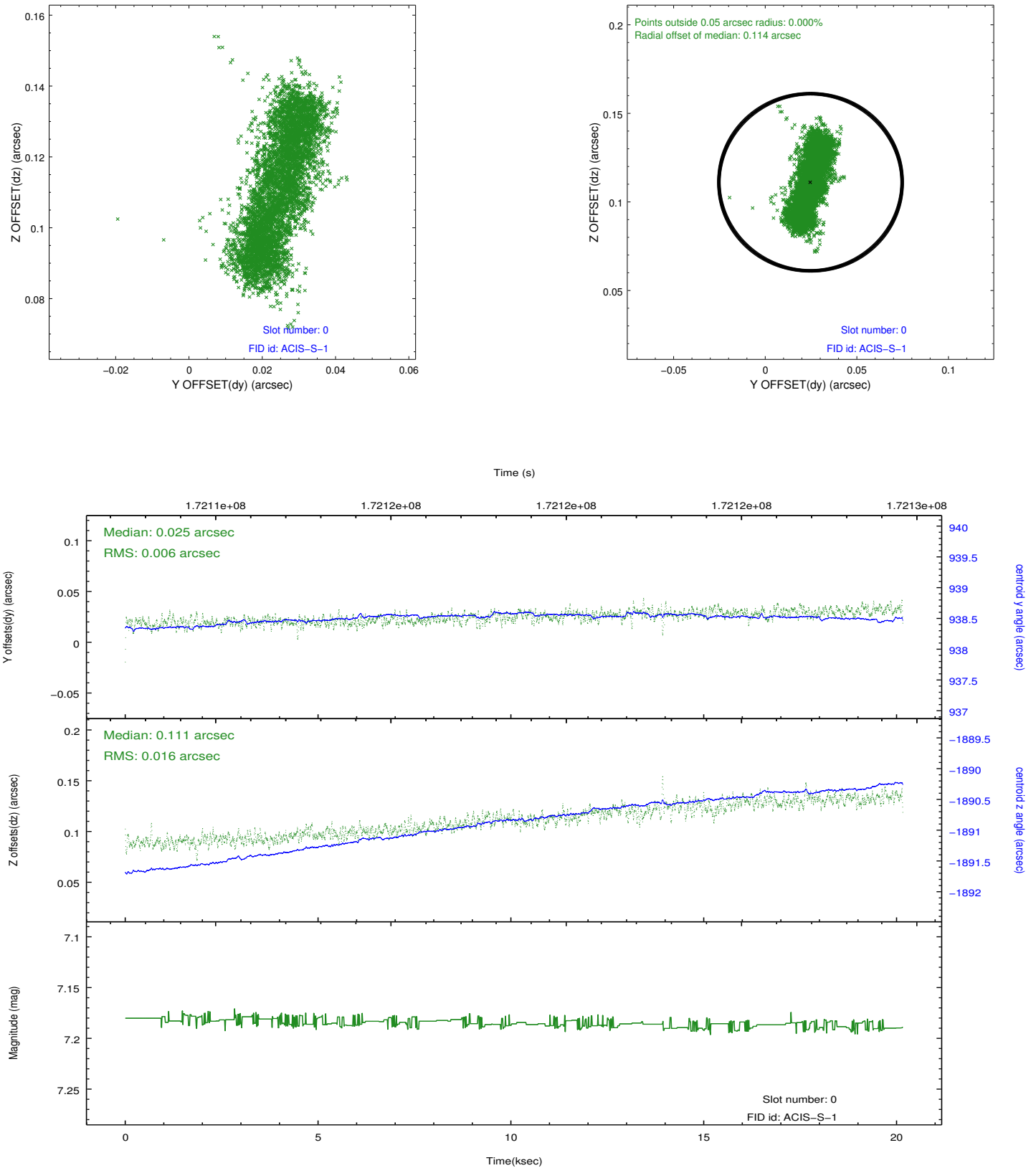


Time (s)

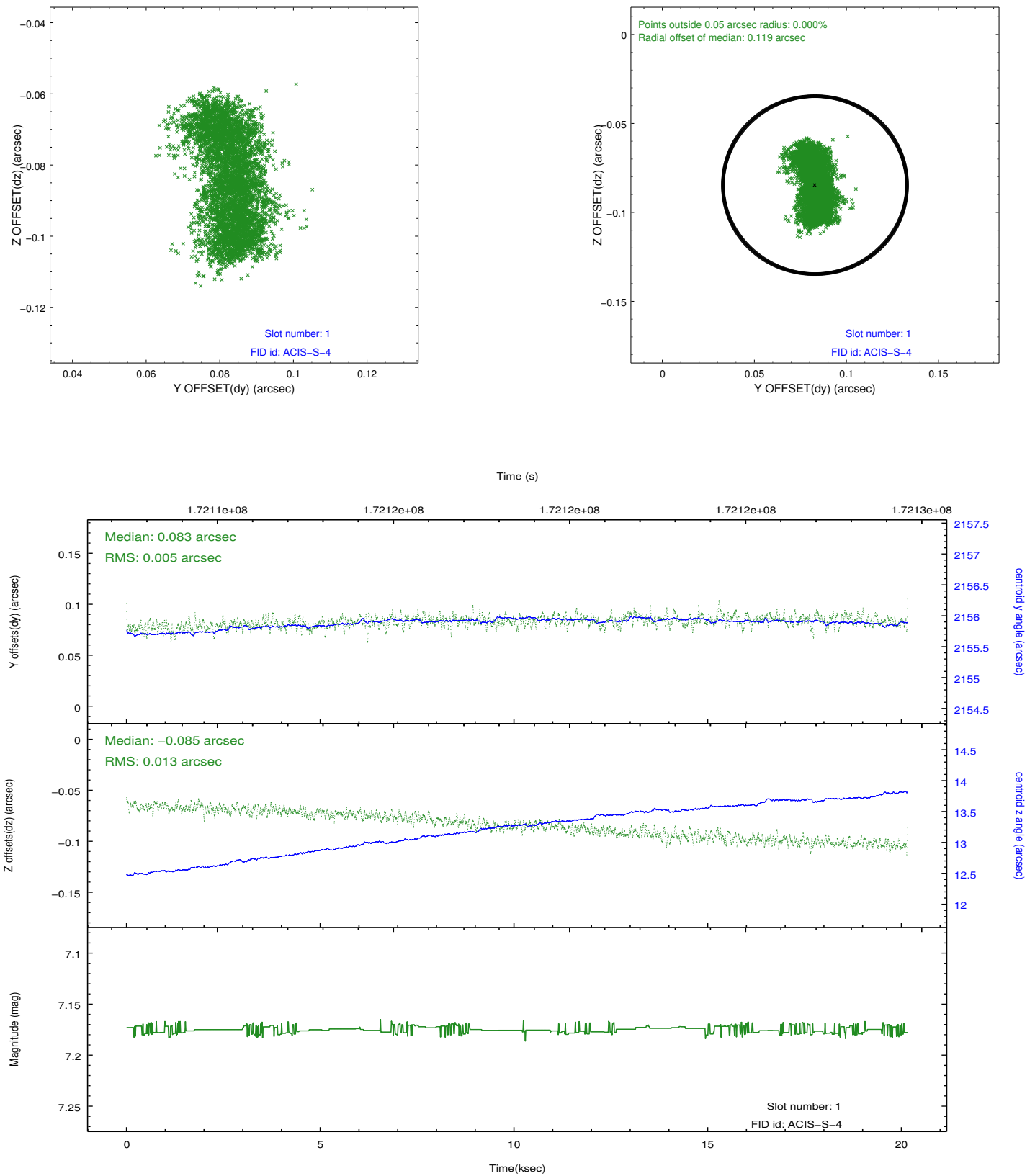


2.5 FID Slots

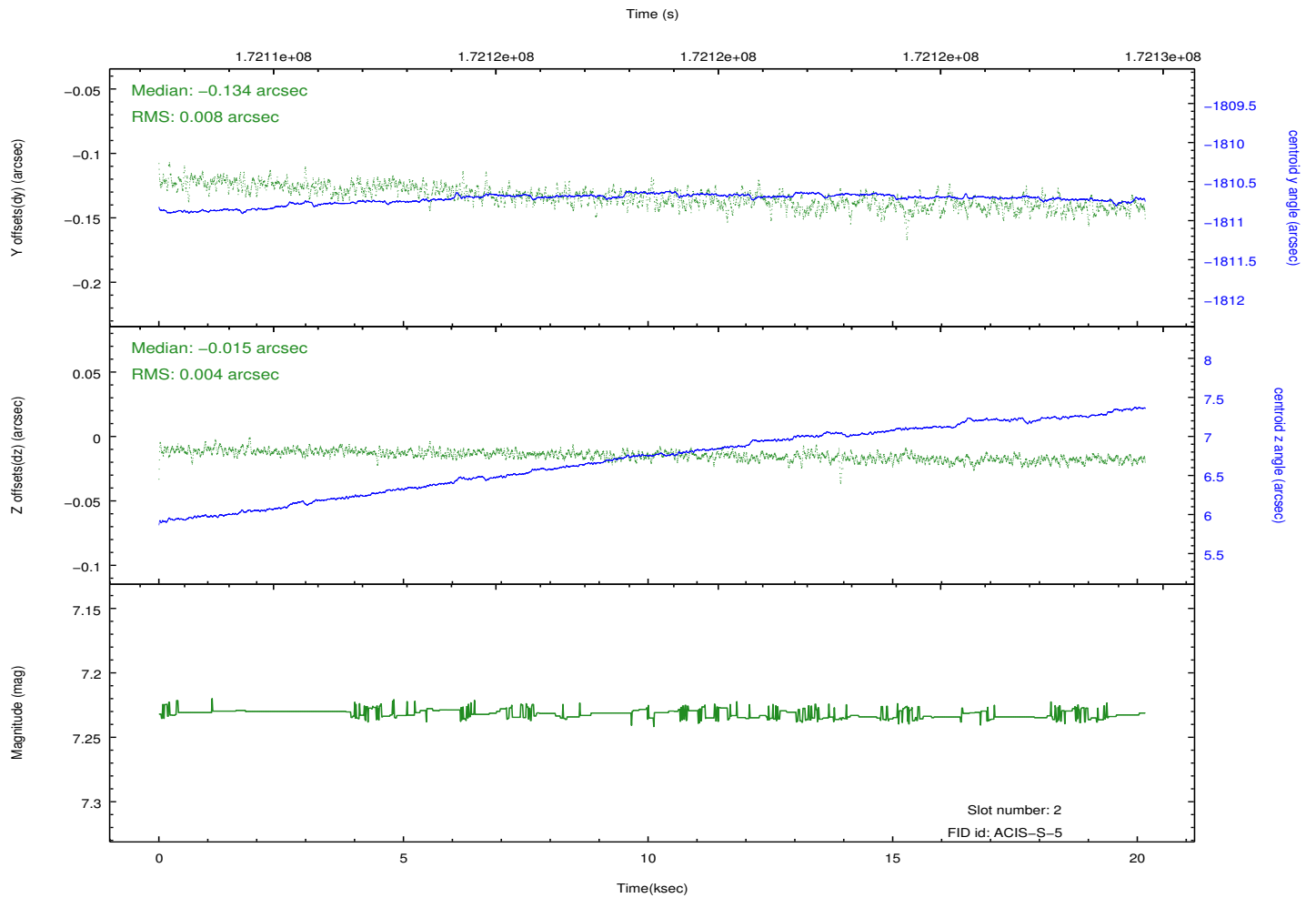
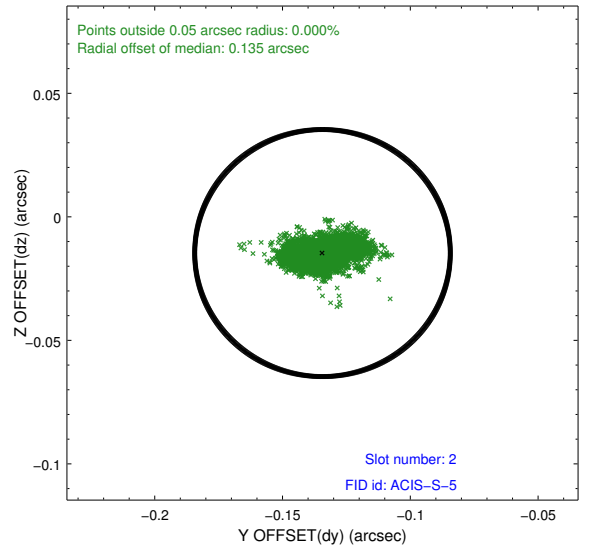
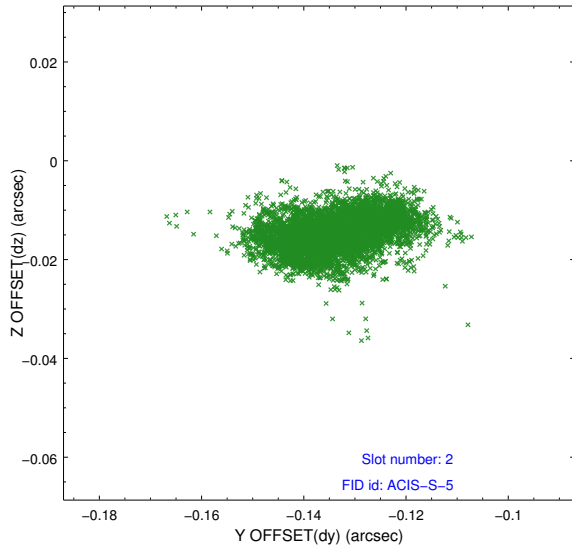
2.5.1 Slot 0



2.5.2 Slot 1



2.5.3 Slot 2



A Summary

A.1 Status

V&V Scientist	Jen Lauer
V&V Date (YYYY-MM-DD)	2012.11.15
V&V Edition	1
V&V Disposition and Status	OK
V&V Charge Time	20.012

A.2 Comments