

V&V Reference Report

L2 ASCDS Version : 8.4.5

Observation 3933 - L2 Version 4
Chandra X-Ray Center

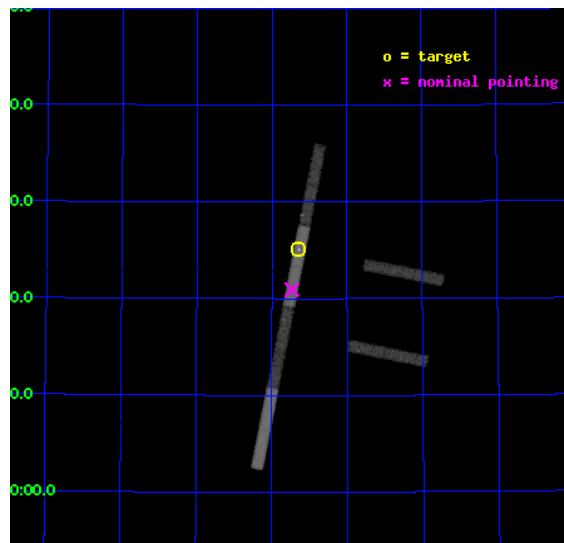
L2 Processing Date : Nov 3 2012

Contents

1	Front	2
2	OBI	3
2.1	OBI	3
2.1.1	Images	3
2.1.2	Bias	3
2.1.3	Parameters	4
2.1.4	Events	4
2.2	Compared Parameters	5
2.3	Aspect	6
2.4	Star Slots	9
2.4.1	Slot 3	9
2.4.2	Slot 4	10
2.4.3	Slot 5	11
2.4.4	Slot 6	12
2.4.5	Slot 7	13
2.5	FID Slots	14
2.5.1	Slot 0	14
2.5.2	Slot 1	15
2.5.3	Slot 2	16
A	Summary	17
A.1	Status	17
A.2	Comments	17

1 Front

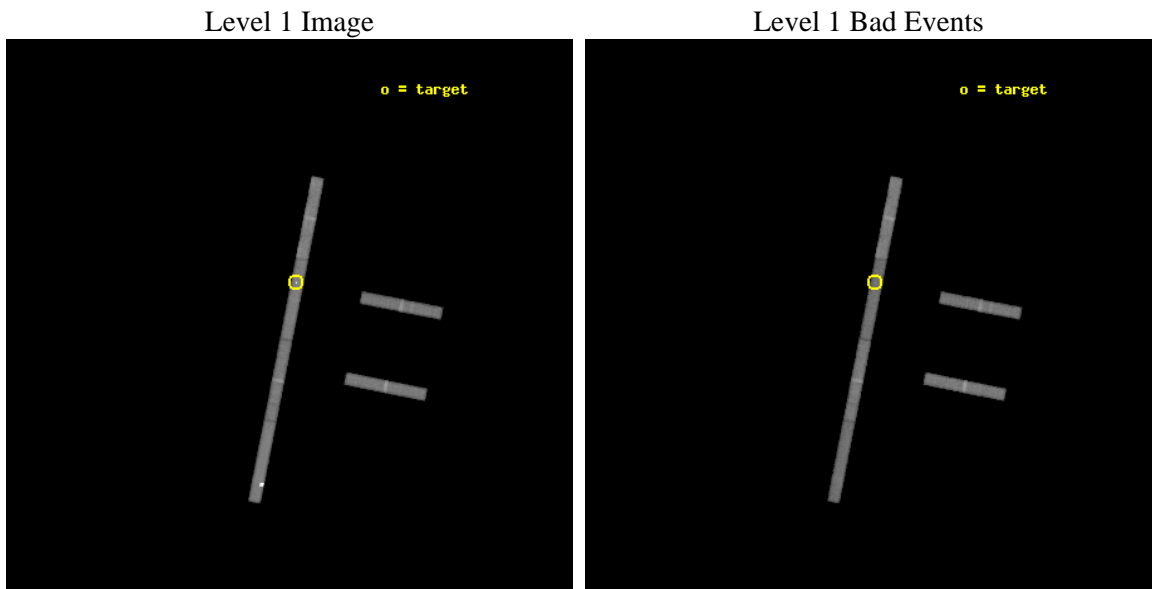
seq_num	600307	Sequence number
obs_id	3933	Observation id
title	PROBING THE SPECTRAL VARIABILITY OF THE ULTRALUMINOUS X-RAY SOURCE NGC 5204 X-1	Proposal title
observer	Dr Timothy Roberts	Principal investigator
object	NGC 5204 X-1	Source name
dtcycle	0	
cycle	P	events from which exps? Prim/Second/Both
ra_targ	202.410833	Observer's specified target RA [deg]
dec_targ	58.418333	Observer's specified target Dec [deg]
ra_nom	202.43354957156	Nominal RA [deg]
dec_nom	58.348622266421	Nominal Dec [deg]
roll_nom	281.19293735369	Nominal Roll [deg]
revision	4	Processing version of data
ontime	48937.659460455	Sum of GTIs [s]
livetime	46227.412315555	Livetime [s]
ontime2	48936.136370361	Sum of GTIs [s]
ontime3	48937.041570365	Sum of GTIs [s]
ontime5	48936.959460467	Sum of GTIs [s]
ontime6	48933.552761406	Sum of GTIs [s]
ontime7	48937.659460455	Sum of GTIs [s]
ontime8	48937.823620439	Sum of GTIs [s]
l2events	79643	Number of level 2 events



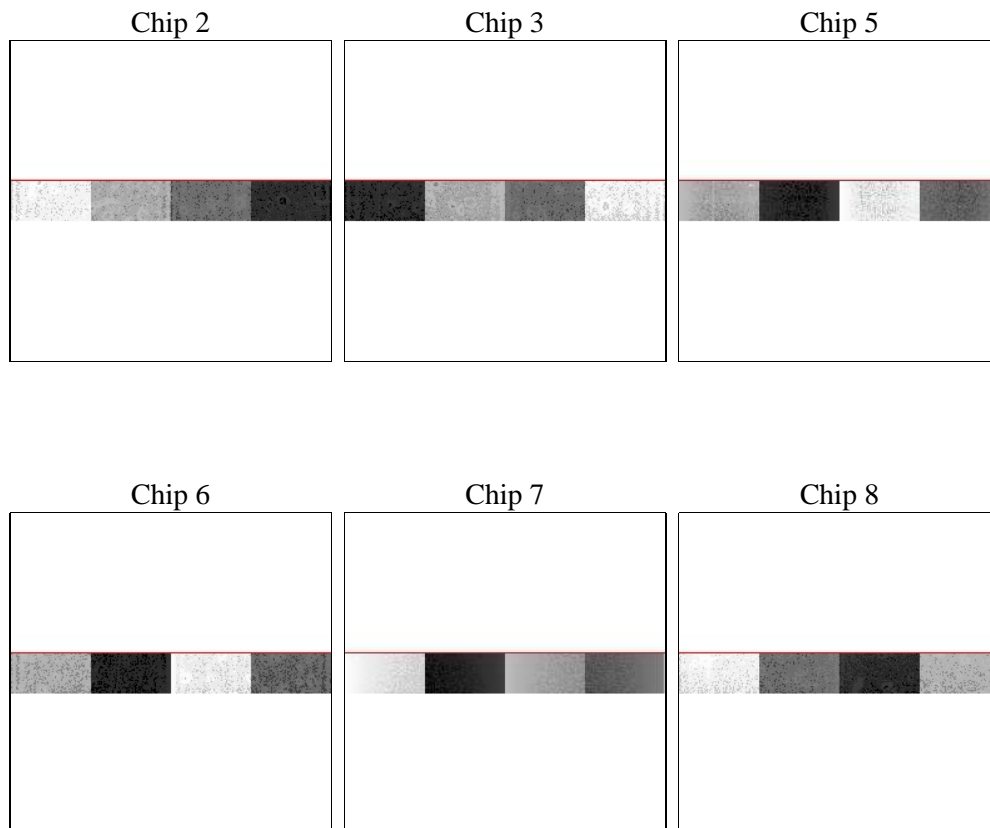
2 OBI

2.1 OBI

2.1.1 Images



2.1.2 Bias



2.1.3 Parameters

obi_num	0	Obi number	sched_exp_time	48796.519000	[s] Scheduled observation exposure time
ascdsver	8.4.5	Processing system revision	ontime	48937.659460455	Sum of GTIs [s]
caldbver	4.5.2	 	ontime2	48936.136370361	Sum of GTIs [s]
date	2012-11-03T16:41:21	Date and time of file creation	ontime3	48937.041570365	Sum of GTIs [s]
revision	4	Processing version of data	ontime5	48936.959460467	Sum of GTIs [s]
			ontime6	48933.552761406	Sum of GTIs [s]
			ontime7	48937.659460455	Sum of GTIs [s]
			ontime8	48937.823620439	Sum of GTIs [s]
			l1events	432357	Number of level 1 events

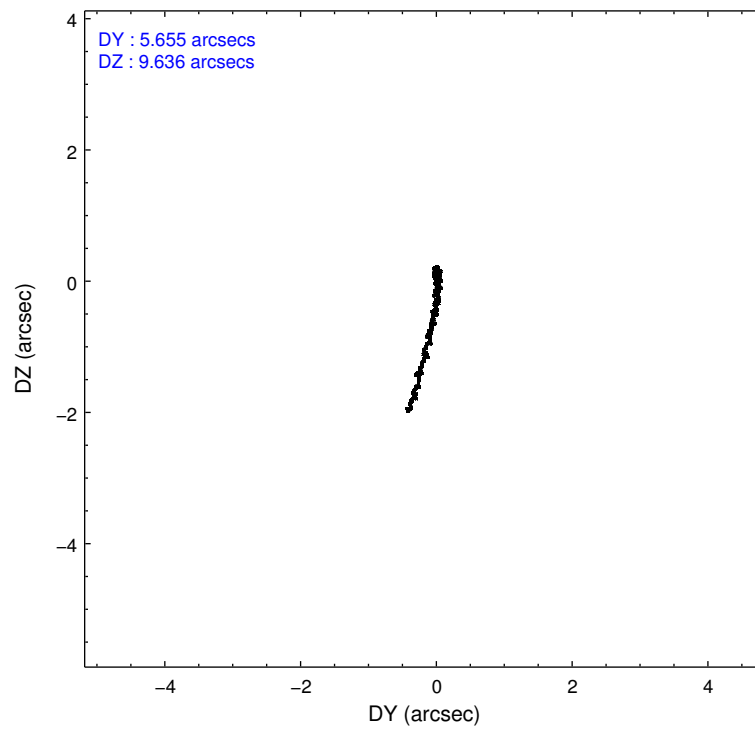
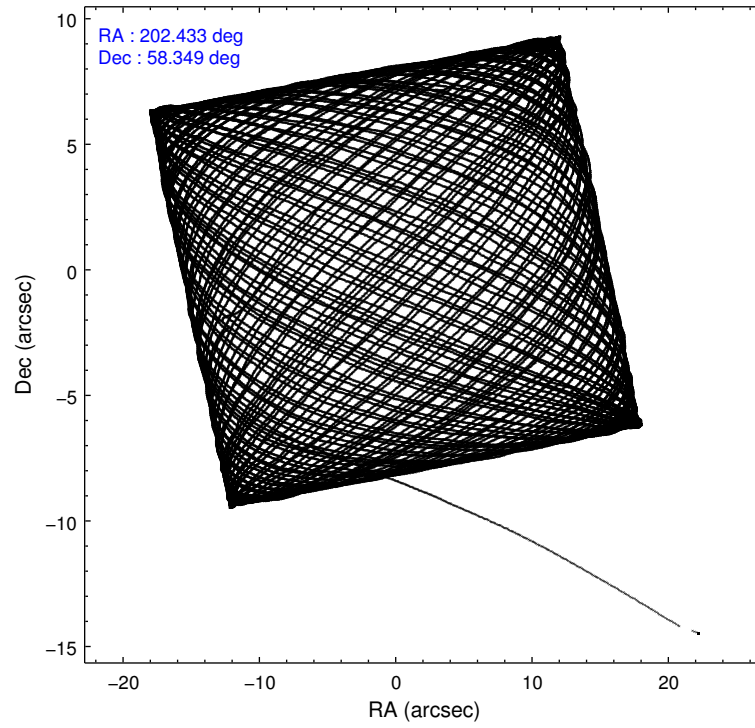
2.1.4 Events

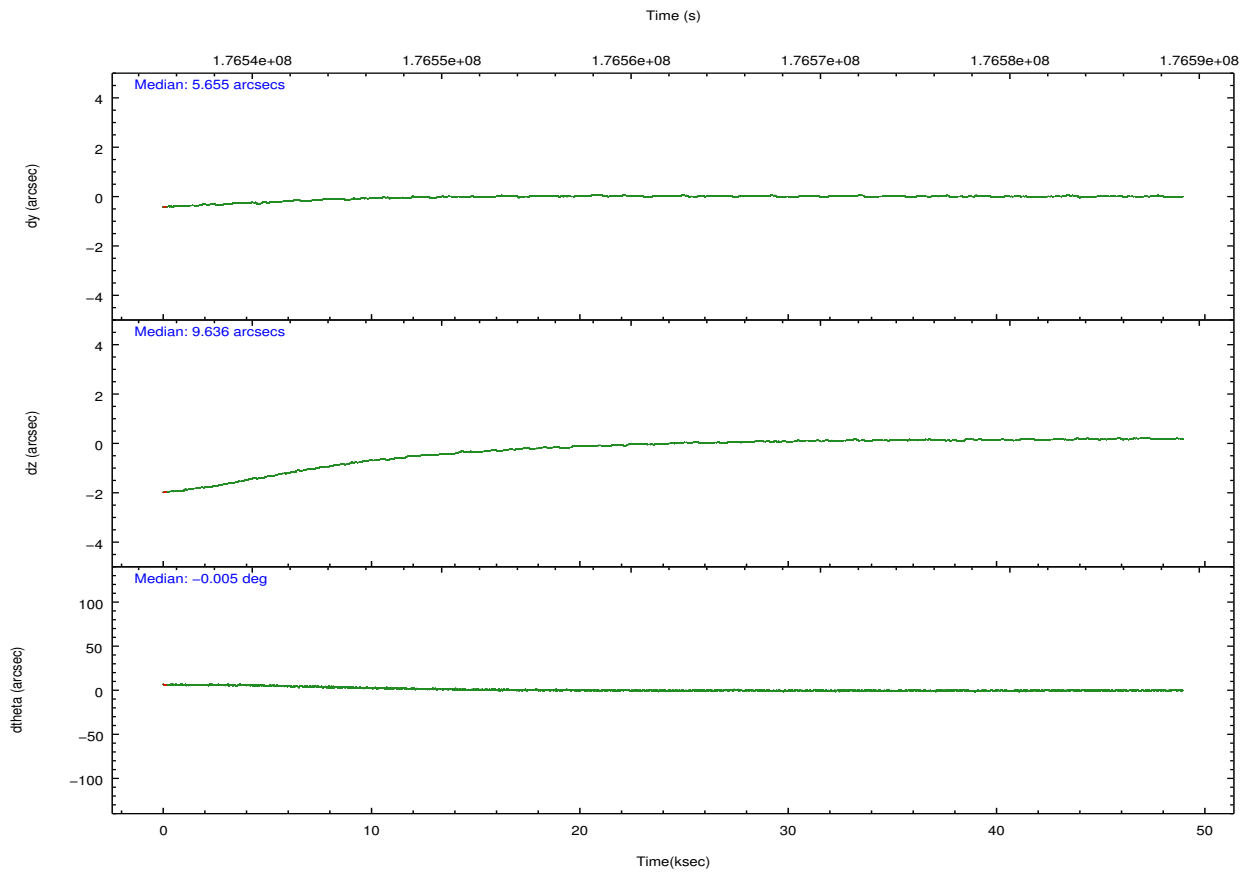
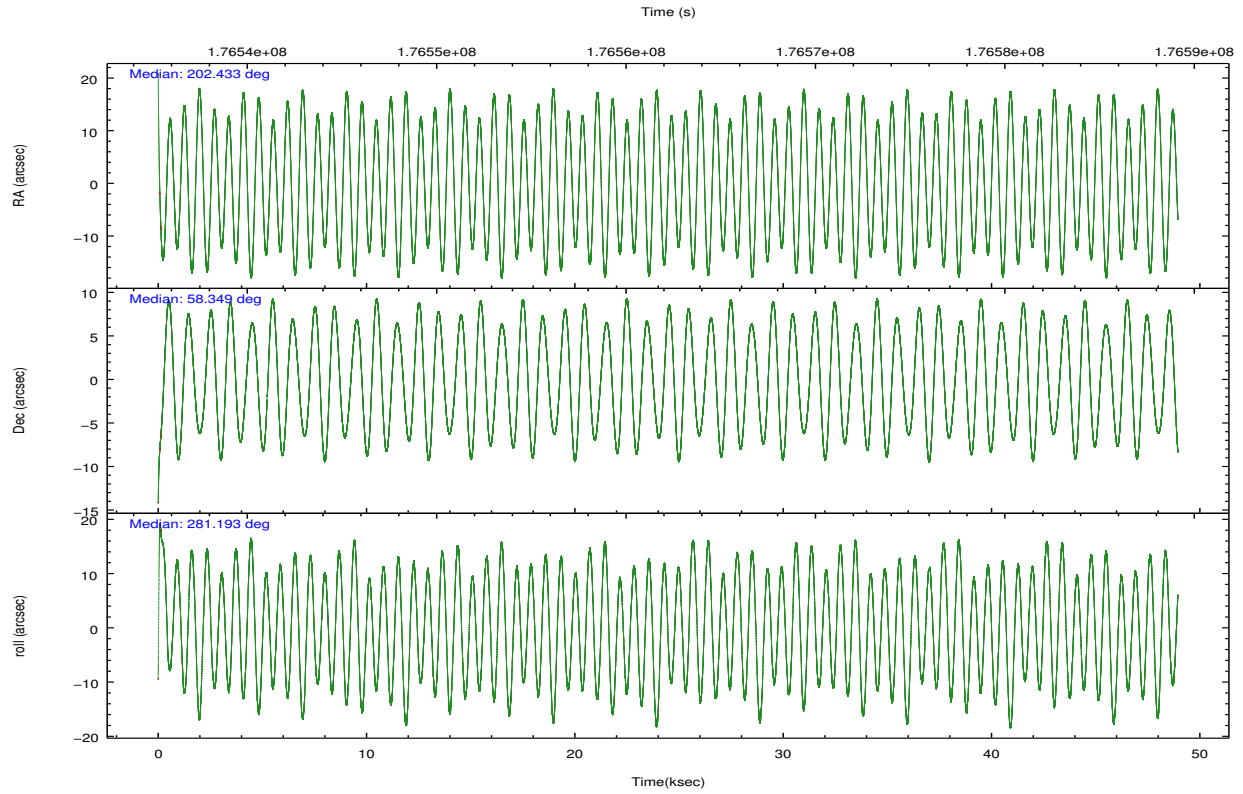
	ccd 2	ccd 3	ccd 5	ccd 6	ccd 7	ccd 8		ccd 2	ccd 3	ccd 5	ccd 6	ccd 7	ccd 8
level 1 events	58389	51943	125456	54272	69081	73216	grade 0 events	2175	1963	50487	1963	6584	3307
rejected events	52352	46540	35052	48503	34124	60727		3%	3%	40%	3%	9%	4%
rejected %	89%	89%	27%	89%	49%	82%	grade 1 events	13	14	335	13	90	22
								0%	0%	0%	0%	0%	0%
							grade 2 events	1074	859	23013	994	7645	2501
								1%	1%	18%	1%	11%	3%
							grade 3 events	946	954	2194	928	4069	1429
								1%	1%	1%	1%	5%	1%
							grade 4 events	942	833	2152	952	4014	1361
								1%	1%	1%	1%	5%	1%
							grade 5 events	1734	1650	5338	1939	5569	2233
								2%	3%	4%	3%	8%	3%
							grade 6 events	1002	876	14061	1020	13103	4080
								1%	1%	11%	1%	18%	5%
							grade 7 events	50503	44794	27876	46463	28007	58283
								86%	86%	22%	85%	40%	79%

2.2 Compared Parameters

Parameter	Planned	Actual	Parameter	Planned	Actual
Instrument	ACIS	ACIS	Obspar format version number	7	7
Detector	ACIS-235678	ACIS-235678	Obspar file type	PREDICTED	ACTUAL
Grating	NONE	NONE	Obspar update status	NONE	UPDATED
Data mode	FAINT	FAINT	Number of optional ACIS chips dropped	0	0
Observation mode	POINTING	POINTING	On-chip summing requested	N	N
[deg] Pointing RA	202.398816	202.4335495715629	Subarray requested	CUSTOM	1/8
[deg] Pointing Dec	58.368878	58.34862226642095	Subarray start row	449	449
[deg] Pointing Roll	281.065879	281.1929373536949	Subarray row count	128	128
[mm] SIM focus pos	-0.684267	-0.6828225247311905	Alternating exposures requested	N	N
[mm] SIM defocus	0	0.001444936568705701	[s] Primary exposure time	0.000000	0.7
[mm] SIM translation stage pos	-190.132523	-190.1425803651734			
[mm] SIM translation stage offset	0	0.01005778216563158			
[s] Observation start time (MET)	176537893.184000	176536707.79784			
Observation start date	2003-08-06T06:17:09	2003-08-06T05:58:27			
[s] Observation end time (MET)	176586690.184000	176587004.54999			
Observation end date	2003-08-06T19:50:26	2003-08-06T19:56:44			
Read mode	TIMED	TIMED			

2.3 Aspect



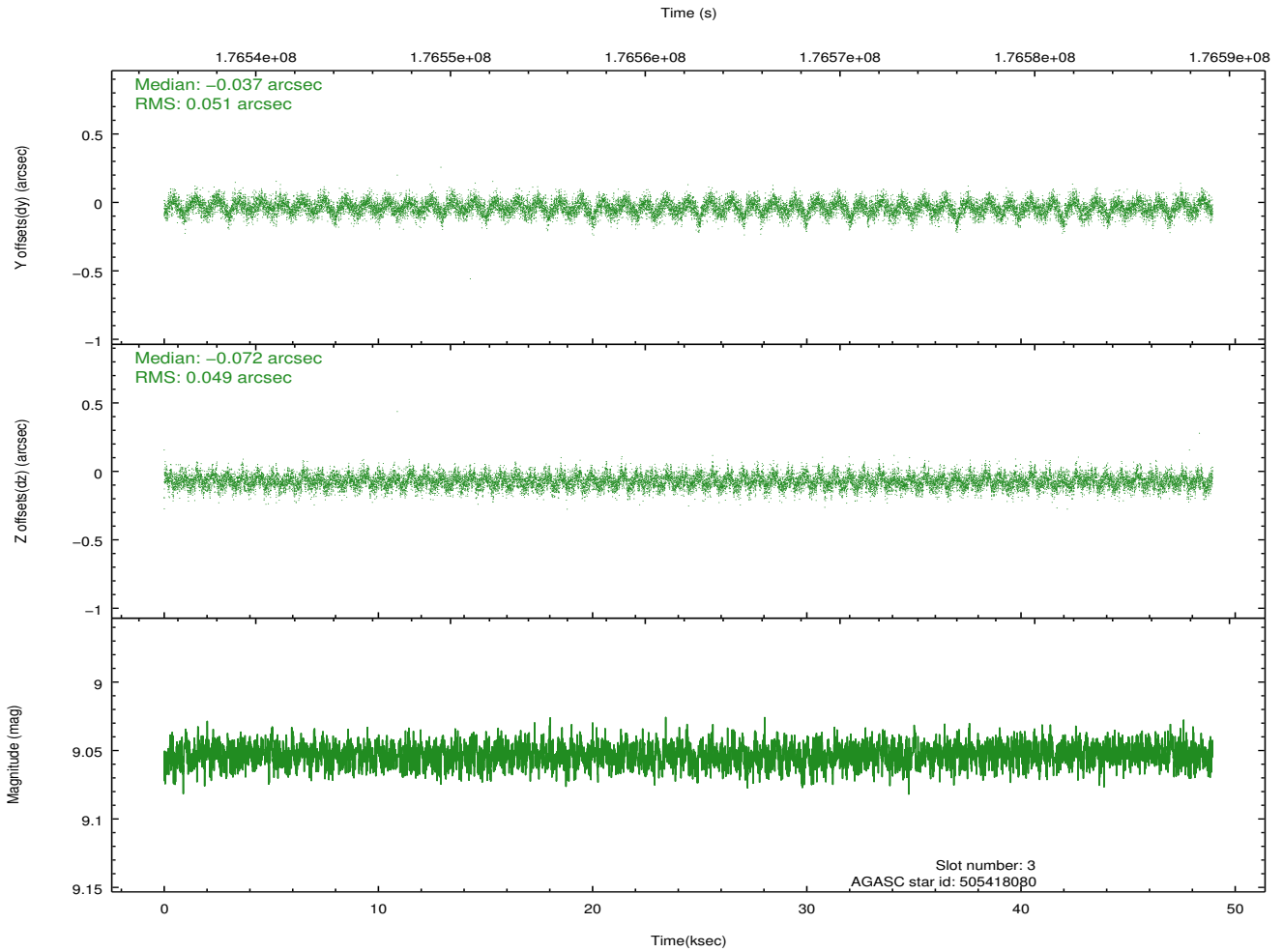
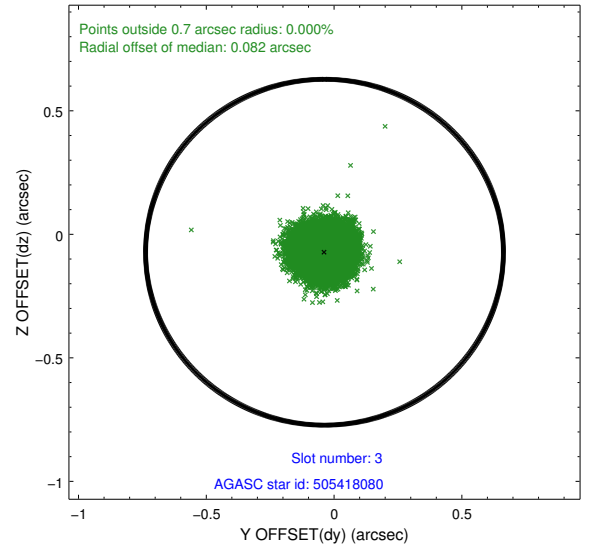
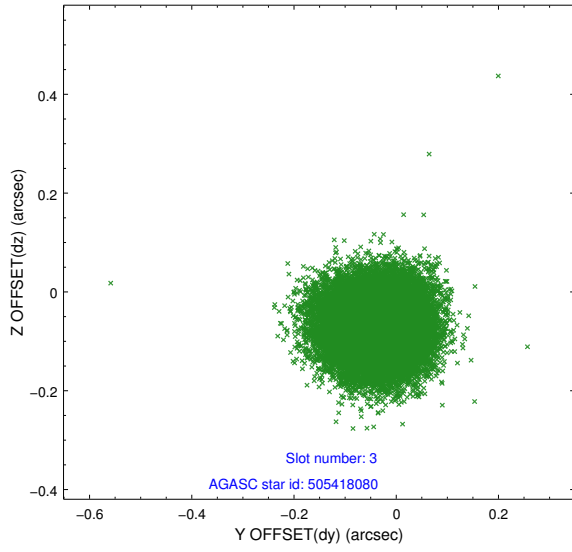


Slot Statistics

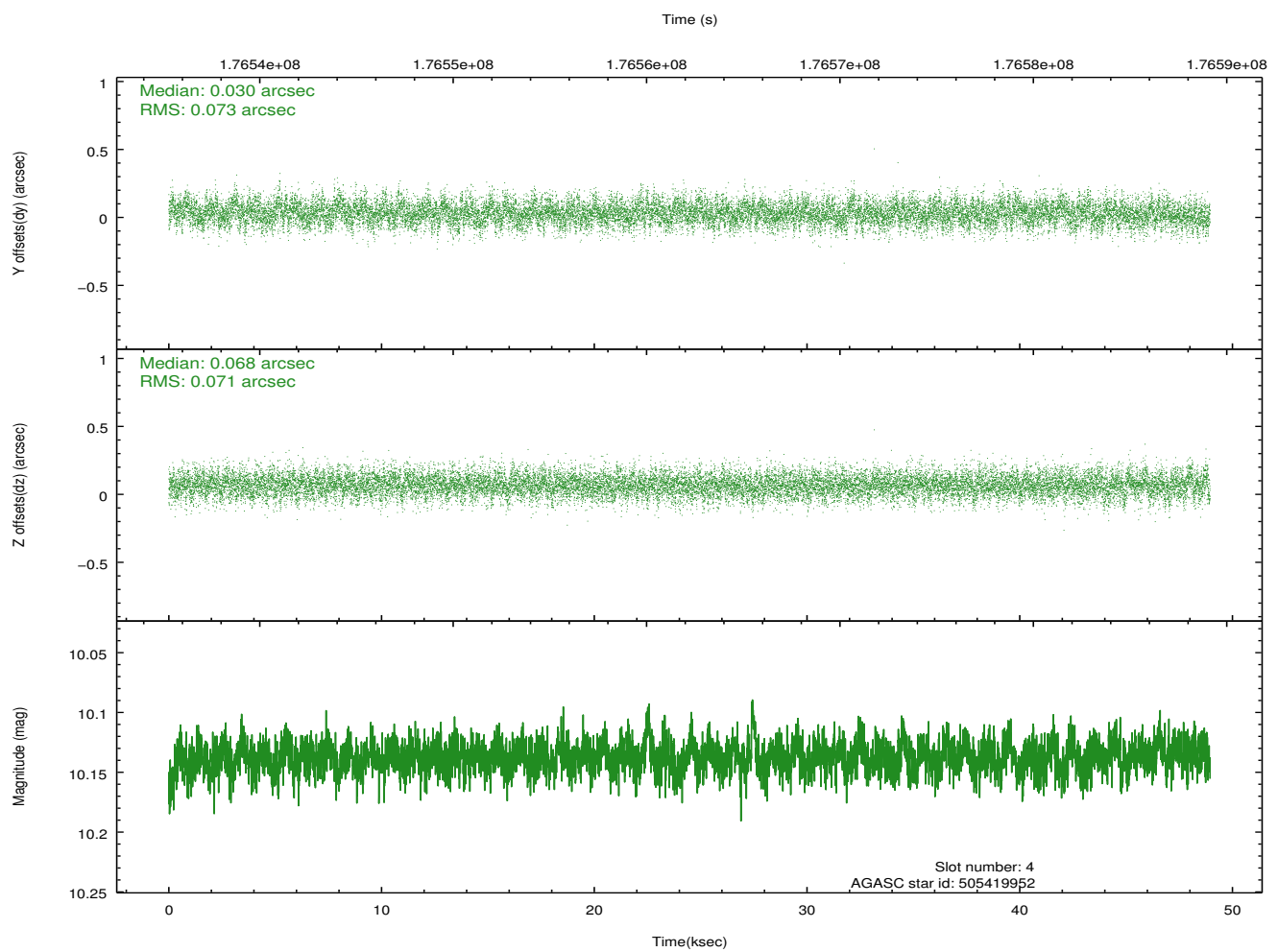
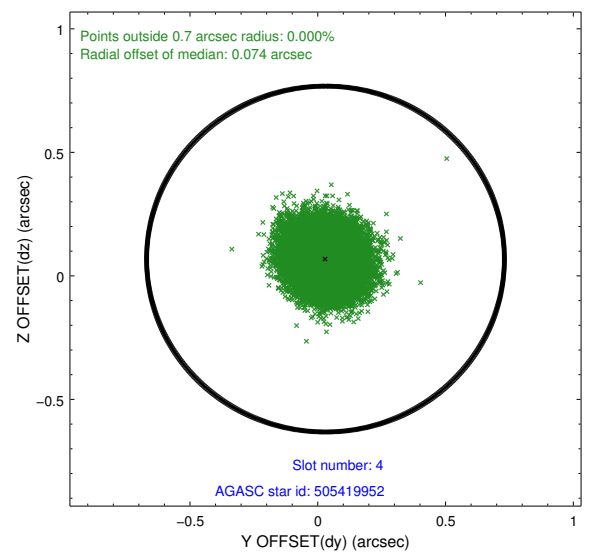
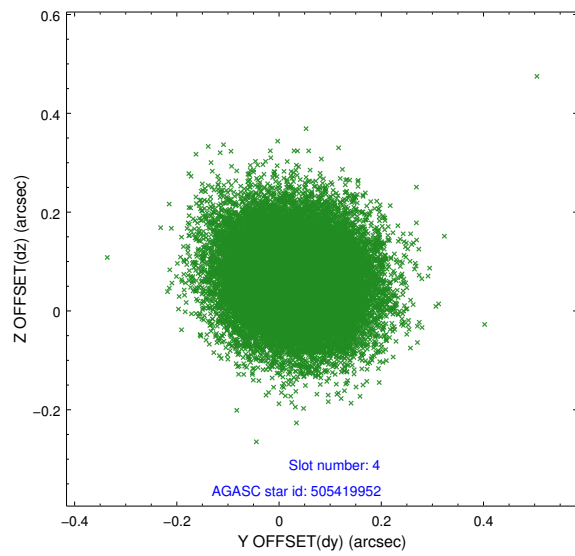
slot	status	id	mag	n_pts	med_dy	med_dz	dr1	dr2	ra	dec	mean_y	mean_z
0	FID	ACIS-S-1	7.18	11934	0.011	-0.007	0.012	0.054	0.000000	0.000000	937.69	-1726.18
1	FID	ACIS-S-5	7.23	11933	-0.069	0.005	0.013	0.041	0.000000	0.000000	-1811.36	171.47
2	FID	ACIS-S-6	7.35	11934	0.034	0.014	0.014	0.024	0.000000	0.000000	403.33	815.37
3	GUIDE	505418080	9.05	23852	-0.037	-0.072	0.075	0.123	201.533017	58.898788	-2191.04	-1211.83
4	GUIDE	505419952	10.14	23857	0.030	0.068	0.109	0.176	201.880700	58.804366	-1727.33	-646.31
5	GUIDE	505421936	8.86	23855	-0.029	0.051	0.066	0.109	201.854843	57.887820	1496.03	-1353.02
6	GUIDE	505421968	8.18	23868	0.034	-0.007	0.057	0.093	202.022601	58.209270	425.55	-810.05
7	GUIDE	505422344	8.62	23865	0.004	-0.037	0.060	0.098	202.767077	57.846963	1978.03	332.35

2.4 Star Slots

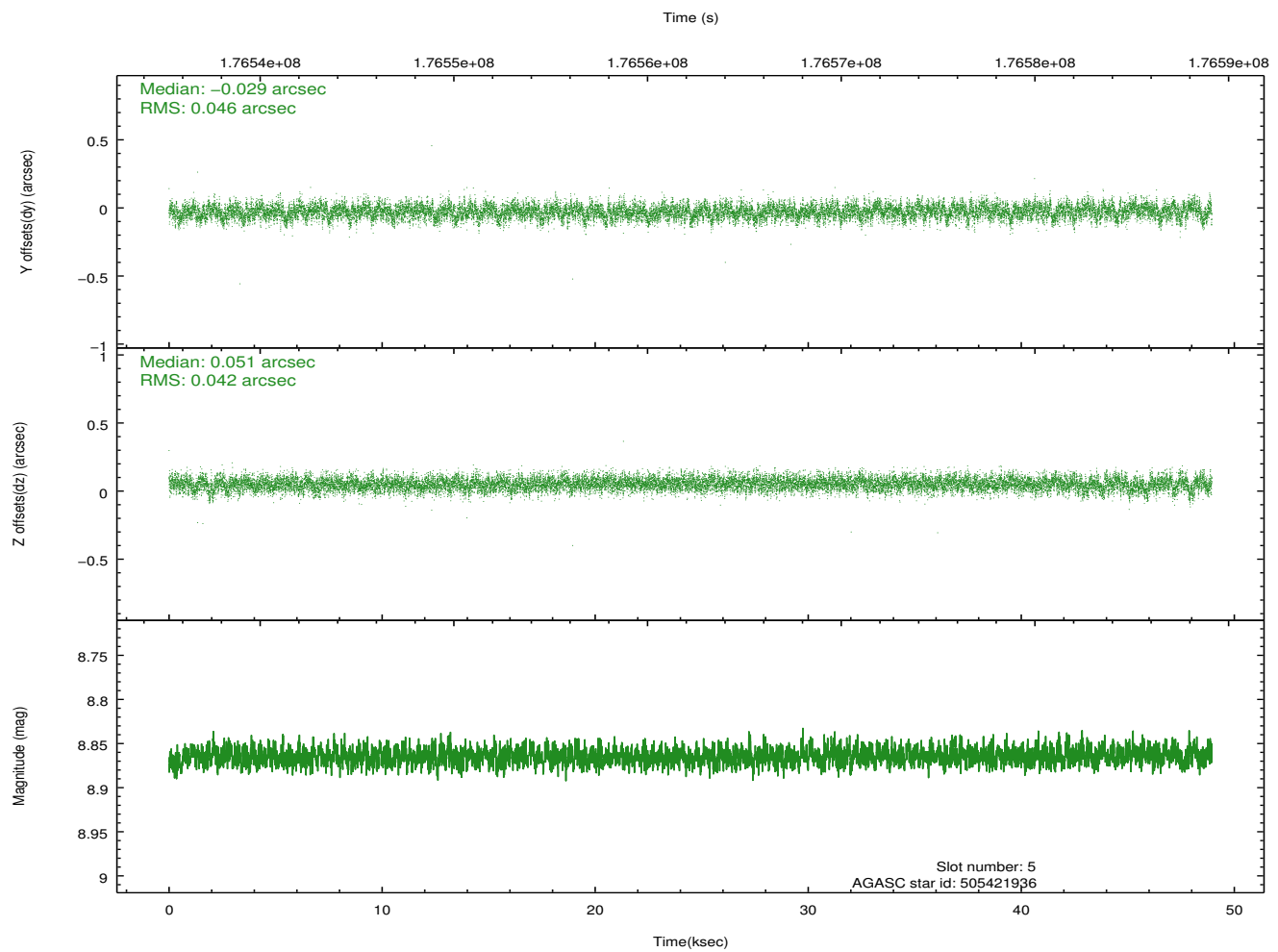
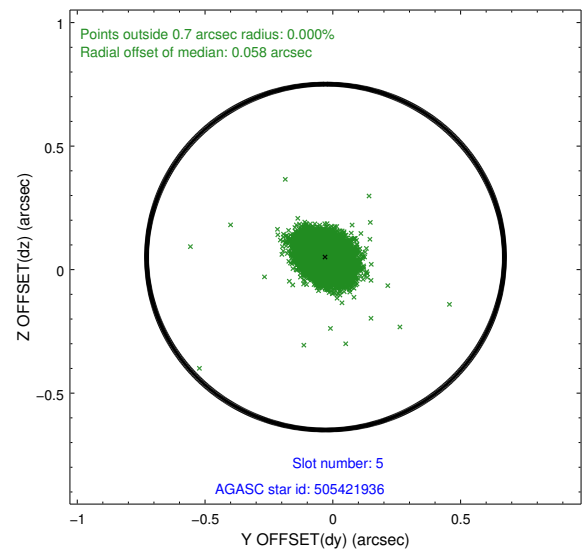
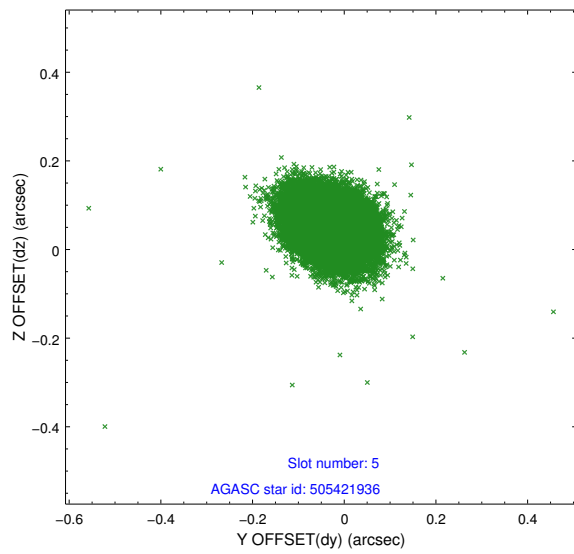
2.4.1 Slot 3



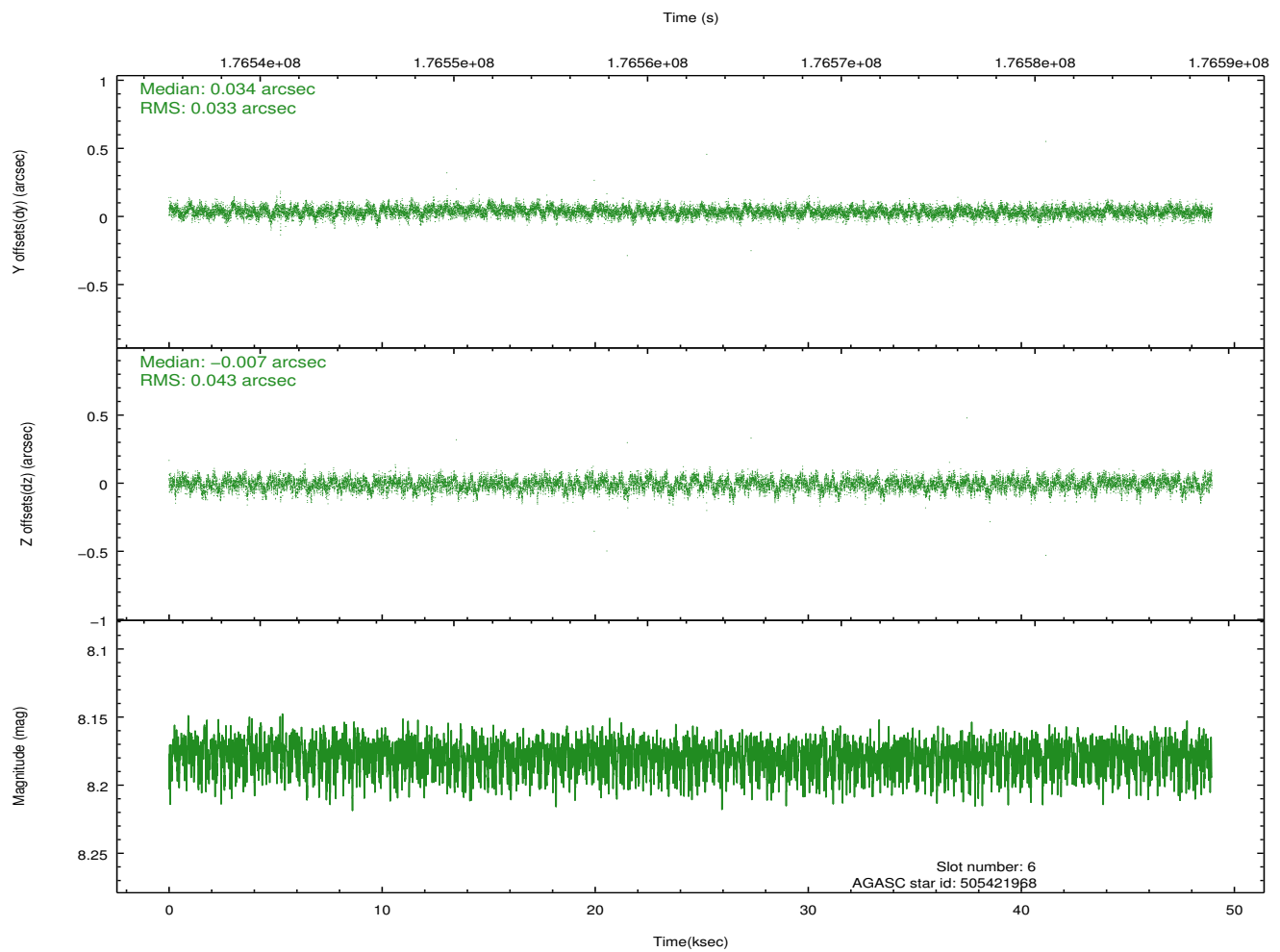
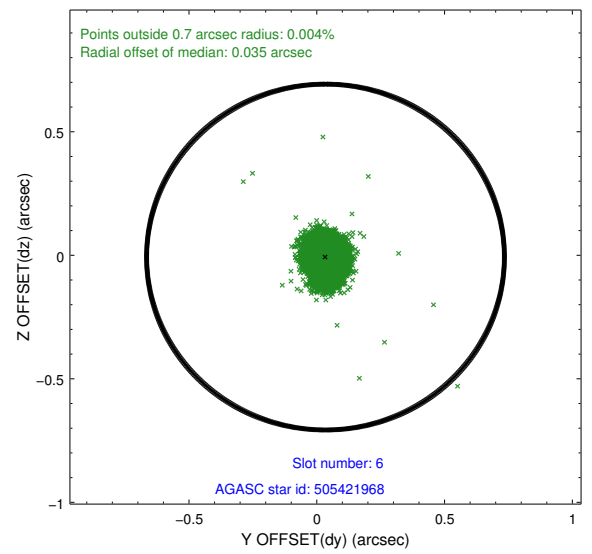
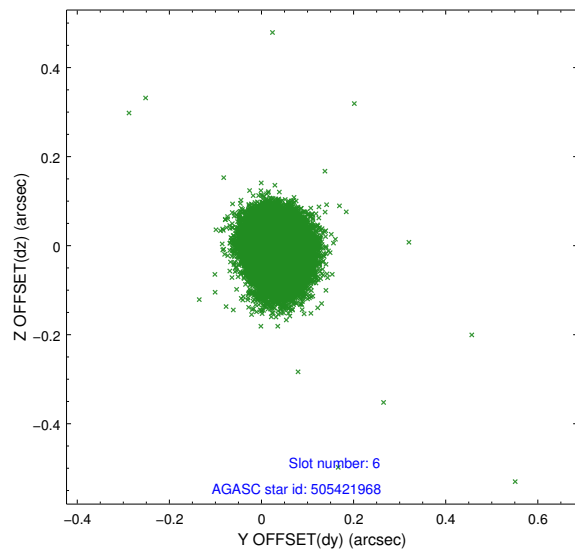
2.4.2 Slot 4



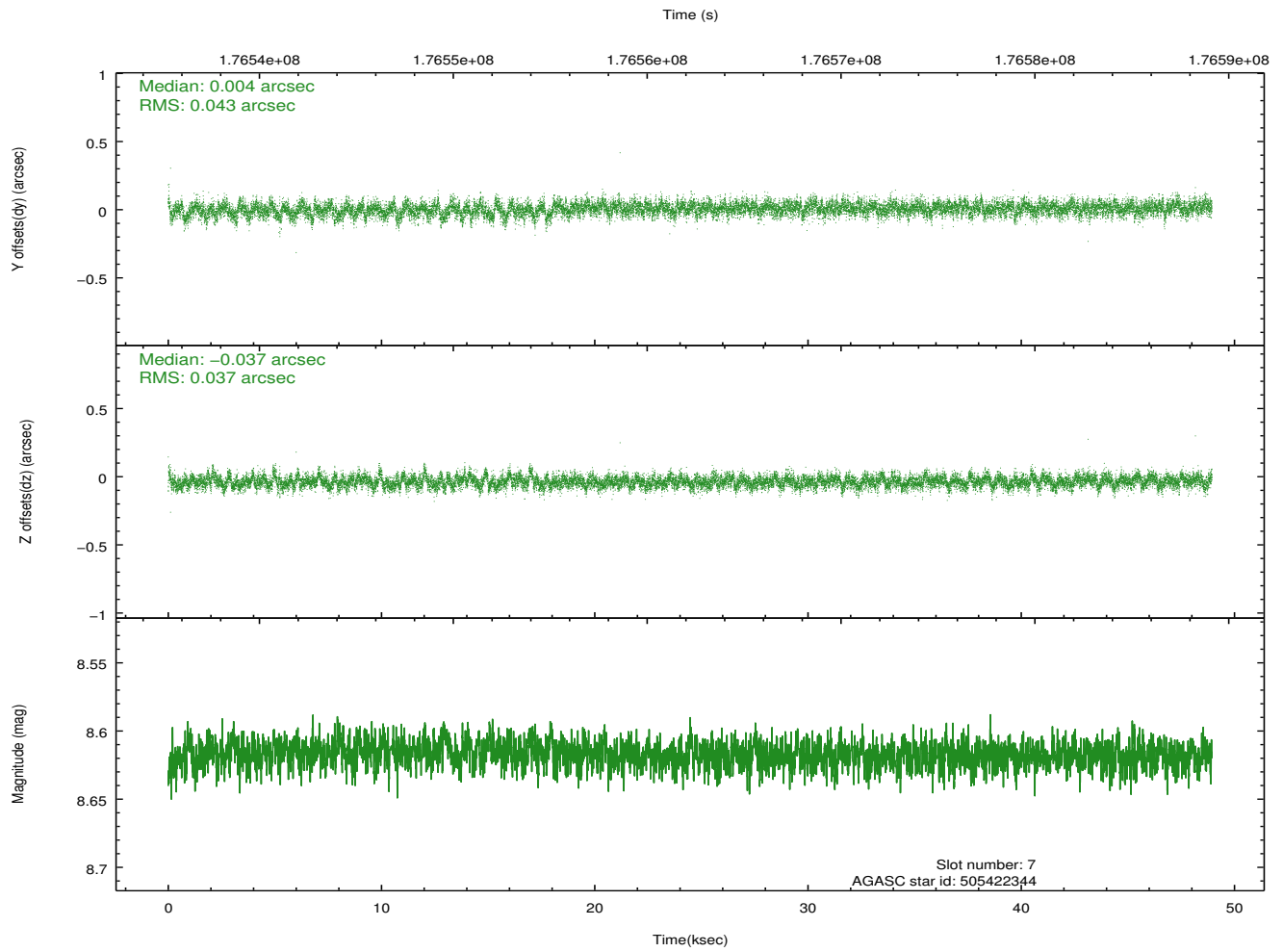
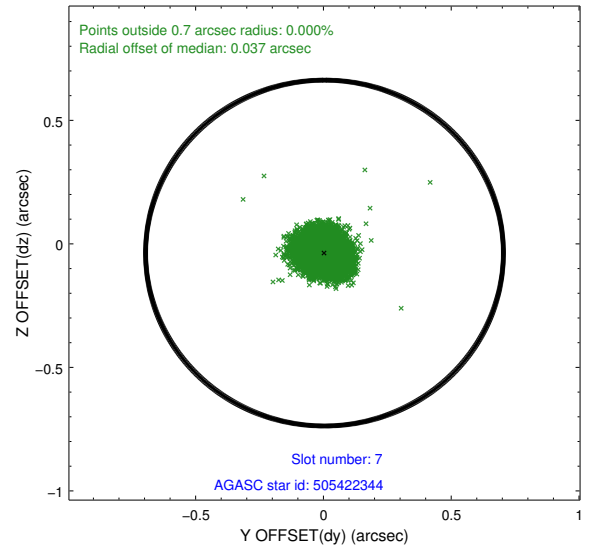
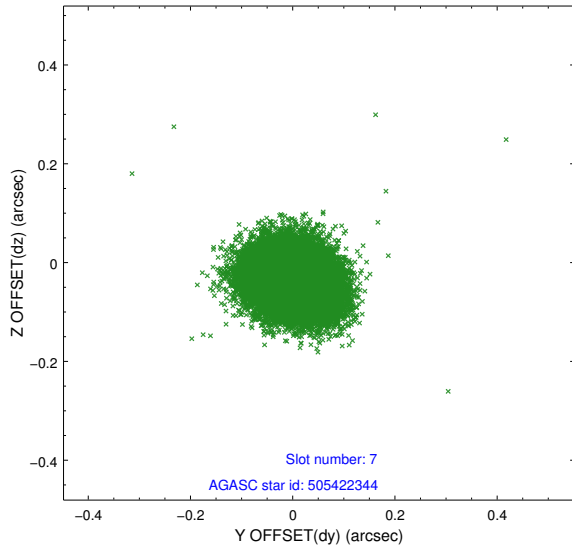
2.4.3 Slot 5



2.4.4 Slot 6

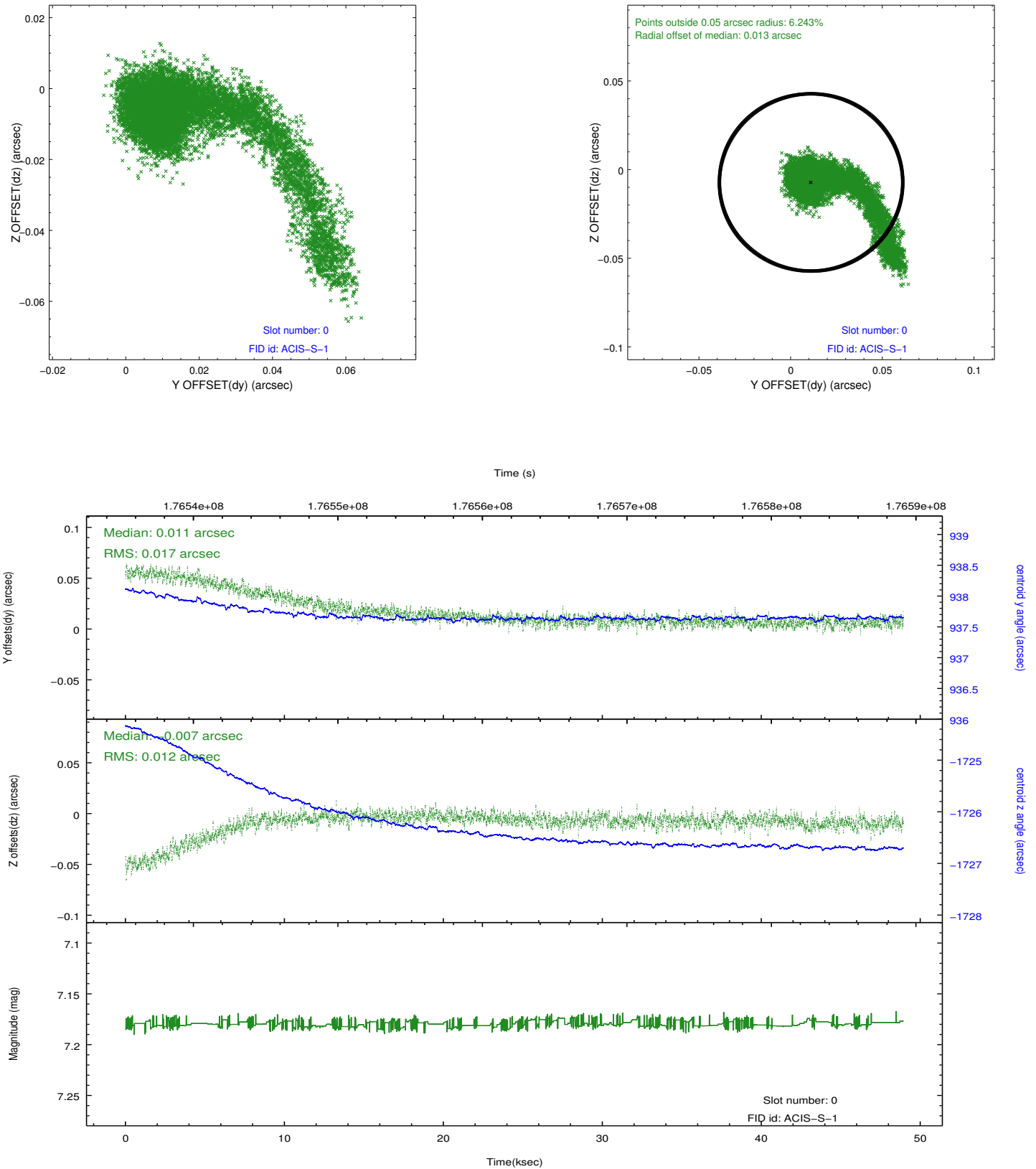


2.4.5 Slot 7

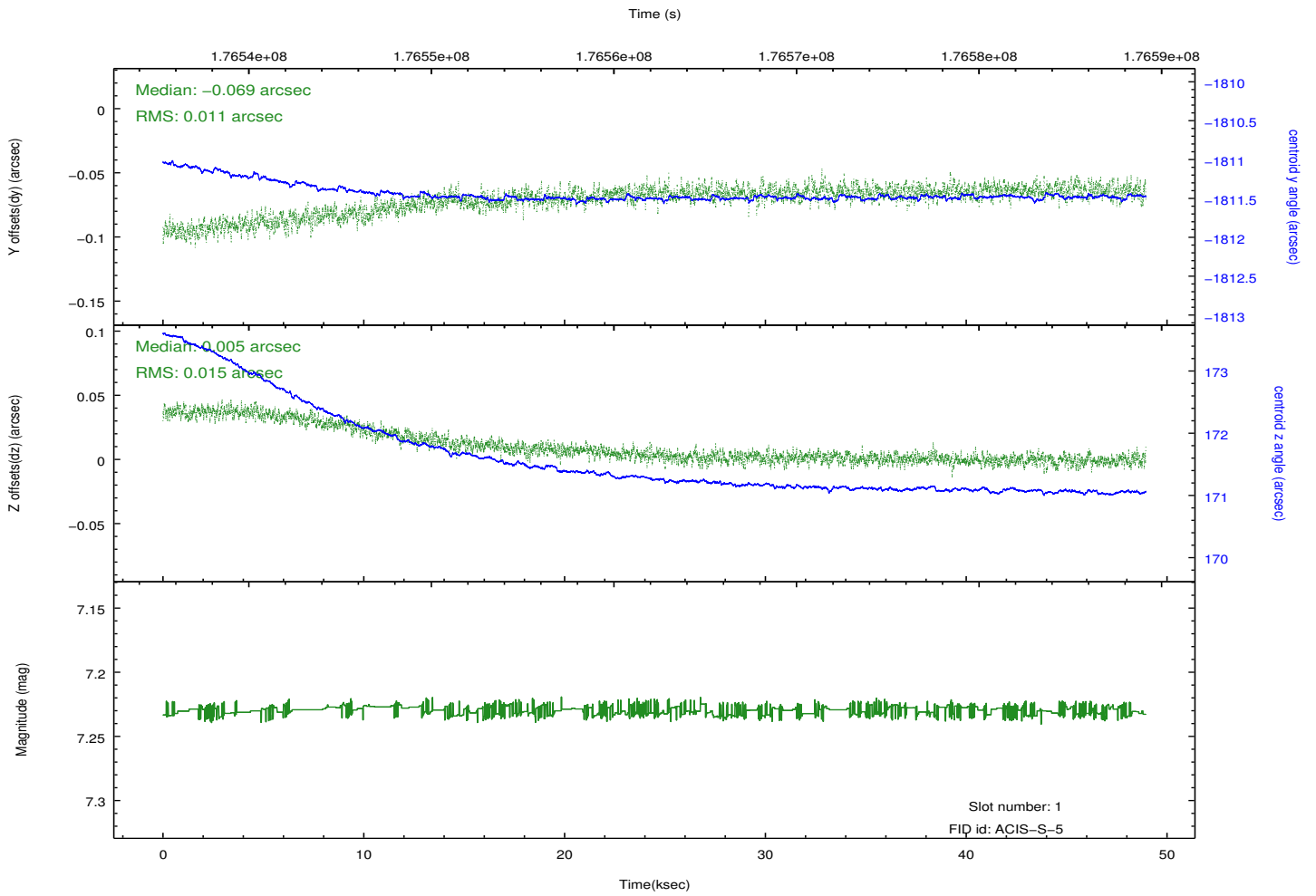
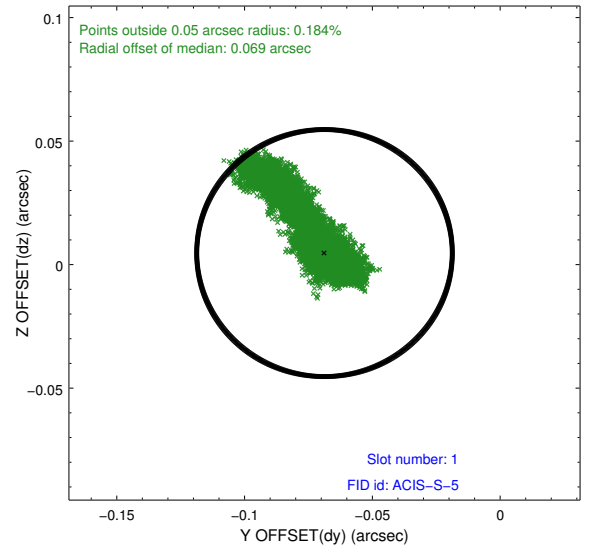
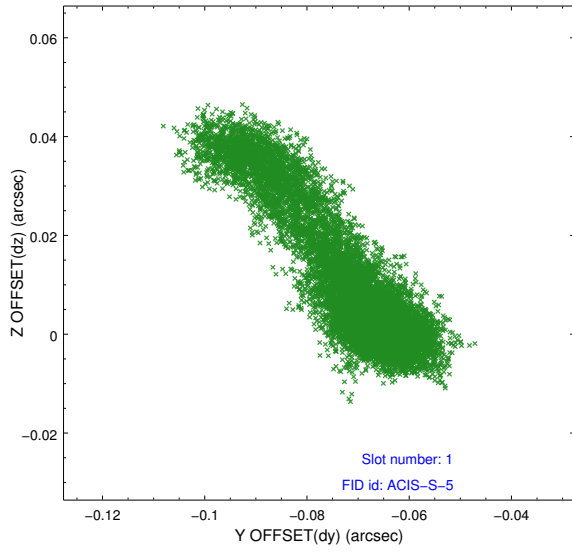


2.5 FID Slots

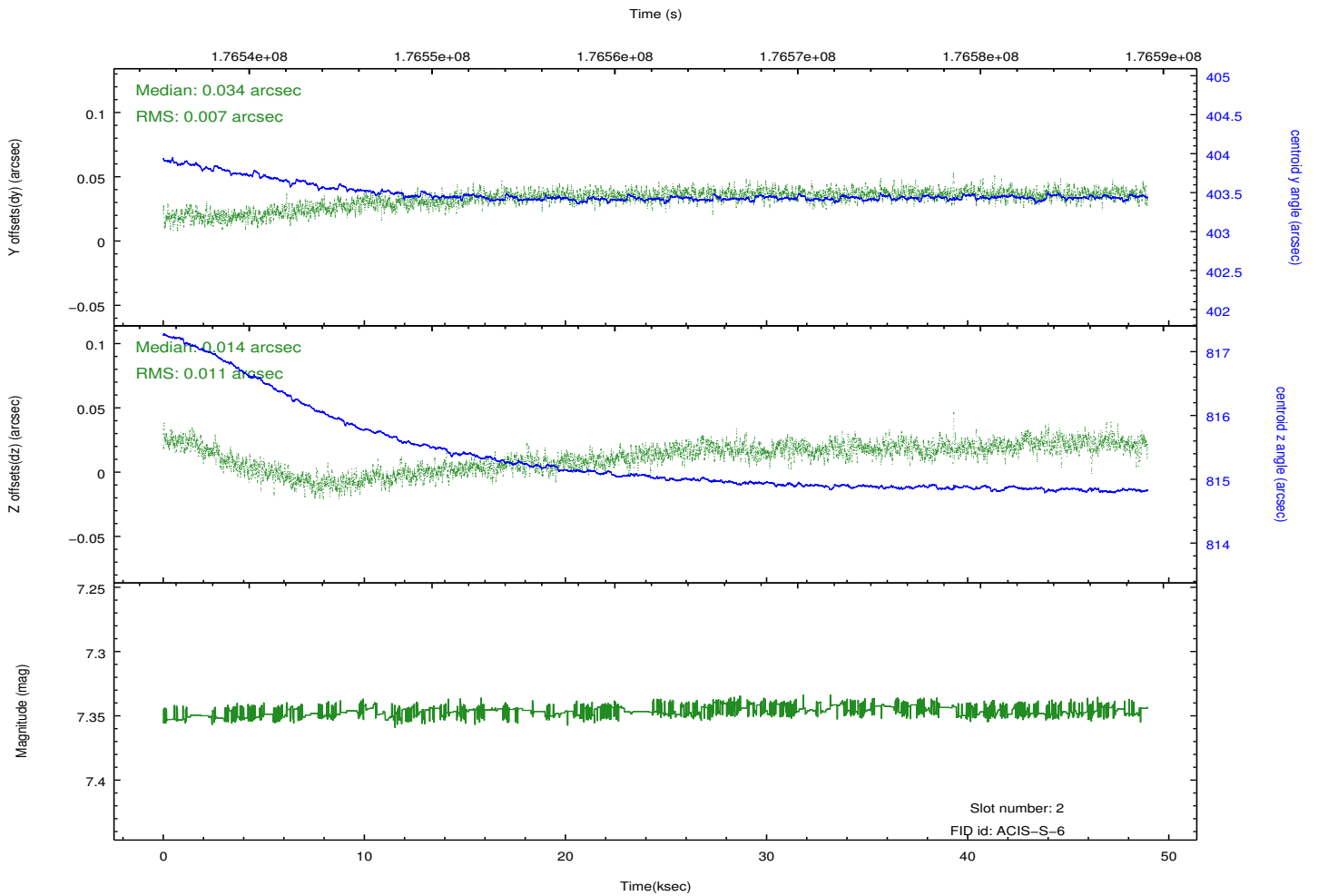
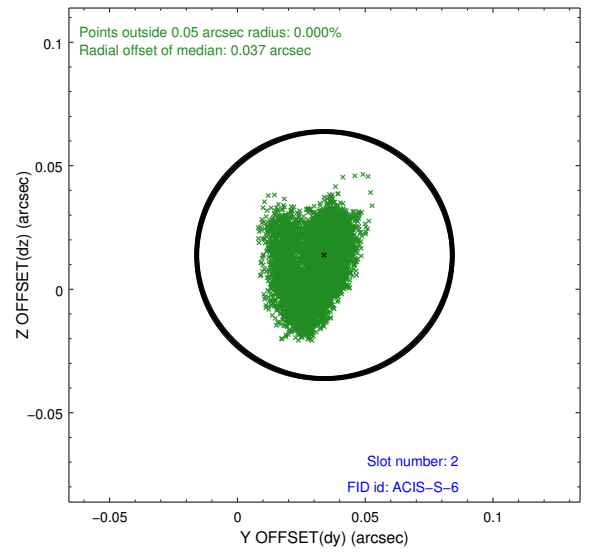
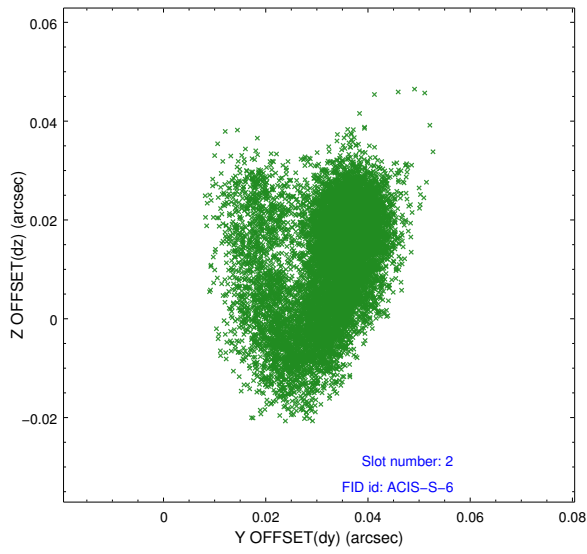
2.5.1 Slot 0



2.5.2 Slot 1



2.5.3 Slot 2



A Summary

A.1 Status

V&V Scientist	Jen Lauer
V&V Date (YYYY-MM-DD)	2012.11.29
V&V Edition	1
V&V Disposition and Status	OK
V&V Charge Time	48.937

A.2 Comments

The bias map for CCD_ID = 5 was incomplete because of data gaps in telemetry. The bias map was reconstructed using scaled data from a comparable bias map for another observation to fill the data gaps. The affected region is bounded by the coordinates:
(202.55027,58.04145), (202.49909,58.17843), (202.49427,58.17792), (202.54546,58.04095)