

V&V Reference Report

L2 ASCDS Version : 8.4.5

Observation 3953 - L2 Version 3
Chandra X-Ray Center

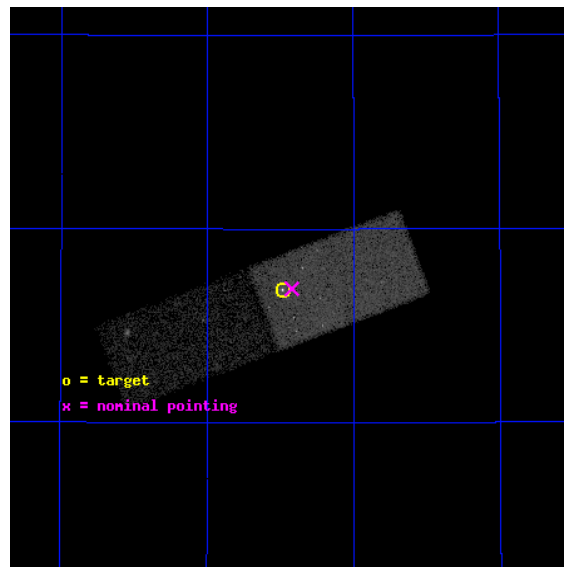
L2 Processing Date : Oct 24 2012

Contents

1	Front	2
2	OBI	3
2.1	OBI	3
2.1.1	Images	3
2.1.2	Bias	3
2.1.3	Parameters	4
2.1.4	Events	4
2.2	Compared Parameters	5
2.3	Aspect	6
2.4	Star Slots	9
2.4.1	Slot 3	9
2.4.2	Slot 4	10
2.4.3	Slot 5	11
2.4.4	Slot 6	12
2.4.5	Slot 7	13
2.5	FID Slots	14
2.5.1	Slot 0	14
2.5.2	Slot 1	15
2.5.3	Slot 2	16
A	Summary	17
A.1	Status	17
A.2	Comments	17

1 Front

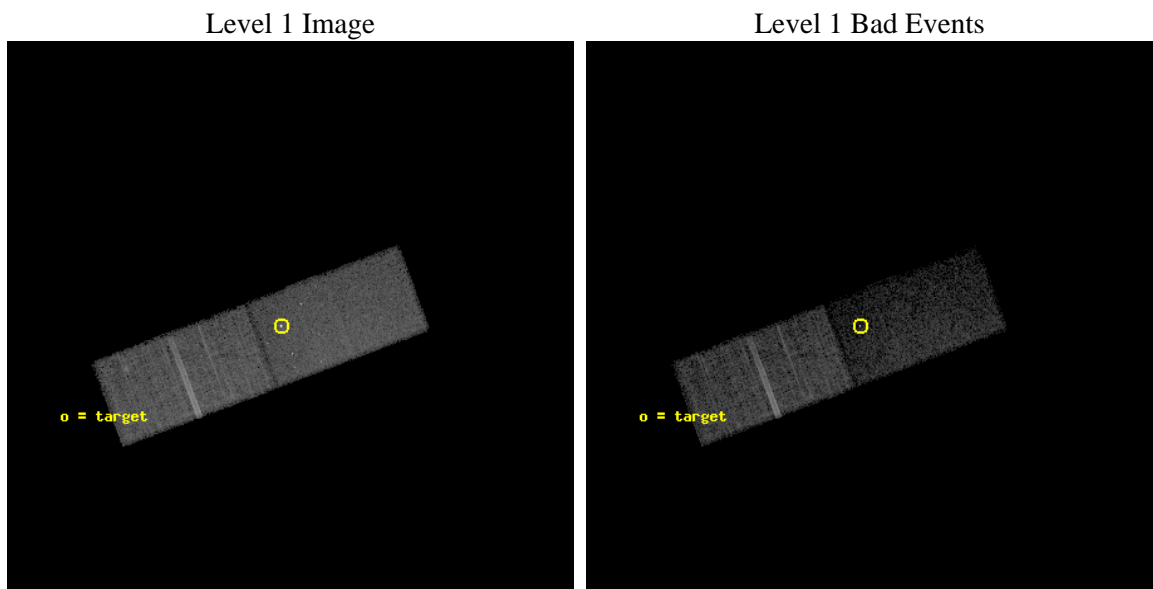
seq_num	600327	Sequence number
obs_id	3953	Observation id
title	A CHANDRA AND HST STUDY OF IC 10: THE NEAREST STARBURST GALAXY TO THE MILKY WAY	Proposal title
observer	Dr. Franz Bauer	Principal investigator
object	IC 10	Source name
dtcycle	0	
cycle	P	events from which exps? Prim/Second/Both
ra_targ	5.120833	Observer's specified target RA [deg]
dec_targ	59.280833	Observer's specified target Dec [deg]
ra_nom	5.1056635019971	Nominal RA [deg]
dec_nom	59.282019233209	Nominal Dec [deg]
roll_nom	339.26965206059	Nominal Roll [deg]
revision	3	Processing version of data
ontime	29896.199790359	Sum of GTIs [s]
livetime	29191.48304669	Livetime [s]
ontime6	29896.199790359	Sum of GTIs [s]
ontime7	29896.199790359	Sum of GTIs [s]
l2events	50709	Number of level 2 events



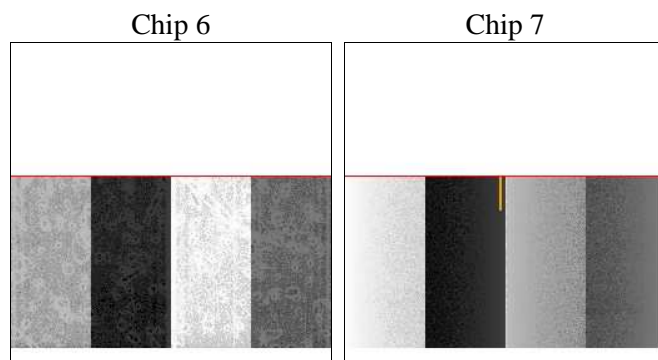
2 OBI

2.1 OBI

2.1.1 Images



2.1.2 Bias



2.1.3 Parameters

obi_num	0	Obi number	sched_exp_time	29700.000000	[s] Scheduled observation exposure time
ascdsver	8.4.5	Processing system revision	ontime	29896.199790359	Sum of GTIs [s]
caldbver	4.5.2	 	ontime6	29896.199790359	Sum of GTIs [s]
date	2012-10-24T14:10:45	Date and time of file creation	ontime7	29896.199790359	Sum of GTIs [s]
revision	3	Processing version of data	l1events	173760	Number of level 1 events

2.1.4 Events

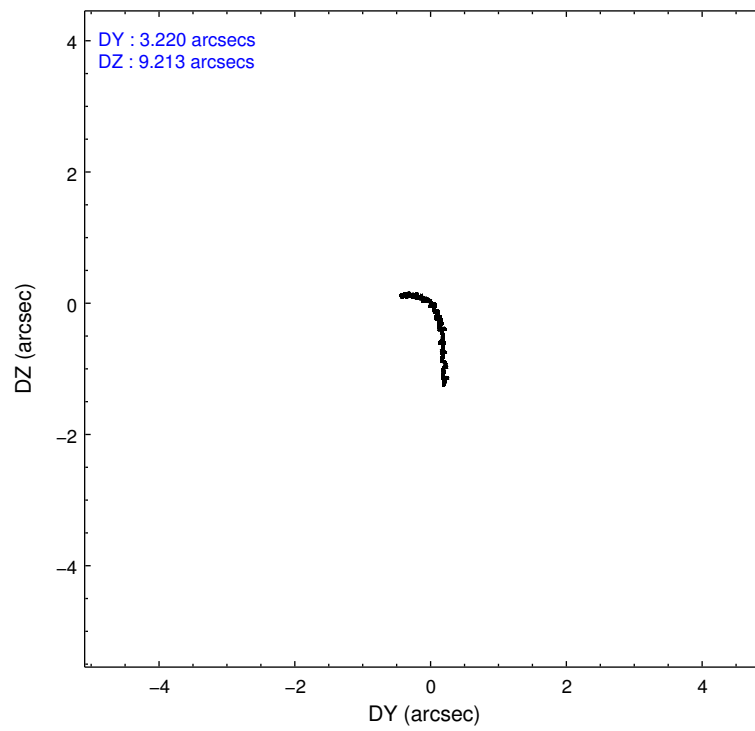
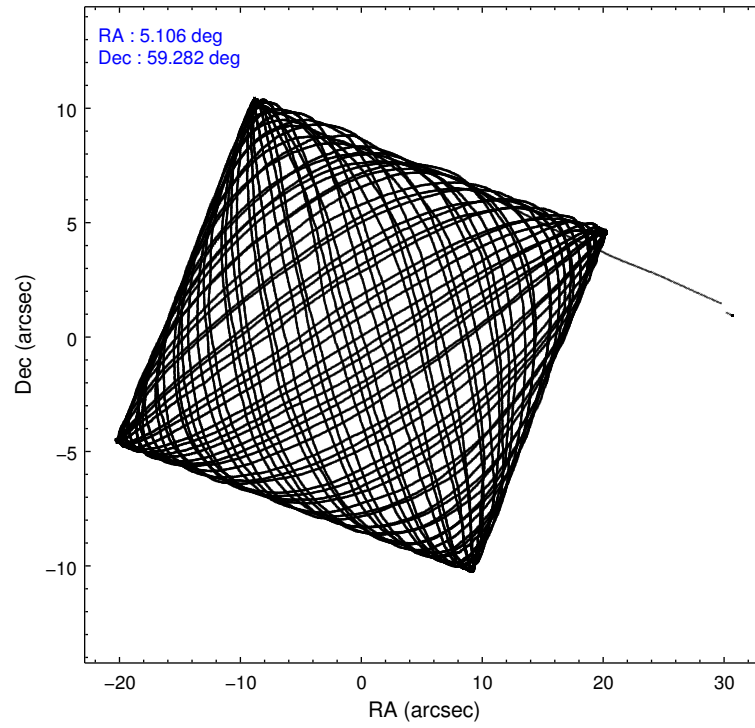
	ccd 6	ccd 7
level 1 events	91335	82425
rejected events	82146	38145
rejected %	89%	46%

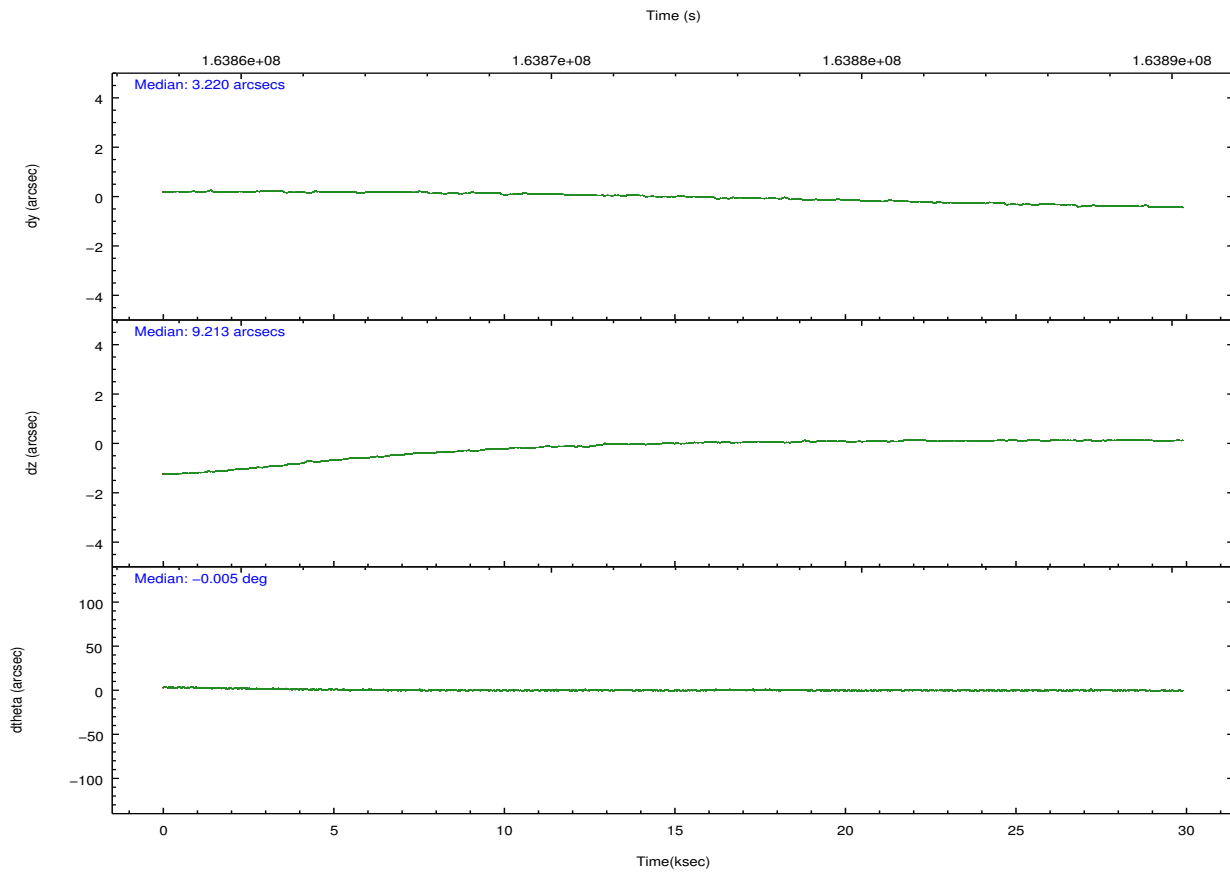
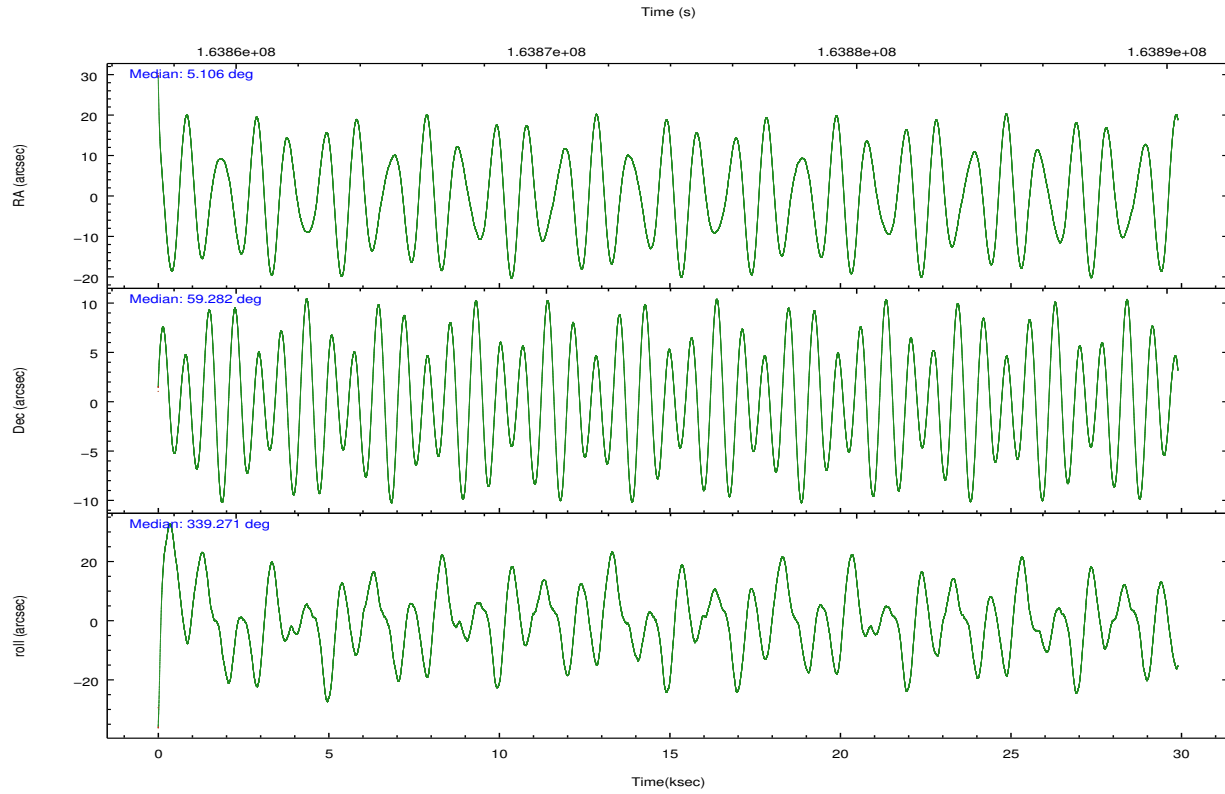
	ccd 6	ccd 7
grade 0 events	3218	5101
	3%	6%
grade 1 events	16	111
	0%	0%
grade 2 events	1876	9881
	2%	11%
grade 3 events	1301	4850
	1%	5%
grade 4 events	1307	4806
	1%	5%
grade 5 events	2485	8311
	2%	10%
grade 6 events	1639	20224
	1%	24%
grade 7 events	79493	29141
	87%	35%

2.2 Compared Parameters

Parameter	Planned	Actual	Parameter	Planned	Actual
Instrument	ACIS	ACIS	Obspar format version number	7	7
Detector	ACIS-67	ACIS-67	Obspar file type	PREDICTED	ACTUAL
Grating	NONE	NONE	Obspar update status	NONE	UPDATED
Data mode	VFAINT	VFAINT	Number of optional ACIS chips dropped	0	0
Observation mode	POINTING	POINTING	On-chip summing requested	N	N
[deg] Pointing RA	5.053202	5.105663501997071	Subarray requested	CUSTOM	CUSTOM
[deg] Pointing Dec	59.277233	59.28201923320935	Subarray start row	50	50
[deg] Pointing Roll	339.158141	339.2696520605861	Subarray row count	550	550
[mm] SIM focus pos	-0.684267	-0.6828225247311905	Alternating exposures requested	N	N
[mm] SIM defocus	0	0.001444936568705701	[s] Primary exposure time	0.000000	1.7
[mm] SIM translation stage pos	-184.272523	-184.2666255054277			
[mm] SIM translation stage offset	-5.86	-5.865897077580087			
[s] Observation start time (MET)	163859171.184000	163858182.96036			
Observation start date	2003-03-12T12:25:07	2003-03-12T12:09:42			
[s] Observation end time (MET)	163888871.184000	163889527.97418			
Observation end date	2003-03-12T20:40:07	2003-03-12T20:52:07			
Read mode	TIMED	TIMED			

2.3 Aspect



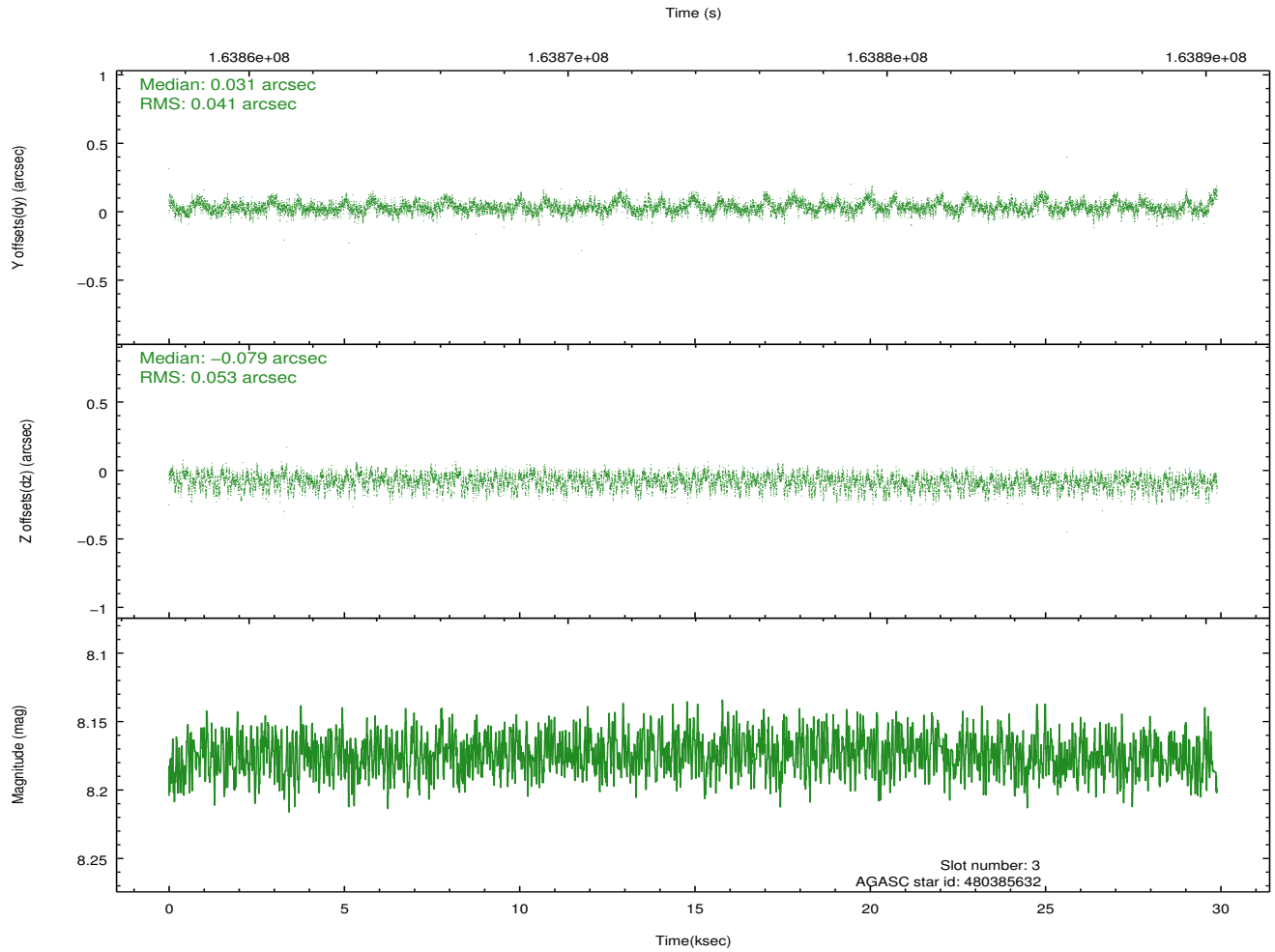
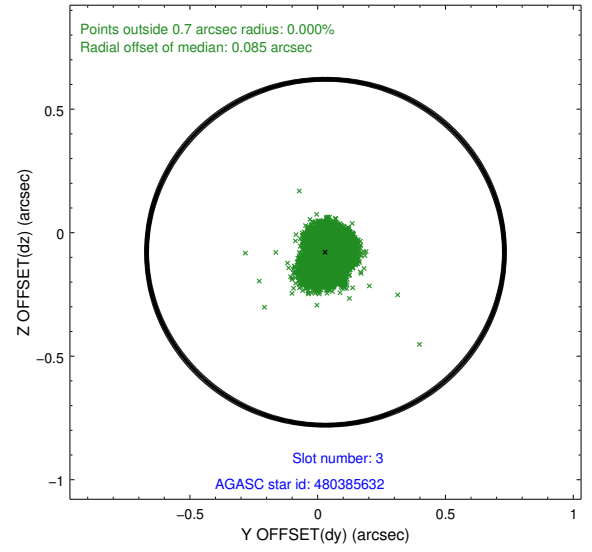
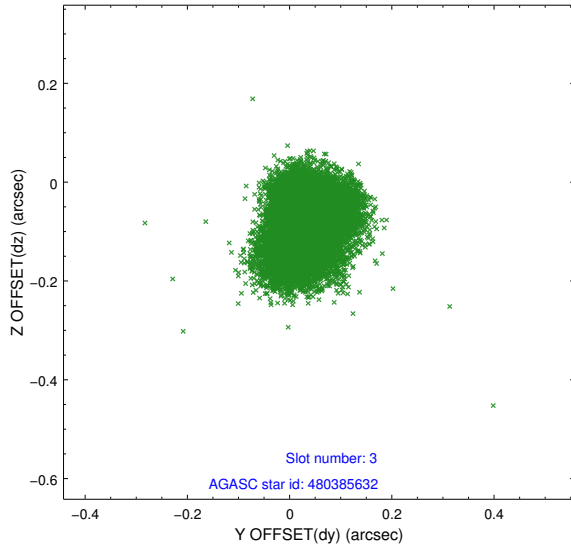


Slot Statistics

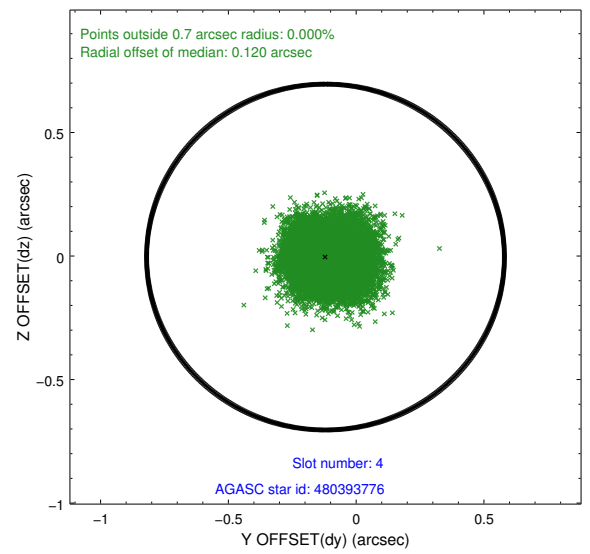
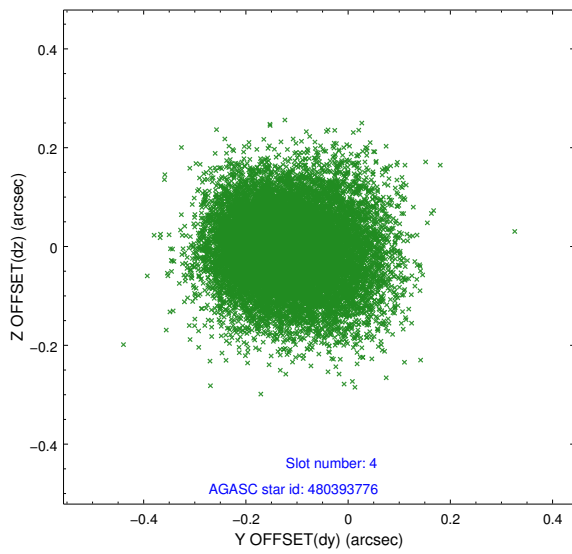
slot	status	id	mag	n_pts	med_dy	med_dz	dr1	dr2	ra	dec	mean_y	mean_z
0	FID	ACIS-S-2	7.09	7293	-0.063	-0.067	0.017	0.024	0.000000	0.000000	-755.45	-1851.22
1	FID	ACIS-S-4	7.18	7293	0.017	0.047	0.015	0.026	0.000000	0.000000	2157.85	57.32
2	FID	ACIS-S-5	7.23	7293	0.014	0.024	0.012	0.025	0.000000	0.000000	-1808.15	50.99
3	GUIDE	480385632	8.17	14585	0.031	-0.079	0.071	0.115	4.459917	59.057587	-746.63	-1125.15
4	GUIDE	480393776	9.61	14537	-0.120	-0.004	0.120	0.193	3.491597	58.998930	-2361.59	-1934.85
5	GUIDE	480387176	9.18	14543	-0.024	-0.089	0.079	0.129	3.896033	59.564774	-2346.97	233.69
6	GUIDE	480379256	9.03	14575	0.042	0.143	0.102	0.166	5.631259	59.673209	473.29	1710.54
7	GUIDE	480384744	9.93	14574	0.071	0.033	0.139	0.225	6.183603	59.739179	1318.88	2300.31

2.4 Star Slots

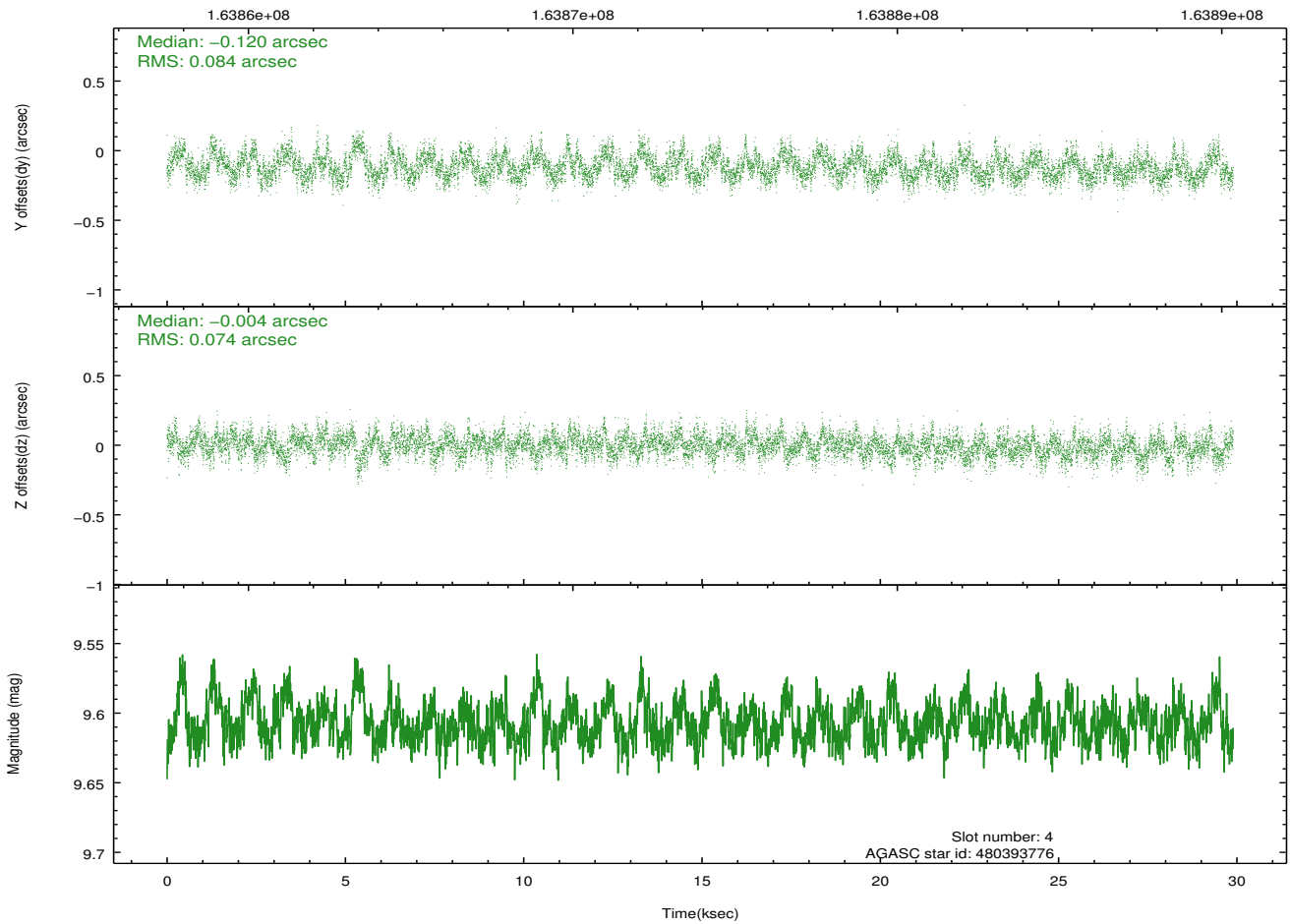
2.4.1 Slot 3



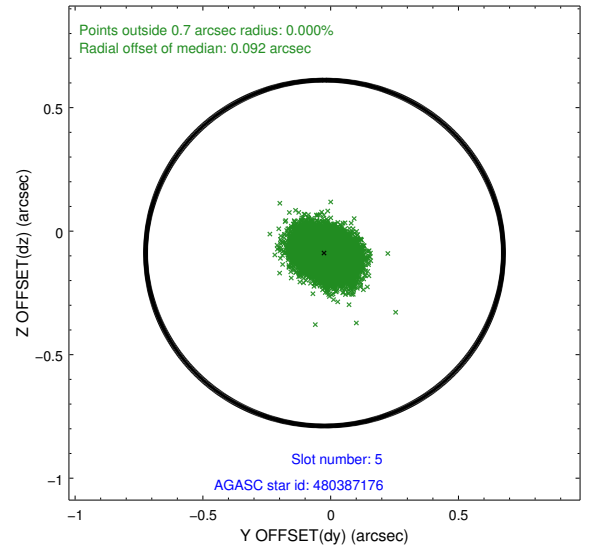
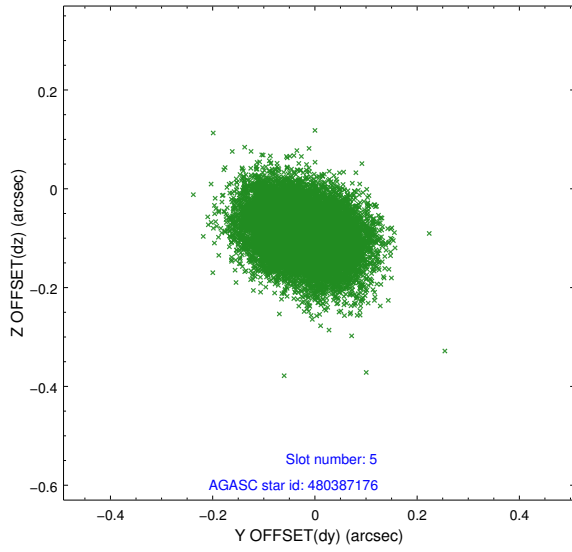
2.4.2 Slot 4



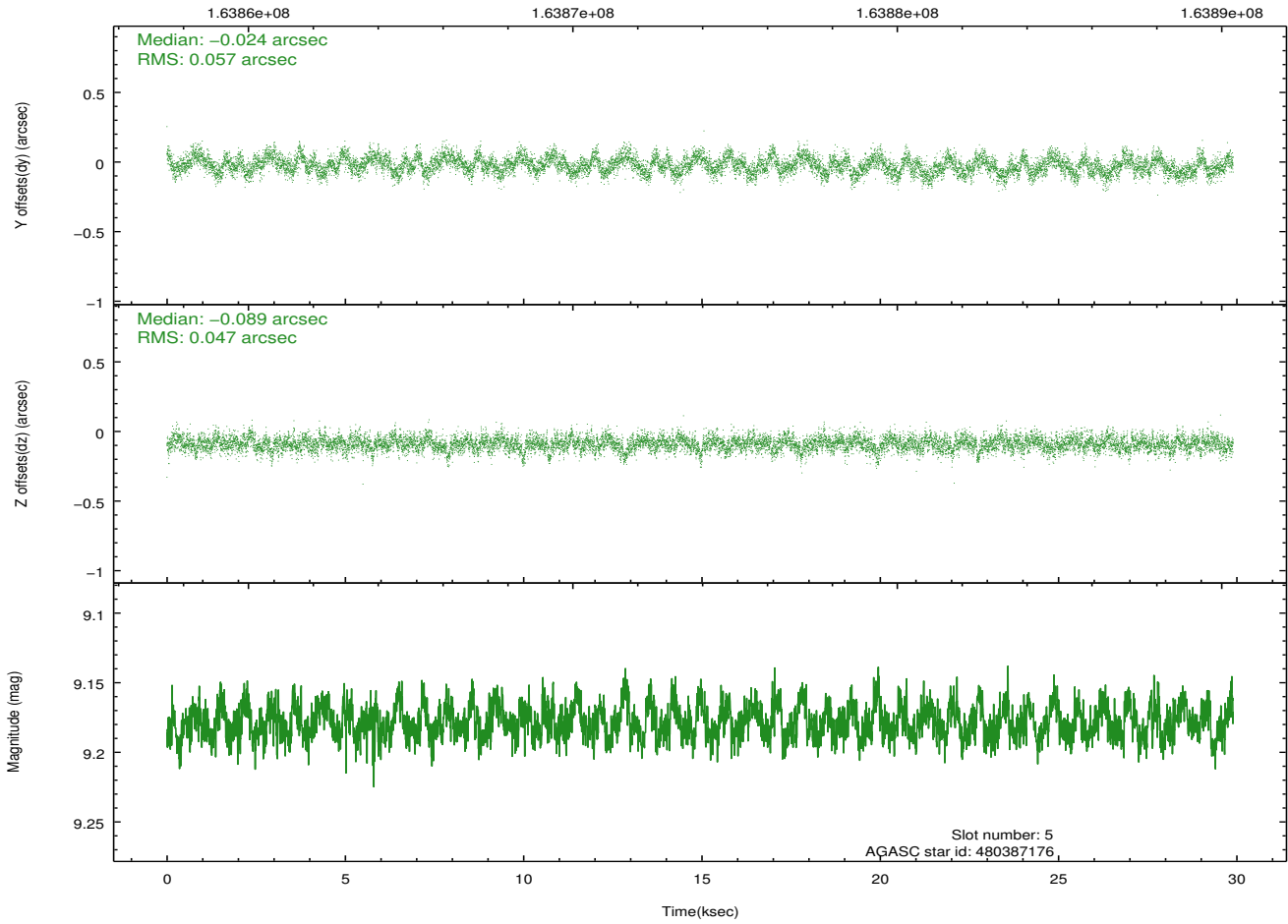
Time (s)



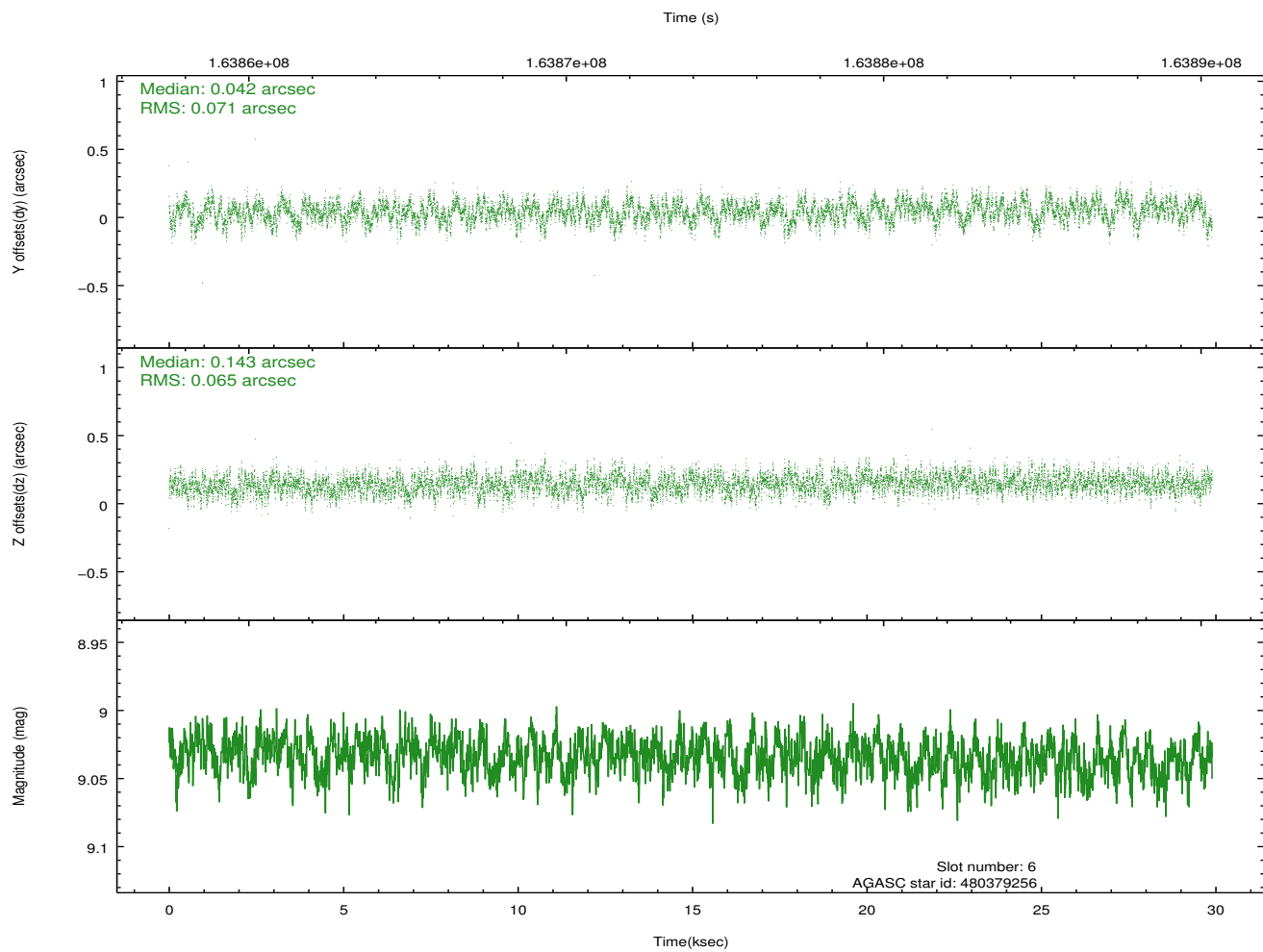
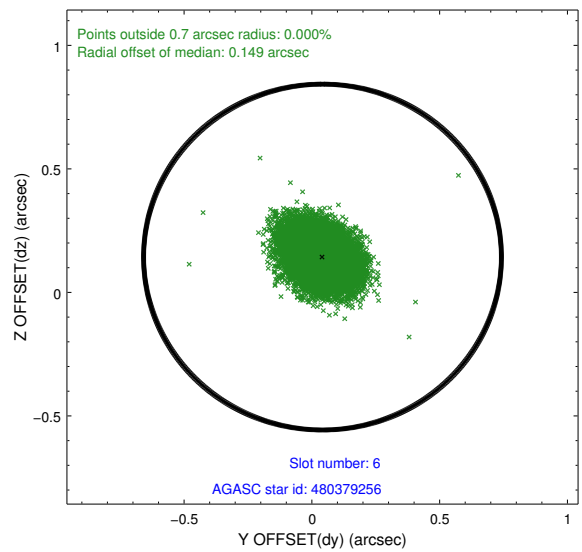
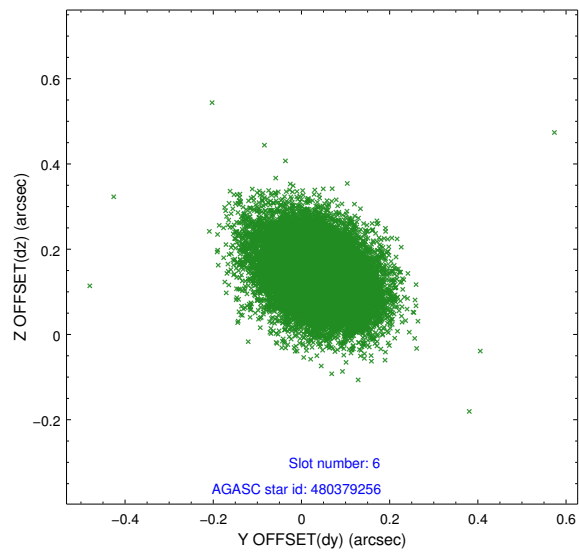
2.4.3 Slot 5



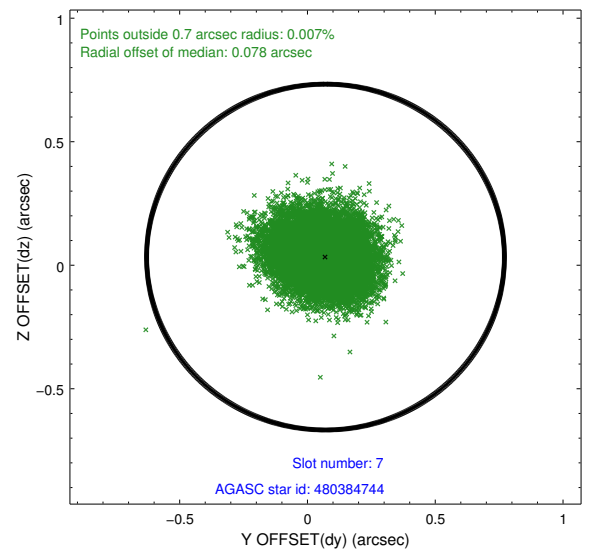
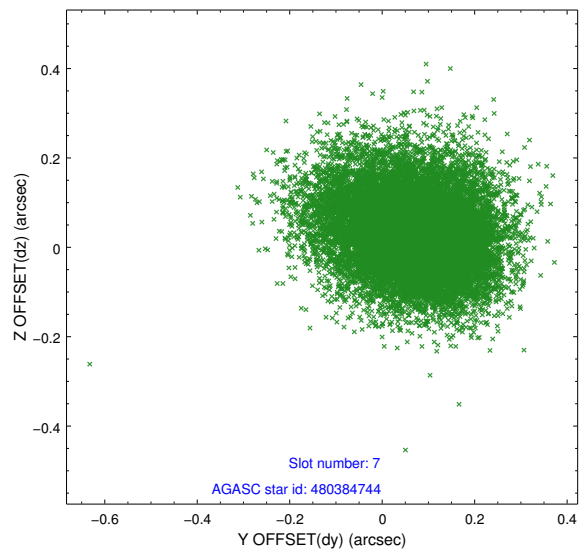
Time (s)



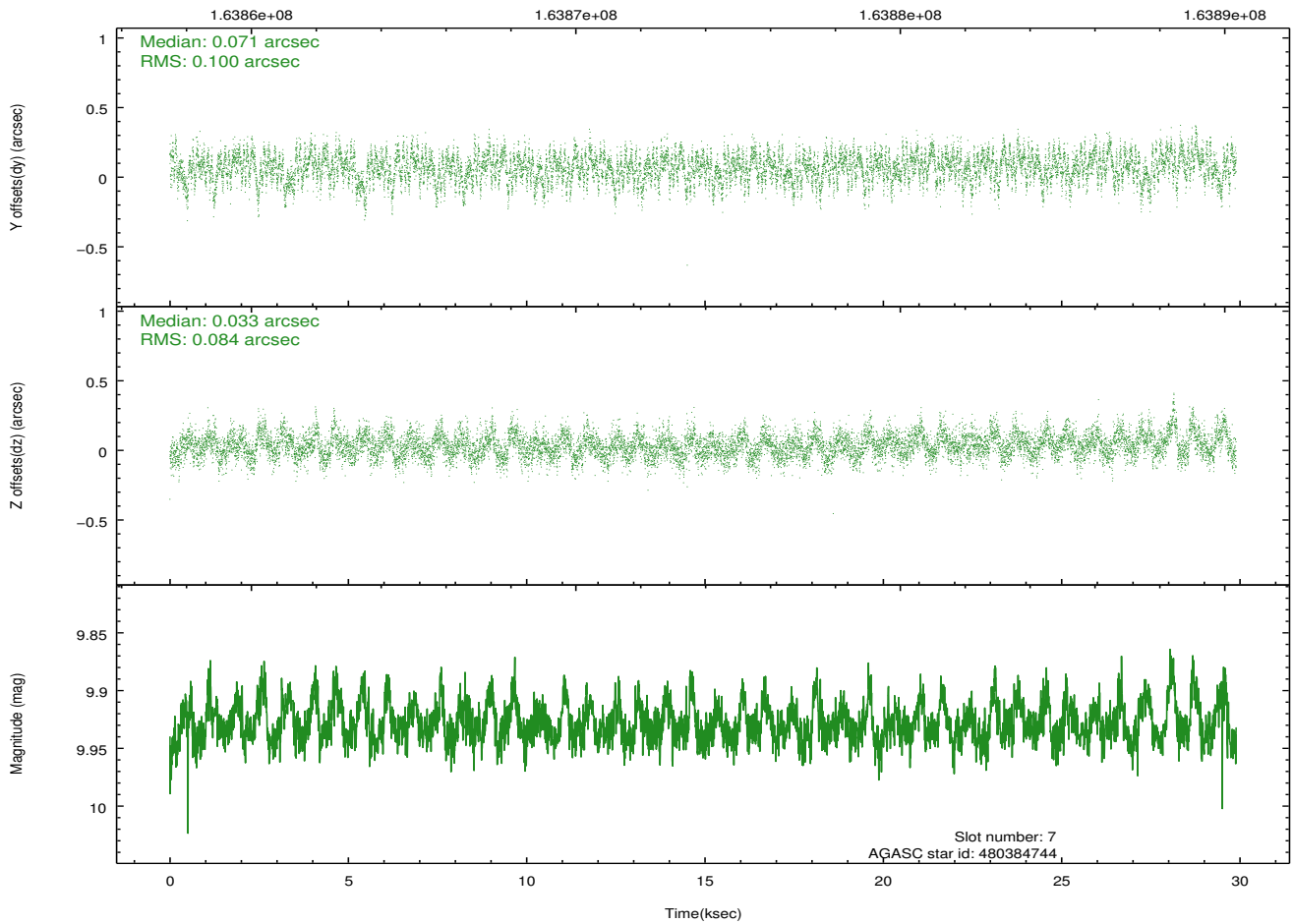
2.4.4 Slot 6



2.4.5 Slot 7

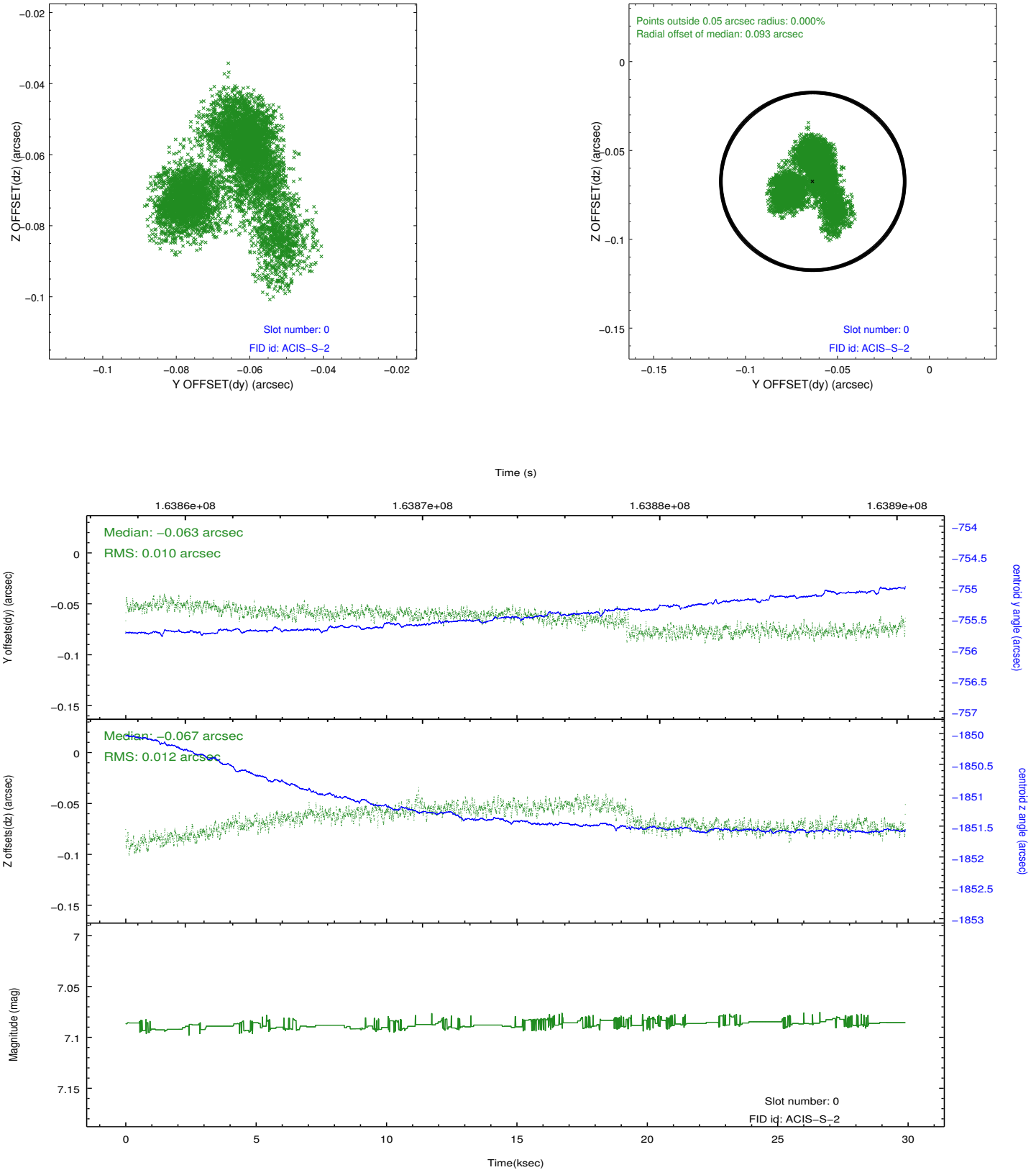


Time (s)

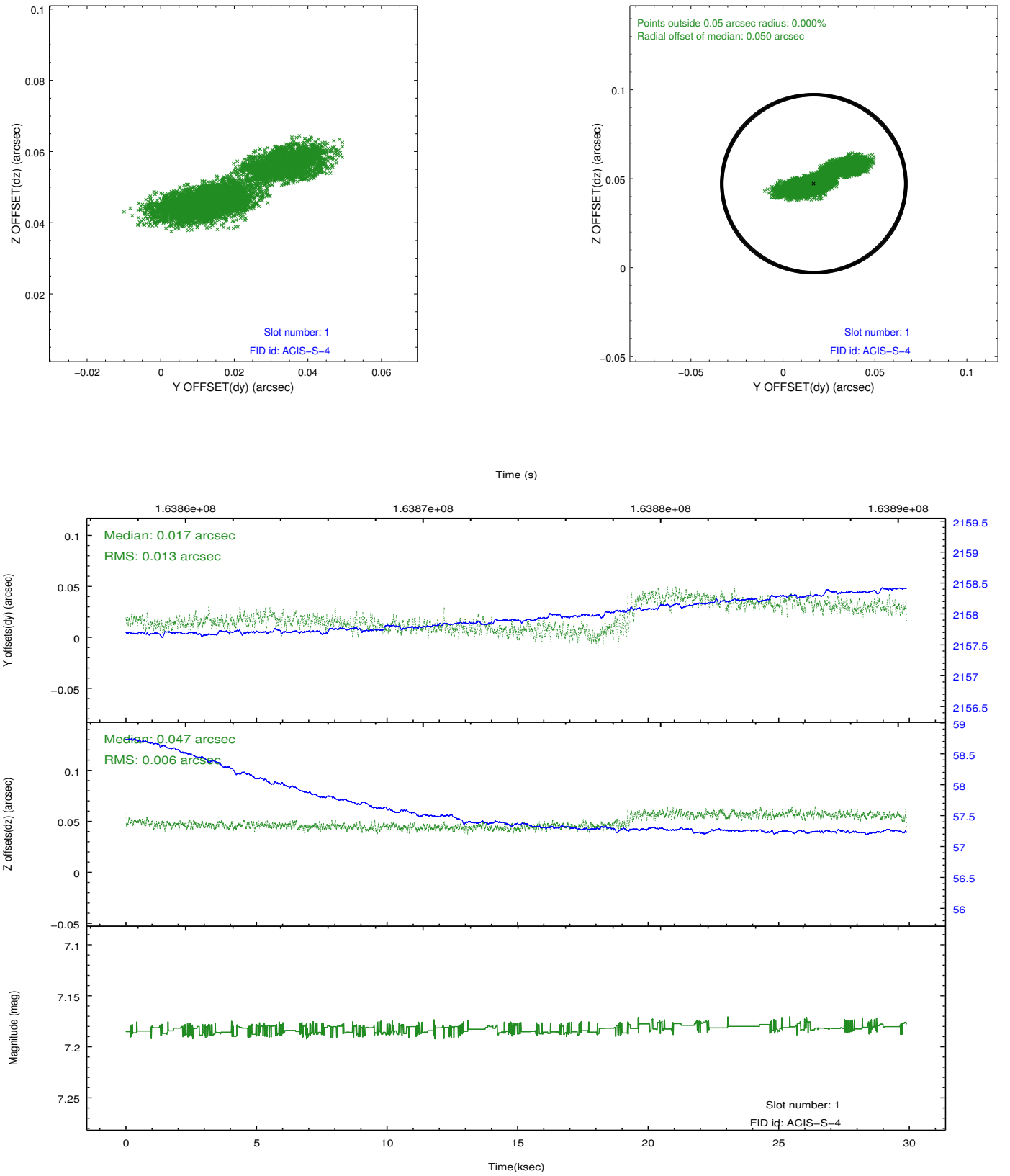


2.5 FID Slots

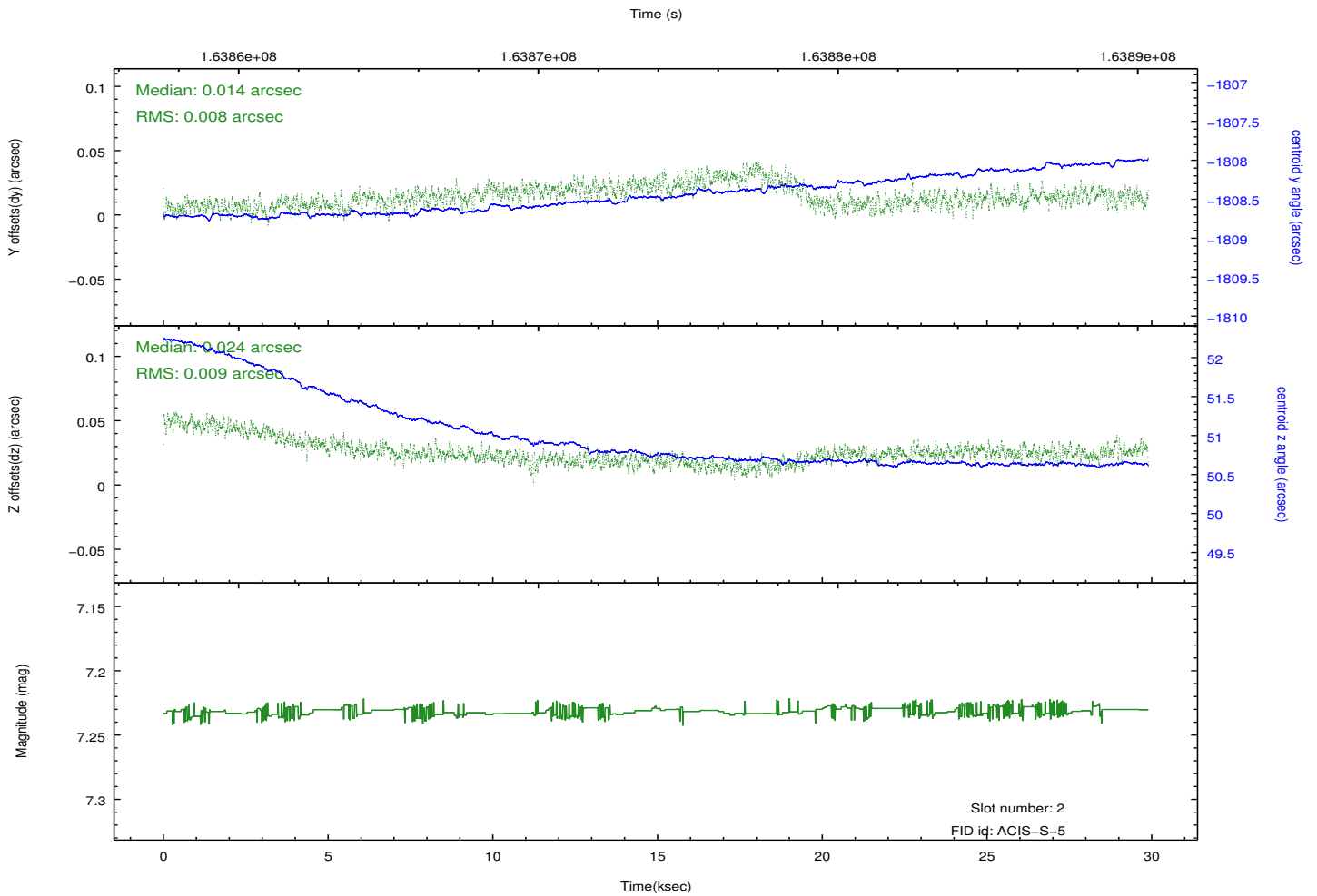
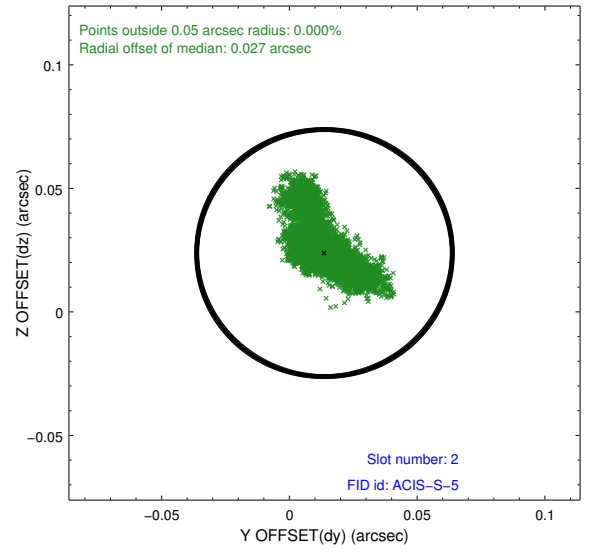
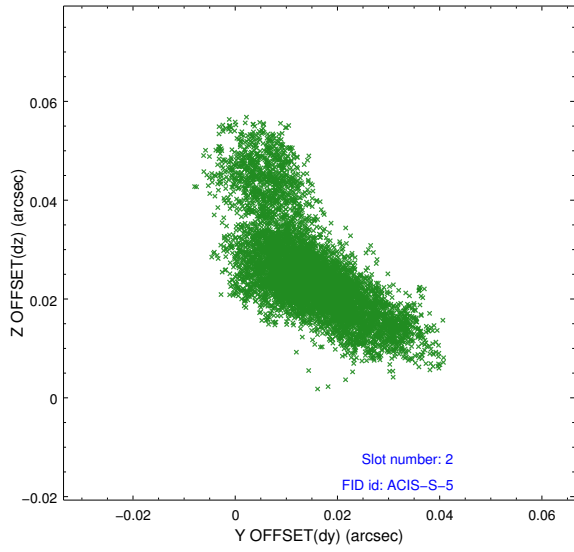
2.5.1 Slot 0



2.5.2 Slot 1



2.5.3 Slot 2



A Summary

A.1 Status

V&V Scientist	Jen Lauer
V&V Date (YYYY-MM-DD)	2012.11.07
V&V Edition	1
V&V Disposition and Status	OK
V&V Charge Time	29.896

A.2 Comments

Roll preference met. Joint Proposal: HST