

V&V Reference Report

L2 ASCDS Version : 8.4.5

Observation 4003 - L2 Version 4
Chandra X-Ray Center

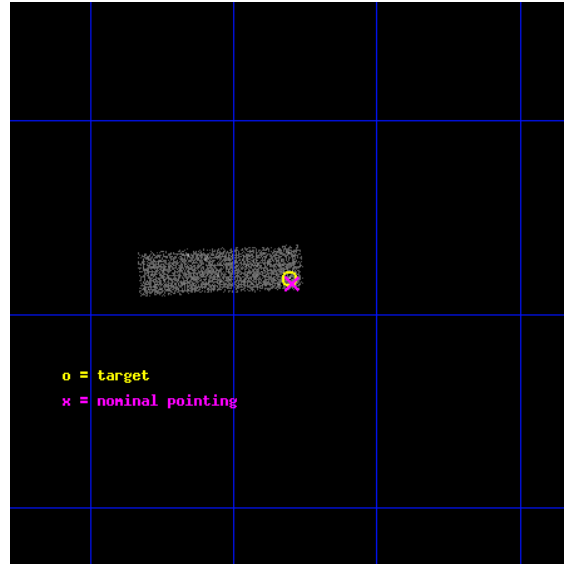
L2 Processing Date : Oct 25 2012

Contents

1	Front	2
2	OBI	3
2.1	OBI	3
2.1.1	Images	3
2.1.2	Bias	3
2.1.3	Parameters	4
2.1.4	Events	4
2.2	Compared Parameters	5
2.3	Aspect	6
2.4	Star Slots	9
2.4.1	Slot 3	9
2.4.2	Slot 4	10
2.4.3	Slot 5	11
2.4.4	Slot 6	12
2.4.5	Slot 7	13
2.5	FID Slots	14
2.5.1	Slot 0	14
2.5.2	Slot 1	15
2.5.3	Slot 2	16
A	Summary	17
A.1	Status	17
A.2	Comments	17

1 Front

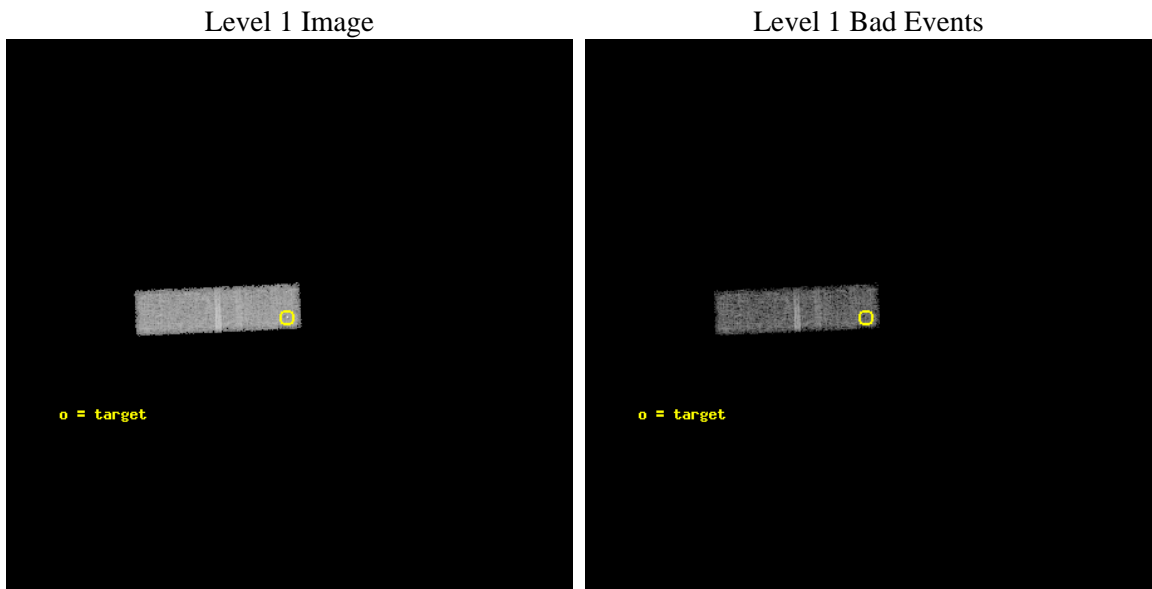
seq_num	700682	Sequence number
obs_id	4003	Observation id
title	THE NATURE OF THE ``COMPOSITE" SEYFERT/STAR-FORMING GALAXIES	Pr
observer	Dr Anna Wolter	Principal investigator
object	IRAS04392-0123	Source name
dtcycle	0	
cycle	P	events from which exps? Prim/Second/Both
ra_targ	70.45125	Observer's specified target RA [deg]
dec_targ	-1.302944	Observer's specified target Dec [deg]
ra_nom	70.449270577505	Nominal RA [deg]
dec_nom	-1.3071241336184	Nominal Dec [deg]
roll_nom	267.65276452557	Nominal Roll [deg]
revision	4	Processing version of data
ontime	24798.400369525	Sum of GTIs [s]
livetime	23588.319575312	Livetime [s]
ontime3	24798.400369525	Sum of GTIs [s]
l2events	5395	Number of level 2 events



2 OBI

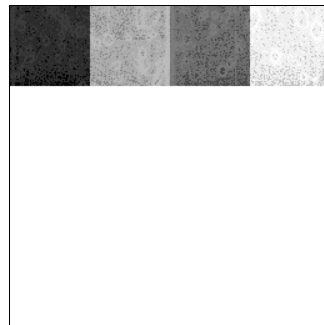
2.1 OBI

2.1.1 Images



2.1.2 Bias

Chip 3



2.1.3 Parameters

obi_num	0	Obi number	sched_exp_time	24200.000000	[s] Scheduled observation exposure time
ascdsver	8.4.5	Processing system revision	ontime	24798.400369525	Sum of GTIs [s]
caldbver	4.5.2	 	ontime3	24798.400369525	Sum of GTIs [s]
date	2012-10-25T14:41:09	Date and time of file creation	l1events	54416	Number of level 1 events
revision	4	Processing version of data			

2.1.4 Events

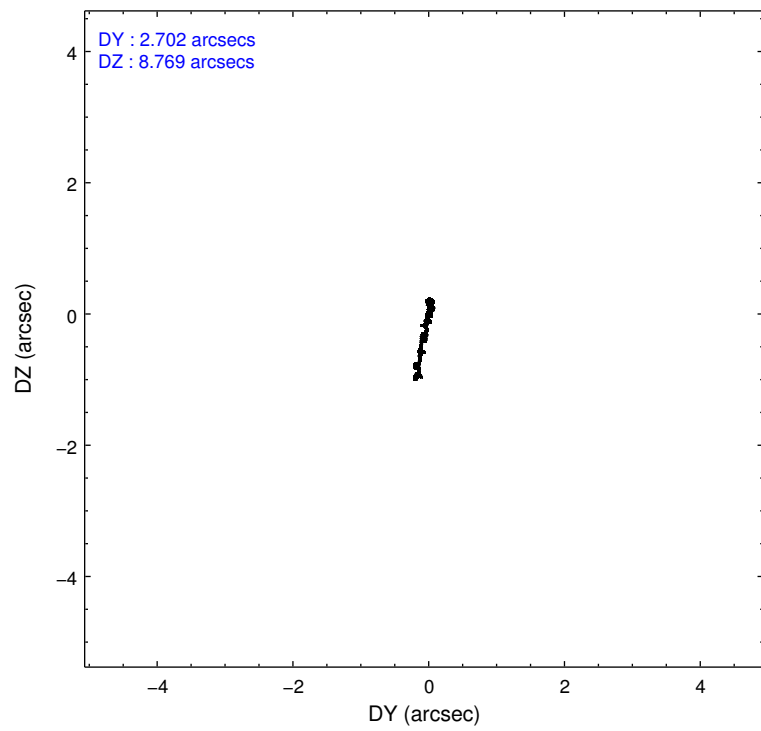
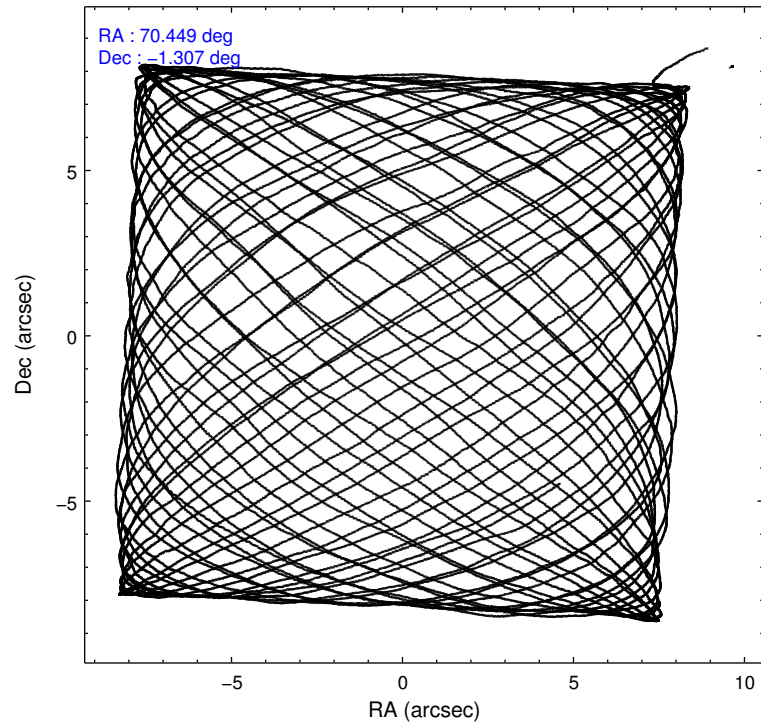
	ccd 3
level 1 events	54416
rejected events	48124
rejected %	88%

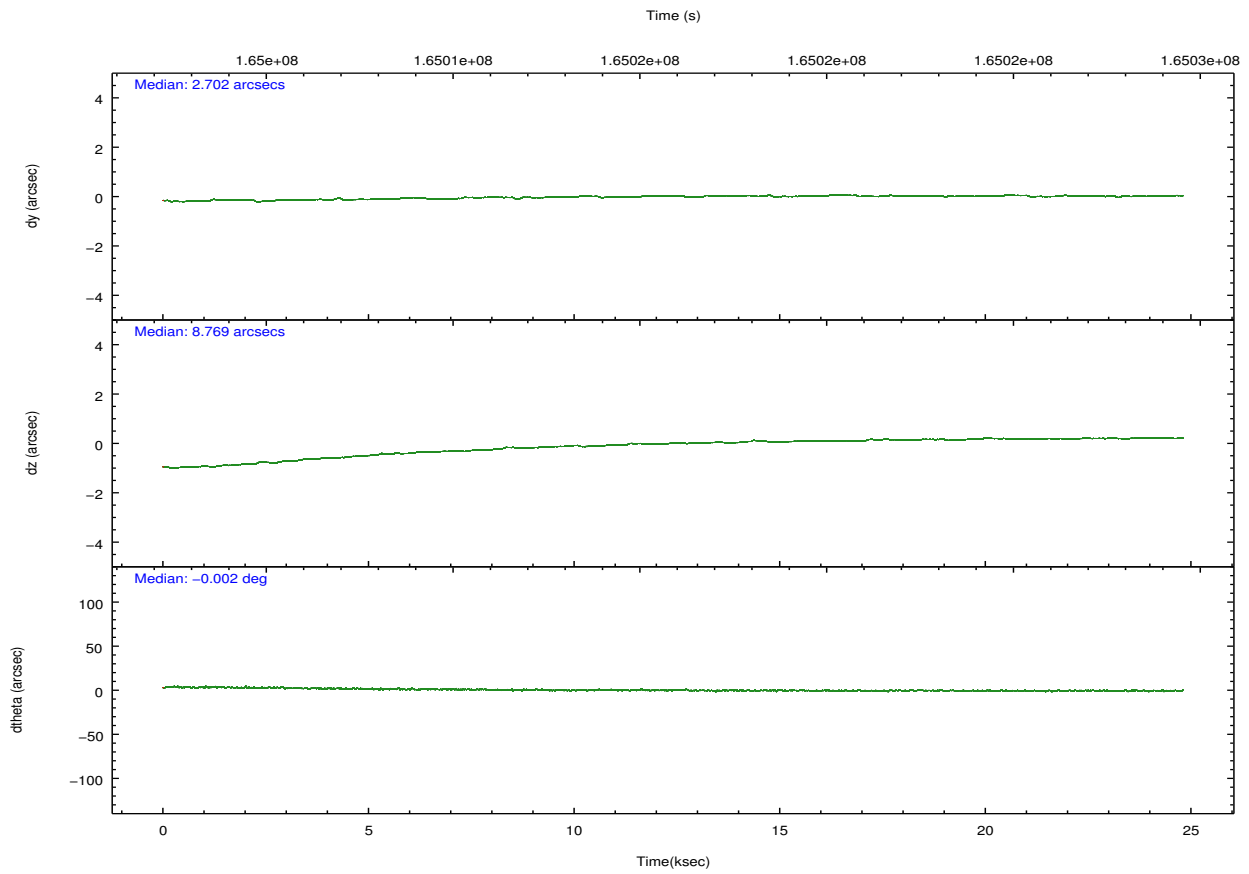
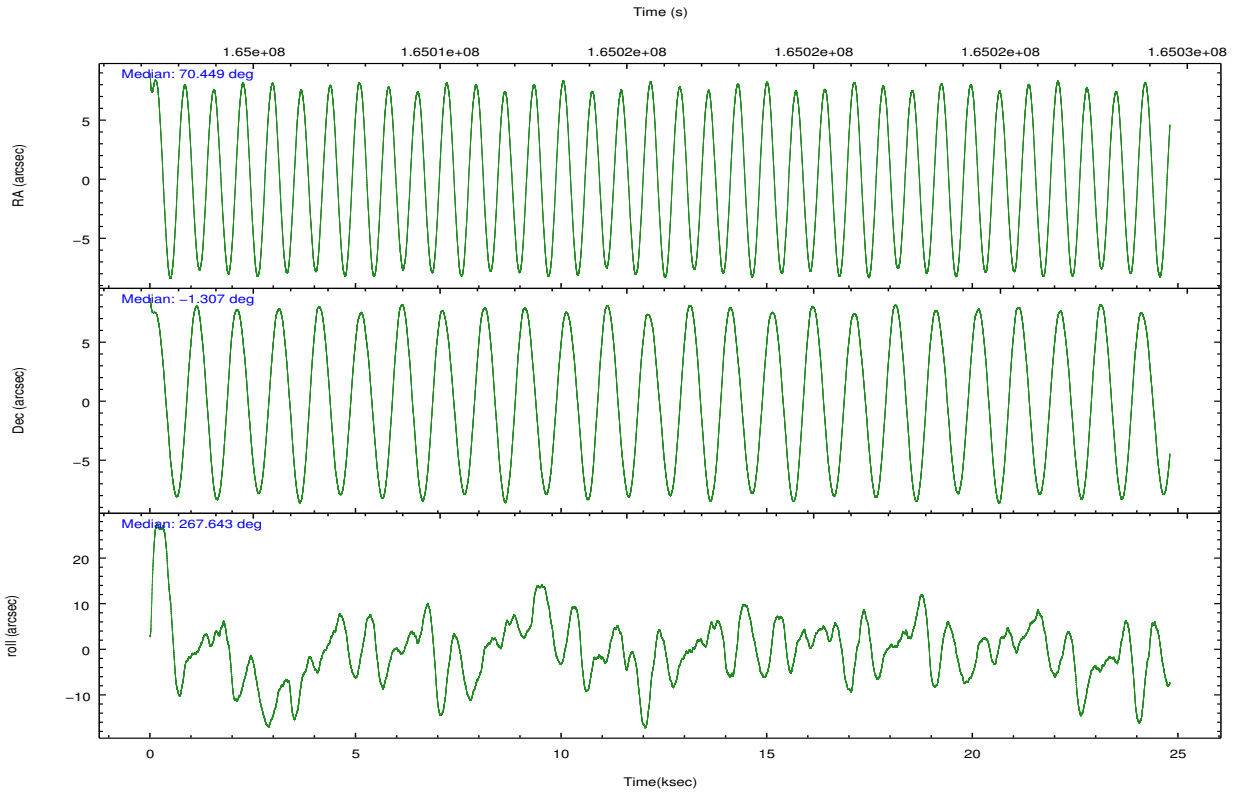
	ccd 3
grade 0 events	2615
	4%
grade 1 events	30
	0%
grade 2 events	944
	1%
grade 3 events	954
	1%
grade 4 events	913
	1%
grade 5 events	1960
	3%
grade 6 events	930
	1%
grade 7 events	46070
	84%

2.2 Compared Parameters

Parameter	Planned	Actual	Parameter	Planned	Actual
Instrument	ACIS	ACIS	Obspar format version number	7	7
Detector	ACIS-3	ACIS-3	Obspar file type	PREDICTED	ACTUAL
Grating	NONE	NONE	Obspar update status	NONE	UPDATED
Data mode	FAINT	FAINT	Number of optional ACIS chips dropped	0	0
Observation mode	POINTING	POINTING	On-chip summing requested	N	N
[deg] Pointing RA	70.436455	70.44927057750547	Subarray requested	CUSTOM	1/4
[deg] Pointing Dec	-1.282933	-1.307124133618365	Subarray start row	769	769
[deg] Pointing Roll	267.443795	267.6527645255732	Subarray row count	256	256
[mm] SIM focus pos	-0.782348	-0.7809083437167272	Alternating exposures requested	N	N
[mm] SIM defocus	0	0.001439871863259334	[s] Primary exposure time	0.000000	0.8
[mm] SIM translation stage pos	-233.592463	-233.5874344608287			
[mm] SIM translation stage offset	0	-0.005018542100998502			
[s] Observation start time (MET)	165004095.184000	165002929.1461			
Observation start date	2003-03-25T18:27:11	2003-03-25T18:08:49			
[s] Observation end time (MET)	165028295.184000	165029134.29721			
Observation end date	2003-03-26T01:10:31	2003-03-26T01:25:34			
Read mode	TIMED	TIMED			

2.3 Aspect



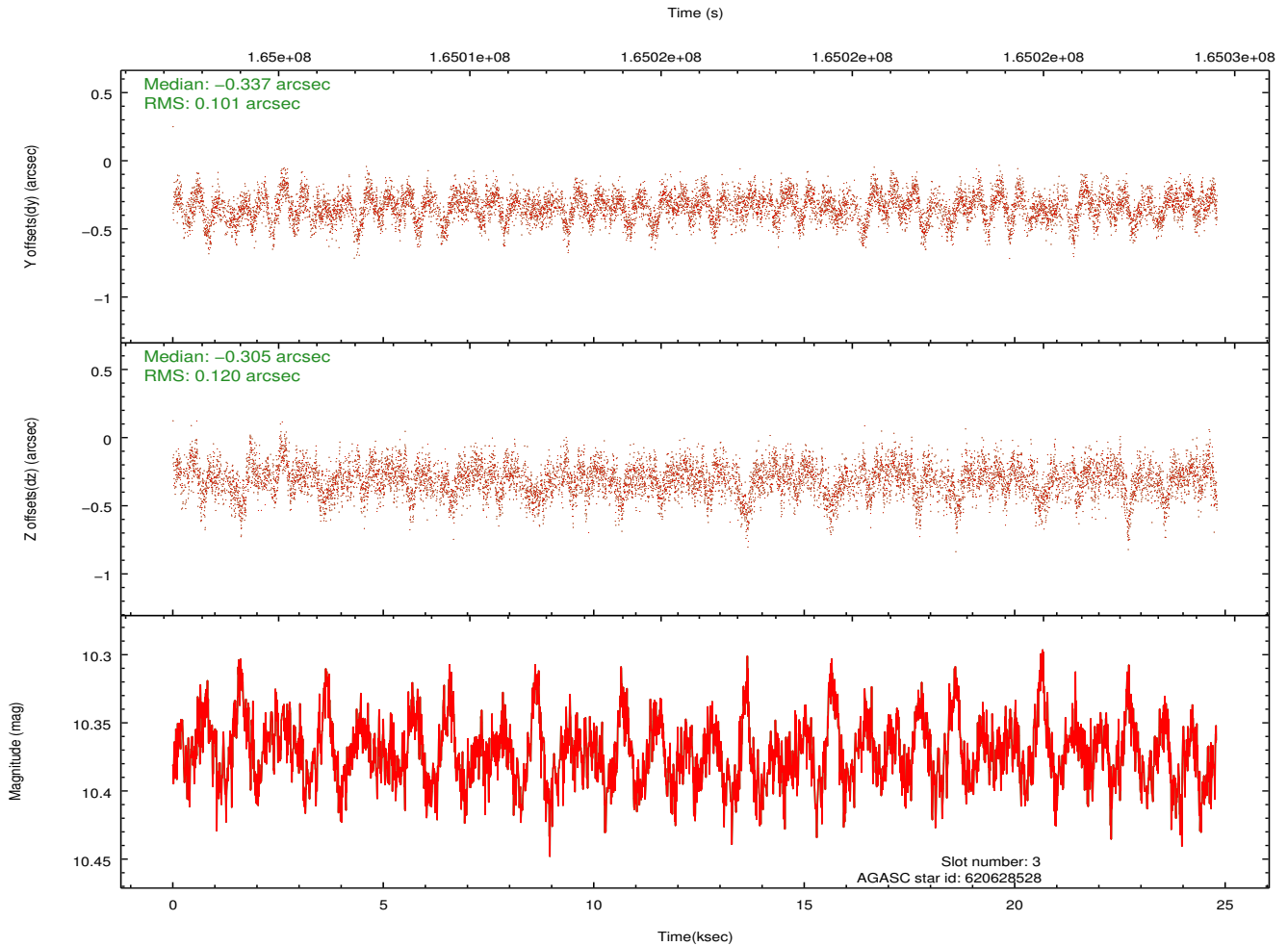
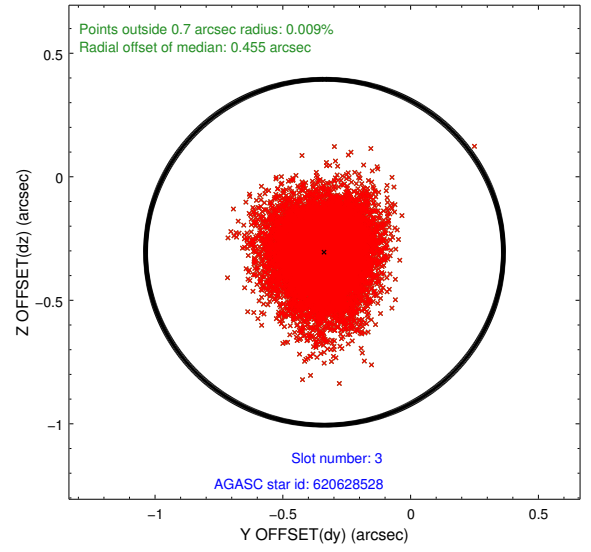
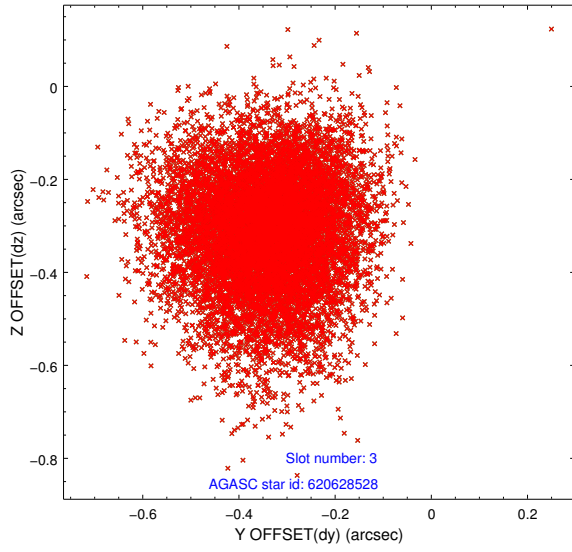


Slot Statistics

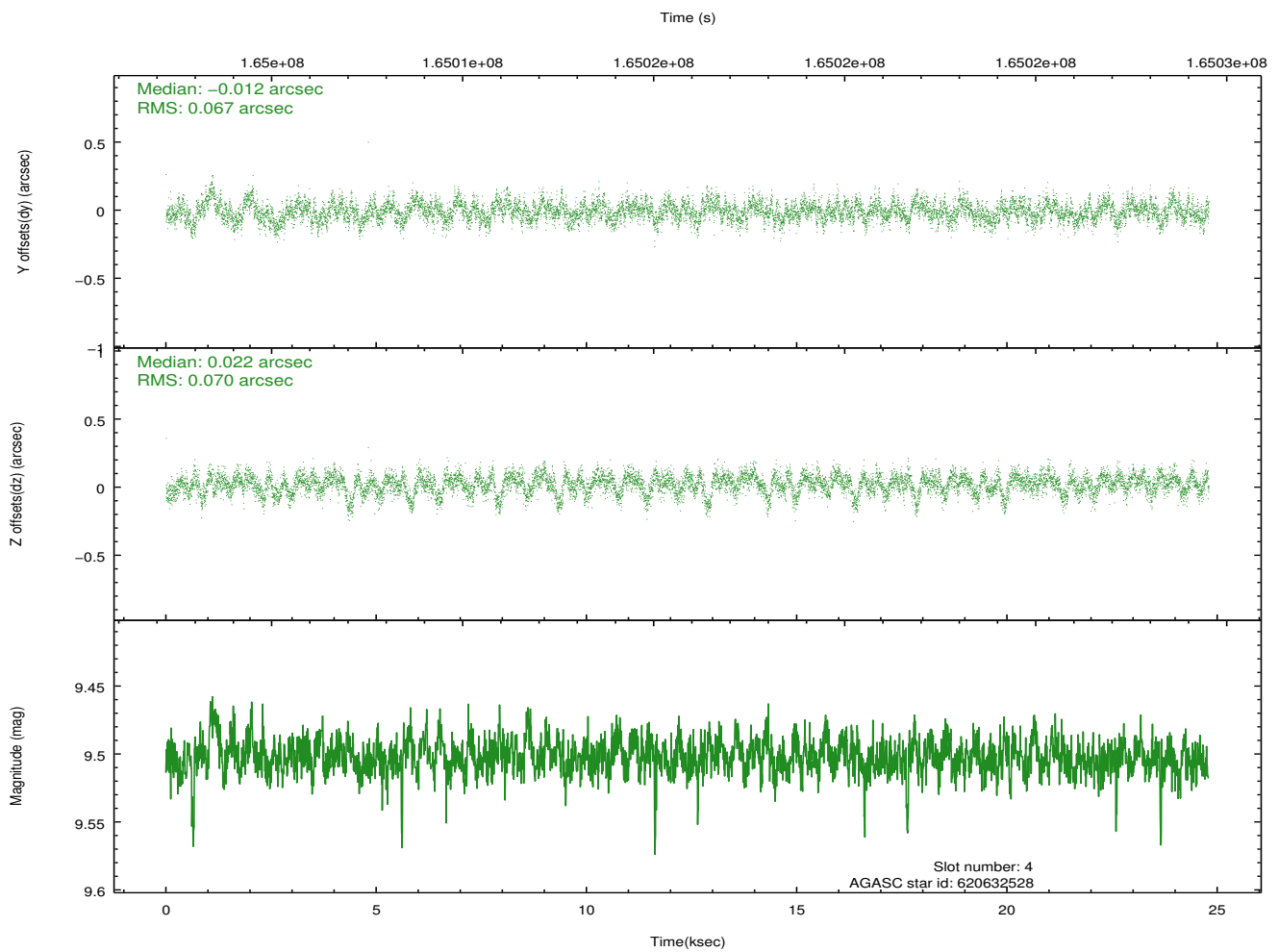
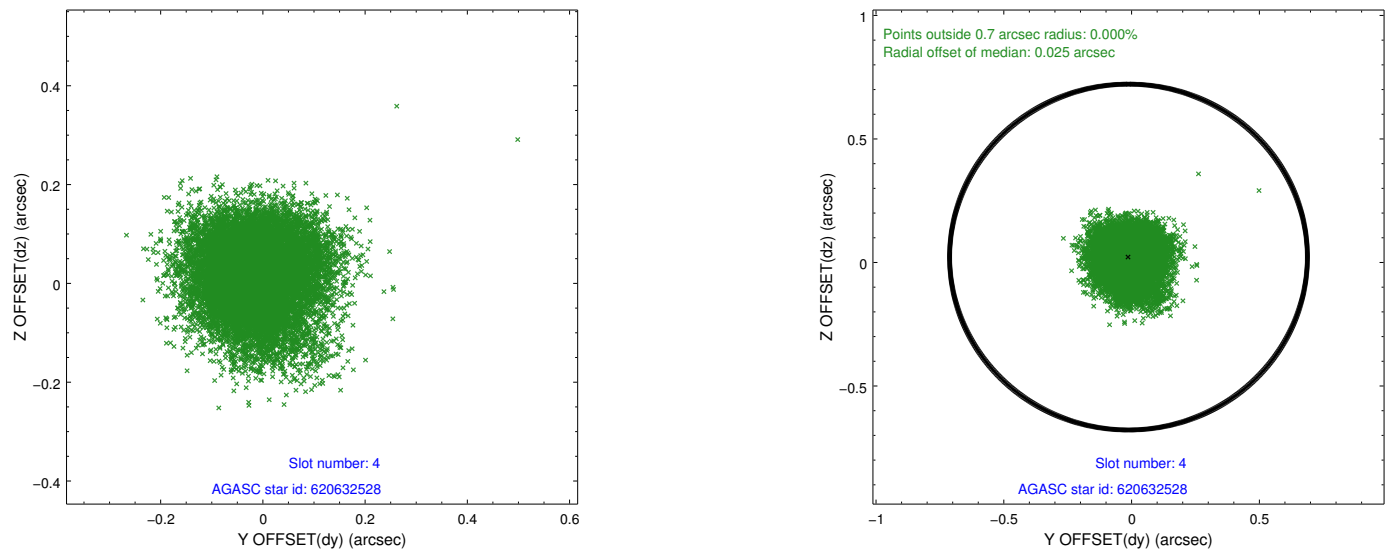
slot	status	id	mag	n_pts	med_dy	med_dz	dr1	dr2	ra	dec	mean_y	mean_z
0	FID	ACIS-I-1	7.24	6049	-0.027	0.062	0.011	0.030	0.000000	0.000000	937.11	-832.00
1	FID	ACIS-I-5	7.23	6048	-0.069	0.027	0.009	0.020	0.000000	0.000000	-1810.98	1065.40
2	FID	ACIS-I-6	7.26	6049	0.004	-0.018	0.010	0.021	0.000000	0.000000	402.55	1709.99
3	BAD	620628528	10.37	11111	-0.337	-0.305	0.168	0.274	69.820993	-0.850639	-1455.38	-2283.04
4	GUIDE	620632528	9.50	12080	-0.012	0.022	0.102	0.168	70.573597	-1.016236	-980.95	450.18
5	GUIDE	620634840	9.90	11817	0.187	0.057	0.168	0.281	70.068280	-1.456025	682.43	-1295.44
6	GUIDE	620635144	8.15	12097	-0.080	0.150	0.072	0.111	70.877923	-1.111347	-687.75	1559.96
7	GUIDE	620636208	9.18	12075	0.228	0.077	0.199	0.280	70.536222	-1.664967	1358.49	420.66

2.4 Star Slots

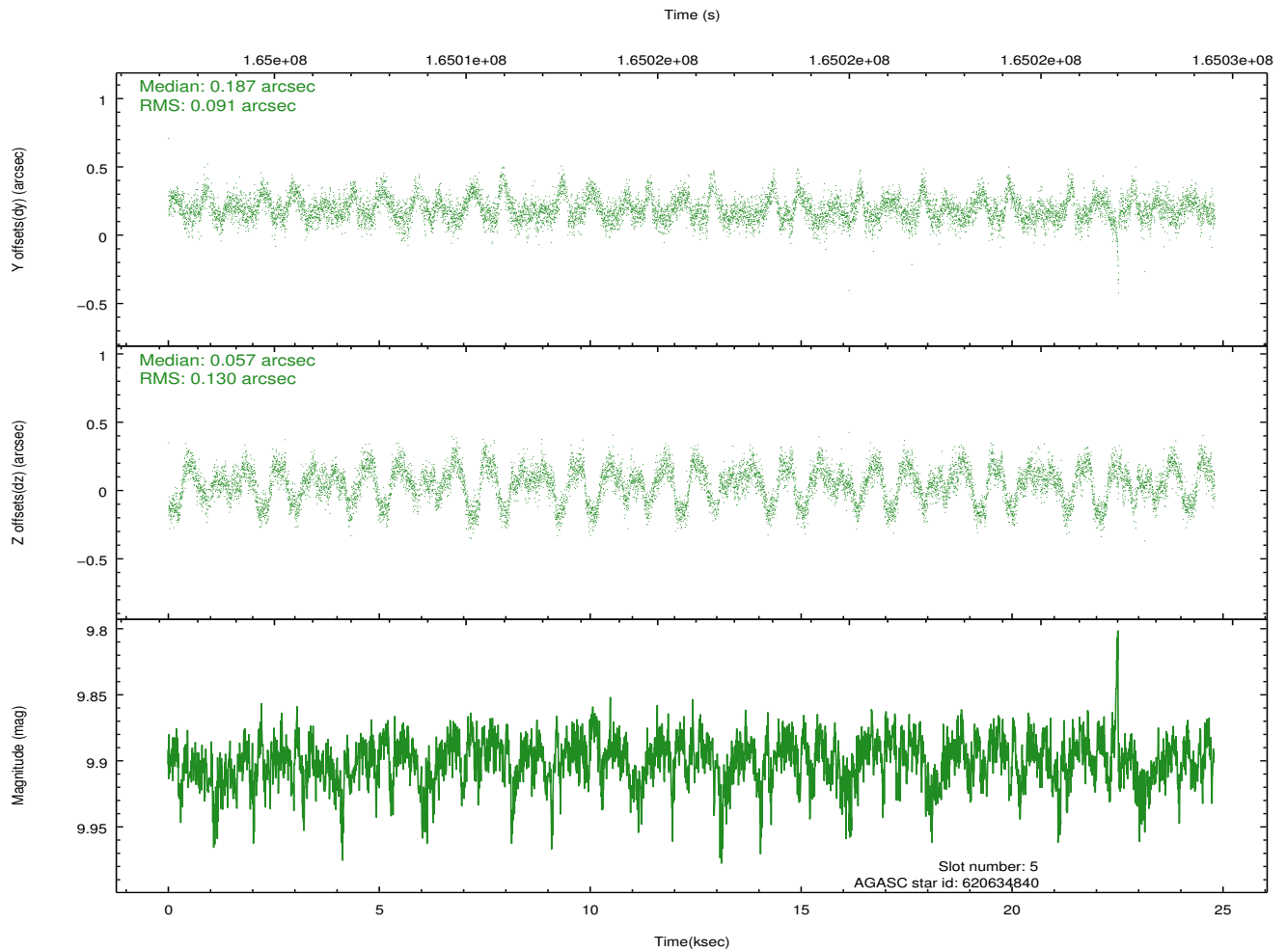
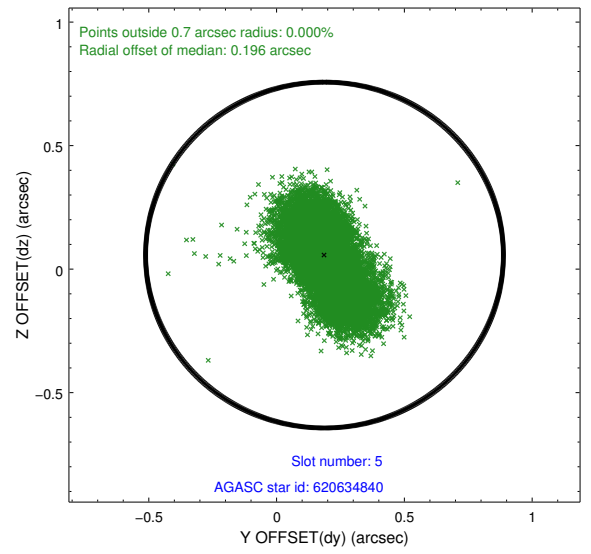
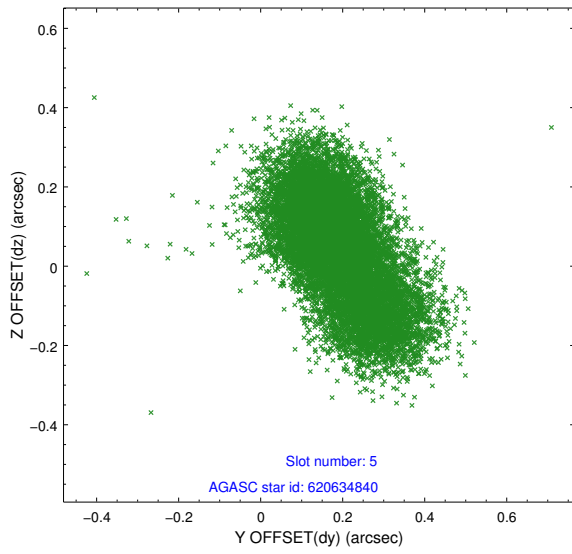
2.4.1 Slot 3



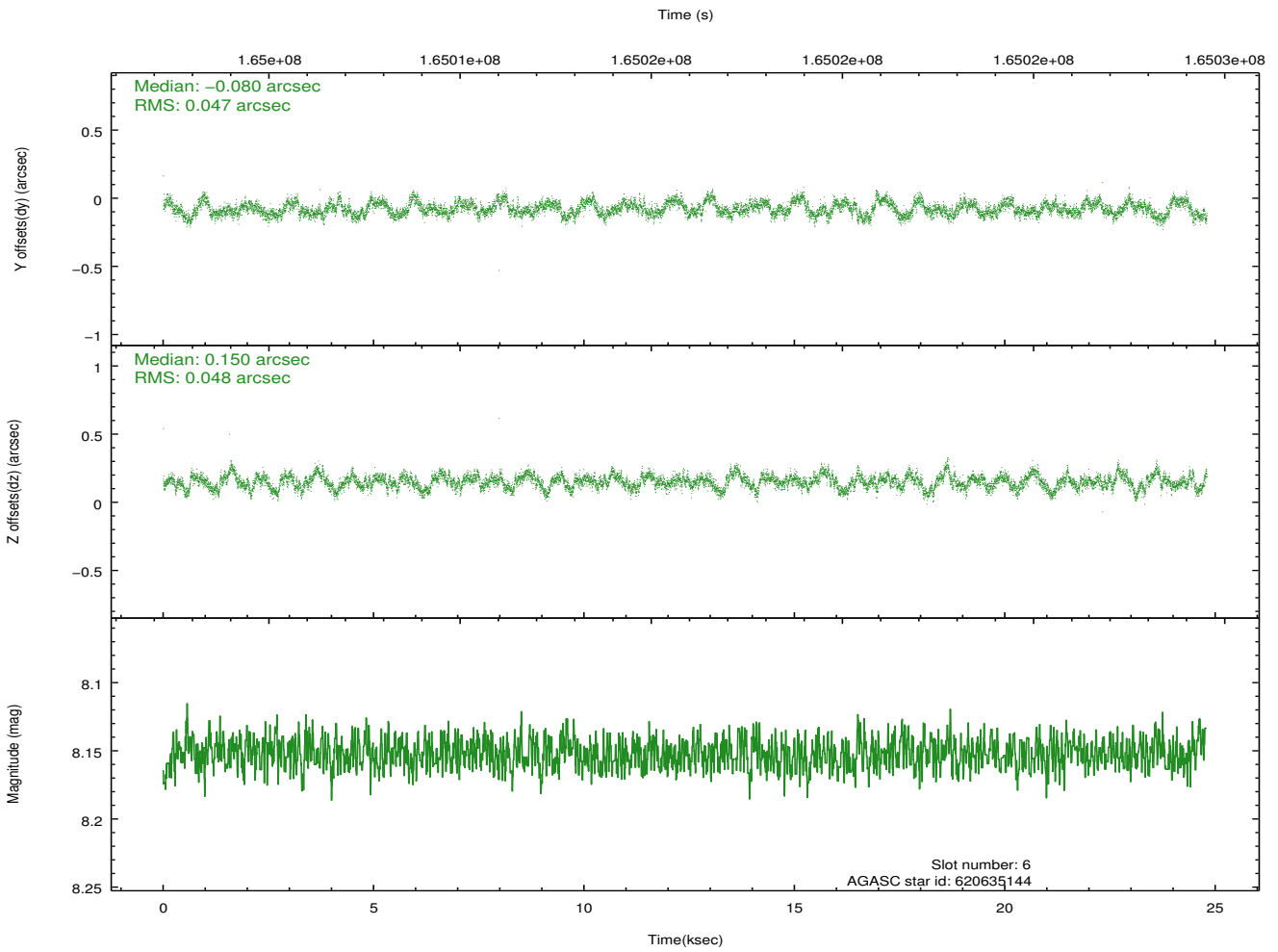
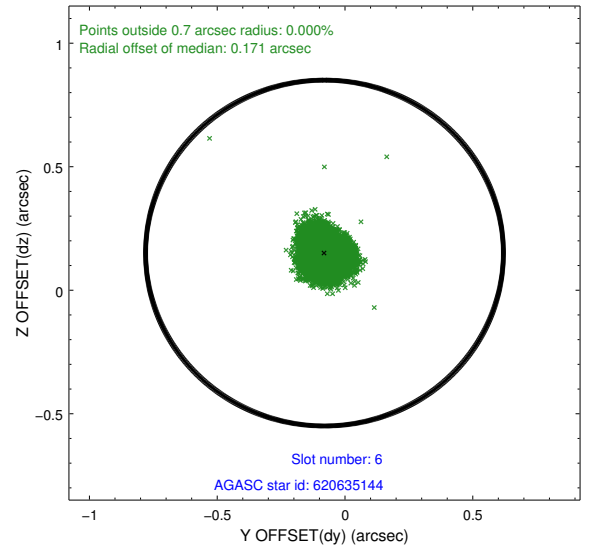
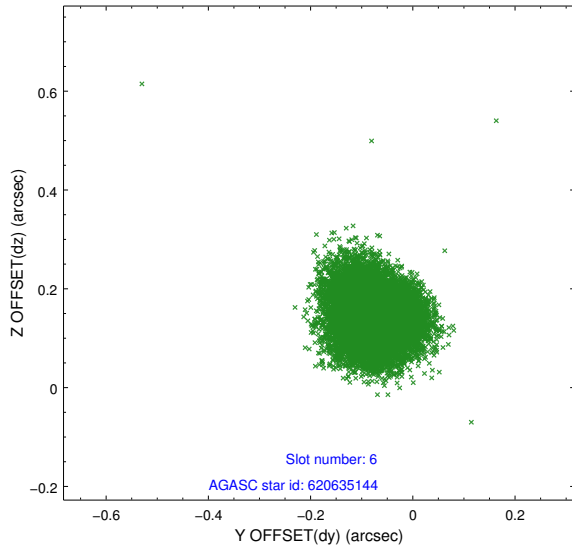
2.4.2 Slot 4



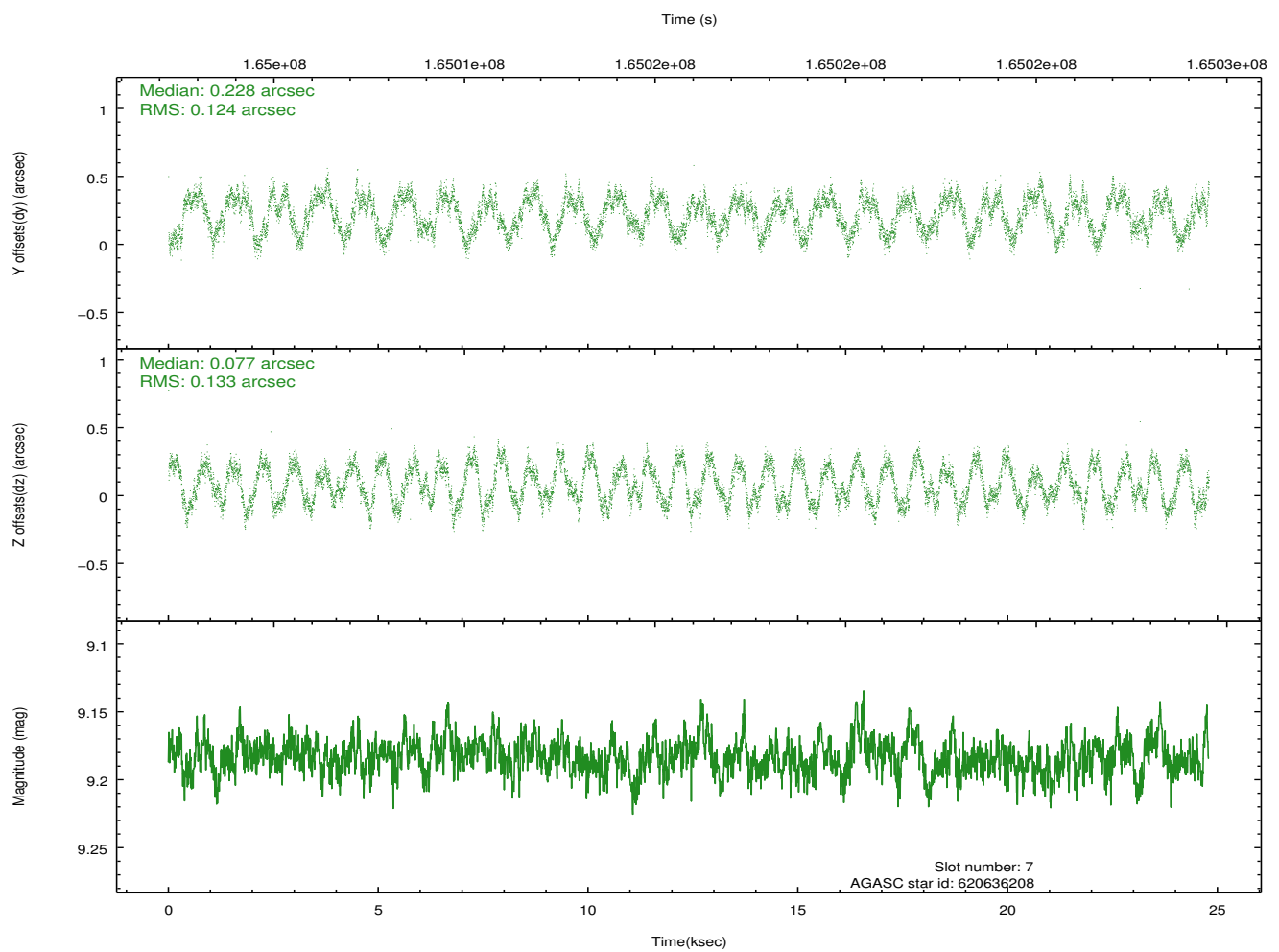
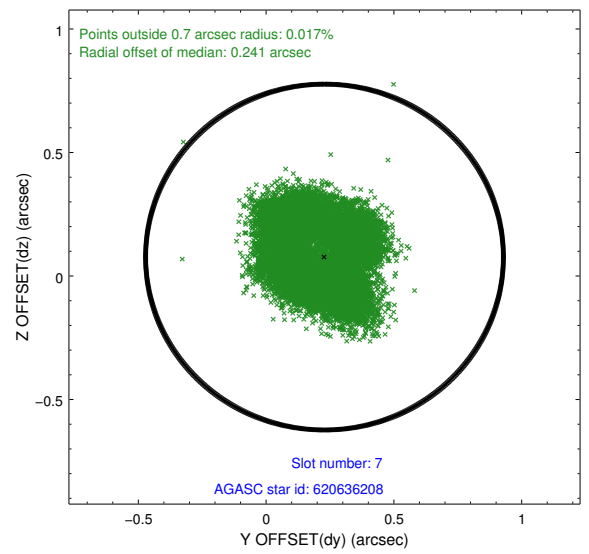
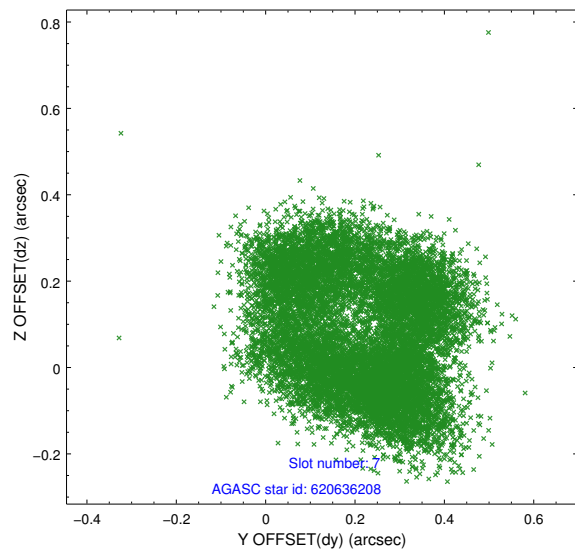
2.4.3 Slot 5



2.4.4 Slot 6

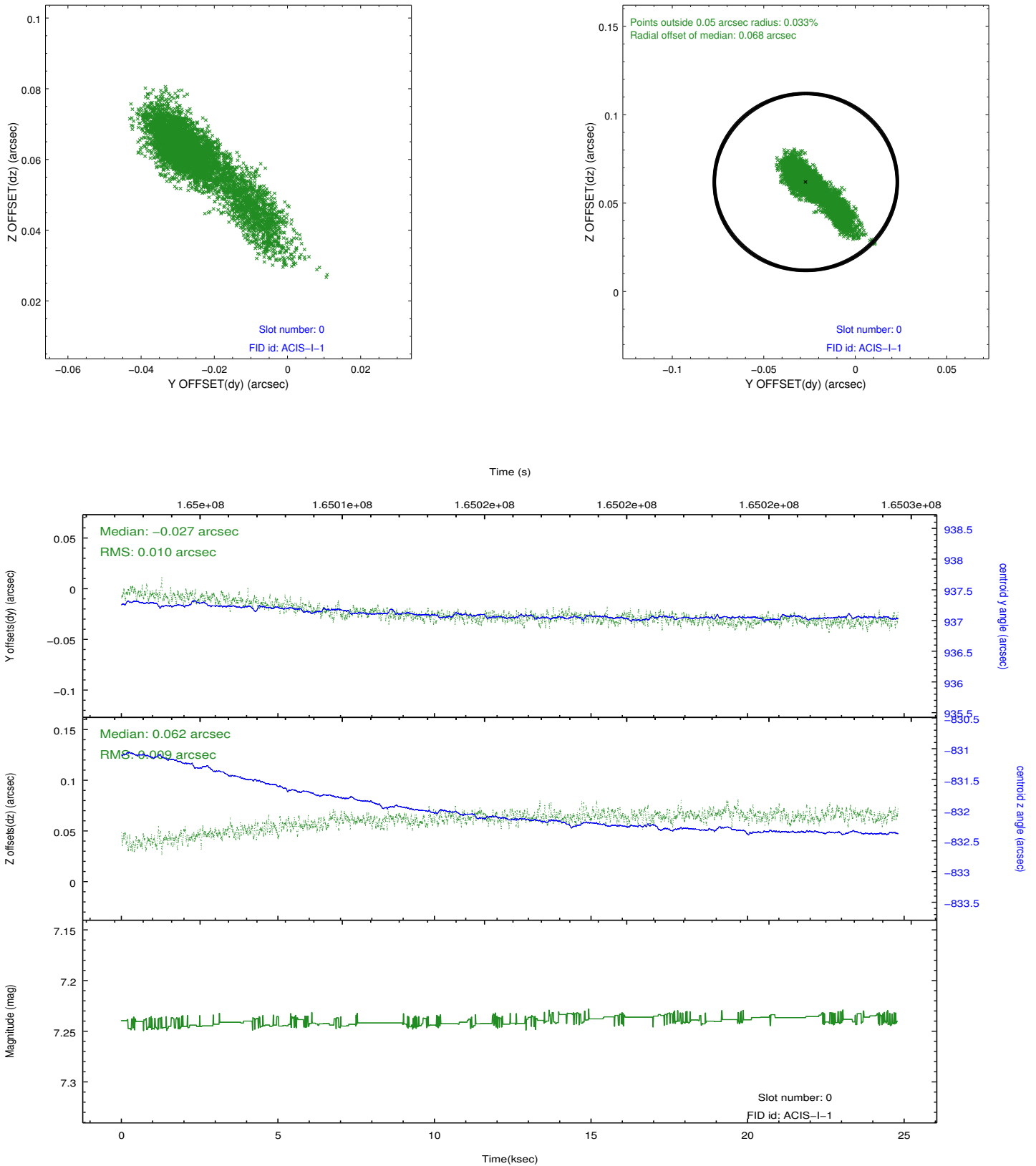


2.4.5 Slot 7

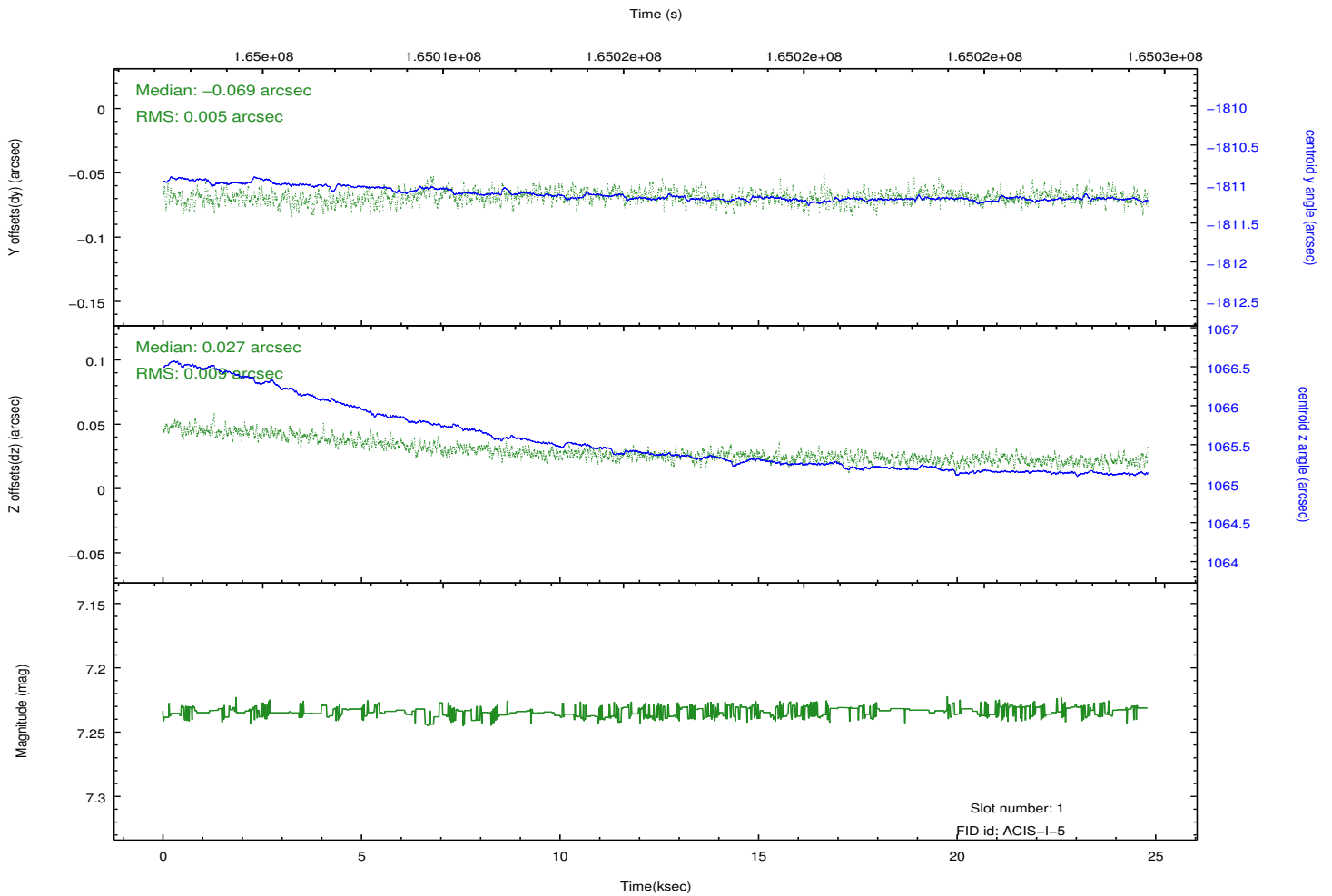
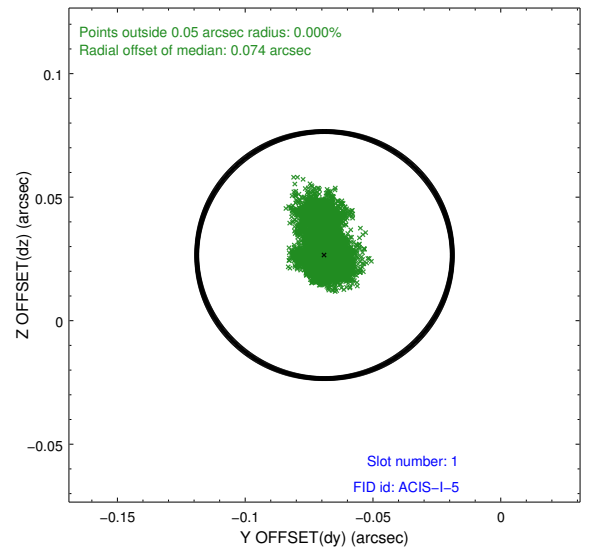
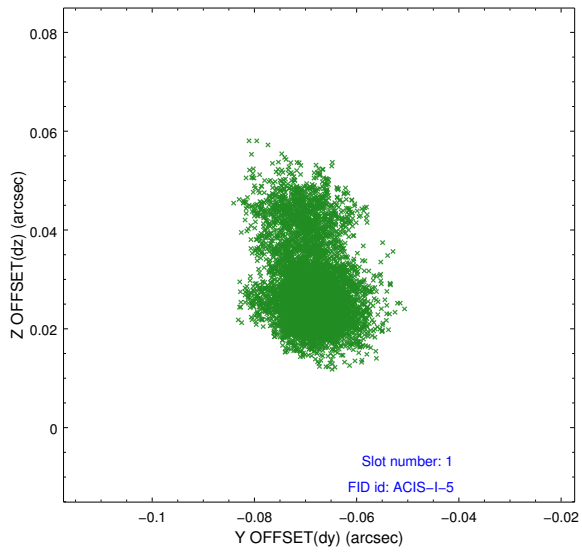


2.5 FID Slots

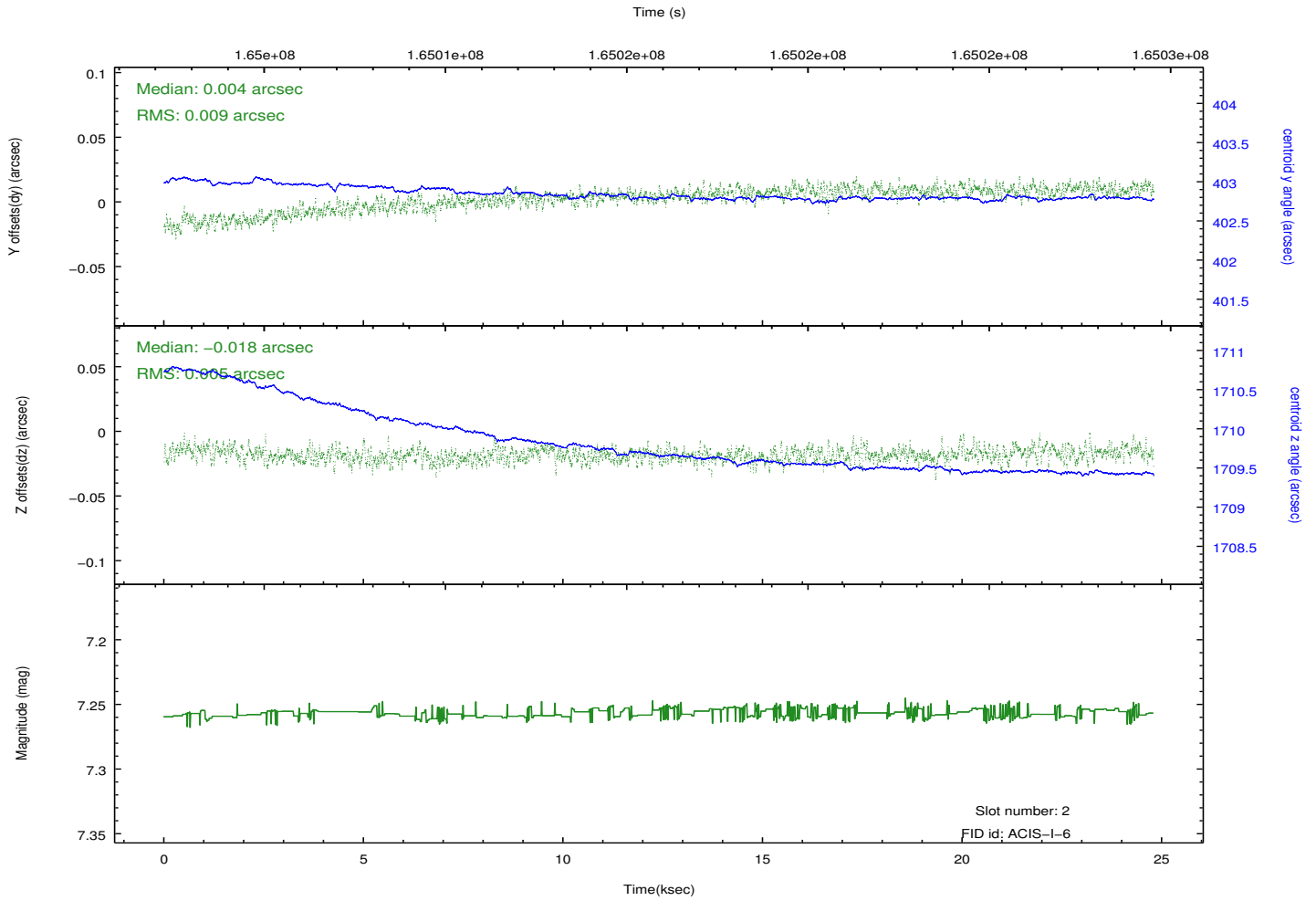
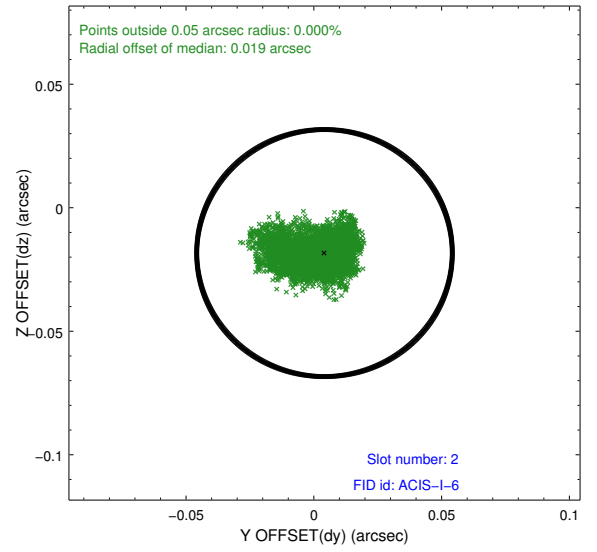
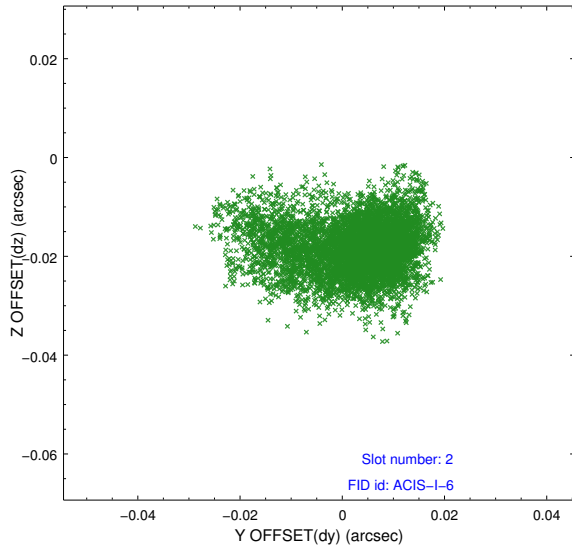
2.5.1 Slot 0



2.5.2 Slot 1



2.5.3 Slot 2



A Summary

A.1 Status

V&V Scientist	Jen Lauer
V&V Date (YYYY-MM-DD)	2012.11.09
V&V Edition	1
V&V Disposition and Status	OK
V&V Charge Time	24.796

A.2 Comments