

V&V Reference Report

L2 ASCDS Version : 8.4.5

Observation 4103 - L2 Version 4
Chandra X-Ray Center

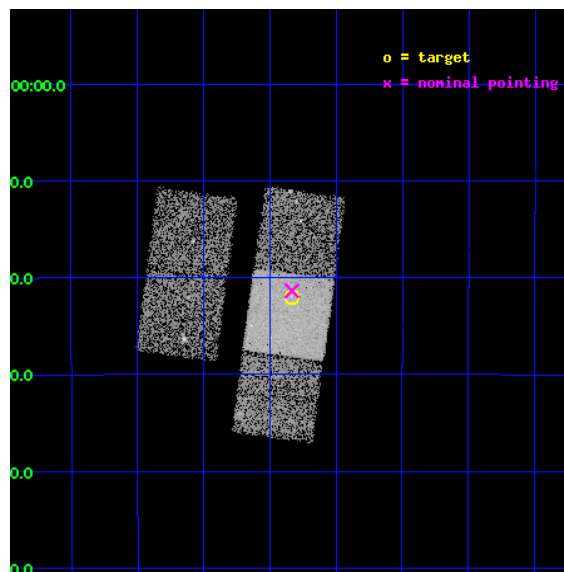
L2 Processing Date : Nov 1 2012

Contents

1	Front	2
2	OBI	3
2.1	OBI	3
2.1.1	Images	3
2.1.2	Bias	3
2.1.3	Parameters	4
2.1.4	Events	4
2.2	Compared Parameters	5
2.3	Aspect	6
2.4	Star Slots	9
2.4.1	Slot 3	9
2.4.2	Slot 4	10
2.4.3	Slot 5	11
2.4.4	Slot 6	12
2.4.5	Slot 7	13
2.5	FID Slots	14
2.5.1	Slot 0	14
2.5.2	Slot 1	15
2.5.3	Slot 2	16
A	Summary	17
A.1	Status	17
A.2	Comments	17

1 Front

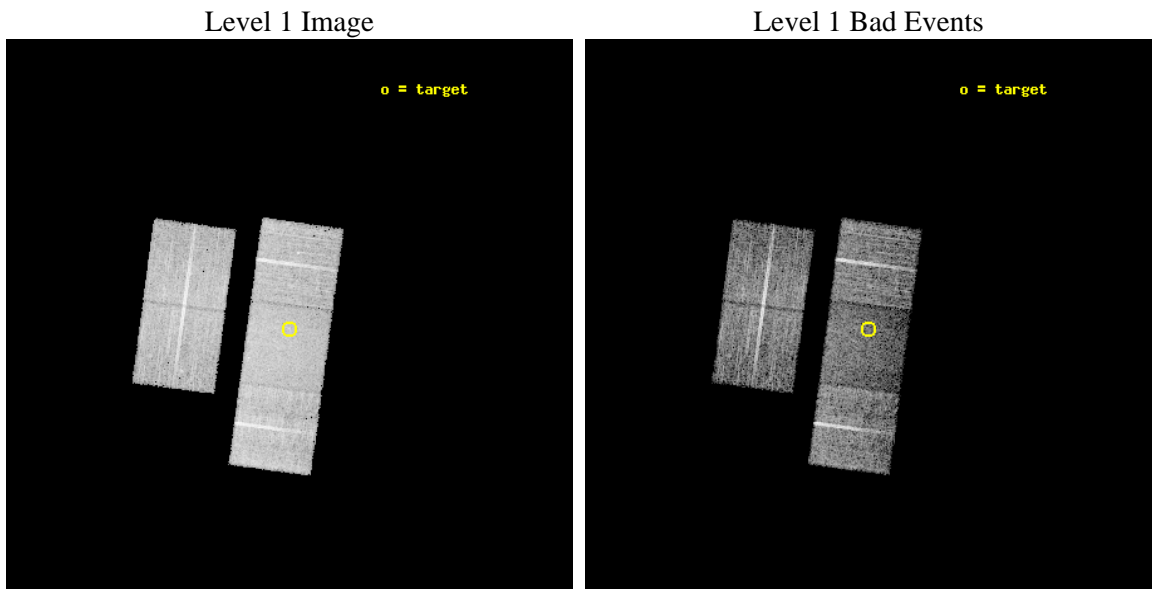
seq_num	700782	Sequence number
obs_id	4103	Observation id
title	THE X-RAY PROPERTIES OF ULTRALUMINOUS INFRARED GALAXIES (ULIGS)	Pr
observer	Professor Andrew Wilson	Principal investigator
object	F01004-2237	Source name
dtcycle	0	
cycle	P	events from which exps? Prim/Second/Both
ra_targ	15.707917	Observer's specified target RA [deg]
dec_targ	-22.365833	Observer's specified target Dec [deg]
ra_nom	15.708377553798	Nominal RA [deg]
dec_nom	-22.356143415744	Nominal Dec [deg]
roll_nom	97.73080406887	Nominal Roll [deg]
revision	4	Processing version of data
ontime	10102.579197049	Sum of GTIs [s]
livetime	9970.5815624291	Livetime [s]
ontime2	10102.415066928	Sum of GTIs [s]
ontime3	10093.074196398	Sum of GTIs [s]
ontime6	10099.397216737	Sum of GTIs [s]
ontime7	10102.579197049	Sum of GTIs [s]
ontime8	10102.456077039	Sum of GTIs [s]
l2events	45235	Number of level 2 events



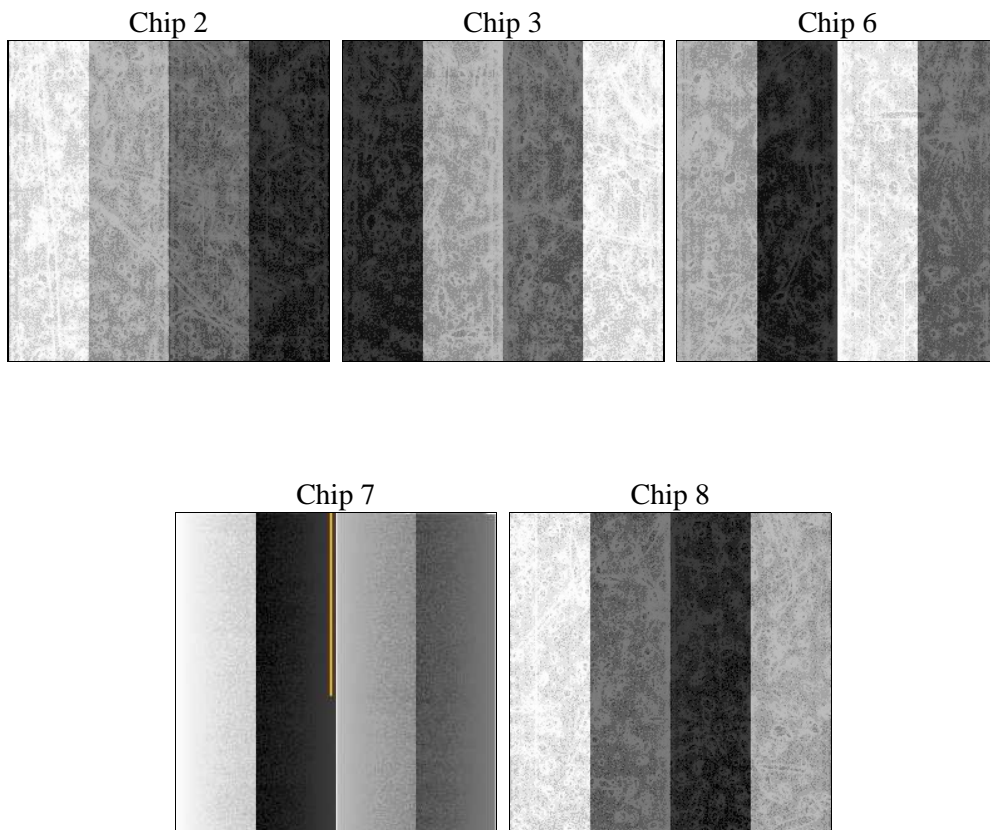
2 OBI

2.1 OBI

2.1.1 Images



2.1.2 Bias



2.1.3 Parameters

obi_num	1	Obi number	sched_exp_time	10000.000000	[s] Scheduled observation exposure time
ascdsver	8.4.5	Processing system revision	ontime	10102.579197049	Sum of GTIs [s]
caldbver	4.5.2	 	ontime2	10102.415066928	Sum of GTIs [s]
date	2012-11-01T10:36:20	Date and time of file creation	ontime3	10093.074196398	Sum of GTIs [s]
revision	4	Processing version of data	ontime6	10099.397216737	Sum of GTIs [s]
			ontime7	10102.579197049	Sum of GTIs [s]
			ontime8	10102.456077039	Sum of GTIs [s]
			l1events	284385	Number of level 1 events

2.1.4 Events

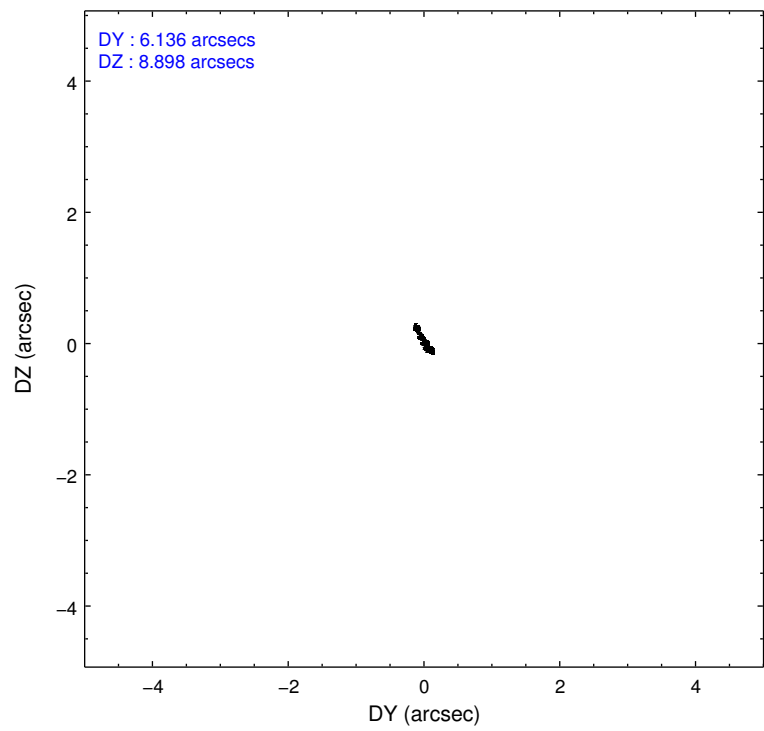
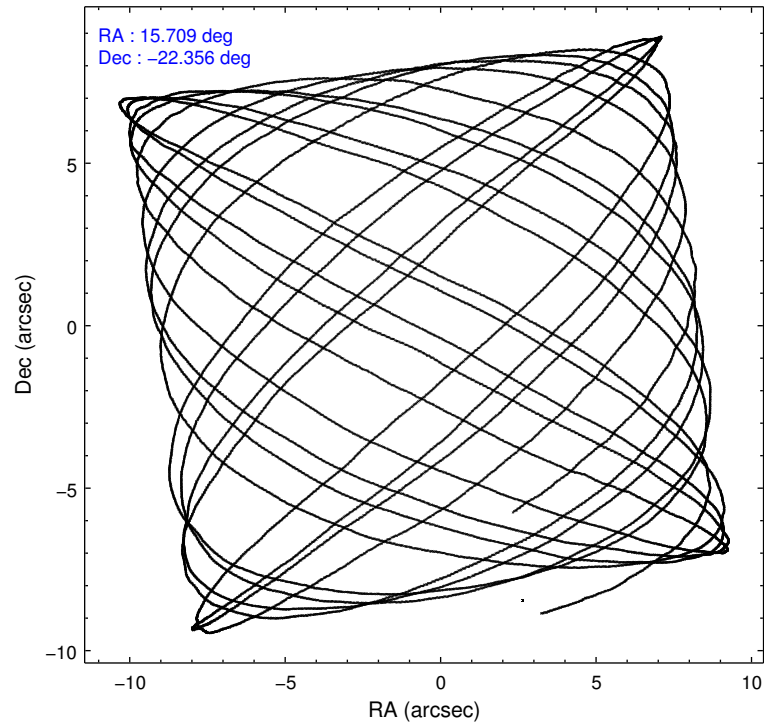
	ccd 2	ccd 3	ccd 6	ccd 7	ccd 8
level 1 events	53928	51940	53843	58400	66274
rejected events	48748	46866	48106	31924	51464
rejected %	90%	90%	89%	54%	77%

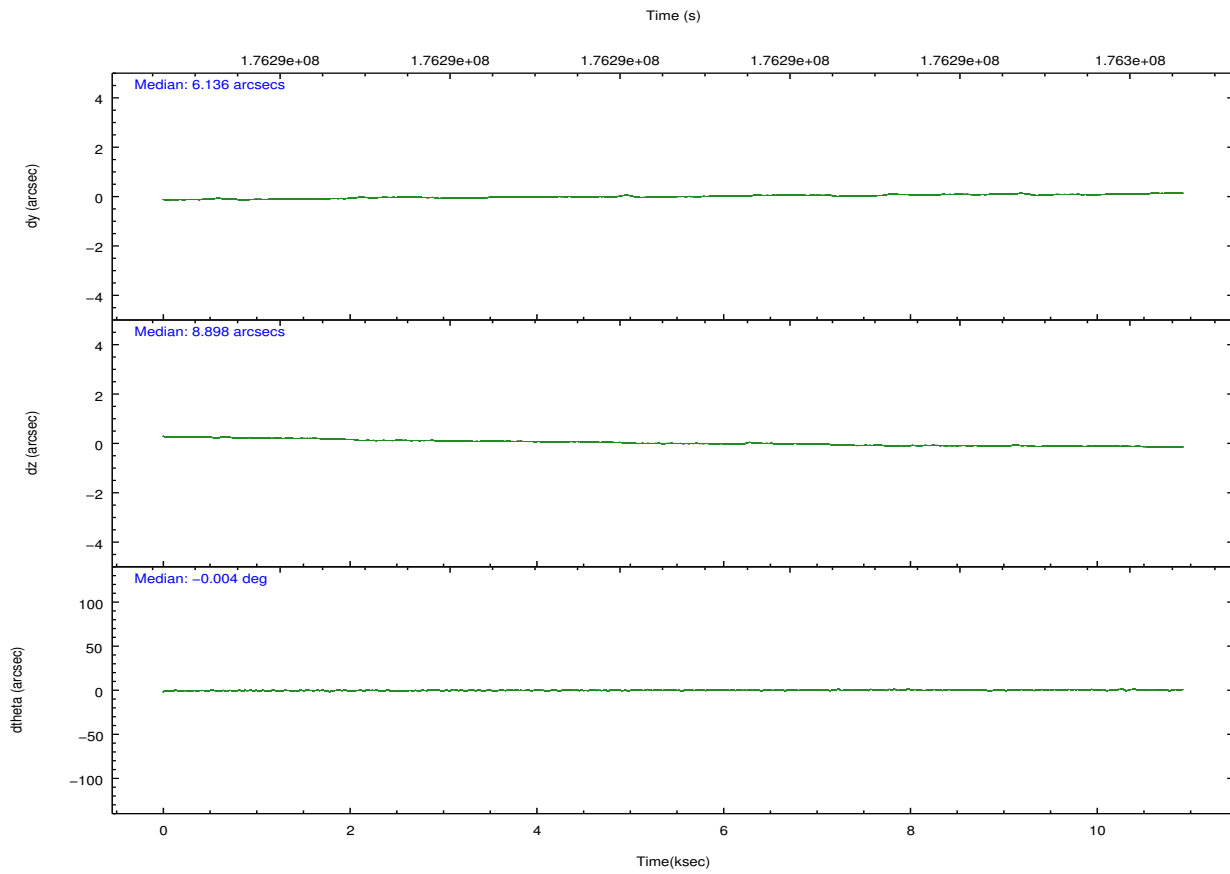
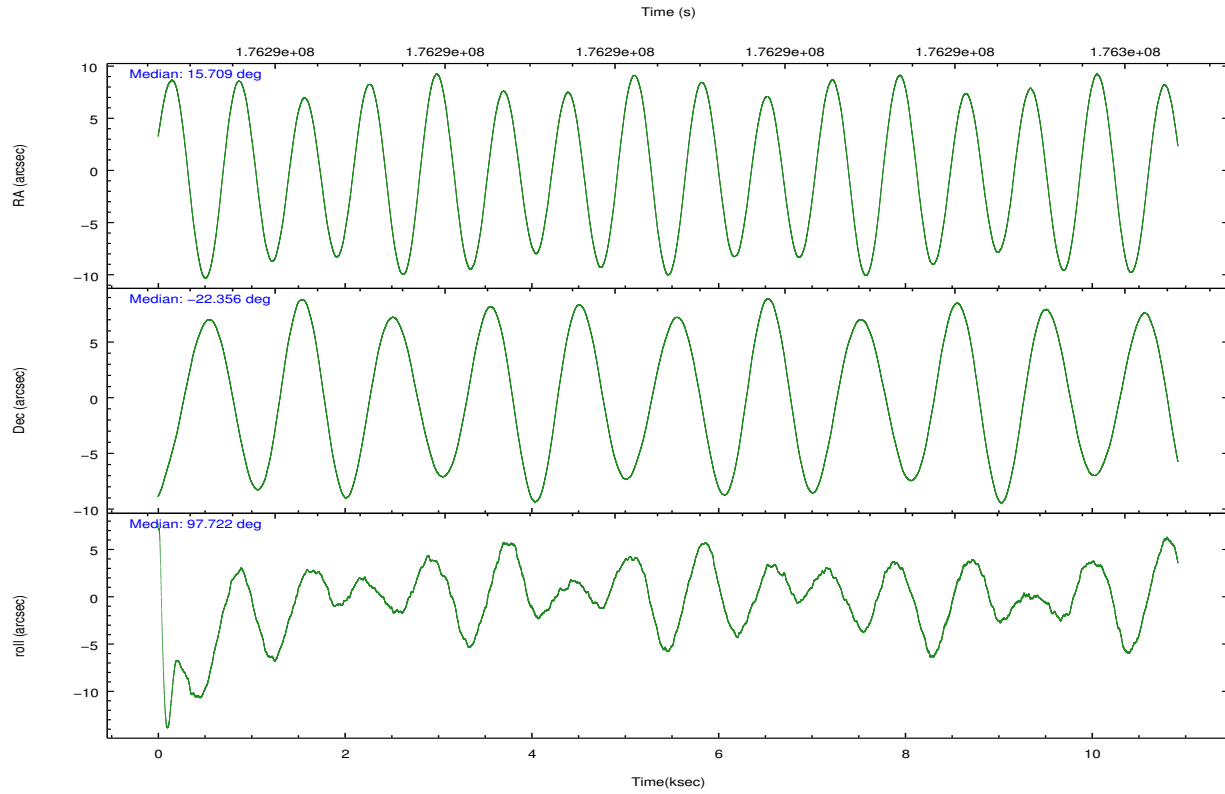
	ccd 2	ccd 3	ccd 6	ccd 7	ccd 8
grade 0 events	1925	1897	2083	2509	4357
	3%	3%	3%	4%	6%
grade 1 events	16	27	24	46	46
	0%	0%	0%	0%	0%
grade 2 events	1204	1017	1216	5280	3417
	2%	1%	2%	9%	5%
grade 3 events	597	588	664	2566	1516
	1%	1%	1%	4%	2%
grade 4 events	587	587	606	2574	1413
	1%	1%	1%	4%	2%
grade 5 events	1740	2034	2062	6266	2898
	3%	3%	3%	10%	4%
grade 6 events	872	987	1170	13565	4110
	1%	1%	2%	23%	6%
grade 7 events	46987	44803	46018	25594	48517
	87%	86%	85%	43%	73%

2.2 Compared Parameters

Parameter	Planned	Actual	Parameter	Planned	Actual
Instrument	ACIS	ACIS	Obspar format version number	7	7
Detector	ACIS-23678	ACIS-23678	Obspar file type	PREDICTED	ACTUAL
Grating	NONE	NONE	Obspar update status	NONE	UPDATED
Data mode	VFAINT	VFAINT	Number of optional ACIS chips dropped	0	0
Observation mode	POINTING	POINTING	On-chip summing requested	N	N
[deg] Pointing RA	15.726680	15.70837755379843	Subarray requested	NONE	NONE
[deg] Pointing Dec	-22.377477	-22.35614341574361	Alternating exposures requested	N	N
[deg] Pointing Roll	97.581143	97.73080406886956	[s] Primary exposure time	0.000000	3.1
[mm] SIM focus pos	-0.684267	-0.6828225247311905			
[mm] SIM defocus	0	0.001444936568705701			
[mm] SIM translation stage pos	-190.132523	-190.1425803651734			
[mm] SIM translation stage offset	0	0.01005778216563158			
[s] Observation start time (MET)	176286085.184000	176284758.17459			
Observation start date	2003-08-03T08:20:21	2003-08-03T07:59:18			
[s] Observation end time (MET)	176296085.184000	176296771.1751			
Observation end date	2003-08-03T11:07:01	2003-08-03T11:19:31			
Read mode	TIMED	TIMED			

2.3 Aspect



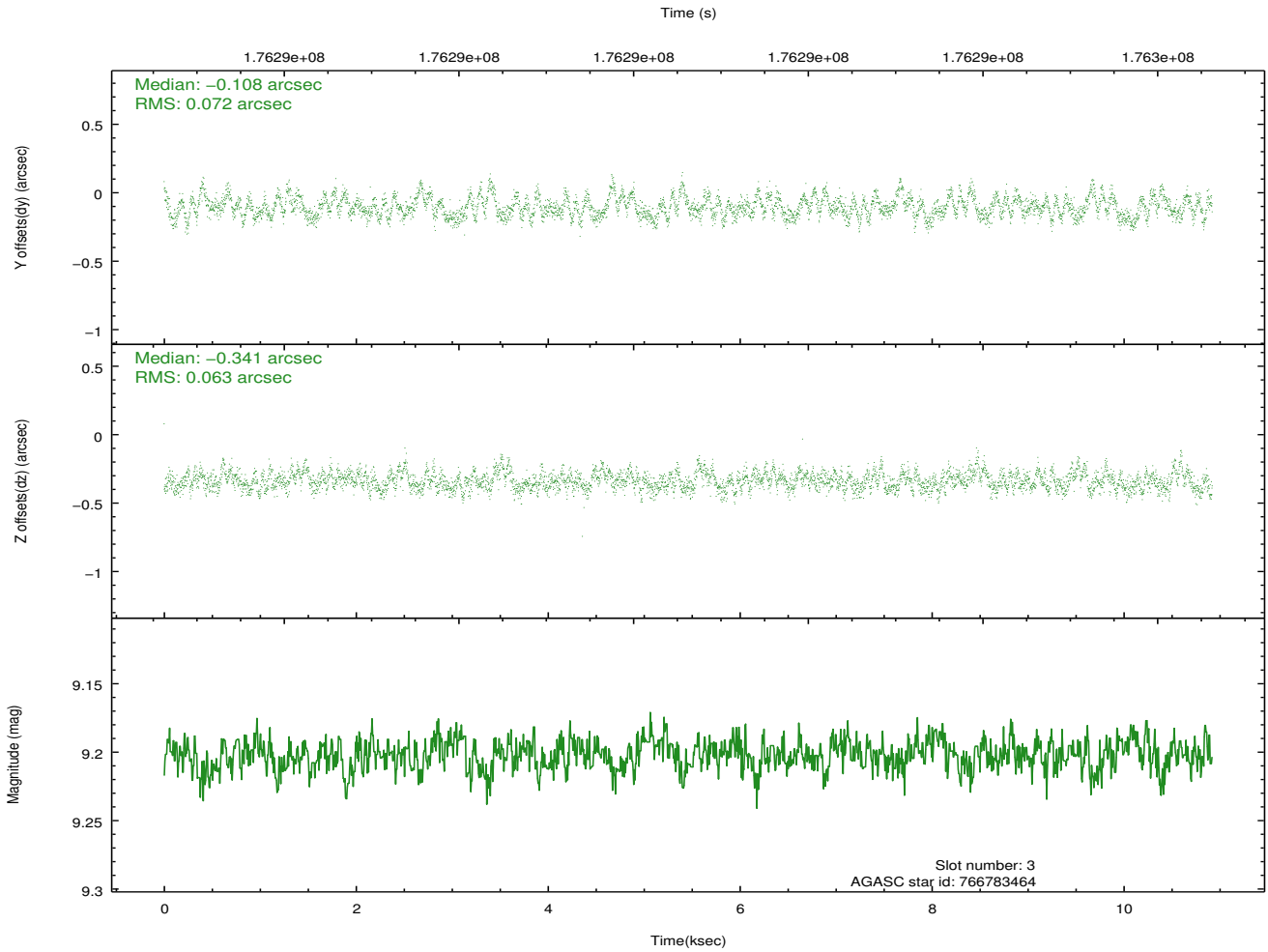
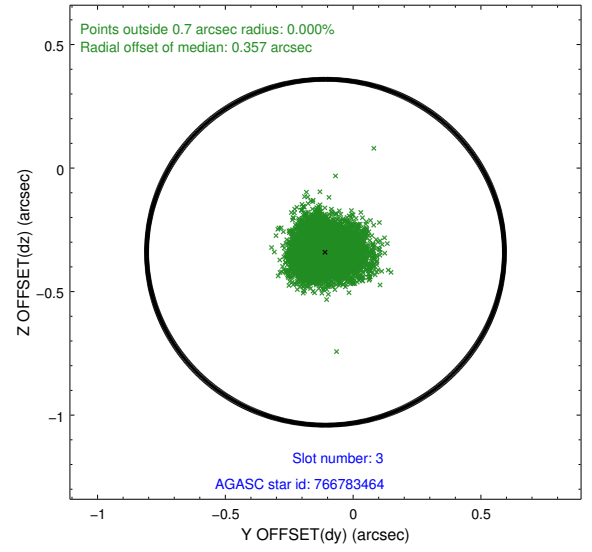
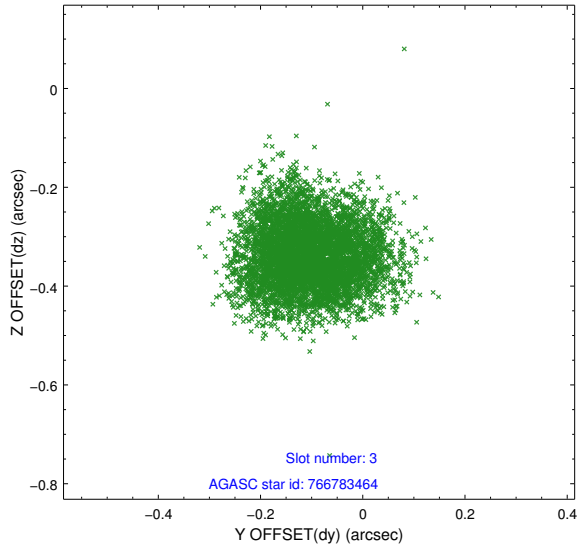


Slot Statistics

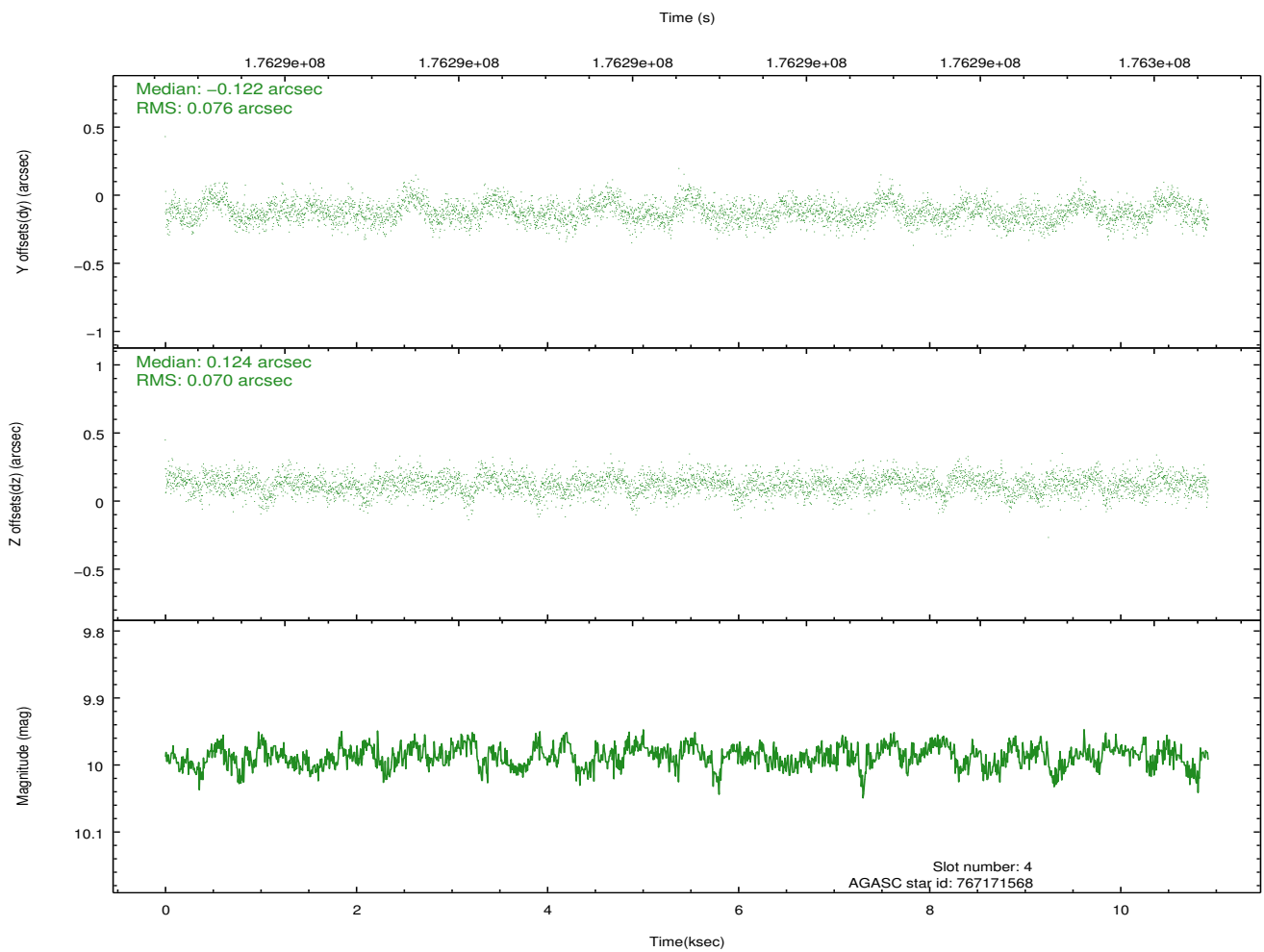
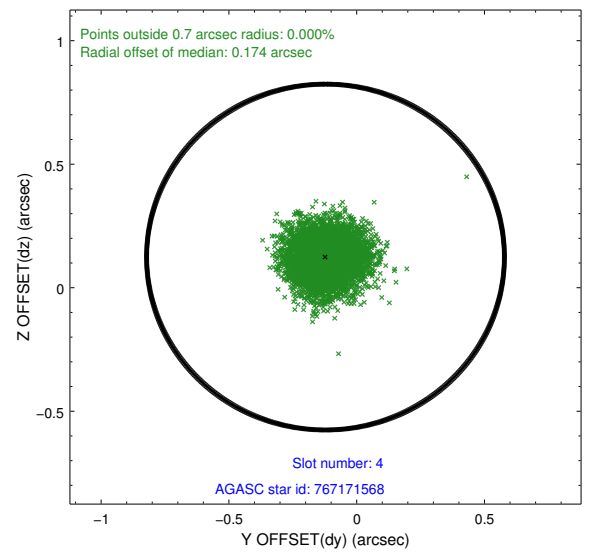
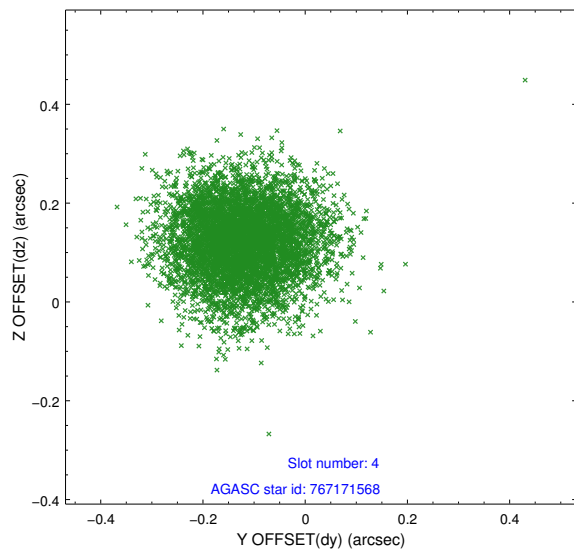
slot	status	id	mag	n_pts	med_dy	med_dz	dr1	dr2	ra	dec	mean_y	mean_z
0	FID	ACIS-S-2	7.10	2662	-0.039	-0.035	0.007	0.011	0.000000	0.000000	-758.92	-1730.12
1	FID	ACIS-S-4	7.20	2662	0.055	0.028	0.006	0.011	0.000000	0.000000	2154.25	177.92
2	FID	ACIS-S-5	7.23	2662	-0.047	0.015	0.007	0.012	0.000000	0.000000	-1811.15	172.14
3	GUIDE	766783464	9.20	5322	-0.108	-0.341	0.103	0.162	15.041422	-22.197983	936.52	2179.81
4	GUIDE	767171568	9.99	5317	-0.122	0.124	0.110	0.179	16.035890	-22.108834	821.99	-1148.66
5	GUIDE	767171936	10.16	5302	0.113	0.100	0.150	0.257	16.105335	-22.483256	-544.66	-1197.82
6	GUIDE	841745408	8.64	5321	-0.003	0.067	0.079	0.126	16.162435	-22.504118	-644.91	-1375.99
7	GUIDE	767171896	10.39	5312	0.123	0.048	0.146	0.234	16.079513	-22.498908	-589.15	-1105.35

2.4 Star Slots

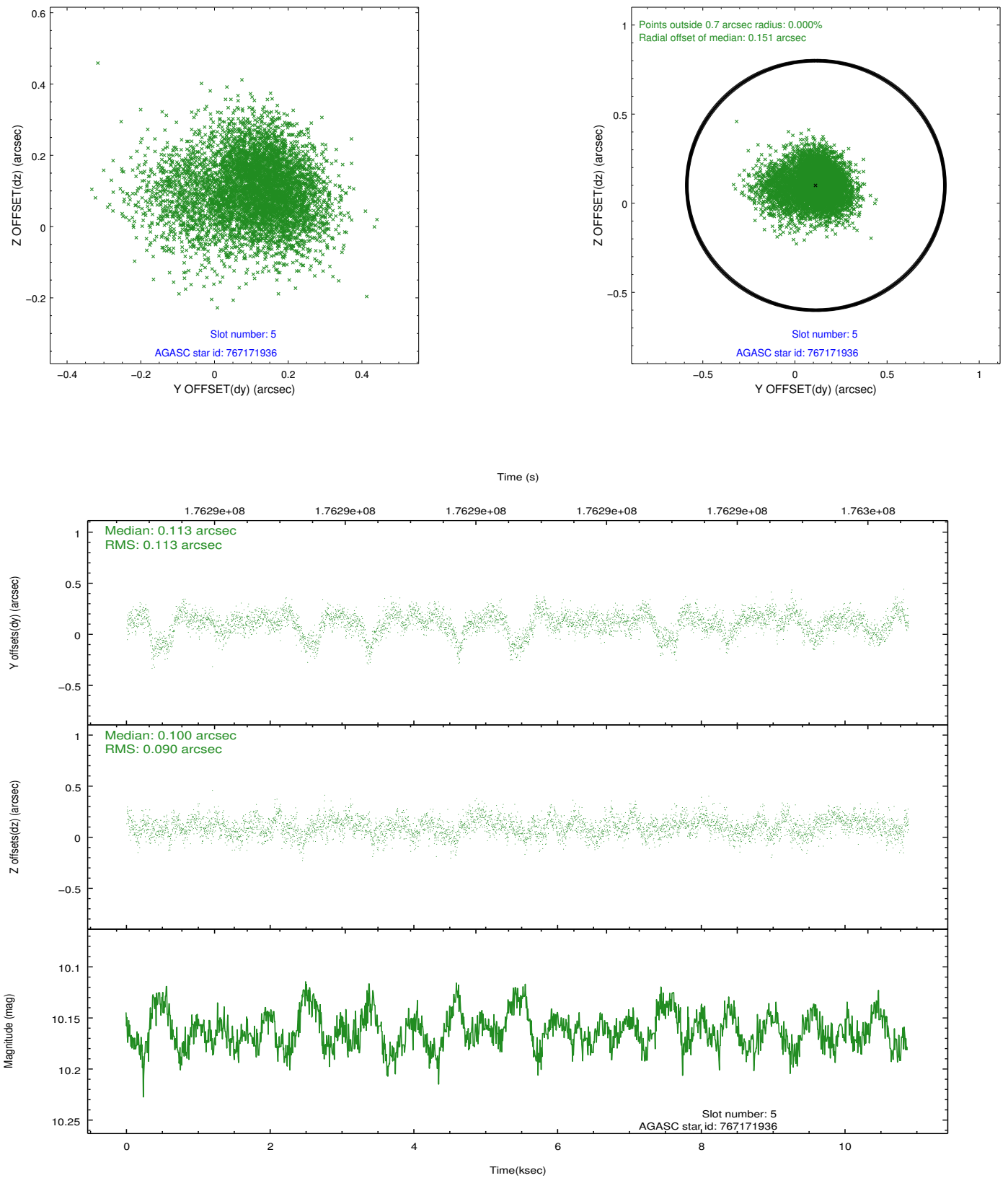
2.4.1 Slot 3



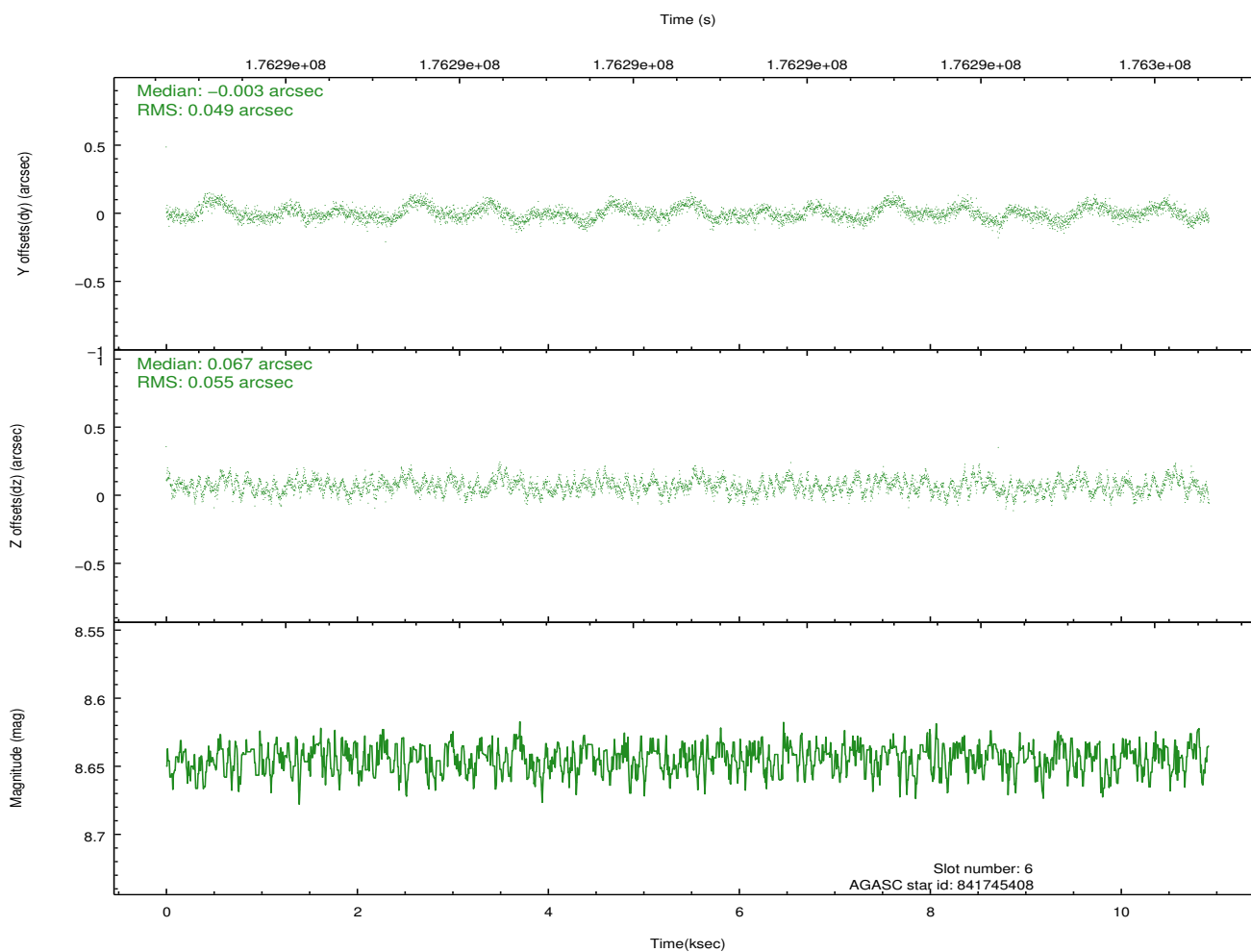
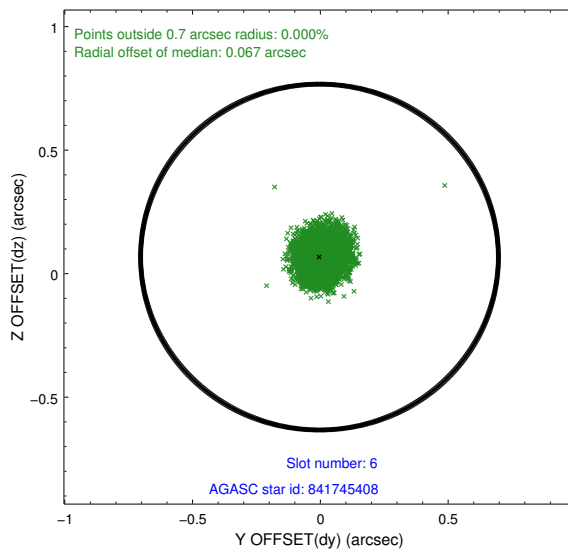
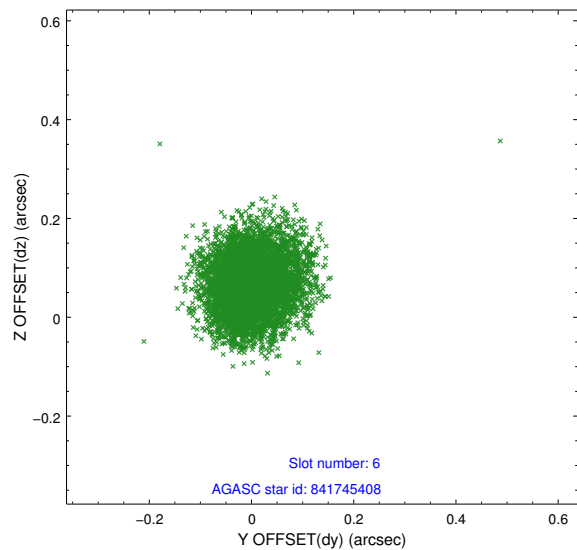
2.4.2 Slot 4



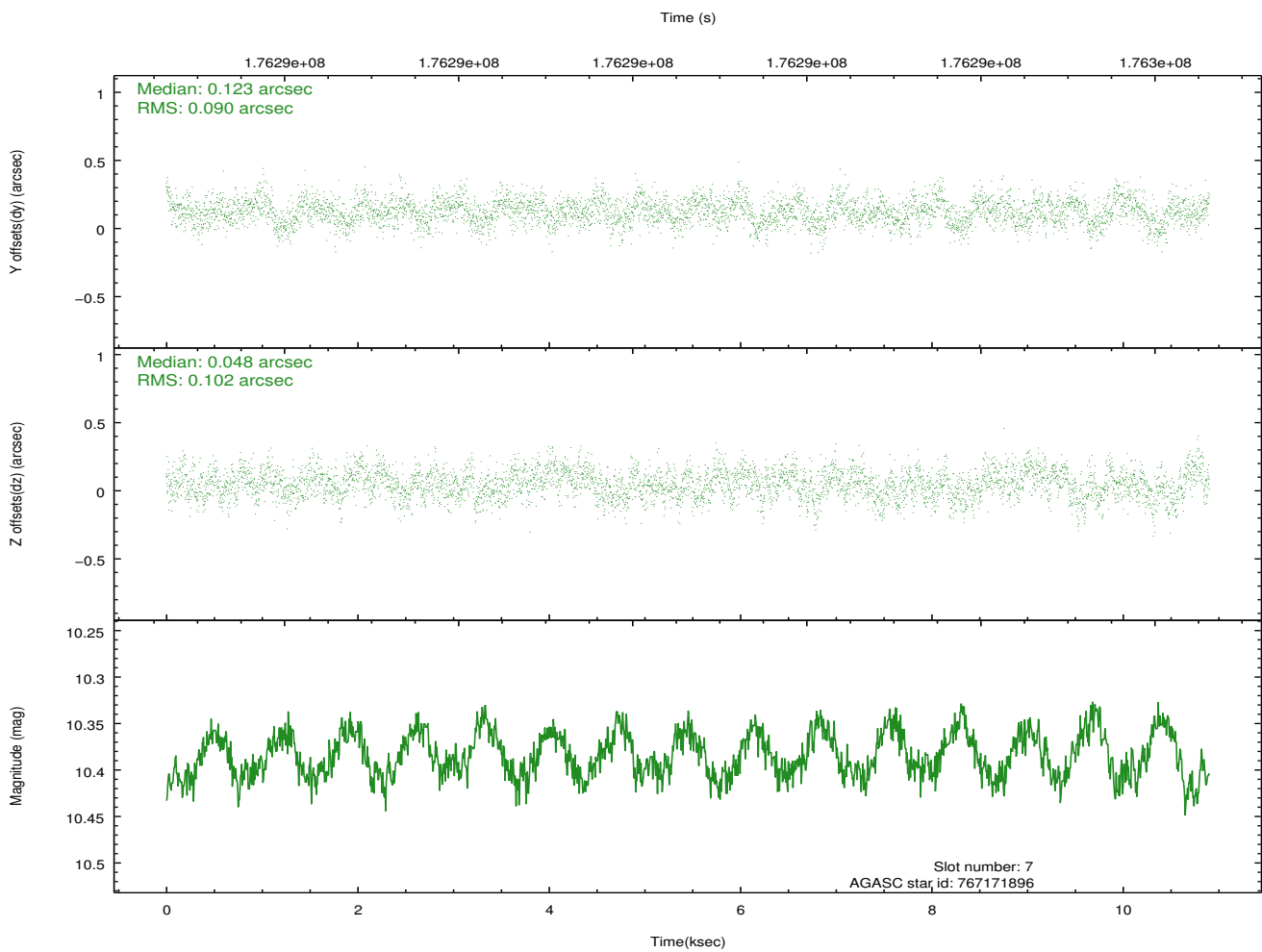
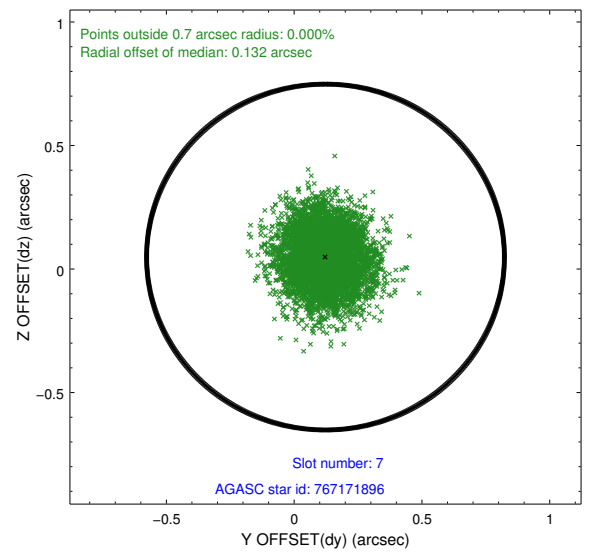
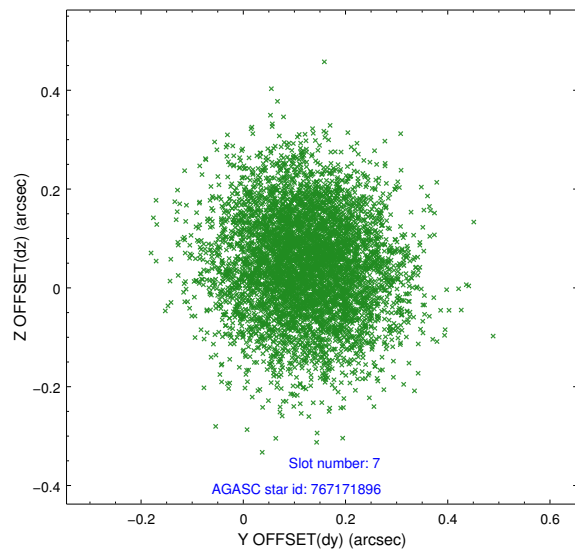
2.4.3 Slot 5



2.4.4 Slot 6

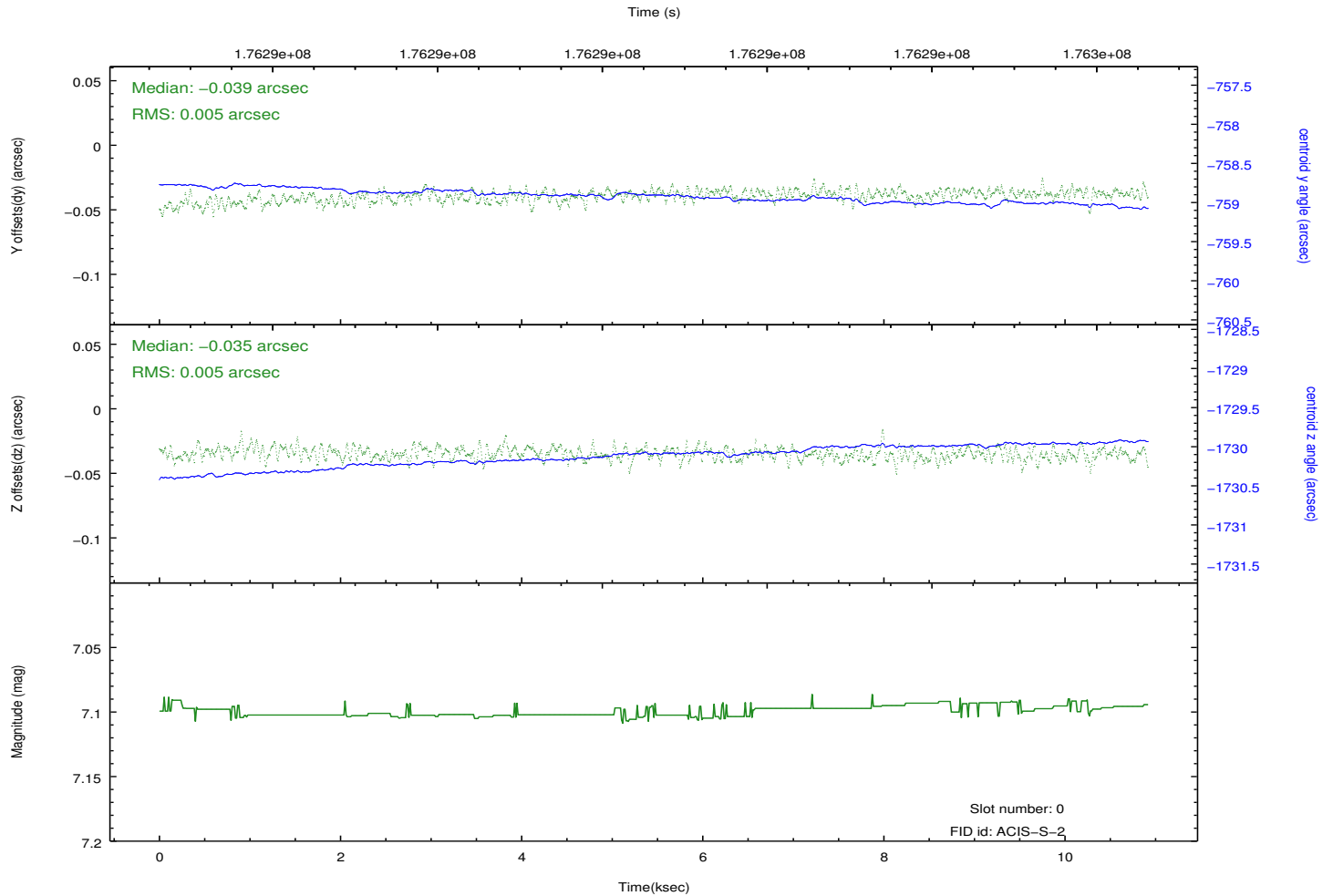
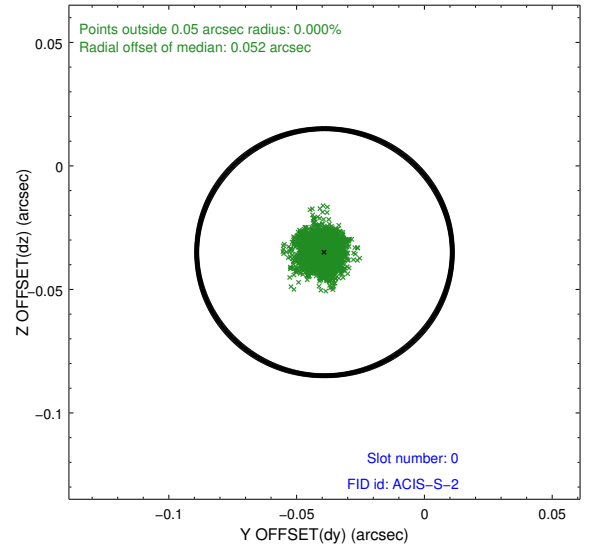
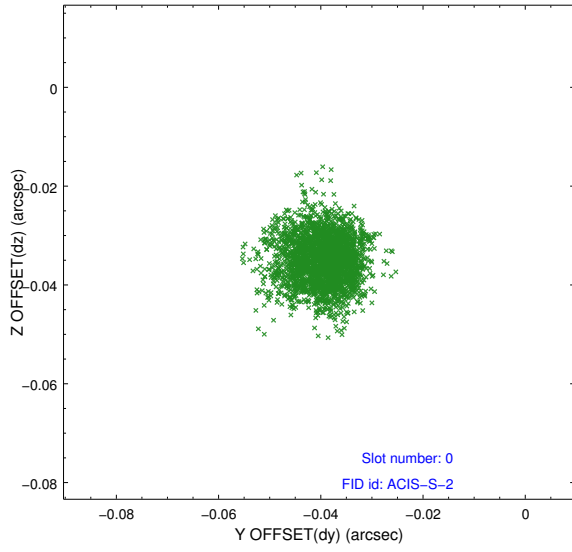


2.4.5 Slot 7

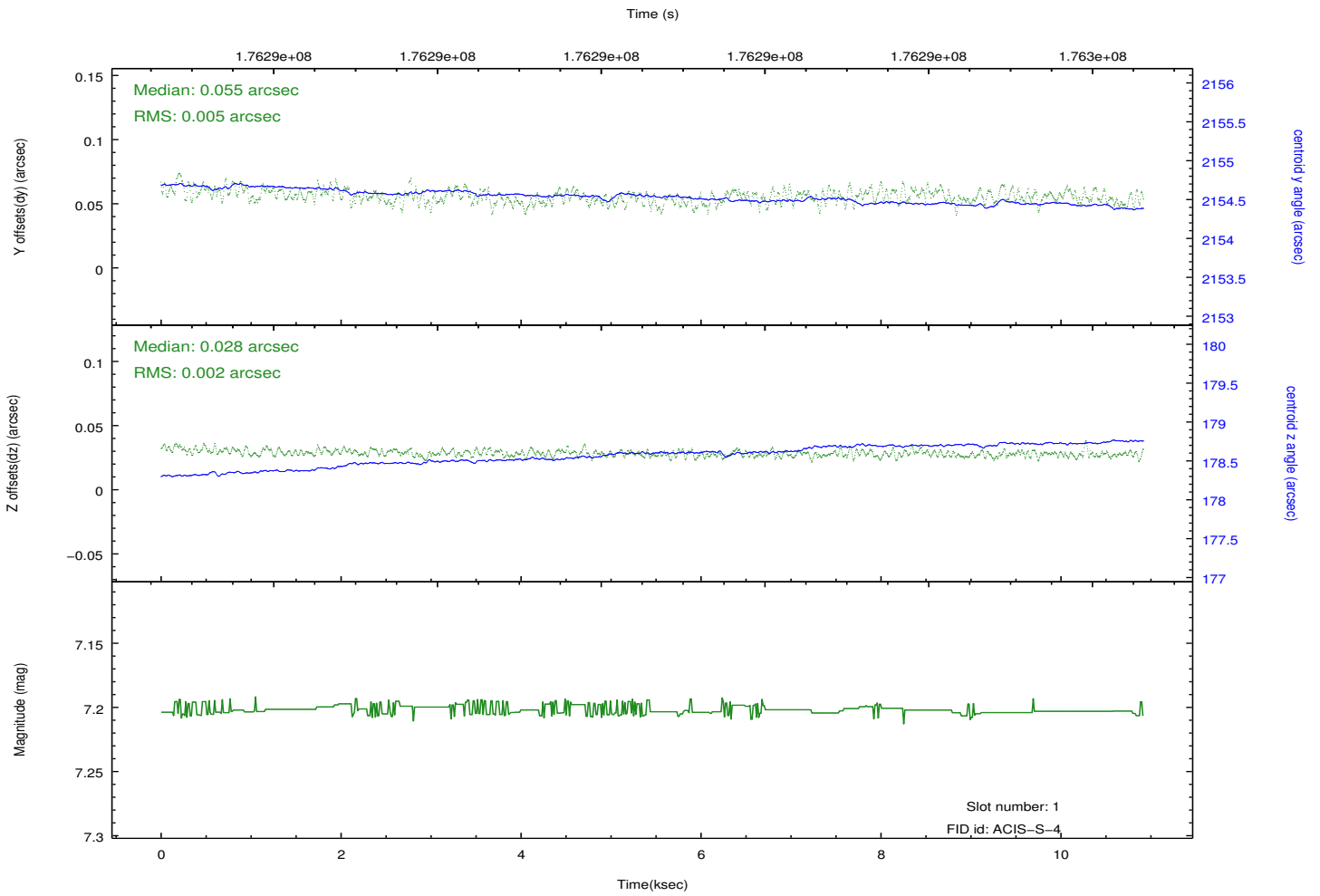
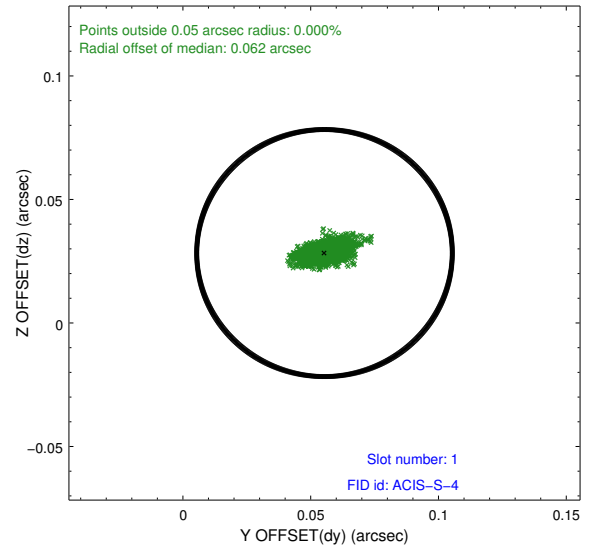
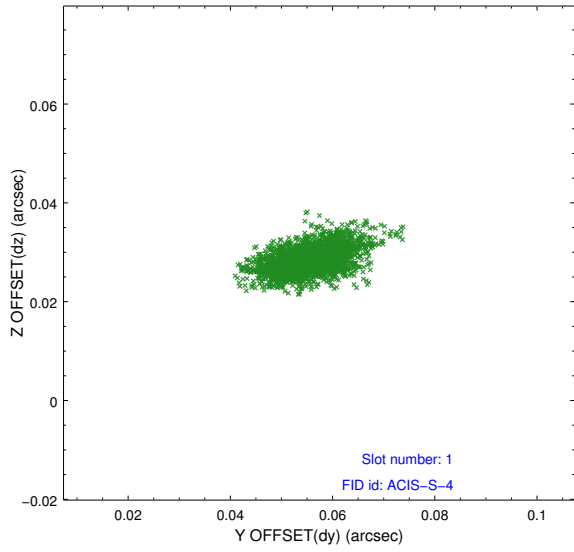


2.5 FID Slots

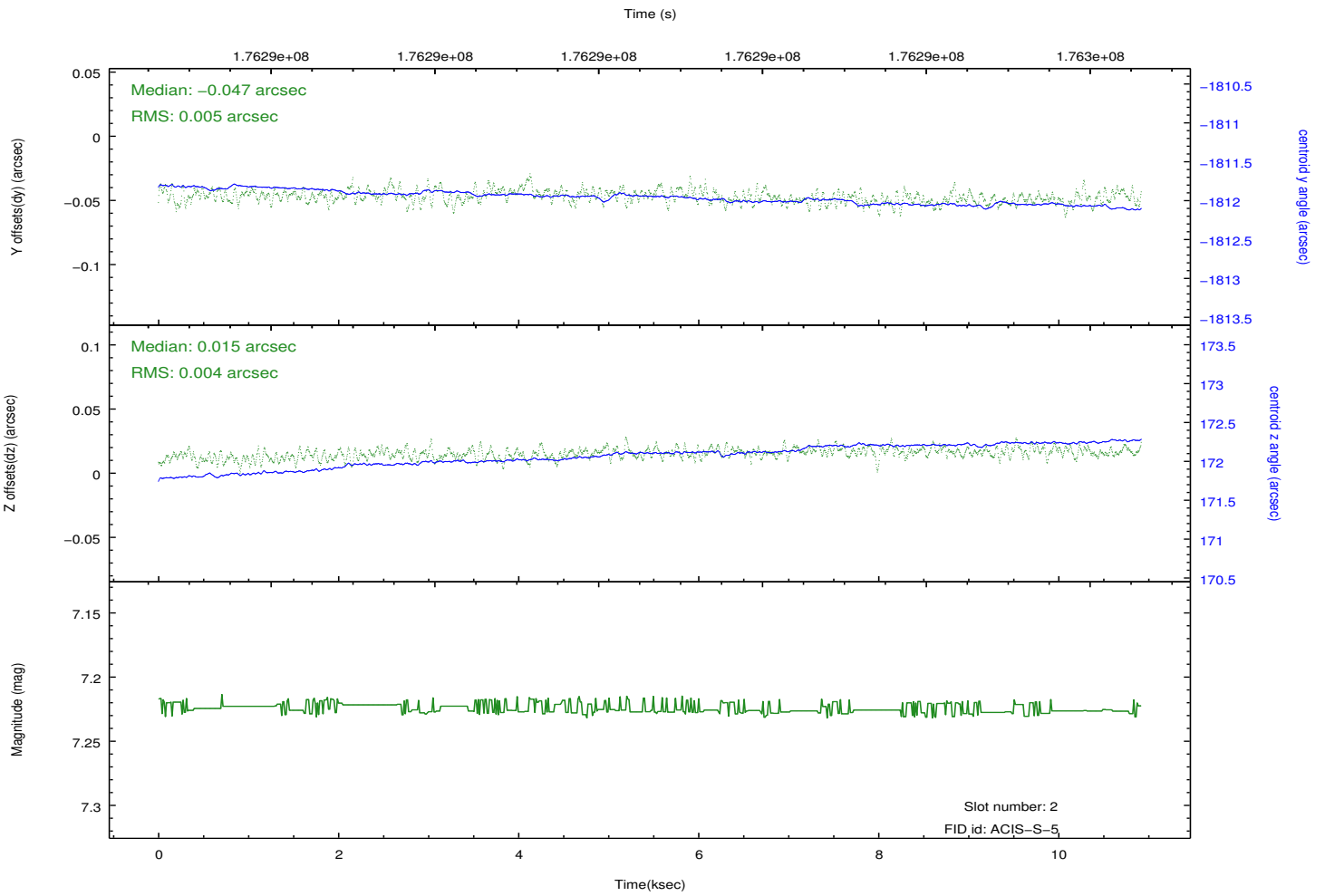
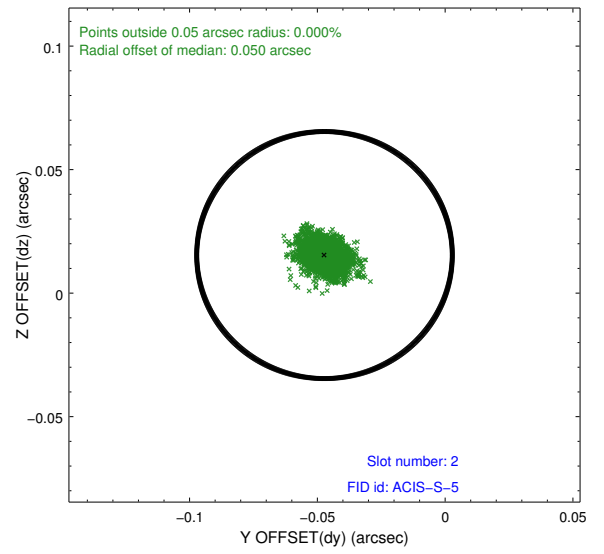
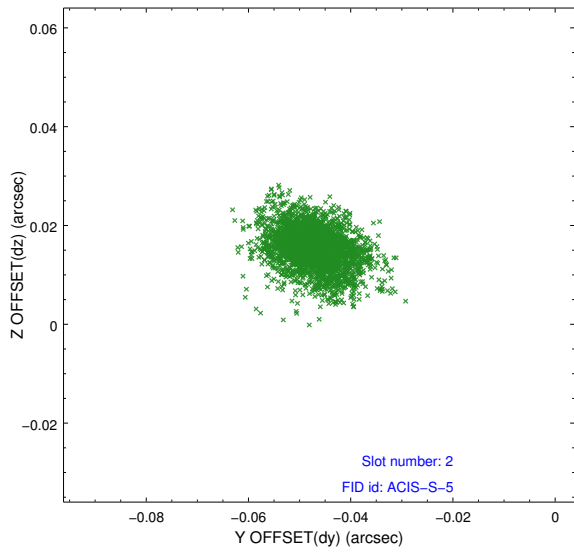
2.5.1 Slot 0



2.5.2 Slot 1



2.5.3 Slot 2



A Summary

A.1 Status

V&V Scientist	Jen Lauer
V&V Date (YYYY-MM-DD)	2012.11.27
V&V Edition	1
V&V Disposition and Status	OK
V&V Charge Time	10.1

A.2 Comments