

# V&V Reference Report

## L2 ASCDS Version : 8.4.5

Observation 4173 - L2 Version 3  
Chandra X-Ray Center

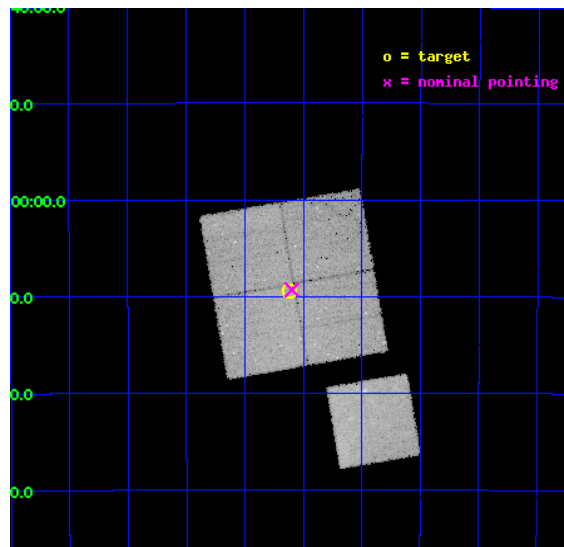
L2 Processing Date : Oct 28 2012

## Contents

<b>1</b>	<b>Front</b>	<b>2</b>
<b>2</b>	<b>OBI</b>	<b>3</b>
2.1	OBI . . . . .	3
2.1.1	Images . . . . .	3
2.1.2	Bias . . . . .	3
2.1.3	Parameters . . . . .	4
2.1.4	Events . . . . .	4
2.2	Compared Parameters . . . . .	5
2.3	Aspect . . . . .	6
2.4	Star Slots . . . . .	9
2.4.1	Slot 3 . . . . .	9
2.4.2	Slot 4 . . . . .	10
2.4.3	Slot 5 . . . . .	11
2.4.4	Slot 6 . . . . .	12
2.4.5	Slot 7 . . . . .	13
2.5	FID Slots . . . . .	14
2.5.1	Slot 0 . . . . .	14
2.5.2	Slot 1 . . . . .	15
2.5.3	Slot 2 . . . . .	16
<b>A</b>	<b>Summary</b>	<b>17</b>
A.1	Status . . . . .	17
A.2	Comments . . . . .	17

# 1 Front

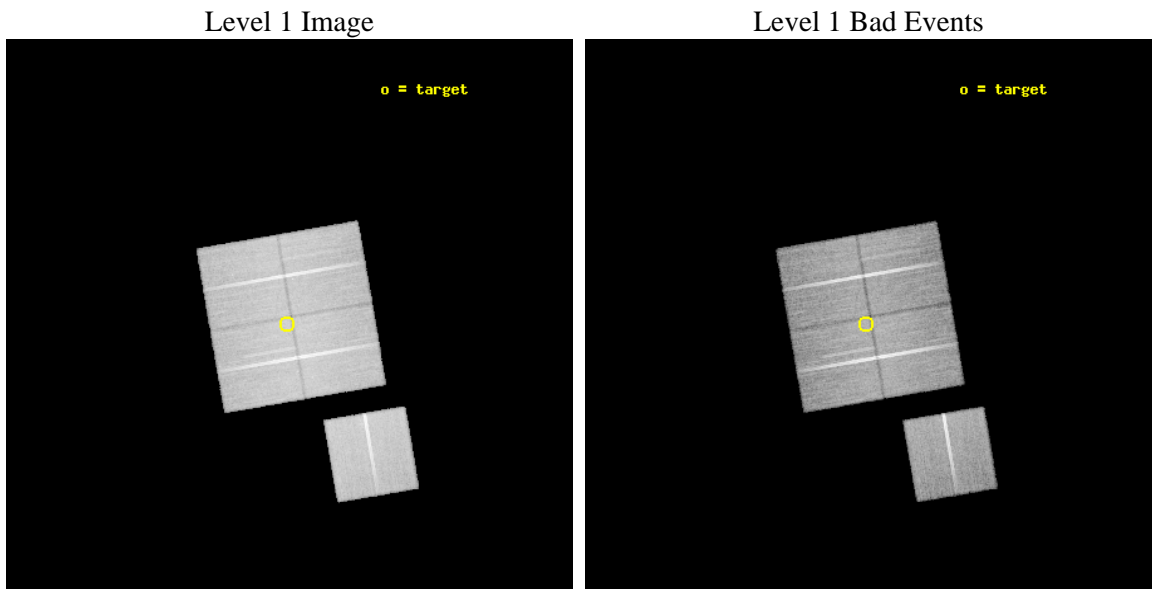
seq_num	800329	Sequence number
obs_id	4173	Observation id
title	SURVEYING THE FORNAX CLUSTER OF GALAXIES	Proposal title
observer	Dr Caleb Scharf	Principal investigator
object	FORNAX CLUSTER	Source name
dtcycle	0	&#160
cycle	P	events from which exps? Prim/Second/Both
ra_targ	54.6542	Observer's specified target RA [deg]
dec_targ	-35.1577	Observer's specified target Dec [deg]
ra_nom	54.649439995567	Nominal RA [deg]
dec_nom	-35.155187124395	Nominal Dec [deg]
roll_nom	170.20594264749	Nominal Roll [deg]
revision	3	Processing version of data
ontime	45692.920104921	Sum of GTIs [s]
livetime	45095.908465112	Livetime [s]
ontime0	45683.374064296	Sum of GTIs [s]
ontime1	45695.97908479	Sum of GTIs [s]
ontime2	45683.456104457	Sum of GTIs [s]
ontime3	45692.920104921	Sum of GTIs [s]
ontime6	45692.755984694	Sum of GTIs [s]
l2events	159043	Number of level 2 events



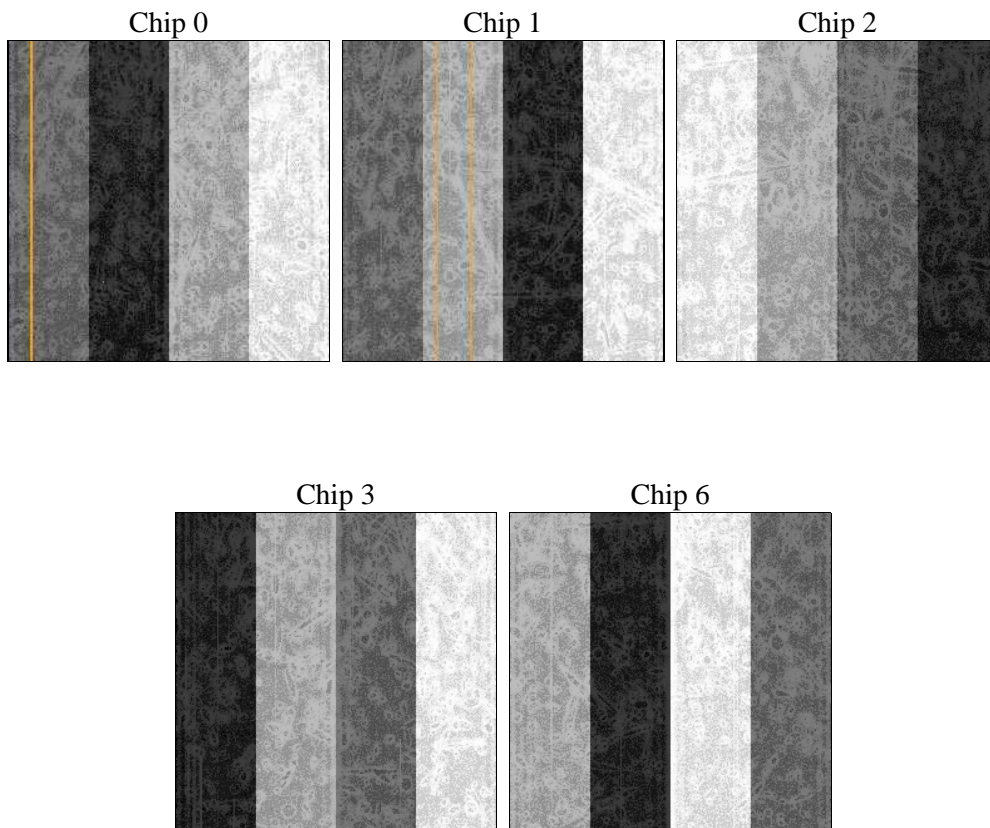
## 2 OBI

### 2.1 OBI

#### 2.1.1 Images



#### 2.1.2 Bias



### 2.1.3 Parameters

obi_num	0	Obi number	sched_exp_time	45927.670000	[s] Scheduled observation exposure time
ascdsver	8.4.5	Processing system revision	ontime	45692.920104921	Sum of GTIs [s]
caldbver	4.5.2	&#160	ontime0	45683.374064296	Sum of GTIs [s]
date	2012-10-28T14:21:23	Date and time of file creation	ontime1	45695.97908479	Sum of GTIs [s]
revision	3	Processing version of data	ontime2	45683.456104457	Sum of GTIs [s]
			ontime3	45692.920104921	Sum of GTIs [s]
			ontime6	45692.755984694	Sum of GTIs [s]
			l1events	1262603	Number of level 1 events

### 2.1.4 Events

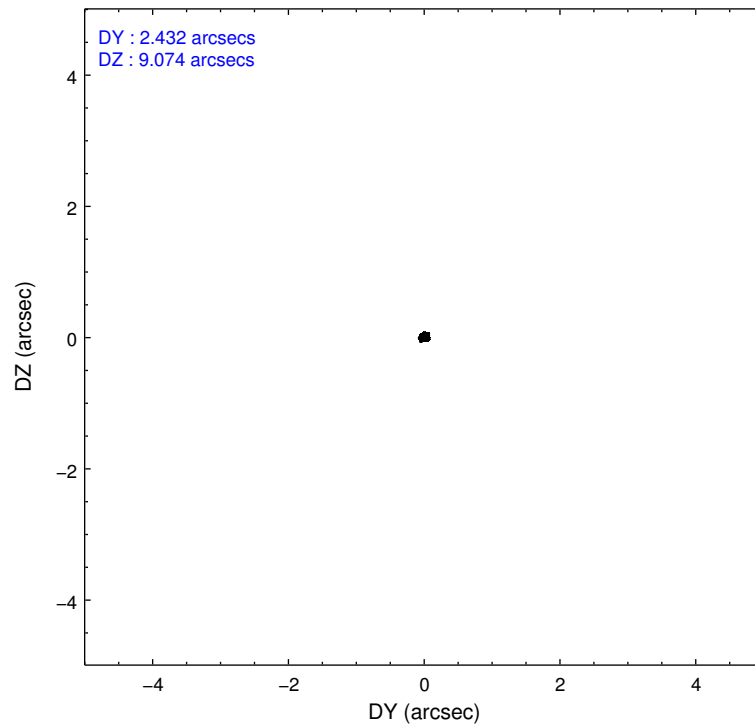
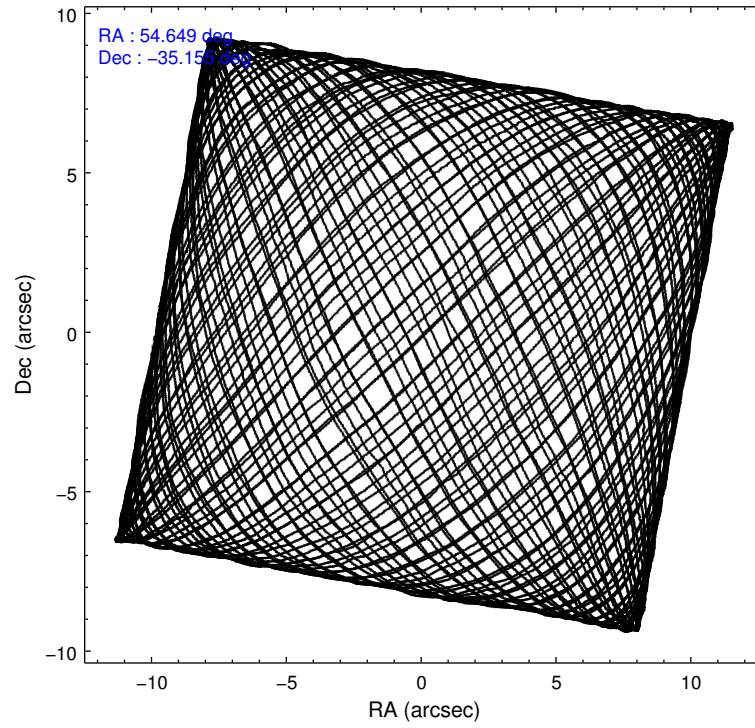
	ccd 0	ccd 1	ccd 2	ccd 3	ccd 6
level 1 events	236679	241144	264040	258784	261956
rejected events	206359	205944	227313	221817	218090
rejected %	87%	85%	86%	85%	83%

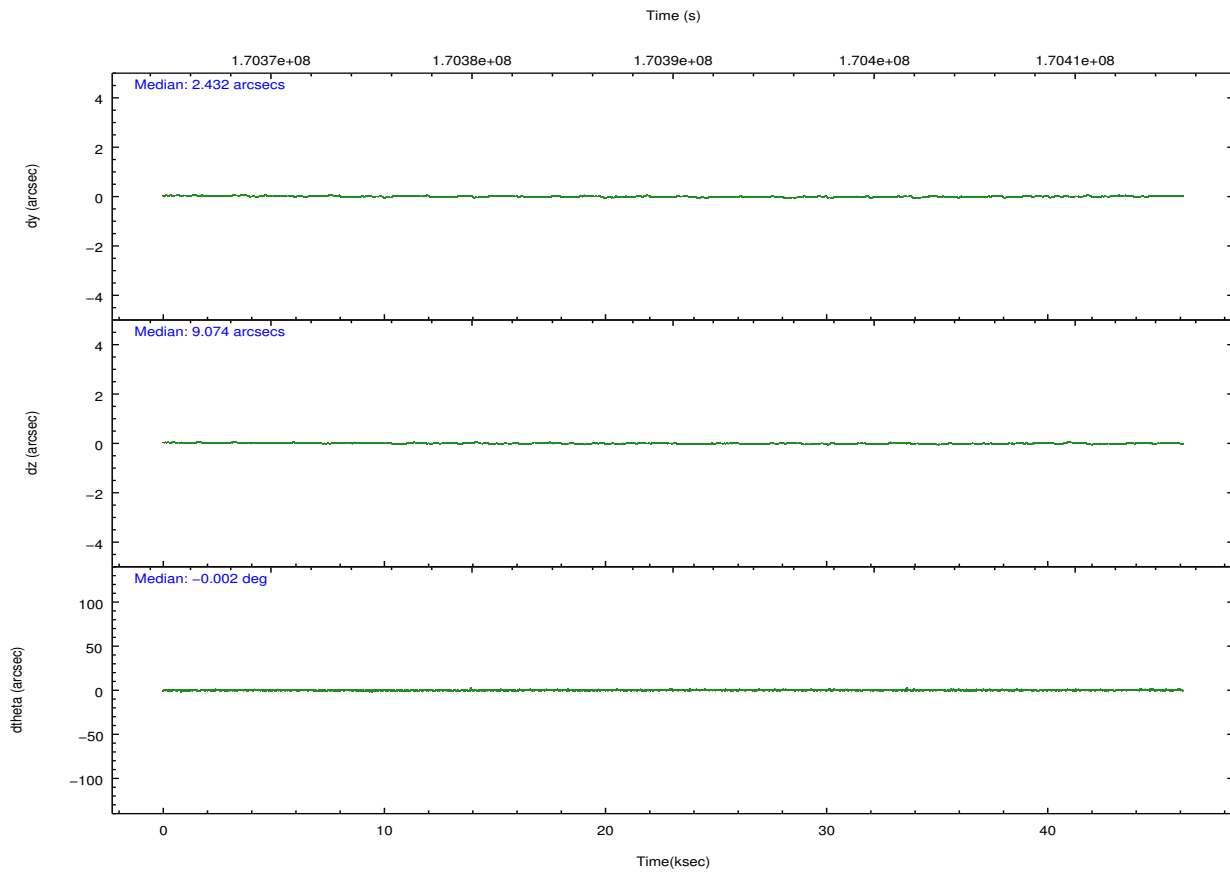
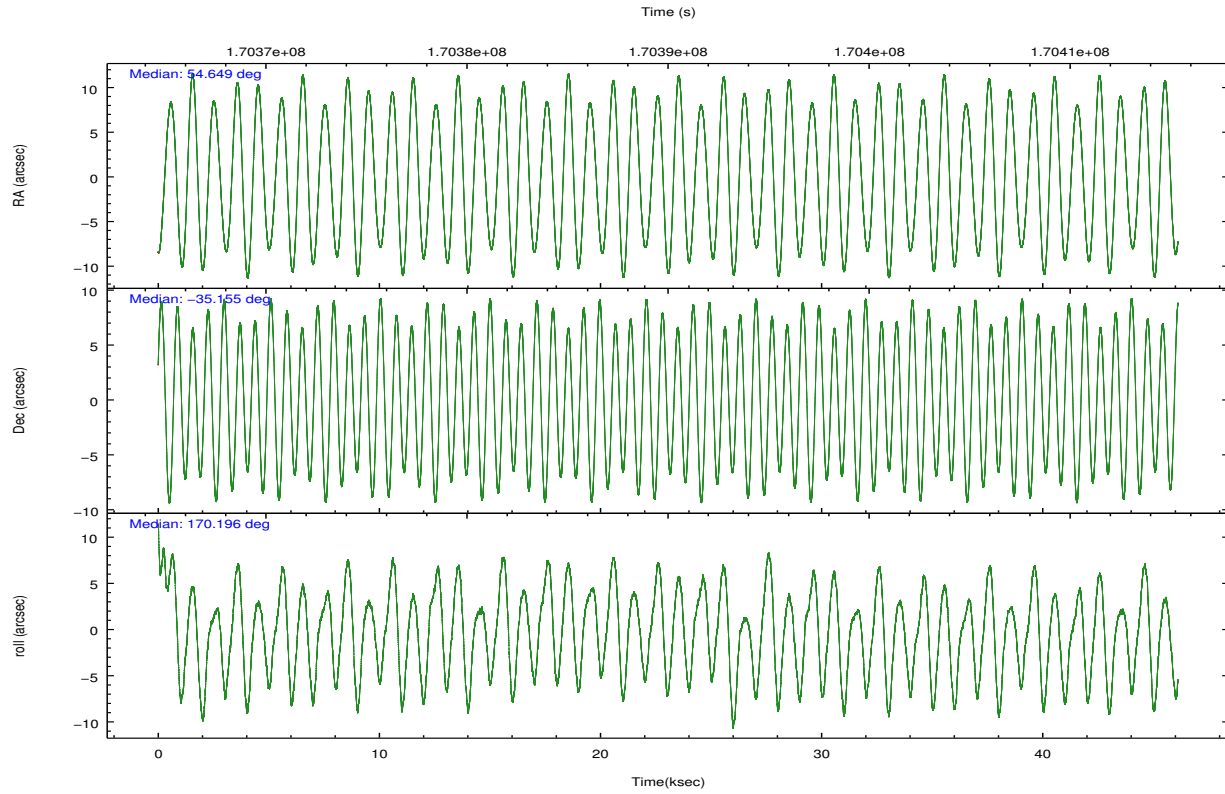
	ccd 0	ccd 1	ccd 2	ccd 3	ccd 6
grade 0 events	13714	16812	19840	20214	25116
	5%	6%	7%	7%	9%
grade 1 events	129	149	180	184	145
	0%	0%	0%	0%	0%
grade 2 events	6124	6464	6513	6102	6868
	2%	2%	2%	2%	2%
grade 3 events	3051	3199	2949	2958	3254
	1%	1%	1%	1%	1%
grade 4 events	2819	3264	2935	3084	3170
	1%	1%	1%	1%	1%
grade 5 events	8526	8922	7886	9398	9310
	3%	3%	2%	3%	3%
grade 6 events	4615	5469	4498	4615	5472
	1%	2%	1%	1%	2%
grade 7 events	197701	196865	219239	212229	208621
	83%	81%	83%	82%	79%

## 2.2 Compared Parameters

Parameter	Planned	Actual	Parameter	Planned	Actual
Instrument	ACIS	ACIS	Obspar format version number	7	7
Detector	ACIS-01236	ACIS-01236	Obspar file type	PREDICTED	ACTUAL
Grating	NONE	NONE	Obspar update status	NONE	UPDATED
Data mode	VFAINT	VFAINT	Number of optional ACIS chips dropped	0	0
Observation mode	POINTING	POINTING	On-chip summing requested	N	N
[deg] Pointing RA	54.680810	54.64943999556696	Subarray requested	NONE	NONE
[deg] Pointing Dec	-35.145620	-35.15518712439536	Alternating exposures requested	N	N
[deg] Pointing Roll	170.015318	170.2059426474926	[s] Primary exposure time	0.000000	3.1
[mm] SIM focus pos	-0.782348	-0.7809083437167272			
[mm] SIM defocus	0	0.001439871863259334			
[mm] SIM translation stage pos	-233.592463	-233.5874344608287			
[mm] SIM translation stage offset	0	-0.005018542100998502			
[s] Observation start time (MET)	170367129.184000	170366753.86035			
Observation start date	2003-05-26T20:11:05	2003-05-26T20:05:53			
[s] Observation end time (MET)	170413057.184000	170413371.88733			
Observation end date	2003-05-27T08:56:33	2003-05-27T09:02:51			
Read mode	TIMED	TIMED			

## 2.3 Aspect



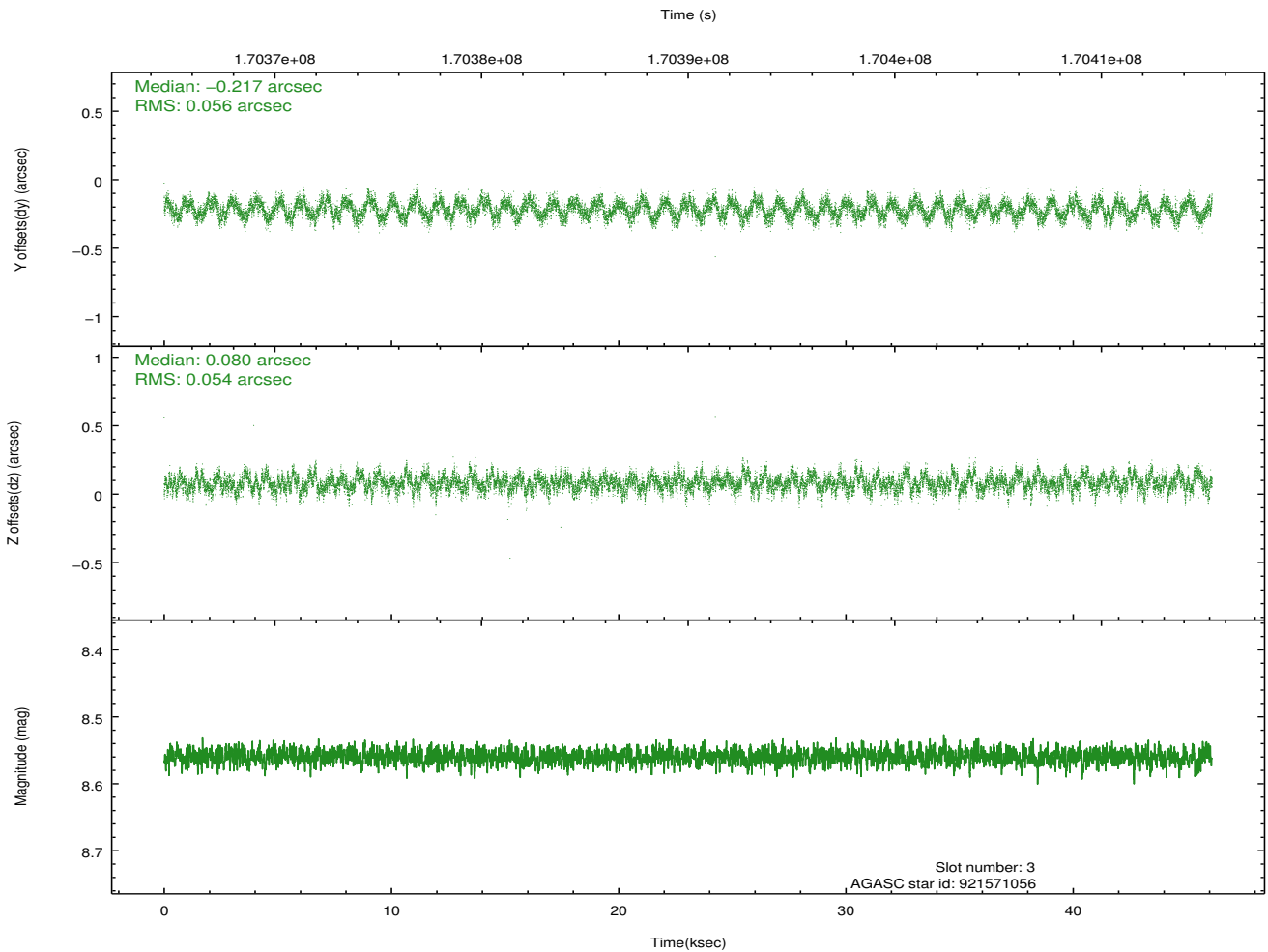
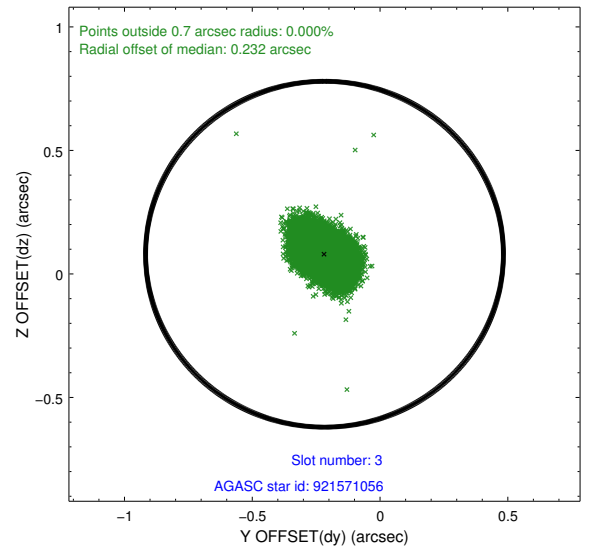
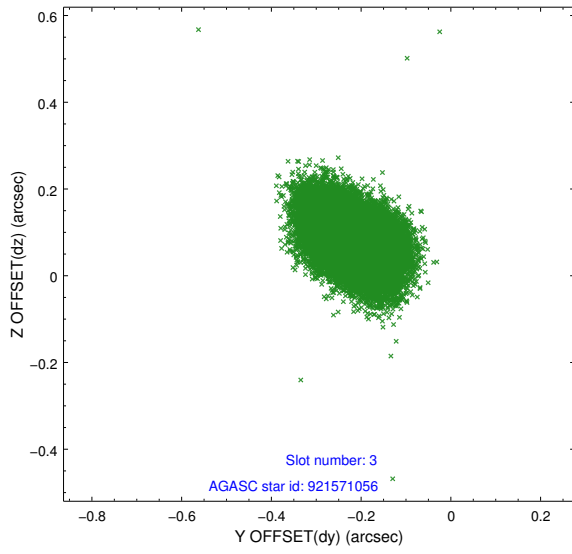


### Slot Statistics

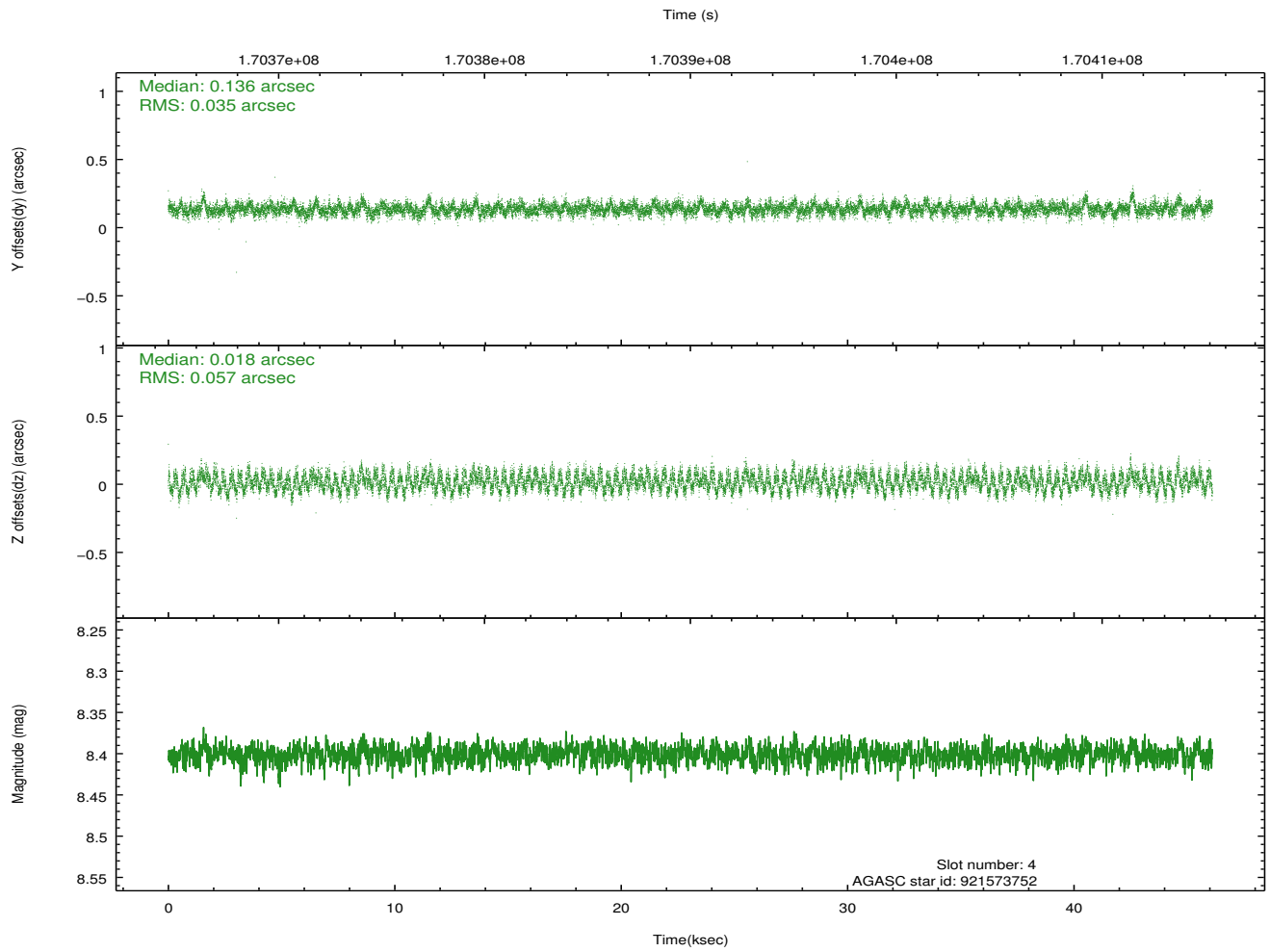
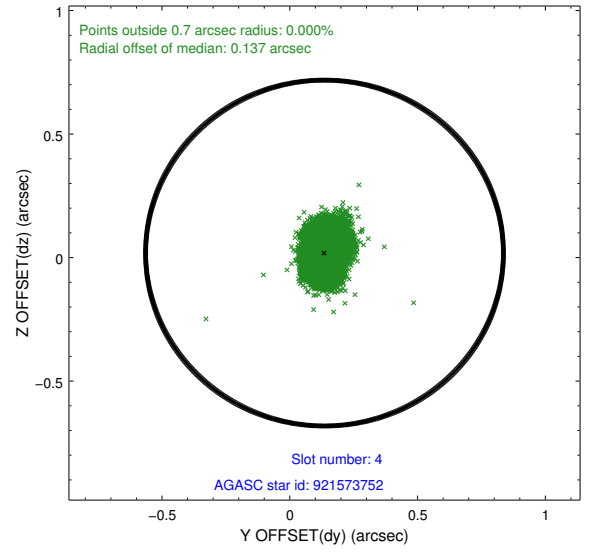
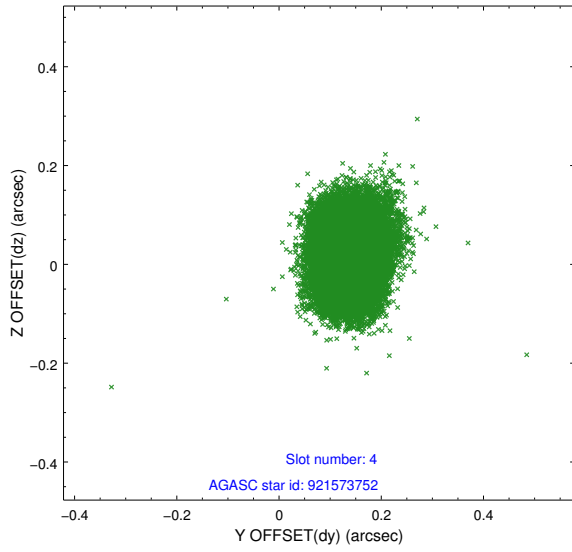
slot	status	id	mag	n_pts	med_dy	med_dz	dr1	dr2	ra	dec	mean_y	mean_z
0	FID	ACIS-I-1	7.24	11249	-0.031	0.059	0.006	0.011	0.000000	0.000000	937.35	-832.46
1	FID	ACIS-I-5	7.23	11247	-0.069	0.021	0.006	0.011	0.000000	0.000000	-1810.81	1064.98
2	FID	ACIS-I-6	7.26	11248	0.008	-0.009	0.007	0.011	0.000000	0.000000	402.93	1709.46
3	GUIDE	921571056	8.56	22489	-0.217	0.080	0.083	0.133	54.339011	-34.649674	1306.33	-1580.61
4	GUIDE	921573752	8.40	22495	0.136	0.018	0.073	0.114	55.297577	-34.906150	-1644.37	-1159.30
5	GUIDE	921575528	7.96	22489	0.081	0.129	0.060	0.095	55.012292	-34.549755	-596.00	-2280.81
6	GUIDE	921966544	7.91	22497	0.039	-0.124	0.069	0.105	54.743508	-35.636012	-486.87	1707.02
7	GUIDE	921970112	9.58	22480	-0.041	-0.097	0.141	0.228	54.291262	-35.695592	777.67	2149.97

## 2.4 Star Slots

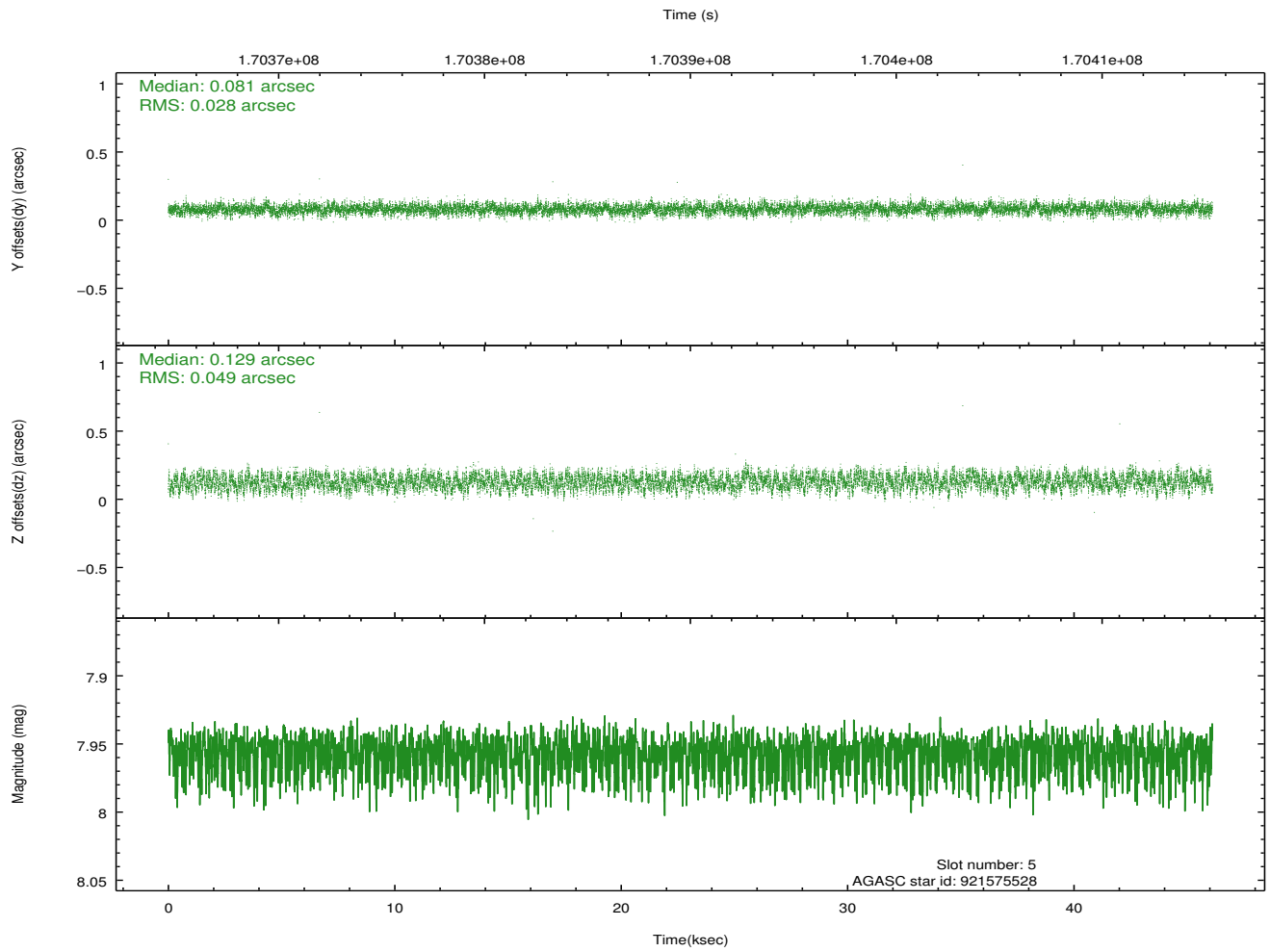
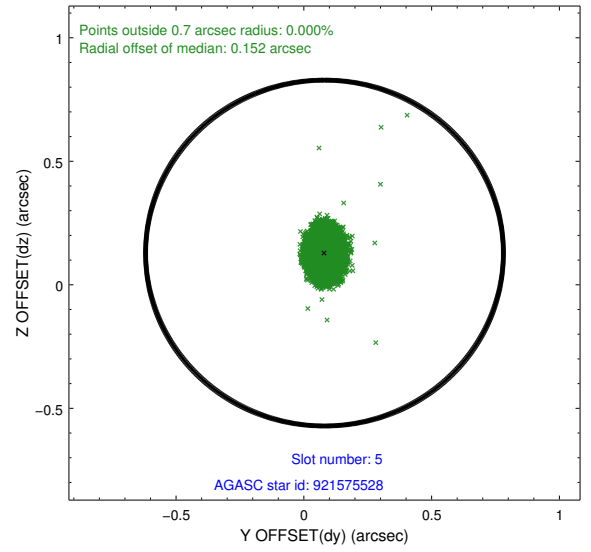
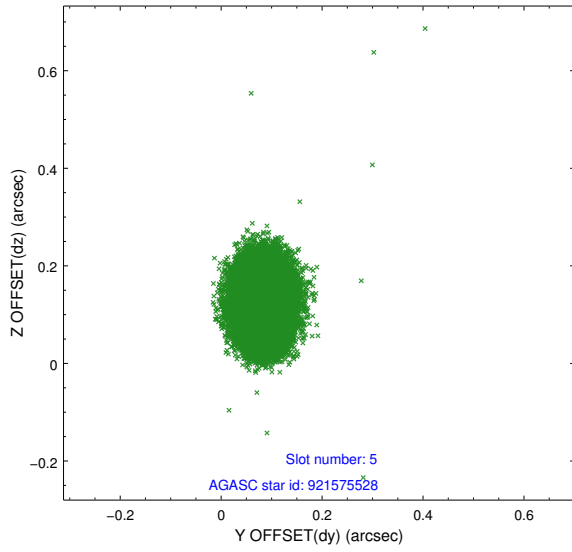
### 2.4.1 Slot 3



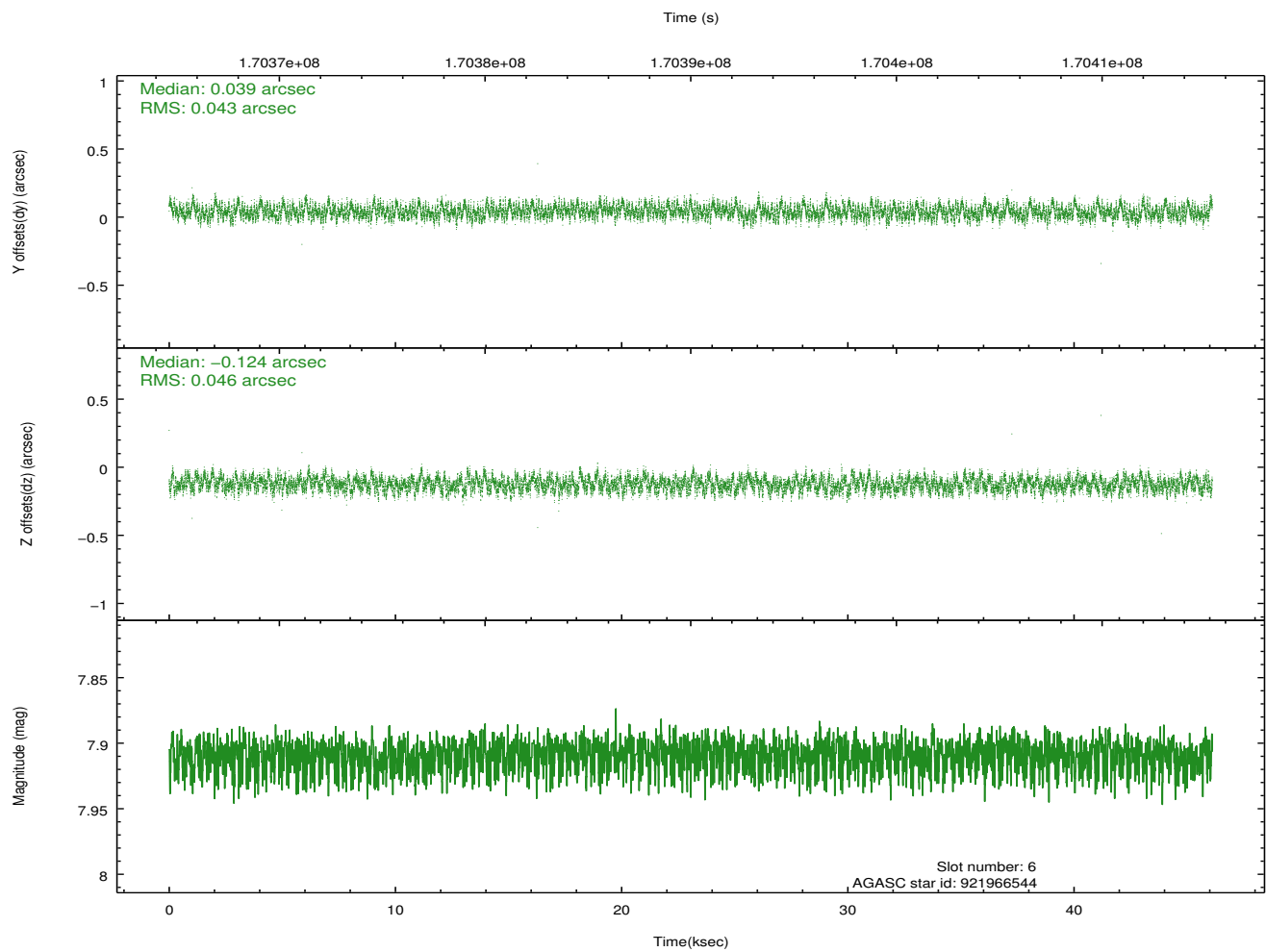
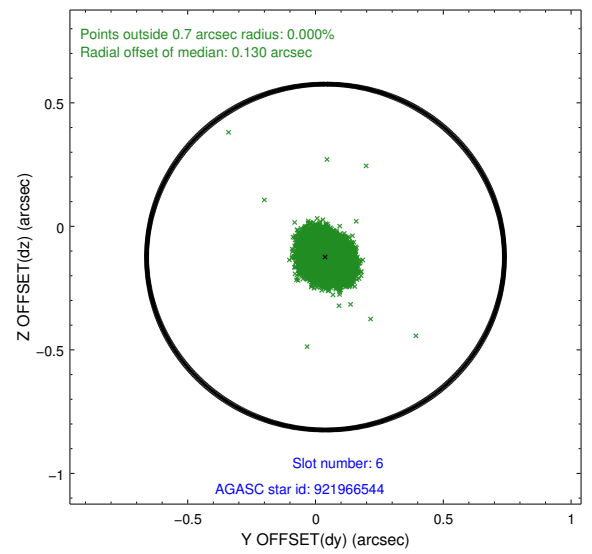
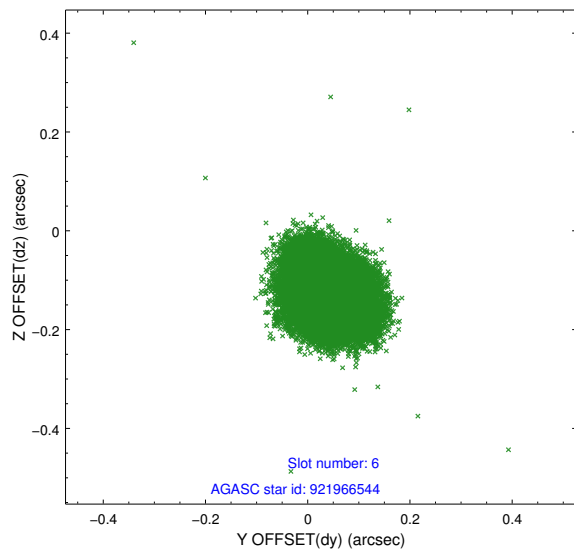
### 2.4.2 Slot 4



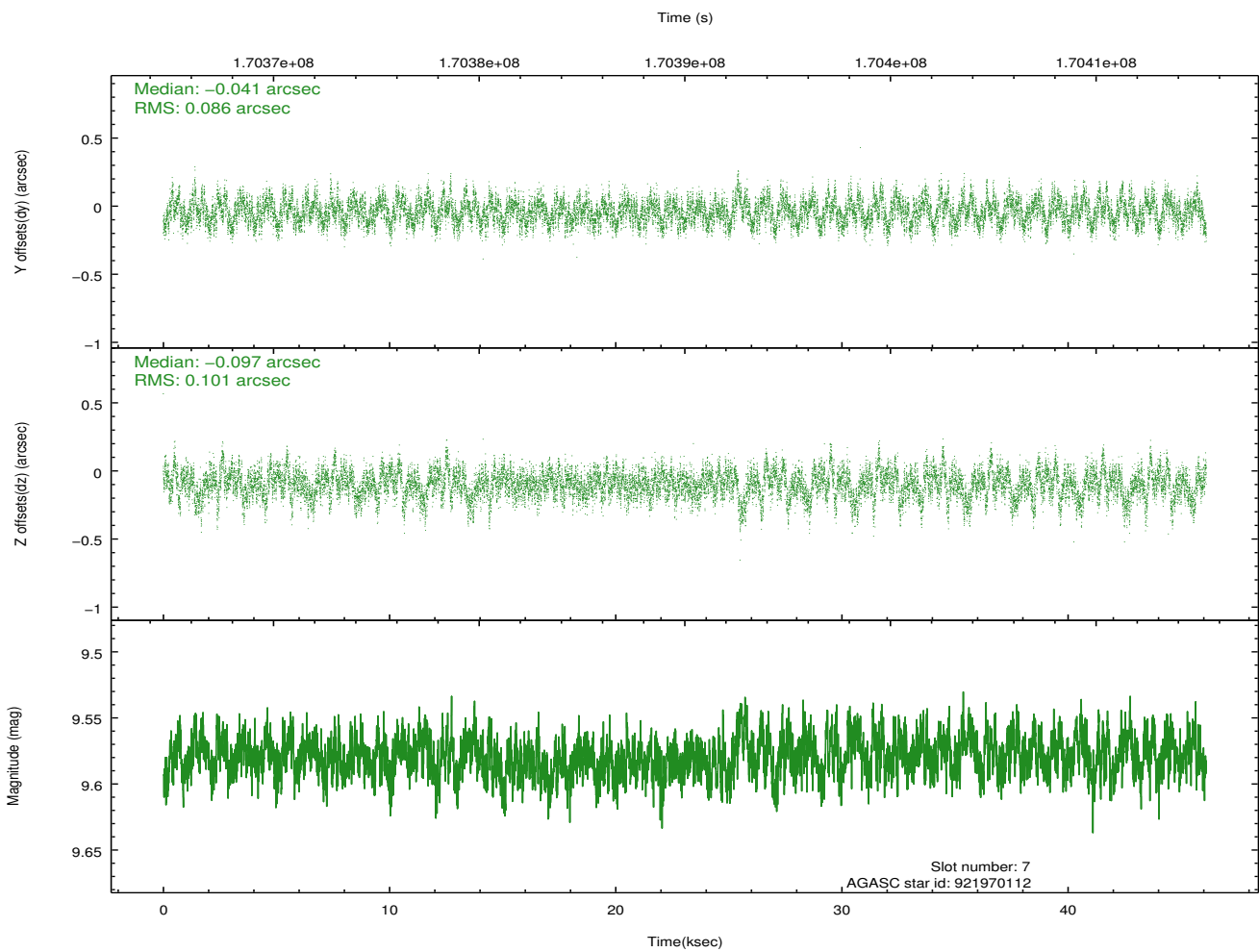
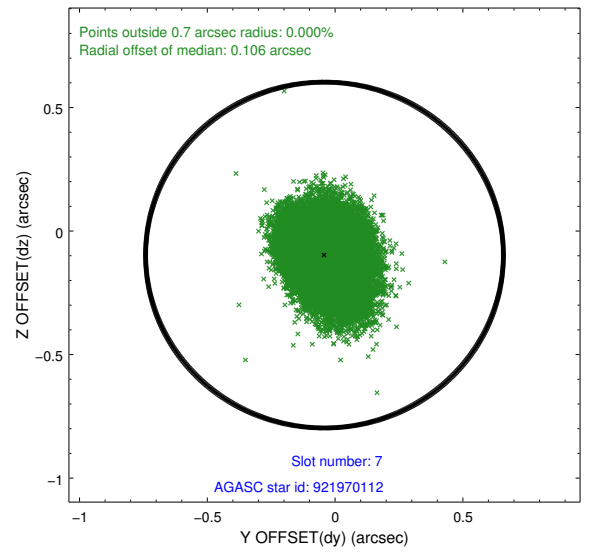
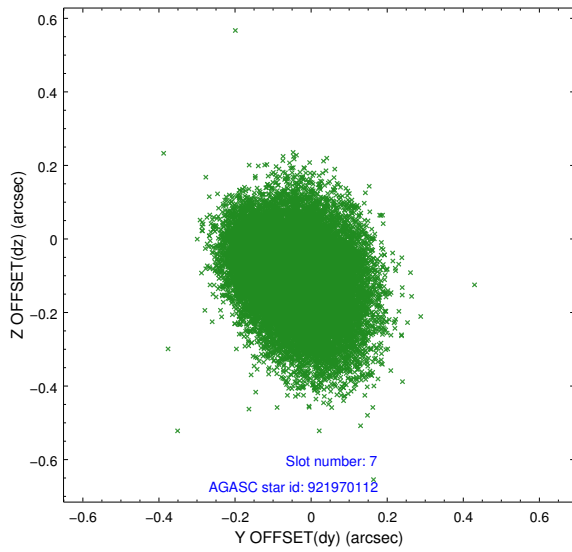
### 2.4.3 Slot 5



## 2.4.4 Slot 6

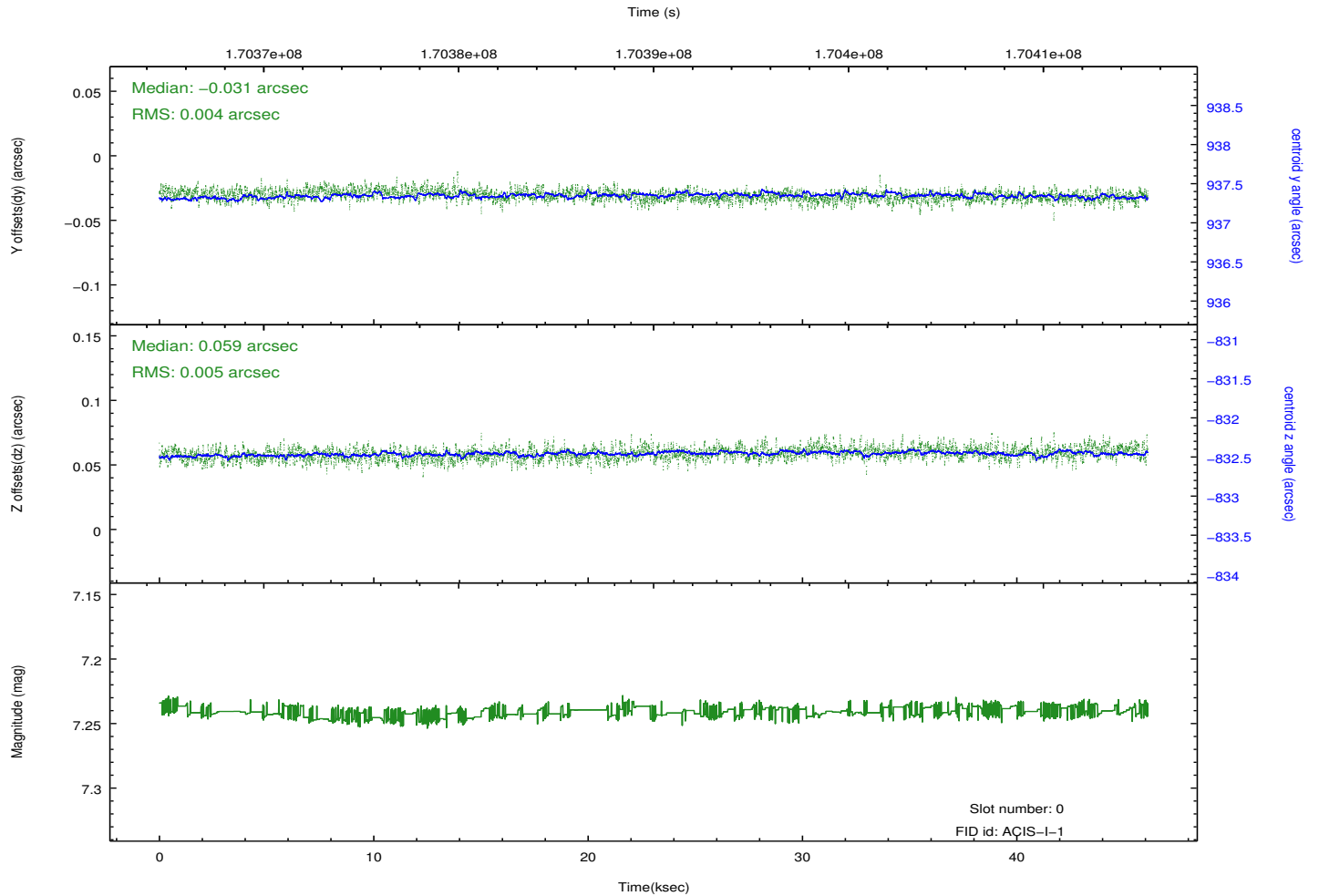
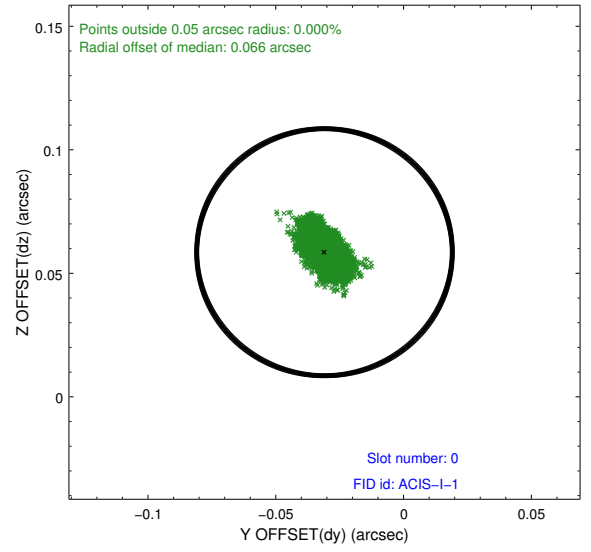
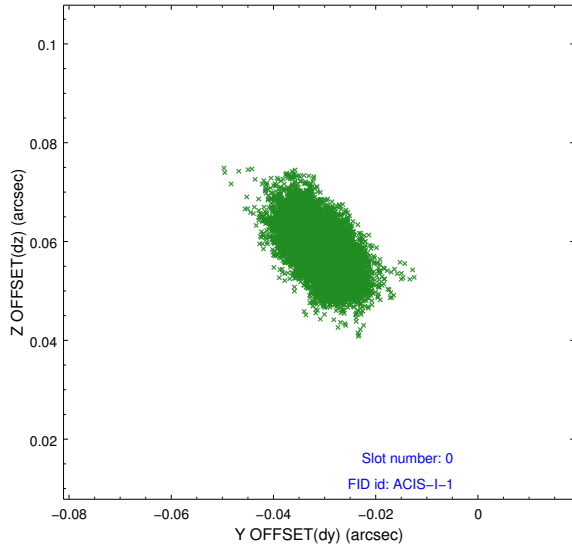


## 2.4.5 Slot 7

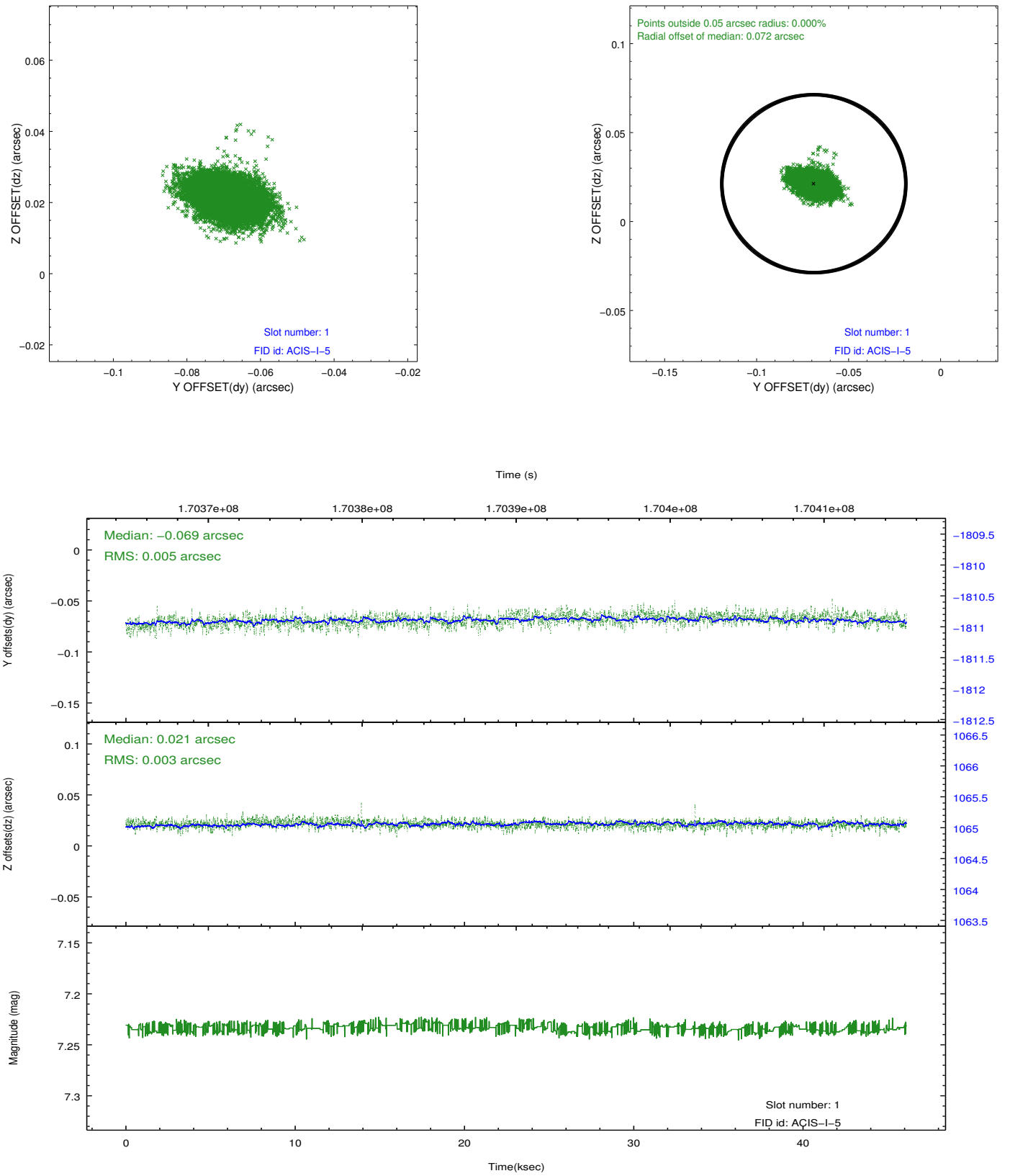


## 2.5 FID Slots

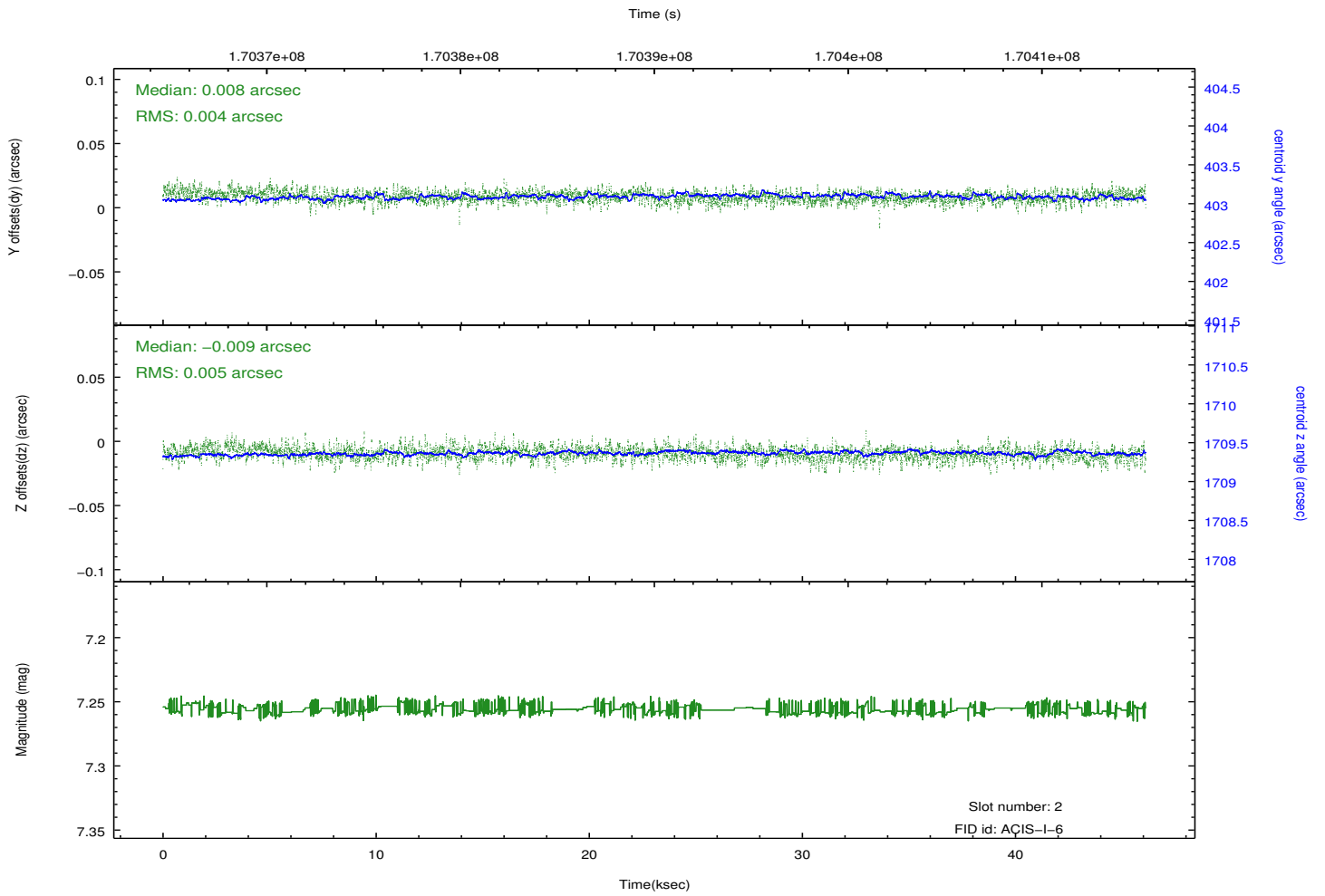
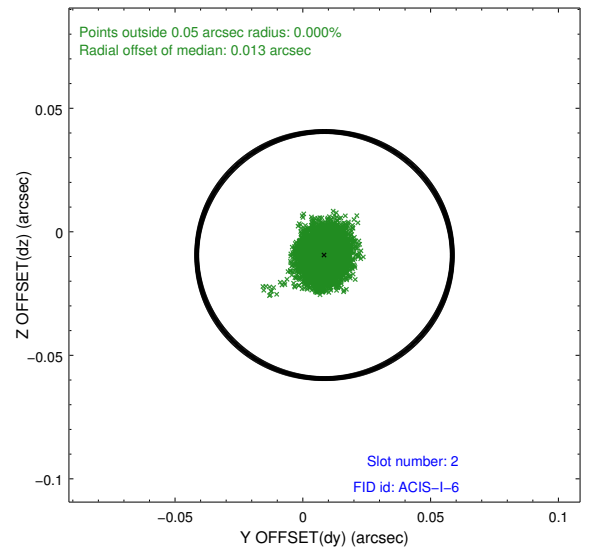
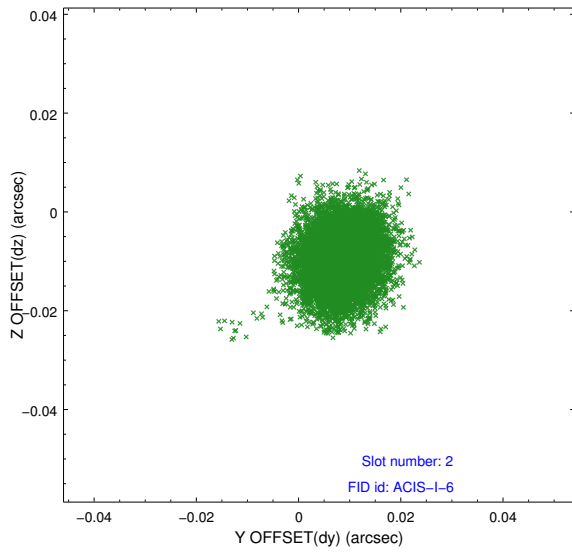
### 2.5.1 Slot 0



## 2.5.2 Slot 1



### 2.5.3 Slot 2



## A Summary

### A.1 Status

V&V Scientist	Jen Lauer
V&V Date (YYYY-MM-DD)	2012.11.15
V&V Edition	1
V&V Disposition and Status	OK
V&V Charge Time	45.678

### A.2 Comments