

V&V Reference Report

L2 ASCDS Version : 8.4.5

Observation 4283 - L2 Version 3
Chandra X-Ray Center

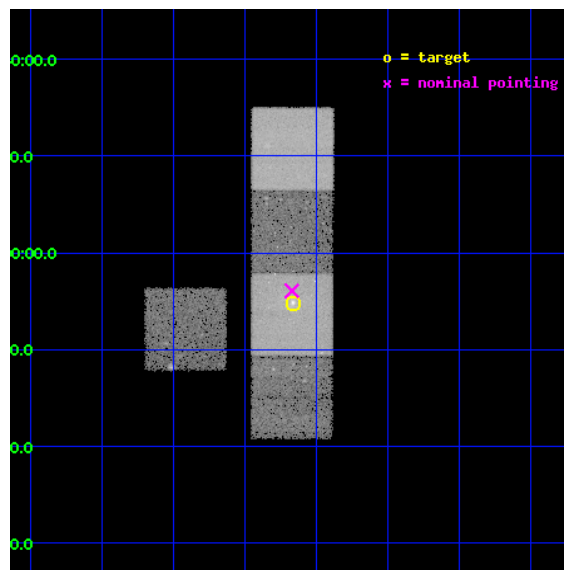
L2 Processing Date : Oct 14 2012

Contents

1	Front	2
2	OBI	3
2.1	OBI	3
2.1.1	Images	3
2.1.2	Bias	3
2.1.3	Parameters	4
2.1.4	Events	4
2.2	Compared Parameters	5
2.3	Aspect	6
2.4	Star Slots	9
2.4.1	Slot 3	9
2.4.2	Slot 4	10
2.4.3	Slot 5	11
2.4.4	Slot 6	12
2.4.5	Slot 7	13
2.5	FID Slots	14
2.5.1	Slot 0	14
2.5.2	Slot 1	15
2.5.3	Slot 2	16
A	Summary	17
A.1	Status	17
A.2	Comments	17

1 Front

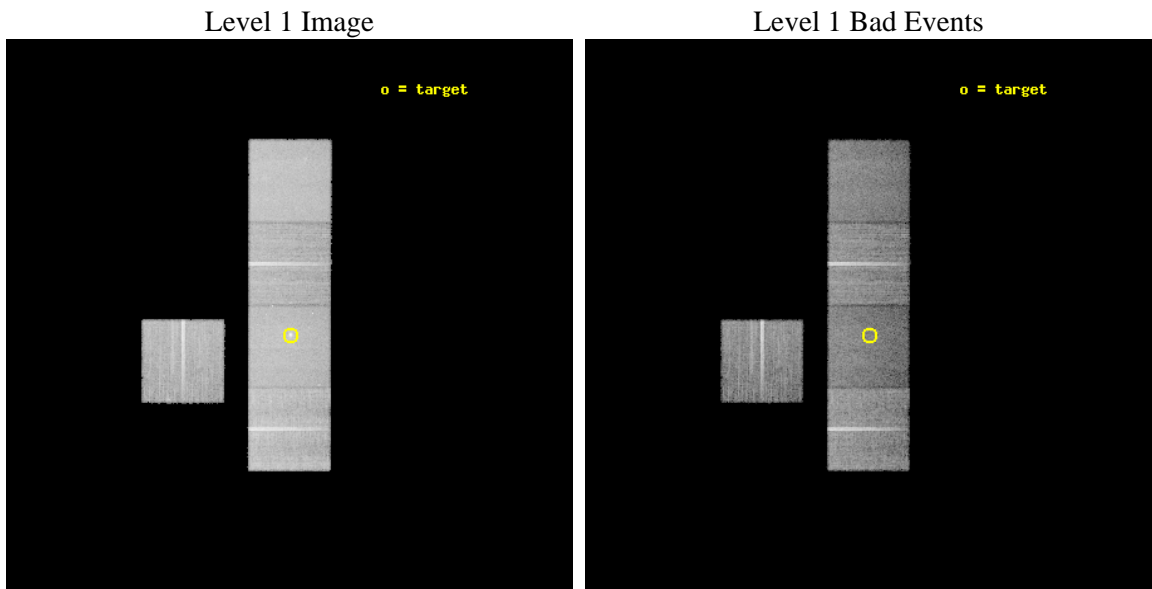
seq_num	600218	Sequence number
obs_id	4283	Observation id
title	STELLAR MASS LOSS VERSUS EXTERNAL ACCRETION IN X-RAY BRIGHT ELLIPTICALS	Proposal title
observer	Dr. CRAIG SARAZIN	Principal investigator
object	NGC1600	Source name
dtcycle	0	
cycle	P	events from which exps? Prim/Second/Both
ra_targ	67.91625	Observer's specified target RA [deg]
dec_targ	-5.086139	Observer's specified target Dec [deg]
ra_nom	67.917916432114	Nominal RA [deg]
dec_nom	-5.0654297338731	Nominal Dec [deg]
roll_nom	90.156788082244	Nominal Roll [deg]
revision	3	Processing version of data
ontime	27137.399947792	Sum of GTIs [s]
livetime	26782.829839211	Livetime [s]
ontime3	27134.258957654	Sum of GTIs [s]
ontime5	27137.399947792	Sum of GTIs [s]
ontime6	27134.258987576	Sum of GTIs [s]
ontime7	27137.399947792	Sum of GTIs [s]
ontime8	27134.259077221	Sum of GTIs [s]
l2events	229016	Number of level 2 events



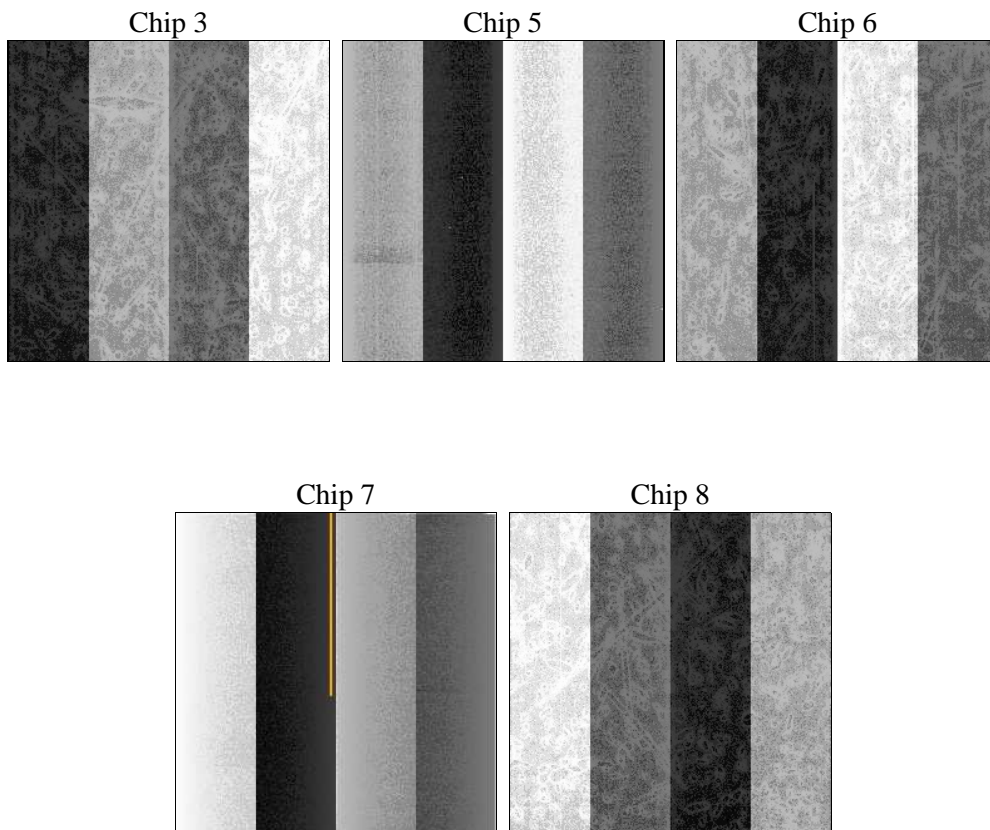
2 OBI

2.1 OBI

2.1.1 Images



2.1.2 Bias



2.1.3 Parameters

obi_num	0	Obi number	sched_exp_time	27000.000000	[s] Scheduled observation exposure time
ascdsver	8.4.5	Processing system revision	ontime	27137.399947792	Sum of GTIs [s]
caldbver	4.5.2	 	ontime3	27134.258957654	Sum of GTIs [s]
date	2012-10-14T19:31:20	Date and time of file creation	ontime5	27137.399947792	Sum of GTIs [s]
revision	3	Processing version of data	ontime6	27134.258987576	Sum of GTIs [s]
			ontime7	27137.399947792	Sum of GTIs [s]
			ontime8	27134.259077221	Sum of GTIs [s]
			l1events	847026	Number of level 1 events

2.1.4 Events

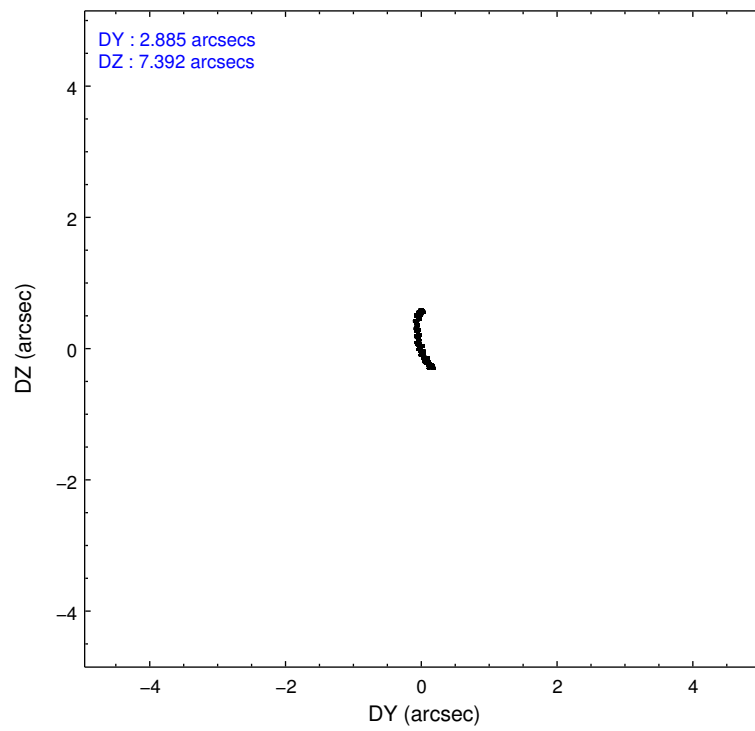
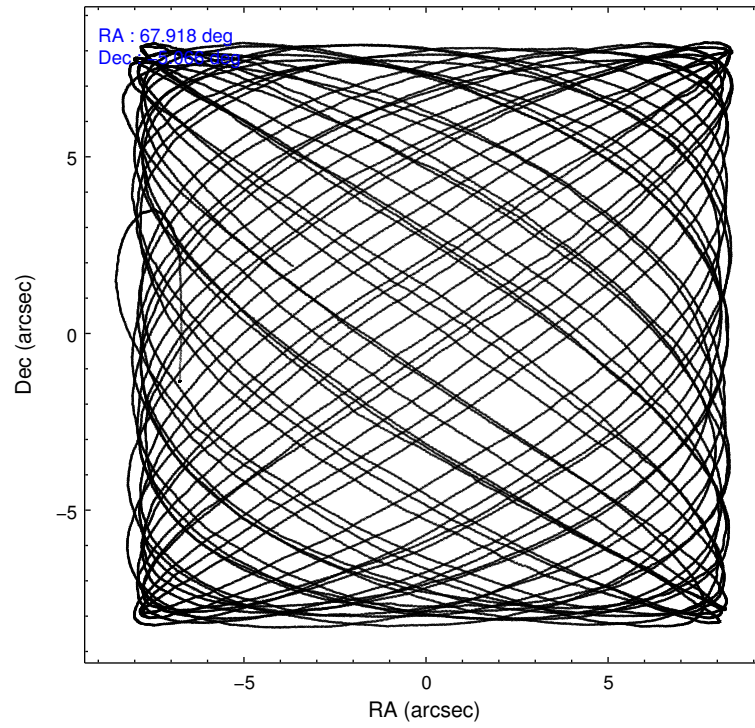
	ccd 3	ccd 5	ccd 6	ccd 7	ccd 8
level 1 events	142131	194374	150117	174812	185592
rejected events	127842	95356	132141	85544	143417
rejected %	89%	49%	88%	48%	77%

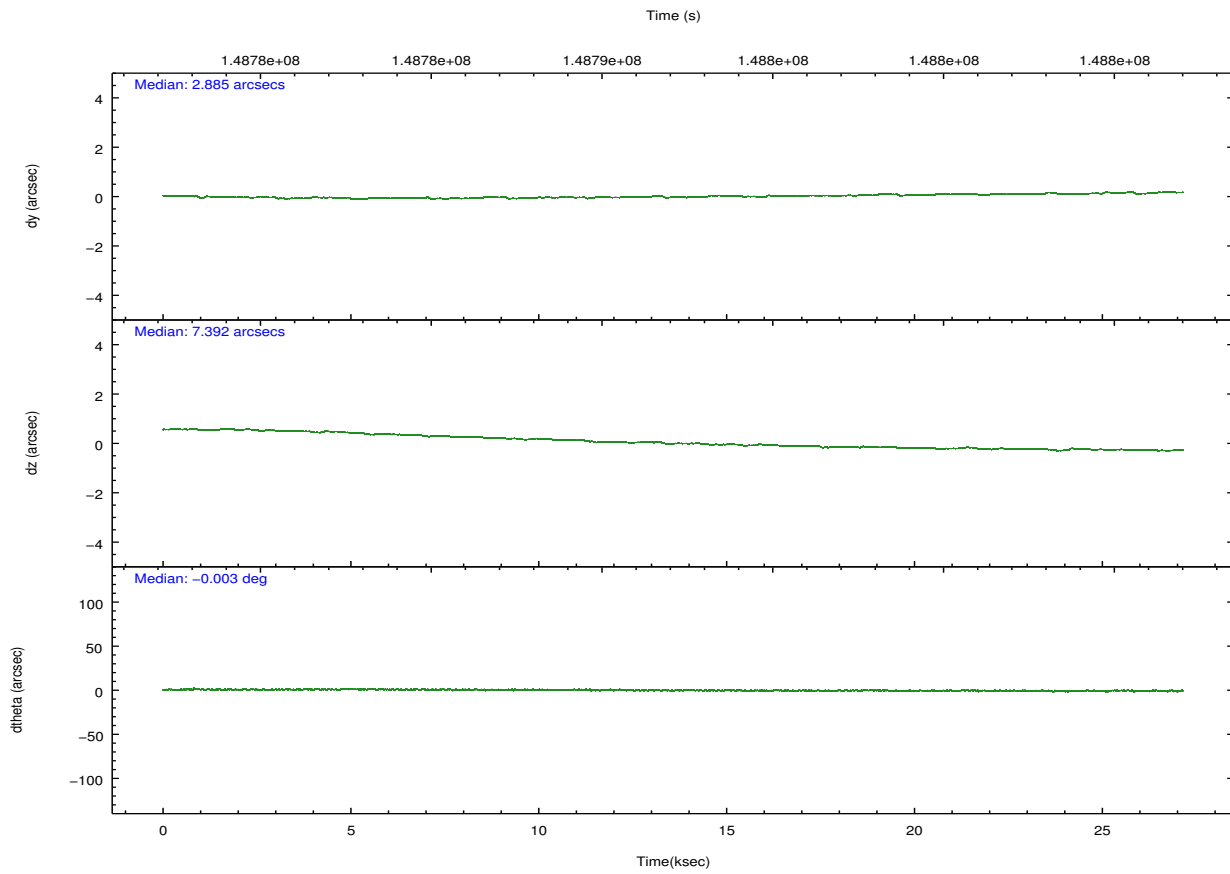
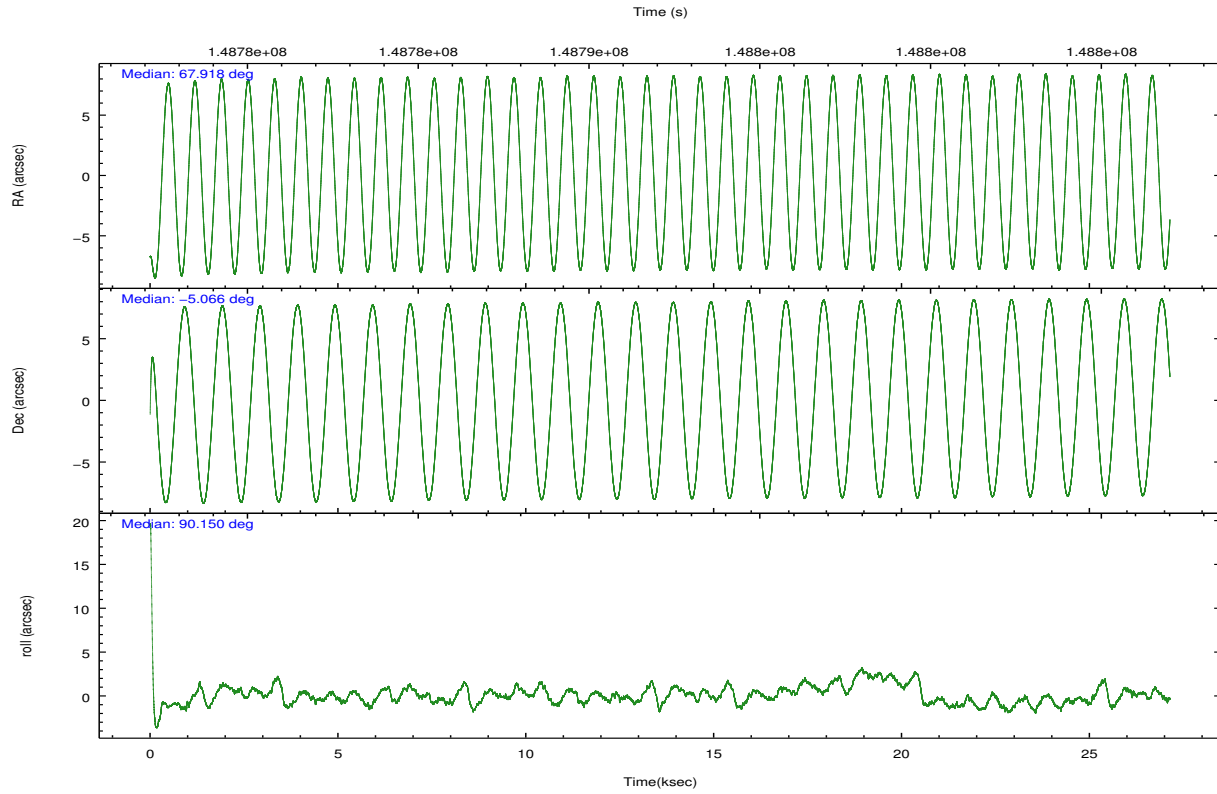
	ccd 3	ccd 5	ccd 6	ccd 7	ccd 8
grade 0 events	5636	8780	7883	11186	14091
	3%	4%	5%	6%	7%
grade 1 events	71	155	66	131	118
	0%	0%	0%	0%	0%
grade 2 events	2912	29065	3489	18272	8800
	2%	14%	2%	10%	4%
grade 3 events	1598	5018	1787	8656	4548
	1%	2%	1%	4%	2%
grade 4 events	1621	4870	1751	8653	4230
	1%	2%	1%	4%	2%
grade 5 events	5349	15436	5534	16860	7776
	3%	7%	3%	9%	4%
grade 6 events	2575	51734	3130	42890	10681
	1%	26%	2%	24%	5%
grade 7 events	122369	79316	126477	68164	135348
	86%	40%	84%	38%	72%

2.2 Compared Parameters

Parameter	Planned	Actual	Parameter	Planned	Actual
Instrument	ACIS	ACIS	Obspar format version number	7	7
Detector	ACIS-35678	ACIS-35678	Obspar file type	PREDICTED	ACTUAL
Grating	NONE	NONE	Obspar update status	NONE	UPDATED
Data mode	VFAINT	VFAINT	Number of optional ACIS chips dropped	0	0
Observation mode	POINTING	POINTING	On-chip summing requested	N	N
[deg] Pointing RA	67.931978	67.9179164321136	Subarray requested	NONE	NONE
[deg] Pointing Dec	-5.088804	-5.065429733873124	Alternating exposures requested	N	N
[deg] Pointing Roll	90.001395	90.15678808224413	[s] Primary exposure time	0.000000	3.1
[mm] SIM focus pos	-0.684267	-0.6828225247311905			
[mm] SIM defocus	0	0.001444936568705701			
[mm] SIM translation stage pos	-190.132523	-190.1400660498719			
[mm] SIM translation stage offset	0	0.00754346686406393			
[s] Observation start time (MET)	148778655.184000	148777641.76846			
Observation start date	2002-09-18T23:23:11	2002-09-18T23:07:21			
[s] Observation end time (MET)	148805655.184000	148806515.50715			
Observation end date	2002-09-19T06:53:11	2002-09-19T07:08:35			
Read mode	TIMED	TIMED			

2.3 Aspect



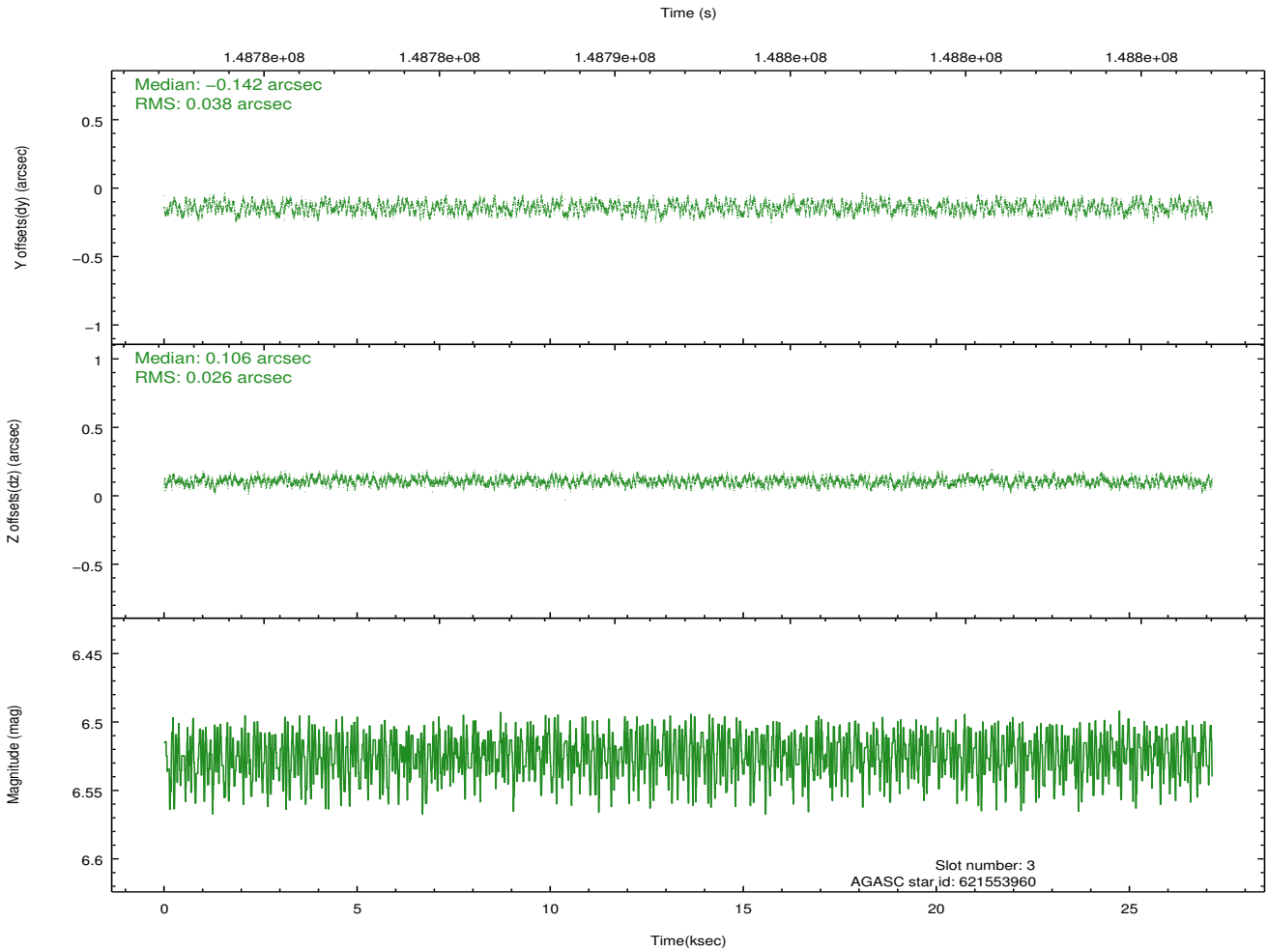
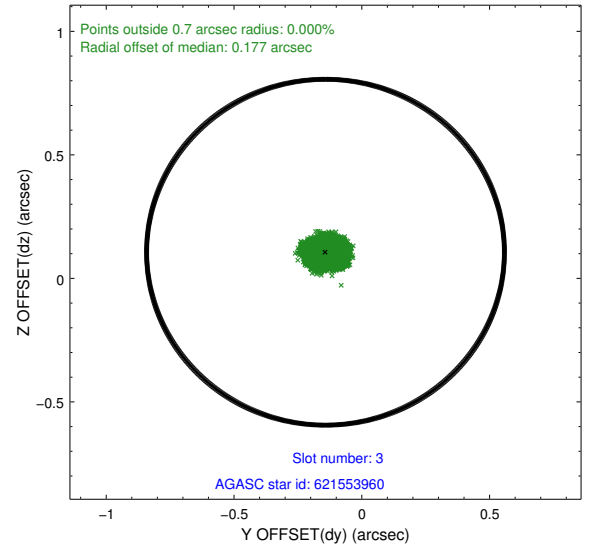
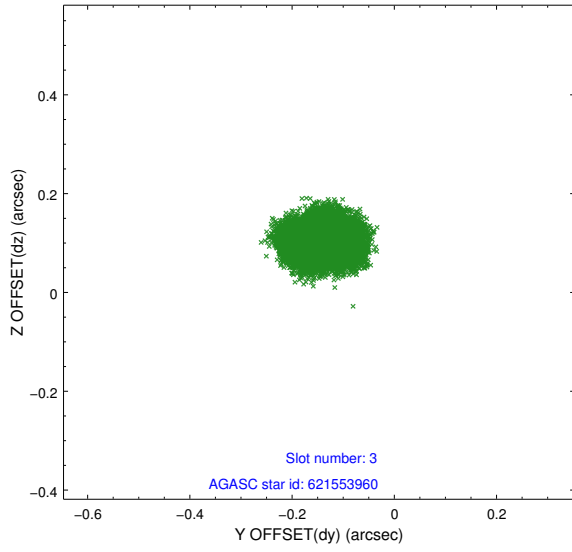


Slot Statistics

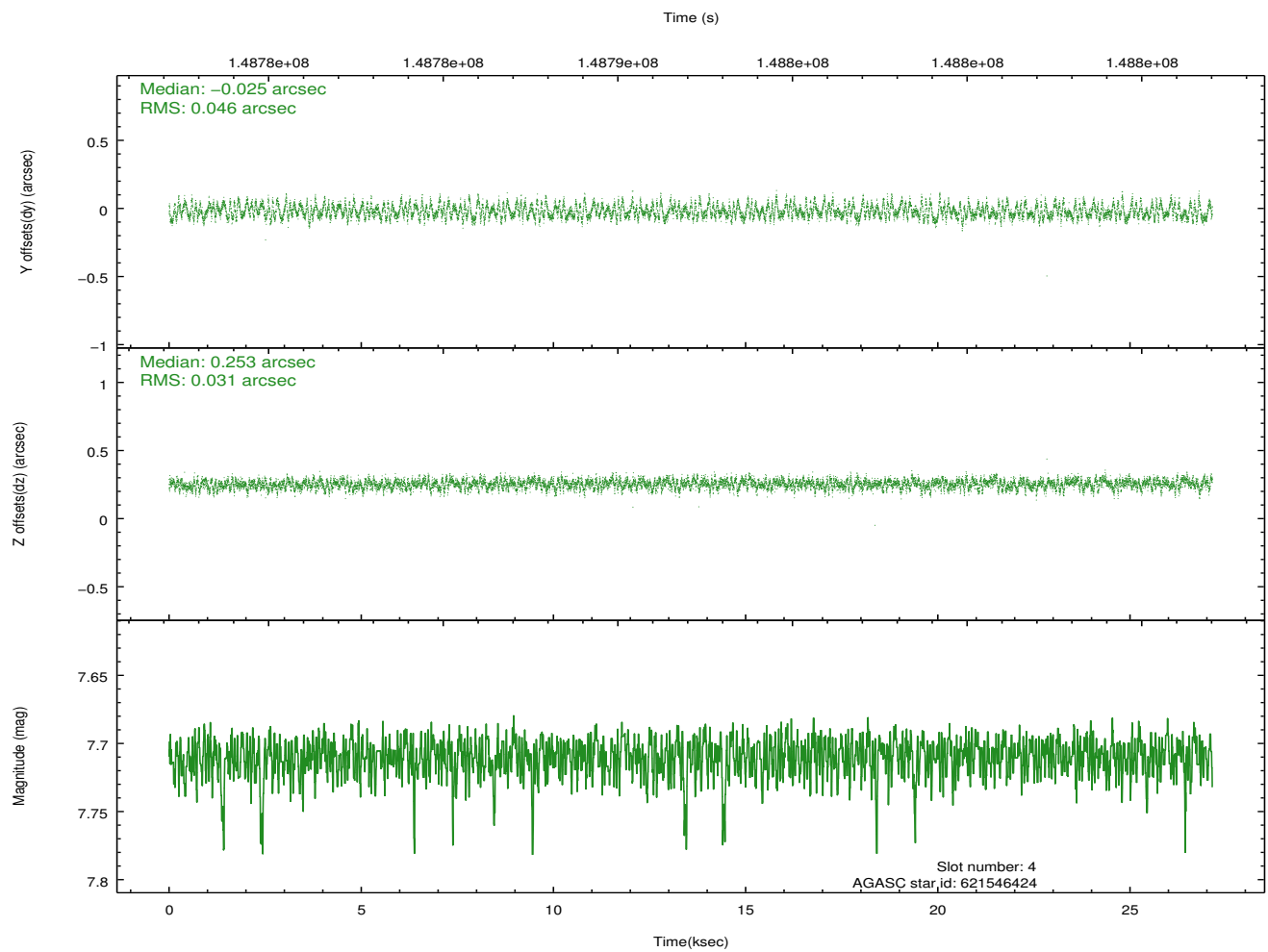
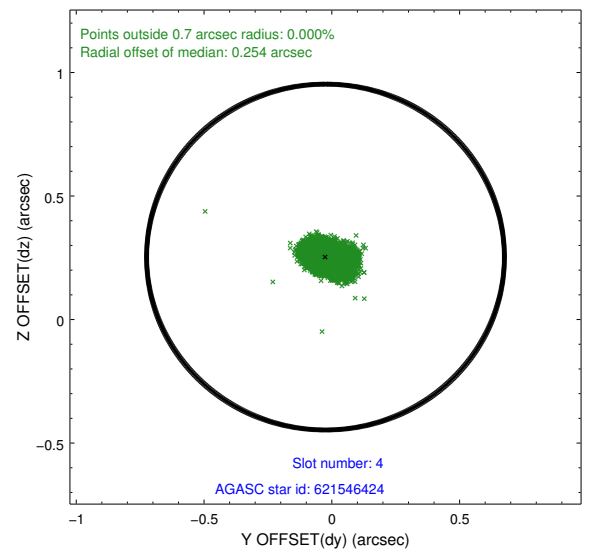
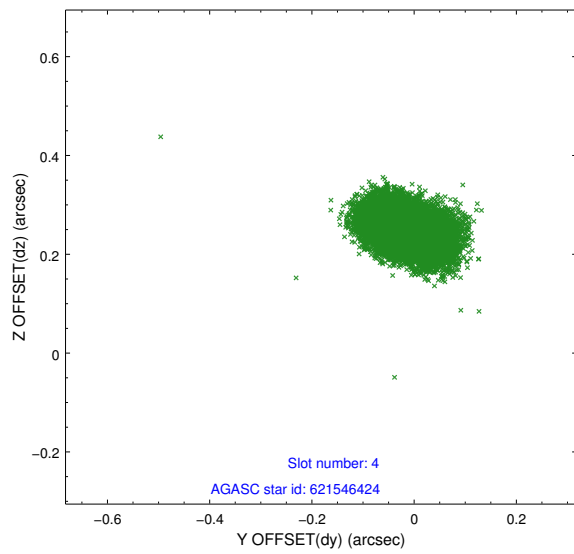
slot	status	id	mag	n_pts	med_dy	med_dz	dr1	dr2	ra	dec	mean_y	mean_z
0	FID	ACIS-S-3	7.35	6619	-0.088	-0.061	0.015	0.023	0.000000	0.000000	57.53	-1857.77
1	FID	ACIS-S-4	7.20	6619	0.021	0.077	0.015	0.021	0.000000	0.000000	2157.84	179.74
2	FID	ACIS-S-5	7.24	6619	0.038	-0.006	0.007	0.012	0.000000	0.000000	-1808.22	173.56
3	GUIDE	621553960	6.52	13239	-0.142	0.106	0.051	0.076	68.435033	-5.309670	-794.88	-1802.58
4	GUIDE	621546424	7.71	13210	-0.025	0.253	0.059	0.096	68.622214	-5.138021	-177.54	-2474.12
5	GUIDE	619986032	7.90	13236	-0.173	-0.250	0.050	0.080	67.431542	-4.597237	1769.61	1796.20
6	GUIDE	621544064	8.50	13236	0.072	0.186	0.071	0.115	68.548522	-4.557927	1911.56	-2211.52
7	GUIDE	620375512	8.89	13235	0.268	-0.292	0.088	0.145	67.329905	-5.680923	-2132.08	2156.84

2.4 Star Slots

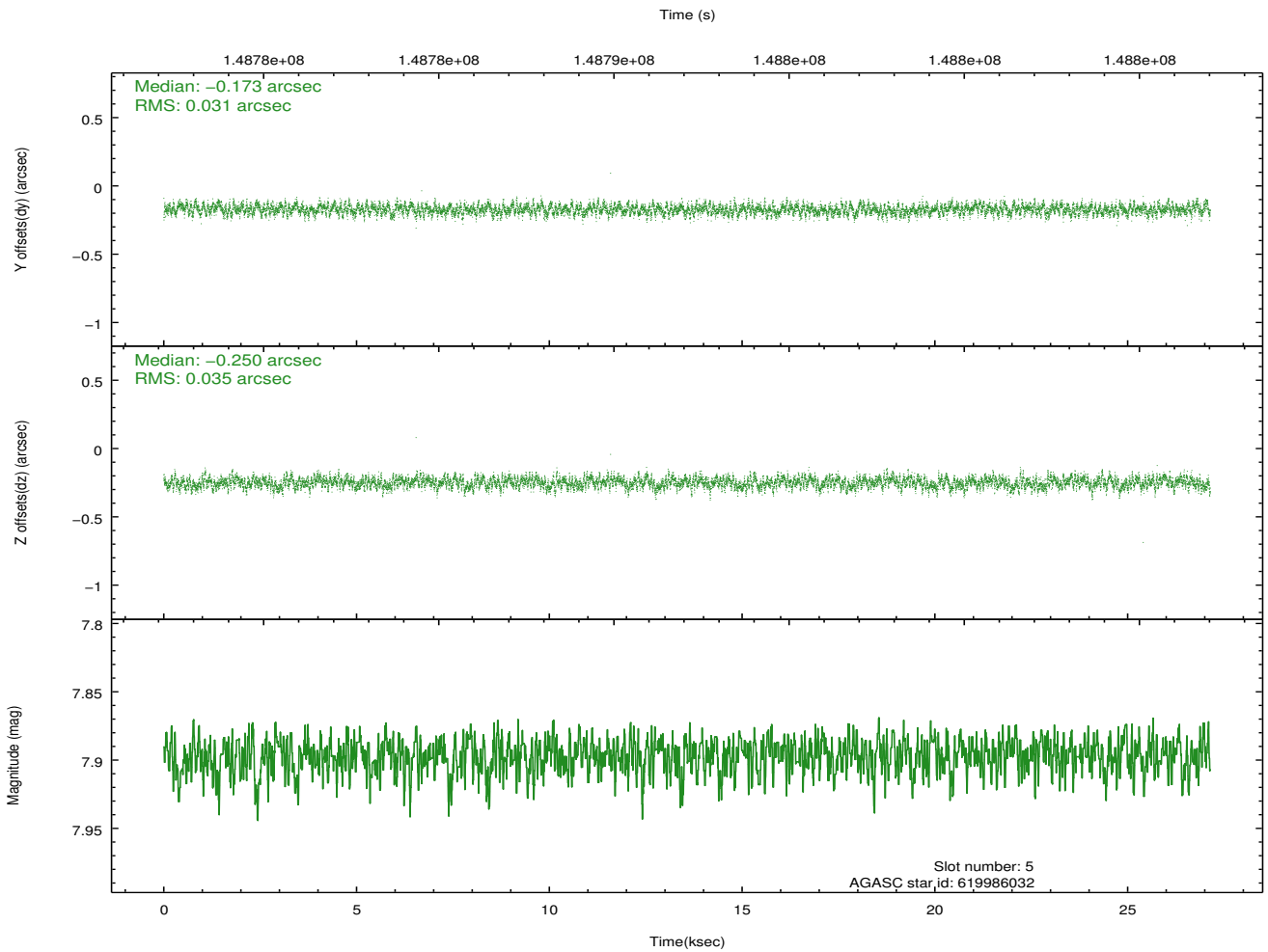
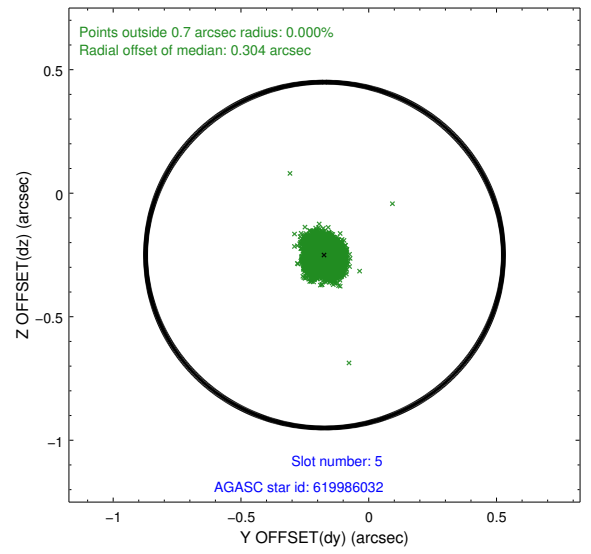
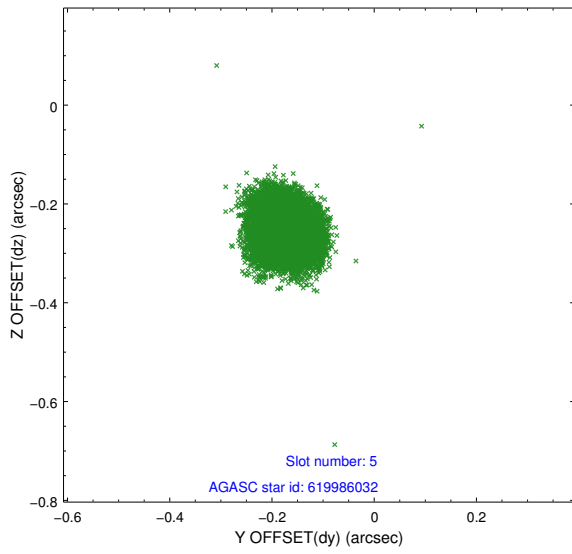
2.4.1 Slot 3



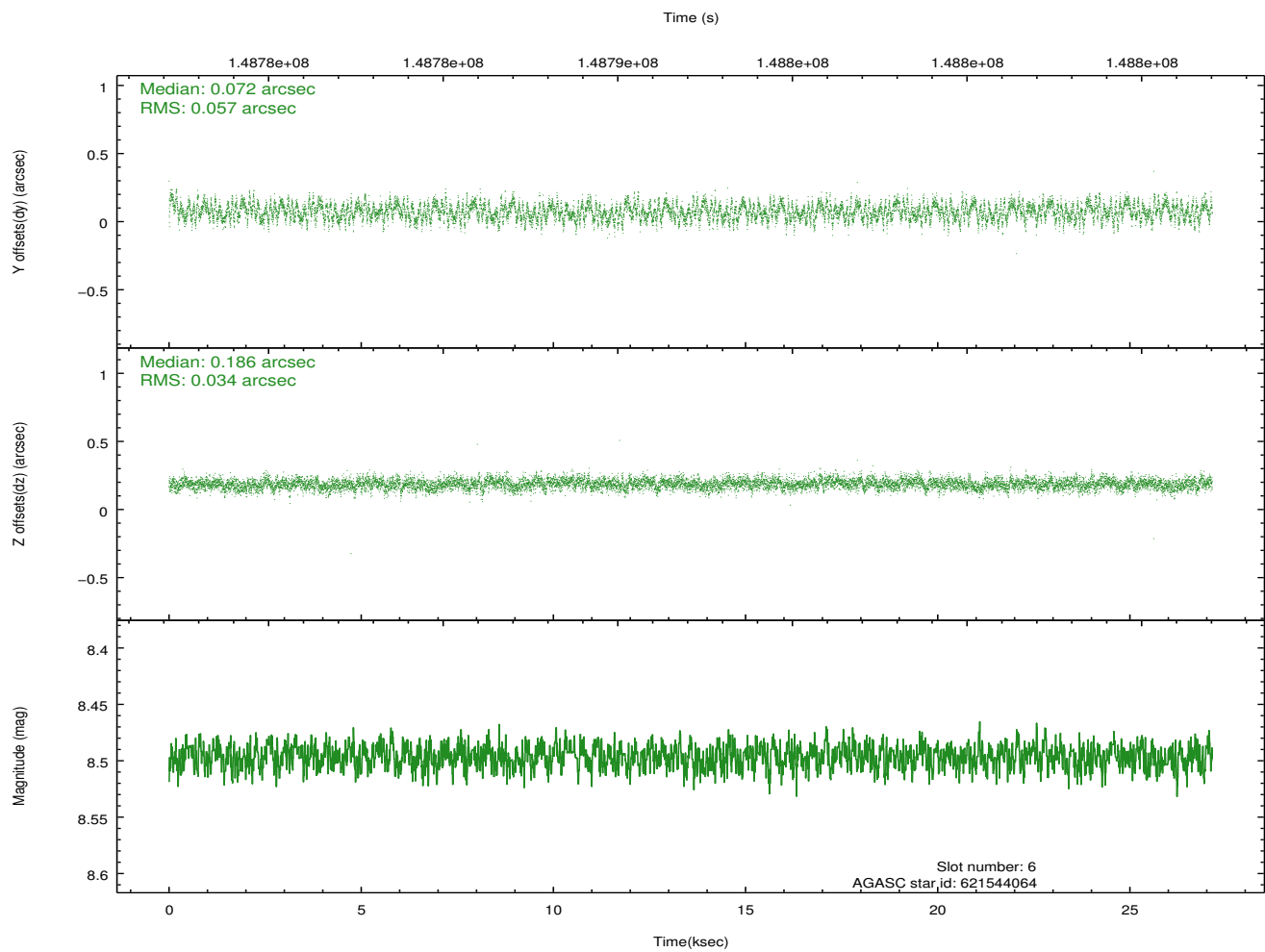
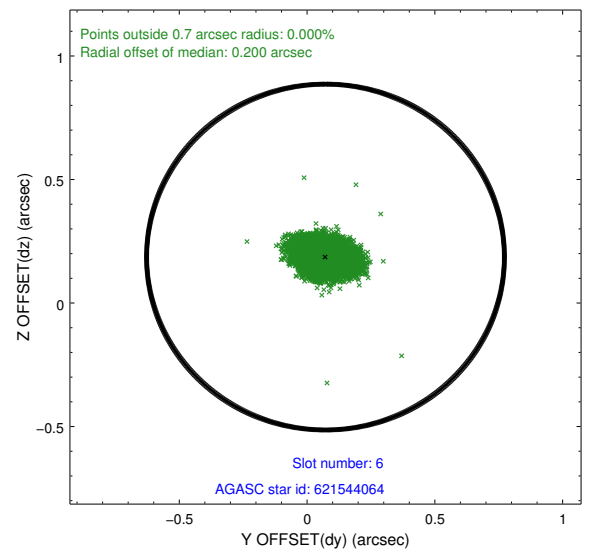
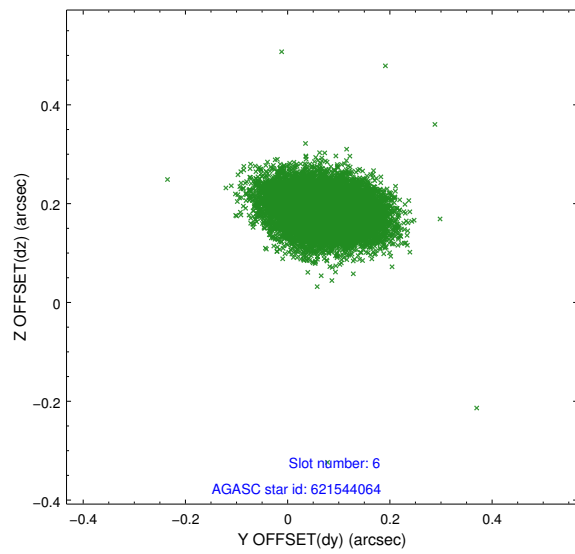
2.4.2 Slot 4



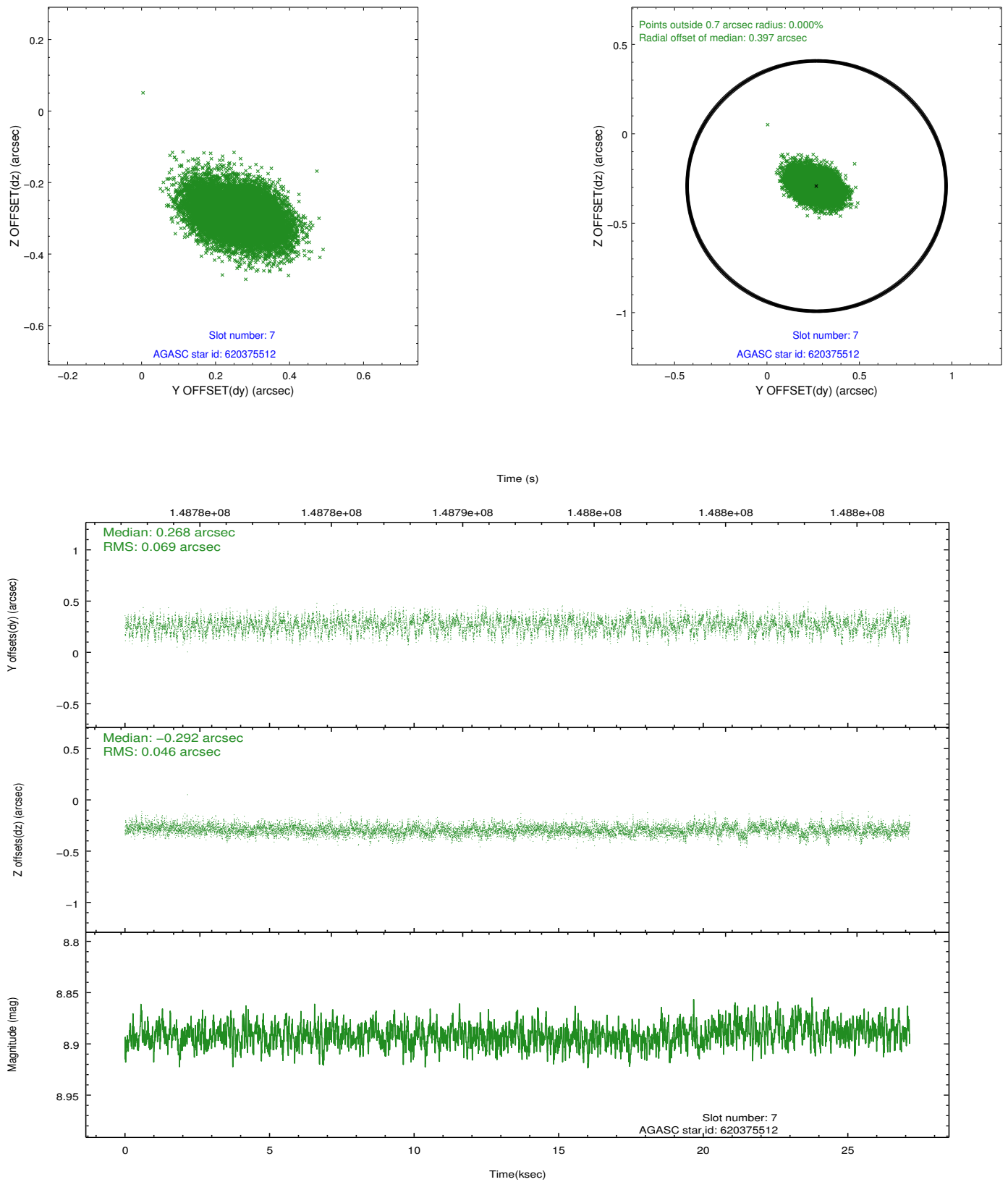
2.4.3 Slot 5



2.4.4 Slot 6

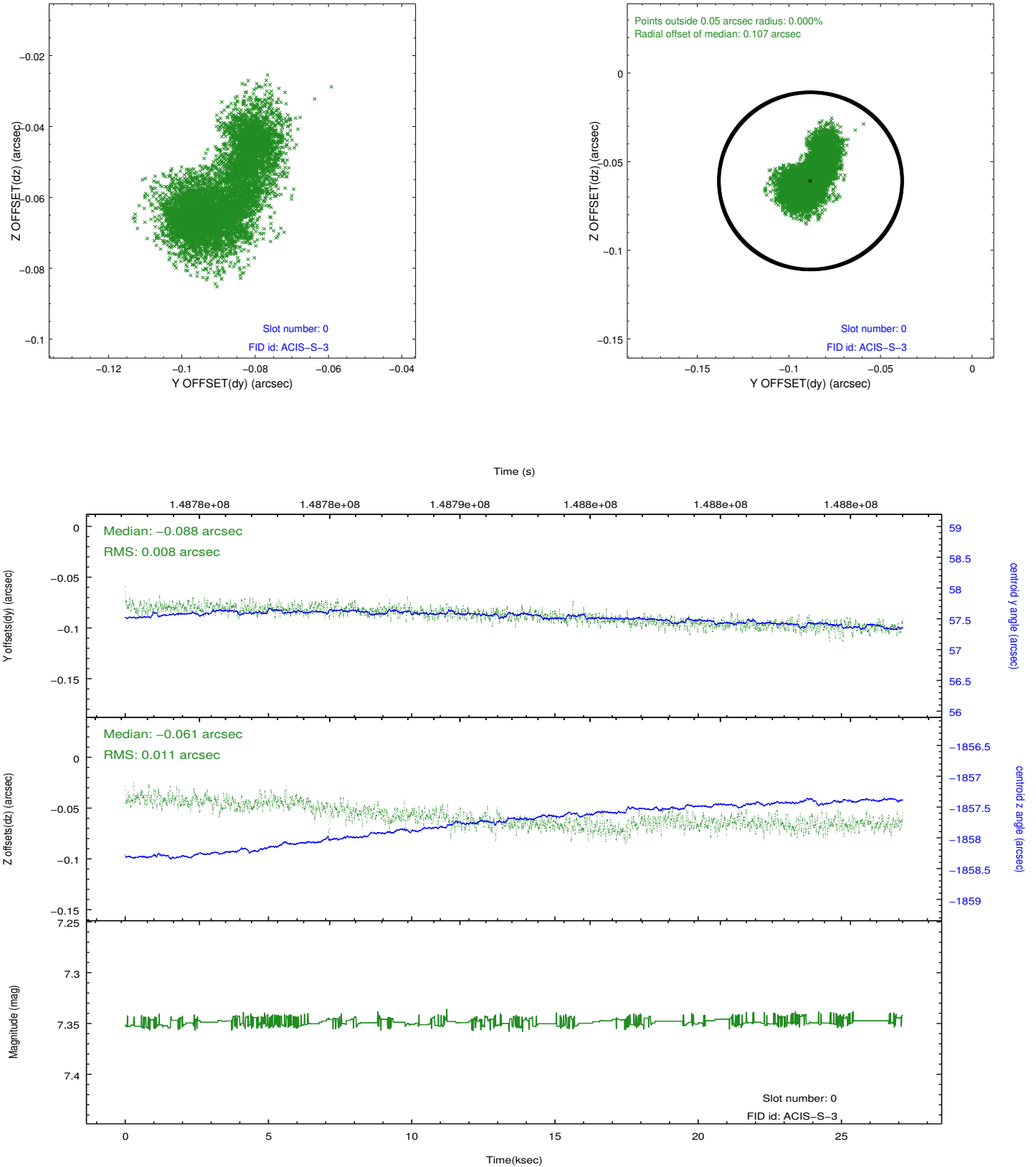


2.4.5 Slot 7

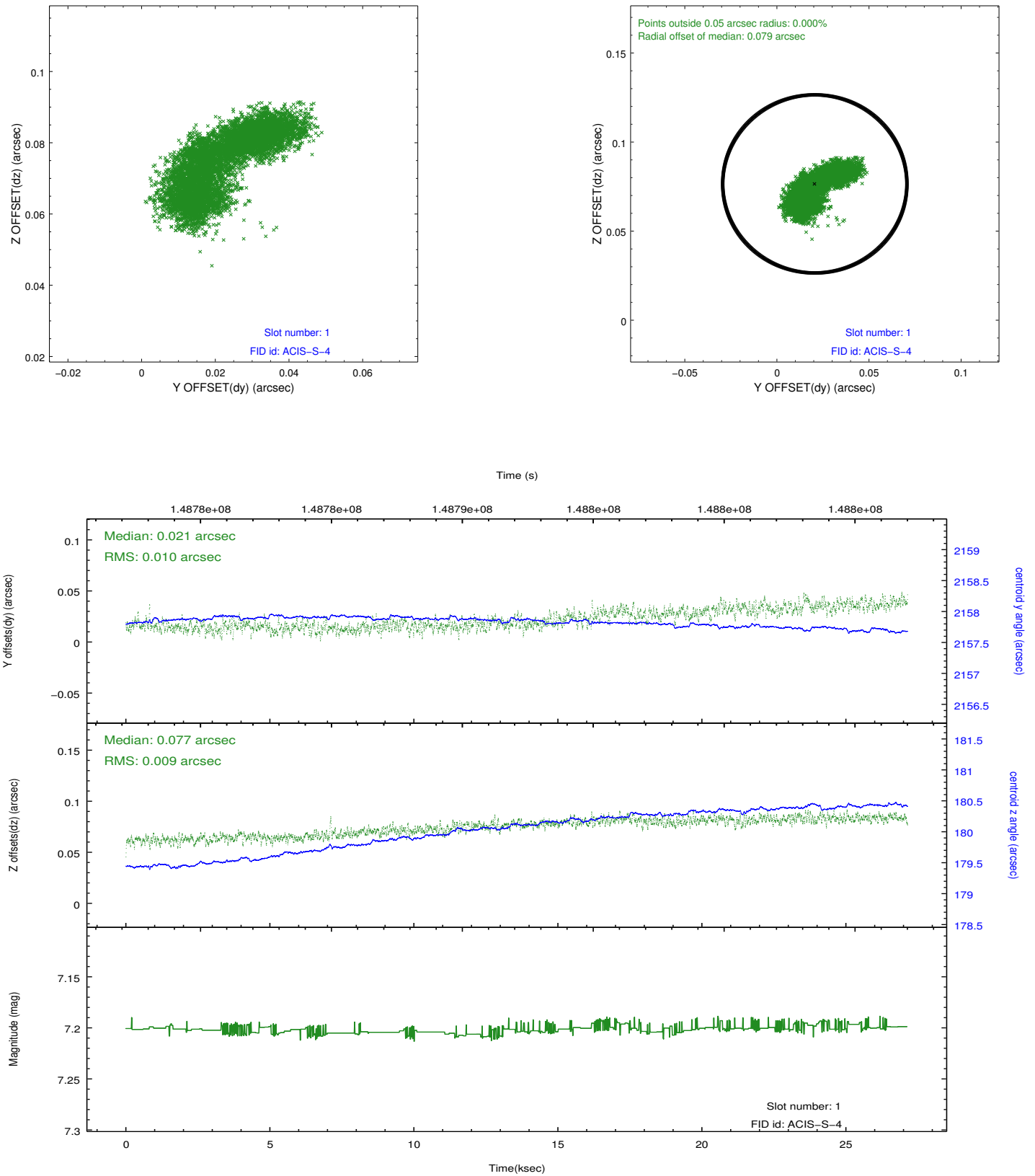


2.5 FID Slots

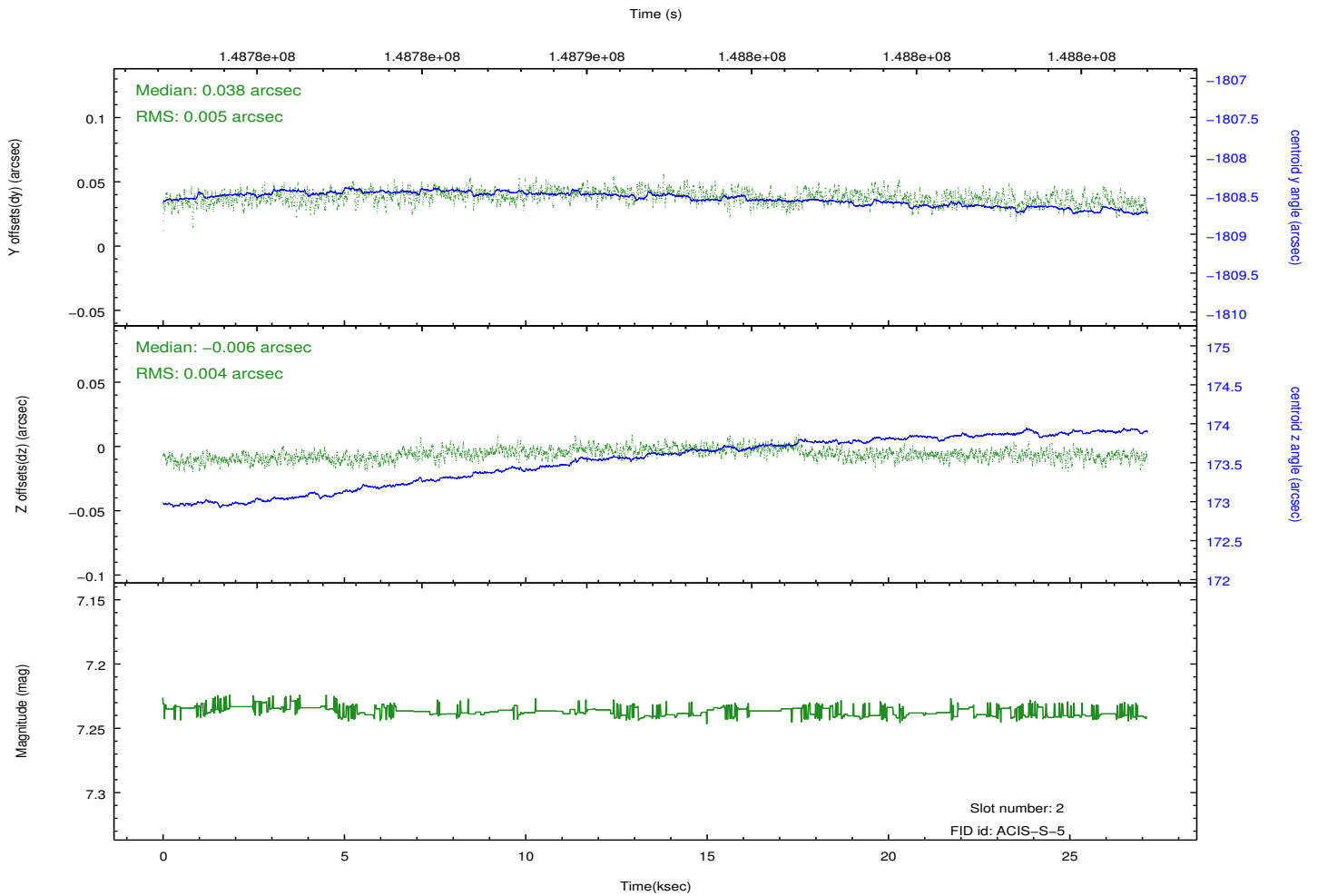
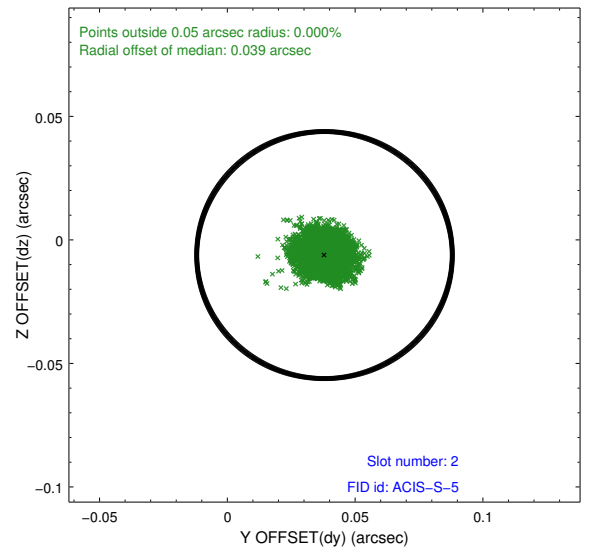
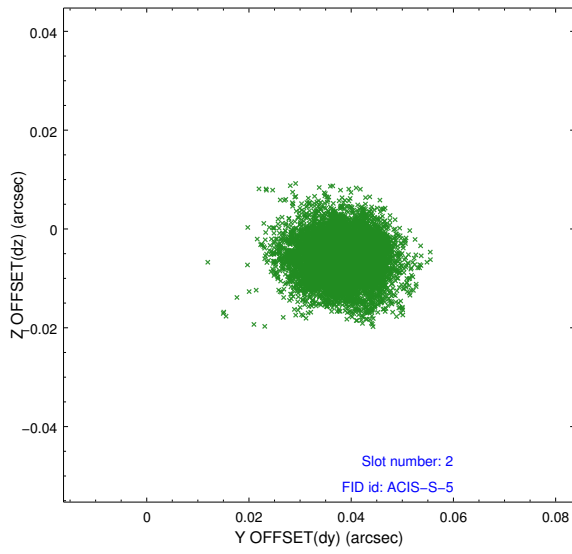
2.5.1 Slot 0



2.5.2 Slot 1



2.5.3 Slot 2



A Summary

A.1 Status

V&V Scientist	Beth Sundheim
V&V Date (YYYY-MM-DD)	2012.10.24
V&V Edition	1
V&V Disposition and Status	OK
V&V Charge Time	27.137

A.2 Comments