

V&V Reference Report

L2 ASCDS Version : 8.5.1.1

Observation 4383 - L2 Version 3
Chandra X-Ray Center

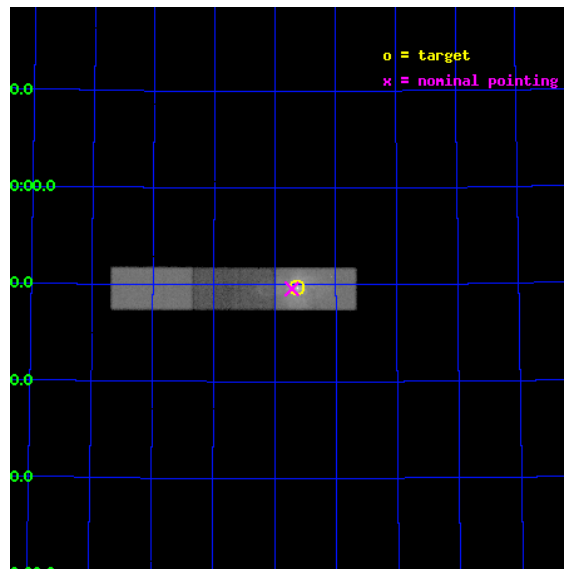
L2 Processing Date : Jan 15 2013

Contents

1	Front	2
2	OBI	3
2.1	OBI	3
2.1.1	Images	3
2.1.2	Bias	3
2.1.3	Parameters	4
2.1.4	Events	4
2.2	Compared Parameters	5
2.3	Aspect	6
2.4	Star Slots	9
2.4.1	Slot 3	9
2.4.2	Slot 4	10
2.4.3	Slot 5	11
2.4.4	Slot 6	12
2.4.5	Slot 7	13
2.5	FID Slots	14
2.5.1	Slot 0	14
2.5.2	Slot 1	15
2.5.3	Slot 2	16
A	Summary	17
A.1	Status	17
A.2	Comments	17

1 Front

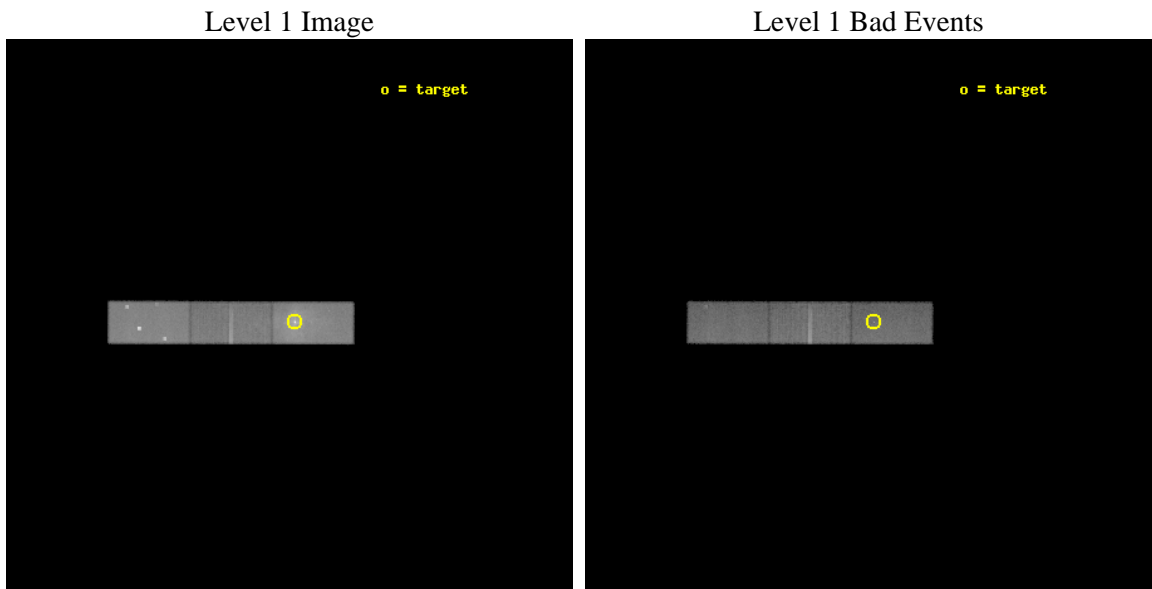
seq_num	500311	Sequence number
obs_id	4383	Observation id
title	A DETAILED STUDY OF 3C58 - THE YOUNGEST KNOWN PULSAR NEBULA IN THE GALAXY	Proposal title
observer	Dr. Patrick Slane	Principal investigator
object	3C58	Source name
dtcycle	0	
cycle	P	events from which exps? Prim/Second/Both
ra_targ	31.407917	Observer's specified target RA [deg]
dec_targ	64.828267	Observer's specified target Dec [deg]
ra_nom	31.430237477569	Nominal RA [deg]
dec_nom	64.826587124727	Nominal Dec [deg]
roll_nom	0.13641834938532	Nominal Roll [deg]
revision	3	Processing version of data
ontime	39720.000229537	Sum of GTIs [s]
liveltime	38726.661365512	Livetime [s]
ontime5	39729.846419483	Sum of GTIs [s]
ontime6	39720.000309289	Sum of GTIs [s]
ontime7	39720.000229537	Sum of GTIs [s]
l2events	344252	Number of level 2 events



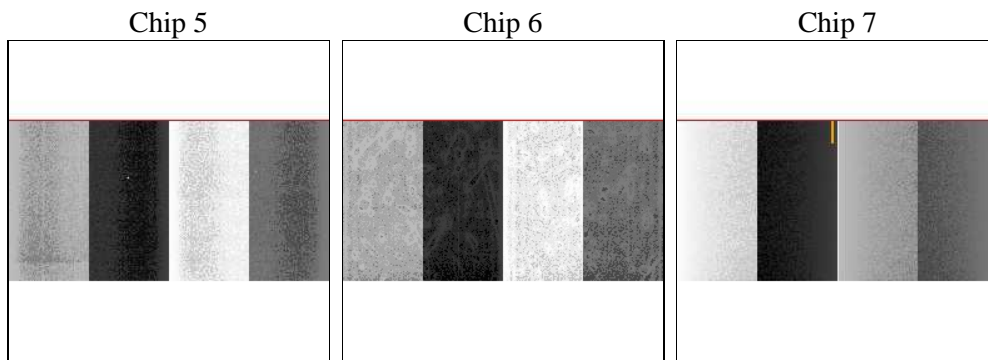
2 OBI

2.1 OBI

2.1.1 Images



2.1.2 Bias



2.1.3 Parameters

obi_num	2	Obi number	sched_exp_time	39954.554000	[s] Scheduled observation exposure time
ascdsver	8.5.1.1	Processing system revision	ontime	39720.000229537	Sum of GTIs [s]
caldbver	4.5.5	 	ontime5	39729.846419483	Sum of GTIs [s]
date	2013-01-15T21:06:50	Date and time of file creation	ontime6	39720.000309289	Sum of GTIs [s]
revision	3	Processing version of data	ontime7	39720.000229537	Sum of GTIs [s]
			l1events	721178	Number of level 1 events

2.1.4 Events

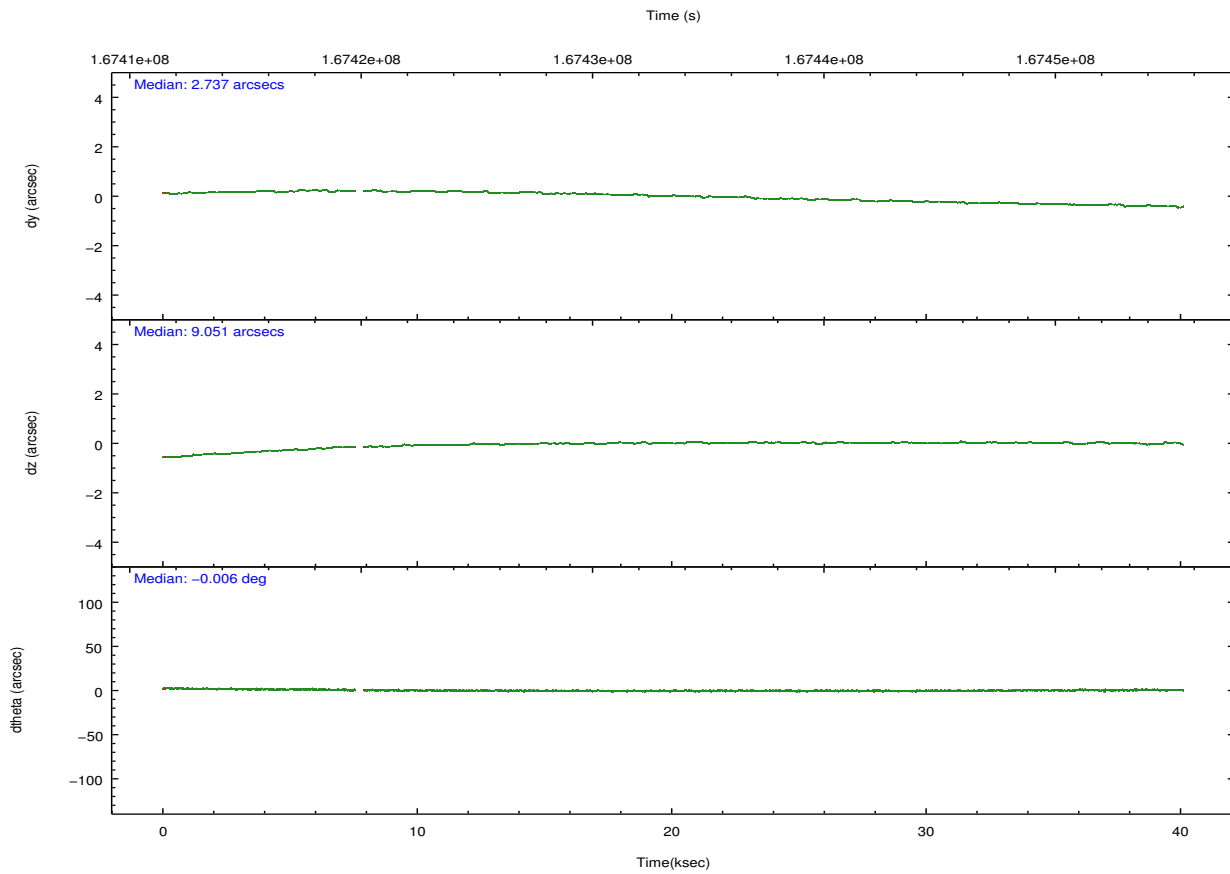
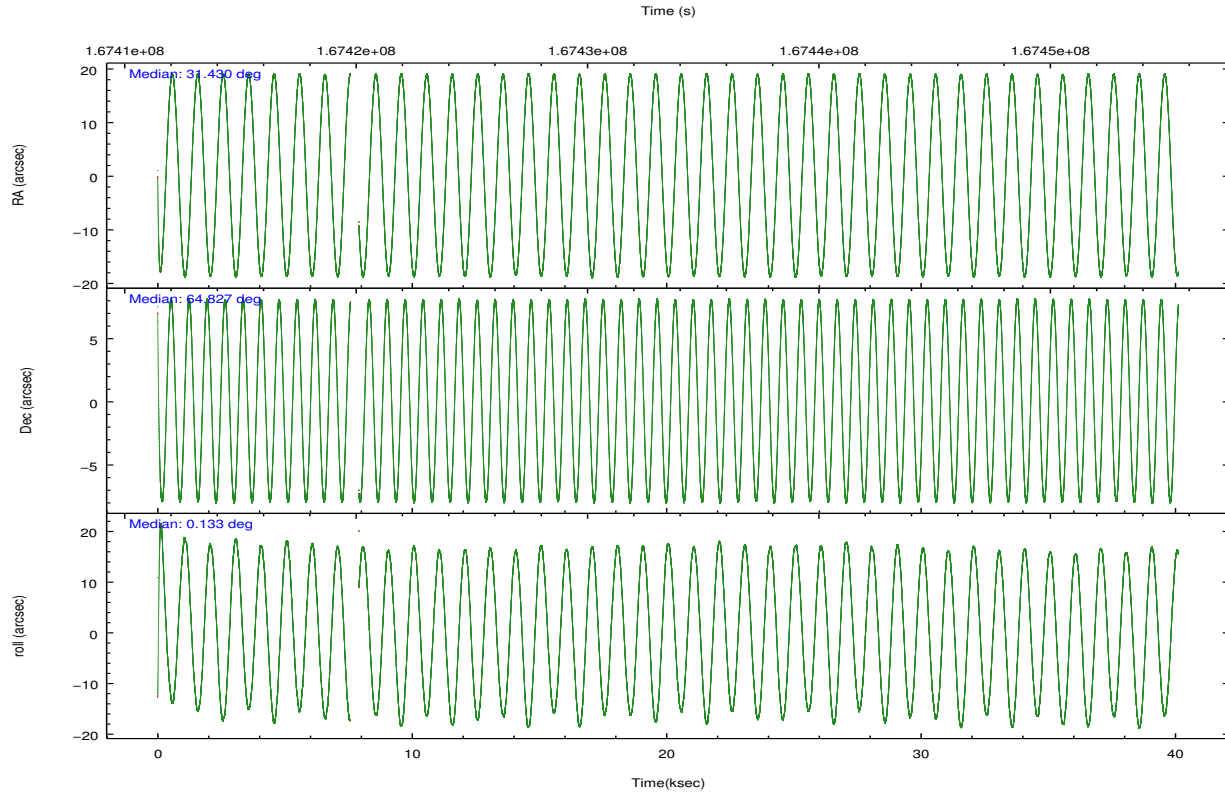
	ccd 5	ccd 6	ccd 7
level 1 events	252032	175111	294035
rejected events	109406	129101	104392
rejected %	43%	73%	35%

	ccd 5	ccd 6	ccd 7
grade 0 events	34863	29171	33297
	13%	16%	11%
grade 1 events	302	91	206
	0%	0%	0%
grade 2 events	37968	6432	41720
	15%	3%	14%
grade 3 events	6455	2913	19456
	2%	1%	6%
grade 4 events	6239	2982	18755
	2%	1%	6%
grade 5 events	15390	5712	17325
	6%	3%	5%
grade 6 events	59926	4939	78812
	23%	2%	26%
grade 7 events	90889	122871	84464
	36%	70%	28%

2.2 Compared Parameters

Parameter	Planned	Actual	Parameter	Planned	Actual
Instrument	ACIS	ACIS	Obspar format version number	7	7
Detector	ACIS-567	ACIS-567	Obspar file type	PREDICTED	ACTUAL
Grating	NONE	NONE	Obspar update status	NONE	UPDATED
Data mode	VFAINT	VFAINT	Number of optional ACIS chips dropped	0	0
Observation mode	POINTING	POINTING	On-chip summing requested	N	N
[deg] Pointing RA	31.375414	31.43023747756945	Subarray requested	CUSTOM	1/2
[deg] Pointing Dec	64.812603	64.82658712472727	Subarray start row	257	257
[deg] Pointing Roll	0.029410	0.1364183493853218	Subarray row count	512	512
[mm] SIM focus pos	-0.684267	-0.6828225247311905	Alternating exposures requested	N	N
[mm] SIM defocus	0	0.001444936568705701	[s] Primary exposure time	0.000000	1.6
[mm] SIM translation stage pos	-190.132523	-190.145094680475			
[mm] SIM translation stage offset	0	0.01257209746719923			
[s] Observation start time (MET)	167413585.184000	167412403.41033			
Observation start date	2003-04-22T15:45:21	2003-04-22T15:26:43			
[s] Observation end time (MET)	167453540.184000	167453854.41208			
Observation end date	2003-04-23T02:51:16	2003-04-23T02:57:34			
Read mode	TIMED	TIMED			

2.3 Aspect

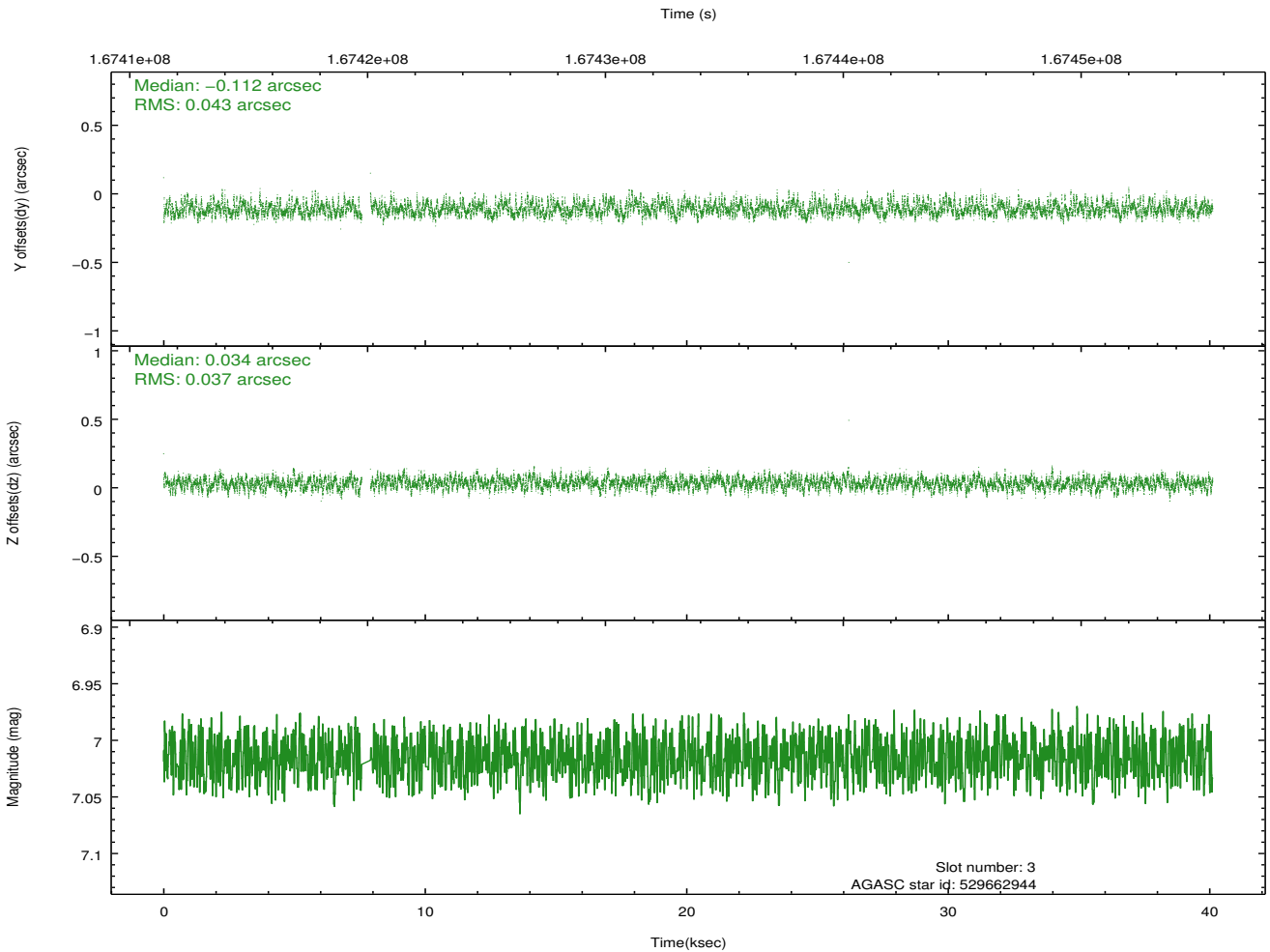
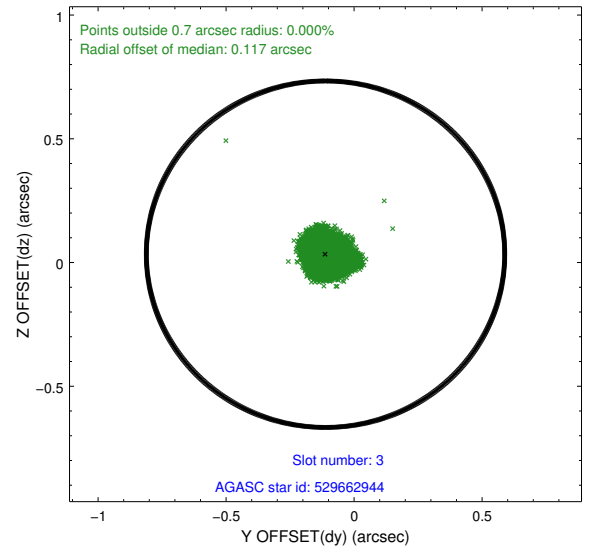
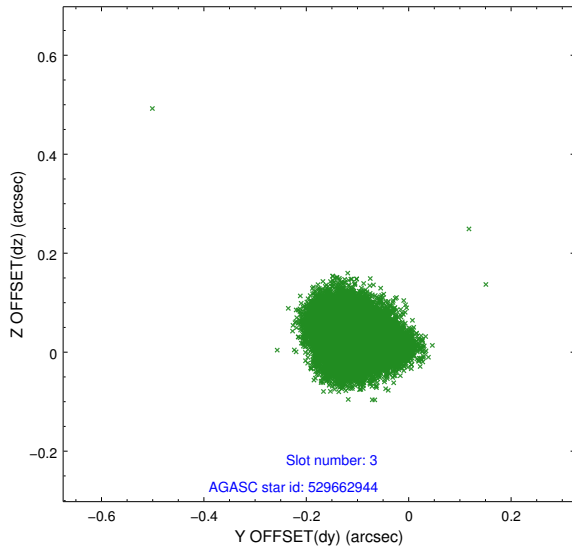


Slot Statistics

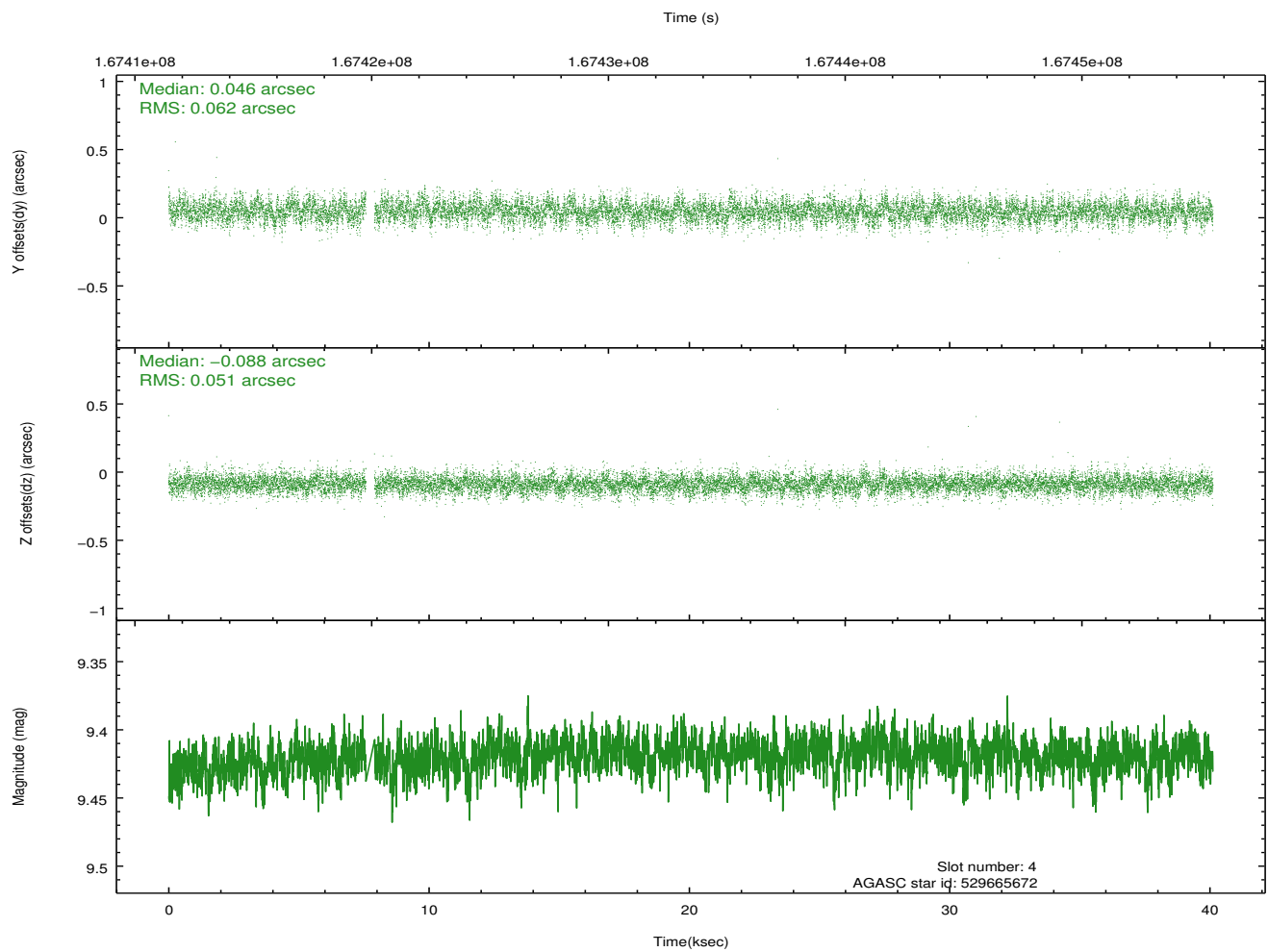
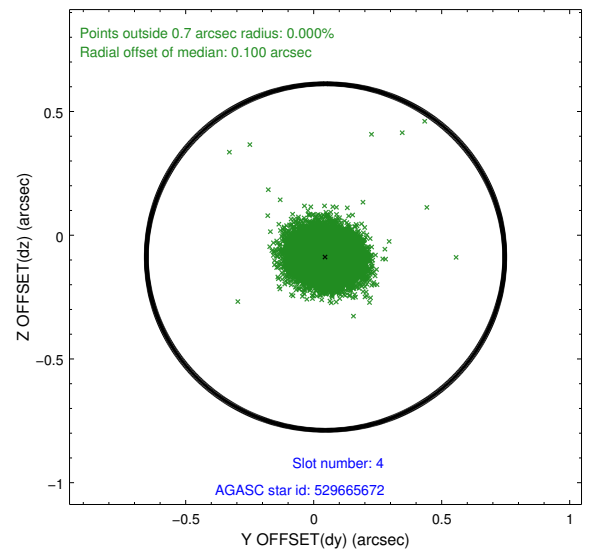
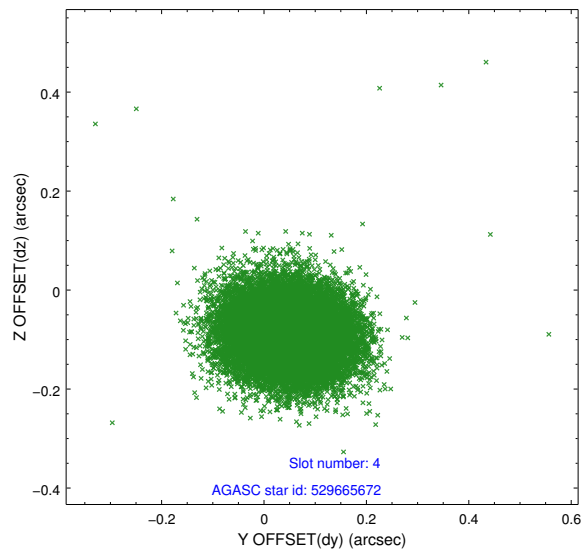
slot	status	id	mag	n_pts	med_dy	med_dz	dr1	dr2	ra	dec	mean_y	mean_z
0	FID	ACIS-S-1	7.19	9673	0.015	0.023	0.010	0.027	0.000000	0.000000	940.72	-1725.71
1	FID	ACIS-S-5	7.24	9669	-0.020	0.030	0.013	0.021	0.000000	0.000000	-1808.31	171.84
2	FID	ACIS-S-6	7.35	9671	-0.018	-0.042	0.009	0.014	0.000000	0.000000	406.22	815.75
3	GUIDE	529662944	7.01	19368	-0.112	0.034	0.061	0.095	31.166392	65.103499	-315.96	1048.09
4	GUIDE	529665672	9.42	19360	0.046	-0.088	0.084	0.139	32.707839	64.829181	2040.36	80.44
5	GUIDE	529668264	9.28	19285	0.051	0.074	0.070	0.116	31.791992	64.625937	642.95	-669.94
6	GUIDE	529670336	8.53	19359	0.052	-0.023	0.063	0.101	31.583988	64.608918	322.09	-732.71
7	GUIDE	529673088	8.83	19352	-0.041	0.005	0.070	0.113	30.560791	64.638256	-1256.04	-618.82

2.4 Star Slots

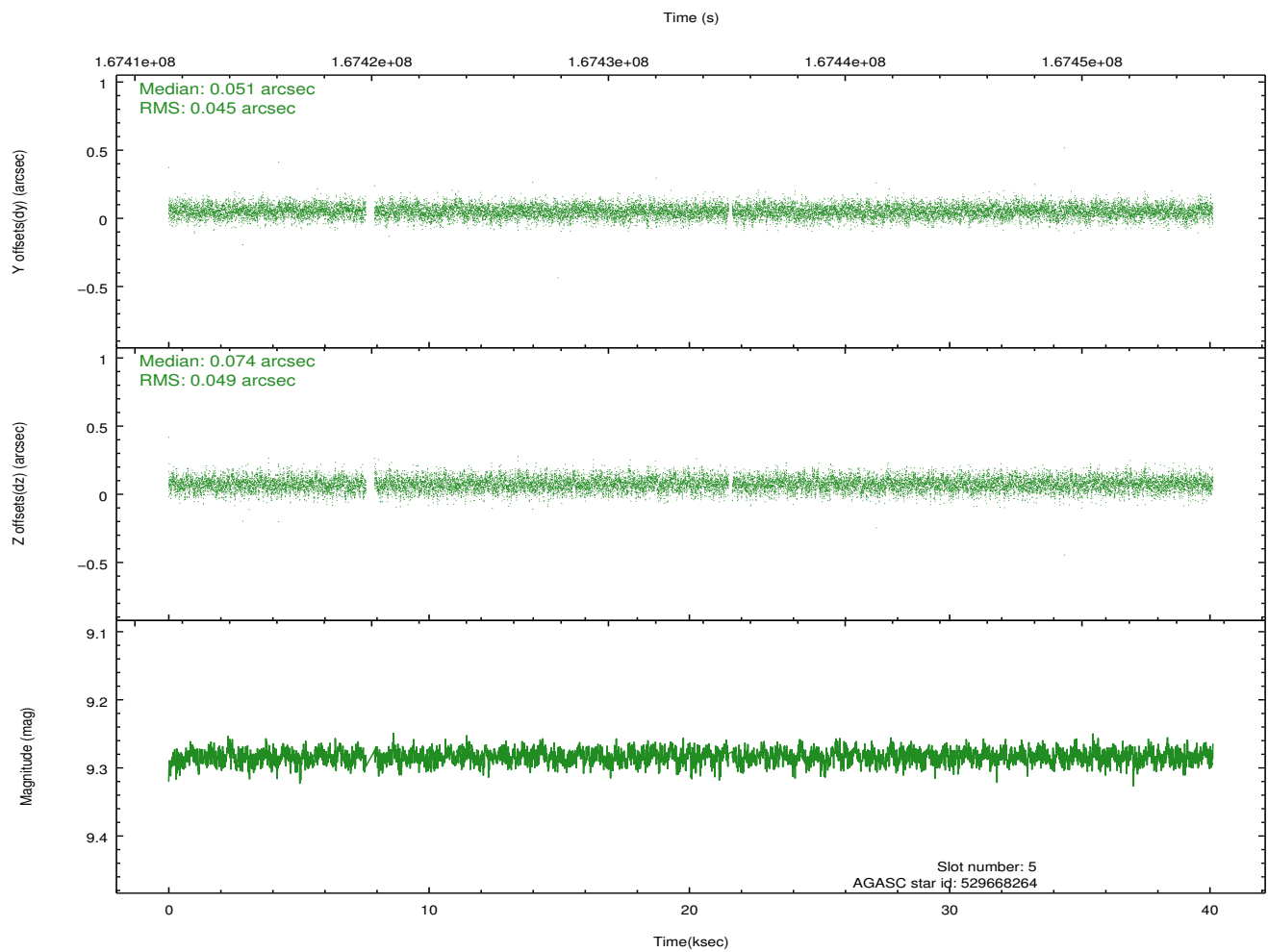
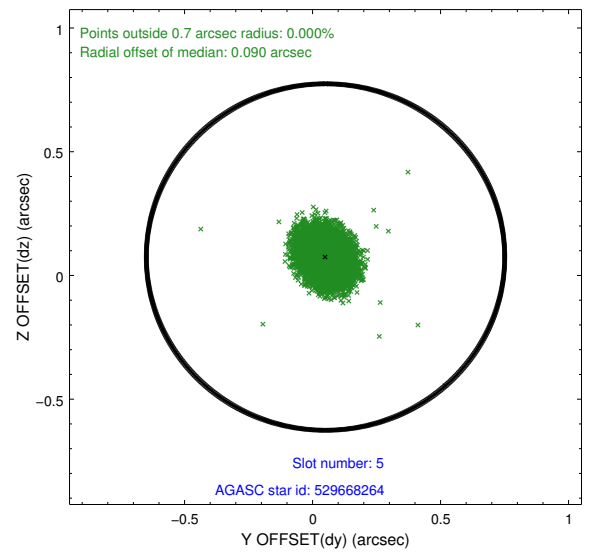
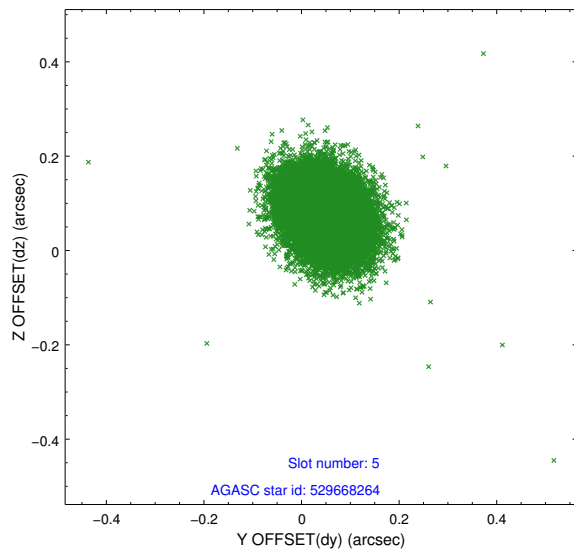
2.4.1 Slot 3



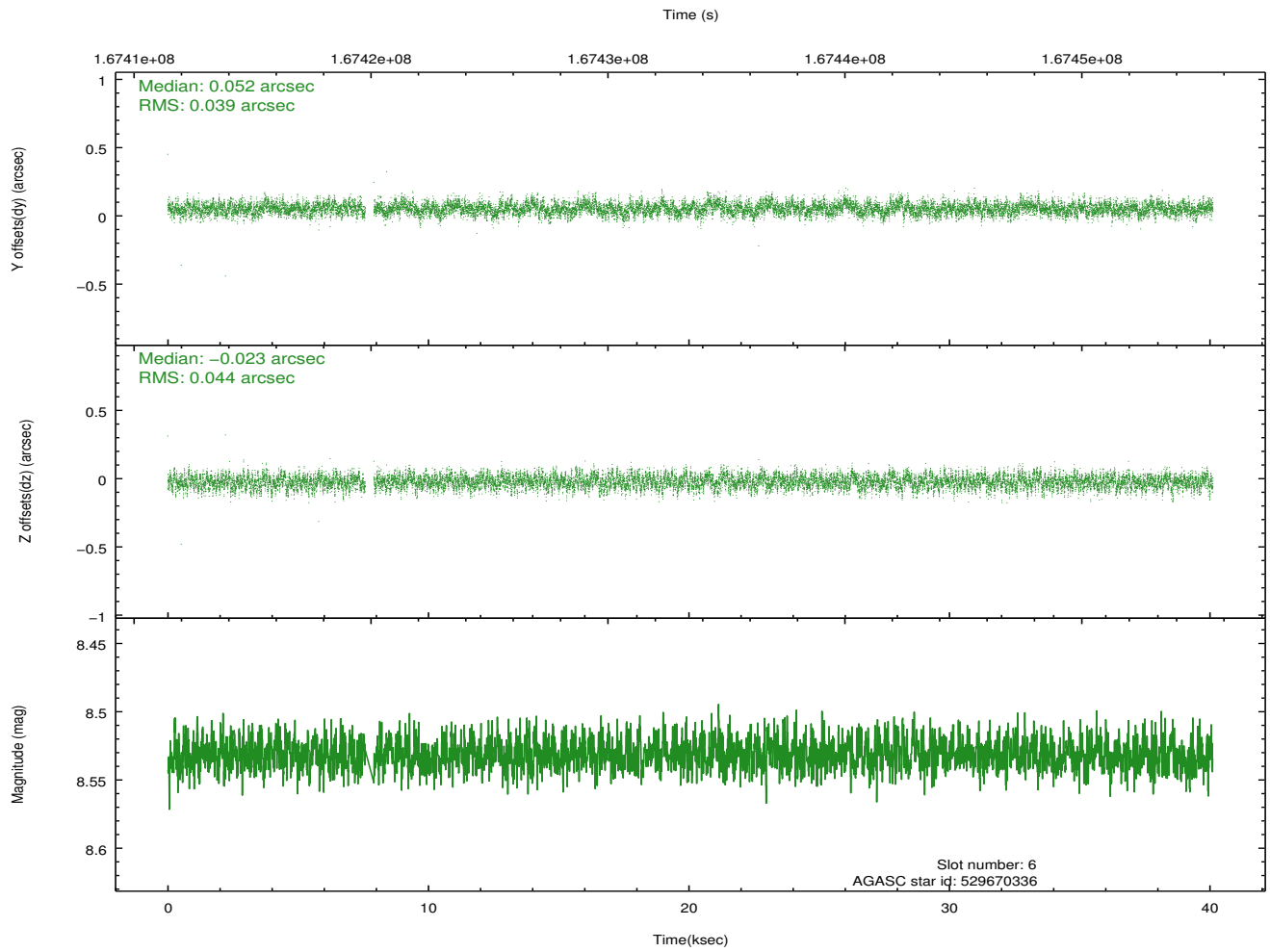
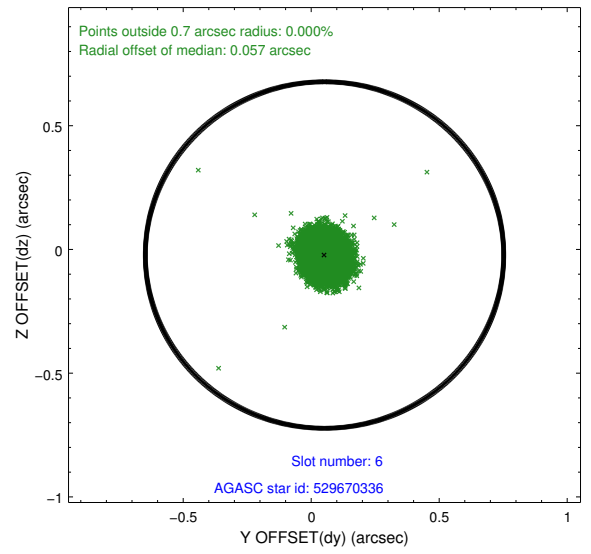
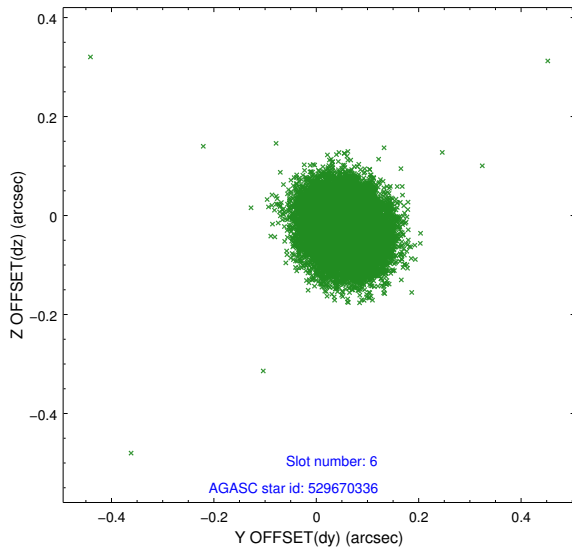
2.4.2 Slot 4



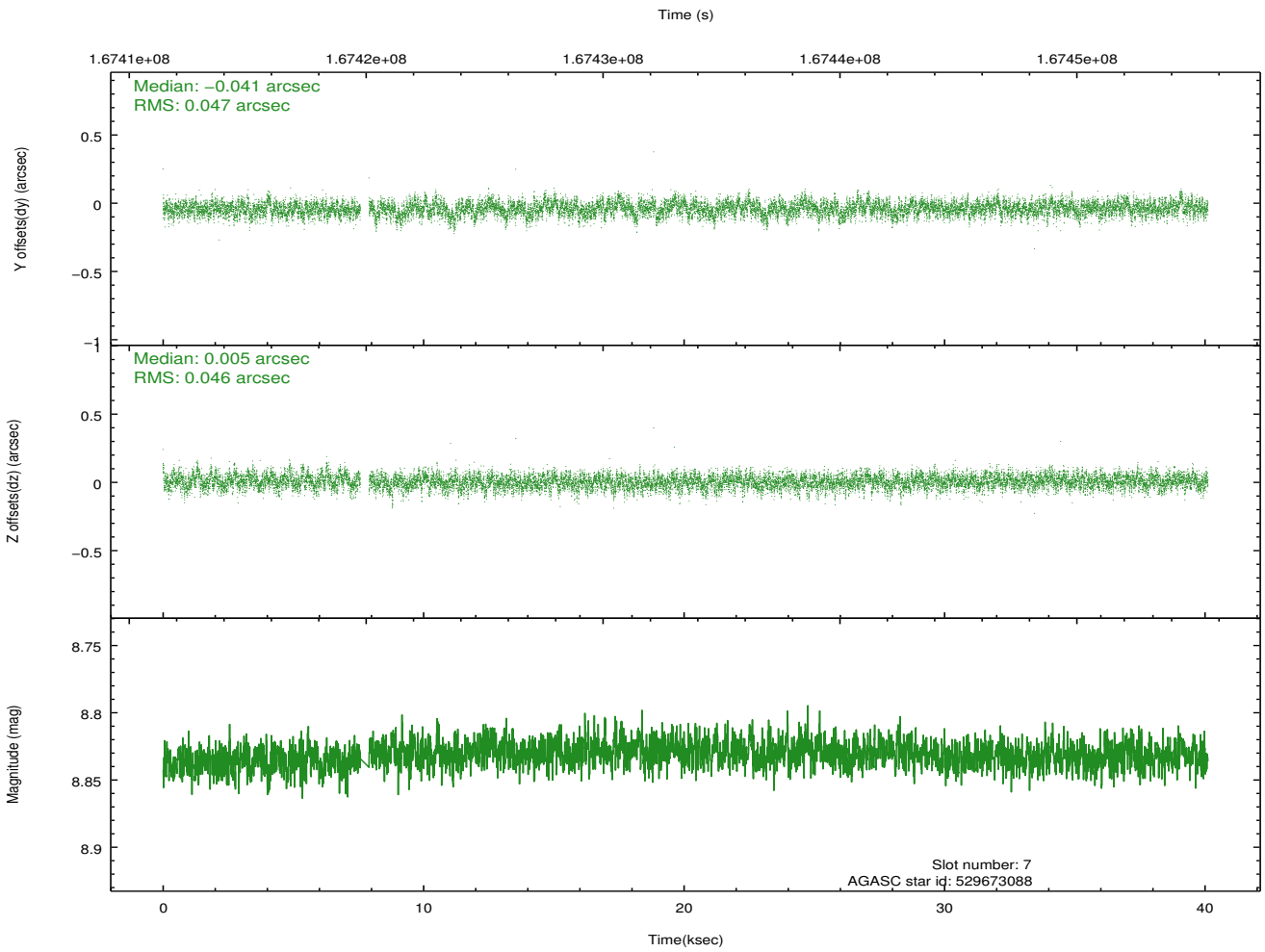
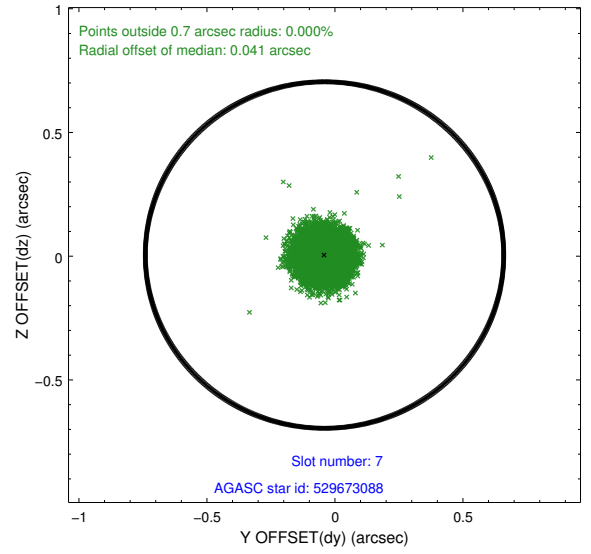
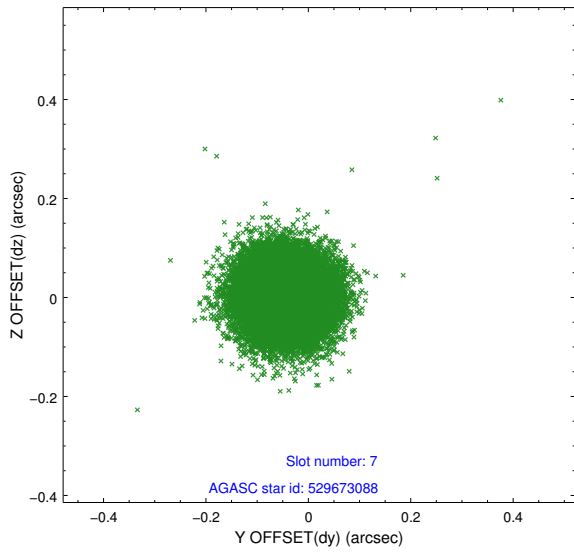
2.4.3 Slot 5



2.4.4 Slot 6

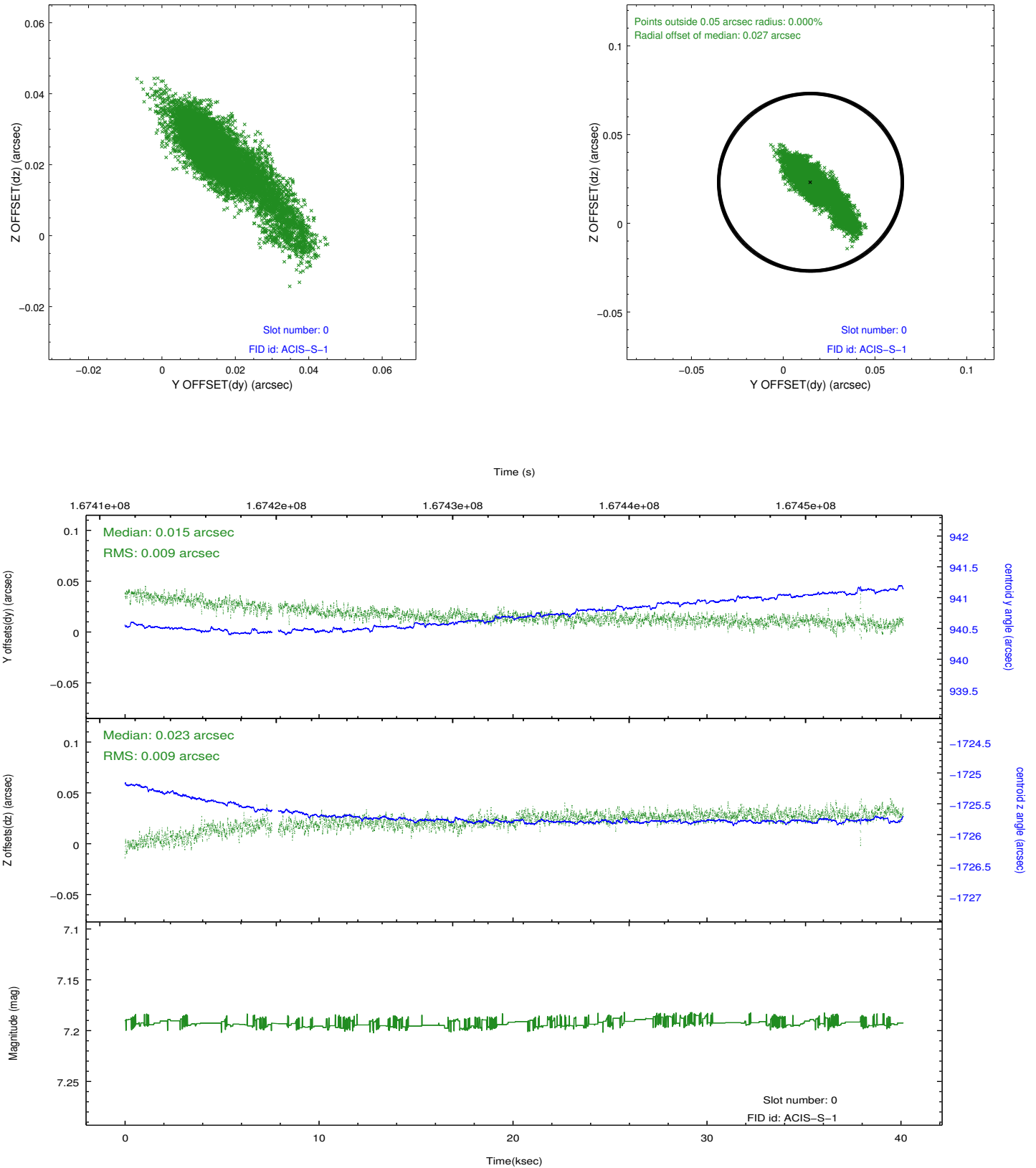


2.4.5 Slot 7

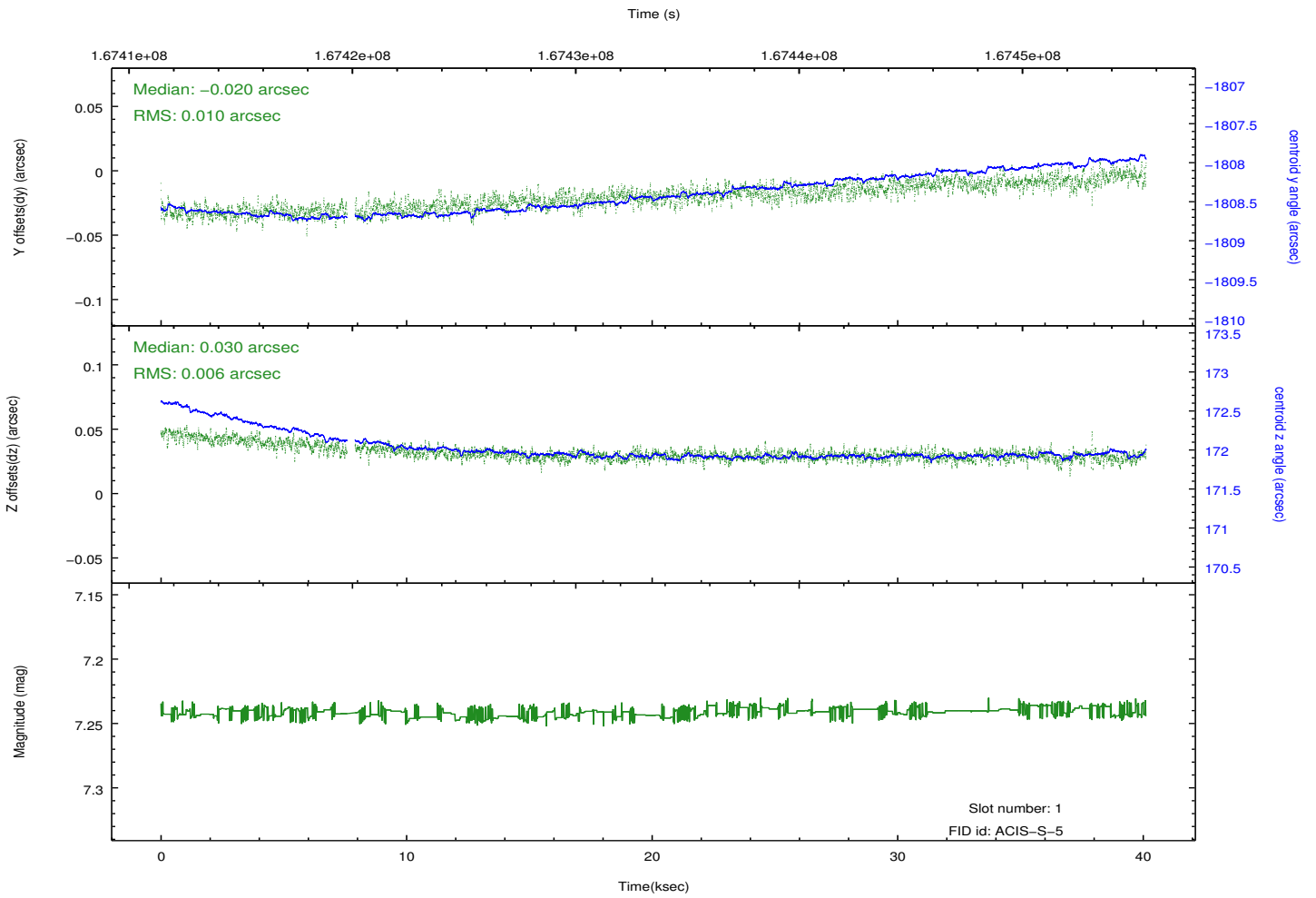
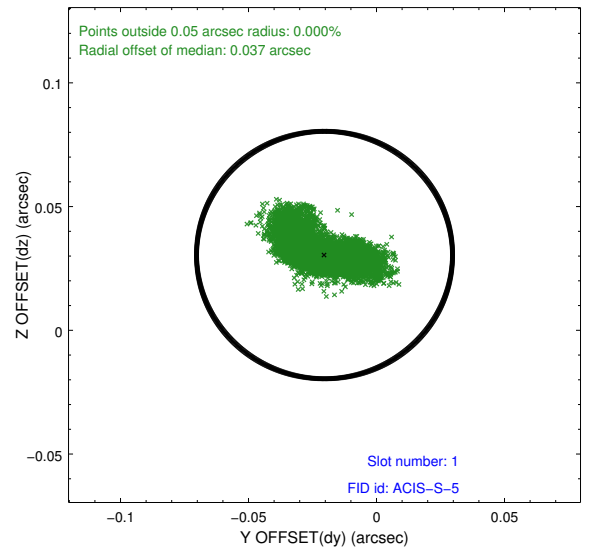
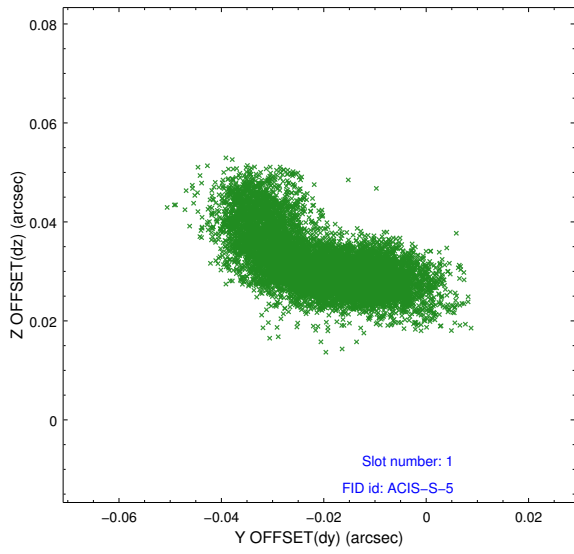


2.5 FID Slots

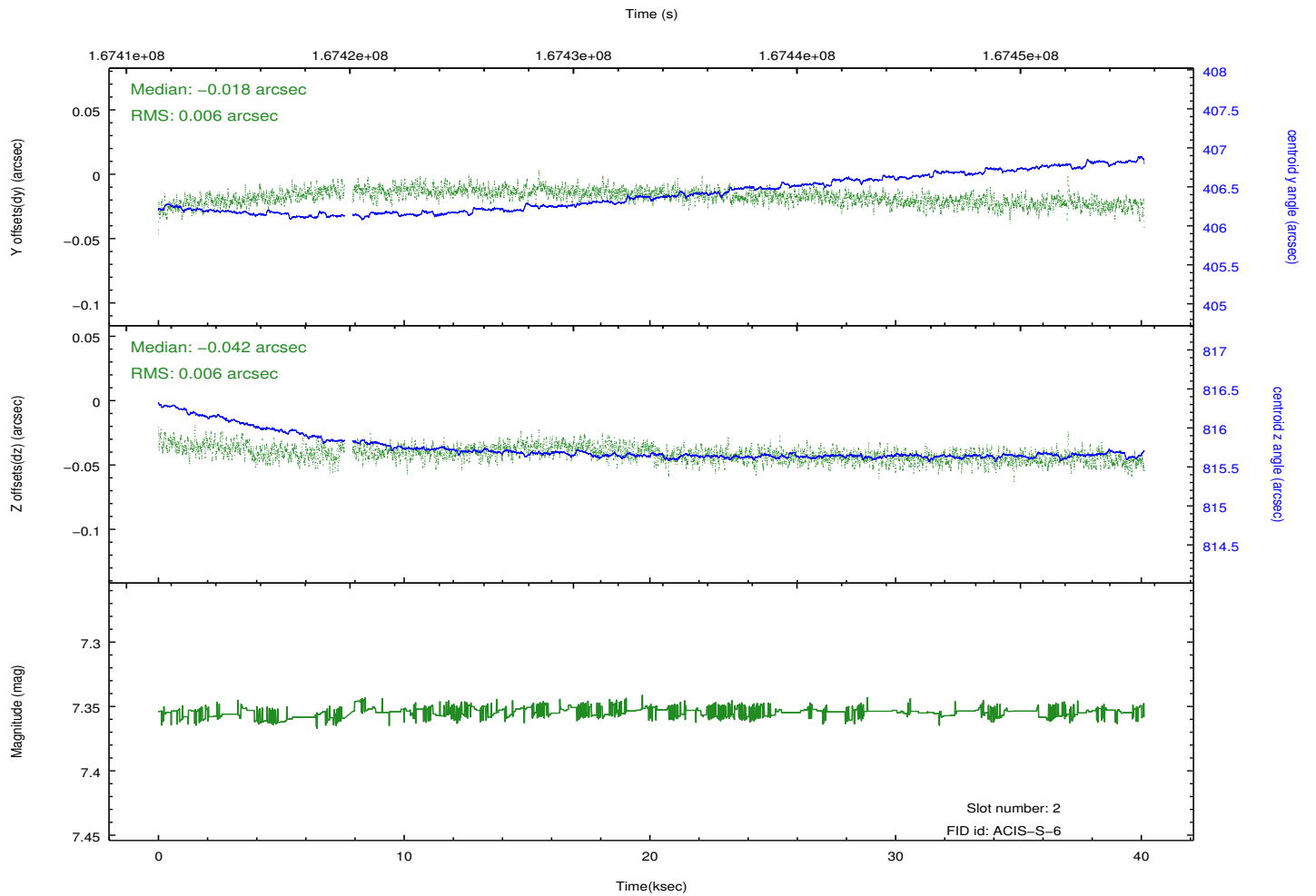
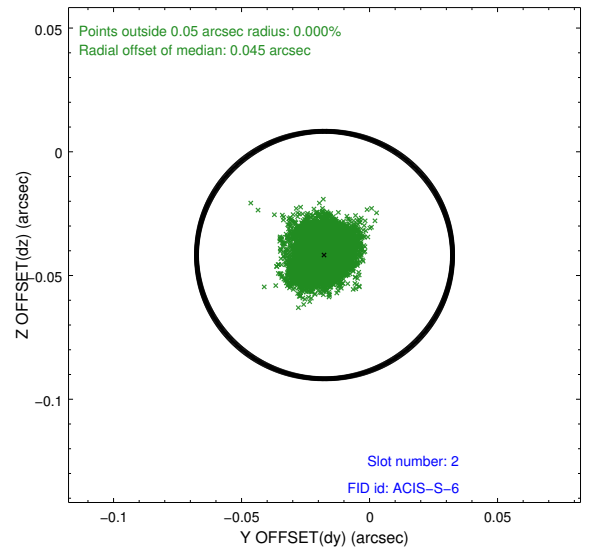
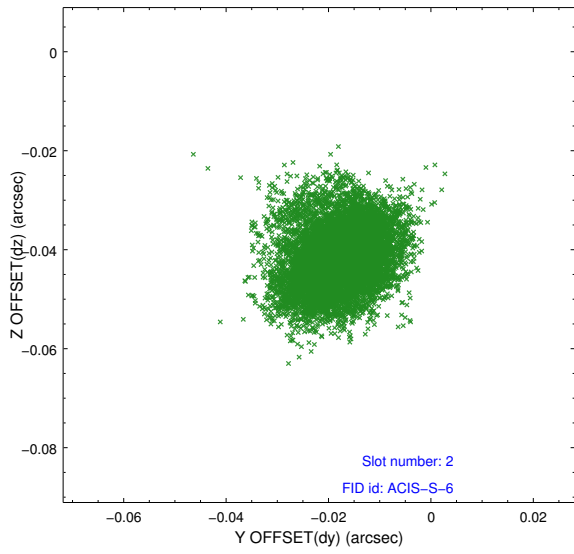
2.5.1 Slot 0



2.5.2 Slot 1



2.5.3 Slot 2



A Summary

A.1 Status

V&V Scientist	Joy Nichols
V&V Date (YYYY-MM-DD)	2013.01.29
V&V Edition	1
V&V Disposition and Status	OK
V&V Charge Time	39.716

A.2 Comments

Gap in aspect data of 1800 s starting about 7 ksec into the observation. The data are non-recoverable. Event data during this gap in the pointing data are not marked as GTI. There are also multiple short periods of non-GTI data during the first half of the observations.