

V&V Reference Report

L2 ASCDS Version : 8.4.5

Observation 4393 - L2 Version 3
Chandra X-Ray Center

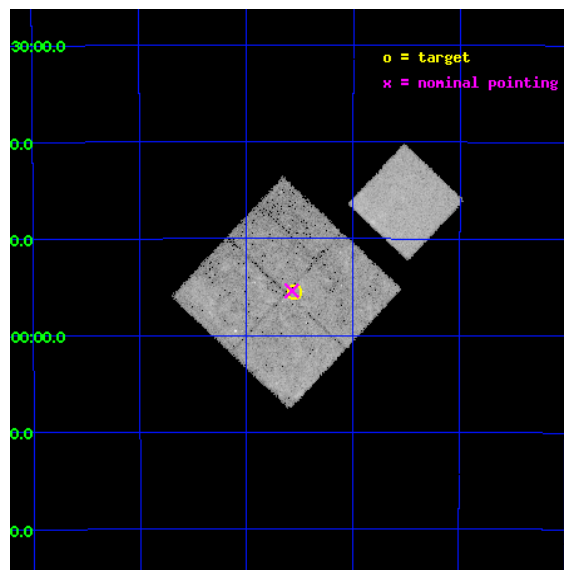
L2 Processing Date : Oct 26 2012

Contents

1	Front	2
2	OBI	3
2.1	OBI	3
2.1.1	Images	3
2.1.2	Bias	3
2.1.3	Parameters	4
2.1.4	Events	4
2.2	Compared Parameters	5
2.3	Aspect	6
2.4	Star Slots	9
2.4.1	Slot 3	9
2.4.2	Slot 4	10
2.4.3	Slot 5	11
2.4.4	Slot 6	12
2.4.5	Slot 7	13
2.5	FID Slots	14
2.5.1	Slot 0	14
2.5.2	Slot 1	15
2.5.3	Slot 2	16
A	Summary	17
A.1	Status	17
A.2	Comments	17

1 Front

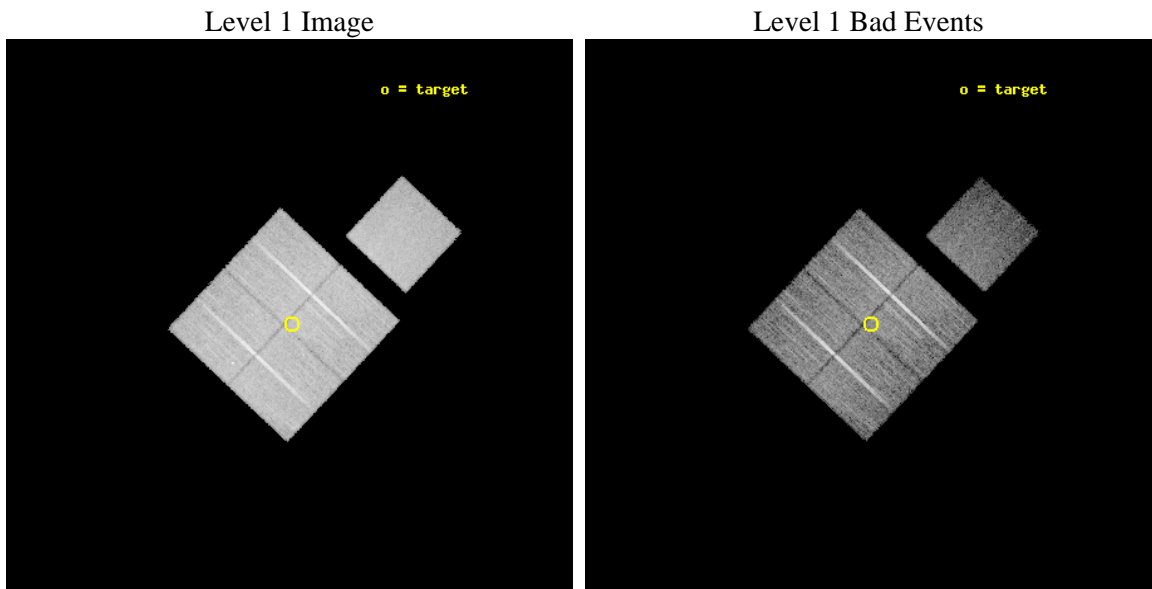
seq_num	500317	Sequence number
obs_id	4393	Observation id
title	STUDYING HIGH MACH NUMBER SHOCKS IN YOUNG SUPERNOVA REMNANTS WITH CHANDRA	Proposal title
observer	Prof. John Hughes	Principal investigator
object	SN1006	Source name
dtcycle	0	
cycle	P	events from which exps? Prim/Second/Both
ra_targ	225.6375	Observer's specified target RA [deg]
dec_targ	-41.925	Observer's specified target Dec [deg]
ra_nom	225.64334367652	Nominal RA [deg]
dec_nom	-41.923409845862	Nominal Dec [deg]
roll_nom	43.212597098256	Nominal Roll [deg]
revision	3	Processing version of data
ontime	19849.080861509	Sum of GTIs [s]
livetime	19589.738007372	Livetime [s]
ontime0	19845.816731364	Sum of GTIs [s]
ontime1	19848.998761594	Sum of GTIs [s]
ontime2	19849.039821506	Sum of GTIs [s]
ontime3	19849.080861509	Sum of GTIs [s]
ontime7	19849.121881604	Sum of GTIs [s]
l2events	141425	Number of level 2 events



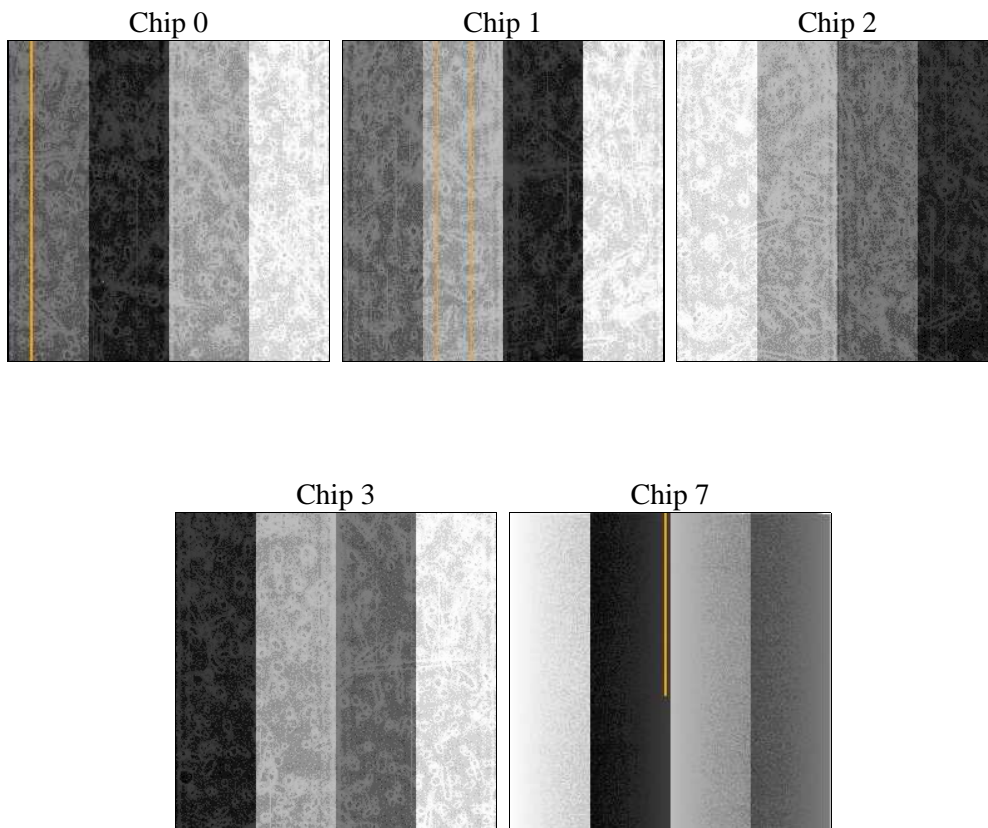
2 OBI

2.1 OBI

2.1.1 Images



2.1.2 Bias



2.1.3 Parameters

obi_num	0	Obi number	sched_exp_time	20074.000000	[s] Scheduled observation exposure time
ascdsver	8.4.5	Processing system revision	ontime	19849.080861509	Sum of GTIs [s]
caldbver	4.5.2	 	ontime0	19845.816731364	Sum of GTIs [s]
date	2012-10-26T12:33:21	Date and time of file creation	ontime1	19848.998761594	Sum of GTIs [s]
revision	3	Processing version of data	ontime2	19849.039821506	Sum of GTIs [s]
			ontime3	19849.080861509	Sum of GTIs [s]
			ontime7	19849.121881604	Sum of GTIs [s]
			l1events	534530	Number of level 1 events

2.1.4 Events

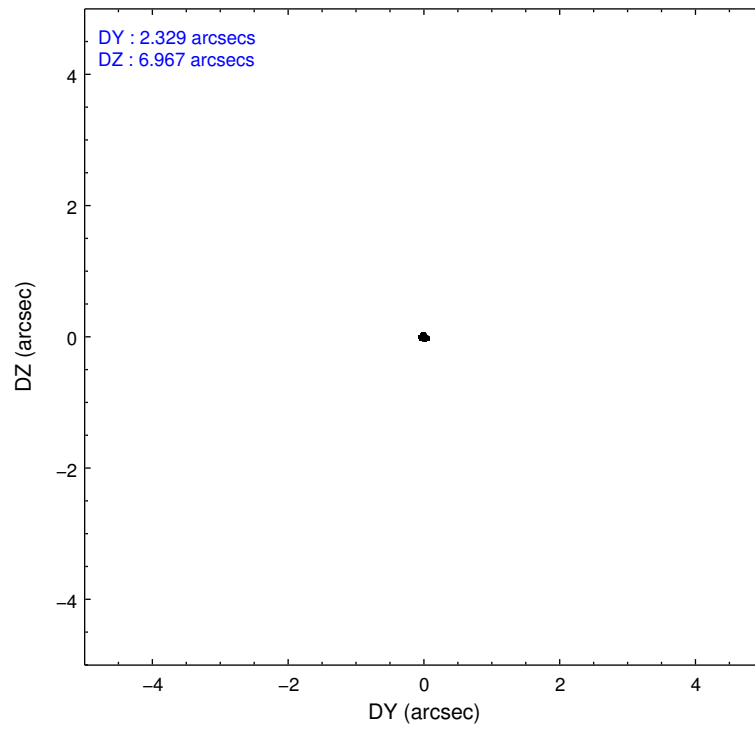
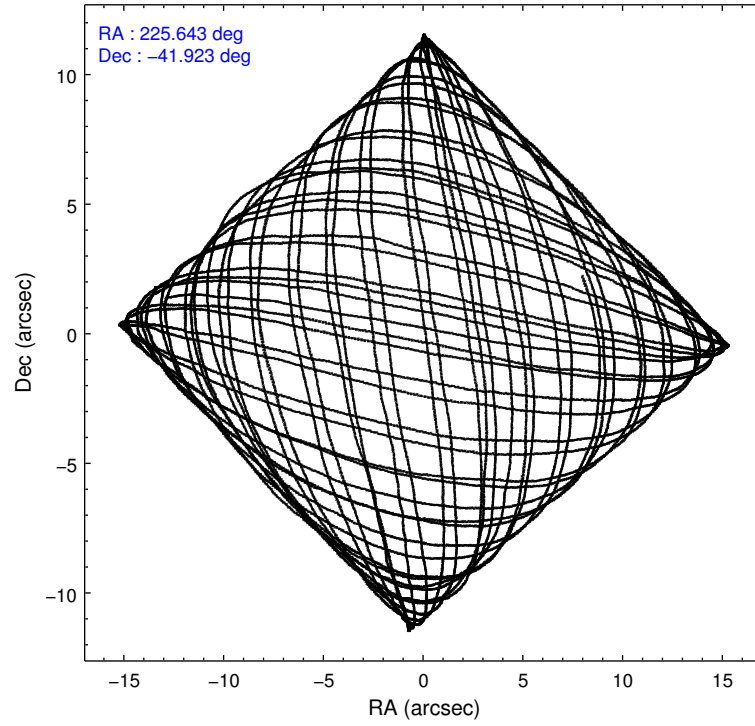
	ccd 0	ccd 1	ccd 2	ccd 3	ccd 7
level 1 events	108701	111851	109310	112622	92046
rejected events	80624	79482	88525	86565	47155
rejected %	74%	71%	80%	76%	51%

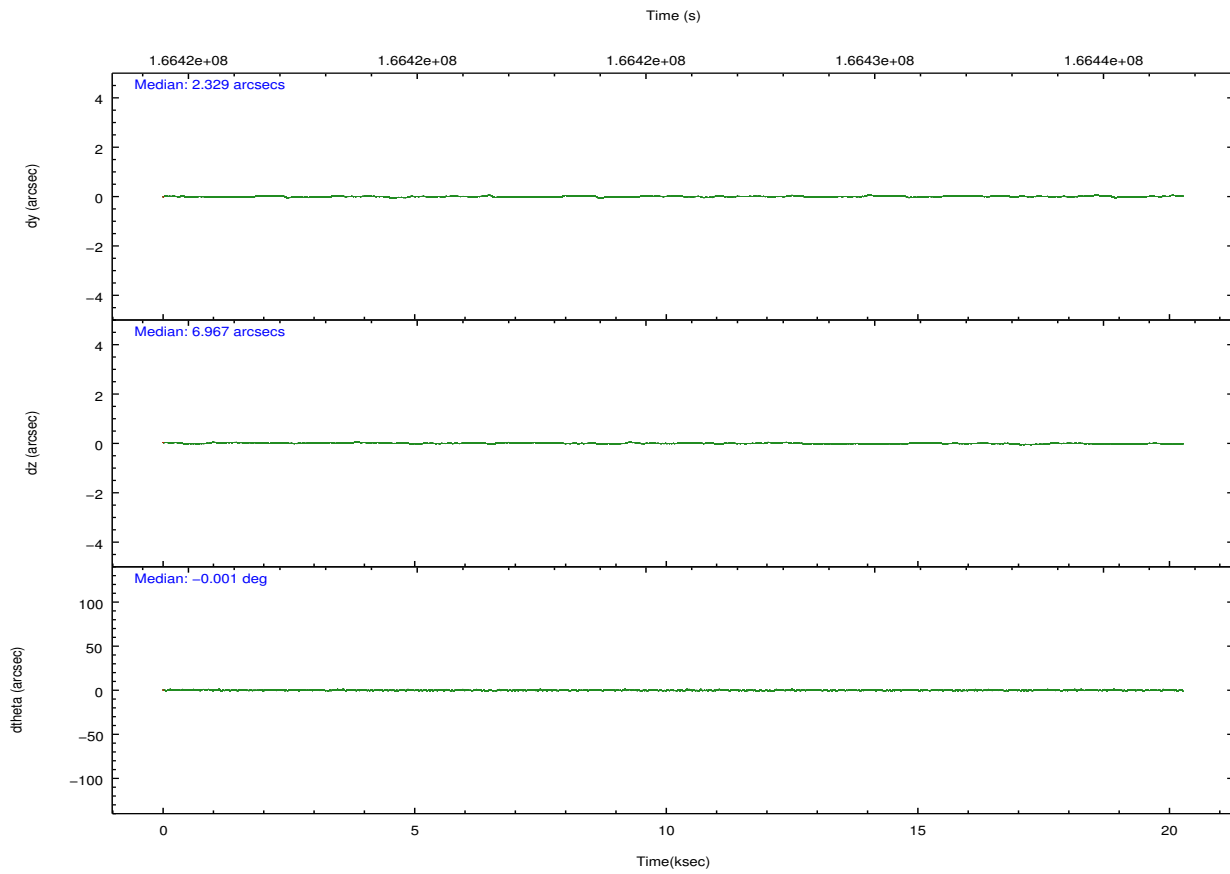
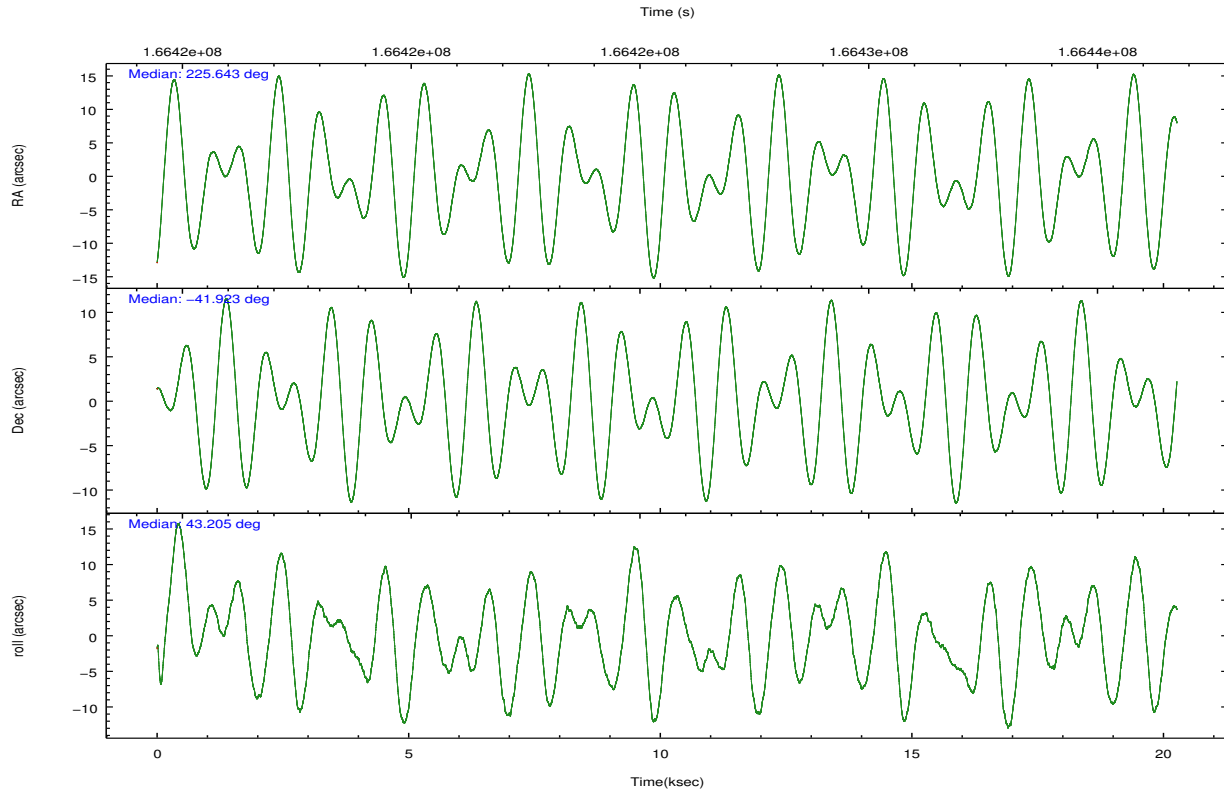
	ccd 0	ccd 1	ccd 2	ccd 3	ccd 7
grade 0 events	20271	23611	14131	18698	5036
	18%	21%	12%	16%	5%
grade 1 events	88	96	83	113	90
	0%	0%	0%	0%	0%
grade 2 events	3350	3606	2699	3053	8897
	3%	3%	2%	2%	9%
grade 3 events	1329	1524	1165	1223	4226
	1%	1%	1%	1%	4%
grade 4 events	1251	1466	1148	1260	4207
	1%	1%	1%	1%	4%
grade 5 events	2930	3123	2785	3360	9880
	2%	2%	2%	2%	10%
grade 6 events	1881	2171	1653	1828	22544
	1%	1%	1%	1%	24%
grade 7 events	77601	76254	85646	83087	37166
	71%	68%	78%	73%	40%

2.2 Compared Parameters

Parameter	Planned	Actual	Parameter	Planned	Actual
Instrument	ACIS	ACIS	Obspar format version number	7	7
Detector	ACIS-01237	ACIS-01237	Obspar file type	PREDICTED	ACTUAL
Grating	NONE	NONE	Obspar update status	NONE	UPDATED
Data mode	VFAINT	VFAINT	Number of optional ACIS chips dropped	0	0
Observation mode	POINTING	POINTING	On-chip summing requested	N	N
[deg] Pointing RA	225.632851	225.6433436765242	Subarray requested	NONE	NONE
[deg] Pointing Dec	-41.949639	-41.92340984586217	Alternating exposures requested	N	N
[deg] Pointing Roll	42.996888	43.21259709825601	[s] Primary exposure time	0.000000	3.1
[mm] SIM focus pos	-0.782348	-0.7809083437167272			
[mm] SIM defocus	0	0.001439871863259334			
[mm] SIM translation stage pos	-233.592463	-233.5874344608287			
[mm] SIM translation stage offset	0	-0.005018542100998502			
[s] Observation start time (MET)	166415649.184000	166415273.11818			
Observation start date	2003-04-11T02:33:05	2003-04-11T02:27:53			
[s] Observation end time (MET)	166435723.184000	166435857.16905			
Observation end date	2003-04-11T08:07:39	2003-04-11T08:10:57			
Read mode	TIMED	TIMED			

2.3 Aspect



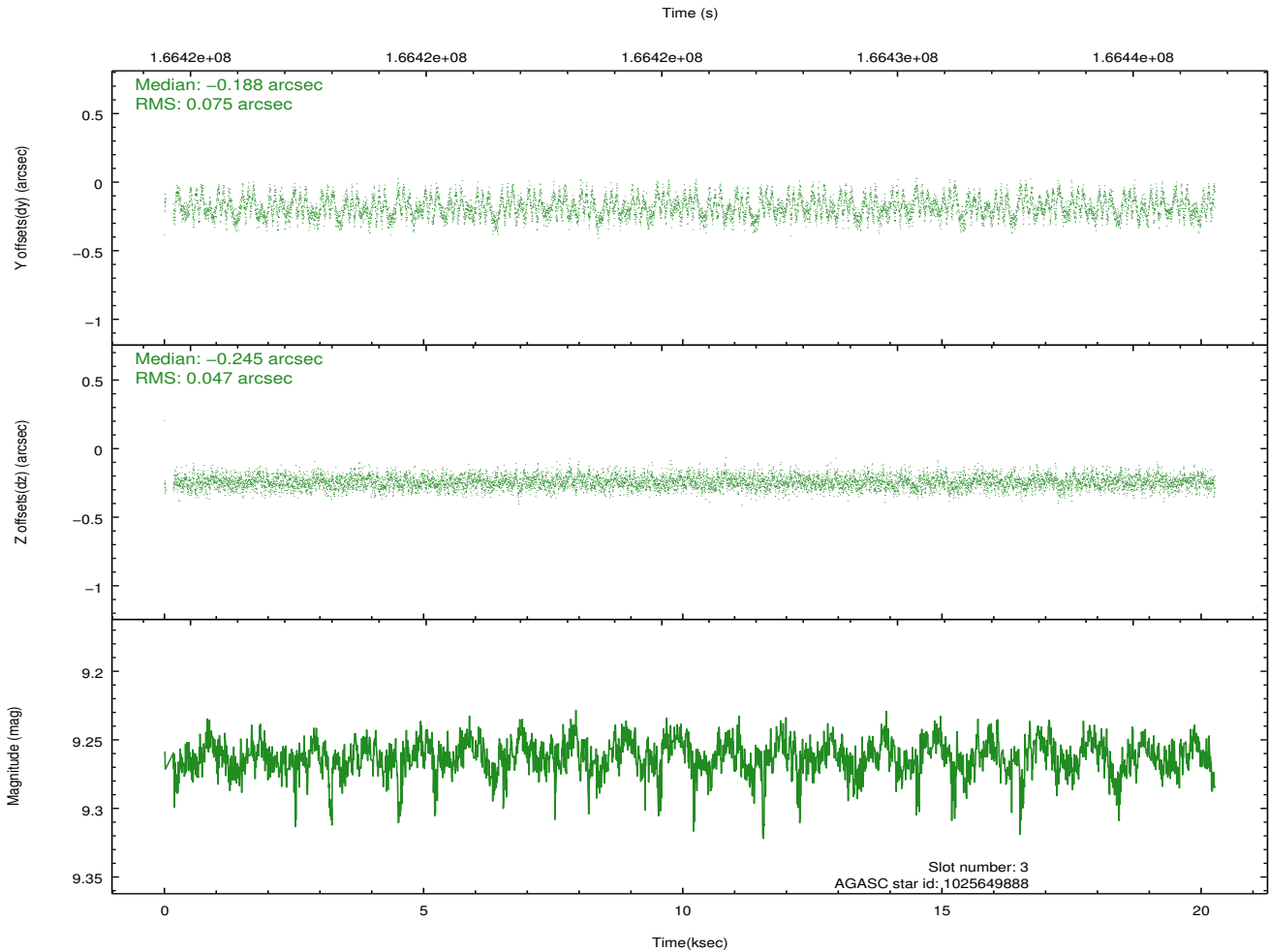
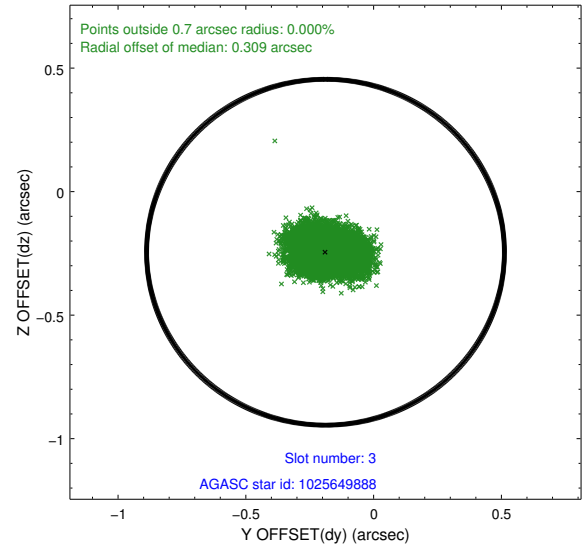
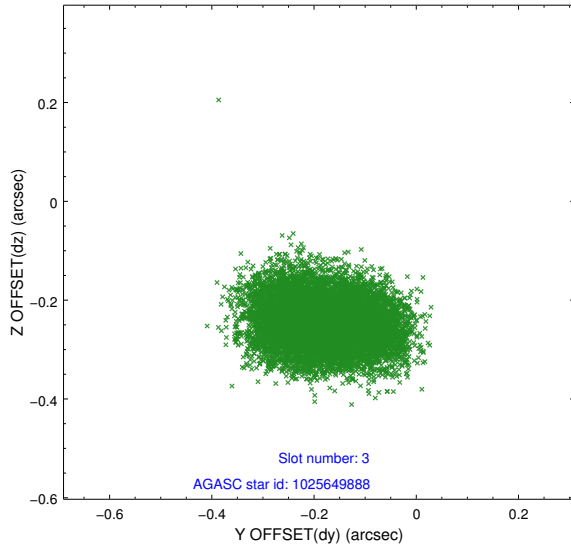


Slot Statistics

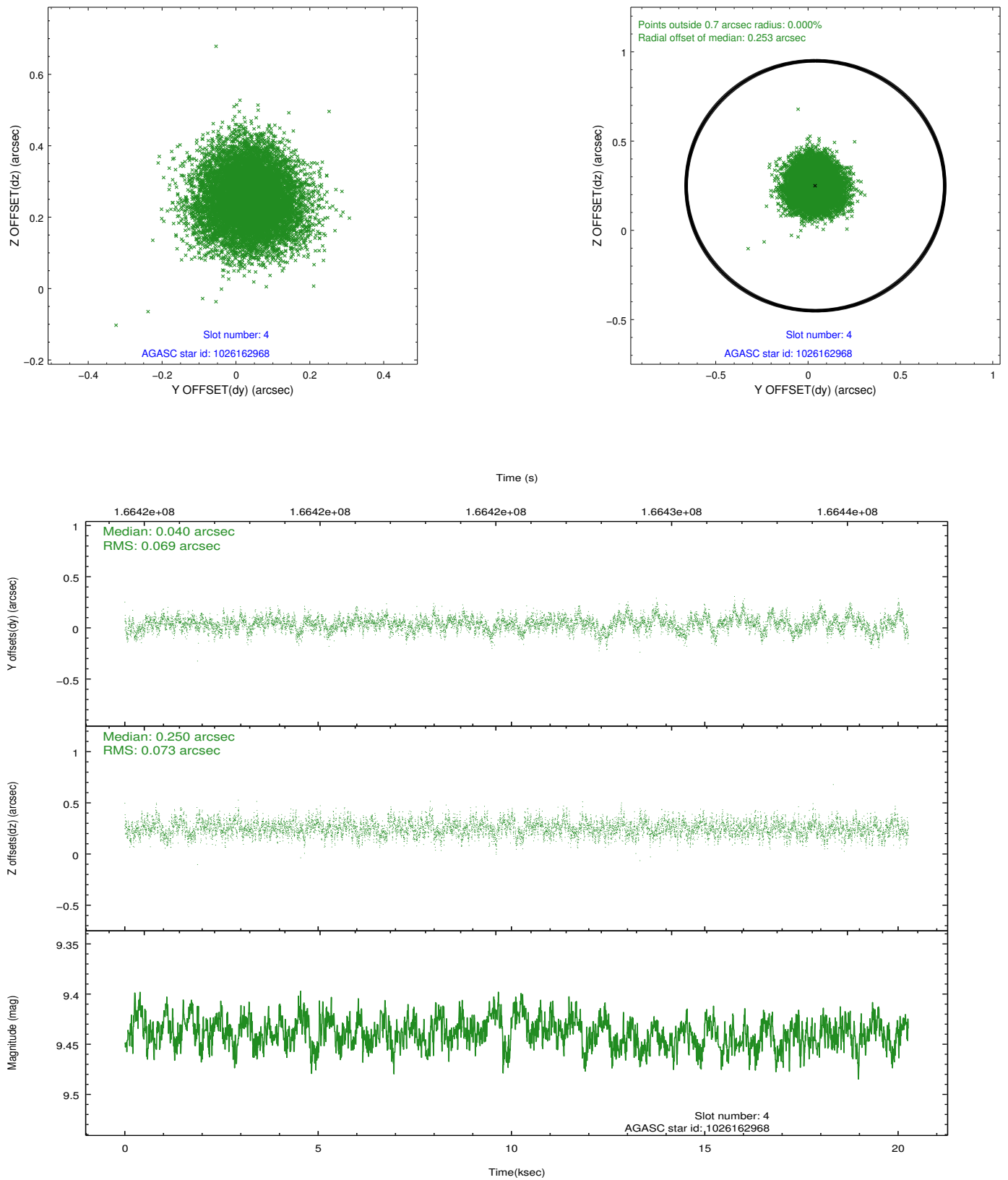
slot	status	id	mag	n_pts	med_dy	med_dz	dr1	dr2	ra	dec	mean_y	mean_z
0	FID	ACIS-I-1	7.25	4944	0.013	0.004	0.006	0.011	0.000000	0.000000	937.48	-830.37
1	FID	ACIS-I-5	7.24	4944	-0.077	0.056	0.006	0.011	0.000000	0.000000	-1810.58	1067.13
2	FID	ACIS-I-6	7.26	4943	-0.027	0.010	0.007	0.011	0.000000	0.000000	402.84	1711.75
3	GUIDE	1025649888	9.26	9814	-0.188	-0.245	0.095	0.151	225.540879	-41.189826	1682.92	2170.61
4	GUIDE	1026162968	9.44	9855	0.040	0.250	0.107	0.174	225.835985	-42.679852	-1399.22	-2289.45
5	GUIDE	1026163728	9.23	9878	-0.103	-0.068	0.078	0.127	225.377558	-41.568164	432.70	1472.42
6	GUIDE	1026170368	9.29	9878	0.094	0.030	0.084	0.136	225.763429	-42.291155	-583.68	-1136.37
7	GUIDE	1026170800	9.02	9878	0.157	0.029	0.065	0.106	225.400024	-42.381702	-1513.69	-716.23

2.4 Star Slots

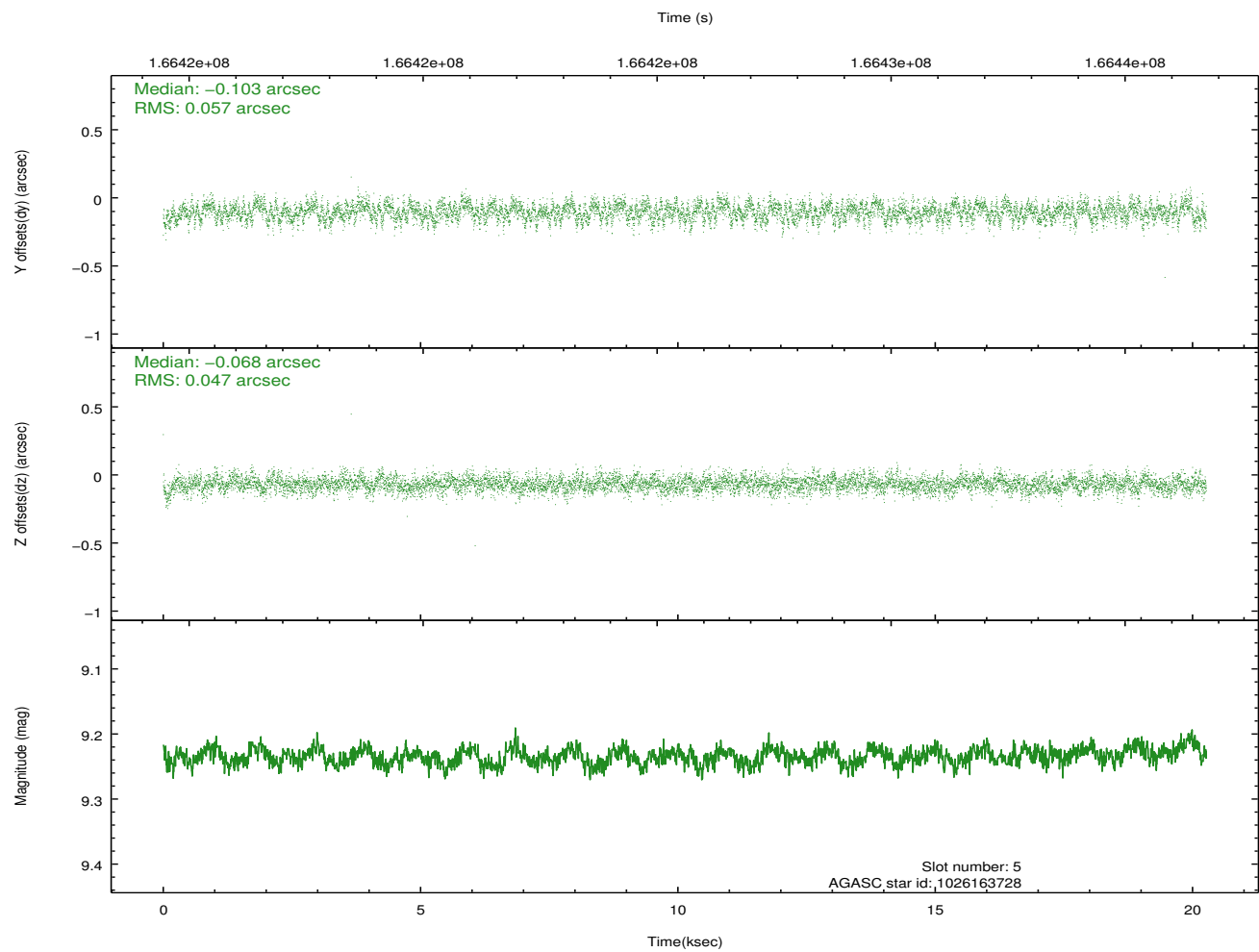
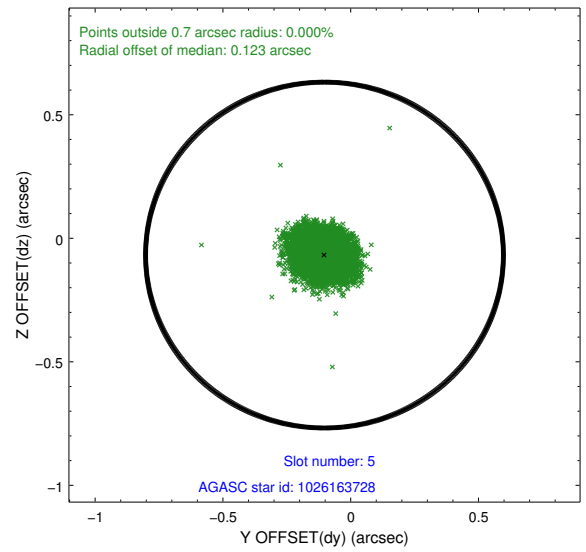
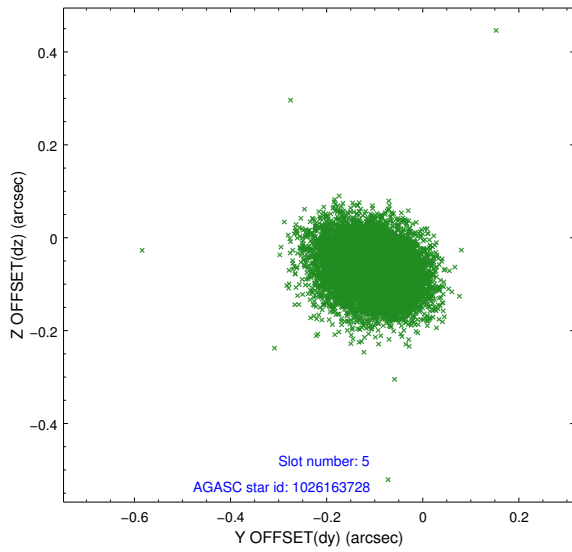
2.4.1 Slot 3



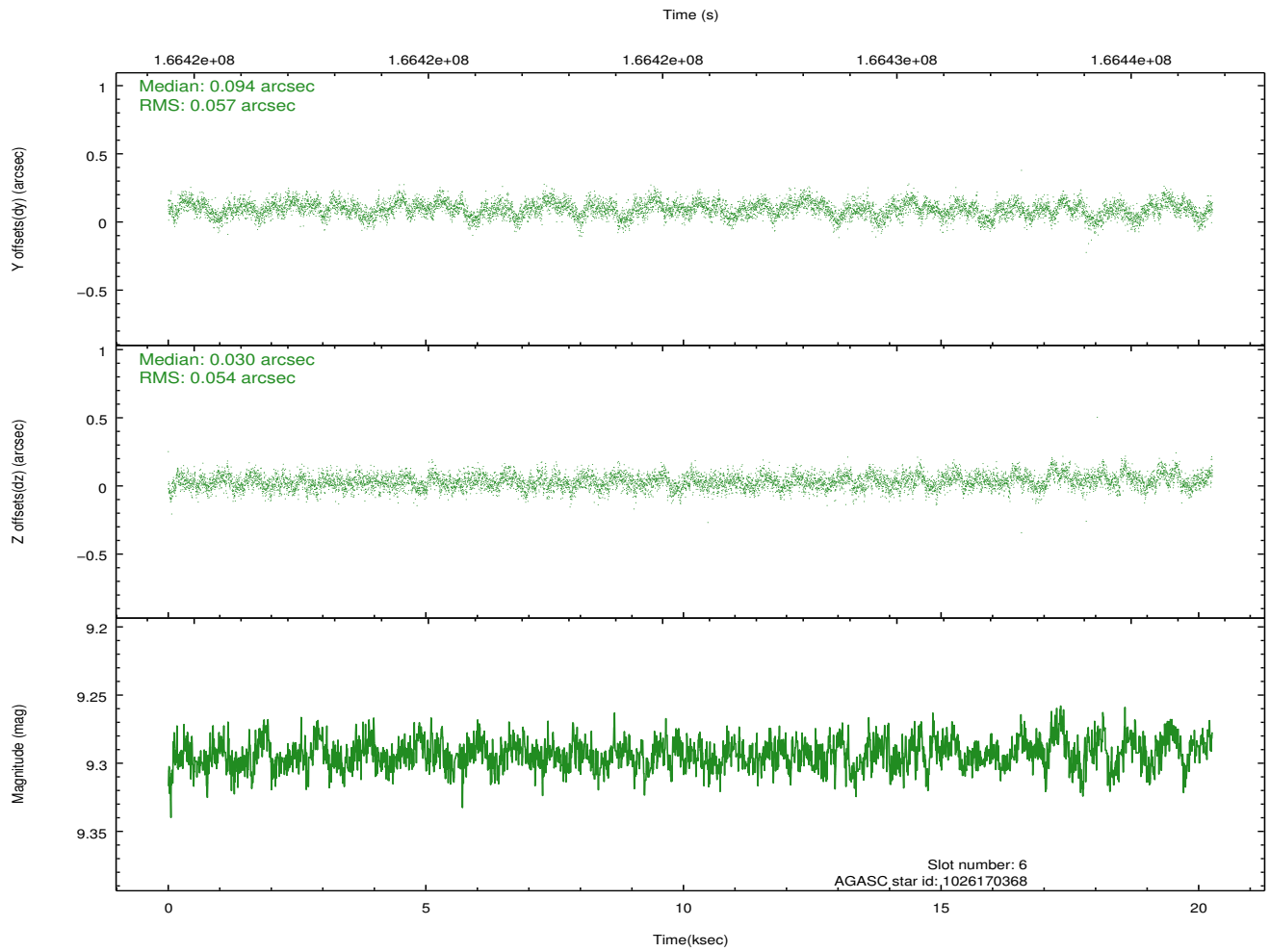
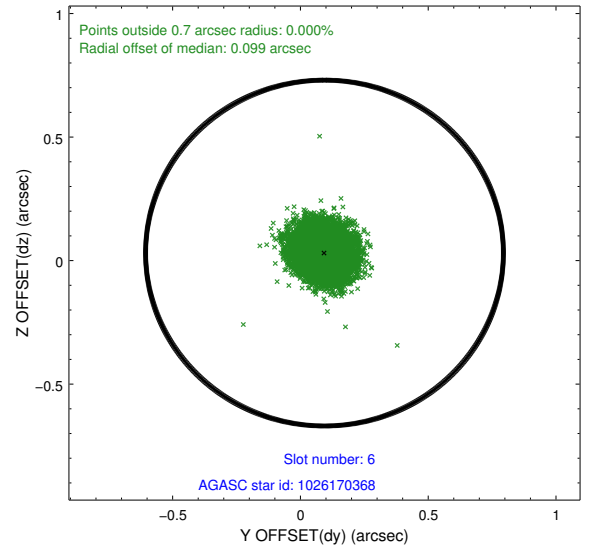
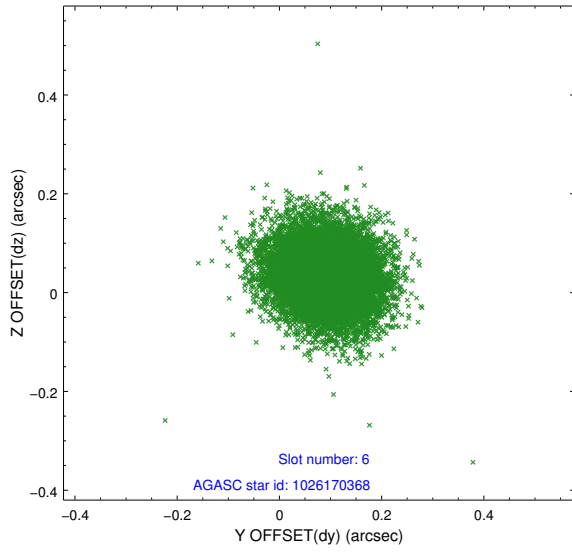
2.4.2 Slot 4



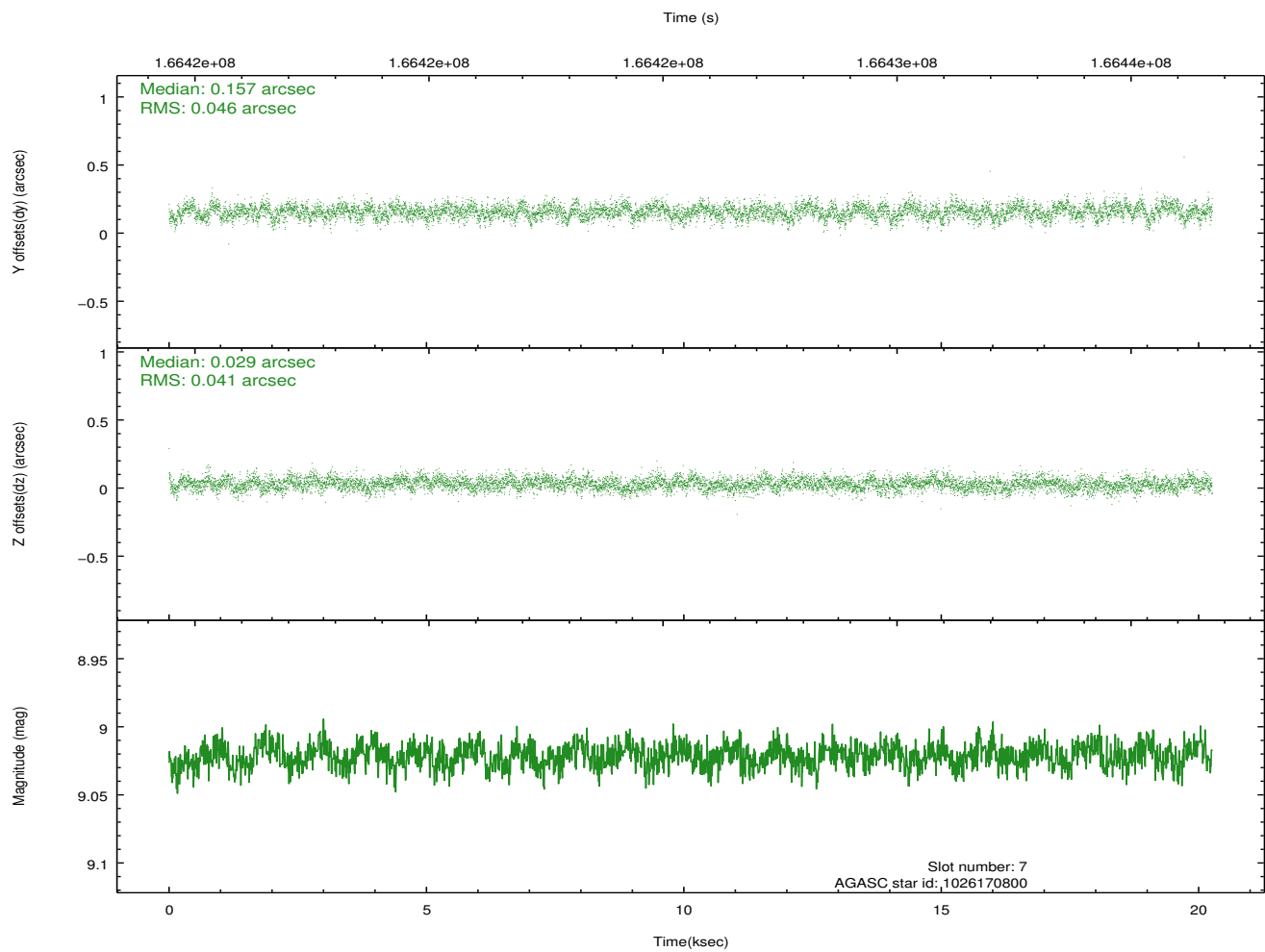
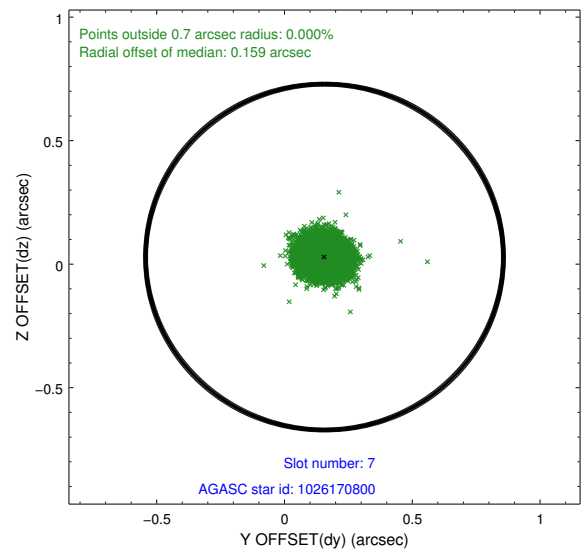
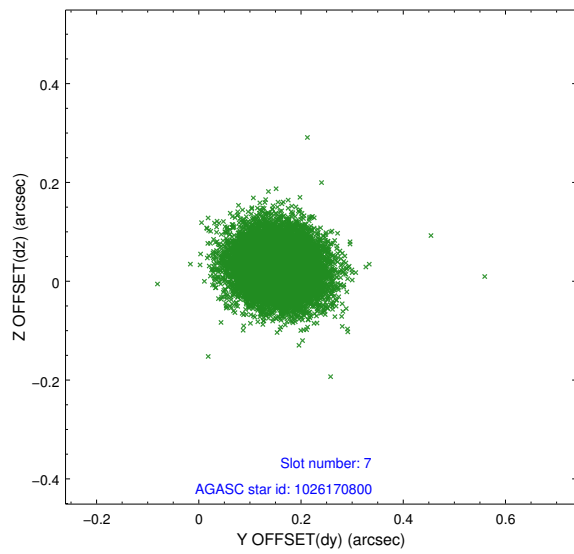
2.4.3 Slot 5



2.4.4 Slot 6

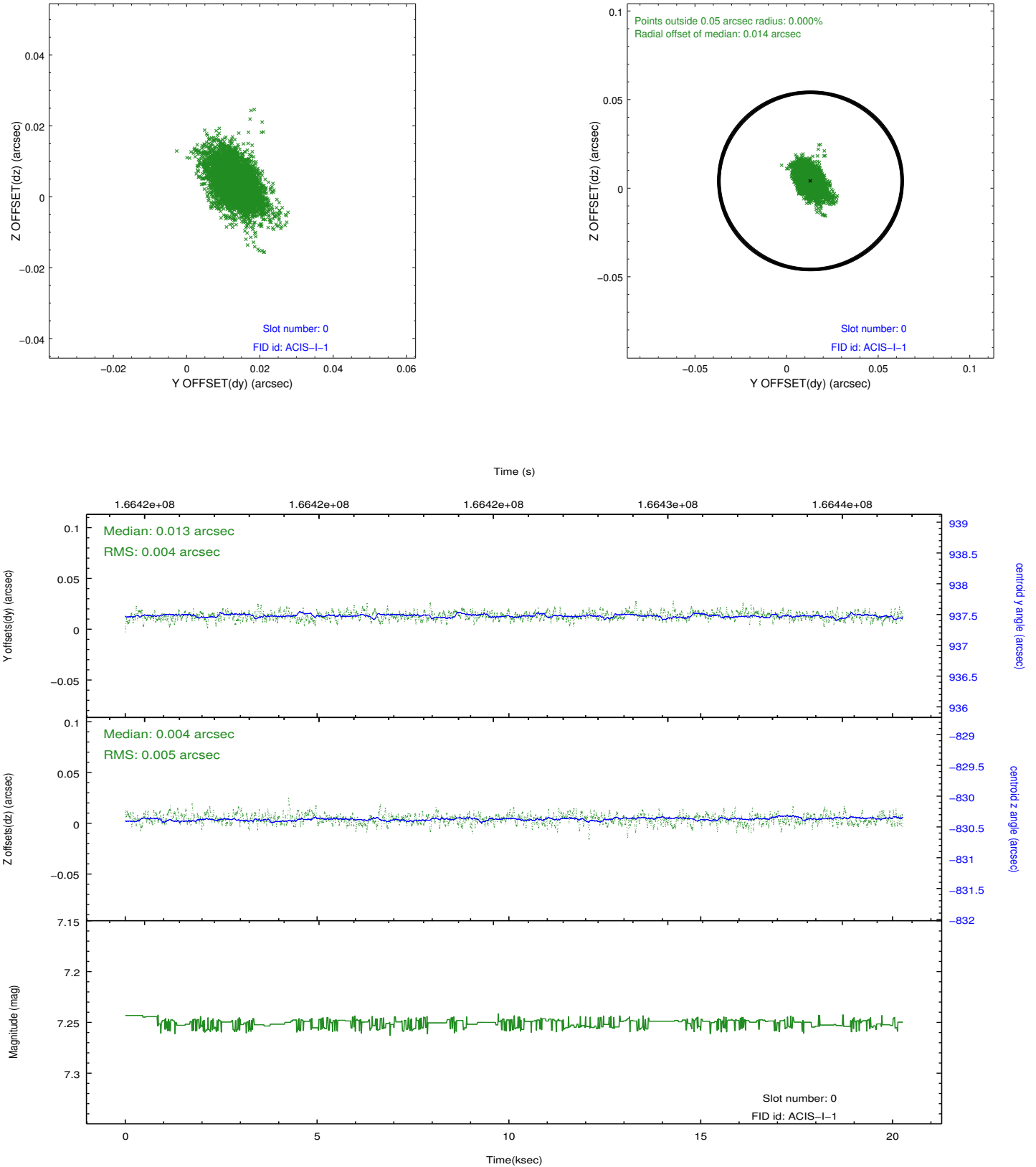


2.4.5 Slot 7

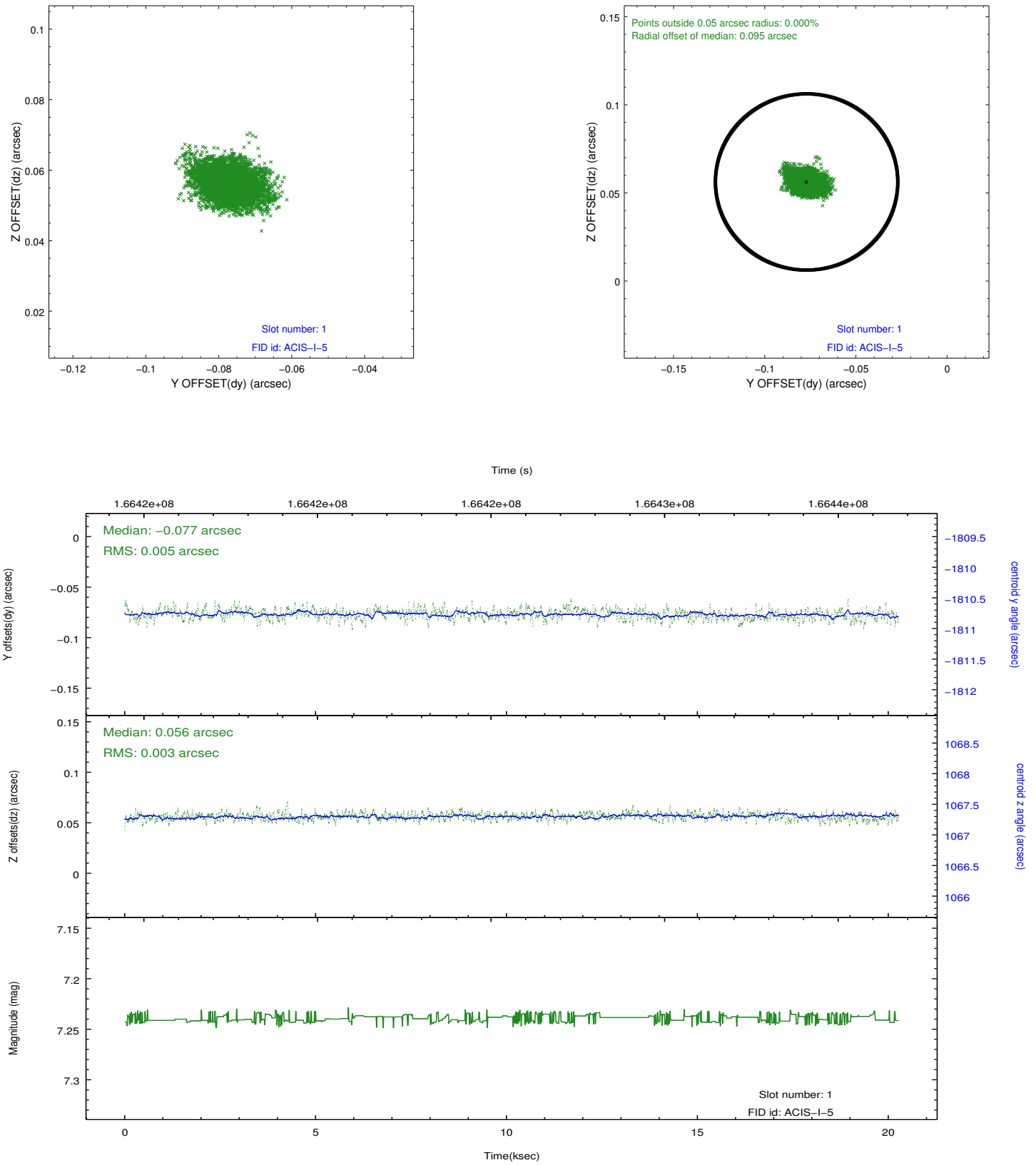


2.5 FID Slots

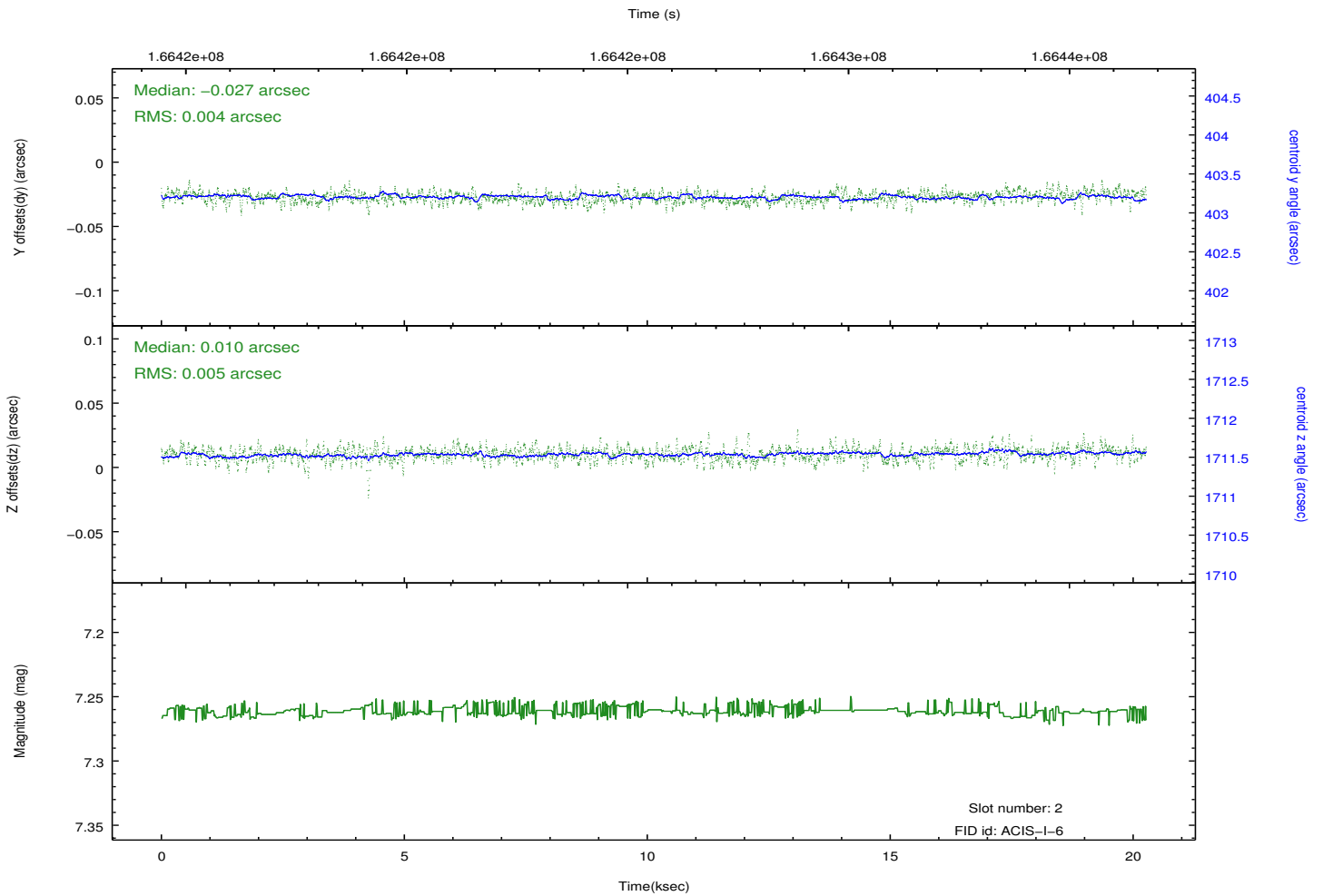
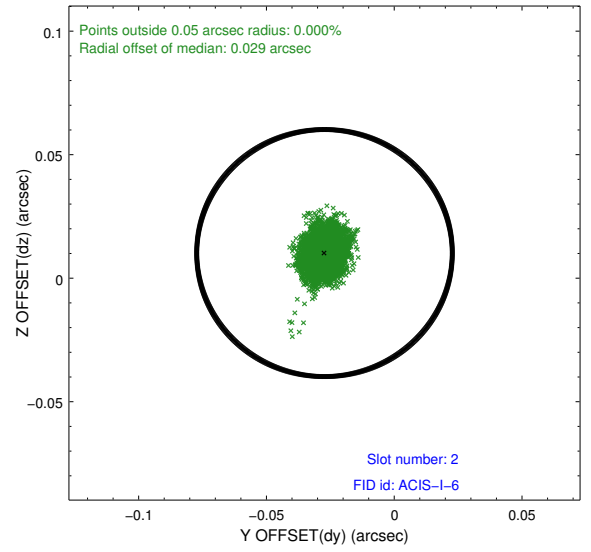
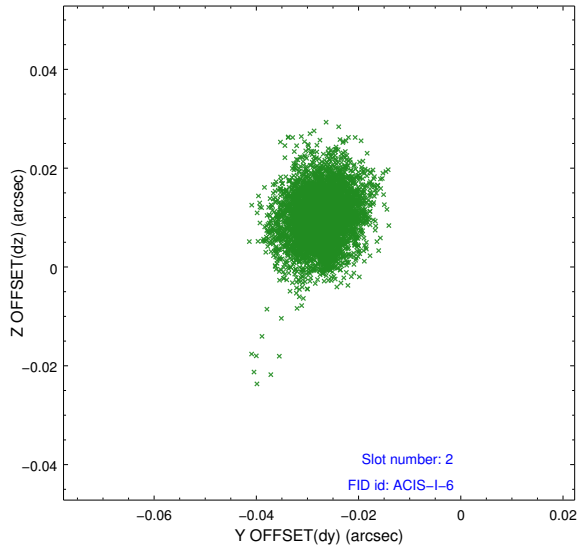
2.5.1 Slot 0



2.5.2 Slot 1



2.5.3 Slot 2



A Summary

A.1 Status

V&V Scientist	Jen Lauer
V&V Date (YYYY-MM-DD)	2012.11.14
V&V Edition	1
V&V Disposition and Status	OK
V&V Charge Time	19.849

A.2 Comments