

V&V Reference Report

L2 ASCDS Version : 8.4.5

Observation 4403 - L2 Version 3
Chandra X-Ray Center

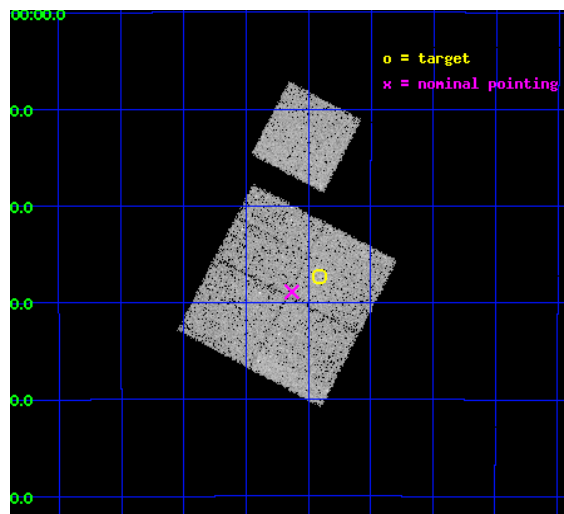
L2 Processing Date : Oct 24 2012

Contents

1	Front	2
2	OBI	3
2.1	OBI	3
2.1.1	Images	3
2.1.2	Bias	3
2.1.3	Parameters	4
2.1.4	Events	4
2.2	Compared Parameters	5
2.3	Aspect	6
2.4	Star Slots	9
2.4.1	Slot 3	9
2.4.2	Slot 4	10
2.4.3	Slot 5	11
2.4.4	Slot 6	12
2.4.5	Slot 7	13
2.5	FID Slots	14
2.5.1	Slot 0	14
2.5.2	Slot 1	15
2.5.3	Slot 2	16
A	Summary	17
A.1	Status	17
A.2	Comments	17

1 Front

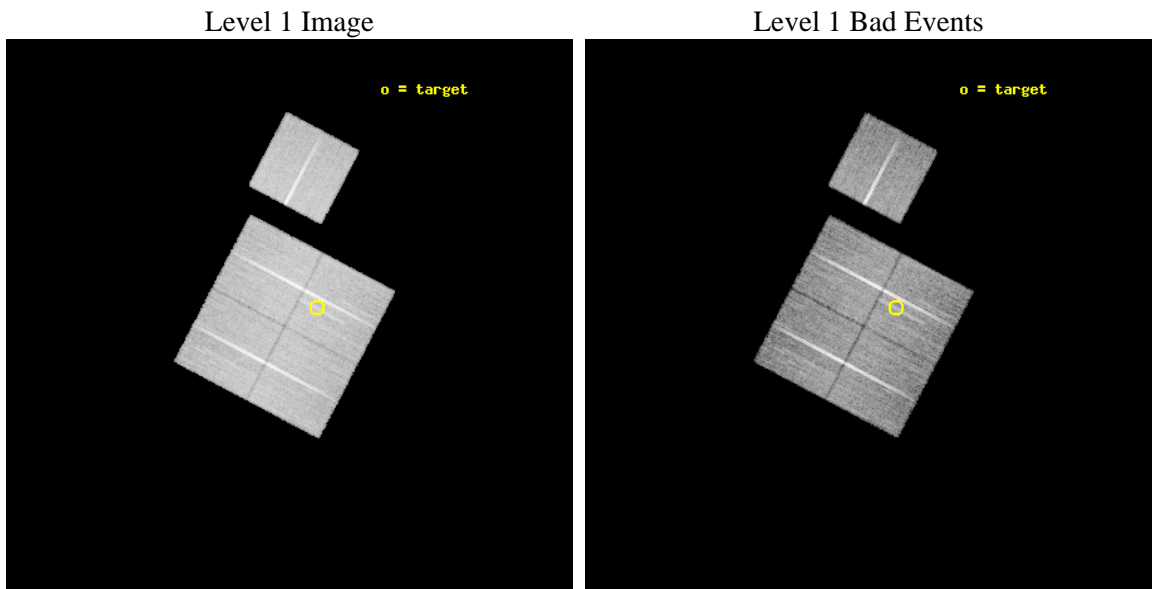
seq_num	800354	Sequence number
obs_id	4403	Observation id
title	THE PHYSICAL PROPERTIES OF A MASSIVE CLUSTER AT Z=1.235	Proposal t
observer	Dr. Piero Rosati	Principal investigator
object	RDCS1252-29	Source name
dtcycle	0	
cycle	P	events from which exps? Prim/Second/Both
ra_targ	193.227083	Observer's specified target RA [deg]
dec_targ	-29.455	Observer's specified target Dec [deg]
ra_nom	193.28296550174	Nominal RA [deg]
dec_nom	-29.481472398144	Nominal Dec [deg]
roll_nom	27.736197730561	Nominal Roll [deg]
revision	3	Processing version of data
ontime	26486.366579741	Sum of GTIs [s]
livetime	26140.302701398	Livetime [s]
ontime0	26476.820479214	Sum of GTIs [s]
ontime1	26486.284499735	Sum of GTIs [s]
ontime2	26476.902589172	Sum of GTIs [s]
ontime3	26486.366579741	Sum of GTIs [s]
ontime6	26479.920558929	Sum of GTIs [s]
l2events	61561	Number of level 2 events



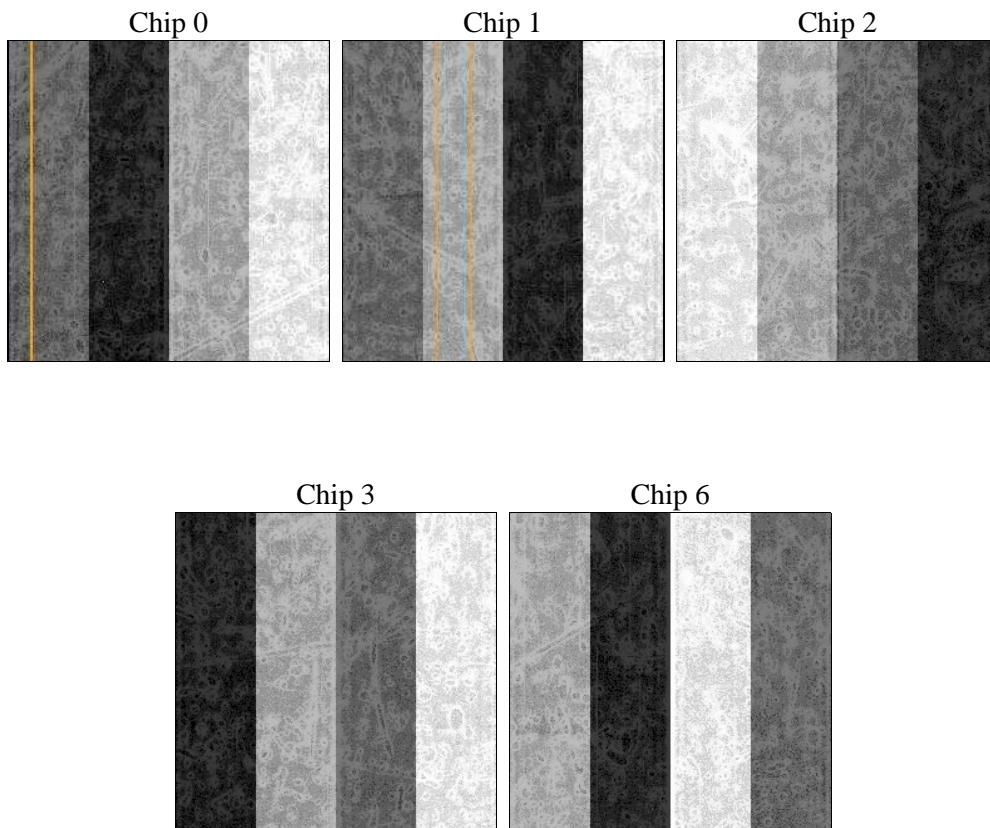
2 OBI

2.1 OBI

2.1.1 Images



2.1.2 Bias



2.1.3 Parameters

obi_num	0	Obi number	sched_exp_time	26367.000000	[s] Scheduled observation exposure time
ascdsver	8.4.5	Processing system revision	ontime	26486.366579741	Sum of GTIs [s]
caldbver	4.5.2	 	ontime0	26476.820479214	Sum of GTIs [s]
date	2012-10-24T20:09:59	Date and time of file creation	ontime1	26486.284499735	Sum of GTIs [s]
revision	3	Processing version of data	ontime2	26476.902589172	Sum of GTIs [s]
			ontime3	26486.366579741	Sum of GTIs [s]
			ontime6	26479.920558929	Sum of GTIs [s]
			l1events	712681	Number of level 1 events

2.1.4 Events

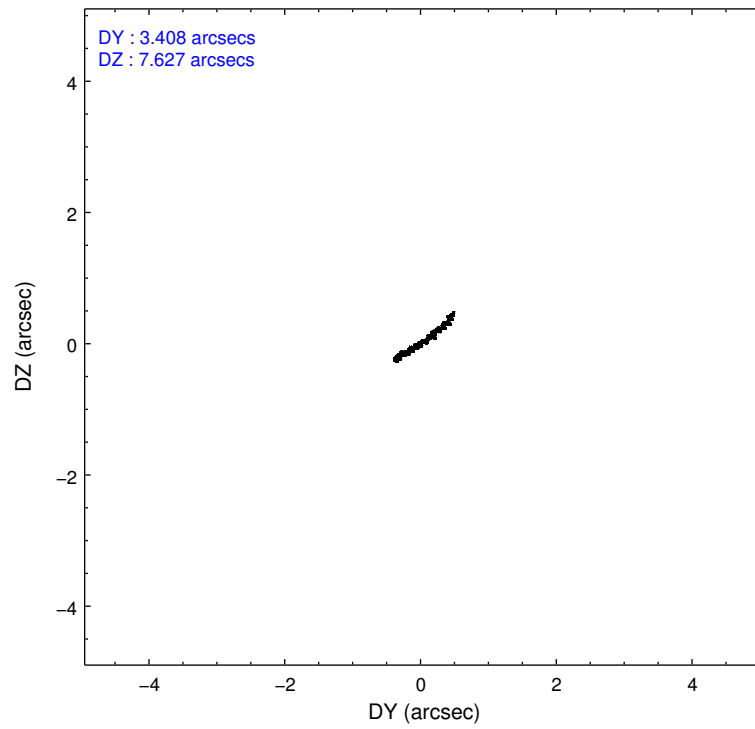
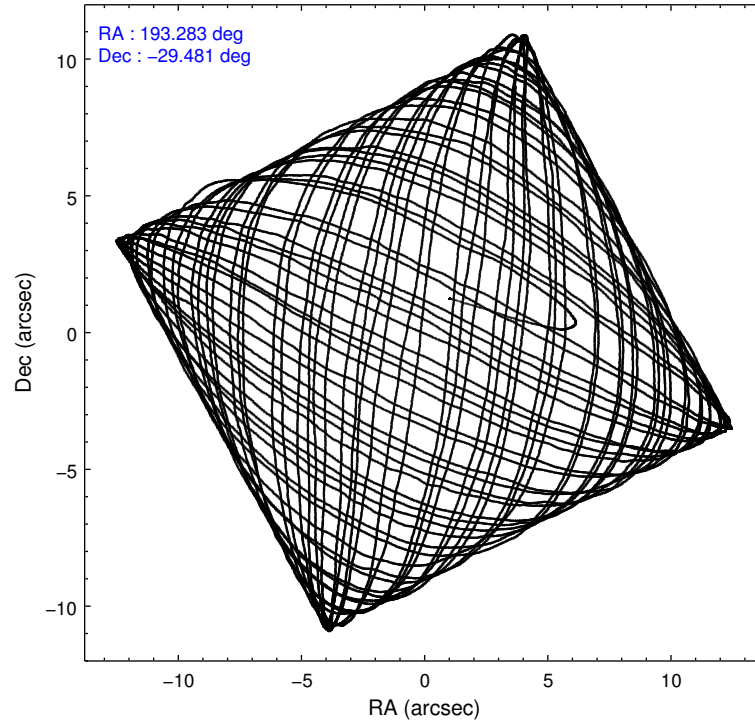
	ccd 0	ccd 1	ccd 2	ccd 3	ccd 6
level 1 events	134346	136473	151148	143350	147364
rejected events	119663	120063	136361	129528	131743
rejected %	89%	87%	90%	90%	89%

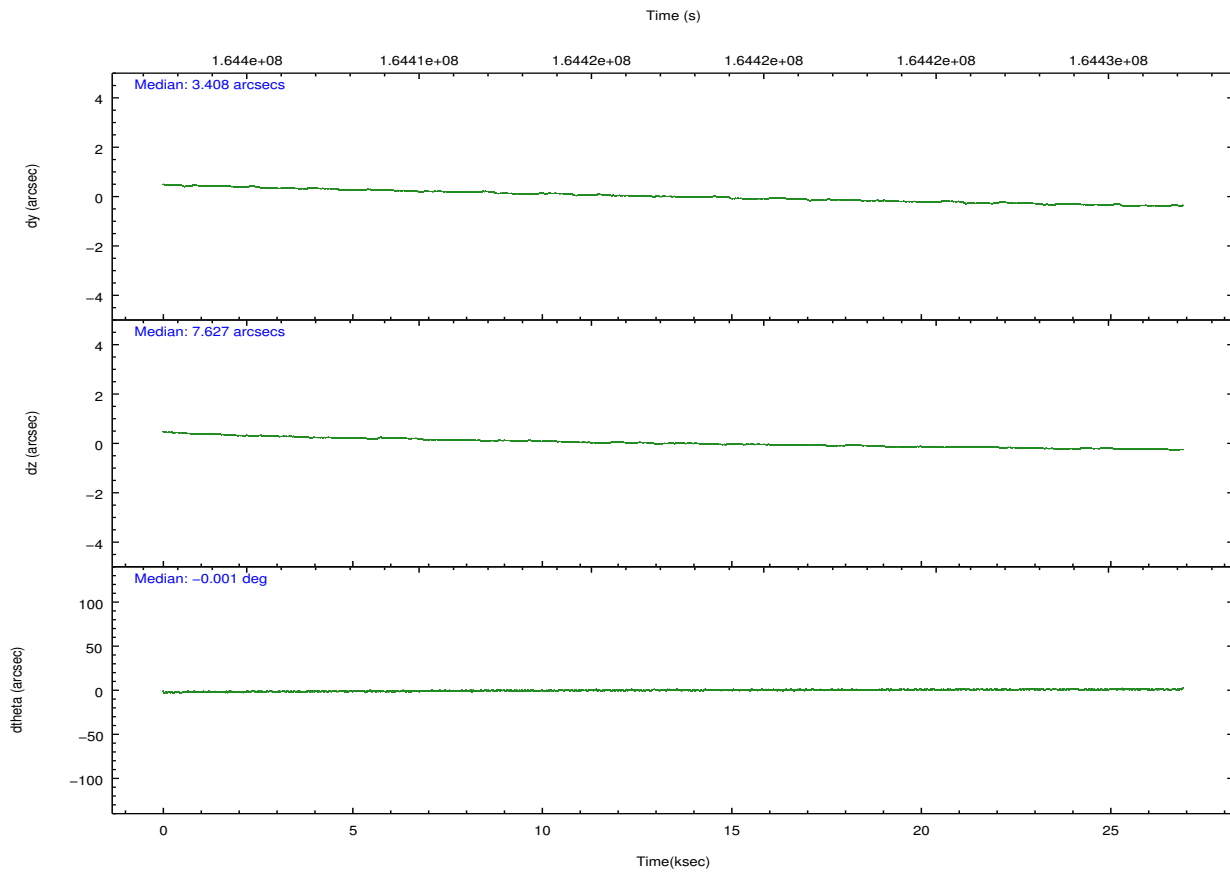
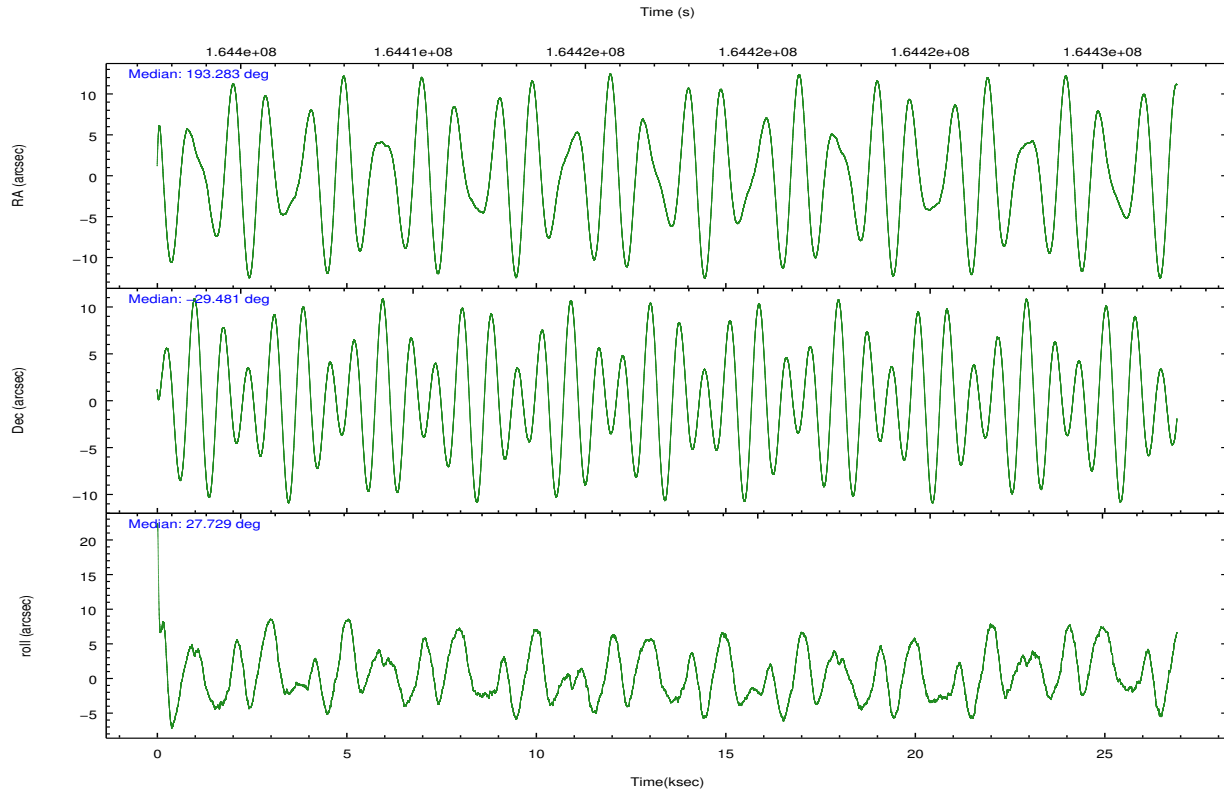
	ccd 0	ccd 1	ccd 2	ccd 3	ccd 6
grade 0 events	5250	6270	5636	5130	5950
	3%	4%	3%	3%	4%
grade 1 events	73	90	75	83	64
	0%	0%	0%	0%	0%
grade 2 events	3463	3312	3425	2838	3297
	2%	2%	2%	1%	2%
grade 3 events	1656	1822	1483	1610	1726
	1%	1%	0%	1%	1%
grade 4 events	1534	1829	1660	1571	1674
	1%	1%	1%	1%	1%
grade 5 events	4898	5080	4601	5347	5347
	3%	3%	3%	3%	3%
grade 6 events	2784	3182	2588	2677	2978
	2%	2%	1%	1%	2%
grade 7 events	114688	114888	131680	124094	126328
	85%	84%	87%	86%	85%

2.2 Compared Parameters

Parameter	Planned	Actual	Parameter	Planned	Actual
Instrument	ACIS	ACIS	Obspar format version number	7	7
Detector	ACIS-01236	ACIS-01236	Obspar file type	PREDICTED	ACTUAL
Grating	NONE	NONE	Obspar update status	NONE	UPDATED
Data mode	VFAINT	VFAINT	Number of optional ACIS chips dropped	0	0
Observation mode	POINTING	POINTING	On-chip summing requested	N	N
[deg] Pointing RA	193.266300	193.2829655017365	Subarray requested	NONE	NONE
[deg] Pointing Dec	-29.504681	-29.48147239814443	Alternating exposures requested	N	N
[deg] Pointing Roll	27.519294	27.73619773056114	[s] Primary exposure time	0.000000	3.1
[mm] SIM focus pos	-0.782348	-0.7809083437167272			
[mm] SIM defocus	0	0.001439871863259334			
[mm] SIM translation stage pos	-233.592463	-233.5874344608287			
[mm] SIM translation stage offset	0	-0.005018542100998502			
[s] Observation start time (MET)	164404456.184000	164403317.44583			
Observation start date	2003-03-18T19:53:12	2003-03-18T19:35:17			
[s] Observation end time (MET)	164430823.184000	164431476.24702			
Observation end date	2003-03-19T03:12:39	2003-03-19T03:24:36			
Read mode	TIMED	TIMED			

2.3 Aspect



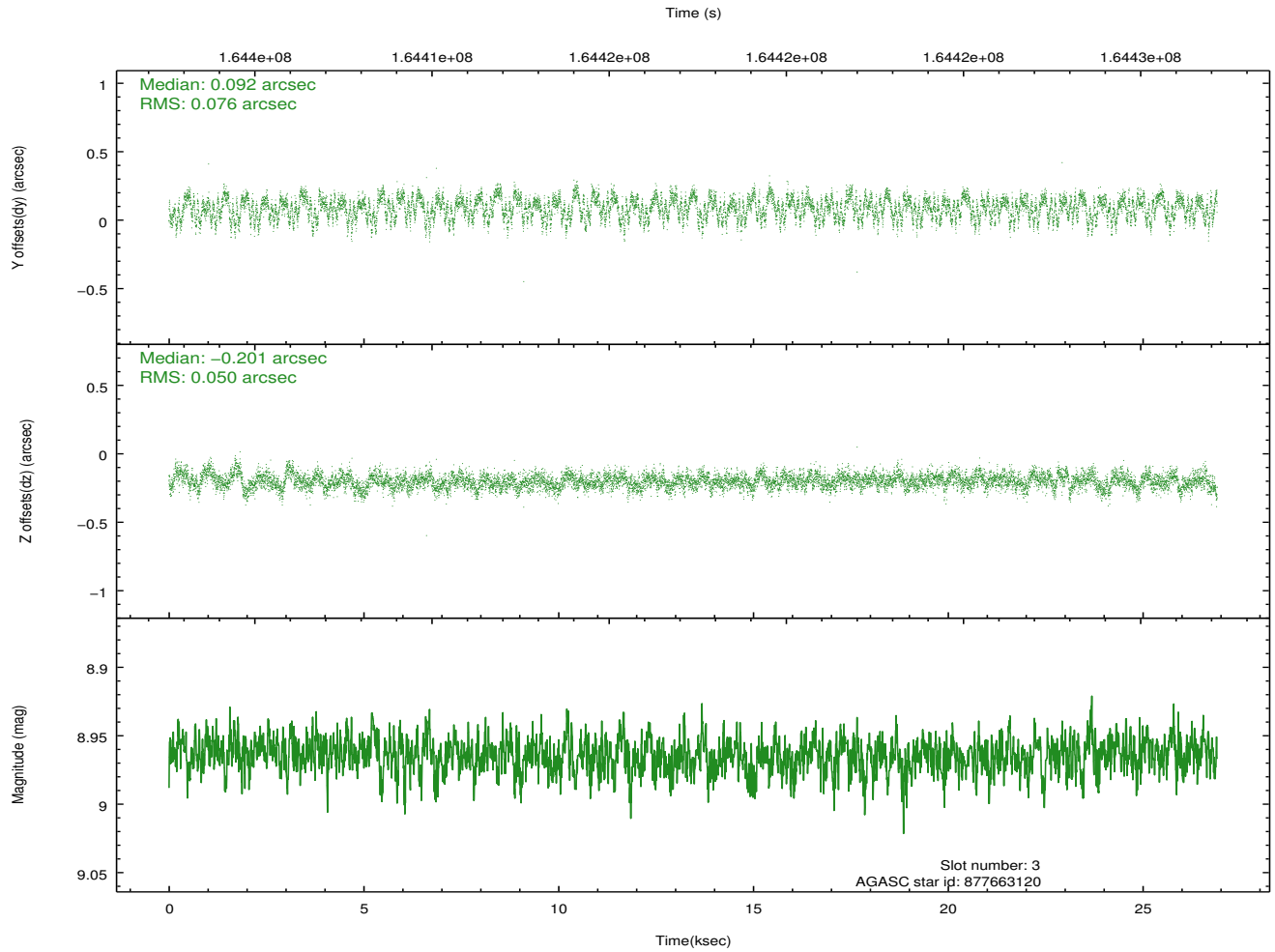
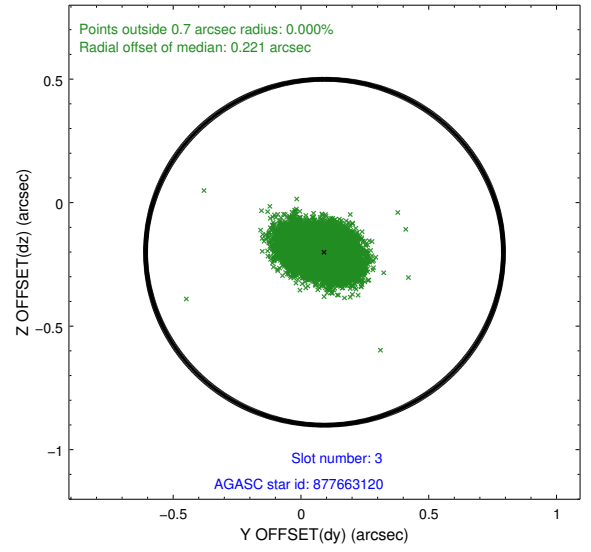
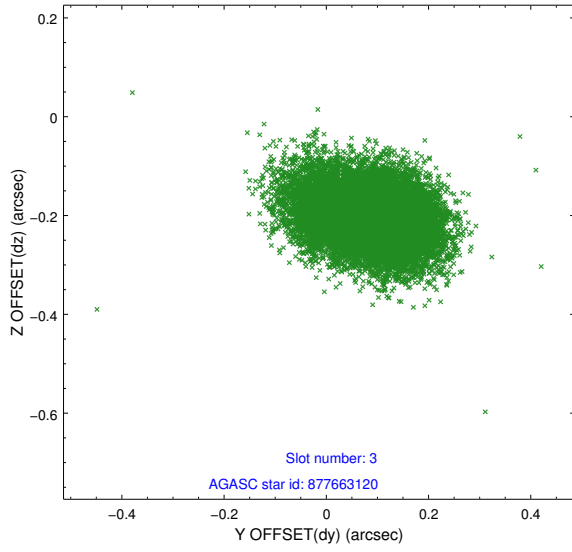


Slot Statistics

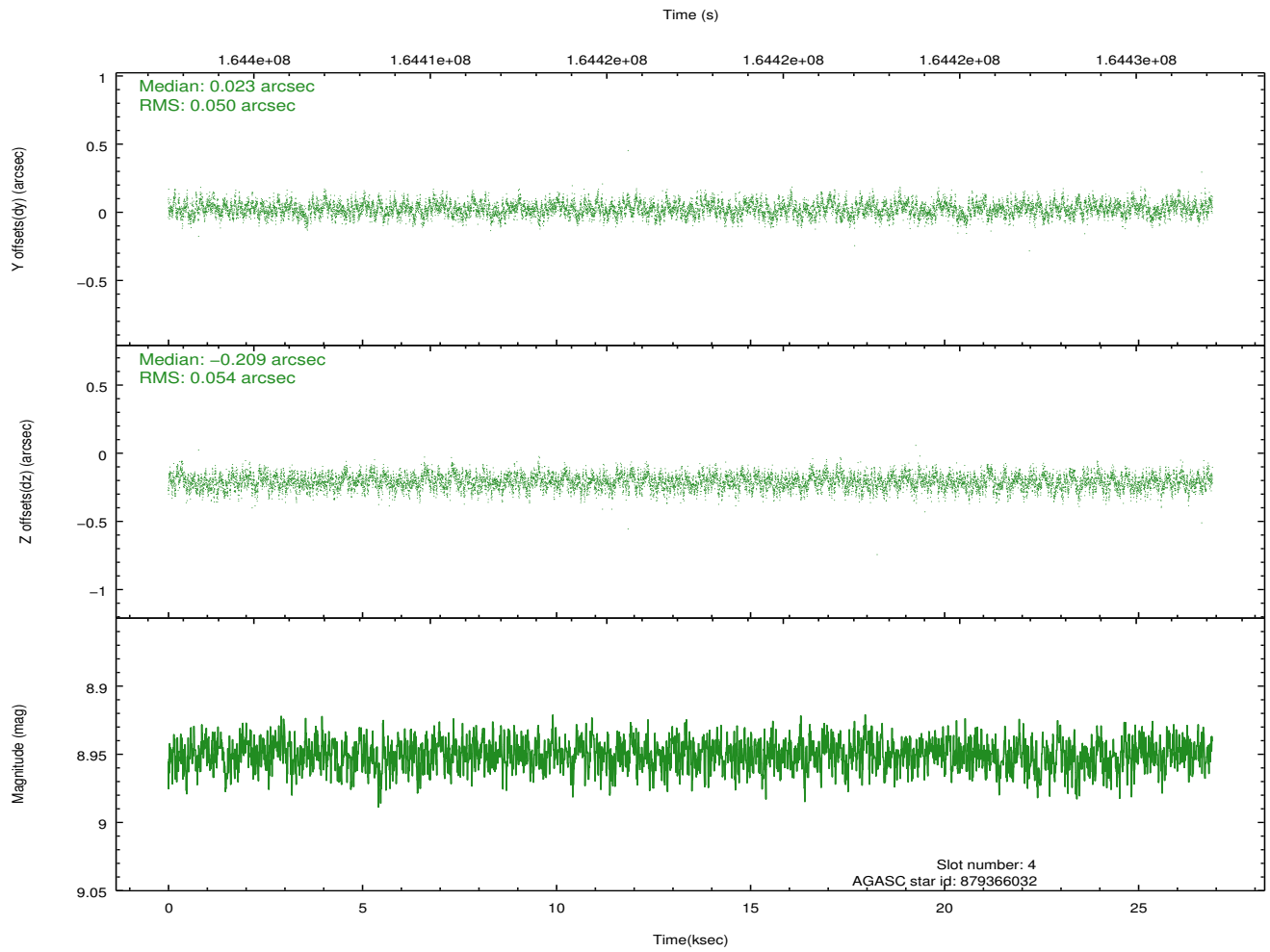
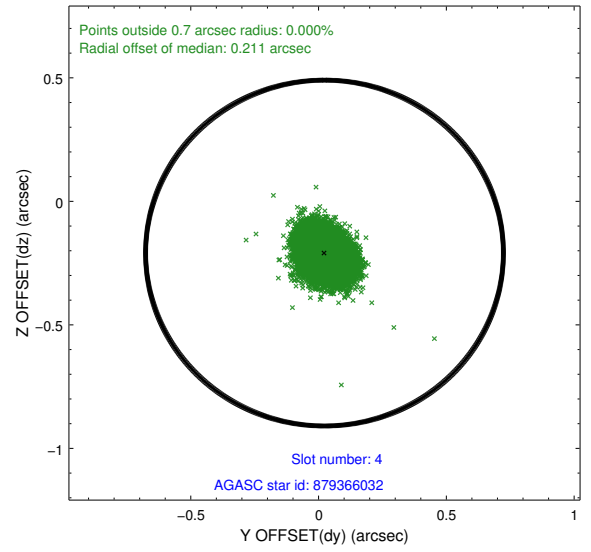
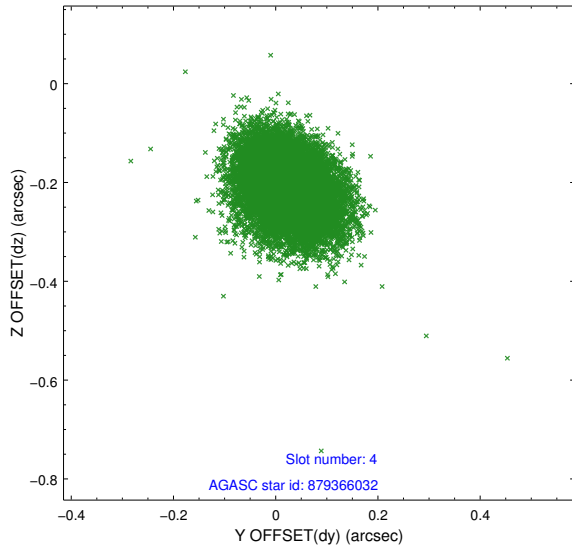
slot	status	id	mag	n_pts	med_dy	med_dz	dr1	dr2	ra	dec	mean_y	mean_z
0	FID	ACIS-I-1	7.25	6562	0.013	0.030	0.008	0.015	0.000000	0.000000	936.36	-831.04
1	FID	ACIS-I-5	7.24	6562	-0.097	0.057	0.013	0.020	0.000000	0.000000	-1811.78	1066.46
2	FID	ACIS-I-6	7.26	6562	-0.008	-0.016	0.012	0.021	0.000000	0.000000	401.81	1710.97
3	GUIDE	877663120	8.96	13122	0.092	-0.201	0.097	0.156	192.452481	-29.165475	-1708.84	2256.70
4	GUIDE	879366032	8.95	13120	0.023	-0.209	0.079	0.127	192.835243	-28.983192	-338.09	2289.98
5	GUIDE	950012928	9.29	13121	-0.038	0.279	0.092	0.144	193.270436	-30.070871	-930.08	-1813.26
6	GUIDE	879362752	9.54	13121	-0.005	-0.004	0.104	0.165	193.491429	-28.667924	2022.00	2342.44
7	GUIDE	879368072	9.31	13120	-0.068	0.138	0.081	0.134	193.665252	-29.406383	1272.39	-265.68

2.4 Star Slots

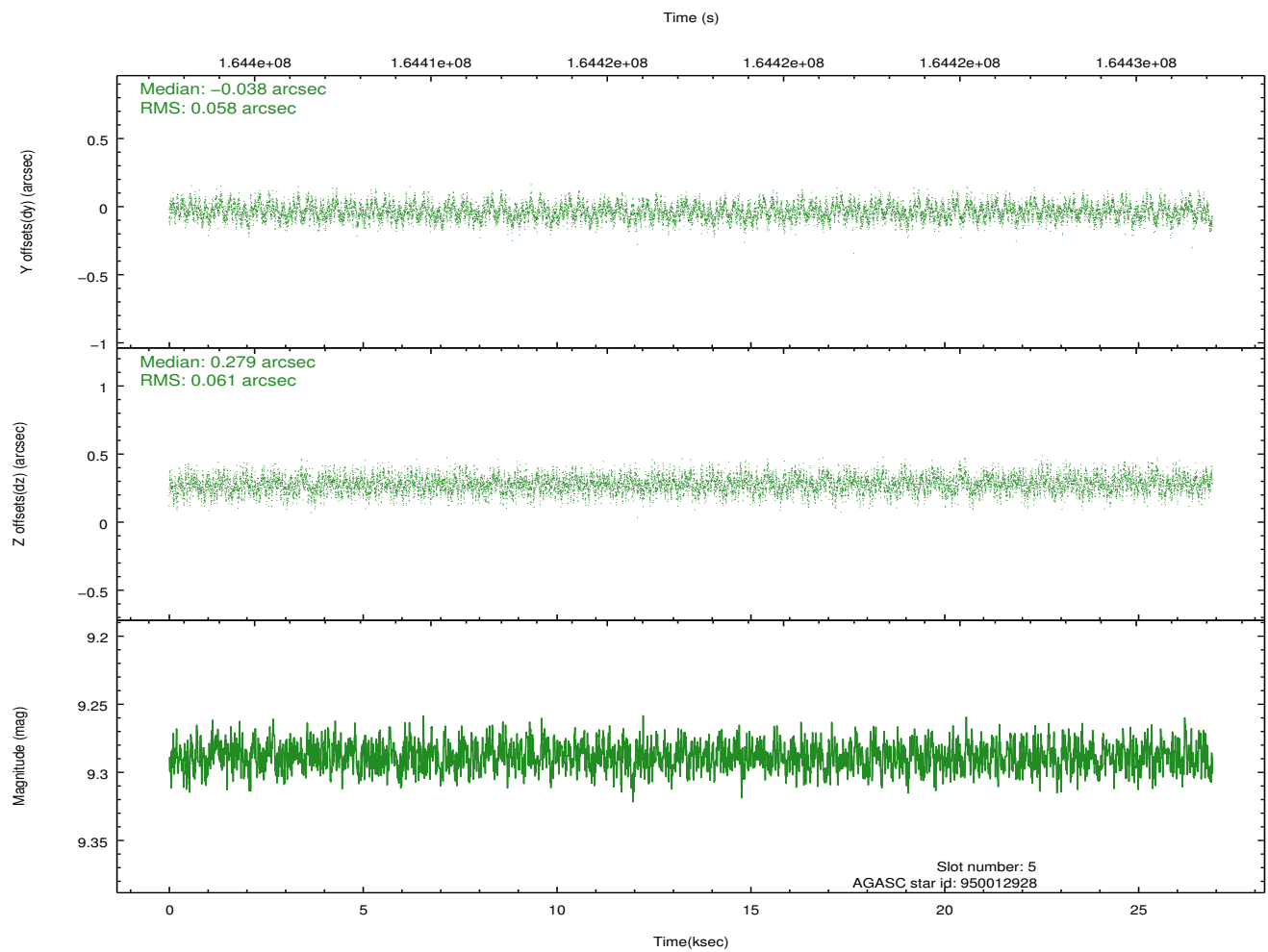
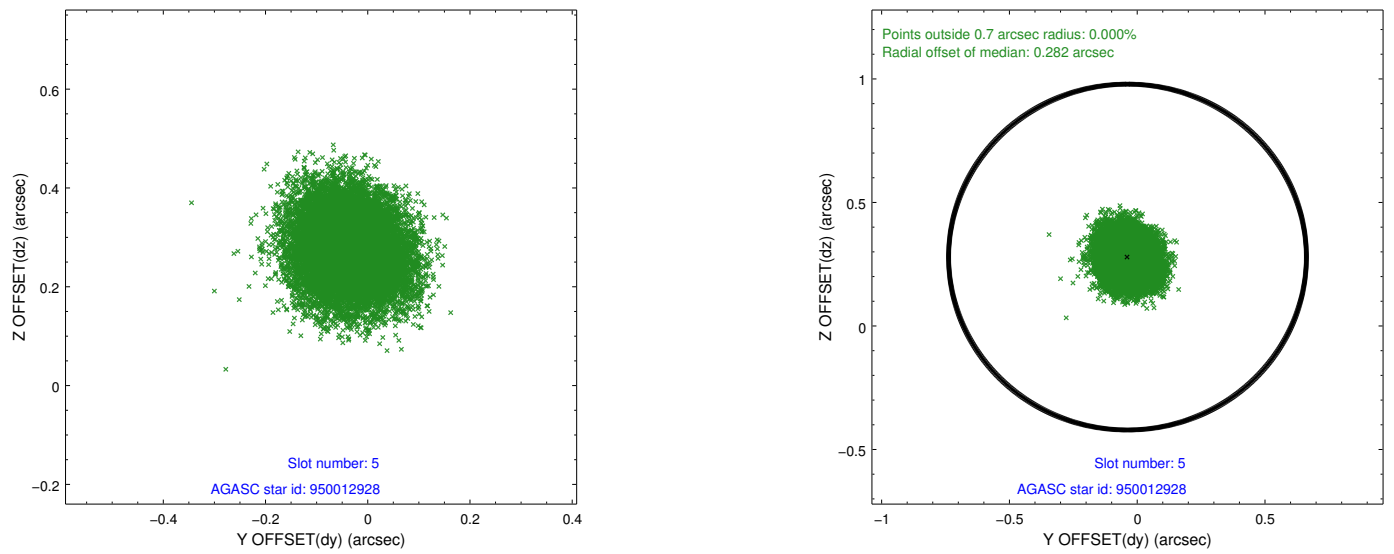
2.4.1 Slot 3



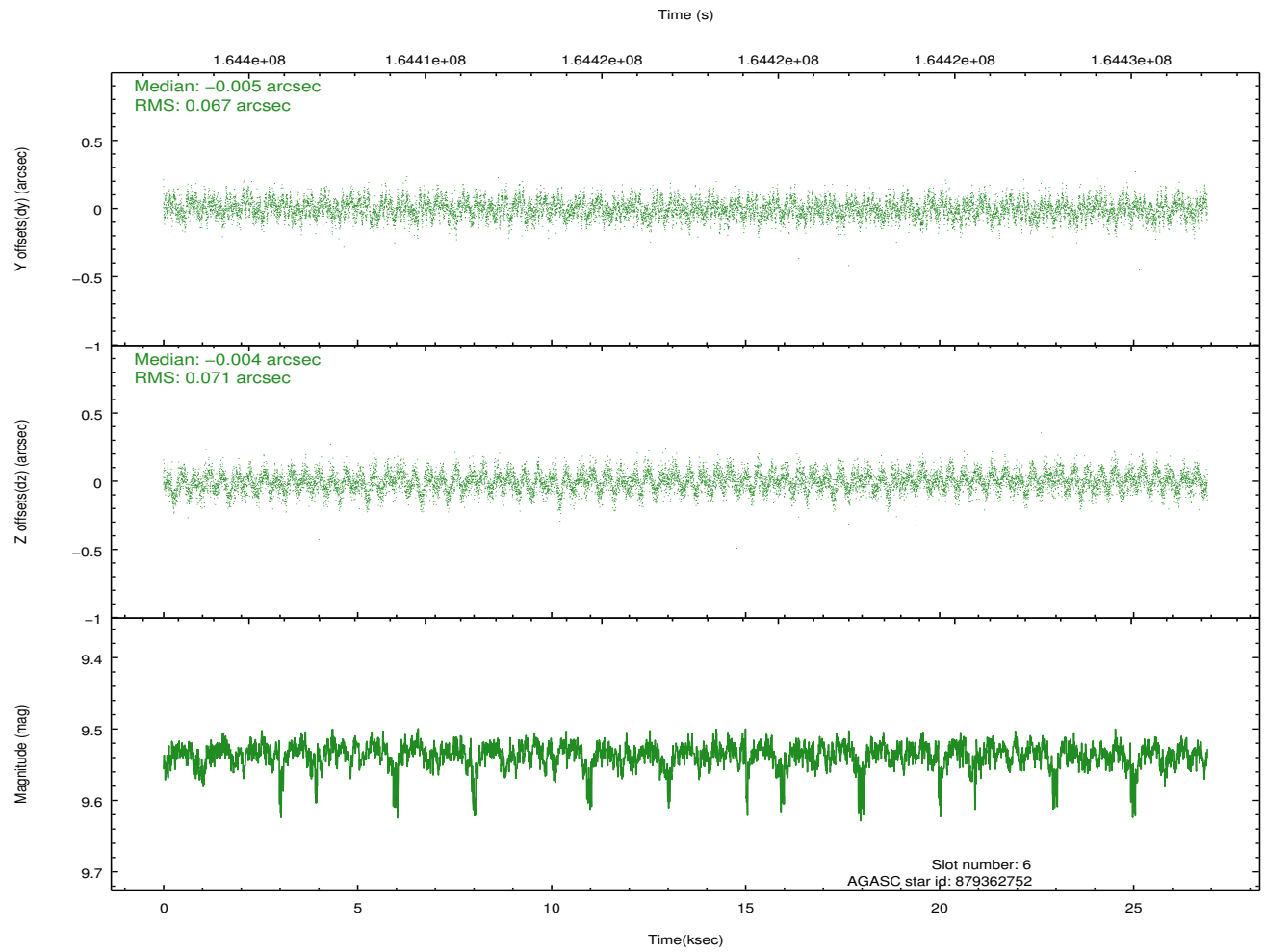
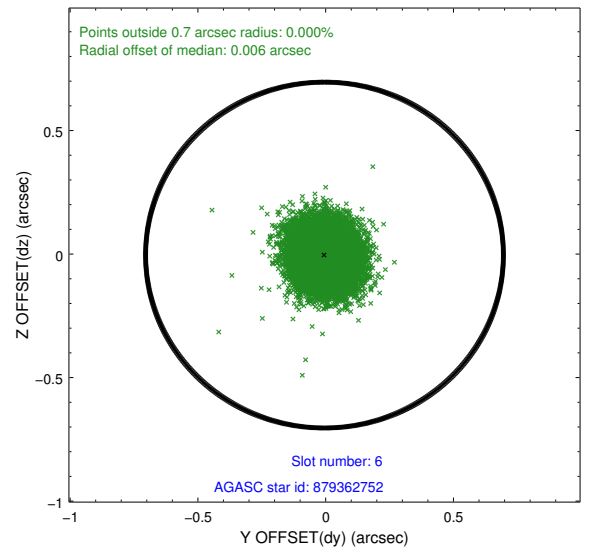
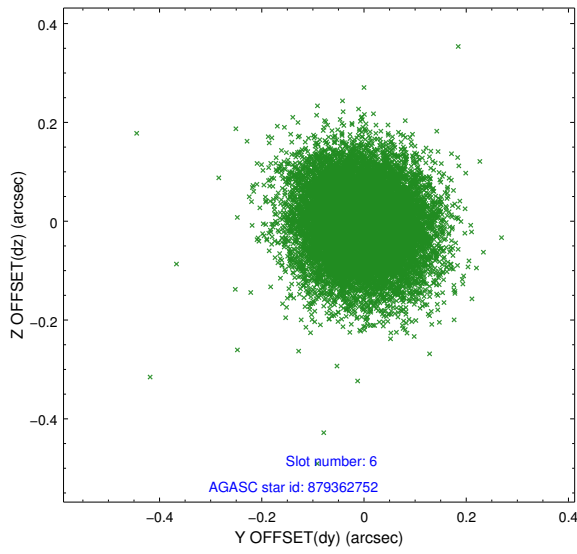
2.4.2 Slot 4



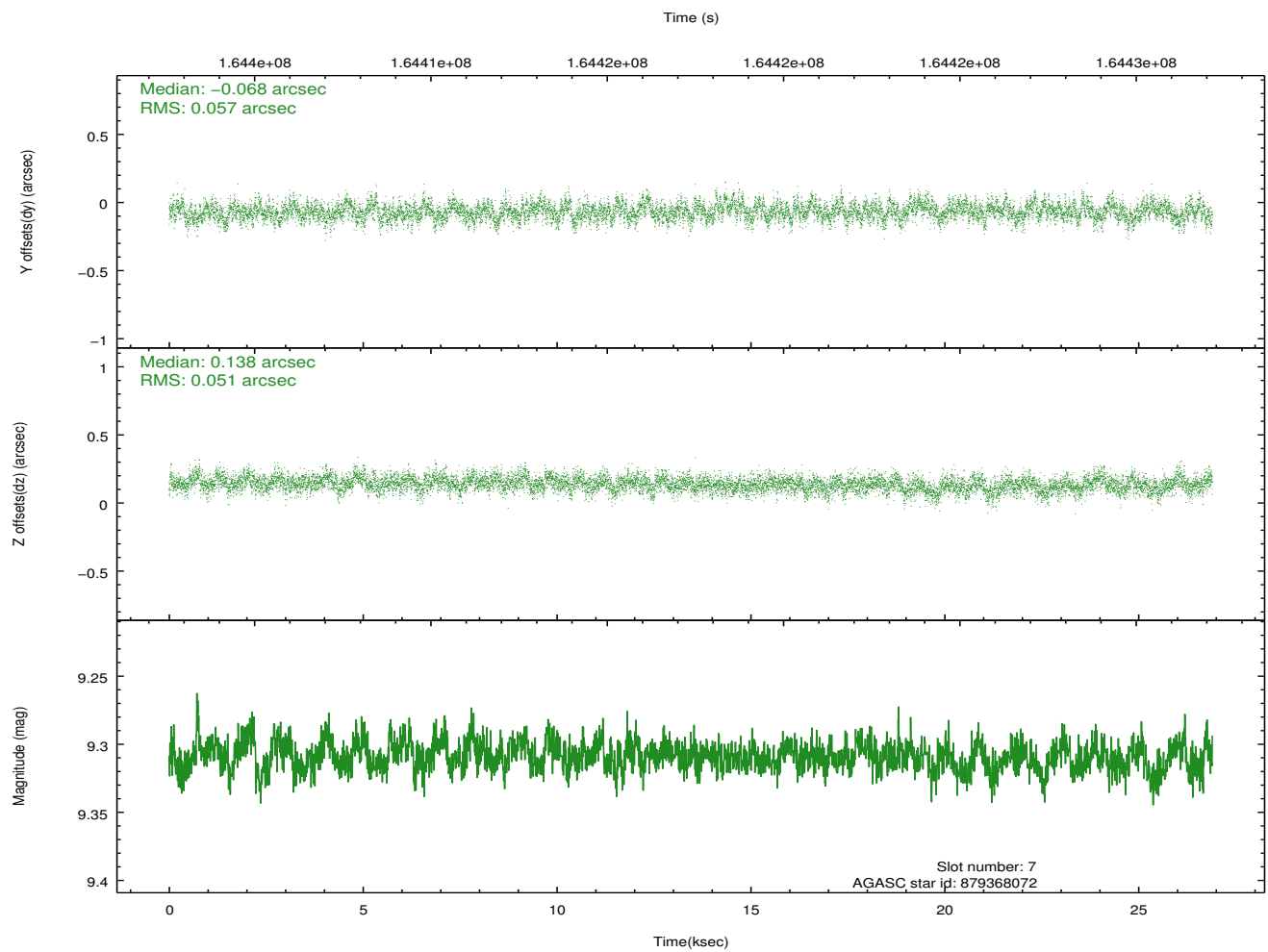
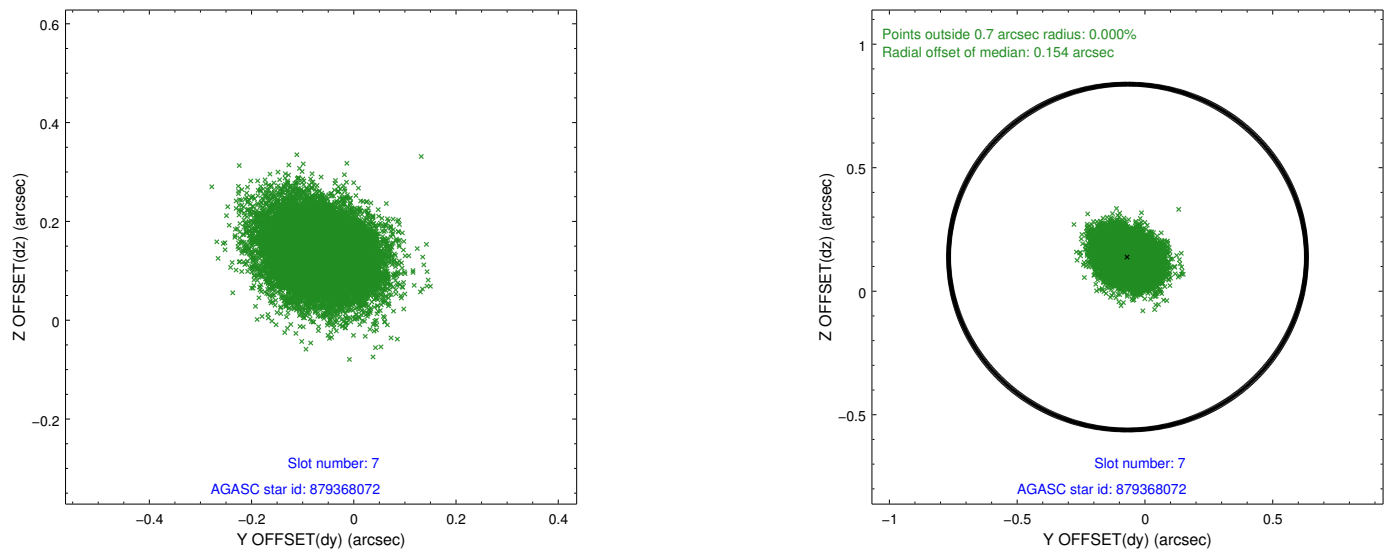
2.4.3 Slot 5



2.4.4 Slot 6

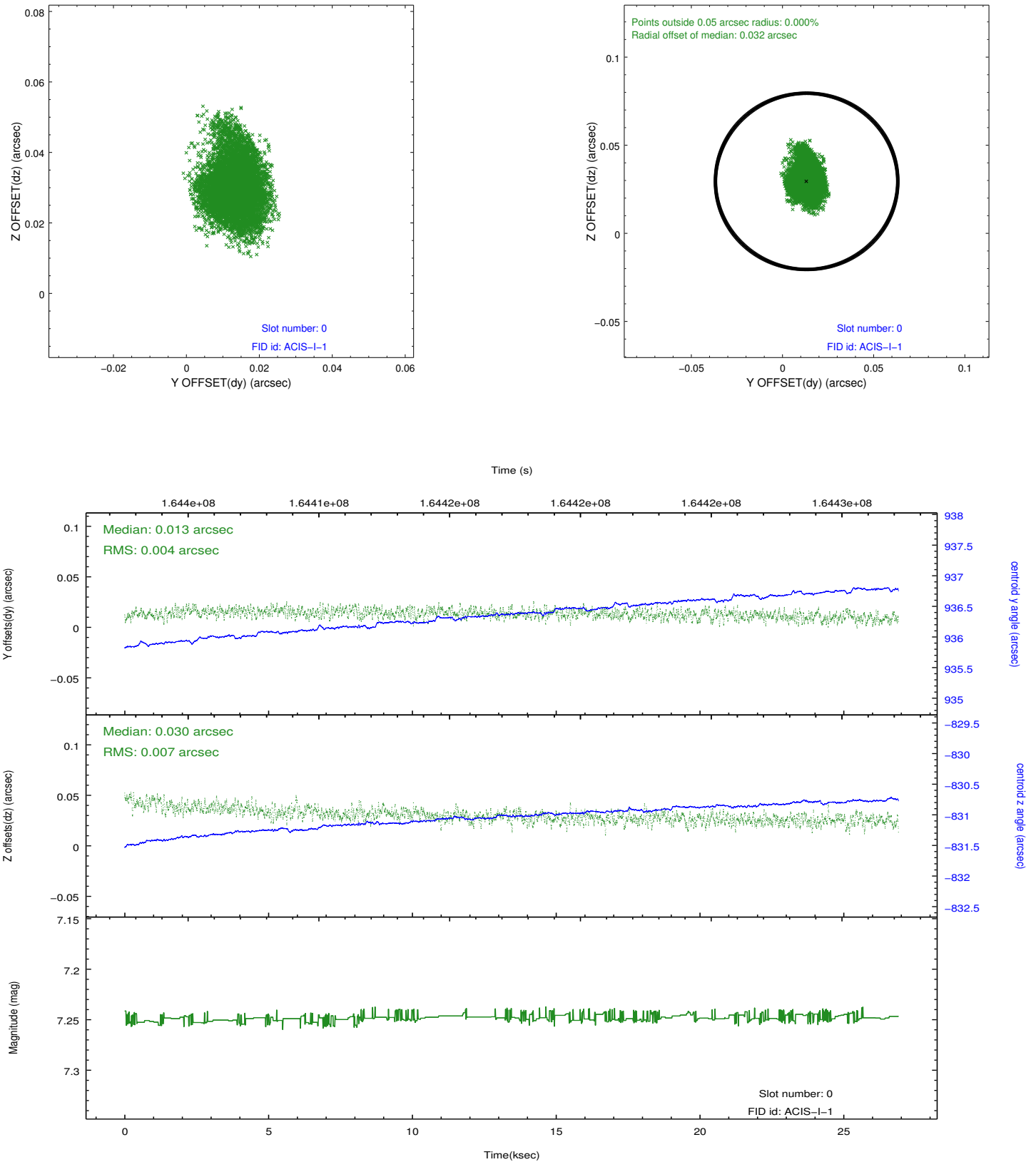


2.4.5 Slot 7

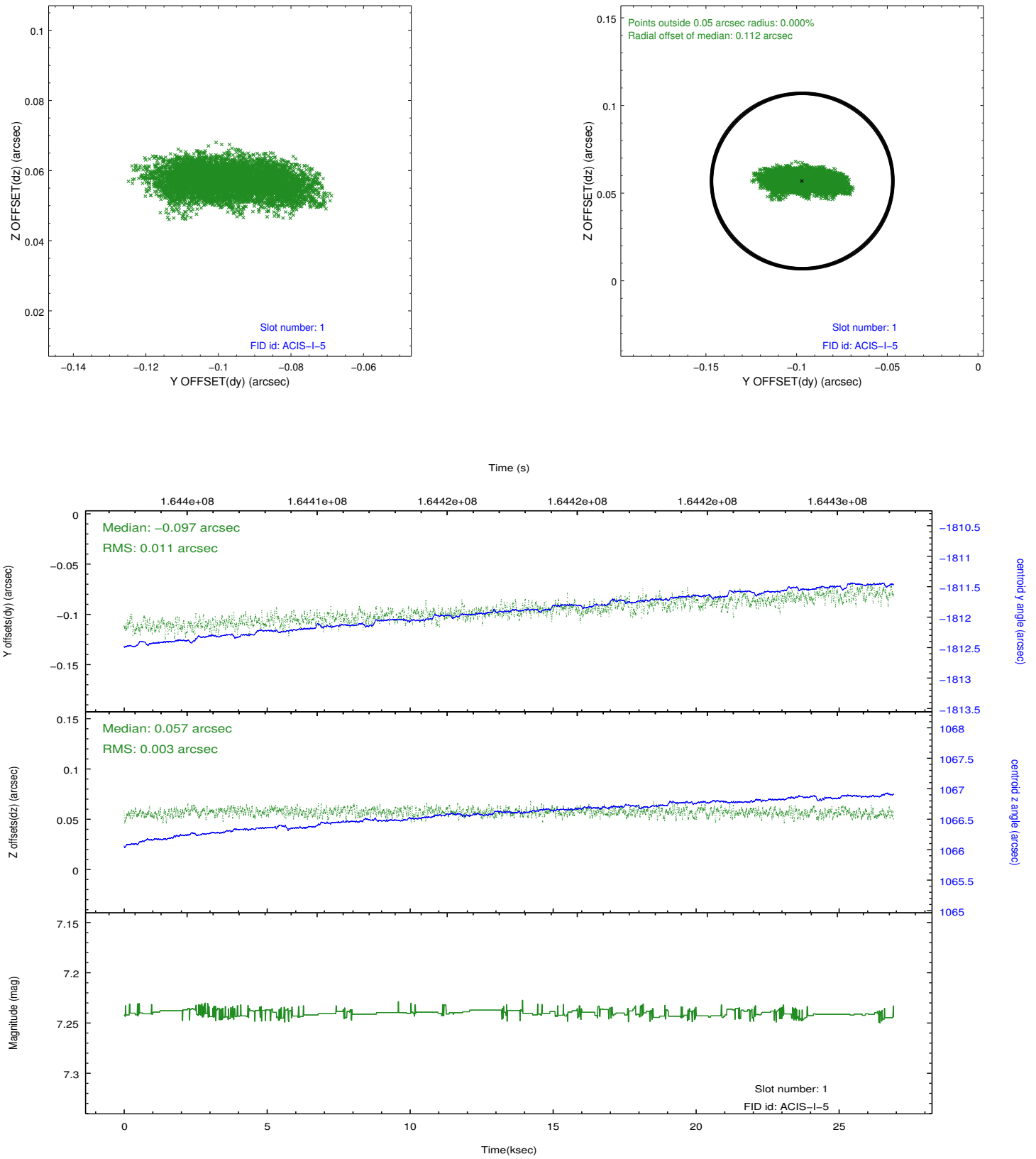


2.5 FID Slots

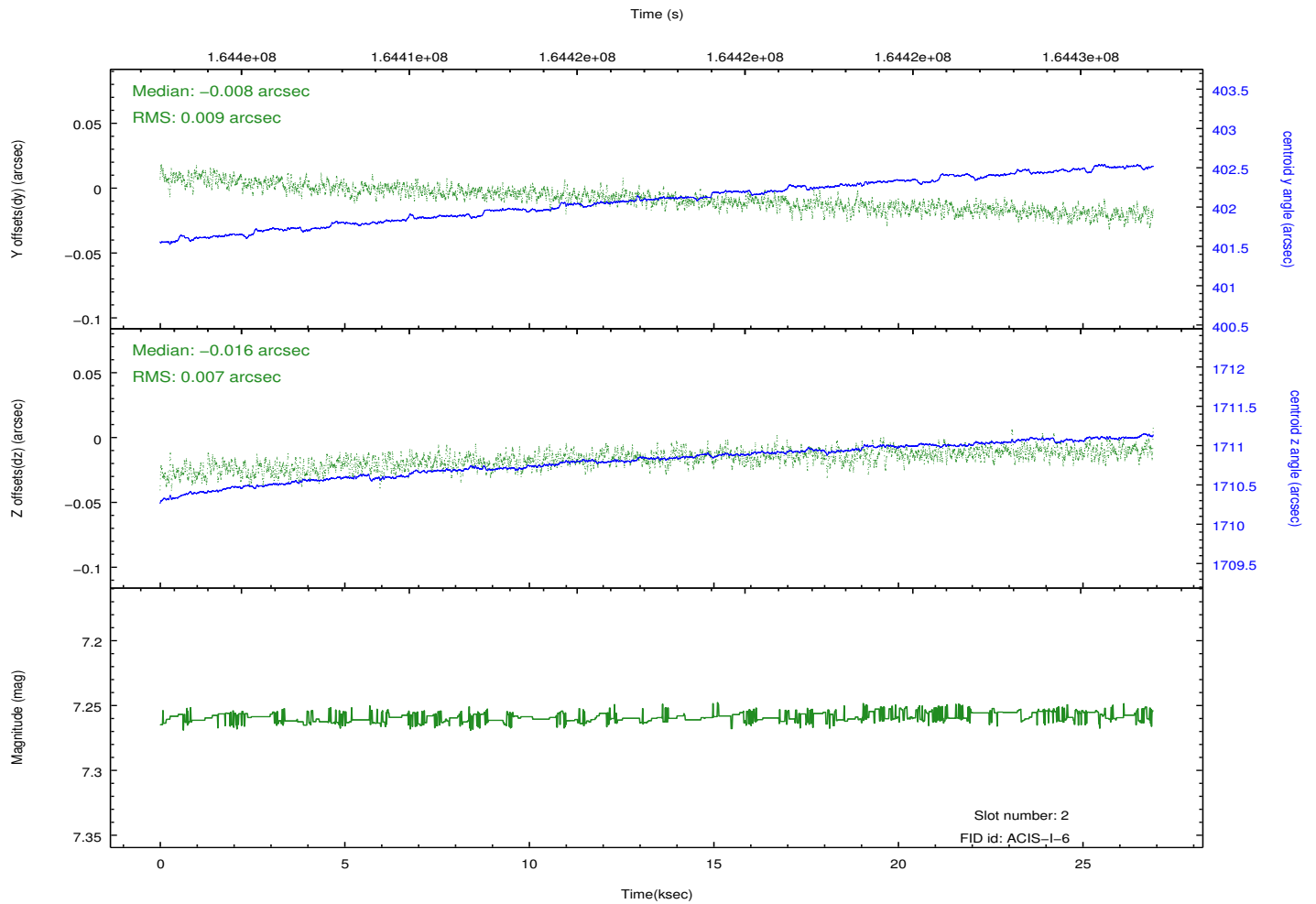
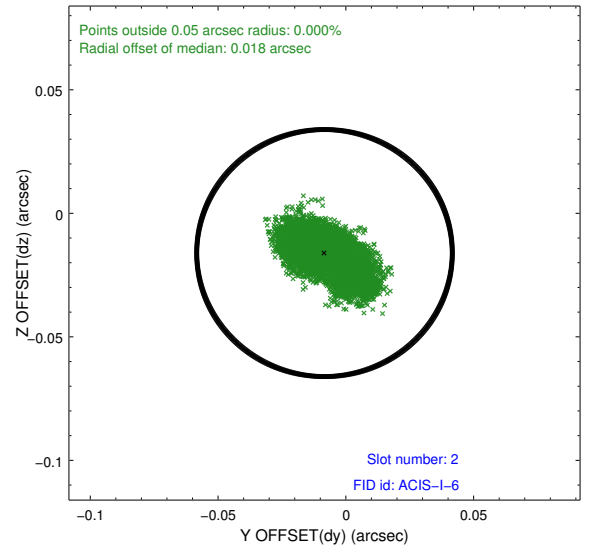
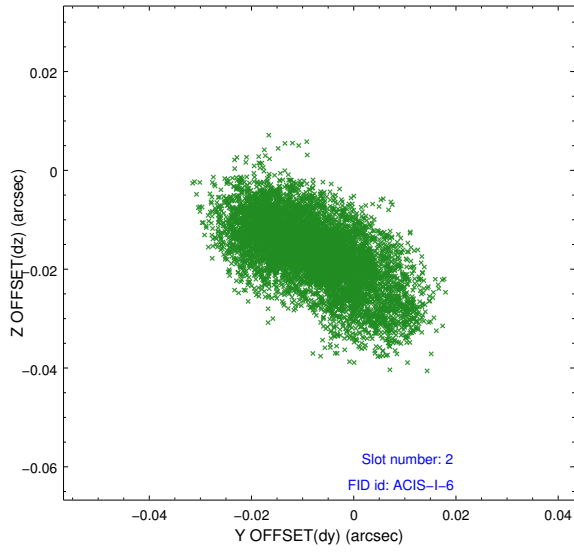
2.5.1 Slot 0



2.5.2 Slot 1



2.5.3 Slot 2



A Summary

A.1 Status

V&V Scientist	Jen Lauer
V&V Date (YYYY-MM-DD)	2012.11.09
V&V Edition	1
V&V Disposition and Status	OK
V&V Charge Time	26.486

A.2 Comments