

# V&V Reference Report

## L2 ASCDS Version : 8.4.5

Observation 4443 - L2 Version 3  
Chandra X-Ray Center

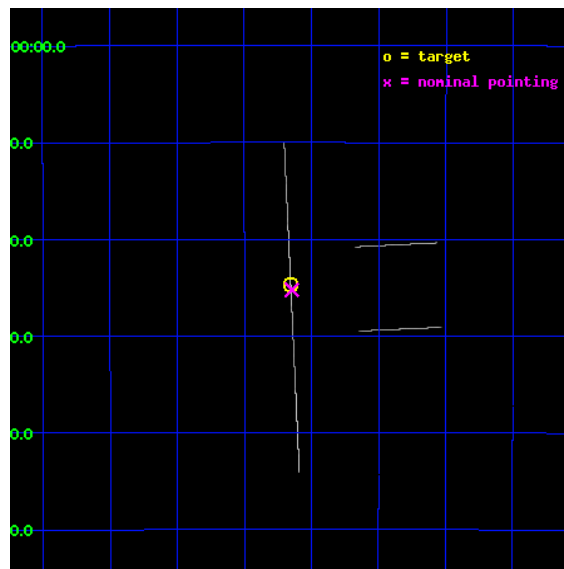
L2 Processing Date : Nov 1 2012

## Contents

<b>1</b>	<b>Front</b>	<b>2</b>
<b>2</b>	<b>OBI</b>	<b>3</b>
2.1	OBI . . . . .	3
2.1.1	Images . . . . .	3
2.1.2	Bias . . . . .	3
2.1.3	Parameters . . . . .	4
2.1.4	Events . . . . .	4
2.2	Compared Parameters . . . . .	5
2.3	Aspect . . . . .	6
2.4	Star Slots . . . . .	9
2.4.1	Slot 3 . . . . .	9
2.4.2	Slot 4 . . . . .	10
2.4.3	Slot 5 . . . . .	11
2.4.4	Slot 6 . . . . .	12
2.4.5	Slot 7 . . . . .	13
2.5	FID Slots . . . . .	14
2.5.1	Slot 0 . . . . .	14
2.5.2	Slot 1 . . . . .	15
2.5.3	Slot 2 . . . . .	16
<b>A</b>	<b>Summary</b>	<b>17</b>
A.1	Status . . . . .	17
A.2	Comments . . . . .	17

# 1 Front

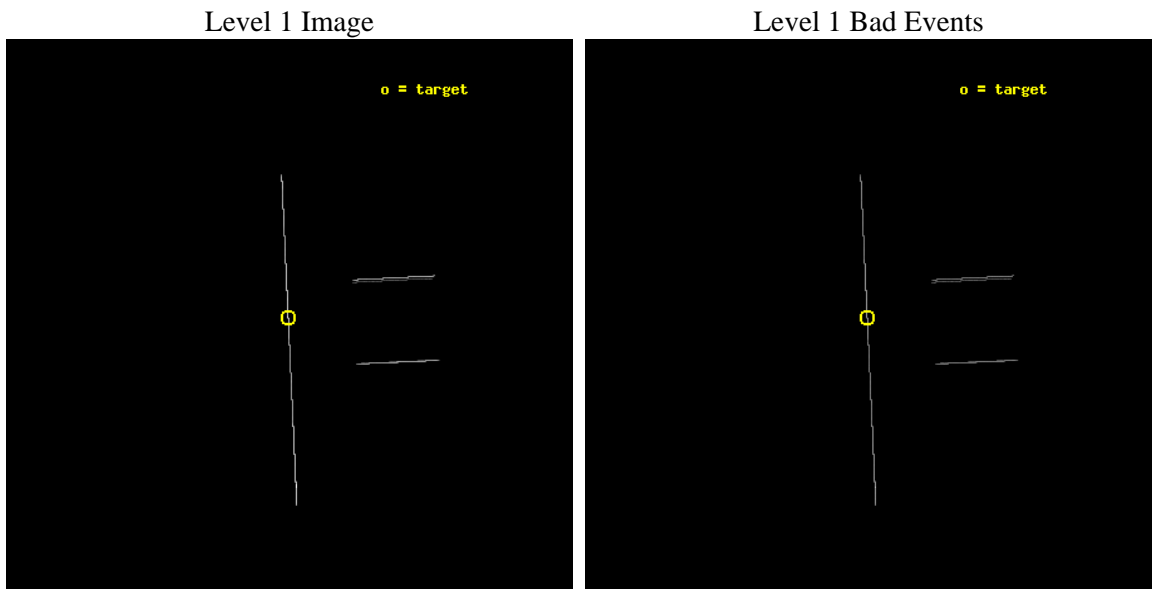
seq_num	500412	Sequence number
obs_id	4443	Observation id
title	ToO observations of SGR 1806-20 in an active state	Proposal title
observer	Dr. Peter Woods	Principal investigator
object	SGR 1806-20	Source name
ra_targ	272.16375	Observer's specified target RA [deg]
dec_targ	-20.410972	Observer's specified target Dec [deg]
ra_nom	272.16145523711	Nominal RA [deg]
dec_nom	-20.420412113732	Nominal Dec [deg]
roll_nom	267.30254955384	Nominal Roll [deg]
revision	3	Processing version of data
ontime	25121.25	Sum of GTIs [s]
livetime	25023.120117188	Livetime [s]
ontime2	25121.25	Sum of GTIs [s]
ontime3	25121.25	Sum of GTIs [s]
ontime5	25121.25	Sum of GTIs [s]
ontime6	25121.25	Sum of GTIs [s]
ontime7	25121.25	Sum of GTIs [s]
ontime8	25121.25	Sum of GTIs [s]
l2events	295817	Number of level 2 events



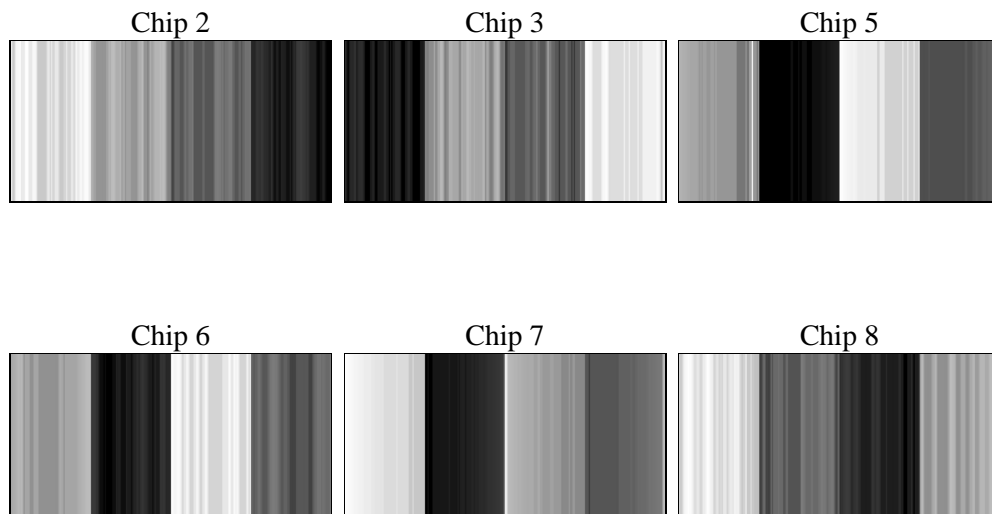
## 2 OBI

### 2.1 OBI

#### 2.1.1 Images



#### 2.1.2 Bias



### 2.1.3 Parameters

obi_num	1	Obi number	sched_exp_time	25000.000000	[s] Scheduled observation exposure time
ascdsver	8.4.5	Processing system revision	ontime	25121.25	Sum of GTIs [s]
caldbver	4.5.2	&#160	ontime2	25121.25	Sum of GTIs [s]
date	2012-11-01T11:04:50	Date and time of file creation	ontime3	25121.25	Sum of GTIs [s]
revision	3	Processing version of data	ontime5	25121.25	Sum of GTIs [s]
			ontime6	25121.25	Sum of GTIs [s]
			ontime7	25121.25	Sum of GTIs [s]
			ontime8	25121.25	Sum of GTIs [s]
			l1events	463324	Number of level 1 events

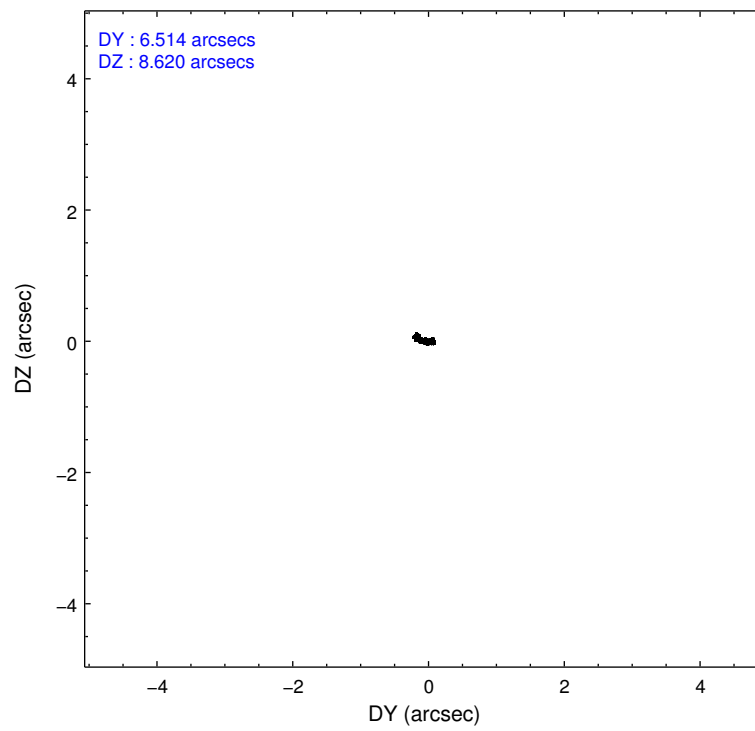
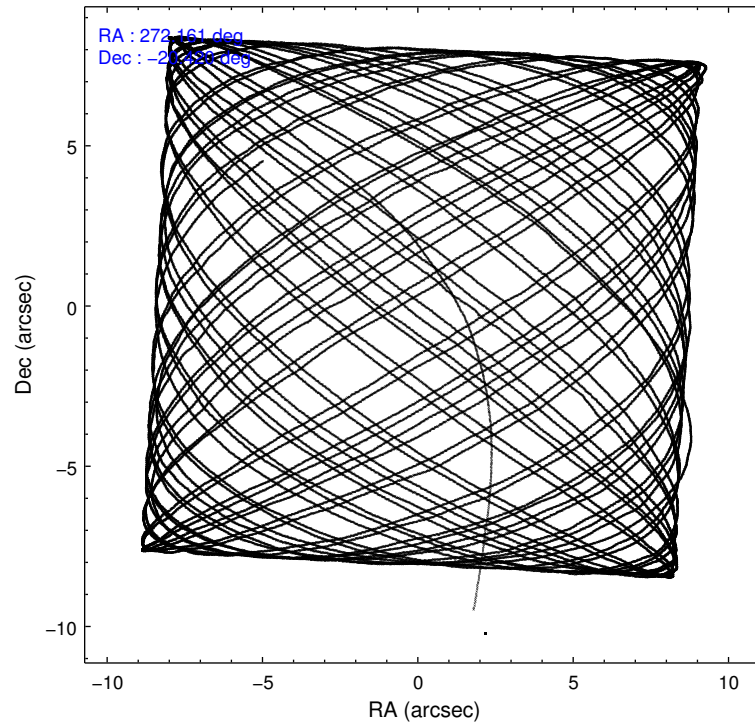
### 2.1.4 Events

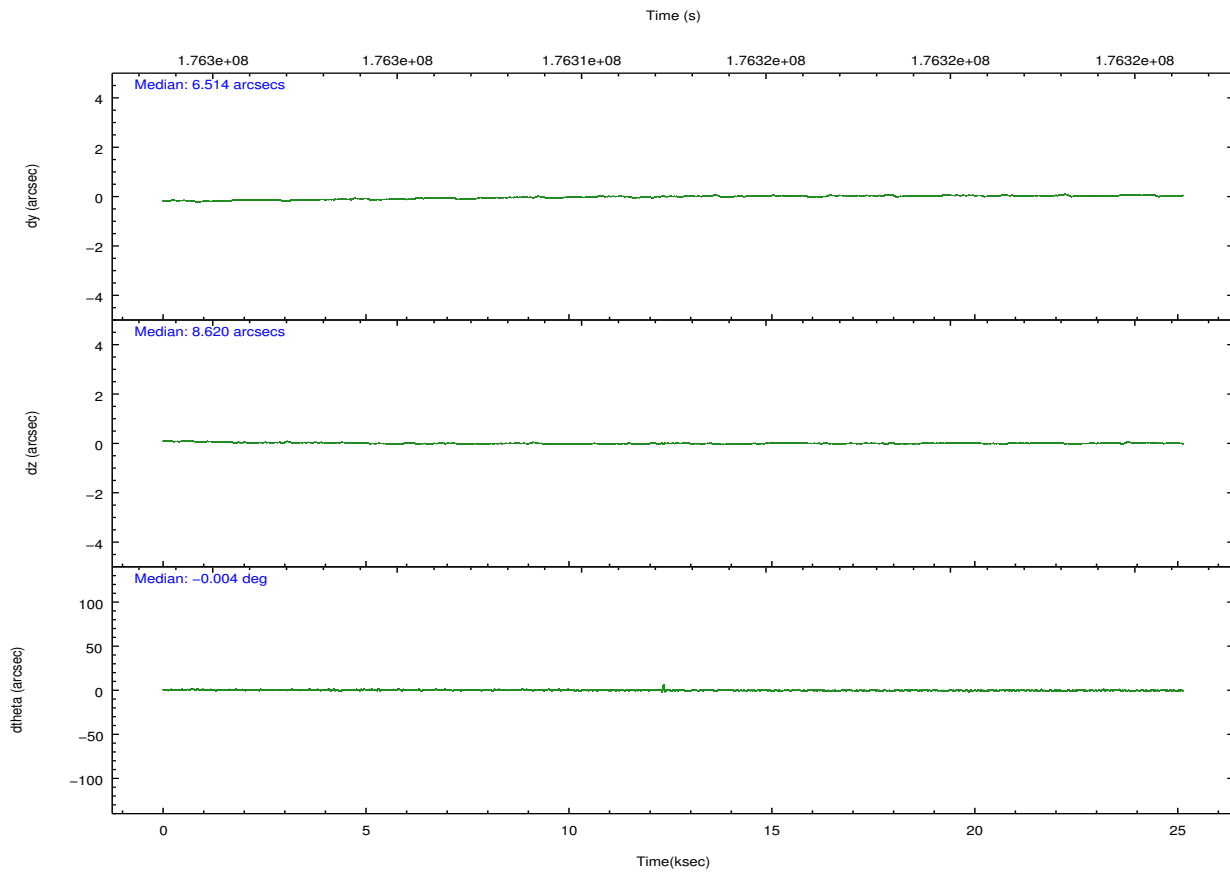
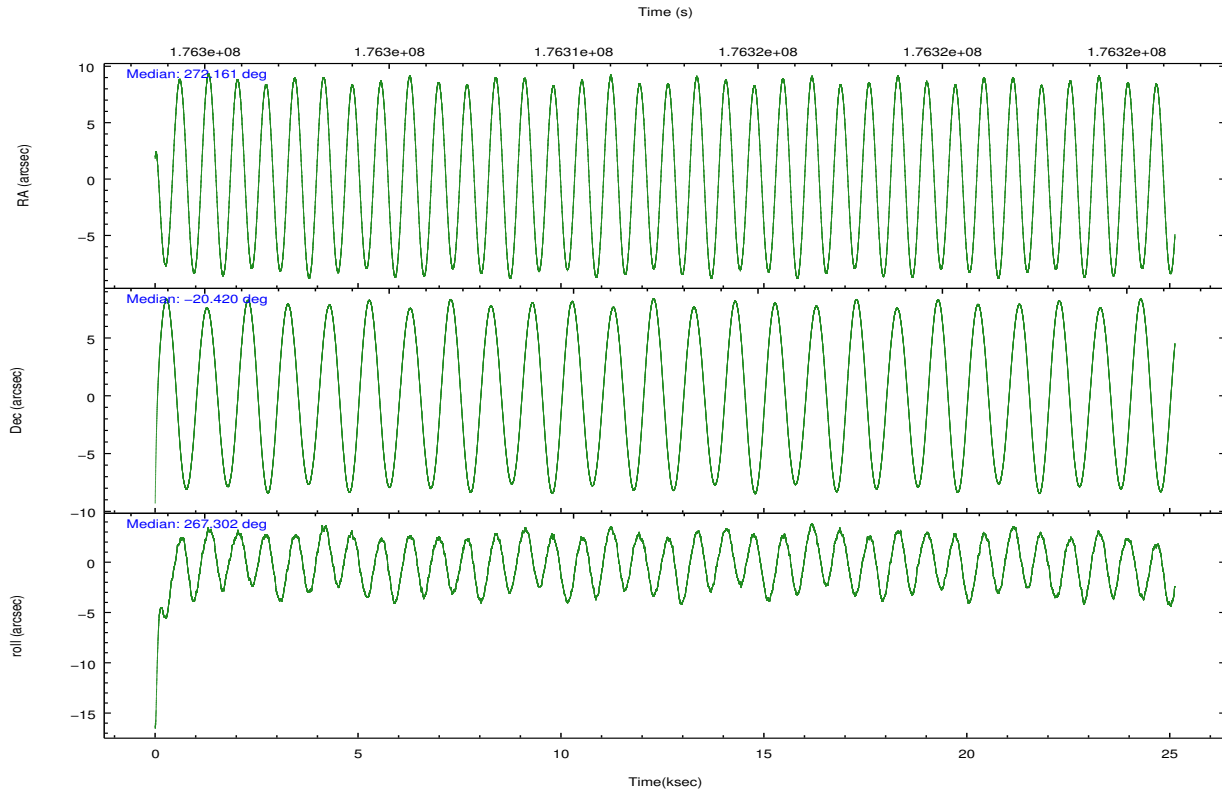
	ccd 2	ccd 3	ccd 5	ccd 6	ccd 7	ccd 8		ccd 2	ccd 3	ccd 5	ccd 6	ccd 7	ccd 8
level 1 events	33429	35681	166513	37170	122770	67761	grade 0 events	4132	3837	40084	3771	11116	11025
rejected events	7068	7738	22040	8427	23084	12107		12%	10%	24%	10%	9%	16%
rejected %	21%	21%	13%	22%	18%	17%	grade 1 events	141	115	238	147	281	238
								0%	0%	0%	0%	0%	0%
							grade 2 events	10646	11130	40955	12169	25617	18427
								31%	31%	24%	32%	20%	27%
							grade 3 events	3553	4356	3578	3653	8196	6784
								10%	12%	2%	9%	6%	10%
							grade 4 events	3602	3766	3394	3480	8307	6435
								10%	10%	2%	9%	6%	9%
							grade 5 events	5755	6270	15266	6938	18684	9428
								17%	17%	9%	18%	15%	13%
							grade 6 events	5600	6207	62998	7012	50569	15424
								16%	17%	37%	18%	41%	22%
							grade 7 events	0	0	0	0	0	0
								0%	0%	0%	0%	0%	0%

## 2.2 Compared Parameters

Parameter	Planned	Actual	Parameter	Planned	Actual
Instrument	ACIS	ACIS	Obspar format version number	7	7
Detector	ACIS-235678	ACIS-235678	Obspar file type	PREDICTED	ACTUAL
Grating	NONE	NONE	Obspar update status	NONE	UPDATED
Data mode	CC33_FAINT	CC33_FAINT	Number of optional ACIS chips dropped	0	0
Observation mode	POINTING	POINTING	On-chip summing requested	N	N
[deg] Pointing RA	272.147787	272.1614552371056	Subarray requested	NONE	NONE
[deg] Pointing Dec	-20.396371	-20.42041211373184	Alternating exposures requested	N	N
[deg] Pointing Roll	267.141161	267.3025495538387	[s] Primary exposure time	0.000000	0
[mm] SIM focus pos	-0.684267	-0.6828225247311905			
[mm] SIM defocus	0	0.001444936568705701			
[mm] SIM translation stage pos	-190.132523	-190.1425803651734			
[mm] SIM translation stage offset	0	0.01005778216563158			
[s] Observation start time (MET)	176300048.184000	176298757.11269			
Observation start date	2003-08-03T12:13:04	2003-08-03T11:52:37			
[s] Observation end time (MET)	176325048.184000	176325605.45133			
Observation end date	2003-08-03T19:09:44	2003-08-03T19:20:05			
Read mode	CONTINUOUS	CONTINUOUS			

## 2.3 Aspect



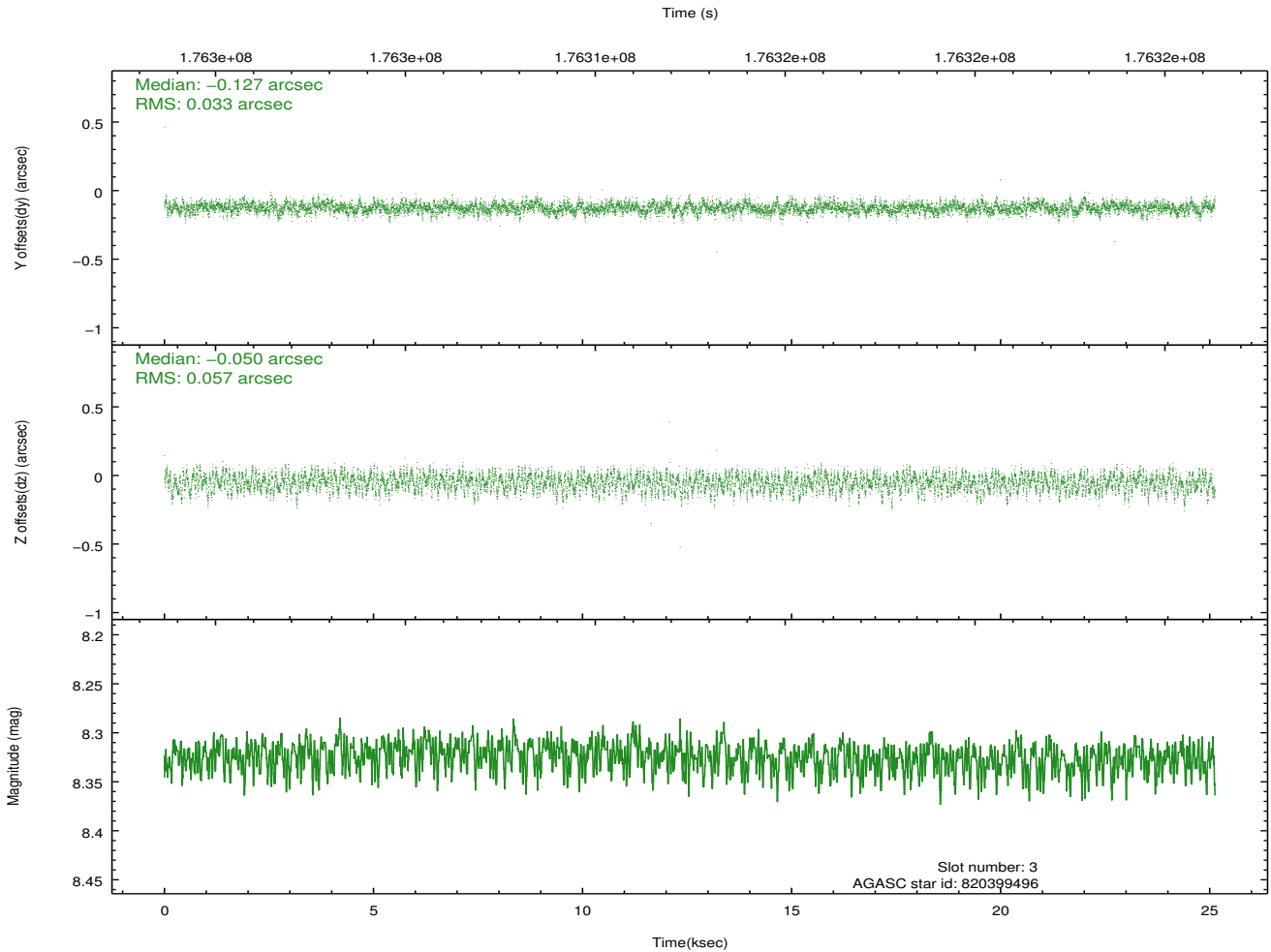
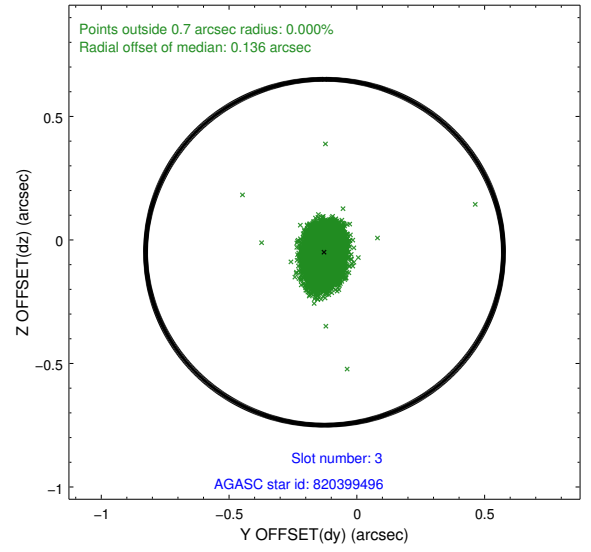
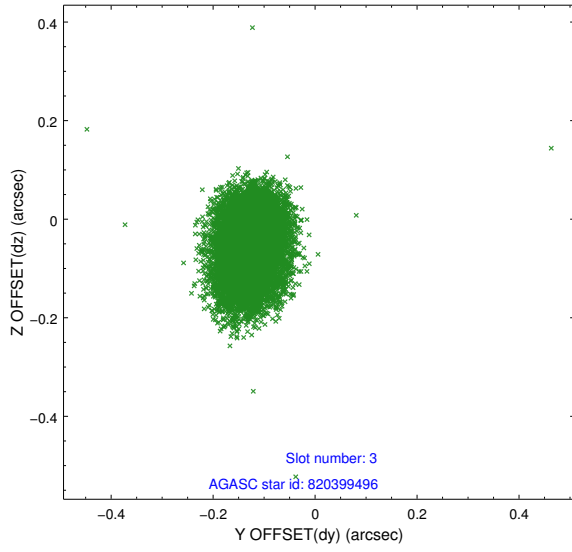


### Slot Statistics

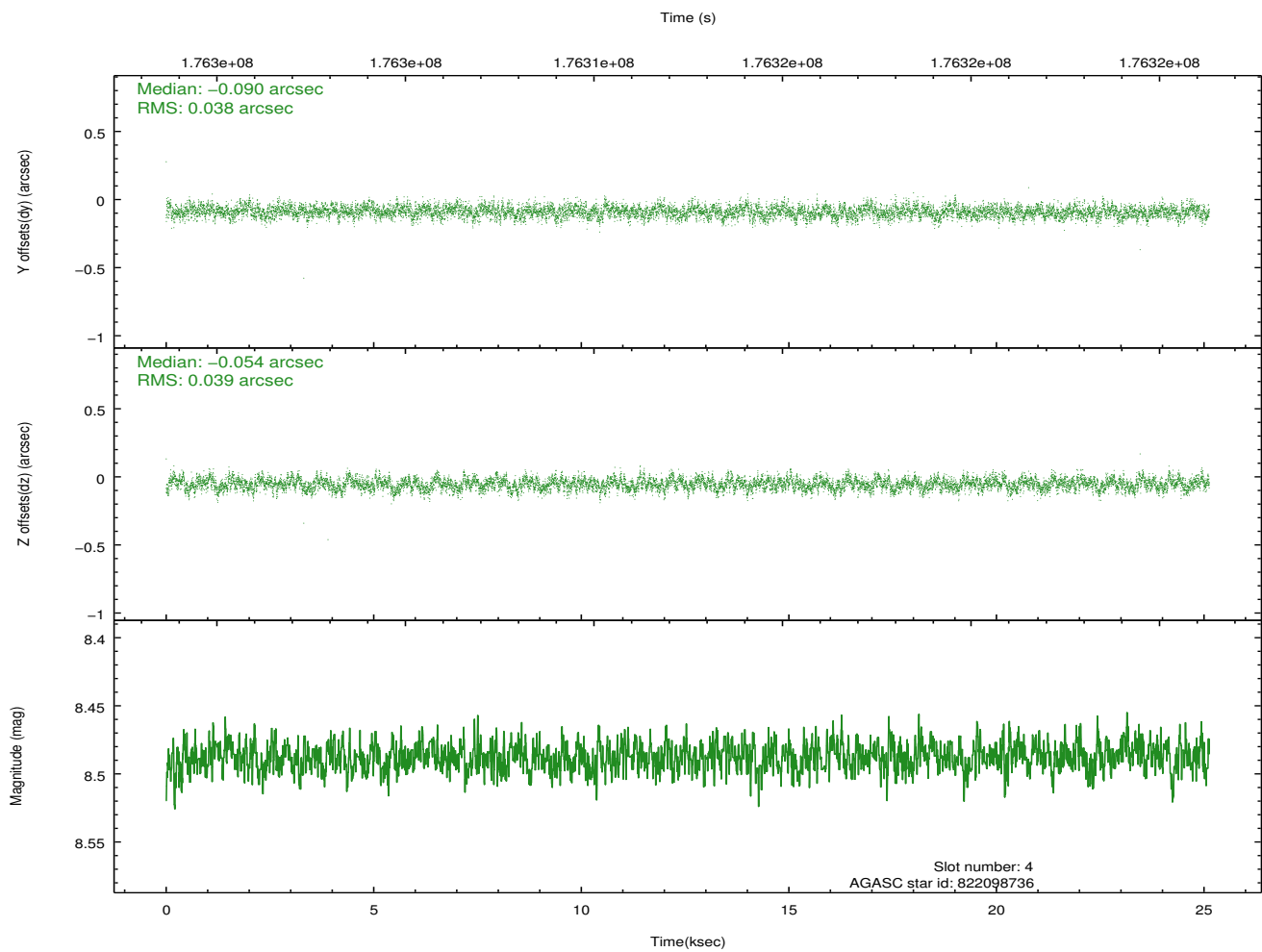
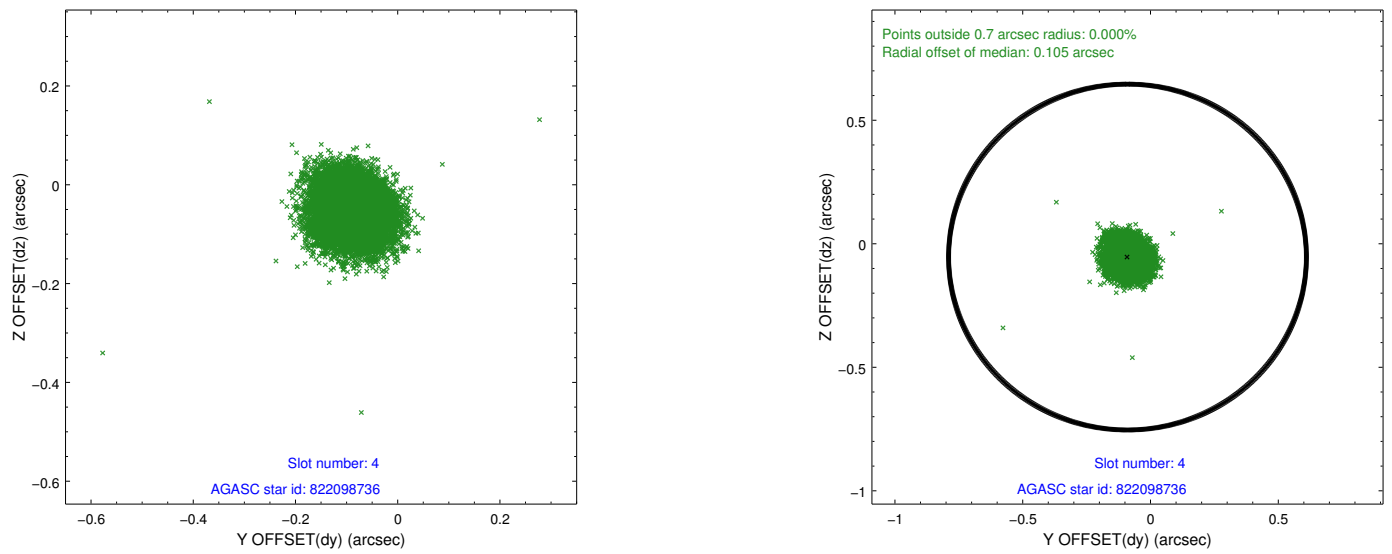
slot	status	id	mag	n_pts	med_dy	med_dz	dr1	dr2	ra	dec	mean_y	mean_z
0	FID	ACIS-S-2	7.10	6126	-0.052	-0.024	0.006	0.010	0.000000	0.000000	-759.28	-1729.80
1	FID	ACIS-S-4	7.20	6129	0.042	0.033	0.006	0.010	0.000000	0.000000	2154.04	178.60
2	FID	ACIS-S-6	7.35	6129	-0.017	-0.002	0.007	0.012	0.000000	0.000000	402.90	816.10
3	GUIDE	820399496	8.32	12252	-0.127	-0.050	0.070	0.116	271.495152	-19.953854	-1476.49	-2284.86
4	GUIDE	822098736	8.49	12252	-0.090	-0.054	0.058	0.093	272.269355	-19.875225	-1894.12	317.46
5	GUIDE	822616024	8.43	12256	0.151	0.020	0.052	0.084	272.218514	-20.919122	1868.10	331.82
6	GUIDE	822617304	8.97	12250	0.110	0.103	0.065	0.105	272.421826	-20.831304	1519.13	999.40
7	GUIDE	822098528	9.18	12249	-0.044	-0.014	0.066	0.108	272.282761	-19.863413	-1938.53	361.01

## 2.4 Star Slots

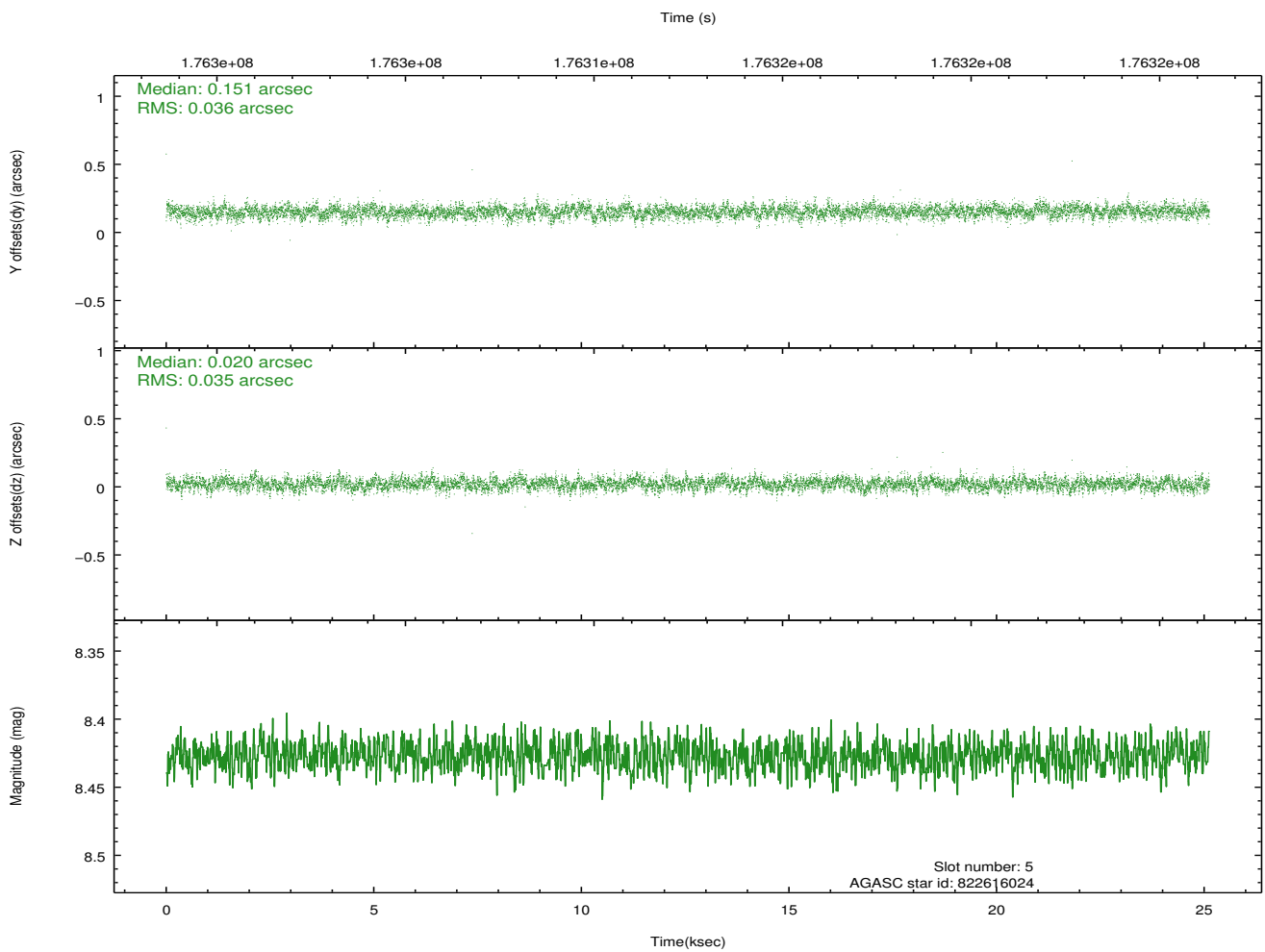
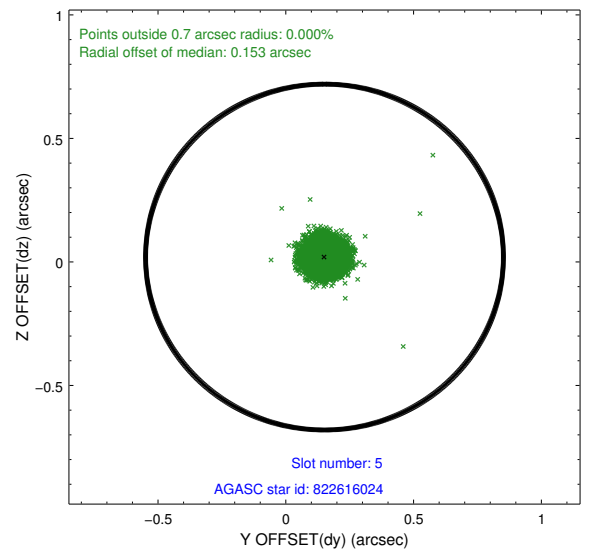
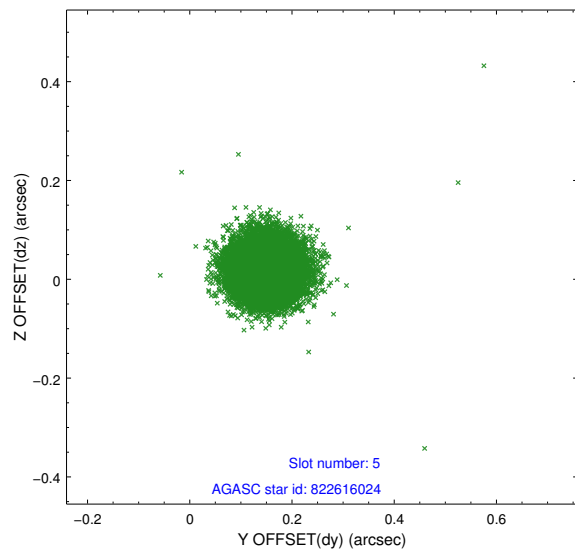
### 2.4.1 Slot 3



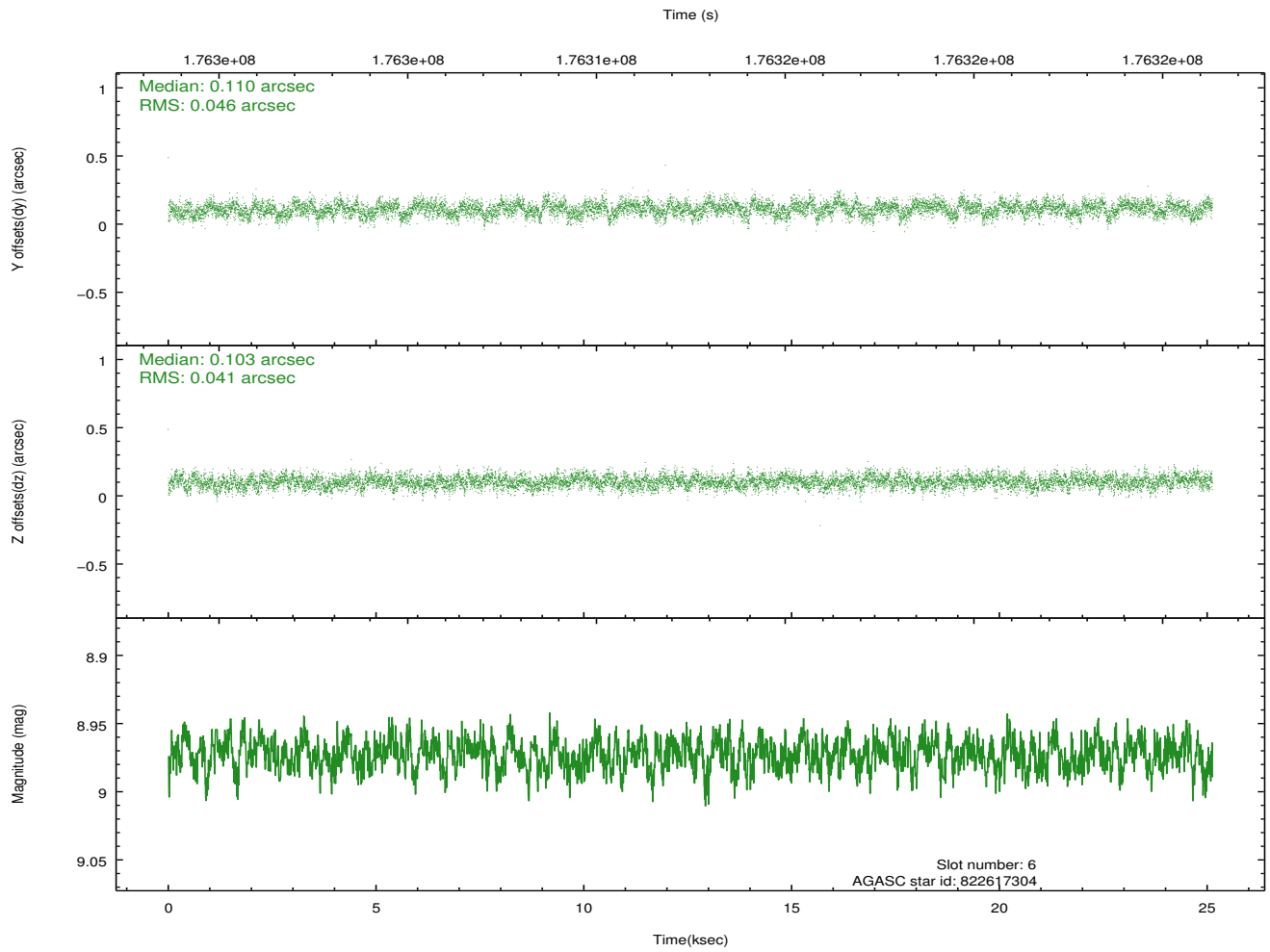
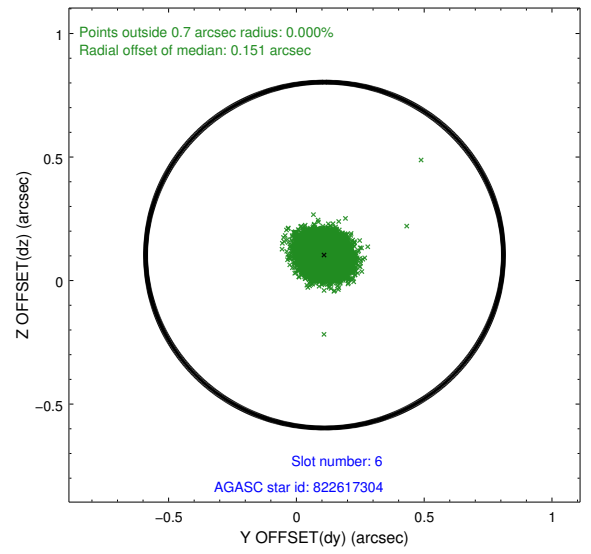
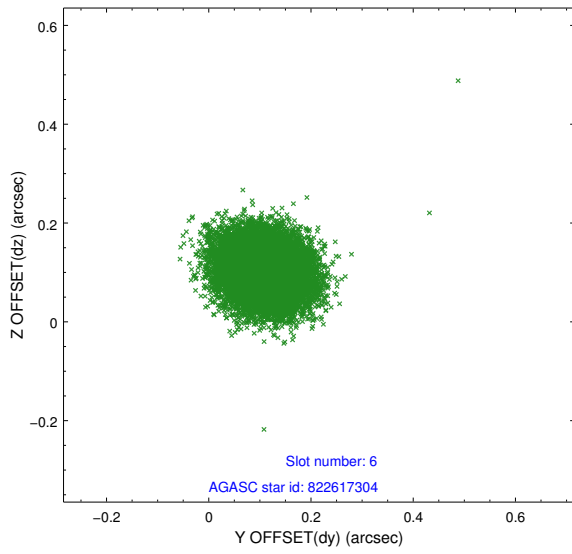
## 2.4.2 Slot 4



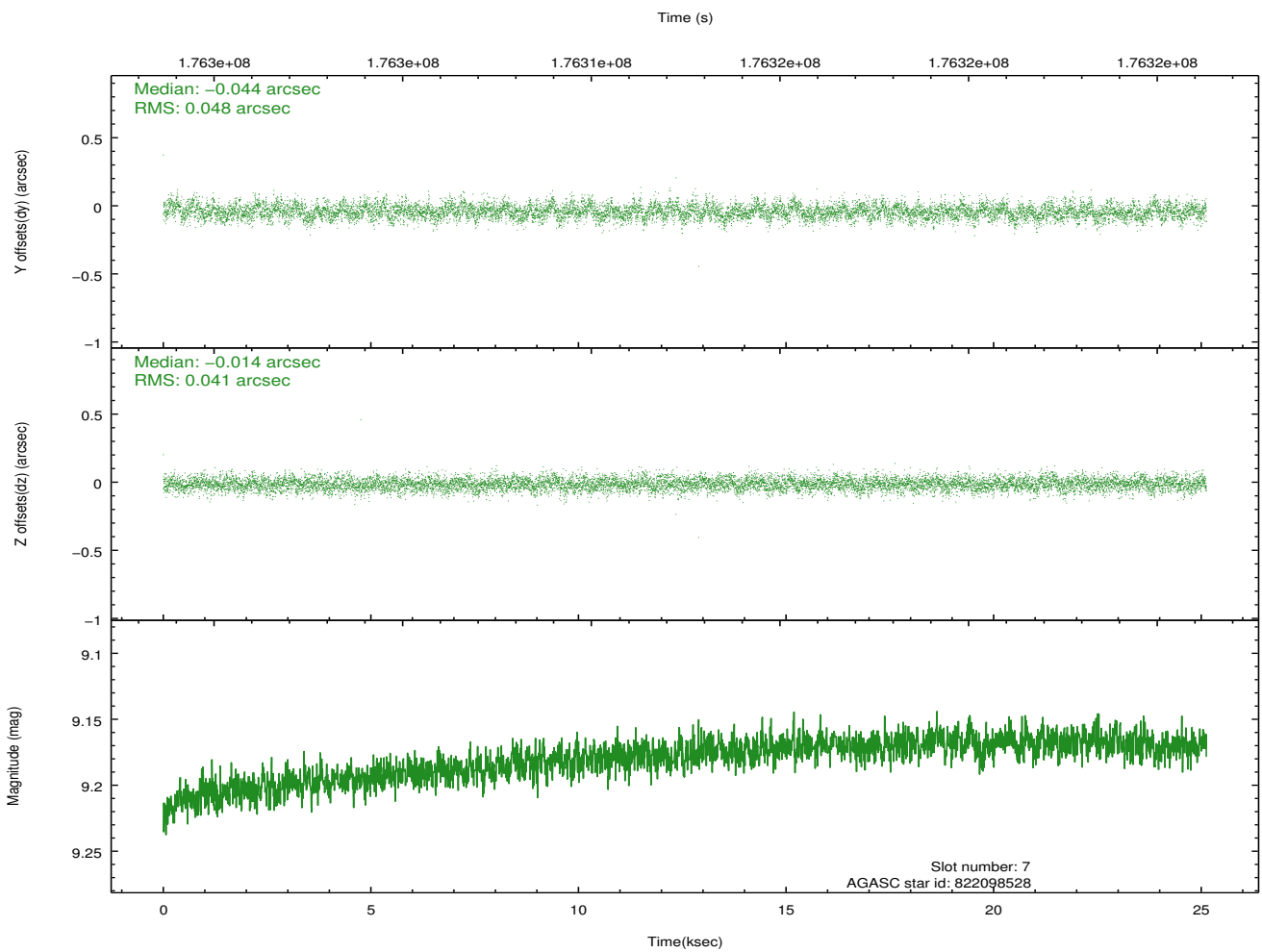
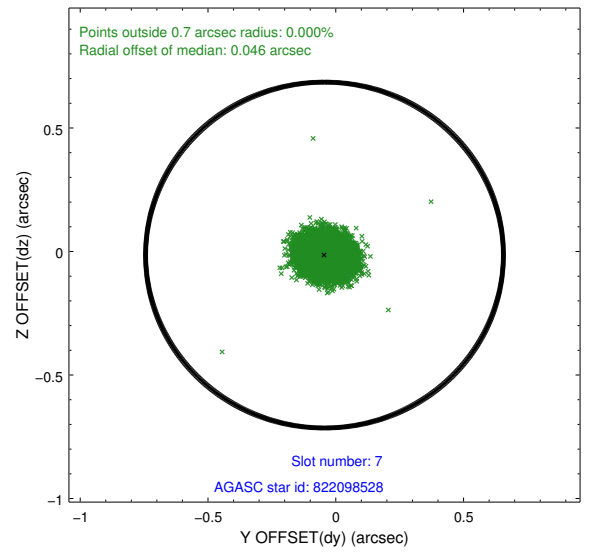
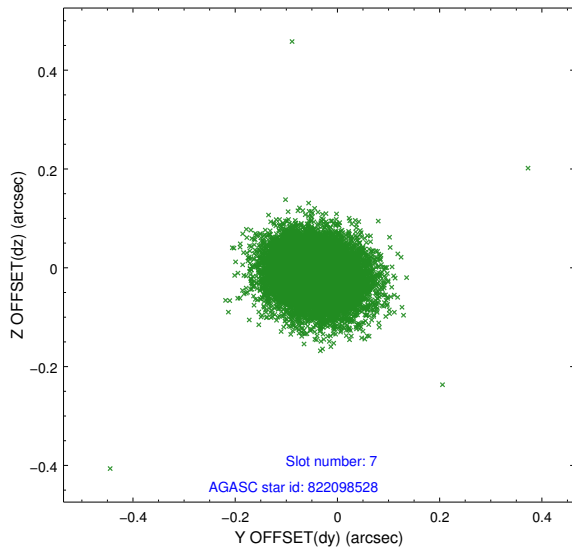
### 2.4.3 Slot 5



### 2.4.4 Slot 6

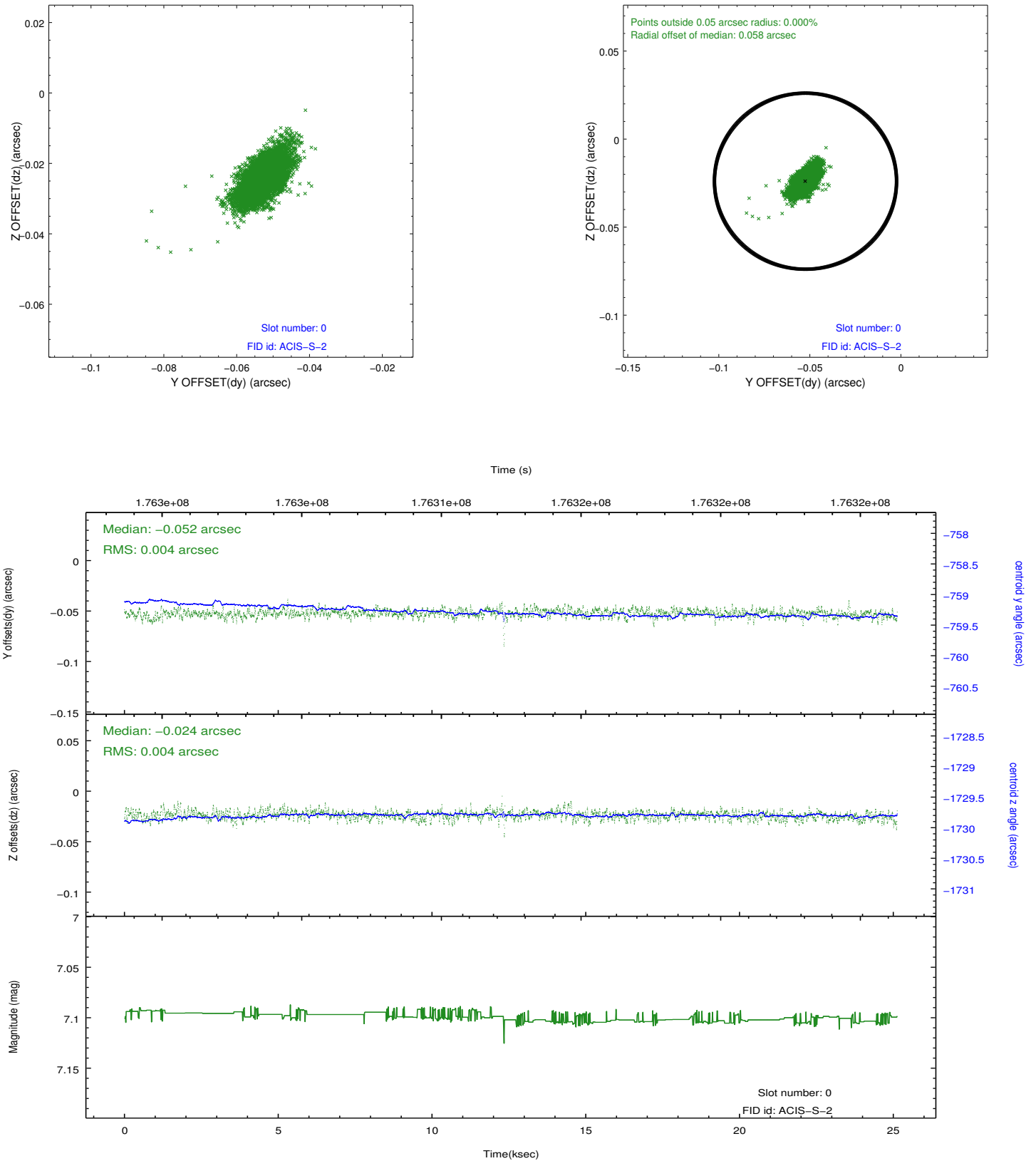


### 2.4.5 Slot 7

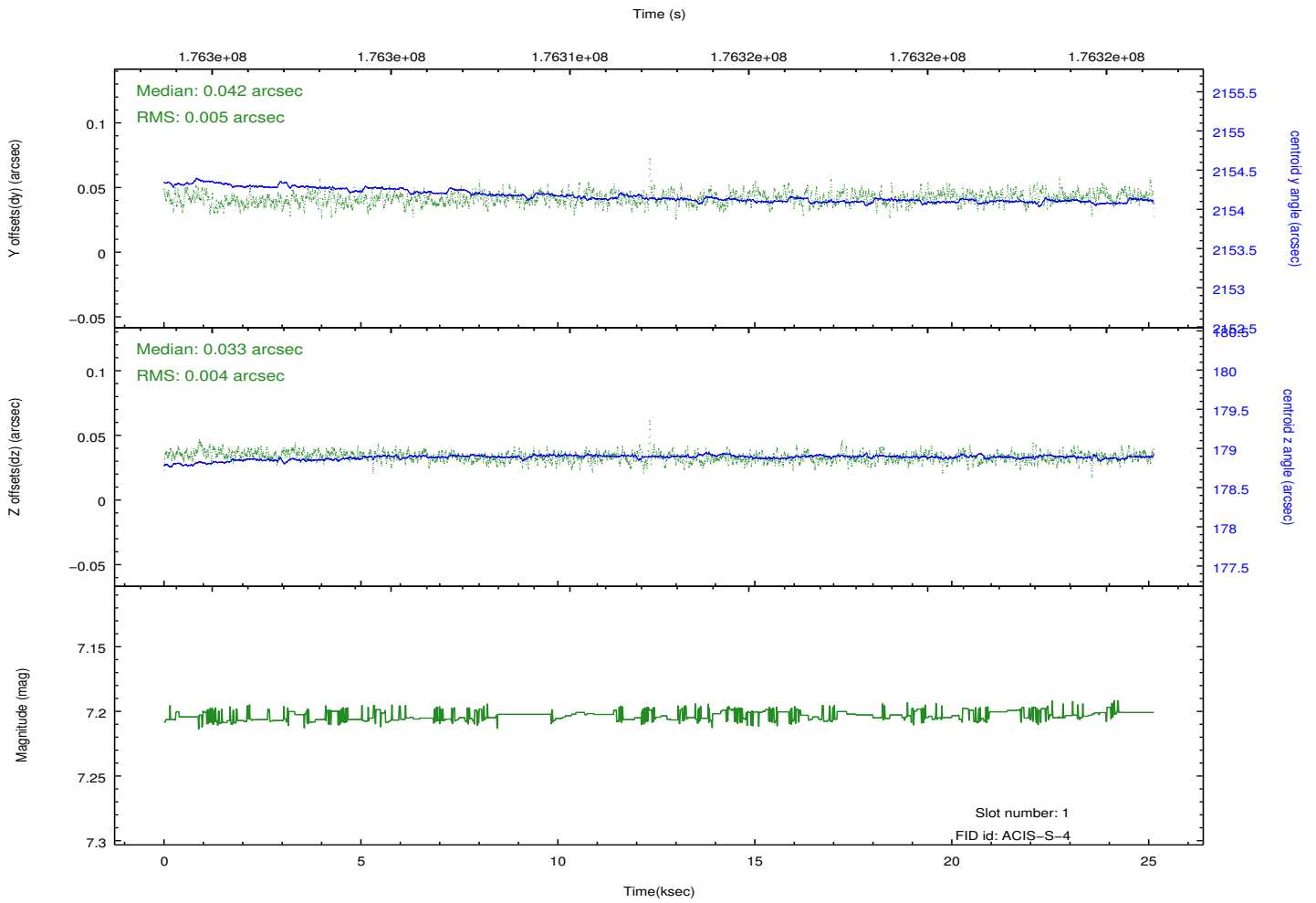
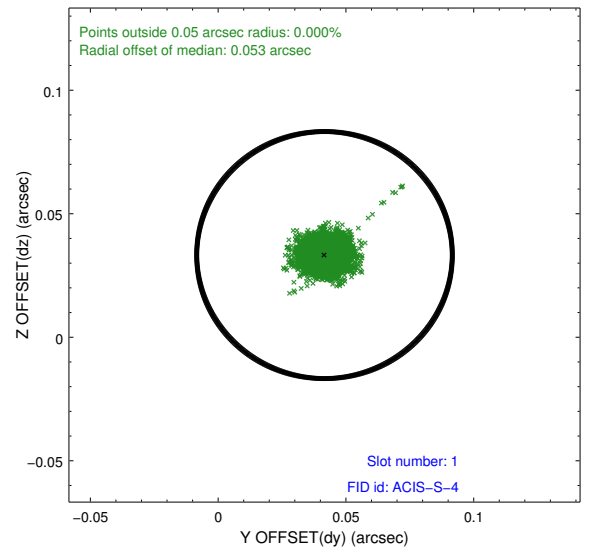
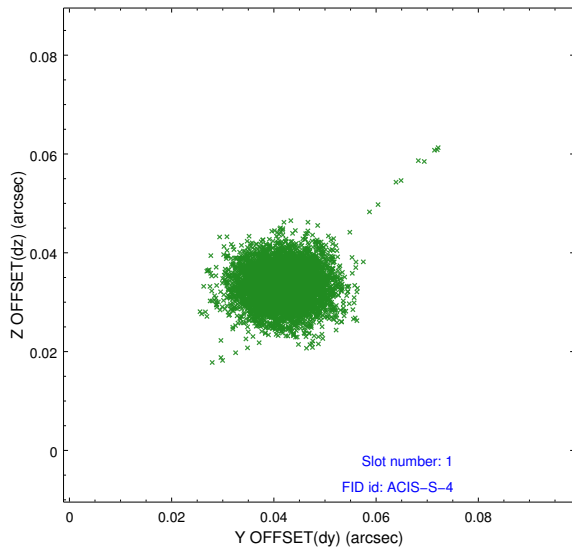


## 2.5 FID Slots

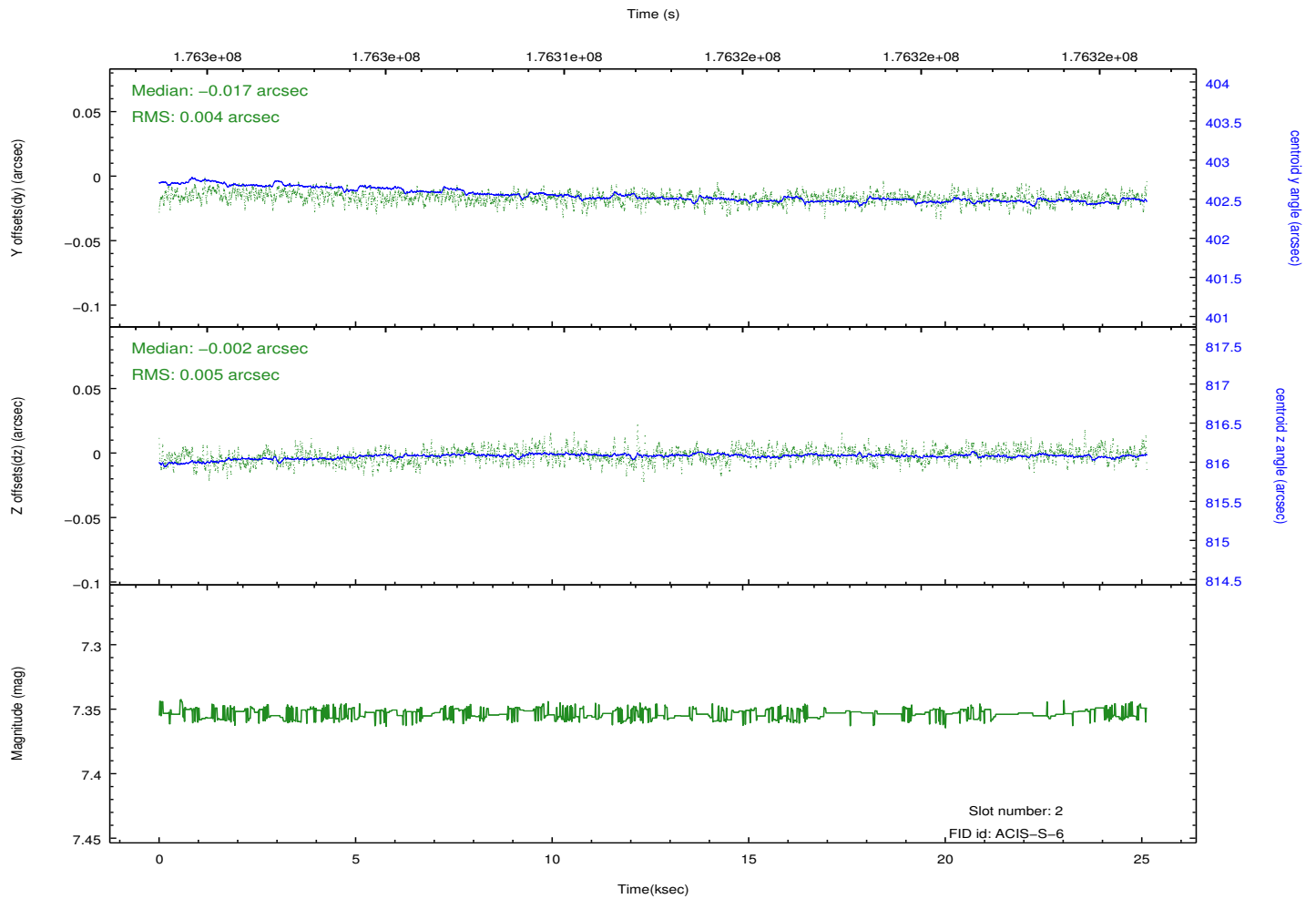
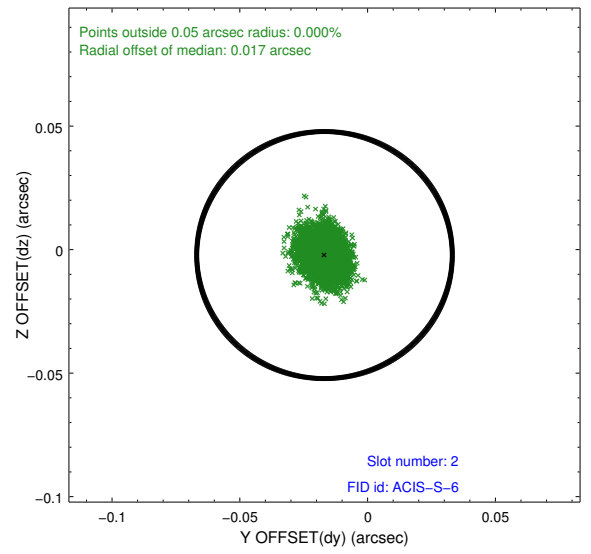
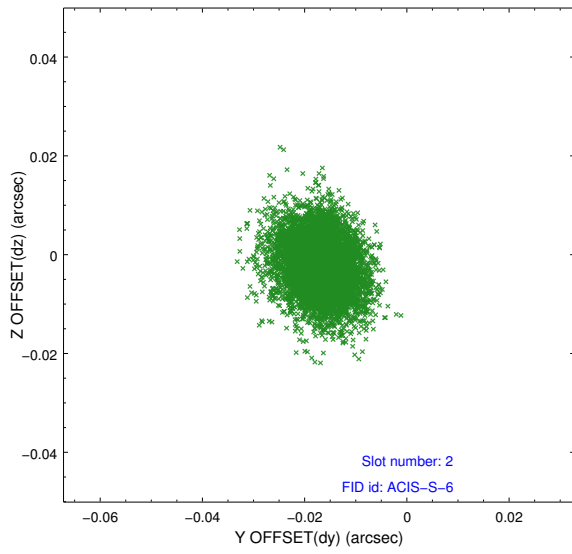
### 2.5.1 Slot 0



## 2.5.2 Slot 1



### 2.5.3 Slot 2



# A Summary

## A.1 Status

V&V Scientist	Joy Nichols
V&V Date (YYYY-MM-DD)	2012.11.07
V&V Edition	1
V&V Disposition and Status	OK
V&V Charge Time	25.125

## A.2 Comments