

V&V Reference Report

L2 ASCDS Version : 8.5

Observation 4643 - L2 Version 4
Chandra X-Ray Center

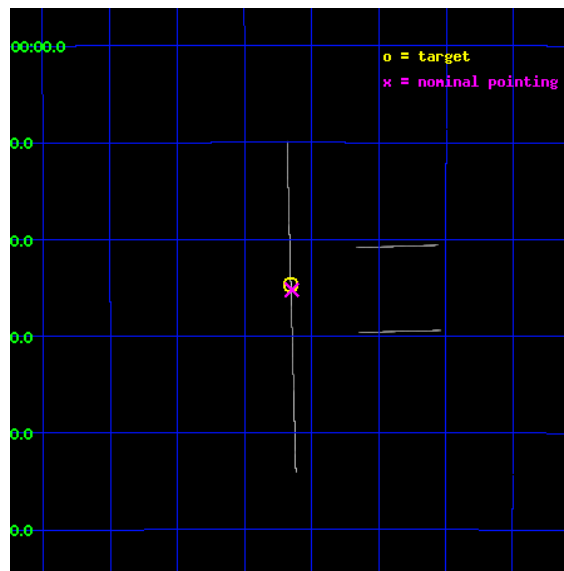
L2 Processing Date : Dec 7 2012

Contents

1	Front	2
2	OBI	3
2.1	OBI	3
2.1.1	Images	3
2.1.2	Bias	3
2.1.3	Parameters	4
2.1.4	Events	4
2.2	Compared Parameters	5
2.3	Aspect	6
2.4	Star Slots	9
2.4.1	Slot 3	9
2.4.2	Slot 4	10
2.4.3	Slot 5	11
2.4.4	Slot 6	12
2.4.5	Slot 7	13
2.5	FID Slots	14
2.5.1	Slot 0	14
2.5.2	Slot 1	15
2.5.3	Slot 2	16
A	Summary	17
A.1	Status	17
A.2	Comments	17

1 Front

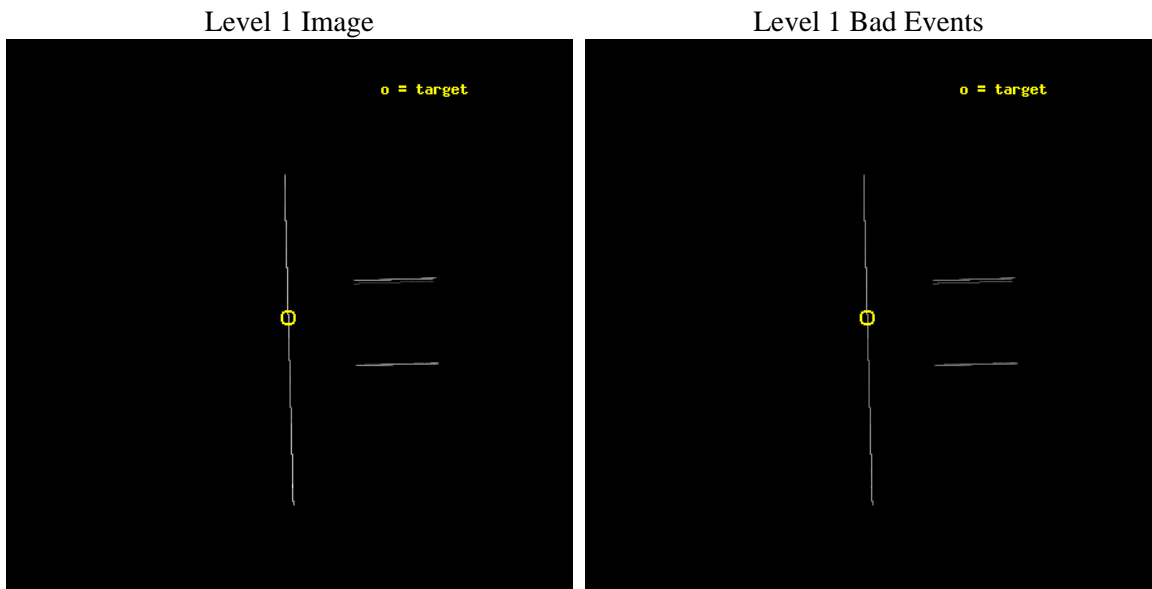
seq_num	500462	Sequence number
obs_id	4643	Observation id
title	ToO Observations of Soft Gamma Repeaters	Proposal title
observer	Dr. Peter Woods	Principal investigator
object	SGR 1806-20	Source name
ra_targ	272.16375	Observer's specified target RA [deg]
dec_targ	-20.410972	Observer's specified target Dec [deg]
ra_nom	272.16165544698	Nominal RA [deg]
dec_nom	-20.420451672118	Nominal Dec [deg]
roll_nom	268.40720939026	Nominal Roll [deg]
revision	4	Processing version of data
ontime	35157.75	Sum of GTIs [s]
livetime	35020.415039062	Livetime [s]
ontime2	35157.75	Sum of GTIs [s]
ontime3	35157.75	Sum of GTIs [s]
ontime5	35157.75	Sum of GTIs [s]
ontime6	35157.75	Sum of GTIs [s]
ontime7	35157.75	Sum of GTIs [s]
ontime8	35157.75	Sum of GTIs [s]
l2events	532761	Number of level 2 events



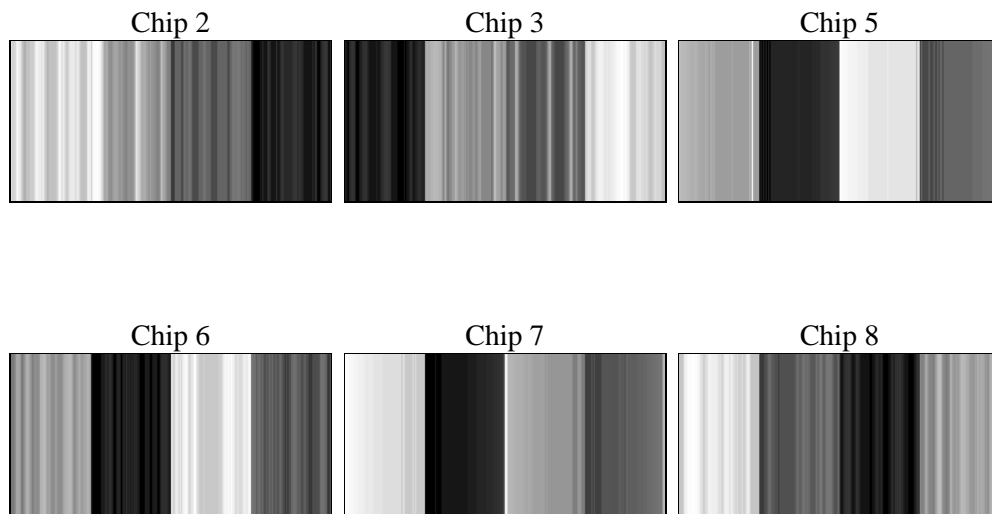
2 OBI

2.1 OBI

2.1.1 Images



2.1.2 Bias



2.1.3 Parameters

obi_num	0	Obi number	sched_exp_time	35000.793000	[s] Scheduled observation exposure time
ascdsver	8.5	Processing system revision	ontime	35157.75	Sum of GTIs [s]
caldbver	4.5.4	 	ontime2	35157.75	Sum of GTIs [s]
date	2012-12-07T16:52:02	Date and time of file creation	ontime3	35157.75	Sum of GTIs [s]
revision	4	Processing version of data	ontime5	35157.75	Sum of GTIs [s]
			ontime6	35157.75	Sum of GTIs [s]
			ontime7	35157.75	Sum of GTIs [s]
			ontime8	35157.75	Sum of GTIs [s]
			l1events	832033	Number of level 1 events

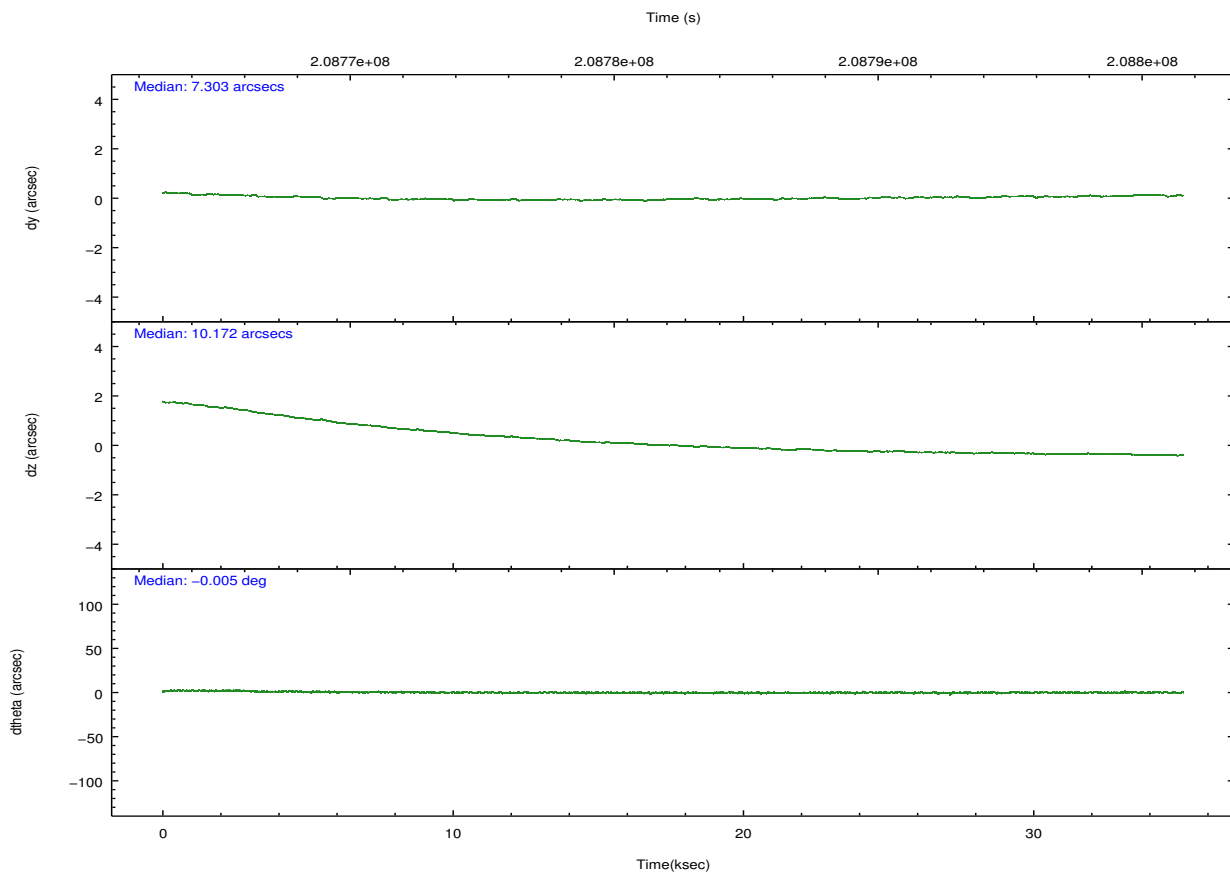
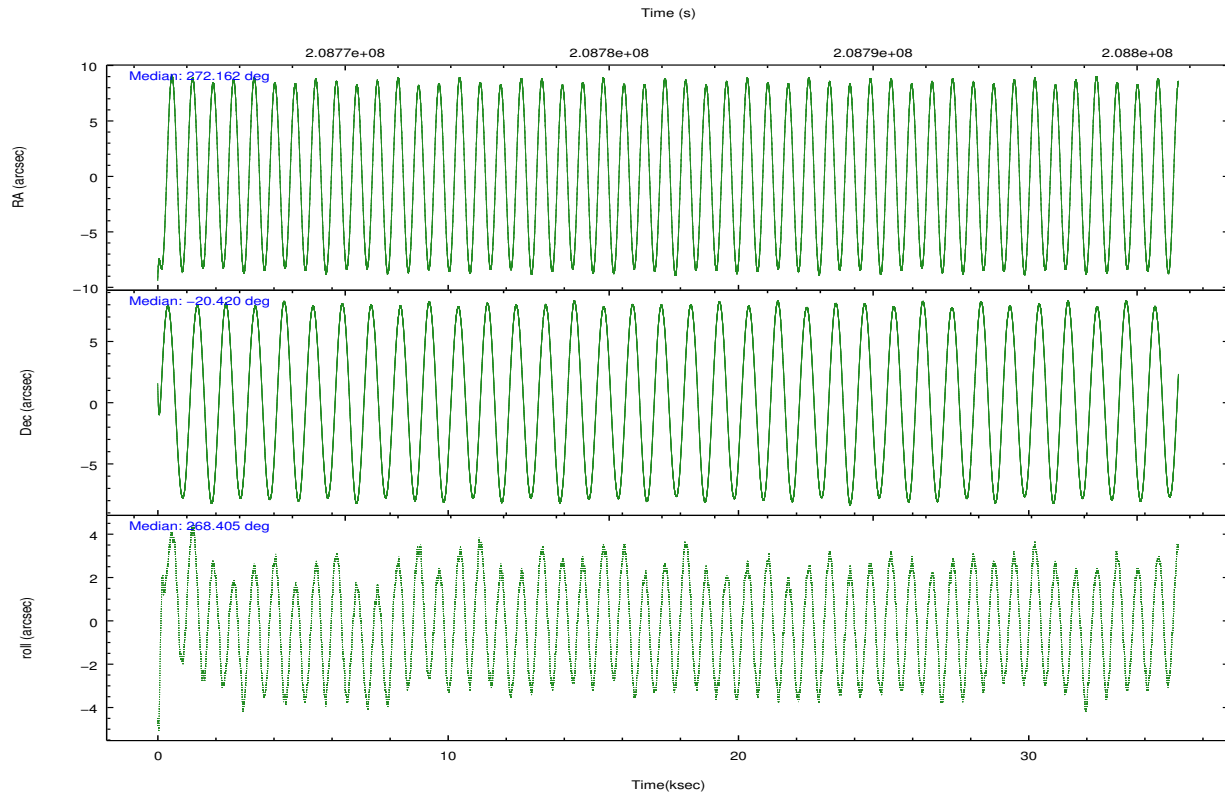
2.1.4 Events

	ccd 2	ccd 3	ccd 5	ccd 6	ccd 7	ccd 8		ccd 2	ccd 3	ccd 5	ccd 6	ccd 7	ccd 8
level 1 events	58222	62709	310691	62708	221243	116460	grade 0 events	7354	7385	85243	6120	21197	19614
rejected events	11609	12944	34599	12635	35610	18585		12%	11%	27%	9%	9%	16%
rejected %	19%	20%	11%	20%	16%	15%	grade 1 events	258	304	435	204	453	443
								0%	0%	0%	0%	0%	0%
							grade 2 events	19225	20483	78117	22114	47290	32669
								33%	32%	25%	35%	21%	28%
							grade 3 events	5697	6796	5841	5802	15149	11002
								9%	10%	1%	9%	6%	9%
							grade 4 events	5861	5925	5506	5532	14635	10826
								10%	9%	1%	8%	6%	9%
							grade 5 events	10294	11340	25223	11134	31133	15782
								17%	18%	8%	17%	14%	13%
							grade 6 events	9533	10476	110326	11802	91386	26124
								16%	16%	35%	18%	41%	22%
							grade 7 events	0	0	0	0	0	0
								0%	0%	0%	0%	0%	0%

2.2 Compared Parameters

Parameter	Planned	Actual	Parameter	Planned	Actual
Instrument	ACIS	ACIS	Obspar format version number	7	7
Detector	ACIS-235678	ACIS-235678	Obspar file type	PREDICTED	ACTUAL
Grating	NONE	NONE	Obspar update status	NONE	UPDATED
Data mode	CC33_FAINT	CC33_FAINT	Number of optional ACIS chips dropped	0	0
Observation mode	POINTING	POINTING	On-chip summing requested	N	N
[deg] Pointing RA	272.147496	272.161655446978	Subarray requested	NONE	NONE
[deg] Pointing Dec	-20.396663	-20.42045167211777	Alternating exposures requested	N	N
[deg] Pointing Roll	268.245639	268.4072093902612	[s] Primary exposure time	0.000000	0
[mm] SIM focus pos	-0.684267	-0.6828225247311905			
[mm] SIM defocus	0	0.001444936568705701			
[mm] SIM translation stage pos	-190.132523	-190.1425803651734			
[mm] SIM translation stage offset	0	0.01005778216563158			
[s] Observation start time (MET)	208764811.184000	208763726.51742			
Observation start date	2004-08-13T06:12:27	2004-08-13T05:55:26			
[s] Observation end time (MET)	208799812.184000	208800038.68153			
Observation end date	2004-08-13T15:55:48	2004-08-13T16:00:38			
Read mode	CONTINUOUS	CONTINUOUS			

2.3 Aspect

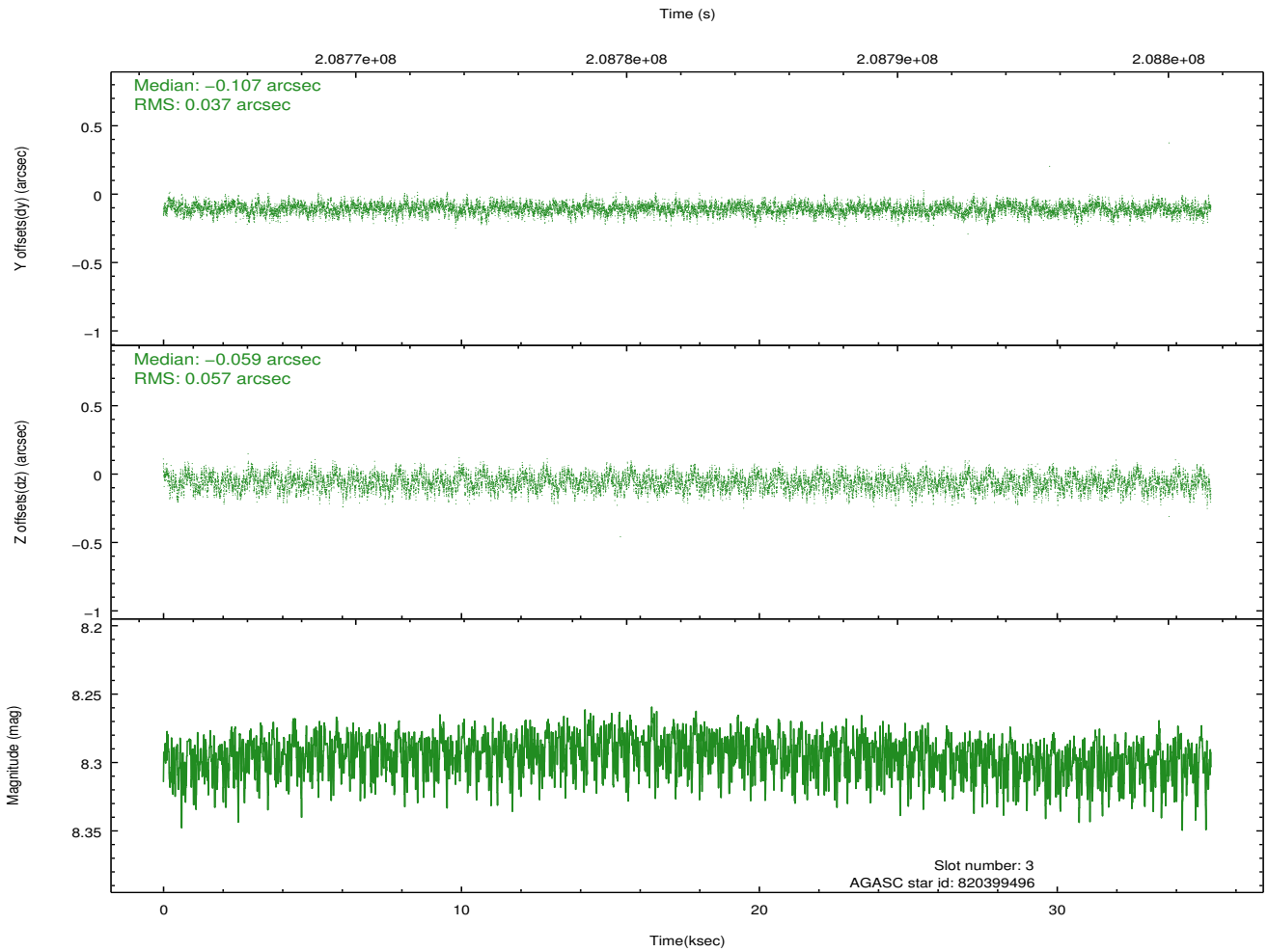
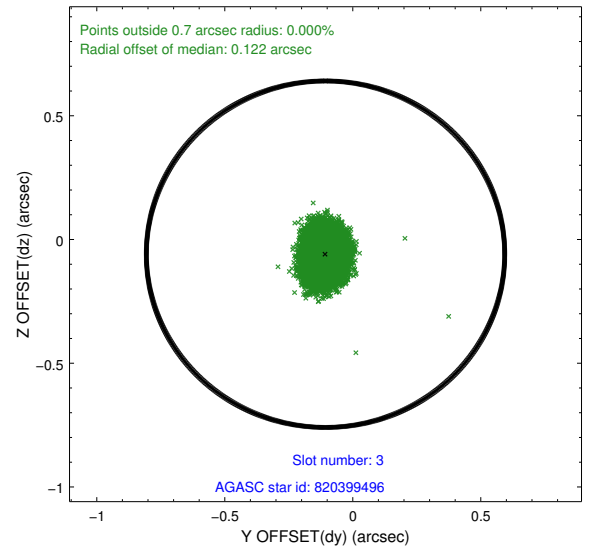
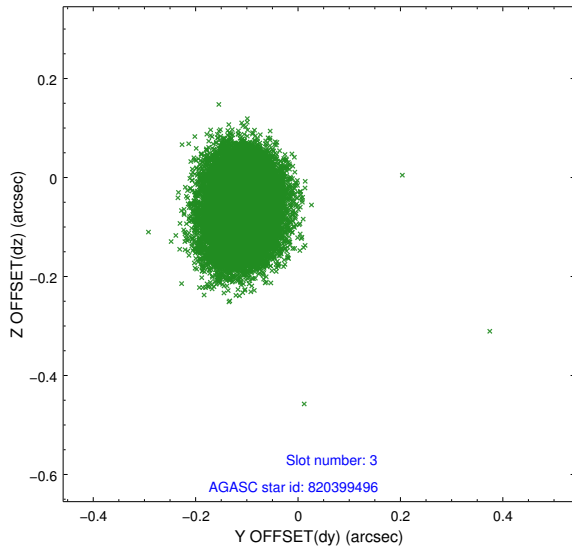


Slot Statistics

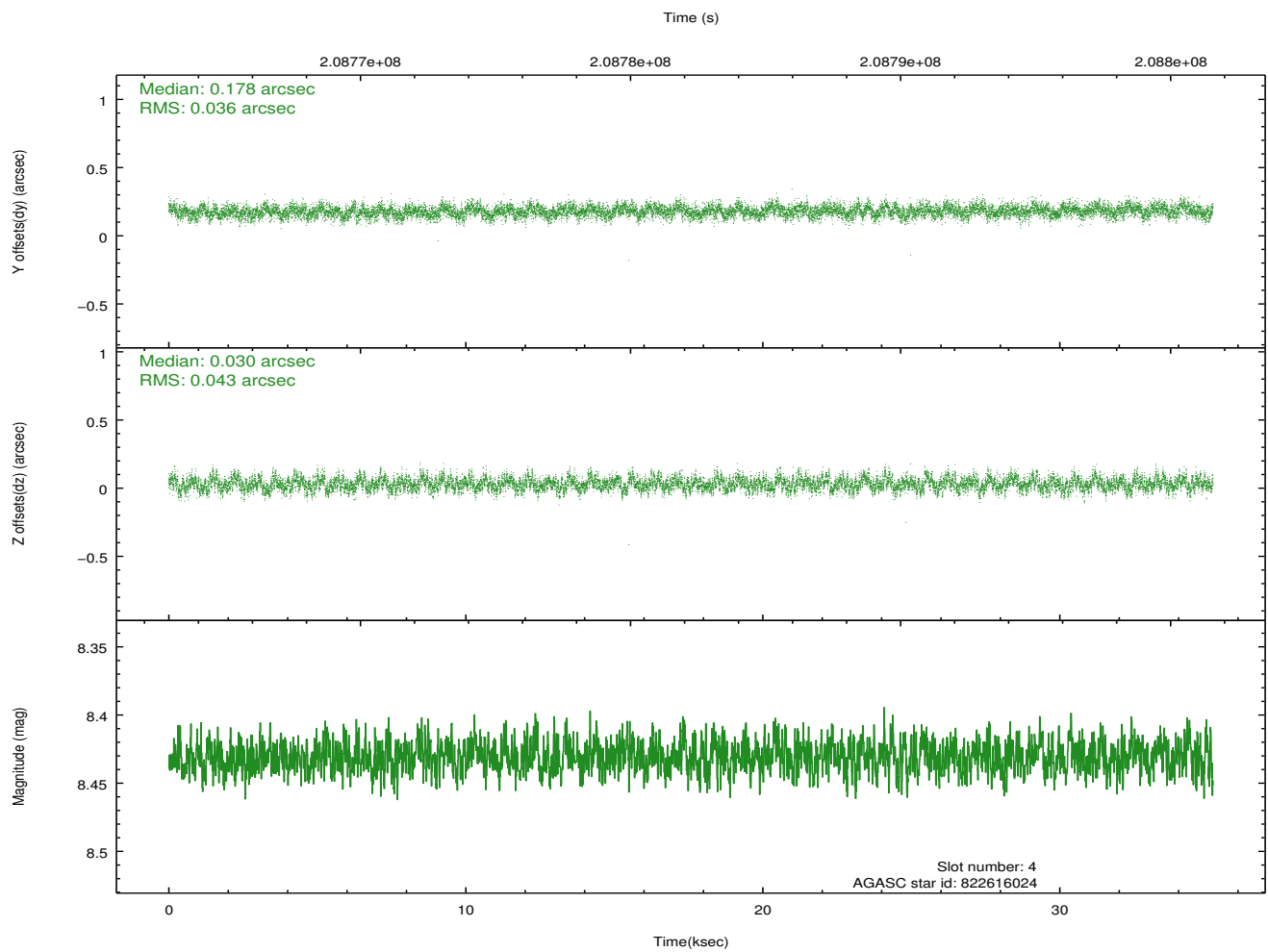
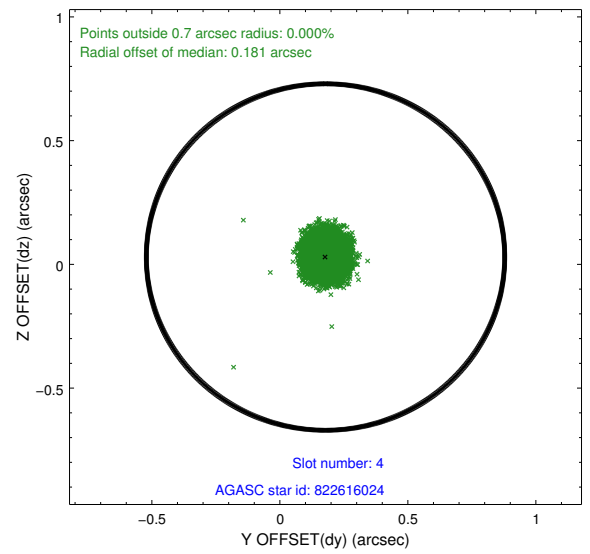
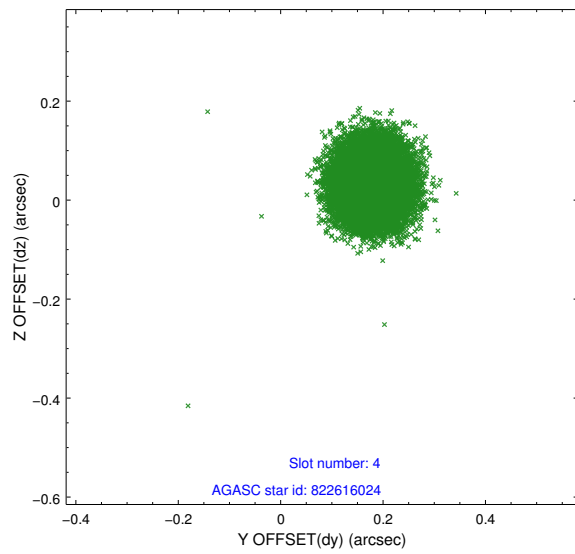
slot	status	id	mag	n_pts	med_dy	med_dz	dr1	dr2	ra	dec	mean_y	mean_z
0	FID	ACIS-S-2	7.11	8577	-0.060	-0.041	0.009	0.026	0.000000	0.000000	-760.11	-1731.66
1	FID	ACIS-S-4	7.20	8577	0.060	0.026	0.010	0.023	0.000000	0.000000	2153.24	176.88
2	FID	ACIS-S-6	7.35	8577	-0.029	0.024	0.010	0.021	0.000000	0.000000	401.91	814.30
3	GUIDE	820399496	8.30	17150	-0.107	-0.059	0.073	0.116	271.495152	-19.953854	-1521.28	-2255.11
4	GUIDE	822616024	8.43	17152	0.178	0.030	0.060	0.096	272.218514	-20.919122	1873.15	296.60
5	GUIDE	822617304	8.97	17150	0.139	0.111	0.079	0.124	272.421826	-20.831304	1536.96	970.89
6	GUIDE	822102416	7.48	17154	-0.168	-0.159	0.056	0.090	272.173216	-20.087156	-1116.20	52.82
7	GUIDE	822102232	8.80	17144	-0.042	0.078	0.066	0.107	272.350923	-20.034935	-1322.14	648.05

2.4 Star Slots

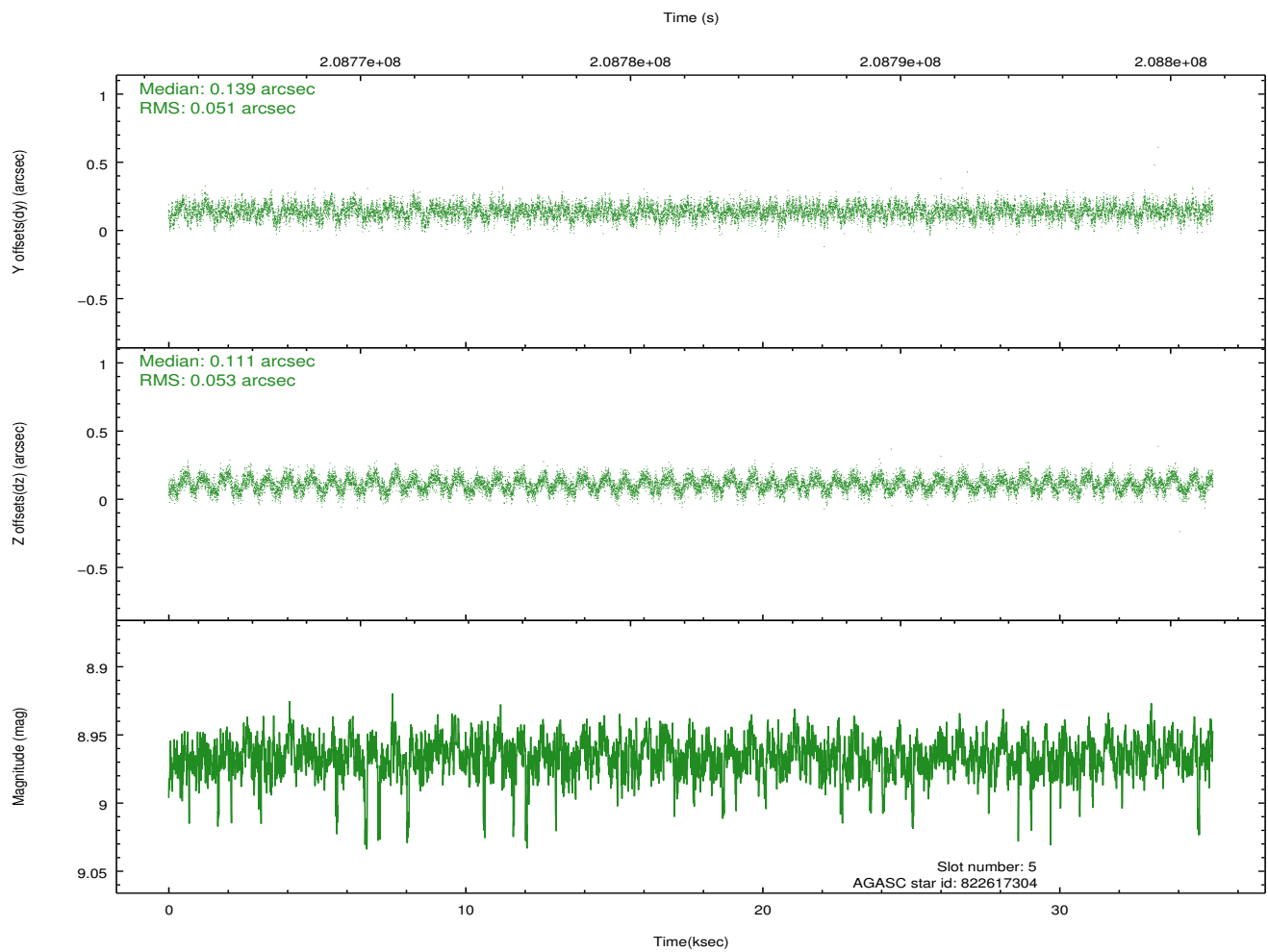
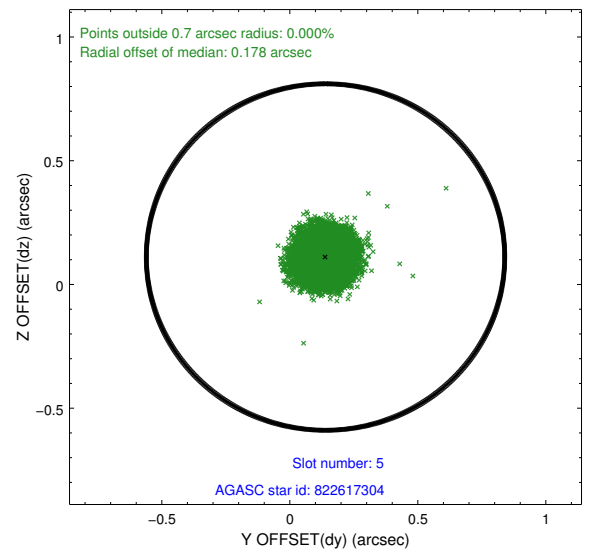
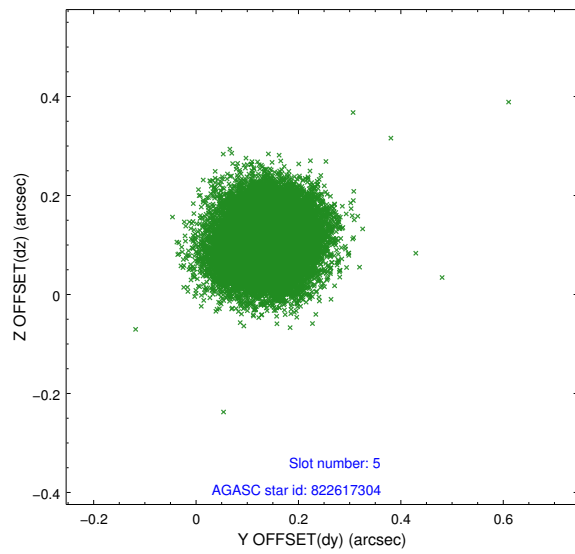
2.4.1 Slot 3



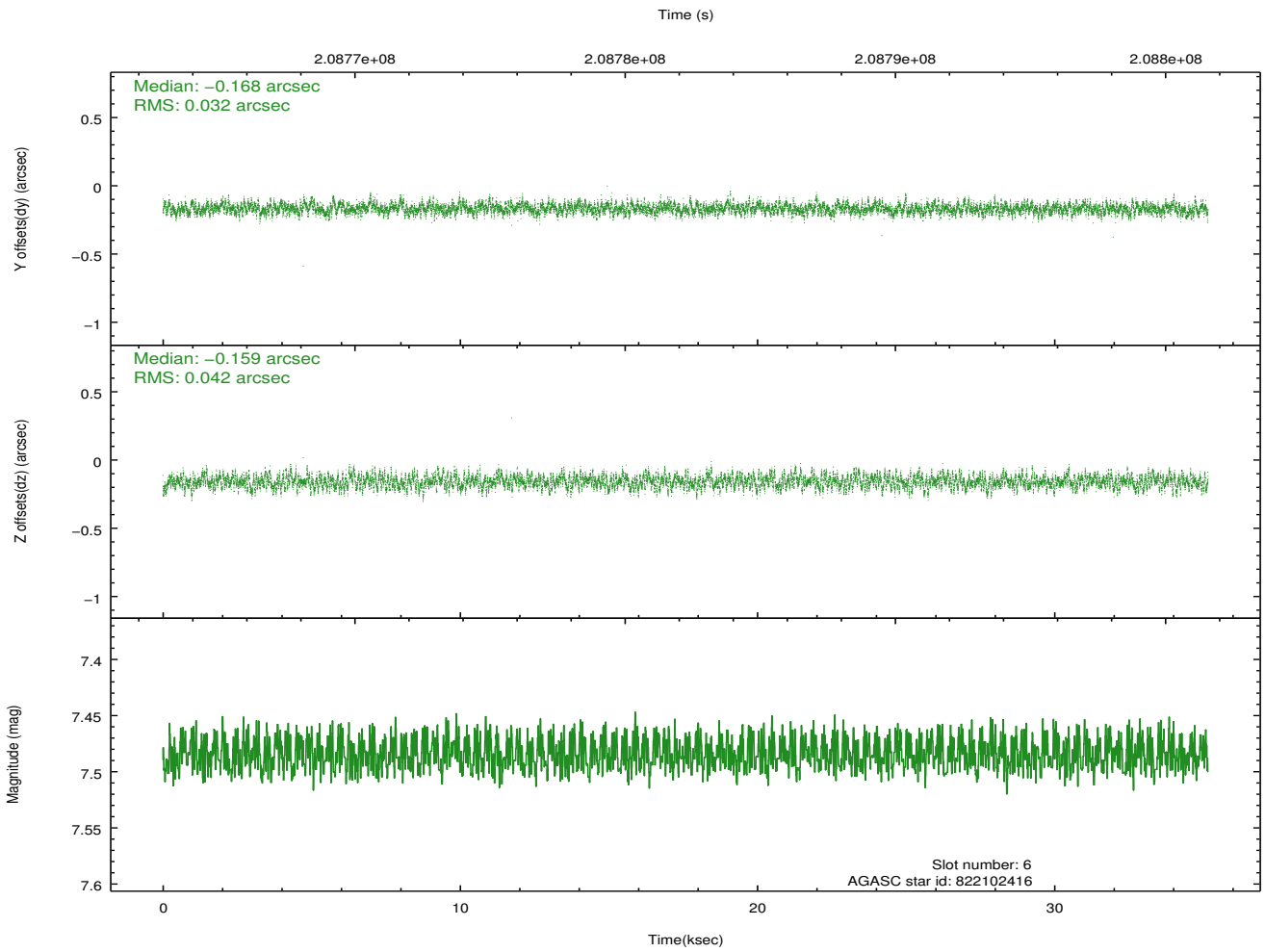
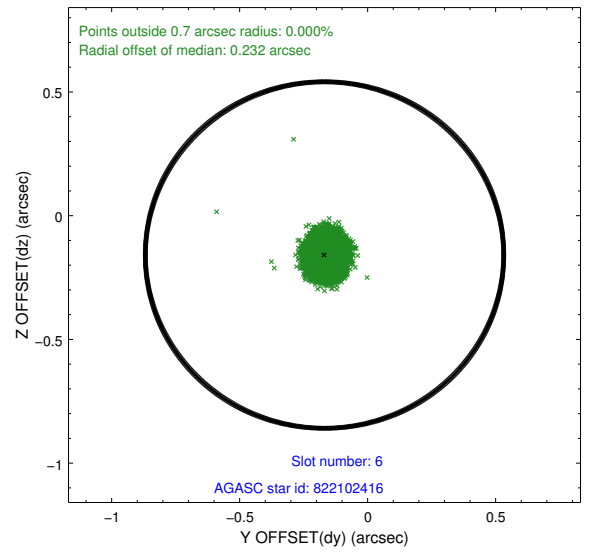
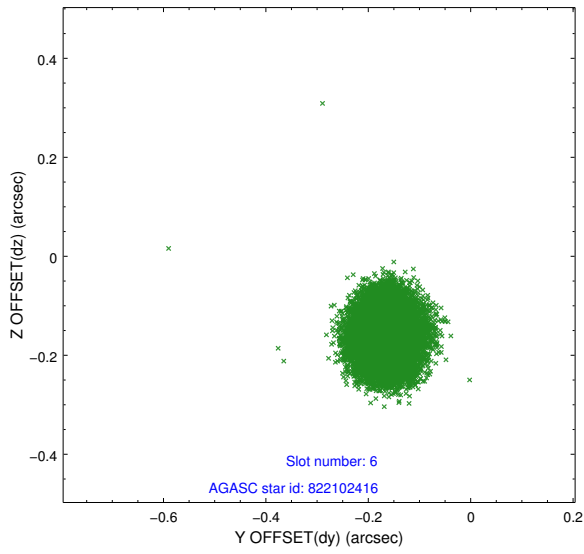
2.4.2 Slot 4



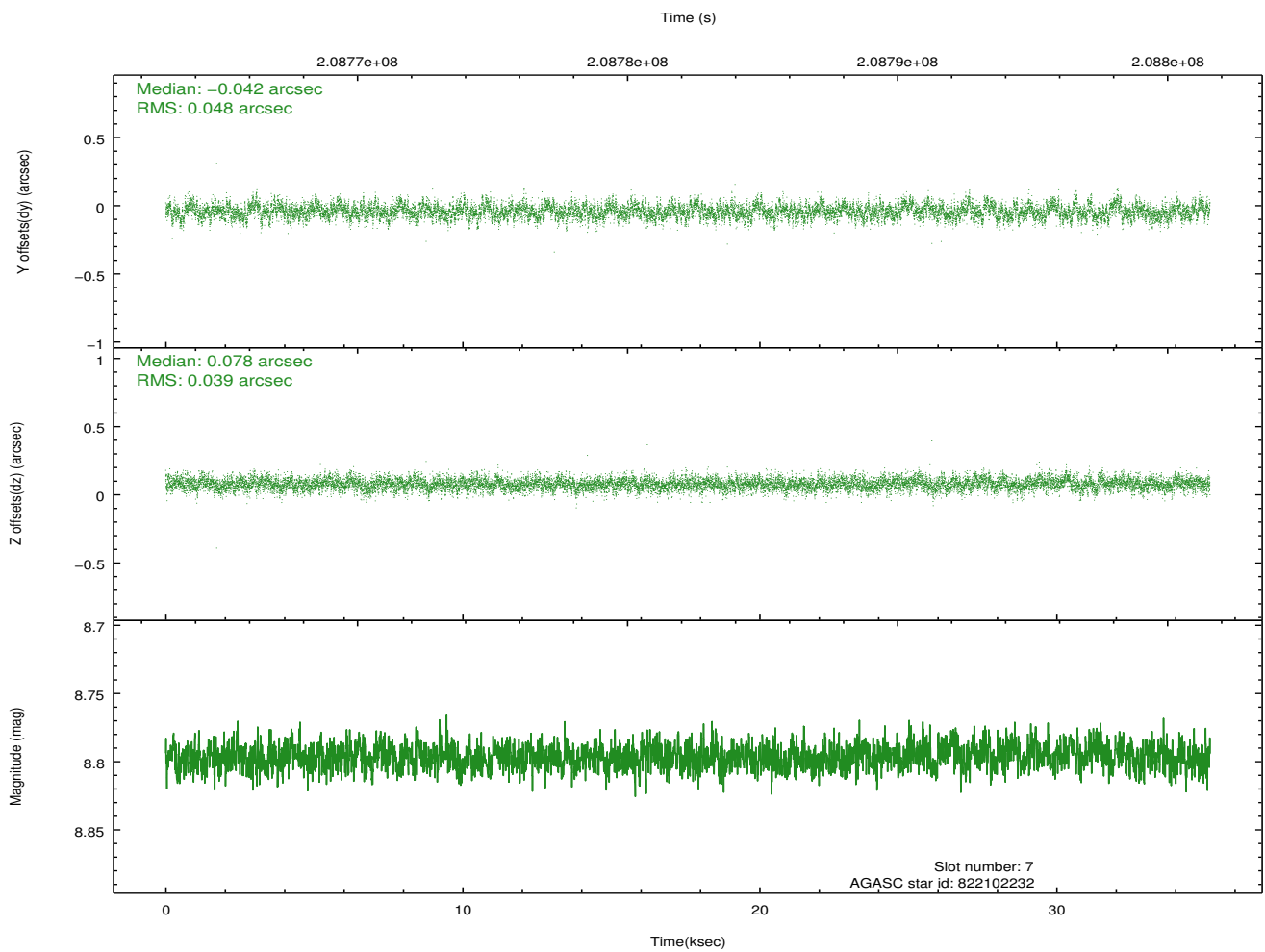
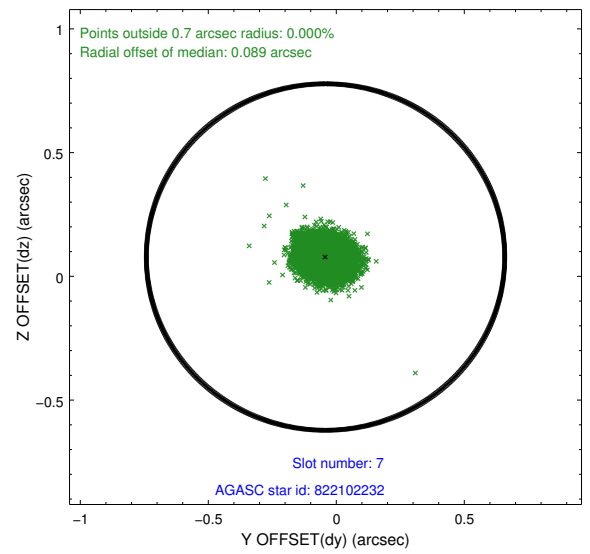
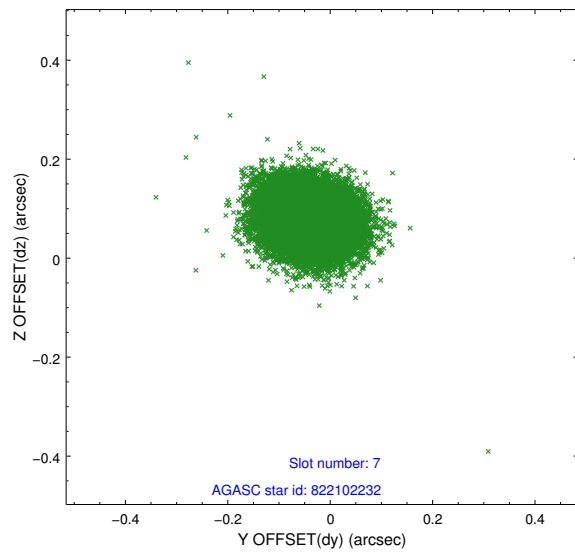
2.4.3 Slot 5



2.4.4 Slot 6

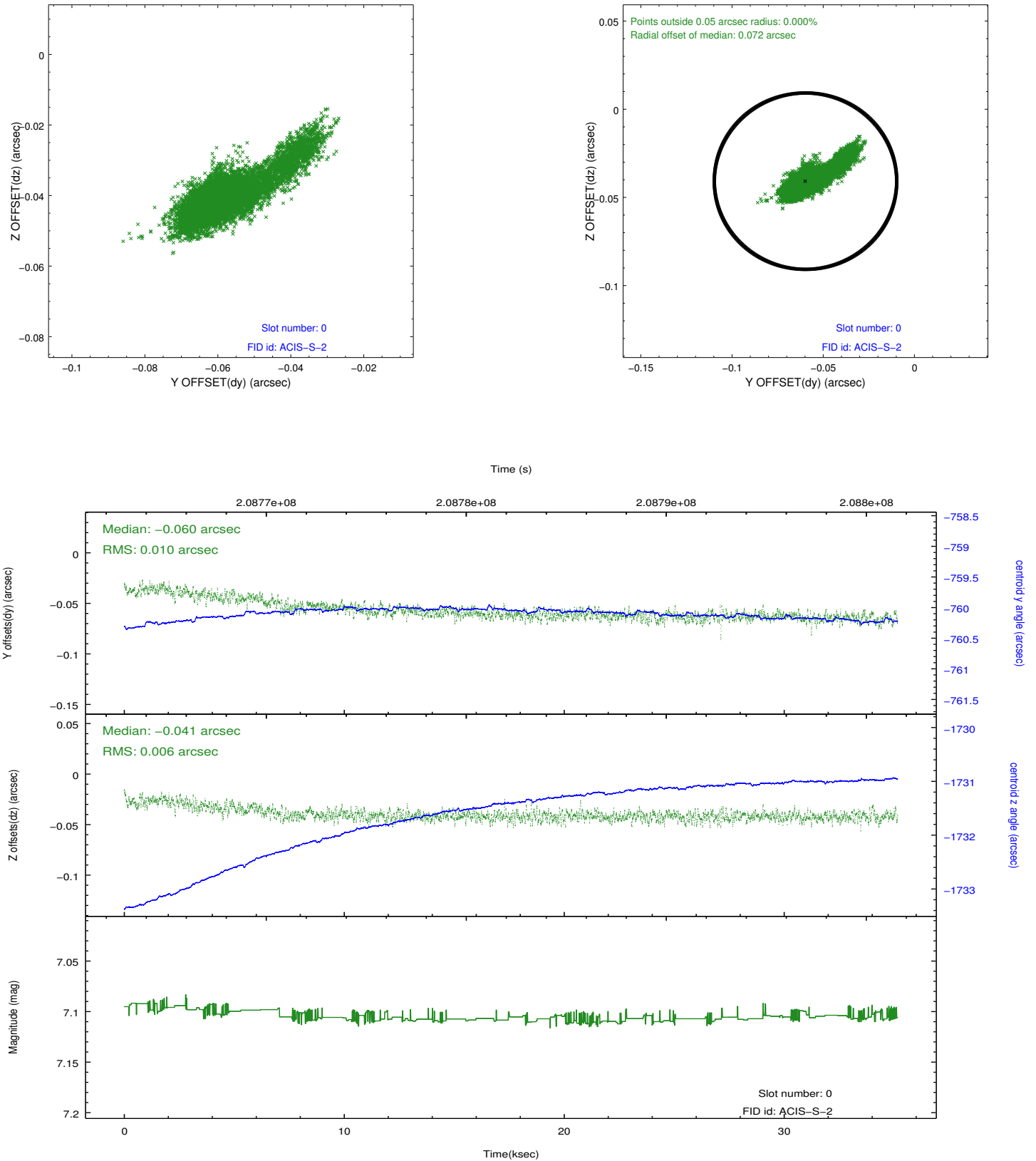


2.4.5 Slot 7

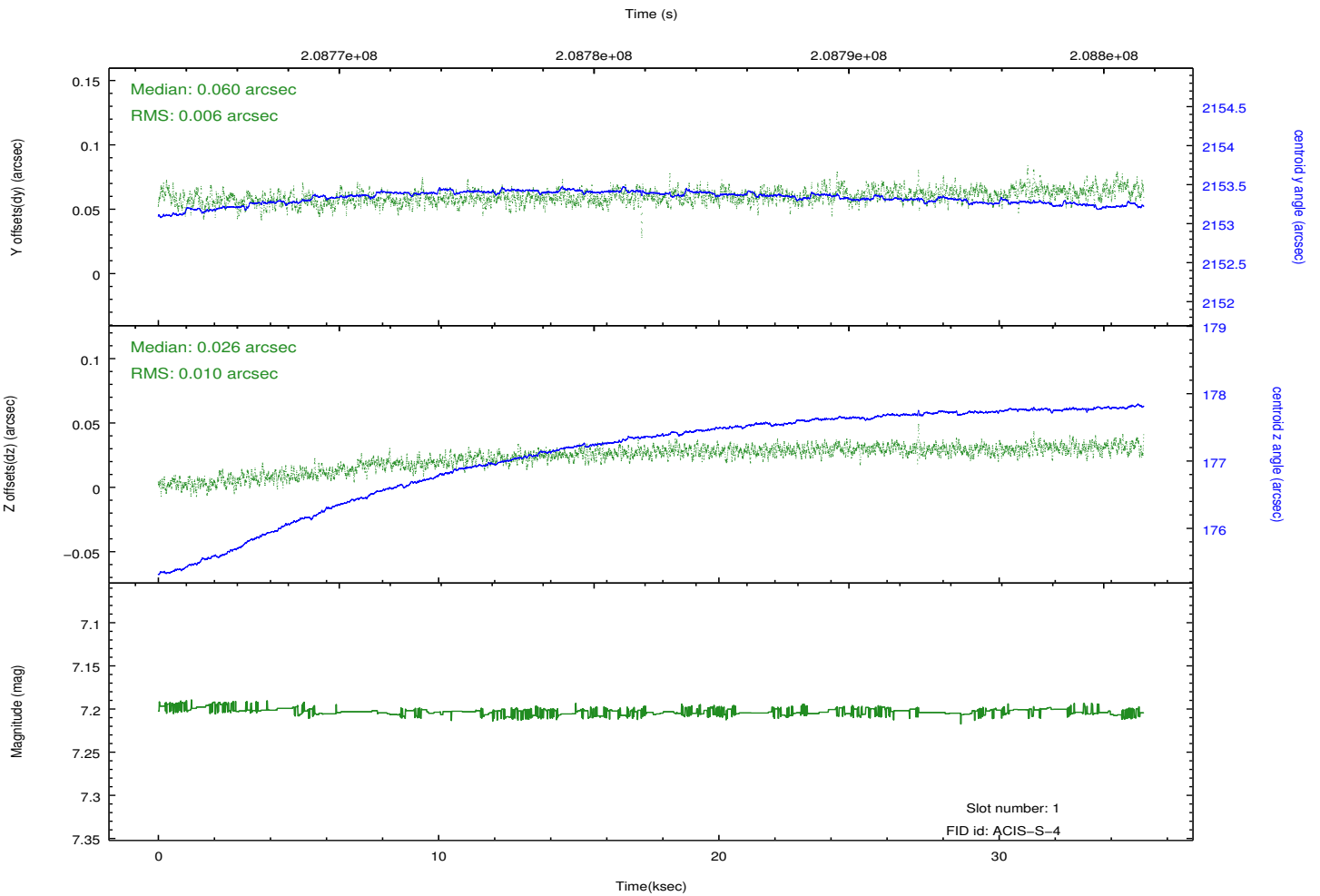
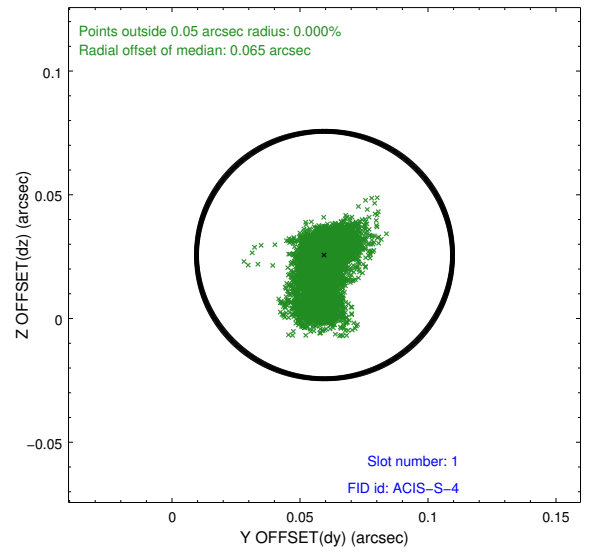
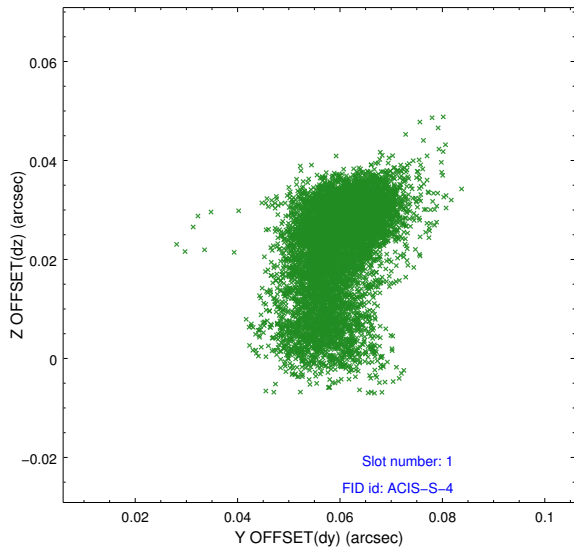


2.5 FID Slots

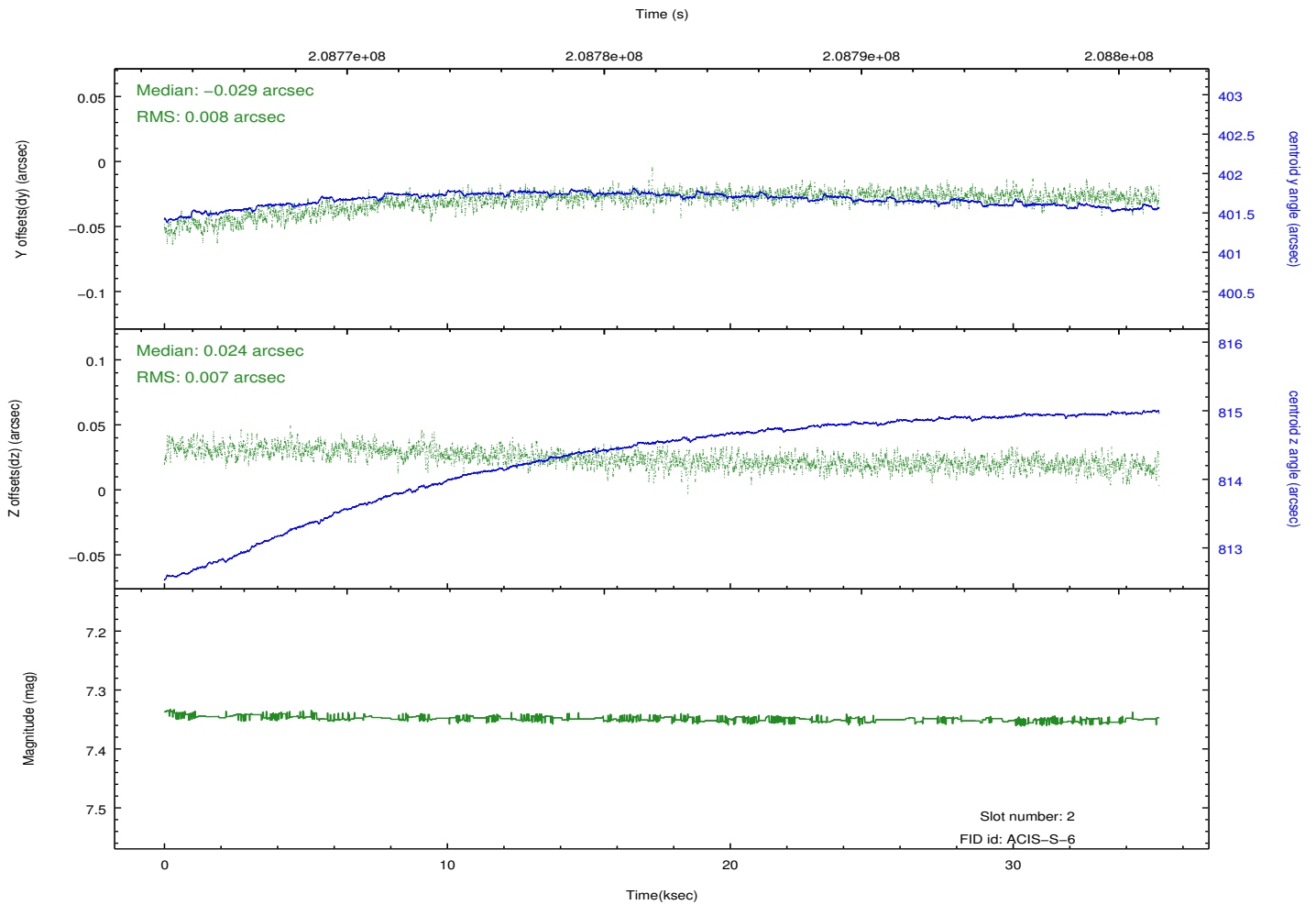
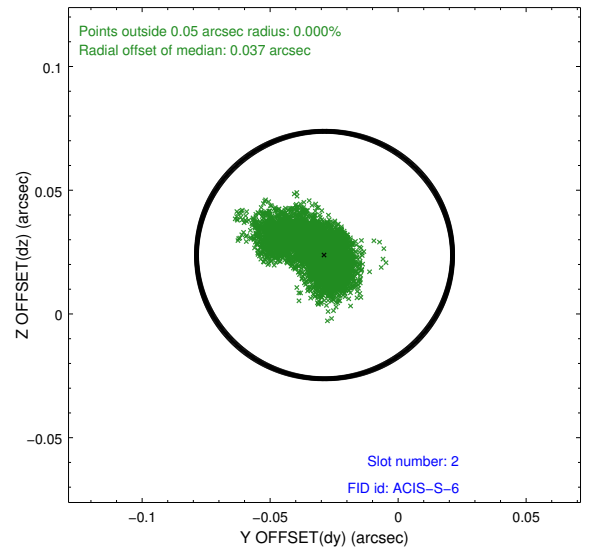
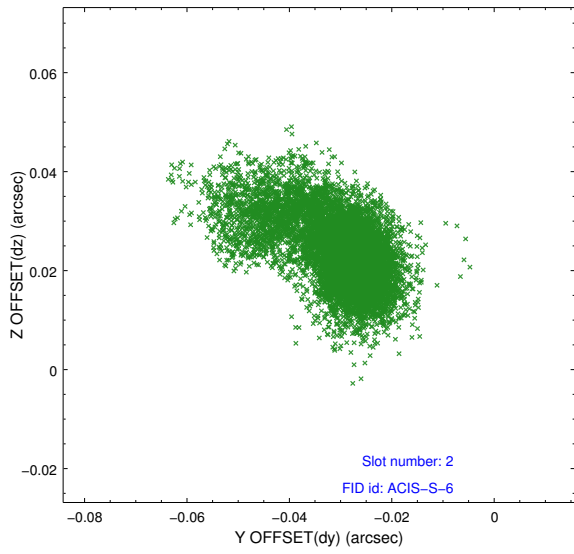
2.5.1 Slot 0



2.5.2 Slot 1



2.5.3 Slot 2



A Summary

A.1 Status

V&V Scientist	Joy Nichols
V&V Date (YYYY-MM-DD)	2012.12.28
V&V Edition	1
V&V Disposition and Status	OK
V&V Charge Time	35.161

A.2 Comments