

V&V Reference Report

L2 ASCDS Version : 8.4.5

Observation 4683 - L2 Version 3
Chandra X-Ray Center

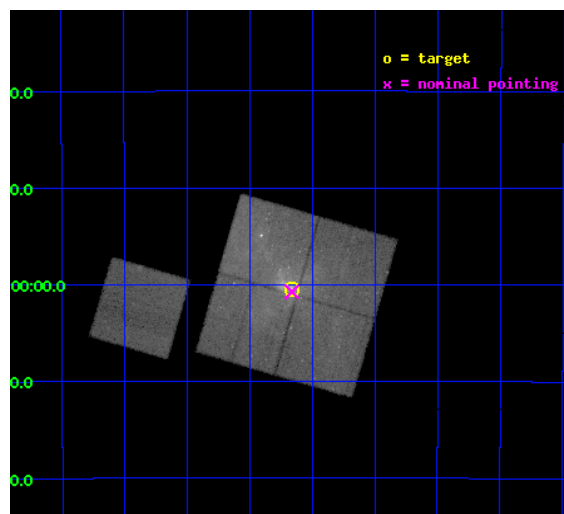
L2 Processing Date : Dec 3 2012

Contents

1	Front	2
2	OBI	3
2.1	OBI	3
2.1.1	Images	3
2.1.2	Bias	3
2.1.3	Parameters	4
2.1.4	Events	4
2.2	Compared Parameters	5
2.3	Aspect	6
2.4	Star Slots	9
2.4.1	Slot 3	9
2.4.2	Slot 4	10
2.4.3	Slot 5	11
2.4.4	Slot 6	12
2.4.5	Slot 7	13
2.5	FID Slots	14
2.5.1	Slot 0	14
2.5.2	Slot 1	15
2.5.3	Slot 2	16
A	Summary	17
A.1	Status	17
A.2	Comments	17

1 Front

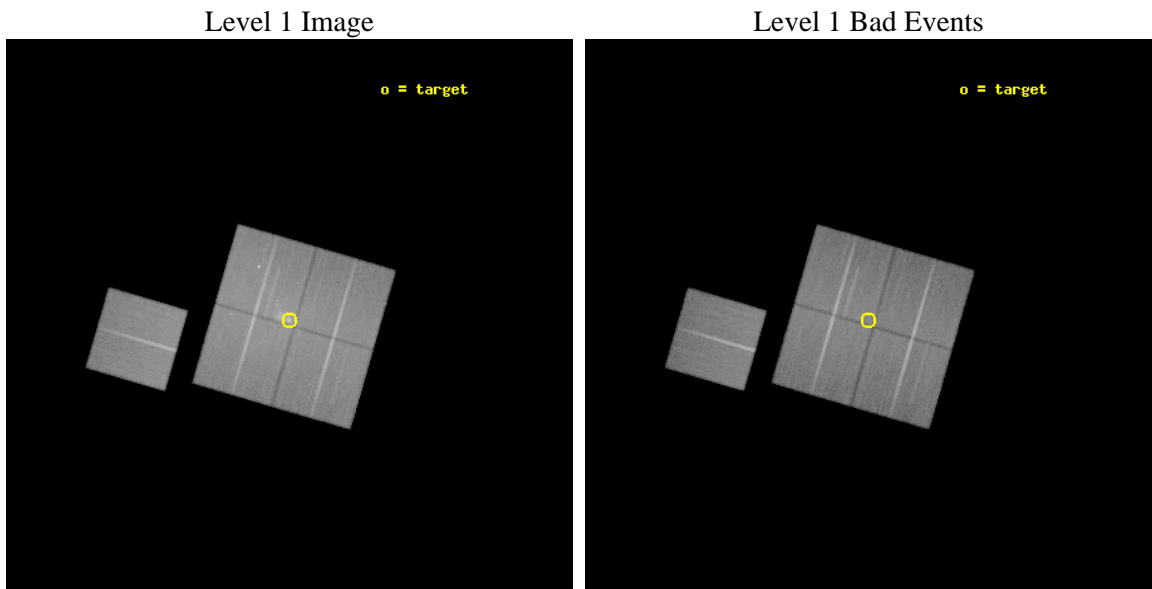
seq_num	600338	Sequence number
obs_id	4683	Observation id
title	Simultaneous X-ray, Sub-millimeter, and Mid-Infrared Monitoring of Sagittarius A*	Proposal title
observer	Professor Gordon Garmire	Principal investigator
object	Sgr A*	Source name
dtcycle	0	
cycle	P	events from which exps? Prim/Second/Both
ra_targ	266.416667	Observer's specified target RA [deg]
dec_targ	-29.007778	Observer's specified target Dec [deg]
ra_nom	266.41605669588	Nominal RA [deg]
dec_nom	-29.012403713516	Nominal Dec [deg]
roll_nom	286.23393744886	Nominal Roll [deg]
revision	3	Processing version of data
ontime	50179.699903488	Sum of GTIs [s]
lifetime	49524.065182491	Lifetime [s]
ontime0	50176.558923244	Sum of GTIs [s]
ontime1	50176.558913261	Sum of GTIs [s]
ontime2	50179.699903488	Sum of GTIs [s]
ontime3	50179.699903488	Sum of GTIs [s]
ontime6	50179.699903488	Sum of GTIs [s]
l2events	407519	Number of level 2 events



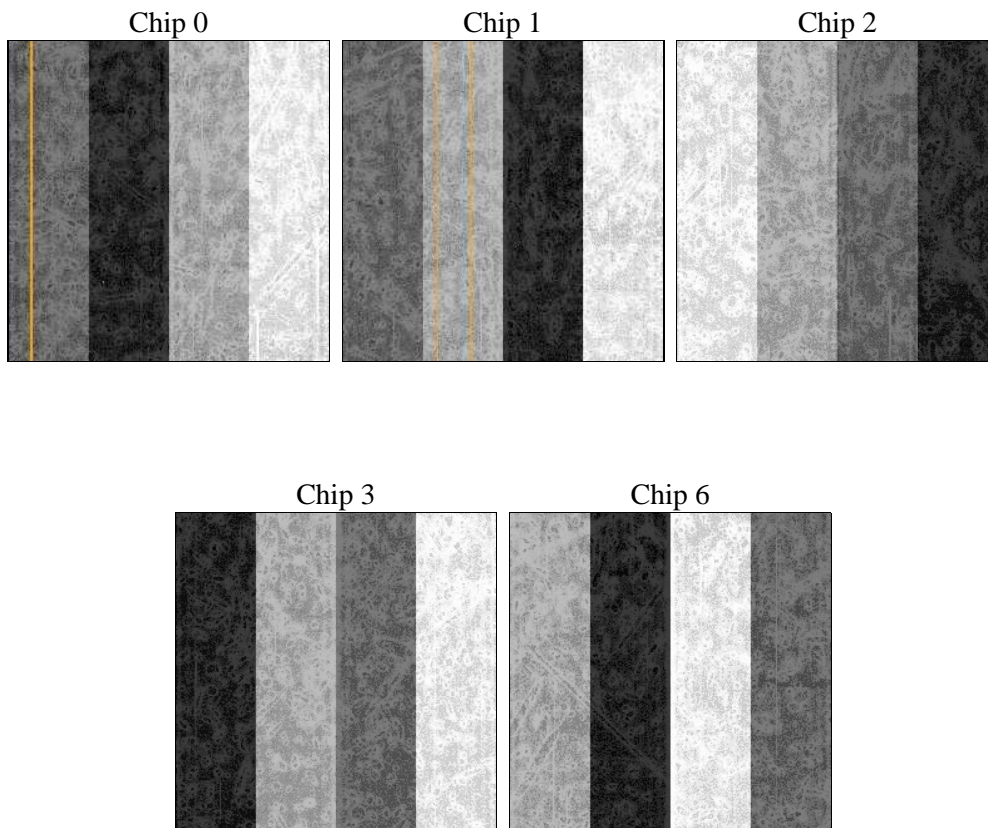
2 OBI

2.1 OBI

2.1.1 Images



2.1.2 Bias



2.1.3 Parameters

obi_num	0	Obi number	sched_exp_time	50000.000000	[s] Scheduled observation exposure time
ascdsver	8.4.5	Processing system revision	ontime	50179.699903488	Sum of GTIs [s]
caldbver	4.5.2	 	ontime0	50176.558923244	Sum of GTIs [s]
date	2012-12-03T20:52:16	Date and time of file creation	ontime1	50176.558913261	Sum of GTIs [s]
revision	3	Processing version of data	ontime2	50179.699903488	Sum of GTIs [s]
			ontime3	50179.699903488	Sum of GTIs [s]
			ontime6	50179.699903488	Sum of GTIs [s]
			l1events	2074011	Number of level 1 events

2.1.4 Events

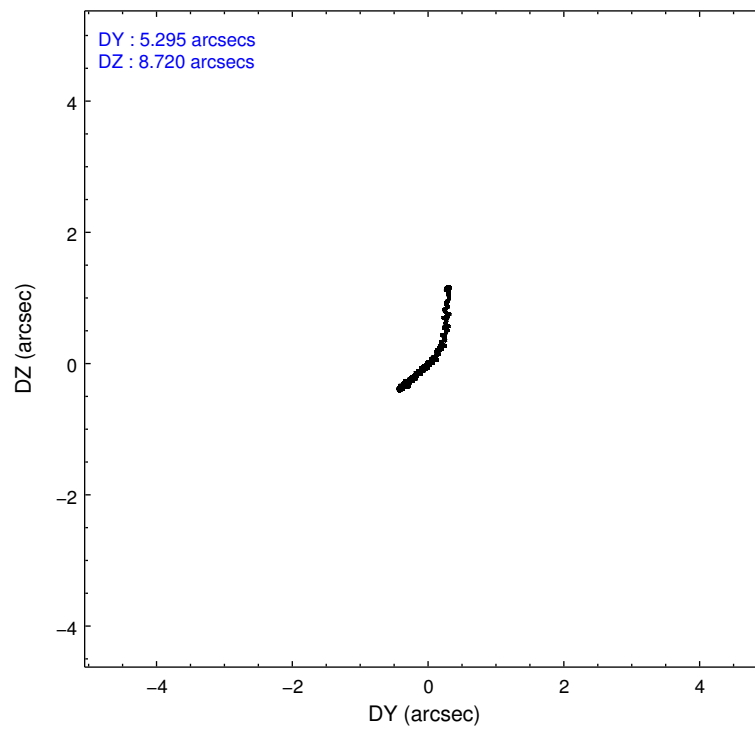
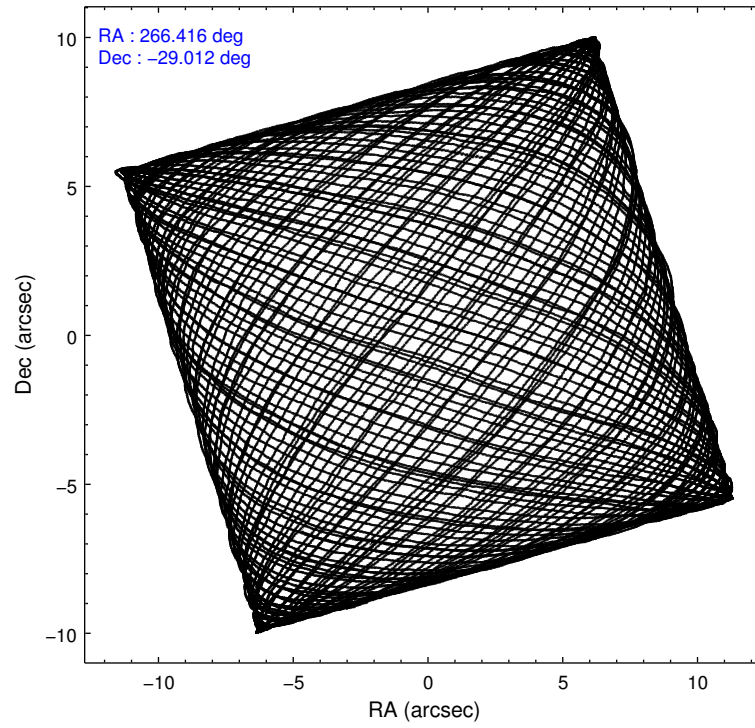
	ccd 0	ccd 1	ccd 2	ccd 3	ccd 6
level 1 events	386726	385295	430245	482086	389659
rejected events	308468	304979	339333	337177	334902
rejected %	79%	79%	78%	69%	85%

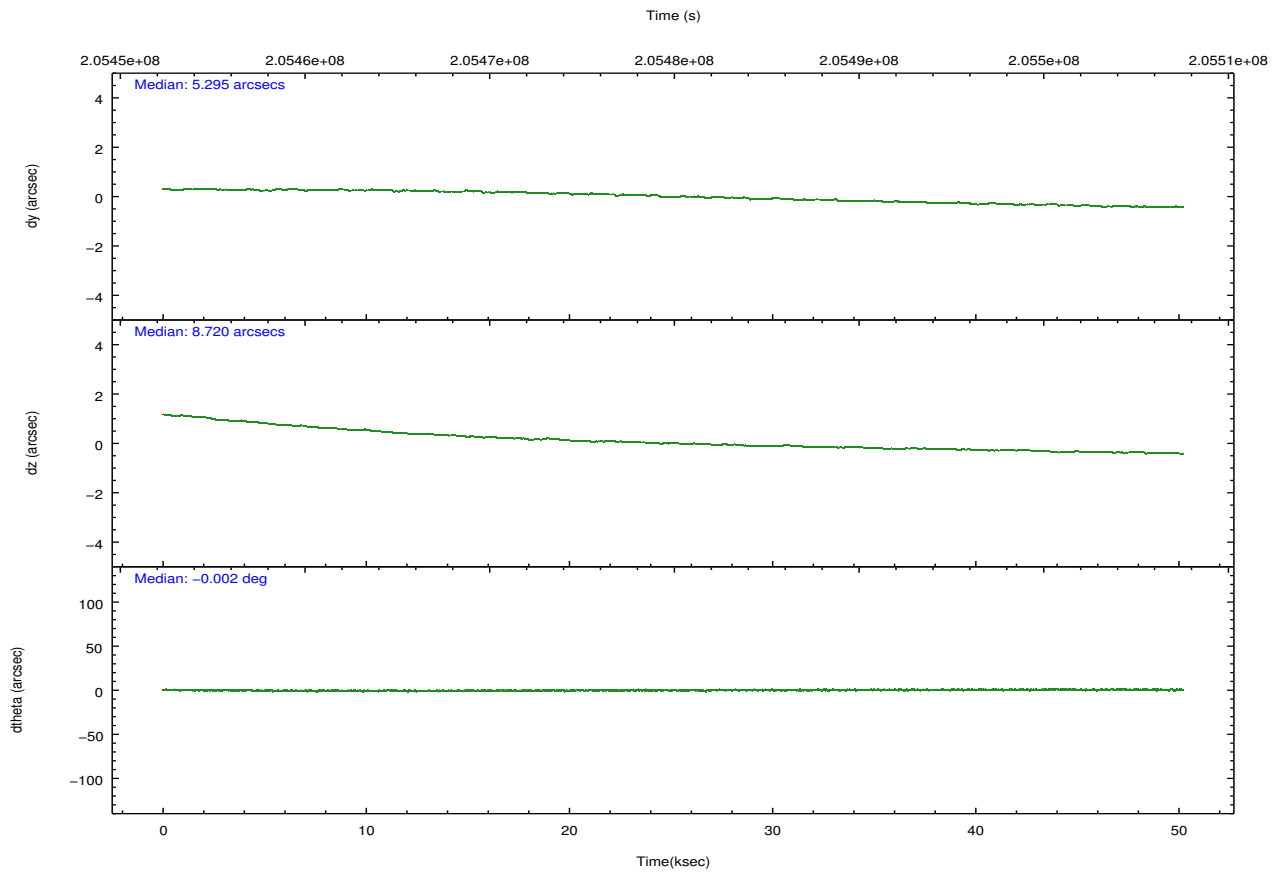
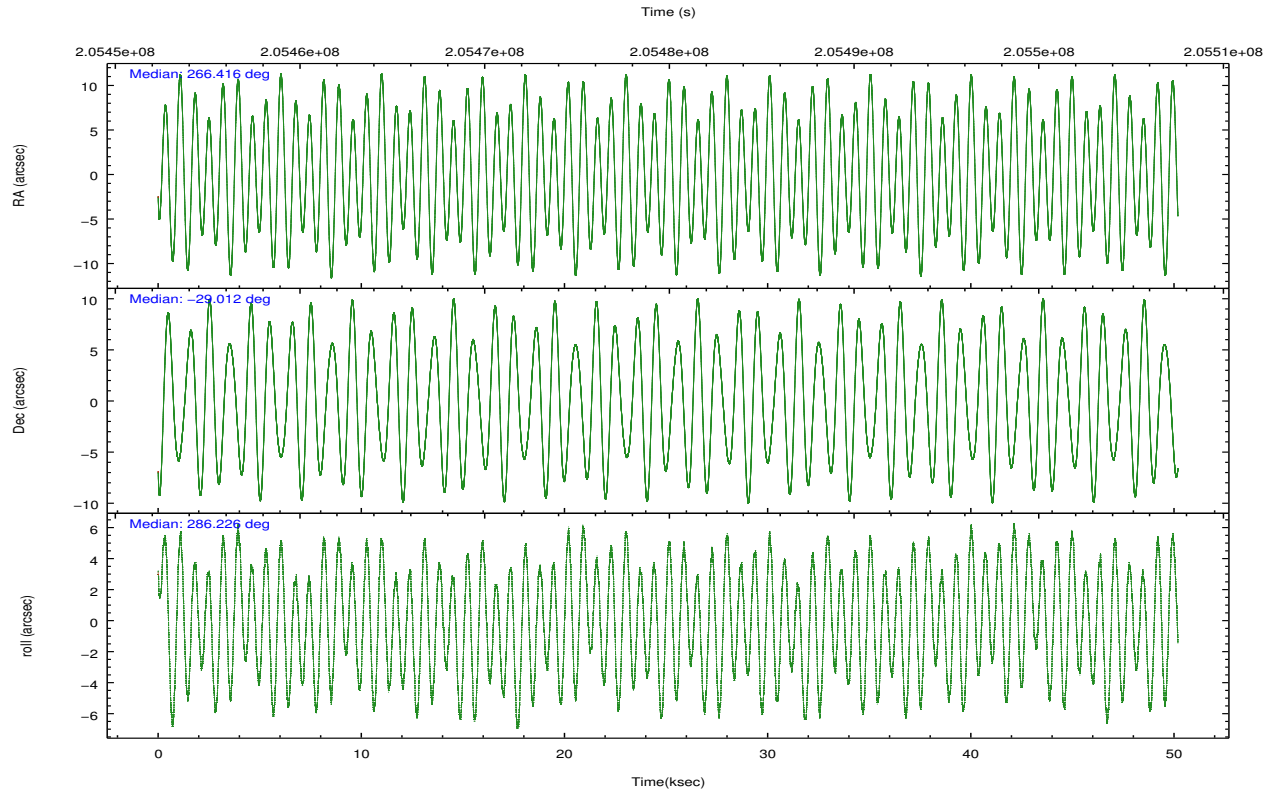
	ccd 0	ccd 1	ccd 2	ccd 3	ccd 6
grade 0 events	41831	41487	52836	89091	24996
	10%	10%	12%	18%	6%
grade 1 events	331	301	450	754	212
	0%	0%	0%	0%	0%
grade 2 events	14095	14789	15020	22362	10519
	3%	3%	3%	4%	2%
grade 3 events	6227	6255	6427	9320	4922
	1%	1%	1%	1%	1%
grade 4 events	5728	6269	6415	9161	4780
	1%	1%	1%	1%	1%
grade 5 events	15521	15926	14978	17567	17080
	4%	4%	3%	3%	4%
grade 6 events	10518	11643	10364	15187	9633
	2%	3%	2%	3%	2%
grade 7 events	292475	288625	323755	318644	317517
	75%	74%	75%	66%	81%

2.2 Compared Parameters

Parameter	Planned	Actual	Parameter	Planned	Actual
Instrument	ACIS	ACIS	Obspar format version number	7	7
Detector	ACIS-01236	ACIS-01236	Obspar file type	PREDICTED	ACTUAL
Grating	NONE	NONE	Obspar update status	NONE	UPDATED
Data mode	FAINT	FAINT	Number of optional ACIS chips dropped	0	0
Observation mode	POINTING	POINTING	On-chip summing requested	N	N
[deg] Pointing RA	266.393343	266.4160566958841	Subarray requested	NONE	NONE
[deg] Pointing Dec	-28.993516	-29.01240371351609	Alternating exposures requested	N	N
[deg] Pointing Roll	286.014238	286.233937448862	[s] Primary exposure time	0.000000	3.1
[s] Window start time (MET)	205455004.184000	205455004.184000			
[s] Window stop time (MET)	205504984.184000	205504984.184000			
[mm] SIM focus pos	-0.782348	-0.7809083437167272			
[mm] SIM defocus	0	0.001439871863259334			
[mm] SIM translation stage pos	-233.592463	-233.5874344608287			
[mm] SIM translation stage offset	0	-0.005018542100998502			
[s] Observation start time (MET)	205455024.184000	205453991.63286			
Observation start date	2004-07-05T22:49:20	2004-07-05T22:33:11			
[s] Observation end time (MET)	205505024.184000	205505809.48516			
Observation end date	2004-07-06T12:42:40	2004-07-06T12:56:49			
Read mode	TIMED	TIMED			

2.3 Aspect



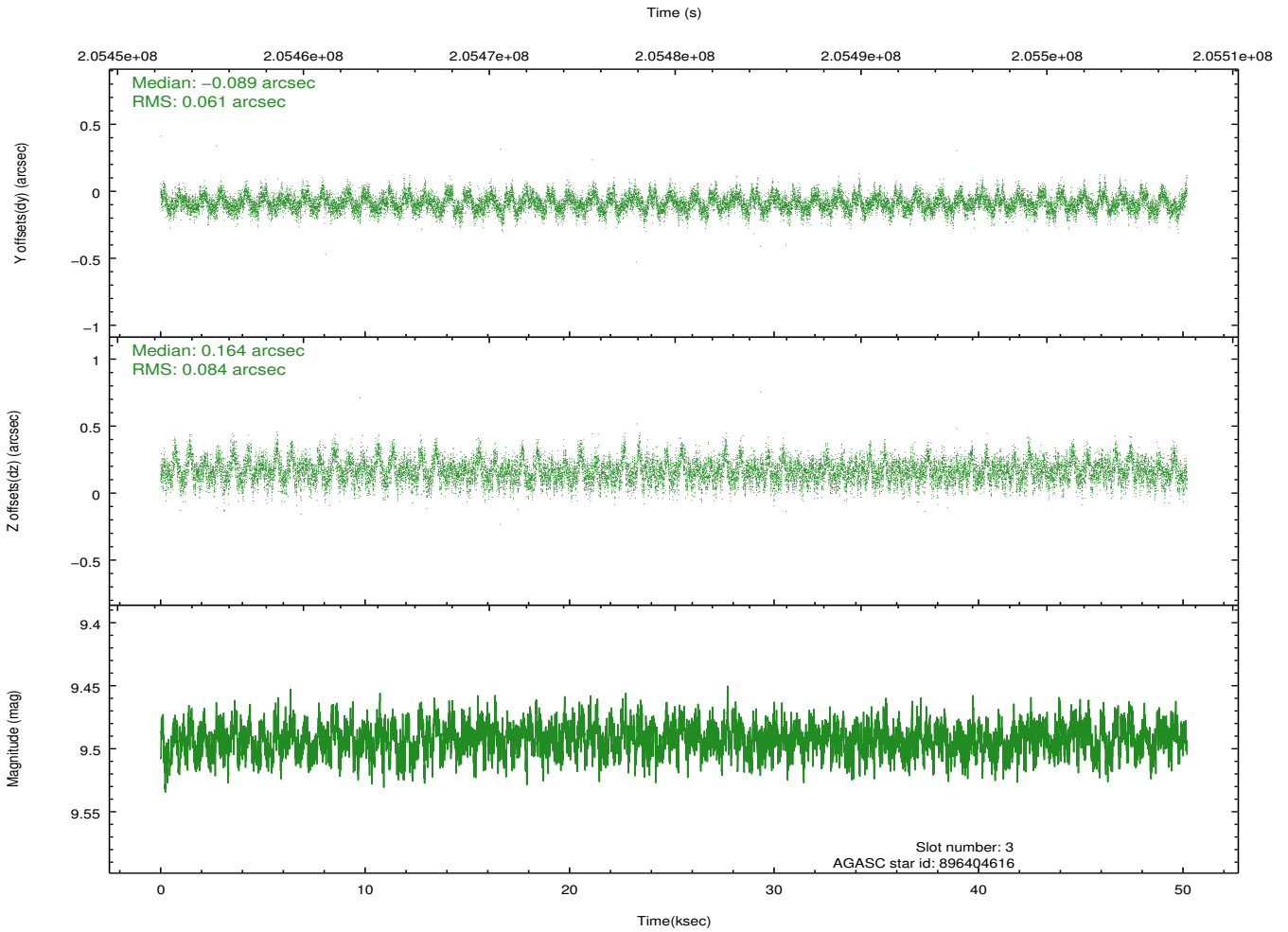
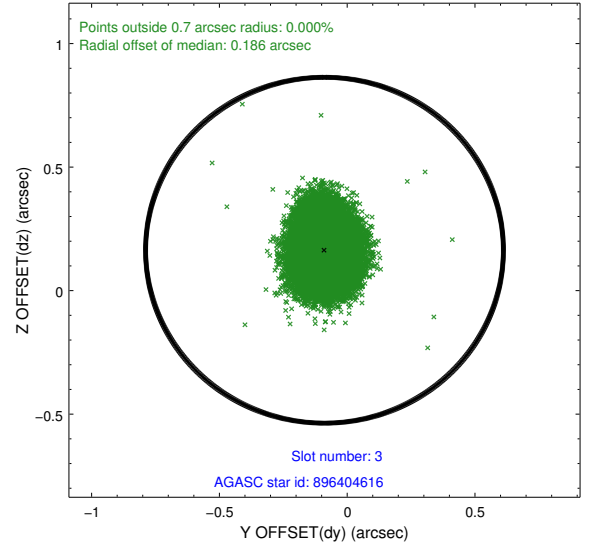
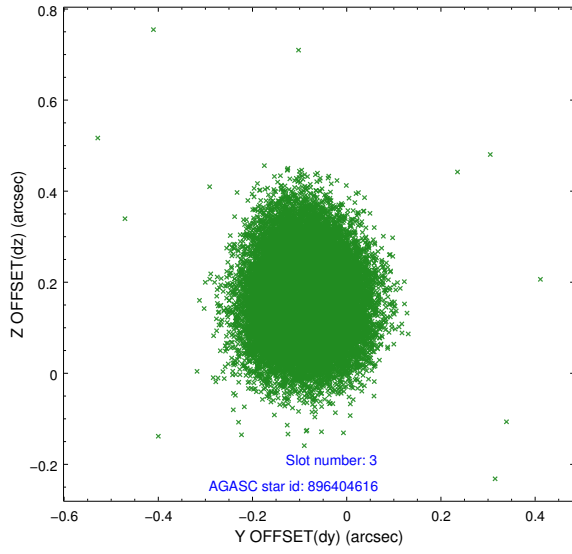


Slot Statistics

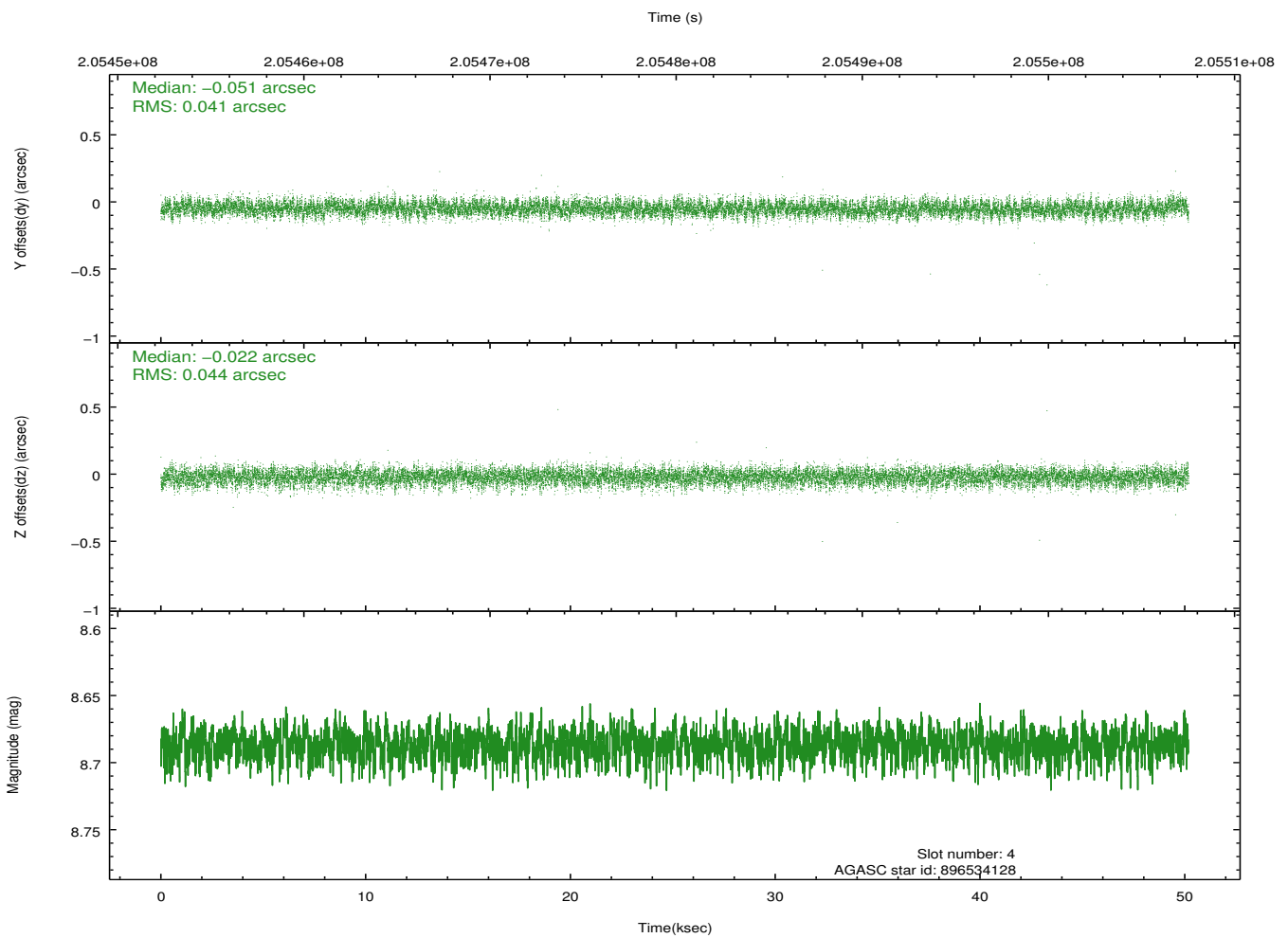
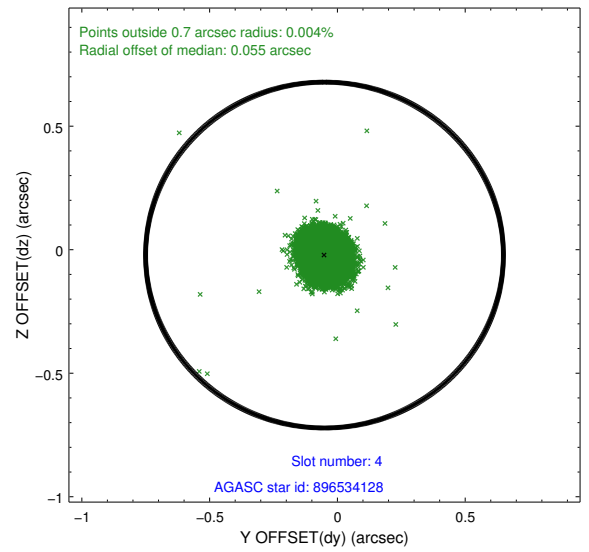
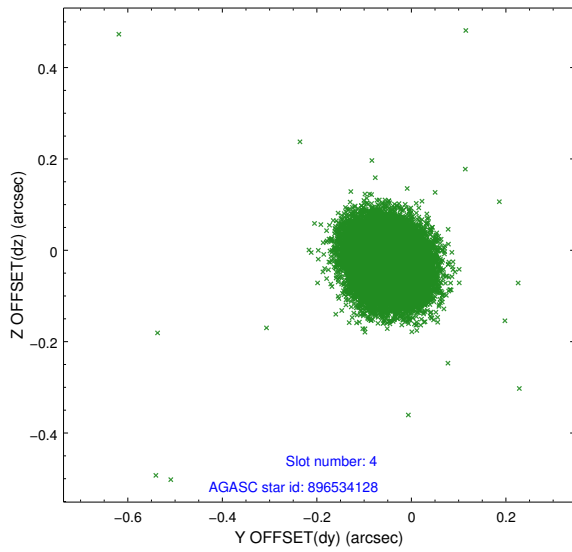
slot	status	id	mag	n_pts	med_dy	med_dz	dr1	dr2	ra	dec	mean_y	mean_z
0	FID	ACIS-I-1	7.24	12241	0.005	0.041	0.012	0.021	0.000000	0.000000	934.46	-832.24
1	FID	ACIS-I-5	7.22	12242	-0.148	0.037	0.011	0.018	0.000000	0.000000	-1813.83	1065.24
2	FID	ACIS-I-6	7.25	12242	0.050	-0.009	0.013	0.027	0.000000	0.000000	400.05	1709.69
3	GUIDE	896404616	9.49	24470	-0.089	0.164	0.111	0.179	265.524948	-28.708456	-1732.75	-2355.10
4	GUIDE	896534128	8.69	24474	-0.051	-0.022	0.064	0.102	266.503837	-29.080853	398.36	247.51
5	GUIDE	896534664	8.18	24479	0.138	-0.061	0.055	0.089	266.405570	-28.407461	-2016.94	619.15
6	GUIDE	896541576	8.19	24478	-0.098	-0.077	0.071	0.117	267.051055	-28.762912	-220.07	2222.65
7	GUIDE	896403520	9.00	24471	0.098	-0.011	0.088	0.136	265.626481	-28.748780	-1506.48	-2085.53

2.4 Star Slots

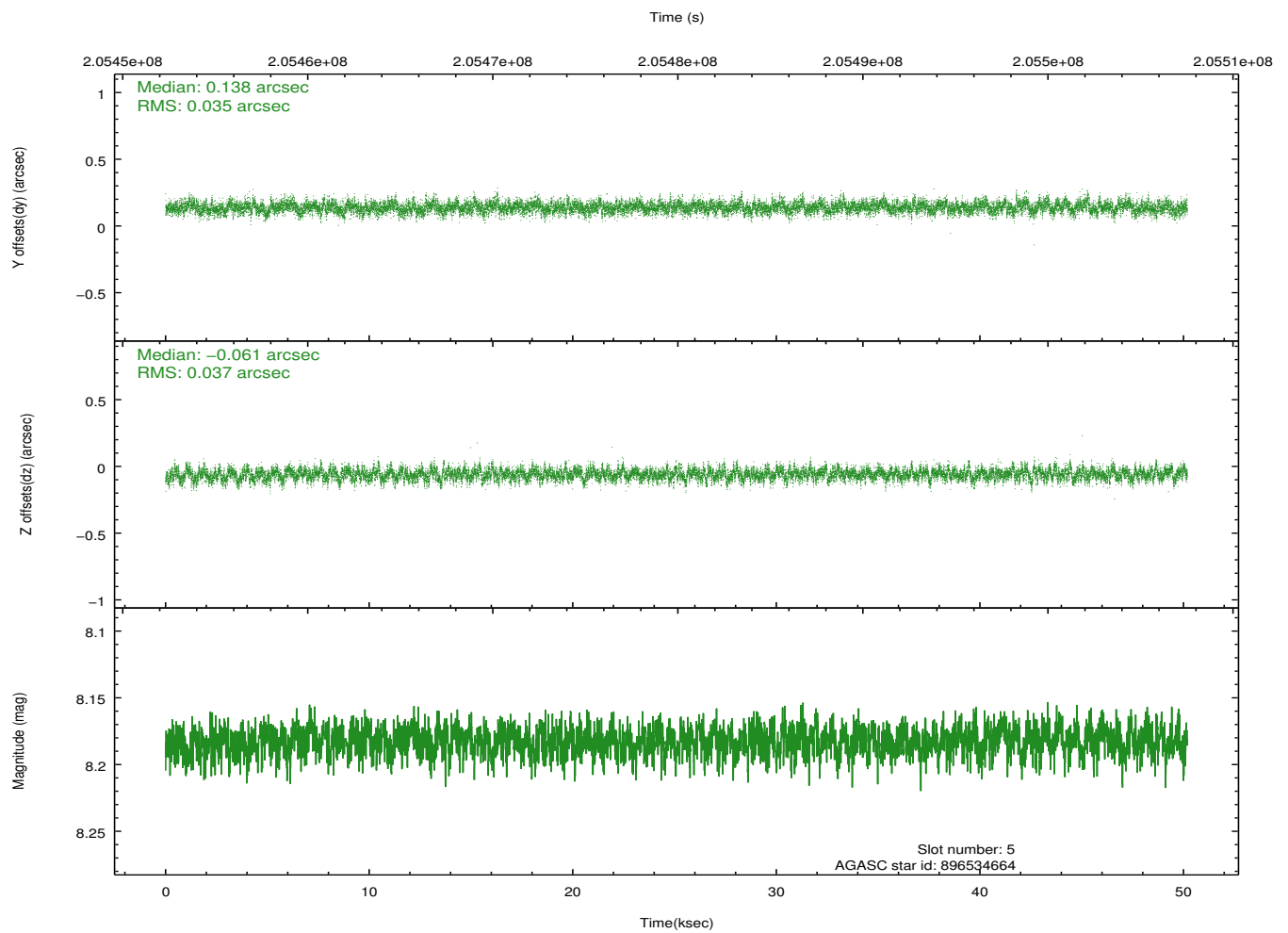
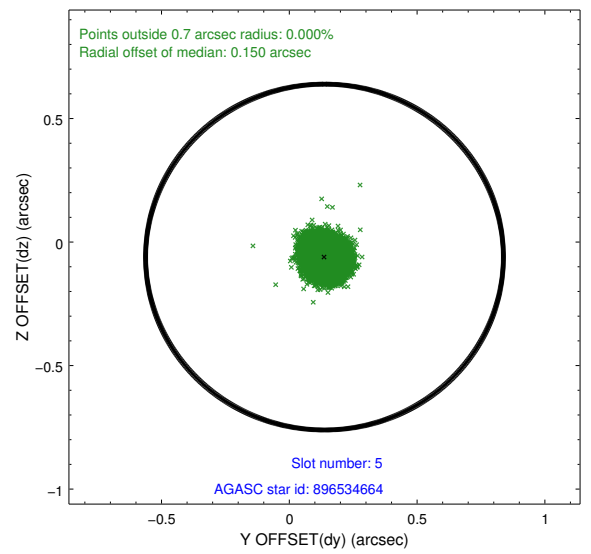
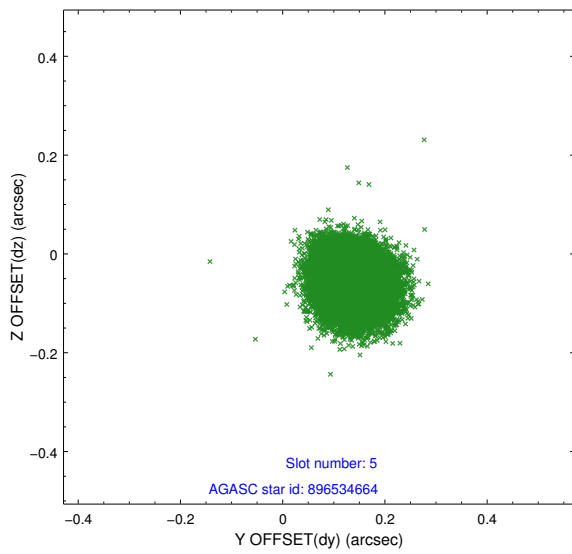
2.4.1 Slot 3



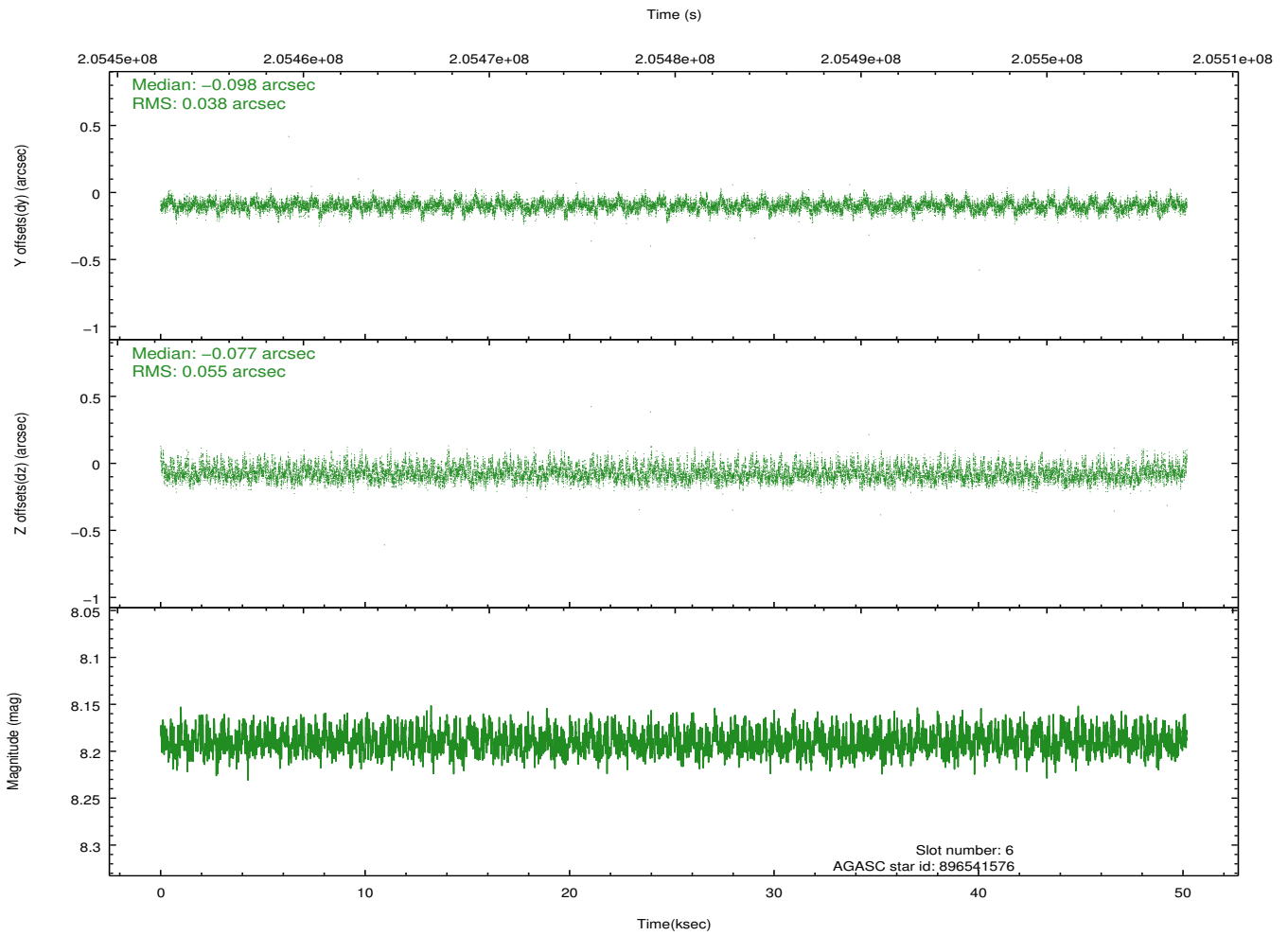
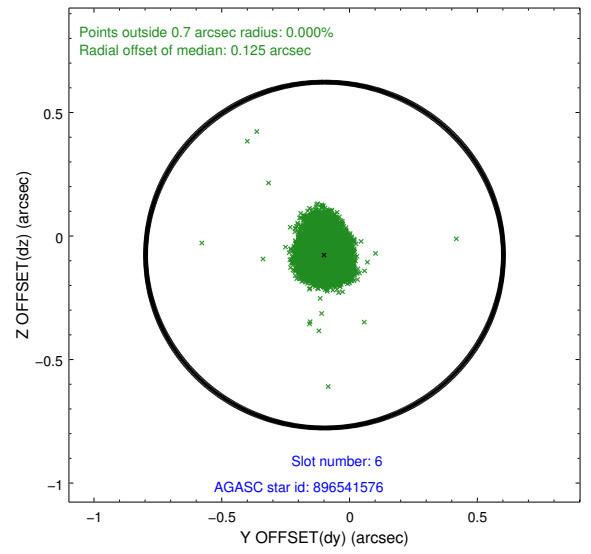
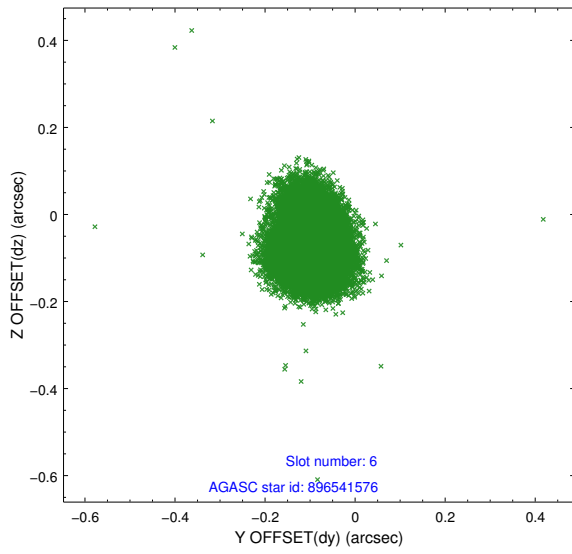
2.4.2 Slot 4



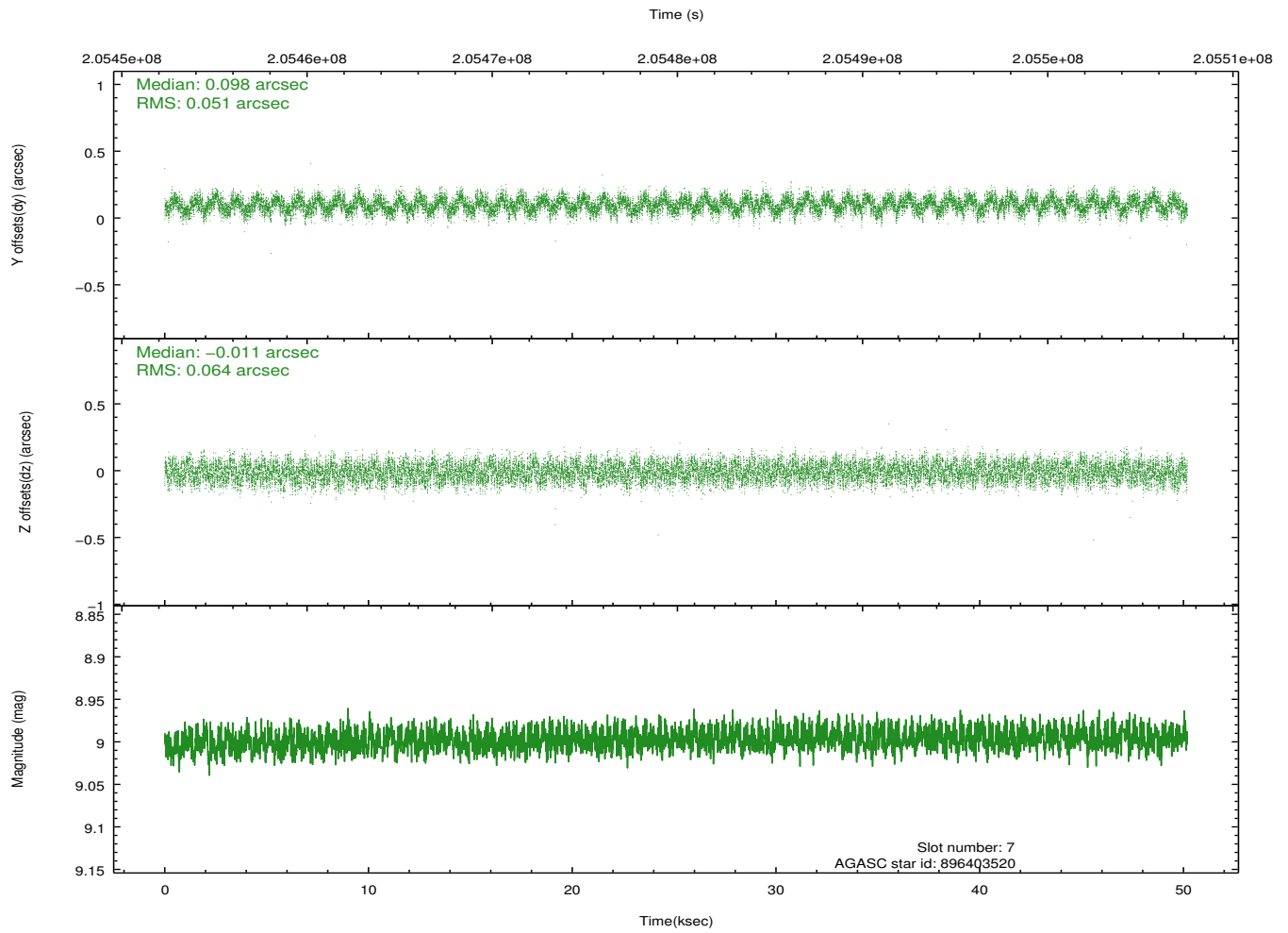
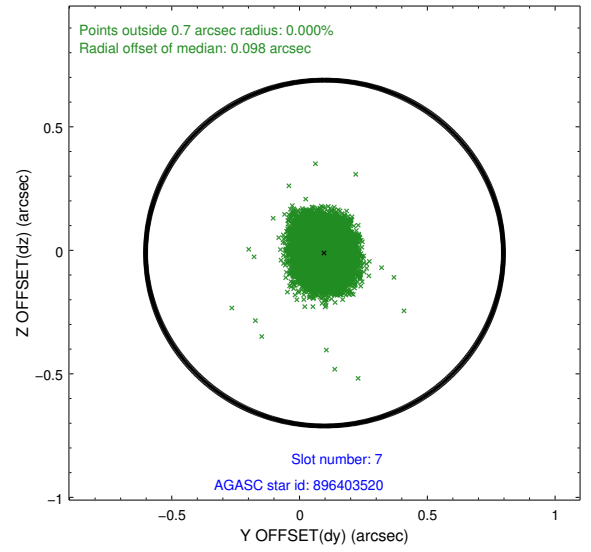
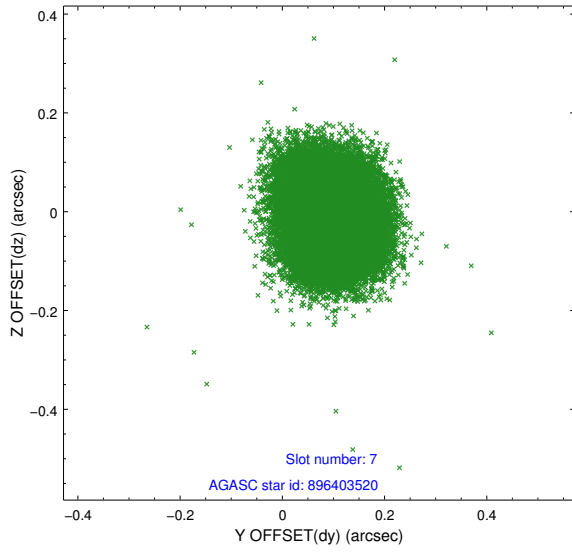
2.4.3 Slot 5



2.4.4 Slot 6

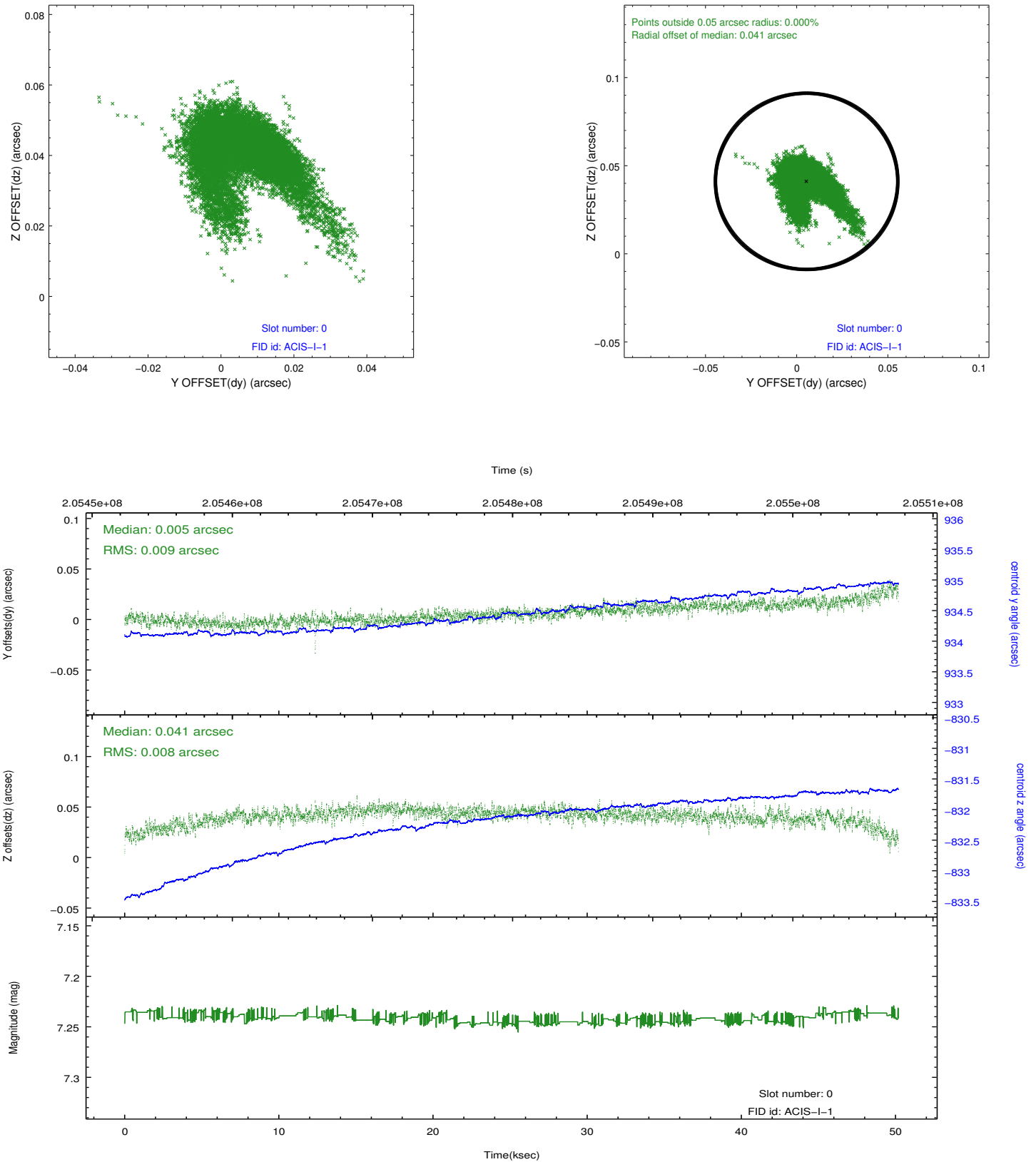


2.4.5 Slot 7

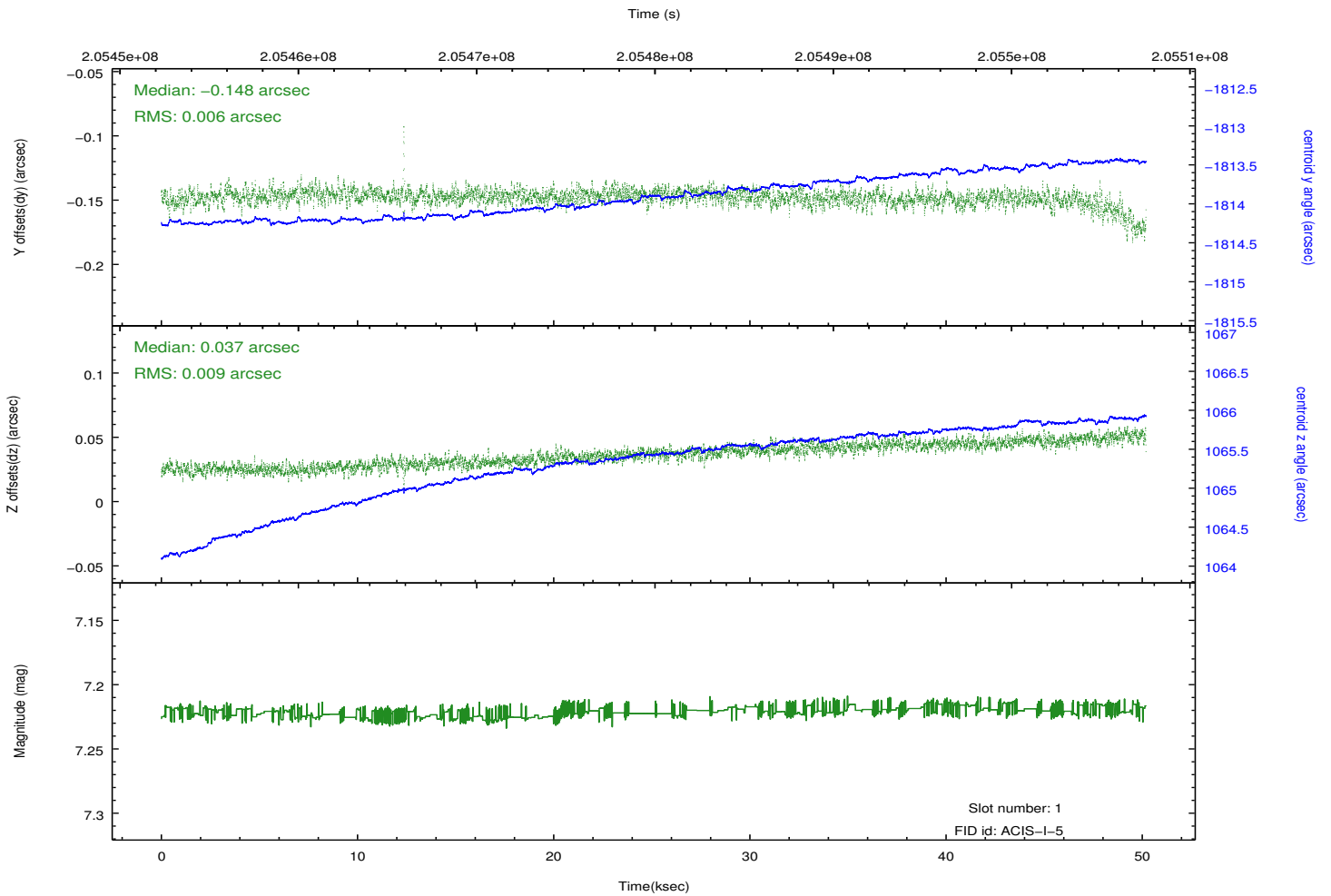
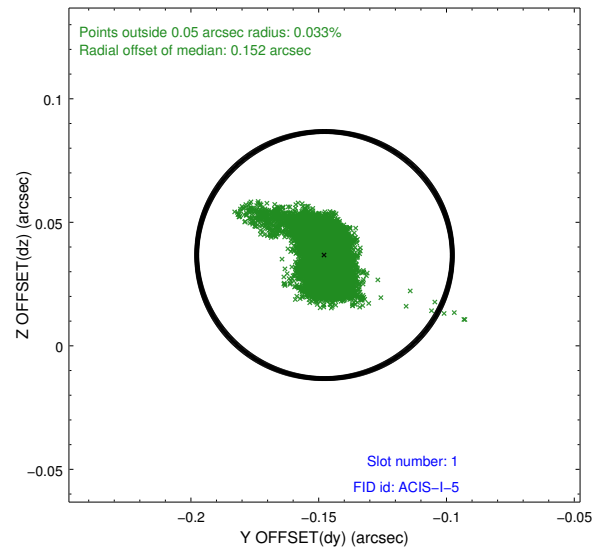
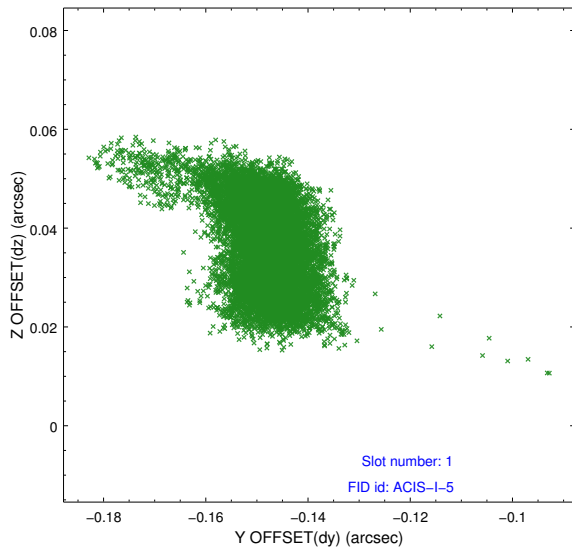


2.5 FID Slots

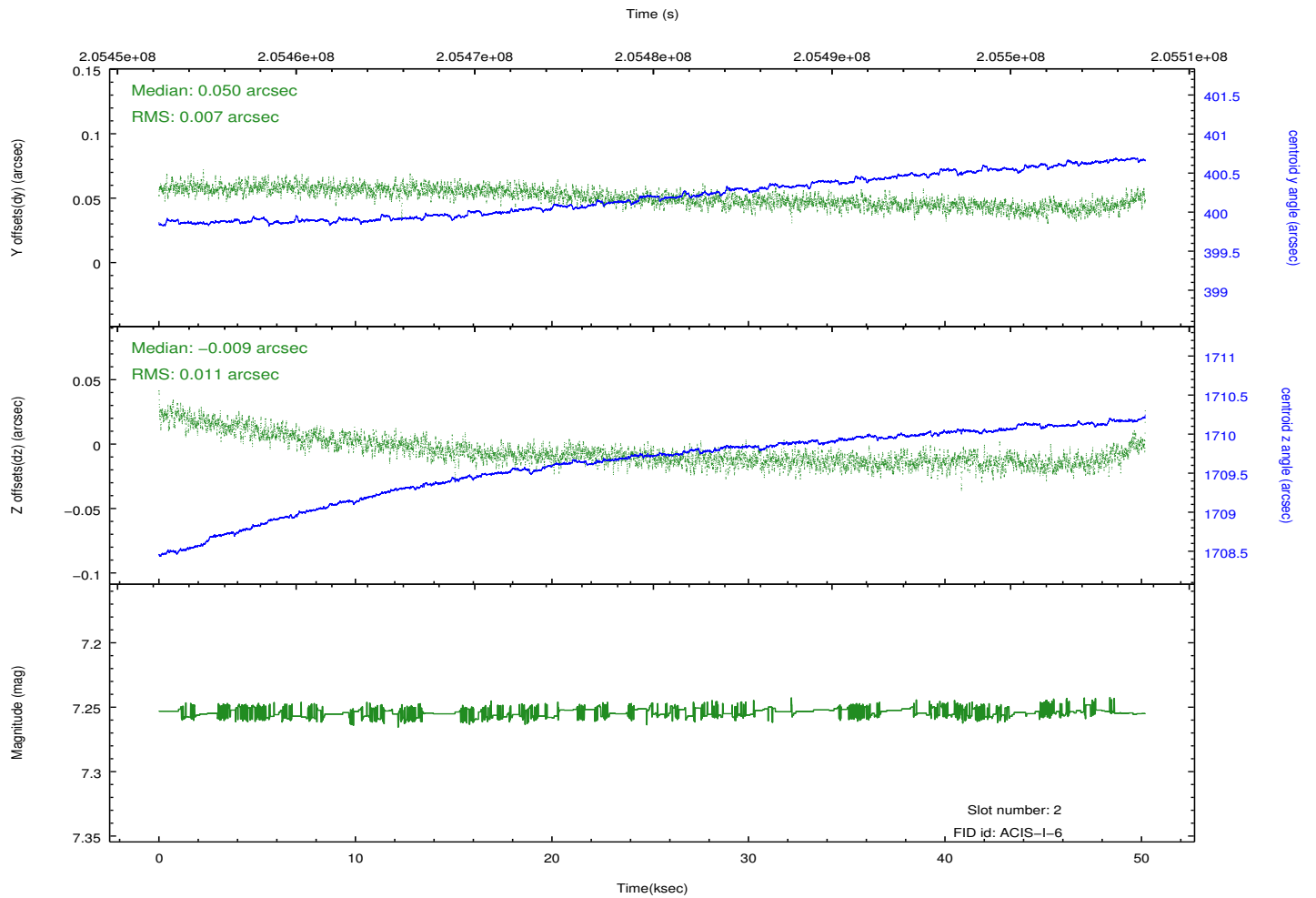
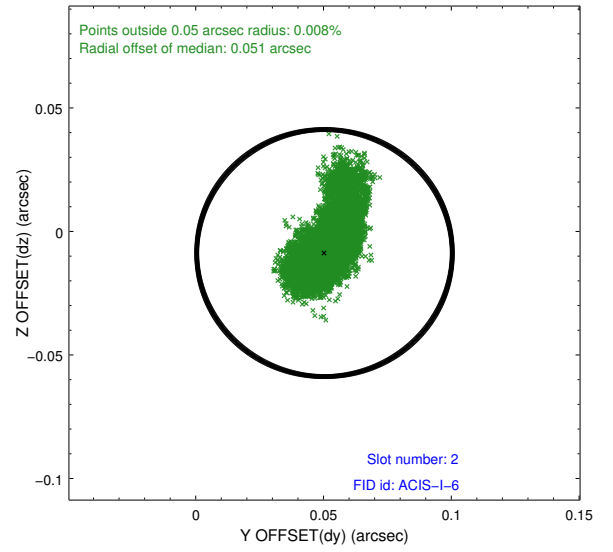
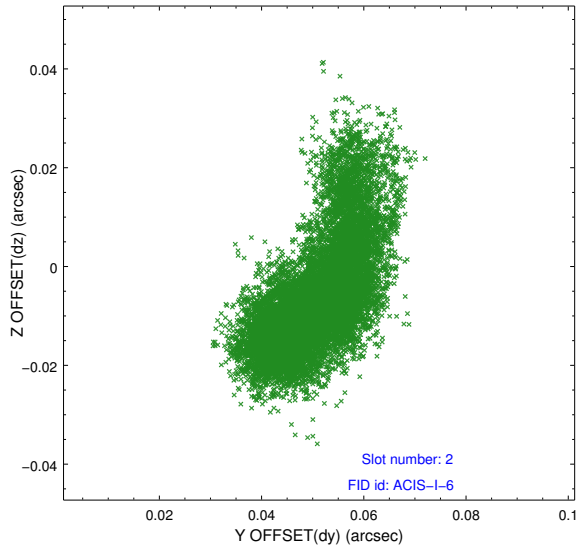
2.5.1 Slot 0



2.5.2 Slot 1



2.5.3 Slot 2



A Summary

A.1 Status

V&V Scientist	Jen Lauer
V&V Date (YYYY-MM-DD)	2012.12.20
V&V Edition	1
V&V Disposition and Status	OK
V&V Charge Time	50.179

A.2 Comments

Window constraint met. Observation extends past constraint window both before and after.