

V&V Reference Report

L2 ASCDS Version : 8.5.1

Observation 4693 - L2 Version 3
Chandra X-Ray Center

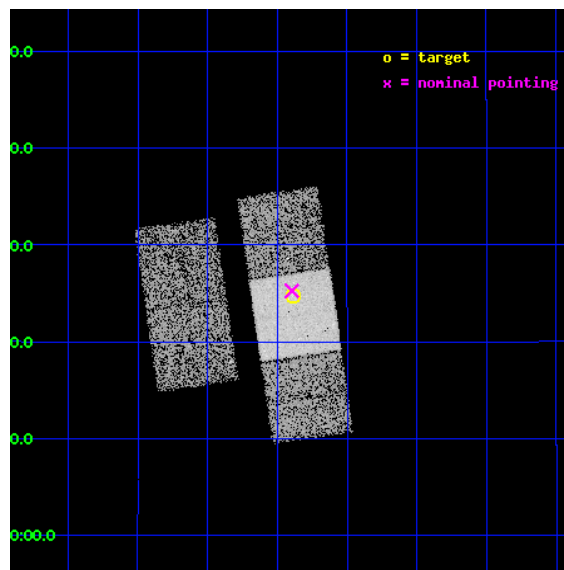
L2 Processing Date : Dec 17 2012

Contents

1	Front	2
2	OBI	3
2.1	OBI	3
2.1.1	Images	3
2.1.2	Bias	3
2.1.3	Parameters	4
2.1.4	Events	4
2.2	Compared Parameters	5
2.3	Aspect	6
2.4	Star Slots	9
2.4.1	Slot 3	9
2.4.2	Slot 4	10
2.4.3	Slot 5	11
2.4.4	Slot 6	12
2.4.5	Slot 7	13
2.5	FID Slots	14
2.5.1	Slot 0	14
2.5.2	Slot 1	15
2.5.3	Slot 2	16
A	Summary	17
A.1	Status	17
A.2	Comments	17

1 Front

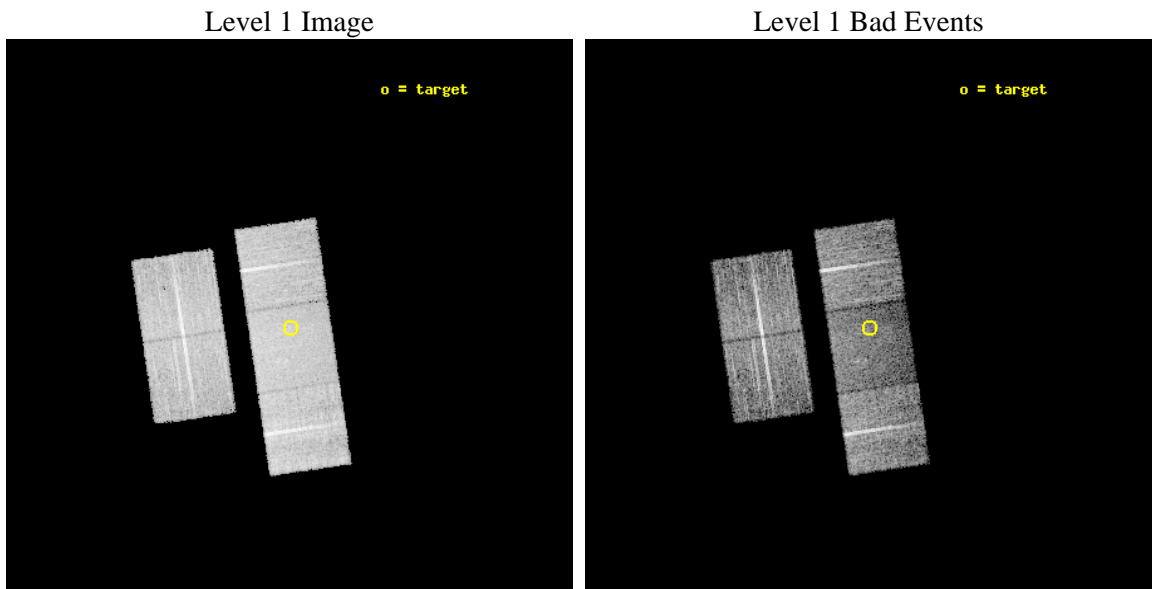
seq_num	600348	Sequence number
obs_id	4693	Observation id
title	Physics of Accretion Flows in Ultra-low Luminosity AGNs: A Mini Survey of a Distance-Limited Sample of Inactive Galaxies	Proposal tit
observer	Dr. Yuichi Terashima	Principal investigator
object	NGC 3412	Source name
dtcycle	0	
cycle	P	events from which exps? Prim/Second/Both
ra_targ	162.720833	Observer's specified target RA [deg]
dec_targ	13.411944	Observer's specified target Dec [deg]
ra_nom	162.72398398254	Nominal RA [deg]
dec_nom	13.421108185981	Nominal Dec [deg]
roll_nom	81.676431042208	Nominal Roll [deg]
revision	3	Processing version of data
ontime	10090.489887059	Sum of GTIs [s]
livetime	9958.6502081737	Livetime [s]
ontime2	10090.325727046	Sum of GTIs [s]
ontime3	10087.266806871	Sum of GTIs [s]
ontime6	10090.448847055	Sum of GTIs [s]
ontime7	10090.489887059	Sum of GTIs [s]
ontime8	10090.366767049	Sum of GTIs [s]
l2events	51189	Number of level 2 events



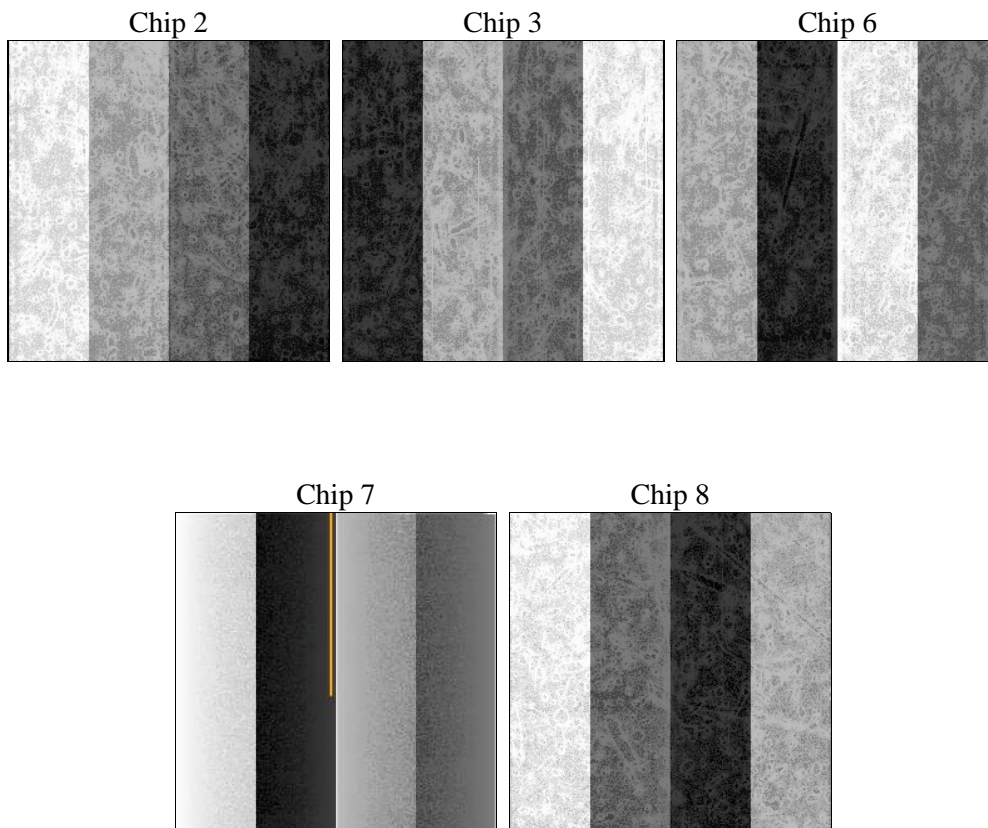
2 OBI

2.1 OBI

2.1.1 Images



2.1.2 Bias



2.1.3 Parameters

obi_num	3	Obi number	sched_exp_time	10000.000000	[s] Scheduled observation exposure time
ascdsver	8.5.1	Processing system revision	ontime	10090.489887059	Sum of GTIs [s]
caldsver	4.5.5	 	ontime2	10090.325727046	Sum of GTIs [s]
date	2012-12-17T02:27:49	Date and time of file creation	ontime3	10087.266806871	Sum of GTIs [s]
revision	3	Processing version of data	ontime6	10090.448847055	Sum of GTIs [s]
			ontime7	10090.489887059	Sum of GTIs [s]
			ontime8	10090.366767049	Sum of GTIs [s]
			l1events	332291	Number of level 1 events

2.1.4 Events

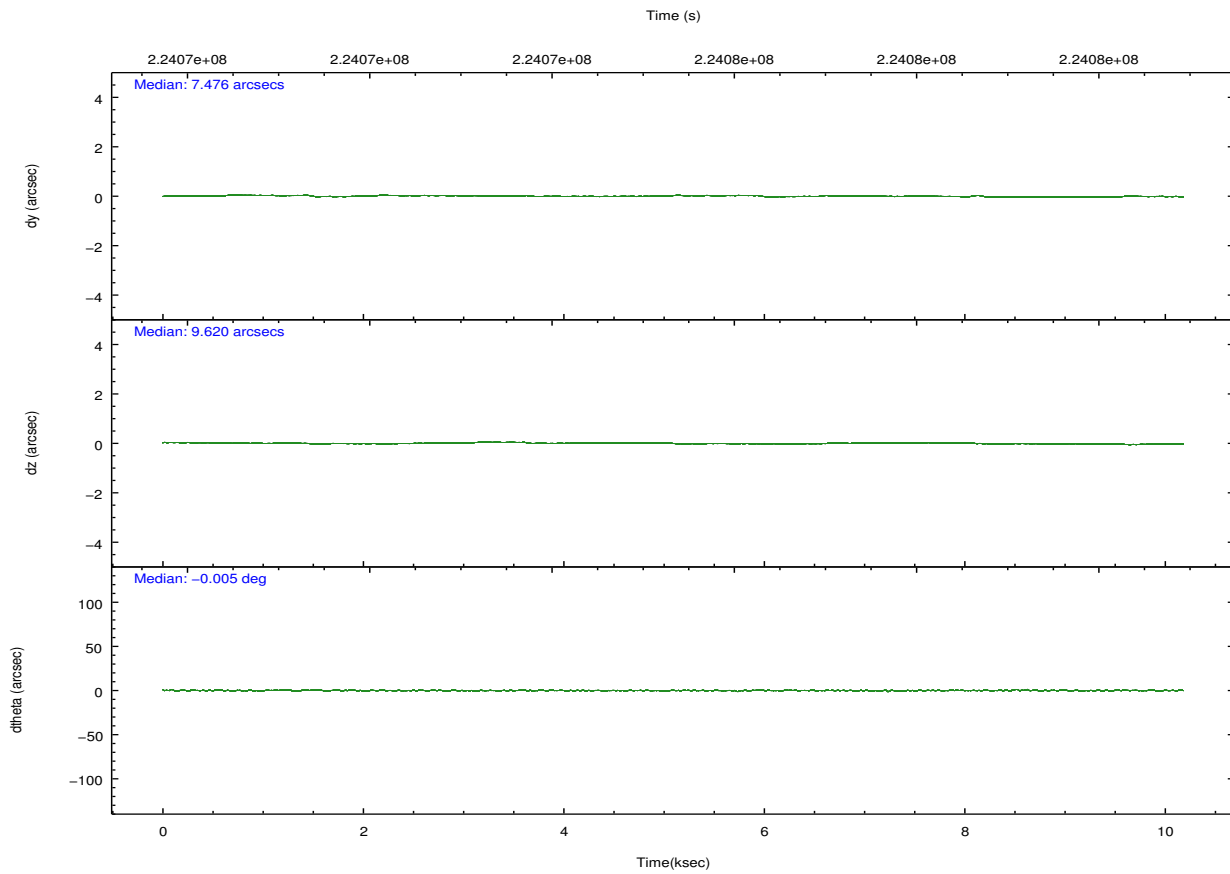
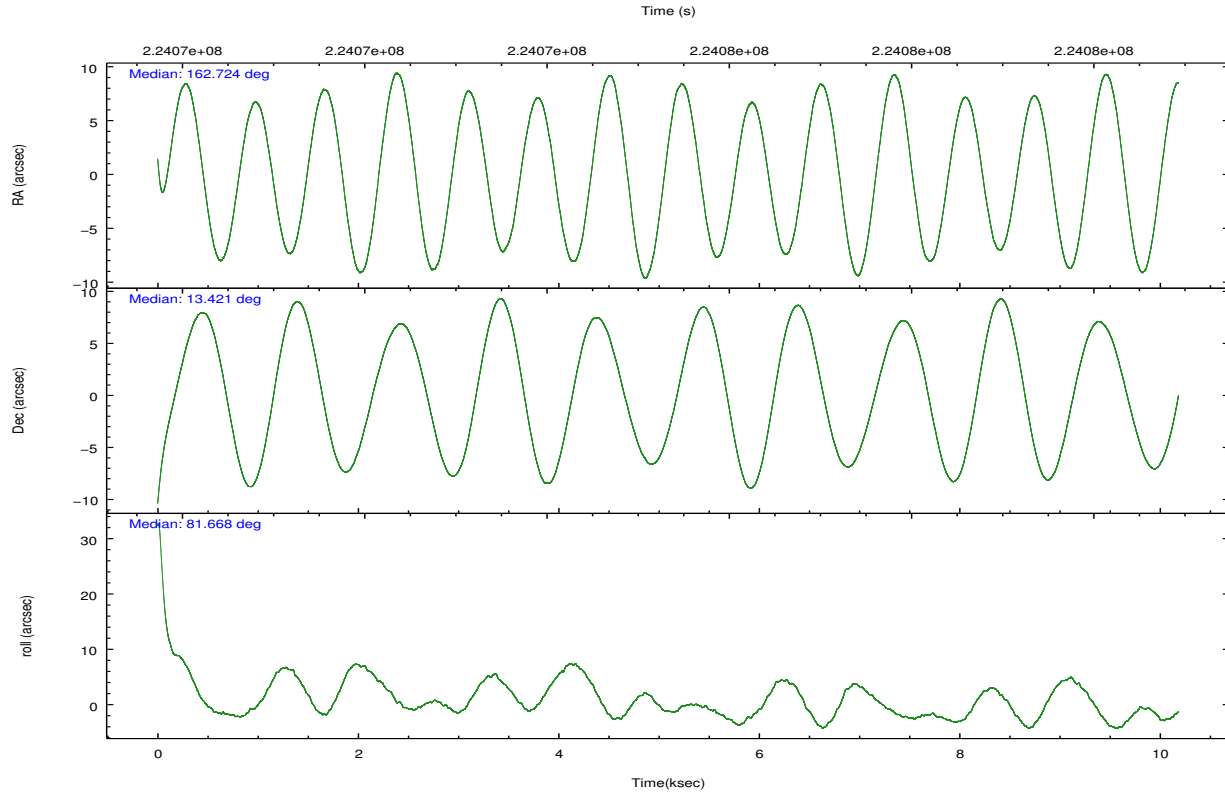
	ccd 2	ccd 3	ccd 6	ccd 7	ccd 8
level 1 events	63650	59468	62982	69159	77032
rejected events	58010	53883	56637	38203	59346
rejected %	91%	90%	89%	55%	77%

	ccd 2	ccd 3	ccd 6	ccd 7	ccd 8
grade 0 events	1957	1979	2158	2703	5415
	3%	3%	3%	3%	7%
grade 1 events	33	33	29	55	65
	0%	0%	0%	0%	0%
grade 2 events	1285	1172	1421	6244	3807
	2%	1%	2%	9%	4%
grade 3 events	637	628	723	2857	2061
	1%	1%	1%	4%	2%
grade 4 events	675	686	695	2873	1946
	1%	1%	1%	4%	2%
grade 5 events	2131	2402	2435	7182	3416
	3%	4%	3%	10%	4%
grade 6 events	1088	1121	1352	16299	4476
	1%	1%	2%	23%	5%
grade 7 events	55844	51447	54169	30946	55846
	87%	86%	86%	44%	72%

2.2 Compared Parameters

Parameter	Planned	Actual	Parameter	Planned	Actual
Instrument	ACIS	ACIS	Obspar format version number	7	7
Detector	ACIS-23678	ACIS-23678	Obspar file type	PREDICTED	ACTUAL
Grating	NONE	NONE	Obspar update status	NONE	UPDATED
Data mode	VFAINT	VFAINT	Number of optional ACIS chips dropped	0	0
Observation mode	POINTING	POINTING	On-chip summing requested	N	N
[deg] Pointing RA	162.734667	162.7239839825372	Subarray requested	NONE	NONE
[deg] Pointing Dec	13.395946	13.4211081859805	Alternating exposures requested	N	N
[deg] Pointing Roll	81.517307	81.67643104220804	[s] Primary exposure time	0.000000	3.1
[mm] SIM focus pos	-0.684267	-0.6828225247311905			
[mm] SIM defocus	0	0.001444936568705701			
[mm] SIM translation stage pos	-190.132523	-190.1425803651734			
[mm] SIM translation stage offset	0	0.01005778216563158			
[s] Observation start time (MET)	224070422.184000	224069458.21643			
Observation start date	2005-02-06T09:45:58	2005-02-06T09:30:58			
[s] Observation end time (MET)	224080422.184000	224081560.39198			
Observation end date	2005-02-06T12:32:38	2005-02-06T12:52:40			
Read mode	TIMED	TIMED			

2.3 Aspect

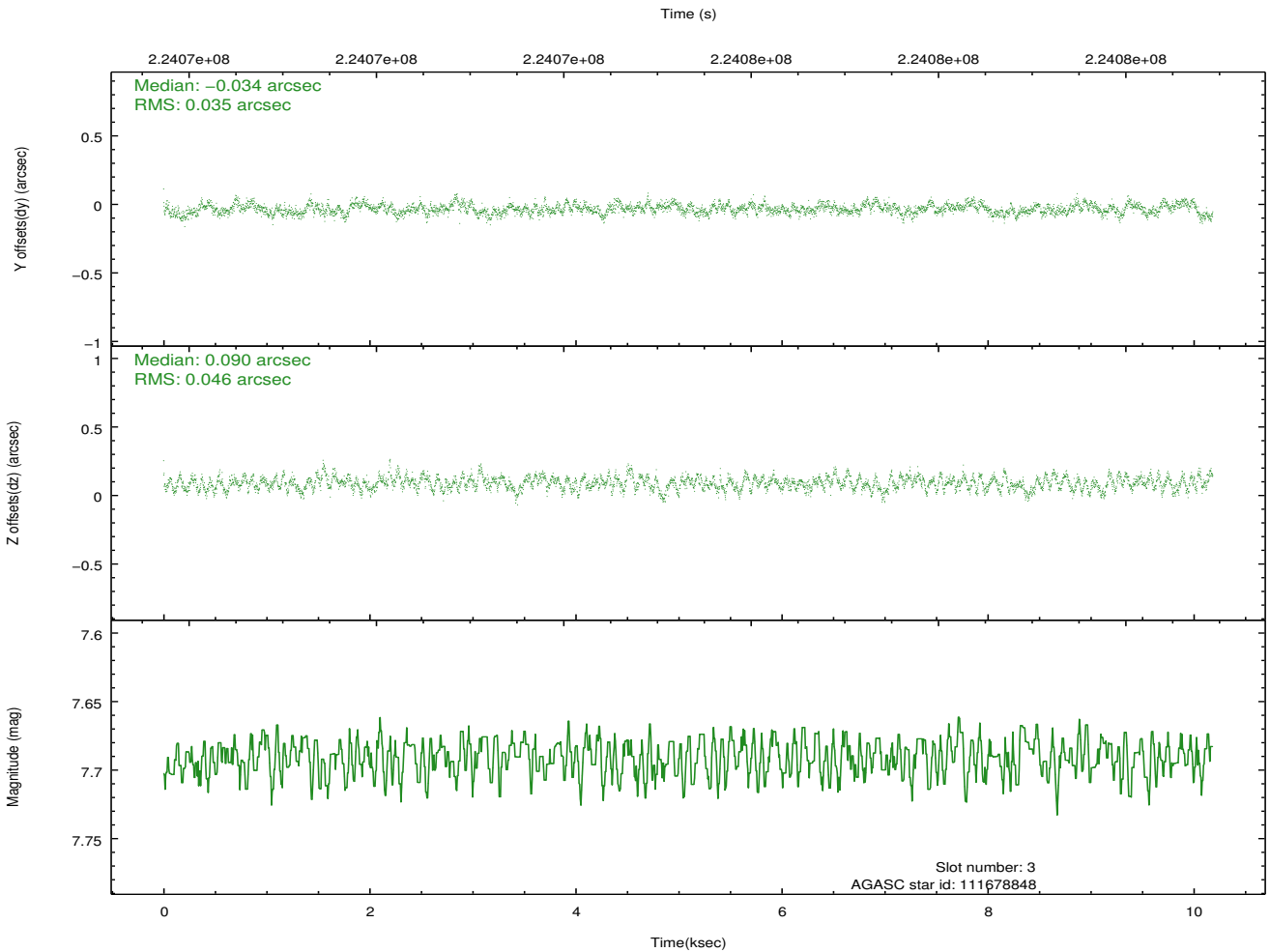
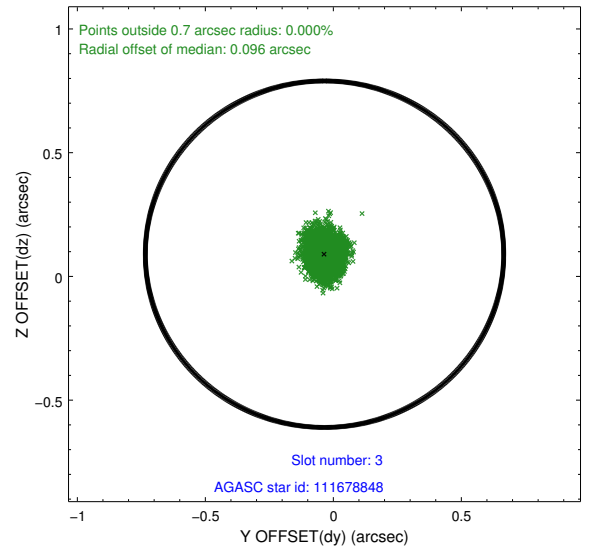
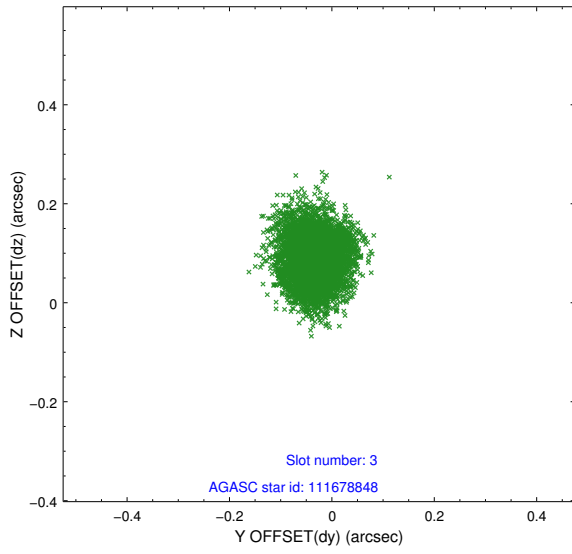


Slot Statistics

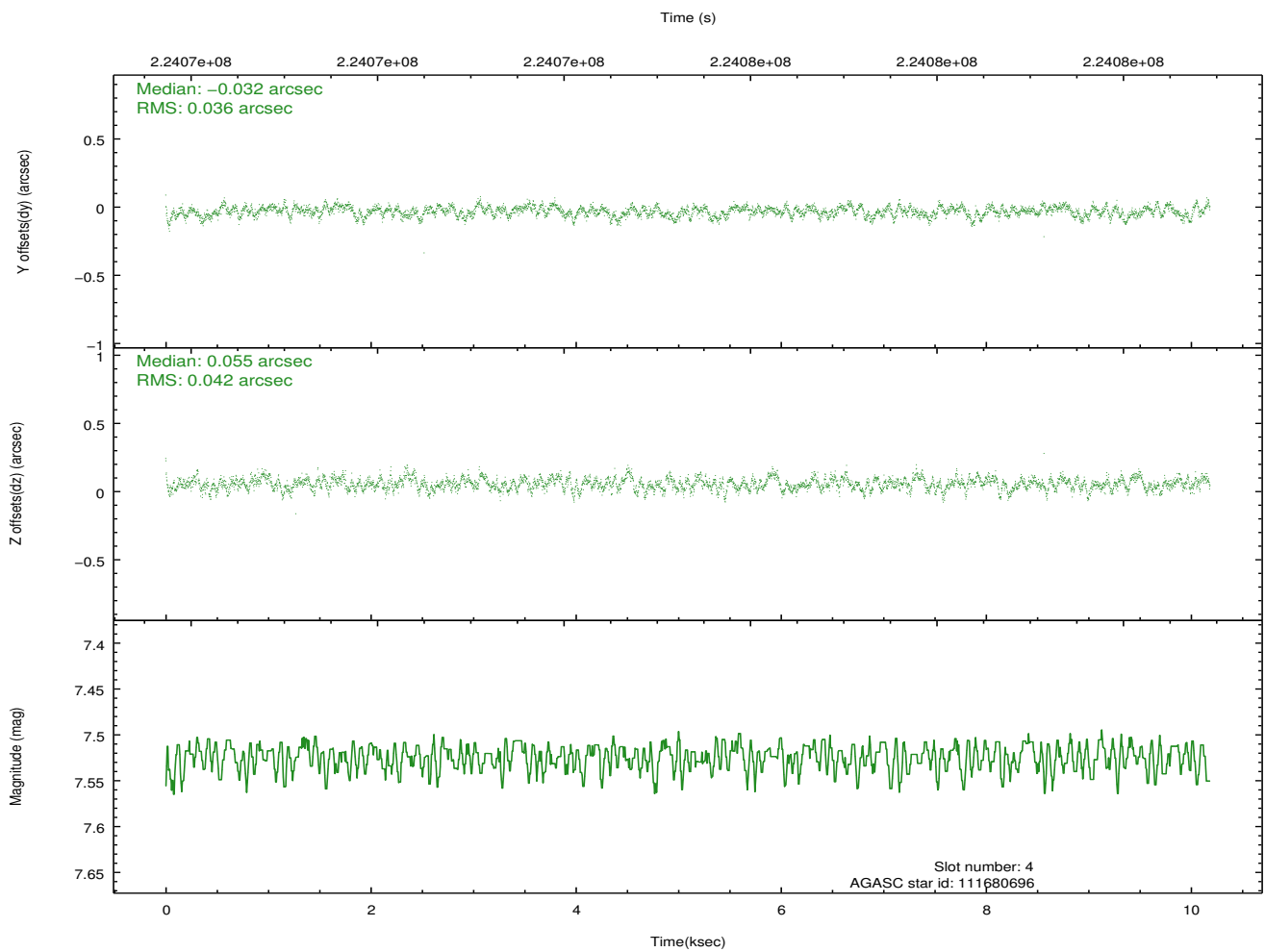
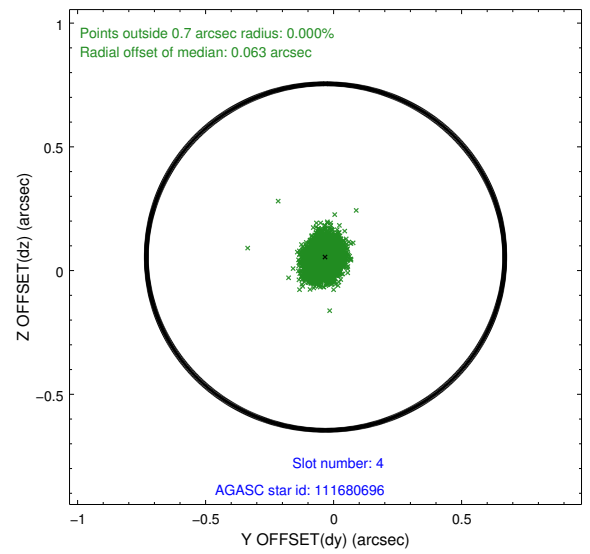
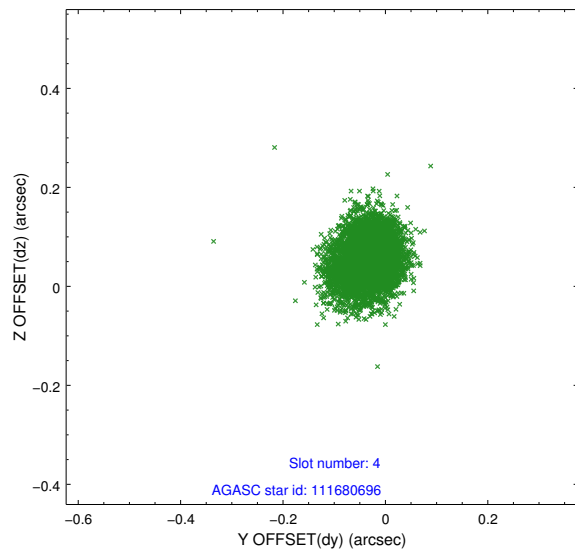
slot	status	id	mag	n_pts	med_dy	med_dz	dr1	dr2	ra	dec	mean_y	mean_z
0	FID	ACIS-S-2	7.10	2483	-0.045	-0.043	0.007	0.012	0.000000	0.000000	-760.25	-1730.86
1	FID	ACIS-S-4	7.21	2483	0.114	0.033	0.006	0.011	0.000000	0.000000	2152.91	177.22
2	FID	ACIS-S-5	7.24	2484	-0.100	0.019	0.006	0.011	0.000000	0.000000	-1812.52	171.39
3	GUIDE	111678848	7.69	4966	-0.034	0.090	0.062	0.100	162.937676	13.566004	710.75	-611.68
4	GUIDE	111680696	7.52	4969	-0.032	0.055	0.059	0.094	163.342710	13.118652	-669.94	-2254.77
5	GUIDE	111682048	8.85	4968	0.067	-0.122	0.076	0.125	162.332050	12.842718	-2177.38	1104.41
6	GUIDE	111684072	8.39	4968	0.071	-0.129	0.059	0.096	162.537547	12.809514	-2190.11	373.23
7	GUIDE	111678288	8.94	4965	-0.067	0.110	0.094	0.146	163.343524	12.746286	-1995.42	-2458.75

2.4 Star Slots

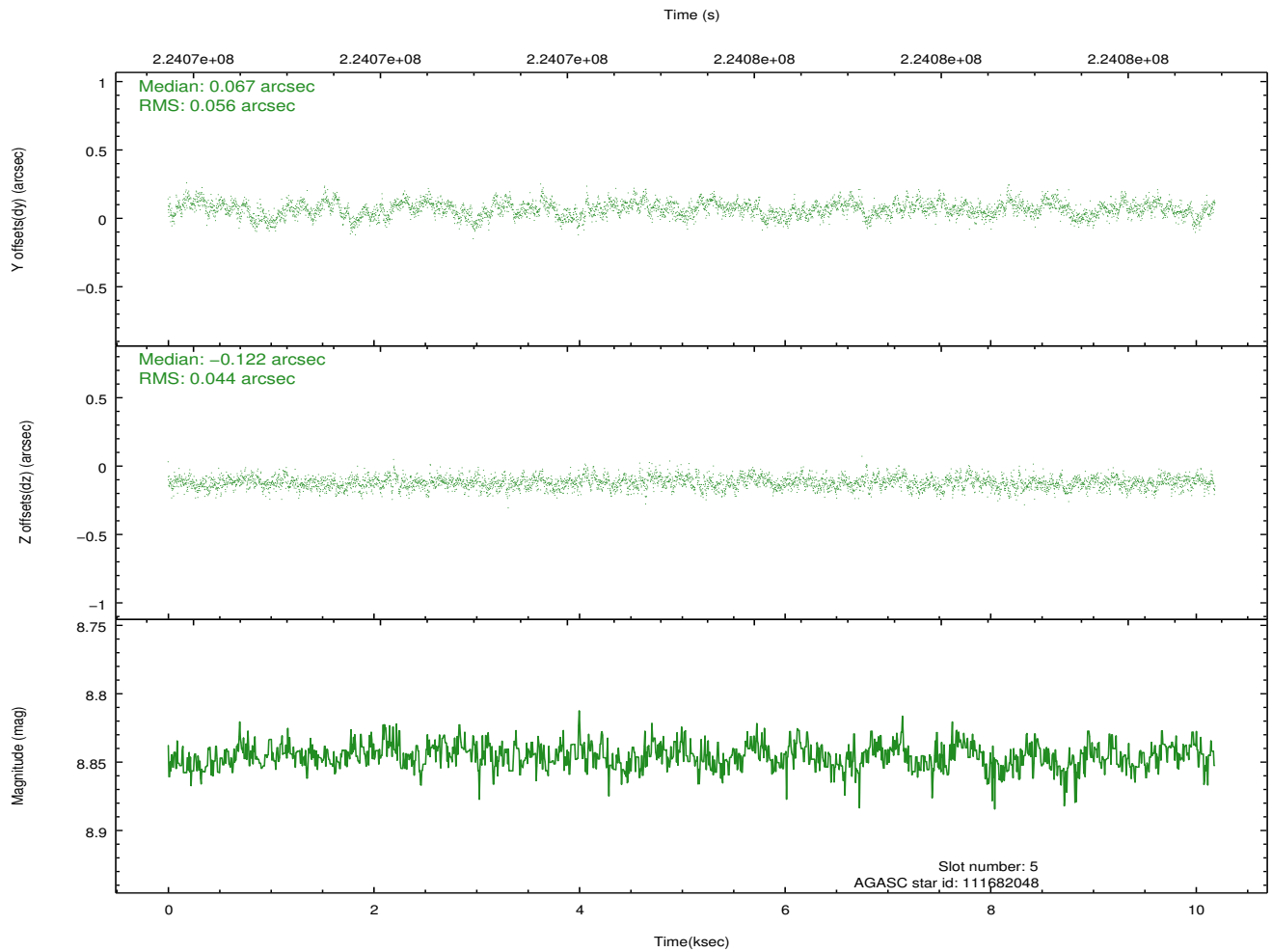
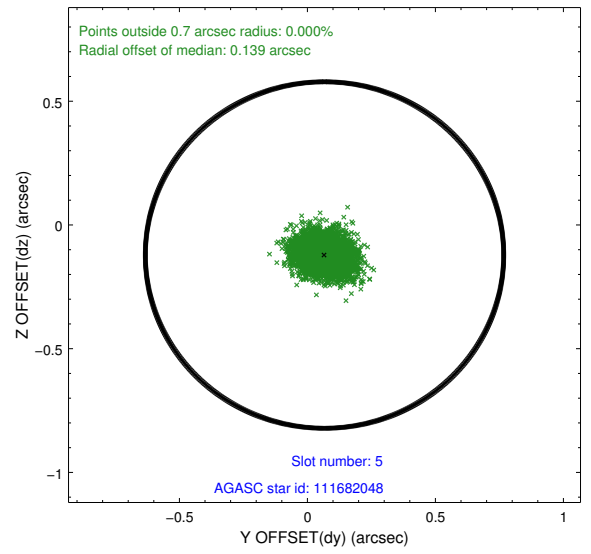
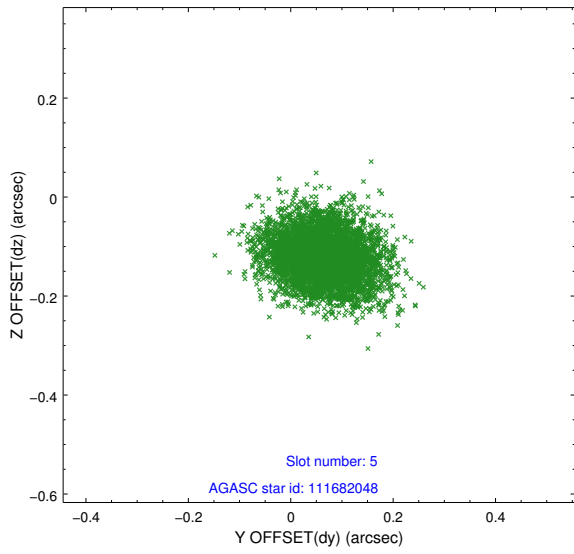
2.4.1 Slot 3



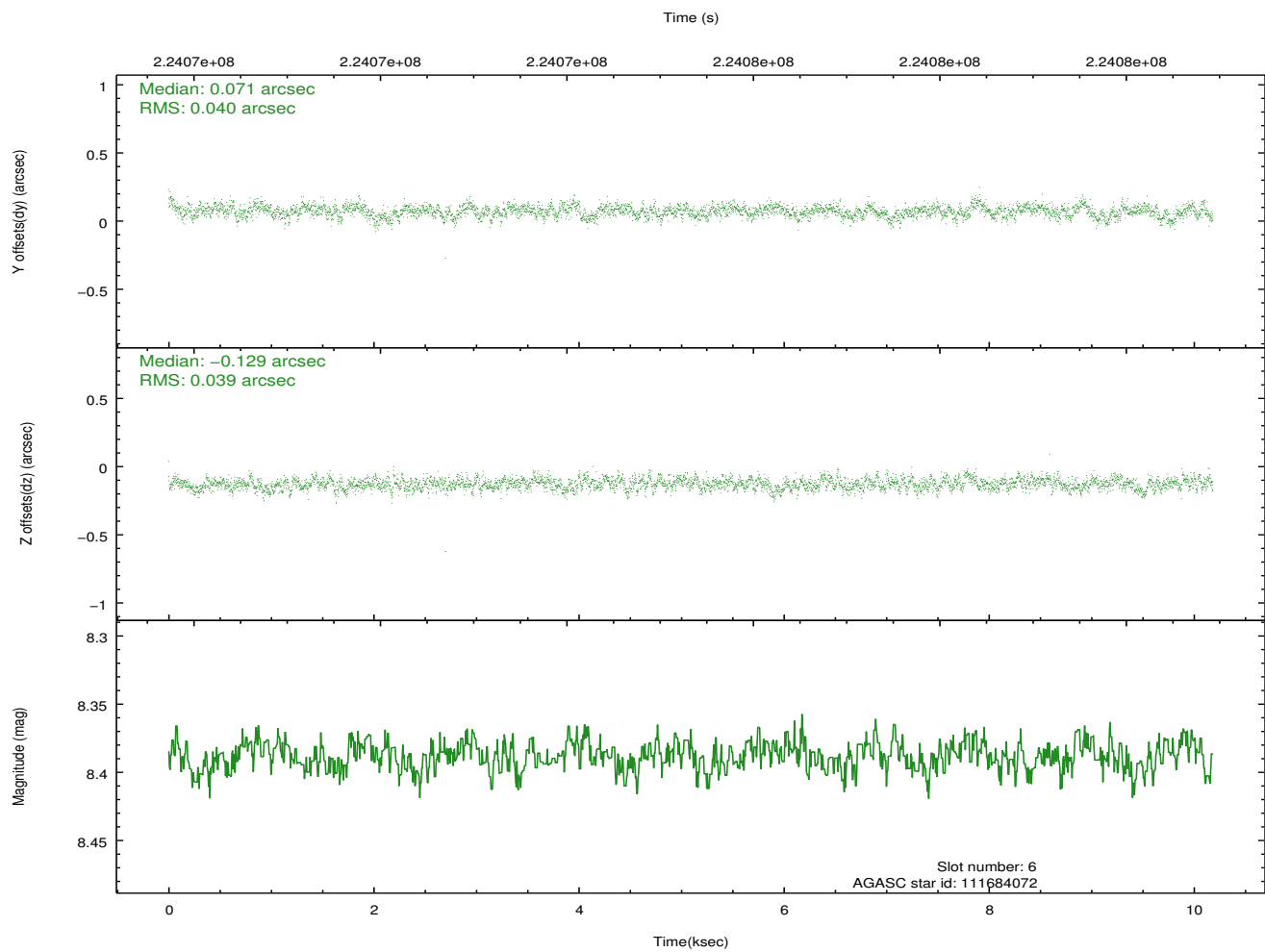
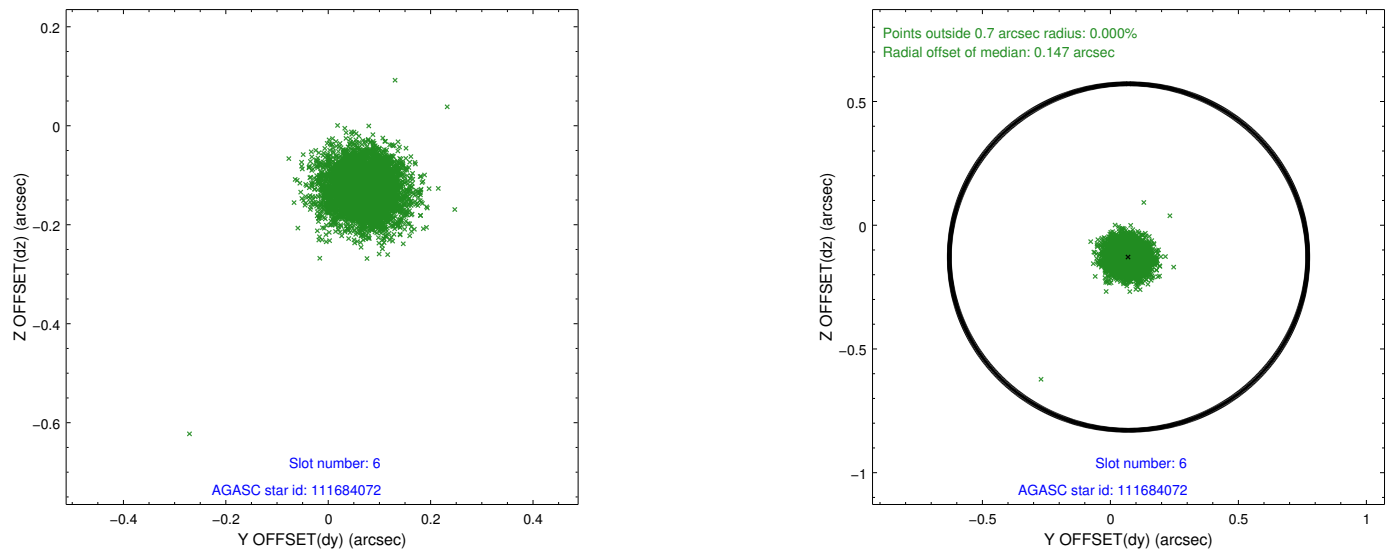
2.4.2 Slot 4



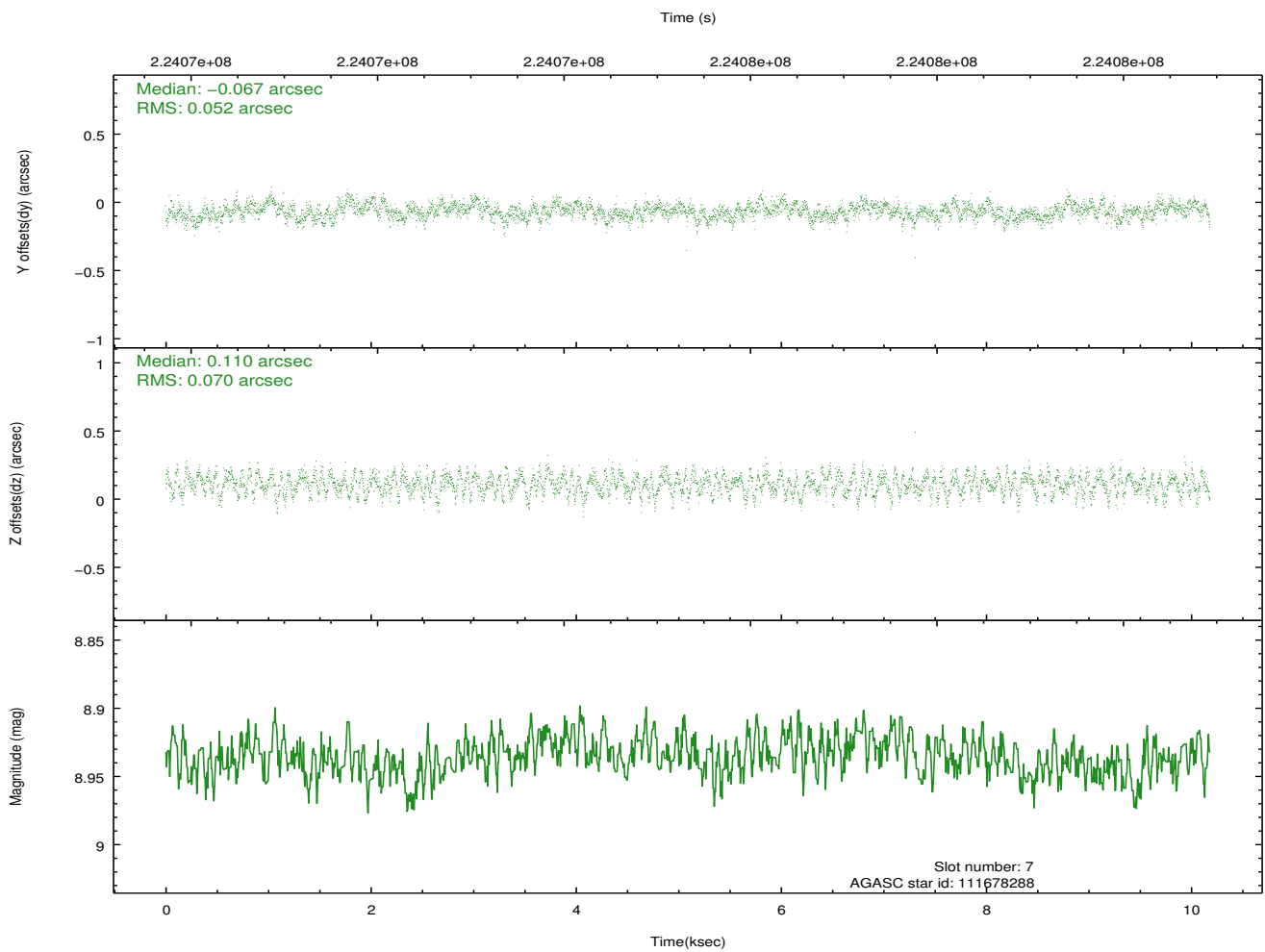
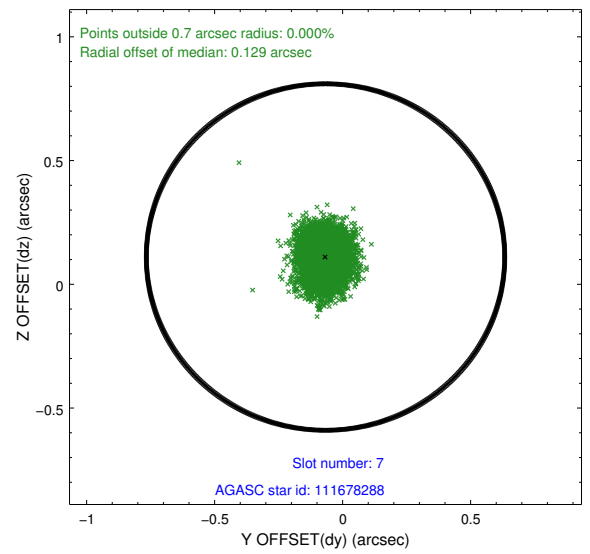
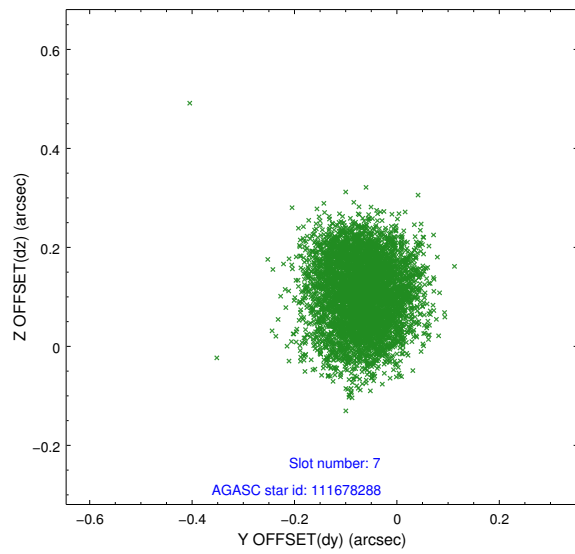
2.4.3 Slot 5



2.4.4 Slot 6

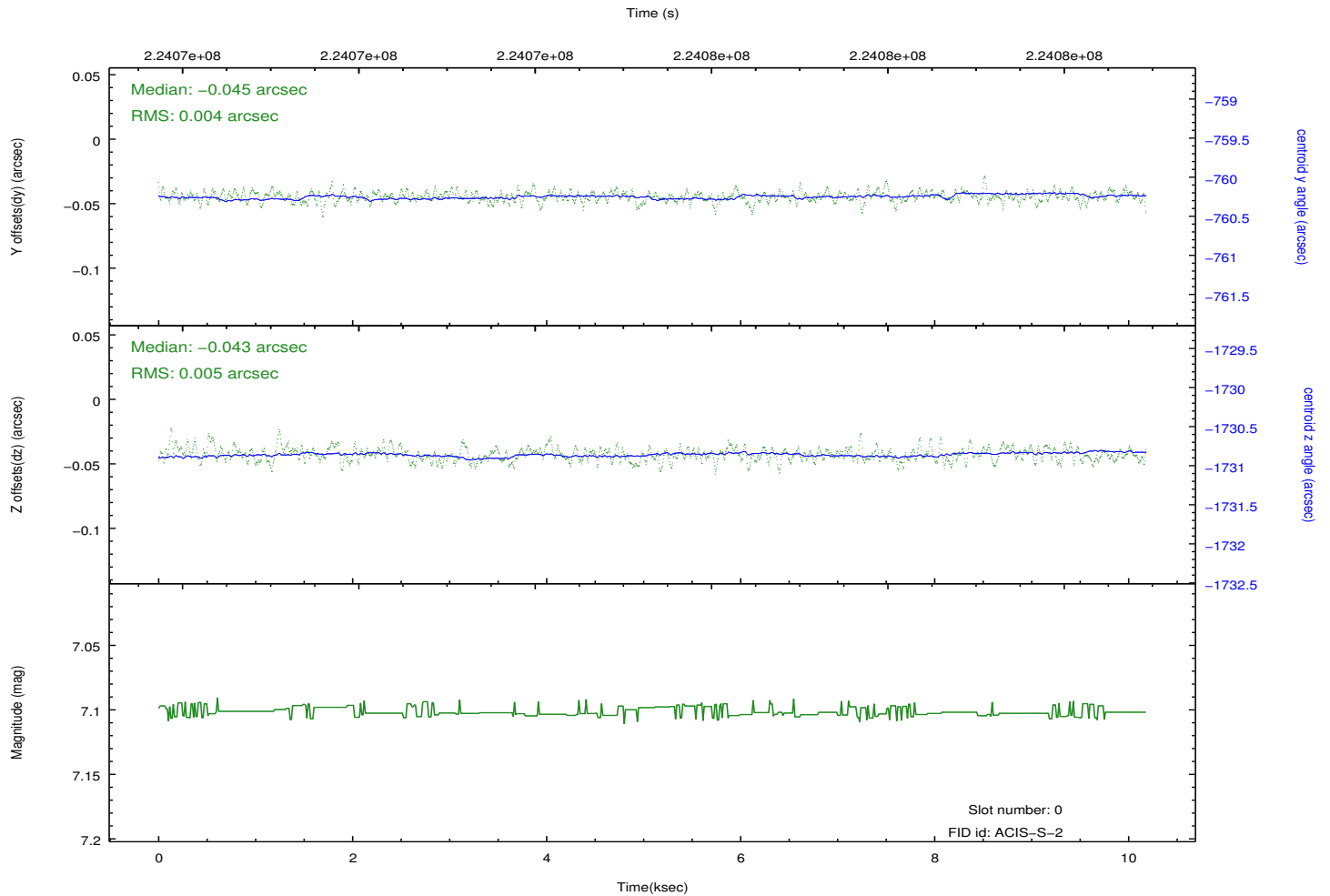
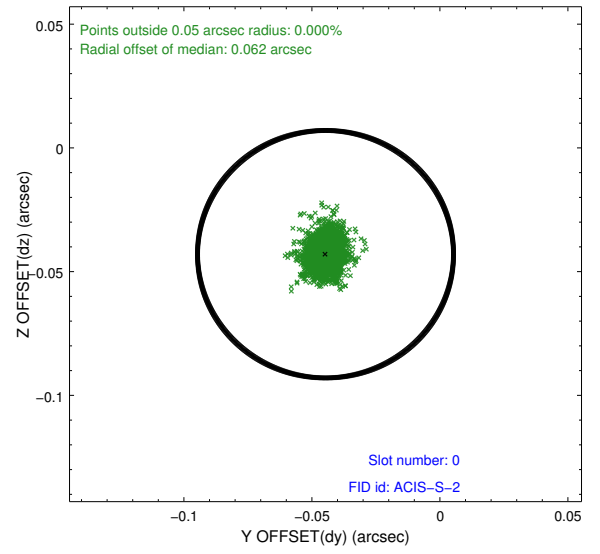
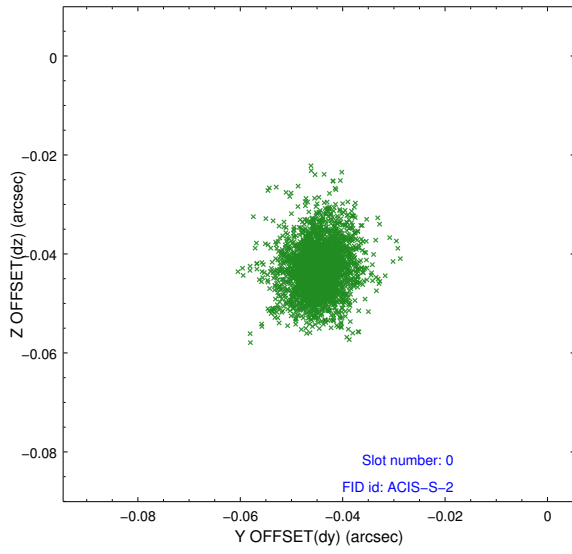


2.4.5 Slot 7

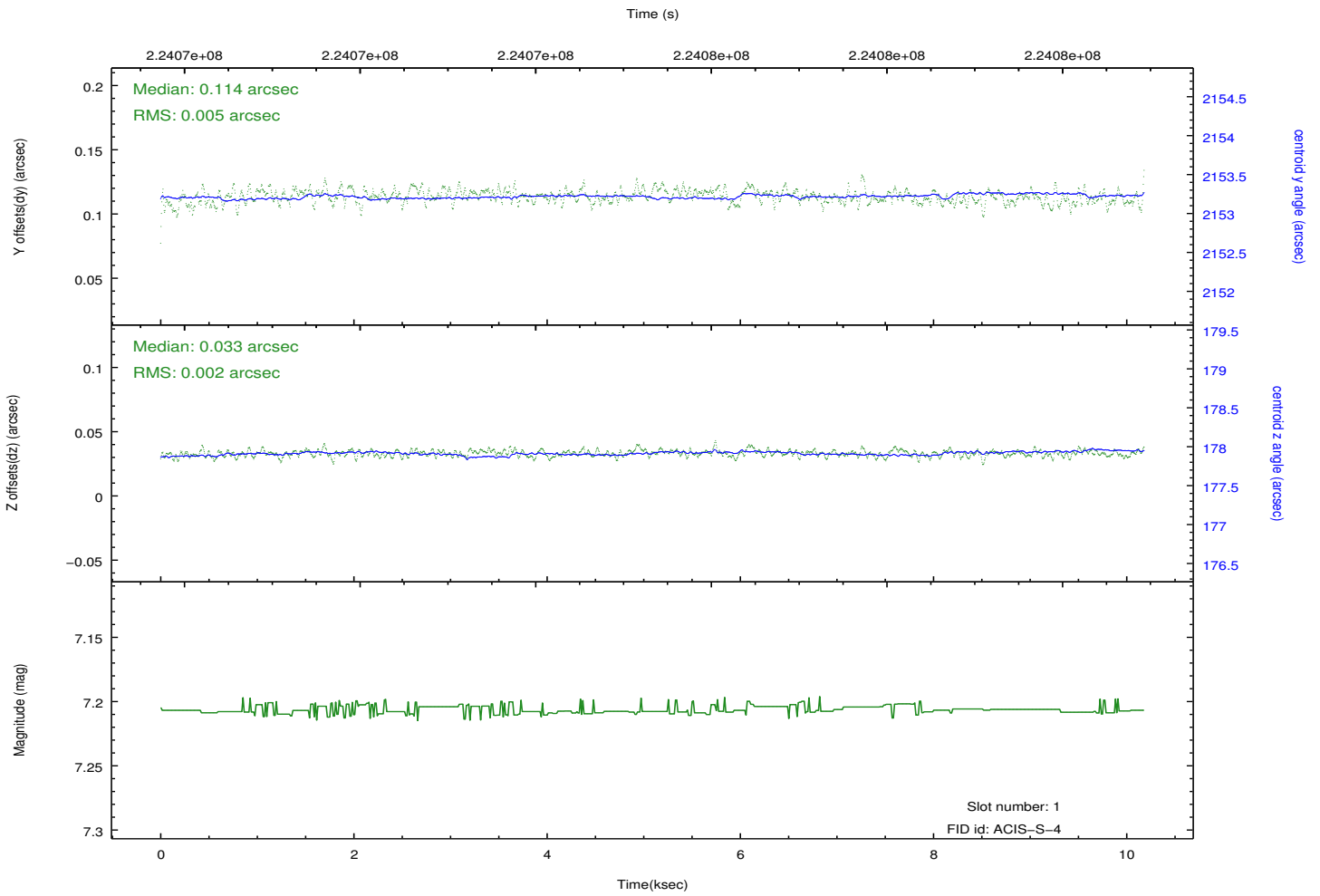
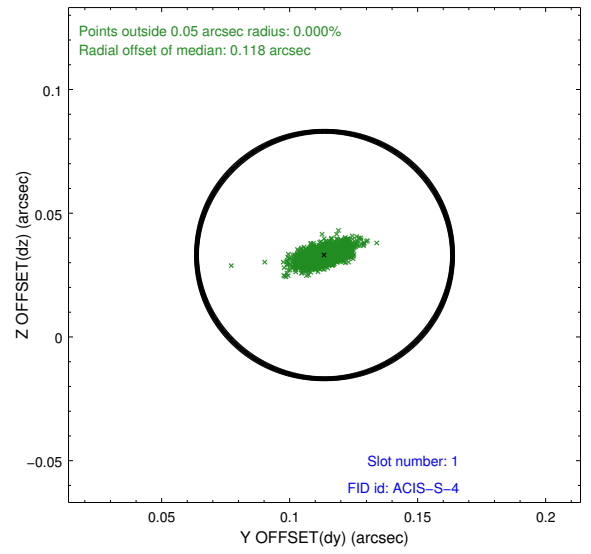
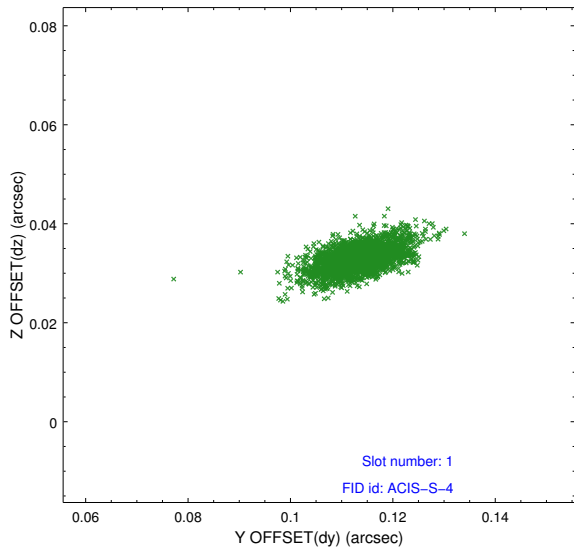


2.5 FID Slots

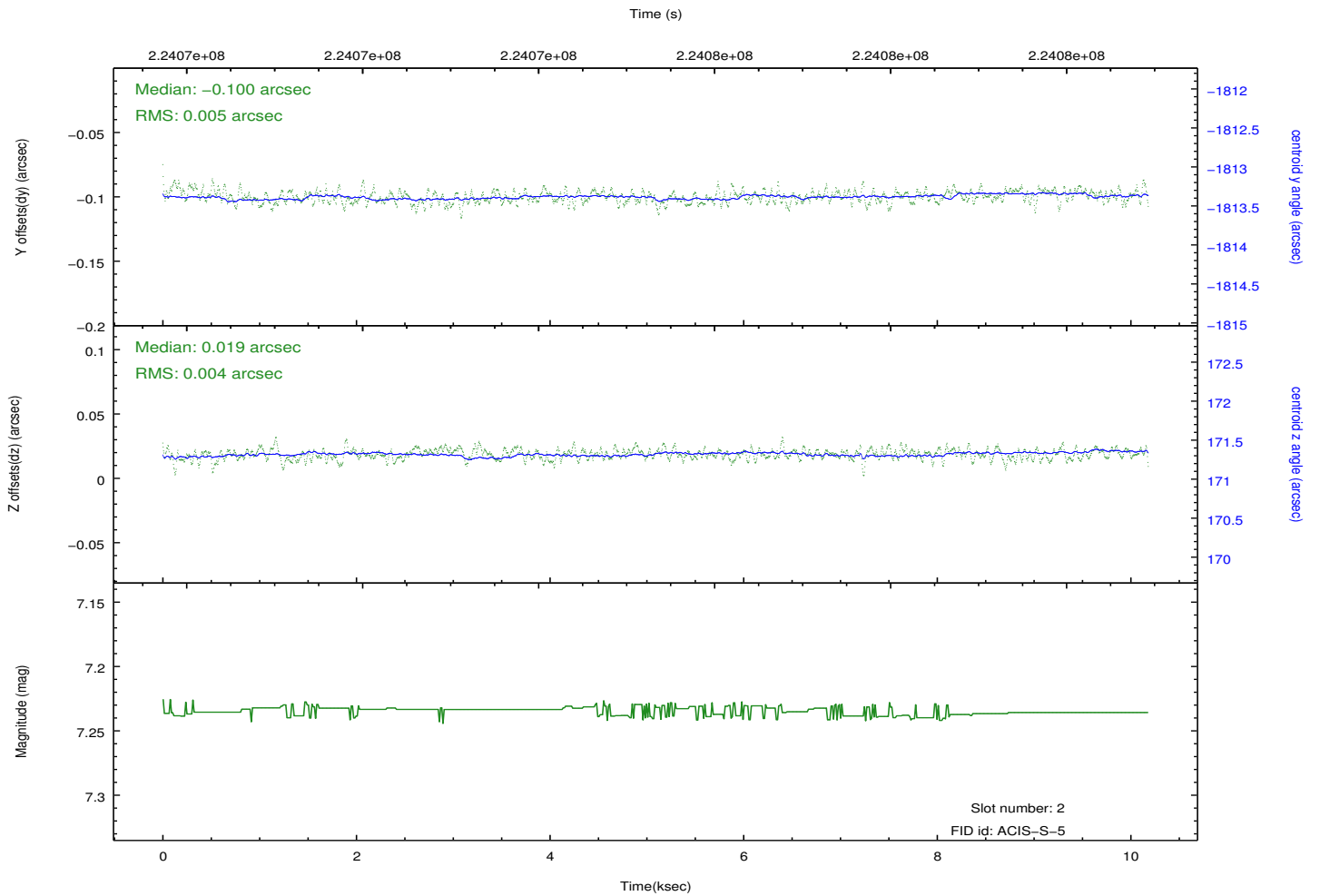
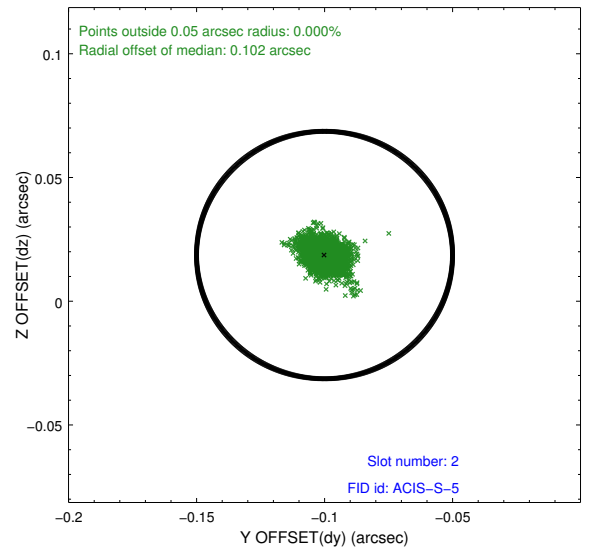
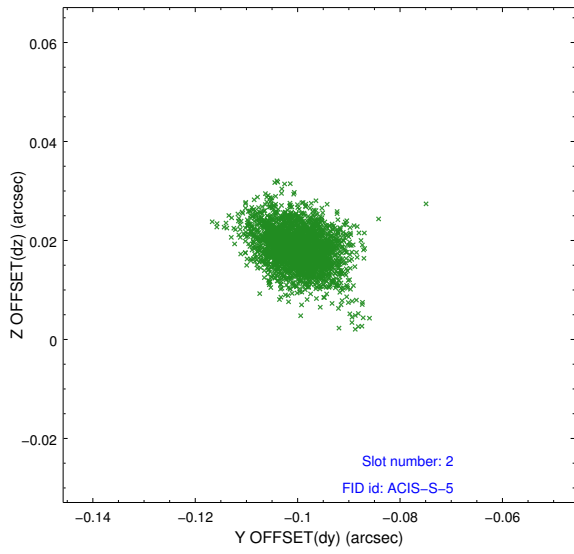
2.5.1 Slot 0



2.5.2 Slot 1



2.5.3 Slot 2



A Summary

A.1 Status

V&V Scientist	Jen Lauer
V&V Date (YYYY-MM-DD)	2013.01.09
V&V Edition	1
V&V Disposition and Status	OK
V&V Charge Time	10.09049

A.2 Comments