

V&V Reference Report

L2 ASCDS Version : 8.4.5

Observation 4703 - L2 Version 3
Chandra X-Ray Center

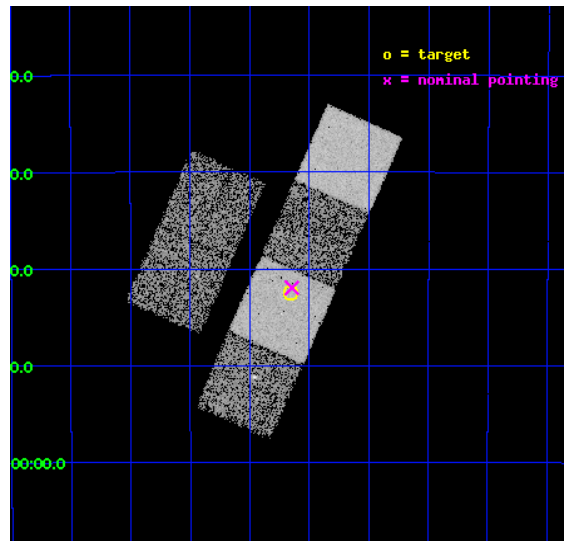
L2 Processing Date : Dec 3 2012

Contents

1	Front	2
2	OBI	3
2.1	OBI	3
2.1.1	Images	3
2.1.2	Bias	3
2.1.3	Parameters	4
2.1.4	Events	4
2.2	Compared Parameters	5
2.3	Aspect	6
2.4	Star Slots	9
2.4.1	Slot 3	9
2.4.2	Slot 4	10
2.4.3	Slot 5	11
2.4.4	Slot 6	12
2.4.5	Slot 7	13
2.5	FID Slots	14
2.5.1	Slot 0	14
2.5.2	Slot 1	15
2.5.3	Slot 2	16
A	Summary	17
A.1	Status	17
A.2	Comments	17

1 Front

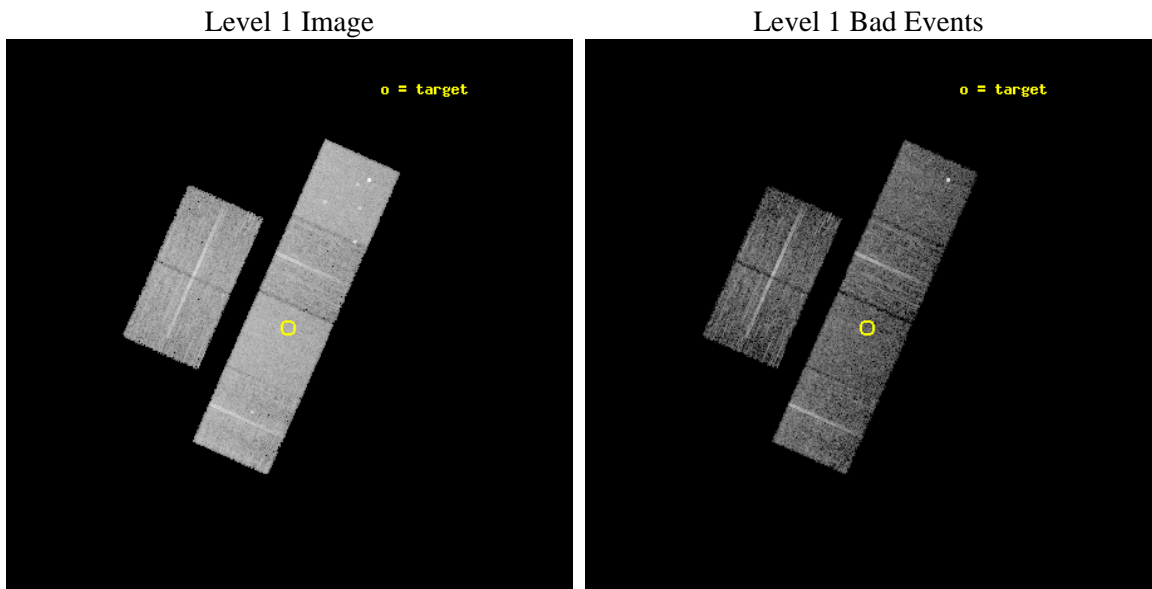
seq_num	600358	Sequence number
obs_id	4703	Observation id
title	Using the Sculptor Dwarf Spheroidal Galaxy to Constrain X-ray Binary Production in Population II	Proposal title
observer	Dr Thomas Maccarone	Principal investigator
object	SCULPTOR DWARF SPHEROIDAL	Source name
dtcycle	0	
cycle	P	events from which exps? Prim/Second/Both
ra_targ	15.039167	Observer's specified target RA [deg]
dec_targ	-33.708889	Observer's specified target Dec [deg]
ra_nom	15.036415385077	Nominal RA [deg]
dec_nom	-33.699506005217	Nominal Dec [deg]
roll_nom	113.89942788487	Nominal Roll [deg]
revision	3	Processing version of data
ontime	5955.1999778152	Sum of GTIs [s]
livetime	5879.7916499051	Livetime [s]
ontime2	5955.1999778152	Sum of GTIs [s]
ontime3	5955.1072458923	Sum of GTIs [s]
ontime5	5955.1893258989	Sum of GTIs [s]
ontime6	5955.1482858956	Sum of GTIs [s]
ontime7	5955.1999778152	Sum of GTIs [s]
ontime8	5955.0662059188	Sum of GTIs [s]
l2events	70505	Number of level 2 events



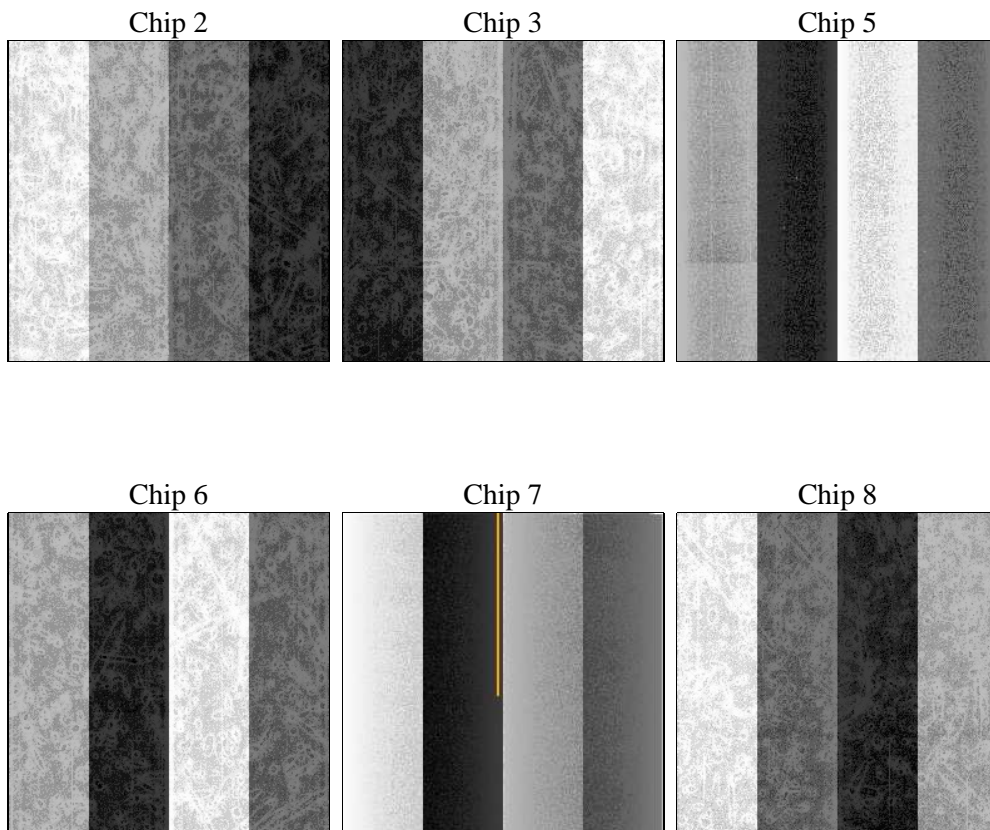
2 OBI

2.1 OBI

2.1.1 Images



2.1.2 Bias



2.1.3 Parameters

obi_num	0	Obi number	sched_exp_time	6000.000000	[s] Scheduled observation exposure time
ascdsver	8.4.5	Processing system revision	ontime	5955.1999778152	Sum of GTIs [s]
caldbver	4.5.2	 	ontime2	5955.1999778152	Sum of GTIs [s]
date	2012-12-03T05:19:39	Date and time of file creation	ontime3	5955.1072458923	Sum of GTIs [s]
revision	3	Processing version of data	ontime5	5955.1893258989	Sum of GTIs [s]
			ontime6	5955.1482858956	Sum of GTIs [s]
			ontime7	5955.1999778152	Sum of GTIs [s]
			ontime8	5955.0662059188	Sum of GTIs [s]
			l1events	315436	Number of level 1 events

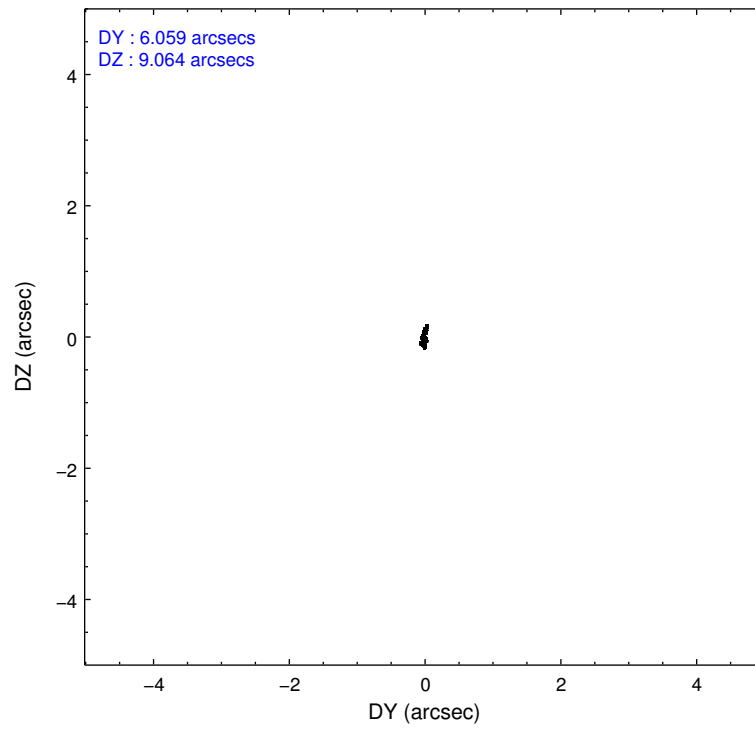
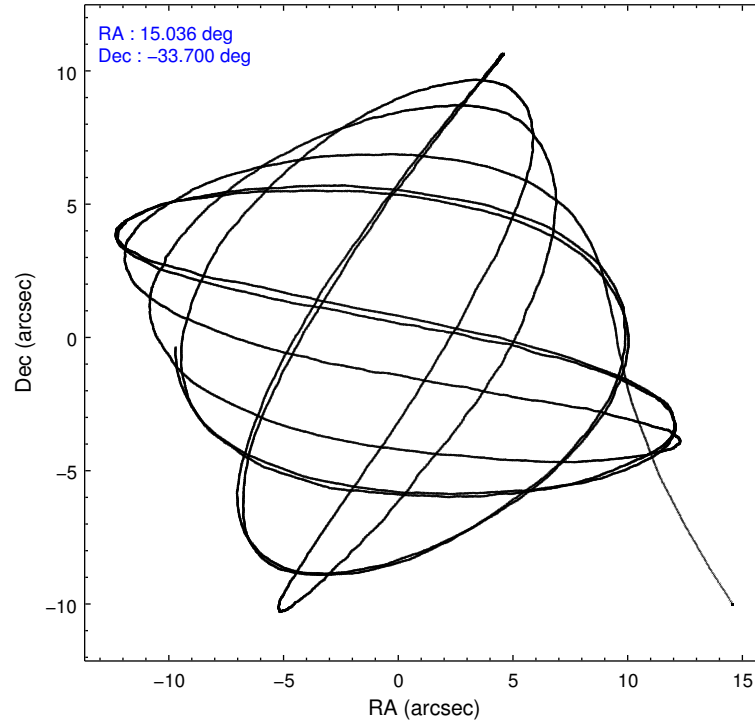
2.1.4 Events

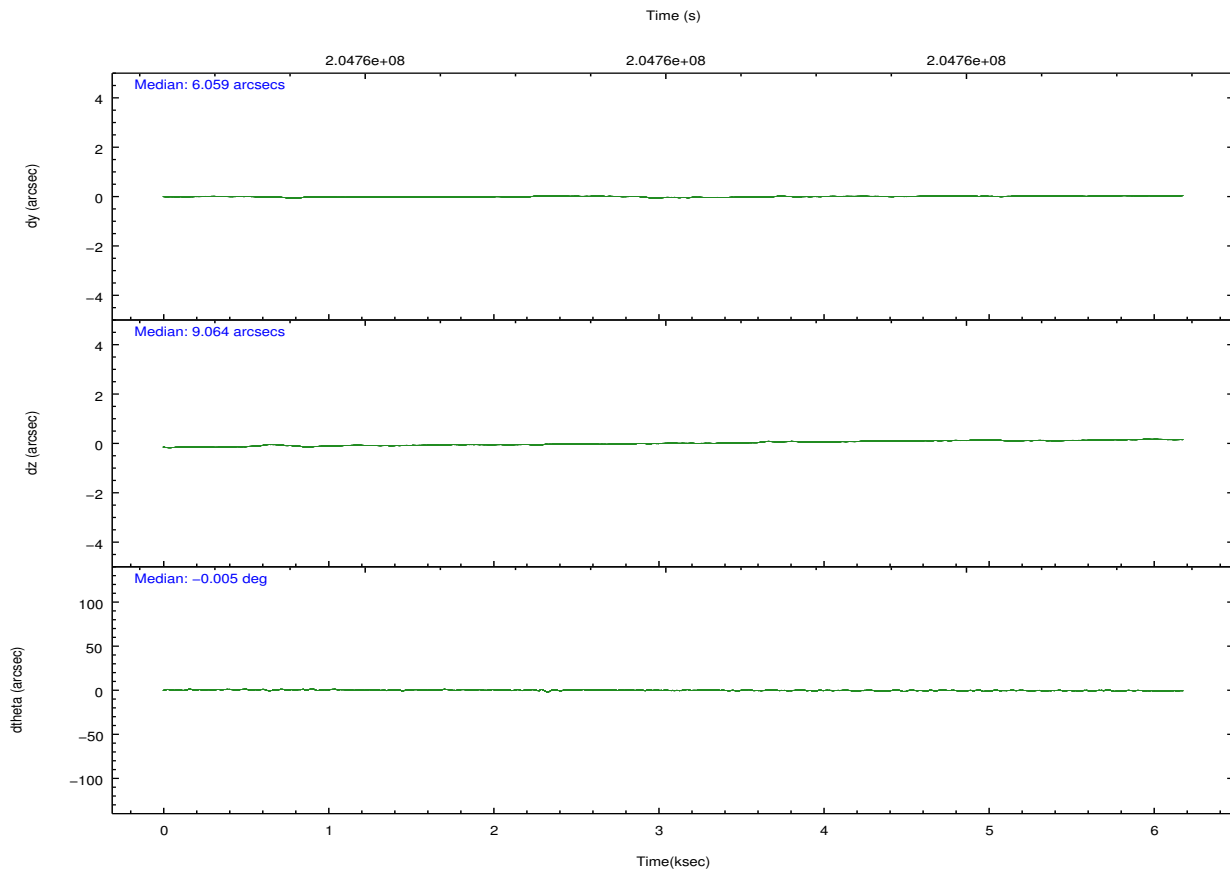
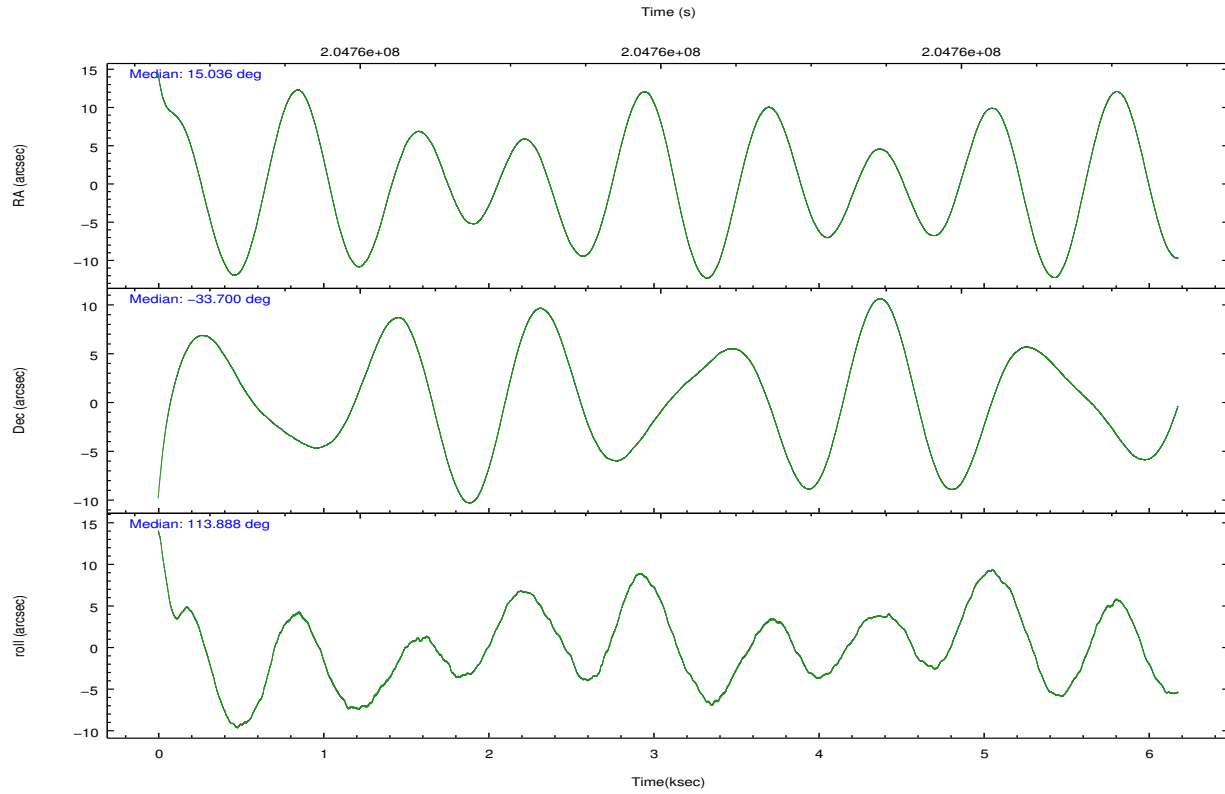
	ccd 2	ccd 3	ccd 5	ccd 6	ccd 7	ccd 8		ccd 2	ccd 3	ccd 5	ccd 6	ccd 7	ccd 8
level 1 events	44116	43287	67048	44951	59817	56217	grade 0 events	2293	2241	3456	2042	2228	4133
rejected events	38889	38338	36861	39701	35344	43632		5%	5%	5%	4%	3%	7%
rejected %	88%	88%	54%	88%	59%	77%	grade 1 events	28	25	898	25	65	45
								0%	0%	1%	0%	0%	0%
							grade 2 events	1068	923	8577	1121	4886	2640
								2%	2%	12%	2%	8%	4%
							grade 3 events	498	494	1118	471	2092	1311
								1%	1%	1%	1%	3%	2%
							grade 4 events	523	484	1212	523	2169	1272
								1%	1%	1%	1%	3%	2%
							grade 5 events	1717	1917	4764	2066	5769	2657
								3%	4%	7%	4%	9%	4%
							grade 6 events	848	810	15859	1100	13124	3238
								1%	1%	23%	2%	21%	5%
							grade 7 events	37141	36393	31164	37603	29484	40921
								84%	84%	46%	83%	49%	72%

2.2 Compared Parameters

Parameter	Planned	Actual	Parameter	Planned	Actual
Instrument	ACIS	ACIS	Obspar format version number	7	7
Detector	ACIS-235678	ACIS-235678	Obspar file type	PREDICTED	ACTUAL
Grating	NONE	NONE	Obspar update status	NONE	UPDATED
Data mode	VFAINT	VFAINT	Number of optional ACIS chips dropped	0	0
Observation mode	POINTING	POINTING	On-chip summing requested	N	N
[deg] Pointing RA	15.063102	15.03641538507702	Subarray requested	NONE	NONE
[deg] Pointing Dec	-33.715236	-33.69950600521697	Alternating exposures requested	N	N
[deg] Pointing Roll	113.757600	113.8994278848718	[s] Primary exposure time	0.000000	3.2
[mm] SIM focus pos	-0.684267	-0.6828225247311905			
[mm] SIM defocus	0	0.001444936568705701			
[mm] SIM translation stage pos	-190.132523	-190.1400660498719			
[mm] SIM translation stage offset	0	0.00754346686406393			
[s] Observation start time (MET)	204755133.184000	204754162.08934			
Observation start date	2004-06-27T20:24:29	2004-06-27T20:09:22			
[s] Observation end time (MET)	204761133.184000	204761712.75218			
Observation end date	2004-06-27T22:04:29	2004-06-27T22:15:12			
Read mode	TIMED	TIMED			

2.3 Aspect



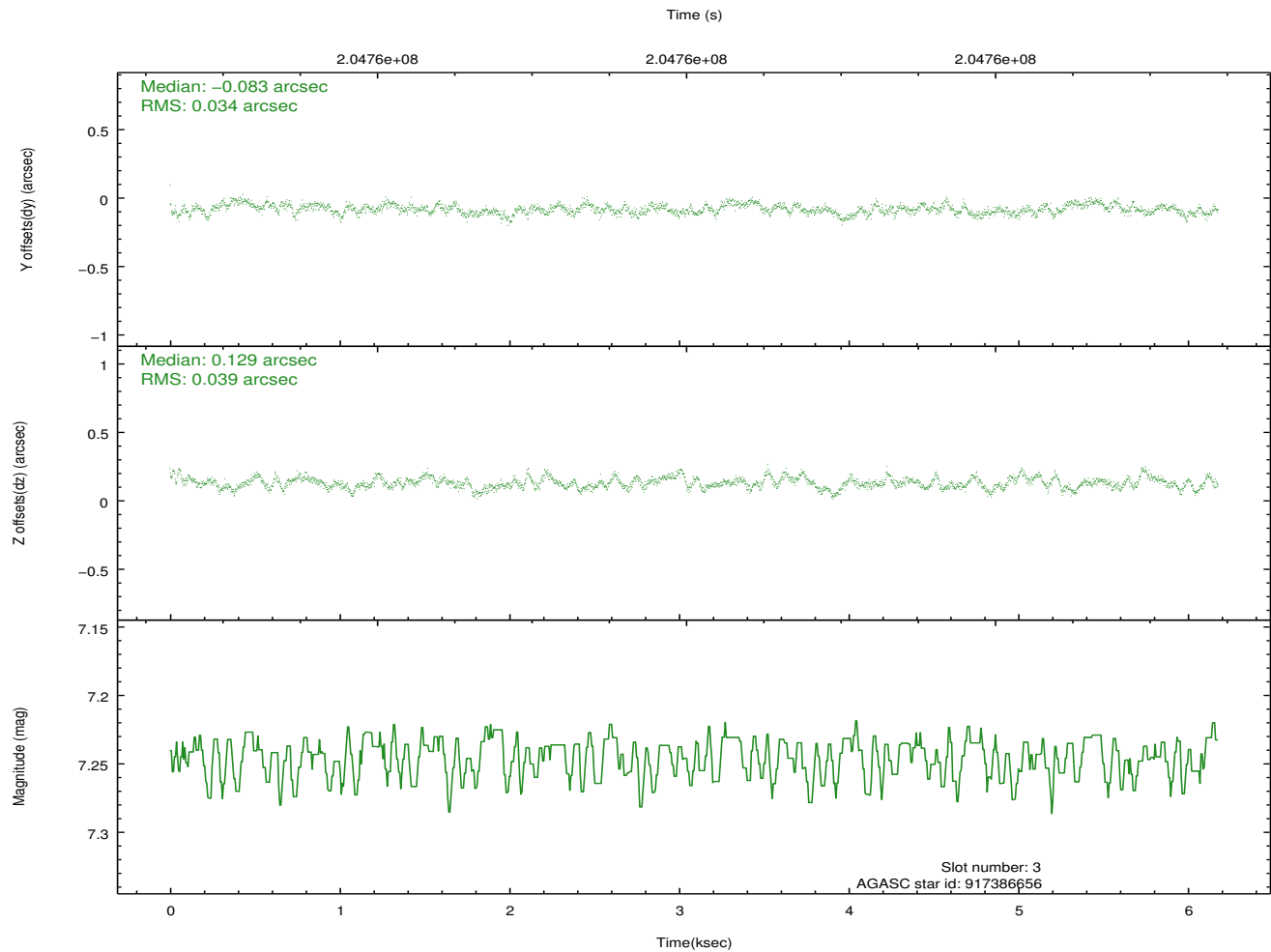
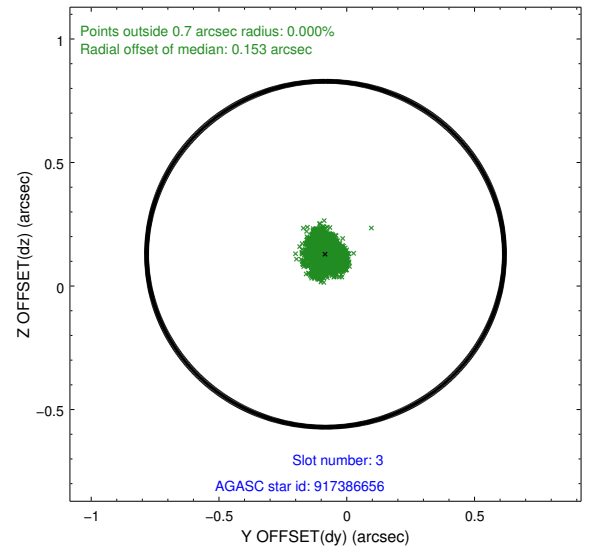
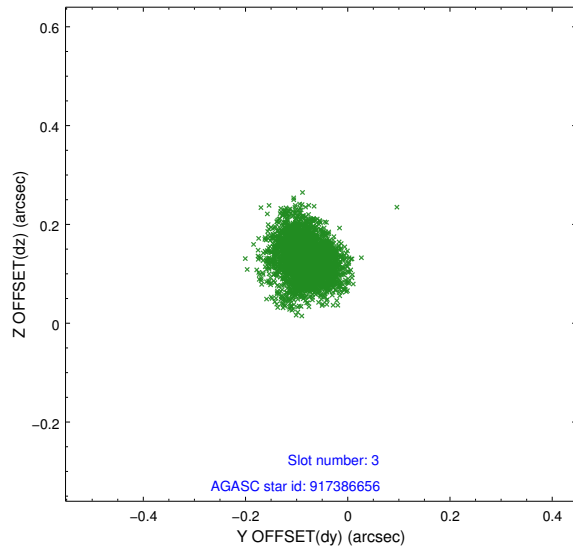


Slot Statistics

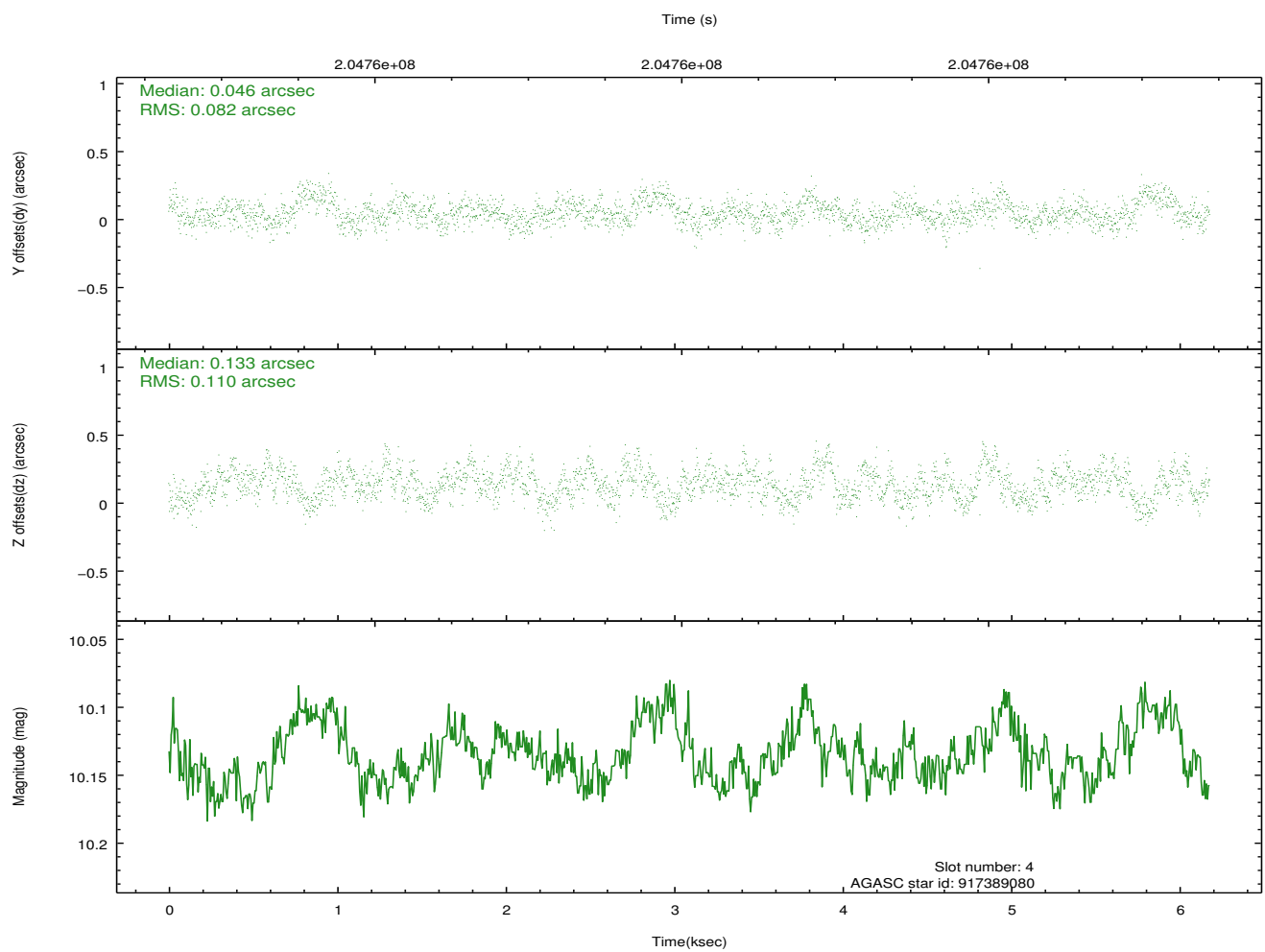
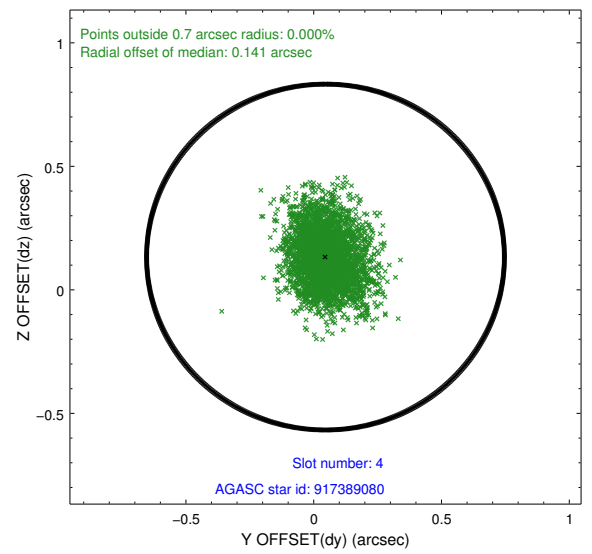
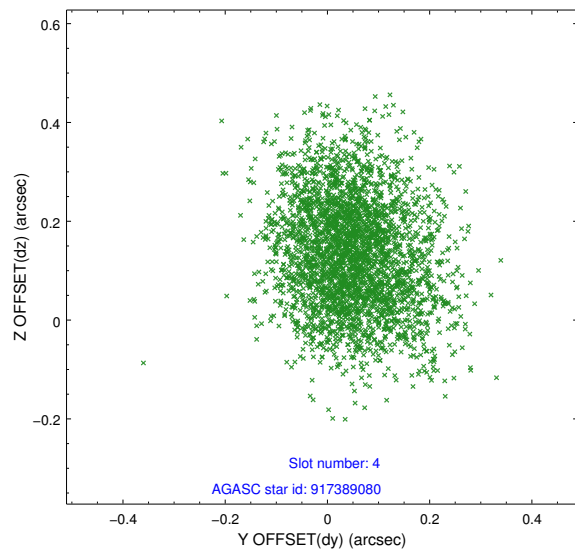
slot	status	id	mag	n_pts	med_dy	med_dz	dr1	dr2	ra	dec	mean_y	mean_z
0	FID	ACIS-S-1	7.19	1507	0.008	-0.011	0.008	0.013	0.000000	0.000000	937.24	-1725.95
1	FID	ACIS-S-4	7.21	1507	0.062	0.008	0.007	0.012	0.000000	0.000000	2155.25	177.24
2	FID	ACIS-S-5	7.23	1508	-0.097	0.015	0.006	0.011	0.000000	0.000000	-1810.49	171.96
3	GUIDE	917386656	7.24	3015	-0.083	0.129	0.056	0.089	15.342124	-33.359890	832.33	-1282.38
4	GUIDE	917389080	10.14	3011	0.046	0.133	0.147	0.240	15.722484	-33.662555	-627.16	-1882.40
5	GUIDE	917389288	9.57	3010	-0.121	0.251	0.113	0.180	15.394706	-33.185862	1340.55	-1681.41
6	GUIDE	917651048	9.67	3014	0.129	-0.176	0.120	0.198	14.655628	-34.424089	-1849.94	2135.68
7	GUIDE	917650528	8.72	3014	0.019	-0.340	0.094	0.157	14.274554	-33.869842	431.14	2385.80

2.4 Star Slots

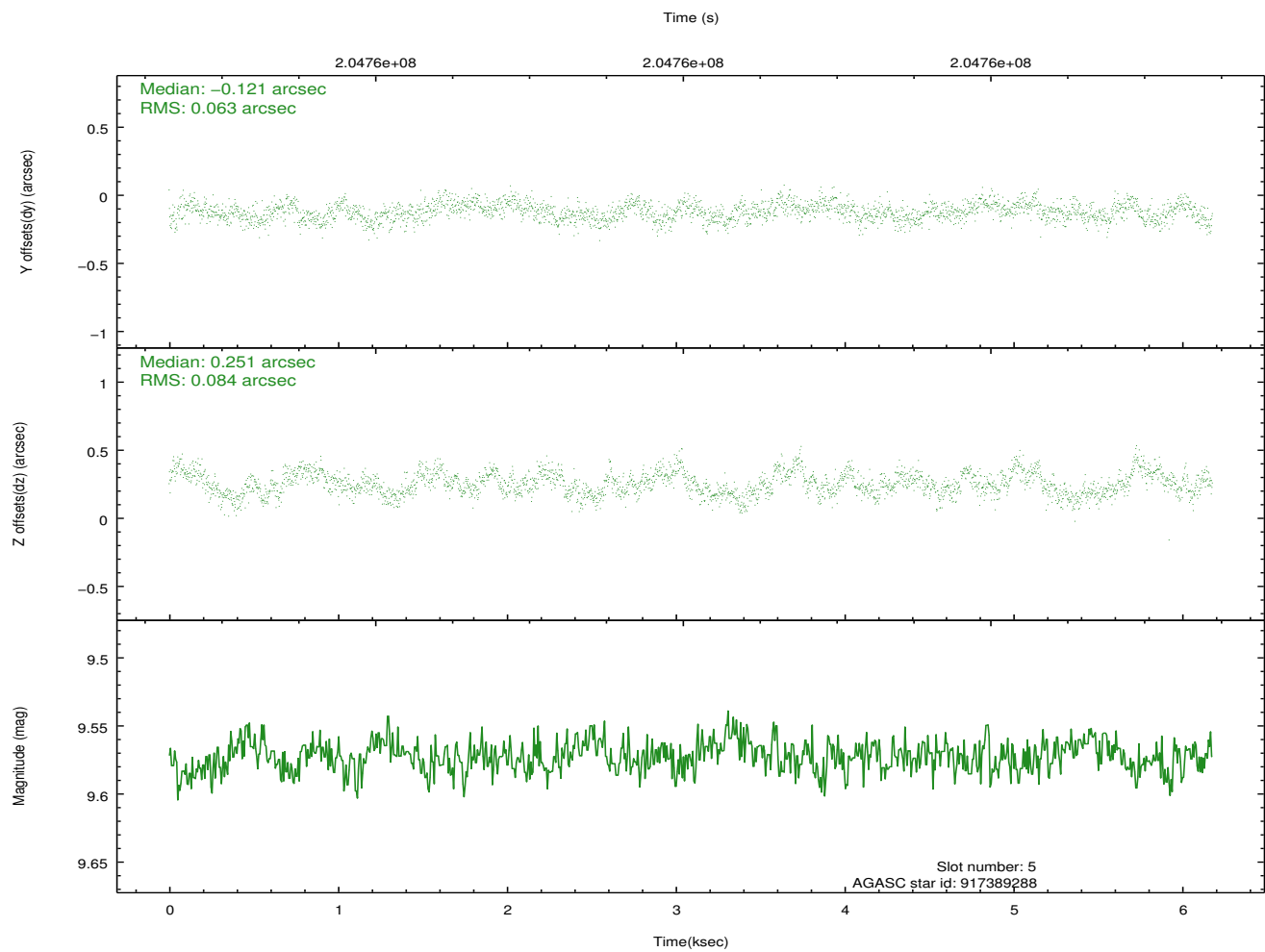
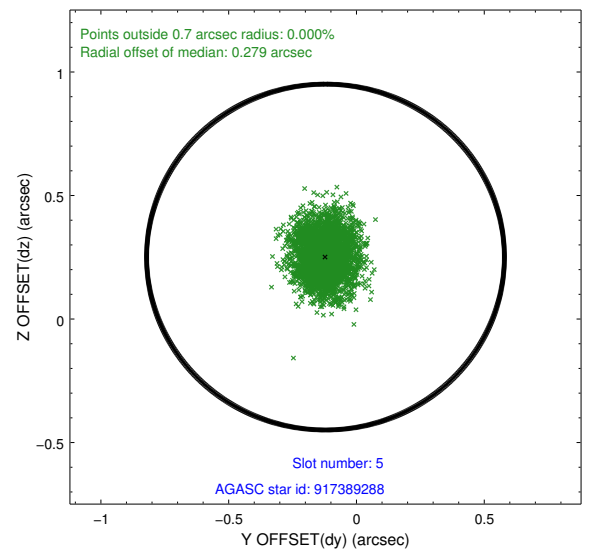
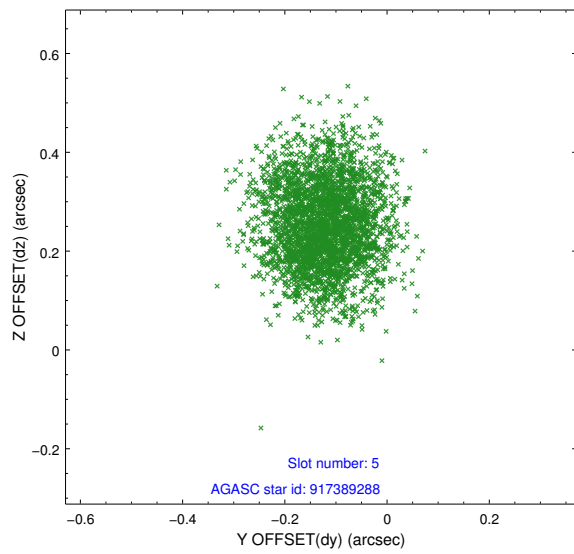
2.4.1 Slot 3



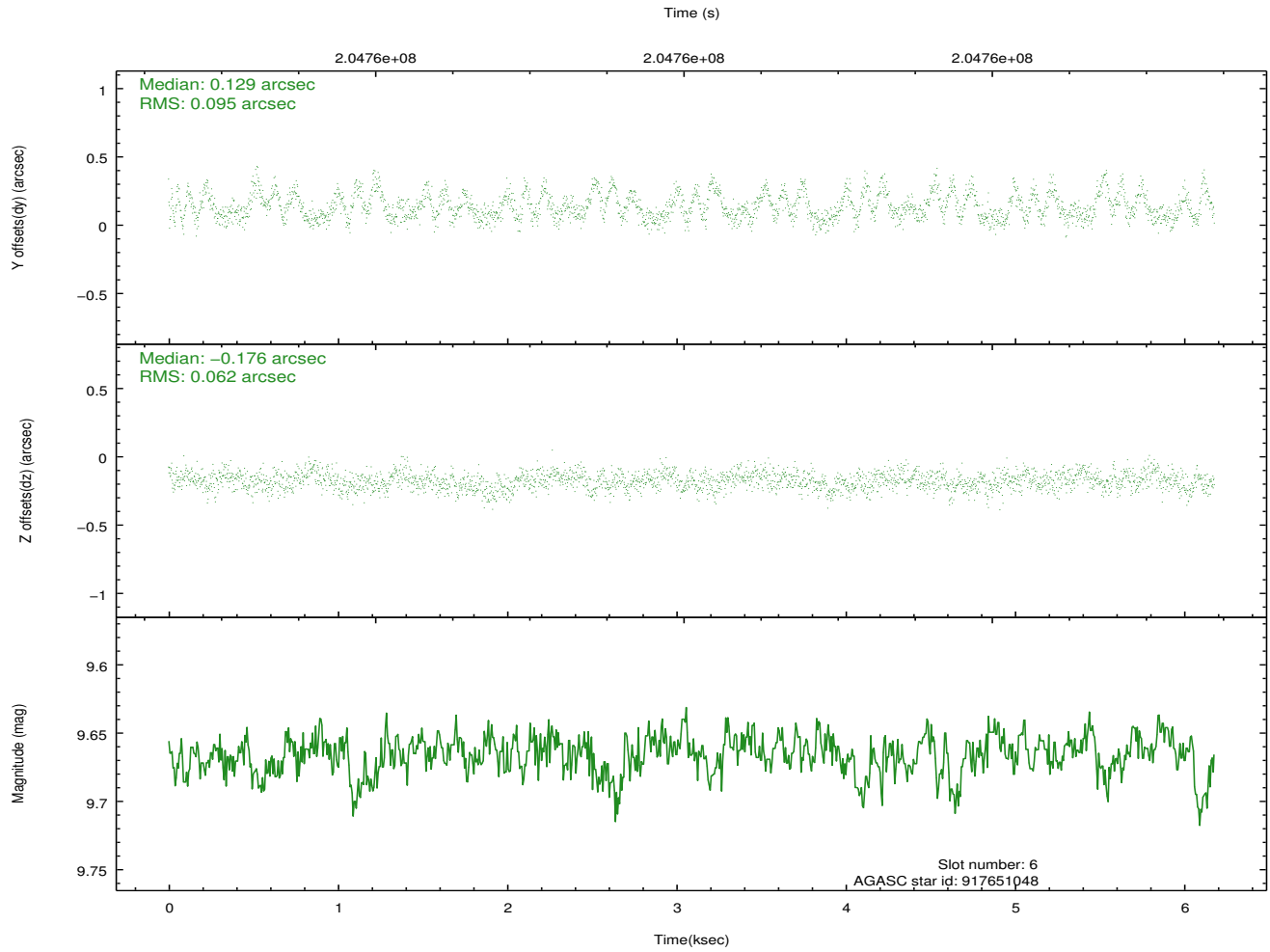
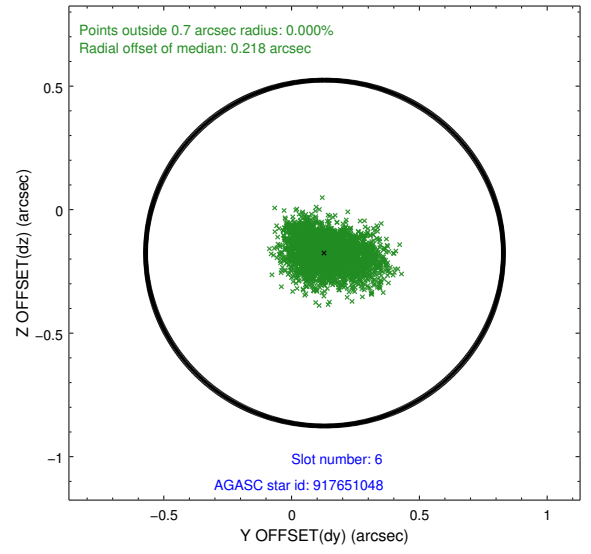
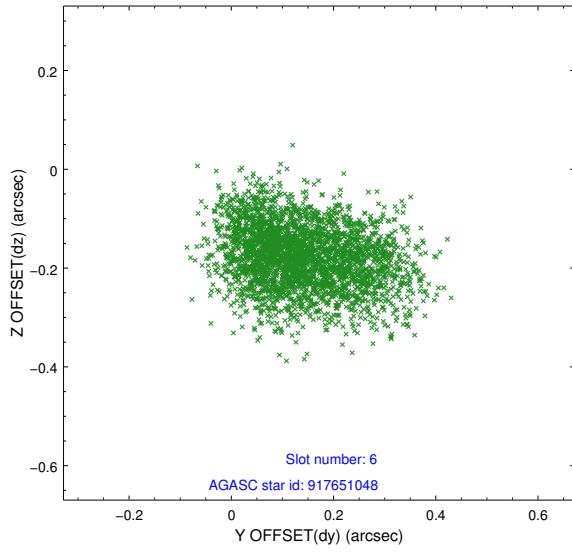
2.4.2 Slot 4



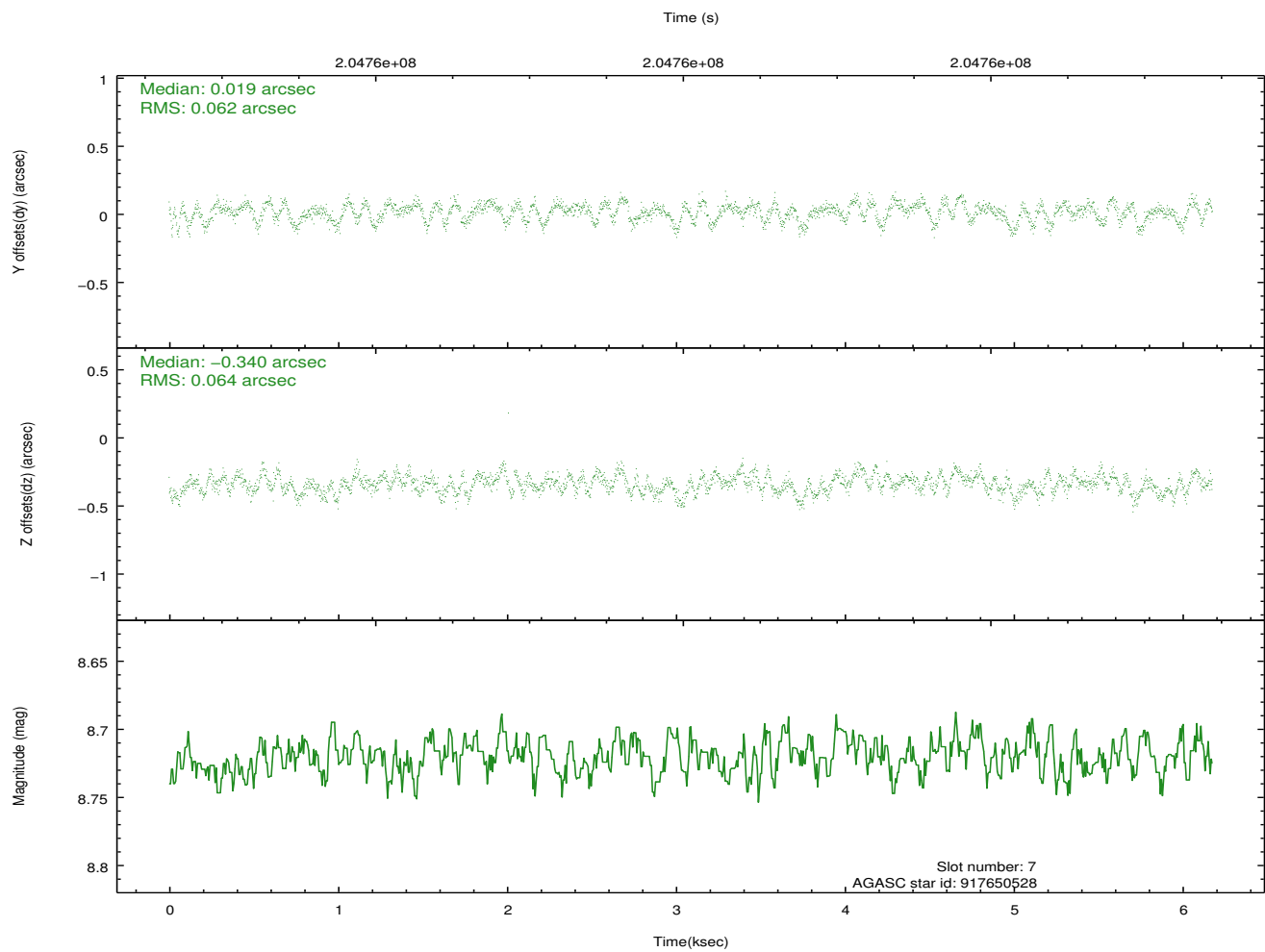
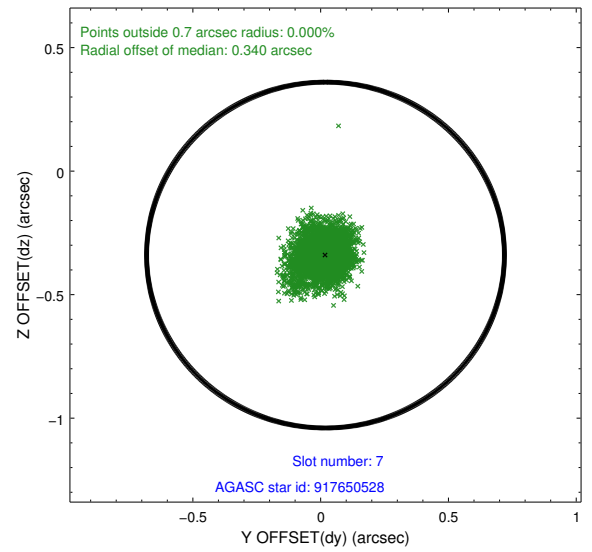
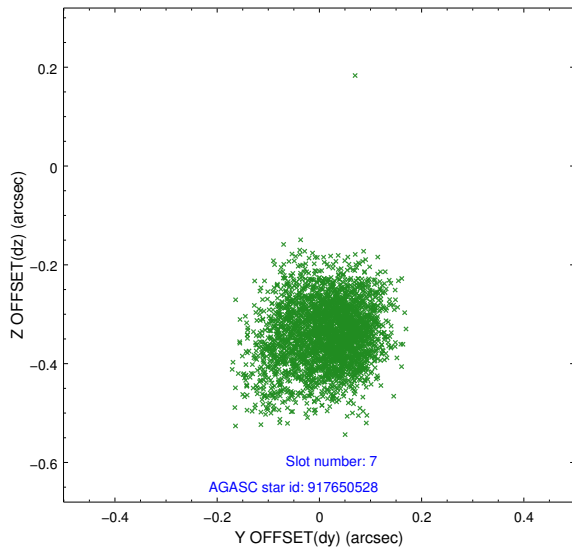
2.4.3 Slot 5



2.4.4 Slot 6

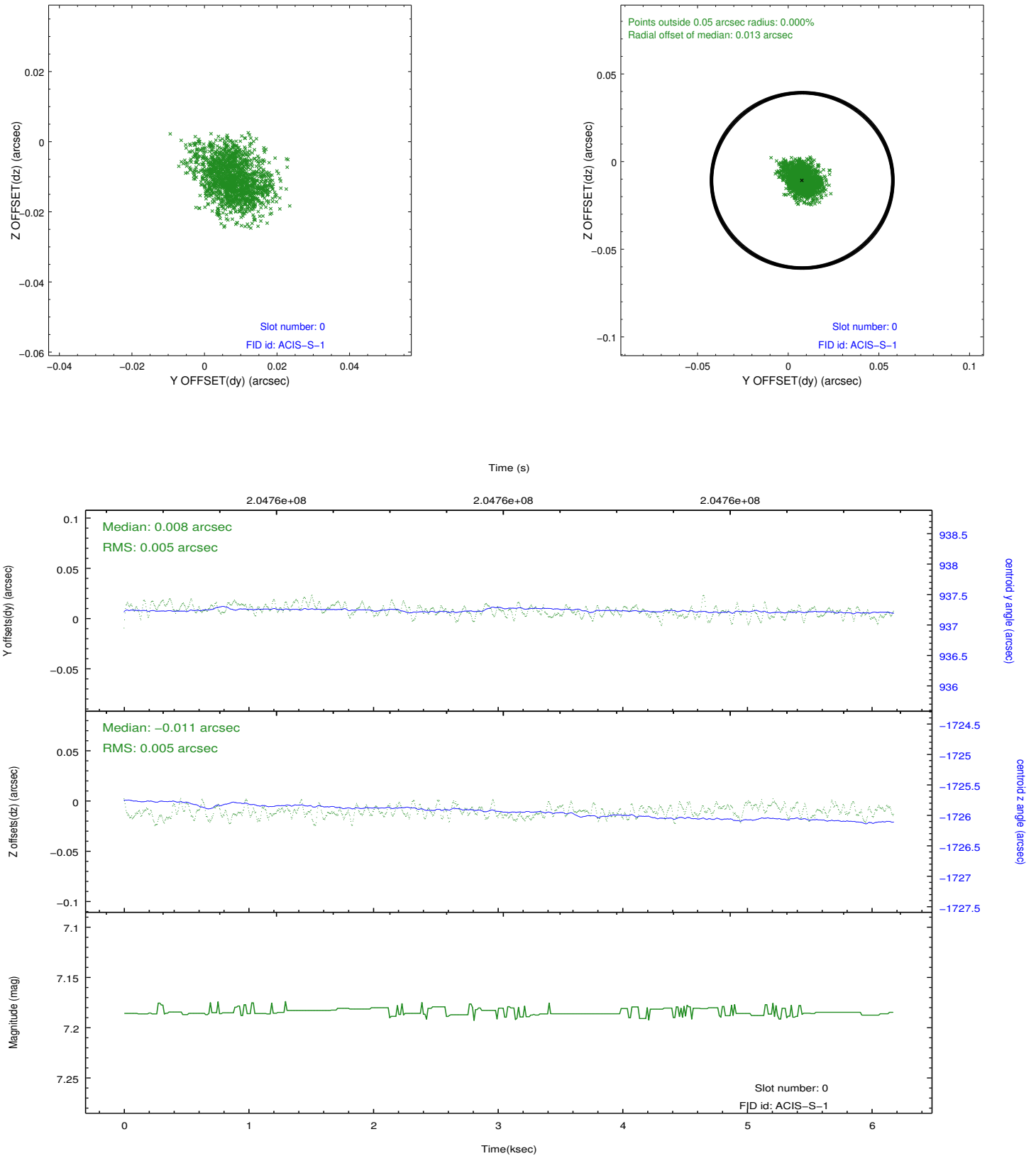


2.4.5 Slot 7

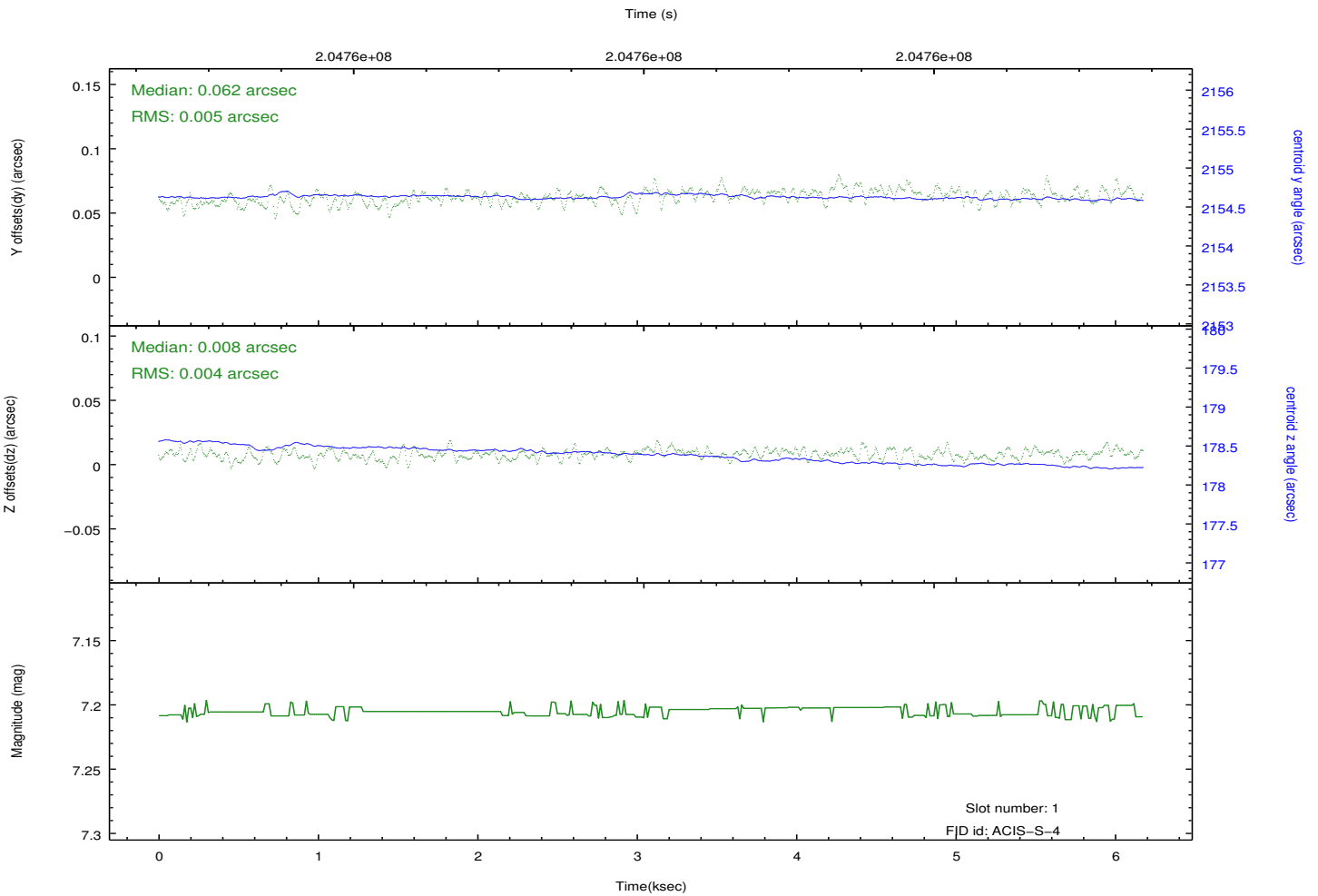
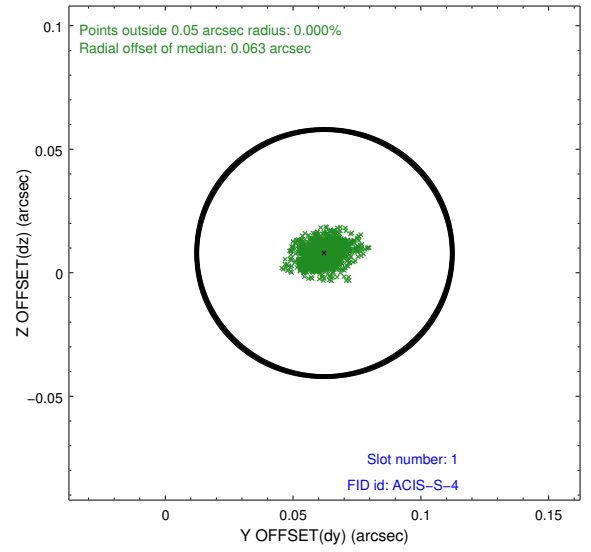
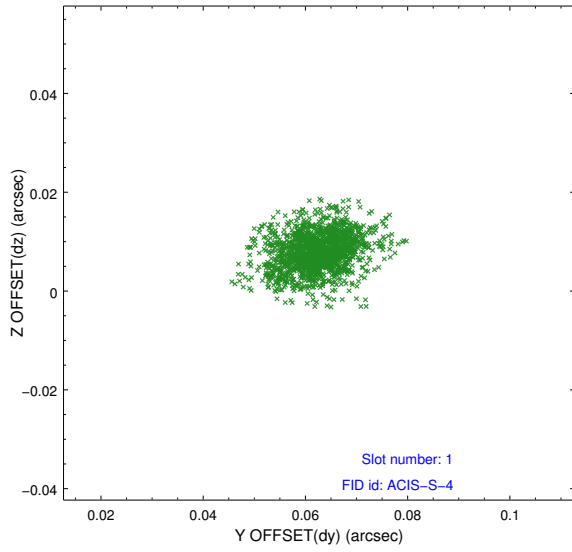


2.5 FID Slots

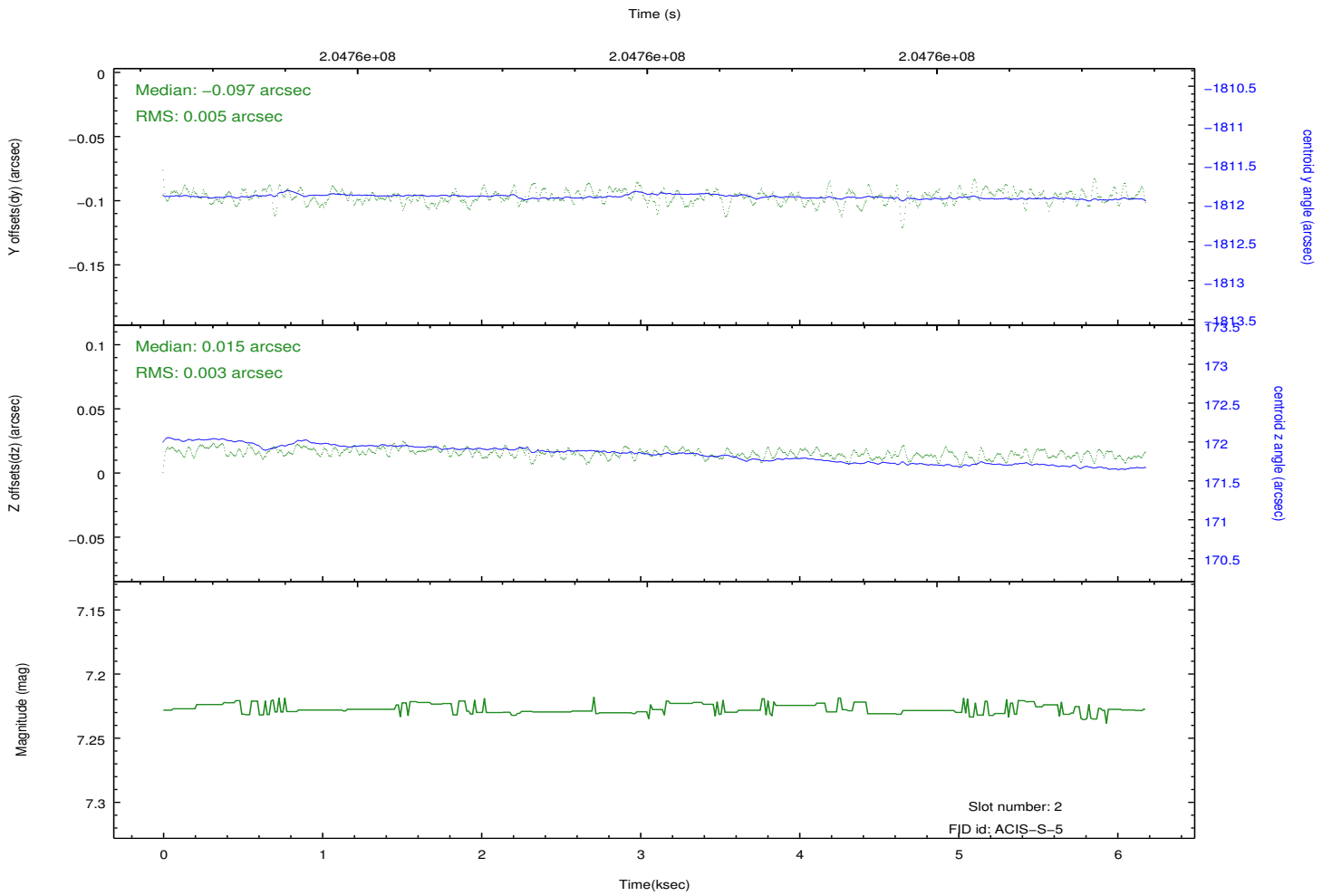
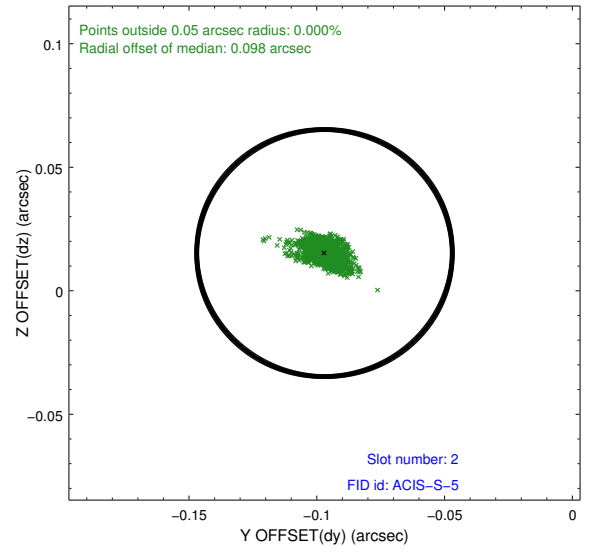
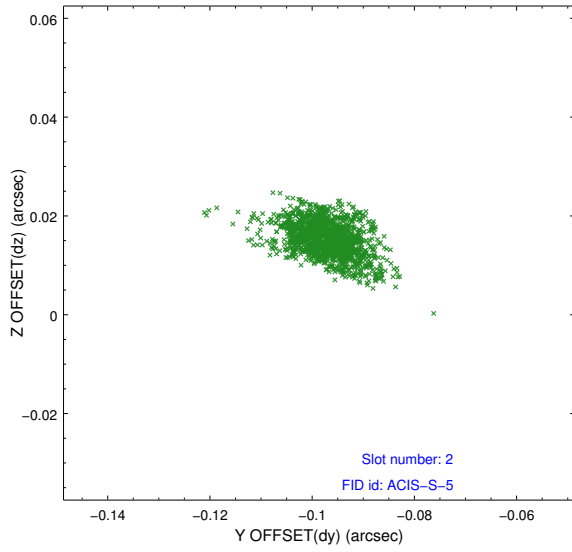
2.5.1 Slot 0



2.5.2 Slot 1



2.5.3 Slot 2



A Summary

A.1 Status

V&V Scientist	Jen Lauer
V&V Date (YYYY-MM-DD)	2012.12.18
V&V Edition	1
V&V Disposition and Status	OK
V&V Charge Time	5.955

A.2 Comments

Joint Proposal: NOAO