

# V&V Reference Report

## L2 ASCDS Version : 8.4.5

Observation 4853 - L2 Version 4  
Chandra X-Ray Center

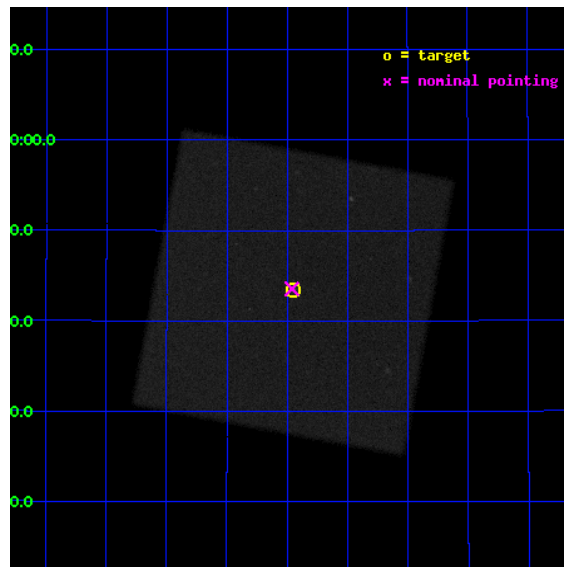
L2 Processing Date : Nov 9 2012

## Contents

<b>1</b>	<b>Front</b>	<b>2</b>
<b>2</b>	<b>OBI</b>	<b>3</b>
2.1	OBI . . . . .	3
2.1.1	Images . . . . .	3
2.1.2	Parameters . . . . .	4
2.1.3	Events . . . . .	4
2.2	Compared Parameters . . . . .	5
2.3	Aspect . . . . .	6
2.4	Star Slots . . . . .	9
2.4.1	Slot 3 . . . . .	9
2.4.2	Slot 4 . . . . .	10
2.4.3	Slot 5 . . . . .	11
2.4.4	Slot 6 . . . . .	12
2.4.5	Slot 7 . . . . .	13
2.5	FID Slots . . . . .	14
2.5.1	Slot 0 . . . . .	14
2.5.2	Slot 1 . . . . .	15
2.5.3	Slot 2 . . . . .	16
<b>A</b>	<b>Summary</b>	<b>17</b>
A.1	Status . . . . .	17
A.2	Comments . . . . .	17

# 1 Front

seq_num	700935	Sequence number
obs_id	4853	Observation id
title	EXTENDED EMISSION AND ACCRETION RATES IN BL LACERTAE OBJECTS	Propo
observer	Dr. Rita Sambruna	Principal investigator
object	1E 1415.6+2557	Source name
ra_targ	214.48625	Observer's specified target RA [deg]
dec_targ	25.723528	Observer's specified target Dec [deg]
ra_nom	214.49011306153	Nominal RA [deg]
dec_nom	25.725841742553	Nominal Dec [deg]
roll_nom	55.536416143522	Nominal Roll [deg]
revision	4	Processing version of data
ontime	20165.082126886	[s]
livetime	20051.572491376	Ontime multiplied by DTCOR
l2events	652964	Number of level 2 events

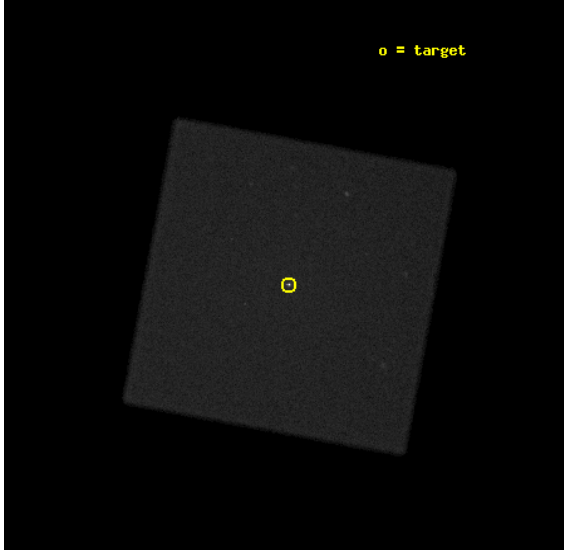


## 2 OBI

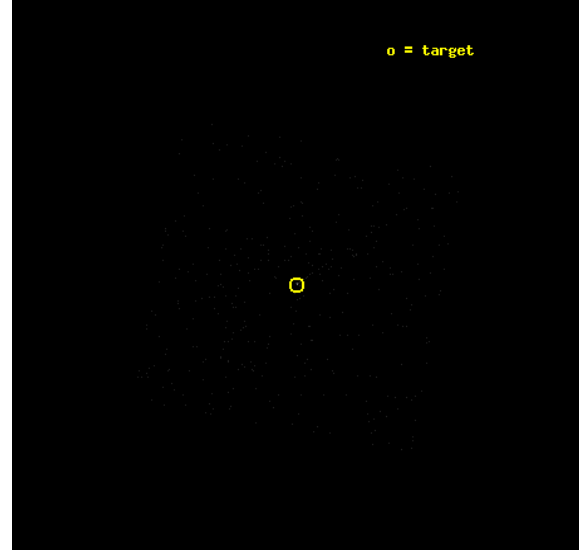
### 2.1 OBI

#### 2.1.1 Images

Level 1 Image



Level 1 Bad Events



### 2.1.2 Parameters

obi_num	1	Obi number	sched_exp_time	20296.060000	[s] Scheduled observation exposure time
ascdsver	8.4.5	Processing system revision	ontime	20165.082126886	[s]
caldbver	4.5.2	&#160	l1events	955862	Number of level 1 events
date	2012-11-09T15:08:49	Date and time of file creation			
revision	4	Processing version of data			

### 2.1.3 Events

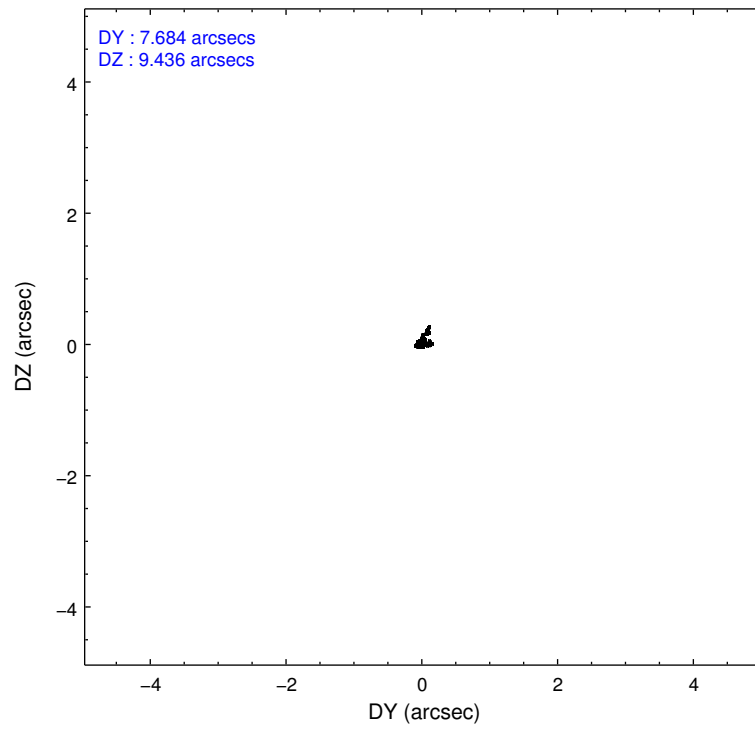
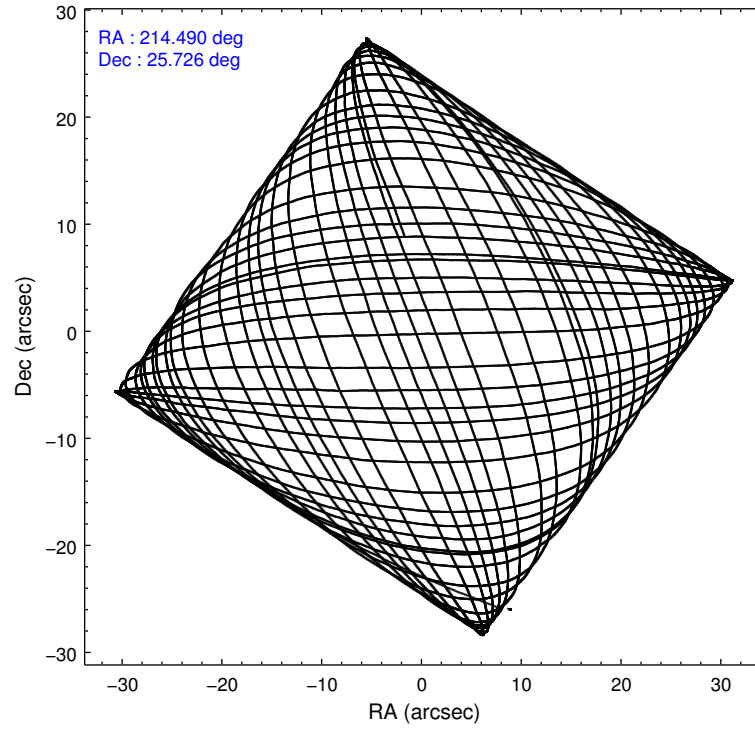
#### Level 1 Events

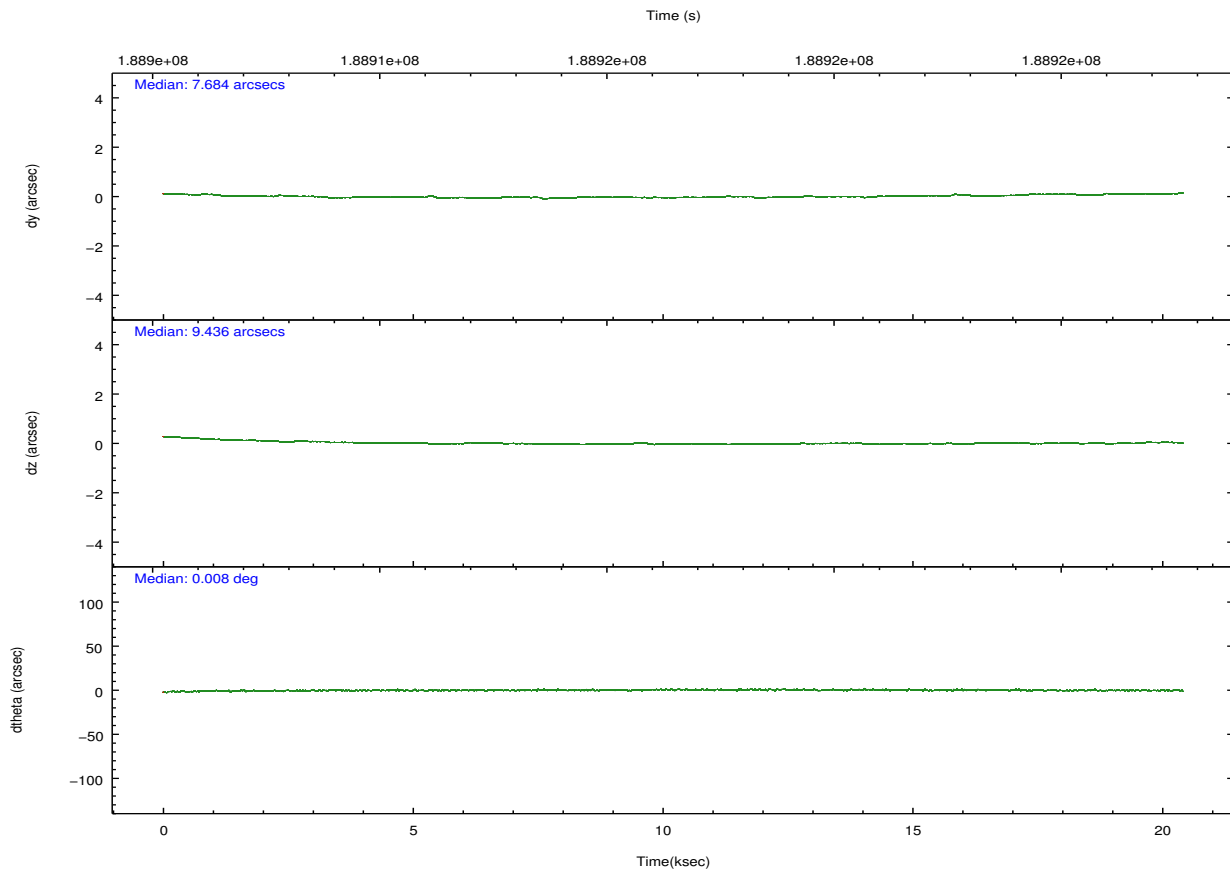
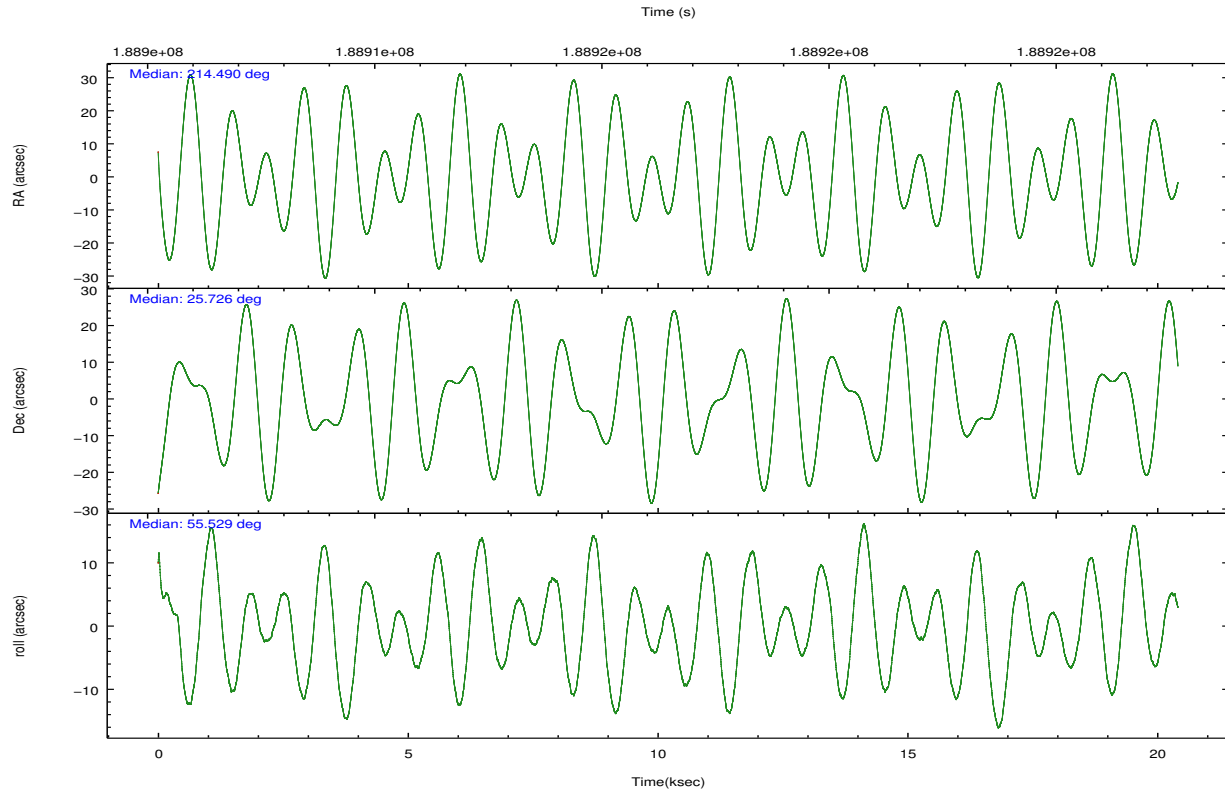
	<b>segment 0</b>
level 1 events	955862
rejected events	18971
rejected %	1%

## 2.2 Compared Parameters

Parameter	Planned	Actual	Parameter	Planned	Actual
Instrument	HRC	HRC	Obspar format version number	7	7
Detector	HRC-I	HRC-I	Obspar file type	PREDICTED	ACTUAL
Grating	NONE	NONE	Obspar update status	NONE	UPDATED
Data mode	OBSERVING	OBSERVING			
Observation mode	POINTING	POINTING			
[deg] Pointing RA	214.488490	214.4901130615287			
[deg] Pointing Dec	25.698731	25.72584174255324			
[deg] Pointing Roll	55.632604	55.53641614352241			
[mm] SIM focus pos	-1.040293	-1.038866356238299			
[mm] SIM defocus	0	0.001426264420575141			
[mm] SIM translation stage pos	126.985494	126.9829799899862			
[mm] SIM translation stage offset	0	0.002508901615314585			
[s] Observation start time (MET)	188906364.184000	188905066.60568			
Observation start date	2003-12-27T09:58:20	2003-12-27T09:37:46			
[s] Observation end time (MET)	188926660.184000	188926974.44413			
Observation end date	2003-12-27T15:36:36	2003-12-27T15:42:54			

## 2.3 Aspect



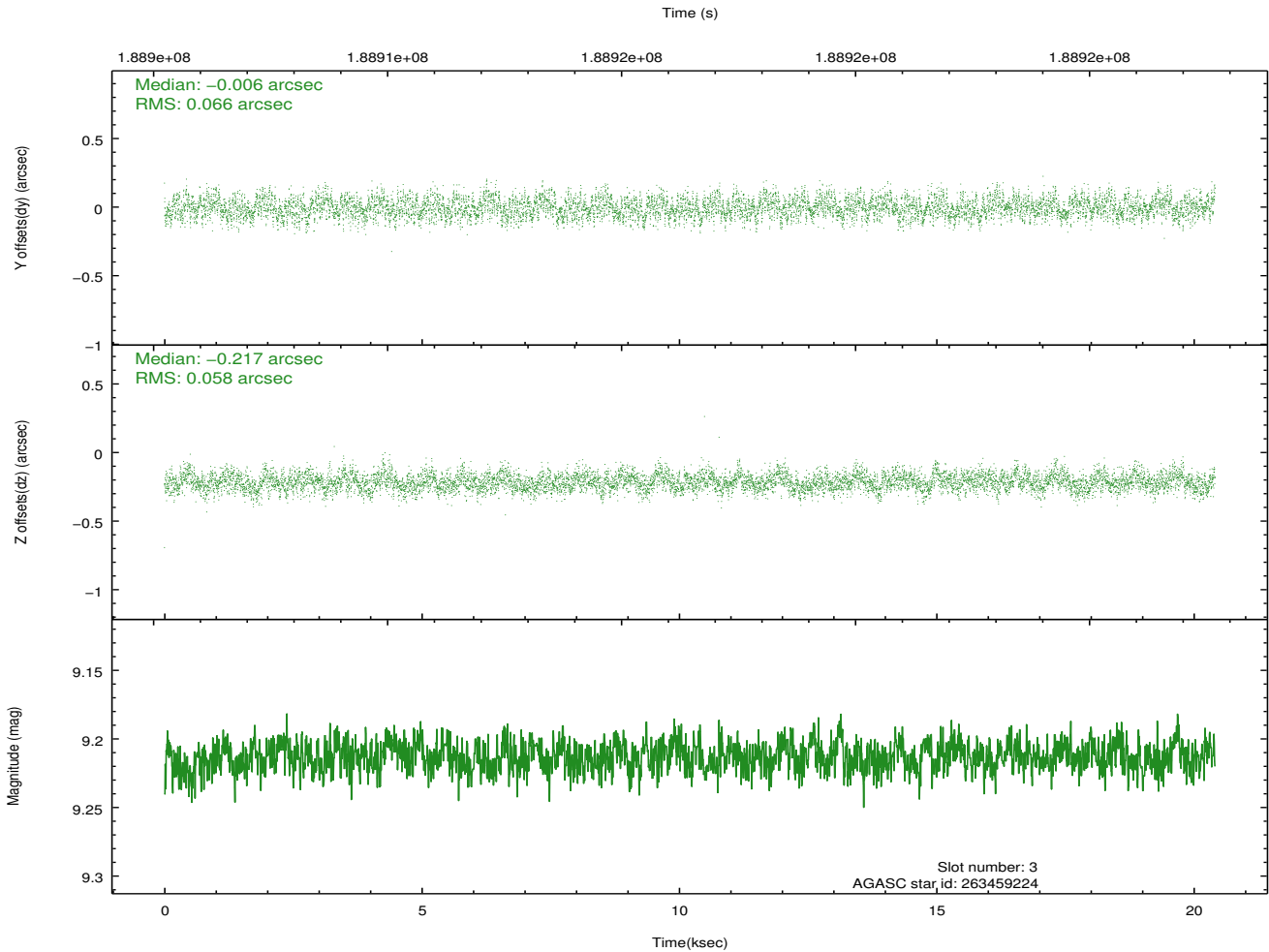
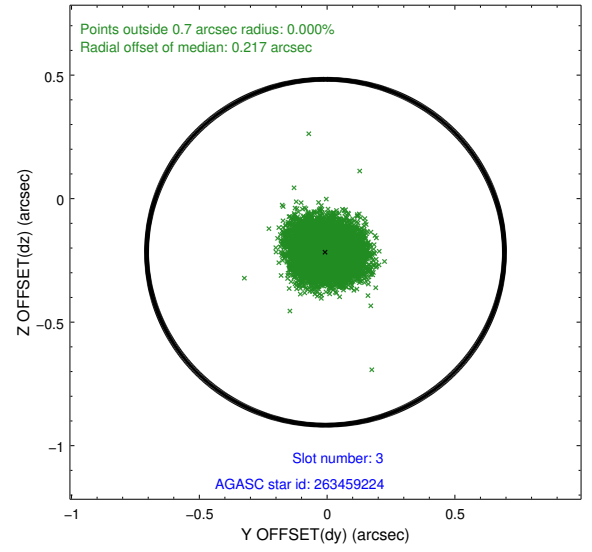
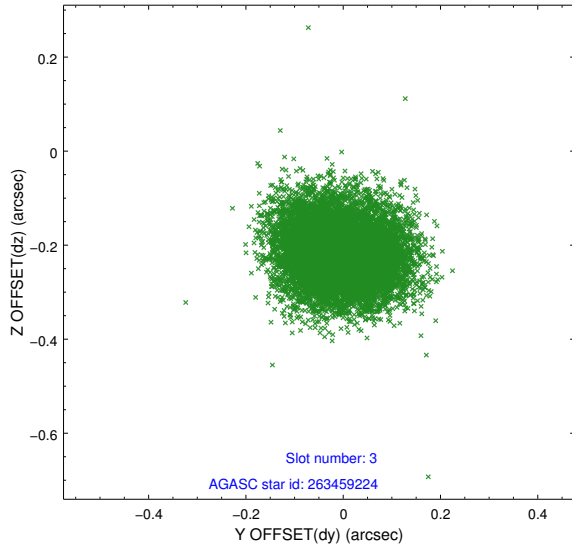


### Slot Statistics

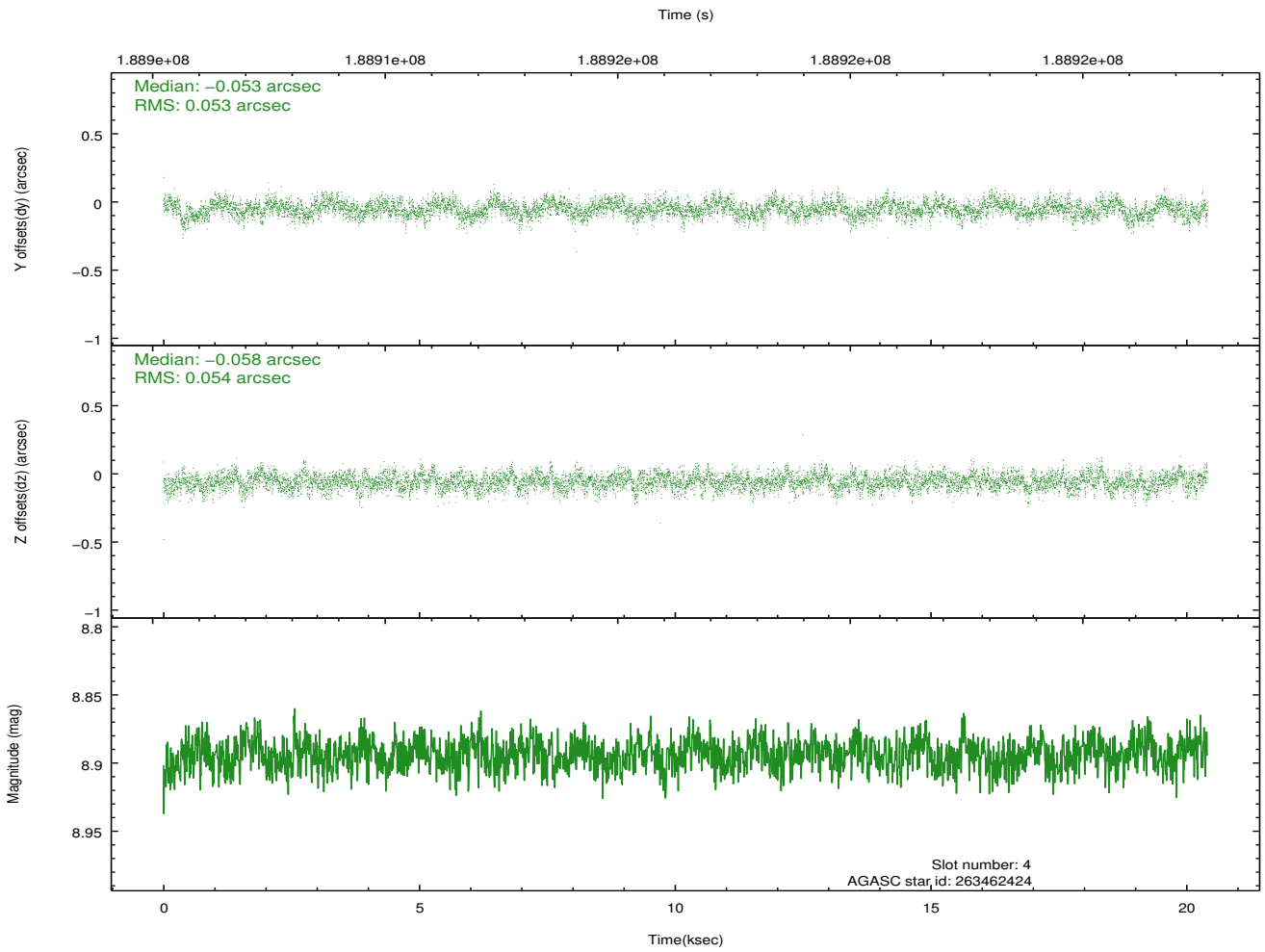
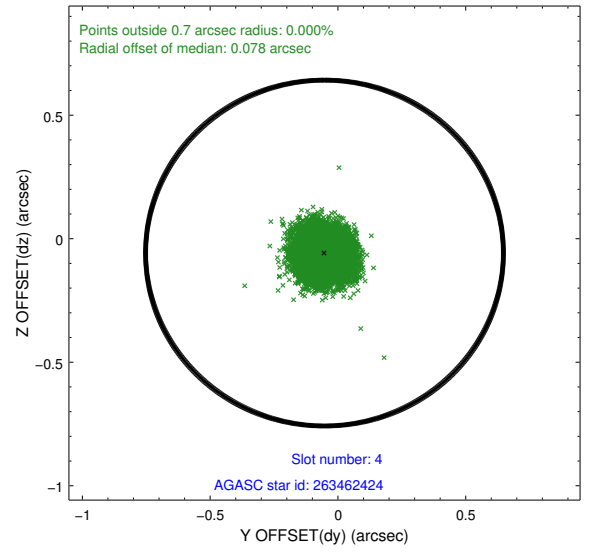
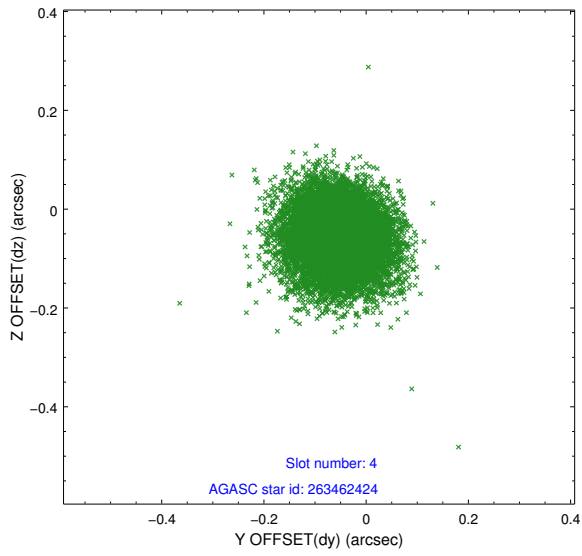
slot	status	id	mag	n_pts	med_dy	med_dz	dr1	dr2	ra	dec	mean_y	mean_z
0	FID	HRC-I-2	7.03	4976	0.055	-0.041	0.006	0.010	0.000000	0.000000	849.39	-1298.98
1	FID	HRC-I-3	7.08	4977	-0.035	-0.013	0.006	0.011	0.000000	0.000000	-1191.65	1006.91
2	FID	HRC-I-4	7.02	4978	0.099	-0.033	0.006	0.010	0.000000	0.000000	1279.35	1004.97
3	GUIDE	263459224	9.21	9951	-0.006	-0.217	0.094	0.150	214.219599	26.365853	1493.48	2071.89
4	GUIDE	263462424	8.89	9950	-0.053	-0.058	0.080	0.129	214.158904	25.947326	137.70	1386.62
5	GUIDE	263464688	9.20	9949	0.176	0.099	0.094	0.152	214.654702	25.305283	-862.98	-1245.93
6	GUIDE	263591976	8.61	9956	-0.128	0.070	0.076	0.118	215.004076	25.990362	1811.24	-782.66
7	GUIDE	263595296	9.80	9923	0.010	0.104	0.118	0.195	214.929889	25.645337	652.53	-1289.75

## 2.4 Star Slots

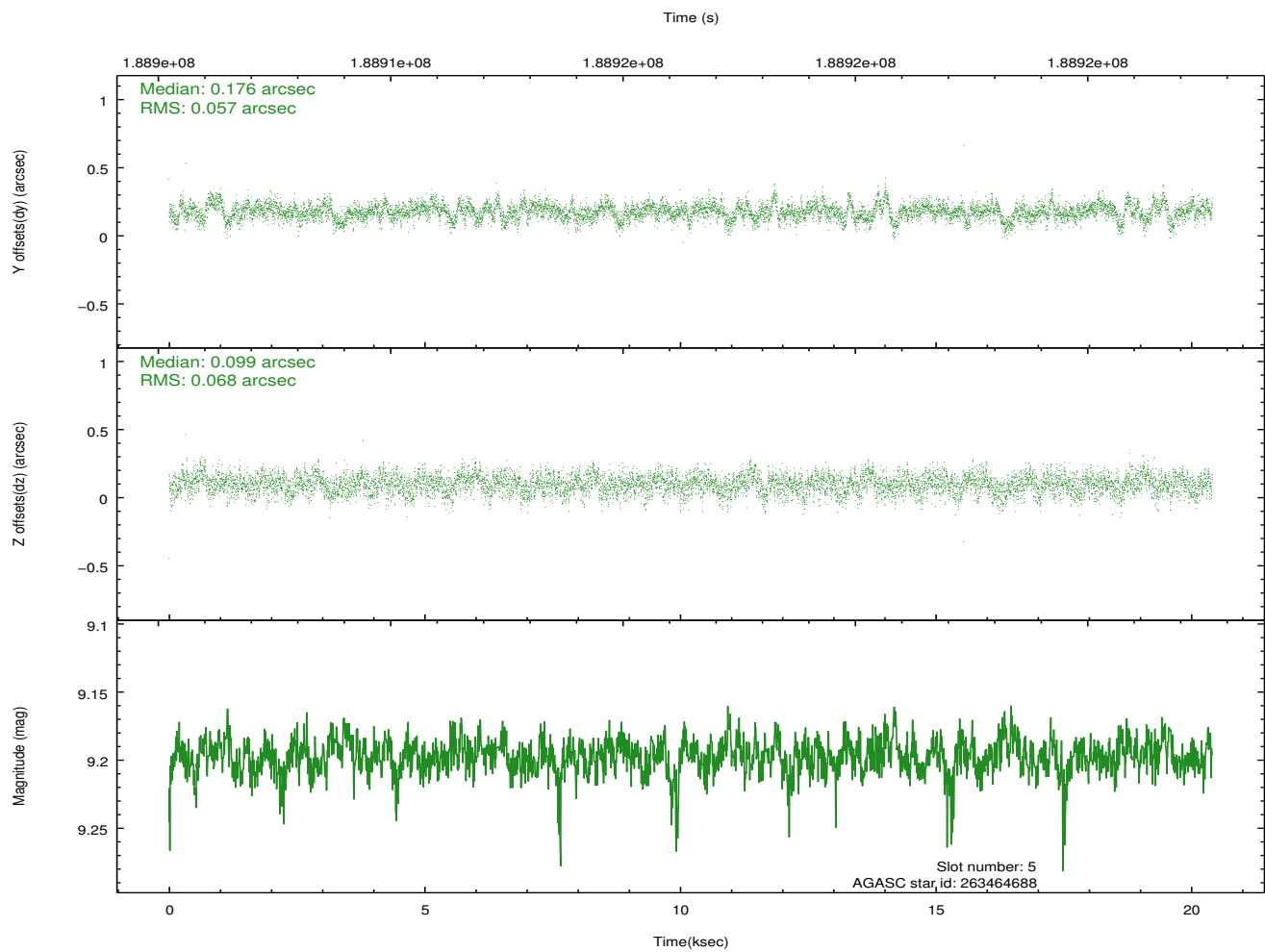
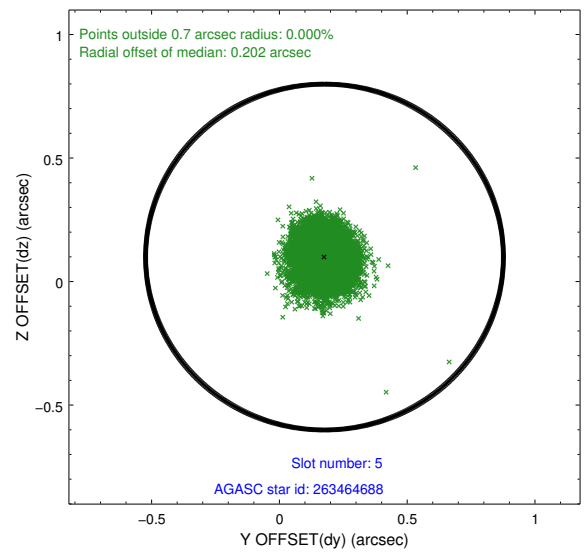
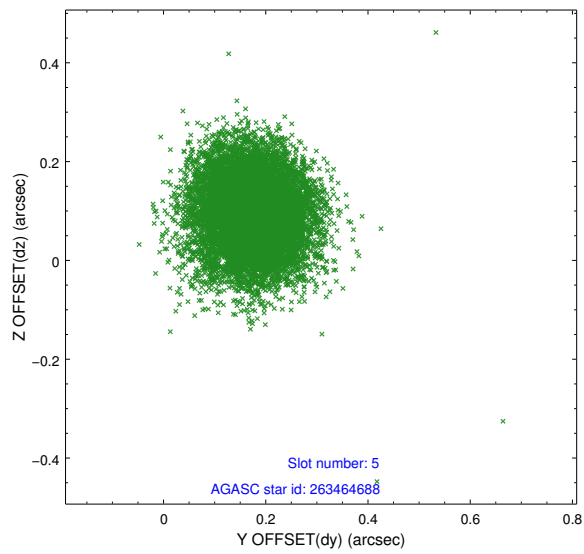
### 2.4.1 Slot 3



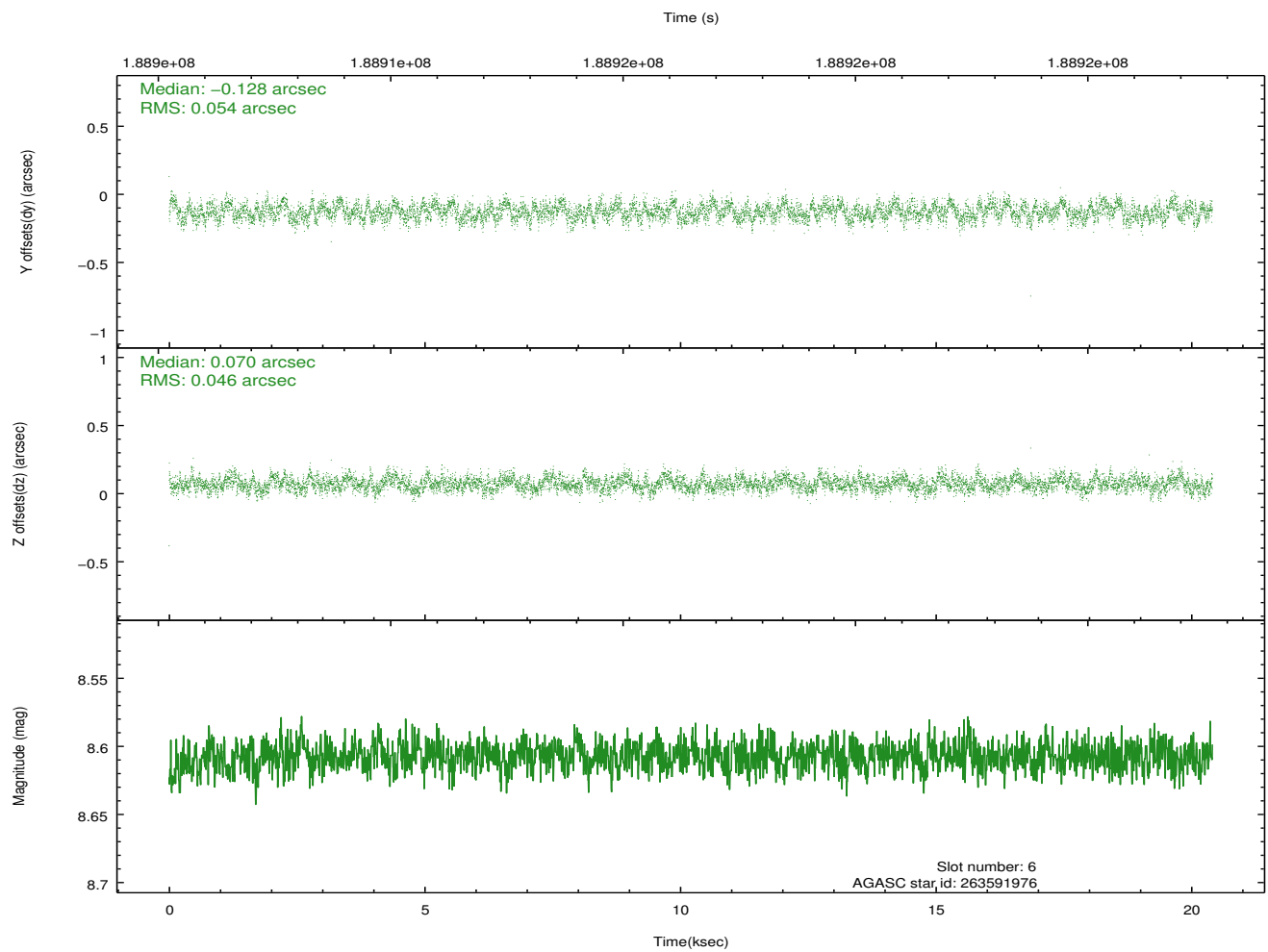
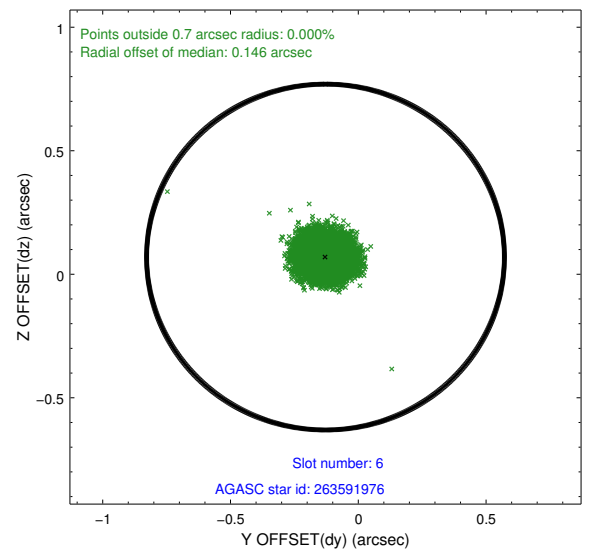
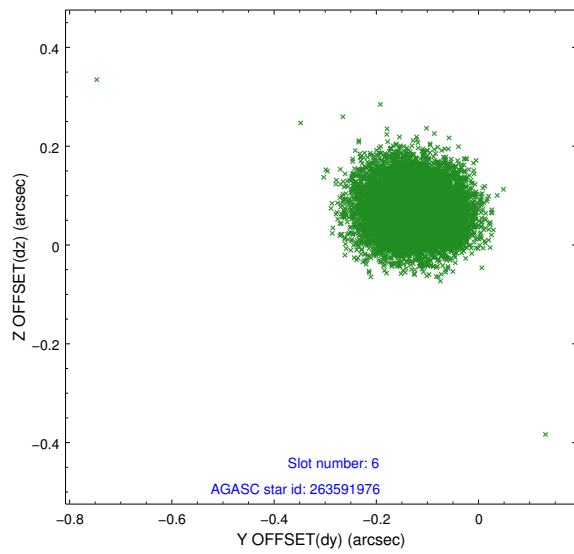
## 2.4.2 Slot 4



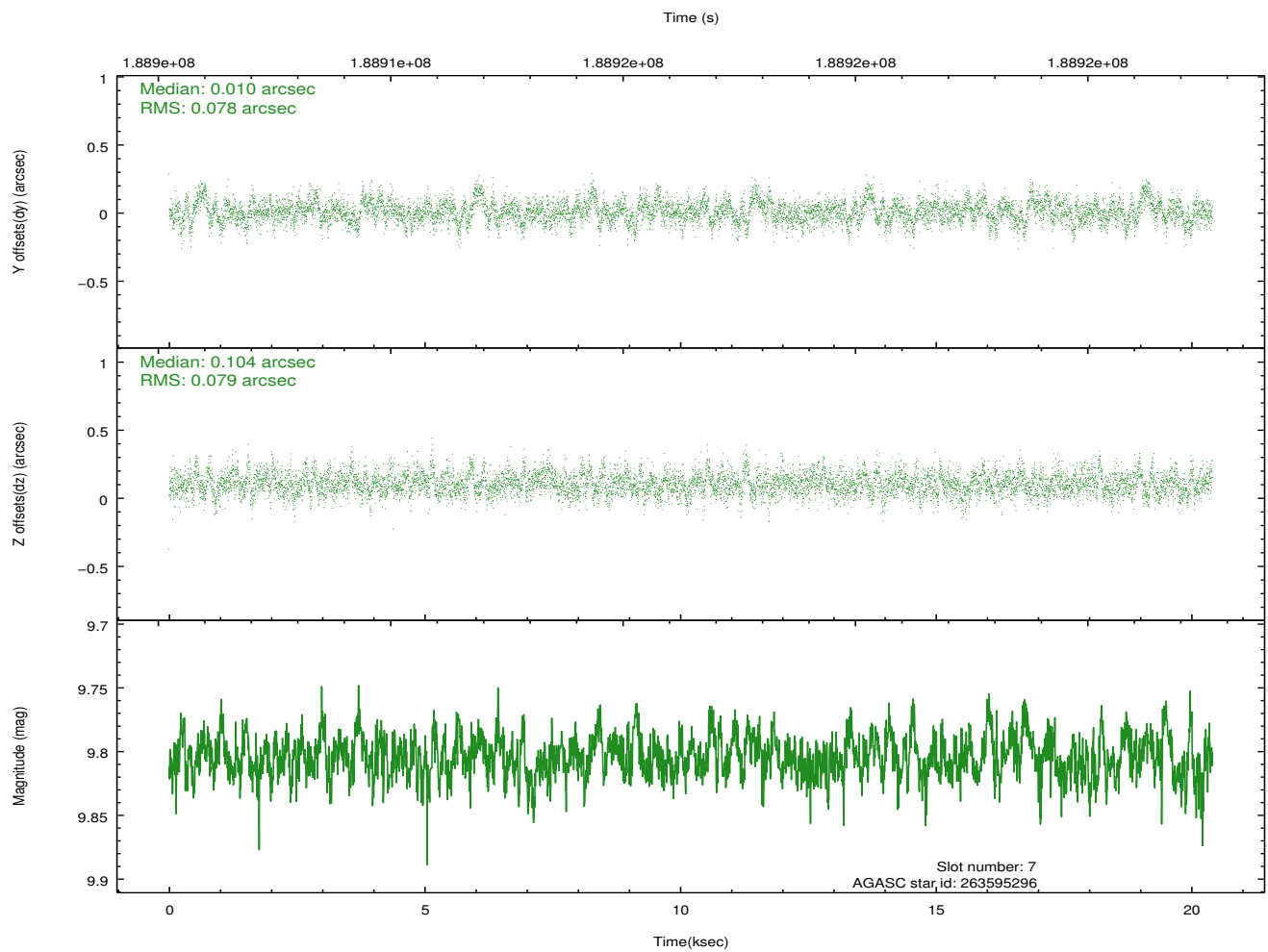
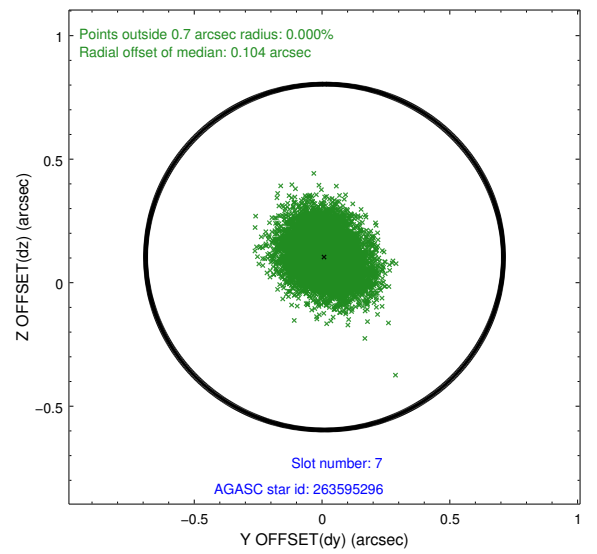
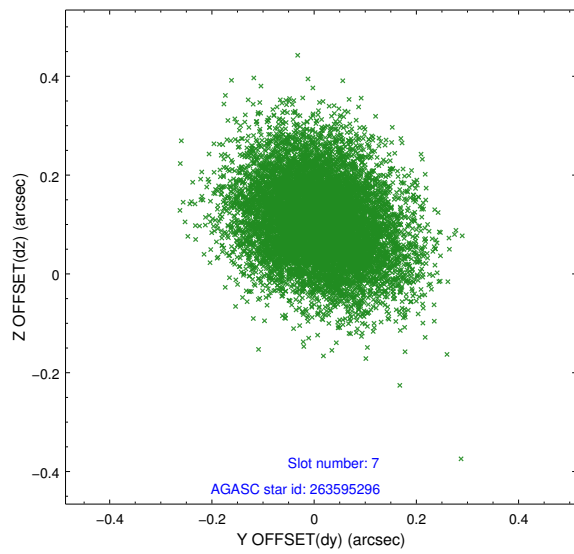
### 2.4.3 Slot 5



## 2.4.4 Slot 6

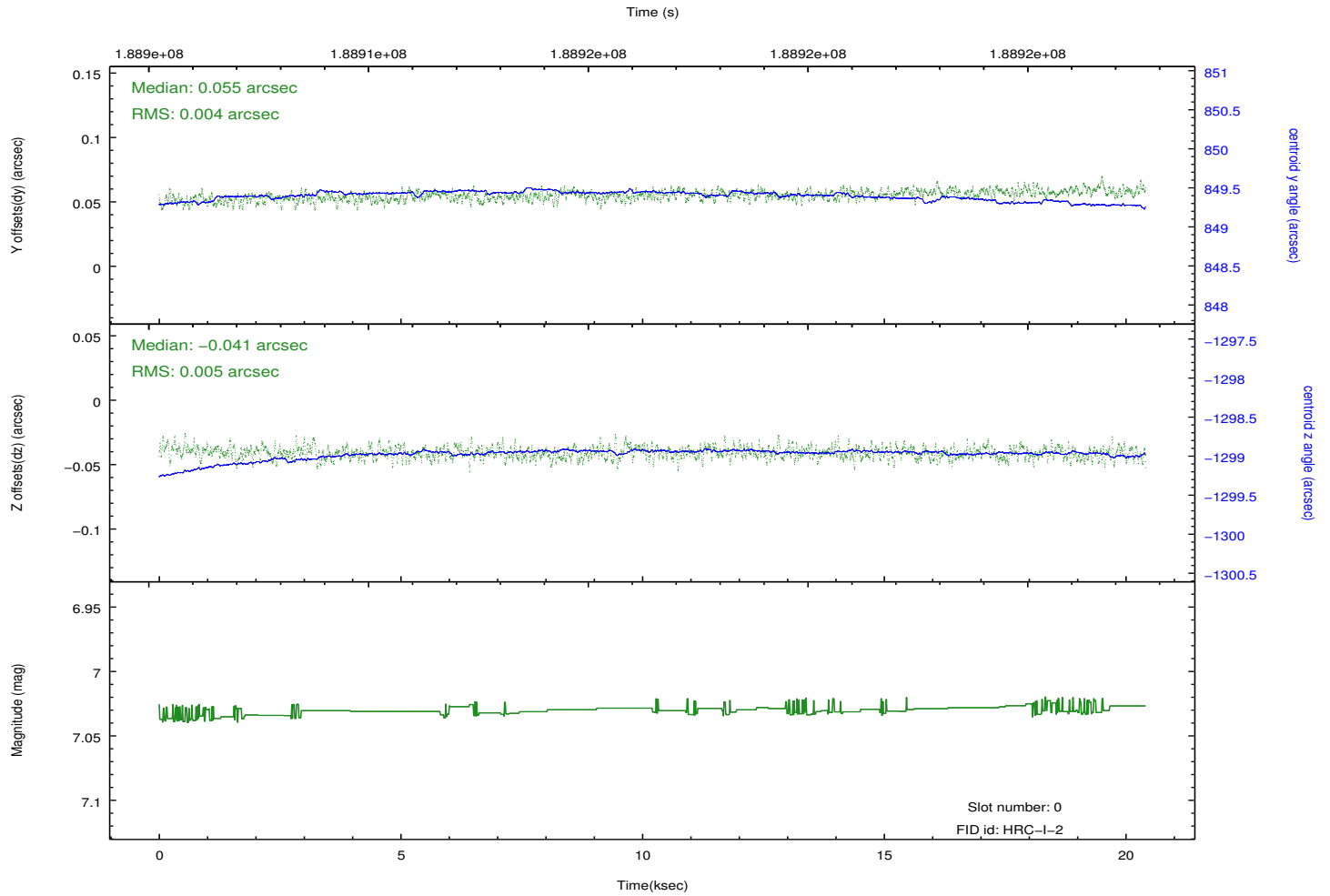
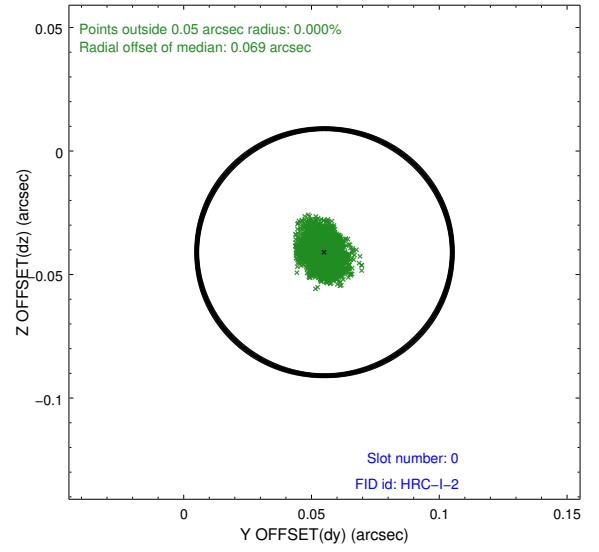
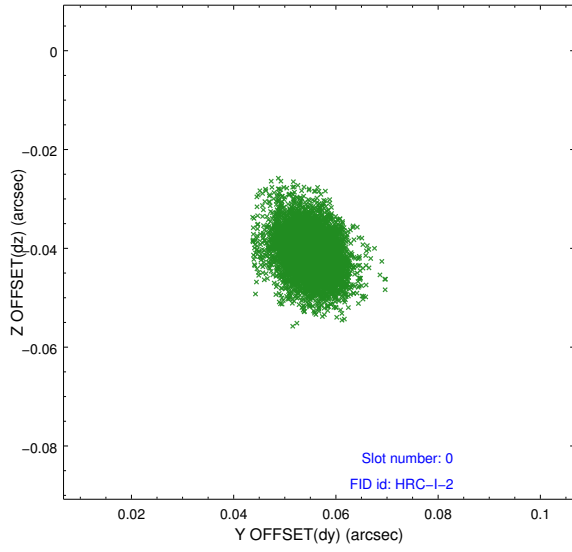


### 2.4.5 Slot 7

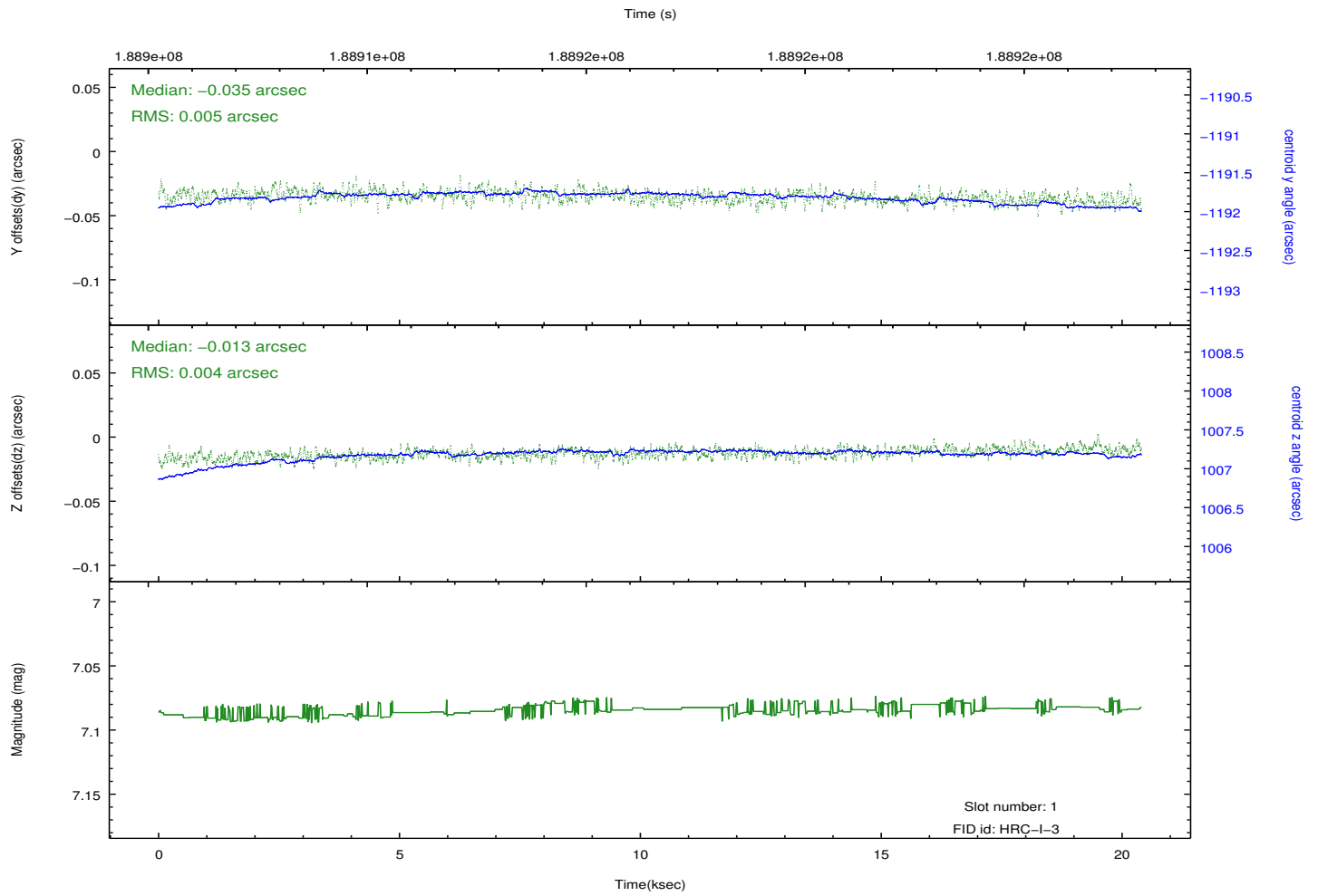
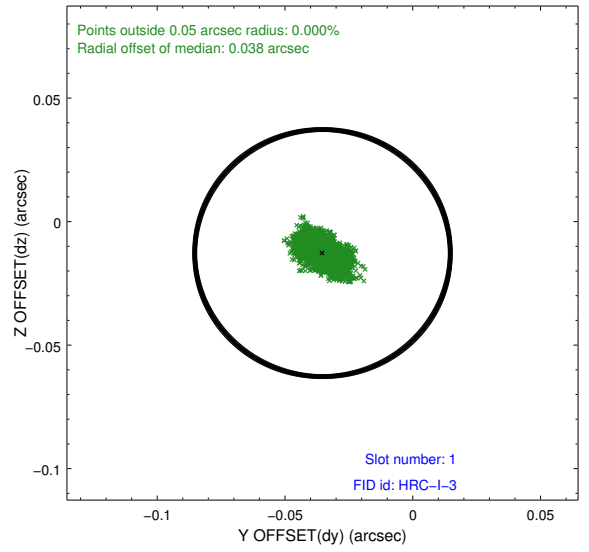
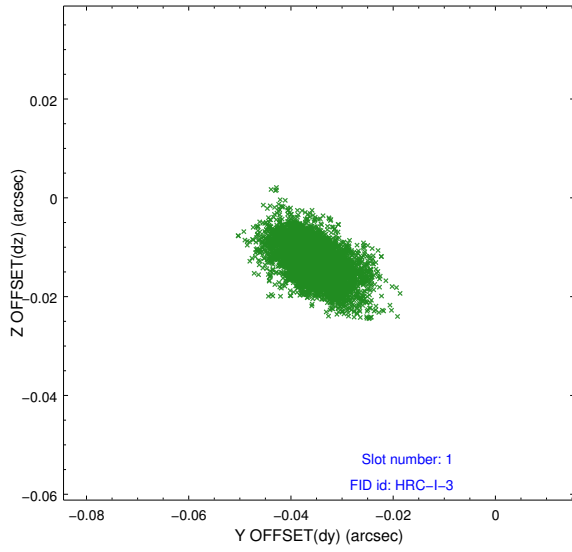


## 2.5 FID Slots

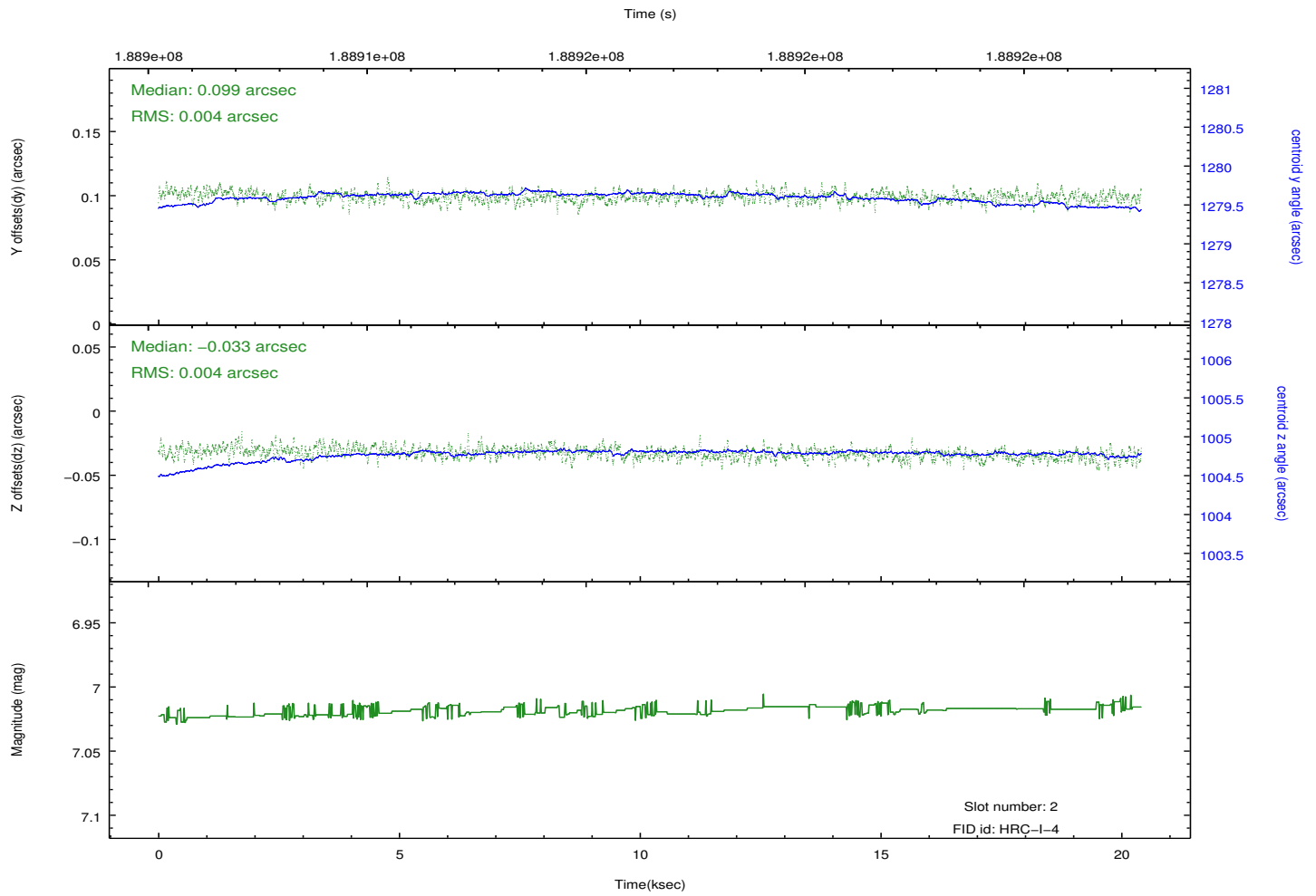
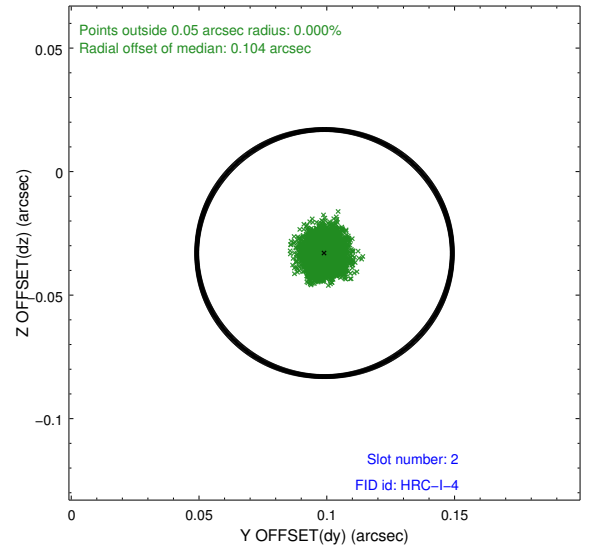
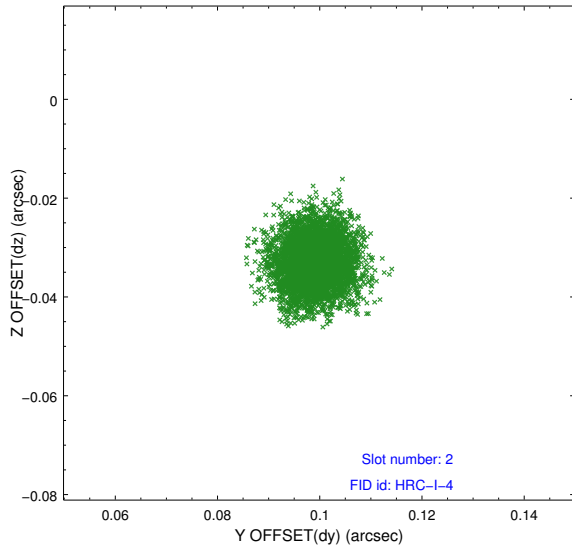
### 2.5.1 Slot 0



## 2.5.2 Slot 1



### 2.5.3 Slot 2



# A Summary

## A.1 Status

V&V Scientist	Jen Lauer
V&V Date (YYYY-MM-DD)	2012.12.03
V&V Edition	1
V&V Disposition and Status	OK
V&V Charge Time	20.167

## A.2 Comments

On day 356 at about 00:30, the OBA heater stuck in the 'on' position. This situation affected obsid 4901 and all subsequent observations to this point. The result of this anomaly could be a displacement of the target on the chip in the z direction. The displacement will be small because everything is still within spec, but the target may be spatially displaced, have a different point spread function, or trail across the chip.