

V&V Reference Report

L2 ASCDS Version : 8.4.5

Observation 4943 - L2 Version 5
Chandra X-Ray Center

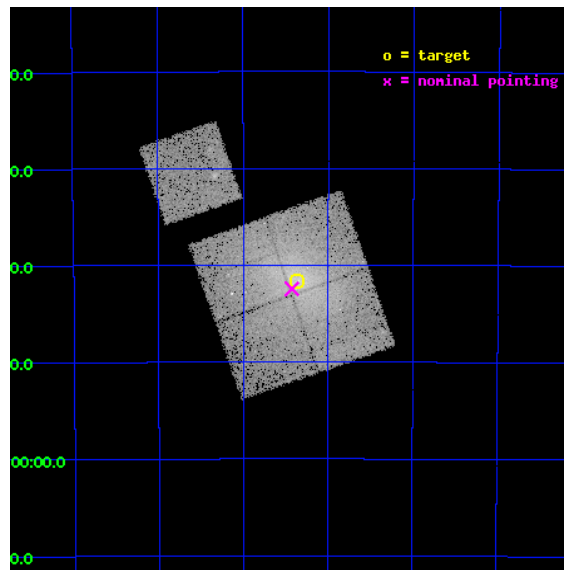
L2 Processing Date : Jan 23 2013

Contents

1	Front	2
2	OBI	3
2.1	OBI	3
2.1.1	Images	3
2.1.2	Bias	3
2.1.3	Parameters	4
2.1.4	Events	4
2.2	Compared Parameters	5
2.3	Aspect	6
2.4	Star Slots	9
2.4.1	Slot 3	9
2.4.2	Slot 4	10
2.4.3	Slot 5	11
2.4.4	Slot 6	12
2.4.5	Slot 7	13
2.5	FID Slots	14
2.5.1	Slot 0	14
2.5.2	Slot 1	15
A	Summary	16
A.1	Status	16
A.2	Comments	16

1 Front

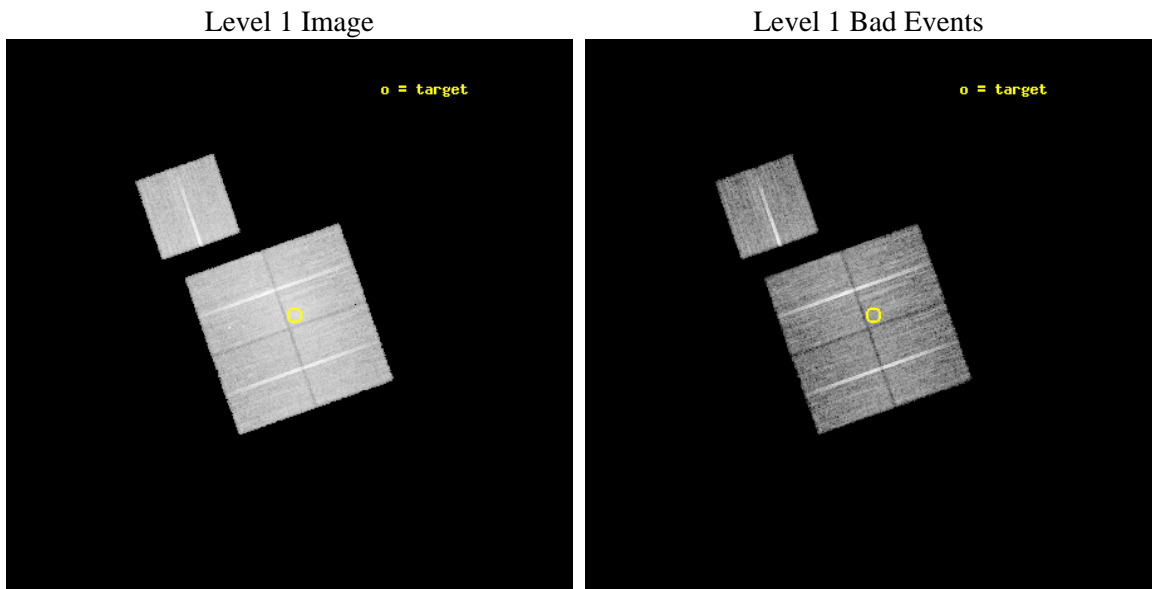
seq_num	800394	Sequence number
obs_id	4943	Observation id
title	THE HIFLUGCS CLUSTER SURVEY: A CORNERSTONE FOR COSMOLOGY	Proposal
observer	Dr. Thomas Reiprich	Principal investigator
object	A3391	Source name
dtcycle	0	
cycle	P	events from which exps? Prim/Second/Both
ra_targ	96.5925	Observer's specified target RA [deg]
dec_targ	-53.69375	Observer's specified target Dec [deg]
ra_nom	96.606872738796	Nominal RA [deg]
dec_nom	-53.707478833252	Nominal Dec [deg]
roll_nom	340.69728953791	Nominal Roll [deg]
revision	5	Processing version of data
ontime	18692.999964029	Sum of GTIs [s]
livetime	18448.762157912	Livetime [s]
ontime0	18692.999964029	Sum of GTIs [s]
ontime1	18692.999964029	Sum of GTIs [s]
ontime2	18689.858973891	Sum of GTIs [s]
ontime3	18692.999964029	Sum of GTIs [s]
ontime6	18692.999964029	Sum of GTIs [s]
l2events	92492	Number of level 2 events



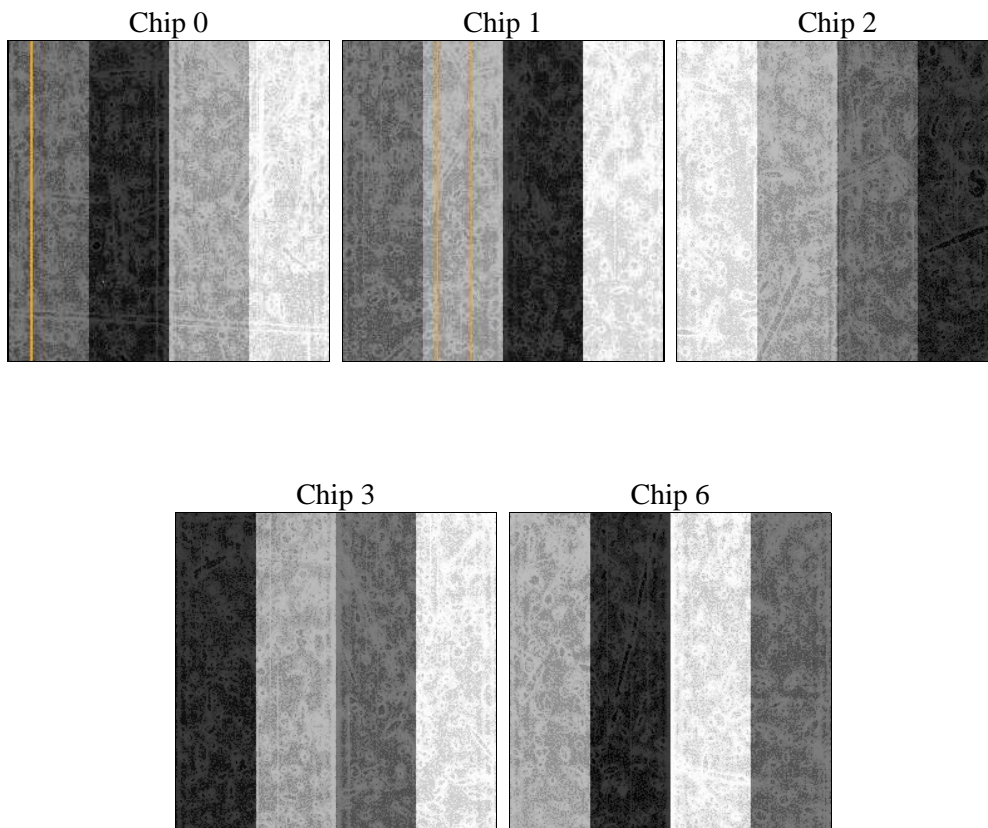
2 OBI

2.1 OBI

2.1.1 Images



2.1.2 Bias



2.1.3 Parameters

obi_num	1	Obi number	sched_exp_time	18545.000000	[s] Scheduled observation exposure time
ascdsver	8.5.1.1	Processing system revision	ontime	18692.999964029	Sum of GTIs [s]
caldbver	4.5.5	 	ontime0	18692.999964029	Sum of GTIs [s]
date	2013-01-23T22:12:26	Date and time of file creation	ontime1	18692.999964029	Sum of GTIs [s]
revision	5	Processing version of data	ontime2	18689.858973891	Sum of GTIs [s]
			ontime3	18692.999964029	Sum of GTIs [s]
			ontime6	18692.999964029	Sum of GTIs [s]
			l1events	534566	Number of level 1 events

2.1.4 Events

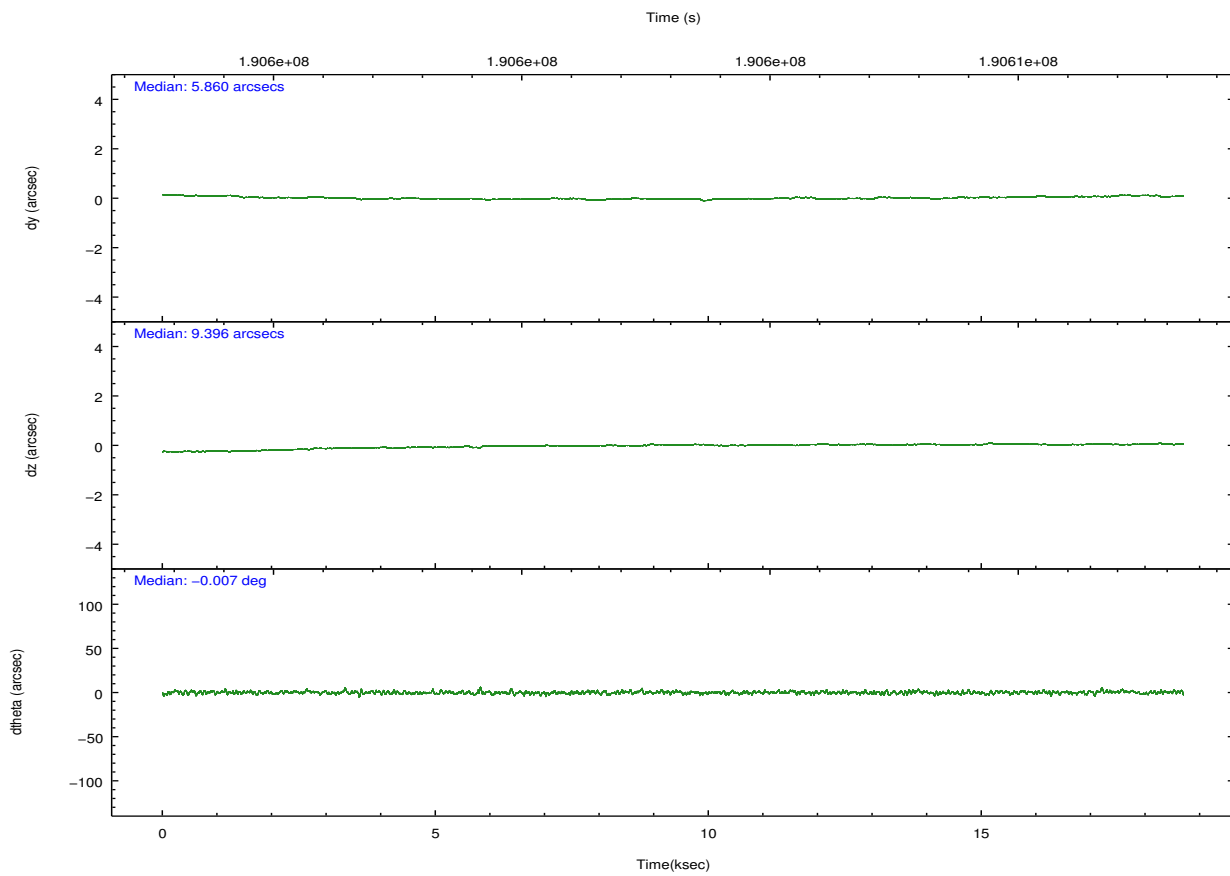
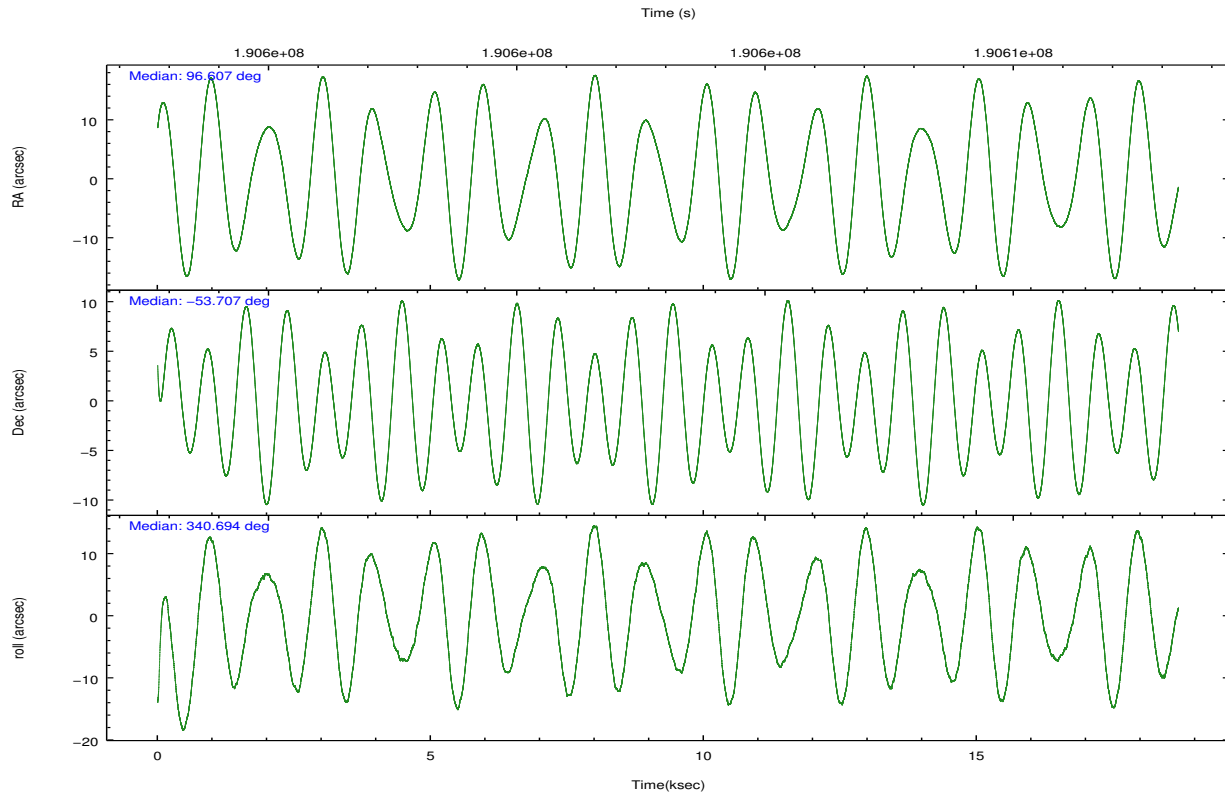
	ccd 0	ccd 1	ccd 2	ccd 3	ccd 6
level 1 events	94978	103220	117985	117269	101114
rejected events	78873	79637	93735	90337	87895
rejected %	83%	77%	79%	77%	86%

	ccd 0	ccd 1	ccd 2	ccd 3	ccd 6
grade 0 events	8504	14200	15542	17845	6071
	8%	13%	13%	15%	6%
grade 1 events	60	79	98	103	53
	0%	0%	0%	0%	0%
grade 2 events	2963	3736	3650	3701	2466
	3%	3%	3%	3%	2%
grade 3 events	1413	1651	1450	1611	1211
	1%	1%	1%	1%	1%
grade 4 events	1279	1542	1507	1579	1231
	1%	1%	1%	1%	1%
grade 5 events	3582	3782	3319	3973	3844
	3%	3%	2%	3%	3%
grade 6 events	2021	2545	2184	2300	2291
	2%	2%	1%	1%	2%
grade 7 events	75156	75685	90235	86157	83947
	79%	73%	76%	73%	83%

2.2 Compared Parameters

Parameter	Planned	Actual	Parameter	Planned	Actual
Instrument	ACIS	ACIS	Obspar format version number	7	7
Detector	ACIS-01236	ACIS-01236	Obspar file type	PREDICTED	ACTUAL
Grating	NONE	NONE	Obspar update status	NONE	UPDATED
Data mode	VFAINT	VFAINT	Number of optional ACIS chips dropped	0	0
Observation mode	POINTING	POINTING	On-chip summing requested	N	N
[deg] Pointing RA	96.561426	96.60687273879643	Subarray requested	NONE	NONE
[deg] Pointing Dec	-53.712686	-53.70747883325165	Alternating exposures requested	N	N
[deg] Pointing Roll	340.451979	340.697289537913	[s] Primary exposure time	0.000000	3.1
[mm] SIM focus pos	-0.782348	-0.7809083437167272			
[mm] SIM defocus	0	0.001439871863259334			
[mm] SIM translation stage pos	-233.592463	-233.5874344608287			
[mm] SIM translation stage offset	0	-0.005018542100998502			
[s] Observation start time (MET)	190593856.184000	190592863.96664			
Observation start date	2004-01-15T22:43:12	2004-01-15T22:27:43			
[s] Observation end time (MET)	190612401.184000	190613181.00502			
Observation end date	2004-01-16T03:52:17	2004-01-16T04:06:21			
Read mode	TIMED	TIMED			

2.3 Aspect

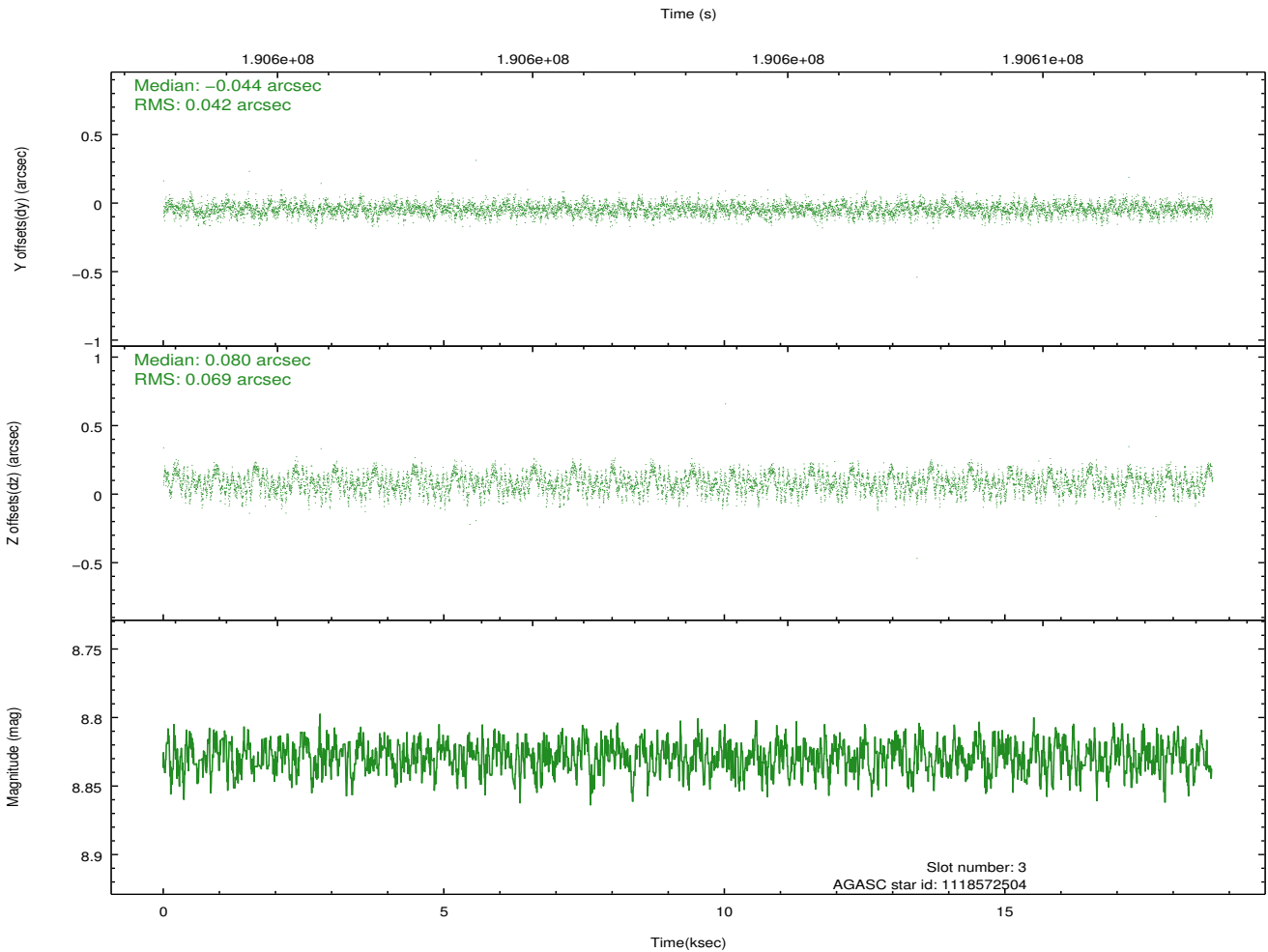
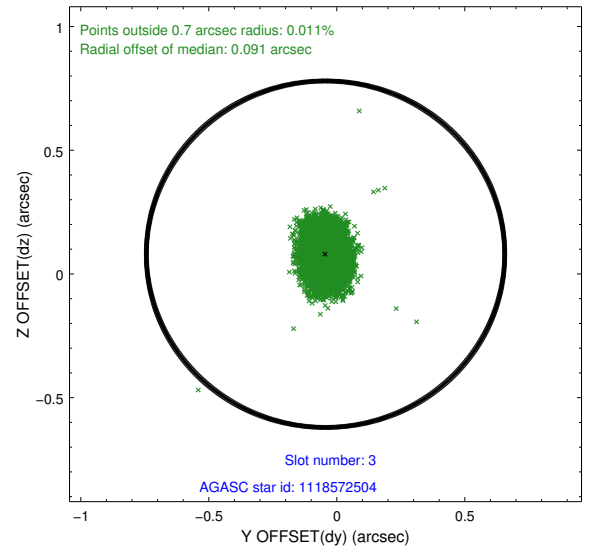
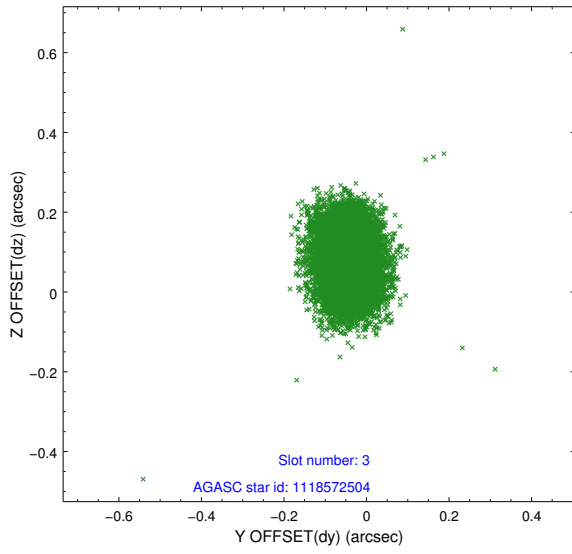


Slot Statistics

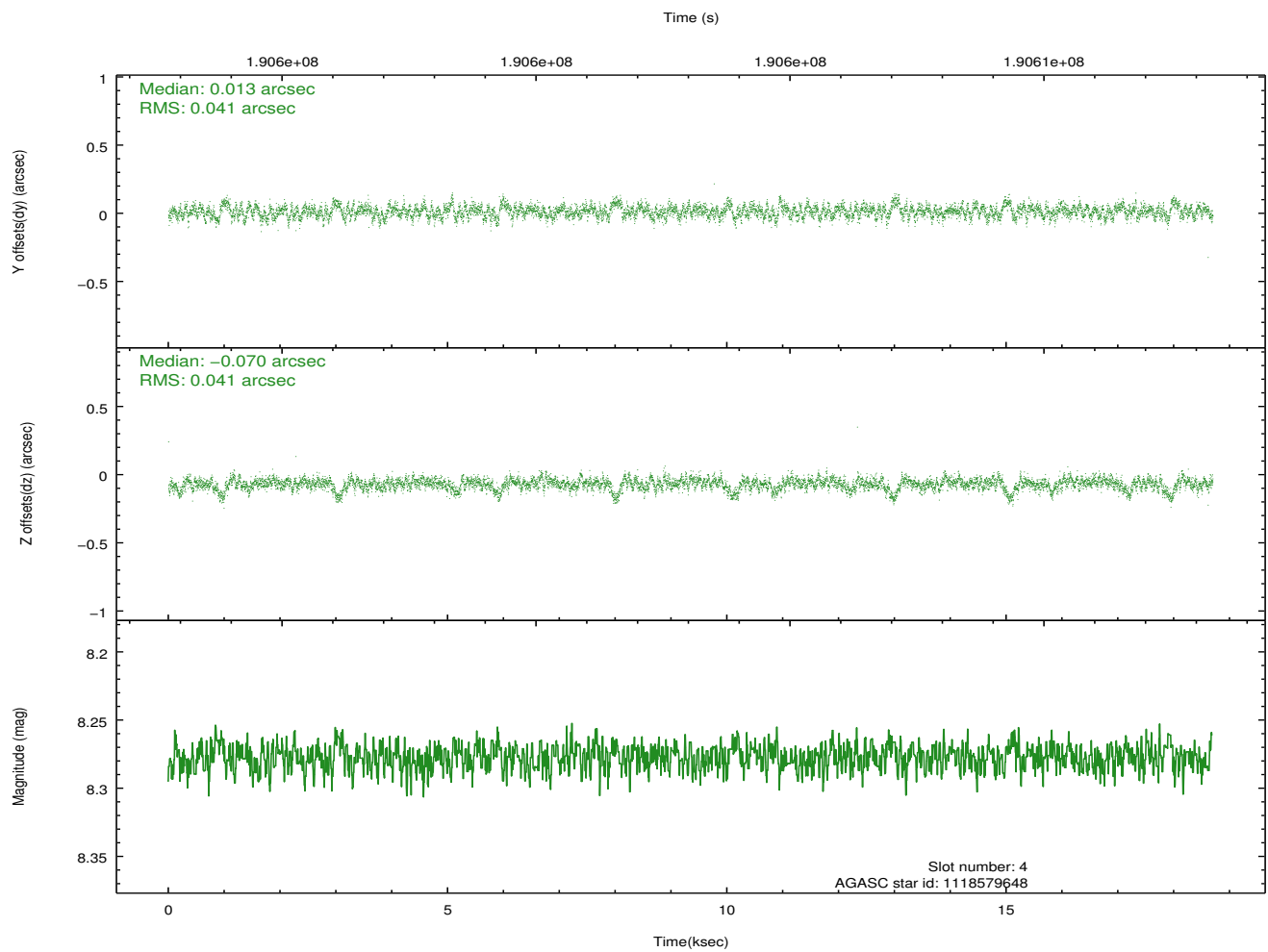
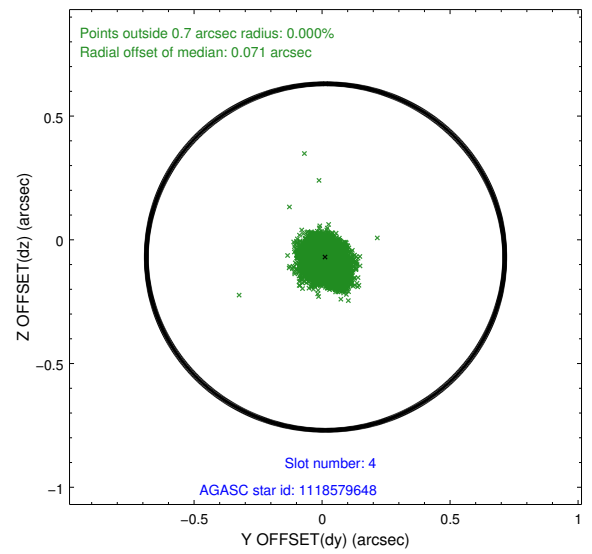
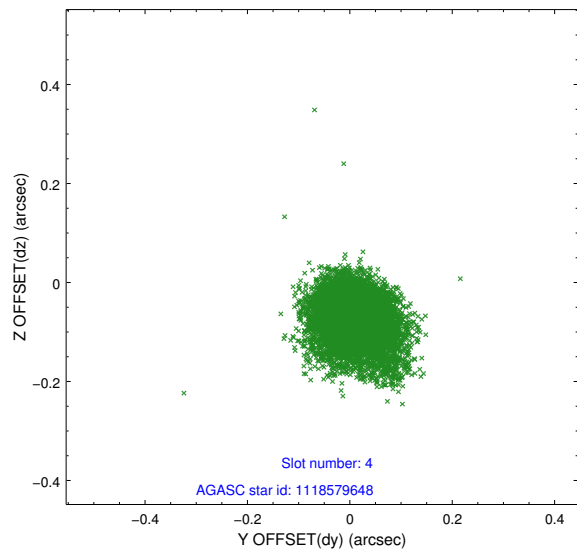
slot	status	id	mag	n_pts	med_dy	med_dz	dr1	dr2	ra	dec	mean_y	mean_z
0	FID	ACIS-I-1	7.24	4561	0.000	0.024	0.005	0.009	0.000000	0.000000	933.92	-832.71
1	FID	ACIS-I-2	7.14	4561	-0.061	0.022	0.005	0.009	0.000000	0.000000	-760.11	-839.41
2	OMITTED		0.00	0	0.000	0.000	0.000	0.000	0.000000	0.000000	0.00	0.00
3	GUIDE	1118572504	8.83	9118	-0.044	0.080	0.086	0.136	95.500559	-53.969973	-1801.11	-1640.25
4	GUIDE	1118579648	8.28	9121	0.013	-0.070	0.059	0.104	95.882841	-53.426139	-1714.58	478.31
5	GUIDE	1118709640	8.36	9121	0.101	-0.034	0.057	0.092	96.832931	-53.566231	371.01	690.30
6	GUIDE	1118585584	9.29	9117	-0.065	0.013	0.115	0.179	96.562758	-53.004125	-850.76	2404.92
7	GUIDE	1118708840	9.35	9112	-0.008	0.022	0.120	0.188	97.367547	-53.266037	1100.96	2087.24

2.4 Star Slots

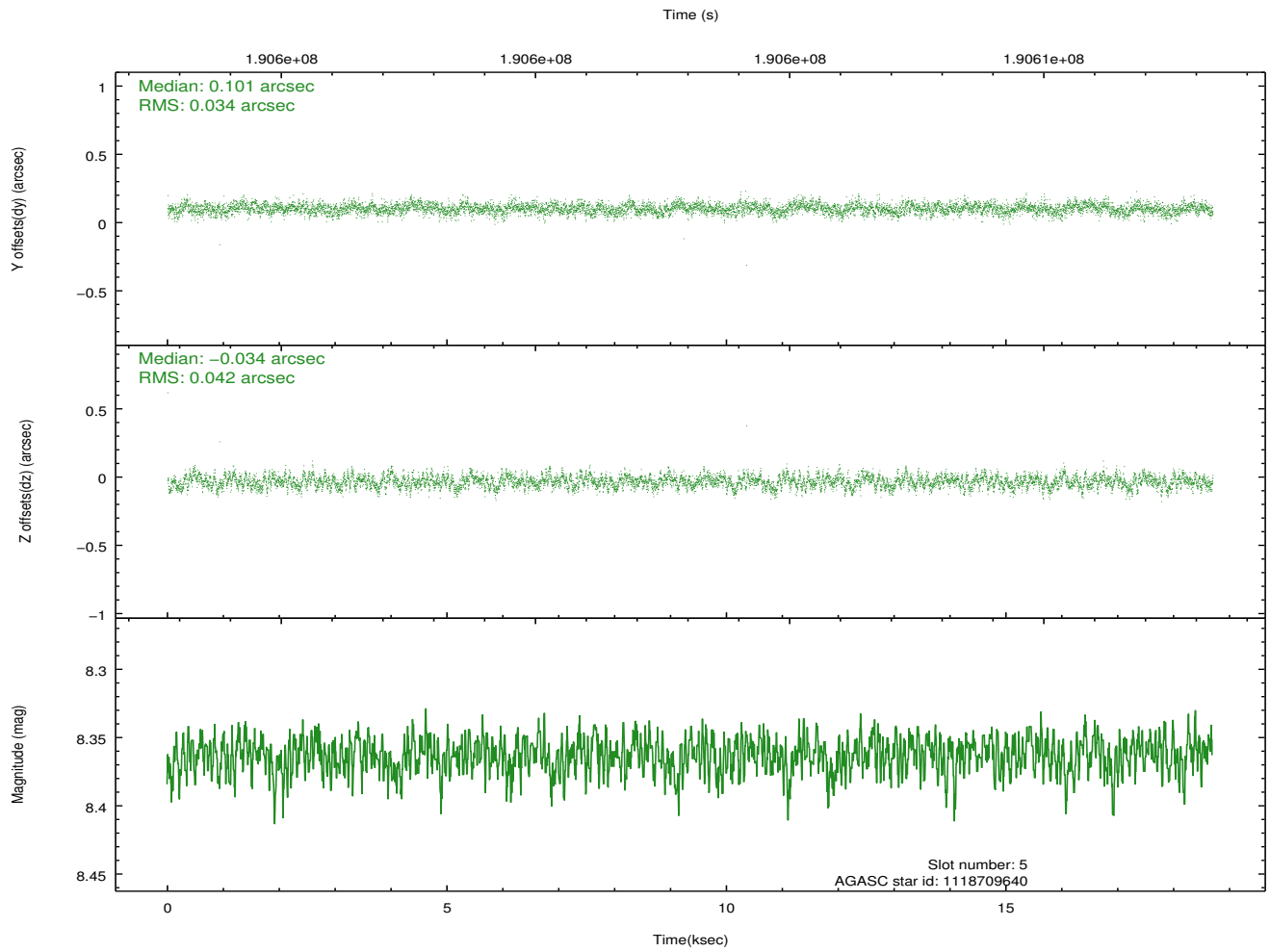
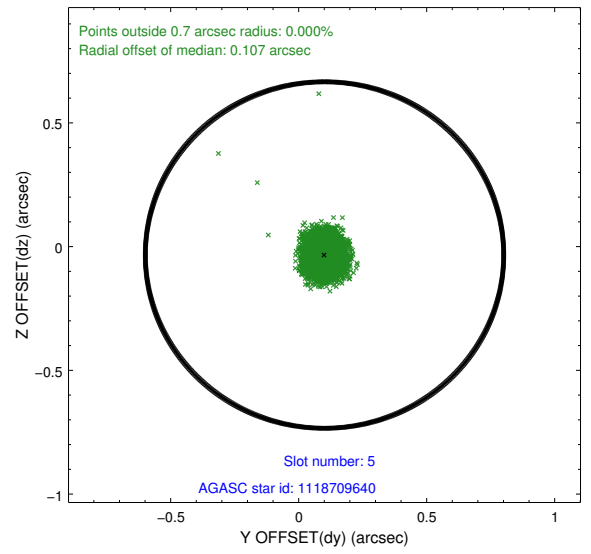
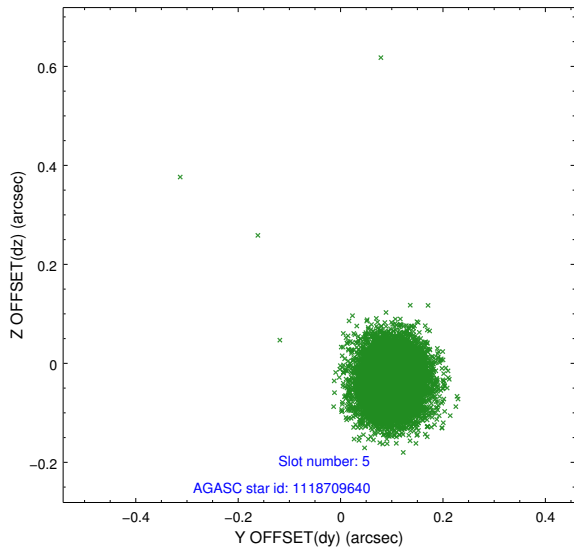
2.4.1 Slot 3



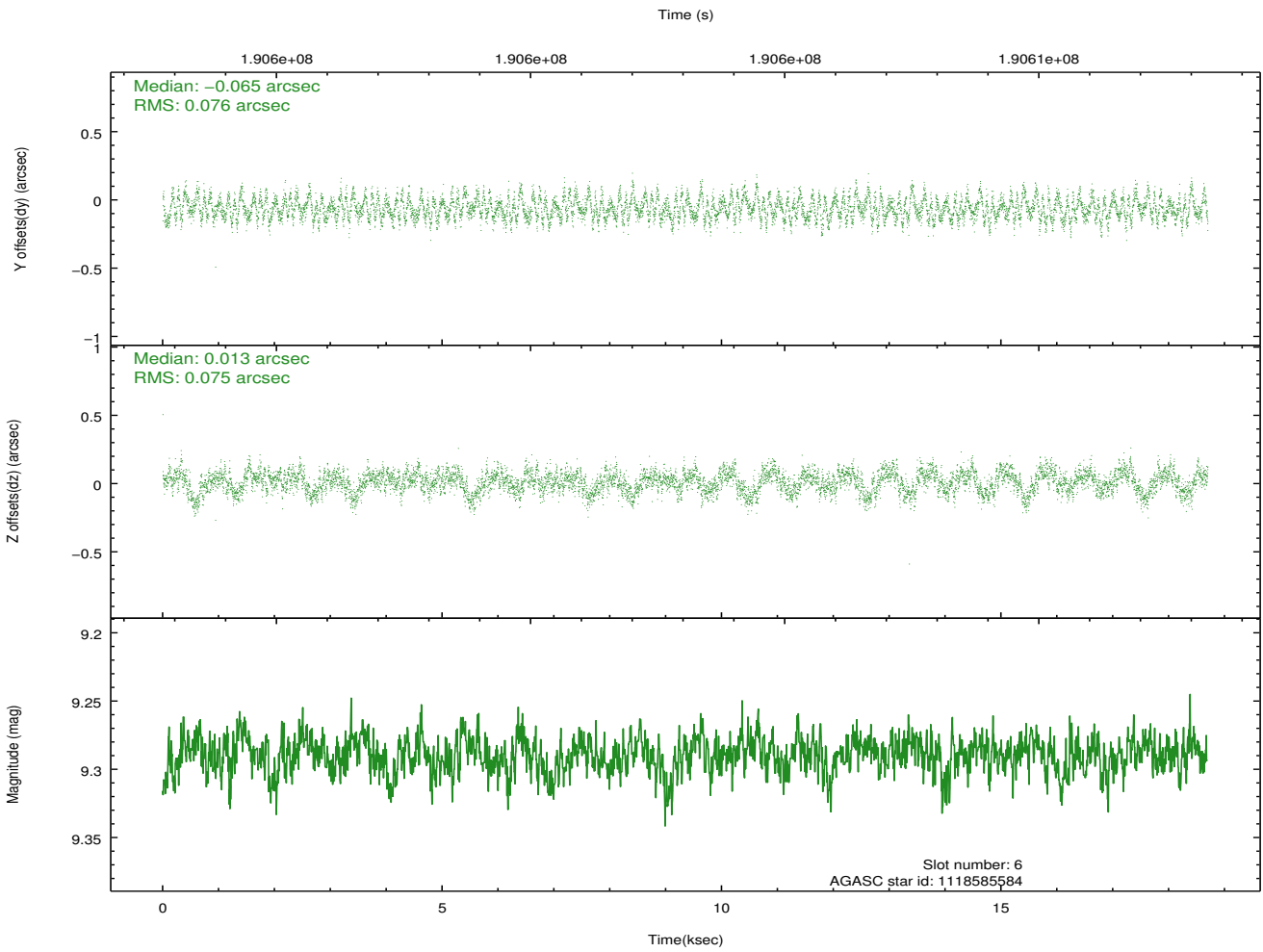
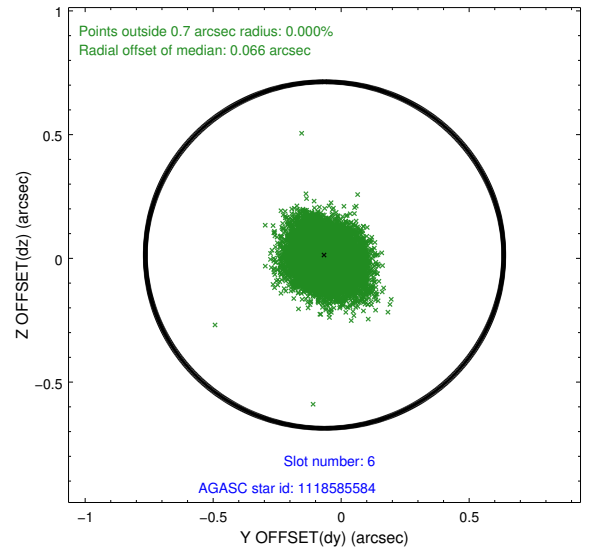
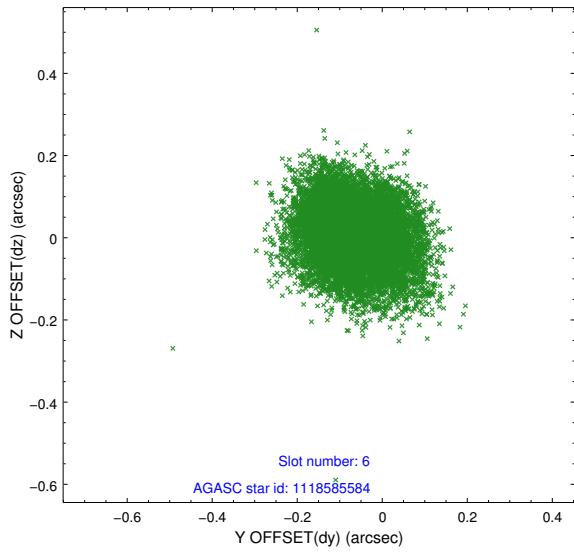
2.4.2 Slot 4



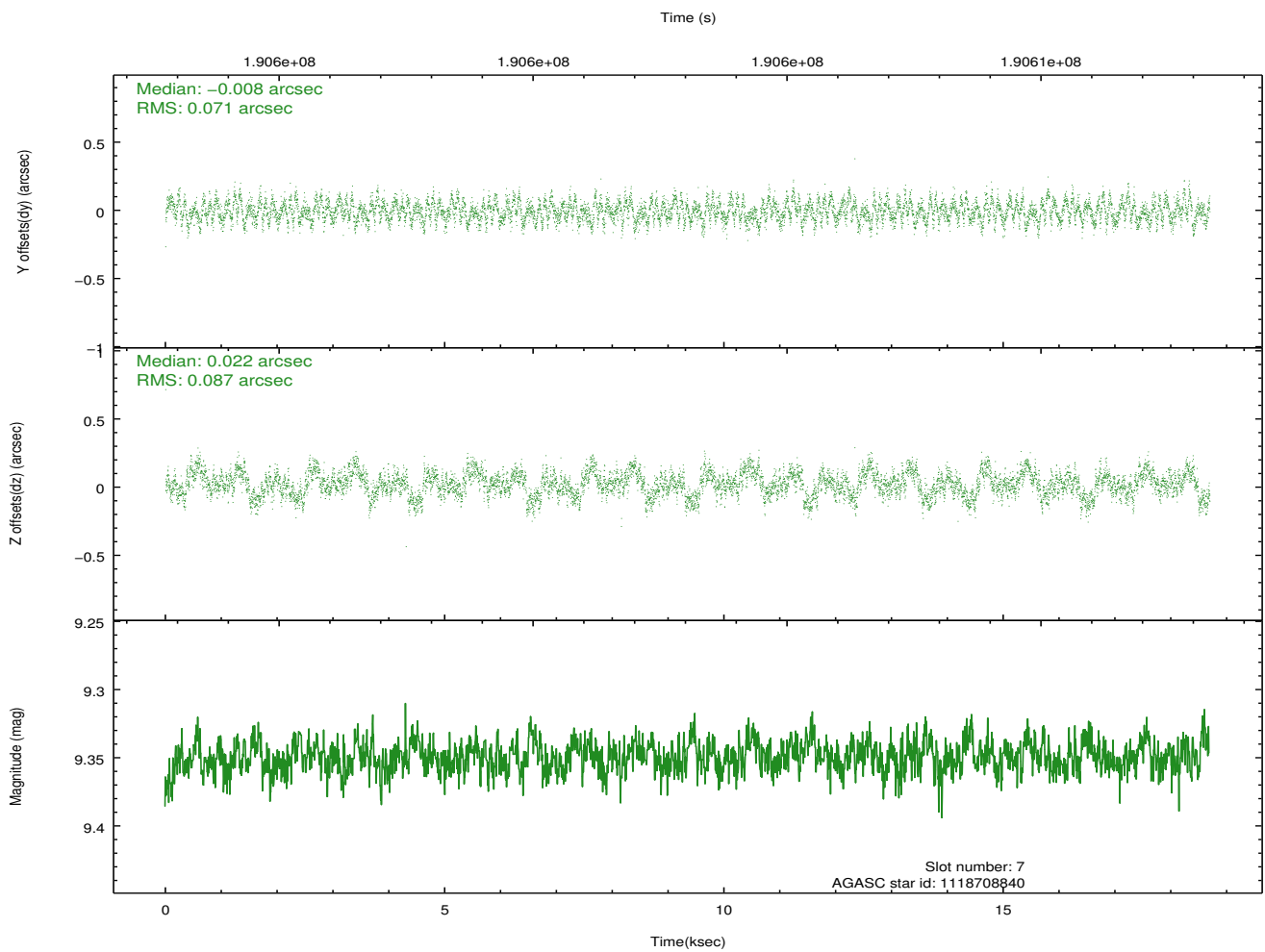
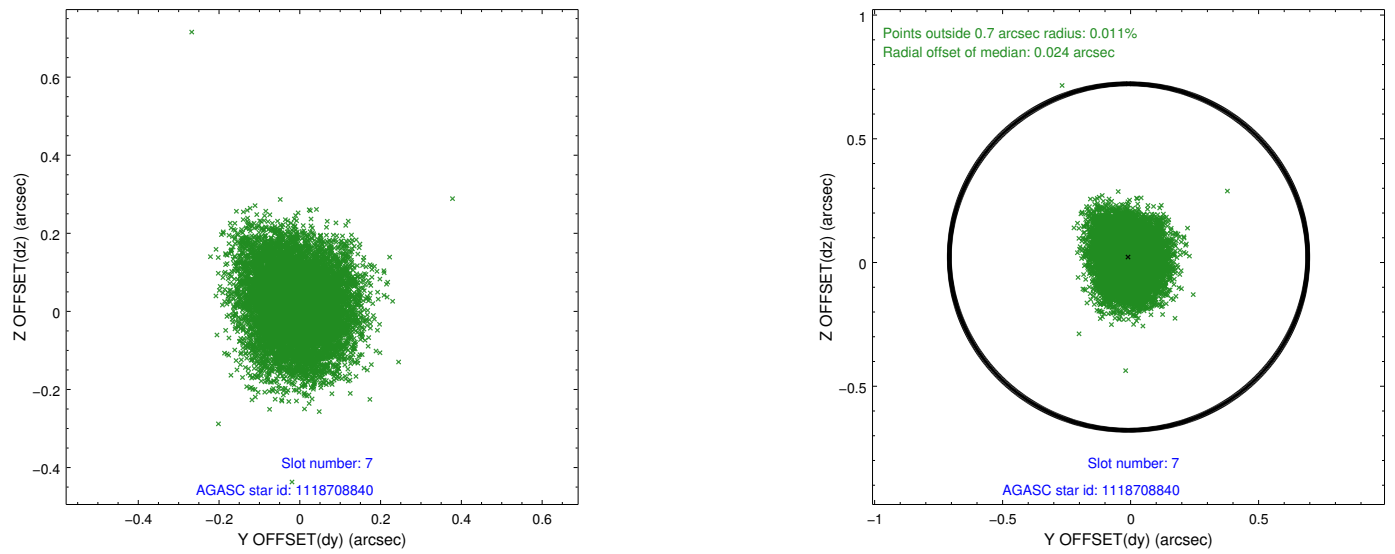
2.4.3 Slot 5



2.4.4 Slot 6

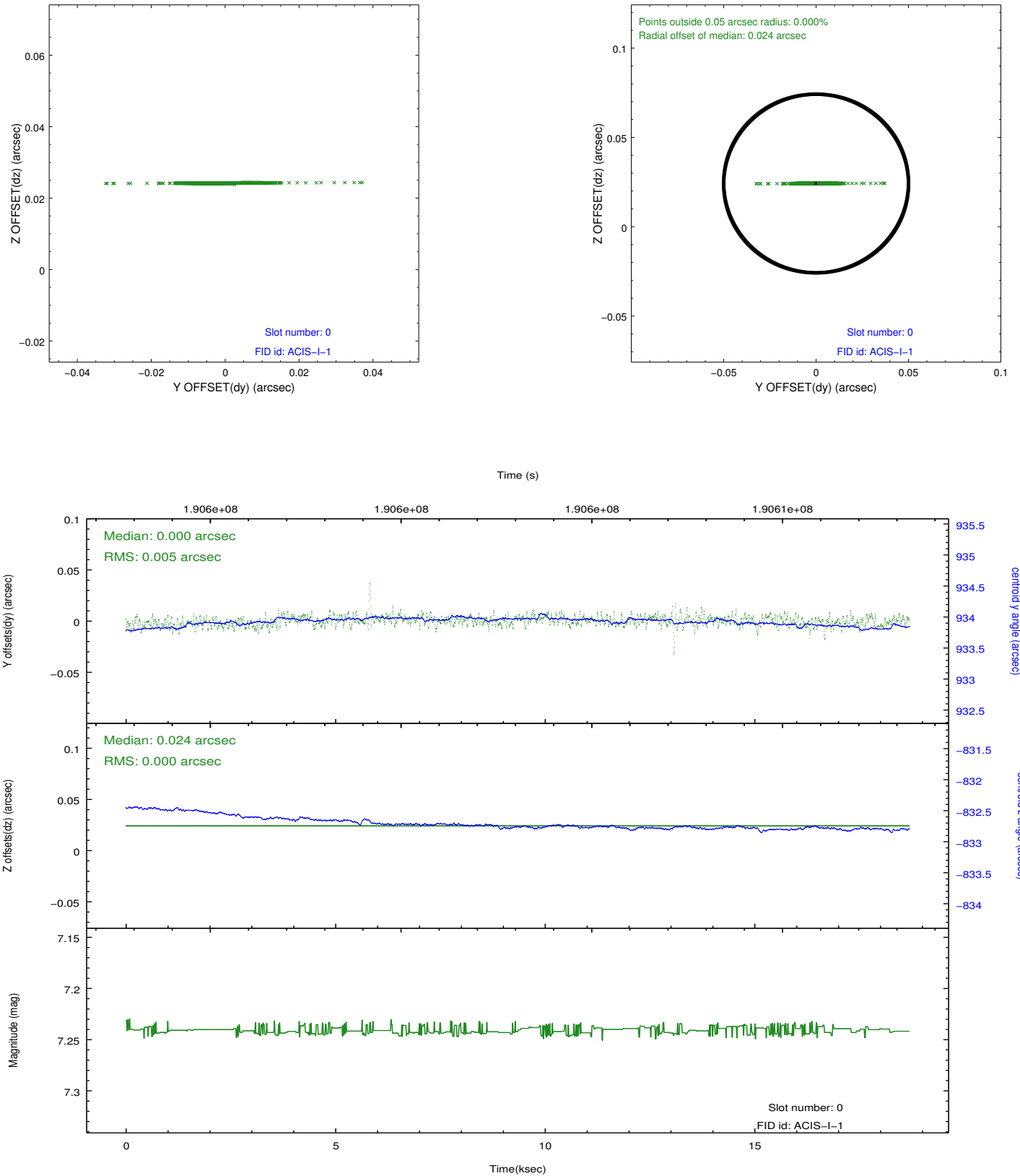


2.4.5 Slot 7

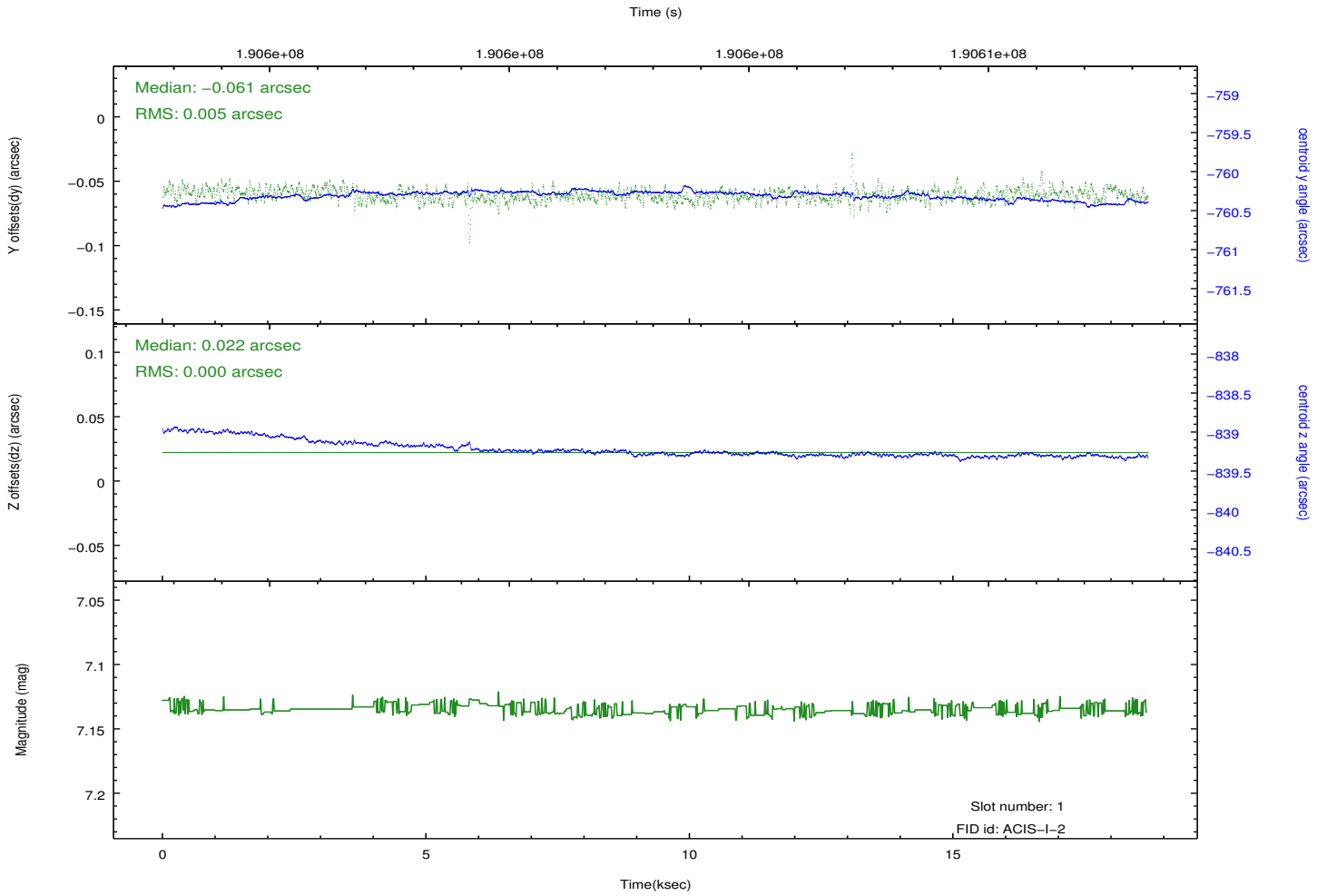
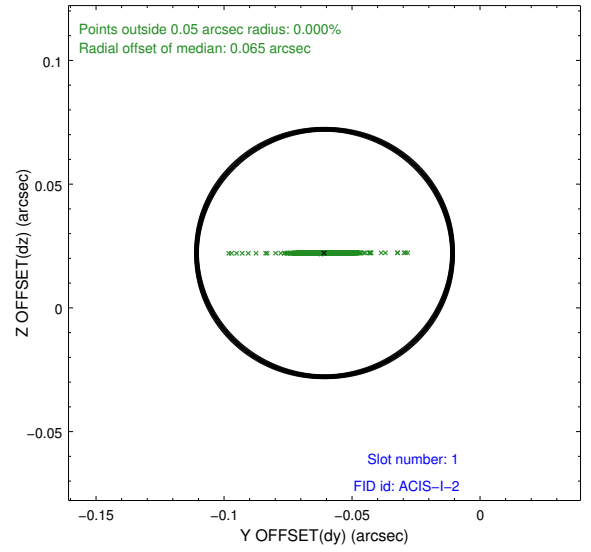
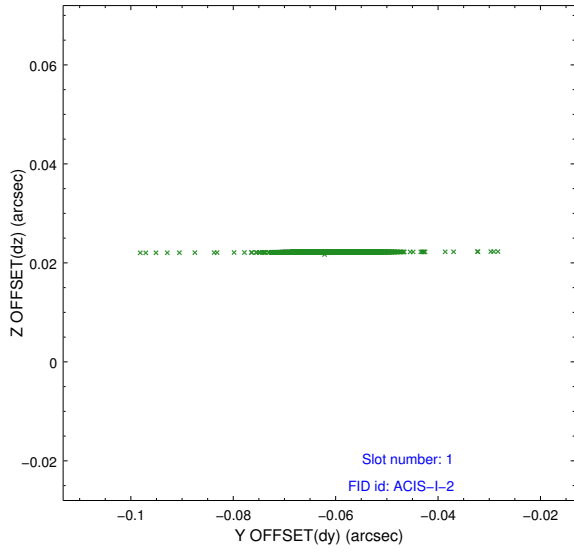


2.5 FID Slots

2.5.1 Slot 0



2.5.2 Slot 1



A Summary

A.1 Status

V&V Scientist	Beth Sundheim
V&V Date (YYYY-MM-DD)	2013.01.24
V&V Edition	1
V&V Disposition and Status	OK
V&V Charge Time	18.692

A.2 Comments

The fid light in slot 2 was removed from the aspect solution due to poor data quality. The aspect solution is improved by the removal of this fid light from the solution.