

V&V Reference Report

L2 ASCDS Version : 8.5

Observation 4953 - L2 Version 3
Chandra X-Ray Center

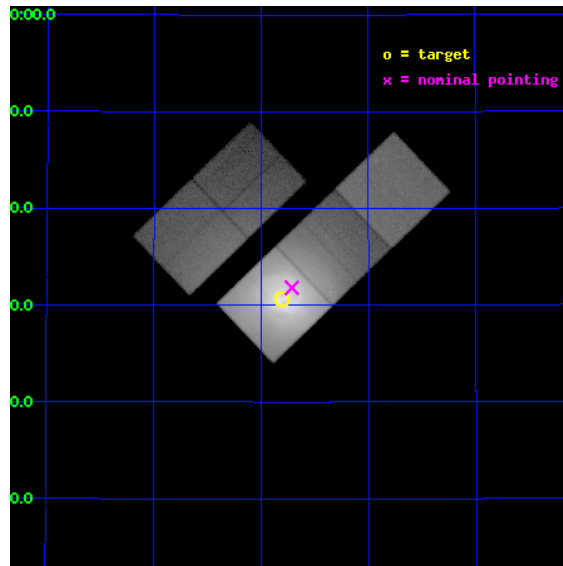
L2 Processing Date : Dec 10 2012

Contents

1	Front	2
2	OBI	3
2.1	OBI	3
2.1.1	Images	3
2.1.2	Bias	3
2.1.3	Parameters	4
2.1.4	Events	4
2.2	Compared Parameters	5
2.3	Aspect	6
2.4	Star Slots	9
2.4.1	Slot 3	9
2.4.2	Slot 4	10
2.4.3	Slot 5	11
2.4.4	Slot 6	12
2.4.5	Slot 7	13
2.5	FID Slots	14
2.5.1	Slot 0	14
2.5.2	Slot 1	15
2.5.3	Slot 2	16
A	Summary	17
A.1	Status	17
A.2	Comments	17

1 Front

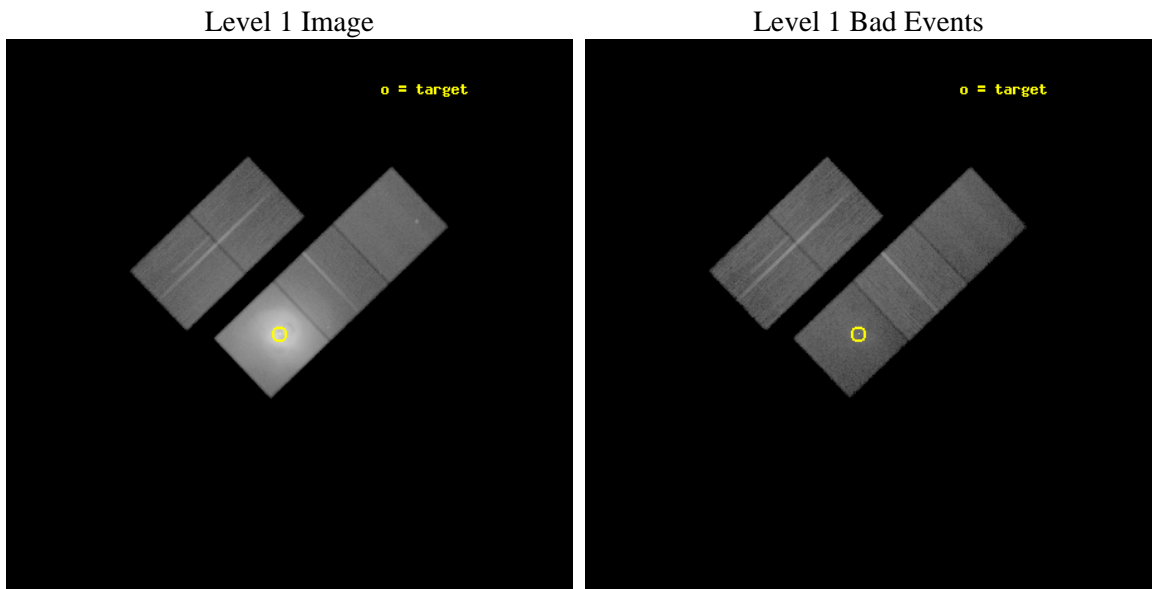
seq_num	800400	Sequence number
obs_id	4953	Observation id
title	A Megasecond Image of the Core of the Perseus Cluster	Proposal tit
observer	Professor Andrew Fabian	Principal investigator
object	Abell 426	Source name
dtycycle	0	
cycle	P	events from which exps? Prim/Second/Both
ra_targ	49.950833	Observer's specified target RA [deg]
dec_targ	41.511722	Observer's specified target Dec [deg]
ra_nom	49.928430628032	Nominal RA [deg]
dec_nom	41.53016629672	Nominal Dec [deg]
roll_nom	136.24476520794	Nominal Roll [deg]
revision	3	Processing version of data
ontime	30475.934998304	Sum of GTIs [s]
liveltime	30077.744471494	Livetime [s]
ontime2	30472.629867971	Sum of GTIs [s]
ontime3	30475.811888218	Sum of GTIs [s]
ontime5	30475.8939583	Sum of GTIs [s]
ontime6	30475.852928221	Sum of GTIs [s]
ontime7	30475.934998304	Sum of GTIs [s]
l2events	2995761	Number of level 2 events



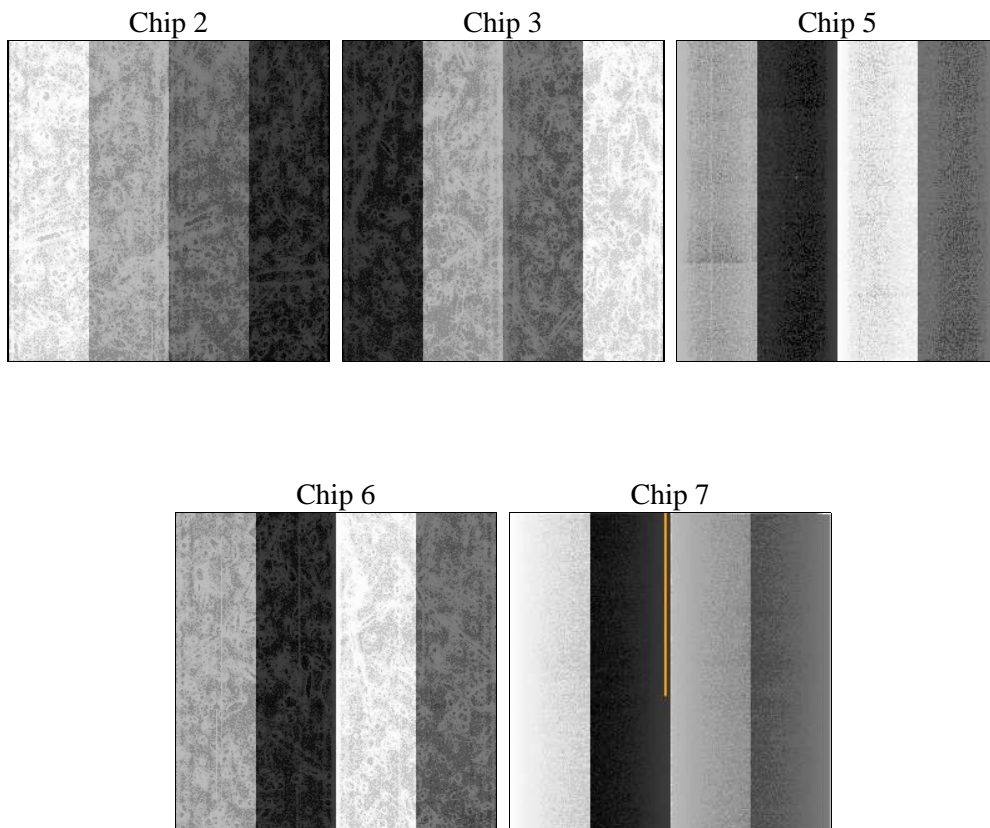
2 OBI

2.1 OBI

2.1.1 Images



2.1.2 Bias



2.1.3 Parameters

obi_num	1	Obi number	sched_exp_time	30703.276000	[s] Scheduled observation exposure time
ascdsver	8.5	Processing system revision	ontime	30475.934998304	Sum of GTIs [s]
caldbver	4.5.4	 	ontime2	30472.629867971	Sum of GTIs [s]
date	2012-12-10T10:35:08	Date and time of file creation	ontime3	30475.811888218	Sum of GTIs [s]
revision	3	Processing version of data	ontime5	30475.8939583	Sum of GTIs [s]
			ontime6	30475.852928221	Sum of GTIs [s]
			ontime7	30475.934998304	Sum of GTIs [s]
			l1events	3907098	Number of level 1 events

2.1.4 Events

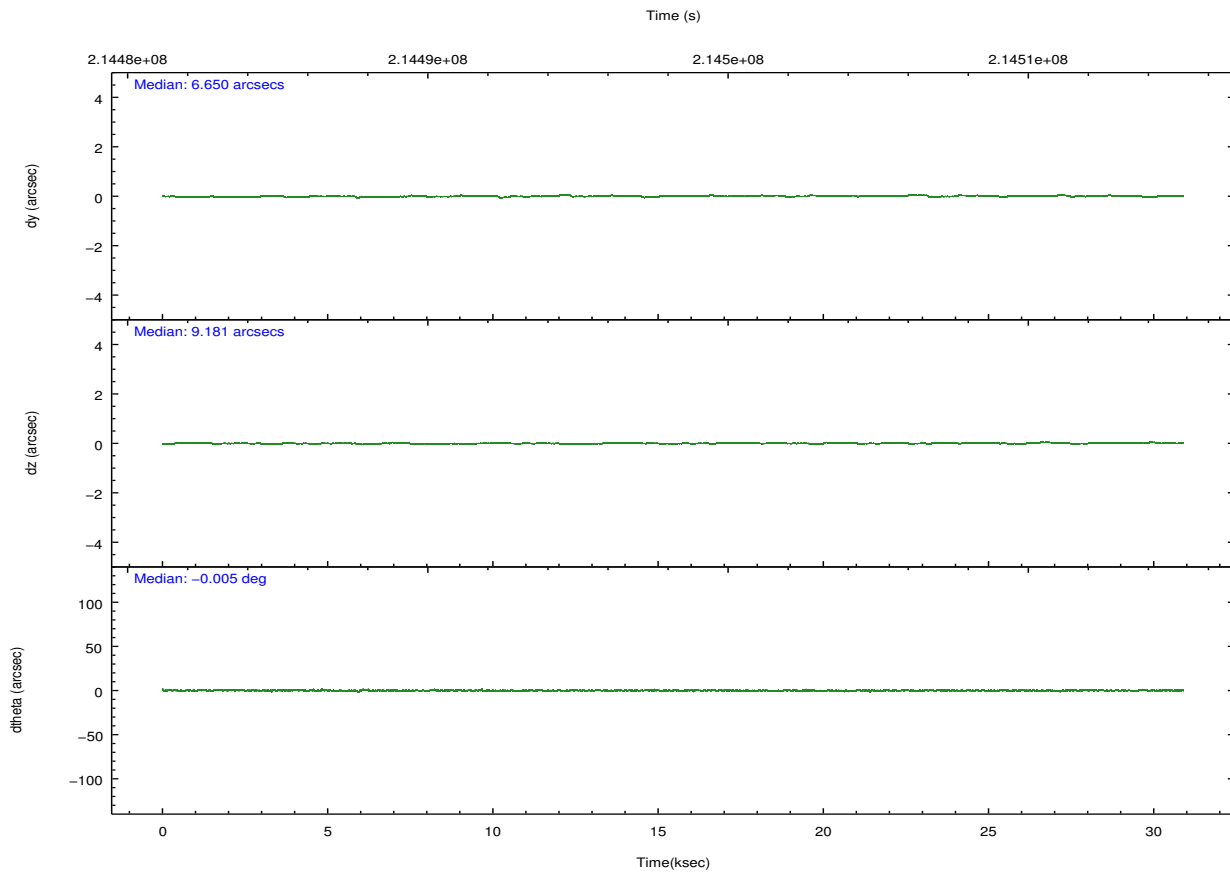
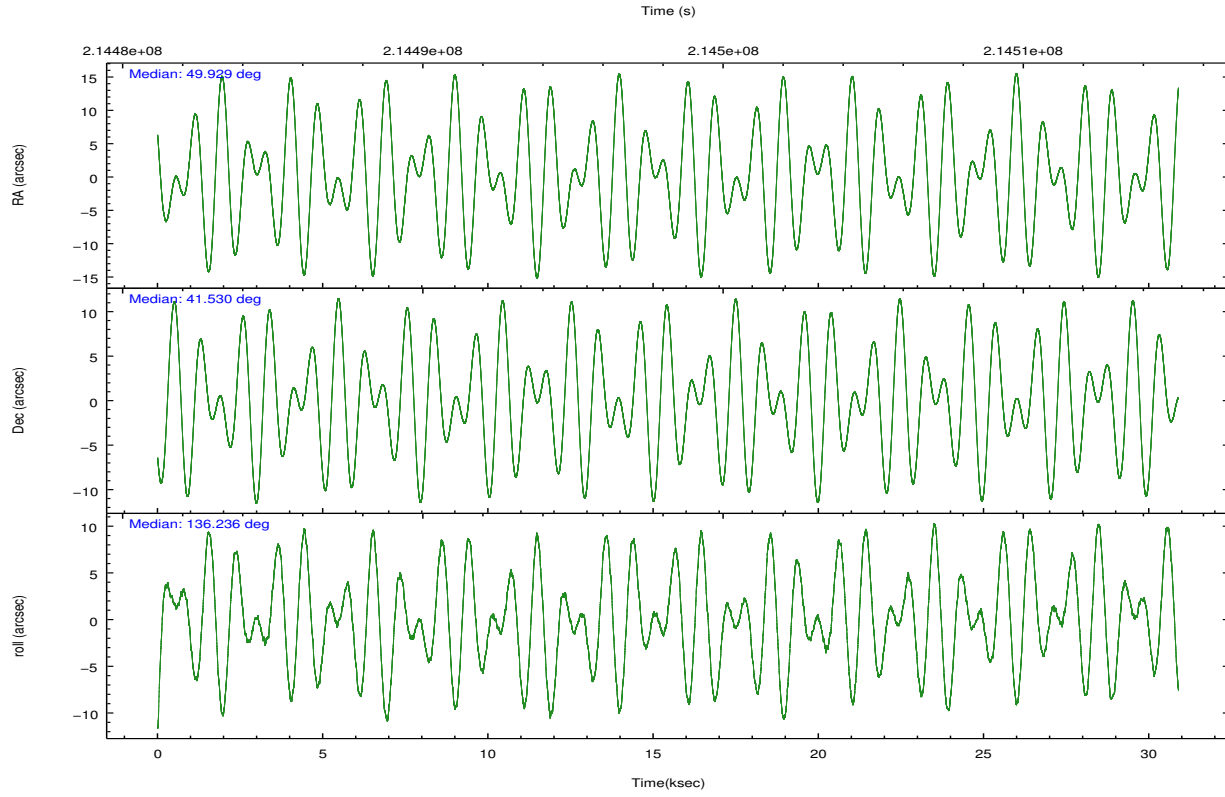
	ccd 2	ccd 3	ccd 5	ccd 6	ccd 7
level 1 events	270934	313122	310321	465123	2547598
rejected events	193661	184258	138427	190401	150763
rejected %	71%	58%	44%	40%	5%

	ccd 2	ccd 3	ccd 5	ccd 6	ccd 7
grade 0 events	54023	95748	23713	211210	660459
	19%	30%	7%	45%	25%
grade 1 events	362	553	247	940	1835
	0%	0%	0%	0%	0%
grade 2 events	10102	15052	51501	31251	629792
	3%	4%	16%	6%	24%
grade 3 events	3968	5810	9848	10231	279545
	1%	1%	3%	2%	10%
grade 4 events	3987	5720	9558	10443	276251
	1%	1%	3%	2%	10%
grade 5 events	6589	8097	22095	8852	40102
	2%	2%	7%	1%	1%
grade 6 events	5204	6547	77295	11621	551032
	1%	2%	24%	2%	21%
grade 7 events	186699	175595	116064	180575	108582
	68%	56%	37%	38%	4%

2.2 Compared Parameters

Parameter	Planned	Actual	Parameter	Planned	Actual
Instrument	ACIS	ACIS	Obspar format version number	7	7
Detector	ACIS-23567	ACIS-23567	Obspar file type	PREDICTED	ACTUAL
Grating	NONE	NONE	Obspar update status	NONE	UPDATED
Data mode	FAINT	FAINT	Number of optional ACIS chips dropped	0	0
Observation mode	POINTING	POINTING	On-chip summing requested	N	N
[deg] Pointing RA	49.963912	49.92843062803165	Subarray requested	NONE	NONE
[deg] Pointing Dec	41.524049	41.53016629672041	Alternating exposures requested	N	N
[deg] Pointing Roll	136.064614	136.2447652079445	[s] Primary exposure time	0.000000	3.1
[mm] SIM focus pos	-0.684267	-0.6828225247311905			
[mm] SIM defocus	0	0.001444936568705701			
[mm] SIM translation stage pos	-190.132523	-190.1425803651734			
[mm] SIM translation stage offset	0	0.01005778216563158			
[s] Observation start time (MET)	214482917.184000	214482536.43512			
Observation start date	2004-10-18T10:34:13	2004-10-18T10:28:56			
[s] Observation end time (MET)	214513621.184000	214513839.42403			
Observation end date	2004-10-18T19:05:57	2004-10-18T19:10:39			
Read mode	TIMED	TIMED			

2.3 Aspect

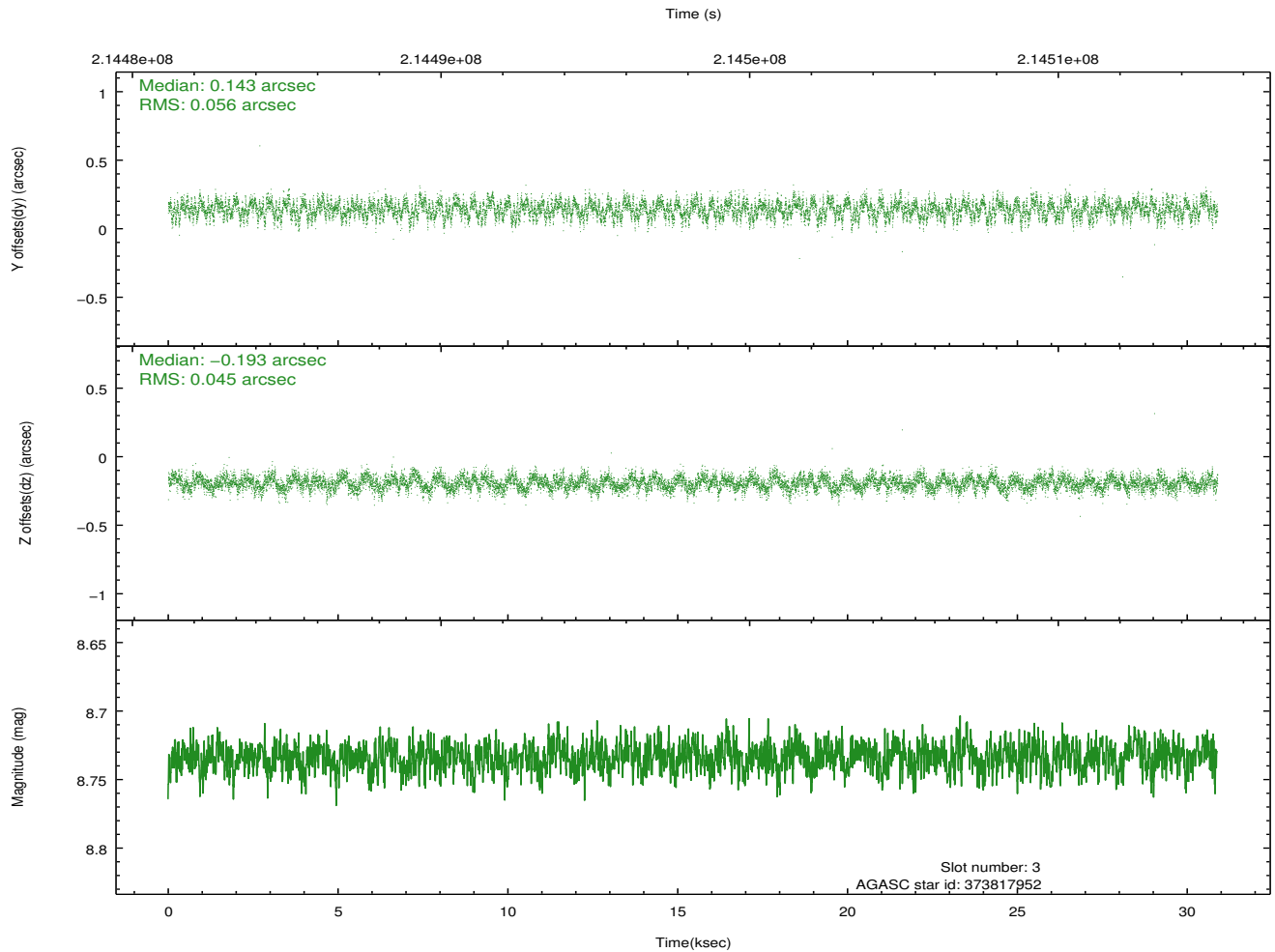
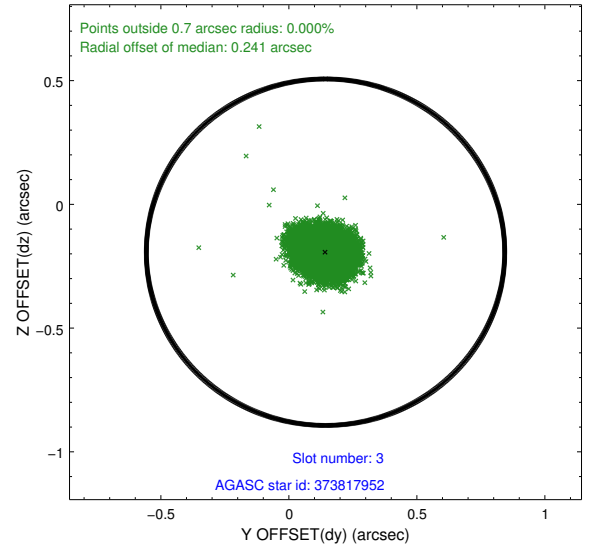
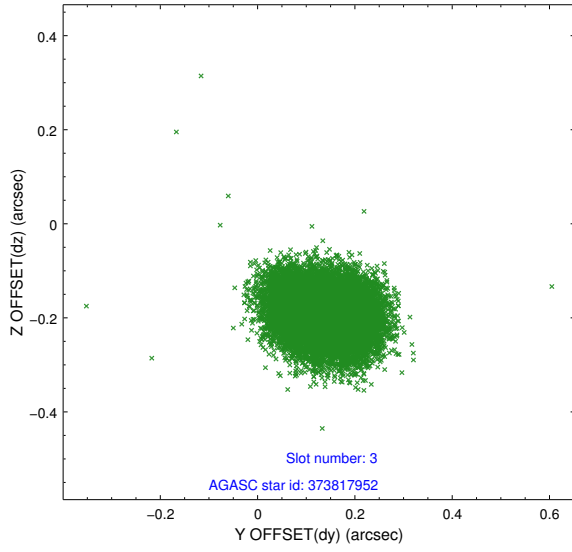


Slot Statistics

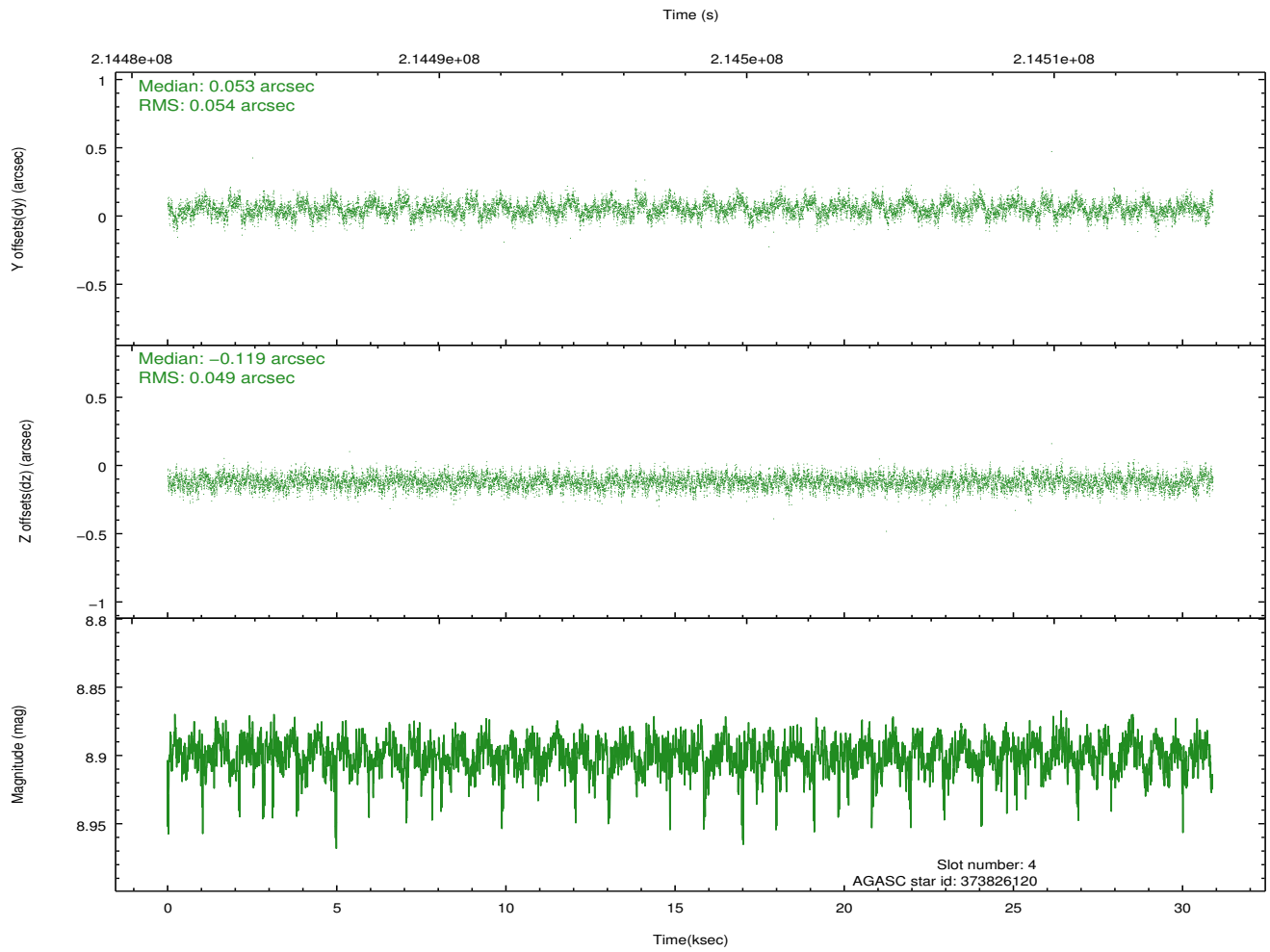
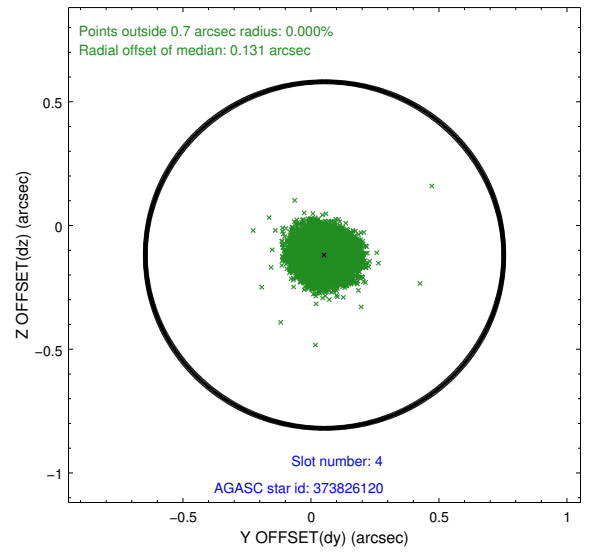
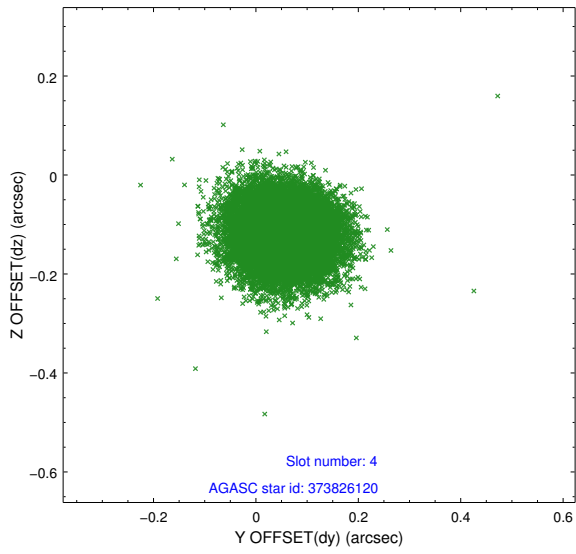
slot	status	id	mag	n_pts	med_dy	med_dz	dr1	dr2	ra	dec	mean_y	mean_z
0	FID	ACIS-S-1	7.19	7533	0.031	-0.006	0.006	0.011	0.000000	0.000000	936.66	-1725.99
1	FID	ACIS-S-5	7.24	7535	-0.064	0.029	0.006	0.011	0.000000	0.000000	-1812.37	171.55
2	FID	ACIS-S-6	7.35	7534	0.011	-0.012	0.007	0.011	0.000000	0.000000	402.15	815.53
3	GUIDE	373817952	8.73	15069	0.143	-0.193	0.076	0.122	49.913424	40.978510	-1263.79	1509.26
4	GUIDE	373826120	8.90	15065	0.053	-0.119	0.077	0.123	49.738165	41.186341	-402.57	1299.35
5	GUIDE	374352808	8.77	15069	-0.063	0.110	0.070	0.113	49.969955	42.208621	1698.74	-1785.32
6	GUIDE	374357808	8.67	15066	-0.153	0.090	0.080	0.132	49.921429	42.176083	1710.70	-1611.42
7	GUIDE	376057824	8.35	15065	0.021	0.117	0.089	0.134	50.665569	41.926280	-342.84	-2352.08

2.4 Star Slots

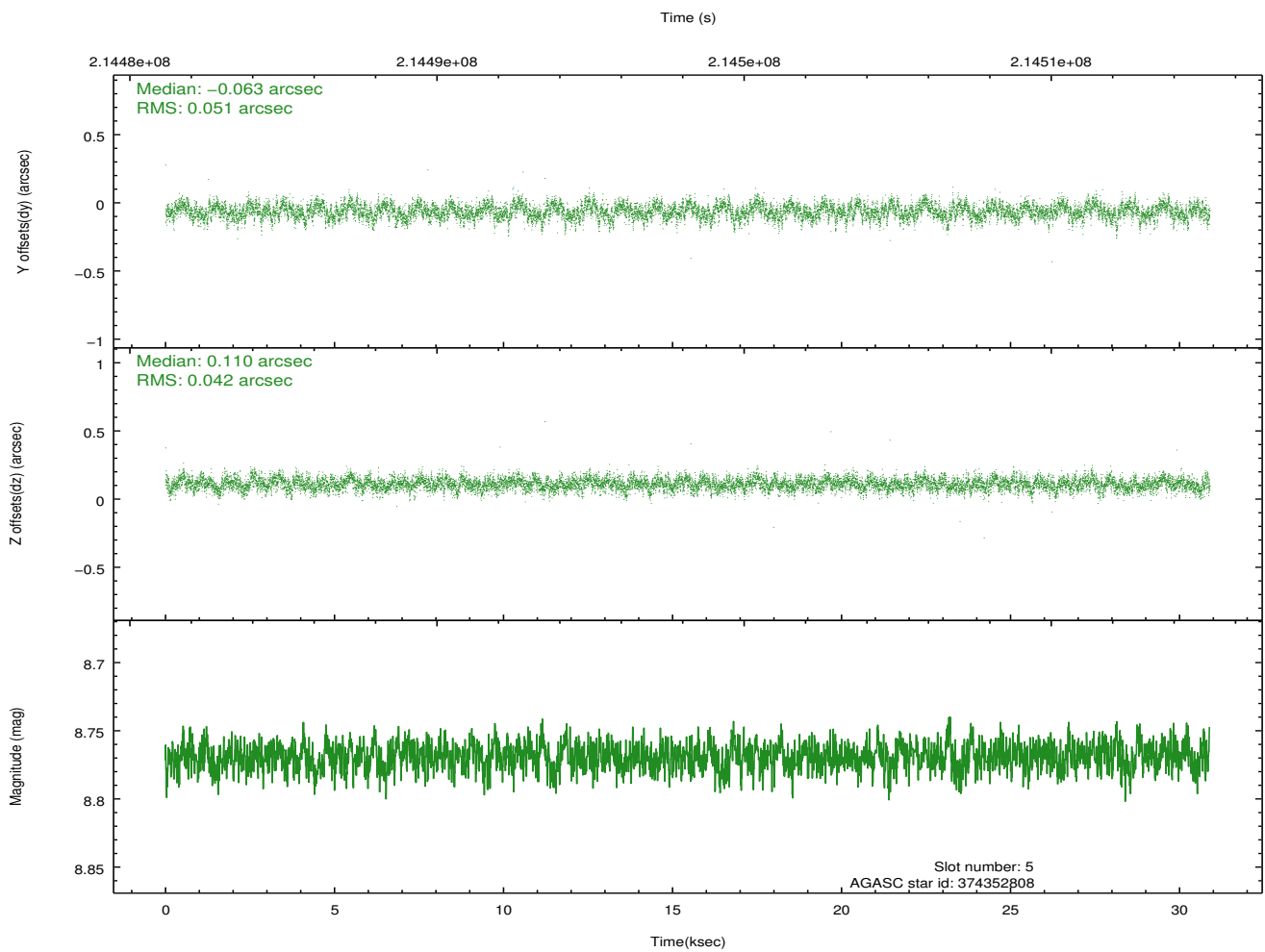
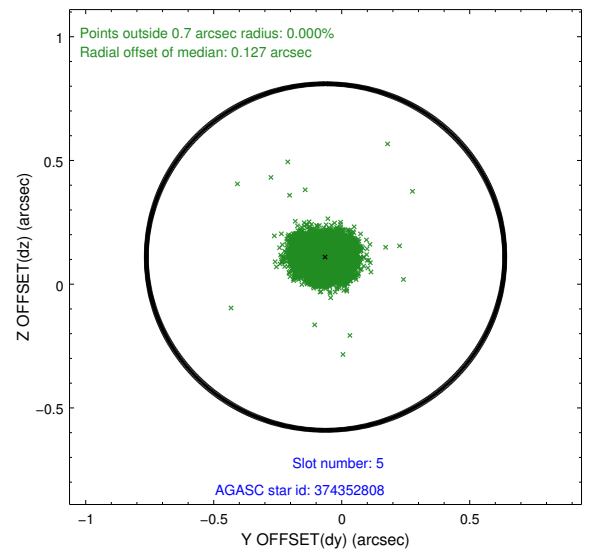
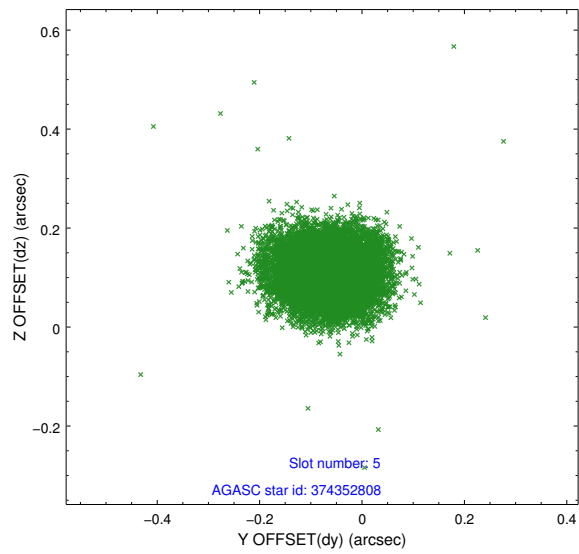
2.4.1 Slot 3



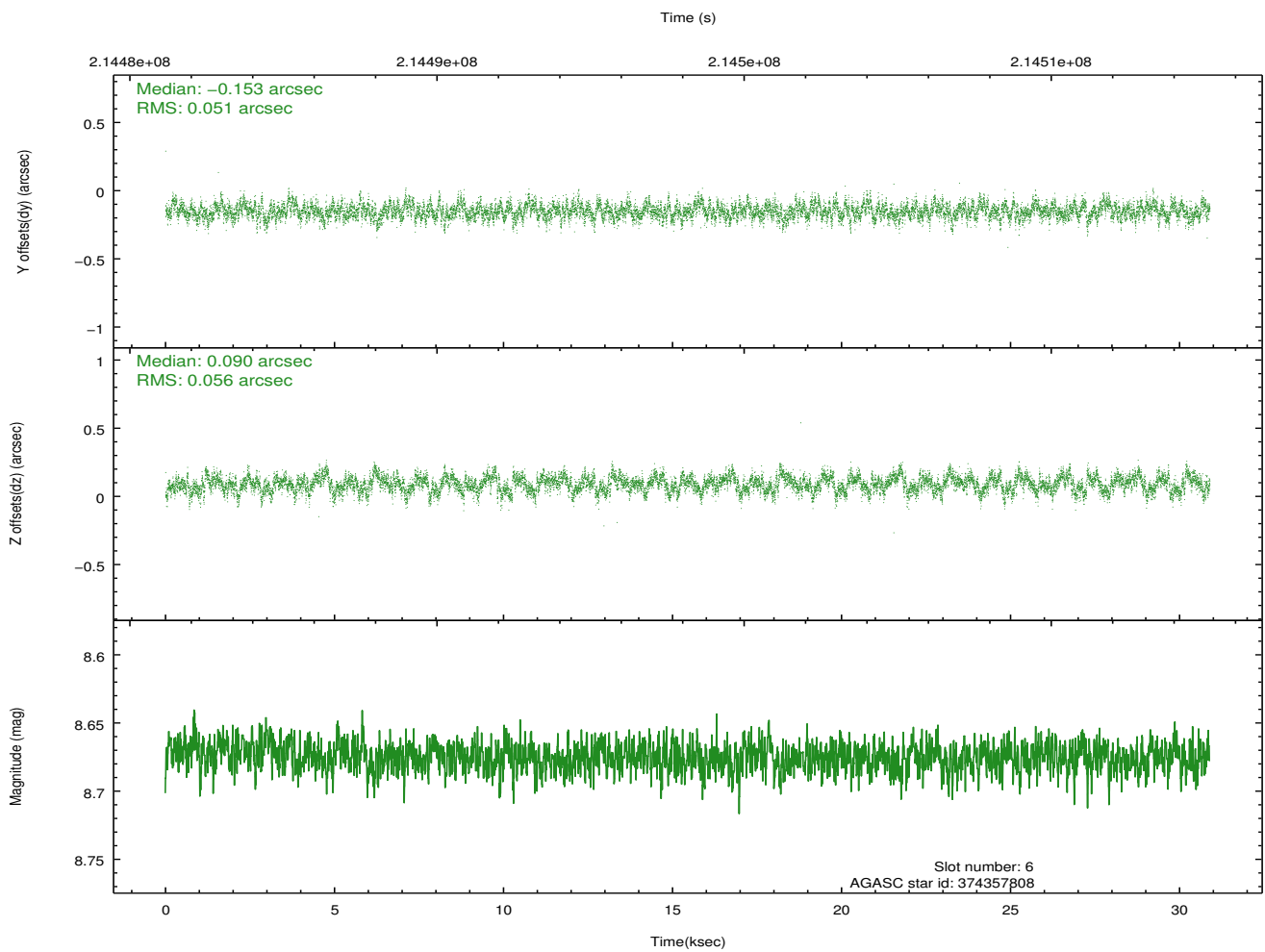
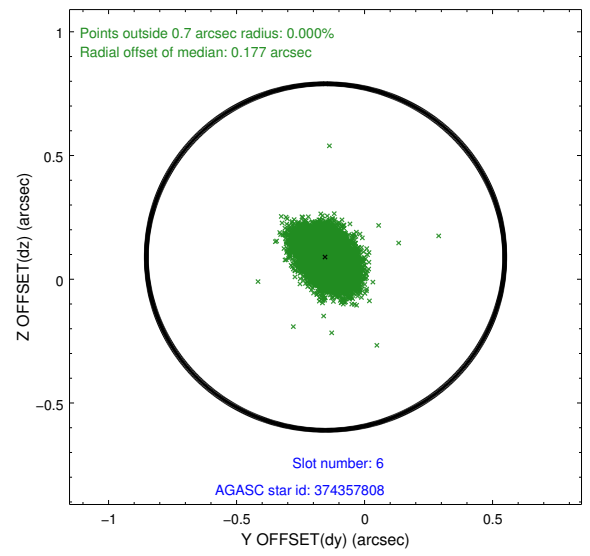
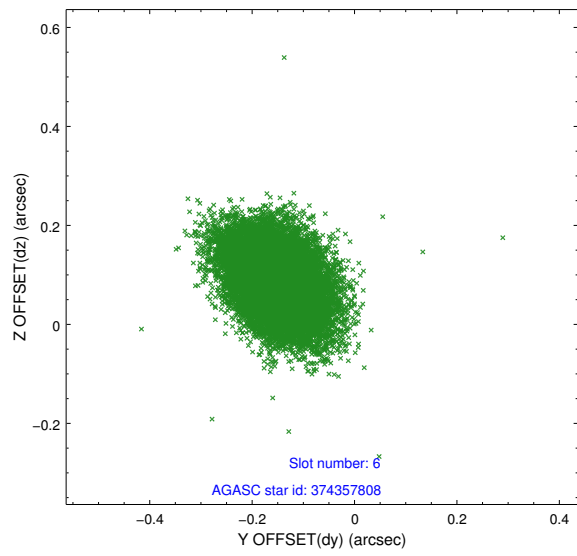
2.4.2 Slot 4



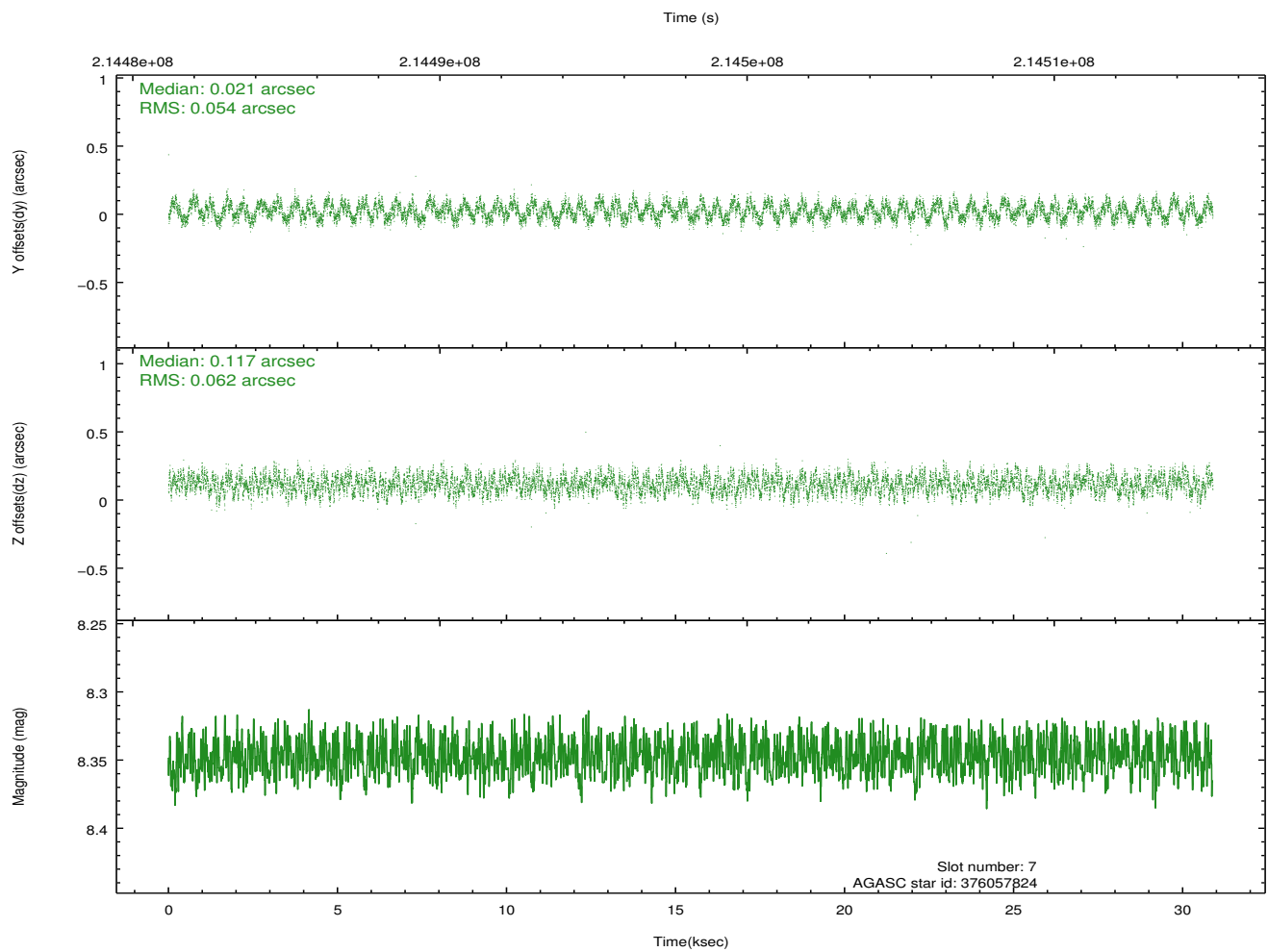
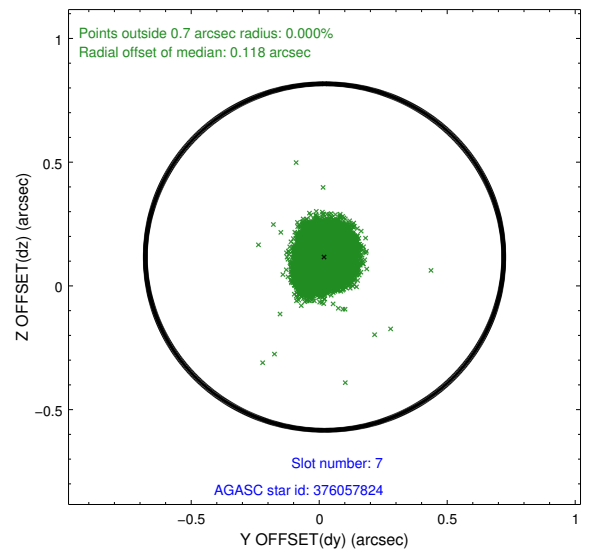
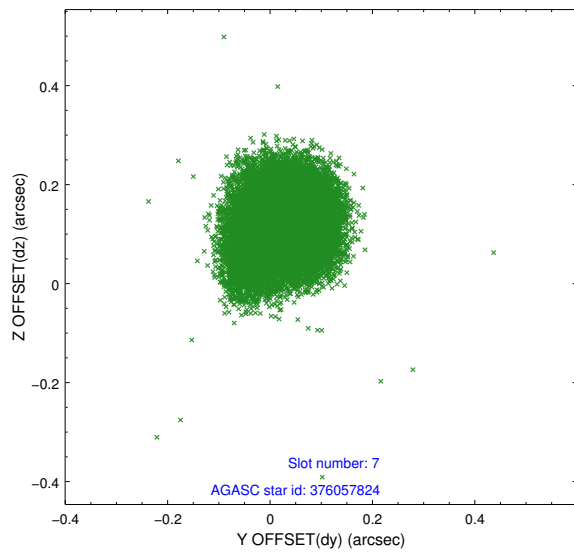
2.4.3 Slot 5



2.4.4 Slot 6

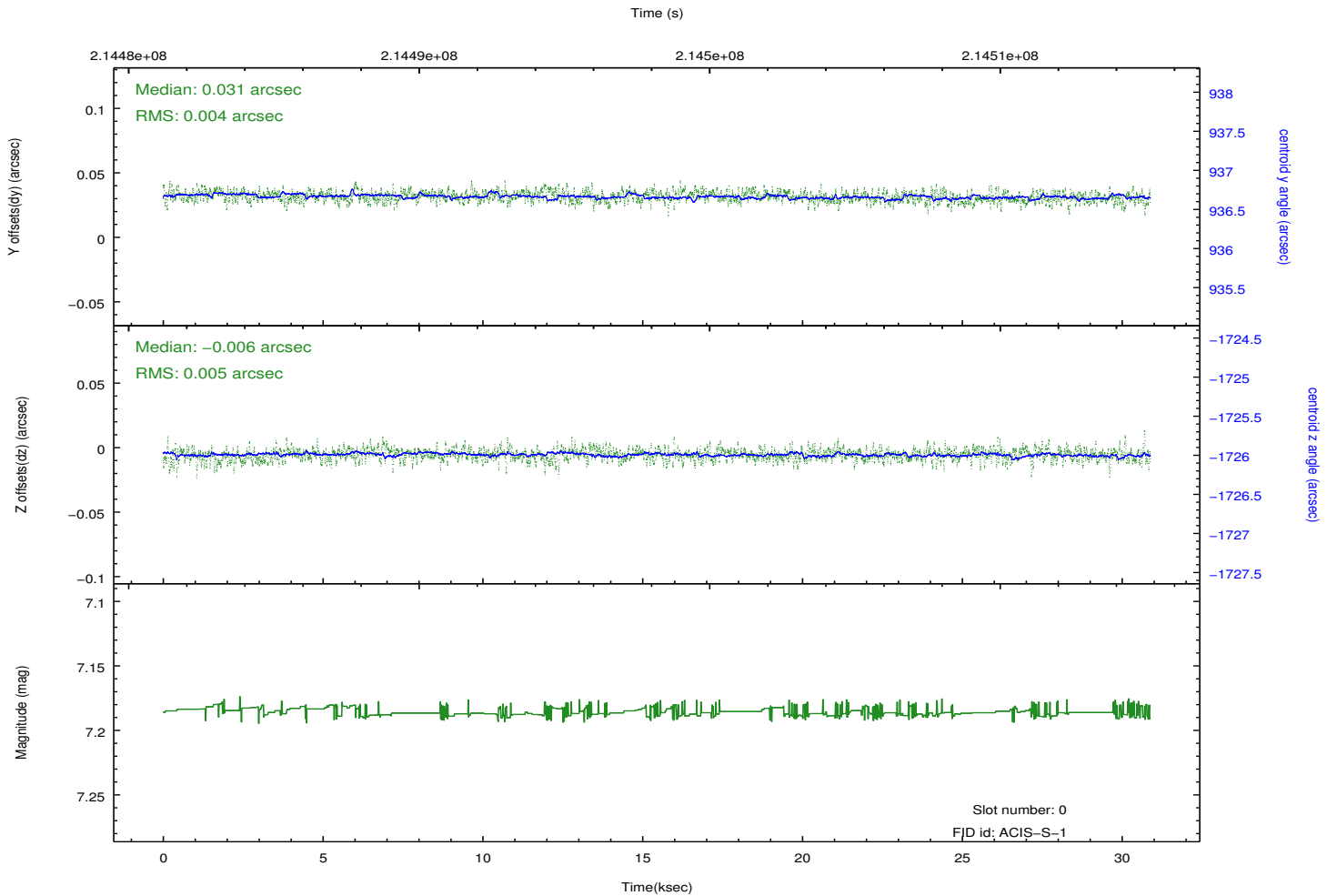
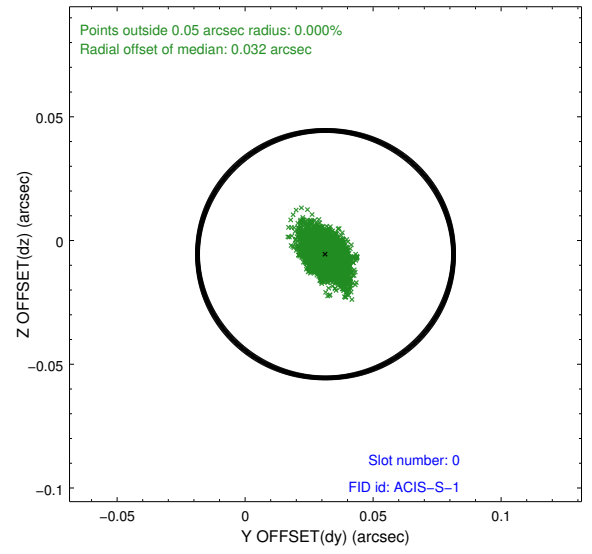
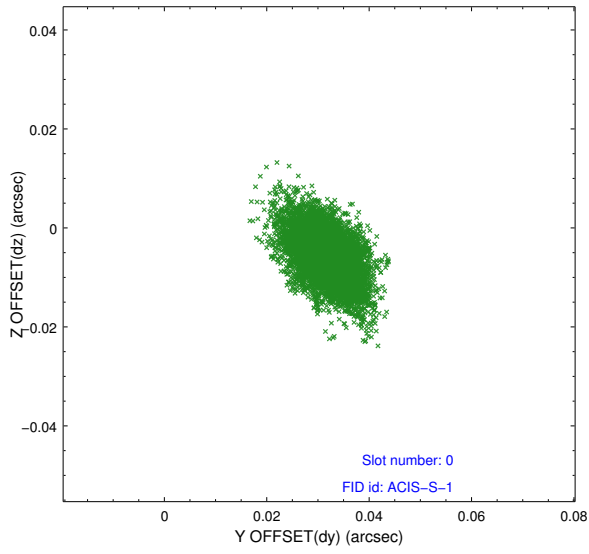


2.4.5 Slot 7

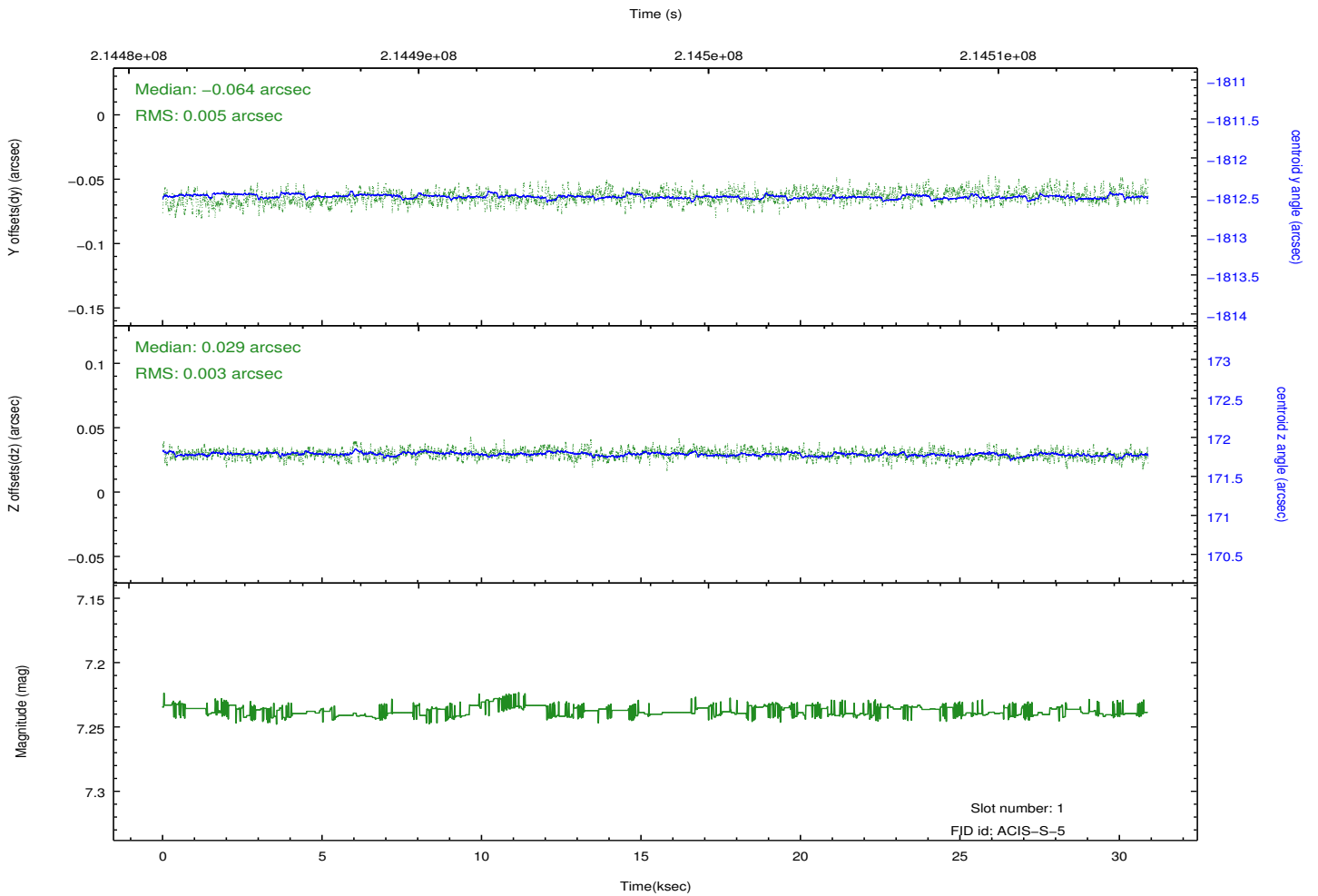
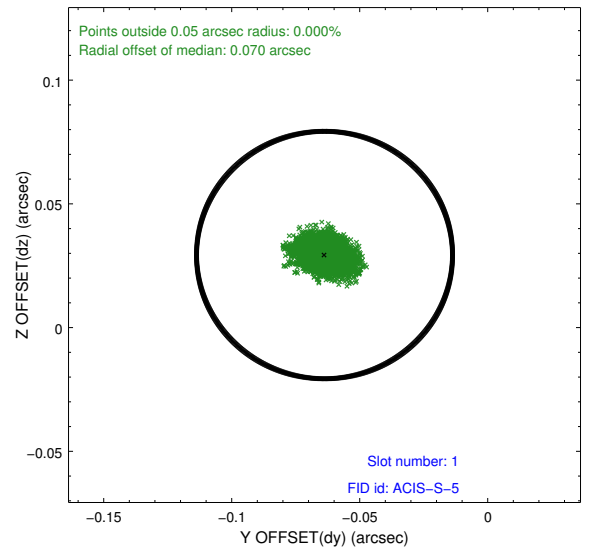
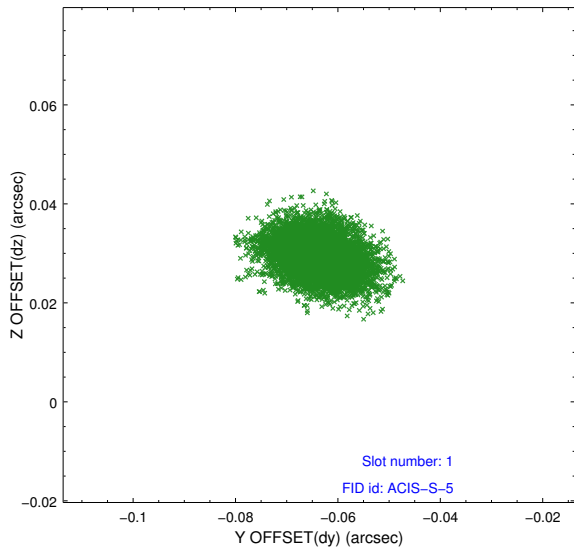


2.5 FID Slots

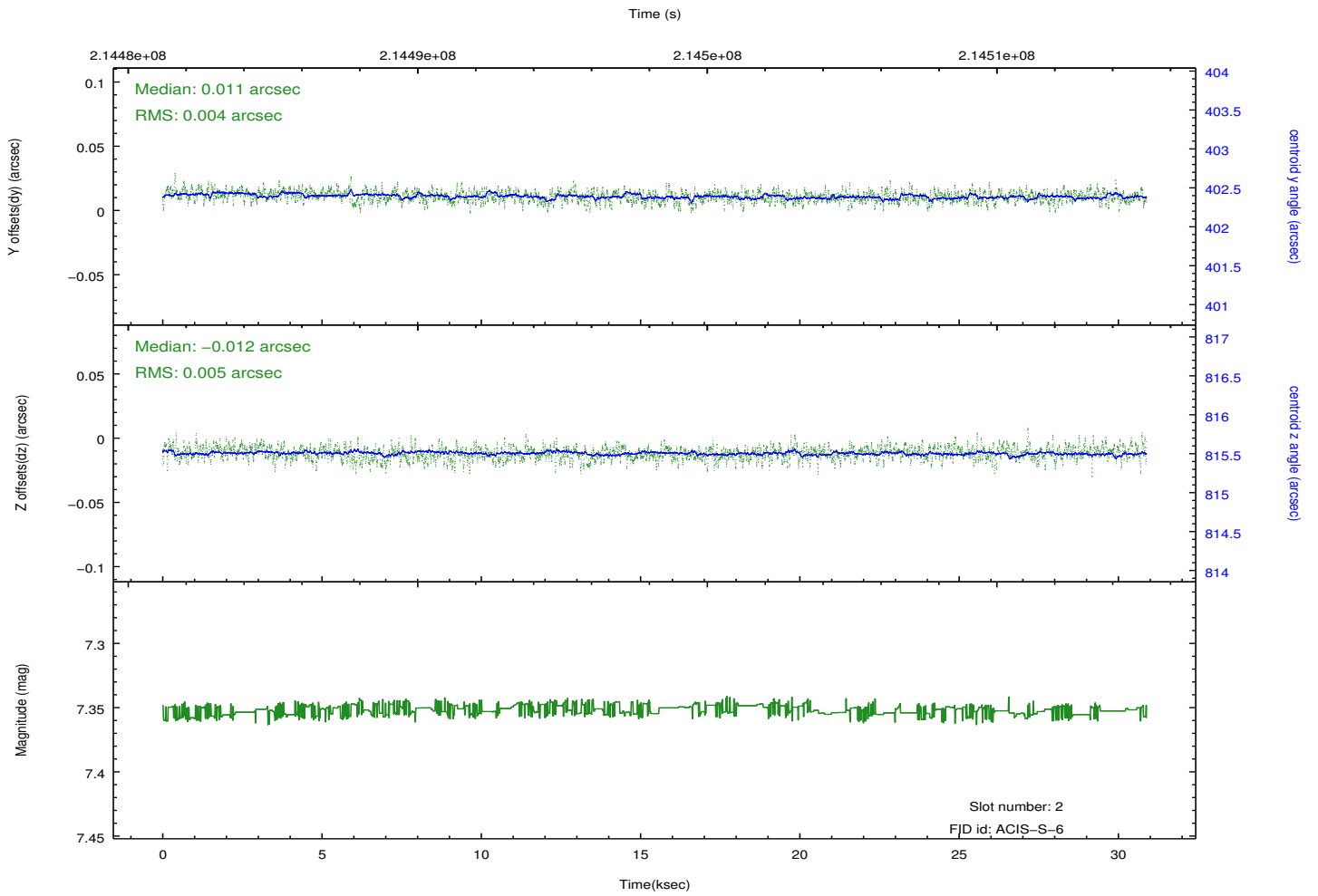
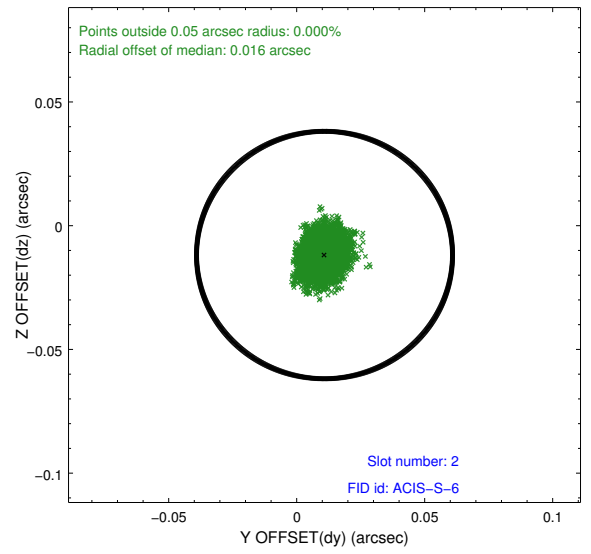
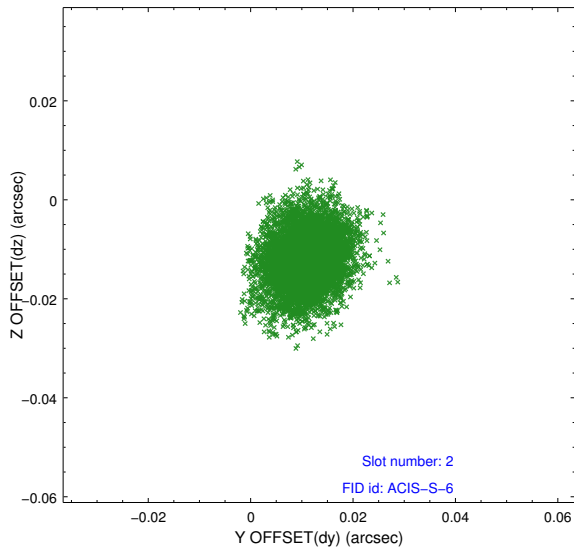
2.5.1 Slot 0



2.5.2 Slot 1



2.5.3 Slot 2



A Summary

A.1 Status

V&V Scientist	Jen Lauer
V&V Date (YYYY-MM-DD)	2013.01.03
V&V Edition	1
V&V Disposition and Status	OK
V&V Charge Time	30.476

A.2 Comments