

# V&V Reference Report

## L2 ASCDS Version : 8.5.1.1

Observation 5373 - L2 Version 3  
Chandra X-Ray Center

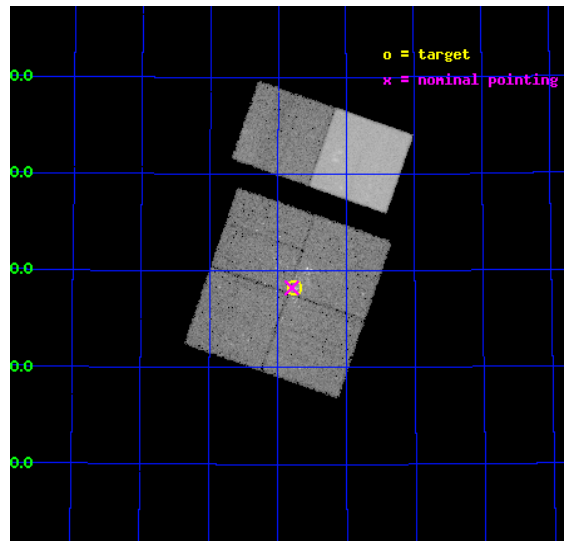
L2 Processing Date : Dec 20 2012

## Contents

<b>1</b>	<b>Front</b>	<b>2</b>
<b>2</b>	<b>OBI</b>	<b>3</b>
2.1	OBI . . . . .	3
2.1.1	Images . . . . .	3
2.1.2	Bias . . . . .	3
2.1.3	Parameters . . . . .	4
2.1.4	Events . . . . .	4
2.2	Compared Parameters . . . . .	5
2.3	Aspect . . . . .	6
2.4	Star Slots . . . . .	9
2.4.1	Slot 3 . . . . .	9
2.4.2	Slot 4 . . . . .	10
2.4.3	Slot 5 . . . . .	11
2.4.4	Slot 6 . . . . .	12
2.4.5	Slot 7 . . . . .	13
2.5	FID Slots . . . . .	14
2.5.1	Slot 0 . . . . .	14
2.5.2	Slot 1 . . . . .	15
2.5.3	Slot 2 . . . . .	16
<b>A</b>	<b>Summary</b>	<b>17</b>
A.1	Status . . . . .	17
A.2	Comments . . . . .	17

# 1 Front

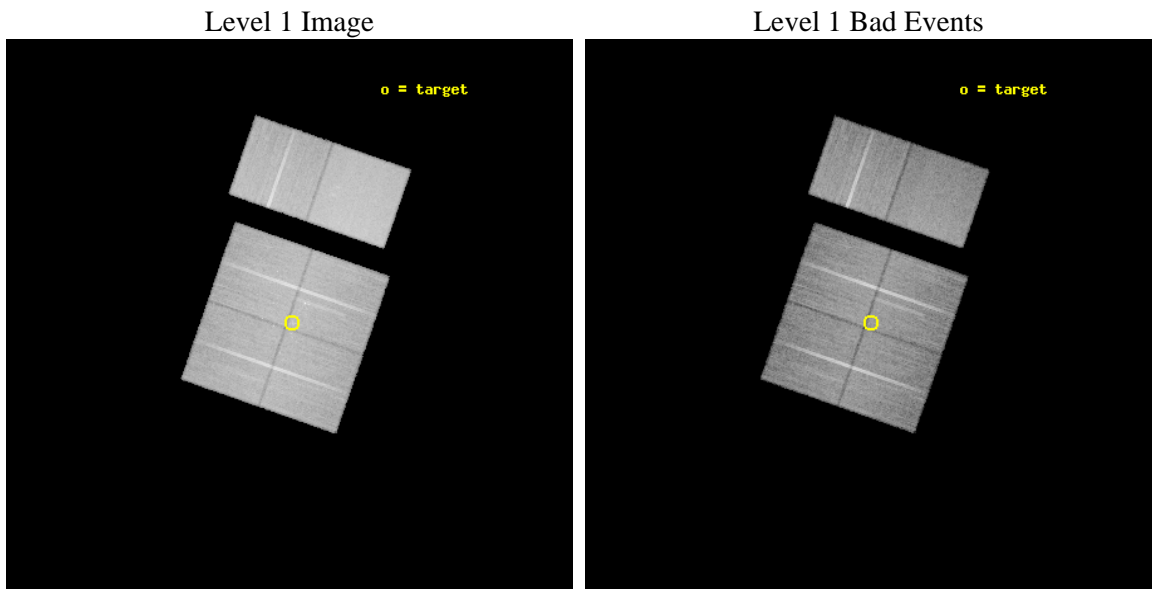
seq_num	200308	Sequence number
obs_id	5373	Observation id
title	Alternate: A Search for X-ray Activity from a Mass-Accreting Young Massive Star in NGC7538 with ACIS-I	Proposal title
observer	Professor Gordon Garmire	Principal investigator
object	NGC7538	Source name
dtcycle	0	&#160
cycle	P	events from which exps? Prim/Second/Both
ra_targ	348.439583	Observer's specified target RA [deg]
dec_targ	61.471278	Observer's specified target Dec [deg]
ra_nom	348.44930816834	Nominal RA [deg]
dec_nom	61.470978848113	Nominal Dec [deg]
roll_nom	19.176974981738	Nominal Roll [deg]
revision	3	Processing version of data
ontime	29955.158928126	Sum of GTIs [s]
livetime	29575.848668947	Livetime [s]
ontime0	29955.158898205	Sum of GTIs [s]
ontime1	29958.399888396	Sum of GTIs [s]
ontime2	29958.399888396	Sum of GTIs [s]
ontime3	29955.158928126	Sum of GTIs [s]
ontime6	29955.158898234	Sum of GTIs [s]
ontime7	29958.399888396	Sum of GTIs [s]
l2events	246573	Number of level 2 events



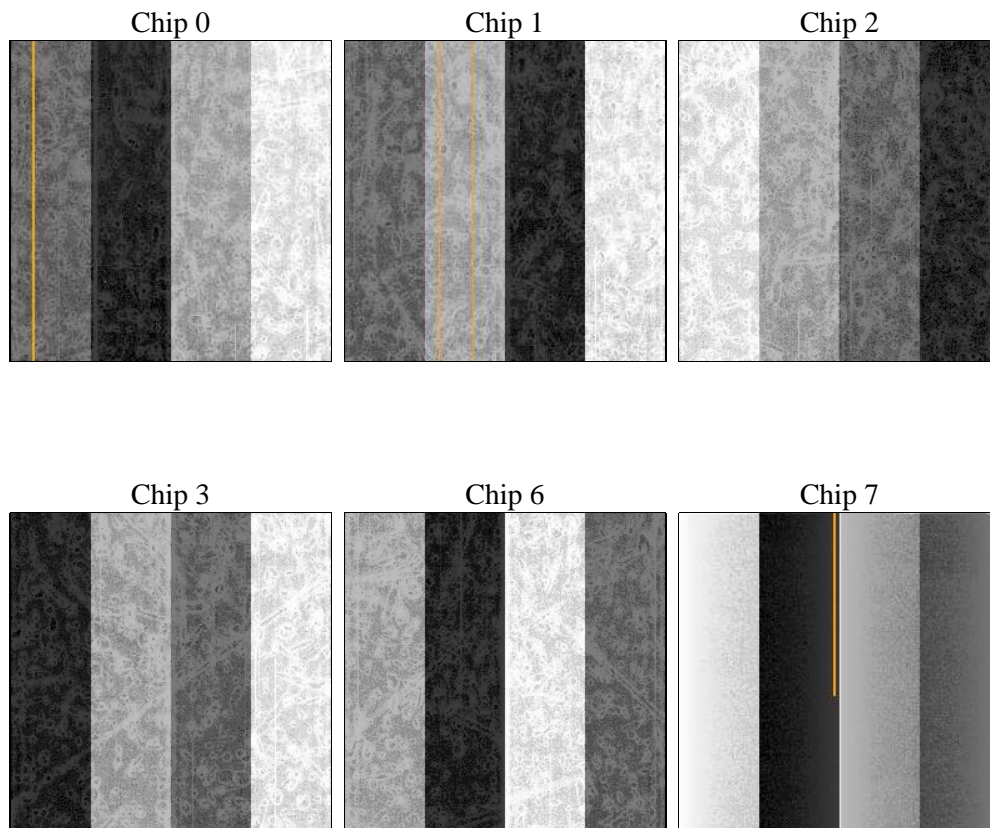
## 2 OBI

### 2.1 OBI

#### 2.1.1 Images



#### 2.1.2 Bias



### 2.1.3 Parameters

obi_num	0	Obi number	sched_exp_time	30000.000000	[s] Scheduled observation exposure time
ascdsver	8.5.1.1	Processing system revision	ontime	29955.158928126	Sum of GTIs [s]
caldbver	4.5.5	&#160	ontime0	29955.158898205	Sum of GTIs [s]
date	2012-12-20T23:31:58	Date and time of file creation	ontime1	29958.399888396	Sum of GTIs [s]
revision	3	Processing version of data	ontime2	29958.399888396	Sum of GTIs [s]
			ontime3	29955.158928126	Sum of GTIs [s]
			ontime6	29955.158898234	Sum of GTIs [s]
			ontime7	29958.399888396	Sum of GTIs [s]
			l1events	1376076	Number of level 1 events

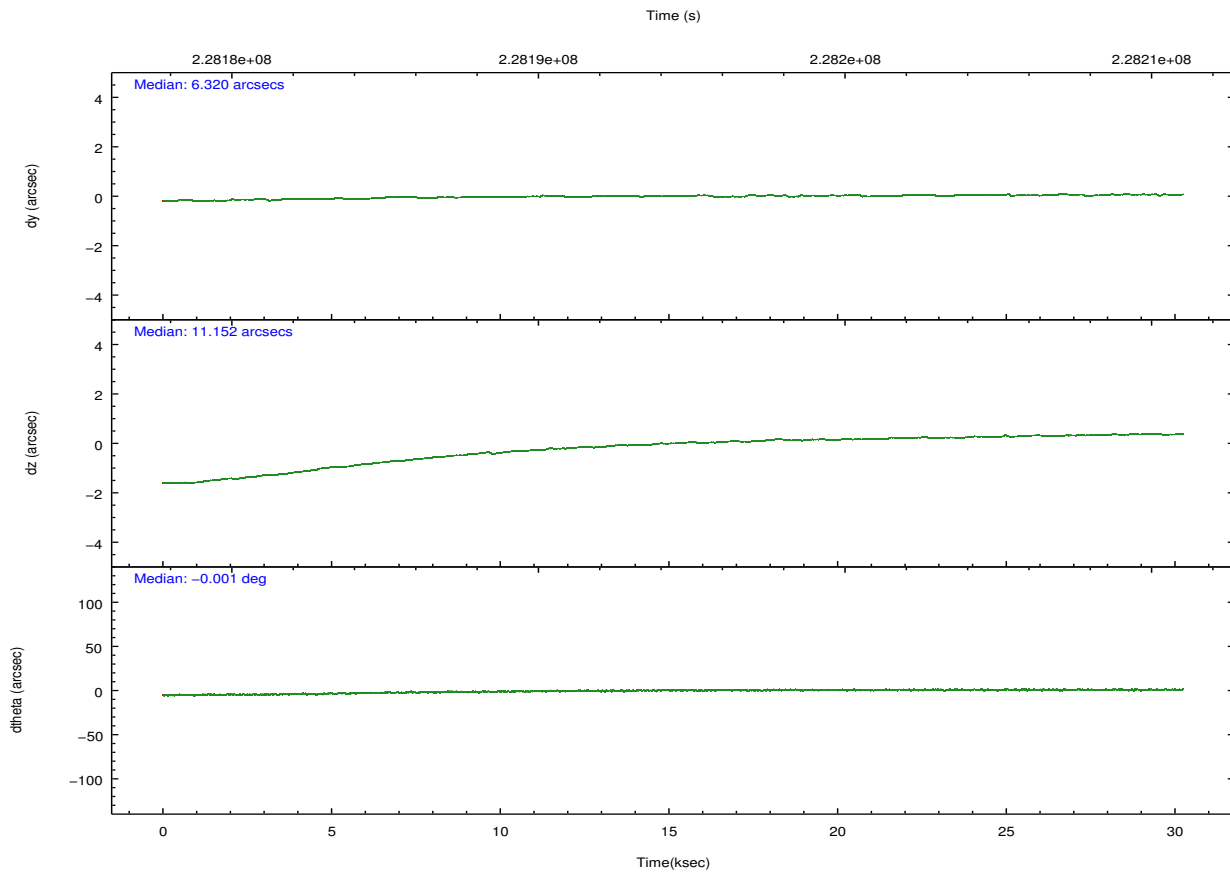
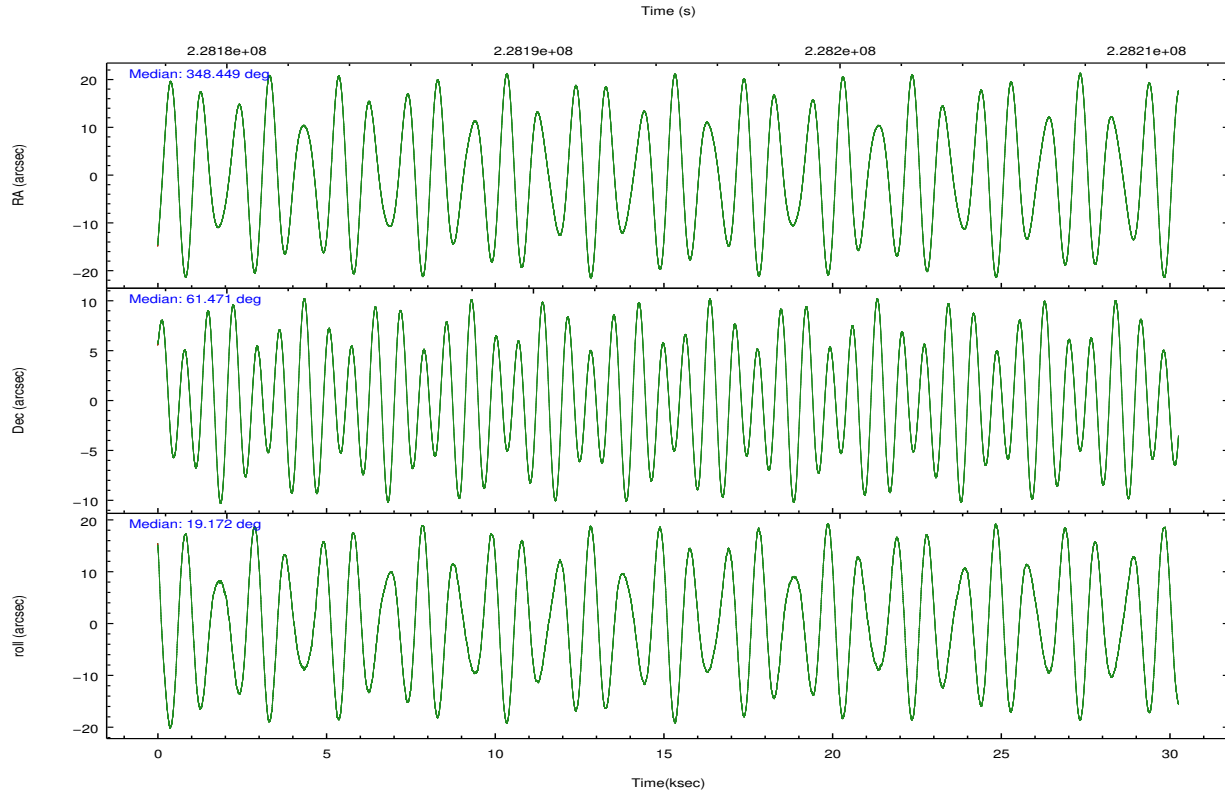
### 2.1.4 Events

	ccd 0	ccd 1	ccd 2	ccd 3	ccd 6	ccd 7		ccd 0	ccd 1	ccd 2	ccd 3	ccd 6	ccd 7
level 1 events	199282	202229	220296	216853	231716	305700	grade 0 events	12173	11401	13042	13628	10842	11213
rejected events	171489	173377	192230	188061	204371	178315		6%	5%	5%	6%	4%	3%
rejected %	86%	85%	87%	86%	88%	58%	grade 1 events	124	111	152	145	130	285
								0%	0%	0%	0%	0%	0%
							grade 2 events	5752	6355	5674	5280	5924	25556
								2%	3%	2%	2%	2%	8%
							grade 3 events	2611	2783	2417	2652	2525	11055
								1%	1%	1%	1%	1%	3%
							grade 4 events	2567	2747	2481	2478	2504	11243
								1%	1%	1%	1%	1%	3%
							grade 5 events	9045	9560	8660	9954	10565	28813
								4%	4%	3%	4%	4%	9%
							grade 6 events	4690	5568	4455	4758	5552	68339
								2%	2%	2%	2%	2%	22%
							grade 7 events	162320	163704	183415	177958	193674	149196
								81%	80%	83%	82%	83%	48%

## 2.2 Compared Parameters

Parameter	Planned	Actual	Parameter	Planned	Actual
Instrument	ACIS	ACIS	Obspar format version number	7	7
Detector	ACIS-012367	ACIS-012367	Obspar file type	PREDICTED	ACTUAL
Grating	NONE	NONE	Obspar update status	NONE	UPDATED
Data mode	VFAINT	VFAINT	Number of optional ACIS chips dropped	0	0
Observation mode	POINTING	POINTING	On-chip summing requested	N	N
[deg] Pointing RA	348.411995	348.449308168338	Subarray requested	NONE	NONE
[deg] Pointing Dec	61.450163	61.47097884811289	Alternating exposures requested	N	N
[deg] Pointing Roll	19.001065	19.17697498173826	[s] Primary exposure time	0.000000	3.2
[mm] SIM focus pos	-0.782348	-0.7809083437167272			
[mm] SIM defocus	0	0.001439871863259334			
[mm] SIM translation stage pos	-233.592463	-233.5874344608287			
[mm] SIM translation stage offset	0	-0.005018542100998502			
[s] Observation start time (MET)	228179516.184000	228178520.42757			
Observation start date	2005-03-25T23:10:52	2005-03-25T22:55:20			
[s] Observation end time (MET)	228209516.184000	228210183.19151			
Observation end date	2005-03-26T07:30:52	2005-03-26T07:43:03			
Read mode	TIMED	TIMED			

## 2.3 Aspect

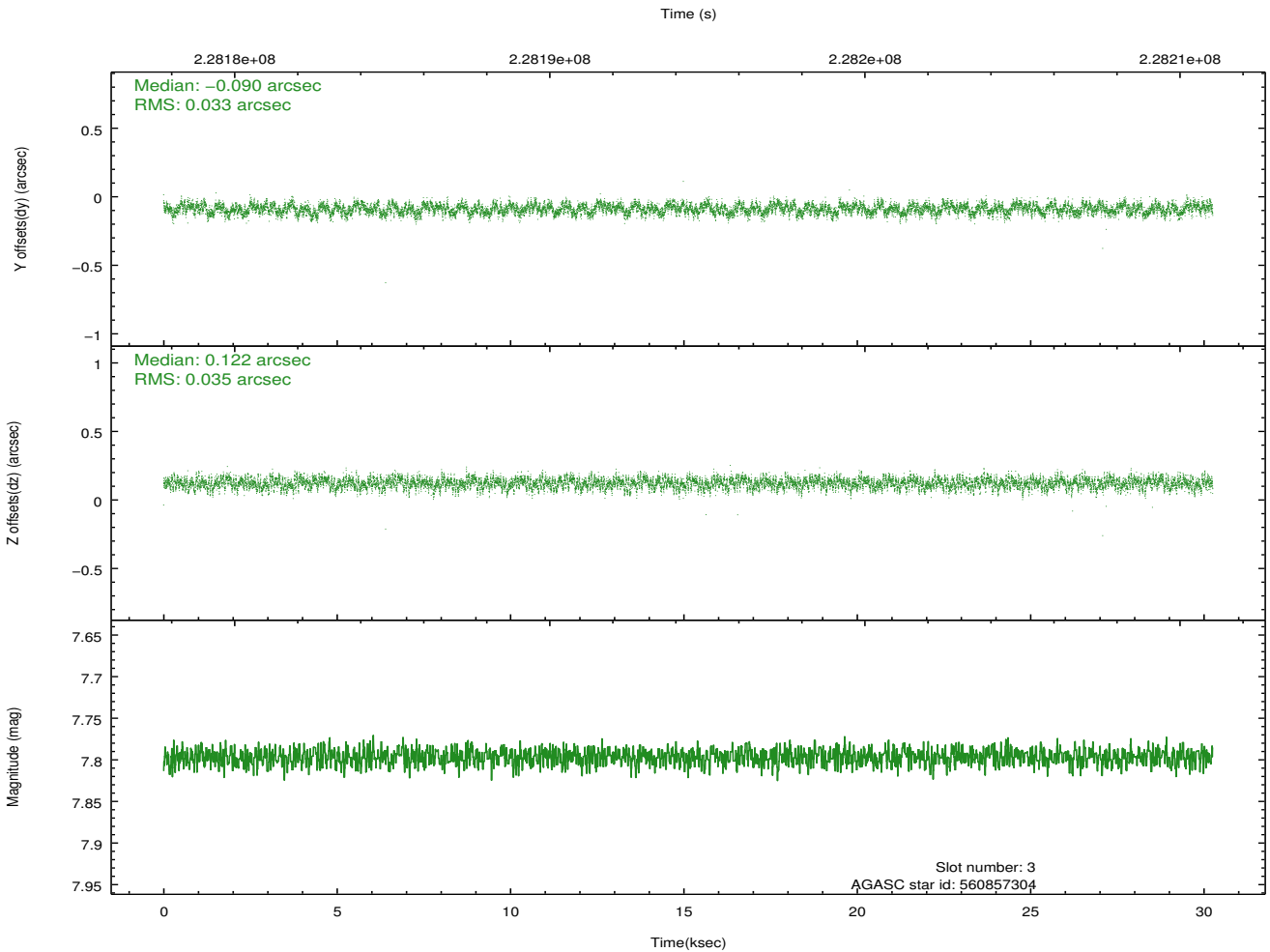
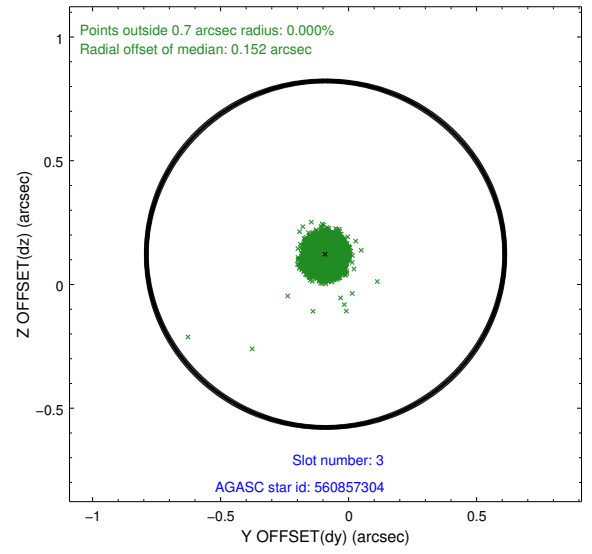
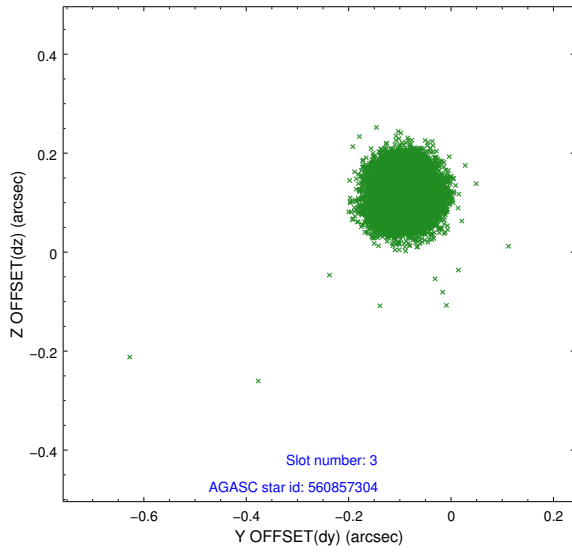


### Slot Statistics

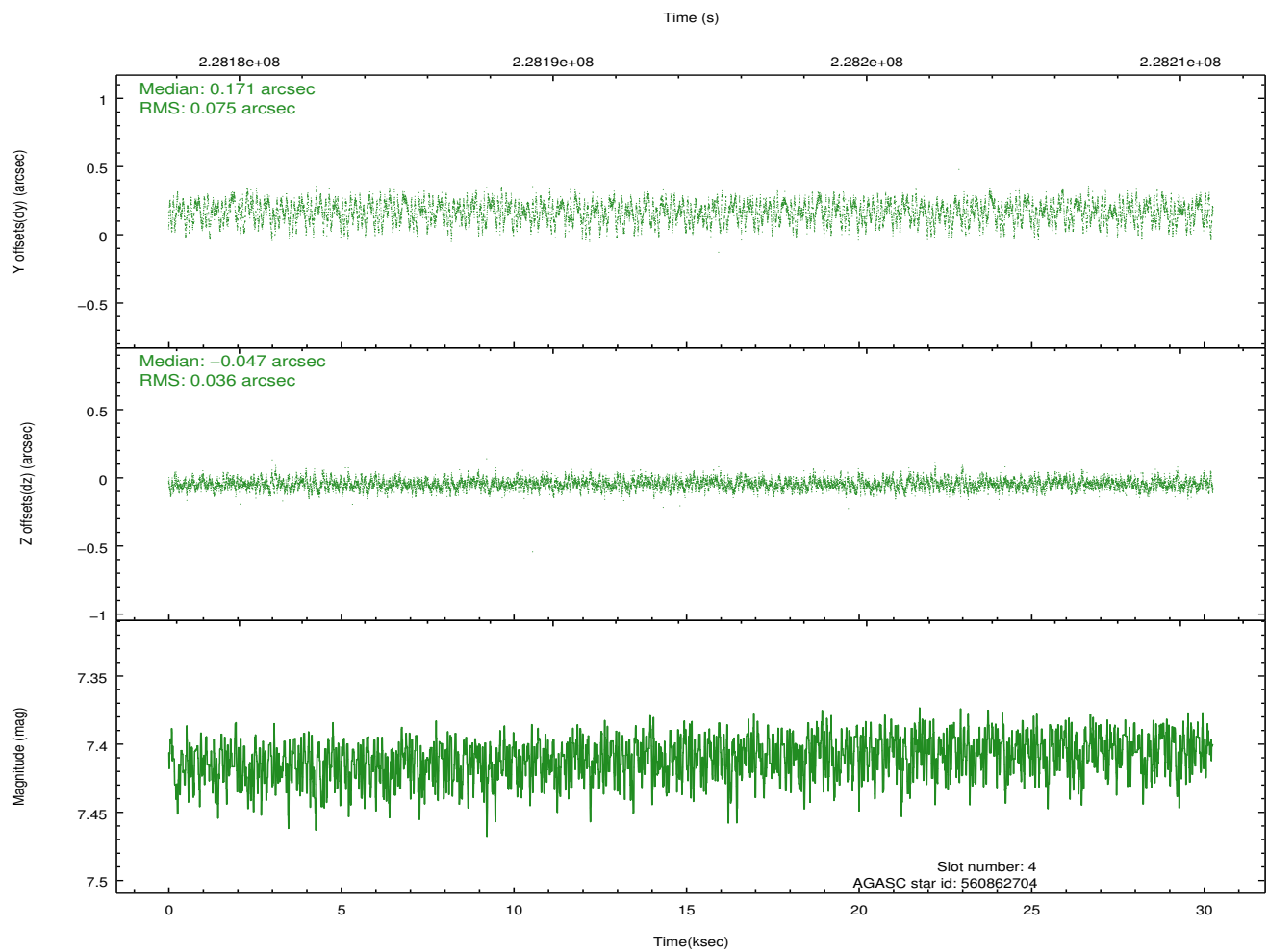
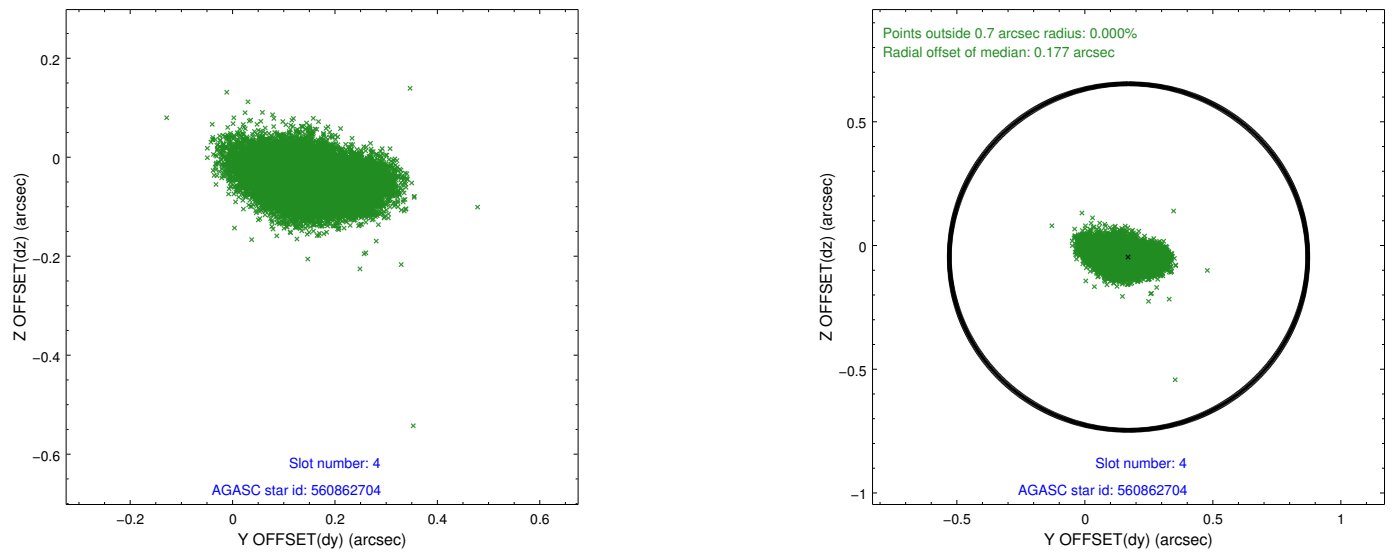
slot	status	id	mag	n_pts	med_dy	med_dz	dr1	dr2	ra	dec	mean_y	mean_z
0	FID	ACIS-I-1	7.24	7381	0.033	-0.016	0.014	0.057	0.000000	0.000000	933.41	-834.42
1	FID	ACIS-I-5	7.23	7379	-0.160	0.050	0.012	0.027	0.000000	0.000000	-1814.81	1063.13
2	FID	ACIS-I-6	7.25	7381	0.036	0.035	0.013	0.036	0.000000	0.000000	398.93	1707.67
3	GUIDE	560857304	7.80	14760	-0.090	0.122	0.051	0.081	347.545364	61.241621	-1660.33	-211.57
4	GUIDE	560862704	7.41	14760	0.171	-0.047	0.088	0.145	350.002707	61.149838	2271.73	-1889.77
5	GUIDE	560864232	8.46	14758	-0.007	0.016	0.074	0.124	347.334108	61.656376	-1495.07	1316.03
6	GUIDE	560864864	8.98	14756	-0.026	-0.026	0.067	0.111	347.395288	61.465785	-1630.36	635.41
7	GUIDE	560858256	8.09	14756	-0.047	-0.066	0.057	0.092	348.871647	61.865893	1225.66	1163.92

## 2.4 Star Slots

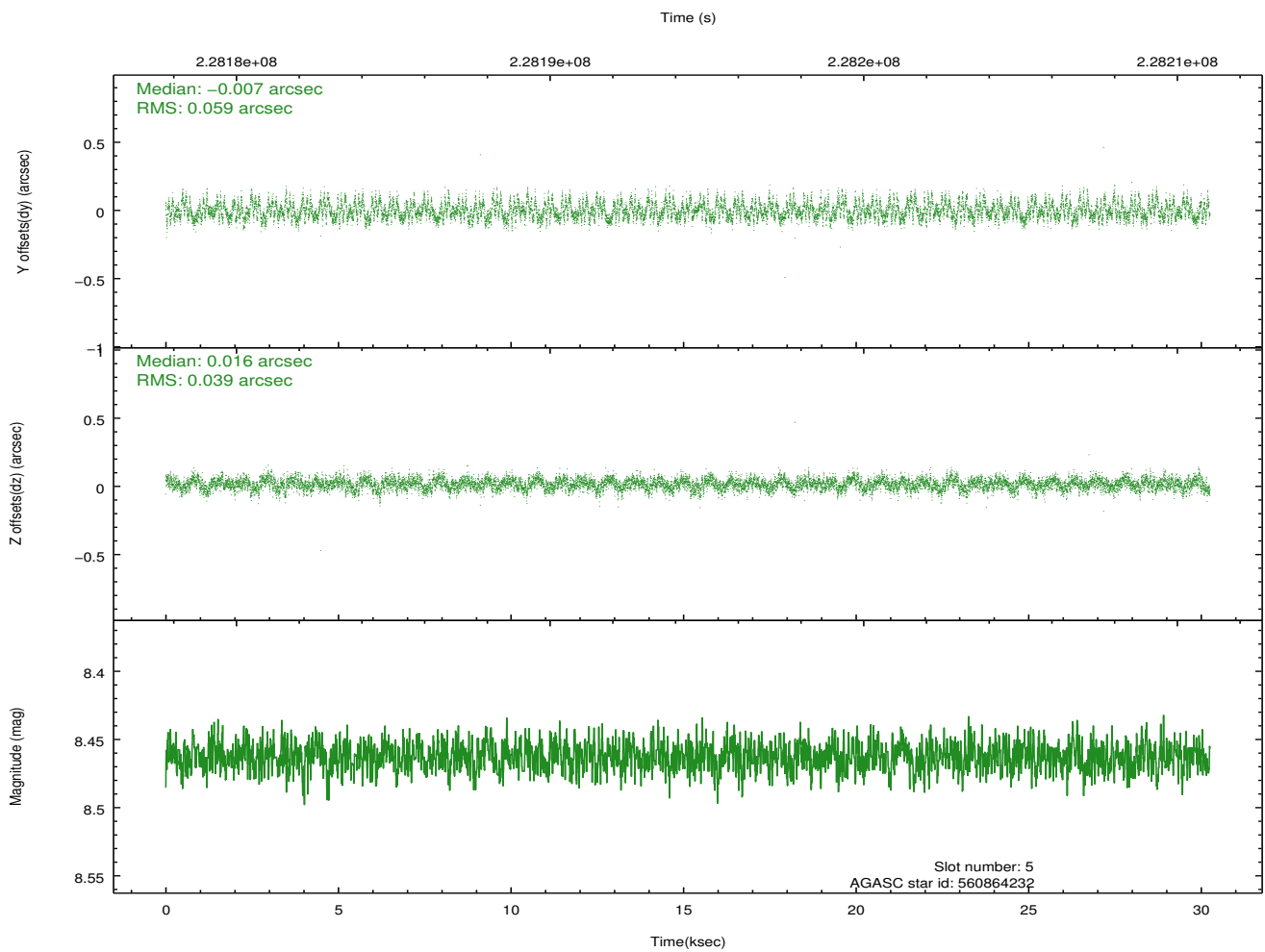
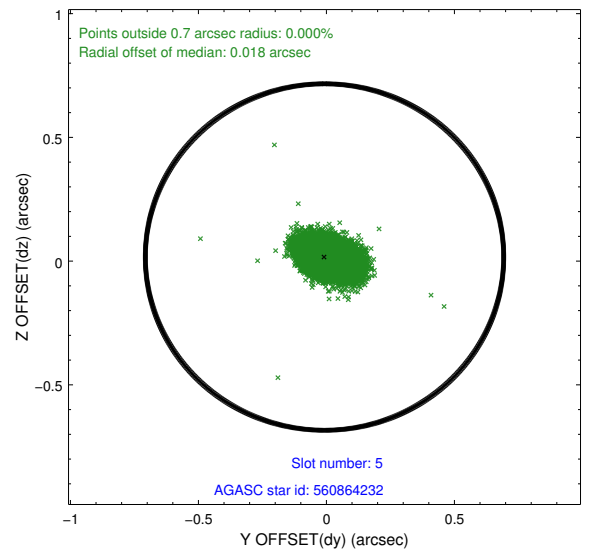
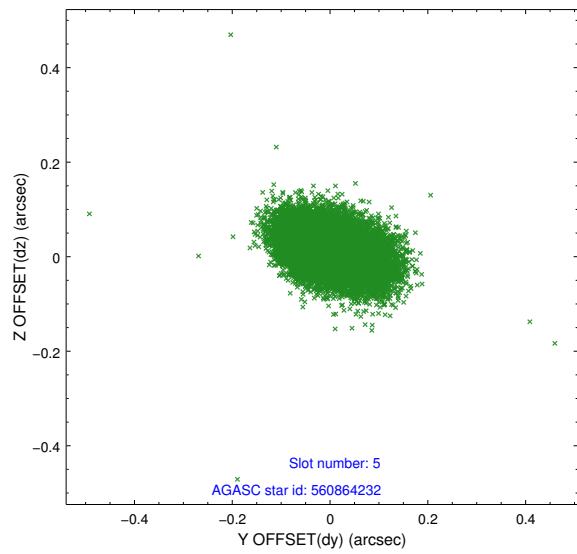
### 2.4.1 Slot 3



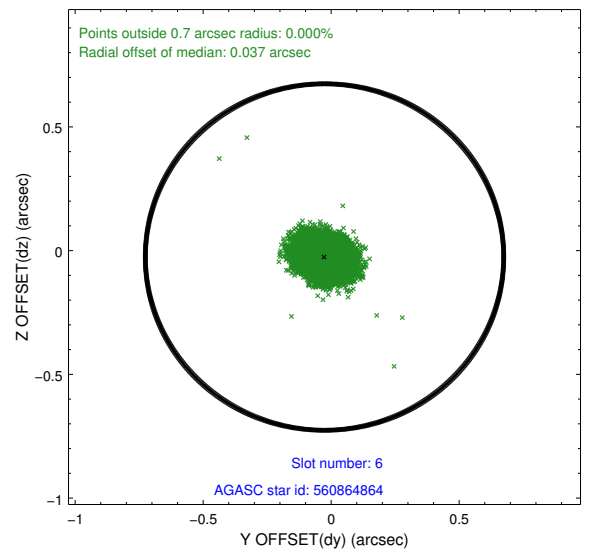
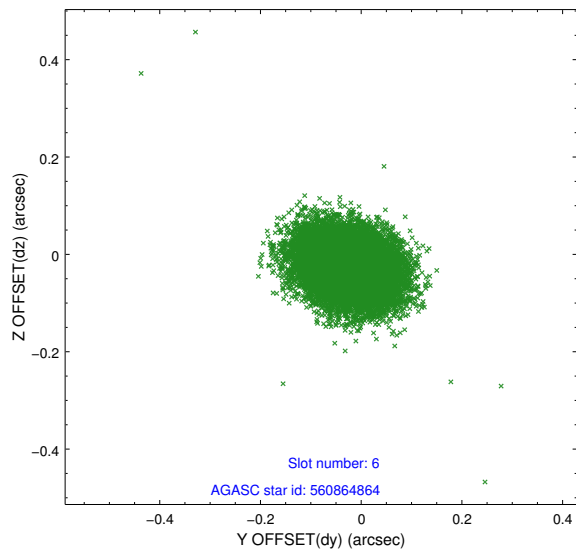
## 2.4.2 Slot 4



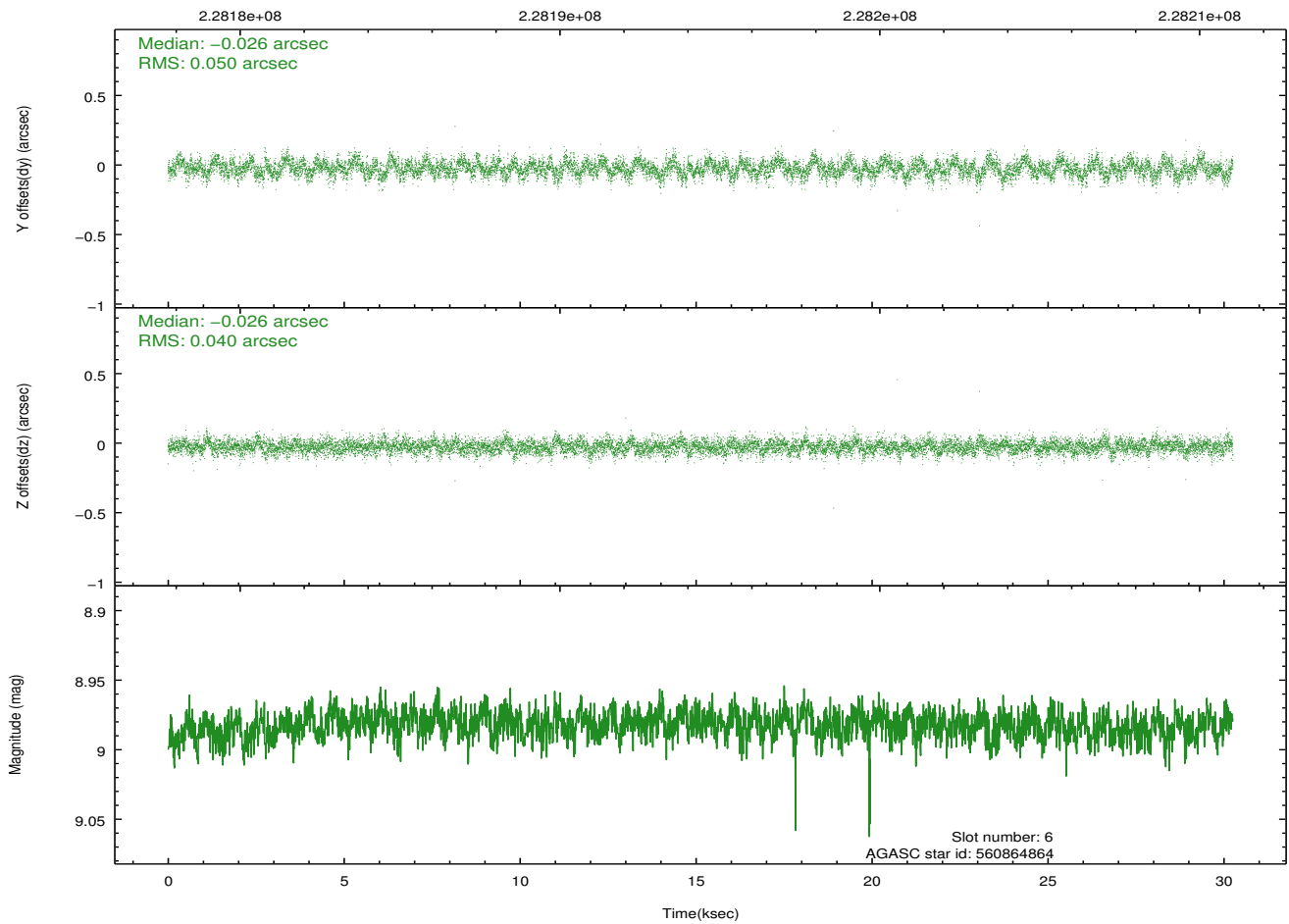
### 2.4.3 Slot 5



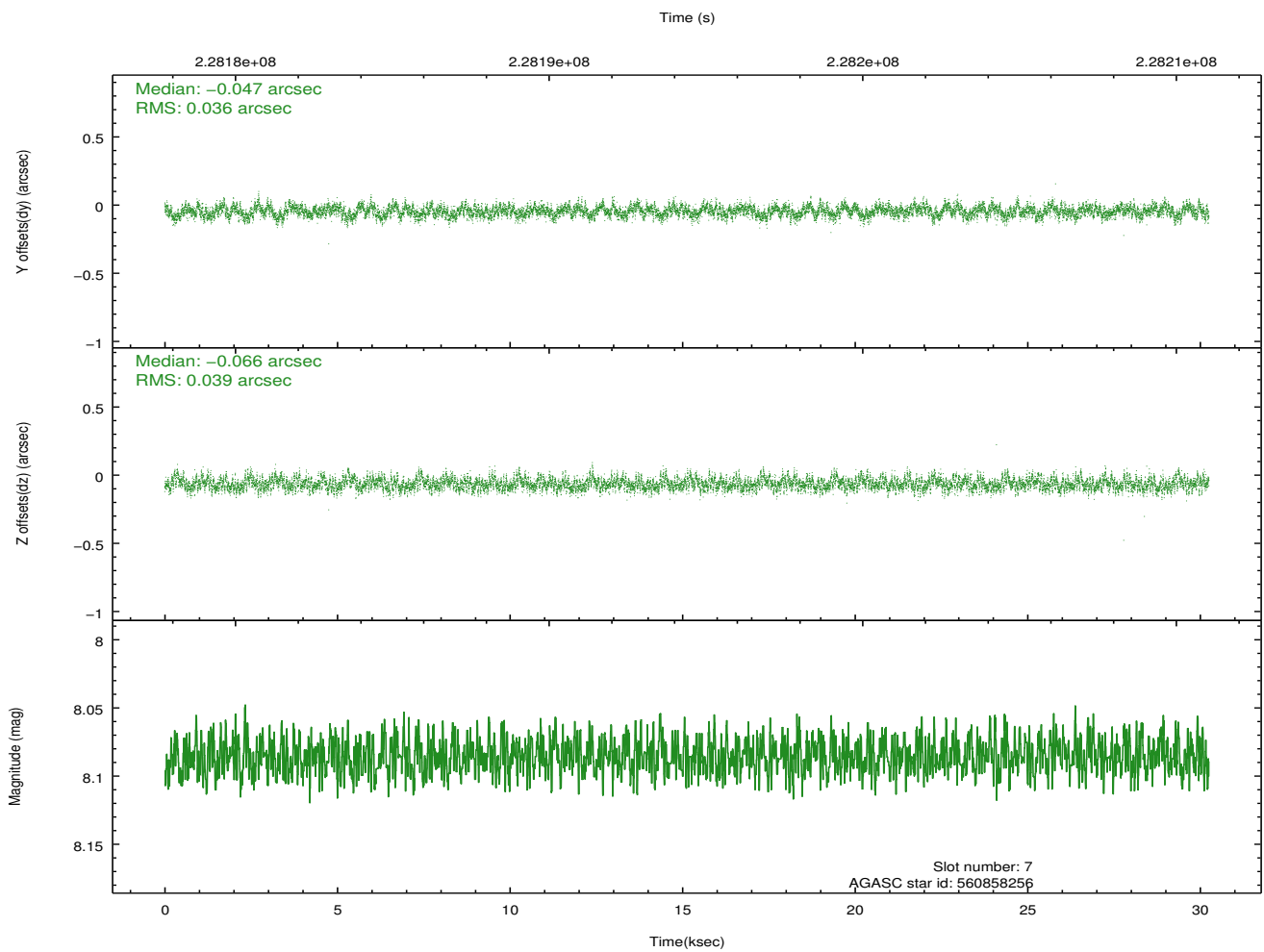
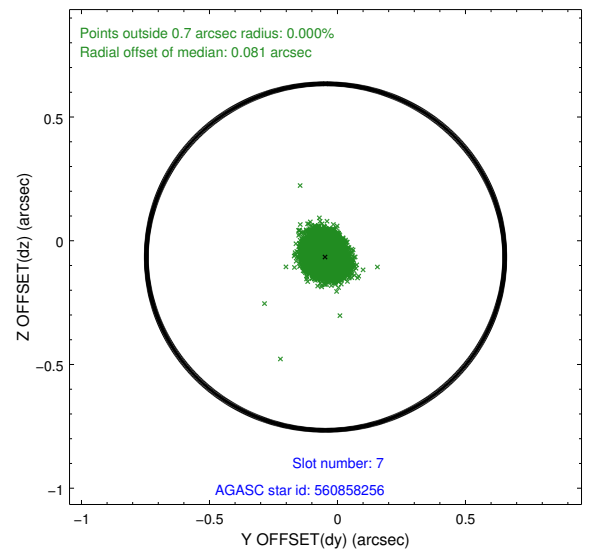
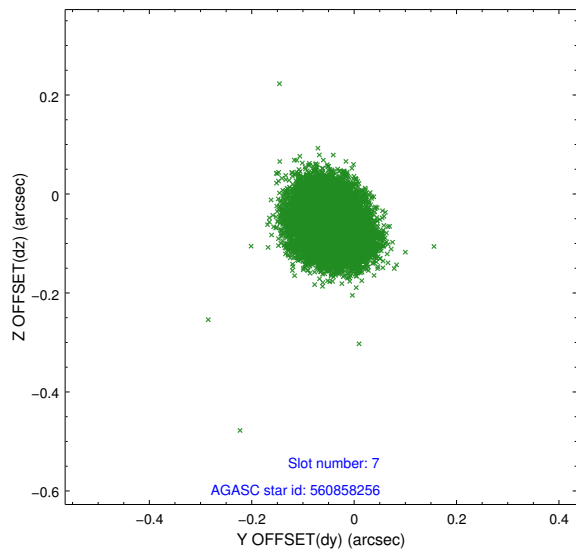
## 2.4.4 Slot 6



Time (s)

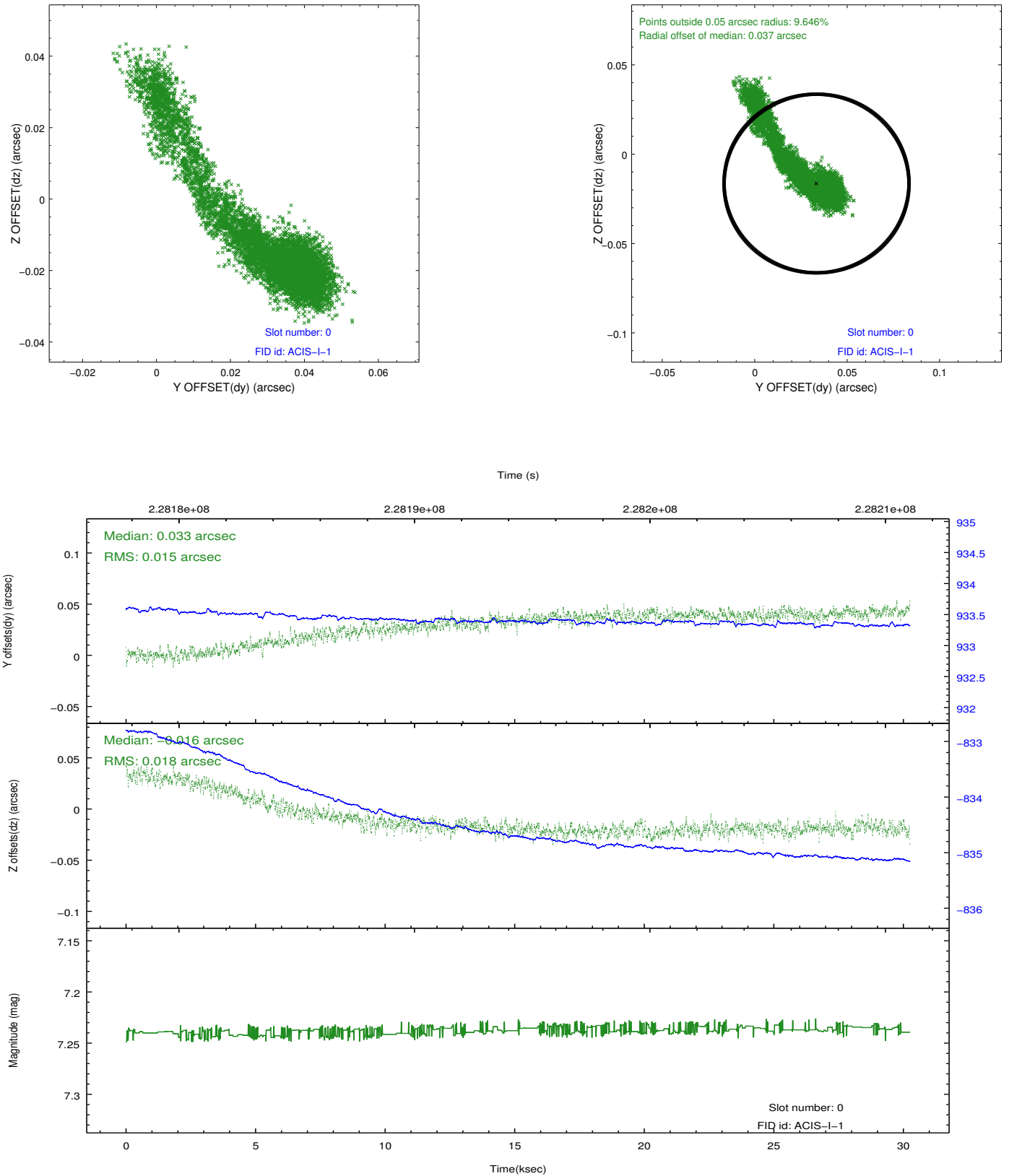


## 2.4.5 Slot 7

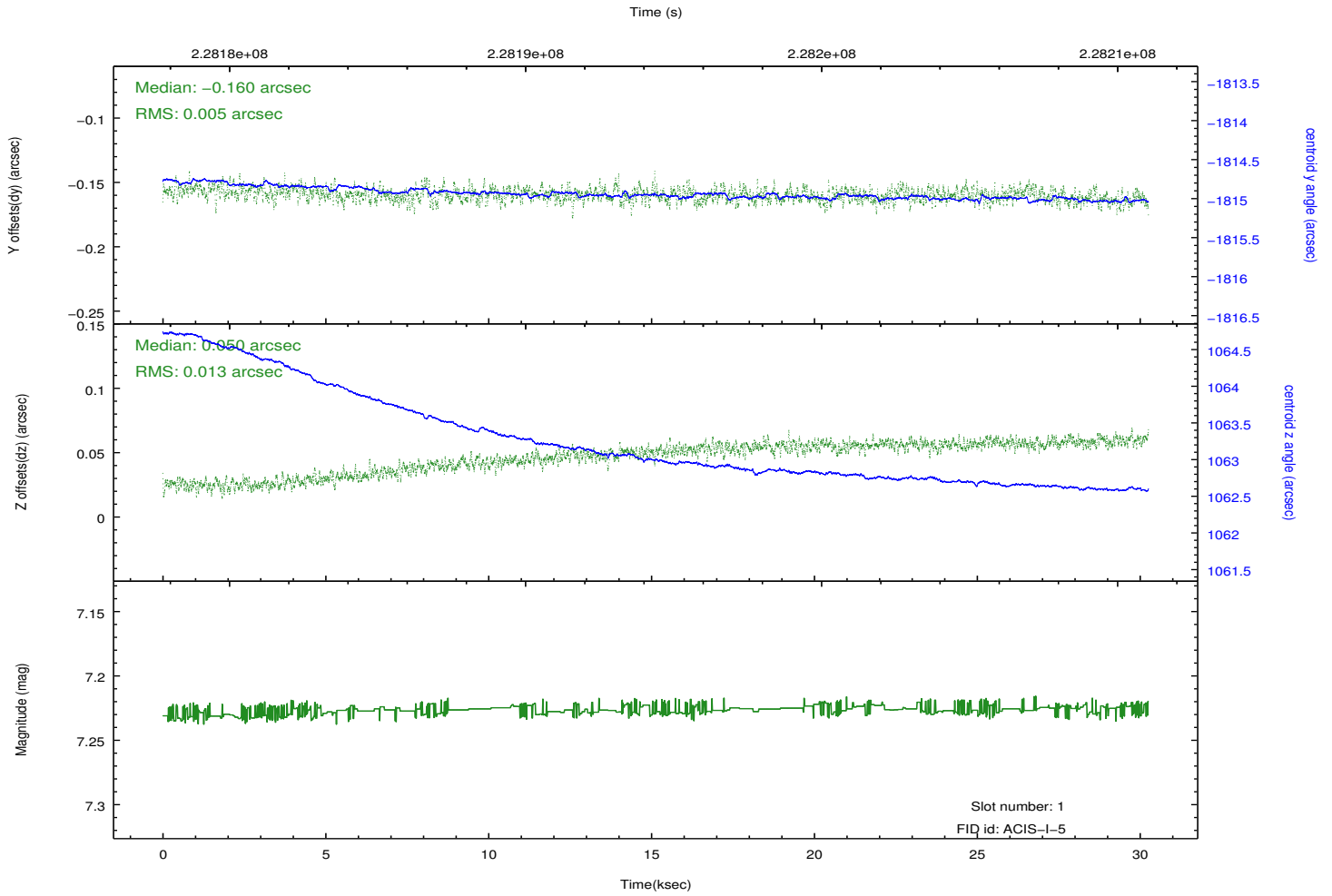
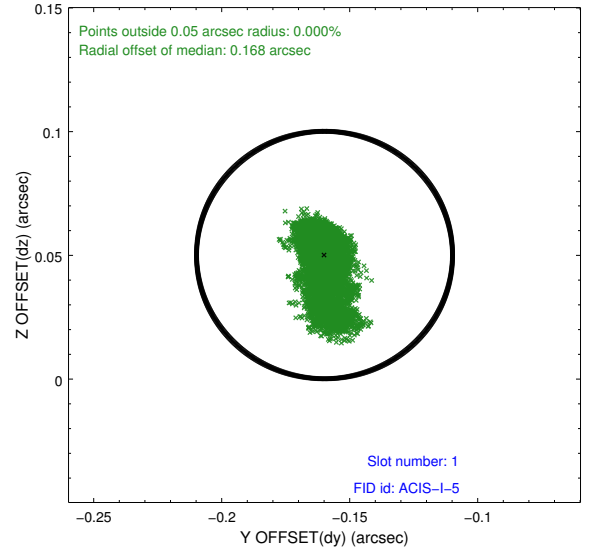
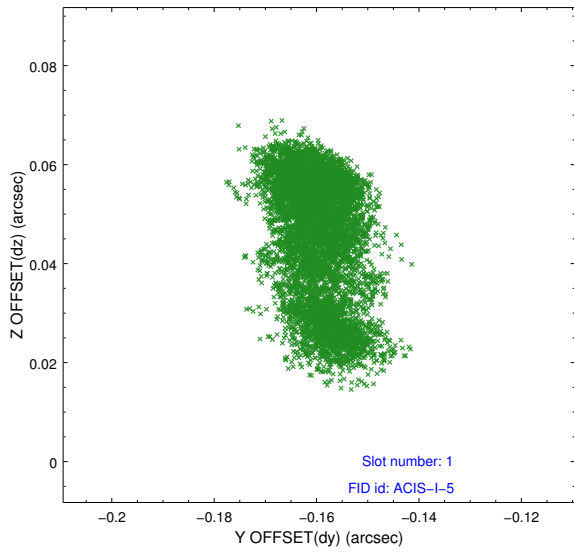


## 2.5 FID Slots

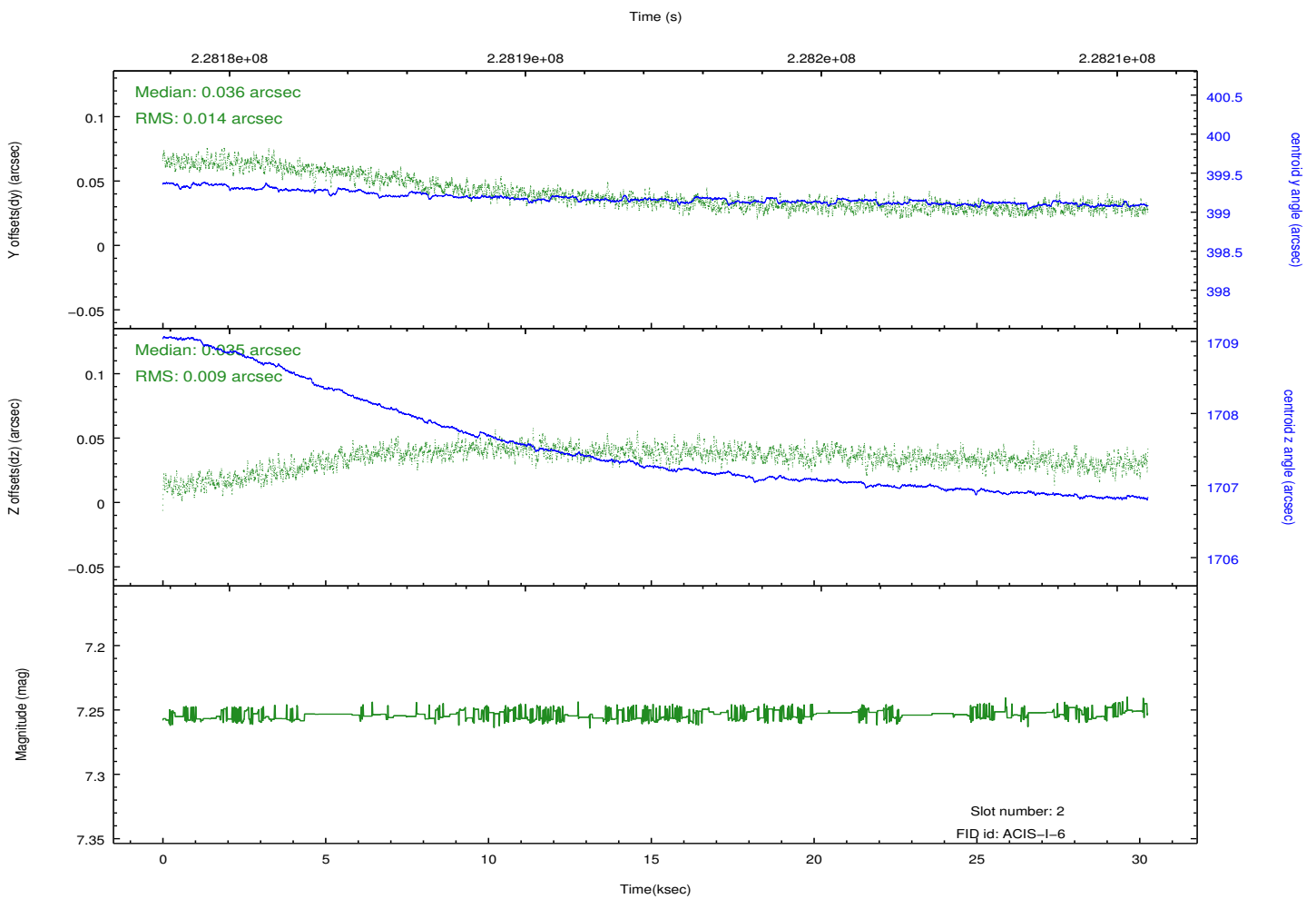
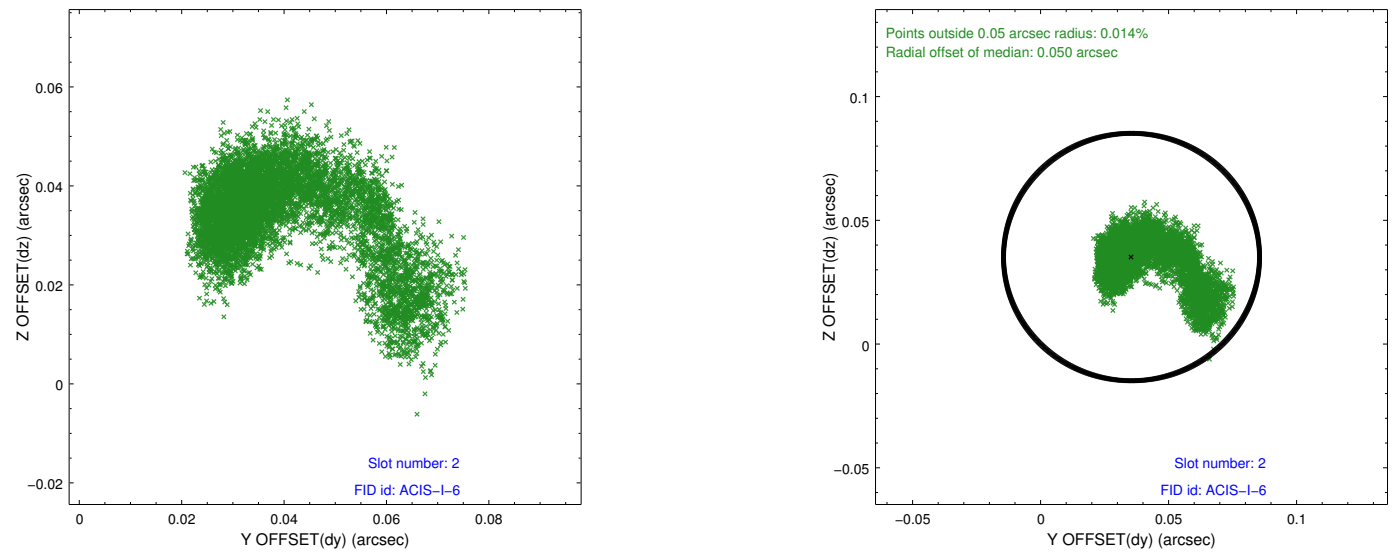
### 2.5.1 Slot 0



## 2.5.2 Slot 1



### 2.5.3 Slot 2



# A Summary

## A.1 Status

V&V Scientist	Jen Lauer
V&V Date (YYYY-MM-DD)	2013.01.14
V&V Edition	1
V&V Disposition and Status	OK
V&V Charge Time	29.95515

## A.2 Comments