

# V&V Reference Report

## L2 ASCDS Version : 8.5.1.1

Observation 5383 - L2 Version 3  
Chandra X-Ray Center

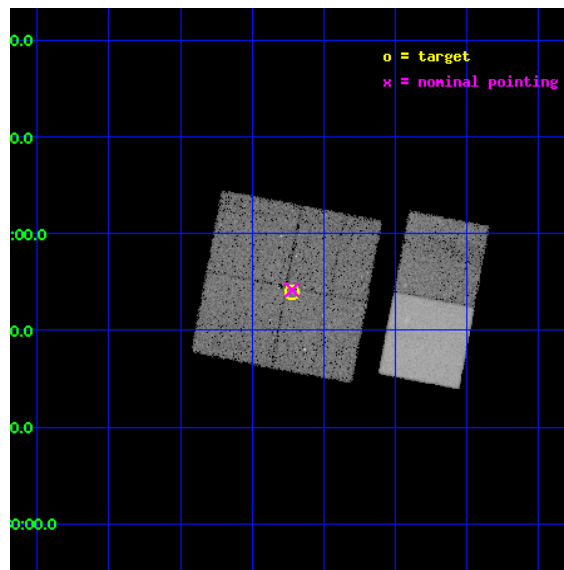
L2 Processing Date : Dec 27 2012

## Contents

<b>1</b>	<b>Front</b>	<b>2</b>
<b>2</b>	<b>OBI</b>	<b>3</b>
2.1	OBI . . . . .	3
2.1.1	Images . . . . .	3
2.1.2	Bias . . . . .	3
2.1.3	Parameters . . . . .	4
2.1.4	Events . . . . .	4
2.2	Compared Parameters . . . . .	5
2.3	Aspect . . . . .	6
2.4	Star Slots . . . . .	9
2.4.1	Slot 3 . . . . .	9
2.4.2	Slot 4 . . . . .	10
2.4.3	Slot 5 . . . . .	11
2.4.4	Slot 6 . . . . .	12
2.4.5	Slot 7 . . . . .	13
2.5	FID Slots . . . . .	14
2.5.1	Slot 0 . . . . .	14
2.5.2	Slot 1 . . . . .	15
2.5.3	Slot 2 . . . . .	16
<b>A</b>	<b>Summary</b>	<b>17</b>
A.1	Status . . . . .	17
A.2	Comments . . . . .	17

# 1 Front

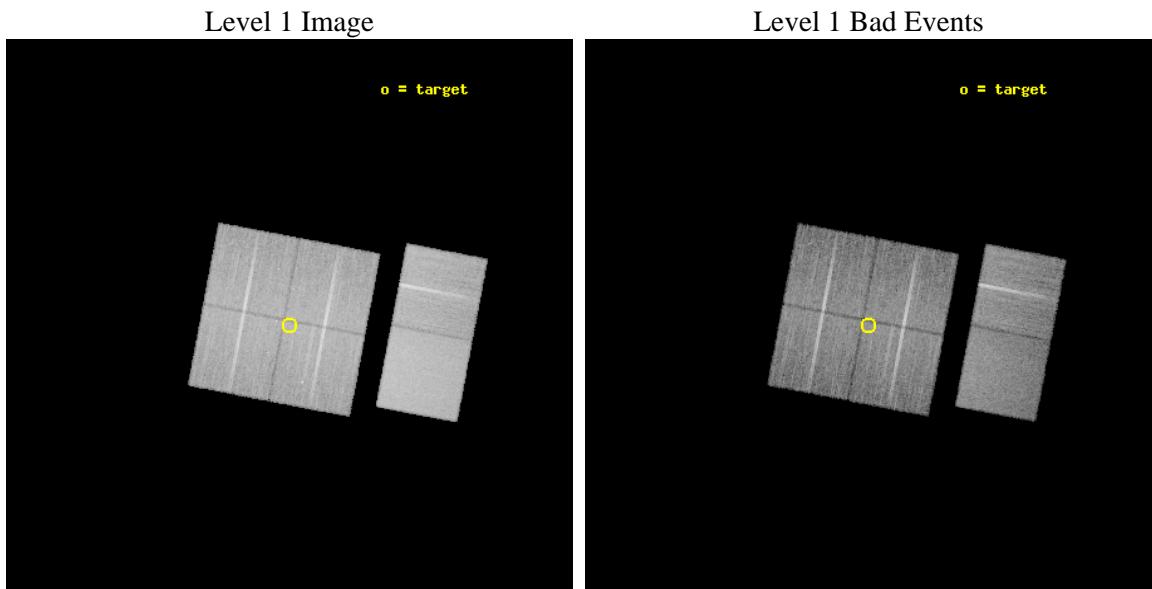
seq_num	200318	Sequence number
obs_id	5383	Observation id
title	X-ray Imaging of McNeil's Star: Witnessing the Onset of an Accretion Burst	Proposal title
observer	Dr. Joel Kastner	Principal investigator
object	IRAS05436-0007	Source name
dtcycle	0	&#160
cycle	P	events from which exps? Prim/Second/Both
ra_targ	86.554583	Observer's specified target RA [deg]
dec_targ	-0.101389	Observer's specified target Dec [deg]
ra_nom	86.555538621439	Nominal RA [deg]
dec_nom	-0.096833142331438	Nominal Dec [deg]
roll_nom	100.80551797978	Nominal Roll [deg]
revision	3	Processing version of data
ontime	20134.399924994	Sum of GTIs [s]
livetime	19879.446029663	Livetime [s]
ontime0	20131.158934772	Sum of GTIs [s]
ontime1	20131.15895471	Sum of GTIs [s]
ontime2	20134.399924994	Sum of GTIs [s]
ontime3	20134.399924994	Sum of GTIs [s]
ontime6	20134.399924994	Sum of GTIs [s]
ontime7	20134.399924994	Sum of GTIs [s]
l2events	160210	Number of level 2 events



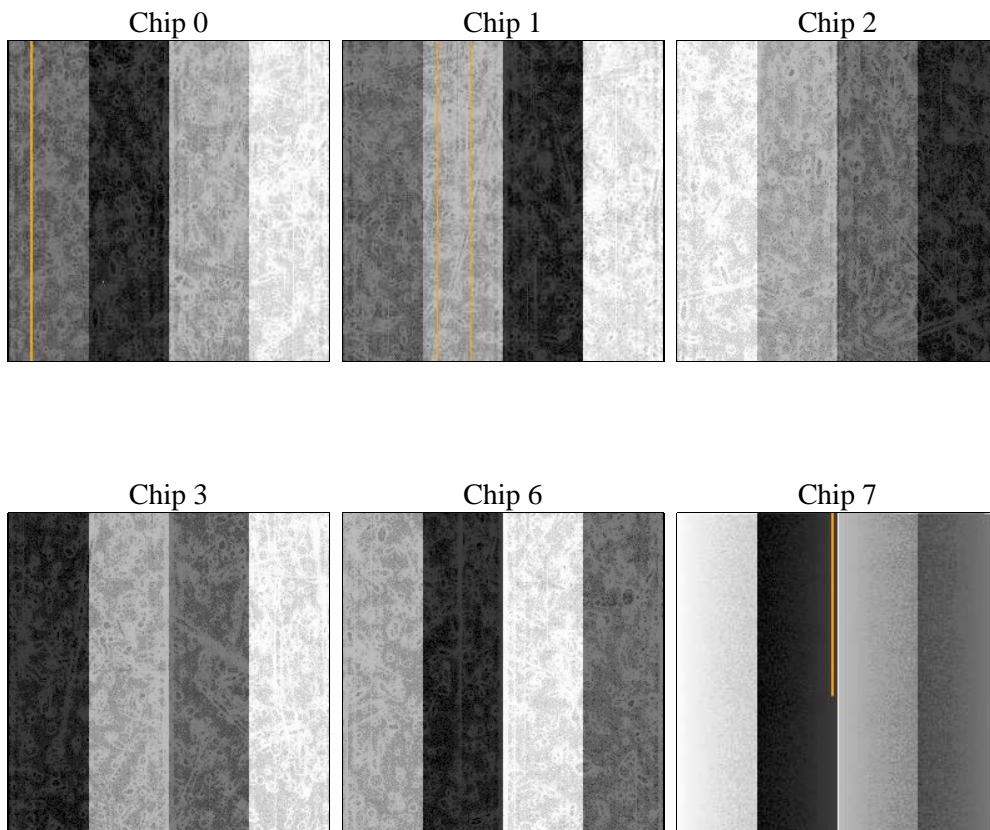
## 2 OBI

### 2.1 OBI

#### 2.1.1 Images



#### 2.1.2 Bias



### 2.1.3 Parameters

obi_num	3	Obi number	sched_exp_time	20000.000000	[s] Scheduled observation exposure time
ascdsver	8.5.1.1	Processing system revision	ontime	20134.399924994	Sum of GTIs [s]
caldbver	4.5.5	&#160	ontime0	20131.158934772	Sum of GTIs [s]
date	2012-12-28T00:51:43	Date and time of file creation	ontime1	20131.15895471	Sum of GTIs [s]
revision	3	Processing version of data	ontime2	20134.399924994	Sum of GTIs [s]
			ontime3	20134.399924994	Sum of GTIs [s]
			ontime6	20134.399924994	Sum of GTIs [s]
			ontime7	20134.399924994	Sum of GTIs [s]
			l1events	938764	Number of level 1 events

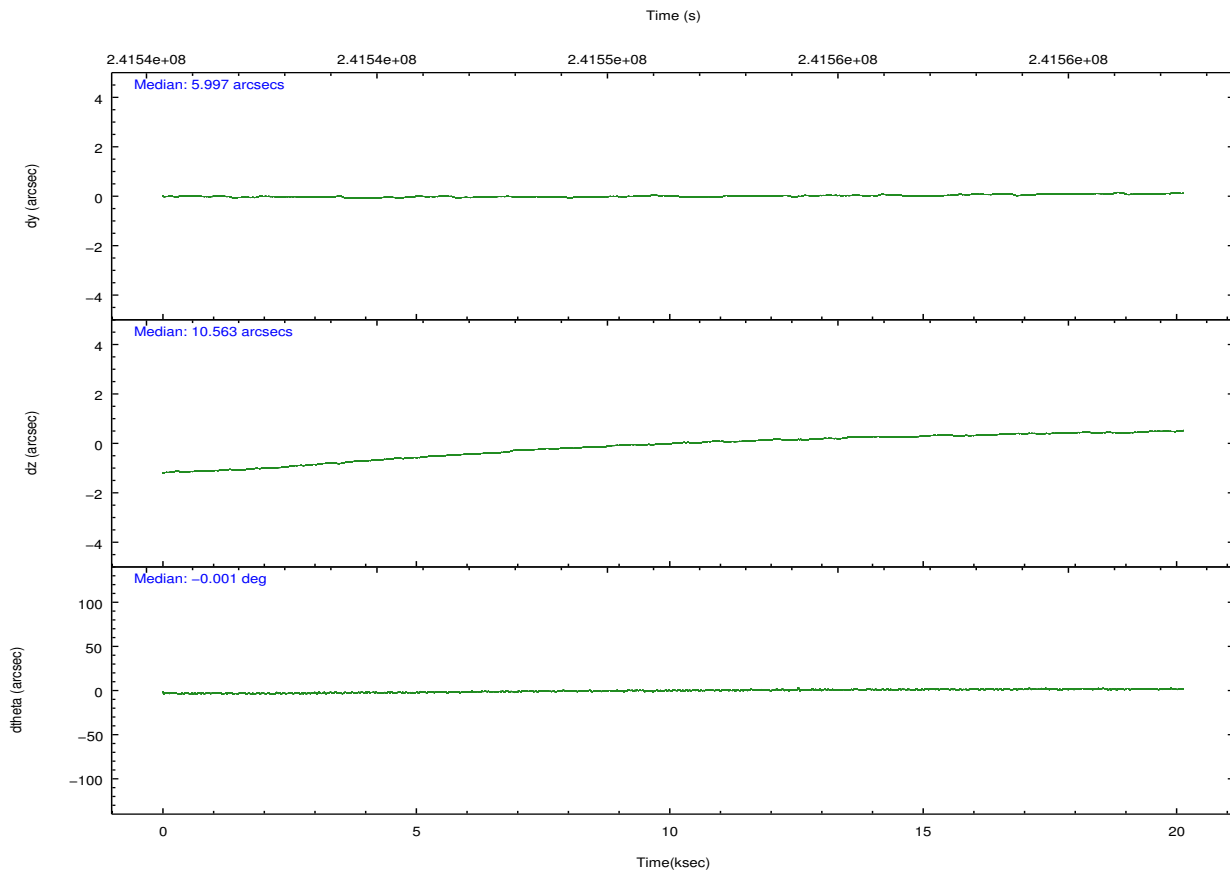
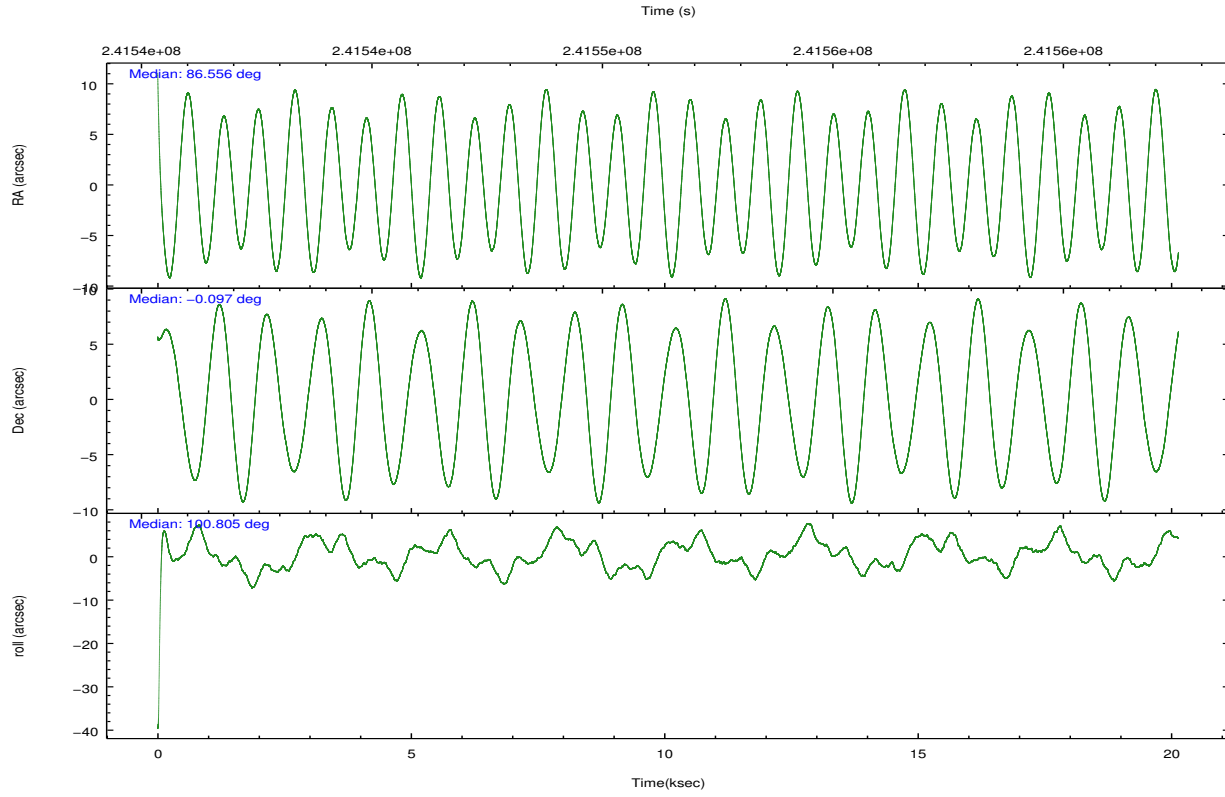
### 2.1.4 Events

	ccd 0	ccd 1	ccd 2	ccd 3	ccd 6	ccd 7		ccd 0	ccd 1	ccd 2	ccd 3	ccd 6	ccd 7
level 1 events	139722	141931	146204	145202	159689	206016	grade 0 events	7799	7522	8171	8194	7028	6970
rejected events	121561	122406	128233	126692	141412	123473		5%	5%	5%	5%	4%	3%
rejected %	87%	86%	87%	87%	88%	59%	grade 1 events	89	81	97	106	76	205
								0%	0%	0%	0%	0%	0%
							grade 2 events	4115	4558	3730	3719	4122	16668
								2%	3%	2%	2%	2%	8%
							grade 3 events	1668	1886	1683	1766	1748	7111
								1%	1%	1%	1%	1%	3%
							grade 4 events	1617	1879	1631	1743	1706	7300
								1%	1%	1%	1%	1%	3%
							grade 5 events	6035	6233	5820	6581	7133	19293
								4%	4%	3%	4%	4%	9%
							grade 6 events	3231	3944	2993	3324	3923	45617
								2%	2%	2%	2%	2%	22%
							grade 7 events	115168	115828	122079	119769	133953	102852
								82%	81%	83%	82%	83%	49%

## 2.2 Compared Parameters

Parameter	Planned	Actual	Parameter	Planned	Actual
Instrument	ACIS	ACIS	Obspar format version number	7	7
Detector	ACIS-012367	ACIS-012367	Obspar file type	PREDICTED	ACTUAL
Grating	NONE	NONE	Obspar update status	NONE	UPDATED
Data mode	FAINT	FAINT	Number of optional ACIS chips dropped	0	0
Observation mode	POINTING	POINTING	On-chip summing requested	N	N
[deg] Pointing RA	86.573533	86.55553862143933	Subarray requested	NONE	NONE
[deg] Pointing Dec	-0.117508	-0.09683314233143754	Alternating exposures requested	N	N
[deg] Pointing Roll	100.596906	100.8055179797828	[s] Primary exposure time	0.000000	3.2
[mm] SIM focus pos	-0.782348	-0.7809083437167272			
[mm] SIM defocus	0	0.001439871863259334			
[mm] SIM translation stage pos	-233.592463	-233.5874344608287			
[mm] SIM translation stage offset	0	-0.005018542100998502			
[s] Observation start time (MET)	241541496.184000	241540308.79993			
Observation start date	2005-08-27T14:50:32	2005-08-27T14:31:48			
[s] Observation end time (MET)	241561496.184000	241562121.31343			
Observation end date	2005-08-27T20:23:52	2005-08-27T20:35:21			
Read mode	TIMED	TIMED			

## 2.3 Aspect

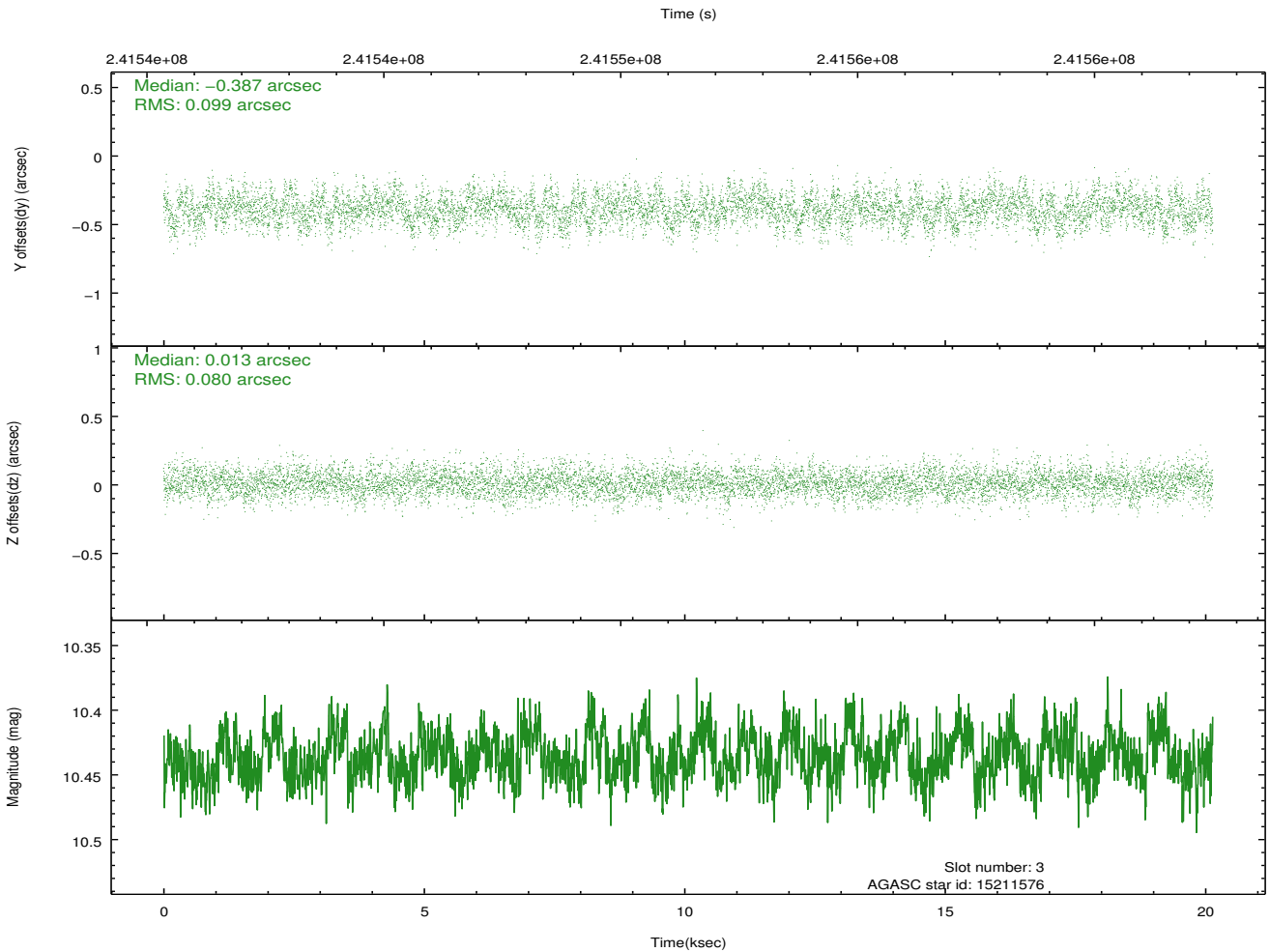
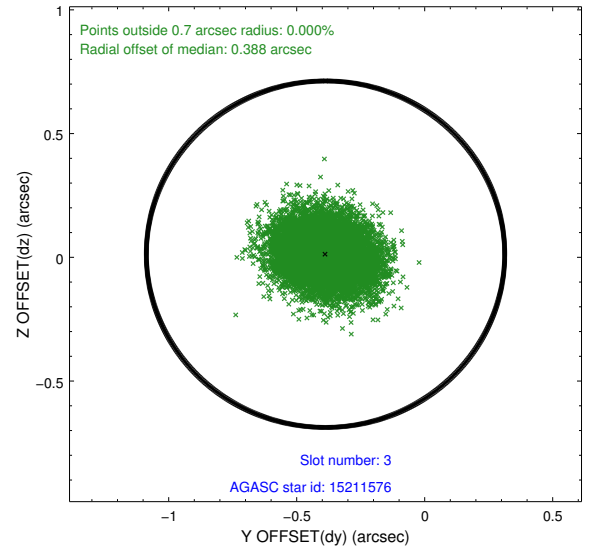
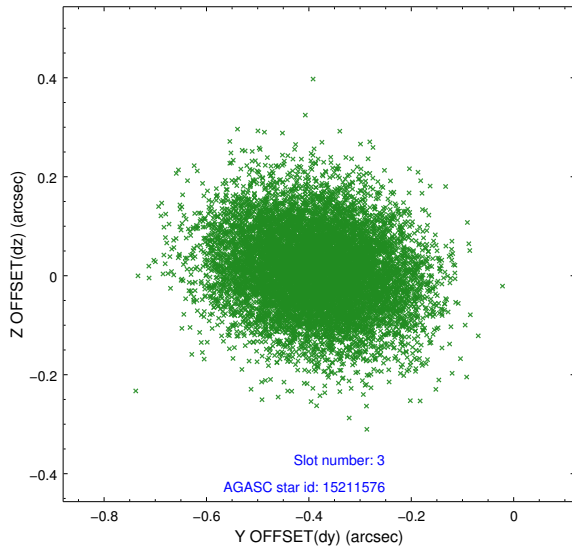


### Slot Statistics

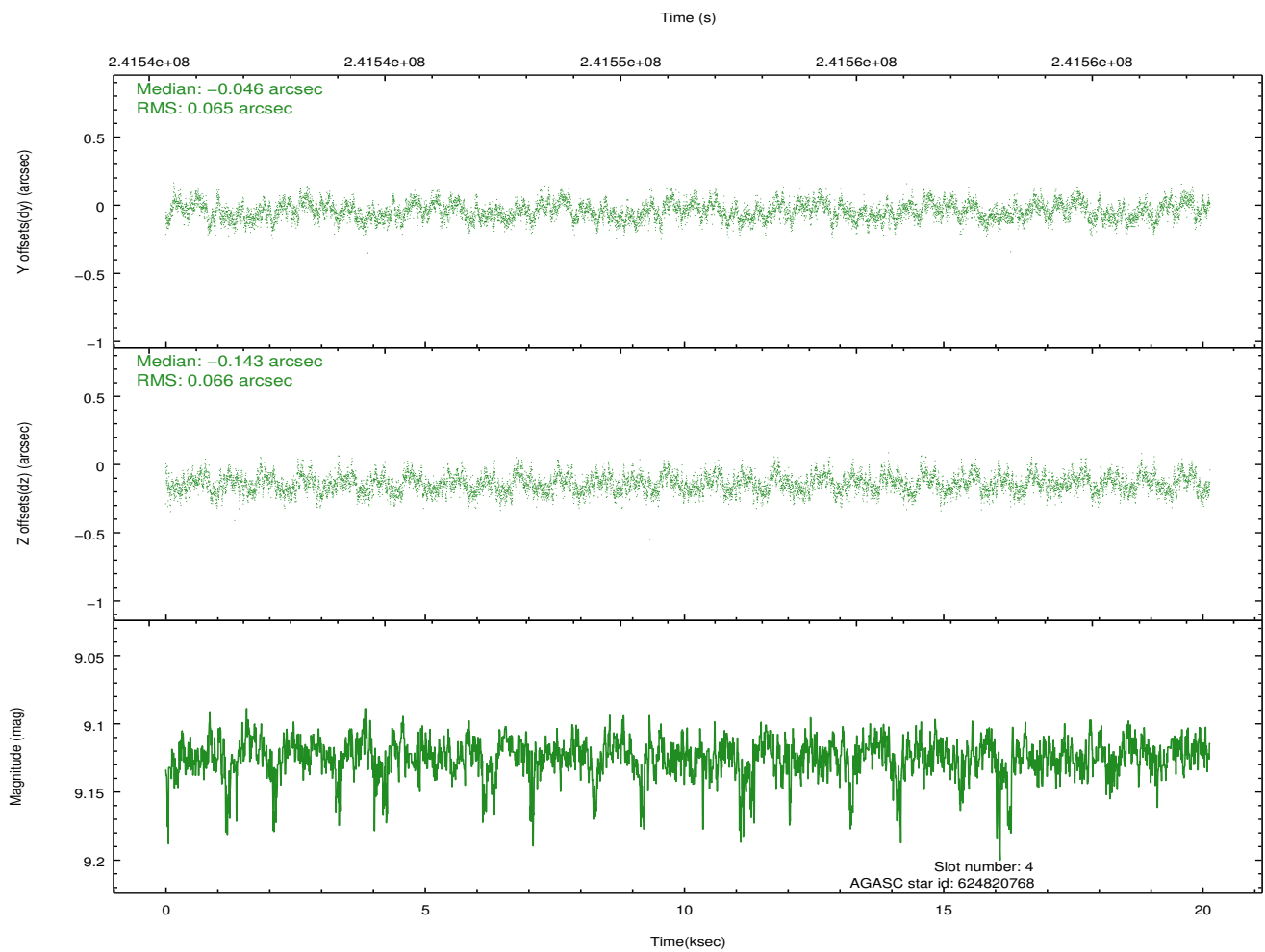
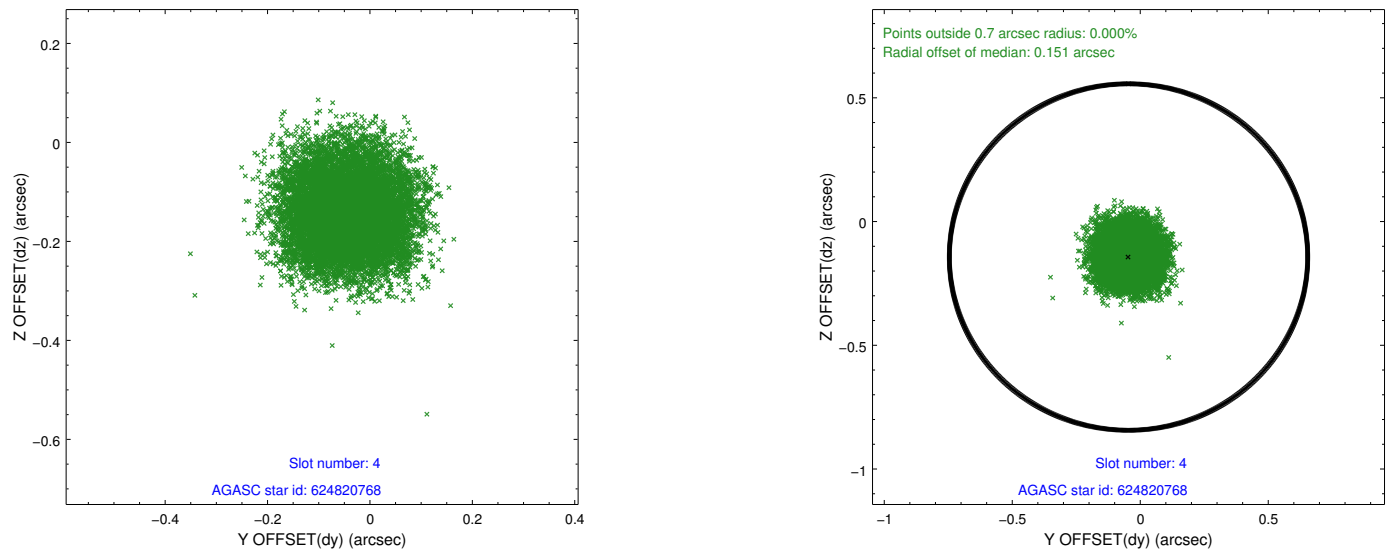
slot	status	id	mag	n_pts	med_dy	med_dz	dr1	dr2	ra	dec	mean_y	mean_z
0	FID	ACIS-I-1	7.24	4912	0.024	-0.010	0.023	0.048	0.000000	0.000000	933.71	-833.91
1	FID	ACIS-I-5	7.23	4913	-0.163	0.040	0.012	0.018	0.000000	0.000000	-1814.46	1063.56
2	FID	ACIS-I-6	7.26	4913	0.048	0.037	0.015	0.032	0.000000	0.000000	399.11	1708.24
3	GUIDE	15211576	10.44	9821	-0.387	0.013	0.137	0.219	86.250116	0.372772	1948.69	820.09
4	GUIDE	624820768	9.12	9820	-0.046	-0.143	0.101	0.156	86.202480	-0.061953	442.44	1276.36
5	GUIDE	624954088	9.59	9752	0.160	-0.136	0.100	0.163	86.606399	-0.671650	-1982.37	250.76
6	GUIDE	624954400	9.16	9821	0.202	0.096	0.074	0.120	86.607838	-0.762568	-2305.27	305.99
7	GUIDE	624955288	9.59	9817	0.073	0.166	0.089	0.143	87.070368	-0.669957	-2283.98	-1391.93

## 2.4 Star Slots

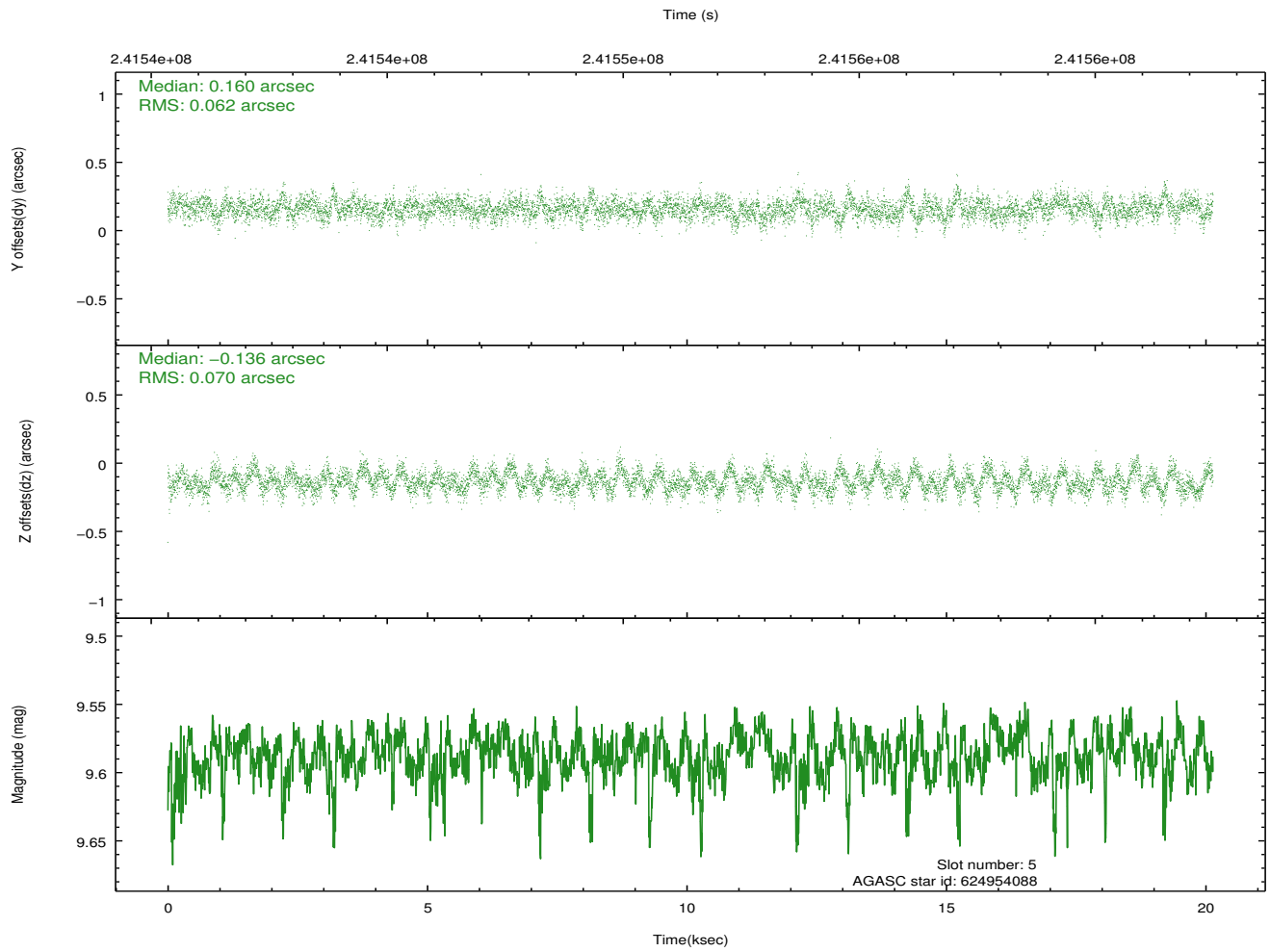
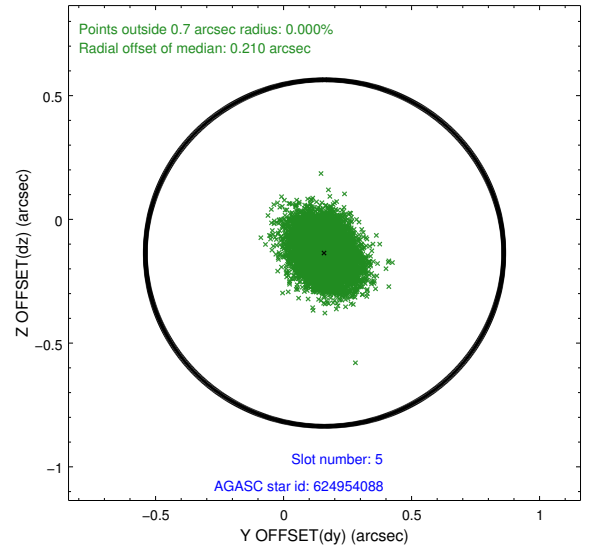
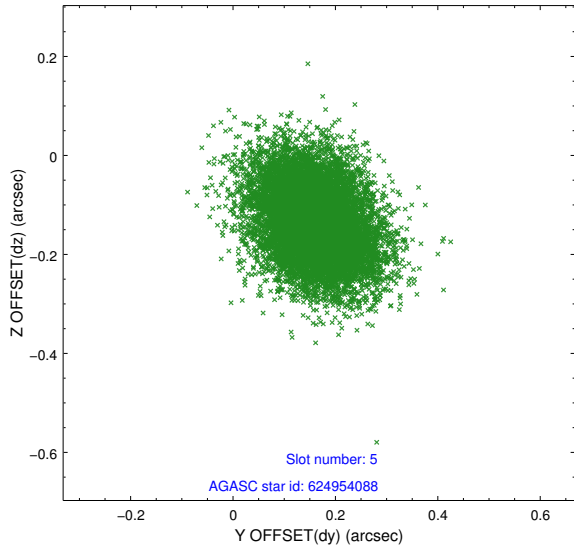
### 2.4.1 Slot 3



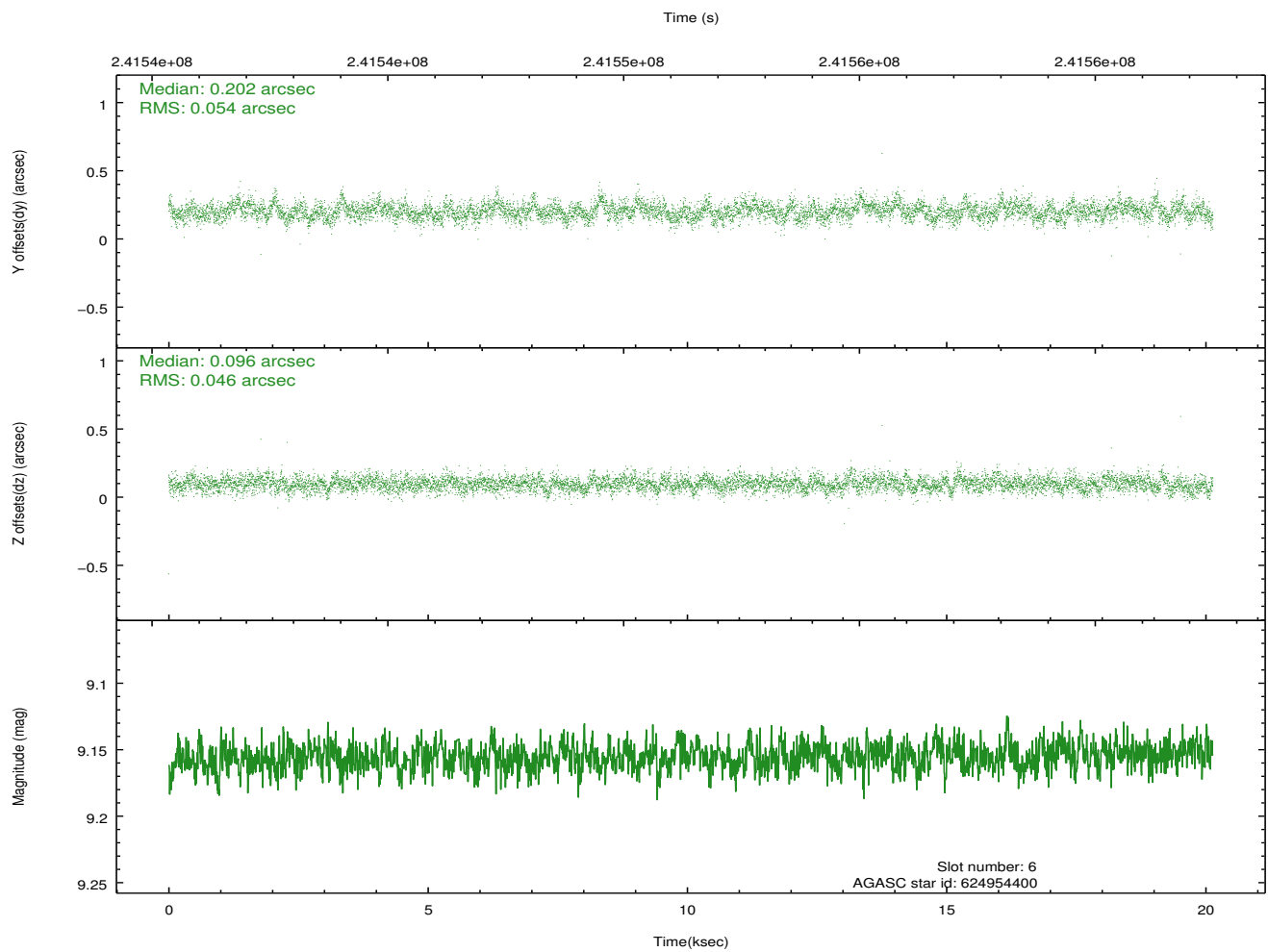
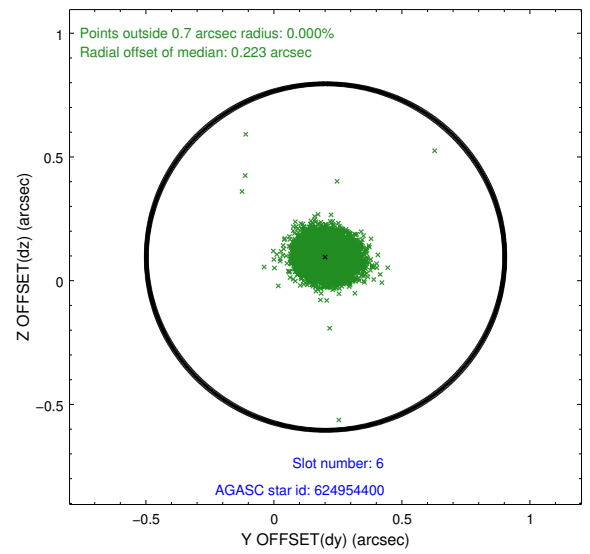
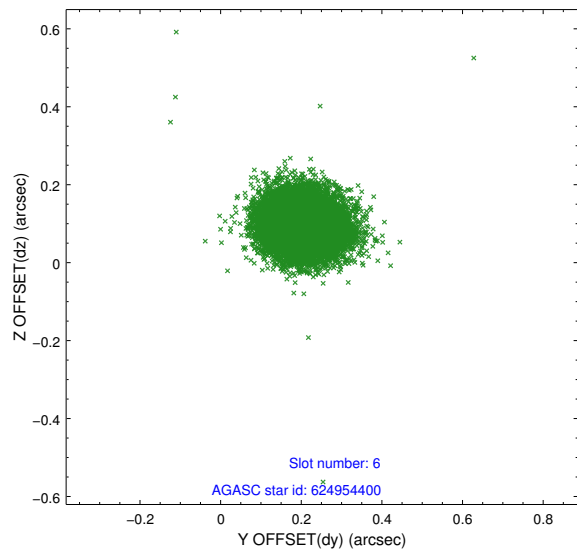
## 2.4.2 Slot 4



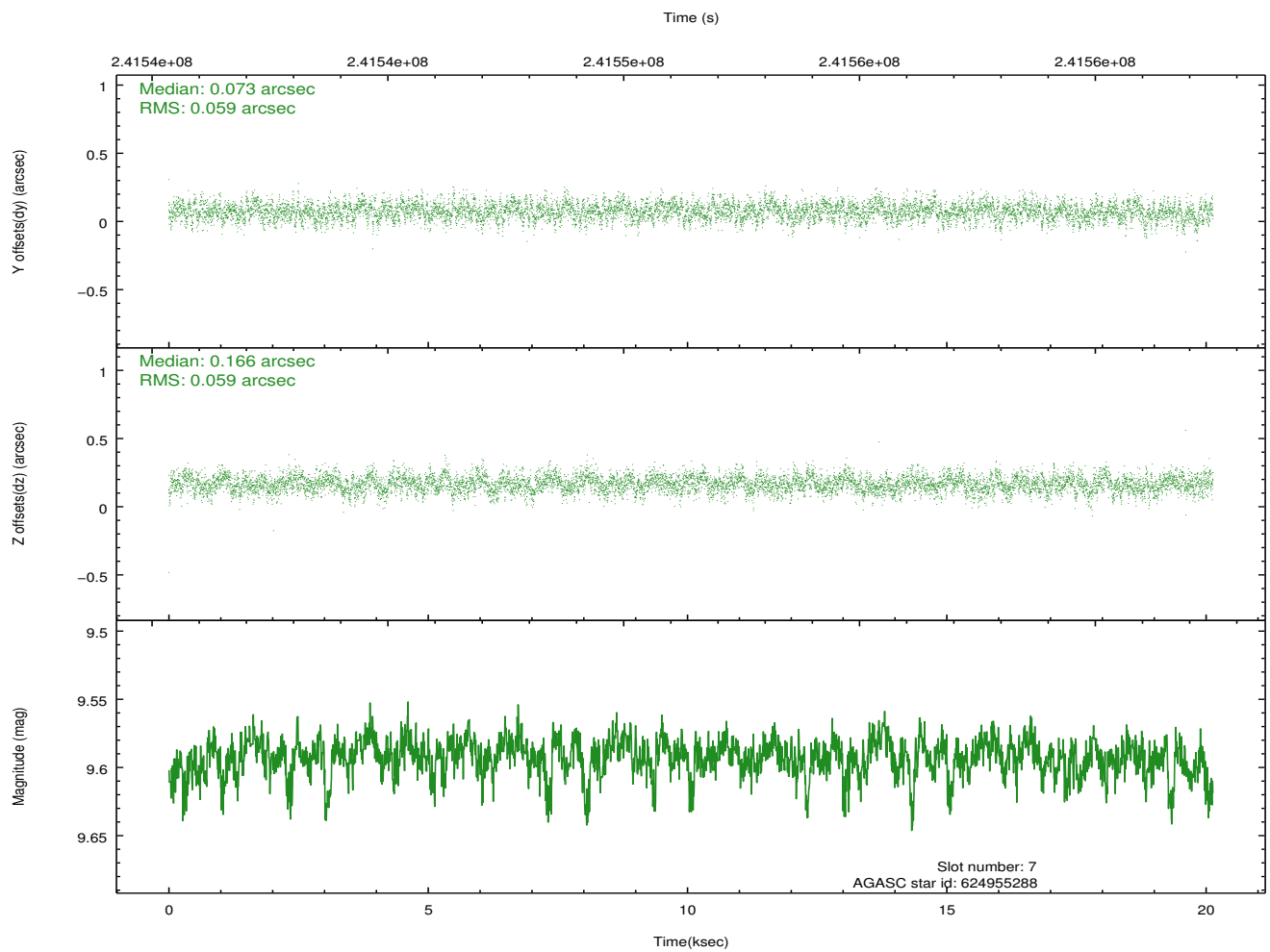
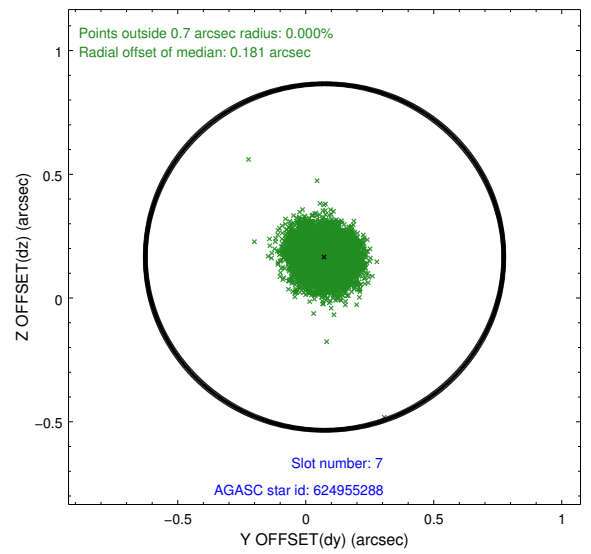
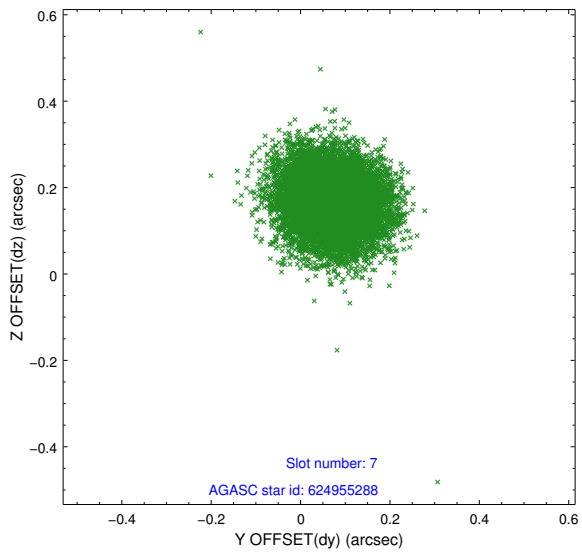
### 2.4.3 Slot 5



## 2.4.4 Slot 6

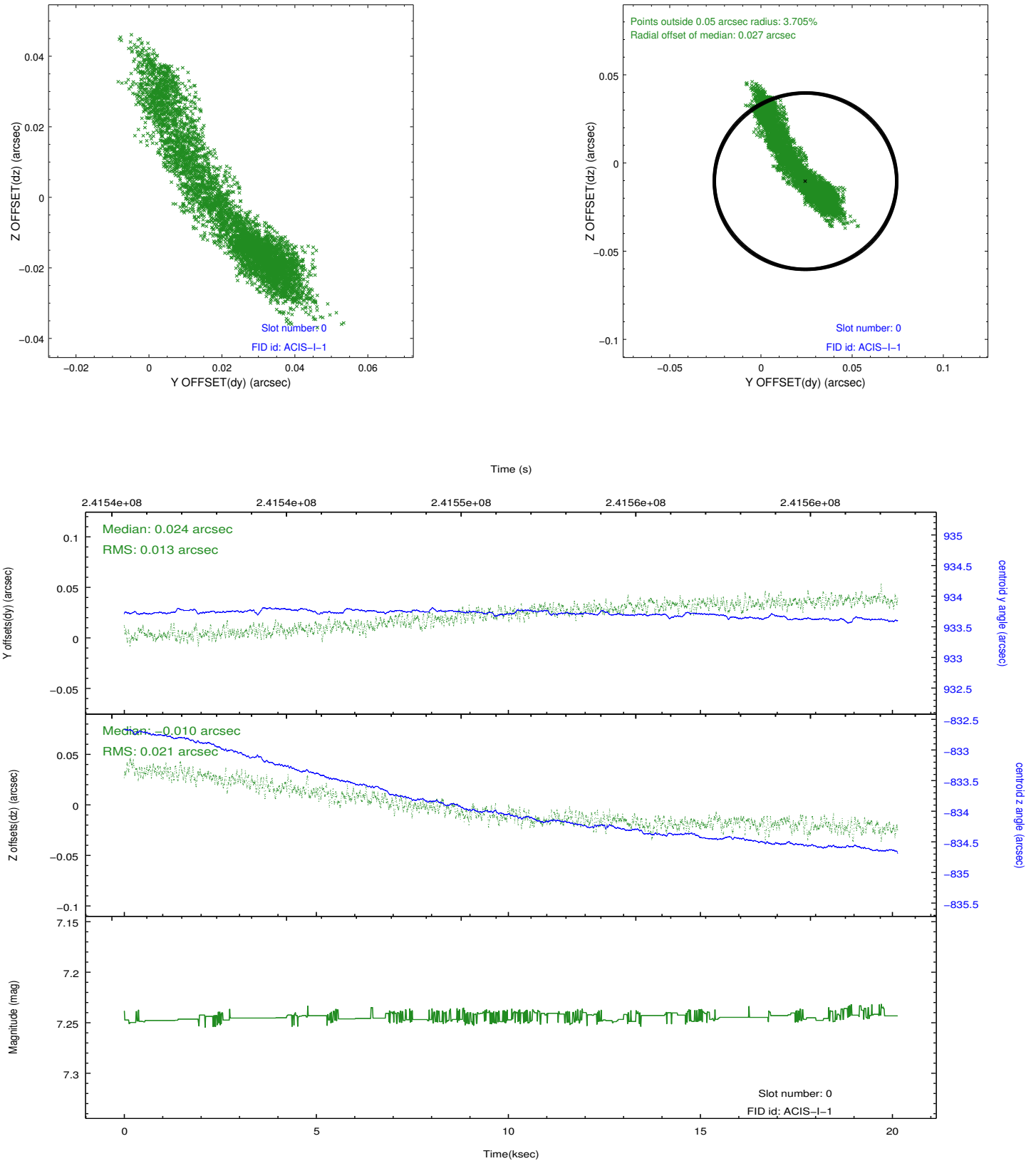


### 2.4.5 Slot 7

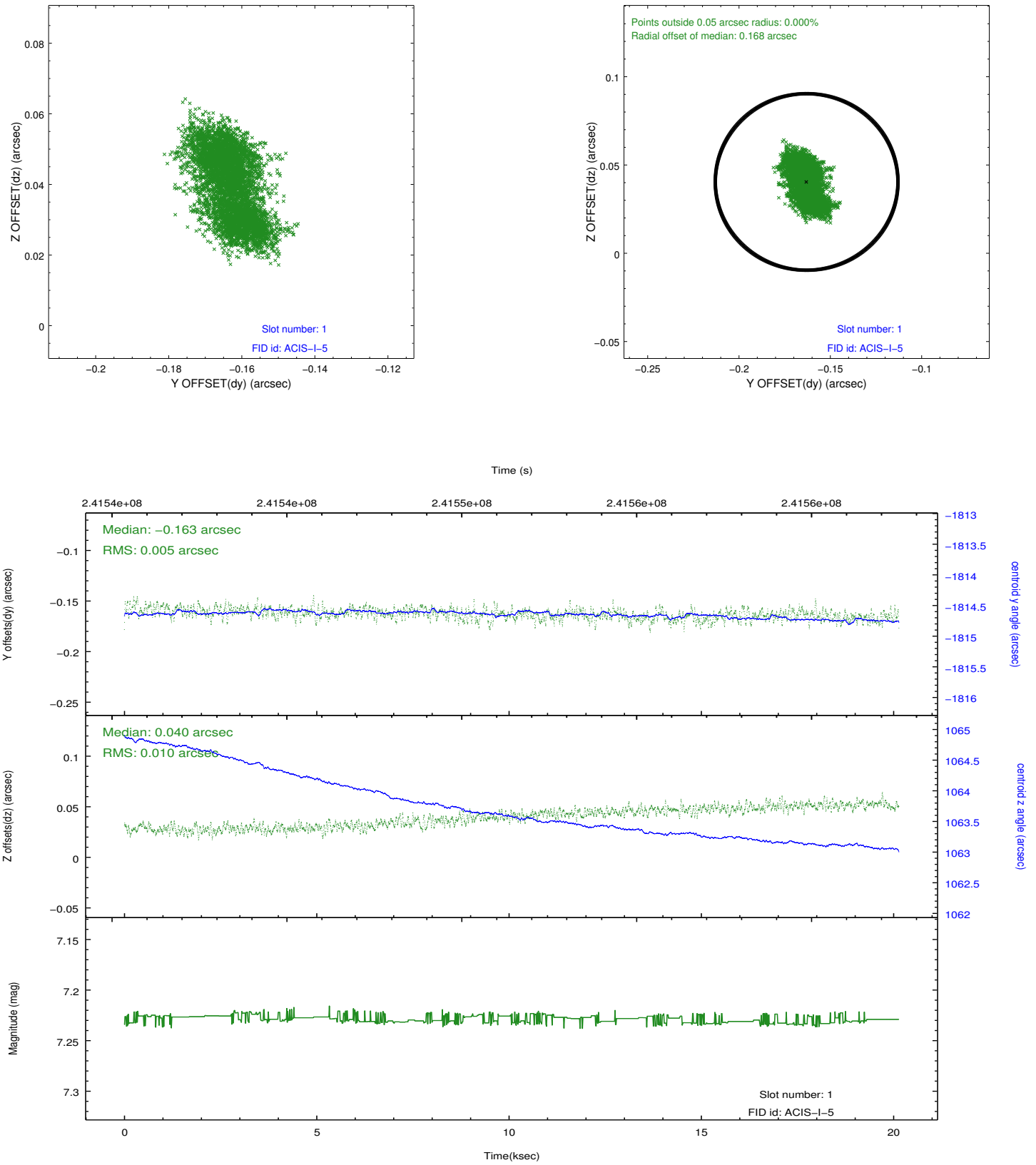


## 2.5 FID Slots

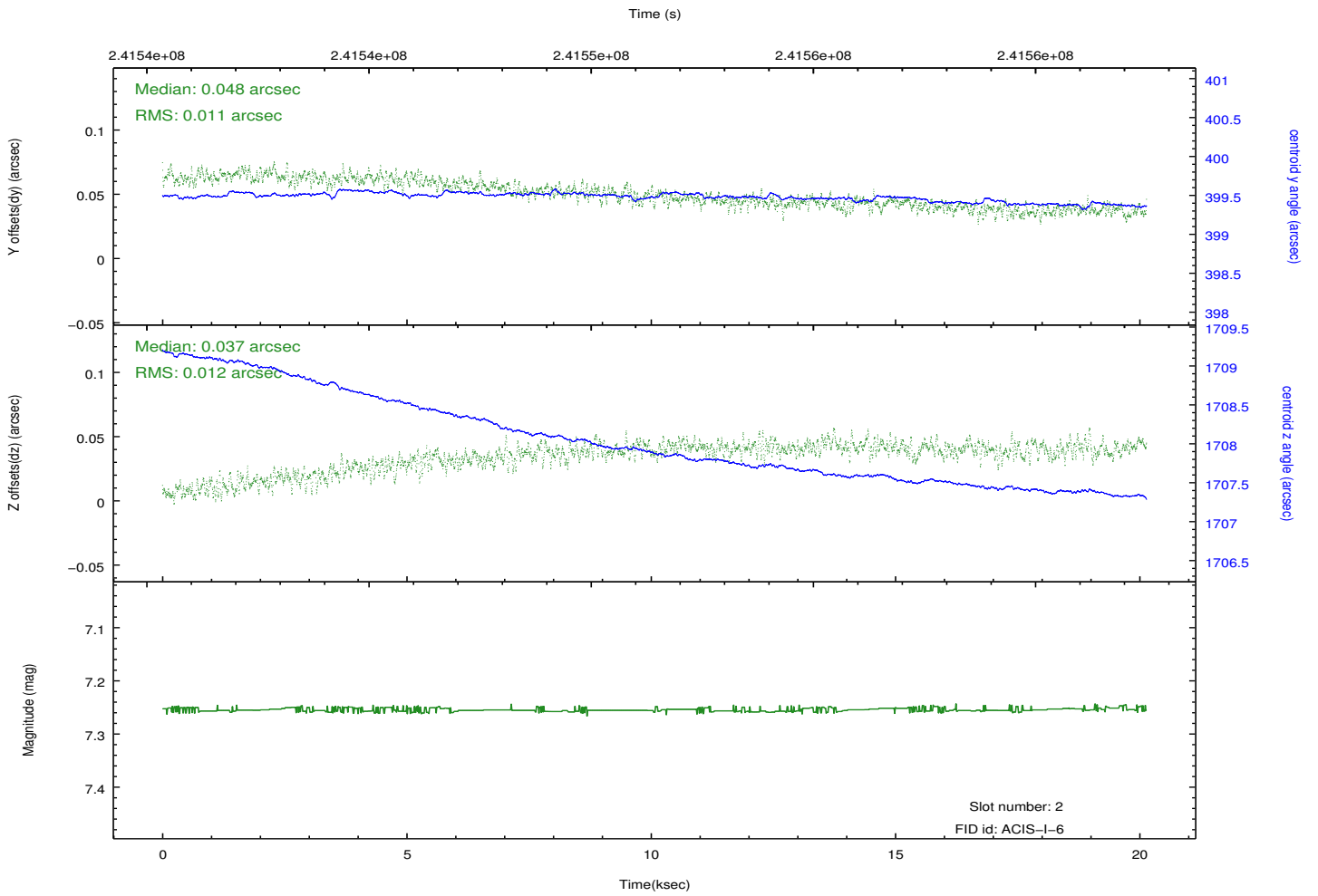
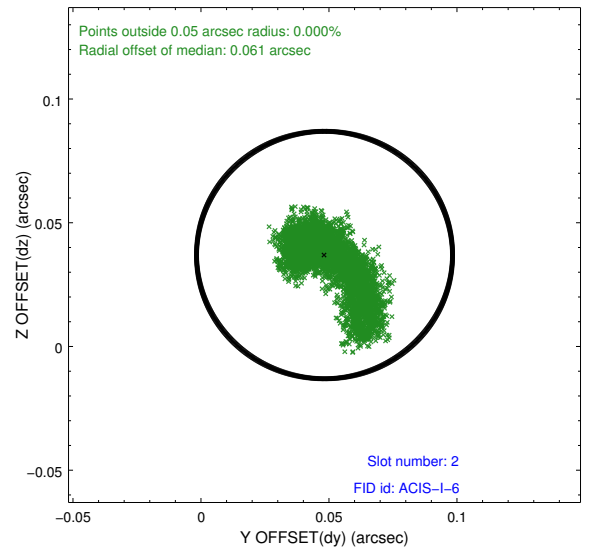
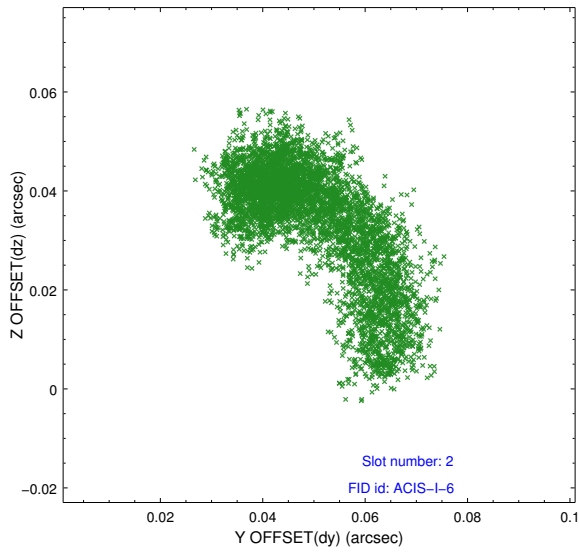
### 2.5.1 Slot 0



## 2.5.2 Slot 1



### 2.5.3 Slot 2



# A Summary

## A.1 Status

V&V Scientist	Jen Lauer
V&V Date (YYYY-MM-DD)	2013.01.24
V&V Edition	1
V&V Disposition and Status	OK
V&V Charge Time	20.13439

## A.2 Comments

Window constraint met.